



**India Meteorological Department  
(Ministry of Earth Sciences)**

**NATIONAL BULLETIN NO. 01 (AS/01/2025)**

**TIME OF ISSUE: 0915 HOURS IST**

**DATED: 24.05.2025**

**FROM: INDIA METEOROLOGICAL DEPARTMENT**

**(FAX NO. 24643965/24699216/24623220)**

**TO: CONTROL ROOM, NDM, MINISTRY OF HOME AFFAIRS (FAX.NO. 23093750)  
CONTROL ROOM NDMA (FAX.NO. 26701729)  
CABINET SECRETARIAT (FAX.NO.23012284, 23018638)  
PS TO HON'BLE MINISTER FOR S & T AND EARTH SCIENCES (FAX NO.23316745)  
SECRETARY, MOES (FAX NO. 24629777)  
H.Q. (INTEGRATED DEFENCE STAFF AND CDS) (FAX NO. 23005137/23005147)  
DIRECTOR GENERAL, DOORDARSHAN (23385843)  
DIRECTOR GENERAL, AIR (23421105, 23421219)  
PIB MOES (FAX NO. 23389042)  
UNI (FAX NO. 23355841)  
D.G. NATIONAL DISASTER RESPONSE FORCE (NDRF) (FAX NO. 26105912, 2436 3260)  
DIRECTOR, PUNCTUALITY, INDIAN RAILWAYS (FAX NO. 23388503)  
CHIEF SECRETARY, LAKSHADWEEP (FAX NO. 048-96268124)  
CHIEF SECRETARY, DAMAN & DIU (FAX NO. 0260-2230775)  
CHIEF SECRETARY, MAHARASHTRA (FAX NO. 022- 22028594)  
CHIEF SECRETARY, GUJARAT (FAX NO. 079-23250305)  
CHIEF SECRETARY, DADRA & NAGAR HAVELI (FAX NO. 0260-2645466)  
CHIEF SECRETARY, GOA (FAX NO. 0832-2415201)  
CHIEF SECRETARY, KERALA (FAX NO. 0471-2327176)  
CHIEF SECRETARY, KARNATAKA (FAX NO. 0802-2258913)**

**Sub: Depression over Eastcentral Arabian Sea and adjoining south Konkan coast**

The Well Marked Low pressure area over eastcentral Arabian Sea off south Konkan coast concentrated into a depression and lay centered at 0530 Hrs IST of today, the 24<sup>th</sup> May 2025 over eastcentral Arabian Sea and adjoining south Konkan coast near latitude 17.2° N & longitude 73.0° E, about 40 km northwest of Ratnagiri.

It is likely to move nearly eastwards and cross south Konkan coast between Ratnagiri and Dapoli as a depression during forenoon of today, the 24<sup>th</sup> May 2025.

**Warnings:**

**(i) Rainfall Warning:**

- ❖ Light to moderate rainfall at most places with heavy to very heavy rainfall at few places is likely over Konkan & Goa, Kerala & Mahe, Karnataka and Madhya Maharashtra during 24<sup>th</sup> - 28<sup>th</sup> May with Isolated extremely heavy rainfall over Konkan Goa during 24<sup>th</sup>- 25<sup>th</sup> May; Madhya Maharashtra on 25<sup>th</sup> May; coastal Karnataka during 24<sup>th</sup>-27<sup>th</sup> May; North Interior Karnataka on 25<sup>th</sup> May, South Interior Karnataka during 24<sup>th</sup>-27<sup>th</sup> May and Kerala & Mahe during 24<sup>th</sup>-26<sup>th</sup> May.

- ❖ Light to moderate rainfall at most places with isolated heavy rainfall is very likely over south Gujarat during 24<sup>th</sup> – 27<sup>th</sup> May.

**(ii) Wind Warning:**

**Squally wind** with speed reaching 45-55 kmph gusting to 65 kmph is likely to prevail over Eastcentral Arabian Sea & adjoining Northeast Arabian Sea and along and off Konkan-Goa & South Gujarat coasts during 24<sup>th</sup> – 25<sup>th</sup> May. Thereafter, the winds would gradually decrease becoming 40-50 kmph gusting to 60 kmph over the same region during 26<sup>th</sup>-27<sup>th</sup>.

Squally wind speed reaching 40-50 kmph gusting to 60 kmph very likely to prevail over Lakshadweep & Comorin area and along & off Kerala & Karnataka coasts during 24<sup>th</sup> – 27<sup>th</sup> May.

**(iii) Sea Condition:**

Sea condition is likely to be Rough to very rough over Eastcentral & adjoining northeast Arabian Sea, Lakshadweep & Comorin area and along & off Kerala, Karnataka, Goa, Maharashtra and south Gujarat coasts during 24<sup>th</sup> to 27<sup>th</sup> May.

**(iv) Warning:**

Fishermen are advised not to venture into

- (A) Eastcentral & adjoining northeast Arabian Sea and along & off Konkan, Goa, south Gujarat, Daman & Diu, Dadar & Nagar Haveli coasts and into Lakshadweep & Comorin Area and along & off Kerala & Karnataka coasts till 27<sup>th</sup> May 2025.
- (B) Small ships/shipping activities are to be monitored and regulated during 24<sup>th</sup> to 27<sup>th</sup> May 2025.
- (C) Judicious regulation of tourism and recreational activities during 24<sup>th</sup> to 27<sup>th</sup> May 2025.

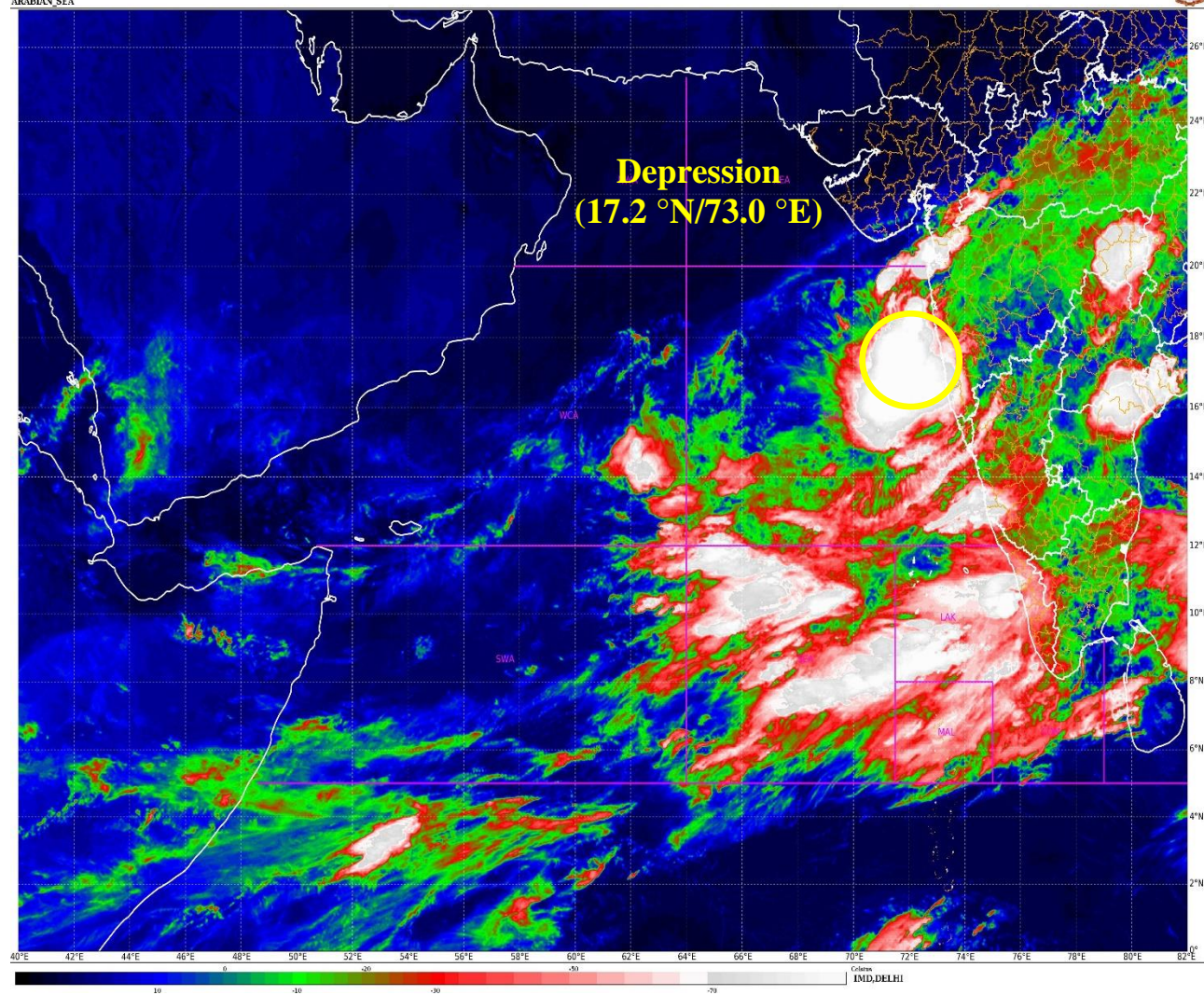
**Next bulletin will be issued at 1130 hours IST of today, the 24<sup>th</sup> May, 2025.**

**Dr D R Pattanaik,  
Scientist, RSMC & IMD, New Delhi**

*Copy to: ACWC Mumbai/ACWC Kolkata/ACWC Chennai/CWC Ahmedabad/CWC Bhubaneswar/CWC Vishakhapatnam/Meteorological Centre Port Blair/CWC Thiruvananthapuram/ MC Goa/MC Bengaluru*

SAT : INSAT-3DR IMG  
IMG\_TIR1\_TEMP 10.8 um  
ARABIAN SEA

24-05-2023(0115 to 0142) GMT  
24-05-2023(0645 to 0712) IST





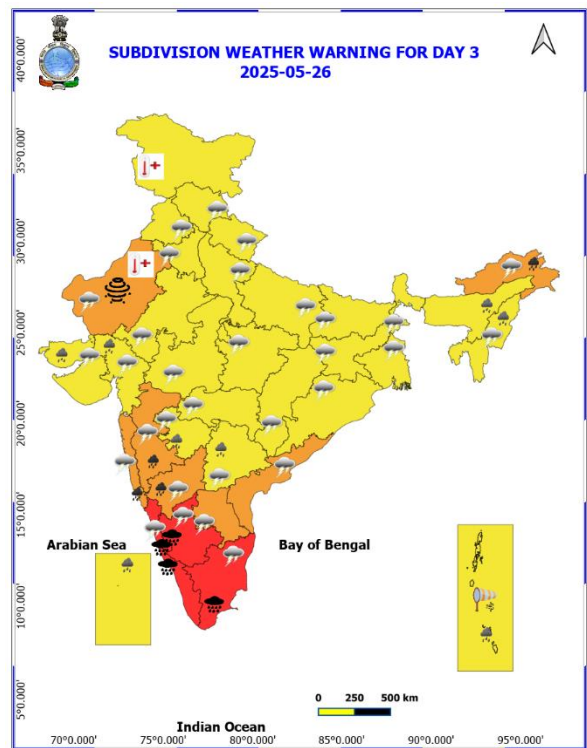
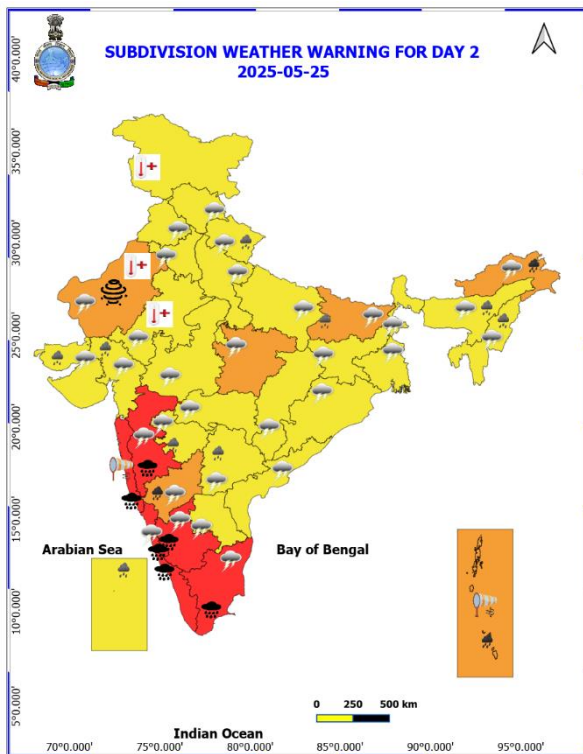
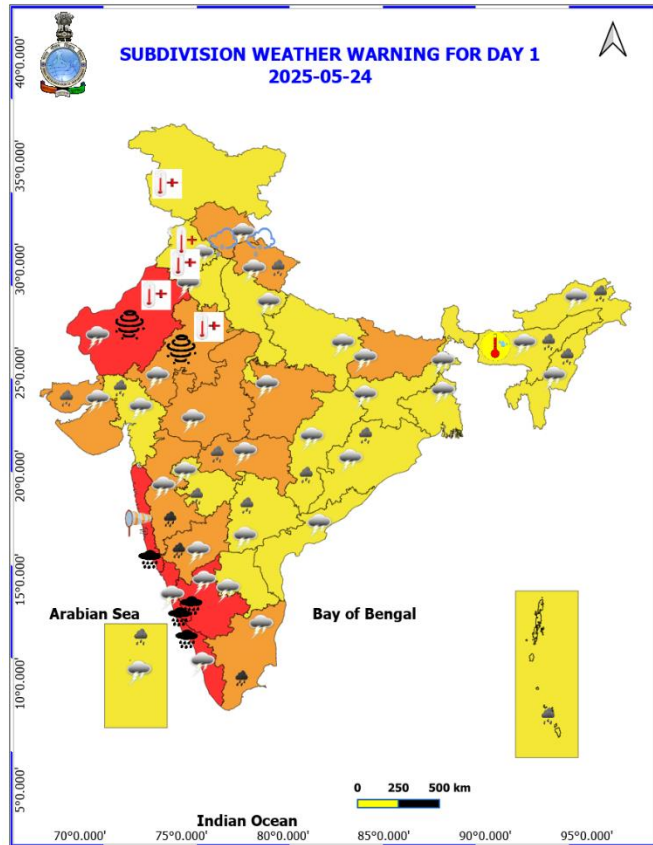


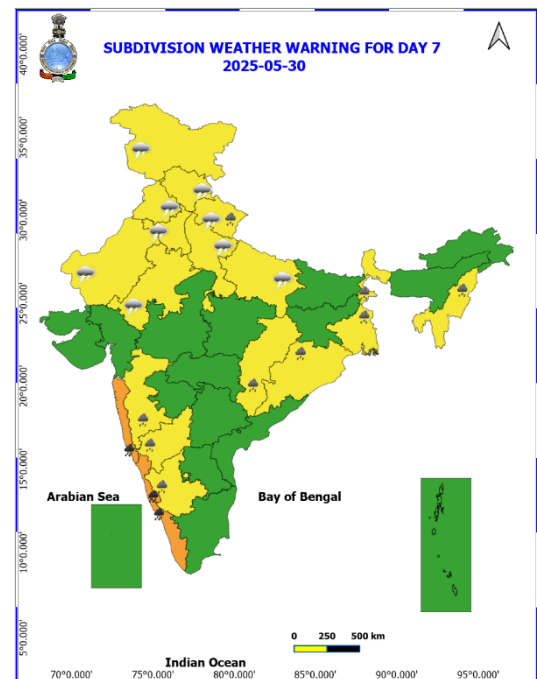
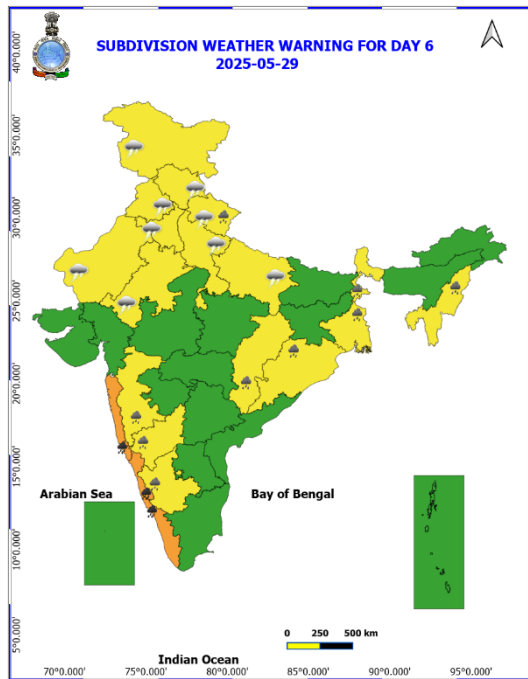
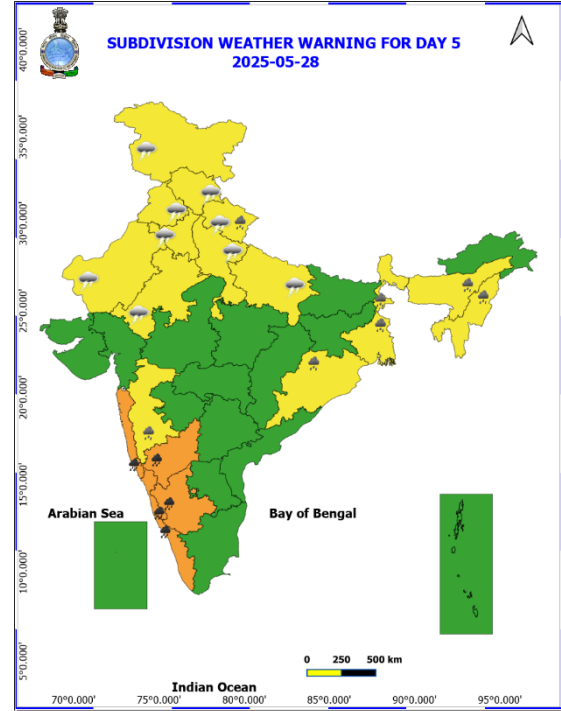
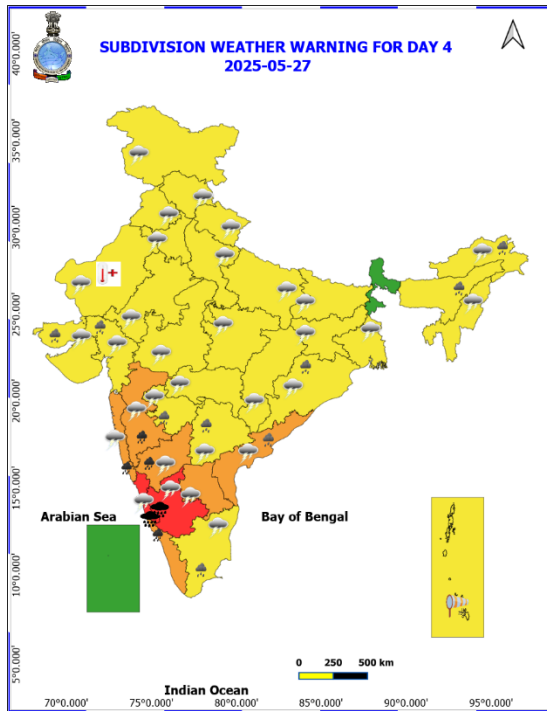
**OBSERVED AND FORECAST TRACK OF DEPRESSION OVER EASTCENTRAL ARABIAN SEA AND ADJOINING SOUTH KONKAN COAST BASED ON 0000 UTC OF 24<sup>th</sup> MAY, 2025**



DATE/TIME IN UTC  
IST=UTC + 0530  
L: LOW PRESSURE AREA  
WML: WELL MARKED LOW PRESSURE AREA  
D: DEPRESSION (17-27 KT)  
DD: DEEP DEPRESSION (28-33 KT)  
CS: CYCLONIC STORM (34-47 KT)  
SCS: SEVERE CYCLONIC STORM (48-63KT)  
VSCS: VERY SEVERE CYCLONIC STORM (64-89 KT)  
ESCS: EXTREMELY SEVERE CYCLONIC STORM (90-119 KT)  
SuCS: SUPER CYCLONIC STORM ( $\geq 120$  KT)

● LESS THAN 34 KT  
⌀ 34-47 KT  
⌀  $\geq 48$  KT  
■ OBSERVED TRACK  
■ FORECAST TRACK  
▲ CONE OF UNCERTAINTY



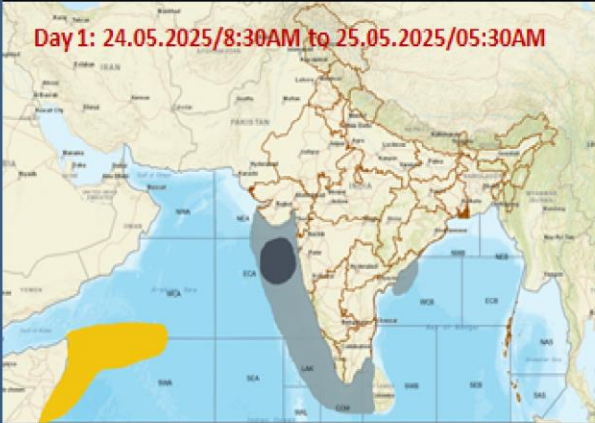


- Action may be taken based on **ORANGE AND RED** COLOUR warnings.
- Vulnerable regions likely urban and hilly areas action may be initiated for heavy rainfall warning.
- As the lead period increases forecast accuracy decreases.



## Fishermen Warning Graphics

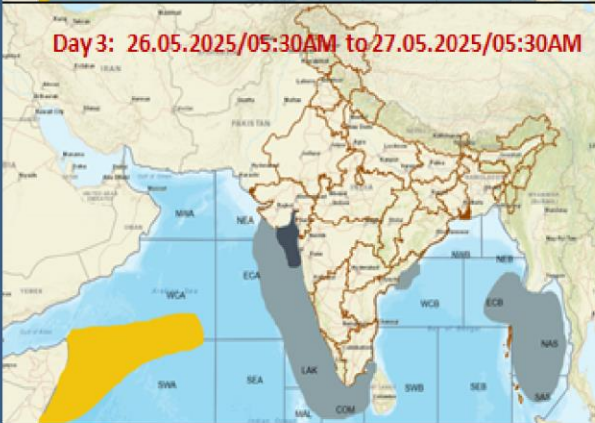
**Day 1: 24.05.2025/8:30AM to 25.05.2025/05:30AM**



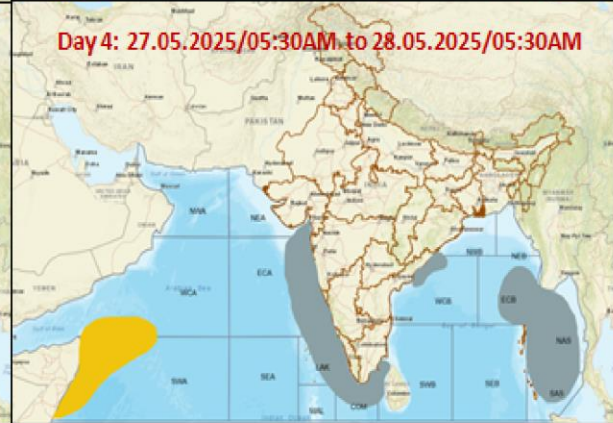
**Day 2: 25.05.2025/05:30AM to 26.05.2025/05:30AM**



**Day 3: 26.05.2025/05:30AM to 27.05.2025/05:30AM**



**Day 4: 27.05.2025/05:30AM to 28.05.2025/05:30AM**



**Day 5: 28.05.2025/05:30AM to 29.05.2025/05:30AM**



Squally Weather with wind speed 35-50 kmph gusting to 60 kmph

Squally weather with wind speed 45-55 kmph gusting to 65 kmph

Squally wind with speed 45-50 kmph gusting to 55 kmph

**Fishermen are advised not to venture into the marked areas.**