



**India Meteorological Department  
Earth System Science Organisation  
(Ministry of Earth Sciences)**

**BULLETIN NO. : 10 (ARB/01/2020)**

**TIME OF ISSUE: 2015 HOURS IST**

**DATED: 31.05.2020**

**FROM: INDIA METEOROLOGICAL DEPARTMENT (FAX NO. 24643965/24699216/24623220)**

**TO: CONTROL ROOM, NDM, MINISTRY OF HOME AFFAIRS (FAX.NO. 23092398/23093750)**

**CONTROL ROOM NDMA (FAX.NO. 26701729)**

**CABINET SECRETARIAT (FAX.NO.23012284, 23018638)**

**PS TO HON'BLE MINISTER FOR S & T AND EARTH SCIENCES (FAX NO.23316745)**

**SECRETARY, MOES, (FAX NO. 24629777)**

**H.Q. (INTEGRATED DEFENCE STAFF AND CDS) (FAX NO. 23005137/23005147)**

**DIRECTOR GENERAL, DOORDARSHAN (23385843) DIRECTOR GENERAL, AIR (23421101, 23421105, 23421219)**

**PIB MOES (FAX NO. 23389042)**

**UNI (FAX NO. 23355841)**

**D.G. NATIONAL DISASTER RESPONSE FORCE (NDRF) (FAX NO. 26105912, 2436 3260)**

**DIRECTOR, PUNCTUALITY, INDIAN RAILWAYS (FAX NO. 23388503)**

**CHIEF SECRETARY, KERALA (FAX NO. 0471-2327176)**

**ADMINISTRATOR, LAKSHADWEEP ISLANDS (FAX NO. 0413-262184)**

**ADMINISTRATOR, UNION TERRITORY OF DAMAN & DIU (0260-2230775)**

**ADMINISTRATOR, UNION TERRITORY OF DADRA NAGAR HAVELI (0260-2230775)**

**CHIEF SECRETARY, KARNATAKA (FAX NO. 080-22258913)**

**CHIEF SECRETARY, GOA (FAX NO. 0832-2415201)**

**CHIEF SECRETARY, MAHARASHTRA (FAX NO. 022- 22028594)**

**CHIEF SECRETARY, GUJARAT (FAX NO. 079-23250305)**

**CHIEF SECRETARY, DAMAN & DIU (FAX NO. 0260-2230775)**

**CHIEF SECRETARY, DADRA & NAGAR HAVELI (FAX NO. 0260-2645466)**

**Sub: (1) Well Marked Low pressure area over Southeast and adjoining Eastcentral Arabian Sea & Lakshadweep area: Pre-Cyclone Watch for south Gujarat-north Maharashtra coasts**

**(2) Depression over south coastal Oman & adjoining Yemen**

(1) The low pressure area over Southeast and adjoining Eastcentral Arabian Sea & Lakshadweep area lay as **well marked low pressure area** over the same region at 1730 hours IST of today, the 31<sup>st</sup> May, 2020. It is very likely to concentrate into a Depression over Eastcentral and adjoining Southeast Arabian Sea during next 12 hours and **likely to intensify further into a Cyclonic Storm over Eastcentral Arabian Sea during the subsequent 24 hours**. It is very likely to move nearly northwards initially till 02<sup>nd</sup> June Morning and then recurve north-northeastwards and reach near north Maharashtra and south Gujarat coasts around 03<sup>rd</sup> June Morning.

(2) The **Depression** over south coastal Oman and adjoining Yemen moved westwards with a speed of 09 kmph during past 06 hours and lay centred at 1730 hrs IST of today, the 31<sup>st</sup> May, 2020 near latitude 17.0°N and longitude 53.0°E, about 110 km west of Salalah (Oman) and 120 km northeast of Al-Ghaydah (Yemen). It is very likely to maintain the intensity of Depression during next 12 hours and weaken gradually thereafter. It is very likely to move slowly west-southwestwards during next 24 hours.

**Warnings:**

**(i) Rainfall:**

Under the influence of the first system, light to moderate rainfall at most places with isolated heavy to very heavy falls very likely over Lakshadweep area, Kerala and coastal Karnataka till 1<sup>st</sup> June. Light to moderate rainfall at most places with isolated heavy falls very likely over south Konkan & Goa on 31<sup>st</sup> May and isolated heavy to very heavy falls on 01<sup>st</sup> June. Light to moderate rainfall at most places with isolated heavy to very heavy falls very likely over Konkan & Goa on 02<sup>nd</sup> June and over south Konkan & Goa on 03<sup>rd</sup> June.

Light to moderate rainfall at most places with heavy to very heavy falls at a few places and extremely heavy falls at isolated places over north Konkan and north Madhya Maharashtra on 03<sup>rd</sup> & 04<sup>th</sup> June.

**Spatial rainfall distribution: Isolated: <25%, A few: 26-50%, Many: 51-75%, Most: 76-100%**

**Rainfall amount (mm): Heavy rain: 64.5 – 115.5, Very heavy rain: 115.6 – 204.4, Extremely heavy rain: 204.5 or more.**

Light to moderate rainfall at most places with isolated heavy to very heavy falls very likely over south Gujarat state, Daman, Diu, Dadra & Nagar Haveli on 03<sup>rd</sup> June and with heavy to very heavy falls at a few places and extremely heavy falls at isolated places over south Gujarat state, Daman, Diu, Dadra & Nagar Haveli and on 04<sup>th</sup> June.

**(ii) Wind warning**

Squally wind, speed reaching 45-55 kmph gusting to 65 kmph, very likely to prevail over Southeast & adjoining Eastcentral Arabian Sea, Lakshadweep area and along & off Kerala coast during next 48 hours. It will gradually increase becoming Gale wind speed reaching 65-75 kmph gusting to 85 kmph over eastcentral Arabian Sea & along and off Karnataka- south Maharashtra coasts from 2<sup>nd</sup> June morning and further becoming 90-100 kmph gusting 110 kmph over eastcentral and northeast Arabian Sea along & off Maharashtra & Gujarat coasts from 3<sup>rd</sup> morning.

Squally wind, speed reaching 45-55 kmph gusting to 65 kmph, very likely to prevail over westcentral Arabian Sea along & off South Oman – Yemen coasts during next 24 hours.

**(iii) Sea condition**

The Sea condition is very likely to be rough to very rough over Southeast & adjoining Eastcentral Arabian Sea and Lakshadweep area during next 24 hours. It would become very rough to High over eastcentral & southeast Arabian Sea and along & off Karnataka- south Maharashtra coasts from 2<sup>nd</sup> June and High to very high over eastcentral and northeast Arabian Sea along & off Maharashtra & Gujarat coasts from 3<sup>rd</sup> June.

The sea condition is very likely to be rough to very rough over westcentral Arabian Sea along & off South Oman – Yemen coasts during next 24 hours.

**(iv) Fishermen Warning**

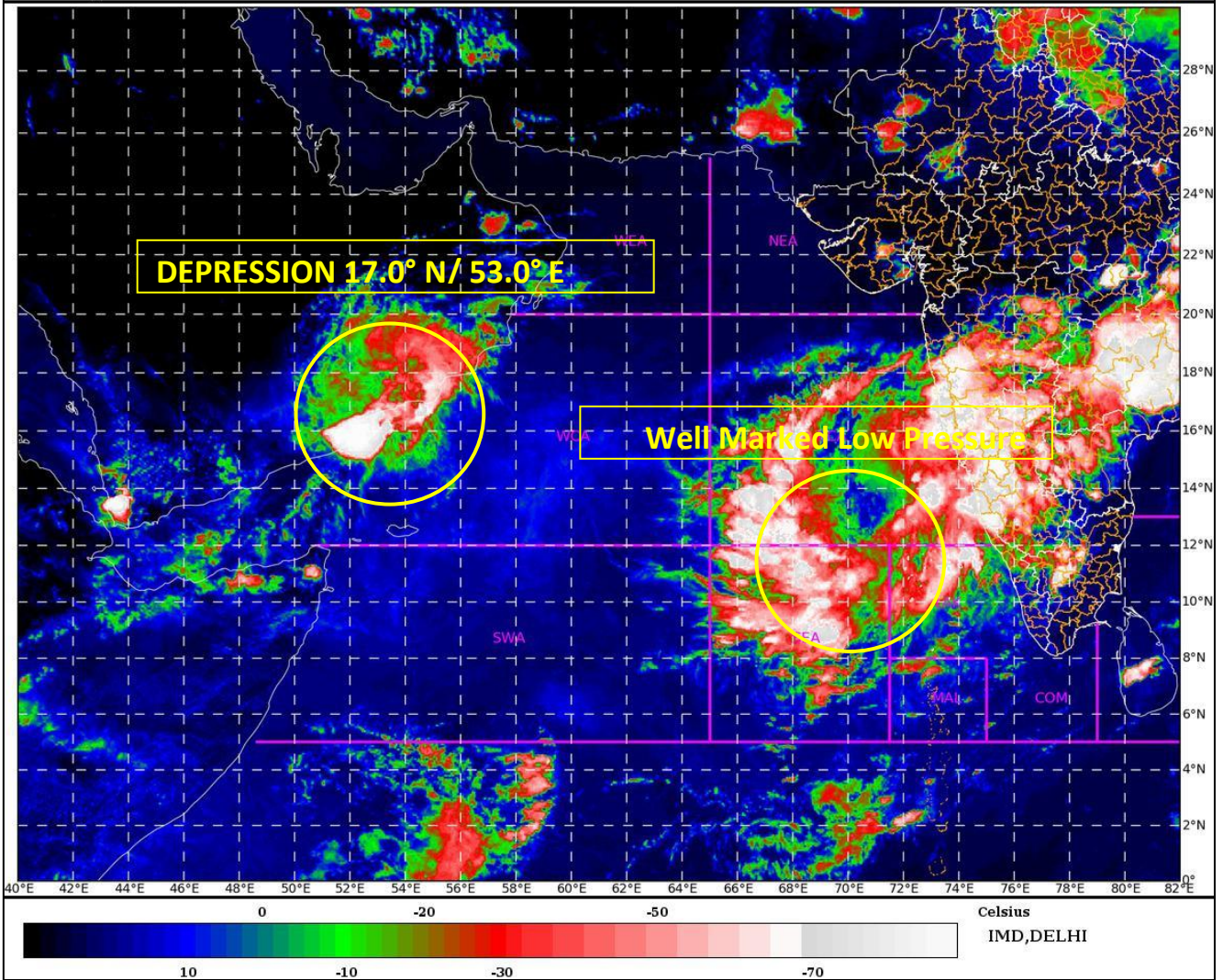
- Fishermen are advised not to venture into southeast Arabian Sea, Lakshadweep area and along & off Kerala coast till 2<sup>nd</sup> June; eastcentral Arabian Sea and along & off Karnataka coast till 3<sup>rd</sup> June ; eastcentral Arabian Sea along & off Maharashtra coast and northeast Arabian Sea along & off Gujarat coast during 3<sup>rd</sup> – 4<sup>th</sup> June. Fishermen out at Sea are advised to return to coasts by today, the 31<sup>st</sup> May.
- The fishermen are advised not to venture into Westcentral Arabian Sea along & off South Oman – Yemen coasts during next 24 hours.

*The next bulletin will be issued at 0830 hrs IST of today, the 1<sup>st</sup> June, 2020.*

**(Sunitha Devi. S)**  
**Scientist-E, RSMC, New Delhi**

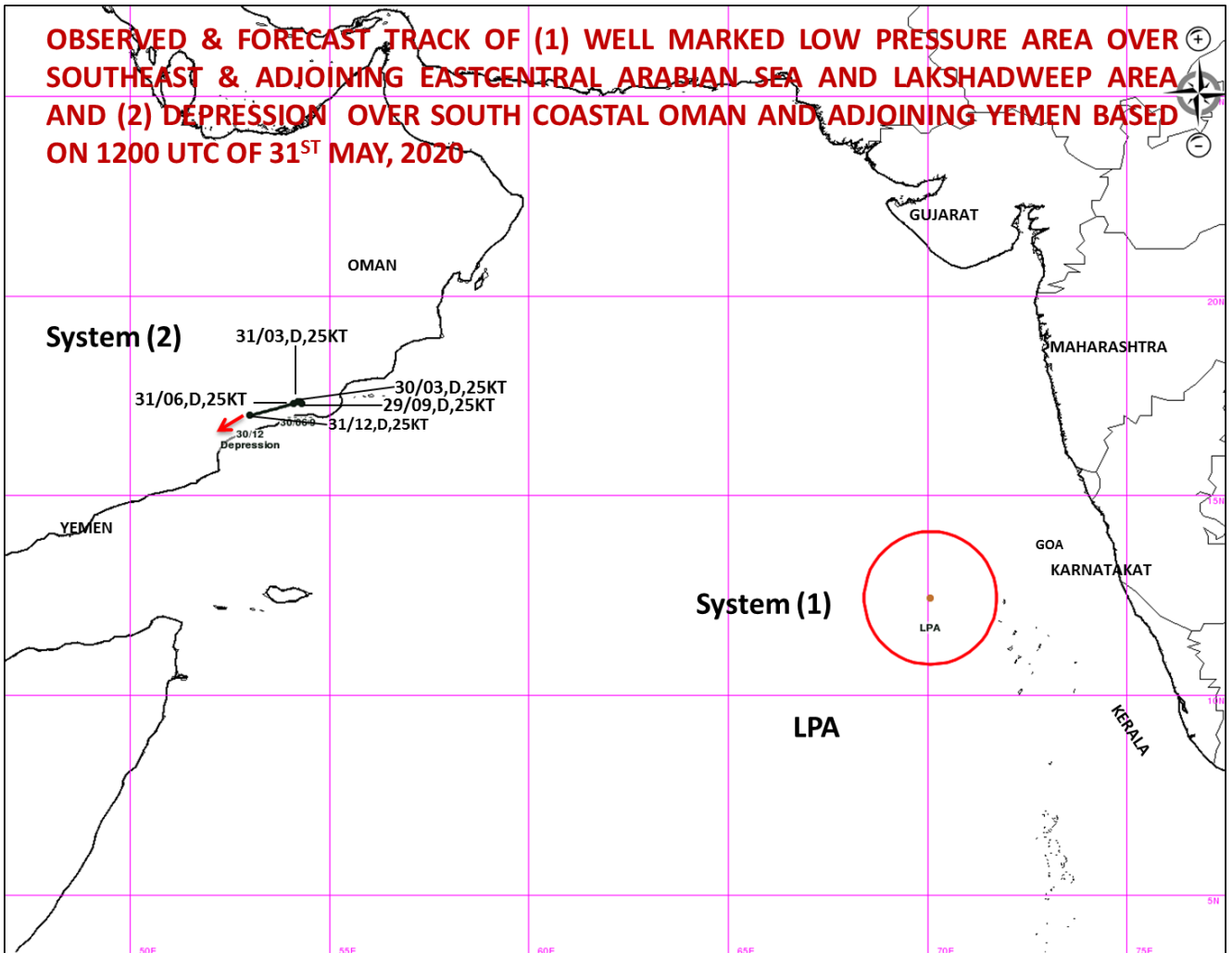
**Copy to: ACWC Chennai/ ACWC Mumbai/ MC Goa/ MC Bengaluru/ CWC Ahmedabad/ Thiruvananthapuram.**

**Spatial rainfall distribution: Isolated: <25%, A few: 26-50%, Many: 51-75%, Most: 76-100%**  
**Rainfall amount (mm): Heavy rain: 64.5 – 115.5, Very heavy rain: 115.6 – 204.4, Extremely heavy rain: 204.5 or more.**



**Spatial rainfall distribution: Isolated: <25%, A few: 26-50%, Many: 51-75%, Most: 76-100%**  
**Rainfall amount (mm): Heavy rain: 64.5 – 115.5, Very heavy rain: 115.6 – 204.4, Extremely heavy rain: 204.5 or more.**

**OBSERVED & FORECAST TRACK OF (1) WELL MARKED LOW PRESSURE AREA OVER SOUTHEAST & ADJOINING EASTCENTRAL ARABIAN SEA AND LAKSHADWEEP AREA AND (2) DEPRESSION OVER SOUTH COASTAL OMAN AND ADJOINING YEMEN BASED ON 1200 UTC OF 31<sup>ST</sup> MAY, 2020**



**Spatial rainfall distribution: Isolated: <25%, A few: 26-50%, Many: 51-75%, Most: 76-100%**

**Rainfall amount (mm): Heavy rain: 64.5 – 115.5, Very heavy rain: 115.6 – 204.4, Extremely heavy rain: 204.5 or more.**