



India Meteorological Department
(Ministry of Earth Sciences)

BULLETIN NO. 20 (BoB/02/2023)

TIME OF ISSUE: 2050 HOURS IST DATED: 12.05.2023
FROM: INDIA METEOROLOGICAL DEPARTMENT (FAX NO. 24643965/24699216/24623220)

TO: CONTROL ROOM, NDM, MINISTRY OF HOME AFFAIRS (FAX.NO. 23093750)
CONTROL ROOM NDMA (FAX.NO. 26701729)
CABINET SECRETARIAT (FAX.NO.23012284, 23018638)
PS TO HON'BLE MINISTER FOR S & T AND EARTH SCIENCES (FAX NO.23316745)
SECRETARY, MOES (FAX NO. 24629777)
H.Q. (INTEGRATED DEFENCE STAFF AND CDS) (FAX NO. 23005137/23005147)
DIRECTOR GENERAL, DOORDARSHAN (23385843)
DIRECTOR GENERAL, AIR (23421105, 23421219)
PIB MOES (FAX NO. 23389042)
UNI (FAX NO. 23355841)
D.G. NATIONAL DISASTER RESPONSE FORCE (NDRF) (FAX NO. 26105912, 2436 3260)
DIRECTOR, PUNCTUALITY, INDIAN RAILWAYS (FAX NO. 23388503)
CHIEF SECRETARY, ANDAMAN & NICOBAR ISLANDS (FAX NO. 03192- 232656)
CHIEF SECRETARY, GOVT. WEST BENGAL (FAX NO. 033-22144328)
CHIEF SECRETARY, GOVT. OF ODISHA (FAX NO. 0674 -2536660)
CHIEF SECRETARY, GOVT. OF ANDHRA PRADESH (FAX NO. 0863-2441029, 08645-246600)
CHIEF SECRETARY, GOVT. OF TAMIL NADU (FAX NO. 044-25672304)
CHIEF SECRETARY, GOVT. OF PUDUCHERRY (FAX NO. 0413-2337575, 2334145)
CHIEF SECRETARY, GOVT. OF TRIPURA (FAX NO. 0381-2414013, 2413200)
CHIEF SECRETARY, GOVT. OF MIZORAM (FAX NO. 0389-2322745, 2320588)
CHIEF SECRETARY, GOVT. OF ASSAM (FAX NO. 0361-2260900)
CHIEF SECRETARY, GOVT. OF MANIPUR (FAX NO. 0385-2452629)
CHIEF SECRETARY, GOVT. OF NAGALAND (FAX NO. 0370-2270057)

Sub: Very Severe Cyclonic storm "Mocha" (pronounced as "Mokha") over Central Bay of Bengal

The **Very Severe Cyclonic Storm "Mocha"** (pronounced as "**Mokha**") over Central Bay of Bengal moved nearly north-northeastwards with a speed of 12 kmph during past 06 hours and lay centered at 1730 hours IST of today, the 12th May 2023 over the same region near latitude 14.6°N and longitude 88.6°E, about 550 km northwest of Port Blair, 730 km south-southwest of Cox's Bazar (Bangladesh) and 760 km southwest of Sittwe (Myanmar).

It is very likely to move north-northeastwards and intensify further into an Extremely Severe Cyclonic Storm over Eastcentral Bay of Bengal during night of today, the 12th May 2023. It is likely to cross southeast Bangladesh and north Myanmar coasts between Cox's Bazar (Bangladesh) and Kyaukpyu (Myanmar), close to Sittwe (Myanmar) around noon of 14th May, 2023 as a **Very Severe Cyclonic Storm with maximum sustained wind speed of 150-160 kmph gusting to 175 kmph.**

Forecast track and intensity are given below:

Date/Time (IST)	Position (Lat. °N/ long. °E)	Maximum sustained surface wind speed (Kmph)	Category of cyclonic disturbance
12.05.23/1730	14.6/88.6	140-150 gusting to 165	Very Severe Cyclonic Storm
12.05.23/2330	15.2/88.9	160-170 gusting to 185	Extremely Severe Cyclonic Storm
13.05.23/0530	15.9/89.3	170-180 gusting to 200	Extremely Severe Cyclonic Storm
13.05.23/1130	16.7/89.9	180-190 gusting to 210	Extremely Severe Cyclonic Storm
13.05.23/1730	17.5/90.5	180-190 gusting to 210	Extremely Severe Cyclonic Storm
14.05.23/0530	19.2/91.9	170-180 gusting to 200	Extremely Severe Cyclonic Storm
14.05.23/1130	20.2/92.7	150-160 gusting to 175	Extremely Severe Cyclonic Storm
14.05.23/1730	21.2/93.6	120-130 gusting to 145	Very Severe Cyclonic Storm
15.05.23/0530	23.5/95.5	55-65 gusting to 75	Deep Depression

Warnings:

(i) Rainfall (warning graphics enclosed)

- ❖ **Andaman & Nicobar Islands:** Rainfall at most places with Heavy rainfall at isolated places is likely on 12th May.
- ❖ **Tripura & Mizoram:** Rainfall at most places with Heavy rainfall at isolated places is likely on 13th May and heavy to very heavy rainfall at isolated places on 14th May.
- ❖ **Nagaland, Manipur & south Assam:** Rainfall at many places with Heavy rainfall at isolated places is on 14th May.

(ii) Wind warning:

- ❖ **Andaman Islands:**
Squally wind speed reaching 50-60 kmph gusting to 70 kmph is likely to prevail on 12th May.
- ❖ **Tripura, Mizoram & south Manipur:**
Squally wind speed reaching 50-60 kmph gusting to 70 kmph is very likely to prevail on 14th May.
- ❖ **North Andaman Sea:**
Squally wind speed reaching 50-60 kmph gusting to 70 kmph is likely to prevail over North Andaman Sea on 12th May and 45-55 kmph gusting 65 kmph on 13th May.
- ❖ **Southeast Bay of Bengal:**
Gale wind speed reaching 115-125 kmph gusting to 145 kmph is prevailing and likely to continue till evening and decrease thereafter becoming squally wind speed reaching 55-65 kmph gusting to 75 kmph on 13th May.
- ❖ **Adjoining areas of southwest Bay of Bengal:**
Squally wind speed reaching 50-60 kmph gusting to 70 kmph is likely to prevail till 13th May morning.
- ❖ **Eastcentral Bay of Bengal:**
Gale wind speed reaching 140-150 kmph gusting to 165 kmph is prevailing over the region. It is very likely to increase becoming 180-190 kmph gusting to 210 kmph till 13th May evening and gradually decrease thereafter.

- ❖ **Westcentral Bay of Bengal:**
Gale wind speed reaching 140-150 kmph gusting to 165 kmph is prevailing over the region and likely to become 150-160 kmph gusting to 185 kmph over southeastern sector of the region till 13th May morning. It will decrease gradually becoming 90-100 kmph gusting to 110 kmph by 13th May evening and significantly decrease thereafter.
- ❖ **Northeast Bay of Bengal:**
Squally wind speed reaching 55-65 kmph gusting to 75 kmph is prevailing and likely to become gale wind speed reaching 70-80 gusting to 90 kmph from 13th May morning. It would gradually increase becoming 180-190 kmph gusting 210 kmph from 13th evening till 14th May morning. It is likely to decrease thereafter to 150-16 kmph gusting to 175 kmph at the time of landfall. It is likely to decrease rapidly after the landfall.
- ❖ **Adjoining areas of Northwest Bay of Bengal:**
Gale wind speed reaching 60-70 kmph gusting to 80 kmph is likely to prevail over southeast sector of the region and 45-55 kmph gusting to 65 kmph over the remaining areas of northwest Bay of Bengal from 13th May to 14th May forenoon and decrease gradually thereafter.

(iii) Sea condition

- ❖ **Andaman Sea:**
Very rough to rough over north Andaman Sea during 12th-13th May.
- ❖ **Southeast Bay of Bengal:**
Very high to phenomenal sea condition is likely to prevail on 12th May.
Very rough to rough on 13th May.
- ❖ **Eastcentral Bay of Bengal:**
Very High to phenomenal sea condition is prevailing and would continue to be phenomenal till 14th May morning. It will improve gradually thereafter.
- ❖ **Adjoining areas of Westcentral Bay of Bengal:**
Very high to phenomenal sea condition is prevailing and would continue to be phenomenal till 13th May morning. It will gradually improve thereafter.
- ❖ **Northeast Bay of Bengal:**
Rough to very rough on 12th May. It would become very rough to high till 13th May evening and very high to phenomenal till 14th May afternoon.
- ❖ **Adjoining areas of Northwest Bay of Bengal:**
Rough to very rough during 13th-14th May.

(iv) Fishermen Warning (warning graphics enclosed)

- ❖ Fishermen, ships, boats and trawlers are advised not to venture into southeast Bay of Bengal till 12th May, central Bay of Bengal and north Andaman Sea till 14th May and into northeast Bay of Bengal during 12th-14th May.
- ❖ Those over central & northeast Bay of Bengal and north Andaman Sea are advised to return to coast.

(v) Damage expected & Action suggested: Mizoram, Tripura, and South Manipur

- ❖ Minor Damage to loose/unsecured structures
- ❖ Some breaches in kutchra road due to heavy rain with the possibility of landslide, in vulnerable areas
- ❖ Uprooting of small trees and breaking of tree branches.
- ❖ Damage to small trees like Banana, Drum stick and Papaya etc.
- ❖ Damage to standing crops

Action Suggested

- ❖ Immediately harvest mature fruits and crops.

- ❖ Provide staking and cover to vegetables nurseries, fruit orchards.
- ❖ Avoid application of fertilizers and pesticides.
- ❖ Keep livestock inside sheds

(vi) Damage expected & Action suggested: Marine community (shipping, offshore industries, Tourism etc. over Bay of Bengal, Andaman Sea & Andaman & Nicobar Islands)

- ❖ Very rough to phenomenal sea could effect marine operation and offshore activities.
- ❖ Regulation of tourism and offshore activities and shipping near Andaman & Nicobar Islands till 13th May.
- ❖ Regulation of shipping activity over the sea areas of southeast Bay of Bengal and Andaman Sea till 12th May, eastcentral Bay of Bengal till 14th May, and westcentral Bay of Bengal till 13th May.
- ❖ Regulation of shipping activity over the sea areas of northeast Bay of Bengal during 12th-14th May.

The system is under continuous surveillance and the next message will be issued at 2330 hours IST of today, the 12th May 2023.

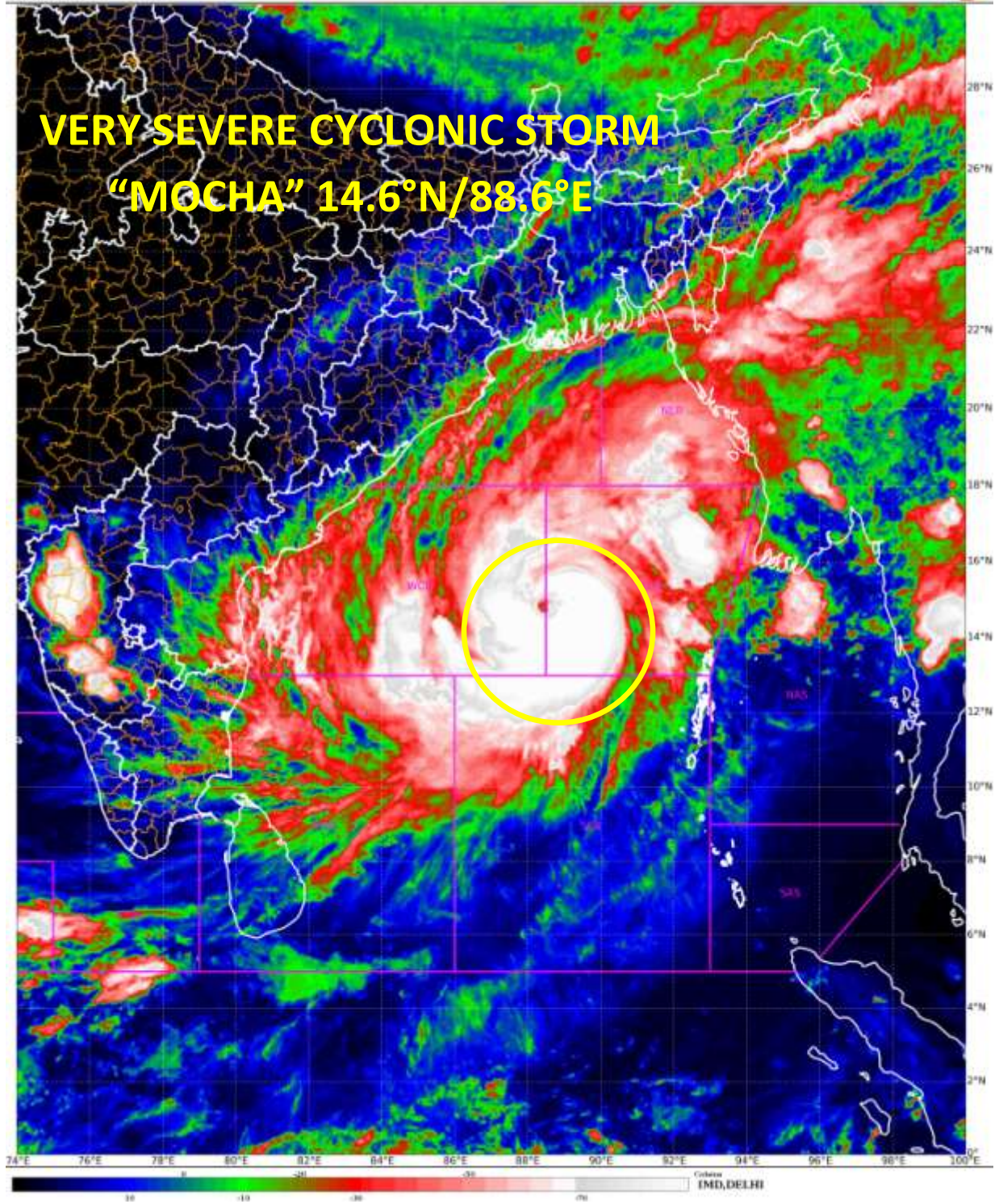
(Dr. Ananda Kumar Das)

Scientist F, Cyclone Warning Division, New Delhi

Copy to: ACWC Kolkata/ ACWC Chennai/ CWC Bhubaneswar/CWCVisakhapatnam/MO Port Blair

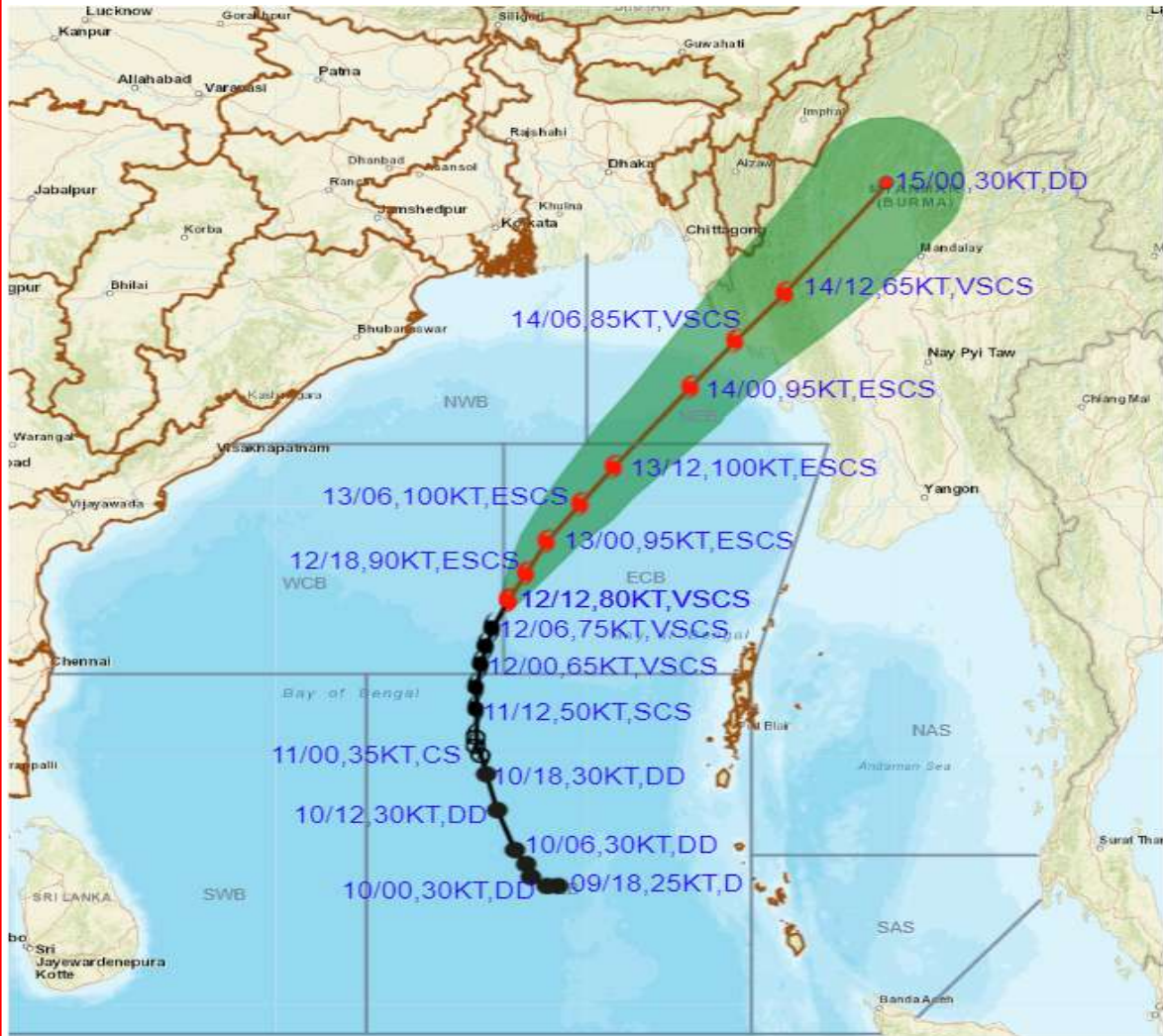


VERY SEVERE CYCLONIC STORM "MOCHA" 14.6°N/88.6°E





OBSERVED AND FORECAST TRACK ALONGWITH CONE OF UNCERTAINTY OF VERY SEVERE CYCLONIC STORM MOCHA OVER CENTRAL BAY OF BENGAL BASED ON 1200 UTC (1730 HRS IST) OF 12TH



DATE/TIME IN UTC
 IST=UTC + 0530
 L: LOW PRESSURE AREA
 WML: WELL MARKED LOW PRESSURE AREA
 D: DEPRESSION (17-27 KT)
 DD: DEEP DEPRESSION (28-33 KT)
 CS: CYCLONIC STORM (34-47 KT)
 SCS: SEVERE CYCLONIC STORM (48-63KT)
 VSCS: VERY SEVERE CYCLONIC STORM (64-89 KT)
 ESCS: EXTREMELY SEVERE CYCLONIC STORM (90-119 KT)
 SuCS: SUPER CYCLONIC STORM (\geq 120 KT)

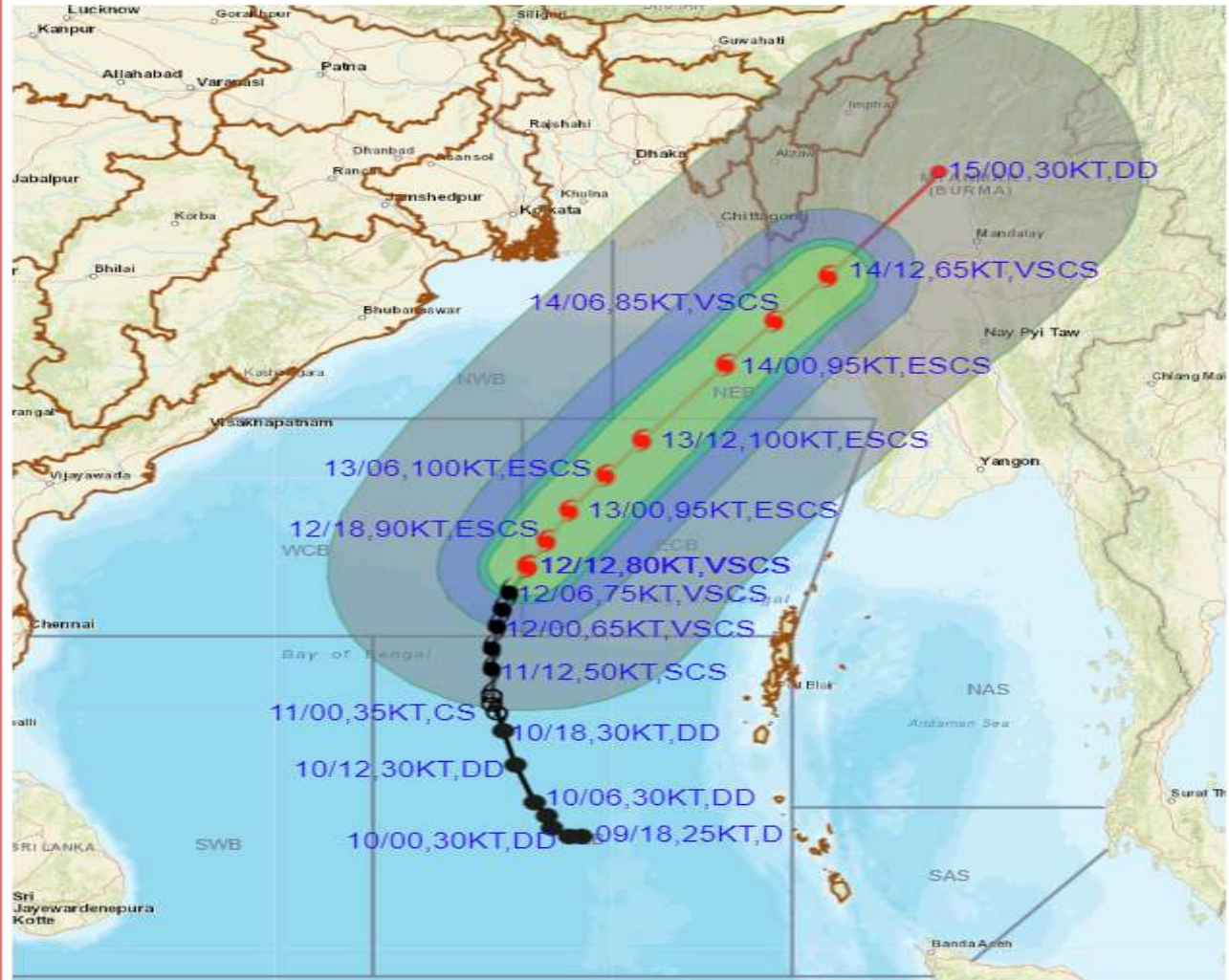
- LESS THAN 34 KT
- 34-47 KT
- \geq 48 KT
- OBSERVED TRACK
- FORECAST TRACK
- ▲ CONE OF UNCERTAINTY

Forecast distance (km) and direction of the centre from nearest 5 coastal stations

Forecast Date and Time	Lead Period	Lat	Lon	Station 1	Station 2	Station 3	Station 4	Station 5
12.05.23/1200	0	14.6	88.6	MAYA BANDAR (503,WNW)	COCO ISLAND (517,W)	LONG ISLAND (528,WNW)	PORT BLAIR (553,NW)	HUT BAY (620,NW)
13.05.23/1200	24	17.5	90.5	MANAUNG (374,WSW)	SITTWE (386,SW)	KYAUKPYU (386,WSW)	TEKNAF (420,SSW)	SANDOWAY (422,WSW)
14.05.23/1200	48	21.2	93.6	MINDAT (42,WSW)	KYAUKTAW (108,ENE)	GANGAW (121,SSW)	NYAUNG-U (137,W)	TEKNAF (140,ENE)



OBSERVED AND FORECAST TRACK ALONGWITH QUADRANT WIND DISTRIBUTION OF VERY SEVERE CYCLONIC STORM MOCHA OVER CENTRAL BAY OF BENGAL BASED ON 1200 UTC (1730 HRS IST) OF 12TH MAY 2023.



DATE/TIME IN UTC

IST=UTC + 0530

L: LOW PRESSURE AREA

WML: WELL MARKED LOW PRESSURE AREA

D: DEPRESSION (17-27 KT)

DD: DEEP DEPRESSION (28-33 KT)

CS: CYCLONIC STORM (34-47 KT)

SCS: SEVERE CYCLONIC STORM (48-63KT)

VSCS: VERY SEVERE CYCLONIC STORM (64-89 KT)

ESCS: EXTREMELY SEVERE CYCLONIC STORM (90-119 KT)

SuCS: SUPER CYCLONIC STORM (≥ 120 KT)

- LESS THAN 34 KT
- 34-47 KT
- ≥ 48 KT
- OBSERVED TRACK
- FORECAST TRACK
- CONE OF UNCERTAINTY
- AREA OF MAXIMUM SUSTAINED WIND SPEED:
- 28-33 KT (52-61 KMPH)
- 34-49 KT (62-91 KMPH)
- 50-63 KT (92-117 KMPH)
- ≥ 64 KT (≥ 118 KMPH)

IMPACT OVER THE SEA

MSW (knot/kmph)	Impact	Action
28-33 (52-61)	Very rough seas	Total suspension of fishing operations
34-49 (62-91)	High to very high seas	Total suspension of fishing operations
50-63 (92-117)	Very high seas	Total suspension of fishing operations
≥ 64 (≥ 118)	Phenomenal	Total suspension of fishing operations



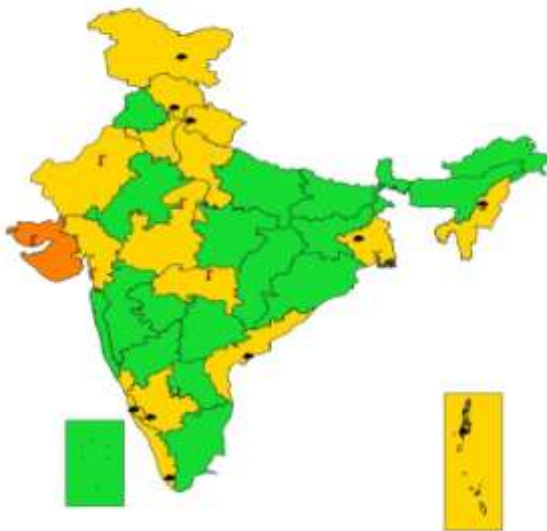
**SUBDIVISIONWISE WEATHER WARNING FOR DAY 1
(12-5-2023)**



- | | | |
|-----------------------------|------------------------|--------------------------|
| Subdivision Warning | ☁ Dust Storm | Subdivision color |
| ☔ Heavy Rain | 🌪 Strong Surface Winds | 🟢 NO WARNING |
| ❄ Heavy Snow | 🔥 Heat Wave | 🟡 WATCH(BE UPDATED) |
| ⚡ Thunderstorms & Lightning | ❄ Cold wave | 🟠 ALERT (BE PREPARED) |
| ☁ Hailstorm | 🌫 Fog | 🔴 WARNING (TAKE ACTION) |



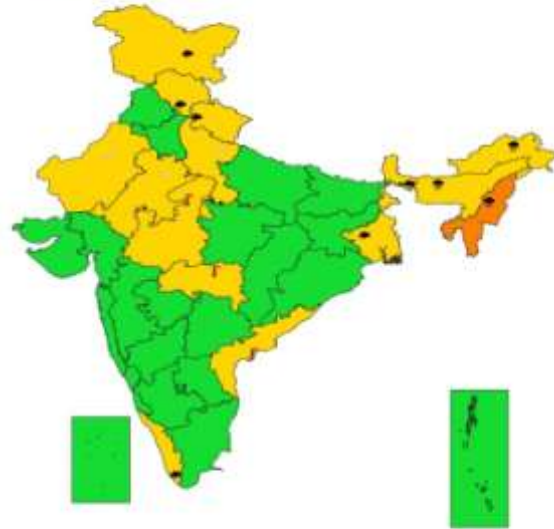
**SUBDIVISIONWISE WEATHER WARNING FOR DAY 2
(13-5-2023)**



- | | | |
|-----------------------------|------------------------|--------------------------|
| Subdivision Warning | ☁ Dust Storm | Subdivision color |
| ☔ Heavy Rain | 🌪 Strong Surface Winds | 🟢 NO WARNING |
| ❄ Heavy Snow | 🔥 Heat Wave | 🟡 WATCH(BE UPDATED) |
| ⚡ Thunderstorms & Lightning | ❄ Cold wave | 🟠 ALERT (BE PREPARED) |
| ☁ Hailstorm | 🌫 Fog | 🔴 WARNING (TAKE ACTION) |



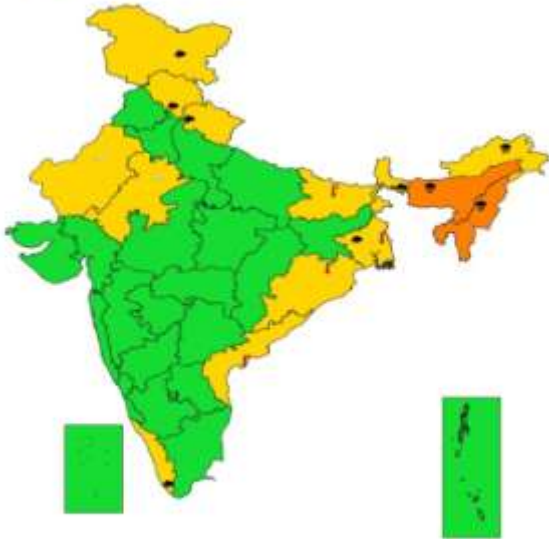
**SUBDIVISIONWISE WEATHER WARNING FOR DAY 3
(14-5-2023)**



- | | | |
|-----------------------------|------------------------|--------------------------|
| Subdivision Warning | ☁ Dust Storm | Subdivision color |
| ☔ Heavy Rain | 🌪 Strong Surface Winds | 🟢 NO WARNING |
| ❄ Heavy Snow | 🔥 Heat Wave | 🟡 WATCH(BE UPDATED) |
| ⚡ Thunderstorms & Lightning | ❄ Cold wave | 🟠 ALERT (BE PREPARED) |
| ☁ Hailstorm | 🌫 Fog | 🔴 WARNING (TAKE ACTION) |



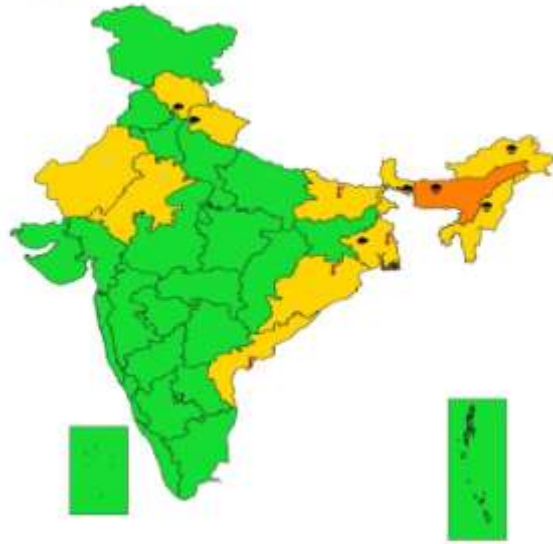
SUBDIVISIONWISE WEATHER WARNING FOR DAY 4 (15-5-2023)



- | | | |
|-----------------------------|------------------------|--------------------------|
| Subdivision Warning | ☁ Dust Storm | Subdivision color |
| ☁ Heavy Rain | 🌪 Strong Surface Winds | 🟢 NO WARNING |
| ☁ Heavy Snow | 🔥 Heat Wave | 🟡 WATCH(BE UPDATED) |
| ⚡ Thunderstorms & Lightning | ❄ Cold wave | 🟠 ALERT (BE PREPARED) |
| 🌫 Haze/fog | 🌫 Fog | 🔴 WARNING (TAKE ACTION) |



SUBDIVISIONWISE WEATHER WARNING FOR DAY 5 (16-5-2023)



- | | | |
|-----------------------------|------------------------|--------------------------|
| Subdivision Warning | ☁ Dust Storm | Subdivision color |
| ☁ Heavy Rain | 🌪 Strong Surface Winds | 🟢 NO WARNING |
| ☁ Heavy Snow | 🔥 Heat Wave | 🟡 WATCH(BE UPDATED) |
| ⚡ Thunderstorms & Lightning | ❄ Cold wave | 🟠 ALERT (BE PREPARED) |
| 🌫 Haze/fog | 🌫 Fog | 🔴 WARNING (TAKE ACTION) |

Fishermen warning graphics

