



Government of India  
Ministry of Earth Sciences  
India Meteorological Department



Press Release

Date: 25<sup>th</sup> June, 2025

Time of Issue: 1500 hours IST

**Subject: Heavy to very heavy rainfall activity likely to continue over many parts of Northwest, central, east & northeast India during next 7 days with isolated extremely heavy rainfall over Odisha and Gujarat Region on 25<sup>th</sup> June, 2025.**

**Southwest Monsoon:**

- ❖ Southwest monsoon has further advanced over remaining parts of north Arabian Sea; some more parts of Rajasthan, West Uttar Pradesh, Haryana and Punjab.
- ❖ The Northern Limit of Monsoon continues to pass through 26.0°N/60.0°E, 26.0°N/65.0°E, 26.5°N/70.0°E, Nagaur, Sikar, Bharatpur, Rampur, Sonipat, Bhatinda and 31.0°N/70.0°E.
- ❖ Conditions are favourable for further advance of Southwest monsoon over some more parts of Rajasthan, Punjab, Haryana; Delhi and remaining parts of West Uttar Pradesh during next 24 hours.

**Realised weather during past 24 hours till 0830 hours IST of today, the 25<sup>th</sup> June, 2025 (Annexure I):**

- ❖ **Heavy to very heavy rainfall with extremely heavy falls** recorded at isolated places over Gujarat Region and southwest Madhya Pradesh.
  - ❖ **Heavy to very heavy rainfall** recorded at isolated places over East Rajasthan, North Haryana, Himachal Pradesh, Uttarakhand, East Madhya Pradesh, Andaman Islands, Madhya Maharashtra, Coastal & north Interior Karnataka, Arunachal Pradesh; **Heavy rainfall** at isolated places over West Rajasthan, Jammu-Kashmir, Vidarbha, Chhattisgarh, Sub-Himalayan West Bengal, North Odisha, Jharkhand, west Bihar, Uttar Pradesh, south coastal Maharashtra (Konkan), interior Tamil Nadu, north & central Kerala, South Interior Karnataka, Assam and Manipur.
  - ❖ **Thunderstorm accompanied with Squally/Gusty winds with speed 40-80 kmph** at isolated places over Gujarat, Himachal Pradesh, Madhya Maharashtra, Andaman & Nicobar Islands, West Uttar Pradesh, Marathwada, West Madhya Pradesh, Coastal Andhra Pradesh & Yanam, Telangana, Rayalaseema, Tamil Nadu, Kerala and Konkan.
- For more details of realised weather, kindly refer Annexure I,**

**i. Weather Systems, Forecast and Warnings (refer to Annexure II & III):**

- ❖ An upper air cyclonic circulation lies over northeast Madhya Pradesh extending upto middle tropospheric levels tilting southwards with height.
- ❖ A **trough runs** from northeast Arabian Sea to the above cyclonic circulation over northeast Madhya Pradesh in lower & middle tropospheric levels.
- ❖ An upper air cyclonic circulation lies over Northwest Bay of Bengal and adjoining north Odisha-west Bengal coasts extending up to middle tropospheric levels tilting southwestwards with height. Under its influence, a low-pressure area is likely to form over the same region during next 24 hours.
- ❖ Under the influence of these systems, the following weather is likely:

**West India:**

- ✓ **Extremely heavy rainfall (>20 cm/24 hours) likely at isolated places over Gujarat Region on 25<sup>th</sup> June.**
- ✓ **Heavy to very heavy rainfall** at isolated places likely over Konkan & Goa, Ghat areas of Madhya Maharashtra, Gujarat region and **isolated heavy rainfall** over Saurashtra & Kutch during 25<sup>th</sup> June-01<sup>st</sup> July.
- ✓ Light/moderate rainfall at most/many places likely over the region during next 7 days.

#### Northwest India:

- ✓ Isolated **heavy rainfall** likely over Punjab, Haryana, Himachal Pradesh, Uttarakhand, West Uttar Pradesh during 25<sup>th</sup> June-01<sup>st</sup> July; Rajasthan during 25<sup>th</sup>-29<sup>th</sup>; Jammu-Kashmir during 25<sup>th</sup>-27<sup>th</sup>; East Uttar Pradesh during 28<sup>th</sup> June-01<sup>st</sup> July with **very heavy rainfall** over East Rajasthan during 25<sup>th</sup>-28<sup>th</sup>; Uttarakhand during 25<sup>th</sup>-27<sup>th</sup>, Haryana, Himachal Pradesh on 25<sup>th</sup>; West Rajasthan on 27<sup>th</sup>; Punjab on 25<sup>th</sup> & 26<sup>th</sup>, West Uttar Pradesh on 25<sup>th</sup> June & 01<sup>st</sup> July 27<sup>th</sup>; Jammu-Kashmir on 25<sup>th</sup> June and East Uttar Pradesh on 30<sup>th</sup> June & 01<sup>st</sup> July.
- ✓ Light/moderate rainfall at most/many places accompanied with **thunderstorm, lightning & gusty winds speed reaching 30-40 kmph** likely over Northwest India during 25<sup>th</sup> June-01<sup>st</sup> July.

#### East & Central India:

- ✓ **Extremely heavy rainfall (>20 cm/24 hours) likely at isolated places over Odisha on 25<sup>th</sup> June.**
- ✓ Isolated **heavy rainfall** over Madhya Pradesh, Vidarbha, Chhattisgarh during 25<sup>th</sup> June-01<sup>st</sup> July; Jharkhand, Odisha, Gangetic West Bengal during 25<sup>th</sup>-28<sup>th</sup>, Sub-Himalayan West Bengal & Sikkim, Bihar during 27<sup>th</sup> June-01<sup>st</sup> July with **very heavy rainfall** over Madhya Pradesh on 25<sup>th</sup>, 26<sup>th</sup> June & 01<sup>st</sup> July; Sub-Himalayan West Bengal & Sikkim on 28<sup>th</sup>; Bihar on 28<sup>th</sup> & 29<sup>th</sup>; Jharkhand, Odisha on 26<sup>th</sup> June.
- ✓ Light/moderate rainfall at most/many places accompanied with **thunderstorm, lightning & gusty winds speed reaching 40-50 kmph** likely over Andaman & Nicobar Islands, Madhya Pradesh, Vidarbha, Chhattisgarh, Gangetic West Bengal, Bihar, Jharkhand, Odisha during 25<sup>th</sup> June-01<sup>st</sup> July.

#### Northeast India:

- ✓ Light/moderate rainfall at most places accompanied with **thunderstorm, lightning and isolated heavy rainfall** likely to continue over Northeast India during next 7 days with **very heavy rainfall** over Arunachal Pradesh on 28<sup>th</sup> June.

#### South Peninsular India:

- ✓ Isolated **heavy rainfall** likely over Kerala, Karnataka, Tamil Nadu during 25<sup>th</sup>-28<sup>th</sup>; Coastal Andhra Pradesh & Yanam and Telangana on 25<sup>th</sup> June with **very heavy rainfall** over Interior Karnataka on 25<sup>th</sup>; Ghat areas of Tamil Nadu, Coastal Karnataka and Kerala on 25<sup>th</sup> & 26<sup>th</sup> June.
- ✓ **Strong surface winds** (speed reaching 40-60 kmph) very likely over Karnataka, Coastal Andhra Pradesh & Yanam, Rayalaseema, Telangana during 25<sup>th</sup>-29<sup>th</sup> June.
- ✓ Light/moderate rainfall at many/some places over Kerala & Mahe, Lakshadweep, Coastal Karnataka; isolated to scattered rainfall accompanied with isolated **thunderstorm, lightning** over Coastal Andhra Pradesh & Yanam, Telangana, Interior Karnataka during 25<sup>th</sup>-29<sup>th</sup> June.

#### Fishermen Warnings:

##### Arabian Sea:

- ❖ Fishermen are advised not to venture off south Gujarat- Karnataka-Kerala coasts and Lakshadweep area coast for day 1 & day 2 (25<sup>th</sup> & 26<sup>th</sup> June), along and off Gujarat coast for day 4 and day 5 (28<sup>th</sup> & 29<sup>th</sup> June); along and off Konkan coast for day 1, day 4 & day 5 (25<sup>th</sup>, 28<sup>th</sup> & 29<sup>th</sup> June), off Konkan coast for day 2 (26<sup>th</sup> June); along and off Goa coast for day 1 (25<sup>th</sup> June).
- ❖ Fishermen are advised not to venture along and off the Somalia coast and adjoining sea areas, Oman and adjoining Yemen coast & adjoining sea areas; over central & adjoining north, south Arabian Sea for day 1 to day 5 (25<sup>th</sup> – 30<sup>th</sup> June); most parts of northeast Arabian Sea for day 4 & day 5 (28<sup>th</sup> & 29<sup>th</sup> June).

##### Bay of Bengal:

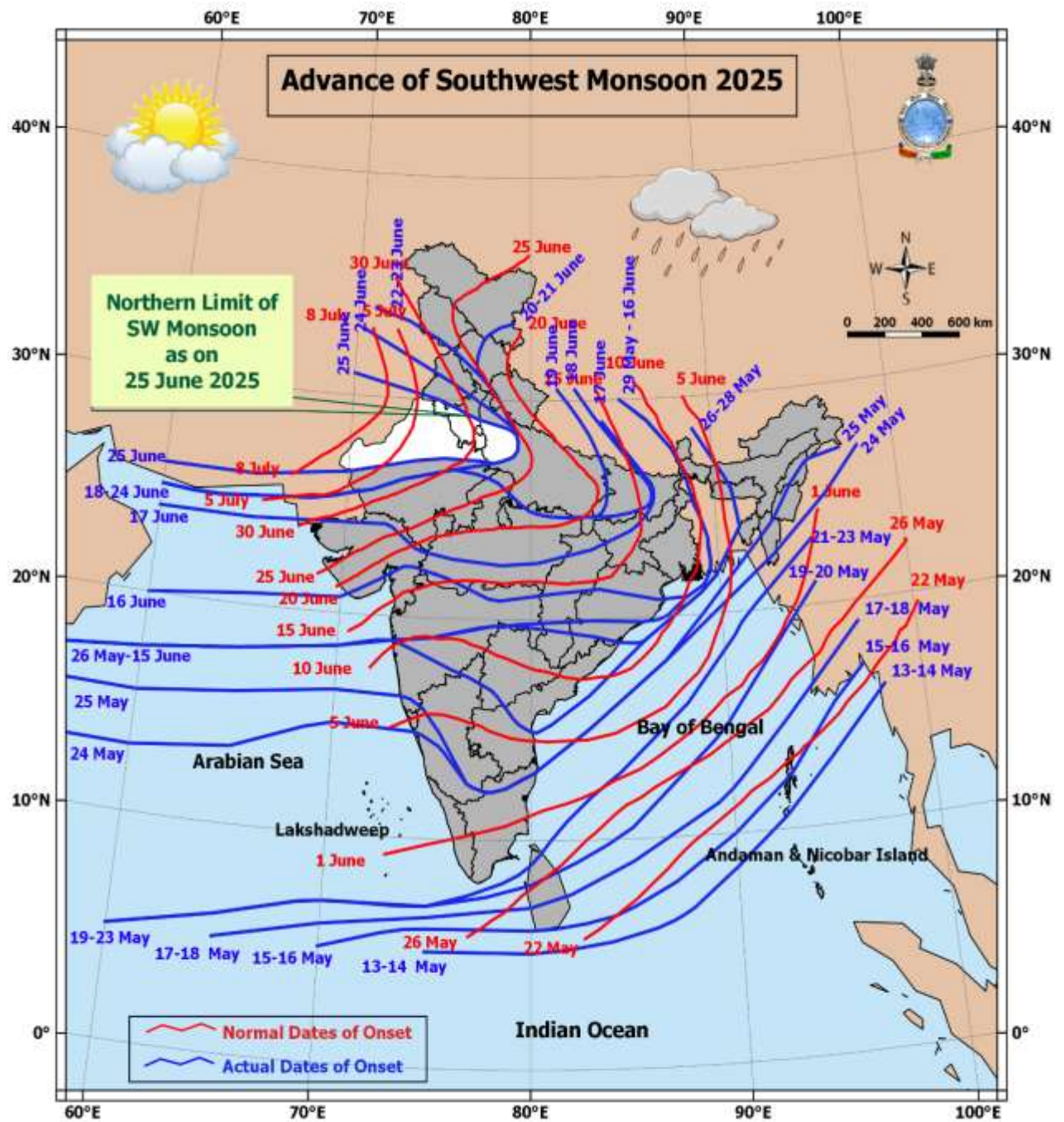
- ❖ Fishermen are advised not to venture along and off north Andhra Pradesh coast for day 1, day 3, day 4 (25<sup>th</sup>, 27<sup>th</sup> & 28<sup>th</sup> June), off north Andhra Pradesh coast for day 5 (29<sup>th</sup> June); along and off Odisha and West Bengal coasts for day 1 and day 2 (25<sup>th</sup> & 26<sup>th</sup> June); over many parts of westcentral Bay of Bengal and adjoining eastcentral Bay of Bengal for day 1 to day 3 (25<sup>th</sup> to 28<sup>th</sup> June); many parts of central Bay of Bengal for day 4 and day 5 (28<sup>th</sup> & 29<sup>th</sup> June); some parts of southwest Bay of Bengal for day 2 and day 5 (26<sup>th</sup> & 29<sup>th</sup> June).
- ❖ Fishermen are advised not to venture over the Gulf of Mannar for day 1 and day 2 (25<sup>th</sup> & 26<sup>th</sup> June).
- ❖ Total suspension of fishing operations is suggested over above mentioned areas and dates.

#### ii. Weather conditions and forecast over Delhi/NCR during 25<sup>th</sup> June to 28<sup>th</sup> June, 2025 (Annexure IV)

For more details, kindly refer National Weather Bulletin:

[https://mausam.imd.gov.in/responsive/all\\_india\\_forecast\\_bulletin.php](https://mausam.imd.gov.in/responsive/all_india_forecast_bulletin.php)

For District wise warnings refer: <https://mausam.imd.gov.in/responsive/districtWiseWarningGIS.php>



**Significant weather reported during past 24 hours till 0830 hours IST of today:**

**Rainfall recorded (in cm) during past 24 hours till 0830 hours IST of today, the 25<sup>th</sup> June:**

- ❖ **Gujarat Region:** Lunawada (dist Mahisagar) 22; Nandod (dist Narmada) 21; Dahod (dist Dahod) 19; Shahera (dist Panchmahal), Jetpur Pavi (dist Chhota Udepur), Dahod (dist Dahod) 18 Each; Dharampur (dist Valsad), Rajpipala (dist Narmada) 17 Each; Virpur (dist Mahisagar), Morva Hadaf (dist Panchmahal), Tilakwada (dist Narmada) 16 Each; Godhra (dist Panchmahal), Modasa (dist Aravalli), Singvad (dist Dahod) 14 Each; Limkheda (dist Dahod), Khergam (dist Navsari) 13 Each; Pardi (dist Valsad), Santrampur (dist Mahisagar), Garudeshwar (dist Narmada) 12 Each; Jambughoda (dist Panchmahal), Vapi (dist Valsad), Halol (dist Panchmahal), Sankheda (dist Chhota Udepur), Fatepura (dist Dahod), Bodeli (dist Chhota Udepur) 11 Each; Sagbara (dist Narmada), Vyara (dist Tapi), Sanjeli (dist Dahod), Kukarmunda (dist Tapi), Khanpur (dist Mahisagar) 10 Each;
- ❖ **West Madhya Pradesh:** Kathiwada (dist Alirajpur) 21; Jhabua- (dist Jhabua) 9; Kumbhraj (dist Guna) 8; Sarangpur (dist Rajgarh), Isagarh (dist Ashoknagar) 7 Each;
- ❖ **East Rajasthan:** Sallopat (dist Banswara) 19; Sagwara (dist Dungarpur) 14; Rajsamand (dist Rajsamand) 11; Mandal (dist Bhilwara) 10; Mangrol (dist Baran), Aspuri (dist Dungarpur), Sangod (dist Kota), Atru (dist Baran) 9 Each; Jaipur (dist Jaipur), Amet (dist Rajsamand) 8 Each; Banera (dist Bhilwara), Jamwaramgarh (dist Jaipur), Bagidora (dist Banswara) 7 Each;
- ❖ **North Haryana:** Shahbad (dist Kurukshetra) 17; Babain REV (dist Kurukshetra) 11; Partapnagar REV (dist Yamuna Nagar) 10; Bilaspur (dist Yamuna Nagar) 8; Chhachhrauli (dist Yamuna Nagar) 7;
- ❖ **North Interior Karnataka:** Khanapur (dist Belagavi) 17; Londa (dist Belagavi) 13; Kittur (dist Belagavi) 10;
- ❖ **Madhya Maharashtra:** Radhanagari (dist Kolhapur), Ajra (dist Kolhapur) 16 Each; Chandgad (dist Kolhapur) 12; Shahuwadi (dist Kolhapur), Kokrud (dist Sangli) 9 Each; Akalkuwa (dist Nandurbar) 7;
- ❖ **Andaman Islands:** Long Island (dist North & Middle Andaman) 16;
- ❖ **Himachal Pradesh:** Palampur (dist Kangra) 14; Jogindarnagar (dist Mandi) 11; Nahan (dist Sirmaur) 9; Renuka/dadhau (dist Sirmaur), Baijnath (dist Kangra) 8 Each;
- ❖ **East Madhya Pradesh:** Mandla (dist Mandla) 13; Vijayraghgarh (dist Katni), Singodi (dist Katni) 12 Each; Kusmi (dist Sidhi), Churhat (dist Sidhi) 10 Each; Jaitpur (dist Shahdol) 9; Mohangarh (dist Tikamgarh) 8; Balaghat- (dist Balaghat), Niwas (dist Mandla), Mehadwani (dist Dindori), Mohgaon (dist Mandla), Matiyari (dist Mandla) 7 Each;
- ❖ **Coastal Karnataka:** Yellapur (dist Uttara Kannada), Castle Rock (dist Uttara Kannada) 13 Each;
- ❖ **Uttarakhand:** Haldwani (dist Nainital) 13; Loharkhet (dist Bageshwar) 7;
- ❖ **West Bihar:** Imamganj (dist Gaya) 11; Chausha (dist Buxar) 8;
- ❖ **Jammu-Kashmir:** Katra (dist Reasi) 11; Rajouri (dist Rajouri), Reasi (dist Reasi), Reasi (dist Reasi) 9 Each; Udhampur (dist Udhampur) 7;
- ❖ **West Rajasthan:** Desuri (dist Pali) 11;
- ❖ **East Uttar Pradesh:** Patti (dist Pratapgarh) 7;
- ❖ **West Uttar Pradesh:** Nakur (dist Saharanpur) 11;
- ❖ **South Interior Karnataka:** Kammardi (dist Chikkamagaluru), Hunchadakatte (dist Shivamogga) 11 Each; Sringeri HMS (dist Chikkamagaluru), Agumbe Emo (dist Shivamogga) 9 Each; Kalasa (dist Chikkamagaluru), Somwarpet (dist Kodagu) 8 Each; Napoklu (dist Kodagu), Koppa (dist Chikkamagaluru) 7 Each;
- ❖ **North Odisha:** Rajnagar (dist Kendrapara) 11; Aul (dist Kendrapara), Chandua Kuliana (dist Mayurbhanj) 8 Each; Joda (dist Keonjhar) 7;
- ❖ **Assam:** Chauldhowaghat (dist Lakhimpur) 10; Kampur (dist Nagaon) 9; Silchar (dist Cachar) 8; Udaipur (dist Tinsukia) 7;
- ❖ **Interior Tamil Nadu:** Chinnakalar (dist Coimbatore) 9; Valparai (dist Coimbatore) 8; Upasi Tea Research (dist Coimbatore), Sholayar (dist Coimbatore), Cincona (dist Coimbatore) 7 Each;
- ❖ **North and central Kerala:** Vyttili (dist Wynad), Munnar Kseb (dist Idukki), Sengulam Dam (dist Idukki) 9 Each; Chemberi (dist Cannur) 8; Nilambur (dist Malappuram) 7;
- ❖ **Vidarbha:** Korchi (dist Gadchiroli) 8; Mulchera (dist Gadchiroli) 7;
- ❖ **Chhattisgarh:** Bamhndih (dist Janjgir) 8; Janjgir (dist Janjgir), Janakpur Bharatpur (dist Manendragarh Bharatpur) 7 Each;
- ❖ **Arunachal Pradesh:** Pasighat (dist East Siang), Basar (dist West Siang), Basar (dist West Siang) 8 Each; Tezu (dist Lohit) 7;
- ❖ **Manipur:** Chottabekra (dist Imphal West) 7;
- ❖ **South coastal Maharashtra (Konkan):** Dodamarg (dist Sindhudurg) 7;
- ❖ **Jharkhand:** Jamtara Fmo (dist Jamtara), Icar Namkum (dist Ranchi), Gola (dist Ramgarh) 7 Each;
- ❖ **Sub Himalayan West Bengal:** Washabari Tea Estate (dist Jalpaiguri) 7.

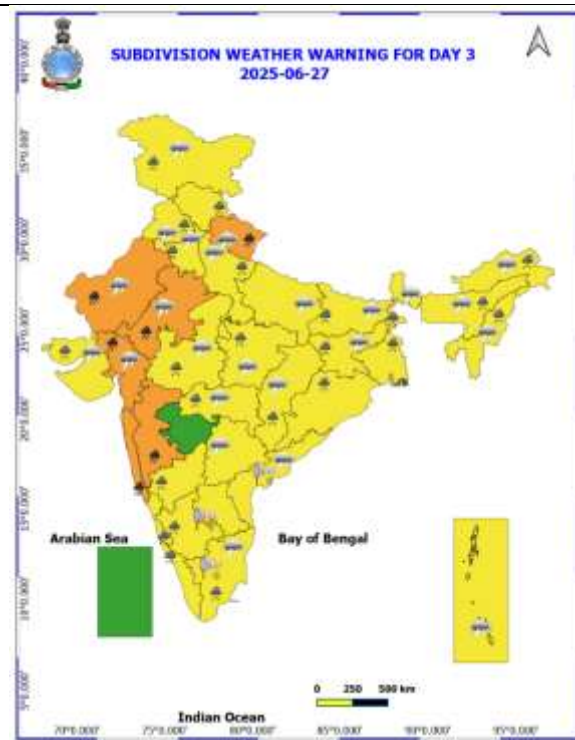
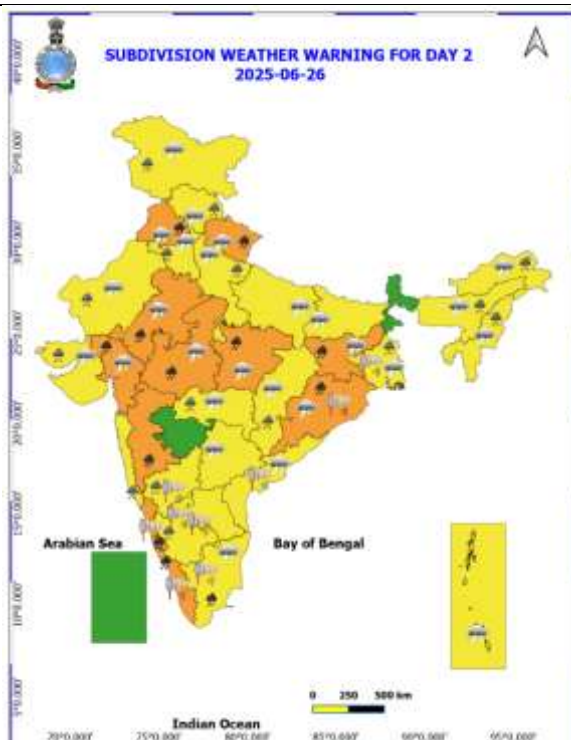
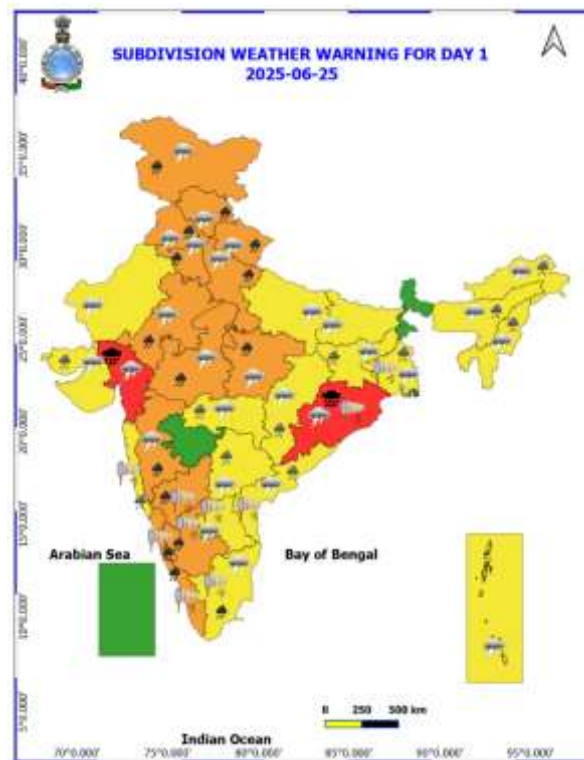
**Realised Gusty Winds (kmph) During Past 24 hours ending at 0830 hrs IST of today the 25<sup>th</sup> June:**

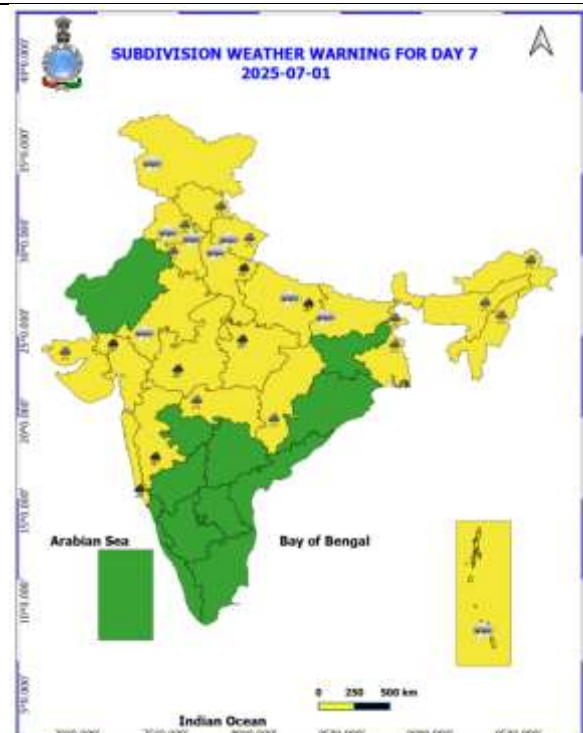
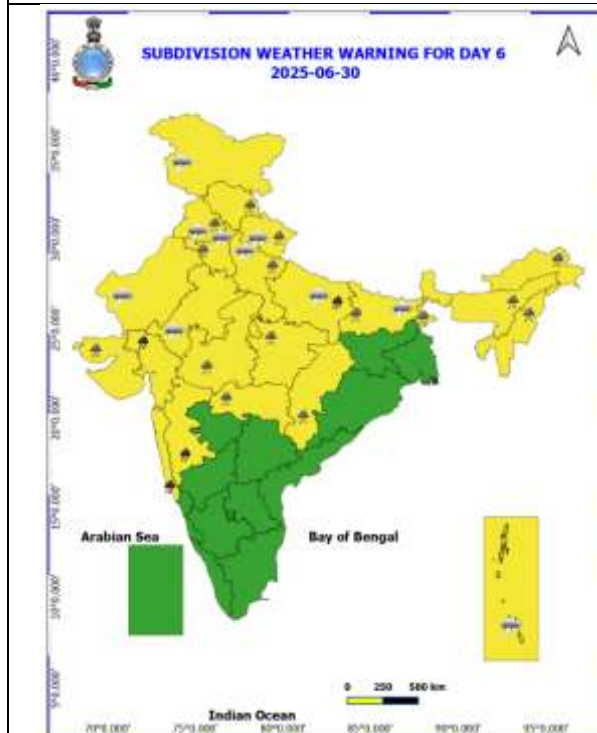
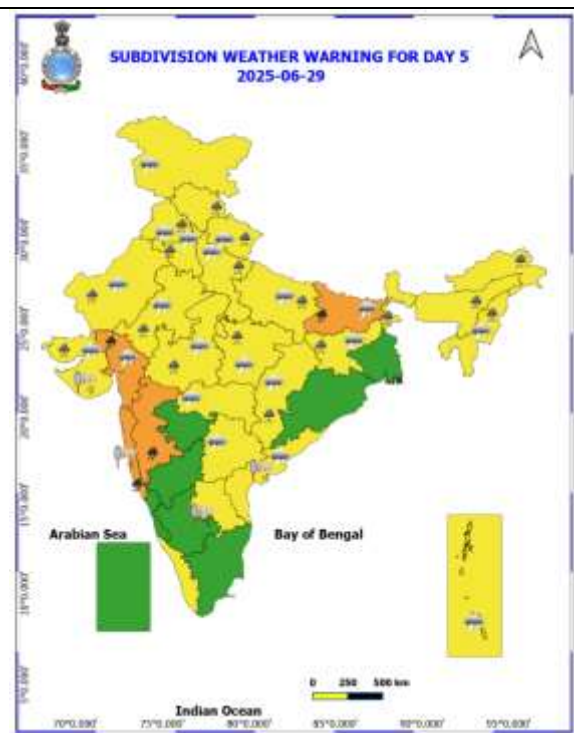
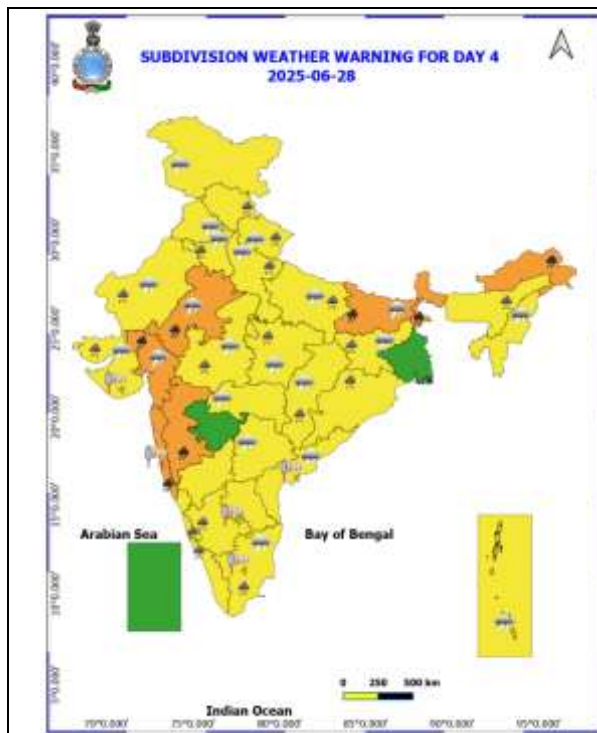
- ❖ **Gujarat Region:** (Ahmedabad) Arnej 76;
- ❖ **Himachal Pradesh:** Tabo 56;
- ❖ **Madhya Maharashtra:** Vilholi (NASHIK) 56, Kalwan (NASHIK) 54, Mahabaleshwar 54;
- ❖ **Andaman & Nicobar Islands:** Sri Vijayapuram (50);
- ❖ **Saurashtra & Kutch:** (Amreli) Dhari 50;
- ❖ **West Uttar Pradesh:** Gautam buddha Nagar 44;
- ❖ **Marathwada:** Latur 48, Beed (Ambejogai) 44;
- ❖ **West Madhya Pradesh:** Ujjain 44;
- ❖ **Coastal Maharashtra (Konkan):** Santacruz (MUMBAI) 43



Table-1								
7 Days Rainfall Forecast								
S.No.	Subdivision	25- Jun	26- Jun	27- Jun	28- Jun	29- Jun	30- Jun	1- Jul
		Day 1	Day 2	Day 3	Day 4	Day 5	Day 6	Day 7
1	ANDAMAN & NICOBAR ISLANDS	FWS	WS	WS	WS	FWS	FWS	FWS
2	ARUNACHAL PRADESH	FWS	FWS	FWS	WS	WS	WS	FWS
3	ASSAM & MEHGHALAYA	WS	FWS	FWS	FWS	FWS	FWS	FWS
4	NAGALAND, MANIPUR, MIZORAM AND TRIPURA	WS	FWS	FWS	FWS	FWS	FWS	FWS
5	SUB HIMALAYAN WEST BENGAL & SIKKIM	FWS	FWS	WS	WS	WS	WS	FWS
6	GANGETIC WEST BENGAL	WS	WS	WS	WS	FWS	FWS	FWS
7	ODISHA	WS	WS	FWS	FWS	SCT	SCT	SCT
8	JHARKHAND	WS	WS	WS	WS	WS	FWS	FWS
9	BIHAR	SCT	SCT	SCT	FWS	FWS	FWS	FWS
10	EAST UTTAR PRADESH	ISOL	SCT	FWS	FWS	WS	WS	WS
11	WEST UTTAR PRADESH	SCT	FWS	FWS	FWS	FWS	FWS	FWS
12	UTTARAKHAND	WS	WS	WS	FWS	FWS	FWS	FWS
13	HARYANA, CHANDIGARH & DELHI	WS	FWS	FWS	WS	WS	WS	FWS
14	PUNJAB	WS	WS	FWS	FWS	WS	WS	FWS
15	HIMACHAL PRADESH	WS	WS	WS	FWS	FWS	FWS	FWS
16	JAMMU AND KASHMIR AND LADAKH	WS	WS	WS	SCT	SCT	SCT	SCT
17	WEST RAJASTHAN	SCT	SCT	FWS	FWS	FWS	SCT	ISOL
18	EAST RAJASTHAN	FWS	FWS	FWS	FWS	FWS	SCT	SCT
19	WEST MADHYA PRADESH	WS	WS	WS	WS	WS	FWS	FWS
20	EAST MADHYA PRADESH	WS	WS	WS	WS	WS	WS	WS
21	GUJRAT REGION	WS	WS	WS	WS	WS	WS	WS
22	SAURASHTRA & KUTCH	WS	WS	WS	WS	WS	WS	WS
23	KONKAN & GOA	WS	WS	WS	WS	WS	WS	WS
24	MADHYA MAHARASHTRA	FWS	SCT	SCT	SCT	FWS	FWS	FWS
25	MARATHWADA	ISOL	ISOL	ISOL	ISOL	ISOL	ISOL	ISOL
26	VIDARBHA	WS	WS	FWS	FWS	FWS	SCT	WS
27	CHHATTISGARH	WS	WS	WS	WS	WS	FWS	FWS
28	COASTAL ANDHRA PRADESH	WS	FWS	SCT	SCT	SCT	SCT	SCT
29	TELANGANA	SCT	SCT	ISOL	ISOL	ISOL	ISOL	ISOL
30	RAYALASEEMA	SCT	ISOL	ISOL	ISOL	ISOL	ISOL	ISOL
31	TAMILNADU & PUDUCHERRY	ISOL	SCT	SCT	SCT	ISOL	ISOL	ISOL
32	COSTAL KARNATAKA	WS	WS	WS	WS	WS	WS	WS
33	NORTH INTERIOR KARNATAKA	FWS	FWS	SCT	SCT	SCT	ISOL	ISOL
34	SOUTH INTERIOR KARNATAKA	FWS	FWS	SCT	SCT	SCT	ISOL	ISOL
35	KERALA AND MAHE	WS	WS	WS	WS	FWS	FWS	SCT
36	LAKSHADWEEP	WS	WS	WS	WS	FWS	FWS	SCT

- As the lead period increases forecast accuracy decreases.





- Action may be taken based on ORANGE AND REDCOLOUR warnings.
- Vulnerable regions likely urban and hilly areas action may be initiated for heavy rainfall warning.
- As the lead period increases forecast accuracy decreases.

Detailed districtwise Multi Hazard weather warning for next five days available at  
<https://mausam.imd.gov.in/responsive/districtWiseWarningGIS.php>



## Weather forecast over Delhi/NCR during 25<sup>th</sup> to 28<sup>th</sup> June 2025

### Past Weather:

There has been rise in the minimum up to 1°C and fall in maximum temperature up to 1°C over Delhi/NCR during the past 24 hours. The maximum and minimum temperatures over Delhi were around 34 to 36 °C and 25 to 29°C, respectively. The minimum temperatures were near normal and the maximum temperatures were below normal up to 2 to 6°C. Partly cloudy sky conditions with predominant surface wind from the east direction with wind speeds up to 16 kmph prevailed during the past 24 hours. Generally cloudy sky conditions with wind speed less than 16 kmph from the east direction prevailed over the region in the forenoon today.

### Weather Forecast:

**25.06.2025:** Generally cloudy sky. Light to Moderate rain/thunderstorm/lightning accompanied with gusty winds 30 - 40 kmph. The maximum temperatures over Delhi are likely to be in the range of 33 to 35°C. The maximum temperature will be below normal by up to 2 - 4°C. The predominant surface wind will likely be from the southeast direction with a wind speed of less than 20 kmph in the afternoon. The wind speed will gradually increase becoming 20-25 kmph from the southeast direction during evening and night.

**26.06.2025:** Generally cloudy sky. Very light to light rain/thunderstorm/lightning accompanied with gusty winds 30 - 40 kmph. The maximum and minimum temperatures over Delhi are likely to be in the range of 33 to 35°C and 26 to 28°C respectively. The minimum temperature will be below normal up to 1 to 2 °C and the maximum temperature will be below normal up to 2 to 4°C. The predominant surface wind will likely be from the southeast direction with a wind speed of less than 25 kmph during the morning hours. The wind speed will gradually decrease becoming 15-20 kmph from the southeast direction in the afternoon. It will increase becoming less than 20 kmph from the southeast direction during evening and night.

**27.06.2025:** Generally cloudy sky. Very light to light rain accompanied with thunderstorm/lightning. The maximum and minimum temperatures over Delhi are likely to be in the range of 33 to 35°C and 26 to 28°C, respectively. The minimum temperature will be below normal up to 1 to 2°C, and the maximum temperature will be below normal up to 2 to 4°C. The predominant surface wind will likely be from the east direction with a wind speed of less than 15 kmph during the morning hours. The wind speed will gradually increase becoming less than 20 kmph from the southeast direction in the afternoon. It will decrease to less than 10 kmph from the northeast direction during the evening and night.

**28.06.2025:** Generally cloudy sky. Very light to light rain accompanied with thunderstorm/lightning. The maximum and minimum temperatures over Delhi are likely to be in the range of 32 to 34°C and 25 to 27°C, respectively. The minimum temperature will be below normal up to 1 to 3 °C, and the maximum temperature will be below normal up to 3 to 5°C. The predominant surface wind will likely be from the northwest direction with a wind speed of less than 10 kmph during the morning hours. The wind speed will gradually increase becoming less than 15 kmph from the northwest direction in the afternoon. It will decrease to less than 12 kmph from the northwest direction during the evening and night.

### Impact expected and Action Suggested due to thunderstorm with lightning/gusty winds:

- Be cautious and take precautionary measures, though there is the likelihood of thunderstorm/lightning and gusty winds (speed 40 – 50 kmph) temporarily reaching 60 kmph during thunderstorm with dust rising surface winds.
- Breaking of tree branches, uprooting of large avenue trees, Large dead limbs blown from trees, Damage to standing crops, Minor to major damage to power and communication lines due to breaking of branches, Partial damage to vulnerable structures due to strong winds, Loose objects may fly.
- People are advised to keep a watch on the weather for worsening conditions and be ready to move to safer places accordingly, stay indoors, close windows & doors and avoid travel if possible, take safe shelters; do not take shelter under trees, do not lie on concrete floors and do not lean against concrete walls, unplug electrical/ electronic appliances, immediately get out of water bodies, keep away from all the objects that conduct electricity.



**Impact & Action Suggested due to extremely heavy falls/ very heavy rainfall:**

- ✓ **Extremely heavy rainfall (>20 cm/24 hours) likely at isolated places over Gujarat Region and Odisha on 25<sup>th</sup> June.**
- ✓ **Very heavy rainfall** at isolated places likely over Konkan & Goa, ghat areas of Madhya Maharashtra, Gujarat region during 25<sup>th</sup> June-01<sup>st</sup> July; over East Rajasthan during 25<sup>th</sup>-28<sup>th</sup>; Uttarakhand during 25<sup>th</sup>-27<sup>th</sup>, Haryana, Himachal Pradesh, Interior Karnataka on 25<sup>th</sup>; West Rajasthan on 27<sup>th</sup>; Punjab, Madhya Pradesh, ghat areas of Tamil Nadu, Coastal Karnataka and Kerala on 25<sup>th</sup> & 26<sup>th</sup>, West Uttar Pradesh on 25<sup>th</sup> June & 01<sup>st</sup> July 27<sup>th</sup>; Jammu-Kashmir on 25<sup>th</sup> June and East Uttar Pradesh on 30<sup>th</sup> June & 01<sup>st</sup> July; Sub-Himalayan West Bengal & Sikkim on 28<sup>th</sup>; Bihar on 28<sup>th</sup> & 29<sup>th</sup>; Jharkhand, Odisha on 26<sup>th</sup> June

**Impact Expected**

- Localized Flooding of roads, water logging in low lying areas and closure of underpasses mainly in urban areas of the above region.
- Occasional reduction in visibility due to heavy rainfall.
- Disruption of traffic in major cities due to water logging in roads leading to increased travel time.
- Minor damage to kutcha roads.
- Possibilities of damage to vulnerable structure.
- Localized Landslides/Mudslides/landslips/mudslips/landsinks/mudsinks.
- Damage to horticulture and standing crops in some areas due to inundation.
- It may lead to riverine flooding in some river catchments (for riverine flooding please visit Web page of CWC)

**Action Suggested**

- Check for traffic congestion on your route before leaving for your destination.
- Follow any traffic advisories that are issued in this regard.
- Avoid going to areas that face the water logging problems often.
- Avoid staying in vulnerable structure.

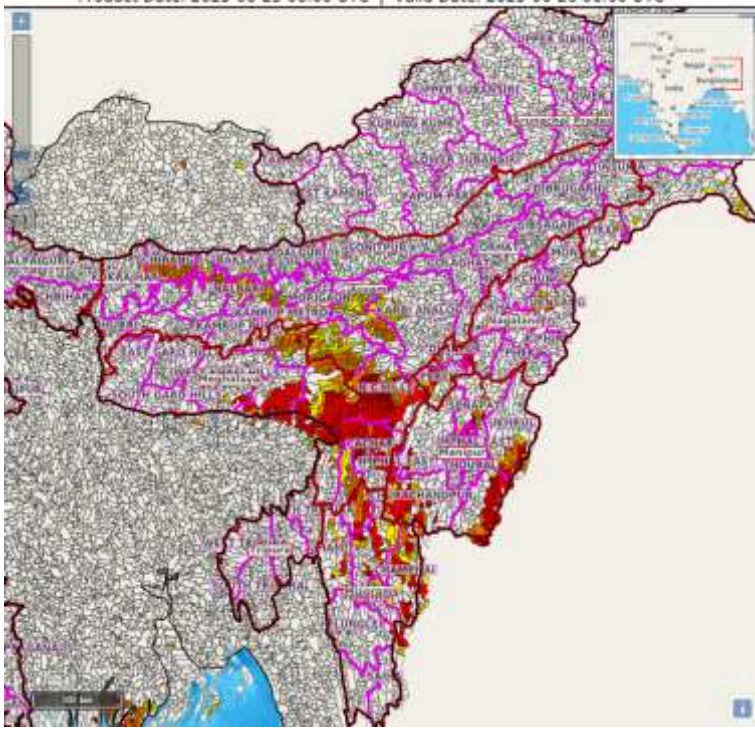
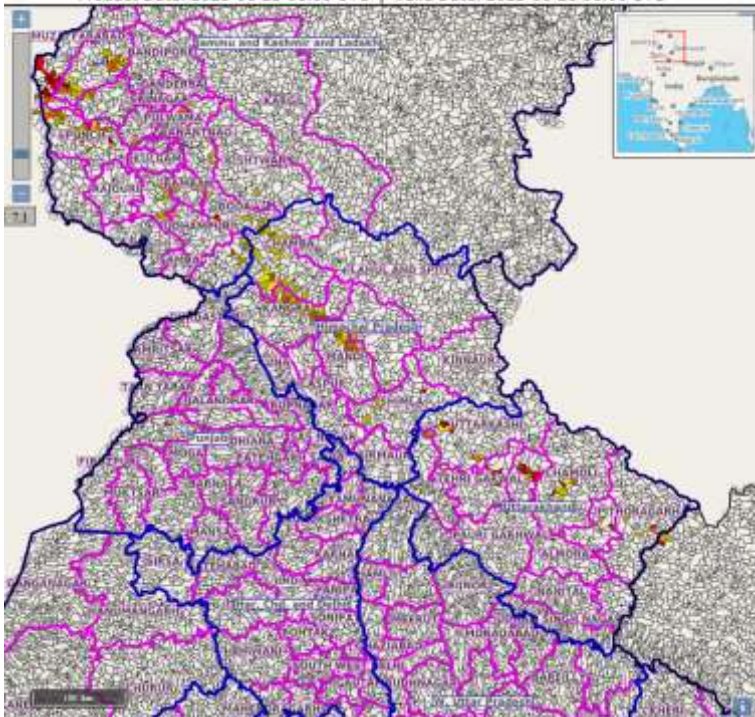
**Agromet advisories for likely impact of Heavy / Heavy to Very Heavy / Extremely Heavy Rainfall  
(Based on the IBF and advisories issued by different AMFUs)**

- In **Gujarat**, postpone nursery sowing of rice. Ensure proper drainage facilities in already sown rice nurseries, sugarcane fields, banana and mango plantations to prevent waterlogging. Provide support to sugarcane and banana to prevent lodging. In **Saurashtra & Kutch**, Drain out excess rain water from vegetable nurseries and horticultural plantations.
- In **West Madhya Pradesh**, Postpone harvesting of maize. Postpone sowing of pearl millet, soybean, pigeon pea and paddy nurseries. Make necessary arrangements to drain out excess water from vegetables and orchards to avoid waterlogging. In **Kymore Plateau and Satpura Hill Zone** of **East Madhya Pradesh**, harvest matured green gram and black gram crop and store in a safe place. In **Gird Zone** of **West Madhya Pradesh**, harvest matured maize crop and keep it in safe place. Postpone sowing of soybean and transplanting of chilli, tomato, brinjal etc. and ensure proper drainage in already sown / transplanted fields.
- In **East Rajasthan**, harvest the matured vegetables such as okra and cucurbits and store them in safe place. Make arrangement for draining out excess water from the fields of groundnut and green gram.
- In **Uttarakhand**, make proper drainage channels in rice nurseries, pigeon pea, groundnut, maize, soybean, barnyard millet and finger millet to avoid waterlogging. In **Bhabar and Tarai Zone** of **Uttarakhand**, harvest matured spring maize crop and vegetables (pumpkin, tomato, okra, chilli, French bean etc.) and store in safe place during clear weather.
- In **Sub-Montane and Low Hills Sub-Tropical Zone** of **Himachal Pradesh**, provide drainage in maize and vegetable fields. Strengthen the support for creepers and tall vegetable crops (tomato, capsicum etc.). In **Mid Hills Sub-Humid Zone** of **Himachal Pradesh**, harvest matured fruits of plum, pear and stonefruit to minimize losses due to heavy rains. Make proper drainage channels in the fields of maize, apple, pear, pomegranate, kiwi, cucumber and tomato to avoid waterlogging. Provide support to cucumber vines and tomato plants to prevent lodging.
- In **Punjab**, drain out excess water from already sown cotton, rice, vegetables and fruit crops.
- In **Haryana** - Make necessary arrangements to drain out excess water from cotton and pearl millet fields.
- In **Jammu and Kashmir** - In **Intermediate Zone**, postpone sowing of maize. Drain out excess water from the fields of maize and vegetables. In **Sub Tropical Zone**, drain out excess water from maize fields.
- In **Sub-Himalayan West Bengal**, maintain proper drainage channels in rice nurseries and fields of jute and ginger to avoid water stagnation.
- In **Jharkhand**, make necessary arrangements to drain out excess water from already sown maize fields, rice and vegetable nurseries.
- In **Odisha**, ensure proper drainage from already sown rice nurseries, fields of maize and vegetables to prevent waterlogging. Cover rice and vegetable nurseries with plastic sheets to prevent washing away of seeds.
- In **Chhattisgarh**, ensure proper drainage in rice nurseries.
- In **Konkan & Goa** make arrangement to drain out excess water from rice nurseries, fields of finger millet, groundnut and orchards to prevent waterlogging. In **ghat areas of Madhya Maharashtra**, drain out excess water from rice nurseries, vegetables and orchards to prevent waterlogging.
- In **Coastal Karnataka**, ensure proper drainage facilities in rice nurseries, banana, coconut and arecanut plantations to prevent water logging. In **South Interior Karnataka**, cover young seedlings of rice with plastic sheets or agro-shade nets to protect them from heavy rains. Provide adequate drainage to remove excess water from rice nurseries, coffee, cardamom, coconut and arecanut plantations to prevent water logging. Provide support to sugarcane and banana to prevent lodging. In **North Interior Karnataka**, drain out excess water from the crops which are at seedling stage to prevent water logging.
- In **Kerala**, ensure proper drainage facilities in rice nurseries, transplanted rice fields, coconut and banana plantations to prevent water logging. Undertake propping in banana to protect the plants from heavy rains.
- In **Assam**, keep the harvested produce of sesame, foxtail millet, *Boro* rice, banana and citrus at safer places. Ensure proper drainage in *Sali* rice nursery, maize and sugarcane fields, arecanut and coconut plantations to prevent waterlogging. In **Barak Valley Zone** of **Assam**, postpone nursery sowing of *Sali* rice.
- In **Meghalaya**, postpone nursery sowing of rice especially in valleys. Ensure proper drainage in the fields of maize, ginger, French bean, cowpea, vegetables and around rice nurseries to prevent waterlogging. Provide strong bamboo stakes or trellis support to cow pea, cucumber and bottle gourd to prevent vines from trailing on wet ground. Provide support to banana plant to prevent lodging.
- In **Arunachal Pradesh**, keep the harvested produce of soybean and vegetables such as chilli and okra at a safer place. Ensure proper drainage in rice nurseries, kiwi and apple orchards to avoid waterlogging.
- In **Nagaland**, avoid transplanting of TRC/WRC rice. Postpone sowing of soybean. Provide proper staking to vine type plants.

**Livestock / Fishery**

- Keep the animals inside the shed during heavy rainfall and provide them balanced feed.
- Store feed and fodder in a safe place to prevent spoilage.
- Construct an outlet with proper netting around the ponds to drain out excess water, thereby preventing fish from escaping in case of overflow.

## Flash flood guidance:

<p>24 hours Outlook for the Flash Flood Risk (FFR) till 1130 IST of 26-06-2025 :</p> <p>Low to Moderate flash flood risk likely over few watersheds &amp; neighbourhoods of following Met Sub-divisions during next 24 hours.</p> <p>Assam &amp; Meghalya - West Khasi Hills, East Khasi Hills, Karimganj, N C Hills, Jantia Hills, RI Bhoi, Nagaon, Karbi Analog, Nalbari, Chirang, Kamrup Rural, Cachar districts.</p> <p>Nagaland Mizoram Manipur Tripura ( NMMT) –</p> <p>Nagaland- Peren, Dimapur, Kiphire, Kohima, Mon, Peren, Phek, Mokochung, Tuensang and Zunheboto districts.</p> <p>Manipur- Bishnupur, Chandel, Churachandpur, Imphal West, Imphal East, Senapati, Tamenglong, Ukhrul,</p> <p>Mizoram- Aizawl, Champhai, Lunglei, Lawngtlai, Kolasib, Saiha, Serchhip,</p> <p>Surface runoff/ Inundation may occur at some fully saturated soils &amp; low-lying areas over Area of Concern (AoC) as shown in map due to expected rainfall occurrence in next 24 hours.</p>	<p>Product: WRF FFR   Timescale: 24-hr   Region: "REGIONAL"</p> <p>Product Date: 2025-06-25 06:00 UTC   Valid Date: 2025-06-26 06:00 UTC</p> 
<p>24 hours Outlook for the Flash Flood Risk (FFR) till 1130 IST of 26-06-2025 :</p> <p>Low to Moderate flash flood risk likely over few watersheds &amp; neighbourhoods of following Met Sub-divisions during next 24 hours.</p> <p>Jammu &amp; Kashmir – Udhampur, Punch, Doda, Ramban, Rajouri, Kupwara, Jammu districts</p> <p>Himachal Pradesh- Chamba, Mandi, Kangra, Shimla and Sirmour districts</p> <p>Uttarakhand - Bageshwar, Chamoli, Dehradun, Pauri Garhwal, Pithoragarh and Tehri Garwal, Rudraprayag, districts.</p> <p>Surface runoff/ Inundation may occur at some fully saturated soils &amp; low-lying areas over Area of Concern (AoC) as shown in map due to expected rainfall occurrence in next 24 hours.</p>	<p>Product: WRF FFR   Timescale: 24-hr   Region: "REGIONAL"</p> <p>Product Date: 2025-06-25 06:00 UTC   Valid Date: 2025-06-26 06:00 UTC</p> 



### Legends & abbreviations:

- ❖ **Heavy Rain:**64.5-115.5mm; **Very Heavy Rain:**115.6-204.4mm; **Extremely Heavy Rain:** >204.4mm.
- ❖ **Obsy:** Observatory; Automatic Weather Station; **ARG:** Automatic Rain Gauge; **dist:** District; **NH:** National Highway; **KVK:** Krishi Vigyan Kendra; **DVC:** Damodar Valley Corporation; **PTO:** Part Time Office, **Aero:** Aerodrome, **IAF:** Indian Air Force.
- ❖ **Region wise classification of meteorological Sub-Divisions:**
  - **Northwest India:** Western Himalayan Region (Jammu-Kashmir-Ladakh-Gilgit-Baltistan-Muzaffarabad, Himachal Pradesh and Uttarakhand); Punjab, Haryana-Chandigarh-Delhi; West Uttar Pradesh, East Uttar Pradesh, West Rajasthan and East Rajasthan.
  - **Central India:** West Madhya Pradesh, East Madhya Pradesh, Vidarbha and Chhattisgarh.
  - **East India:** Bihar, Jharkhand, Sub-Himalayan West Bengal & Sikkim; Gangetic West Bengal, Odisha and Andaman & Nicobar Islands.
  - **Northeast India:** Arunachal Pradesh, Assam & Meghalaya and Nagaland, Manipur, Mizoram & Tripura.
  - **West India:** Gujarat Region, Saurashtra & Kutch, Konkan & Goa, Madhya Maharashtra and Marathawada.
  - **South India:** Coastal Andhra Pradesh & Yanam, Telangana, Rayalaseema, Coastal Karnataka, North Interior Karnataka, South Interior Karnataka, Kerala & Mahe, Tamil Nadu, Puducherry & Karaikal and Lakshadweep.

## LEGENDS

1. अंडमान और निकोबार द्वीपसमूह

2. अरुणाचल प्रदेश

3. असम और मेघालय

4. नागालैंड, मणिपुर, मिजोरम और त्रिपुरा

5. उप-हिमालयी पश्चिम बंगाल और सिक्किम

6. गंगीय पश्चिम बंगाल

7. ओडिशा

8. झारखंड

9. बिहार

10. पूर्वी उत्तर प्रदेश

11. पश्चिम उत्तर प्रदेश

12. उत्तराखंड

13. हरियाणा, चंडीगढ़ और दिल्ली

14. पंजाब

15. हिमाचल प्रदेश

16. जम्मू और कश्मीर और लद्दाख

17. पश्चिम राजस्थान

18. पूर्वी राजस्थान

19. पश्चिम मध्य प्रदेश

20. पूर्वी मध्य प्रदेश

21. गुजरात

22. सौराष्ट्र

23. कोंकण और गोवा

24. मध्य महाराष्ट्र

25. मराठवाड़ा

26. विदर्भ

27. छत्तीसगढ़

28. तटीय आंध्र प्रदेश और यनम

29. तेलंगाना

30. रायलसीमा

31. तमिलनाडु, पुडुचेरी और कराईकल

32. तटीय कर्नाटक

33. आंतरिक उत्तरी कर्नाटक

34. आंतरिक दक्षिणी कर्नाटक

35. केरल और माहे

36. लक्षद्वीप



1. Andaman & Nicobar Islands

2. Arunachal Pradesh

3. Assam & Meghalaya

4. Nagaland, Manipur, Mizoram & Tripura

5. Sub-Himalayan West Bengal & Sikkim

6. Gangetic West Bengal

7. Odisha

8. Jharkhand

9. Bihar

10. East Uttar Pradesh

11. West Uttar Pradesh

12. Uttarakhand

13. Haryana, Chandigarh & Delhi

14. Punjab

15. Himachal Pradesh

16. Jammu & Kashmir and Ladakh

17. West Rajasthan

18. East Rajasthan

19. West Madhya Pradesh

20. East Madhya Pradesh

21. Gujarat

22. Saurashtra

23. Konkan & Goa

24. Madhya Maharashtra

25. Marathwada

26. Vidarbha

27. Chhattisgarh

28. Coastal Andhra Pradesh & Yanam

29. Telangana

30. Rayalaseema

31. Tamilnadu, Puducherry & Karaikal

32. Coastal Karnataka

33. North Interior Karnataka

34. South Interior Karnataka

35. Kerala & Mahe

36. Lakshadweep

## SPATIAL DISTRIBUTION (% of Stations reporting)

% Stations	Category	% Stations	Category
76-100	Widespread (WS/Most Places)	26-50	Scattered (SCT/A Few Places)
51-75	Fairly Widespread (FWS/Many Places)	1-25	Isolated (ISOL)



Fog



Heavy Snow



Cold Wave



Heavy Rain



Dust Storm



Cold Day



Very Heavy Rain



Heat Wave



Ground Frost



Extremely Heavy Rain



Warm Night



Thunder & Lightning



Hot Day



Hailstorm



Hot & Humid



Dust Raising Winds



Strong Surface Winds

### COLOUR CODED WARNING

No Warning (No Action)

Watch (Be Aware)

Alert (Be Prepared To Take Action)

Warning (Take Action)

### Probabilistic Forecast

Terms	Probability of Occurrence (%)
Unlikely	< 25
Likely	25 - 50
Very Likely	50 - 75
Most Likely	> 75

\* Red colour warning does not mean "Red Alert", Red colour warning means "Take Action".

Forecast and Warning for any day is valid from 0830 hours IST of day till 0830 hours IST of next day.

For more details, kindly visit <https://mausam.imd.gov.in> or contact: 011-2434-4599

(Service to the Nation since 1875)



### DEFINITION/CRITERIA

#### Rain/ Snow \*

Heavy: 64.5 to 115.5 mm/cm \*  
Very Heavy: 115.6 to 204.4 mm/cm \*  
Extremely Heavy: > 204.4 mm/cm \*

#### Heat Wave

When maximum temperature of a station reaches  $\geq 40^{\circ}\text{C}$  for plains and  $\geq 30^{\circ}\text{C}$  for hilly regions  
(a) Based on Departure from normal

Heat Wave: Maximum Temperature Departure from normal  $4.5^{\circ}\text{C}$  to  $6.4^{\circ}\text{C}$ .

Severe Heat Wave: Maximum Temperature Departure from normal  $\geq 6.5^{\circ}\text{C}$

(b). Based on Actual maximum temperature

Heat Wave: When actual maximum temperature  $\geq 45^{\circ}\text{C}$ .

Severe Heat Wave: When actual maximum temperature  $\geq 47^{\circ}\text{C}$ .

(c). Criteria for heat wave for coastal stations

When maximum temperature departure is  $> 4.5^{\circ}\text{C}$  from normal. Heat Wave may be described provided maximum temperature  $\geq 37^{\circ}\text{C}$ .

#### Warm Night

When maximum temperature remains  $40^{\circ}\text{C}$

Warm Night: When minimum temperature departure  $4.5^{\circ}\text{C}$  to  $6.4^{\circ}\text{C}$ .

Severe Warm Night: When minimum temperature departure  $> 6.4^{\circ}\text{C}$ .

#### Cold Wave

When minimum temperature of a station  $\leq 10^{\circ}\text{C}$  for plains and  $\leq 0^{\circ}\text{C}$  for hilly regions.

(a). Based on departure

Cold Wave: Minimum Temperature Departure from normal  $-4.5^{\circ}\text{C}$  to  $-6.4^{\circ}\text{C}$ .

Severe Cold Wave: Minimum Temperature Departure from normal  $\leq -6.5^{\circ}\text{C}$

(b) Based on actual Minimum Temperature (for Plains only)

Cold Wave: When Minimum Temperature is  $\leq 4.0^{\circ}\text{C}$

Severe Cold Wave: When Minimum Temperature is  $\leq 2.0^{\circ}\text{C}$

(c) For Coastal Stations

When Minimum Temperature departure is  $\leq -4.5^{\circ}\text{C}$  & actual Minimum Temperature is  $\leq 15^{\circ}\text{C}$

#### Cold Day

When minimum temperature of a station  $\leq 10^{\circ}\text{C}$  for plains and  $\leq 0^{\circ}\text{C}$  for hilly regions

Based on departure

Cold Day: Maximum Temperature Departure from normal  $-4.5^{\circ}\text{C}$  to  $-6.4^{\circ}\text{C}$ .

Severe Cold Day: Maximum Temperature Departure from normal  $\leq -6.5^{\circ}\text{C}$

#### Fog

Phenomenon of small droplets suspended in air and the horizontal visibility  $< 1\text{km}$

Moderate Fog: When the visibility between 500-200 metres

Dense Fog: when the visibility between 50- 200 metres

Very Dense Fog: when the visibility  $< 50$  metres

#### Thunderstorm

Sudden electrical discharges manifested by a flash of light (Lightning) and a sharp rumbling sound (thunder)

#### Dust/Sand Storm

An ensemble of particles of dust or sand energetically lifted to great heights by a strong and turbulent wind.

#### Frost

Ice deposits on ground

Air temperature  $\leq 4^{\circ}\text{C}$  ( over Plains)

#### Squall

A strong wind that rises suddenly, lasts for atleast 1 minute.

Moderate: Wind speed 52-61 kmph

Severe: Wind speed 62-67 kmph

Very Severe: Wind speed  $> 67$  kmph

#### Sea State

Effect of various waves in the sea over specific area

Rough to very rough: Wind speed 41-62 kmph (22-33 knots) & Wave height 2.5-6 metre

High to very high: Wind speed 63-117 kmph ( 34-63 knots) & Wave height 6-14 metre

Phenomenal: Wind speed  $> 117$  kmph ( $> 63$  knots) & Wave height  $> 14$  metre

#### Cyclone

Cyclonic Storm: Wind speed 62-87 kmph (34-47 knots)

Severe Cyclonic Storm: Wind speed 88-117 kmph (48-63 knots)

Very Severe Cyclonic Storm: Wind speed 118-165 kmph (64 - 89 knots)

Extremely Severe Cyclonic Storm: Wind speed 166-220 kmph (90 -119 knots)

Super Cyclone Storm: Wind speed  $> 220$  kmph ( $> 119$  knots)

\* Red colour warning does not mean "Red Alert", Red colour warning means "Take Action".

Forecast and Warning for any day is valid from 0830 hours IST of day till 0830 hours IST of next day.

For more details, kindly visit <https://mausam.imd.gov.in> or contact: 011-2434-4599

(Service to the Nation since 1875)

**Hot and Humid:** When maximum temperatures remain  $3^{\circ}\text{C}$  above normal along with the above normal relative humidity.