



India Meteorological Department
(Ministry of Earth Sciences)

NATIONAL BULLETIN NO. 27 (BOB/01/2024)

TIME OF ISSUE: 0130 HOURS IST DATED: 28.05.2024
FROM: INDIA METEOROLOGICAL DEPARTMENT (FAX NO. 24643965/24699216/24623220)

TO: CONTROL ROOM, NDM, MINISTRY OF HOME AFFAIRS (FAX.NO. 23093750)
CONTROL ROOM NDMA (FAX.NO. 26701729)
CABINET SECRETARIAT (FAX.NO.23012284, 23018638)
PS TO HON'BLE MINISTER FOR S & T AND EARTH SCIENCES (FAX NO.23316745)
SECRETARY, MOES (FAX NO. 24629777)
H.Q. (INTEGRATED DEFENCE STAFF AND CDS) (FAX NO. 23005137/23005147)
DIRECTOR GENERAL, DOORDARSHAN (23385843)
DIRECTOR GENERAL, AIR (23421105, 23421219)
PIB MOES (FAX NO. 23389042)
UNI (FAX NO. 23355841)
D.G. NATIONAL DISASTER RESPONSE FORCE (NDRF) (FAX NO. 26105912, 2436 3260)
DIRECTOR, PUNCTUALITY, INDIAN RAILWAYS (FAX NO. 23388503)
CHIEF SECRETARY, ANDAMAN & NICOBAR ISLANDS (FAX NO. 03192- 232656)
CHIEF SECRETARY, GOVT. WEST BENGAL (FAX NO. 033-22144328)
CHIEF SECRETARY, GOVT. OF ODISHA (FAX NO. 0674 -2536660)
CHIEF SECRETARY, GOVT. OF ANDHRA PRADESH (FAX NO. 0863-2441029, 08645-246600)
CHIEF SECRETARY, GOVT. OF TAMIL NADU (FAX NO. 044-25672304)
CHIEF SECRETARY, GOVT. OF PUDUCHERRY (FAX NO. 0413-2337575, 2334145)
CHIEF SECRETARY, GOVT. OF TRIPURA (FAX NO. 0381-2414013, 2413200)
CHIEF SECRETARY, GOVT. OF MIZORAM (FAX NO. 0389-2322745, 2320588)
CHIEF SECRETARY, GOVT. OF MANIPUR (FAX NO. 0385-2452629)
CHIEF SECRETARY, GOVT. OF NAGALAND (FAX NO. 0370-2270057)
CHIEF SECRETARY, GOVT. OF ASSAM (FAX NO. 0361-2260900)
CHIEF SECRETARY, GOVT. OF MEGHALAYA (FAX NO. 0364-2225978)

Sub: Deep Depression (remnant of Cyclonic Storm "Remal") over Bangladesh

The **Deep Depression (remnant of Cyclonic Storm "Remal")** over Bangladesh moved east-northeastwards with a speed of 15 kmph during past 06 hours, and lay centered at 2330 hrs IST of 27th May, 2024 over Bangladesh, near **latitude** 24.0 °N and longitude 90.5 °E about 190 km north-northeast of Mongla (Bangladesh), 120 km west-southwest of Srimangal (Bangladesh) and 30 km northeast of Dhaka (Bangladesh)

The system is likely to move east-northeastwards, and gradually weaken into a Depression during next 06 hours.

Forecast track and intensity are given in the following table:

Date/Time (IST)	Position (Lat. °N/ long. °E)	Maximum sustained surface wind speed (Kmph)	Category of cyclonic disturbance
27.05.24/2330	24.0/90.5	50-60 gusting to 70	Deep Depression
28.05.24/0530	24.4/91.1	40-50 gusting to 60	Depression
28.05.24/1130	24.8/91.8	25-35 gusting to 45	Well Marked Low Pressure Area

Warnings (Graphics Attached):

Heavy Rainfall Warning:

- West Bengal:** Light to moderate rainfall at most places with **heavy to very heavy rainfall** at isolated places likely over eastern districts of Sub-Himalayan West Bengal on 28th May.
- Northeastern States:** Light to moderate rainfall at most places with **heavy to very heavy rainfall** at a few places is likely over Assam, Meghalaya, Arunachal Pradesh, Nagaland, Mizoram, Manipur & Tripura on 28th May. Isolated **extremely heavy rainfall** (≥ 20 cm) is also likely over Arunachal Pradesh on 28th May.

Wind Warning:

(a) Bay of Bengal

- ❖ Squally wind speed reaching 50-60 kmph gusting to 70 kmph very likely to prevail over North Bay of Bengal till early morning of 28th and thereafter very likely to decrease and becoming 40-50 kmph gusting to 60 kmph till 28th May afternoon.

(b) Along & off Bangladesh and West Bengal coasts

- ❖ Squally wind speed reaching 40-50 kmph gusting to 60 kmph very likely to prevail till early morning of 28th May and decrease thereafter.

(c) Northeastern States

- ❖ Squally wind speed reaching 50-60 kmph gusting to 70 kmph is likely over South Assam and Meghalaya, Tripura and 40-50 kmph gusting to 60 kmph is likely over & Mizoram, Manipur and remaining parts of Assam till early morning of 28th and thereafter very likely to decrease and becoming 40-50 kmph gusting to 60 kmph over Assam, Meghalaya & Tripura till 28th May afternoon.

Sea condition warning:

(a) North Bay of Bengal, along & off Bangladesh and West Bengal coasts

Rough Sea condition very likely over North Bay of Bengal, along & off Bangladesh and West Bengal coasts till early morning of 28th May and improve thereafter.

Damage Expected over Northeastern States (Assam, Meghalaya, Manipur, Tripura, Mizoram)

- ❖ Damage to vulnerable structures and thatched houses/ huts.
- ❖ Unattached metal sheets may fly.
- ❖ Damage to banana and papaya trees.
- ❖ Damage to Kutcha and minor damage to Pucca roads due to heavy rain.
- ❖ Damage to paddy crops, horticultural crops and orchards.
- ❖ Inundation of low-lying areas and localized flooding
- ❖ Occasional reduction in visibility due to heavy rainfall.
- ❖ Disruption of traffic due to water logging and squally winds
- ❖

Action Suggested for Damage Expected over Northeastern States (Assam, Meghalaya, Manipur, Tripura, Mizoram) on 28th May:

- ❖ People in vulnerable areas to move to safer places.
- ❖ People in affected areas to remain indoors.
- ❖ Avoid going to areas that face the water logging problems often.
- ❖

The system is under continuous surveillance and the next message will be issued at 0530 hours IST of 28th May, 2024.

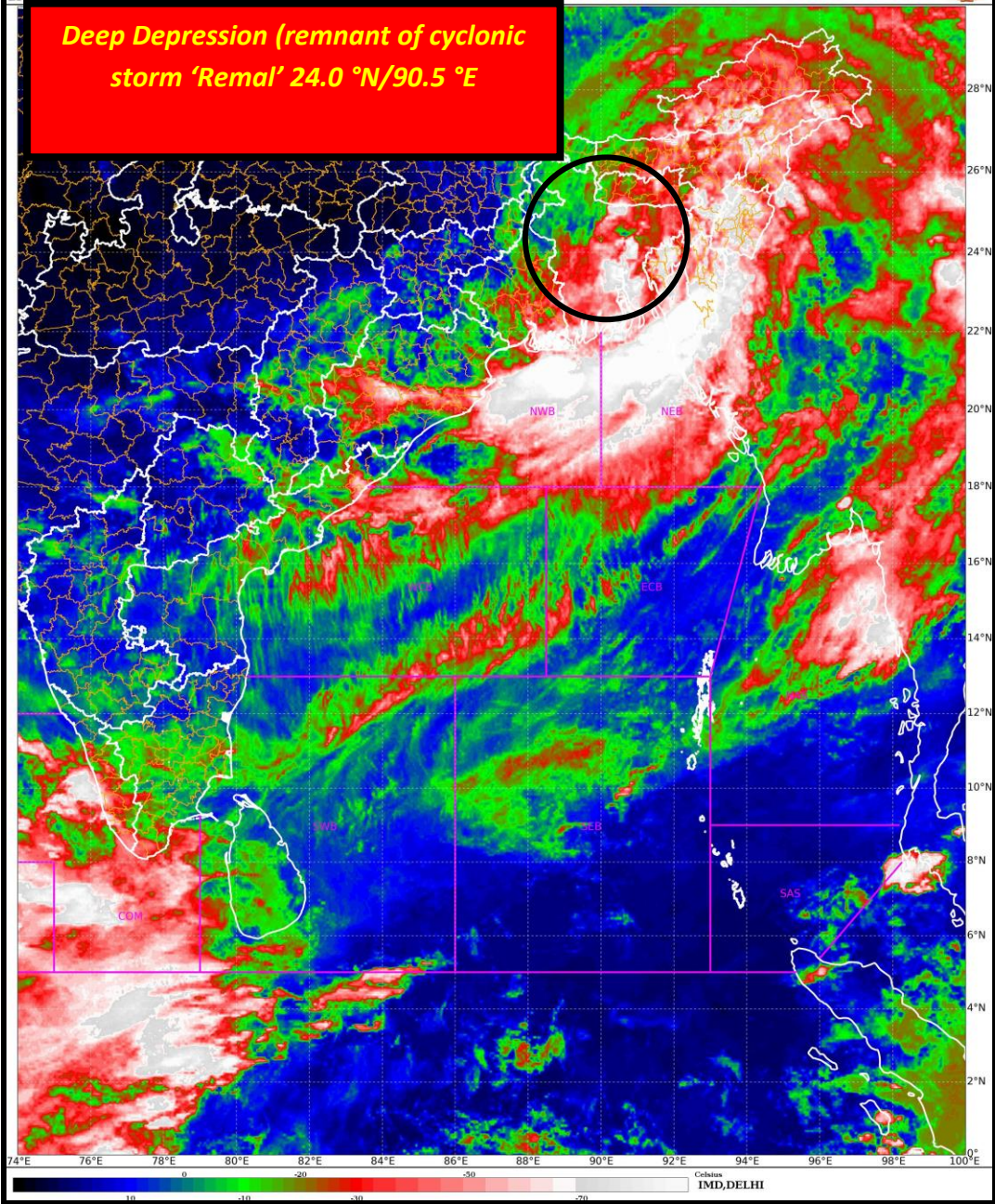
(Shobhit Katiyar)

Scientist D, Cyclone Warning Division, New Delhi

*Copy to: ACWC Kolkata/ ACWC Chennai/ CWC Bhubaneswar/CWC Visakhapatnam/MO
Port Blair/RMC Guwahati*

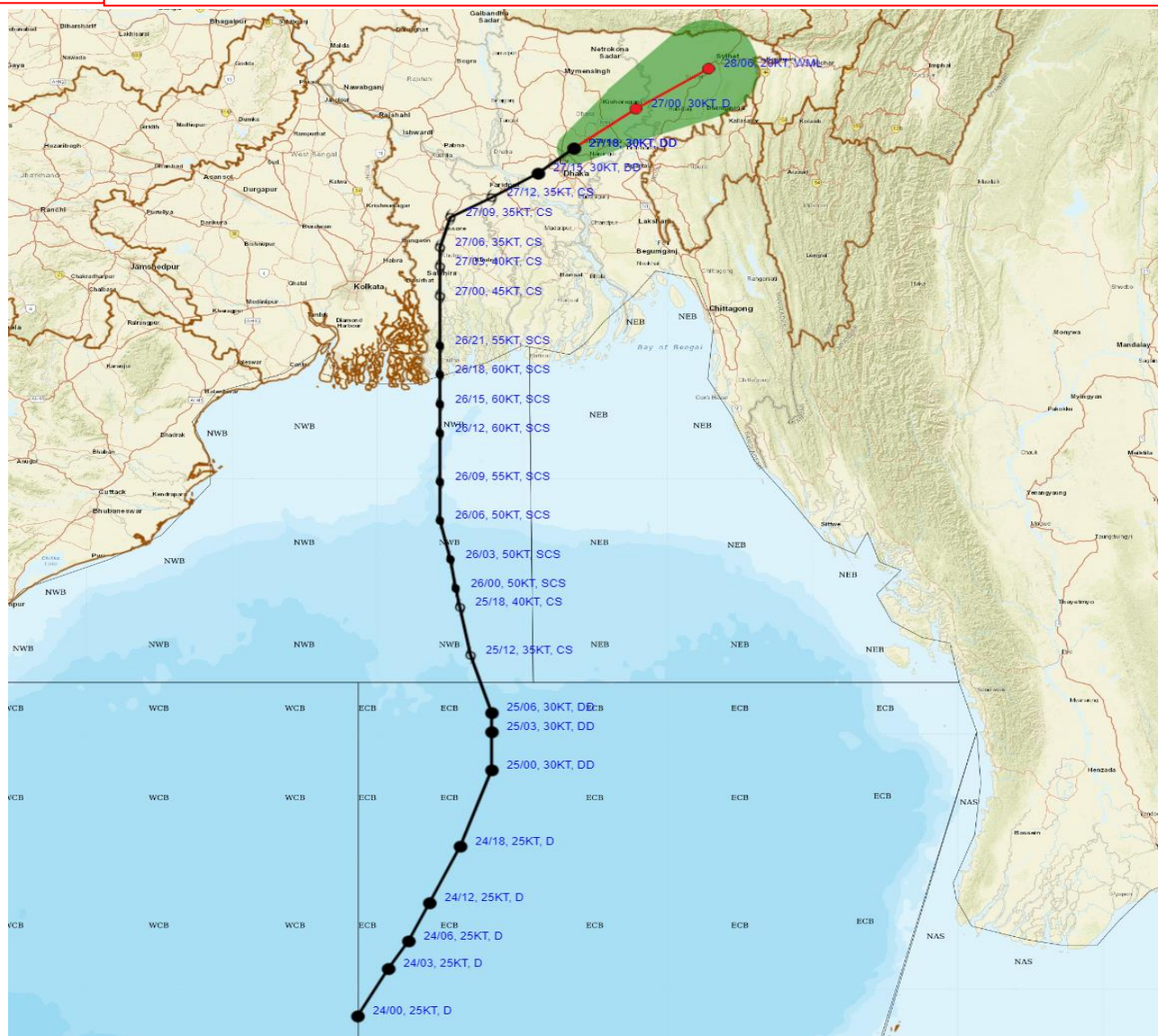


Deep Depression (remnant of cyclonic storm 'Remal' 24.0 °N/90.5 °E





FORECAST TRACK ALONGWITH CONE OF UNCERTAINTY IN ASSOCIATION WITH DEEP DEPRESSION (REMANANT OF CYCLONIC STORM 'REMAL') OVER BANGLADESH BASED ON 1800 UTC (2330 IST) OF 27TH MAY 2024.



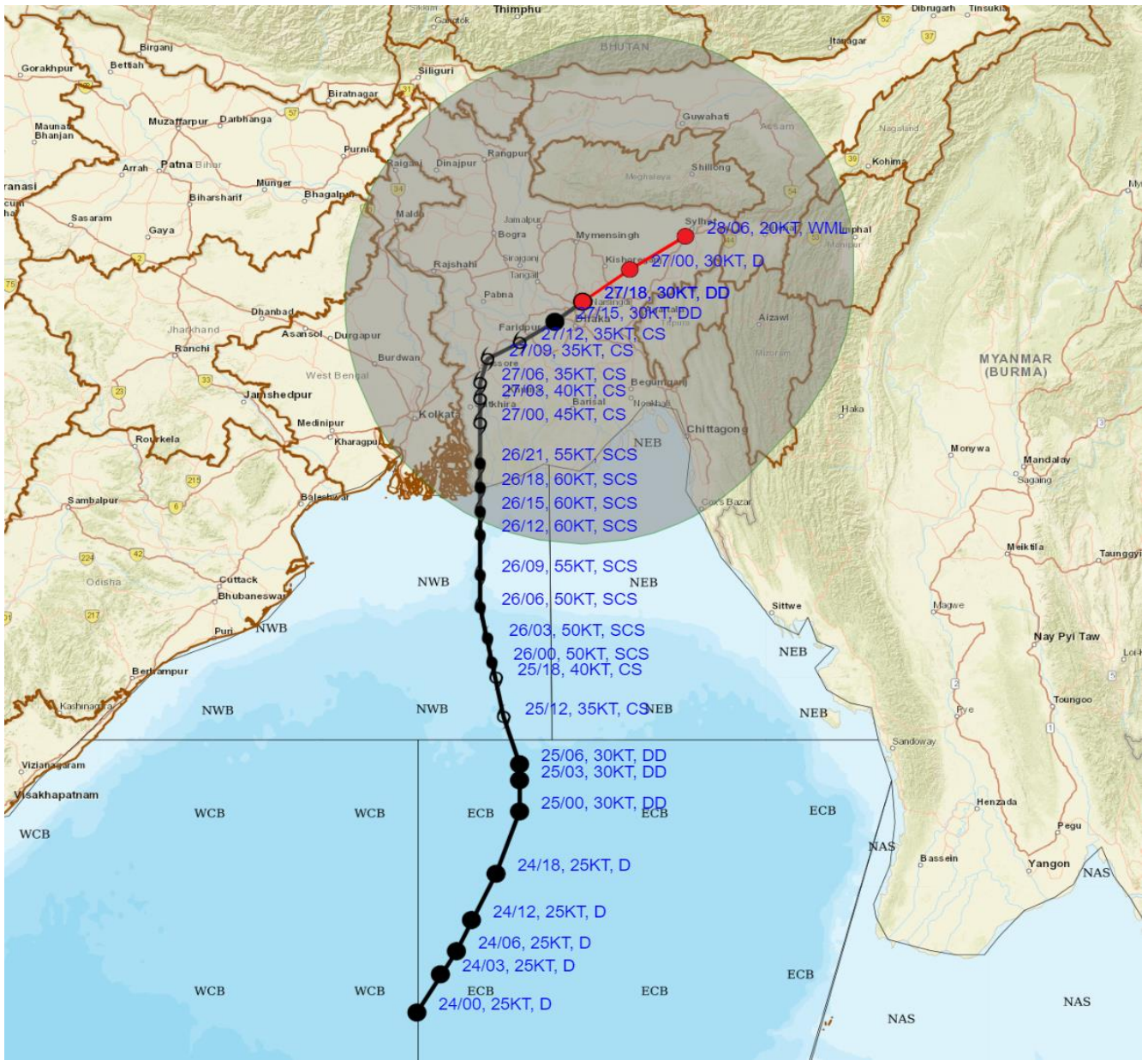
DATE/TIME IN UTC
 IST=UTC + 0530
 L: LOW PRESSURE AREA
 WML: WELL MARKED LOW PRESSURE AREA
 D: DEPRESSION (17-27 KT)
 DD: DEEP DEPRESSION (28-33 KT)
 CS: CYCLONIC STORM (34-47 KT)
 SCS: SEVERE CYCLONIC STORM (48-63KT)
 VSCS: VERY SEVERE CYCLONIC STORM (64-89 KT)
 ESCS: EXTREMELY SEVERE CYCLONIC STORM (90-119 KT)
 SuCS: SUPER CYCLONIC STORM (\geq 120 KT)

- LESS THAN 34 KT
- 34-47 KT
- \geq 48 KT
- OBSERVED TRACK
- FORECAST TRACK
- CONE OF UNCERTAINTY

Forecast Date and Time (UTC)	DISTANCE (KM) AND DIRECTION FROM STATIONS		
	SRIMANGAL	Dhaka	Mongla
27.05.24/1800	120, WSW	30, NE	190, NNE
27.05.24/0000	70, W	110, NE	260, NE
28.05.24/0600	60, N	200, NE	340, NE



FORECAST TRACK ALONGWITH QUADRANT WIND DISTRIBUTION IN ASSOCIATION WITH DEEP DEPRESSION (REMANANT OF CYCLONIC STORM 'REMA') OVER BANGLADESH BASED ON 1800 UTC (2330 IST) OF 27TH MAY 2024.



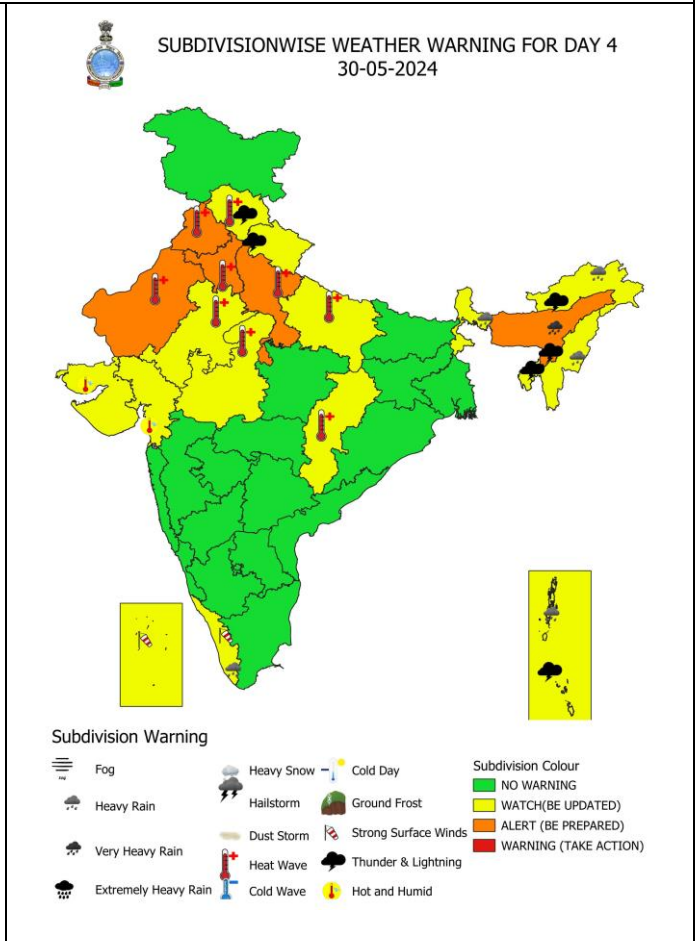
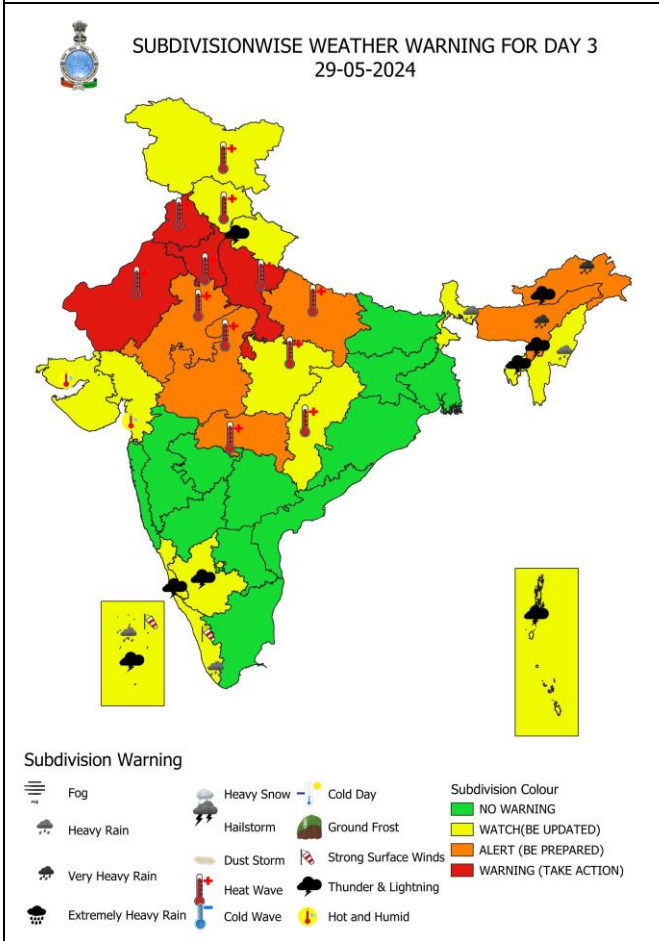
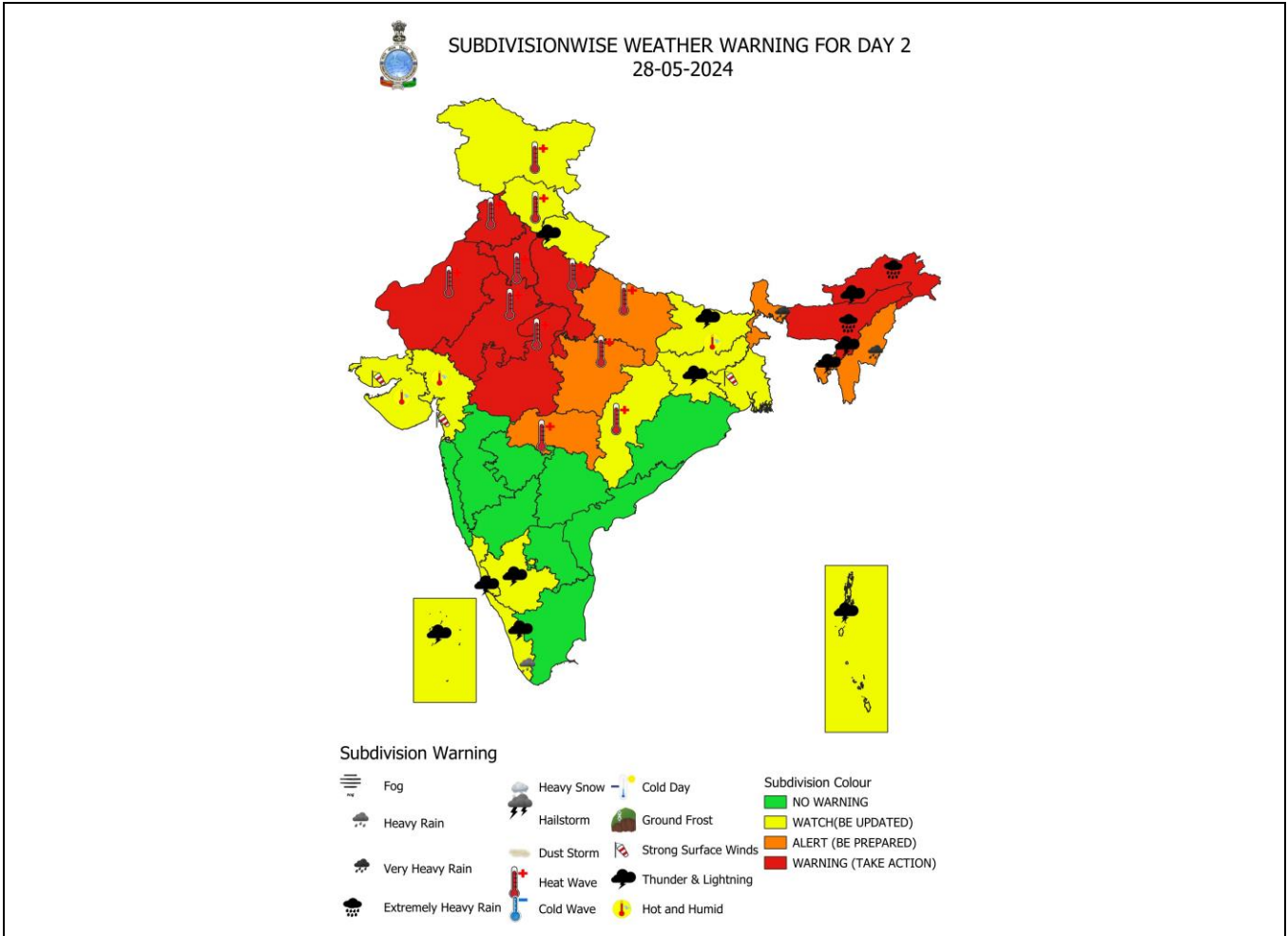
DATE/TIME IN UTC
 IST=UTC + 0530
 L: LOW PRESSURE AREA
 WML: WELL MARKED LOW PRESSURE AREA
 D: DEPRESSION (17-27 KT)
 DD: DEEP DEPRESSION (28-33 KT)
 CS: CYCLONIC STORM (34-47 KT)
 SCS: SEVERE CYCLONIC STORM (48-63KT)
 VSCS: VERY SEVERE CYCLONIC STORM (64-89 KT)
 ESCS: EXTREMELY SEVERE CYCLONIC STORM (90-119 KT)
 SuCS: SUPER CYCLONIC STORM (\geq 120 KT)

● LESS THAN 34 KT
 ○ 34-47 KT
 ● \geq 48 KT
 — OBSERVED TRACK
 — FORECAST TRACK
 — CONE OF UNCERTAINTY
 AREA OF MAXIMUM SUSTAINED WIND SPEED:
 ■ 28-33 KT (52-61 KMPH)
 ■ 34-49 KT (62-91 KMPH)
 ■ 50-63 KT (92-117 KMPH)
 ■ \geq 64 KT (\geq 118 KMPH)

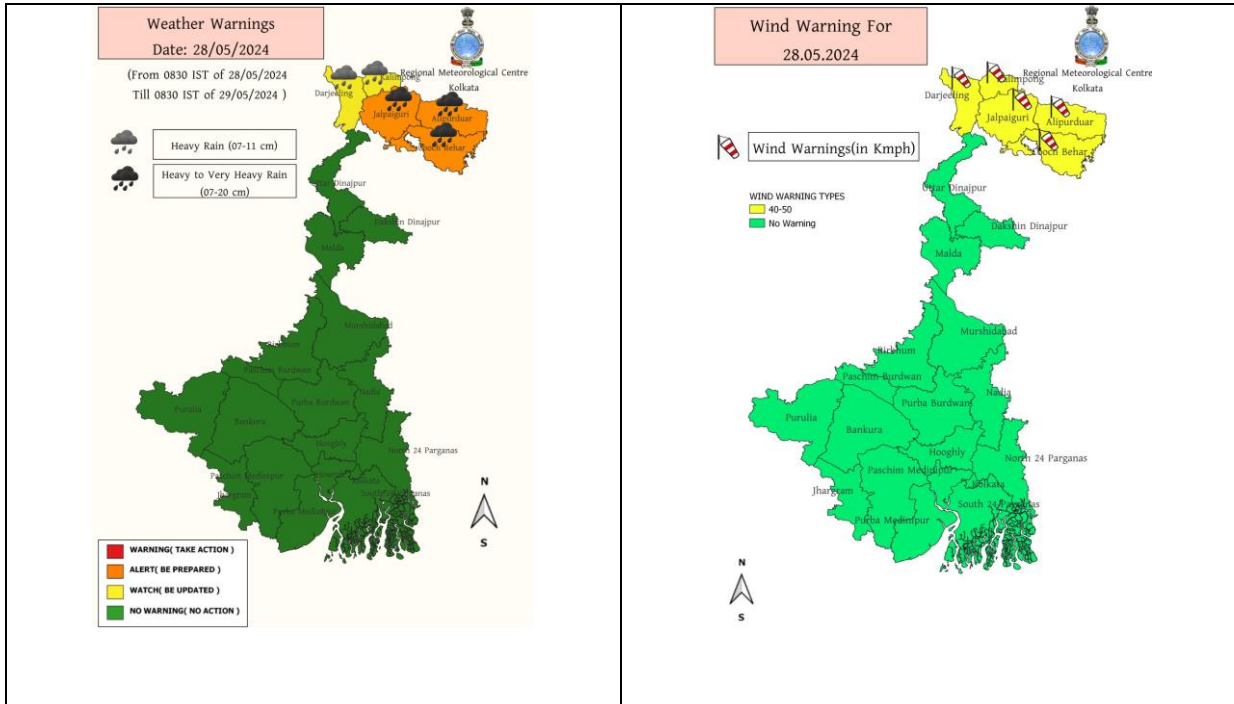
IMPACT OVER THE SEA

MSW (knot/kmph)	Impact	Action
28-33 (52-61)	Very rough seas	Total suspension of fishing operations
34-49 (62-91)	High to very high seas	Total suspension of fishing operations
50-63 (92-117)	Very high seas	Total suspension of fishing operations
\geq 64 (\geq 118)	Phenomenal	Total suspension of fishing operations

All India Warning Graphics

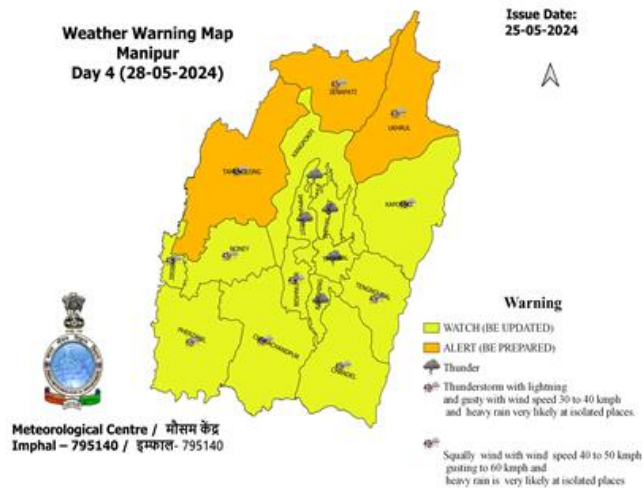


Warning Graphics of West Bengal



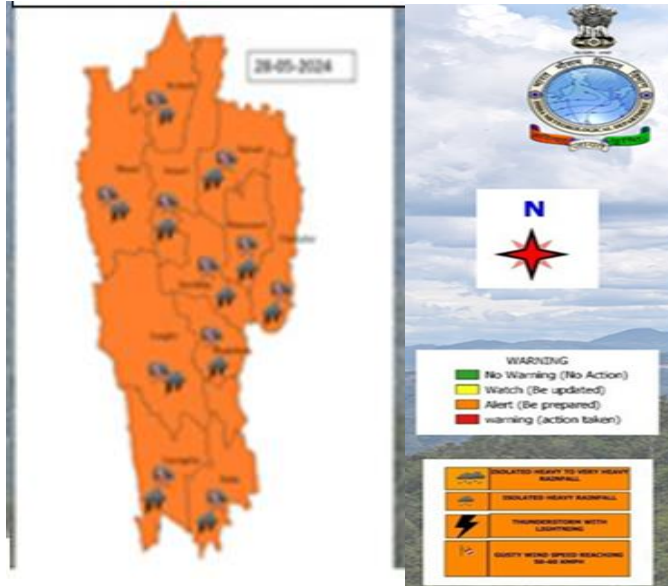
Warning Graphics of North-eastern States of India

MANIPUR



MIZORAM

Valid for 28th May, 2024



TRIPURA



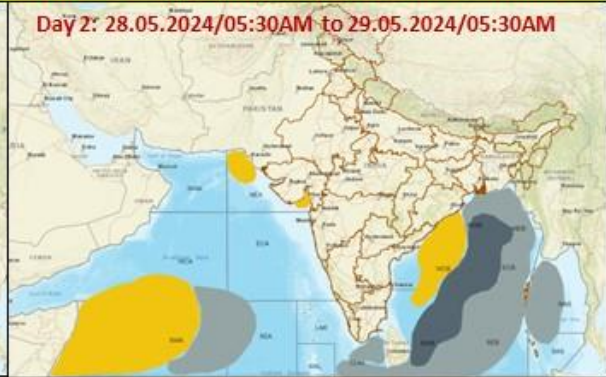
MEGHALAYA

Weather Warning Map
Meghalaya
Day-2 (28-05-2024)

Issue Date: 27-05-2024



Fishermen Warning Graphics



	Squally WX with wind speed 35-45 kmph gusting to 55 kmph
	Squally WX with wind speed 45-55 kmph gusting to 65 kmph
	Squally wind with speed 45-55 kmph gusting to 65 kmph
	Squally wind with speed 50-60 kmph gusting to 70 kmph
	CS with Gale wind speed 60-90 kmph gusting to 110 kmph

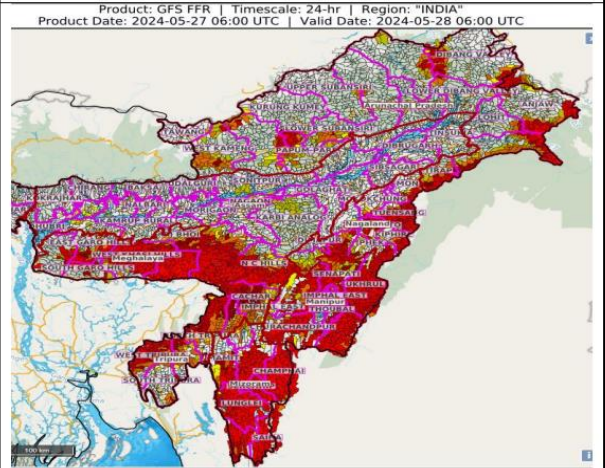
Fishermen are advised not to venture into the marked areas.

Flash Flood Guidance for Northeastern States

24 hours Outlook for the Flash Flood Risk (FFR) till 1130 IST of 28-05-2024 :

Moderate flash flood risk likely over few watersheds & neighbourhoods of **Arunachal Pradesh, Assam & Meghalaya** and NMMT Met Sub-divisions during next 24 hours.

Surface runoff/ Inundation may occur on low lying areas due to persistent rainfall under the influence of impending Cyclonic Storm "Remal" in next 24 hours.



Flash Flood Threat	Flash Flood Risk
 High Threat (Take Action)	 High Risk (Take Action)
 Moderate threat (Be Prepared)	 Moderate Risk (Be Prepared)
 Low Threat (Be Updated)	 Low Risk (Be Updated)