



**India Meteorological Department
(Ministry of Earth Sciences)**

BULLETIN NO. : 29 (BOB/02/2021)

TIME OF ISSUE: 1230 HOURS IST

DATED: 27.05.2021

FROM: INDIA METEOROLOGICAL DEPARTMENT (FAX NO. 24643965/24699216/24623220)

**TO: CONTROL ROOM, NDM, MINISTRY OF HOME AFFAIRS (FAX.NO. 23093750)
CONTROL ROOM NDMA (FAX.NO. 26701729)
CABINET SECRETARIAT (FAX.NO.23012284, 23018638)
PS TO HON'BLE MINISTER FOR S & T AND EARTH SCIENCES (FAX NO.23316745)
SECRETARY, MOES, (FAX NO. 24629777)
H.Q. (INTEGRATED DEFENCE STAFF AND CDS) (FAX NO. 23005137/23005147)
DIRECTOR GENERAL, DOORDARSHAN (23385843)
DIRECTOR GENERAL, AIR (23421105, 23421219)
PIB MOES (FAX NO. 23389042)
UNI (FAX NO. 23355841)
D.G. NATIONAL DISASTER RESPONSE FORCE (NDRF) (FAX NO. 26105912, 2436 3260)
DG COAST GUARD: (FAX NO:011- 23383196)
DIRECTOR, PUNCTUALITY, INDIAN RAILWAYS (FAX NO. 23388503)
CHIEF SECRETARY, WEST BENGAL (FAX NO. 033-22144328)
CHIEF SECRETARY, GOVT. OF ODISHA (FAX NO. 0674 -2536660)
CHIEF SECRETARY, JHARKHAND (FAX NO. 0651-2400255)
CHIEF SECRETARY, BIHAR (FAX NO. 0612-22217083/ 2217085)**

Sub: Deep Depression over south Jharkhand and neighborhood

The **Deep Depression** over south Jharkhand and neighborhood moved nearly northwards with a speed of about 05 kmph during past 6 hours and lay centred at 0830 hrs IST of today, the 27th May, 2021 over south Jharkhand and neighbourhood, near latitude 22.9°N and longitude 85.5°E, about 70km west-northwest of Jamshedpur and 65 km southeast of Ranchi (Jharkhand).

The system is very likely to move nearly northwards and weaken into a Depression during next 03 hours.

Warnings:

(i) Rainfall:

Odisha: Light to moderate rainfall at most places with heavy rains at isolated places over north interior Odisha on 27th May.

Jharkhand: Light to moderate rainfall at most places with heavy to very heavy rainfall at isolated places on 27th May.

West Bengal: Light to moderate rainfall at most places with heavy to very rainfall at isolated places on 27th May.

Bihar: Light to moderate rainfall at many places with heavy to very heavy rainfall & extremely heavy rainfall at isolated places on 27th and heavy to very heavy rainfall at isolated places on 28th May.

East Uttar Pradesh: Light to moderate rainfall at many places with heavy to very heavy rainfall & extremely heavy rainfall at isolated places on 27th and heavy to very heavy rainfall at isolated places on 28th May.

(ii) Wind warning:

- Squally wind speed reaching 50-60 kmph gusting to 70 kmph would prevail over south Jharkhand and adjoining districts of north interior Districts of Odisha and West Bengal during next 3 hours and decrease gradually thereafter.

Damage expected & action suggested for Jharkhand and adjoining areas during next 3 hours:

- Minor damage to thatched houses/ huts.
- Minor damage to power and communication lines.
- Minor damage to Kutcha and some damage to Pucca roads.
- Breaking of tree branches. Damage to banana and papaya trees.
- Judicious regulation of rail and road traffic.

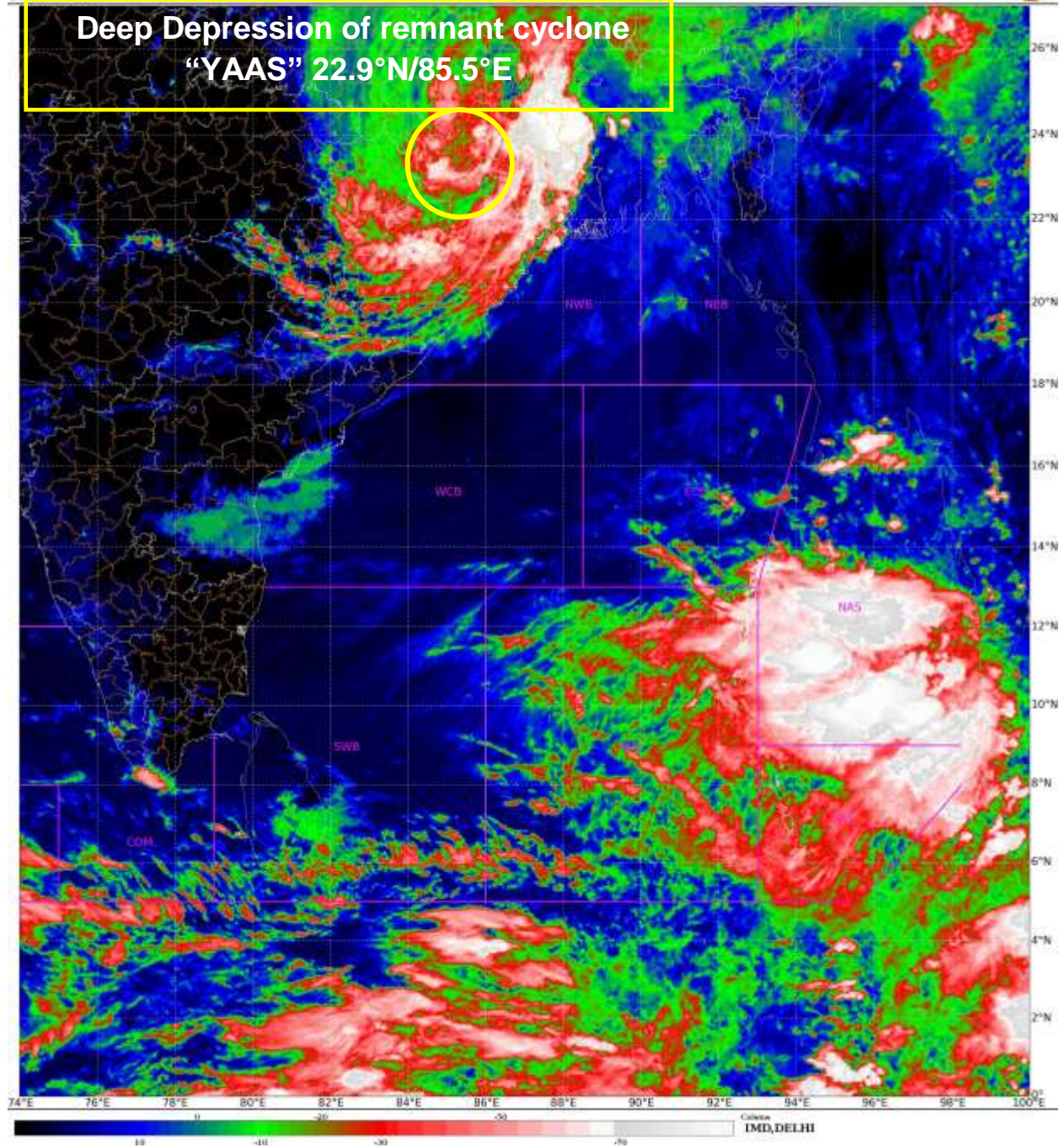
The next bulletin will be issued at 1430 hrs IST of today, the 27th May, 2021.

(Sunitha Devi. S)
Scientist-F, RSMC, New Delhi

Copy to: ACWC Kolkata/ CWC Bhubaneswar



**Deep Depression of remnant cyclone
"YAAS" 22.9°N/85.5°E**





OBSERVED AND FORECAST TRACK OF DEEP DEPRESSION (REMNANT OF VERY SEVERE CYCLONIC STORM "YAAS") OVER SOUTH JHARKHAND AND NEIGHBOURHOOD BASED ON 0300 UTC OF 27th MAY, 2021



DATE/TIME IN UTC
 IST=UTC + 0530
 L: LOW PRESSURE AREA
 WML: WELL MARKED LOW PRESSURE AREA
 D: DEPRESSION (17-27 KT)
 DD: DEEP DEPRESSION (28-33 KT)
 CS: CYCLONIC STORM (34-47 KT)
 SCS: SEVERE CYCLONIC STORM (48-63KT)
 VSCS: VERY SEVERE CYCLONIC STORM (64-89 KT)
 ESCS: EXTREMELY SEVERE CYCLONIC STORM (90-119 KT)
 SuCS: SUPER CYCLONIC STORM (≥ 20 KT)

- LESS THAN 34 KT
- 34-47 KT
- ≥ 48 KT
- OBSERVED TRACK
- FORECAST TRACK
- CONE OF UNCERTAINTY