



**Government of India
Ministry of Earth Sciences
India Meteorological Department**



Press Release

Date: 05th August, 2025

Time of Issue: 1330 hours IST

**Subject: i) Heavy to very heavy rainfall likely to continue over Himachal Pradesh, Uttarakhand, Uttar Pradesh during next 3 days with isolated extremely heavy falls over northwest Uttar Pradesh and Uttarakhand today.
ii) Heavy to very heavy rainfall likely over Tamil Nadu & Kerala during next 5 days with isolated extremely heavy falls over Kerala on 05th & 06th and Ghat areas of Tamil Nadu on 05th August.
iii) Heavy to very heavy rainfall likely to continue over Northeast & adjoining East India during next 7 days.
iv) Subdued rainfall activities likely over Central India during next 6-7 days.**

Realised weather during past 24 hours till 0830 hours IST of today, the 05th August, 2025:

- ❖ **Heavy to very heavy rainfall with extremely heavy falls (≥ 21 cm)** has been recorded at isolated places over Uttarakhand, West Uttar Pradesh and Kerala.
- ❖ **Heavy to very heavy rainfall (7-20 cm)** has been recorded at isolated places over Himachal Pradesh, Telangana, Assam, Tripura; **Heavy rainfall (7-11 cm)** at isolated places over West Bengal, Odisha, Bihar, Lakshadweep, Tamil Nadu, South Interior Karnataka, Coastal Andhra Pradesh, Rayalaseema, Meghalaya, East Uttar Pradesh and northwest Madhya Pradesh.

For more details of realised weather, kindly refer [Annexure I](#).

i. Weather Systems, Forecast and Warnings (refer to [Annexure II & III](#)):

- ❖ The western end of monsoon trough to the north of its normal position at mean sea level and eastern end runs near the foothills of the Himalayas.
 - ❖ An upper air cyclonic circulation over Southwest Bay of Bengal off North Tamil Nadu coast in lower & middle tropospheric levels tilting southward with height.
 - ❖ An upper air cyclonic circulation lies over Rayalaseema and another south Kerala & neighbourhood in lower tropospheric levels.
 - ❖ An east-west trough now runs roughly along Lat. 10°N from southern parts of eastcentral Arabian Sea to central parts of south Bay of Bengal in lower & middle tropospheric levels tilting southward with height.
 - ❖ A Western Disturbance as a trough in middle tropospheric level runs roughly along Long. 72°E to north of 30°N.
 - ❖ A trough runs from northwest Uttar Pradesh to northeast Arabian sea in lower tropospheric levels.
 - ❖ An upper air cyclonic circulation likely to form over south Bangladesh & neighbourhood around 08th August, 2025.
- Under the influence of these systems, the following weather is likely:

Northwest India:

- ❖ **Extremely heavy rainfall (≥ 21 cm) very likely at isolated places over West Uttar Pradesh and Uttarakhand on 05th August.**
- ❖ Isolated **heavy rainfall** likely over Uttarakhand, Himachal Pradesh during 05th-11th; Jammu-Kashmir on 05th & 06th; Punjab on 05th, 10th & 11th; Haryana, West Uttar Pradesh on 05th, 06th, 10th & 11th; East Uttar Pradesh on 05th & 11th August with **very heavy rainfall** over Himachal Pradesh, Uttarakhand, Haryana, Punjab, East Uttar Pradesh on 05th August.
- ❖ Light/moderate rainfall at many places accompanied with thunderstorm & lightning likely over Western Himalayan region and many/some places over the plains during next 7 days.

South Peninsular India:

- ❖ **Extremely heavy rainfall (≥ 21 cm) very likely at isolated places over Kerala on 05th & 06th (northern parts of Kerala) and Ghat areas of Tamil Nadu on 05th August.**
- ❖ Isolated **heavy rainfall** likely over Tamil Nadu, Kerala & Mahe, Karnataka, Coastal Andhra Pradesh & Yanam, Telangana, Rayalaseema during 05th-08th; Lakshadweep on 05th & 06th August with **very heavy rainfall** over Tamil Nadu on 06th; Coastal & South Interior Karnataka on 05th & 06th; North Interior Karnataka on 05th August.
- ❖ Strong surface winds (speed reaching 40-50 kmph) very likely over South Peninsular India during next 2 days.
- ❖ Light to moderate rainfall at some/many places accompanied with thunderstorm & lightning likely over Tamil Nadu, Kerala & Mahe, Lakshadweep, Karnataka, Rayalaseema, Coastal Andhra Pradesh & Yanam and Telangana during next 5 days.

Northeast India:

- ❖ Light/moderate rainfall at many places accompanied with thunderstorm, lightning and isolated **heavy rainfall** likely to continue over Arunachal Pradesh, Assam & Meghalaya Nagaland, Manipur, Mizoram & Tripura during 05th-11th August with isolated **very heavy rainfall over Arunachal Pradesh, Assam & Meghalaya during 07th-11th and Nagaland on 07th & 08th August.**

East & Central India:

- ❖ Isolated **heavy rainfall** likely over Sub-Himalayan West Bengal & Sikkim, Bihar during 05th-11th; Odisha during 06th-08th; Gangetic West Bengal during 05th-08th; Jharkhand on 07th & 08th; northwest Madhya Pradesh on 05th August **with isolated very heavy rainfall over Bihar on 07th & 08th; Sub-Himalayan West Bengal & Sikkim on 07th & 11th August.**
- ❖ Light to moderate rainfall at most/many places accompanied with thunderstorm & lightning likely over the region during next 5 days.

West India:

- ❖ Isolated **heavy rainfall** likely over Marathwada during 05th-07th; Goa on 05th; Konkan & Goa on 07th & 08th and Madhya Maharashtra on 05th & 07th August.
- ❖ Light to moderate rainfall at many/some places very likely over the region during next 5-6 days.

Fishermen warning:

Fishermen are advised to avoid venturing into the following from 05th August to 10th August 2025 to the following Areas:

Arabian Sea: Along and off Kerala, Karnataka coast Lakshadweep area, Comorin & Maldives and adjoining sea areas during 05th August to 07th August; few parts of southeast Arabian Sea on 05th August, some parts of southwest Arabian Sea; some parts of westcentral Arabian Sea; along and off the Somalia coast and adjoining sea areas during 05th to 10th August, south Oman & adjoining sea areas on 6th August.

Bay of Bengal: Many parts of southwest Bay of Bengal during 05th to 07th August; & few parts of southwest Bay of Bengal during 07th to 10th August; Over Gulf of Mannar during 05th to 08th August.

ii. Weather conditions and forecast over Delhi/NCR during 05th to 08th August, 2025 (Annexure IV)

For more details, kindly refer National Weather Bulletin:

https://mausam.imd.gov.in/responsive/all_india_forecast_bulletin.php

For District wise warnings refer: <https://mausam.imd.gov.in/responsive/districtWiseWarningGIS.php>

For Fishermen warning refer <https://rsmcnewdelhi.imd.gov.in/fishermen-warning.php>

Rainfall recorded (in cm) during past 24 hours till 0830 hours IST of today, the 05th August:

Uttarakhand: Hardwar (dist Hardwar) 30; Narendranagar (dist Garhwal Tehri) 17; Rishikesh (dist Dehradun) 14; Jollygrant (dist Dehradun) 13; Kotdwara (dist Garhwal Pauri) 12; Roshnabad (dist Hardwar) 9; Dehra Dun (dist Dehradun), Roorkee (dist Hardwar), Laksar (dist Hardwar) 8 Each; Kashipur (dist Udham Singh Nagar), Haripur (dist Dehradun) 7 Each;

West Uttar Pradesh: Bijnor (dist Bijnor) 24; Najibabad (t) (dist Bijnor) 22; Kanth (dist Moradabad), Nagina (dist Bijnor) 17 Each; Shahjahanpur (dist Shahjahanpur), Shahjahanpur (t) (dist Shahjahanpur) 15 Each; Chandpur (dist Bijnor) 12; Dhampur (dist Bijnor) 11; Moradabad (dist Moradabad), Moradabad (dist Moradabad) 10 Each; Jalaun (dist Jalaun), Moradabad CWC (dist Moradabad) 9 Each; Rath (dist Hamirpur) 8; Bareilly PBO (dist Bareilly), Amroha (dist Amroha), Bilari (dist Moradabad), Deoband (dist Saharanpur) 7 Each;

Kerala & Mahe: Piravam (dist Ernakulam) 22; Peechi AWS (dist Thrissur) 13; Choondy AWS (dist Ernakulam) 8; Vellanikkara (dist Thrissur), Kottayam (dist Kottayam), Vadavathur AWS (dist Kottayam) 7 Each;

Assam & Meghalaya: A P Ghat (dist Cachar) 18; Silchar (dist Cachar) 14; Cherrapunji (dist East Khasi Hills) 13; Shella (dist East Khasi Hills) 12; B P Ghat (dist Sribhumi), Karimganj (dist Sribhumi) 11 Each; Cherrapunji(rkm) (dist East Khasi Hills), Aie Nh Xing (dist Bongaigaon) 10 Each; Srijangram ARG (dist Bongaigaon) 9; Mawsynram (dist East Khasi Hills), Bhaghmara (dist South Garo Hills) 8 Each; Matijuri (dist Hailakandi) 7;

Himachal Pradesh: Mandi (dist Mandi) 15; Nadaun (dist Hamirpur), Sundarnagar (dist Mandi) 8 Each; Gohar (dist Mandi) 7;

South Interior Karnataka: Madhugiri (dist Tumakuru) 11; Sira (dist Tumakuru) 8; Bargur (dist Tumakuru), Nayakanahatty (dist Chitradurga), Nagamangala (dist Mandya) 7 Each;

Telangana: Amberpet (dist Hyderabad) 11; Shekpet (dist Hyderabad) 10; Wargal (dist Siddipet) 8; Hakimpet IAF (dist M. Malkajgiri), Dullapally AP (dist Rangareddy) 7 Each;

East Uttar Pradesh: Kheri Lakhimpur (dist Kheri) 10; Trimohani Ghat Fmo (dist Maharajganj) 9; Muhammadi (dist Kheri) 7;

Nagaland, Manipur, Mizoram & Tripura: Kadamtala ARG (dist North Tripura) 10; Jiribam AWS (dist Imphal East), Ashapara AWS (dist North Tripura), Jirania ARG (dist West Tripura) 7 Each;

Tamil Nadu, Puducherry & Karaikal: Puducherry (dist Puducherry), Basl Mugaiyur (dist Villupuram) 10 Each; Thandarampettai (dist Tiruvannamalai) 9; Alangayam (dist Tirupattur), Budalur (dist Thanjavur) 8 Each; Panapakkam (dist Ranipet) 7;

Sub Himalayan West Bengal & Sikkim: Falakata (dist Alipurduar) 9; Ghatia T.e. (dist Jalpaiguri) 8; Chengmari/Diana (dist Jalpaiguri) 7;

Coastal Andhra Pradesh & Yanam: Koyyalagudem (dist Eluru) 9;

Gangetic West Bengal: Narayanpur (dist Birbhum) 9;

Bihar: Darauli (dist Siwan) 9, Duraundha (dist Siwan) 9, Jhanjharpur (dist Madhubani) 8, Gaunaha (dist West Champaran) 8, Sarmera (dist Nalanda) 7, Korha (dist Katihar) 7, Barahar Kothi (dist Purnea) 7, Buxar (dist Buxar) 7, Sikta (dist West Champaran) 7, Bagaha (dist West Champaran) 7, Balchhi (dist Patna) 7, Sonbarsa (dist Saharsa) 7,

Rayalaseema: Thottambedu (dist Tirupati) 8;

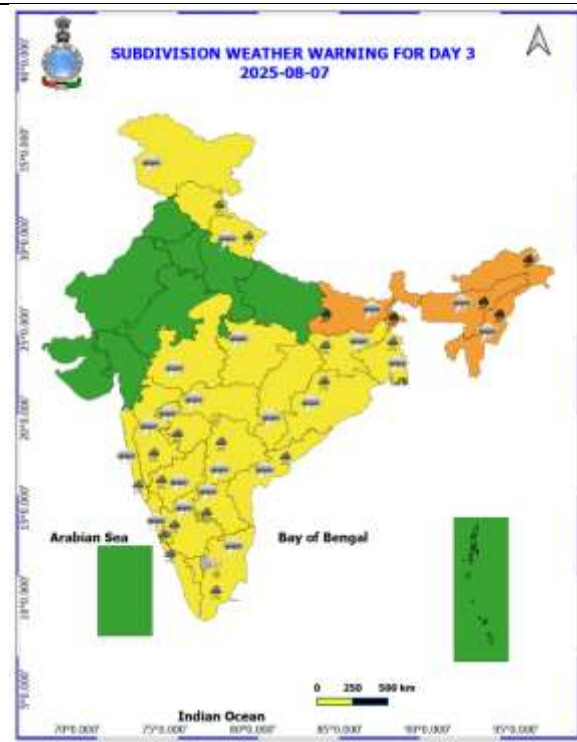
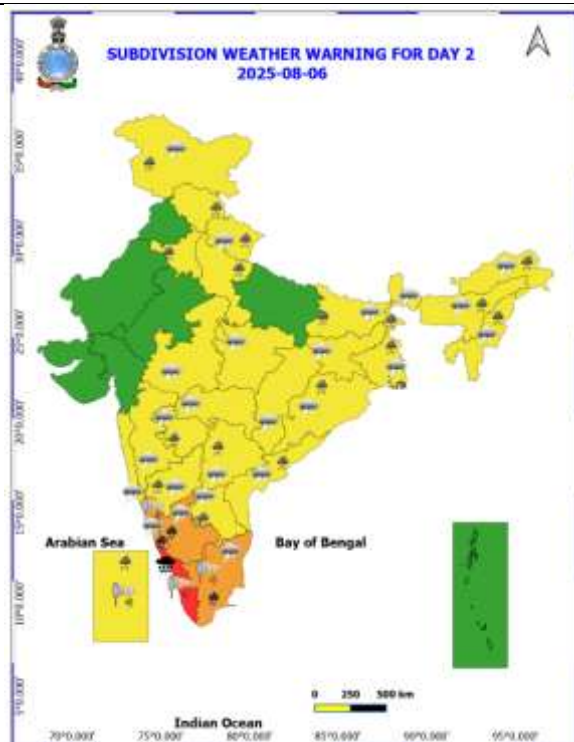
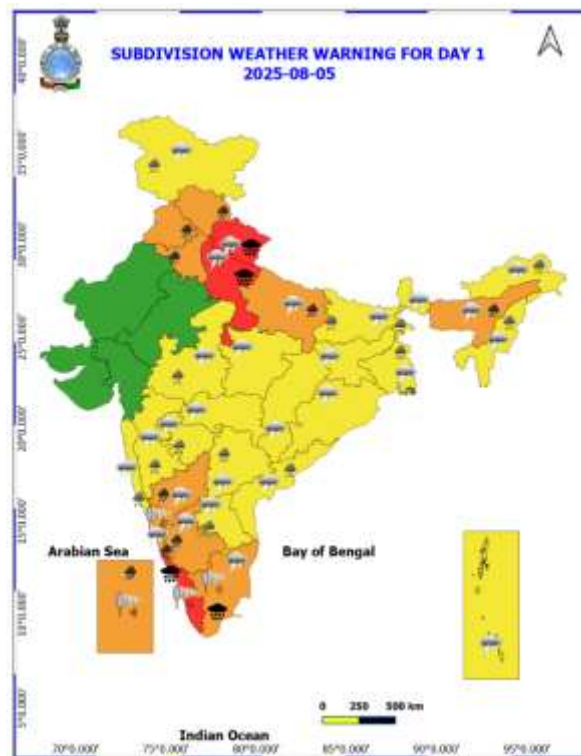
Lakshadweep: Agathi (dist Lakshadweep), Minicoy (dist Lakshadweep) 7 Each;

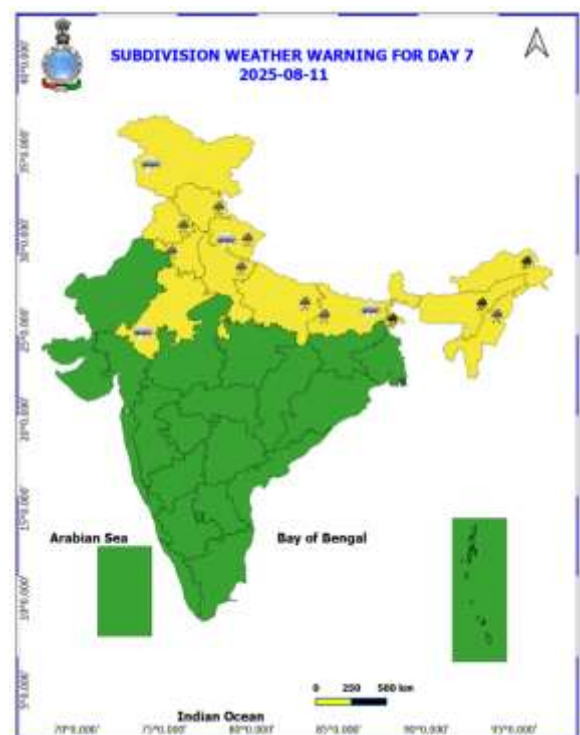
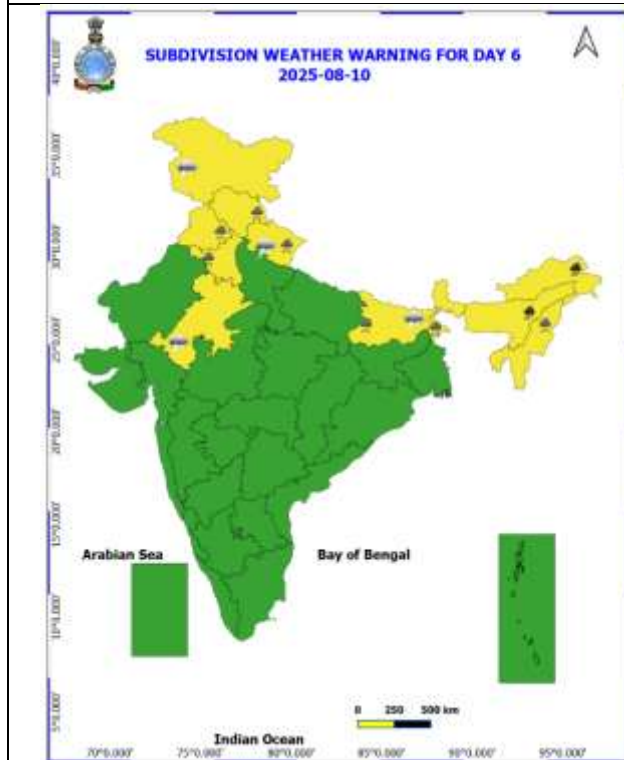
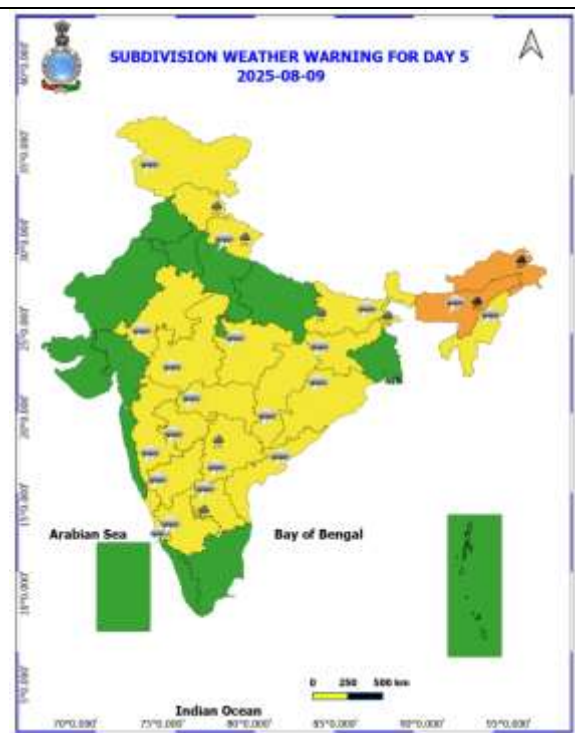
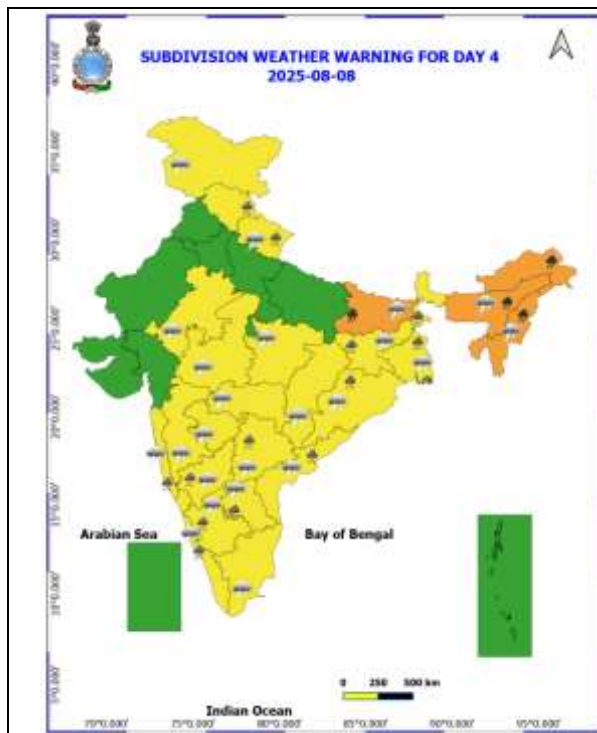
West Madhya Pradesh: Roan (dist Bhind), Mihona (dist Bhind) 7 Each;

Odisha: Baripada (dist Mayurbhanj) 7.

Table-1								
7 Days Rainfall Forecast								
S.No.	Subdivision	5- Aug	6- Aug	7- Aug	8- Aug	9- Aug	10- Aug	11- Aug
		Day 1	Day 2	Day 3	Day 4	Day 5	Day 6	Day 7
1	ANDAMAN & NICOBAR ISLANDS	SCT	FWS	FWS	FWS	FWS	FWS	FWS
2	ARUNACHAL PRADESH	FWS	FWS	WS	WS	WS	WS	WS
3	ASSAM & MEHGHALAYA	WS	FWS	WS	WS	WS	WS	WS
4	NAGALAND, MANIPUR, MIZORAM AND TRIPURA	WS	FWS	FWS	FWS	FWS	FWS	FWS
5	SUB HIMALAYAN WEST BENGAL & SIKKIM	WS	WS	WS	WS	WS	WS	SCT
6	GANGETIC WEST BENGAL	WS	WS	WS	WS	FWS	FWS	FWS
7	ODISHA	SCT	FWS	WS	FWS	SCT	SCT	SCT
8	JHARKHAND	SCT	FWS	FWS	FWS	FWS	FWS	FWS
9	BIHAR	FWS	SCT	FWS	FWS	FWS	FWS	FWS
10	EAST UTTAR PRADESH	FWS	SCT	SCT	FWS	FWS	SCT	FWS
11	WEST UTTAR PRADESH	WS	FWS	SCT	SCT	FWS	FWS	FWS
12	UTTARAKHAND	WS	FWS	FWS	FWS	FWS	FWS	FWS
13	HARYANA, CHANDIGARH & DELHI	WS	SCT	ISOL	SCT	FWS	FWS	FWS
14	PUNJAB	FWS	SCT	ISOL	SCT	FWS	FWS	FWS
15	HIMACHAL PRADESH	WS	FWS	FWS	FWS	FWS	FWS	FWS
16	JAMMU AND KASHMIR AND LADAKH	WS	FWS	SCT	SCT	SCT	SCT	SCT
17	WEST RAJASTHAN	DRY	DRY	DRY	ISOL	ISOL	ISOL	ISOL
18	EAST RAJASTHAN	ISOL	ISOL	ISOL	SCT	SCT	SCT	SCT
19	WEST MADHYA PRADESH	SCT	SCT	SCT	SCT	FWS	FWS	FWS
20	EAST MADHYA PRADESH	SCT	SCT	SCT	FWS	FWS	FWS	FWS
21	GUJRAT REGION	FWS	FWS	FWS	FWS	SCT	SCT	SCT
22	SAURASHTRA & KUTCH	FWS	SCT	SCT	SCT	SCT	SCT	SCT
23	KONKAN & GOA	FWS	FWS	WS	WS	WS	WS	WS
24	MADHYA MAHARASHTRA	SCT	SCT	FWS	FWS	SCT	SCT	SCT
25	MARATHWADA	SCT	FWS	FWS	FWS	SCT	ISOL	ISOL
26	VIDARBHA	SCT	SCT	SCT	FWS	FWS	FWS	FWS
27	CHHATTISGARH	SCT	SCT	FWS	WS	WS	FWS	FWS
28	COASTAL ANDHRA PRADESH	SCT	SCT	SCT	SCT	SCT	ISOL	ISOL
29	TELANGANA	FWS	FWS	FWS	FWS	FWS	FWS	FWS
30	RAYALASEEMA	FWS	FWS	FWS	FWS	FWS	SCT	SCT
31	TAMILNADU & PUDUCHERRY	FWS	SCT	SCT	SCT	SCT	ISOL	ISOL
32	COSTAL KARNATAKA	WS	WS	WS	WS	FWS	FWS	FWS
33	NORTH INTERIOR KARNATAKA	FWS	WS	WS	WS	WS	FWS	FWS
34	SOUTH INTERIOR KARNATAKA	WS	WS	WS	FWS	SCT	SCT	FWS
35	KERALA AND MAHE	WS	WS	WS	FWS	FWS	FWS	FWS
36	LAKSHADWEEP	WS	WS	WS	FWS	FWS	FWS	FWS

- As the lead period increases forecast accuracy decrease.





- Action may be taken based on ORANGE AND REDCOLOUR warnings.
- Vulnerable regions likely urban and hilly areas action may be initiated for heavy rainfall warning.
- As the lead period increases forecast accuracy decreases.

Detailed districtwise Multi Hazard weather warning for next five days available at <https://mausam.imd.gov.in/responsive/districtWiseWarningGIS.php>

Weather forecast over Delhi/NCR during 05th to 08th August 2025**Past Weather:**

There has been fall in the minimum temperature up to 1 – 2°C and fall in maximum temperature up to 1°C over Delhi/NCR during the past 24 hours. The maximum and minimum temperatures over Delhi were around 32 to 33°C and 25 to 26°C respectively. The minimum and maximum temperatures were near normal. Partly cloudy sky conditions with predominant surface wind from the southwest direction with wind speeds up to 16 kmph prevailed during the past 24 hours. Generally cloudy sky conditions with a wind speed of less than 16 kmph from the southwest direction prevailed over the region in the forenoon today.

Weather Forecast:

05.08.2025: Generally cloudy sky. A few spells of very light to light rain/thundershowers at many places with possibility of moderate rain at isolated places during afternoon/evening. The maximum temperatures over Delhi are likely to be in the range of 31 to 33°C. The maximum temperature will be below normal up to 1 to 3°C. The predominant surface wind will likely be from the southwest direction with a wind speed of 10-15 kmph in the afternoon. The wind speed will remain same to 10-15 kmph from the southwest direction during evening and night.

06.08.2025: Partly cloudy sky. Possibility of a spell of very light to light rain during early hours to morning. The maximum and minimum temperatures over Delhi are likely to be in the range of 32 to 34°C and 24 to 26°C respectively. The minimum temperature will be below normal up to 1 to 2°C and the maximum temperature will be below normal up to 1 to 2°C. The predominant surface wind will likely be from the southeast direction with a wind speed of less than 12 kmph during the morning hours. The wind speed will gradually increase becoming less than 16 kmph from the southwest direction in the afternoon. The wind speed will gradually decrease becoming less than 12 kmph from the southeast direction during the evening and night.

07.08.2025: Partly cloudy sky. Possibility of very light rain/thundershowers. The maximum and minimum temperatures over Delhi are likely to be in the range of 33 to 35°C and 24 to 26°C respectively. The minimum temperature will be below normal up to 1 to 2°C and the maximum temperature will be near normal. The predominant surface wind will likely be from the southwest direction with a wind speed of less than 20 kmph during the morning hours. The wind speed will gradually decrease becoming less than 16 kmph from the southwest direction in the afternoon. The wind speed will gradually decrease becoming less than 12 kmph from the southwest direction during the evening and night.

08.08.2025: Partly cloudy sky. Possibility of very light to light rain/thundershowers. The maximum and minimum temperatures over Delhi are likely to be in the range of 33 to 35°C and 23 to 25°C respectively. The minimum temperature will be below normal up to 1 to 2°C and the maximum temperature will be near normal. The predominant surface wind will likely be from the northwest direction with a wind speed of less than 15 kmph during the morning hours. The wind speed will gradually decrease becoming less than 10 kmph from the northwest direction in the afternoon. The wind speed will gradually increase becoming less than 15 kmph from the southeast direction during the evening and night.

Impact expected and Action Suggested due to light to moderate rainfall with thundershowers:

- Be cautious and take precautionary measures, though there is the likelihood of thunderstorms/lightning.
- Damage to standing crops, Minor to major damage to power and communication lines due to breaking of branches, Partial damage to vulnerable structures due to strong winds, Loose objects may fly.
- People are advised to keep a watch on the weather for worsening conditions and be ready to move to safer places accordingly, stay indoors, close windows & doors and avoid travel if possible, take safe shelters; do not take shelter under trees, do not lie on concrete floors and do not lean against concrete walls, unplug electrical/ electronic appliances, immediately get out of water bodies, keep away from all the objects that conduct electricity.

Impact & Action Suggested due to

- ✓ **Extremely heavy rainfall very likely at isolated places over northwest Uttar Pradesh, Uttarakhand, Ghat areas of Tamil Nadu on 05th and Kerala on 05th & 06th August.**
- ✓ **Very heavy rainfall** over Himachal Pradesh, Uttarakhand, Haryana, Punjab, East Uttar Pradesh, Assam on 05th; Bihar on 07th & 08th; Sub-Himalayan West Bengal & Sikkim on 07th & 11th August, Arunachal Pradesh and Assam & Meghalaya during 07th-11th August.

Impact Expected

- Localized Flooding of roads, water logging in low lying areas and closure of underpasses mainly in urban areas of the above region.
- Occasional reduction in visibility due to heavy rainfall.
- Disruption of traffic in major cities due to water logging in roads leading to increased travel time.
- Minor damage to kutchha roads.
- Possibilities of damage to vulnerable structure.
- Localized Landslides/Mudslides/landslips/mudslips/landsinks/mudsinks.
- Damage to horticulture and standing crops in some areas due to inundation.
- It may lead to riverine flooding in some river catchments (for riverine flooding please visit Web page of CWC)

Action Suggested

- Check for traffic congestion on your route before leaving for your destination.
- Follow any traffic advisories that are issued in this regard.
- Avoid going to areas that face the water logging problems often.
- Avoid staying in vulnerable structure.

Agromet advisories for likely impact of Heavy / Heavy to Very Heavy / Extremely Heavy Rainfall

- In **Uttar Pradesh**, postpone sowing of pigeon pea, chilli, onion and planting of banana and papaya and make necessary arrangements for drainage of excess water from the fields in **Bundelkhand Zone**. Make proper arrangement for drainage in fields of autumn sugarcane, spring sugarcane, paddy, pigeon pea, maize, green gram, black gram and vegetables in **South Western Semi-Arid Zone** and pigeon pea, soybean, maize, groundnut, green gram, black gram and barnyard millet in **Eastern Plain Zone**.
- In **Uttarakhand**, to avoid waterlogging, maintain proper drainage channels in fields of rice, sugarcane, maize, black gram, green gram, soybean, and vegetables in **Bhabar and Tarai Zone** and barnyard millet, finger millet, green gram and black gram in **Sub Humid Sub Tropic Zone**. Postpone sowing of green gram and soybean in **Nainital** district. In **Hill Zone**, strengthen the bunds to prevent surface runoff of water. Postpone sowing of vegetable pea in case of excessive wet soil conditions. Maintain proper drainage channels in the crop fields.
- In **Himachal Pradesh**, cover the cauliflower nursery with plastic sheets to prevent damage from heavy rainfall in **High Hills Sub Temperate Wet Zone**. Make proper drainage channels in vegetable fields in **Mid Hills Sub Humid Zone**; rice, maize and vegetable fields in **Sub Montane and Low Hills Sub Tropical Zone** and kidney beans, finger millet, cucurbits and vegetables in **High Hills Sub Temperate Wet Zone**.
- In **Arunachal Pradesh**, postpone all fresh sowing operations till cessation of heavy rains. Avoid fresh transplanting of rice in lowlands during heavy rainfall. Cover rice fields with natural mulches like dry leaves or straw to avert the adverse impact of rain. Ensure proper drainage in rice, maize, finger millet, soybean and vegetables and fruit orchards to avoid waterlogging. Provide strong support to fruit-bearing plants to prevent them from bending or breaking during heavy rains.
- In **Assam**, postpone the sowing of sesame, green gram and pigeon pea till cessation of heavy rains in **Kokrajhar** and **Bongaigaon** districts. In **Central Brahmaputra Valley Zone**, harvest matured jute immediately and keep the bundles of harvested produce in high land or shed to avoid retting in contaminated water. Avoid sowing of sesame during heavy rainfall. To prevent waterlogging, ensure proper drainage in *Sali* rice, green gram and pigeon pea fields in **Lower Brahmaputra Valley Zone**; *Sali* rice, turmeric and already sown sesame fields in **Central Brahmaputra Valley Zone**; rice and sesame fields in **Hill Zone** and *Sali* rice fields in **North Bank Plain Zone, Upper Brahmaputra Valley Zone** and **Barak Valley Zone**.
- In **Meghalaya**, avoid transplanting of rice during heavy rainfall. Ensure proper drainage in rice, maize, turmeric, chilli, okra and bitter gourd fields to prevent waterlogging. Provide staking / support to tall and fragile crops like banana, papaya, bottle gourd etc. to prevent lodging.

- In **Sub-Himalayan West Bengal**, make provision to drain out excess water from rice, ginger, vegetable fields and fruit orchards in **Hill Zone** and *aman* paddy and vegetable fields in **Terai Zone**. Cover the chilli seedlings with plastic to protect them from heavy rains in **Terai Zone**.
- In **Bihar**, ensure proper drainage in maize, vegetables, ragi, kodo, sava, etc. in low-lying areas and strengthen field bunds in **South Bihar Alluvial Zone**. Maintain proper drainage in maize fields and do not allow rain water to accumulate in the fields of ragi, kodo, sava, etc. in **North East Alluvial Zone**.
- In **Kerala**, provide adequate drainage in fields of rice, coconut, banana and ginger. Provide support to banana plantations. Make the vegetable pandals stronger.
- In **Tamil Nadu**, provide support to sugarcane and banana plants to prevent lodging. Provide proper drainage facility in rice nursery in **North Eastern Zone** and standing crop fields in **Cauvery Delta Zone**.
- In **Karnataka**, provide adequate drainage facilities in arecanut and banana plantations in **Coastal Zone**; fields of maize, cotton, ginger and plantations of arecanut in **Hill Zone** and arecanut and coconut plantations in **Southern Transition Zone**.

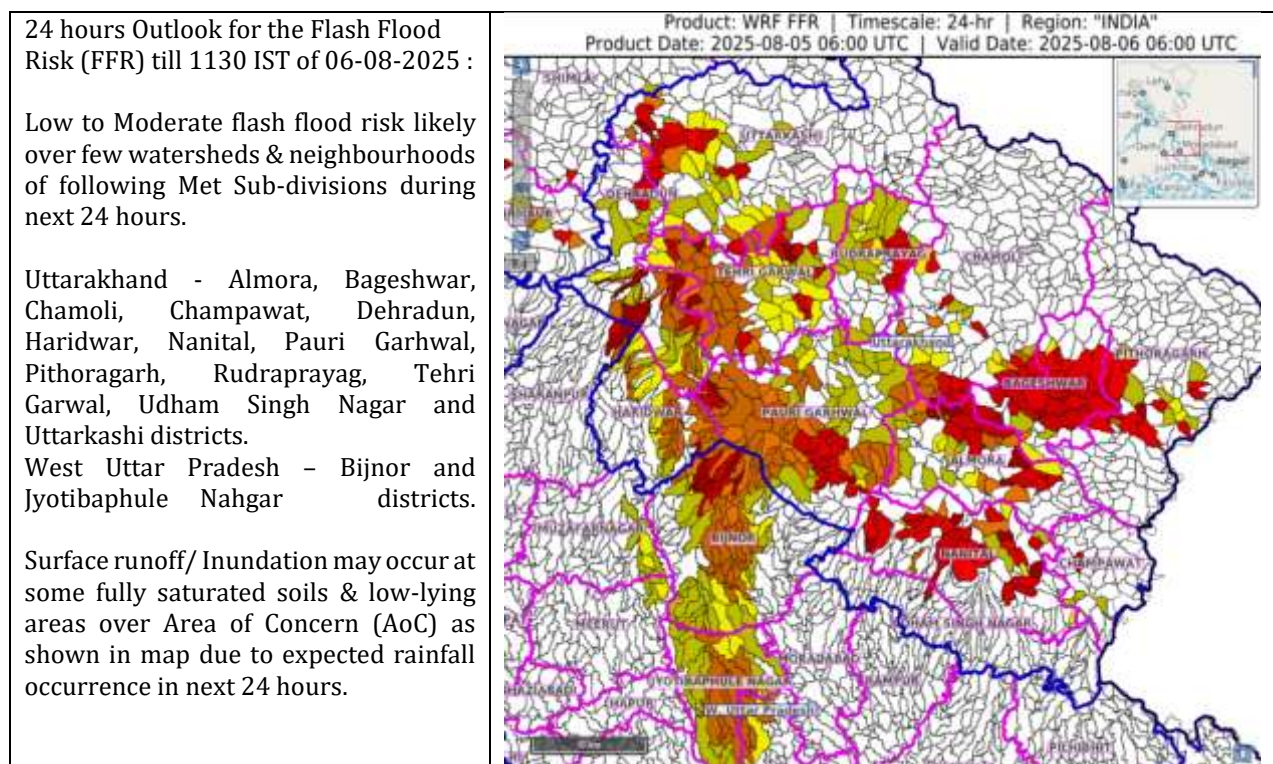
Livestock / Fishery

- Keep the animals inside the shed during heavy rainfall and provide them balanced feed.
- Store feed and fodder in a safe place to prevent spoilage.
- Construct an outlet with proper netting around the ponds to drain out excess water, thereby preventing fish from escaping in case of overflow.

Agromet advisories for likely impact of Thunderstorm / Gusty Winds / Squally Winds

- Provide mechanical support to horticultural crops and staking or support to vegetables and young fruit plants / fruit-bearing plants to avoid lodging due to strong winds.

Flash flood guidance:



Legends & abbreviations:

- ❖ **Heavy Rain:**64.5-115.5mm; **Very Heavy Rain:**115.6-204.4mm; **Extremely Heavy Rain:** >204.4mm.
- ❖ **Obsy:** Observatory; Automatic Weather Station; **ARG:** Automatic Rain Gauge; **dist:** District; **NH:** National Highway; **KVK:** Krishi Vigyan Kendra; **DVC:** Damodar Valley Corporation; **PTO:** Part Time Office, **Aero:** Aerodrome, **IAF:** Indian Air Force.
- ❖ **Region wise classification of meteorological Sub-Divisions:**
 - **Northwest India:** Western Himalayan Region (Jammu-Kashmir-Ladakh-Gilgit-Baltistan-Muzaffarabad, Himachal Pradesh and Uttarakhand); Punjab, Haryana-Chandigarh-Delhi; West Uttar Pradesh, East Uttar Pradesh, West Rajasthan and East Rajasthan.
 - **Central India:** West Madhya Pradesh, East Madhya Pradesh, Vidarbha and Chhattisgarh.
 - **East India:** Bihar, Jharkhand, Sub-Himalayan West Bengal & Sikkim; Gangetic West Bengal, Odisha and Andaman & Nicobar Islands.
 - **Northeast India:** Arunachal Pradesh, Assam & Meghalaya and Nagaland, Manipur, Mizoram & Tripura.
 - **West India:** Gujarat Region, Saurashtra & Kutch, Konkan & Goa, Madhya Maharashtra and Marathawada.
 - **South India:** Coastal Andhra Pradesh & Yanam, Telangana, Rayalaseema, Coastal Karnataka, North Interior Karnataka, South Interior Karnataka, Kerala & Mahe, Tamil Nadu, Puducherry & Karaikal and Lakshadweep.

LEGENDS

1. अंडमान और निकोबार द्वीपसमूह

2. अरुणाचल प्रदेश

3. असम और मेघालय

4. नागालैंड, मणिपुर, मिजोरम और त्रिपुरा

5. उप-हिमालयी पश्चिम बंगाल और सिक्किम

6. गंगीय पश्चिम बंगाल

7. ओडिशा

8. झारखंड

9. बिहार

10. पूर्वी उत्तर प्रदेश

11. पश्चिम उत्तर प्रदेश

12. उत्तराखंड

13. हरियाणा, चंडीगढ़ और दिल्ली

14. पंजाब

15. हिमाचल प्रदेश

16. जम्मू और कश्मीर और लद्दाख

17. पश्चिम राजस्थान

18. पूर्वी राजस्थान

19. पश्चिम मध्य प्रदेश

20. पूर्वी मध्य प्रदेश

21. गुजरात

22. सौराष्ट्र

23. कोंकण और गोवा

24. मध्य महाराष्ट्र

25. मराठवाड़ा

26. विदर्भ

27. छत्तीसगढ़

28. तटीय आंध्र प्रदेश और यनम

29. तेलंगाना

30. रायलसीमा

31. तमिलनाडु, पुडुचेरी और कराईकल

32. तटीय कर्नाटक

33. आंतरिक उत्तरी कर्नाटक

34. आंतरिक दक्षिणी कर्नाटक

35. केरल और माहे

36. लक्षद्वीप



1. Andaman & Nicobar Islands

2. Arunachal Pradesh

3. Assam & Meghalaya

4. Nagaland, Manipur, Mizoram & Tripura

5. Sub-Himalayan West Bengal & Sikkim

6. Gangetic West Bengal

7. Odisha

8. Jharkhand

9. Bihar

10. East Uttar Pradesh

11. West Uttar Pradesh

12. Uttarakhand

13. Haryana, Chandigarh & Delhi

14. Punjab

15. Himachal Pradesh

16. Jammu & Kashmir and Ladakh

17. West Rajasthan

18. East Rajasthan

19. West Madhya Pradesh

20. East Madhya Pradesh

21. Gujarat

22. Saurashtra

23. Konkan & Goa

24. Madhya Maharashtra

25. Marathwada

26. Vidarbha

27. Chhattisgarh

28. Coastal Andhra Pradesh & Yanam

29. Telangana

30. Rayalaseema

31. Tamilnadu, Puducherry & Karaikal

32. Coastal Karnataka

33. North Interior Karnataka

34. South Interior Karnataka

35. Kerala & Mahe

36. Lakshadweep

SPATIAL DISTRIBUTION (% of Stations reporting)

% Stations	Category	% Stations	Category
76-100	Widespread (WS/Most Places)	26-50	Scattered (SCT/A Few Places)
51-75	Fairly Widespread (FWS/Many Places)	1-25	Isolated (ISOL)



Fog



Heavy Snow



Cold Wave



Heavy Rain



Dust Storm



Cold Day



Very Heavy Rain



Heat Wave



Ground Frost



Extremely Heavy Rain



Warm Night



Thunder & Lightning



Hot Day



Hailstorm



Hot & Humid



Dust Raising Winds



Strong Surface Winds

COLOUR CODED WARNING

No Warning (No Action)

Watch (Be Aware)

Alert (Be Prepared To Take Action)

Warning (Take Action)

Probabilistic Forecast

Terms	Probability of Occurrence (%)
Unlikely	< 25
Likely	25 - 50
Very Likely	50 - 75
Most Likely	> 75

* Red colour warning does not mean "Red Alert", Red colour warning means "Take Action".

Forecast and Warning for any day is valid from 0830 hours IST of day till 0830 hours IST of next day.

For more details, kindly visit <https://mausam.imd.gov.in> or contact: 011-2434-4599

(Service to the Nation since 1875)

DEFINITION/CRITERIA

Rain/ Snow *

Heavy: 64.5 to 115.5 mm/cm *
Very Heavy: 115.6 to 204.4 mm/cm *
Extremely Heavy: > 204.4 mm/cm *

Heat Wave

When maximum temperature of a station reaches $\geq 40^{\circ}\text{C}$ for plains and $\geq 30^{\circ}\text{C}$ for hilly regions
(a) Based on Departure from normal

Heat Wave: Maximum Temperature Departure from normal 4.5°C to 6.4°C .

Severe Heat Wave: Maximum Temperature Departure from normal $\geq 6.5^{\circ}\text{C}$

(b). Based on Actual maximum temperature

Heat Wave: When actual maximum temperature $\geq 45^{\circ}\text{C}$.

Severe Heat Wave: When actual maximum temperature $\geq 47^{\circ}\text{C}$.

(c). Criteria for heat wave for coastal stations

When maximum temperature departure is $> 4.5^{\circ}\text{C}$ from normal. Heat Wave may be described provided maximum temperature $\geq 37^{\circ}\text{C}$.

Warm Night

When maximum temperature remains 40°C

Warm Night: When minimum temperature departure 4.5°C to 6.4°C .

Severe Warm Night: When minimum temperature departure $> 6.4^{\circ}\text{C}$.

Cold Wave

When minimum temperature of a station $\leq 10^{\circ}\text{C}$ for plains and $\leq 0^{\circ}\text{C}$ for hilly regions.

(a). Based on departure

Cold Wave: Minimum Temperature Departure from normal -4.5°C to -6.4°C .

Severe Cold Wave: Minimum Temperature Departure from normal $\leq -6.5^{\circ}\text{C}$

(b) Based on actual Minimum Temperature (for Plains only)

Cold Wave: When Minimum Temperature is $\leq 4.0^{\circ}\text{C}$

Severe Cold Wave: When Minimum Temperature is $\leq 2.0^{\circ}\text{C}$

(c) For Coastal Stations

When Minimum Temperature departure is $\leq -4.5^{\circ}\text{C}$ & actual Minimum Temperature is $\leq 15^{\circ}\text{C}$

Cold Day

When minimum temperature of a station $\leq 10^{\circ}\text{C}$ for plains and $\leq 0^{\circ}\text{C}$ for hilly regions

Based on departure

Cold Day: Maximum Temperature Departure from normal -4.5°C to -6.4°C .

Severe Cold Day: Maximum Temperature Departure from normal $\leq -6.5^{\circ}\text{C}$

Fog

Phenomenon of small droplets suspended in air and the horizontal visibility $< 1\text{km}$

Moderate Fog: When the visibility between 500-200 metres

Dense Fog: when the visibility between 50- 200 metres

Very Dense Fog: when the visibility < 50 metres

Thunderstorm

Sudden electrical discharges manifested by a flash of light (Lightning) and a sharp rumbling sound (thunder)

Dust/Sand Storm

An ensemble of particles of dust or sand energetically lifted to great heights by a strong and turbulent wind.

Frost

Ice deposits on ground

Air temperature $\leq 4^{\circ}\text{C}$ (over Plains)

Squall

A strong wind that rises suddenly, lasts for atleast 1 minute.

Moderate: Wind speed 52-61 kmph

Severe: Wind speed 62-67 kmph

Very Severe: Wind speed > 67 kmph

Sea State

Effect of various waves in the sea over specific area

Rough to very rough: Wind speed 41-62 kmph (22-33 knots) & Wave height 2.5-6 metre

High to very high: Wind speed 63-117 kmph (34-63 knots) & Wave height 6-14 metre

Phenomenal: Wind speed > 117 kmph (> 63 knots) & Wave height > 14 metre

Cyclone

Cyclonic Storm: Wind speed 62-87 kmph (34-47 knots)

Severe Cyclonic Storm: Wind speed 88-117 kmph (48-63 knots)

Very Severe Cyclonic Storm: Wind speed 118-165 kmph (64 - 89 knots)

Extremely Severe Cyclonic Storm: Wind speed 166-220 kmph (90 -119 knots)

Super Cyclone Storm: Wind speed > 220 kmph (> 119 knots)

* Red colour warning does not mean "Red Alert", Red colour warning means "Take Action".

Forecast and Warning for any day is valid from 0830 hours IST of day till 0830 hours IST of next day.

For more details, kindly visit <https://mausam.imd.gov.in> or contact: 011-2434-4599

(Service to the Nation since 1875)

Hot and Humid: When maximum temperatures remain 3°C above normal along with the above normal relative humidity.