



Government of India
Ministry of Earth Sciences
India Meteorological Department



Press Release

Date: 11th August, 2025

Time of Issue: 1400 hours IST

Subject: i) Isolated heavy to very heavy rainfall likely over Uttarakhand and Himachal Pradesh during next 7 days with isolated extremely heavy (≥ 21 cm) over Uttarakhand on 11th & 13th August, 2025

ii) Increase in rainfall activity over east central India and adjoining north peninsular India; with a fresh spell of heavy to very heavy rainfall over Madhya Pradesh, Vidarbha, Odisha, Chhattisgarh, Coastal Andhra Pradesh, Rayalaseema and Telangana during 13th to 17th August with extremely heavy falls over Telangana on 14th & 15th August.

iii) Isolated heavy to very heavy rainfall likely over Sub-Himalayan West Bengal & Sikkim, Arunachal Pradesh, Assam & Meghalaya during 11th-14th August with extremely heavy falls over Sub-Himalayan West Bengal & Sikkim on 11th & 12th and over Arunachal Pradesh & Meghalaya on 12th August.

Realised weather during past 24 hours till 0830 hours IST of today, the 11th August, 2025:

- ❖ **Heavy to very heavy rainfall with extremely heavy falls (≥ 21 cm)** has been recorded at isolated places over Uttarakhand and Sub-Himalayan West Bengal.
- ❖ **Heavy to very heavy rainfall (7-20 cm)** has been recorded at isolated places over West Uttar Pradesh, Jharkhand, Assam & Meghalaya, Rayalaseema; **Heavy rainfall (7-11 cm)** at isolated places over Jammu-Kashmir, East Uttar Pradesh, Punjab, Haryana, Arunachal Pradesh, Odisha, Bihar, Madhya Maharashtra, Madhya Pradesh, Gujarat Region, Telangana, Tamil Nadu, Karaikal and North Interior Karnataka.

For more details of realised weather, kindly refer Annexure I.

i. Weather Systems, Forecast and Warnings (refer to Annexure II & III):

- ❖ The western end of monsoon trough at mean sea level runs north of its normal position and eastern end runs near the foothills of the Himalayas at mean sea level.
- ❖ An **upper air cyclonic circulation** over north Coastal Andhra Pradesh & adjoining Telangana in lower & middle tropospheric levels titling southwards with height.
- ❖ An **upper air cyclonic circulation** lies over northwest Uttar Pradesh in lower tropospheric levels.
- ❖ An **upper air cyclonic circulation** lies over Kutch & neighbourhood in lower tropospheric levels.
- ❖ An **upper air cyclonic circulation** lies over northeast Assam in lower tropospheric levels.
- ❖ A **Western Disturbance seen** as a cyclonic circulation over north Pakistan & adjoining Jammu & Kashmir in lower & middle tropospheric levels.
- ❖ A **Low-Pressure area** is likely to form over northwest & adjoining westcentral Bay of Bengal around 13th August, 2025 and likely to become more marked during subsequent 2 days.

Under the influence of these systems, the following weather is likely:

Northwest India:

- ❖ **Extremely heavy rainfall** very likely at isolated places over Uttarakhand on 11th & 13th August.
- ❖ Isolated **heavy rainfall** likely over Jammu-Kashmir on during 13th-15th; Himachal Pradesh, Uttarakhand during 11th-17th; Haryana, Chandigarh on 11th & during 13th-15th; Uttar Pradesh during 11th-15th; East Rajasthan during 15th-17th August with **very heavy rainfall** over Himachal Pradesh during 11th-14th; Uttarakhand on during 12th, during 14th-17th; West Uttar Pradesh on 11th, 13th & 14th; East Uttar Pradesh on 13th & 14th August.

- ❖ Light/moderate rainfall at many places accompanied with thunderstorm & lightning likely over Himachal Pradesh on 10th August; Jammu-Kashmir-Ladakh-Gilgit-Baltistan-Muzaffarabad & Uttarakhand during next 7 days.

Northeast India:

- ❖ **Extremely heavy rainfall** very likely at isolated places over Arunachal Pradesh, Meghalaya on 12th August.
- ❖ Light/moderate rainfall at many places accompanied with thunderstorm, lightning and isolated **heavy rainfall** likely to continue over Arunachal Pradesh, Assam & Meghalaya, Nagaland, Manipur, Mizoram & Tripura during 11th-15th August with isolated **very heavy rainfall over Arunachal Pradesh and Assam & Meghalaya** on 11th August.
- ❖ Light/moderate rainfall at many places accompanied with thunderstorm & lightning likely during next 3 days.

South Peninsular India:

- ❖ **Extremely heavy rainfall** very likely at isolated places over Telangana on 14th & 15th August.
- ❖ Isolated **heavy rainfall** likely over Karnataka during 13th - 17th; Rayalaseema during 11th-15th; Coastal Andhra Pradesh & Yanam, Telangana during 11th-17th; Tamil Nadu, Puducherry & Karaikal during 11th-13th, Kerala on 12th, during 14th-17th August with isolated **very heavy rainfall over Coastal Andhra Pradesh & Yanam during 13th-15th, Rayalaseema on 13th & 14th; Telangana during 13th-17th August.**
- ❖ Strong surface winds (speed reaching 40-50 kmph) very likely over South Peninsular India during next 2 days.
- ❖ Light to moderate rainfall at most/many places accompanied with thunderstorm & lightning likely over, Rayalaseema, Coastal Andhra Pradesh & Yanam and Telangana during next 5 days.

East & Central India:

- ❖ **Extremely heavy rainfall** very likely at isolated places over Sub-Himalayan West Bengal & Sikkim on 11th & 12th August.
- ❖ Isolated **heavy rainfall** likely over West Madhya Pradesh on 11th, during 14th-17th; East Madhya Pradesh during 11th-17th; Vidarbha; Chhattisgarh during 12th-17th; Andaman & Nicobar Islands on 11th & 12th; Sub-Himalayan West Bengal & Sikkim on 13th & 14th; Bihar during 11th-14th; Odisha on 14th & 15th August **with isolated very heavy rainfall over West Madhya Pradesh on 17th; Vidarbha, Chhattisgarh on 13th & 14th, Sub-Himalayan West Bengal & Sikkim on 13th; Bihar during 11th-13th and Odisha during 12th & 13th August.**
- ❖ Light to moderate rainfall at most/many places accompanied with thunderstorm & lightning likely over the region during next 5 days with possibility of thundersquall (speed 50-60 kmph) very likely over Andaman & Nicobar Islands during 11th -13th August.

West India:

- ❖ Isolated **heavy rainfall** likely over Madhya Maharashtra during 13th-17th; Konkan & Goa during 12th-17th; gr on 12th, Marathwada on 15th August **with isolated very heavy rainfall over Konkan & Goa, ghat areas of Madhya Maharashtra on 16th & 17th August.**
- ❖ Light to moderate rainfall at many/some places very likely over the region during next 7 days.

Fishermen warning:

Fishermen are advised to avoid venturing into the following from 11th August to 16th August 2025 to the following Areas:

Arabian Sea: Some parts of southwest & westcentral Arabian Sea during 11th to 13th August, most parts of westcentral Arabian Sea & adjoining some parts of eastcentral Arabian Sea, southern parts of north Arabian Sea, and entire Konkan & Goa coasts during 13th to 16th August, over few parts of Comorin areas; along and off the Somalia coast and adjoining sea areas, along and off Oman coast during 11th to 16th, along and off north Gujarat coast, adjoining northeast Arabian Sea during 12th to 14th August; along and off south Konkan & Goa on 12th August.

Bay of Bengal: Along and off Sri Lanka coast, over Gulf of Mannar and along and off south Tamil Nadu coast during 11th to 16th August, over entire southwest Bay of Bengal during 12th to 16th August, parts of southeast and westcentral Bay of Bengal adjoining to southwest Bay of Bengal during 12th to 16th August, along and off Andhra Pradesh coast adjoining westcentral Bay of Bengal on 13th to 15th August; along and off north Andhra Pradesh on 15th August, Odisha coasts during 13th to 16th; over Andaman Sea during 11th to 15th August.

ii. Weather conditions and forecast over Delhi/NCR during 11th to 13th August, 2025 (Annexure IV)

For more details, kindly refer National Weather Bulletin:

https://mausam.imd.gov.in/responsive/all_india_forecast_bulletin.php

For District wise warnings refer: <https://mausam.imd.gov.in/responsive/districtWiseWarningGIS.php>

Rainfall recorded (in cm) during past 24 hours till 0830 hours IST of today, the 11th August:

Sub Himalayan West Bengal & Sikkim: Newlands Tea Garden (dist Alipurduar) 29; Kumargram Tea Estate (dist Alipurduar) 25; Sankos Tea Estate (dist Alipurduar) 21; Sankosh (dist Cooch Behar) 20; Kumargram (dist Alipurduar) 18; Bhatkawa Tea Estate (dist Jalpaiguri), Dima Tea Estate (dist Alipurduar), Raidak Tea Estate (dist Alipurduar) 17 Each; Aryaman Tea Estate (dist Alipurduar), Dalgaon Tea Estate (dist Alipurduar) 16 Each; Mangan (dist Mangan) 15; Alipurduar PTO (dist Alipurduar) 14; Gopalpur Tea Estate (dist Alipurduar), Majherdabri Tea Garden (dist Alipurduar) 13 Each; Mekhliganj (dist Cooch Behar) 12; Denguajhar Tea Garden (dist Jalpaiguri), Patkapara Tea Estate (dist Alipurduar) 11 Each; Chengmari/Diana (dist Jalpaiguri), Palashbari Tea Estate (dist Jalpaiguri) 10 Each; Domohani (dist Jalpaiguri), Namthang (dist Namchi), Nh31 Bridge (dist Jalpaiguri), Chepan (dist Alipurduar), Jiti T.e. (dist Jalpaiguri), Maynaguri College (dist Jalpaiguri) 9 Each; Buxaduar (dist Alipurduar), Falakata (dist Alipurduar), Dharala Valley Tea Esta (dist Jalpaiguri), Gairkata Tea Estate (dist Jalpaiguri), Gandrapara Tea Garden (dist Jalpaiguri), Subhasini Tea Estate (dist Alipurduar) 8 Each; Sankalan (dist Mangan), Barobhisha (dist Alipurduar), Mathabhanga (dist Cooch Behar), Cooch Behar (dist Cooch Behar), Jalpaiguri (dist Jalpaiguri), Singhik (dist Mangan), Suryasen Mahavidyalaya (dist Darjeeling), Hilla T.e. (dist Jalpaiguri), Moraghat Tea Estate (dist Jalpaiguri), Siliguri PTO (dist Darjeeling), Beech Tea Garden (dist Alipurduar) 7 Each;

Uttarakhand: Hardwar (dist Hardwar) 24; Roshnabad (dist Hardwar) 14; Bhagwanpur (dist Hardwar) 12; Sama (dist Bageshwar) 11; Loharkhet (dist Bageshwar) 9; Roorkee (dist Hardwar), Jollygrant (dist Dehradun), Didihat (dist Pithoragarh) 8 Each; Karnaprayag (dist Chamoli), Dehra Dun (dist Dehradun), Nainital (dist Nainital) 7 Each;

Assam & Meghalaya: Mawsynram (dist East Khasi Hills) 15; Cherrapunji (dist East Khasi Hills), Cherrapunji(rkm) (dist East Khasi Hills) 14 Each; Beki Mathungari (dist Barpeta) 13; Kokrajhar (dist Kokrajhar), Mushalpur AWS (dist Baksa), Hazuah (dist Barpeta) 9 Each; Karimganj (dist Sribhumi) 7;

Jharkhand: Maheshpur (dist Pakur) 15, Jamtara (dist Jamtara) 10, Garu (dist Latehar) Shikari (dist Dumka) 9,

Odisha: Daitari (dist Keonjhar) 15, Tikabali (dist Kandhamal) 9, Jaipur (dist Balasore) 8,

West Uttar Pradesh: Saharanpur (dist Saharanpur) 14;

Rajalaseema: Nandikotkur (dist Nandyal) 13; Jupadu Bungalow (dist Nandyal) 9; Nagari (dist Chittoor), Aspari (dist Kurnool), Orvakal (dist Kurnool), Dharmavaram (dist Sri Sathyasai District) 7 Each;

Tamil Nadu, Puducherry & Karaikal: Karaikal (dist Karaikal) 11; Manalmedu (dist Mayiladuthurai) 10; Uthukottai (dist Tiruvallur), Thaluthalai (dist Perambalur) 9 Each; Kollidam (dist Mayiladuthurai), Thanjai Papanasam (dist Thanjavur), Thiruthuraipoondi (dist Tiruvarur), Pullambadi (dist Trichy) 8 Each; K.m.koil (dist Cuddalore), Harur (dist Dharmapuri), Uthiramerur (dist Kancheepuram), Tiruvarur (dist Tiruvarur), Tirupattur (dist Tirupattur), Panruti (dist Cuddalore), Tiruvarur AWS (dist Tiruvarur), Bhuvanagiri (dist Cuddalore), Thalaigayyer (dist Nagapattinam), Velankanni (dist Nagapattinam), Devimangalam (dist Trichy) 7 Each;

Haryana: Chhachhrauli (dist Yamuna Nagar) 11; Dadupur (dist Yamuna Nagar) 10; Jagadhari (dist Yamuna Nagar) 9;

Bihar: Sheohar (dist Sheohar) 11, Kauwakol (dist Nawada) 8, Mairwa (dist Siwan) 7, Barhat (dist Jamui) 7,

East Madhya Pradesh: Patharia (dist Damoh) 10; Khajuraho AP (dist Chhatrapur) 8; Batiyagarh (dist Damoh) 7;

Jammu: Kathua ARG (dist Kathua), Kathua (dist Kathua) 9 Each;

Gujarat Region: Pardi (dist Valsad) 9; Valsad (dist Valsad), Umergam (dist Valsad) 7 Each;

Telangana: Alampur (dist Jogulamba Gadwal) 9; Kosgi (dist Narayanpet), Bomraspeta (dist Vikarabad) 8 Each; Ghatkesar AP (dist Rangareddy) 7;

West Madhya Pradesh: Goharganj (dist Raisen) 8;

Madhya Maharashtra: Karjat (dist Ahilyanagar) 8;

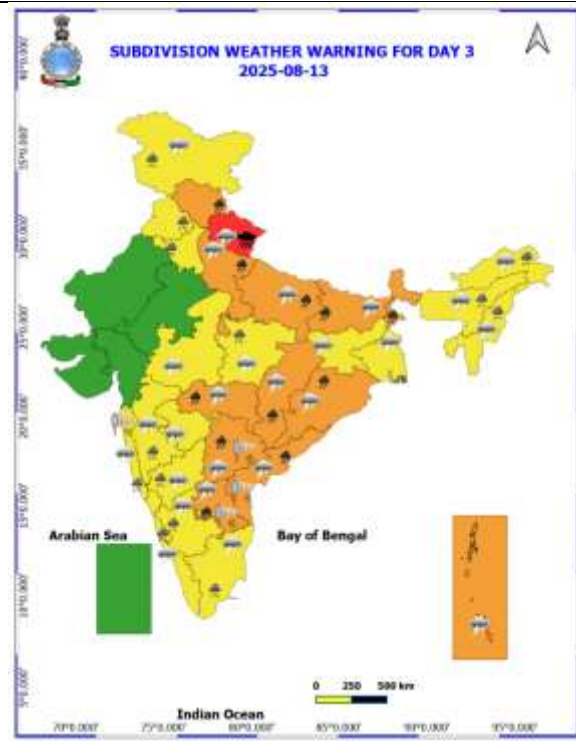
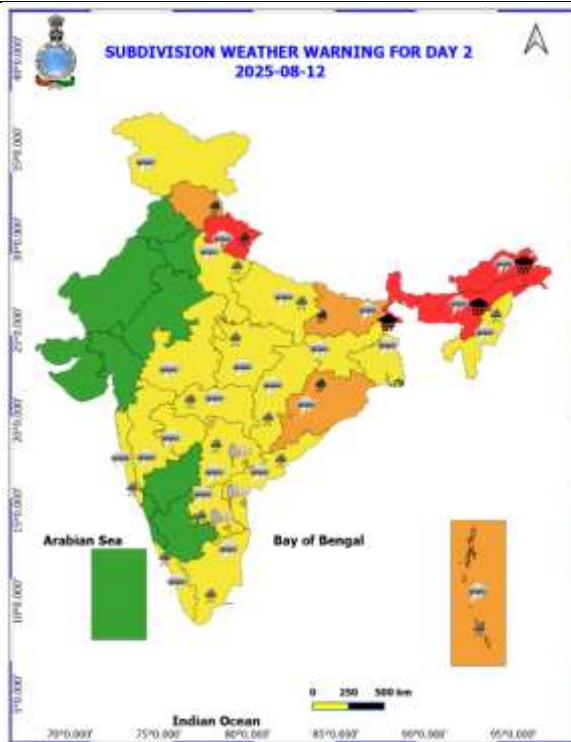
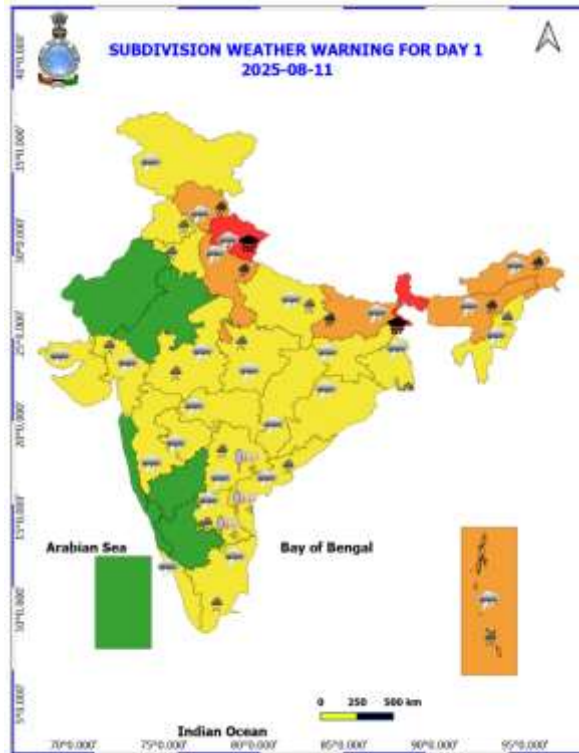
Konkan: Savarde-arg (dist Ratnagiri) 7;

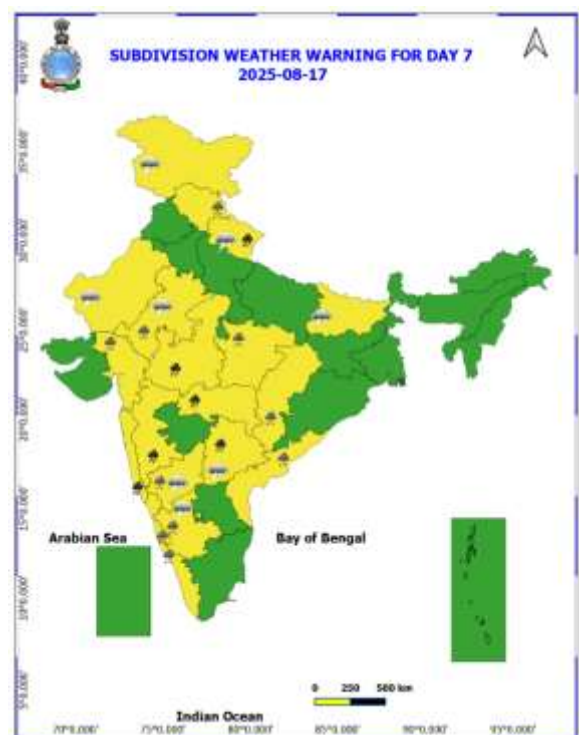
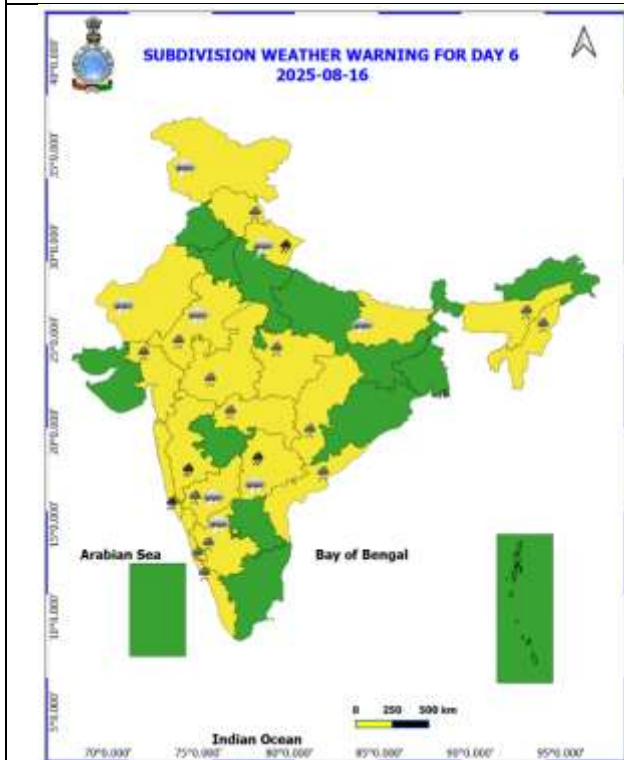
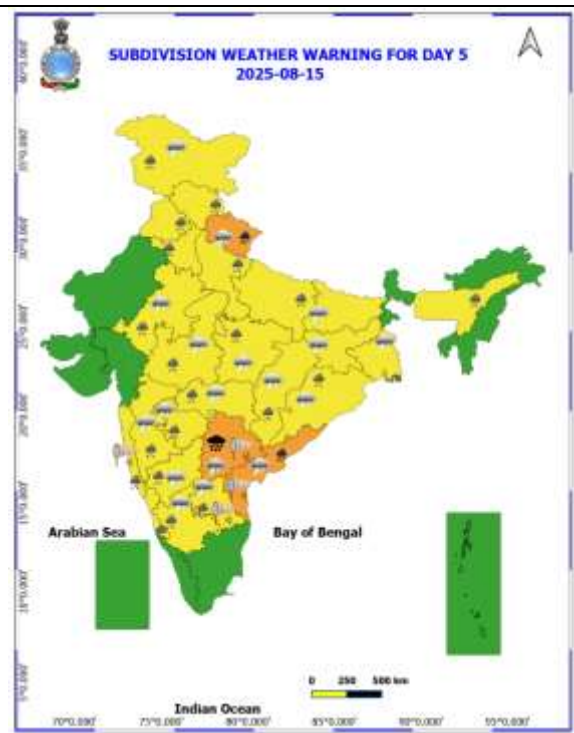
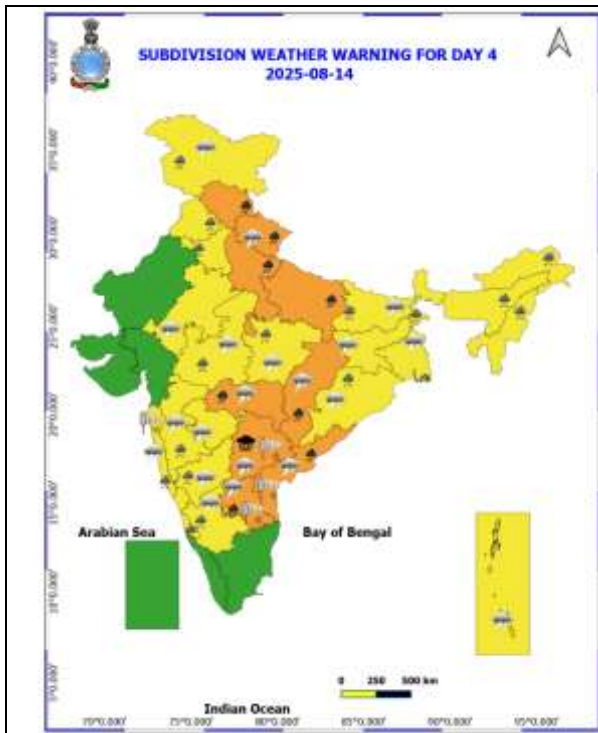
Punjab: Ranjit Sagar Dam Site (dist Pathankot), Madhopur (dist Pathankot) 7 Each;

East Uttar Pradesh: Ballia (dist Ballia), Birdghat (dist Gorakhpur) 7 Each.

Table-1								
7 Days Rainfall Forecast								
S.No.	Subdivision	11- Aug	12- Aug	13- Aug	14- Aug	15- Aug	16- Aug	17- Aug
		Day 1	Day 2	Day 3	Day 4	Day 5	Day 6	Day 7
1	ANDAMAN & NICOBAR ISLANDS	WS	WS	WS	WS	WS	WS	WS
2	ARUNACHAL PRADESH	WS	WS	FWS	FWS	SCT	SCT	SCT
3	ASSAM & MEHGHALAYA	WS	WS	WS	FWS	FWS	FWS	FWS
4	NAGALAND, MANIPUR, MIZORAM AND TRIPURA	FWS	WS	FWS	FWS	FWS	FWS	SCT
5	SUB HIMALAYAN WEST BENGAL & SIKKIM	WS	WS	WS	FWS	FWS	FWS	WS
6	GANGETIC WEST BENGAL	SCT	FWS	FWS	WS	WS	FWS	FWS
7	ODISHA	SCT	FWS	WS	FWS	SCT	SCT	SCT
8	JHARKHAND	SCT	FWS	WS	FWS	FWS	FWS	WS
9	BIHAR	FWS	WS	FWS	SCT	SCT	SCT	SCT
10	EAST UTTAR PRADESH	FWS	FWS	WS	FWS	SCT	SCT	SCT
11	WEST UTTAR PRADESH	SCT	SCT	FWS	WS	FWS	SCT	SCT
12	UTTARAKHAND	WS	WS	WS	WS	WS	WS	WS
13	HARYANA, CHANDIGARH & DELHI	SCT	ISOL	SCT	FWS	FWS	SCT	FWS
14	PUNJAB	SCT	ISOL	SCT	FWS	FWS	SCT	SCT
15	HIMACHAL PRADESH	WS	WS	WS	WS	WS	FWS	FWS
16	JAMMU AND KASHMIR AND LADAKH	SCT	SCT	FWS	WS	WS	SCT	SCT
17	WEST RAJASTHAN	ISOL	ISOL	ISOL	ISOL	ISOL	ISOL	ISOL
18	EAST RAJASTHAN	ISOL	ISOL	ISOL	SCT	SCT	SCT	SCT
19	WEST MADHYA PRADESH	SCT	SCT	FWS	FWS	WS	WS	WS
20	EAST MADHYA PRADESH	FWS	FWS	WS	WS	WS	WS	WS
21	GUJRAT REGION	SCT	SCT	SCT	SCT	SCT	FWS	FWS
22	SAURASHTRA & KUTCH	SCT	SCT	SCT	SCT	SCT	FWS	FWS
23	KONKAN & GOA	FWS	WS	WS	WS	WS	WS	WS
24	MADHYA MAHARASHTRA	ISOL	ISOL	SCT	SCT	SCT	SCT	SCT
25	MARATHWADA	ISOL	ISOL	ISOL	SCT	SCT	SCT	SCT
26	VIDARBHA	SCT	FWS	WS	WS	WS	WS	WS
27	CHHATTISGARH	SCT	FWS	WS	WS	WS	WS	WS
28	COASTAL ANDHRA PRADESH	SCT	FWS	FWS	WS	WS	FWS	SCT
29	TELANGANA	WS	WS	WS	WS	WS	WS	WS
30	RAYALASEEMA	FWS	FWS	FWS	FWS	FWS	SCT	SCT
31	TAMILNADU & PUDUCHERRY	SCT	SCT	SCT	ISOL	ISOL	ISOL	ISOL
32	COSTAL KARNATAKA	WS	WS	WS	WS	WS	WS	WS
33	NORTH INTERIOR KARNATAKA	FWS	FWS	WS	WS	WS	WS	WS
34	SOUTH INTERIOR KARNATAKA	FWS	FWS	WS	WS	FWS	FWS	FWS
35	KERALA AND MAHE	WS	WS	WS	WS	WS	WS	WS
36	LAKSHADWEEP	FWS	FWS	FWS	FWS	FWS	WS	WS

- As the lead period increases forecast accuracy decrease.





- Action may be taken based on ORANGE AND REDCOLOUR warnings.
- Vulnerable regions likely urban and hilly areas action may be initiated for heavy rainfall warning.
- As the lead period increases forecast accuracy decreases.

Detailed districtwise Multi Hazard weather warning for next five days available at <https://mausam.imd.gov.in/responsive/districtWiseWarningGIS.php>

Weather forecast over Delhi/NCR during 11th August to 14th August 2025**Past Weather:**

There has been no large change in minimum and appreciable rise maximum temperatures in past 24 hours over Delhi during the past 24 hours. The minimum temperatures are in the range of 24-26°C and maximum temperatures were in the range of 34-36°C. The minimum temperatures are near normal and maximum temperatures were near normal over Delhi. South westerly winds prevailed with wind speed upto 22 kmph in past 24 hours over Delhi. No significant rainfall has been recorded during past 24 hrs over Delhi. Partly cloudy sky conditions with a wind speed of upto 10-15 kmph from the southwest direction prevailed over the region in the forenoon today.

Weather Forecast:

11.08.2025: Partly cloudy sky. Possibility of one or two spells of very light to light rain/thundershowers towards afternoon/evening. The maximum temperatures over Delhi are likely to be in the range of 34 to 36°C. The maximum temperature will be near normal. The predominant surface wind will likely be from the northwest direction with a wind speed of upto 10-15 kmph during the afternoon hours. The wind speed will likely to be same upto 10-15 kmph from the south direction during the evening and night.

12.08.2025: Partly cloudy sky. Possibility of very light to light rain/ thundershowers. The maximum and minimum temperatures over Delhi are likely to be in the range of 32 to 35°C and 24 to 26°C respectively. The minimum temperature will be below normal up to 1 to 3°C and the maximum temperature will be near normal. The predominant surface wind will likely to be from the west direction with a wind speed of upto 10-15 kmph during morning hours. The predominant surface wind will likely to be from the northwest direction with a wind speed of 10-15 kmph during afternoon hours. The wind speed will decrease to 05-10 kmph from the southeast direction during evening and night.

13.08.2025: Generally cloudy sky. One or two spells of light to moderate rain/ thundershowers with higher probability during evening/night hours. The maximum and minimum temperatures over Delhi are likely to be in the range of 33 to 35°C and 23 to 25°C respectively. The minimum temperature will be below normal up to 2 to 4°C and the maximum temperature will be near normal. The predominant surface wind will likely to be from the west direction with a wind speed of upto 10-15 kmph during morning hours. The predominant surface wind will likely to be from the northwest direction with a wind speed of 10-15 kmph during afternoon hours. The wind speed will remain same upto 10-15 kmph from the southeast direction during evening and night.

14.08.2025: Generally cloudy sky. A few spells of light to moderate rain/ thundershowers with higher probability during morning hours. The maximum and minimum temperatures over Delhi are likely to be in the range of 31 to 33°C and 22 to 24°C respectively. The minimum temperature will be below normal up to 3 to 5°C and the maximum temperature will be below normal upto 1 to 3°C. The predominant surface wind will likely to be from the east direction with a wind speed of 10-15 kmph during morning hours. The wind speed will remain same upto 10-15 kmph from the north direction in the afternoon, evening and night.

Impact & Action Suggested due to

- ❖ **Extremely heavy rainfall** very likely at isolated places over Uttarakhand on 11th & 13th; Sub-Himalayan West Bengal & Sikkim on 11th & 12th; Arunachal Pradesh, Meghalaya on 12th and Telangana on 14th & 15th August
- ❖ **Isolated very heavy rainfall** over Himachal Pradesh during 11th-14th; Uttarakhand on during 12th, during 14th-17th; West Uttar Pradesh on 11th, 13th & 14th; East Uttar Pradesh, Rayalaseema, Vidarbha, Chhattisgarh on 13th & 14th; Arunachal Pradesh and Assam & Meghalaya on 11th; Coastal Andhra Pradesh & Yanam during 13th-15th, Telangana during 13th-17th; West Madhya Pradesh on 17th; Sub-Himalayan West Bengal & Sikkim on 13th; Bihar during 11th-13th, Odisha during 12th & 13th; Konkan & Goa, ghat areas of Madhya Maharashtra on 16th & 17th August.

Impact Expected

- Localized Flooding of roads, water logging in low lying areas and closure of underpasses mainly in urban areas of the above region.
- Occasional reduction in visibility due to heavy rainfall.
- Disruption of traffic in major cities due to water logging in roads leading to increased travel time.
- Minor damage to kutch roads.
- Possibilities of damage to vulnerable structure.
- Localized Landslides/Mudslides/landslips/mudslips/landsinks/mudsinks.
- Damage to horticulture and standing crops in some areas due to inundation.
- It may lead to riverine flooding in some river catchments (for riverine flooding please visit Web page of CWC)

Action Suggested

- Check for traffic congestion on your route before leaving for your destination.
- Follow any traffic advisories that are issued in this regard.
- Avoid going to areas that face the water logging problems often.
- Avoid staying in vulnerable structure.

Agromet advisories for likely impact of Heavy / Heavy to Very Heavy Rainfall

- In **Uttarakhand**, make necessary arrangements to drain out excess water from the fields of already sown / transplanted rice, sugarcane, maize, black gram, green gram, groundnut, pigeon pea, finger millet, soybean and vegetables in **Bhabar and Terai Zone**; and from barnyard millet, finger millet, green gram and black gram in **Sub Humid Sub Tropic Zone**. In **Hill Zone**, strengthen the bunds to prevent surface runoff of water. Postpone sowing of vegetable pea till soil attains optimum moisture level. Maintain proper drainage channels in vegetable and crop fields. Undertake harvesting of matured capsicum fruits. Postpone sowing of vegetable pea until the soil attains optimum moisture, especially under excessive wet soil conditions.
- In **Himachal Pradesh**, provide proper drainage channels in maize, ginger, turmeric and vegetable fields in **Mid Hills Sub Humid Zone**; and rice, maize and vegetable fields in **Sub Montane and Low Hills Sub Tropical Zone**. In **High Hills Sub Temperate Wet Zone**, undertake harvesting of ripened tomato and cover the cauliflower nursery with plastic sheets to prevent damage from heavy rainfall.
- In **West Uttar Pradesh**, maintain proper drainage in fields of rice, pigeon pea, sugarcane and vegetable crops in **South Western Semi Arid Zone**.
- In **Bihar**, make provisions to drain out excess water from standing crops such as maize, nurseries of onion, chilli, and cauliflower in **North West Alluvial Plain Zone**; maize, finger millet, ragi, kodo, sava, china etc. in **North East Alluvial Zone**.
- In **Sub-Himalayan West Bengal**, make provision to drain out excess water from rice, ginger, vegetable fields and fruit orchards in **Hill Zone** and *aman* paddy and vegetable fields in **Terai Zone**. Cover the chilli seedlings with plastic to protect them from heavy rains in **Terai Zone**.
- In **Madhya Pradesh**, provide adequate drainage in the fields of maize, soybean, blackgram, cotton, and pigeon pea in **Vindhyan Plateau Zone**; maize, soybean, cotton, sugarcane and vegetables in **Satpura Plateau Zone**; rice, soybean, maize, sugarcane and vegetables in **Central Narmada Valley Zone** and soybean, pigeon pea, cotton and vegetables in **Nimar Valley Zone**.

- In **Arunachal Pradesh**, ensure proper drainage in rice, maize, finger millet, soybean, vegetables, and fruit orchards to avoid waterlogging. Provide strong support to fruit-bearing plants to prevent them from bending or breaking during heavy rains.
- In **Assam**, to prevent waterlogging, ensure proper drainage in *Sali* rice, green gram and pigeon pea fields and banana orchards in **Lower Brahmaputra Valley Zone**; *Sali* rice and sugarcane fields in **North Bank Plain Zone** and *Sali* rice fields in **Upper Brahmaputra Valley Zone**.
- In **Meghalaya**, ensure proper drainage in rice, maize, turmeric, chilli, okra and bitter gourd fields to prevent waterlogging. Provide staking/support to tall and fragile crops like banana, papaya, bottle gourd etc. to prevent lodging.
- In **Tamil Nadu**, ensure proper drainage in sorghum fields to prevent waterlogging, especially in heavy soils and low-lying areas. Ensure proper drainage around the coconut plants to avoid root rot.
- In **Telangana**, drain out excess water from rice nurseries and recently transplanted rice as well as from fields of cotton, maize, red gram, soybean, sugarcane, and vegetables.

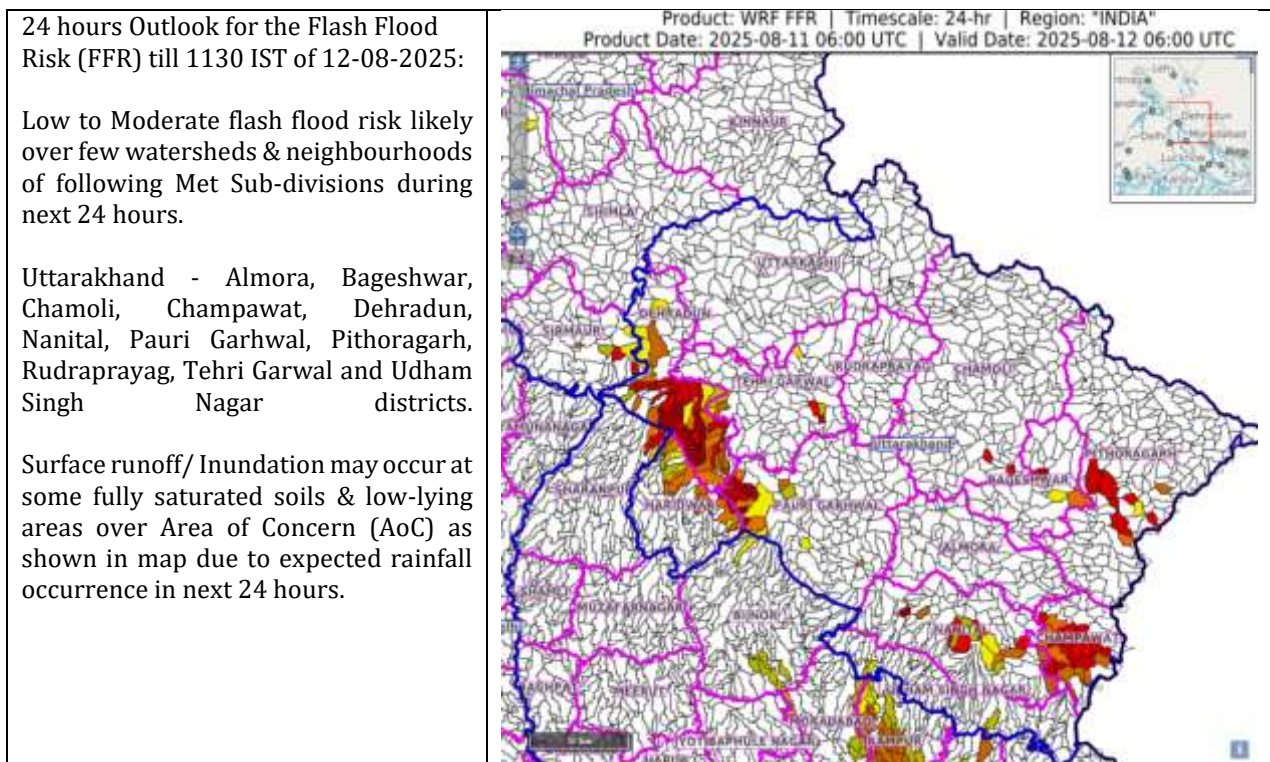
Livestock / Fishery

- Keep the animals inside the shed during heavy rainfall and provide them balanced feed.
- Store feed and fodder in a safe place to prevent spoilage.
- Construct an outlet with proper netting around the ponds to drain out excess water, thereby preventing fish from escaping in case of overflow.

Agromet advisories for likely impact of Thunderstorm / Gusty Winds / Squally Winds

- Provide mechanical support to horticultural crops and staking or support to vegetables and young fruit plants / fruit-bearing plants to avoid lodging due to strong winds.

Flash flood guidance:

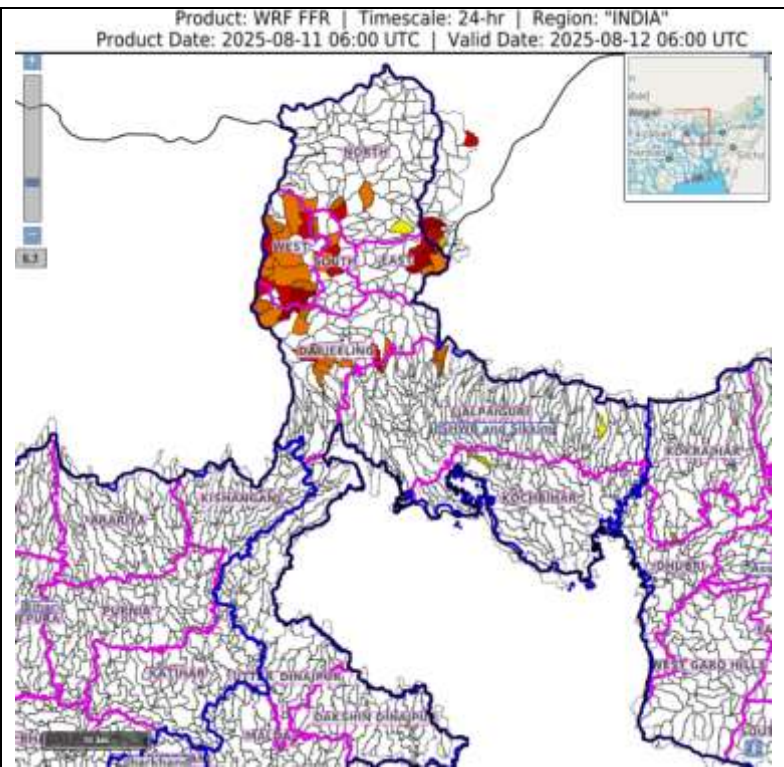


24 hours Outlook for the Flash Flood Risk (FFR) till 1130 IST of 12-08-2025 :

Low to Moderate flash flood risk likely over few watersheds & neighbourhoods of following Met Sub-divisions during next 24 hours.

Sub-Himalayan West Bengal & Sikkim - East Sikkim, North Sikkim, South Sikkim, West Sikkim, Darjeeling, Jalpaiguri districts.

Surface runoff/ Inundation may occur at some fully saturated soils & low-lying areas over Area of Concern (AoC) as shown in map due to expected rainfall occurrence in next 24 hours.

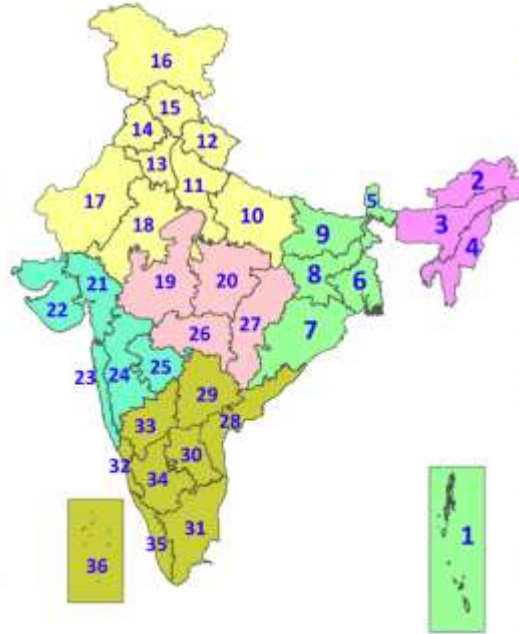


Legends & abbreviations:

- ❖ **Heavy Rain:**64.5-115.5mm; **Very Heavy Rain:**115.6-204.4mm; **Extremely Heavy Rain:** >204.4mm.
- ❖ **Obsy:** Observatory; Automatic Weather Station; **ARG:** Automatic Rain Gauge; **dist:** District; **NH:** National Highway; **KVK:** Krishi Vigyan Kendra; **DVC:** Damodar Valley Corporation; **PTO:** Part Time Office, **Aero:** Aerodrome, **IAF:** Indian Air Force.
- ❖ **Region wise classification of meteorological Sub-Divisions:**
 - **Northwest India:** Western Himalayan Region (Jammu-Kashmir-Ladakh-Gilgit-Baltistan-Muzaffarabad, Himachal Pradesh and Uttarakhand); Punjab, Haryana-Chandigarh-Delhi; West Uttar Pradesh, East Uttar Pradesh, West Rajasthan and East Rajasthan.
 - **Central India:** West Madhya Pradesh, East Madhya Pradesh, Vidarbha and Chhattisgarh.
 - **East India:** Bihar, Jharkhand, Sub-Himalayan West Bengal & Sikkim; Gangetic West Bengal, Odisha and Andaman & Nicobar Islands.
 - **Northeast India:** Arunachal Pradesh, Assam & Meghalaya and Nagaland, Manipur, Mizoram & Tripura.
 - **West India:** Gujarat Region, Saurashtra & Kutch, Konkan & Goa, Madhya Maharashtra and Marathawada.
 - **South India:** Coastal Andhra Pradesh & Yanam, Telangana, Rayalaseema, Coastal Karnataka, North Interior Karnataka, South Interior Karnataka, Kerala & Mahe, Tamil Nadu, Puducherry & Karaikal and Lakshadweep.

LEGENDS

1. अंडमान और निकोबार द्वीपसमूह
2. अरुणाचल प्रदेश
3. असम और मेघालय
4. नागालैंड, मणिपुर, मिजोरम और त्रिपुरा
5. उप-हिमालयी पश्चिम बंगाल और सिक्किम
6. गंगीय पश्चिम बंगाल
7. ओडिशा
8. झारखंड
9. बिहार
10. पूर्वी उत्तर प्रदेश
11. पश्चिम उत्तर प्रदेश
12. उत्तराखंड
13. हरियाणा, चंडीगढ़ और दिल्ली
14. पंजाब
15. हिमाचल प्रदेश
16. जम्मू और कश्मीर और लद्दाख
17. पश्चिम राजस्थान
18. पूर्वी राजस्थान
19. पश्चिम मध्य प्रदेश
20. पूर्वी मध्य प्रदेश
21. गुजरात
22. सौराष्ट्र
23. कोंकण और गोवा
24. मध्य महाराष्ट्र
25. मराठवाड़ा
26. विदर्भ
27. छत्तीसगढ़
28. तटीय आंध्र प्रदेश और यनम
29. तेलंगाना
30. रायलसीमा
31. तमिलनाडु, पुडुचेरी और कराईकल
32. तटीय कर्नाटक
33. आंतरिक उत्तरी कर्नाटक
34. आंतरिक दक्षिणी कर्नाटक
35. केरल और माहे
36. लक्षद्वीप



1. Andaman & Nicobar Islands
2. Arunachal Pradesh
3. Assam & Meghalaya
4. Nagaland, Manipur, Mizoram & Tripura
5. Sub-Himalayan West Bengal & Sikkim
6. Gangetic West Bengal
7. Odisha
8. Jharkhand
9. Bihar
10. East Uttar Pradesh
11. West Uttar Pradesh
12. Uttarakhand
13. Haryana, Chandigarh & Delhi
14. Punjab
15. Himachal Pradesh
16. Jammu & Kashmir and Ladakh
17. West Rajasthan
18. East Rajasthan
19. West Madhya Pradesh
20. East Madhya Pradesh
21. Gujarat
22. Saurashtra
23. Konkan & Goa
24. Madhya Maharashtra
25. Marathwada
26. Vidarbha
27. Chhattisgarh
28. Coastal Andhra Pradesh & Yanam
29. Telangana
30. Rayalaseema
31. Tamilnadu, Puducherry & Karaikal
32. Coastal Karnataka
33. North Interior Karnataka
34. South Interior Karnataka
35. Kerala & Mahe
36. Lakshadweep

SPATIAL DISTRIBUTION (% of Stations reporting)

% Stations	Category	% Stations	Category
76-100	Widespread (WS/Most Places)	26-50	Scattered (SCT/A Few Places)
51-75	Fairly Widespread (FWS/Many Places)	1-25	Isolated (ISOL)

- | | | |
|----------------------|----------------------|--------------|
| Fog | Heavy Snow | Cold Wave |
| Heavy Rain | Dust Storm | Cold Day |
| Very Heavy Rain | Heat Wave | Ground Frost |
| Extremely Heavy Rain | Warm Night | |
| Thunder & Lightning | Hot Day | |
| Hailstorm | Hot & Humid | |
| Dust Raising Winds | Strong Surface Winds | |

COLOUR CODED WARNING

No Warning (No Action)
Watch (Be Aware)
Alert (Be Prepared To Take Action)
Warning (Take Action)

Probabilistic Forecast

Terms	Probability of Occurrence (%)
Unlikely	< 25
Likely	25 - 50
Very Likely	50 - 75
Most Likely	> 75

* Red colour warning does not mean "Red Alert", Red colour warning means "Take Action".
Forecast and Warning for any day is valid from 0830 hours IST of day till 0830 hours IST of next day.
For more details, kindly visit <https://mausam.imd.gov.in> or contact: 011-2434-4599
(Service to the Nation since 1875)

DEFINITION/CRITERIA

Rain/ Snow *	<p>Heavy: 64.5 to 115.5 mm/cm *</p> <p>Very Heavy: 115.6 to 204.4 mm/cm*</p> <p>Extremely Heavy: > 204.4 mm/cm *</p>
Heat Wave	<p>When maximum temperature of a station reaches $\geq 40^{\circ}\text{C}$ for plains and $\geq 30^{\circ}\text{C}$ for hilly regions</p> <p>(a) Based on Departure from normal</p> <p>Heat Wave: Maximum Temperature Departure from normal 4.5°C to 6.4°C.</p> <p>Severe Heat Wave: Maximum Temperature Departure from normal $\geq 6.5^{\circ}\text{C}$</p> <p>(b) Based on Actual maximum temperature</p> <p>Heat Wave: When actual maximum temperature $\geq 45^{\circ}\text{C}$.</p> <p>Severe Heat Wave: When actual maximum temperature $\geq 47^{\circ}\text{C}$</p> <p>(c) Criteria for heat wave for coastal stations</p> <p>When maximum temperature departure is $>4.5^{\circ}\text{C}$ from normal. Heat Wave may be described provided maximum temperature $\geq 37^{\circ}\text{C}$.</p>
Warm Night	<p>When maximum temperature remains 40°C</p> <p>Warm Night: When minimum temperature departure 4.5°C to 6.4°C.</p> <p>Severe Warm Night: When minimum temperature departure $>6.4^{\circ}\text{C}$.</p>
Cold Wave	<p>When minimum temperature of a station $\leq 10^{\circ}\text{C}$ for plains and $\leq 0^{\circ}\text{C}$ for hilly regions.</p> <p>(a) Based on departure</p> <p>Cold Wave: Minimum Temperature Departure from normal -4.5°C to -6.4°C.</p> <p>Severe Cold Wave: Minimum Temperature Departure from normal $\leq -6.5^{\circ}\text{C}$</p> <p>(b) Based on actual Minimum Temperature (for Plains only)</p> <p>Cold Wave : When Minimum Temperature is $\leq 4.0^{\circ}\text{C}$</p> <p>Severe Cold Wave: When Minimum Temperature is $\leq 2.0^{\circ}\text{C}$</p> <p>(c) For Coastal Stations</p> <p>When Minimum Temperature departure is $\leq -4.5^{\circ}\text{C}$ & actual Minimum Temperature is $\leq 15^{\circ}\text{C}$</p>
Cold Day	<p>When minimum temperature of a station $\leq 10^{\circ}\text{C}$ for plains and $\leq 0^{\circ}\text{C}$ for hilly regions</p> <p>Based on departure</p> <p>Cold Day: Maximum Temperature Departure from normal -4.5°C to -6.4°C.</p> <p>Severe Cold Day: Maximum Temperature Departure from normal $\leq -6.5^{\circ}\text{C}$</p>
Fog	<p>Phenomenon of small droplets suspended in air and the horizontal visibility $< 1\text{km}$</p> <p>Moderate Fog: When the visibility between 500-200 metres</p> <p>Dense Fog: when the visibility between 50- 200 metres</p> <p>Very Dense Fog: when the visibility < 50 metres</p>
Thunderstorm	<p>Sudden electrical discharges manifested by a flash of light (Lightning) and a sharp rumbling sound (thunder)</p>
Dust/Sand Storm	<p>An ensemble of particles of dust or sand energetically lifted to great heights by a strong and turbulent wind.</p>
Frost	<p>Ice deposits on ground</p> <p>Air temperature $\leq 4^{\circ}\text{C}$ (over Plains)</p>
Squall	<p>A strong wind that rises suddenly, lasts for atleast 1 minute.</p> <p>Moderate: Wind speed 52-61 kmph</p> <p>Severe: Wind speed 62-67 kmph</p> <p>Very Severe: Wind speed >67 kmph</p>
Sea State	<p>Effect of various waves in the sea over specific area</p> <p>Rough to very rough: Wind speed 41-62 kmph (22-33 knots) & Wave height 2.5-6 metre</p> <p>High to very high: Wind speed 63-117 kmph (34-63 knots) & Wave height 6-14 metre</p> <p>Phenomenal: Wind speed >117 kmph (>63 knots) & Wave height >14 metre</p>
Cyclone	<p>Cyclonic Storm: Wind speed 62-67 kmph (34-47 knots)</p> <p>Severe Cyclonic Storm: Wind speed 88-117 kmph (48-63 knots)</p> <p>Very Severe Cyclonic Storm: Wind speed 118-165 kmph (64 - 89 knots)</p> <p>Extremely Severe Cyclonic Storm: Wind speed 166-220 kmph (90 -119 knots)</p> <p>Super Cyclone Storm: Wind speed >220 kmph (>119 knots)</p>

* Red colour warning does not mean "Red Alert", Red colour warning means "Take Action".
Forecast and Warning for any day is valid from 0830 hours IST of day till 0830 hours IST of next day.
For more details, kindly visit <https://mausam.imd.gov.in> or contact: 011-2434-4599
(Service to the Nation since 1875)

Hot and Humid: When maximum temperatures remain 3°C above normal along with the above normal relative humidity.