



Government of India
Ministry of Earth Sciences
India Meteorological Department



Press Release

Date: 18th August, 2025

Time of Issue: 1315 hours IST

Subject: i) Under the influence of Well marked Low-Pressure area over Bay of Bengal, extremely heavy rainfall likely over coastal Andhra Pradesh, south Chhattisgarh, south Odisha, Telangana, South Interior Karnataka on 18th; Konkan (including Mumbai) & Goa, Ghat area of Madhya Maharashtra and Coastal Karnataka on 18th & 19th; Gujarat state on 19th & 20th August.
ii) Monsoon is likely to be in active phase over south Peninsular and adjoining central India during next 3-4 days.

Realised weather during past 24 hours till 0830 hours IST of today, the 18th August, 2025:

- ❖ Heavy to very heavy rainfall with extremely heavy falls (≥ 21 cm) has been recorded at isolated places over Konkan, Coastal Karnataka and Telangana.
- ❖ Very heavy rainfall (12-20 cm) has been recorded at isolated places over Tamil Nadu, Coastal Andhra Pradesh, Kerala, Marathawada, Madhya Maharashtra, South Interior Karnataka and Odisha.
- ❖ Heavy rainfall (7-11 cm) has been recorded at isolated places over Himachal Pradesh, Uttarakhand, north Haryana, northwest Uttar Pradesh, Andaman Islands, Sub-Himalayan West Bengal, Chhattisgarh, North Interior Karnataka, Assam, Manipur, Bihar, West Madhya Pradesh, Goa and Saurashtra.

For more details of realised weather, kindly refer **Annexure I**.

i. Weather Systems, Forecast and Warnings (refer to Annexure II & III):

- ❖ The Monsoon trough is active and runs south of its normal position.
- ❖ The low-pressure area over west central and adjoining northwest Bay of Bengal off north Andhra Pradesh and south Odisha coasts intensified into a **well marked Low pressure area** over the same region at 0530 hrs IST and persisted over the same region at 0830 hrs IST of today, the 18th August 2025. It is likely to move west-northwestwards and concentrate into a depression during next 12-hours and cross south Odisha-north Andhra Pradesh coasts around forenoon of 19th August 2025.
- ❖ A **shear zone** runs roughly along Lat. 19°N over the Indian region at lower & middle tropospheric levels tilting southwestwards with height.
- ❖ A **Western Disturbance** as a trough in lower tropospheric westerlies runs roughly along Long. 65°E to the north of Lat. 30°N.

Under the influence of these systems, the following weather is likely:

West India:

- ❖ **Extremely heavy rainfall** very likely at isolated places over Konkan & Goa; Ghat areas of Madhya Maharashtra on 18th & 19th; Gujarat State on 19th & 20th August.
- ❖ Isolated to scattered **heavy to very heavy rainfall** likely over Madhya Maharashtra, Konkan (including Mumbai) & Goa during 18th -20th; Gujarat State during 18th-22nd and Marathawada on 18th August.
- ❖ Isolated **heavy rainfall** likely over Konkan & Goa, Madhya Maharashtra, Gujarat State during 7 days, Marathawada during next 2 days.
- ❖ Strong surface winds (speed reaching 40-50 kmph) very likely over the region till 22nd August.
- ❖ Light to moderate rainfall at most/many places very likely over the region during next 7 days.

South Peninsular India:

- ❖ **Extremely heavy rainfall** very likely at isolated places over Coastal Karnataka on 18th & 19th; Coastal Andhra Pradesh & Yanam, South Interior Karnataka and Telangana on 18th and North Interior Karnataka on 19th August.
- ❖ Isolated **heavy rainfall** likely over Tamil Nadu on 18th; Coastal Andhra Pradesh & Yanam, Karnataka Rayalaseema, Telangana and Kerala & Mahe during 18th-20th August with isolated **very heavy rainfall over Kerala & Mahe on 18th & 19th; North Interior Karnataka on 18th; Telangana, South Interior Karnataka on 19th and Coastal Karnataka on 20th August.**
- ❖ Strong surface winds (speed reaching 40-50 kmph) very likely over South Peninsular India till 19th August.
- ❖ Light to moderate rainfall at most/many places accompanied with thunderstorm & lightning likely over Rayalaseema, Tamil Nadu, Coastal Andhra Pradesh & Yanam and Telangana during next 5 days.

East & Central India:

- ❖ **Extremely heavy rainfall** very likely at isolated places over south Odisha & south Chhattisgarh on 18th August.
- ❖ Isolated **heavy rainfall** likely over Madhya Pradesh & Chhattisgarh during next 7 days; Vidarbha during 18th-20th; Odisha during 18th-19th, during 22nd-24th; Sub-Himalayan West Bengal & Sikkim during 20th-22nd; Gangetic West Bengal on 18th, during 21st-24th; Jharkhand during 21st-24th; Bihar during 20th-24th August **with isolated very heavy rainfall over West Madhya Pradesh, Chhattisgarh on 23rd & 24th; East Madhya Pradesh during 21st-24th; Vidarbha on 18th & 19th and Bihar on 22nd August.**
- ❖ Light to moderate rainfall at most/many places accompanied with thunderstorm & lightning likely over the region during next 5 days.

Northwest India:

- ❖ Isolated **heavy rainfall** likely over Jammu-Kashmir on 18th, 19th and during 22nd-24th; Himachal Pradesh, Uttarakhand, East Rajasthan during next 7 days; Punjab, Haryana Chandigarh, West Uttar Pradesh on 18th, during 22nd-24th; East Uttar Pradesh during 21st-24th; West Rajasthan on 21st & 22nd August **with very heavy rainfall over Jammu & Kashmir on 18th; Uttarakhand on 23rd & 24th; East Rajasthan on 21st & 22nd August.**
- ❖ Light/moderate rainfall at most/many places accompanied with thunderstorm & lightning likely over Jammu-Kashmir-Ladakh-Gilgit-Baltistan-Muzaffarabad, Uttarakhand & Rajasthan during next 7 days.

Northeast India:

- ❖ Isolated **heavy rainfall** likely to continue over Assam & Meghalaya, Nagaland, Manipur, Mizoram & Tripura, Arunachal Pradesh during 7 days with **very heavy rainfall over Arunachal Pradesh on 20th-24th; Tripura, Mizoram during 21st-24th and Assam & Meghalaya on 20th, 23rd & 24th August.**
- ❖ Light/moderate rainfall at many places accompanied with thunderstorm & lightning likely during next 3 days.

Fishermen warning:

Fishermen are advised not to venture into the following from 18th August to 23rd August 2025 to the following Areas:

Arabian Sea: Over central Arabian Sea and adjoining southwest Arabian Sea along and off Gujarat, Konkan, Goa coasts during 18th to 22nd August; most parts of central Arabian Sea and adjoining areas for 22nd August; some parts of northeast Arabian Sea, along and off the Somalia, Oman coasts and adjoining sea areas during 18th to 23rd August; over Comorin area during 18th August; Lakshadweep area, along & off Kerala coast during 18th to 20th August; Karnataka coast during 18th to 21st August

Bay of Bengal: Along and off Sri Lanka coast; over most parts Bay of Bengal, along and off Tamil Nadu coast during 18th to 20th August; many parts of westcentral and adjoining northwest Bay of Bengal for 21st August; many parts of north Bay of Bengal and adjoining areas for 22nd; along and off Andhra Pradesh during 18th to 22nd August; along and of Odisha coast during 18th to 21st August, south Odisha coast for 21st August; along and off West Bengal coast during 18th to 21st; over Gulf of Mannar during 18th to 21st and Andaman Sea for 18th August.

ii. Weather conditions and forecast over Delhi/NCR during 18th to 21st August, 2025 (Annexure IV)

For more details, kindly refer National Weather Bulletin:

https://mausam.imd.gov.in/responsive/all_india_forecast_bulletin.php

For District wise warnings refer: <https://mausam.imd.gov.in/responsive/districtWiseWarningGIS.php>

For Fishermen warning refer <https://rsmcnewdelhi.imd.gov.in/fishermen-warning.php>

Rainfall recorded (in cm) during past 24 hours till 0830 hours IST of today, the 18th August:

Konkan & Goa: Savarde-arg (dist Ratnagiri) 28; Mhasla (dist Raigad) 21; Dapoli ARG (dist Ratnagiri) 19; Wakwali ARG (dist Ratnagiri) 18; Kankavli (dist Sindhudurg) 17; Khed (dist Ratnagiri), Sangameshwar Devrukh (dist Ratnagiri) 16 Each; Harnai IMD (dist Ratnagiri), Ratnagiri (dist Ratnagiri) 15 Each; Margao (dist South Goa), Rajapur (dist Ratnagiri), Lanja (dist Ratnagiri) 13 Each; Panvel ARG (dist Raigad), Roha (dist Raigad) 12 Each; Tbia IMD Part Time (dist Thane), Guhagarh (dist Ratnagiri), Mandangad (dist Ratnagiri), Chiplun (dist Ratnagiri), Vaibhavwadi (dist Sindhudurg), Poladpur (dist Raigad) 11 Each; Santacruz (dist Mumbai Suburban), Shriwardhan (dist Raigad), Canacona (dist South Goa), Pernem (dist North Goa), Sawantwadi (dist Sindhudurg), Devgad (dist Sindhudurg), Mapusa (dist North Goa), Bhira - IMD Part Time (dist Raigad) 10 Each;

Coastal Karnataka: Castle Rock (dist Uttara Kannada) 24; Jagalbet (dist Uttara Kannada) 17; Siddapura (dist Udupi), Gersoppa (dist Uttara Kannada) 14 Each; Manki (dist Uttara Kannada) 12; Yellapur (dist Uttara Kannada) 9; Honavar (dist Uttara Kannada) 8;

Telangana: Wargal (dist Siddipet) 23; Alladurg (dist Medak) 22; Nizam Sagar (dist Kamareddy) 21; Kowdipalle (dist Medak) 17; Pitlam (dist Kamareddy) 16; Venkatapuram (dist Mulugu), Yellareddy (dist Kamareddy), Tekmal (dist Medak) 15 Each; Kotgiri (dist Nizamabad), Atmakur M (dist Y. Bhuvanagiri) 14 Each; Narsapur (dist Medak), Regode (dist Medak) 13 Each; Bodhan (dist Nizamabad), Papannapet (dist Medak), Varni (dist Nizamabad) 12 Each; Birkoor (dist Kamareddy) 11;

South Interior Karnataka: Agumbe AWS (dist Shivamogga) 19; Sringeri HMS (dist Chikkamagaluru), Jayapura (dist Chikkamagaluru) 13 Each; Koppa (dist Chikkamagaluru) 11; Kammardi (dist Chikkamagaluru) 9; Balehonnur (dist Chikkamagaluru), Kalasa (dist Chikkamagaluru) 8 Each;

Coastal Andhra Pradesh & Yanam: Paderu (dist Alluri Sitharamaraju) 16; Chodavaram (dist Anakapalli) 14; Vepada (dist Vizianagaram), Bheemunipatnam (dist Vishakhapatnam) 13 Each; Anakapalle (dist Anakapalli) 12; Narsipatnam (dist Anakapalli), Visakhapatnam AP (dist Vishakhapatnam) 11 Each; Yelamanchili (dist Anakapalli), Visakhapatnam (dist Vishakhapatnam) 10 Each; Srungavarapukota (dist Vizianagaram), Mandasa (dist Srikakulam) 8 Each;

Tamil Nadu: G Bazar (dist Nilgiris), Upper Gudalur (dist Nilgiris) 14 Each; Chinnakalar (dist Coimbatore), Devala (dist Nilgiris) 9 Each;

West Uttar Pradesh: Nakur (dist Saharanpur) 14; Rampur Maniharan (dist Saharanpur) 8;

Madhya Maharashtra: Gaganbawada (dist Kolhapur) 14; Mahabaleshwar (dist Satara), Radhanagari (dist Kolhapur) 12 Each; Shahuwadi (dist Kolhapur), Lonavala ARG (dist Pune) 7 Each;

Odisha: Kotpad (dist Koraput) 13; Malkangiri (dist Malkangiri) 11; Patrapur (dist Ganjam), Korukunda (dist Malkangiri) 9 Each; Kosagumda (dist Nawarangpur) 8; Purushottampur (dist Ganjam), Gosani (dist Gajapati), Polsara (dist Ganjam), Kodala (dist Ganjam), Chitrakunda K Guma (dist Malkangiri) 7 Each;

Kerala & Mahe: Padinjaraathara Dam AWS (dist Wynad) 13; Vytteri (dist Wynad), Ambalavayal (dist Wynad) 9 Each; Tellichery (dist Cannur), Munnar Kseb (dist Idukki), Ayyankunnu AWS (dist Cannur) 7 Each;

Marathwada: Ahmedpur (dist Latur) 12; Udgir - IMD Parttime (dist Latur), Kinwat (dist Nanded) 11 Each; Udgir (dist Latur) 10; Kandhar (dist Nanded) 9; Manjlegaon (dist Beed), Naigaon Khairgaon (dist Nanded), Parli Vajinath (dist Beed) 8 Each;

Uttarakhand: Narendranagar (dist Garhwal Tehri) 11; Deoprayag (dist Garhwal Tehri), Roorkee (dist Hardwar) 9 Each; Tehri (dist Garhwal Tehri), Srinagar (dist Garhwal Pauri) 8 Each;

Chhattisgarh: Chhindgarh (dist Sukma) 10; Sukma (dist Sukma), Dondilohara (dist Balod) 9 Each; Bakavand (dist Bastar), Bade Bacheli (dist Dantewada) 8 Each;

Andaman & Nicobar Islands: Maya Bandar (dist North & Middle Andaman) 10;

Haryana: Partapnagar REV (dist Yamuna Nagar) 10; Jagadhari (dist Yamuna Nagar) 9;

Saurashtra: Dhoraji (dist Rajkot) 8;

Vidarbha: Malegaon (dist Washim) 8;

Bihar: Kutumba (dist Aurangabad) 8;

Sub Himalayan West Bengal: Namthang (dist Namchi) 8; Balurghat (dist South Dinajpur) 7;

North Interior Karnataka: Londa (dist Belagavi) 8;

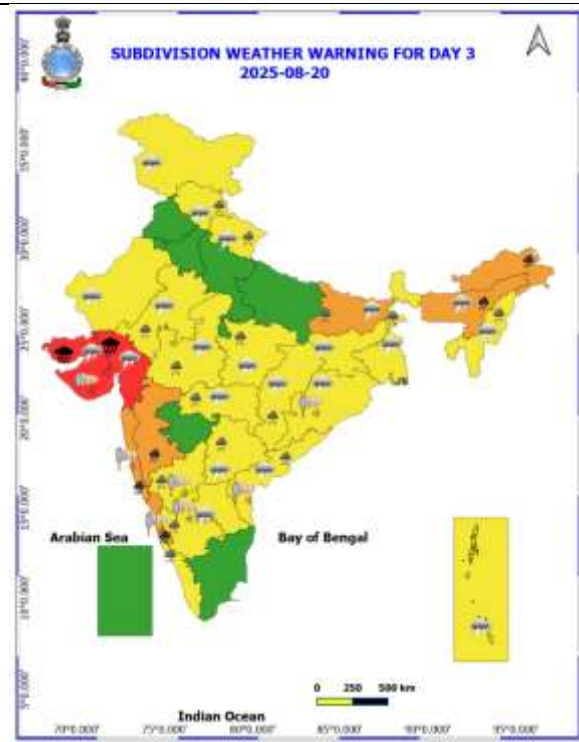
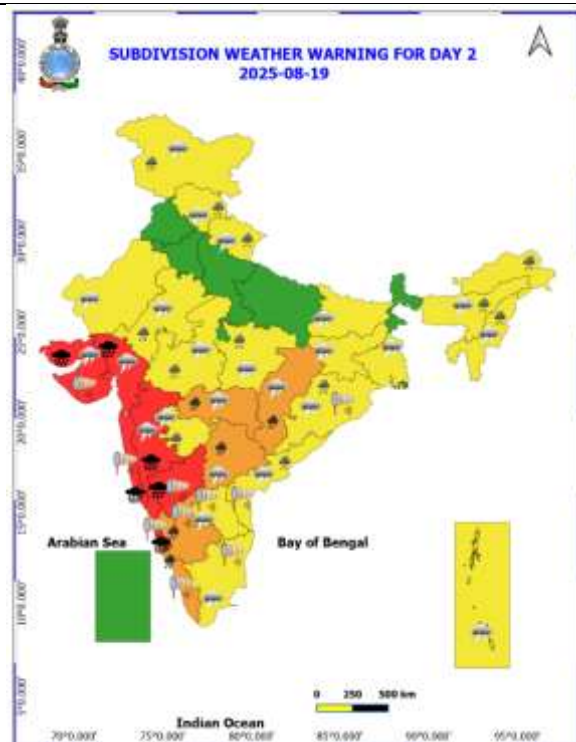
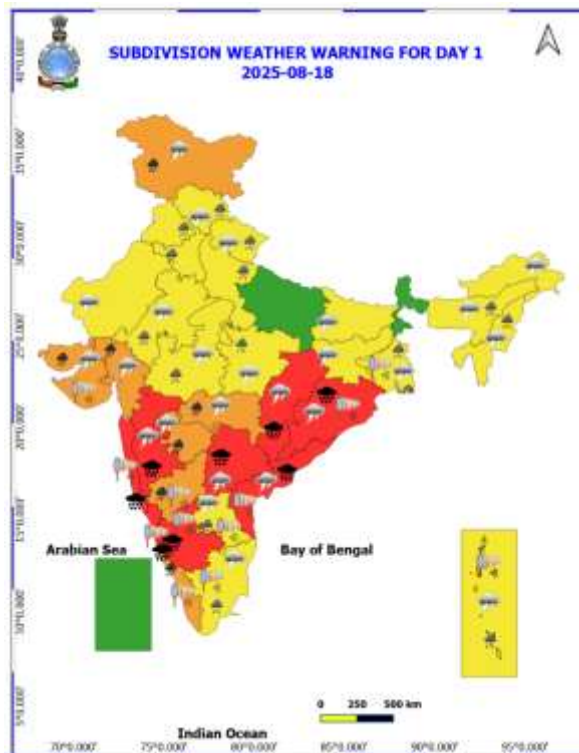
Manipur: Chandel (dist Chandel) 8;

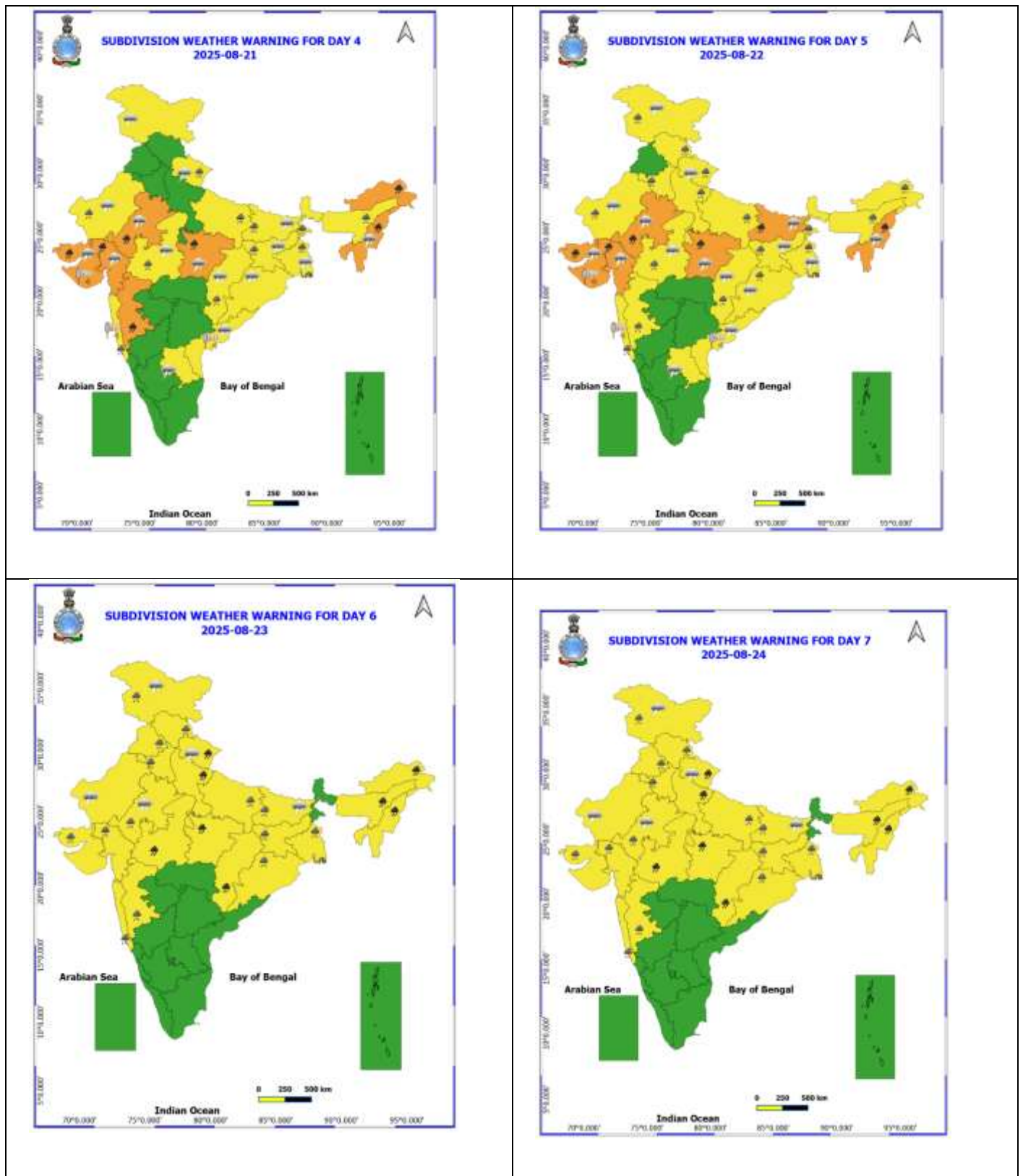
Assam: Lakhipur ARG (dist Cachar) 8; Dalgaon ARG (dist Darrang) 7;

West Madhya Pradesh: Bhagwanpura (dist Khargone) 7.

| Table-1 | | | | | | | | |
|--------------------------|--|---------|---------|---------|---------|---------|---------|---------|
| 7 Days Rainfall Forecast | | | | | | | | |
| S.No. | Subdivision | 18- Aug | 19- Aug | 20- Aug | 21- Aug | 22- Aug | 23- Aug | 24- Aug |
| | | Day 1 | Day 2 | Day 3 | Day 4 | Day 5 | Day 6 | Day 7 |
| 1 | ANDAMAN & NICOBAR ISLANDS | WS | WS | FWS | FWS | FWS | FWS | FWS |
| 2 | ARUNACHAL PRADESH | SCT | SCT | FWS | FWS | FWS | WS | WS |
| 3 | ASSAM & MEHGHALAYA | FWS | FWS | WS | WS | WS | WS | WS |
| 4 | NAGALAND, MANIPUR, MIZORAM AND TRIPURA | SCT | FWS | FWS | FWS | WS | WS | WS |
| 5 | SUB HIMALAYAN WEST BENGAL & SIKKIM | SCT | SCT | FWS | FWS | FWS | FWS | FWS |
| 6 | GANGETIC WEST BENGAL | FWS | FWS | FWS | WS | WS | WS | WS |
| 7 | ODISHA | WS | FWS | FWS | FWS | FWS | FWS | FWS |
| 8 | JHARKHAND | FWS | FWS | FWS | WS | WS | WS | WS |
| 9 | BIHAR | SCT | SCT | FWS | FWS | WS | WS | FWS |
| 10 | EAST UTTAR PRADESH | ISOL | ISOL | SCT | FWS | FWS | WS | WS |
| 11 | WEST UTTAR PRADESH | SCT | SCT | SCT | SCT | FWS | WS | WS |
| 12 | UTTARAKHAND | FWS | FWS | WS | FWS | WS | WS | WS |
| 13 | HARYANA, CHANDIGARH & DELHI | SCT | SCT | SCT | ISOL | SCT | FWS | FWS |
| 14 | PUNJAB | SCT | SCT | SCT | ISOL | SCT | FWS | FWS |
| 15 | HIMACHAL PRADESH | FWS | FWS | SCT | SCT | FWS | WS | WS |
| 16 | JAMMU AND KASHMIR AND LADAKH | WS | WS | ISOL | ISOL | SCT | FWS | SCT |
| 17 | WEST RAJASTHAN | ISOL | ISOL | ISOL | SCT | SCT | ISOL | SCT |
| 18 | EAST RAJASTHAN | SCT | SCT | FWS | FWS | SCT | SCT | FWS |
| 19 | WEST MADHYA PRADESH | FWS | FWS | WS | WS | WS | WS | WS |
| 20 | EAST MADHYA PRADESH | FWS | FWS | WS | WS | WS | WS | WS |
| 21 | GUJRAT REGION | WS | WS | WS | WS | WS | WS | WS |
| 22 | SAURASHTRA & KUTCH | WS | WS | WS | WS | WS | WS | WS |
| 23 | KONKAN & GOA | WS | WS | WS | WS | WS | WS | WS |
| 24 | MADHYA MAHARASHTRA | WS | WS | FWS | SCT | ISOL | ISOL | ISOL |
| 25 | MARATHWADA | WS | WS | FWS | SCT | ISOL | ISOL | ISOL |
| 26 | VIDARBHA | WS | WS | WS | FWS | FWS | FWS | FWS |
| 27 | CHHATTISGARH | WS | FWS | FWS | SCT | FWS | FWS | FWS |
| 28 | COASTAL ANDHRA PRADESH | WS | FWS | FWS | SCT | ISOL | ISOL | ISOL |
| 29 | TELANGANA | WS | WS | WS | FWS | SCT | SCT | SCT |
| 30 | RAYALASEEMA | WS | FWS | SCT | ISOL | ISOL | ISOL | ISOL |
| 31 | TAMILNADU & PUDUCHERRY | ISOL | ISOL | ISOL | ISOL | SCT | SCT | ISOL |
| 32 | COSTAL KARNATAKA | WS | WS | WS | WS | FWS | FWS | FWS |
| 33 | NORTH INTERIOR KARNATAKA | WS | WS | FWS | SCT | SCT | SCT | SCT |
| 34 | SOUTH INTERIOR KARNATAKA | WS | WS | FWS | SCT | SCT | SCT | SCT |
| 35 | KERALA AND MAHE | WS | WS | FWS | FWS | SCT | SCT | SCT |
| 36 | LAKSHADWEEP | FWS | FWS | SCT | SCT | SCT | SCT | SCT |

- As the lead period increases forecast accuracy decrease.





- Action may be taken based on ORANGE AND REDCOLOUR warnings.
- Vulnerable regions likely urban and hilly areas action may be initiated for heavy rainfall warning.
- As the lead period increases forecast accuracy decreases.

Detailed districtwise Multi Hazard weather warning for next five days available at <https://mausam.imd.gov.in/responsive/districtWiseWarningGIS.php>

Weather forecast over Delhi/NCR during 18th August to 21th August 2025**Past Weather:**

There has been no large change in Minimum temperatures and maximum temperatures in past 24 hours over Delhi. The minimum temperatures are in the range of 24-25°C and maximum temperatures were in the range of 33-34°C. The minimum temperatures are below normal by 1-2°C and maximum temperatures were near normal over Delhi. North easterly winds prevailed with wind speed upto 15 kmph in past 24 hours over Delhi. Maximum rainfall of 13 mm has been recorded at Pusa during past 24 hrs over Delhi. Generally cloudy sky conditions with a wind speed of upto 10-15 kmph from the northeast direction prevailed over the region in the forenoon today.

Weather Forecast:

18.08.2025: Generally cloudy sky. Possibility of one or two spells of very light to light rain/thundershowers during evening/night. The maximum temperatures over Delhi are likely to be in the range of 34 to 36°C. The maximum temperature will be near normal. The predominant surface wind will likely be from the southeast direction with a wind speed of upto 10-15 kmph during afternoon and 10-15 kmph from the east direction during evening and night.

19.08.2025: Generally cloudy sky. Possibility of very light to light rain/ thundershowers. The maximum and minimum temperatures over Delhi are likely to be in the range of 33 to 35°C and 23 to 25 °C respectively. The minimum temperature will be below normal up to 2 to 4°C and the maximum temperature will be near normal. The predominant surface wind will likely to be from the east direction with a wind speed of upto 05-10 kmph during morning and 10-15 kmph from the southeast direction during afternoon hours. The wind speed will slightly decrease upto 05-10 kmph from the southeast direction during evening and night.

20.08.2025: Generally cloudy sky. Possibility of very light to light rain/ thundershowers. The maximum and minimum temperatures over Delhi are likely to be in the range of 32 to 34°C and 23 to 25°C respectively. The minimum temperature will be below normal up to 2 to 4°C and the maximum temperature will be below normal upto 0 to 2°C. The predominant surface wind will likely to be from the southeast direction with a wind speed of upto 10-15 kmph during morning and afternoon hours. It will increase upto 15-20 kmph from the southeast direction during evening and night.

21.08.2025: Generally cloudy sky. Possibility of very light to light rain/ thundershowers. The maximum and minimum temperatures over Delhi are likely to be in the range of 32 to 34°C and 23 to 25°C respectively. The minimum temperature will be below normal up to 2 to 4°C and the maximum temperature will be below normal up to 0 to 2°C. The predominant surface wind will likely to be from the southeast direction with a wind speed of 10-15 kmph during morning and afternoon hours and 05-10 kmph from the southeast direction during evening and night.

Impact & Action Suggested due to

- ❖ **Extremely heavy rainfall** very likely at isolated places over Konkan & Goa; Ghat areas of Madhya Maharashtra, Coastal Karnataka on 18th & 19th; Gujarat State on 19th & 20th; Coastal Andhra Pradesh & Yanam, South Interior Karnataka and Telangana, south Odisha & south Chhattisgarh on 18th and North Interior Karnataka on 19th August.
- ❖ Isolated **heavy to very heavy rainfall** likely over Madhya Maharashtra, Konkan (including Mumbai) & Goa during 18th -20th; Gujarat State during 18th-22nd, Marathwada, Jammu & Kashmir on 18th; Kerala & Mahe, Vidarbha on 18th & 19th; North Interior Karnataka on 18th; Telangana, South Interior Karnataka on 19th and Coastal Karnataka on 20th; West Madhya Pradesh, Chhattisgarh, Uttarakhand on 23rd & 24th; East Madhya Pradesh during 21st-24th; Bihar on 22nd; East Rajasthan on 21st & 22nd; Arunachal Pradesh on 20th-24th; Tripura, Mizoram during 21st-24th and Assam & Meghalaya on 20th, 23rd & 24th August

Impact Expected

- Localized Flooding of roads, water logging in low lying areas and closure of underpasses mainly in urban areas of the above region.
- Occasional reduction in visibility due to heavy rainfall.
- Disruption of traffic in major cities due to water logging in roads leading to increased travel time.
- Minor damage to kutcha roads.
- Possibilities of damage to vulnerable structure.
- Localized Landslides/Mudslides/landslips/mudslips/landsinks/mudsinks.
- Damage to horticulture and standing crops in some areas due to inundation.
- It may lead to riverine flooding in some river catchments (for riverine flooding please visit Web page of CWC)

Action Suggested

- Check for traffic congestion on your route before leaving for your destination.
- Follow any traffic advisories that are issued in this regard.
- Avoid going to areas that face the water logging problems often.
- Avoid staying in vulnerable structure.

Agromet advisories for likely impact of Heavy / Heavy to Very Heavy Rainfall

- In **Maharashtra**, make arrangements to drain out excess water from rice fields maintaining 2.5 to 5 cm water level in **Konkan** and **ghat areas** of **Madhya Maharashtra**. In **Marathwada**, keep the harvested green gram produce in safer places. To prevent waterlogging, make provision for draining out excess water from fields of finger millet, turmeric, groundnut, vegetables and fruit orchards in **Konkan**; maize, groundnut, soybean, vegetables and fruit orchards in **ghat areas** of **Madhya Maharashtra**; groundnut, black gram, green gram, soybean, cotton, pigeon pea, pearl millet, turmeric, sugarcane, vegetables and fruit orchards in **Marathwada**; soybean and cotton in **West Vidarbha** and rice, soybean, cotton, pigeon pea, vegetables and fruit orchards in **East Vidarbha**.
- In **Gujarat**, make arrangements to drain out excess water from fields of rice, sugarcane, vegetables and tuber crops in **South Gujarat Heavy Rainfall Zone**; rice, cotton, sugarcane and pigeon pea in **South Gujarat Zone**; groundnut, cotton, soybean, black gram, green gram, sesame and pigeon pea in **South Saurashtra Zone**; groundnut, cotton and sesame in **North Saurashtra Zone** and rice, cotton, green gram, black gram, pigeon pea, pearl millet and vegetables in **Bhal and Coastal Zone**.
- In **Madhya Pradesh**, provide adequate drainage in fields of maize, soybean, cotton and vegetables in **Satpura Plateau Zone**; soybean, maize and vegetables in **Malwa Plateau Zone**; rice, soybean, maize, sugarcane and vegetables in **Central Narmada Valley Zone**; soybean, pigeon pea, cotton and vegetables in **Nimar Valley Zone** and maize, soybean, black gram, cotton, and pigeon pea in **Vindhyan Plateau Zone**.
- In **Chhattisgarh**, make arrangements to drain out excess water from fields of *kharif* maize, rice, minor millets, pulses and vegetables in **Bastar Plateau Zone**.
- In **Kerala**, provide adequate drainage in rice, coconut, banana and ginger fields. Provide support to banana plantations. Make the vegetable pandals stronger.

- In **Karnataka**, provide adequate drainage facilities in rice fields and plantations of arecanut and banana in **Coastal Zone**; fields of rice, maize, cotton, ginger and plantations of arecanut in **Hill Zone** and fields of rice, maize and plantations of arecanut and coconut in **Southern Transition Zone**.
- In **Telangana**, drain out excess water from fields of rice, cotton, maize, soybean, pigeon pea, turmeric and vegetables in **Northern Telangana Zone** and rice, cotton, soybean, vegetables and vegetable nurseries in **Southern Telangana Zone**.
- In **Andhra Pradesh**, make arrangements to drain out excess water from fields of maize, cotton, sugarcane, rice, mesta, red gram, green gram, black gram and groundnut in **North Coastal Zone** and rice, maize and vegetable fields in **High Altitude Tribal Zone**.
- In **Odisha**, make arrangements to drain out excess water from the fields of rice, maize, green gram, black gram, ginger, turmeric, vegetables and orchards in **Eastern Ghat High Land Zone** and **South Eastern Ghats**.
- In **Jammu and Kashmir**, do not allow water to stagnate in fields of maize, pulses, cowpea, bajra, fodder crops and vegetables in **Sub Tropical Zone**. Maintain proper drainage facilities in maize, pulses and vegetable fields to avoid waterlogging in **Intermediate Zone**. In **Valley Temperate Zone**, provide proper staking to bottle gourd, cucumber, bitter gourd, vines, and indeterminate tomatoes. Make proper drainage channels in maize fields to remove excess rain water.
- In **Himachal Pradesh**, maintain proper drainage channels in ginger, turmeric and maize fields in **Mid Hills Sub Humid Zone** and rice, maize and vegetable fields in **Sub Montane and Low Hills Sub Tropical Zone**. In **High Hills Sub Temperate Wet Zone**, harvest ripened tomatoes and ensure proper drainage in maize, kidney bean, vegetables and orchards.
- In **Uttarakhand**, maintain proper drainage channels in fields of soybean, maize, pulses, finger millet, ginger, vegetable fields and fruit orchards in **Hill Zone**; barnyard millet, finger millet and already sown green gram in **Sub Humid Sub Tropic Zone**. Ensure proper drainage in rice, maize, soybean, green gram, and vegetables in Nainital district.
- In **Punjab**, In **Undulating Plain Zone**, maintain proper drainage in chilli fields and remove stagnant rainwater immediately after rainfall. In **Sub-Montane Undulating Zone**, ensure proper drainage in sugarcane maize, soybean and green gram.
- In **Haryana** - In **Eastern Zone**, postpone irrigation in cotton and pearl millet crop fields and make drainage system to drain out excess water.

Livestock / Fishery

- Keep the animals inside the shed during heavy rainfall and provide them balanced feed.
- Store feed and fodder in a safe place to prevent spoilage.
- Construct an outlet with proper netting around the ponds to drain out excess water, thereby preventing fish from escaping in case of overflow.

Agromet advisories for likely impact of Thunderstorm / Gusty Winds / Squally Winds (Based on the IBF and advisories issued by different AMFUs)

- Provide mechanical support to horticultural crops and staking or support to vegetables and young fruit plants / fruit-bearing plants to avoid lodging due to strong winds.

Flash flood guidance:

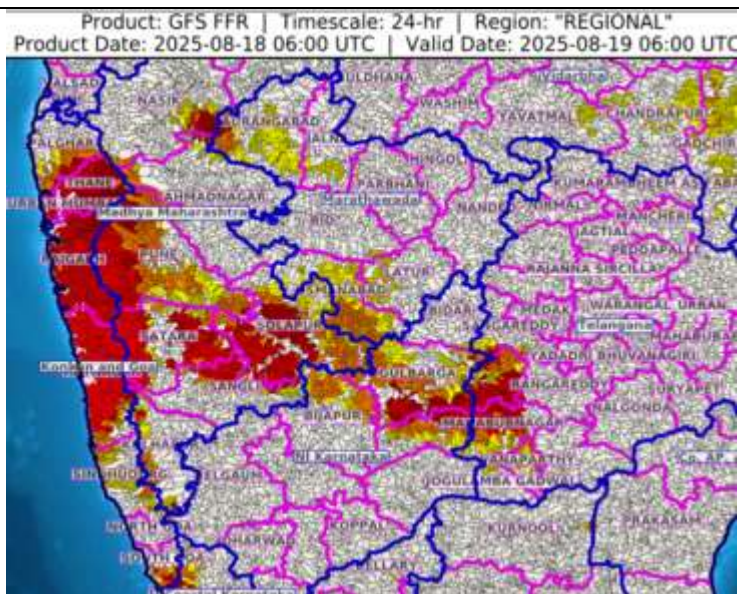
24 hours Outlook for the Flash Flood Risk (FFR) till 1130 IST of 19-08-2025 :

Moderate flash flood risk likely over few watersheds & neighbourhoods of following Met Sub-divisions during next 24 hours.

North Interior Karnataka - Bidar, Bijapur, Gulbarga and Yadgir districts. Telangana - Jogulamba Gadwal, Mahabubnagar, Sangareddy, Vikarabad and Wanaparthi districts. Konkan & Goa - North Goa, South Goa, Mumbai City, Palghar, Raigarh, Ratnagiri, Sindhudurg, Suburban Mumbai and Thane districts.

Madhya Maharashtra - Ahmadnagar, Kolhapur, Nasik, Pune, Sangli, Satara and Solapur districts.

Surface runoff/ Inundation may occur at some fully saturated soils & low-lying areas over Area of Concern (AoC) as shown in map due to expected rainfall occurrence in next 24 hours.

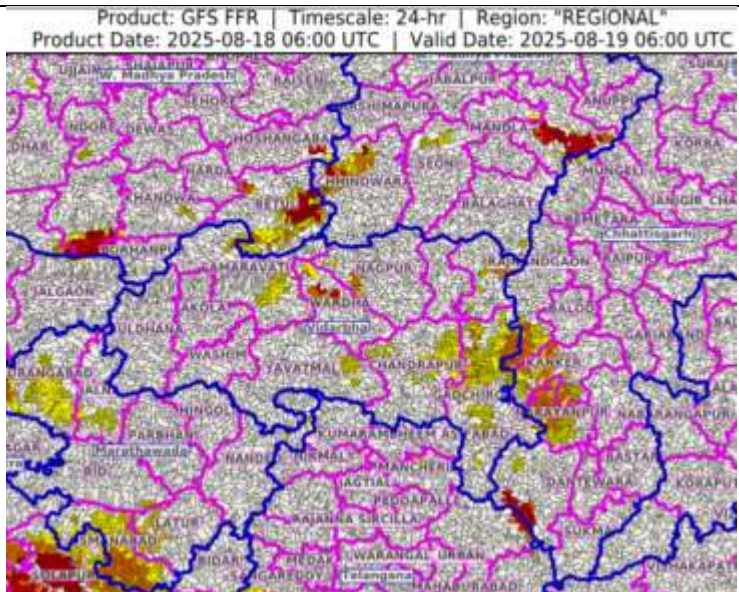


24 hours Outlook for the Flash Flood Risk (FFR) till 1130 IST of 19-08-2025 :

Low to Moderate flash flood risk likely over few watersheds & neighbourhoods of following Met Sub-divisions during next 24 hours.

Chhattisgarh - Dantewara, Kanker, Narayanpur and Rajnandgaon districts. Vidarbha - Amaravati, Chandrapur, Gadchiroli, Gondiya, Wardha and Yavatmal districts. Marathawada - Aurangabad, Jalna, Latur and Osmanabad districts.

Surface runoff/ Inundation may occur at some fully saturated soils & low-lying areas over Area of Concern (AoC) as shown in map due to expected rainfall occurrence in next 24 hours.

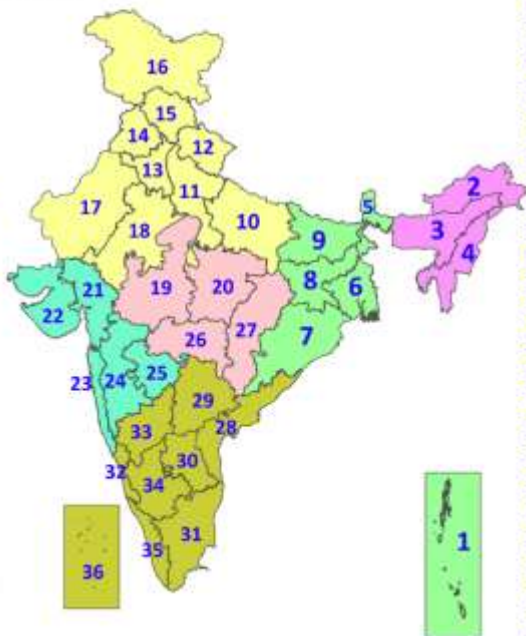


Legends & abbreviations:

- ❖ **Heavy Rain:**64.5-115.5mm; **Very Heavy Rain:**115.6-204.4mm; **Extremely Heavy Rain:** >204.4mm.
- ❖ **Obsy:** Observatory; Automatic Weather Station; **ARG:** Automatic Rain Gauge; **dist:** District; **NH:** National Highway; **KVK:** Krishi Vigyan Kendra; **DVC:** Damodar Valley Corporation; **PTO:** Part Time Office, **Aero:** Aerodrome, **IAF:** Indian Air Force.
- ❖ **Region wise classification of meteorological Sub-Divisions:**
 - **Northwest India:** Western Himalayan Region (Jammu-Kashmir-Ladakh-Gilgit-Baltistan-Muzaffarabad, Himachal Pradesh and Uttarakhand); Punjab, Haryana-Chandigarh-Delhi; West Uttar Pradesh, East Uttar Pradesh, West Rajasthan and East Rajasthan.
 - **Central India:** West Madhya Pradesh, East Madhya Pradesh, Vidarbha and Chhattisgarh.
 - **East India:** Bihar, Jharkhand, Sub-Himalayan West Bengal & Sikkim; Gangetic West Bengal, Odisha and Andaman & Nicobar Islands.
 - **Northeast India:** Arunachal Pradesh, Assam & Meghalaya and Nagaland, Manipur, Mizoram & Tripura.
 - **West India:** Gujarat Region, Saurashtra & Kutch, Konkan & Goa, Madhya Maharashtra and Marathawada.
 - **South India:** Coastal Andhra Pradesh & Yanam, Telangana, Rayalaseema, Coastal Karnataka, North Interior Karnataka, South Interior Karnataka, Kerala & Mahe, Tamil Nadu, Puducherry & Karaikal and Lakshadweep.

LEGENDS

1. अंडमान और निकोबार द्वीपसमूह
2. अरुणाचल प्रदेश
3. असम और मेघालय
4. नागालैंड, मणिपुर, मिजोरम और त्रिपुरा
5. उप-हिमालयी पश्चिम बंगाल और सिक्किम
6. गंगीय पश्चिम बंगाल
7. ओडिशा
8. झारखंड
9. बिहार
10. पूर्वी उत्तर प्रदेश
11. पश्चिम उत्तर प्रदेश
12. उत्तराखंड
13. हरियाणा, चंडीगढ़ और दिल्ली
14. पंजाब
15. हिमाचल प्रदेश
16. जम्मू और कश्मीर और लद्दाख
17. पश्चिम राजस्थान
18. पूर्वी राजस्थान
19. पश्चिम मध्य प्रदेश
20. पूर्वी मध्य प्रदेश
21. गुजरात
22. सौराष्ट्र
23. कोंकण और गोवा
24. मध्य महाराष्ट्र
25. मराठवाड़ा
26. विदर्भ
27. छत्तीसगढ़
28. तटीय आंध्र प्रदेश और यनम
29. तेलंगाना
30. रायलसीमा
31. तमिलनाडु, पुडुचेरी और कराईकल
32. तटीय कर्नाटक
33. आंतरिक उत्तरी कर्नाटक
34. आंतरिक दक्षिणी कर्नाटक
35. केरल और माहे
36. लक्षद्वीप



1. Andaman & Nicobar Islands
2. Arunachal Pradesh
3. Assam & Meghalaya
4. Nagaland, Manipur, Mizoram & Tripura
5. Sub-Himalayan West Bengal & Sikkim
6. Gangetic West Bengal
7. Odisha
8. Jharkhand
9. Bihar
10. East Uttar Pradesh
11. West Uttar Pradesh
12. Uttarakhand
13. Haryana, Chandigarh & Delhi
14. Punjab
15. Himachal Pradesh
16. Jammu & Kashmir and Ladakh
17. West Rajasthan
18. East Rajasthan
19. West Madhya Pradesh
20. East Madhya Pradesh
21. Gujarat
22. Saurashtra
23. Konkan & Goa
24. Madhya Maharashtra
25. Marathwada
26. Vidarbha
27. Chhattisgarh
28. Coastal Andhra Pradesh & Yanam
29. Telangana
30. Rayalaseema
31. Tamilnadu, Puducherry & Karaikal
32. Coastal Karnataka
33. North Interior Karnataka
34. South Interior Karnataka
35. Kerala & Mahe
36. Lakshadweep

SPATIAL DISTRIBUTION (% of Stations reporting)

| % Stations | Category | % Stations | Category |
|------------|-------------------------------------|------------|------------------------------|
| 76-100 | Widespread (WS/Most Places) | 26-50 | Scattered (SCT/A Few Places) |
| 51-75 | Fairly Widespread (FWS/Many Places) | 1-25 | Isolated (ISOL) |



Heavy Rain

Very Heavy Rain

Extremely Heavy Rain

Thunder & Lightning

Hailstorm

Dust Raising Winds

Heavy Snow

Dust Storm

Heat Wave

Warm Night

Hot Day

Hot & Humid

Strong Surface Winds

Cold Wave

Cold Day

Ground Frost

COLOUR CODED WARNING

No Warning (No Action)

Watch (Be Aware)

Alert (Be Prepared To Take Action)

Warning (Take Action)

Probabilistic Forecast

| Terms | Probability of Occurrence (%) |
|-------------|-------------------------------|
| Unlikely | < 25 |
| Likely | 25 - 50 |
| Very Likely | 50 - 75 |
| Most Likely | > 75 |

* Red colour warning does not mean "Red Alert", Red colour warning means "Take Action".

Forecast and Warning for any day is valid from 0830 hours IST of day till 0830 hours IST of next day.

For more details, kindly visit <https://mausam.imd.gov.in> or contact: 011-2434-4599

(Service to the Nation since 1875)

DEFINITION/CRITERIA

Rain/ Snow *

Heavy: 64.5 to 115.5 mm/cm *
Very Heavy: 115.6 to 204.4 mm/cm *
Extremely Heavy: > 204.4 mm/cm *

Heat Wave

When maximum temperature of a station reaches $\geq 40^{\circ}\text{C}$ for plains and $\geq 30^{\circ}\text{C}$ for hilly regions
(a) Based on Departure from normal

Heat Wave: Maximum Temperature Departure from normal 4.5°C to 6.4°C .

Severe Heat Wave: Maximum Temperature Departure from normal $\geq 6.5^{\circ}\text{C}$

(b). Based on Actual maximum temperature

Heat Wave: When actual maximum temperature $\geq 45^{\circ}\text{C}$.

Severe Heat Wave: When actual maximum temperature $\geq 47^{\circ}\text{C}$.

(c). Criteria for heat wave for coastal stations

When maximum temperature departure is $> 4.5^{\circ}\text{C}$ from normal. Heat Wave may be described provided maximum temperature $\geq 37^{\circ}\text{C}$.

Warm Night

When maximum temperature remains 40°C

Warm Night: When minimum temperature departure 4.5°C to 6.4°C .

Severe Warm Night: When minimum temperature departure $> 6.4^{\circ}\text{C}$.

Cold Wave

When minimum temperature of a station $\leq 10^{\circ}\text{C}$ for plains and $\leq 0^{\circ}\text{C}$ for hilly regions.

(a). Based on departure

Cold Wave: Minimum Temperature Departure from normal -4.5°C to -6.4°C .

Severe Cold Wave: Minimum Temperature Departure from normal $\leq -6.5^{\circ}\text{C}$

(b) Based on actual Minimum Temperature (for Plains only)

Cold Wave: When Minimum Temperature is $\leq 4.0^{\circ}\text{C}$

Severe Cold Wave: When Minimum Temperature is $\leq 2.0^{\circ}\text{C}$

(c) For Coastal Stations

When Minimum Temperature departure is $\leq -4.5^{\circ}\text{C}$ & actual Minimum Temperature is $\leq 15^{\circ}\text{C}$

Cold Day

When minimum temperature of a station $\leq 10^{\circ}\text{C}$ for plains and $\leq 0^{\circ}\text{C}$ for hilly regions

Based on departure

Cold Day: Maximum Temperature Departure from normal -4.5°C to -6.4°C .

Severe Cold Day: Maximum Temperature Departure from normal $\leq -6.5^{\circ}\text{C}$

Fog

Phenomenon of small droplets suspended in air and the horizontal visibility $< 1\text{km}$

Moderate Fog: When the visibility between 500-200 metres

Dense Fog: when the visibility between 50- 200 metres

Very Dense Fog: when the visibility < 50 metres

Thunderstorm

Sudden electrical discharges manifested by a flash of light (Lightning) and a sharp rumbling sound (thunder)

Dust/Sand Storm

An ensemble of particles of dust or sand energetically lifted to great heights by a strong and turbulent wind.

Frost

Ice deposits on ground

Air temperature $\leq 4^{\circ}\text{C}$ (over Plains)

Squall

A strong wind that rises suddenly, lasts for atleast 1 minute.

Moderate: Wind speed 52-61 kmph

Severe: Wind speed 62-67 kmph

Very Severe: Wind speed > 67 kmph

Sea State

Effect of various waves in the sea over specific area

Rough to very rough: Wind speed 41-62 kmph (22-33 knots) & Wave height 2.5-6 metre

High to very high: Wind speed 63-117 kmph (34-63 knots) & Wave height 6-14 metre

Phenomenal: Wind speed > 117 kmph (> 63 knots) & Wave height > 14 metre

Cyclone

Cyclonic Storm: Wind speed 62-87 kmph (34-47 knots)

Severe Cyclonic Storm: Wind speed 88-117 kmph (48-63 knots)

Very Severe Cyclonic Storm: Wind speed 118-165 kmph (64 - 89 knots)

Extremely Severe Cyclonic Storm: Wind speed 166-220 kmph (90 -119 knots)

Super Cyclone Storm: Wind speed > 220 kmph (> 119 knots)

* Red colour warning does not mean "Red Alert", Red colour warning means "Take Action".

Forecast and Warning for any day is valid from 0830 hours IST of day till 0830 hours IST of next day.

For more details, kindly visit <https://mausam.imd.gov.in> or contact: 011-2434-4599

(Service to the Nation since 1875)

Hot and Humid: When maximum temperatures remain 3°C above normal along with the above normal relative humidity.