



Government of India
Ministry of Earth Sciences
India Meteorological Department



Press Release

Date: 31st March, 2025

Time of Issue: 1400 hours IST

- Subject:**
- Thunderstorm and lightning, gusty surface wind (40-60 kmph) and hailstorm activity likely over Maharashtra, interior Karnataka, Madhya Pradesh, Chhattisgarh and Odisha during next 4-5 days.**
 - Isolated Heat wave conditions likely over Saurashtra & Kutch on 31st March & 01st April.**
 - Maximum temperature is likely to increase over northwest India by 3-5°C from 31st March to 02nd April.**

i. Realised weather during past 24 hours till 0830 hours IST of today, the 31st March 2025 (Annexure I):

- ❖ **Squally/Gusty winds** prevailed at isolated locations over North Interior Karnataka.

For more details of realised weather, kindly refer **Annexure I**

Temperature:

- ❖ Temperature observations during past 24 hours till 0830 hours IST of today are provided in **Annexure II**.

ii. Weather Systems, Forecast and Warnings (Annexure III & IV):

- ❖ A Cyclonic Circulation lies over Marathwada & neighbourhood in lower tropospheric levels.
- ❖ A North-south trough runs from above Cyclonic Circulation over Marathwada to north Tamil Nadu across interior Karnataka in the lower tropospheric levels.
- ❖ Under the influence of these systems and confluence of moist winds from Arabian sea and Bay of Bengal in lower levels;
- ✓ **Thunderstorm, lightning & gusty winds (speed 30-60 kmph)** likely over Madhya Pradesh, Vidarbha, Telangana, Coastal Karnataka, Kerala & Mahe, Konkan & Goa, Madhya Maharashtra during 31st March to 04th April; Gujarat State on 01st & 02nd April; Chhattisgarh, Odisha, Marathwada, Coastal Andhra Pradesh & Yanam, Interior Karnataka during 31st March to 04th April; Gangetic West Bengal, Jharkhand, Rayalaseema during 02nd-04th April.
- ✓ **Hailstorm** likely over Madhya Pradesh, Vidarbha during 01st-04th; Madhya Maharashtra, Marathawada on 01st & 02nd; Chhattisgarh, Telangana on 02nd & 03rd; Odisha during 02nd-04th; Jharkhand on 03rd & 04th; North Interior Karnataka during 01st-03rd; South Interior Karnataka on 03rd April.
- ✓ **Heavy rainfall** very likely at isolated places over Coastal & South Interior Karnataka on 03rd & 04th April; Kerala & Mahe during 03rd-06th April.
- ❖ Under the influence of Subtropical Westerly Jet core over northeast India in middle and upper tropospheric levels and a lower-level cyclonic circulation over northeast Assam and adjoining Arunachal Pradesh;

- ✓ **Scattered to fairly widespread** light/moderate rainfall accompanied with **thunderstorm, lightning & gusty winds (speed 40-50 kmph)** likely over south Assam, northeast Assam, Arunachal Pradesh and Tripura on 31st March.

Temperature Forecast:

- ❖ Gradual rise in maximum temperatures by 2-3°C likely over East during 31st March to 2nd April and no significant change till 4th April.
- ❖ Gradual rise in maximum temperatures by 2-4°C likely over Northwest India during 31st March to 2nd April and no significant change till 4th April.
- ❖ No significant change in maximum temperatures likely over Central India & south Peninsular India till 2nd April and fall by 2-4°C thereafter.
- ❖ No significant change in maximum temperatures likely over Maharashtra till tomorrow, 1st April and fall by 2-4°C thereafter.
- ❖ No significant change in maximum temperatures likely over rest parts of the country during till 4th April.

Heat wave and Hot & Humid weather warning:

- ❖ **Heat Wave conditions very likely to prevail at isolated pockets of Saurashtra & Kutch on 31st March & 01st April.**
- ❖ **Hot & humid weather conditions very likely to prevail at isolated pockets of Assam on 31st March & 01st April; Tripura during 31st March- 03rd April; Gujarat state during 31st March- 04th April.**

iv. Weather conditions and forecast over Delhi/NCR during 31st March to 03rd April. 2025 (Annexure V)

For more details, kindly refer National Weather Bulletin:

https://mausam.imd.gov.in/responsive/all_india_forecast_bulletin.php

For District wise warnings refer:

<https://mausam.imd.gov.in/responsive/districtWiseWarningGIS.php>

ANNEXURE I

Significant weather reported during past 24 hours till 0830 hours IST of today:

- ❖ **Light/moderate Rainfall** observed at isolated places over Arunachal Pradesh, Madhya Maharashtra and Karnataka.

Rainfall recorded (in cm):

- ❖ **Coastal Karnataka:** Haliyal (dist Uttara Kannada) 3.
- ❖ **North Interior Karnataka:** Dharwad Pto (dist Dharwad) 2, Hungund (dist Bagalkote) 1, Kittur (dist Belagavi) 1, Hubballi (dist Dharwad) 1.

Temperature observations during past 24 hours till 0830 hours IST of today:

- ❖ Yesterday, Maximum Temperatures had **fallen by 1-3°C** over many parts of Gangetic West Bengal; at isolated places over Odisha, Coastal Andhra Pradesh & Yanam, Telangana, Tamil Nadu, Puducherry & Karaikal, Konkan & Goa; **risen by 2-4°C** many places over Rajasthan and isolated places over West Madhya Pradesh, Punjab, Haryana-Chandigarh-Delhi, West Uttar Pradesh, Jammu-Kashmir-Ladakh-Gilgit-Baltistan-Muzaffarabad, Interior Karnataka; **by 1-2°C** many places over East Uttar Pradesh; a few places over Himachal Pradesh, East Madhya Pradesh; isolated places over Vidarbha, Madhya Maharashtra, Marathwada and no significant change over rest parts of the country.
- ❖ Yesterday, **Maximum Temperatures** were in the range of **38-42°C** at many places over Marathwada, Odisha; at a few places over Gujarat state, Tamil Nadu, Puducherry & Karaikal; at isolated places over Telangana, Andhra Pradesh, North Interior Karnataka, Kerala & Mahe and **36-37°C** at most places over East Rajasthan, Madhya Pradesh, Gangetic West Bengal, Bihar, many places over Uttar Pradesh; isolated places over Assam & Meghalaya, Nagaland, Manipur, Mizoram & Tripura. Yesterday, the highest maximum temperature of **42.3°C** was reported at **Akola (Vidarbha)** over the country. **(Fig.1)**
- ❖ Yesterday, Maximum Temperatures were **appreciably above normal (3.1°C to 5.0°C)** at isolated places over Himachal Pradesh, Uttarakhand, Assam & Meghalaya, Nagaland, Manipur, Mizoram & Tripura, Saurashtra & Kutch, Odisha, Sub-Himalayan West Bengal & Sikkim; **above normal (1.6°C to 3.0°C)** at a few places over Vidarbha; at isolated places over Jammu-Kashmir-Ladakh-Gilgit-Baltistan-Muzaffarabad, Chhattisgarh, Telangana, Jharkhand, Gangetic West Bengal, Bihar, Madhya Maharashtra. These were **below normal (-3.0°C to -1.6°C)** at isolated places over Arunachal Pradesh and near normal over rest parts of the country. **(Fig. 2).**

Fig. 1: Maximum Temperatures

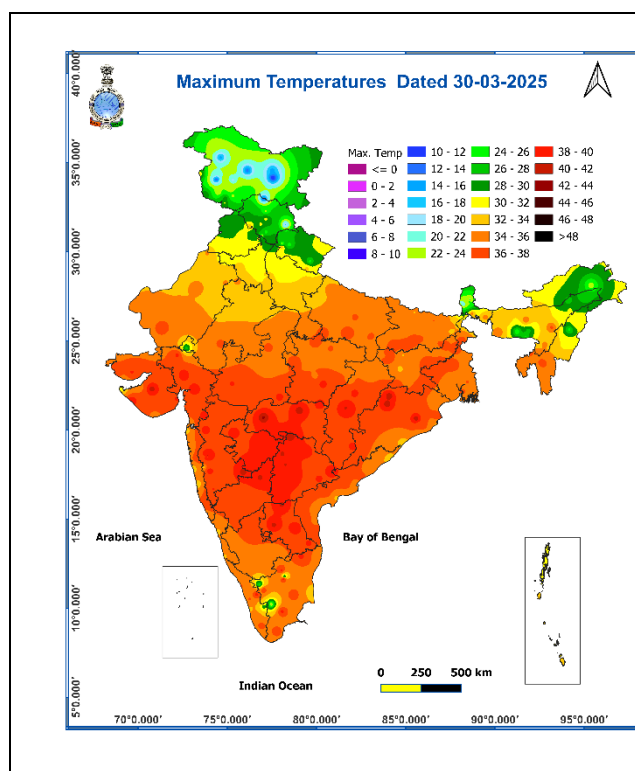
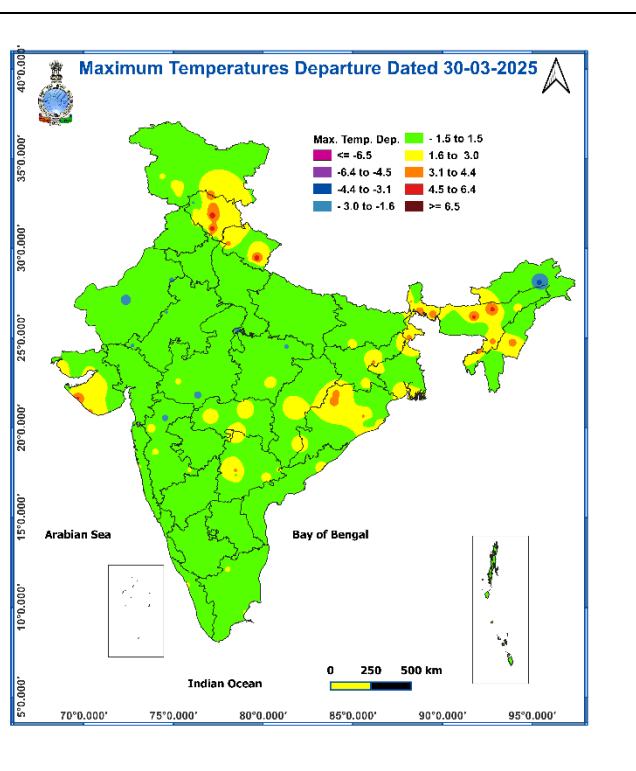


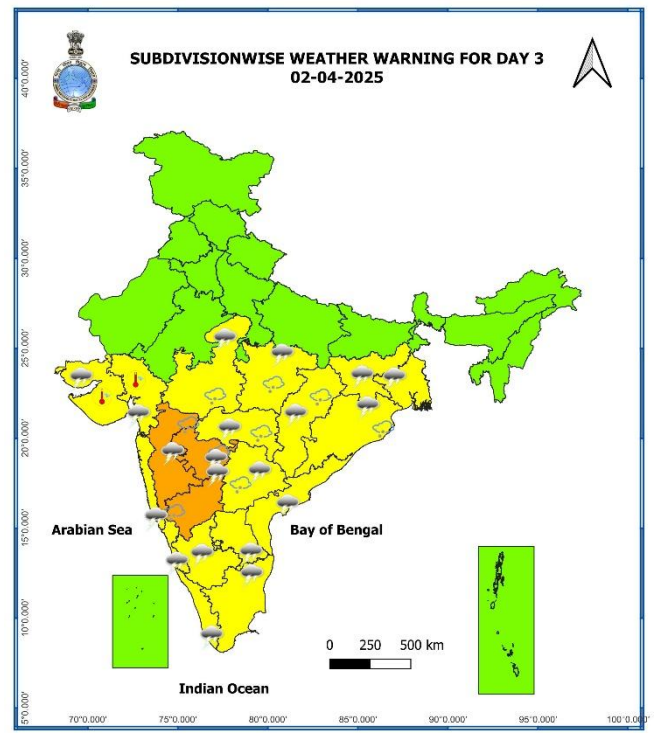
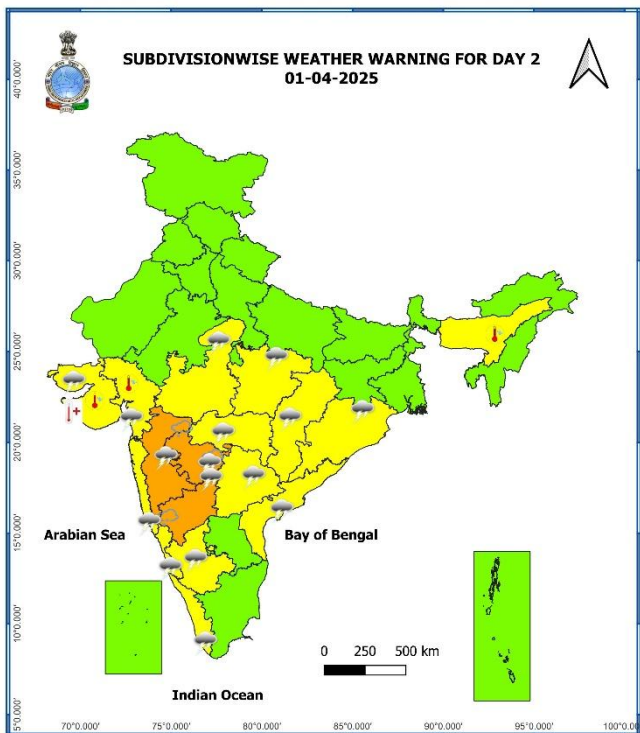
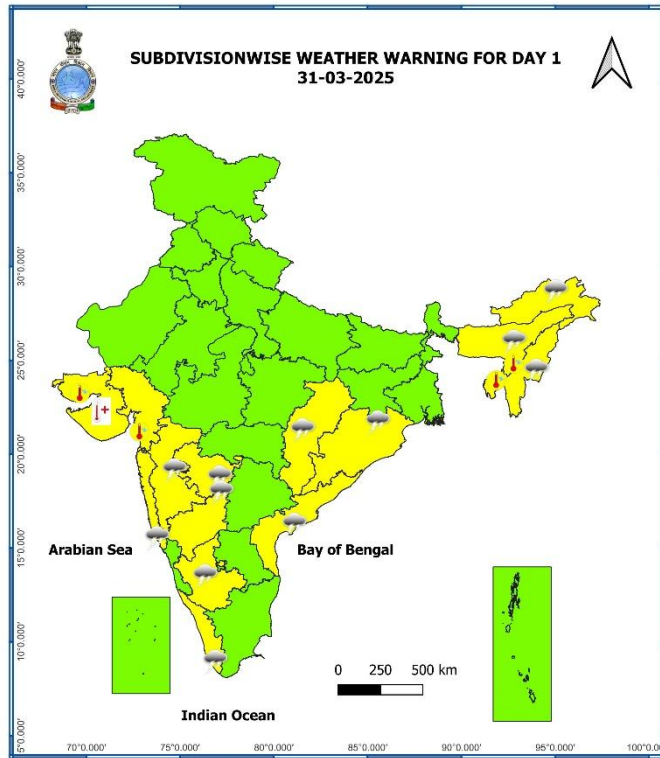
Fig. 2: Departure of Maximum Temperatures

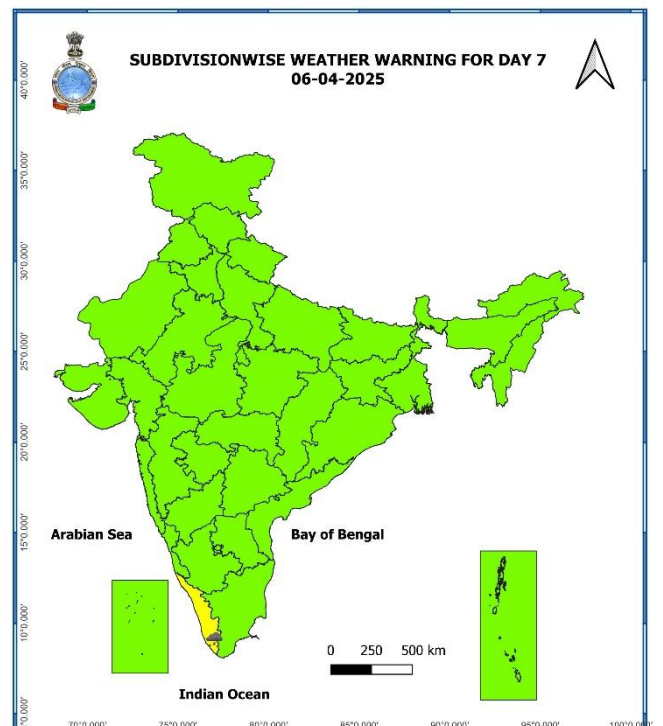
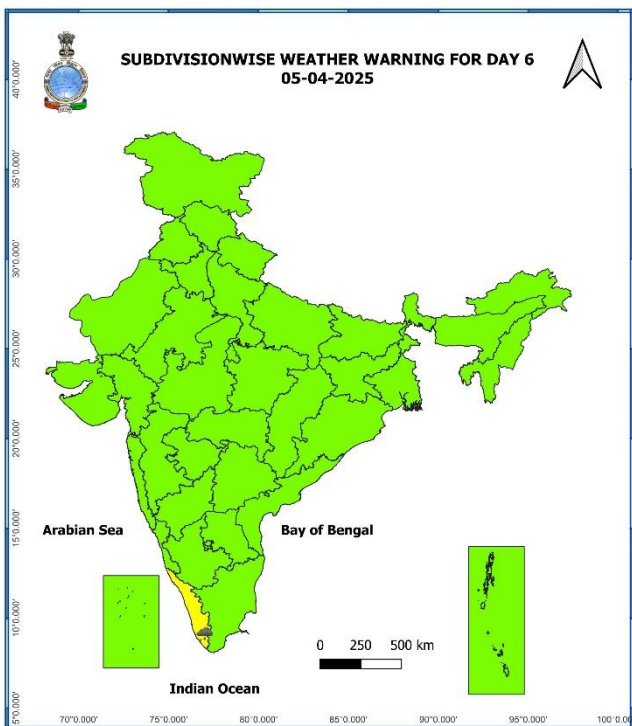
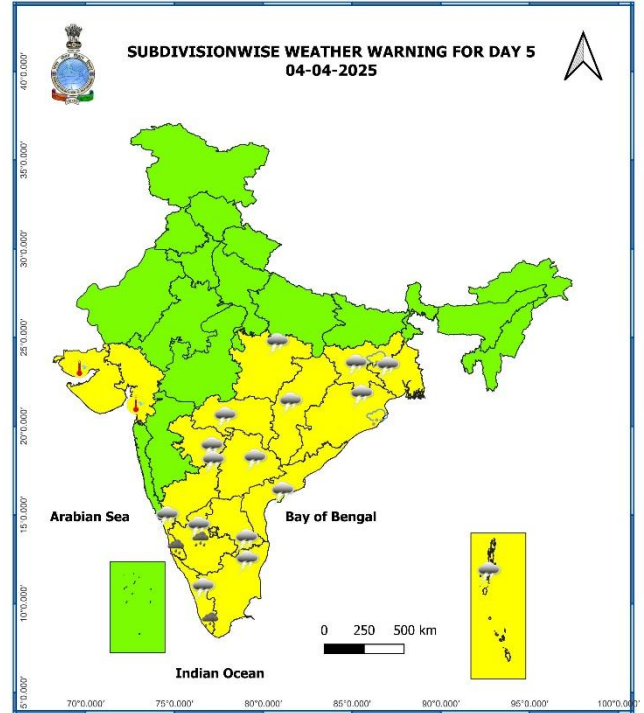
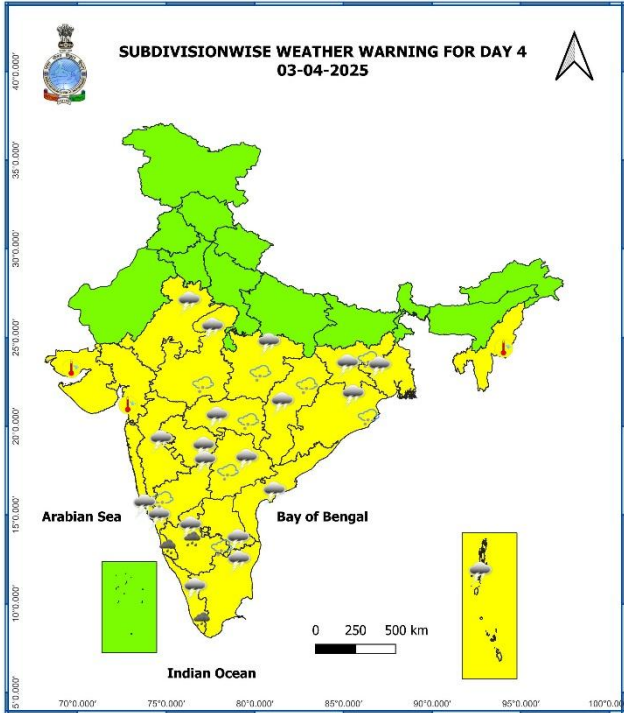


ANNEXURE III

7 Days Rainfall Forecast								
S. No.	Subdivision	31-Mar	01-Apr	02-Apr	03-Apr	04-Apr	05-Apr	06-Apr
		Day 1	Day 2	Day 3	Day 4	Day 5	Day 6	Day 7
1	ANDAMAN & NICOBAR ISLANDS	ISOL	SCT	FWS	WS	WS	WS	FWS
2	ARUNACHAL PRADESH	ISOL	ISOL	ISOL	ISOL	SCT	SCT	SCT
3	ASSAM & MEGHALAYA	ISOL	ISOL	DRY	DRY	ISOL	SCT	FWS
4	NAGALAND, MANIPUR, MIZORAM & TRIPURA	ISOL	ISOL	DRY	DRY	ISOL	ISOL	SCT
5	SUB-HIMALAYAN WEST BENGAL & SIKKIM	ISOL	DRY	DRY	DRY	DRY	DRY	DRY
6	GANGETIC WEST BENGAL	DRY	DRY	ISOL	ISOL	ISOL	ISOL	ISOL
7	ODISHA	ISOL	ISOL	ISOL	ISOL	ISOL	ISOL	ISOL
8	JHARKHAND	DRY	DRY	ISOL	ISOL	ISOL	DRY	DRY
9	BIHAR	DRY	DRY	DRY	DRY	DRY	DRY	DRY
10	EAST UTTAR PRADESH	DRY	DRY	DRY	DRY	DRY	DRY	DRY
11	WEST UTTAR PRADESH	DRY	DRY	DRY	DRY	DRY	DRY	DRY
12	UTTARAKHAND	DRY	DRY	DRY	ISOL	ISOL	DRY	DRY
13	HARYANA CHANDIGARH & DELHI	DRY	DRY	DRY	DRY	DRY	DRY	DRY
14	PUNJAB	DRY	DRY	DRY	DRY	DRY	DRY	DRY
15	HIMACHAL PRADESH	DRY	DRY	DRY	ISOL	DRY	DRY	DRY
16	JAMMU & KASHMIR AND LADAKH	DRY	DRY	DRY	SCT	DRY	DRY	DRY
17	WEST RAJASTHAN	DRY	DRY	DRY	DRY	DRY	DRY	DRY
18	EAST RAJASTHAN	DRY	DRY	ISOL	ISOL	DRY	DRY	DRY
19	WEST MADHYA PRADESH	ISOL	ISOL	ISOL	ISOL	DRY	DRY	DRY
20	EAST MADHYA PRADESH	DRY	ISOL	ISOL	ISOL	ISOL	DRY	DRY
21	GUJARAT REGION	ISOL	ISOL	ISOL	ISOL	DRY	DRY	DRY
22	SAURASHTRA & KUTCH	ISOL	ISOL	ISOL	ISOL	DRY	DRY	DRY
23	KONKAN & GOA	ISOL	ISOL	ISOL	ISOL	ISOL	ISOL	ISOL
24	MADHYA MAHARASHTRA	ISOL	SCT	SCT	ISOL	ISOL	ISOL	ISOL
25	MARATHAWADA	ISOL	SCT	SCT	ISOL	ISOL	ISOL	ISOL
26	VIDARBHA	DRY	ISOL	SCT	ISOL	ISOL	ISOL	DRY
27	CHHATTISGARH	ISOL	ISOL	ISOL	ISOL	ISOL	ISOL	DRY
28	COASTAL ANDHRA PRADESH & YANAM	ISOL	ISOL	ISOL	SCT	SCT	ISOL	ISOL
29	TELANGANA	DRY	ISOL	ISOL	SCT	FWS	FWS	ISOL
30	RAYALASEEMA	DRY	ISOL	ISOL	FWS	FWS	SCT	ISOL
31	TAMILNADU PUDUCHERRY & KARAIKAL	ISOL	ISOL	SCT	SCT	SCT	SCT	ISOL
32	COASTAL KARNATAKA	ISOL	ISOL	ISOL	FWS	WS	WS	SCT
33	NORTH INTERIOR KARNATAKA	ISOL	ISOL	ISOL	ISOL	SCT	SCT	SCT
34	SOUTH INTERIOR KARNATAKA	ISOL	ISOL	ISOL	SCT	WS	FWS	ISOL
35	KERALA & MAHE	ISOL	SCT	SCT	WS	WS	WS	FWS
36	LAKSHADWEEP	DRY	DRY	DRY	DRY	DRY	DRY	SCT

- As the lead period increases forecast accuracy decreases.





- Action may be taken based on **ORANGE AND RED COLOUR** warnings.
- Vulnerable regions likely urban and hilly areas action may be initiated for heavy rainfall warning.
- As the lead period increases forecast accuracy decreases.

Detailed district wise Multi Hazard weather warning for next five days available at <https://mausam.imd.gov.in/responsive/districtWiseWarningGIS.php>

Weather forecast over Delhi/NCR during 31st Mar. to 03rd Apr. 2025**Past Weather:**

There has been fall in minimum temperature upto 02°C and rise in maximum temperature upto 03°C over Delhi/NCR during the past 24 hours. The maximum and minimum temperatures over Delhi are in the range of 31 to 34°C and 13 to 15°C respectively. The minimum temperature was below normal upto 04°C and maximum temperature was near normal at most places. Mainly clear sky conditions with predominant surface wind from the northwest direction with wind speeds less than 18 to 20 kmph prevailed during the past 24 hours. Mainly clear sky conditions with wind speed less than 10 kmph from the southwest direction prevailed over the region in the forenoon today.

Weather Forecast:

31.03.2025: Mainly clear sky. The maximum temperature over Delhi is likely to be in the range of 33 to 35°C. The predominant surface wind will likely be from the northwest direction with a wind speed of less than 14 kmph till evening. It would increase thereafter becoming less than 16 kmph from the northwest direction during the night.

01.04.2025: Mainly clear sky. The maximum and minimum temperatures over Delhi are likely to be in the range of 34 to 36°C and 16 to 18°C respectively. The predominant surface wind will likely be from the northwest direction with a wind speed of 08-10 kmph during morning hours. The wind speed will gradually increase thereafter becoming 16-18 kmph from the northwest direction during the afternoon. It will decrease becoming less than 10 kmph from the northwest direction during evening and night.

02.04.2025: Mainly clear sky. The maximum and minimum temperatures over Delhi are likely to be in the range of 35 to 37°C and 16 to 18°C respectively. The predominant surface wind will likely be from the northwest direction with a wind speed of 06-08 kmph during morning hours. The wind speed will gradually increase becoming 08-10 kmph from the northwest direction in the afternoon. It will decrease becoming less than 06 kmph from the northeast direction during evening and night.

03.04.2025: Partly cloudy sky. The maximum and minimum temperatures over Delhi are likely to be in the range of 36 to 38°C and 17 to 19°C respectively. The predominant surface wind will likely be from the southeast direction with a wind speed of 04-06 kmph during morning hours. The wind speed will gradually increase becoming 06-08 kmph from the southeast direction in the afternoon. It will decrease becoming less than 06 kmph from the northeast direction during evening and night.

Impact expected and action suggested due Heat Wave conditions over Saurashtra & Kutch on 31st March & 01st April.

Orange alert Areas

- High temperature & increased likelihood of heat illness symptoms in people who are either exposed to sun for a prolonged period or doing heavy work.
- High health concern for vulnerable people e.g. infants, elderly, people with chronic diseases.
- Avoid heat exposure– keep cool. Avoid dehydration.
- Drink sufficient water- even if not thirsty.
- Use ORS, homemade drinks like lassi, torani (rice water), lemon water, buttermilk, etc. to keep yourself hydrated.

Yellow alert Areas

- Moderate temperature & heat is tolerable for general public but moderate health concern likely for vulnerable people e.g. infants, elderly, people with chronic diseases.
- Avoid heat exposure.
- Wear lightweight, light colour, loose, cotton clothes.
- Cover your head, use a cloth, hat or umbrella.

Impact expected and action suggested due to isolated thunderstorm with lightning/gusty winds & Hailstorm over central and adjoining East & Peninsular India during 01st -04th April.

Impact expected:

- Strong wind/hail may damage plantation, horticulture and standing crops.
- Hail may injure people and cattle at open places.
- Partial damage to vulnerable structures due to strong winds.
- Minor damage to kutcha houses/walls and huts.
- Loose objects may fly.

Action suggested:

- Stay indoors, close windows & doors and avoid travel if possible.
- Take safe shelters; do not take shelter under trees.
- Do not lie on concrete floors and do not lean against concrete walls.
- Unplug electrical/ electronic appliances.
- Immediately get out of water bodies.
- Keep away from all the objects that conduct electricity.

Agromet advisories for likely impact of Hailstorm, Heavy Rainfall, Strong Surface Winds

- In **Madhya Maharashtra, Marathwada, Vidarbha, Coastal and North Interior Karnataka, Telangana, Madhya Pradesh, Chhattisgarh, Odisha and Jharkhand**, immediately harvest the matured crops, fruits and vegetables and shift the harvested produce in safer places or cover the

produce with tarpaulin sheets in the fields to avoid the adverse impact of likely hailstorm. Use hail net and hail caps to prevent mechanical damage in orchards due to hailstorms.

- In **Tamilnadu, Kerala, Coastal and South Interior Karnataka**, make provision to drain out excess water from standing crop and vegetable fields.
- Provide mechanical support to horticultural crops and staking to vegetables to avoid lodging.

Livestock/ poultry

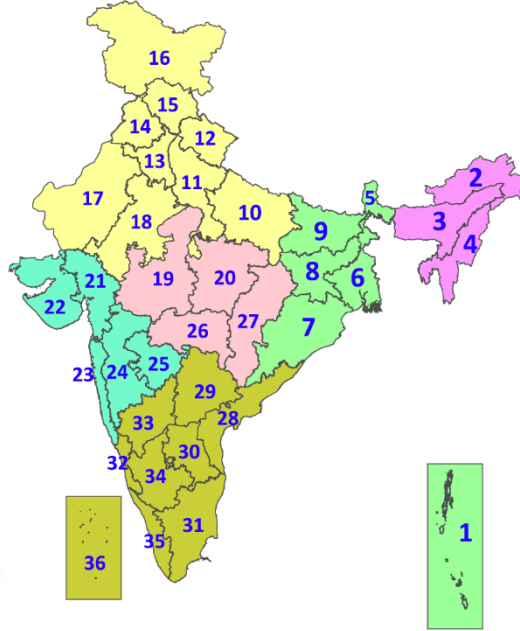
- Keep the animals inside the shed during heavy rainfall/hailstorm and provide them balanced feed.
- Store feed and fodder in a safe place to prevent spoilage.

Legends & abbreviations:

- ❖ **Heavy Rain:**64.5-115.5mm; **Very Heavy Rain:**115.6-204.4mm; **Extremely Heavy Rain:** >204.4mm.
- ❖ **Obsy:** Observatory; **AWS:** Automatic Weather Station; **ARG:** Automatic Rain Gauge; **dist:** District; **NH:** National Highway; **KVK:** Krishi Vigyan Kendra; **DVC:** Damodar Valley Corporation; **PTO:** Part Time Office, **Aero:** Aerodrome, **IAF:** Indian Air Force.
- ❖ **Region wise classification of meteorological Sub-Divisions:**
 - **Northwest India:** Western Himalayan Region (Jammu-Kashmir-Ladakh-Gilgit-Baltistan-Muzaffarabad, Himachal Pradesh and Uttarakhand); Punjab, Haryana-Chandigarh-Delhi; West Uttar Pradesh, East Uttar Pradesh, West Rajasthan and East Rajasthan.
 - **Central India:** West Madhya Pradesh, East Madhya Pradesh, Vidarbha and Chhattisgarh.
 - **East India:** Bihar, Jharkhand, Sub-Himalayan West Bengal & Sikkim; Gangetic West Bengal, Odisha and Andaman & Nicobar Islands.
 - **Northeast India:** Arunachal Pradesh, Assam & Meghalaya and Nagaland, Manipur, Mizoram & Tripura.
 - **West India:** Gujarat Region, Saurashtra & Kutch, Konkan & Goa, Madhya Maharashtra and Marathawada.
 - **South India:** Coastal Andhra Pradesh & Yanam, Telangana, Rayalaseema, Coastal Karnataka, North Interior Karnataka, South Interior Karnataka, Kerala & Mahe, Tamil Nadu, Puducherry & Karaikal and Lakshadweep.

LEGENDS

1. अंडमान और निकोबार द्वीपसमूह
2. अरुणाचल प्रदेश
3. असम और मेघालय
4. नागालैंड, मणिपुर, मिजोरम और त्रिपुरा
5. उप-हिमालयी पश्चिम बंगाल और सिक्किम
6. गंगीय पश्चिम बंगाल
7. ओडिशा
8. झारखंड
9. बिहार
10. पूर्वी उत्तर प्रदेश
11. पश्चिम उत्तर प्रदेश
12. उत्तराखंड
13. हरियाणा, चंडीगढ़ और दिल्ली
14. पंजाब
15. हिमाचल प्रदेश
16. जम्मू और कश्मीर और लद्दाख
17. पश्चिम राजस्थान
18. पूर्वी राजस्थान
19. पश्चिम मध्य प्रदेश
20. पूर्वी मध्य प्रदेश
21. गुजरात
22. सौराष्ट्र
23. कोंकण और गोवा
24. मध्य महाराष्ट्र
25. मराठवाड़ा
26. विदर्भ
27. छत्तीसगढ़
28. तटीय आंध्र प्रदेश और यनम
29. तेलंगाना
30. रायलसीमा
31. तमिलनाडु, पुडुचेरी और कराईकल
32. तटीय कर्नाटक
33. आंतरिक उत्तरी कर्नाटक
34. आंतरिक दक्षिणी कर्नाटक
35. केरल और माहे
36. लक्षद्वीप



1. Andaman & Nicobar Islands
2. Arunachal Pradesh
3. Assam & Meghalaya
4. Nagaland, Manipur, Mizoram & Tripura
5. Sub-Himalayan West Bengal & Sikkim
6. Gangetic West Bengal
7. Odisha
8. Jharkhand
9. Bihar
10. East Uttar Pradesh
11. West Uttar Pradesh
12. Uttarakhand
13. Haryana, Chandigarh & Delhi
14. Punjab
15. Himachal Pradesh
16. Jammu & Kashmir and Ladakh
17. West Rajasthan
18. East Rajasthan
19. West Madhya Pradesh
20. East Madhya Pradesh
21. Gujarat
22. Saurashtra
23. Konkan & Goa
24. Madhya Maharashtra
25. Marathwada
26. Vidarbha
27. Chhattisgarh
28. Coastal Andhra Pradesh & Yanam
29. Telangana
30. Rayalaseema
31. Tamilnadu, Puducherry & Karaikal
32. Coastal Karnataka
33. North Interior Karnataka
34. South Interior Karnataka
35. Kerala & Mahe
36. Lakshadweep

SPATIAL DISTRIBUTION (% of Stations reporting)

% Stations	Category	% Stations	Category
76-100	Widespread (WS/Most Places)	26-50	Scattered (SCT/A Few Places)
51-75	Fairly Widespread (FWS/Many Places)	1-25	Isolated (ISOL)

- | | | |
|----------------------|----------------------|--------------|
| Fog | Heavy Snow | Cold Wave |
| Heavy Rain | Dust Storm | Cold Day |
| Very Heavy Rain | Heat Wave | Ground Frost |
| Extremely Heavy Rain | Warm Night | |
| Thunder & Lightning | Hot Day | |
| Hailstorm | Hot & Humid | |
| Dust Raising Winds | Strong Surface Winds | |

COLOUR CODED WARNING

No Warning (No Action)
Watch (Be Aware)
Alert (Be Prepared To Take Action)
Warning (Take Action)

Probabilistic Forecast

Terms	Probability of Occurrence (%)
Unlikely	< 25
Likely	25 - 50
Very Likely	50 - 75
Most Likely	> 75

* Red colour warning does not mean "Red Alert", Red colour warning means "Take Action".
Forecast and Warning for any day is valid from 0830 hours IST of day till 0830 hours IST of next day.
For more details, kindly visit <https://mausam.imd.gov.in> or contact: 011-2434-4599
(Service to the Nation since 1875)

DEFINITION/CRITERIA

Rain/ Snow *	Heavy: 64.5 to 115.5 mm/cm * Very Heavy: 115.6 to 204.4 mm/cm * Extremely Heavy: > 204.4 mm/cm *
Heat Wave	When maximum temperature of a station reaches $\geq 40^{\circ}\text{C}$ for plains and $\geq 30^{\circ}\text{C}$ for hilly regions (a) Based on Departure from normal Heat Wave: Maximum Temperature Departure from normal 4.5°C to 6.4°C . Severe Heat Wave: Maximum Temperature Departure from normal $\geq 6.5^{\circ}\text{C}$ (b). Based on Actual maximum temperature Heat Wave: When actual maximum temperature $\geq 45^{\circ}\text{C}$. Severe Heat Wave: When actual maximum temperature $\geq 47^{\circ}\text{C}$ (c). Criteria for heat wave for coastal stations When maximum temperature departure is $> 4.5^{\circ}\text{C}$ from normal. Heat Wave may be described provided maximum temperature $\geq 37^{\circ}\text{C}$
Warm Night	When maximum temperature remains 40°C Warm Night: When minimum temperature departure 4.5°C to 6.4°C . Severe Warm Night: When minimum temperature departure $> 6.4^{\circ}\text{C}$.
Cold Wave	When minimum temperature of a station $\leq 10^{\circ}\text{C}$ for plains and $\leq 0^{\circ}\text{C}$ for hilly regions. (a). Based on departure Cold Wave: Minimum Temperature Departure from normal -4.5°C to -6.4°C . Severe Cold Wave: Minimum Temperature Departure from normal $\leq -6.5^{\circ}\text{C}$ (b) Based on actual Minimum Temperature (for Plains only) Cold Wave : When Minimum Temperature is $\leq 4.0^{\circ}\text{C}$ Severe Cold Wave: When Minimum Temperature is $\leq 2.0^{\circ}\text{C}$ (c) For Coastal Stations When Minimum Temperature departure is $\leq -4.5^{\circ}\text{C}$ & actual Minimum Temperature is $\leq 15^{\circ}\text{C}$
Cold Day	When minimum temperature of a station $\leq 10^{\circ}\text{C}$ for plains and $\leq 0^{\circ}\text{C}$ for hilly regions Based on departure Cold Day: Maximum Temperature Departure from normal -4.5°C to -6.4°C . Severe Cold Day: Maximum Temperature Departure from normal $\leq -6.5^{\circ}\text{C}$
Fog	Phenomenon of small droplets suspended in air and the horizontal visibility $< 1\text{km}$ Moderate Fog: When the visibility between 500-200 metres Dense Fog: when the visibility between 50- 200 metres Very Dense Fog: when the visibility < 50 metres
Thunderstorm	Sudden electrical discharges manifested by a flash of light (Lightning) and a sharp rumbling sound (thunder)
Dust/Sand Storm	An ensemble of particles of dust or sand energetically lifted to great heights by a strong and turbulent wind.
Frost	Ice deposits on ground Air temperature $\leq 4^{\circ}\text{C}$ (over Plains)
Squall	A strong wind that rises suddenly, lasts for atleast 1 minute. Moderate: Wind speed 52-61 kmph Severe: Wind speed 62-87 kmph Very Severe: Wind speed > 87 kmph
Sea State	Effect of various waves in the sea over specific area Rough to very rough: Wind speed 41-62 kmph (22-33 knots) & Wave height 2.5-6 metre High to very high: Wind speed 63-117 kmph (34-63 knots) & Wave height 6-14 metre Phenomenal: Wind speed > 117 kmph (> 63 knots) & Wave height > 14 metre
Cyclone	Cyclonic Storm: Wind speed 62-87 kmph (34-47 knots) Severe Cyclonic Storm: Wind speed 88-117 kmph (48-63 knots) Very Severe Cyclonic Storm: Wind speed 118-165 kmph (64 - 89 knots) Extremely Severe Cyclonic Storm: Wind speed 166-220 kmph (90 -119 knots) Super Cyclone Strom: Wind speed > 220 kmph (> 119 knots)

* Red colour warning does not mean "Red Alert", Red colour warning means "Take Action".
 Forecast and Warning for any day is valid from 0830 hours IST of day till 0830 hours IST of next day.
 For more details, kindly visit <https://mausam.imd.gov.in> or contact: 011-2434-4599
 (Service to the Nation since 1875)

Hot and Humid: When maximum temperatures remain 3°C above normal along with the above normal relative humidity.