



India Meteorological Department

(Ministry of Earth Sciences)

BULLETIN NO. : 04 (ARB/03/2020)

TIME OF ISSUE: 0800 HOURS IST

DATED: 17.10.2020

FROM: INDIA METEOROLOGICAL DEPARTMENT (FAX NO. 24643965/24699216/24623220)

TO: CONTROL ROOM, NDM, MINISTRY OF HOME AFFAIRS (FAX.NO. 23093750)

CONTROL ROOM NDMA (FAX.NO. 26701729)

CABINET SECRETARIAT (FAX.NO.23012284, 23018638)

PS TO HON'BLE MINISTER FOR S & T AND EARTH SCIENCES (FAX NO.23316745)

SECRETARY, MOES, (FAX NO. 24629777)

H.Q. (INTEGRATED DEFENCE STAFF AND CDS) (FAX NO. 23005137/23005147)

DIRECTOR GENERAL, DOORDARSHAN (23385843)

DIRECTOR GENERAL, AIR (23421105, 23421219)

PIB MOES (FAX NO. 23389042)

UNI (FAX NO. 23355841)

D.G. NATIONAL DISASTER RESPONSE FORCE (NDRF) (FAX NO. 26105912, 2436 3260)

DIRECTOR, PUNCTUALITY, INDIAN RAILWAYS (FAX NO. 23388503)

CHIEF SECRETARY, GOVT. OF MAHARASHTRA (FAX NO. 022 22028594)

CHIEF SECRETARY, GUJARAT (FAX NO.079-23250305)

CHIEF SECRETARY, DAMAN, DIU, NAGAR HAVELI (FAX NO.0260-2642702)

CHIEF SECRETARY, GOA (FAX NO. 0832-2415201)

CHIEF SECRETARY, KARNATAKA (FAX NO. 080-22256360)

CHIEF SECRETARY, KERALA (FAX NO. 0471-2327176)

CHIEF SECRETARY, LAKSHADWEEP ISLANDS (FAX NO. 04896-262184)

Sub: Well marked low pressure area over East Central & adjoining Northeast Arabian Sea

The well marked low pressure area over East Central & adjoining Northeast Arabian off South Gujarat coast moved west-northwestwards and lay centred over **East Central & adjoining Northeast Arabian Sea** at 0530 hrs IST of today, the 17th October 2020.

It is very likely to move further west-northwestwards and concentrate into a Depression over eastcentral & adjoining northeast Arabian Sea during next 12 hours.

Warnings:

(i) Rainfall

- ✓ Light to moderate rainfall at a few places very likely over coastal Districts of Saurashtra during next 24 hours.

Spatial rainfall distribution: Isolated: ≤25%, A few: 26-50%, Many: 51-75%, Most: 76-100%

Rainfall amount (mm): Heavy rain: 64.5 – 115.5, Very heavy rain: 115.6 – 204.4, Extremely heavy rain: 204.5 or more.

(ii) Wind warning

- ✓ Strong wind speed reaching 40-50 kmph gusting to 60 kmph likely to prevail over east central and adjoining northeast Arabian Sea during next 12 hours; 25-35 kmph gusting to 45 kmph along & off south Gujarat and north Maharashtra coasts during next 24 hours.
- ✓ It would increase, becoming Squally wind speed reaching 45-55 kmph gusting to 65 kmph over east central and northeast Arabian Sea from 17th October evening and over central and adjoining northwest Arabian Sea on 18th October.

✓ **(iii) Sea condition**

Sea condition will be rough to very rough over eastcentral & adjoining northeast Arabian Sea on 17th October and over central and northwest Arabian Sea on 18th October; rough along & off south Gujarat and north Maharashtra coasts on 17th October.

(iv) Fishermen Warning

- ✓ Fishermen are advised not to venture into eastcentral & adjoining northeast Arabian Sea on 17th October and over central & northwest Arabian Sea on 18th October.

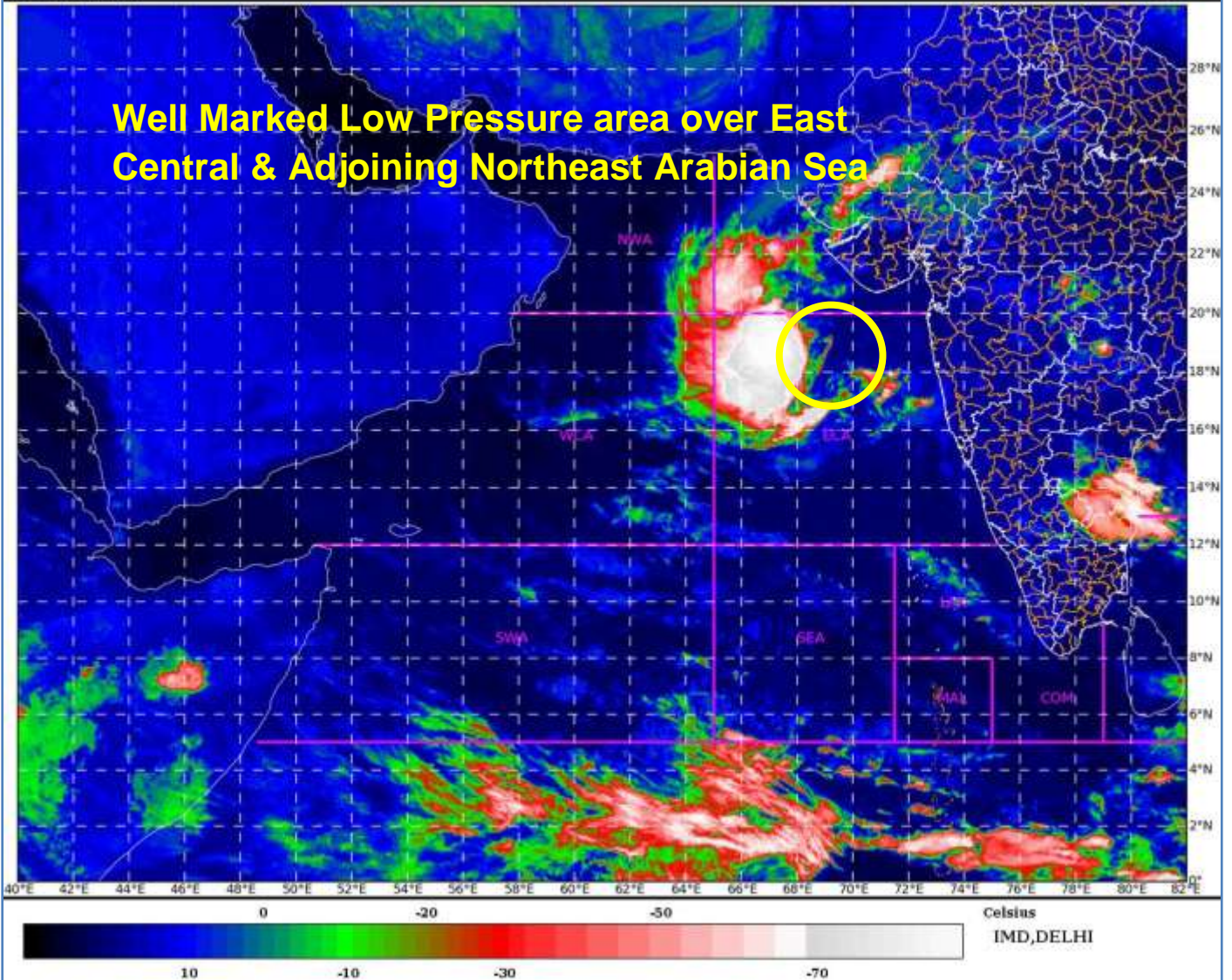
The next bulletin will be issued at 1130 hrs IST of 17th October, 2020.

**(Sunitha Devi S.)
Scientist-E, RSMC, New Delhi**

Copy to: ACWC Kolkata/Chennai/CWC Bhubaneswar/CWC Visakhapatnam/CWC
Thiruvananthapuram



Well Marked Low Pressure area over East Central & Adjoining Northeast Arabian Sea



Spatial rainfall distribution: Isolated: $\leq 25\%$, A few: 26-50%, Many: 51-75%, Most: 76-100%
Rainfall amount (mm): Heavy rain: 64.5 – 115.5, Very heavy rain: 115.6 – 204.4, Extremely heavy rain: 204.5 or more.



OBSERVED AND FORECAST TRACK OF WELL MARKED LOW PRESSURE AREA OVER EASTCENTRAL & ADJOINING NORTHEAST ARABIAN SEA BASED ON 0000UTC OF 17TH OCT, 2020



DATE/TIME IN UTC
 IST=UTC + 0530
L: LOW PRESSURE AREA
WML: WELL MARKED LOW PRESSURE AREA
D: DEPRESSION (17-27 KT)
DD: DEEP DEPRESSION (28-33 KT)
CS: CYCLONIC STORM (34-47 KT)
SCS: SEVERE CYCLONIC STORM (48-63KT)
VSCS: VERY SEVERE CYCLONIC STORM (64-89 KT)
ESCS: EXTREMELY SEVERE CYCLONIC STORM (90-119 KT)
SuCS: SUPER CYCLONIC STORM (≥20 KT)

- LESS THAN 34 KT
- 34-47 KT
- ≥ 48 KT
- OBSERVED TRACK
- FORECAST TRACK
- CONE OF UNCERTAINTY

Spatial rainfall distribution: Isolated: ≤25%, A few: 26-50%, Many: 51-75%, Most: 76-100%
 Rainfall amount (mm): Heavy rain: 64.5 – 115.5, Very heavy rain: 115.6 – 204.4, Extremely heavy rain: 204.5 or more.