



**India Meteorological Department**

**(Ministry of Earth Sciences)**

**BULLETIN NO. : 08 (ARB/03/2020)**

**TIME OF ISSUE: 0740 HOURS IST**

**DATED: 18.10.2020**

**FROM: INDIA METEOROLOGICAL DEPARTMENT (FAX NO. 24643965/24699216/24623220)**

**TO: CONTROL ROOM, NDM, MINISTRY OF HOME AFFAIRS (FAX.NO. 23093750)**

**CONTROL ROOM NDMA (FAX.NO. 26701729)**

**CABINET SECRETARIAT (FAX.NO.23012284, 23018638)**

**PS TO HON'BLE MINISTER FOR S & T AND EARTH SCIENCES (FAX NO.23316745)**

**SECRETARY, MOES, (FAX NO. 24629777)**

**H.Q. (INTEGRATED DEFENCE STAFF AND CDS) (FAX NO. 23005137/23005147)**

**DIRECTOR GENERAL, DOORDARSHAN (23385843)**

**DIRECTOR GENERAL, AIR (23421105, 23421219)**

**PIB MOES (FAX NO. 23389042)**

**UNI (FAX NO. 23355841)**

**D.G. NATIONAL DISASTER RESPONSE FORCE (NDRF) (FAX NO. 26105912, 2436 3260)**

**DIRECTOR, PUNCTUALITY, INDIAN RAILWAYS (FAX NO. 23388503)**

**CHIEF SECRETARY, GOVT. OF MAHARASHTRA (FAX NO. 022 22028594)**

**CHIEF SECRETARY, GUJARAT (FAX NO.079-23250305)**

**CHIEF SECRETARY, DAMAN, DIU, NAGAR HAVELI (FAX NO.0260-2642702)**

**CHIEF SECRETARY, GOA (FAX NO. 0832-2415201)**

**CHIEF SECRETARY, KARNATAKA (FAX NO. 080-22256360)**

**CHIEF SECRETARY, KERALA (FAX NO. 0471-2327176)**

**CHIEF SECRETARY, LAKSHADWEEP ISLANDS (FAX NO. 04896-262184)**

**Sub: Depression over Eastcentral & adjoining Northeast Arabian Sea**

The Depression over Eastcentral & adjoining Northeast Arabian Sea moved westwards with a speed of 07 kmph during past 06 hours and lay centered at 0530 hrs IST of 18<sup>th</sup> October 2020 over eastcentral & adjoining northeast Arabian Sea near Lat. 17.8°N and Long. 66.4°E, about 540 km southwest of Veraval (Saurashtra– Gujarat) and 1320 km east-northeast of Salalah (Oman).

It is very likely to move nearly westwards during next 24 hours and weaken gradually thereafter.

As the system is very likely to continue to move away from the Indian coast, no adverse weather associated with this system is likely over the west coast of India. However, Fishermen warning prevails over northern parts of central Arabian Sea and north Arabian Sea as specified below.

## Warnings:

### (i) Wind warning

- ✓ Squally wind speed reaching 45-55 kmph gusting to 65 kmph likely to prevail over northern parts of central Arabian Sea and northwest Arabian Sea on 18<sup>th</sup> October.

### (ii) Sea condition

- ✓ Sea condition will be rough to very rough over northern parts of central Arabian Sea and northwest Arabian Sea on 18<sup>th</sup> October.

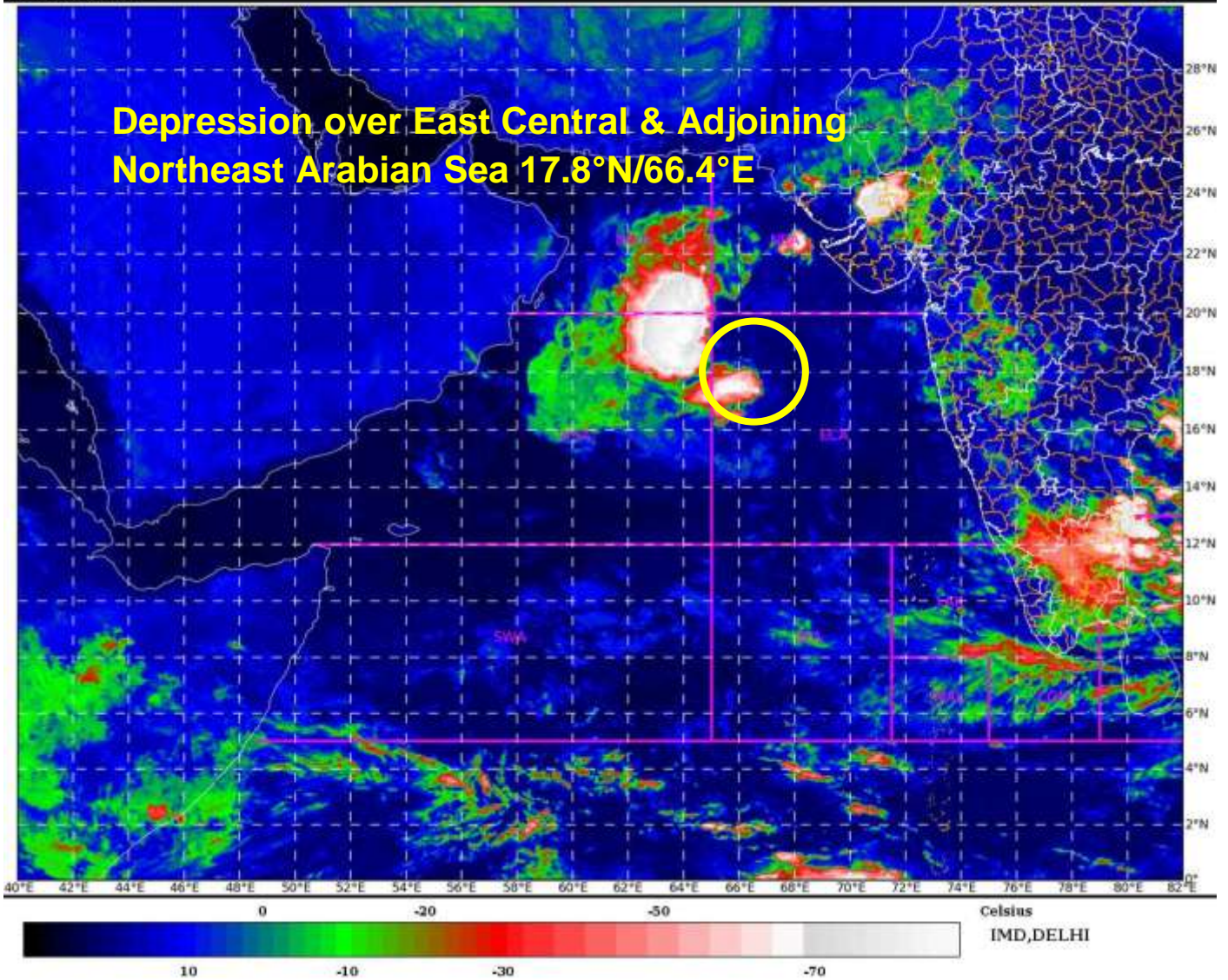
### (iii) Fishermen Warning

- ✓ Fishermen are advised not to venture into northern parts of central Arabian Sea and northwest Arabian Sea on 18<sup>th</sup> October.

*The next bulletin will be issued at 1130 hrs IST of today, the 18<sup>th</sup> October, 2020.*

**(Surendra Pratap Singh)  
Scientist-C, RSMC, New Delhi**

Copy to: ACWC    Kolkata/Chennai/CWC    Bhubaneswar/CWC    Visakhapatnam/CWC  
Thiruvananthapuram



**Spatial rainfall distribution: Isolated:  $\leq 25\%$ , A few: 26-50%, Many: 51-75%, Most: 76-100%**  
**Rainfall amount (mm): Heavy rain: 64.5 – 115.5, Very heavy rain: 115.6 – 204.4, Extremely heavy rain: 204.5 or more.**



# OBSERVED AND FORECAST TRACK OF DEPRESSION OVER EASTCENTRAL & ADJOINING NORTHEAST ARABIAN SEA BASED ON 0000 UTC OF 18<sup>TH</sup> OCT, 2020



DATE/TIME IN UTC  
IST=UTC + 0530  
L: LOW PRESSURE AREA  
WML: WELL MARKED LOW PRESSURE AREA  
D: DEPRESSION (17-27 KT)  
DD: DEEP DEPRESSION (28-33 KT)  
CS: CYCLONIC STORM (34-47 KT)  
SCS: SEVERE CYCLONIC STORM (48-63KT)  
VSCS: VERY SEVERE CYCLONIC STORM (64-89 KT)  
ESCS: EXTREMELY SEVERE CYCLONIC STORM (90-119 KT)  
SuCS: SUPER CYCLONIC STORM (≥20 KT)

-  LESS THAN 34 KT
-  34-47 KT
-  ≥ 48 KT
-  OBSERVED TRACK
-  FORECAST TRACK
-  CONE OF UNCERTAINTY

Spatial rainfall distribution: Isolated: ≤25%, A few: 26-50%, Many: 51-75%, Most: 76-100%  
Rainfall amount (mm): Heavy rain: 64.5 – 115.5, Very heavy rain: 115.6 – 204.4, Extremely heavy rain: 204.5 or more.