

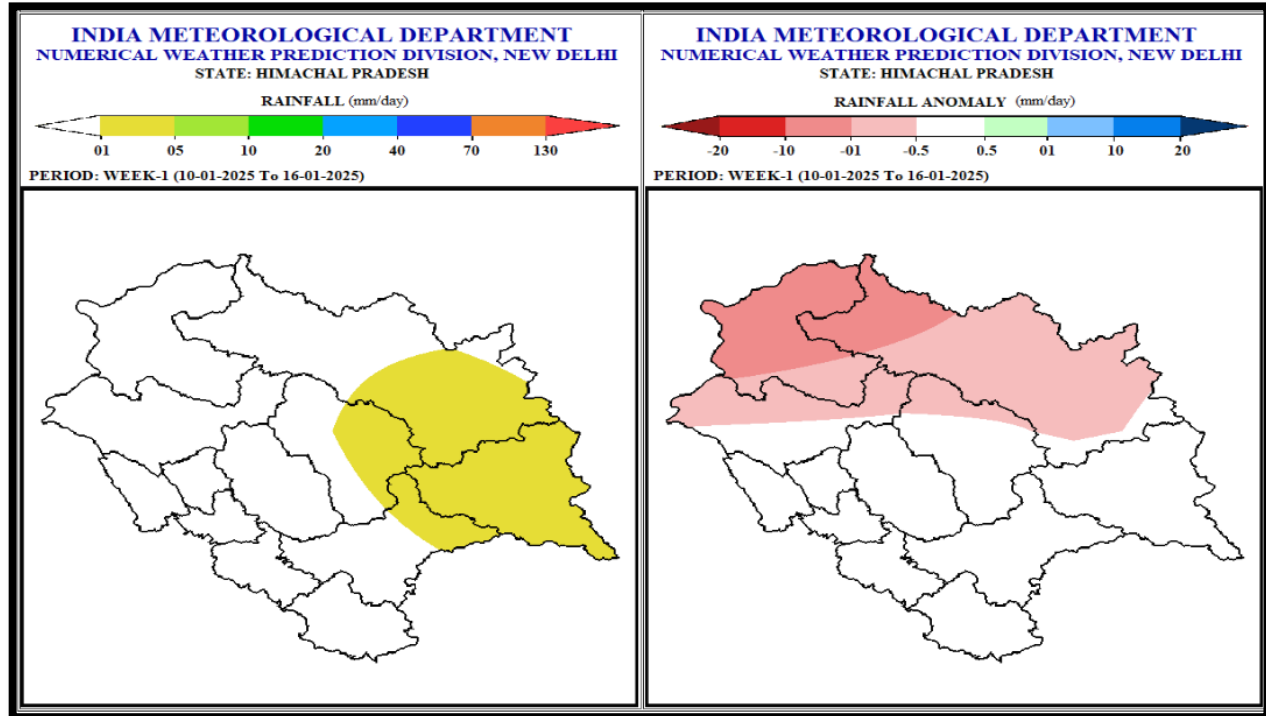
Extended Range Weather Forecast

Date:- 09.01.2025

Weather Forecasts and Warning for two weeks w.e.f. 10th January, 2025

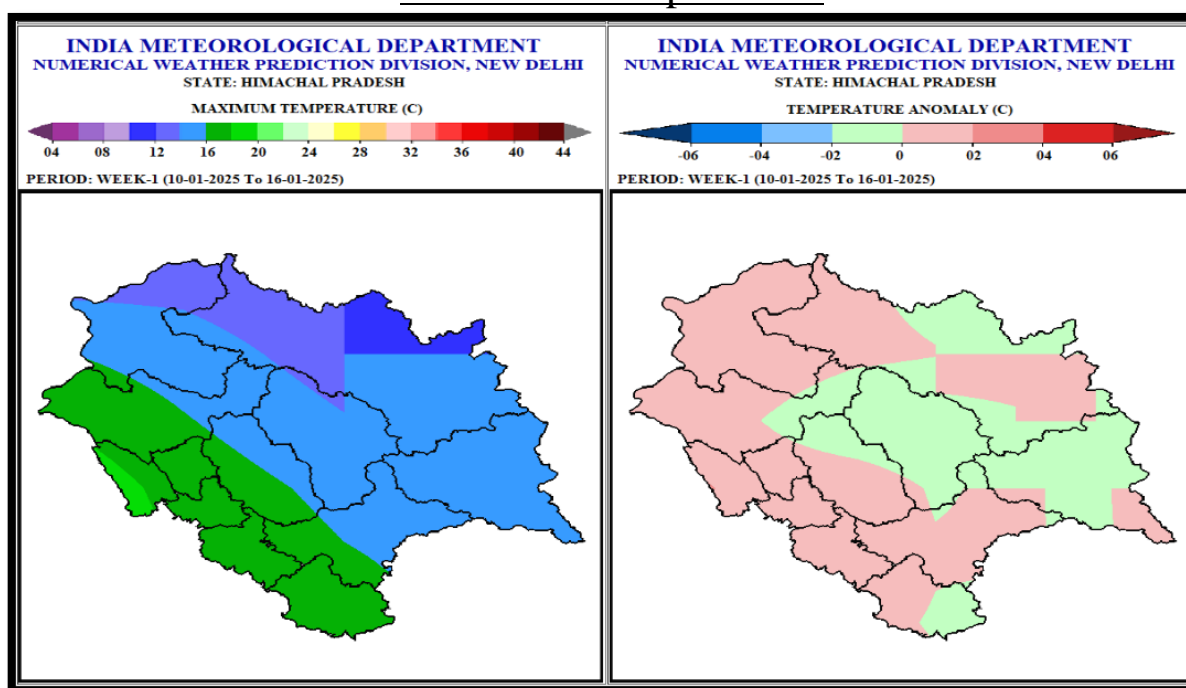
Week 1 (10th January 2025 – 16th January 2025)

Rainfall



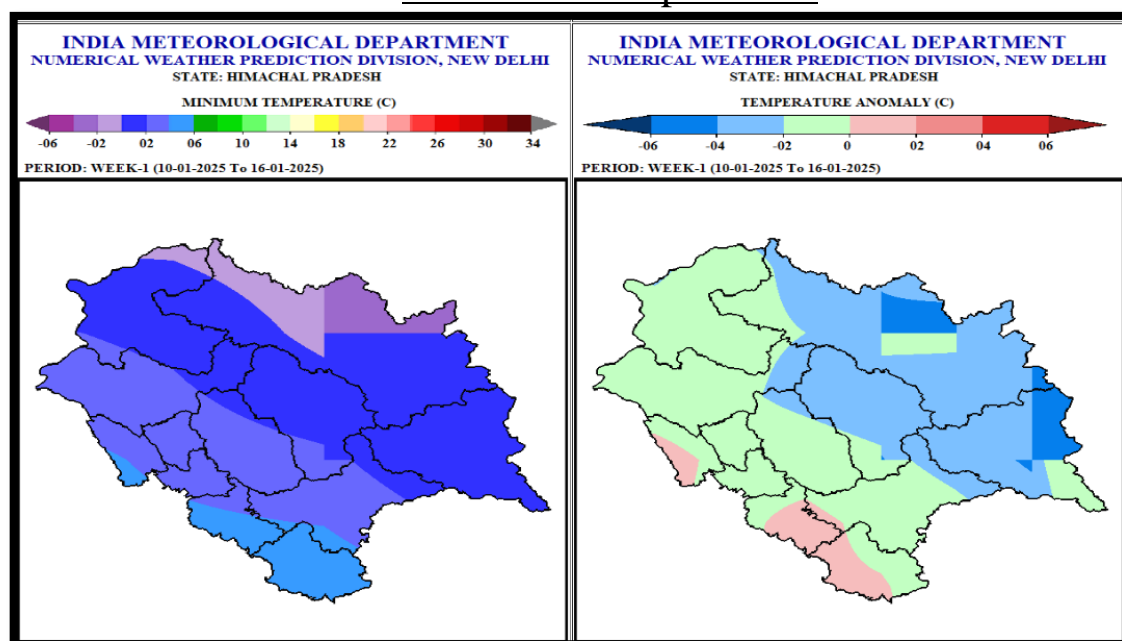
- Light rainfall/ snowfall over some parts of the state during some days of the week1.
- Rainfall anomaly very likely to be near normal over the most parts of the state except over some parts of Lahaul-Spiti and Chamba districts where rainfall anomaly likely to be below normal in the week 1.

Maximum Temperatures



- Maximum Temperatures are very likely to be in the range of 12-16°C over many parts of the high hills except some parts of Lahaul-Spiti district where it likely to be in the range of 10-16°C; in the range of 14-18°C over most parts of mid hills and in the range of 16-18°C over most parts of the lower hills/plains in the week 1.
- Maximum Temperatures very likely to be near normal over most parts of the state in the week 1.

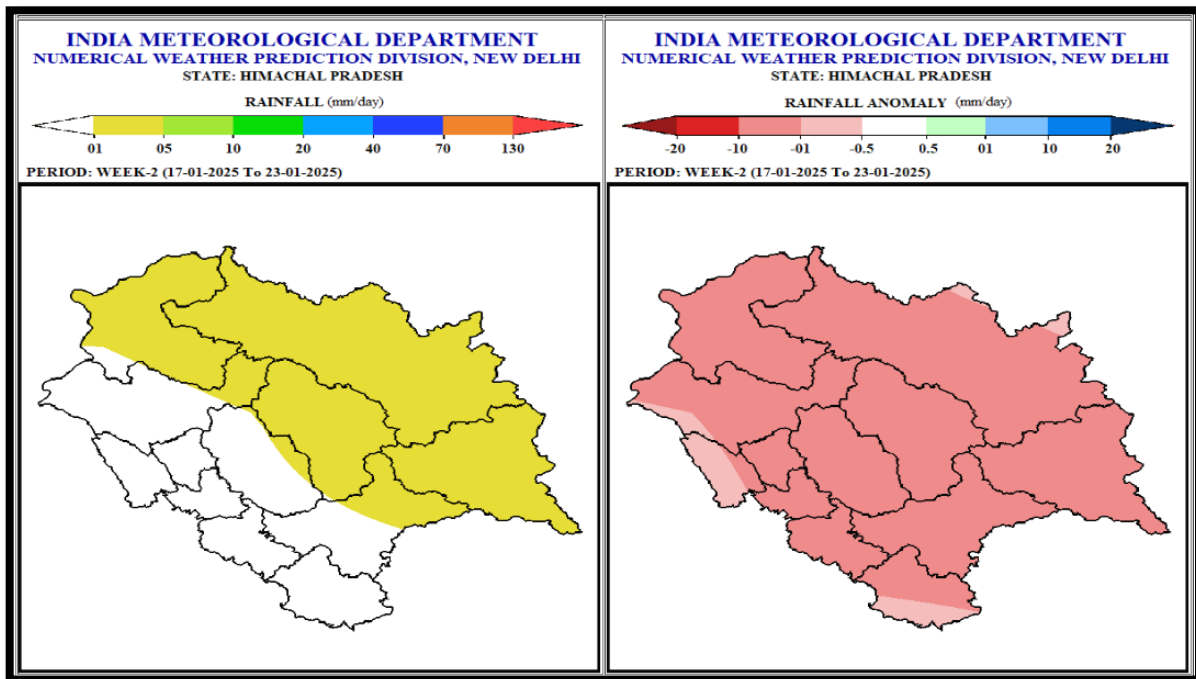
Minimum Temperatures



- Minimum Temperatures are very likely to be in the range of 2 to 6°C over many parts of lower hills/plains & mid hills and in the range of -2 to 2°C over many parts of high hills & adjoining mid hills during many days of the week 1.
- Minimum Temperatures are very likely to be near normal over most parts of the state except some parts of Lahaul-Spiti, Kinnaur and Kullu districts where they are likely to be below normal by 2 to 4°C in the week 1.

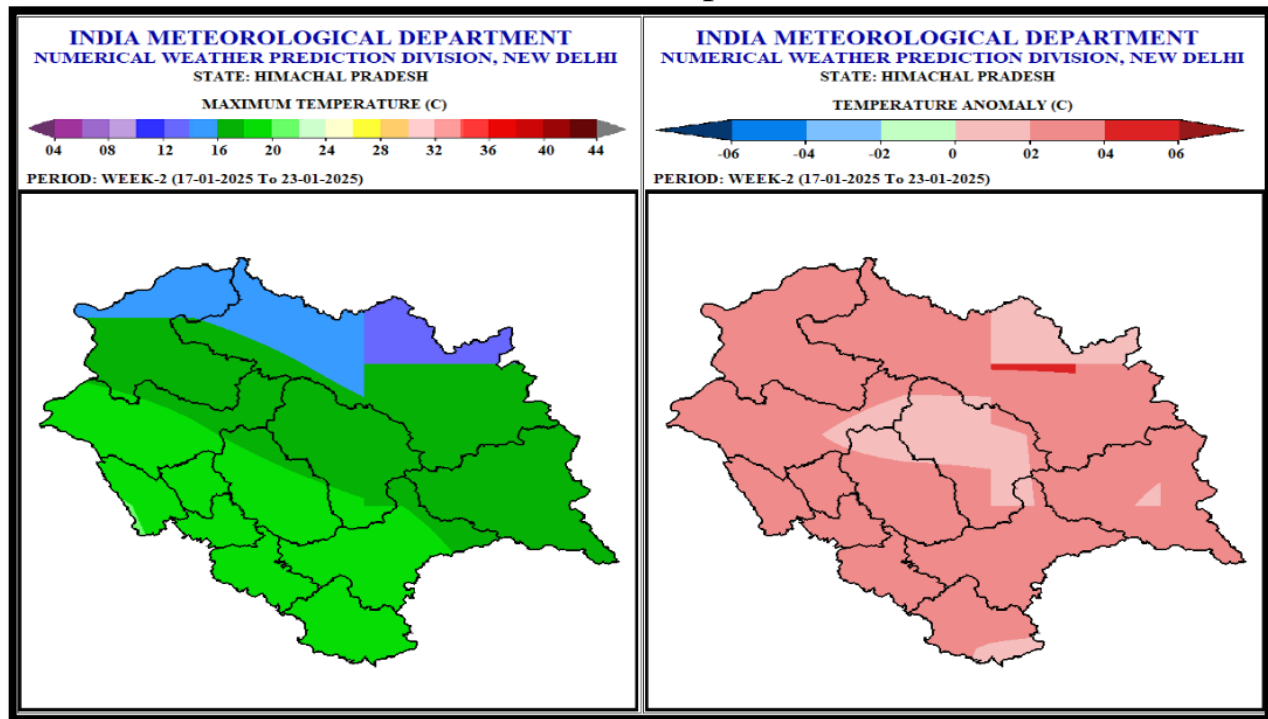
Week 2 (17th January 2025 – 23rd January 2025)

Rainfall



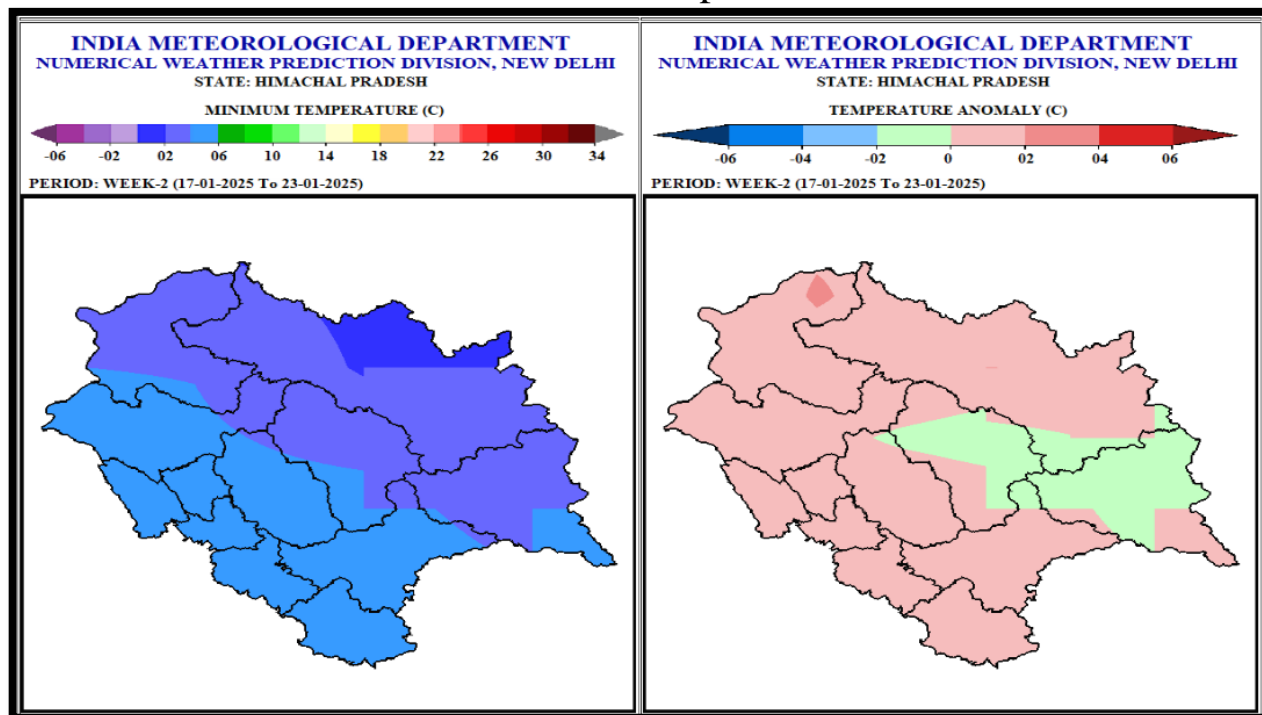
- Light to moderate precipitation likely over high hills & adjoining mid hills during some days of the week 2.
- Rainfall anomaly likely to be below normal over many parts of the state in the week 2.

Maximum Temperatures



- Maximum Temperatures are likely to be in the range of 16-18°C over most parts of the high hills except some parts of Lahaul-Spiti & Chamba districts where it likely to be in the range of 10-16°C; in the range of 16-20°C over most parts of mid hills & in the range of 18-20°C in the lower hills.
- Maximum Temperatures likely to be normal to above normal over many parts of the state in the week 2.

Minimum Temperatures



- Minimum Temperatures are likely to be in the range of 4 to 6°C over most parts of lower hills/plains & mid hills and in the range of 2 to 4°C over many parts of high hills & adjoining mid hills except some parts of Lahaul-Spiti where it likely to be in the range of 0 to -2°C during many days of the week 2.
- Minimum Temperatures are very likely to be near normal over the state in the week 2.

Outlook for next 2 weeks

Week	Max. Temp	Min. Temp.	Rainfall Anomaly
Week 3 24th January to 30th January	Normal to Above Normal	Normal	Normal to Below Normal
Week 4 31st January to 6th February	Normal	Normal to Below Normal	Mainly Normal

Regards
Met Centre Shimla

For latest Weather Bulletin and warnings kindly visit following links

Website: <https://mausam.imd.gov.in/shimla/>

Facebook: <https://www.facebook.com/profile.php?id=100018411811087>

Twitter: <https://twitter.com/himachalmausam>

IG: www.instagram.com/metcentresml/