

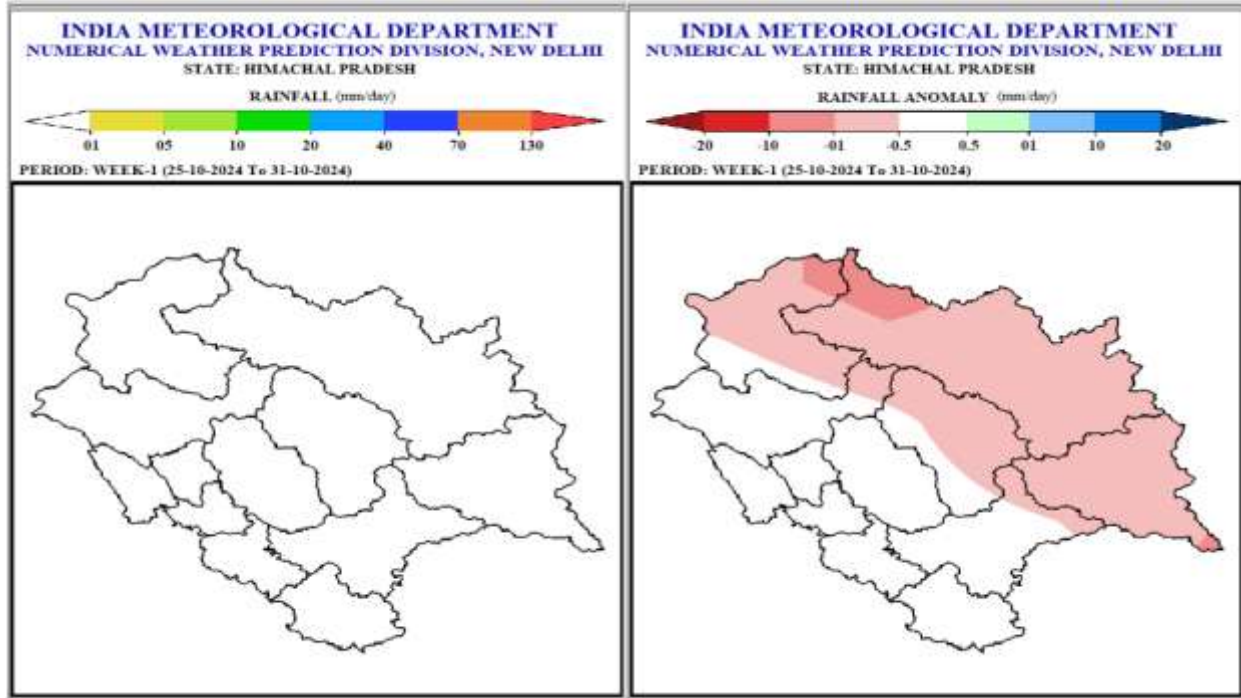
## Extended Range Weather Forecast

Date:-24.10.2024

Weather Forecasts and Warning for two weeks w.e.f. 25<sup>th</sup> October, 2024

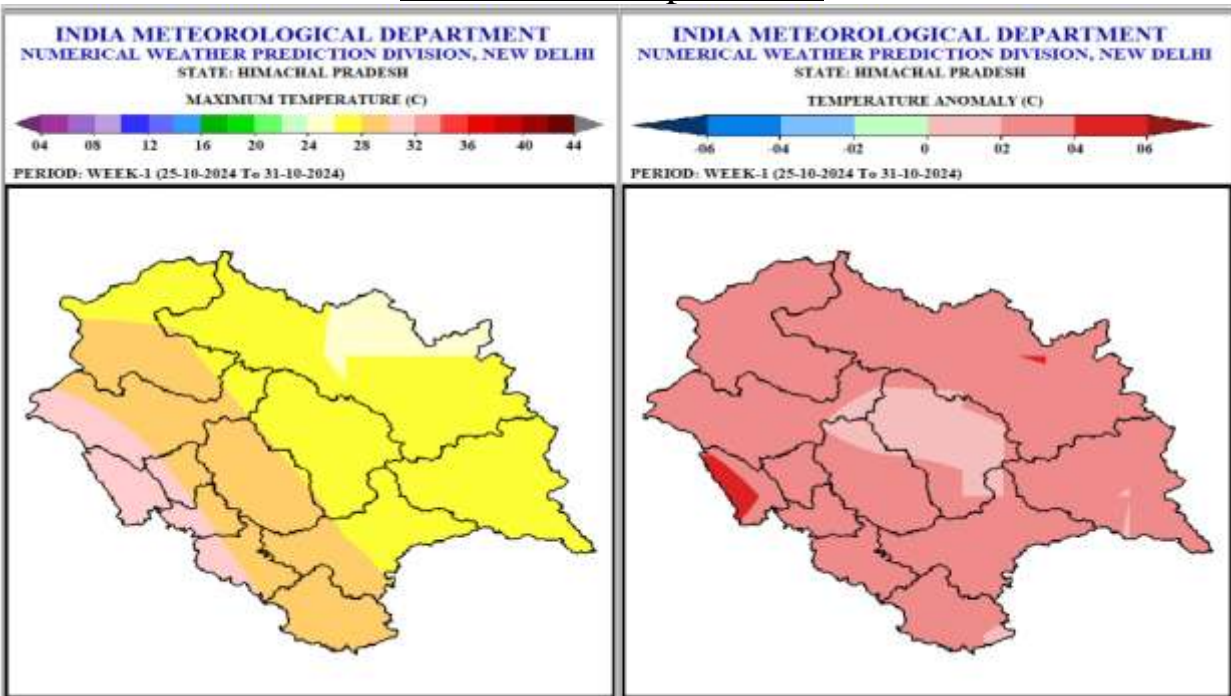
Week 1(25<sup>th</sup>October – 31<sup>th</sup> October) 2024

### Rainfall



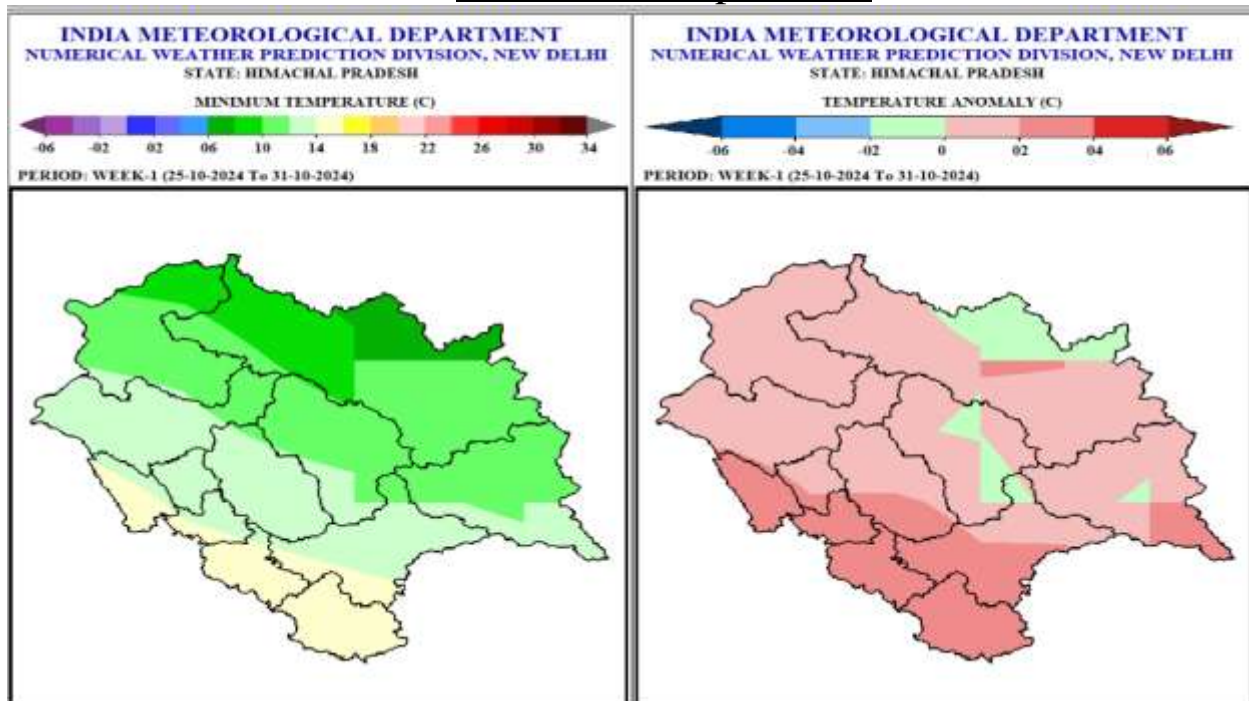
- Mainly dry weather likely over most parts of the state.
- Rainfall very likely to be normal to near normal over the Most parts of the State in the week 1.

## Maximum Temperatures



- Maximum Temperatures are very likely to be in the range of 24-28°C over many parts of high hills, in the range of 26-30°C over most parts of mid hills and in the range of 28-32°C over many parts of lower hills/plains in the week 1.
- Maximum Temperatures very likely to be above normal by 2-4°C over most parts of the state except some parts of the Kullu where they are likely to be near normal and some parts of the Una where they are above normal by 4-6°C in the week 1.

## • Minimum Temperatures



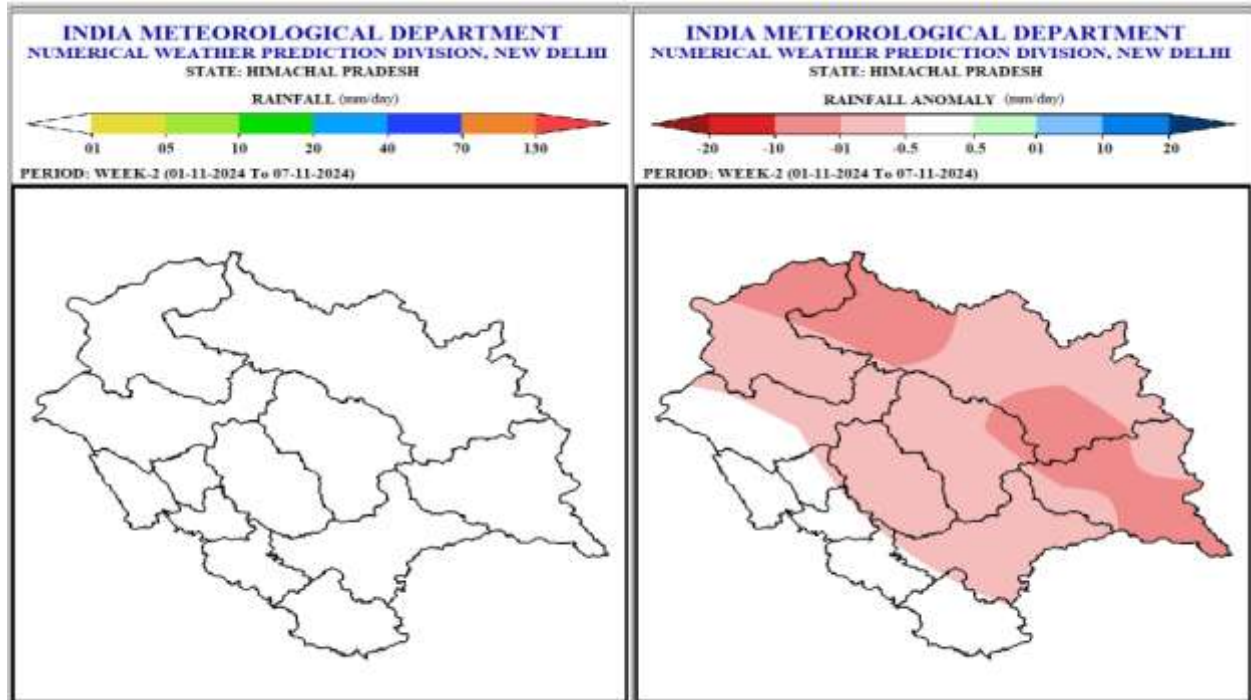
- Minimum Temperatures are very likely to be in the range of 12-16°C over most parts of lower hills/plains, in the range of 10-14°C over most parts of mid hills and in the range of 08-12°C over many parts of the high hills except some parts of Lahaul-Spiti where they are very likely to be in the range of 6-8°C in the

week 1.

- Minimum Temperatures is very likely to be near normal over most part of the high and mid hills.They are very likely to be above normal by 2-4°C over some parts of lower hills and near normal to the rest part of lower hills in the week 1.

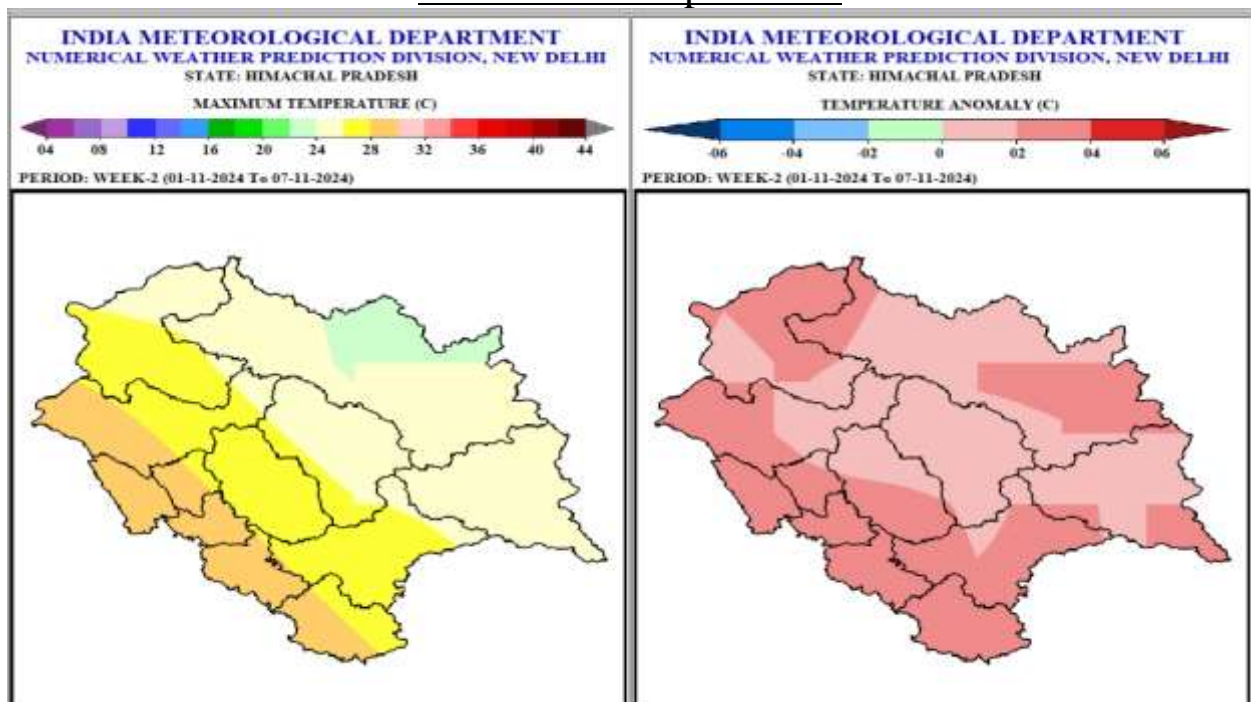
## Week 2(1<sup>st</sup>November –7<sup>th</sup> November) 2024

### Rainfall



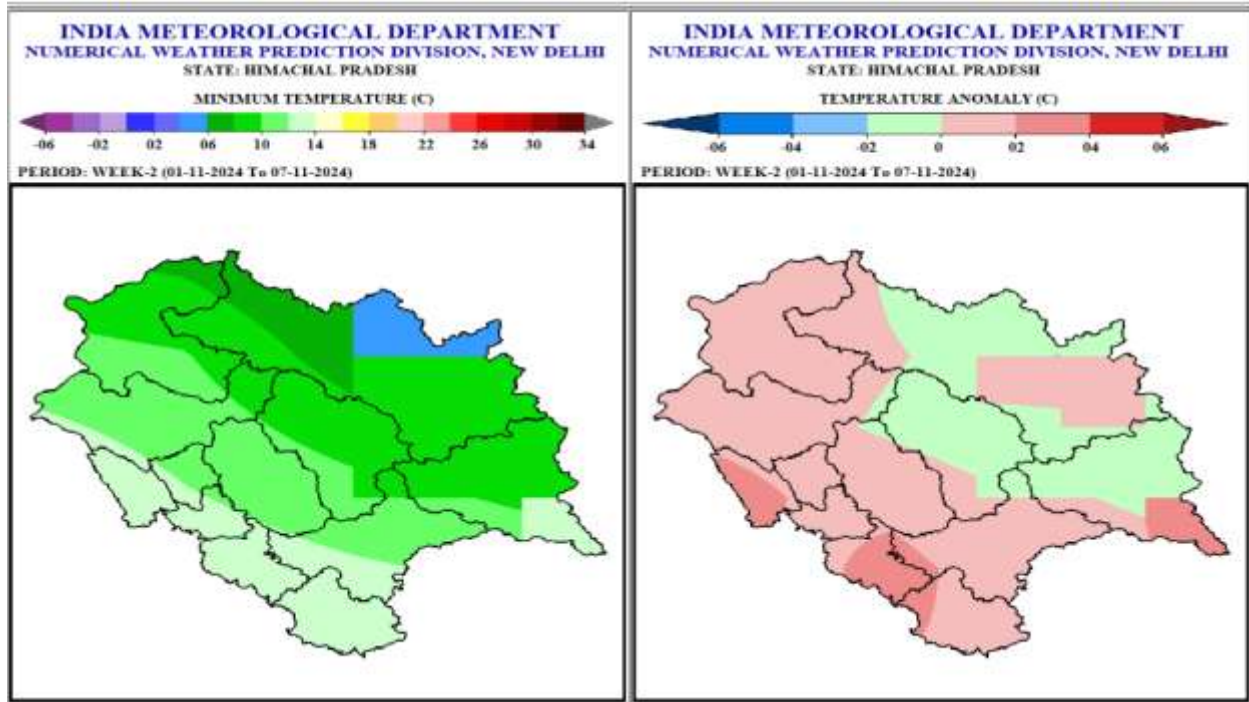
- Mainly dry weather likely over most parts of the state in the week 1.
- Rainfall likely to be normal over most parts of the state except some parts of Lahaul-spiti, Kinnaur and Chamba District where rainfall likely to be below normal in the week 2.

### Maximum Temperatures



- Maximum Temperatures are likely to be in the range of 26-30°C over many parts of lower hills/plains, in the range of 24-28°C over many parts of mid hills and in the range of 22-26°C over many parts of the high hills except some parts of Lahaul-Spiti where they are very likely to be in the range of 22-24°C in the week 2.
- Maximum Temperatures are likely to be near normal over many parts of high hills and mid hills and they are likely to be above normal in the range of 2-4°C over most parts of lower hills in the week 2.

### Minimum Temperatures



- Minimum Temperatures are very likely to be in the range of 10-14°C over most parts of lower hills/plains, in the range of 8-12°C over most parts of mid hills and in the range of 06-10°C over many parts of the high hills except some parts of Lahaul-Spiti where they are very likely to be in the range of 4-6°C in the week 2 .
- Minimum Temperatures likely to be near normal over most parts of the state except some parts of Una, Solan and Kinnaur districts where above normal temperatures are likely to be 2-4°C in the week 2.

### Outlook for next 2 weeks

Week	Max. Temp	Min. Temp.	Rainfall Anomaly
<b>Week 3</b> <b>8<sup>th</sup> November to 14<sup>th</sup> November</b>	Mainly Normal	Mainly Normal	Normal to Below Normal
<b>Week 4</b> <b>15<sup>th</sup> November to 21<sup>st</sup> November</b>	Mainly Normal	Mainly Normal	Normal

**Regards**  
**Met Centre Shimla**

**For latest Weather Bulletin and warnings kindly visit following links**

Website: <https://mausam.imd.gov.in/shimla/>

Facebook: <https://www.facebook.com/profile.php?id=100018411811087>

Twitter: <https://twitter.com/himachalmausam>

IG: [www.instagram.com/metcentresml/](https://www.instagram.com/metcentresml/)