

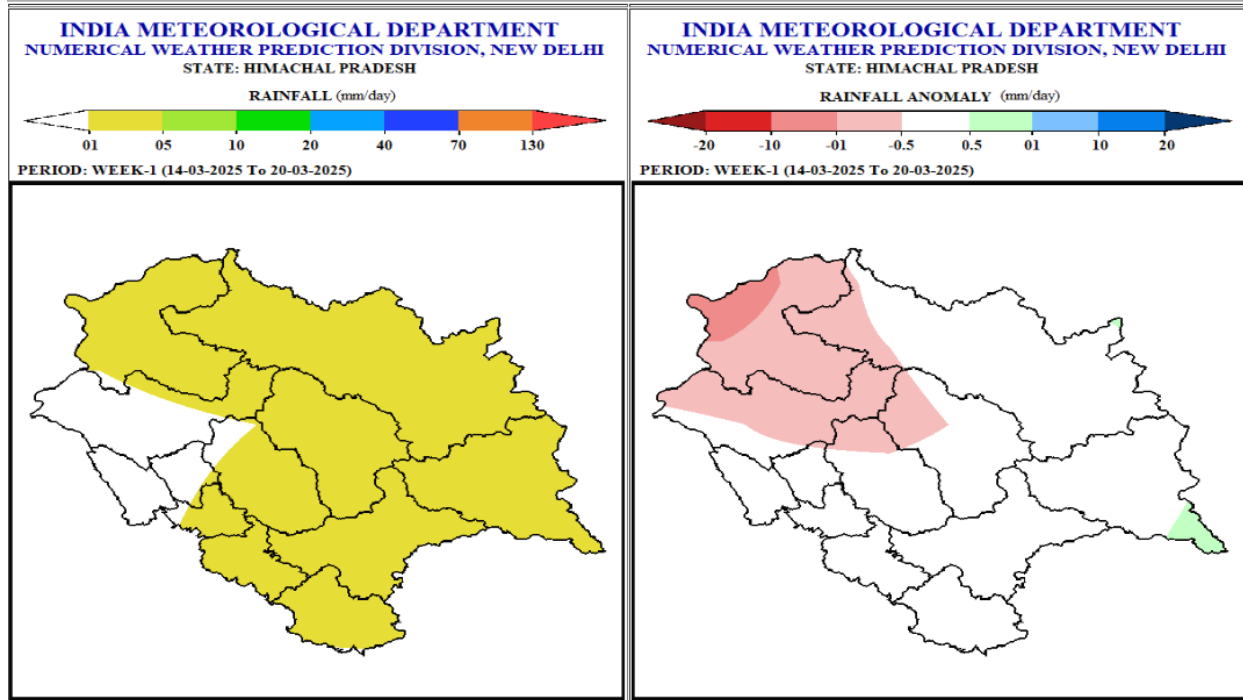
## Extended Range Weather Forecast

Date:- 13.03.2025

Weather Forecast and Warning for two weeks w.e.f. 14<sup>th</sup> March, 2025

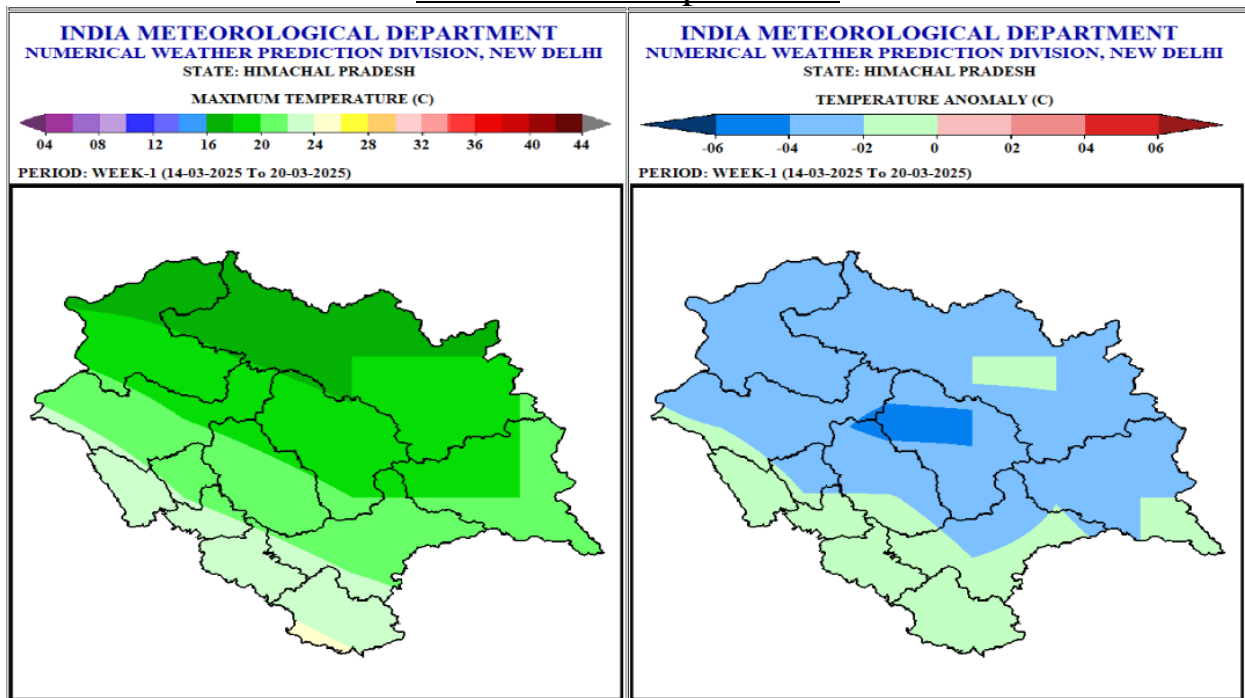
Week 1 (14<sup>th</sup> March 2025 – 20<sup>th</sup> March 2025)

### Rainfall



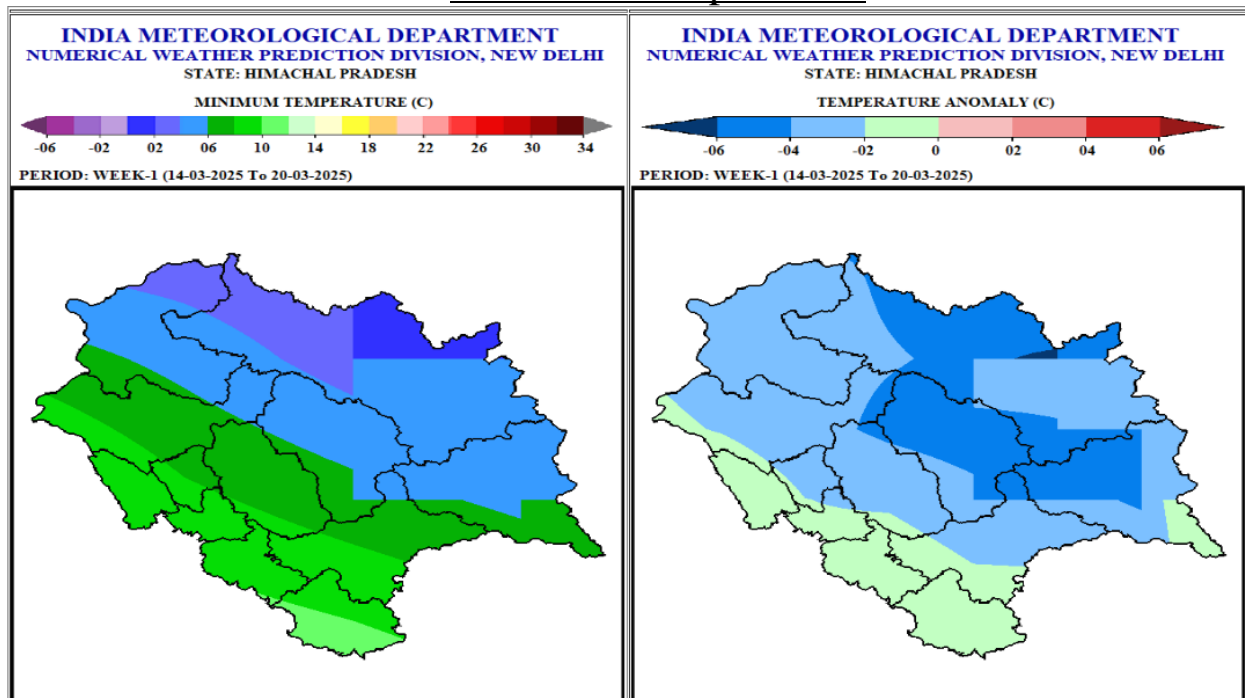
- Light to moderate precipitation very likely at many places over the state with isolated spells of heavy precipitation over high hills & adjoining mid hills during first half of the week and dry weather likely to prevail during next half of week 1.
- Rainfall anomaly very likely to be normal over the state except isolated parts of Chamba district in the week 1.

## Maximum Temperatures



- Maximum Temperatures are very likely to be in the range of 05-14°C over many parts of the high hills; in the range of 18-22°C over most parts of mid hills and in the range of 22-24°C over most parts of the lower hills/plains in the week 1.
- Maximum Temperatures very likely to be normal to below normal over most parts of the state in the week 1.

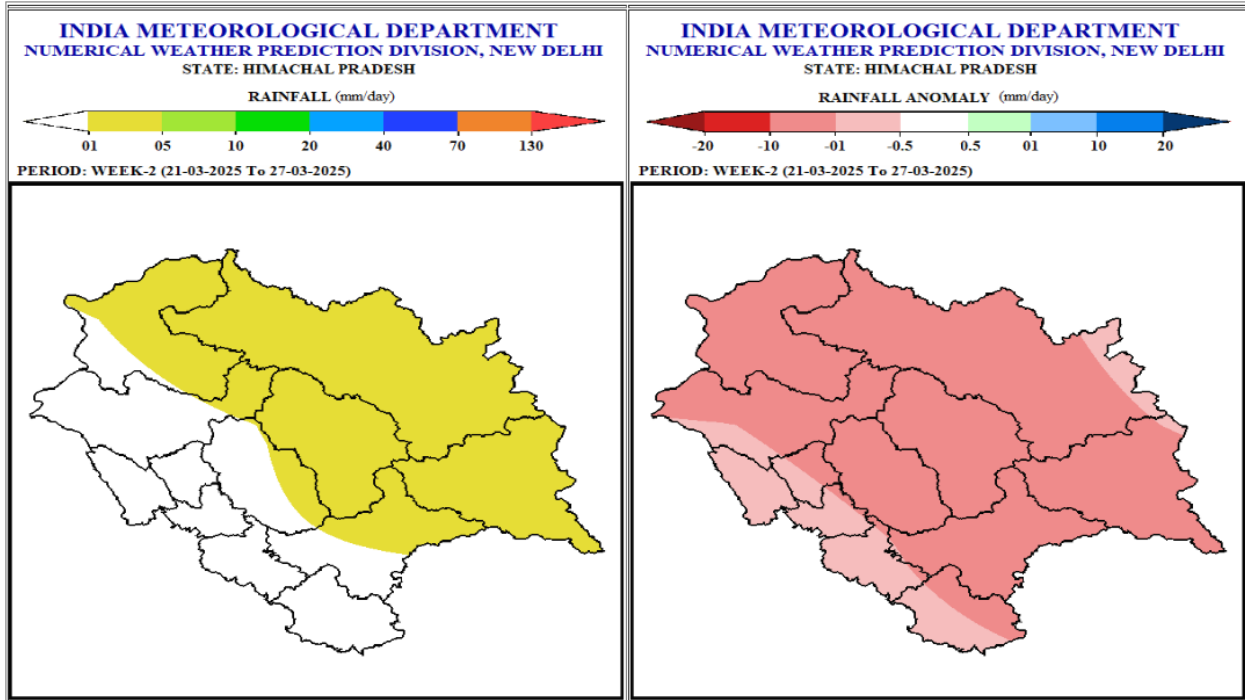
## Minimum Temperatures



- Minimum Temperatures are very likely to be in the range of 8-12°C over most parts of lower hills/plains and in the range of 6-8°C over many parts of mid hills and in the range of -2 to 6°C over most parts of high hills in the week 1.
- Minimum Temperatures are very likely to be normal to below normal in the week 1.

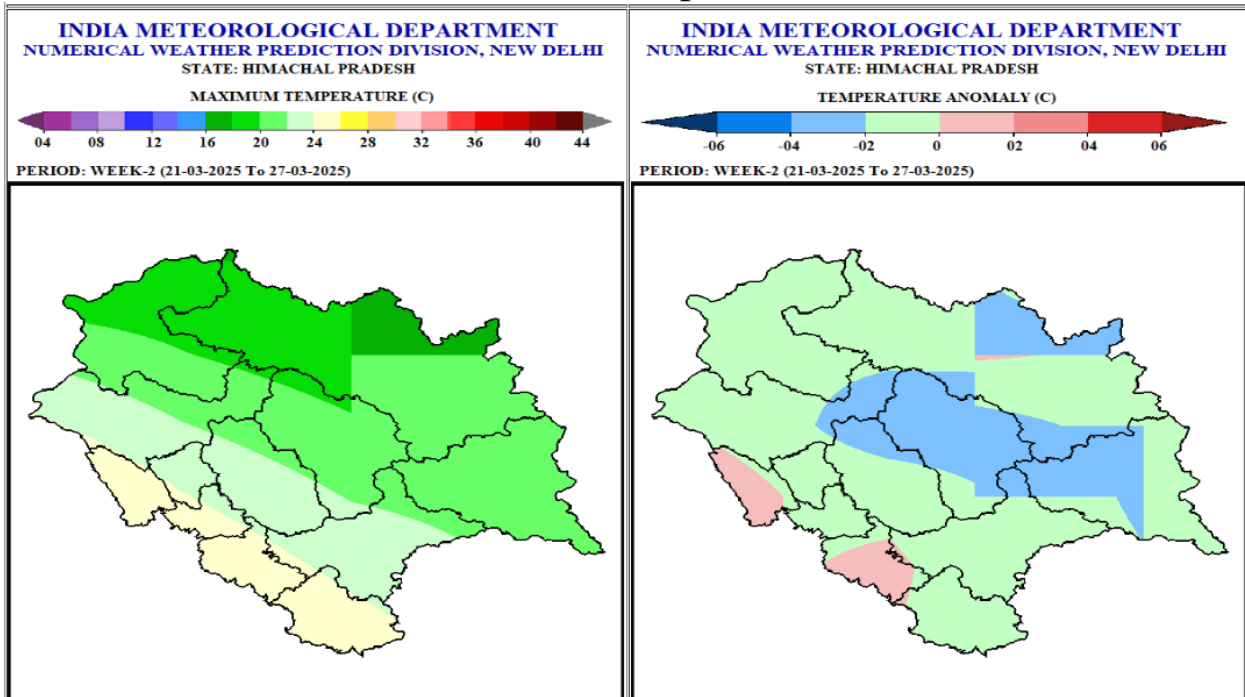
## Week 2 (21<sup>st</sup> March 2025 – 27<sup>th</sup> March 2025)

### Rainfall



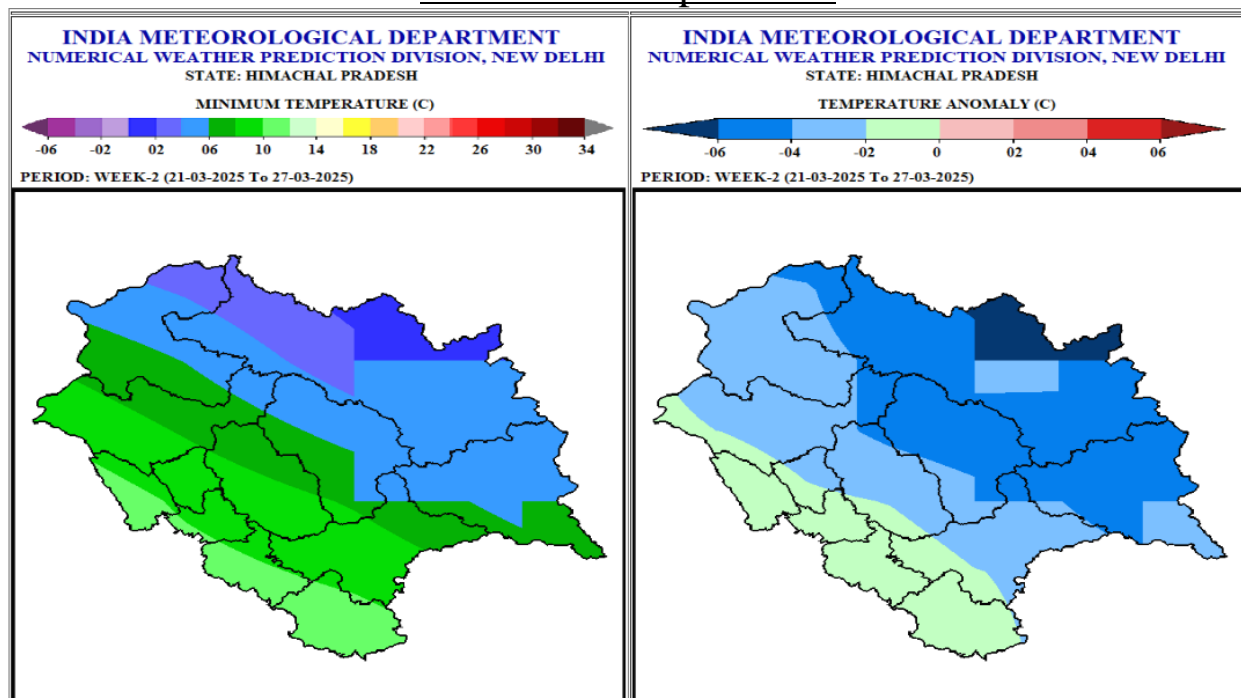
- Light precipitation likely at isolated places during first half of the week 2 and light to moderate precipitation likely over most parts of the state during second half of the week 2.
- Rainfall anomaly likely to be normal to below normal in the week 2.

### Maximum Temperatures



- Maximum Temperatures are likely to be in the range of 10-18°C over most parts of the high hills except some parts of Lahaul-Spiti where it is likely to be in the range of 06-10°C, in the range of 20-24°C over most parts of mid hills and in the range of 24-28°C in the lower hills in the week 2.
- Maximum Temperatures are likely to be normal to below normal over most parts of the state in the week 2.

## Minimum Temperatures



- Minimum Temperatures are likely to be in the range of 8-12°C over most parts of lower hills/plains; in the range of 4-8°C over most parts of mid hills & in the range of -2 to 5°C over many parts of the high hills except some parts of Lahaul- Spiti where it is likely to be in the range of -4 to 1°C in the week 2.
- Minimum Temperatures are likely to be normal in low hills/plain areas and below normal in high hills & mid hills of the state in the week 2.

### Outlook for next 2 weeks

Week	Max. Temp	Min. Temp.	Rainfall Anomaly
<b>Week 3</b> 28 <sup>th</sup> March to 03 <sup>rd</sup> April	<b>Plain areas:</b> Normal to Above Normal <b>Mid hills/ low hills:</b> Normal to Below normal	<b>High hills:</b> Below Normal <b>Low Hills/Plain areas &amp; Mid hills:</b> Normal to Above normal	Normal to above Normal
<b>Week 4</b> 04 <sup>th</sup> April to 10 <sup>th</sup> April	<b>Plain areas:</b> Normal to Above Normal <b>Mid hills/ low hills:</b> Normal to Below normal	<b>High hills:</b> Below Normal <b>Low Hills/Plain areas &amp; Mid hills:</b> Below Normal to Normal	Normal

Regards  
Met Centre Shimla

**For latest Weather Bulletin and warnings kindly visit following links**

Website: <https://mausam.imd.gov.in/shimla/>

Facebook: <https://www.facebook.com/profile.php?id=100018411811087>

Twitter:<https://twitter.com/himachalmausam>  
IG:[www.instagram.com/metcentresml/](http://www.instagram.com/metcentresml/)