



**Regional Meteorological Centre Mumbai**  
**India Meteorological Department**  
**Ministry of Earth Sciences**  
**Government of India**



**Date: 28th Sept 2025**

**Press Release No. 5**

**Subject: Updates on the heavy rainfall activity over Maharashtra**

**Realised weather:**

Heavy to very heavy rainfall occurred at a few places over the districts of Konkan, Madhya Maharashtra and Marathwada yesterday. Thunderstorms accompanied with lightning and gusty winds were also observed over the region. Significant rainfall realised over the region is given below in Annexure 1.

**Weather Systems:**

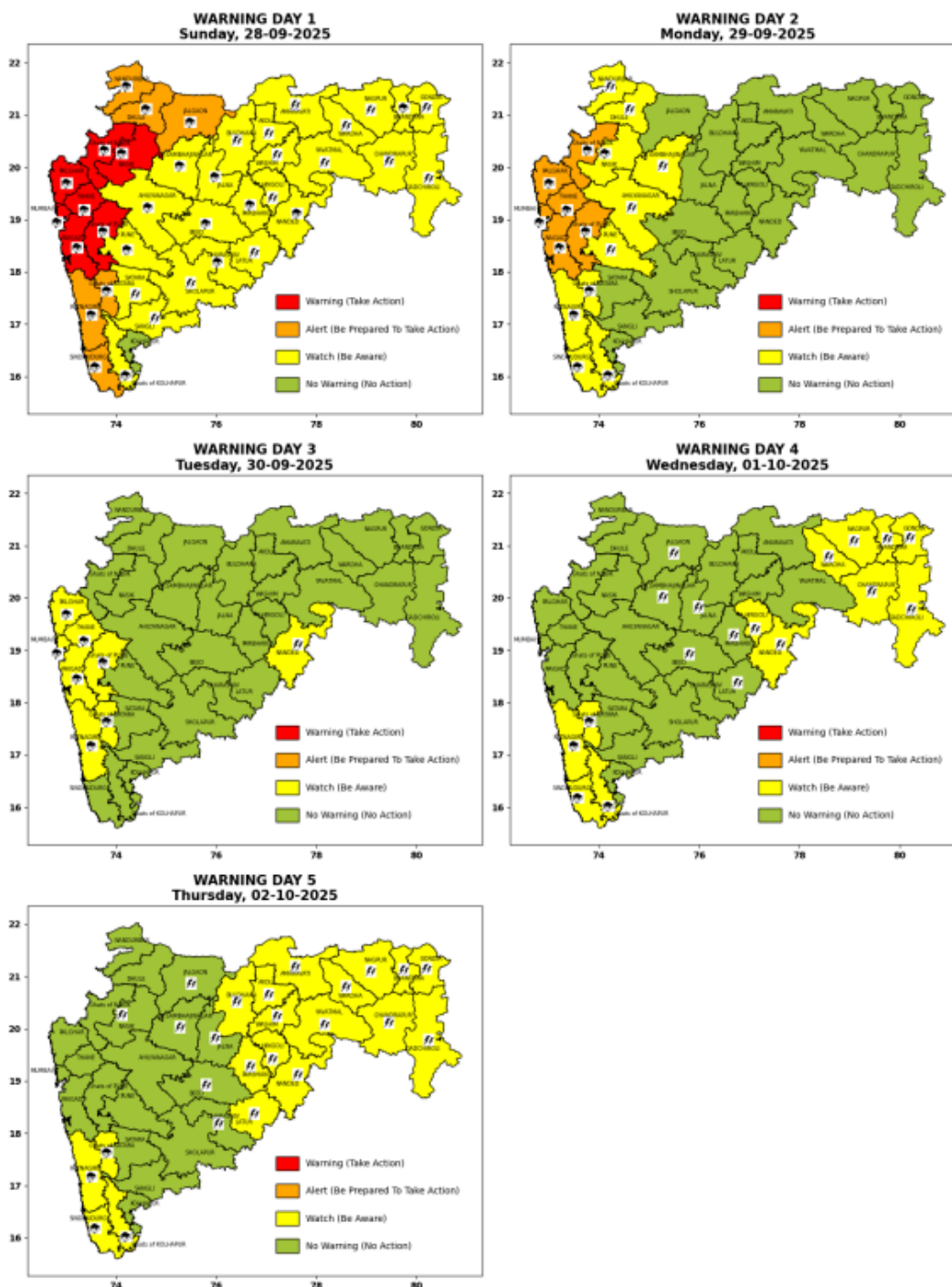
- Yesterday's depression over west Vidarbha and neighbourhood has moved nearly westwards and weakened into a well-marked low-pressure area over West Vidarbha and adjoining North Madhya Maharashtra at 0830 hours IST of today, the 28th September 2025. It is likely to weaken further into a low-pressure area during the next 24 hours. It is likely to continue to move nearly westwards across North Madhya Maharashtra, south Gujarat and Saurashtra during 28th to 30th September and emerge as a low-pressure area over Northeast Arabian Sea off Gujarat coast by 1st October.
- A trough runs from the above well marked low pressure area over west Vidarbha and adjoining north Madhya Maharashtra to west central Bay of Bengal across south Chhattisgarh, north Coastal Andhra Pradesh and extends upto 3.1km above mean sea level.

Under the influence of the above mentioned weather systems, the rainfall activity over Maharashtra is very likely to enhance during the period **28-30 September 2025**. The following weather is very likely:

- **Widespread rainfall activity with Heavy to Very Heavy rainfall at a few places with isolated Extremely Heavy rainfall very likely over North Konkan and adjoining ghat areas of Madhya Maharashtra during the above period.**
- **Fairly widespread to widespread rainfall activity with Heavy to very heavy rainfall at isolated places is very likely over Marathwada and parts of Madhya Maharashtra.**
- **Thunderstorms accompanied with lightning and gusty winds reaching 40-50 kmph are also very likely at isolated places over Konkan, Madhya Maharashtra and Marathwada during the above period.**

## Colour-coded District-wise Forecast and Warnings:

### WARNINGS



Warning Colour Codes	हिन्दी	मराठी
WARNING (TAKE ACTION)	चेतावनी	चेतावणी
ALERT (BE PREPARED TO TAKE ACTION)	सतर्क रहें	सतर्क असावे
WATCH (BE AWARE)	निगरानी रखें	लक्ष असावे
NO WARNING (NO ACTION)	कोई चेतावनी नहीं	धोखाची सूचना नाही

Forecast and Warning for any day is valid from 0830 hours IST of day till 0830 hours IST of next day.

For detailed district wise forecast and warnings, kindly refer:

<https://mausam.imd.gov.in/mumbai/mcdata/district.pdf>

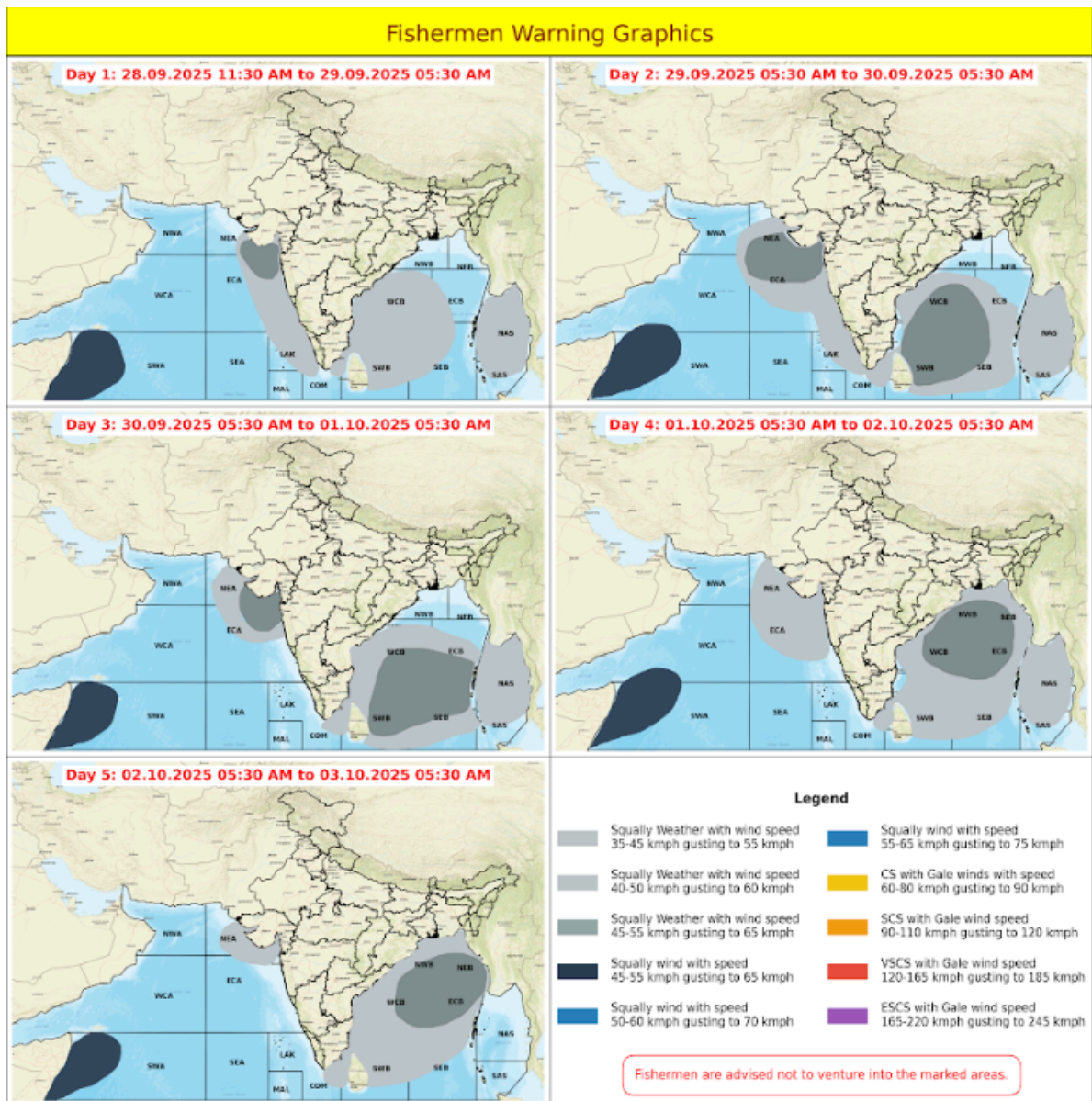
## Fishermen Warning for next 5 days:

### Warning for North Maharashtra coast: (up to 75km from the coast):

- Squally weather with wind speed reaching 45 - 55 kmph gusting to 65 kmph likely to prevail along and off North Maharashtra coast from dated 28th September to 30th September.
- Squally weather with wind speed reaching 40 - 50 kmph gusting to 60 kmph likely to prevail along and off North Maharashtra on dated 01st October.
- **Fishermen are advised not to venture into the above mentioned area during this period.**

### Warning for South Maharashtra–Goa coast: (up to 75 km from the coast) :

- Squally weather with wind speed reaching 40 - 50 kmph gusting to 60 kmph likely to prevail along and off South Maharashtra-Goa from dated 27th September to 01st October 2025.
- **Fishermen are advised not to venture into the above -mentioned area during this period.**





**Fishermen are advised not to venture into the above-mentioned area during this period.**

For detailed fishermen warning: <https://mausam.imd.gov.in/mumbai/mcdata/fisherman.pdf>

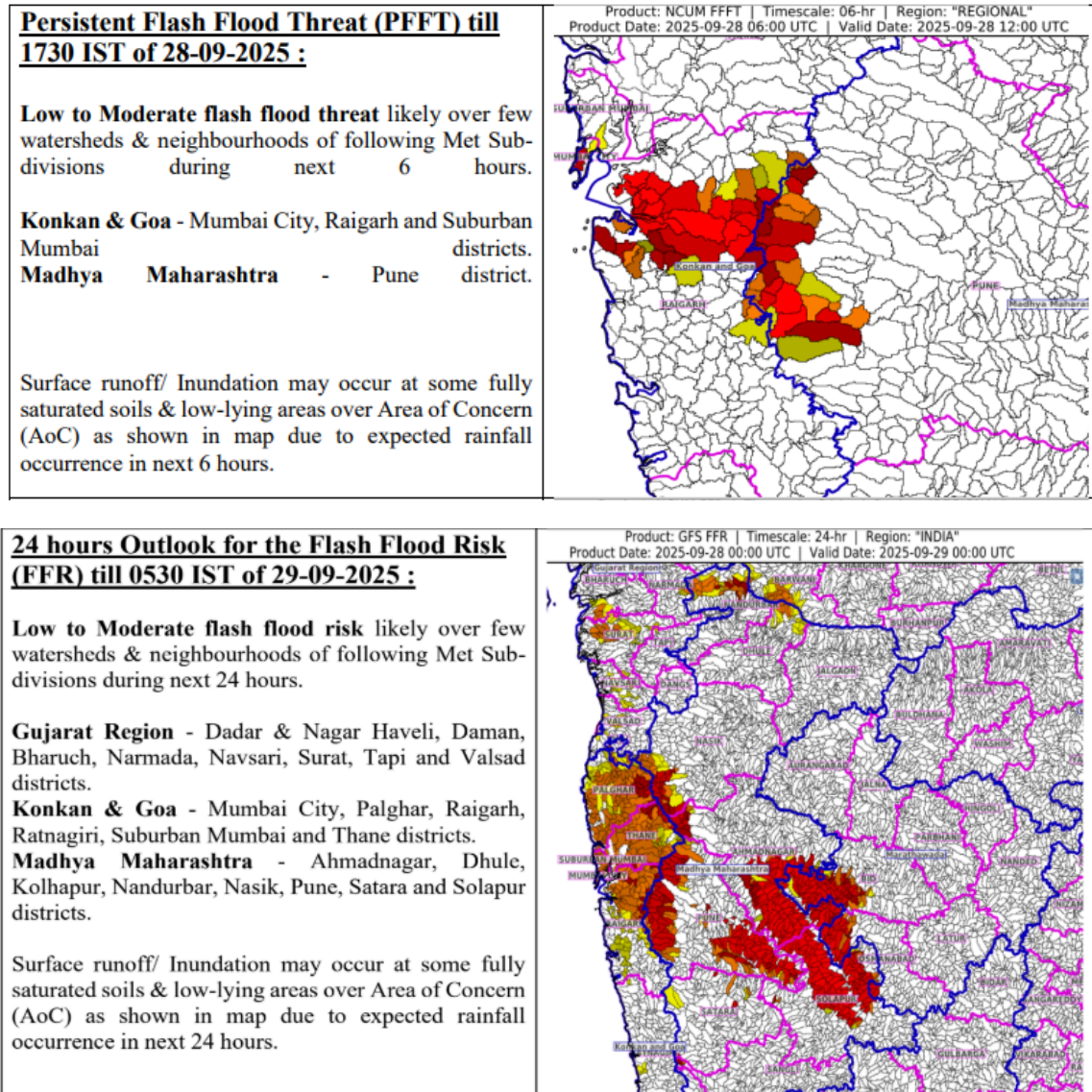
#### **Port Warning for South Maharashtra coast :-**

Due to Squally weather with wind speed reaching 45 - 55 kmph gusting to 65 kmph likely to prevail along and off North Maharashtra coast. Keep Hoisted **Local cautionary signal no. III Repeat (LC-III)** at all ports from Dahanu to Shrivardhan of North Maharashtra coast.

#### **Port Warning for South Maharashtra coast :-**

Due to Squally weather with wind speed reaching 40 - 50 kmph gusting to 60 kmph likely to prevail along and off South Maharashtra -Goa , Keep hoisted **Local cautionary signal no. III Repeat (LC-III)** at all ports from Bankot to Mormugao of South Maharashtra-Goa coasts.

#### **Flash Flood Guidance:**



### **Impact Expected:**

- Localized inundation/flooding of low-lying areas and urban areas.
- Possible uprooting of weak trees and collapse of old and unmaintained structures.
- Possibility of flash floods.
- Disruption to road, rail, air and ferry transport.
- Local disruption of municipal services (Water, electricity etc.)
- Flow of water over low-lying roads and bridges.
- Damage to horticulture and standing crops due to water inundation.
- Squally weather expected over coastal districts of Konkan.
- Rough Sea conditions along the coast.
- It may lead to riverine flooding in some river catchments (for riverine flooding please visit web page of Central Water Commission)
- Landslide/Mudslides and rock falls in vulnerable areas
- Strong wind may damage plantations, horticulture and standing crops.
- Minor damage to kutcha houses/walls and huts.
- Possibility of cloud to ground lightning during thunderstorm events.

### **Action Suggested:**

- Check for traffic congestion on your route before leaving for your destination.
- Follow any traffic advisories that are issued in this regard.
- Avoid staying in vulnerable structures.
- Avoid working in open areas and fields while thunderstorms are taking place.
- Avoid taking shelter under tall trees and structures when a thunderstorm is occurring.
- Unplug electrical/ electronic appliances.
- Immediately get out of water bodies.
- Keep away from all the objects that conduct electricity.

### **Agromet Advisory:**

- As there is a possibility of thunderstorm activity accompanied with gusty winds, lightning and light to moderate rainfall harvesting of matured crops should be done.
- Provide support to young fruits plants and vegetables to prevent from lodging.
- If threshing is not possible the harvested produce should be covered properly.
- For protection from rains the stored grains should be shifted to safe storage.
- Avoid irrigation and any kind of chemical spray.
- Make arrangements for drain out of excess rain water from the field.
- Cattle should be kept at safe places in cattle sheds. Keep farm animals indoor during thunderstorm & lightning.

The warnings are issued based on the latest observations and numerical weather prediction model guidance available. Please be regularly updated with the latest warnings and forecasts issued by IMD in the coming days. Further details are available on websites of IMD HQ, IMD Mumbai and IMD Nagpur.

Kindly visit the IMD websites: <https://mausam.imd.gov.in>, <https://mausam.imd.gov.in/mumbai> and <http://www.imdnagpur.gov.in> for current weather updates.

**Regional Weather Forecasting Centre RMC Mumbai**

**Phone: +91 022 22150431/22174719/22174735**

## **Significant Rainfall (in cm) over different subdivisions ( $\geq 7$ cm): (Annexure 1)**

### **Konkan-Goa:**

Palghar\_agri (dist Palghar) 18, Dahanu - Imd Obsy (dist Palghar) 13, Colaba - Imd Obsy (dist Mumbai City) 12, Murbad (dist Thane) 12, Thane (dist Thane) 12, Jawhar (dist Palghar) 11, Mandangad (dist Ratnagiri) 11, Vikramgad (dist Palghar) 11, Mangaon (dist Raigad) 10, Khed (dist Ratnagiri) 9, Pen (dist Raigad) 9, Sudhagad Pali (dist Raigad) 9, Wada (dist Palghar) 9, Shriwardhan (dist Raigad) 9, Matheran (dist Raigad) 8, Vasai (dist Palghar) 8, Tala (dist Raigad) 8, Santacruz - Imd Obsy (dist Mumbai Suburban) 8, Mokheda - Fmo (dist Palghar) 8, Dapoli\_agri (dist Ratnagiri) 8, Mhasla (dist Raigad) 8, Uran (dist Raigad) 8, Poladpur (dist Raigad) 8, Tbia Imd Part Time (dist Thane) 8, Karjat\_agri (dist Raigad) 7, Talasari (dist Palghar) 7, Mahad (dist Raigad) 7, Wakwali\_agri (dist Ratnagiri) 7, Harnai Imd Obsy (dist Ratnagiri) 7, Shahapur (dist Thane) 7, Savarde-arg (dist Ratnagiri) 7.

### **Madhya Maharashtra:**

Shevgaon (dist Ahilyanagar) 18, Surgana (dist Nashik) 17, Harsul - Fmo (dist Nashik) 16, Nandgaon (dist Nashik) 15, Rahuri (dist Ahilyanagar) 13, Kopargaon (dist Ahilyanagar) 13, Shevgaon (dist Ahilyanagar) 12, Yeola (dist Nashik) 12, Nevasa (dist Ahilyanagar) 11, Shrirampur (dist Ahilyanagar) 11, Peth (dist Nashik) 10, Jamkhed (dist Ahilyanagar) 10, Ozharkheda - Fmo (dist Nashik) 9, Chalisgaon (dist Jalgaon) 9, Lonavala\_agri (dist Pune) 9, Ahilyanagar - Imd Pt (dist Ahilyanagar) 9, Pathardi (dist Ahilyanagar) 8, Bhadgaon (dist Jalgaon) 8, Trimbakshwar (dist Nashik) 8, Erandol (dist Jalgaon) 8, Pimpalgaonbaswant\_agri (dist Nashik) 8, Pachora (dist Jalgaon) 8, Dindori (dist Nashik) 8, Niphad (dist Nashik) 8, Ambegaon Ghodegaon (dist Pune) 7, Malegaon Camp - Imd Pt (dist Nashik) 7, Dharangaon (dist Jalgaon) 7, Shahuwadi (dist Kolhapur) 7, Savlivihir\_agri (dist Ahilyanagar) 7, Chas\_agri (dist Ahilyanagar) 7, Nashik - Imd Obsy (dist Nashik) 7, Sangola (dist Sholapur) 7, Sinnar (dist Nashik) 7, Akole (dist Ahilyanagar) 7, Jamner (dist Jalgaon) 7, Nandurbar (dist Nandurbar) 7, Mulher - Fmo (dist Nashik) 7, Igatpuri (dist Nashik) 7, Devla (dist Nashik) 7, Talegaon Aws (dist Pune) 7.

### **Marathwada:**

Khultabad (dist Chh. Sambhajinagar) 18, Loha (dist Nanded) 13, Kannad (dist Chh. Sambhajinagar) 13, Vaijapur (dist Chh. Sambhajinagar) 12, Khultabad (dist Chh. Sambhajinagar) 11, Tondapur- Arg (dist Hingoli) 10, Phulambri (dist Chh. Sambhajinagar) 10, Palam (dist Parbhani) 10, Patoda (dist Beed) 9, Purna (dist Parbhani) 9, Gangapur (dist Chh. Sambhajinagar) 9, Dharur (dist Beed) 9, Shirur Kasar (dist Beed) 9, Washi (dist Dharashiv) 9, Kallamnuri (dist Hingoli) 9, Vasmat (dist Hingoli) 9, Mahur (dist Nanded) 9, Bhum (dist Dharashiv) 8, Ambejogai / Mominabad (dist Beed) 8, Beed (dist Beed) 8, Manjlegaon (dist Beed) 8, Aundha Nagnath (dist Hingoli) 8, Bhokardan (dist Jalna) 8, Georai (dist Beed) 7, Wadawani (dist Beed) 7, Ambad (dist Jalna) 7, Sengaon (dist Hingoli) 7, Soegaon (dist Chh. Sambhajinagar) 7.