

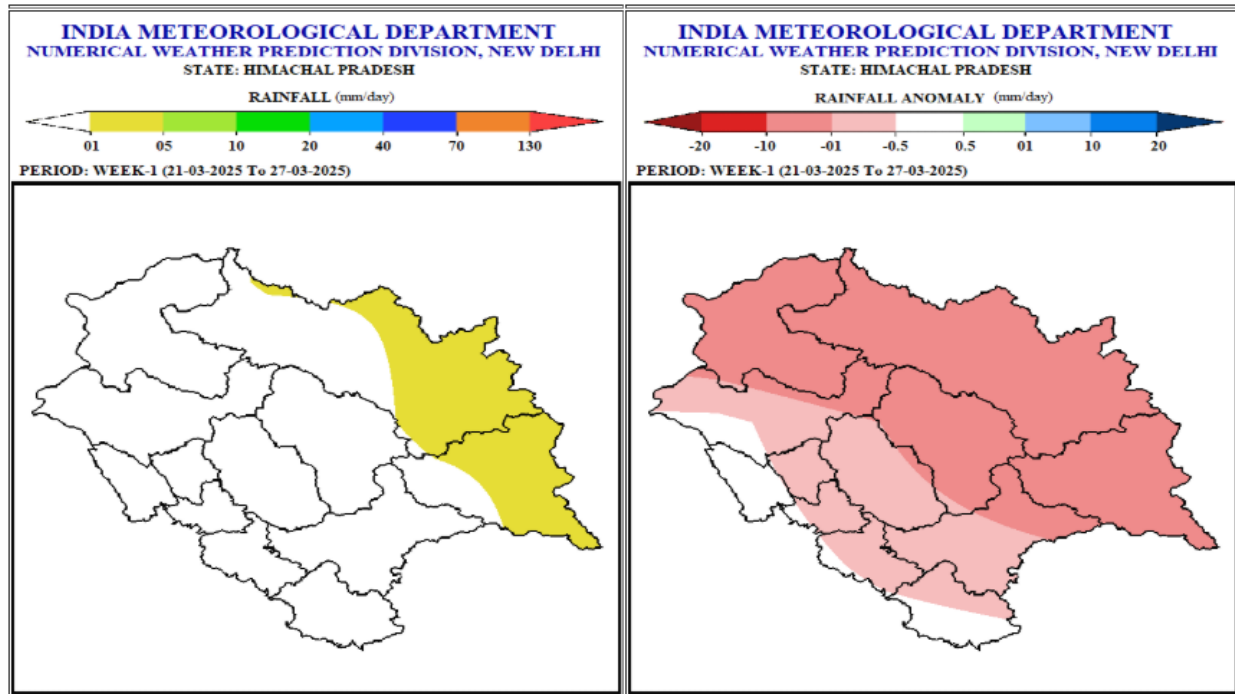
Extended Range Weather Forecast

Date:- 20.03.2025

Weather Forecast and Warning for two weeks w.e.f. 21st March, 2025

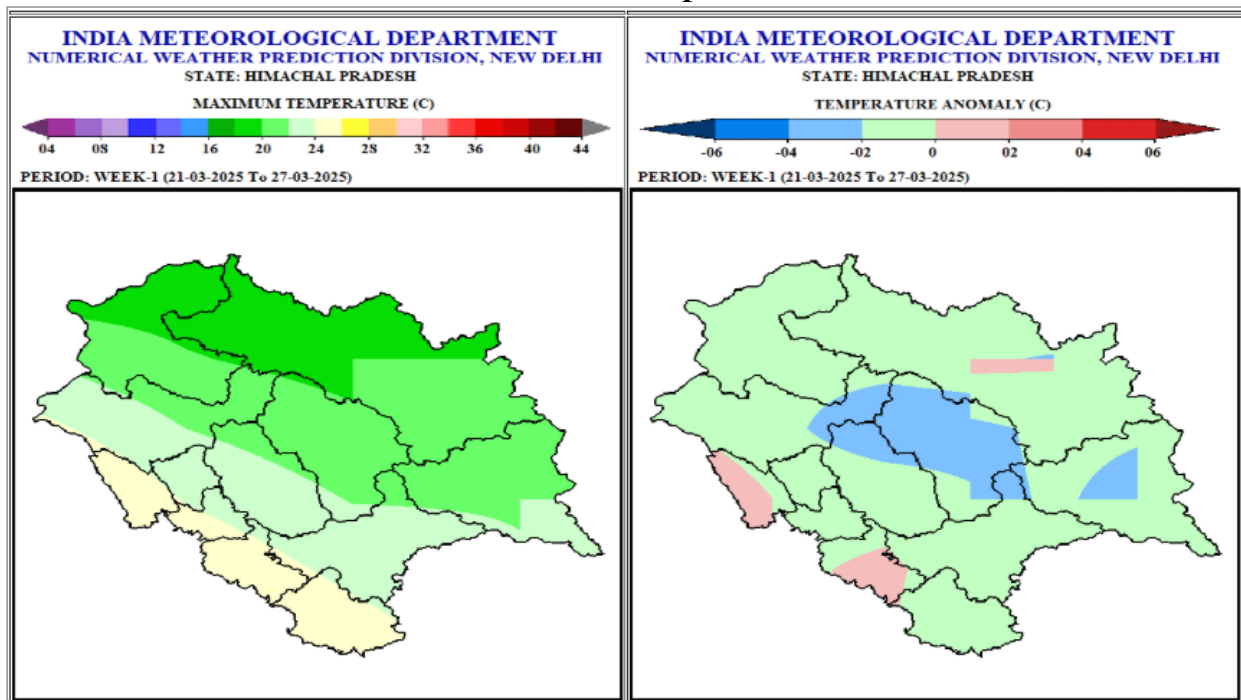
Week 1 (21st March 2025 – 27th March 2025)

Rainfall



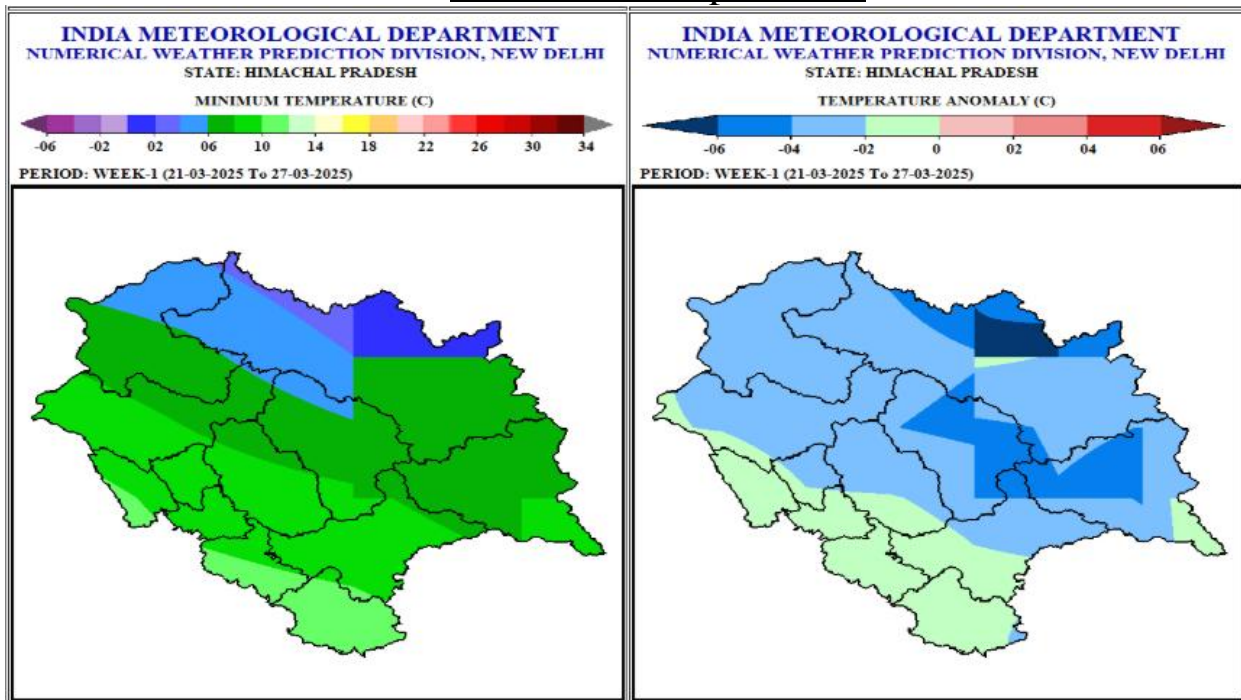
- Light rain very likely at isolated places over the higher reaches of the state in the week 1.
- Rainfall anomaly very likely to be below normal over the state except in the low hills/plains where rainfall is likely to be normal in the week 1.

Maximum Temperatures



- Maximum Temperatures are very likely to be in the range of 8-20°C over many parts of the high hills; in the range of 20-24°C over most parts of mid hills and in the range of 26-30°C over most parts of the lower hills/plains in the week 1.
- Maximum Temperatures very likely to be normal to below normal over most parts of the state in the week 1.

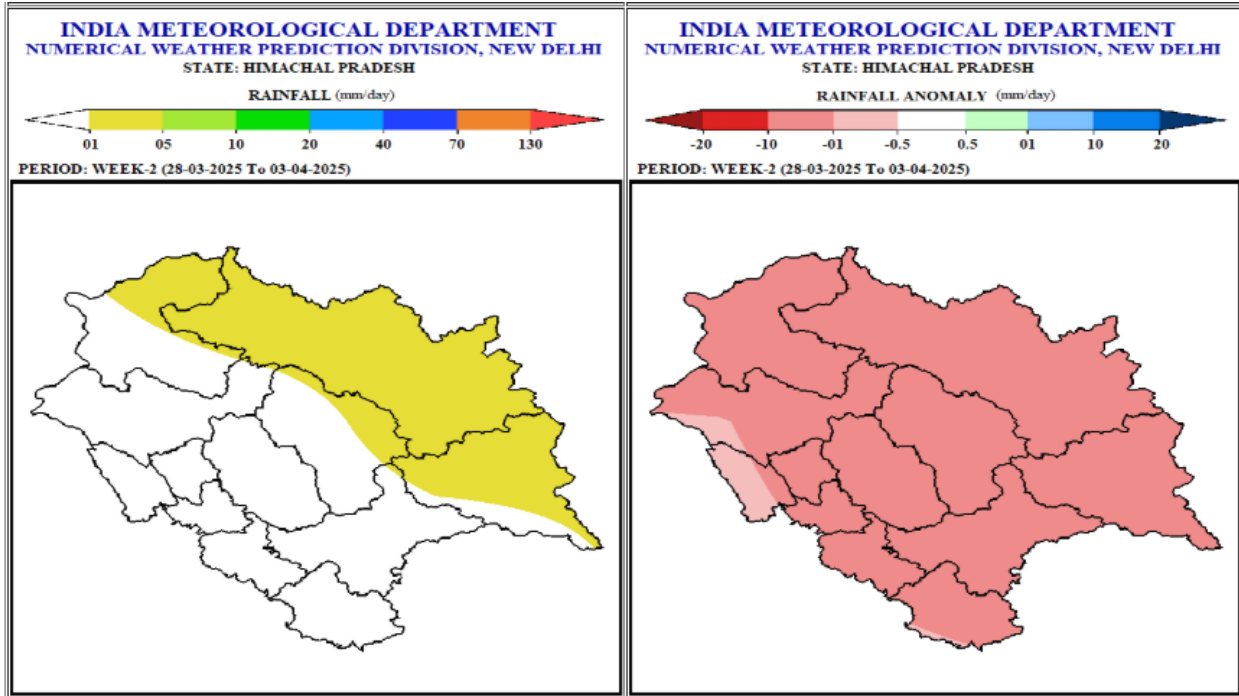
Minimum Temperatures



- Minimum Temperatures are very likely to be in the range of 8-14°C over most parts of lower hills/plains and in the range of 6-10°C over many parts of mid hills and in the range of - to 6°C over most parts of high hills in the week 1.
- Minimum Temperatures are very likely to be normal to below normal in the week 1.

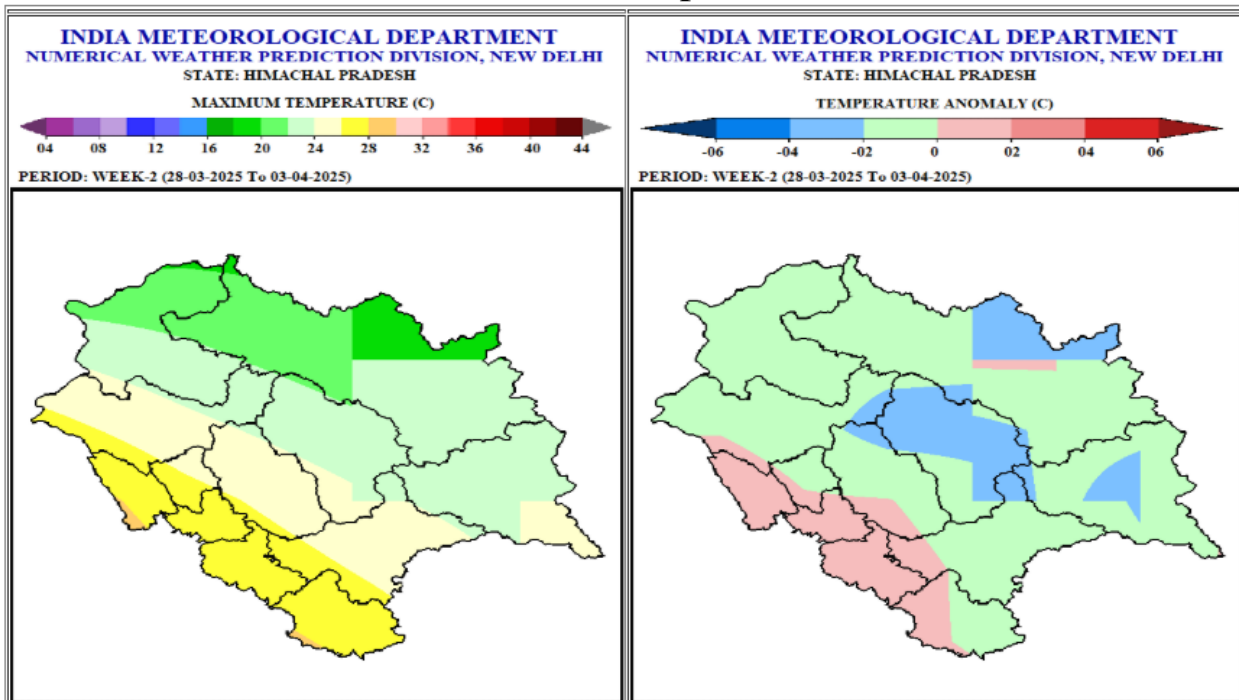
Week 2 (28th March 2025 – 3rd April 2025)

Rainfall



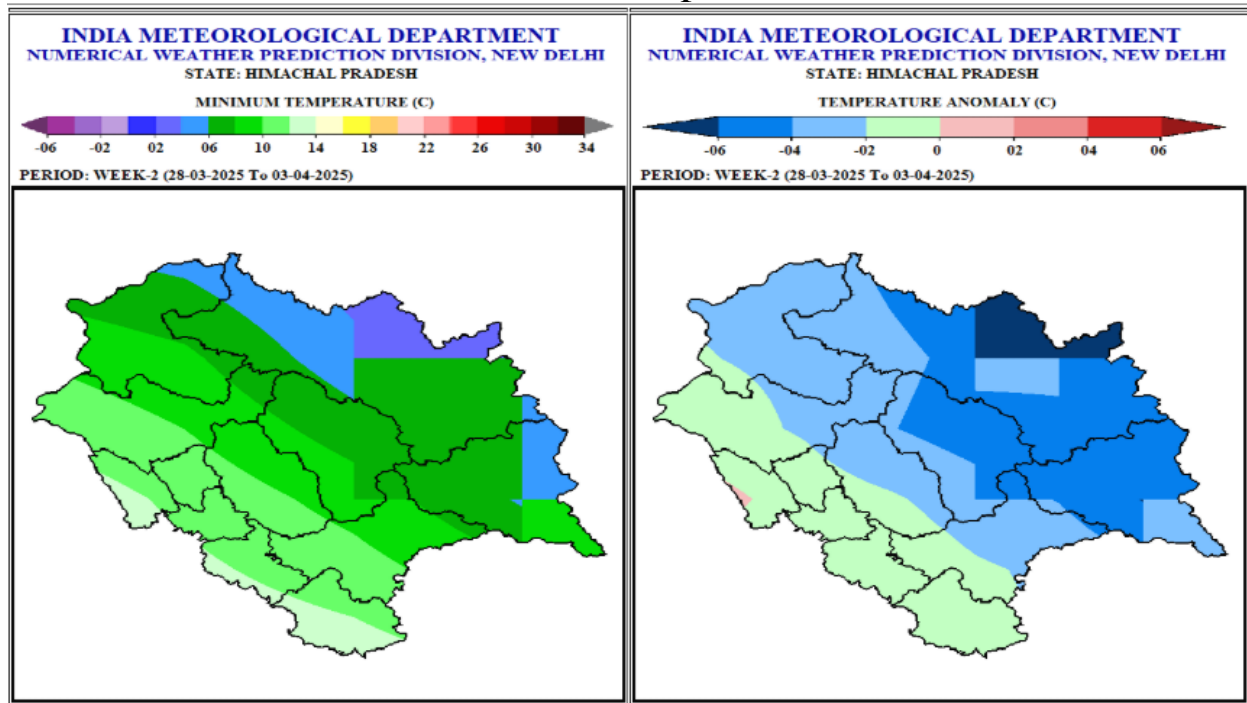
- Light rain likely at isolated places over the higher reaches of the state in the week 2.
- Rainfall anomaly likely to be below normal in the week 2.

Maximum Temperatures



- Maximum Temperatures are likely to be in the range of 8-18°C over most parts of the high hills, in the range of 22-26°C over most parts of mid hills and in the range of 24-32°C in the lower hills in the week 2.
- Maximum Temperatures are likely to be normal to near normal over most parts of the state in the week 2.

Minimum Temperatures



- Minimum Temperatures are likely to be in the range of 10-14°C over most parts of lower hills/plains; in the range of 6-10°C over most parts of mid hills & in the range of 2-8°C over many parts of the high hills in the week 2.
- Minimum Temperatures are likely to be near normal in low hills/plain areas and below normal in high hills & mid hills of the state in the week 2.

Outlook for next 2 weeks

Week	Max. Temp	Min. Temp.	Rainfall Anomaly
Week 3 04 th April to 10 th April	Plain areas: Normal Mid hills/ low hills: Normal to Above normal	High hills: Below Normal Low Hills/Plain areas & Mid hills: Normal to Above normal	Normal to below Normal
Week 4 11 th April to 17 th April	Plain areas: Normal Mid hills/ low hills: Normal to Above normal	High hills: Normal Low Hills/Plain areas & Mid hills: Normal to Near Normal	Normal

Regards
Met Centre Shimla

For latest Weather Bulletin and warnings kindly visit following links

Website: <https://mausam.imd.gov.in/shimla/>

Facebook: <https://www.facebook.com/profile.php?id=100018411811087>

Twitter: <https://twitter.com/himachalmausam>

IG: www.instagram.com/metcentresml/