

Impact based forecast (IBF) for Agriculture for all districts, Mizoram (based on the forecast issued on 28-05-2024)

District Level Forecast and warning issued by RMC, Guwahati on 28-05-2024

28.05.2024	<ul style="list-style-type: none"> On May 28, 2024, Aizawl, Kolasib, Saitual and Champhai districts of Mizoram are likely to face squally wind with wind speed 40- 50 kmph gusting to 60 kmph and heavy to very rain at isolated places with isolated extremely heavy falls.
------------	---------------------------------------------------------------------------------------------------------------------------------------------------------------------------------------------------------------------------------------------------------------------------------------------

District	Crop	Stage	Likely Impact on crop/ animal/ Fishery	Advisory
Kolasib, Lunglei, Khawzawl and Hnahthial	<i>Pre-kharif</i> vegetables	Flowering to maturity stage.	<ul style="list-style-type: none"> Lodging due heavy to very heavy rainfall with gusty wind. Fruit dropping due to gusty wind and fruit rot. 	<ul style="list-style-type: none"> Farmers are advised to maintain the drainage channel to avoid water stagnation problem as heavy to very heavy rainfall is observed and forecasted. Mature vegetables should be harvest one to two days after rainfall. There is a possibility of plant/ branch lodging due to observed heavy rainfall and gusty wind. Farmers are advised to take appropriate measures reestablished the plants/ branches with support (bamboo and tree branches).
	Maize, cowpea, ricebean, pumpkin and cucumber	Vegetative stage	<ul style="list-style-type: none"> Lodging due heavy to very heavy rainfall with gusty wind. 	<ul style="list-style-type: none"> As heavy to very heavy rainfall and gusty wind is prevailing, farmers are advised to earthing up the plant by soil to reduce plant lodging. Farmers are advised to provide bamboo support to the plant for better vegetative growth and pod development as gusty wind is predicted. Farmers are advised to keep drainage channels clear to prevent issues with water stagnation, as there is a forecast for heavy to very heavy rainfall.
	Mango, plam, litchi, peach and banana	Fruit development to mature stage	<ul style="list-style-type: none"> Lodging of plant due heavy to very heavy rainfall with gusty wind. Lodging of fruits due to gusty wind. Fruits rot problem. 	<ul style="list-style-type: none"> Farmers are advised to cover the fruit bearing plants like mango, banana and litchi with proper netting as heavy to very heavy with moderate wind is forecasted. Farmers are advised to remove stagnant water and also earthing up the soil to provide support to the plant also provide support fruit crops seedling (Mango, plam, litchi, peach and banana) as moderate to light rainfall was observed and moderated to heavy rainfall is predicted
	Okra	Fruit development to mature stage	<ul style="list-style-type: none"> Lodging of plant due moderate to heavy rainfall with gusty wind. Lodging of fruits due to gusty wind. 	<ul style="list-style-type: none"> Since, there is probability of rainfall in the coming days, mechanical support should be provided in the okra (plants) as well as drainage channel should be maintained around the field. Mature fruits should be harvested one

			<ul style="list-style-type: none"> • Fruits rot problem. 	to two days after rainfall.
	Pig and cow	All stage	<ul style="list-style-type: none"> • Pneumonia and fever due moderate to light rainfall. 	<ul style="list-style-type: none"> • Farmers are advised to keep their livestock inside animal shade as heavy to very heavy rainfall along with thunderstorm may occur. Farmers are advised to repair the damage roof of animal shade as moderate to light rainfall may occur next few days. Possibility of animal fall down may occur due to rainfall, floor should be dry/clean, windows/ door must be close during rainy time.
	Fish	All stage	<ul style="list-style-type: none"> • Escaping fish from pond. • Aeration problems. 	<ul style="list-style-type: none"> • Dykes/ bunds around the fish ponds may be raised high and encircle with happa net to avoid escape of fishes from pond as heavy to very heavy rainfall is predicted. Avoid excessive manuring and feeding which can lead to oxygen depletion during cloudy weather, hence both should be avoided. • Water should not drain directly into the pond. It should be passed through a bed of sand or filter mesh before draining. • Farmer should construct an outlet with proper netting to drain out excess rain water thereby preventing fishes from escaping the pond and maintaining the water level.

Impact based forecast (IBF) for Agriculture for all districts, Mizoram (based on the forecast issued on 28-05-2024)

District Level Forecast and warning issued by RMC, Guwahati on 28-05-2024

28.05.2024	<ul style="list-style-type: none"> On May 28, 2024, Serchhip, Khawzawl, Lawngtlai, Lunglei, Siaha and Hnahthial districts of Mizoram are likely to face Squally wind with wind speed 40- 50 kmph gusting to 60 kmph and heavy to very rain at isolated places with isolated extremely heavy falls.
------------	-------------------------------------------------------------------------------------------------------------------------------------------------------------------------------------------------------------------------------------------------------------------------------------------------------------------

District	Crop	Stage	Likely Impact on crop/ animal/ Fishery	Advisory
Aizawl, Mamit, Champhai, Serchhip, Lawngtlai, Siaha and Saitual	<i>Pre-kharif</i> vegetables	Flowering to maturity stage.	<ul style="list-style-type: none"> Lodging due heavy to very heavy rainfall with gusty wind. Fruit dropping due to gusty wind and fruit rot. 	<ul style="list-style-type: none"> Farmers are advised to maintain the drainage channel to avoid water stagnation problem as heavy to very heavy rainfall is observed and forecasted. Mature vegetables should be harvest one to two days after rainfall. There is a possibility of plant/ branch lodging due to observed heavy rainfall and gusty wind. Farmers are advised to take appropriate measures reestablished the plants/ branches with support (bamboo and tree branches).
	Maize, cowpea, ricebean, pumpkin and cucumber	Vegetative stage	<ul style="list-style-type: none"> Lodging due heavy to very heavy rainfall with gusty wind. 	<ul style="list-style-type: none"> As heavy to very heavy rainfall and gusty wind is prevailing, farmers are advised to earthing up the plant by soil to reduce plant lodging. Farmers are advised to provide bamboo support to the plant for better vegetative growth and pod development as gusty wind is predicted. Farmers are advised to keep drainage channels clear to prevent issues with water stagnation, as there is a forecast for heavy to very heavy rainfall.
	Mango, plam, litchi, peach and banana	Fruit development to mature stage	<ul style="list-style-type: none"> Lodging of plant due heavy to very heavy rainfall with gusty wind. Lodging of fruits due to gusty wind. Fruits rot problem. 	<ul style="list-style-type: none"> Farmers are advised to cover the fruit bearing plants like mango, banana and litchi with proper netting as heavy to very heavy with moderate wind is forecasted. Farmers are advised to remove stagnant water and also earthing up the soil to provide support to the plant also provide support fruit crops seedling (Mango, plam, litchi, peach and banana) as moderate to light rainfall was observed and moderated to heavy rainfall is predicted
	Okra	Fruit development to mature stage	<ul style="list-style-type: none"> Lodging of plant due moderate to heavy rainfall with gusty wind. Lodging of fruits due 	<ul style="list-style-type: none"> Since, there is probability of rainfall in the coming days, mechanical support should be provided in the okra (plants) as well as drainage channel should be maintained around the field.

			<p>to gusty wind.</p> <ul style="list-style-type: none"> • Fruits rot problem. 	<ul style="list-style-type: none"> • Mature fruits should be harvested one to two days after rainfall.
	Pig and cow	All stage	<ul style="list-style-type: none"> • Pneumonia and fever due moderate to light rainfall. 	<ul style="list-style-type: none"> • Farmers are advised to keep their livestock inside animal shade as heavy to very heavy rainfall along with thunderstorm may occur. Farmers are advised to repair the damage roof of animal shade as moderate to light rainfall may occur next few days. Possibility of animal fall down may occur due to rainfall, floor should be dry/clean, windows/ door must be close during rainy time.
	Fish	All stage	<ul style="list-style-type: none"> • Escaping fish from pond. • Aeration problems. 	<ul style="list-style-type: none"> • Dykes/ bunds around the fish ponds may be raised high and encircle with happa net to avoid escape of fishes from pond as heavy to very heavy rainfall is predicted. Avoid excessive manuring and feeding which can lead to oxygen depletion during cloudy weather, hence both should be avoided. • Water should not drain directly into the pond. It should be passed through a bed of sand or filter mesh before draining. • Farmer should construct an outlet with proper netting to drain out excess rain water thereby preventing fishes from escaping the pond and maintaining the water level.

Districtwise Weather Warning

State:	MIZORAM		Date:	May 27, 2024		MID-DAY
District	Day1	Day2	Day3	Day4	Day5	
	27 May 2024	28 May 2024	29 May 2024	30 May 2024	31 May 2024	
MIZORAM						
MAMIT	Squally wind with wind speed 40- 50 kmph gusting to 60 kmph and heavy to very rain very likely at isolated places.	Thunderstorm with lightning and heavy rain very likely at isolated places.	Thunderstorm with lightning very likely at isolated places.	Thunderstorm with lightning very likely at isolated places.		No Warning
KOLASIB	Squally wind with wind speed 40- 50 kmph gusting to 60 kmph and heavy to very rain at isolated places with isolated extremely heavy falls very likely .	Thunderstorm with lightning and heavy rain very likely at isolated places.	Thunderstorm with lightning very likely at isolated places.	Thunderstorm with lightning very likely at isolated places.		Thunderstorm with lightning very likely at isolated places.
AIZAWL	Squally wind with wind speed 40- 50 kmph gusting to 60 kmph and heavy to very rain very likely at isolated places.	Thunderstorm with lightning and heavy rain very likely at isolated places.	Thunderstorm with lightning very likely at isolated places.	Thunderstorm with lightning very likely at isolated places.		Thunderstorm with lightning very likely at isolated places.
CHAMPAI	Squally wind with wind speed 40- 50 kmph gusting to 60 kmph and heavy to very rain very likely at isolated places.	Thunderstorm with lightning and heavy rain very likely at isolated places.	No Warning	No Warning		No Warning
SERCHHIP	Squally wind with wind speed 40- 50 kmph gusting to 60 kmph and heavy to very rain very likely at isolated places.	Thunderstorm with lightning and heavy rain very likely at isolated places.	No Warning	No Warning		No Warning
LUNGLEI	Squally wind with wind speed 40- 50 kmph gusting to 60 kmph and heavy to very rain at isolated places with isolated extremely heavy falls very likely .	Thunderstorm with lightning and extremely Heavy rainfall very likely at isolated places.	Thunderstorm with lightning very likely at isolated places.	No Warning		Thunderstorm with lightning very likely at isolated places.
LAWNGTLAI	Squally wind with wind speed 40- 50 kmph gusting to 60 kmph and heavy to very rain at isolated places with isolated extremely heavy falls very likely .	Thunderstorm with lightning and extremely Heavy rain is very likely at isolated places.	Thunderstorm with lightning very likely at isolated places.	No Warning		No Warning
SAIHA	Squally wind with wind speed 40- 50 kmph gusting to 60 kmph and heavy to very rain at isolated places with isolated extremely heavy falls very likely .	Thunderstorm with lightning and extremely Heavy rain is very likely at isolated places.	Thunderstorm with lightning very likely at isolated places.	No Warning		No Warning
SAITUAL	Squally wind with wind speed 40- 50 kmph gusting to 60 kmph and heavy to very rain at isolated places with isolated extremely heavy falls very likely .	Thunderstorm with lightning and extremely Heavy rainfall very likely at isolated places.	No Warning	No Warning		No Warning

KHAWZAWL	Squally wind with wind speed 40- 50 kmph gusting to 60 kmph and heavy to very rain at isolated places with isolated extremely heavy falls very likely .	Thunderstorm with lightning and extremely Heavy rainfall very likely at isolated places.	Thunderstorm with lightning very likely at isolated places.	No Warning	No Warning
HNAHTHIAL	Squally wind with wind speed 40- 50 kmph gusting to 60 kmph and heavy to very rain at isolated places with isolated extremely heavy falls very likely .	Thunderstorm with lightning and extremely Heavy rain is very likely at isolated places.	Thunderstorm with lightning very likely at isolated places.	No Warning	No Warning

****The warning for any day is valid from 0830 hours IST of the day till 0830 hrs IST of the next day**

WARNING	Probabilistic Forecast	
	Terms	Probability of Occurrence(%)
WARNING (Take Action)	Unlikely	<25
ALERT (Be prepared)	Likely	25-50
WATCH (Be Updated)	Very Likely	50-75
No Warning (No Action)	Most Likely	>75

Kindly download and use "MAUSAM App" for location specific forecast and warning, "Meghdoot App" for Agromet advisory and "Damini App" for Lightning warning".



Email: wsguwahati@gmail.com; Web Site: www.imdguwahati.gov.in; Phone: 0361- 2968241
For weather enquiry of any station in country: 1800220161 (Toll free)



Govt. of India / भारत सरकार
Ministry of Earth Sciences / पृथ्वी विज्ञान मंत्रालय
India Meteorological Department / भारत मौसम विज्ञान विभाग
Regional Meteorological Centre Guwahati / क्षेत्रीय मौसम विज्ञान केंद्र गुवाहाटी
Meteorological Centre Aizawl / मौसम विज्ञान केंद्र आइजोल
Aizawl, Mizoram – 796017 / आइजोल, मिजोरम - 796017

Date: 27.05.2024

Impact Based Weather Forecast

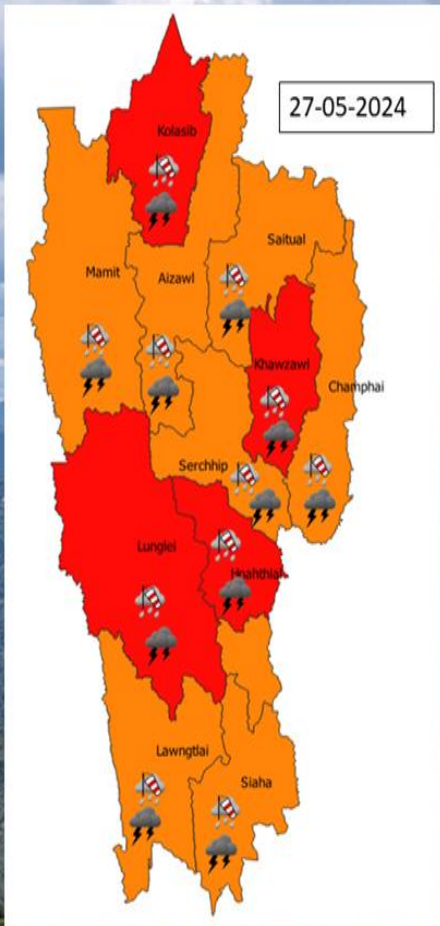
Time: 1400 IST

Sub: The Cyclonic Storm “Remal” over Coastal Bangladesh - Heavy to Extremely Heavy Rainfall Activity over Mizoram during 27-29 May 2024.

Date	Forecast & Warning Based Upon (0830 IST)	Place	Impact Expected	Action Suggested
27 th May 0830 IST to 28 th May 0830 IST	Squally wind with wind speed 40- 50 kmph gusting to 60 kmph and heavy to very heavy rain very likely at isolated places	MAMIT,AIZAWL,CHAMPAI,SERCHIP, LAWNGTLAI,SAIHA,SAITUAL	<ul style="list-style-type: none"> Occasional reduction in visibility due to heavy rainfall. Landslides/landslips may occur. Temporary blockade of roads due to landslides/landslips. Possibility of flash flood Damage to kutcha roads due to very heavy rainfall. Damage to roads due to landslides. Possibilities of damage to vulnerable structure. 	<ul style="list-style-type: none"> Avoid going to areas that face landslides/Land slips problem often. Avoid staying in vulnerable structure. Follow traffic advisories issued if any. Be updated.
	Squally wind with wind speed 40- 50 kmph gusting to 60 kmph and heavy to very heavy rain at isolated places with isolated extremely heavy rainfalls very likely .	KOLASIB,LUNGLEI,KHAWZAWL, HNANTHIAL,		
28 th May 0830 IST to 29 th May 0830 IST	Thunderstorm with lightning and Heavy rainfall very likely at isolated places.	MAMIT,KOLASIB	<ul style="list-style-type: none"> Damage to kutcha roads due to very heavy rainfall. Damage to roads due to landslides. Possibilities of damage to vulnerable structure. 	<ul style="list-style-type: none"> Be updated.
	Thunderstorm with lightning and Heavy rainfall very likely at isolated places.	AIZAWL,CHAMPAI,SERCHIP, LAWNGTLAI, SAIHA, SAITUAL, LUNGLEI, KHAWZAWL, HNANTHIAL,		
29 th May 0830 IST to 30 th May 0830 IST	Thunderstorm with lightning and very Heavy rainfall very likely at isolated places.	MAMIT, KOLASIB, AIZAWL, LAWNGTLAI, SAIHA,LUNGLEI, HNANTHIAL,		



METEOROLOGICAL CENTRE, AIZAWL
DISTRICT LEVEL WARNING dtd
27.05.2024



WARNING	
	No Warning (No Action)
	Watch (Be updated)
	Alert (Be prepared)
	warning (action taken)

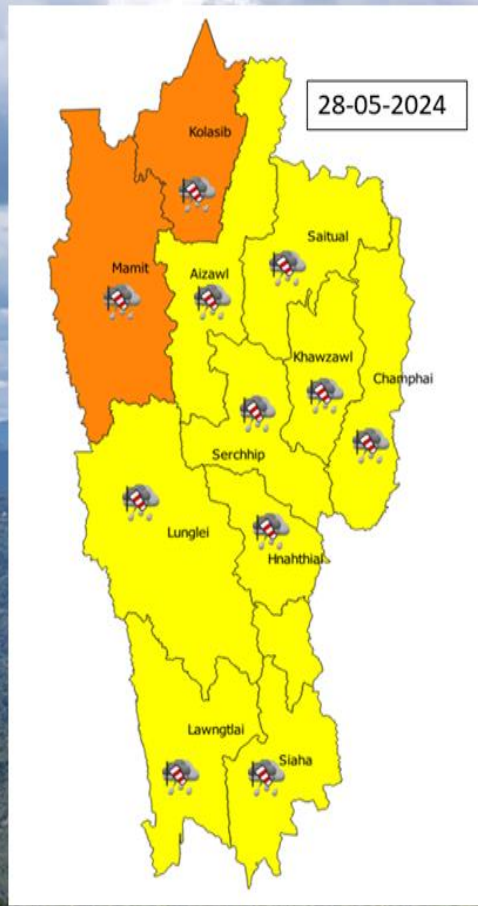
	ISOLATED HEAVY TO VERY HEAVY RAINFALL
	ISOLATED HEAVY RAINFALL
	THUNDERSTORM WITH LIGHTNING
	GUSTY WIND SPEED REACHING 50-60 KMPH



METEOROLOGICAL CENTRE, AIZAWL

DISTRICT LEVEL WARNING dtd

28.05.2024

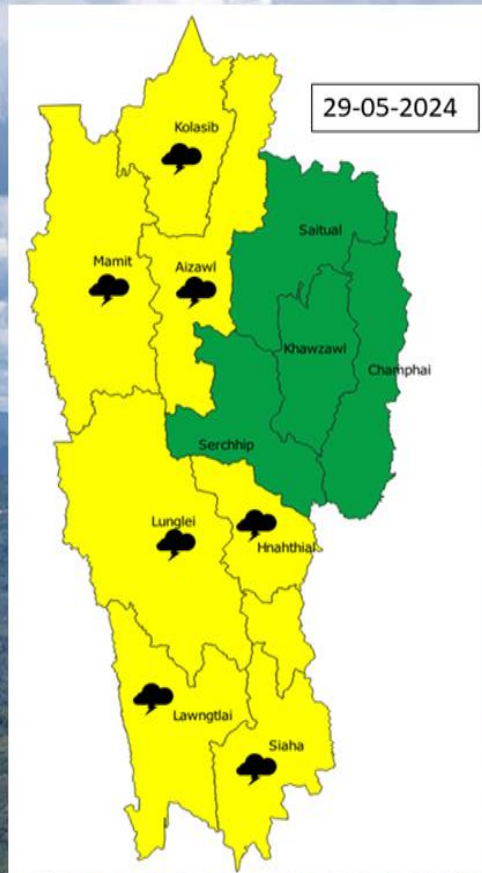


WARNING	
	No Warning (No Action)
	Watch (Be updated)
	Alert (Be prepared)
	warning (action taken)

	ISOLATED HEAVY TO VERY HEAVY RAINFALL
	ISOLATED HEAVY RAINFALL
	THUNDERSTORM WITH LIGHTNING
	GUSTY WIND SPEED REACHING 50-60 KMPH



METEOROLOGICAL CENTRE, AIZAWL
DISTRICT LEVEL WARNING dtd
29.05.2024



29-05-2024

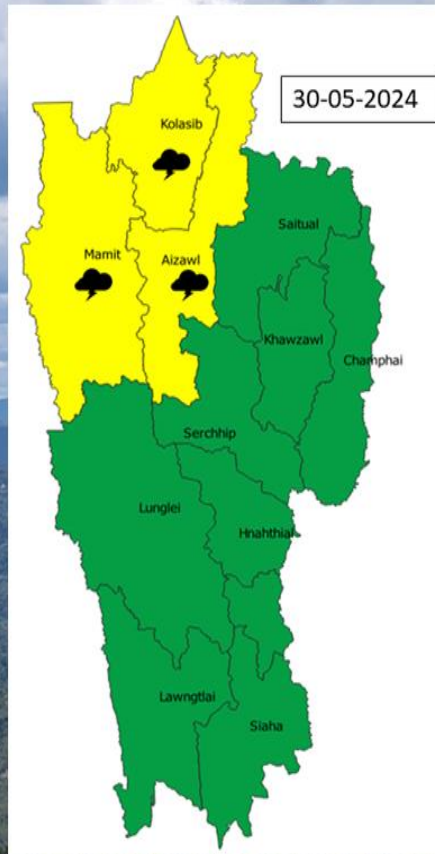


WARNING	
	No Warning (No Action)
	Watch (Be updated)
	Alert (Be prepared)
	warning (action taken)

	ISOLATED HEAVY TO VERY HEAVY RAINFALL
	ISOLATED HEAVY RAINFALL
	THUNDERSTORM WITH LIGHTNING
	GUSTY WIND SPEED REACHING 50-60 KMPH



METEOROLOGICAL CENTRE, AIZAWL
DISTRICT LEVEL WARNING dtd
30.05.2024



WARNING	
	No Warning (No Action)
	Watch (Be updated)
	Alert (Be prepared)
	warning (action taken)

	ISOLATED HEAVY TO VERY HEAVY RAINFALL
	ISOLATED HEAVY RAINFALL
	THUNDERSTORM WITH LIGHTNING
	GUSTY WIND SPEED REACHING 50-60 KMPH

Legends:

Green: No warning Yellow: Be updated Orange- Be prepared Red- Take action

Probability of Occurrence (%): Unlikely:<25%; Likely:25-50%; Very Likely:50-75%; Most Likely:> 75%.

Heavy Rain: 64.5-115.5 mm/day, **Very Heavy Rain:** 115.6-204.4 mm/day, **Extremely Heavy Rain:** >204.5mm/day **Spatial Distribution:** isolated ($\leq 25\%$ of stations gets rain), scattered or at a few places (26 to 50% of stations gets rain), at many places or fairly widespread (51–75% of stations gets rain) and at most places or widespread ($>75\%$ of stations gets rain)

For Detailed weather forecasts & warnings, kindly visit MC Aizawl website (<https://mausam.imd.gov.in/aizawl/>)

Phone: 0389-2573272

E-mail: aizawlmecentre@gmail.com

+++++
Kindly download and use "Mausam" App for location specific forecast and warning "Meghdoot" App for Agromet advisory and "Damini" App for Lightning warning
+++++