

2025-09-07

Time of Issue: 13:59:00 hours IST
(Mid-Day)

ALL INDIA WEATHER SUMMARY AND FORECAST BULLETIN

Significant Weather Features

Weather Forecast and Warnings :

West and Northwest India:

- Heavy to very heavy rainfall at a few places (7-20cm) with isolated extremely heavy falls (≥ 21 cm) very likely over south Gujarat region on 07th September and exceptionally heavy falls (≥ 30 cm) and isolated heavy to very heavy rainfall very likely over Gujarat state on 08th September, 2025.
- Heavy to very heavy rainfall at isolated places (7-20cm) over Rajasthan till 08th September with isolated extremely heavy falls (≥ 21 cm) very likely over Rajasthan on today, the 07th September, 2025.
- Isolated heavy to very heavy rainfall very likely over Konkan on today, the 07th September 2025,
- Light to moderate rain/thunderstorm with isolated heavy rainfall is very likely over Jammu Division, Himachal Pradesh, Punjab, Madhya Maharashtra on 07th; Uttarakhand on 07th, 08th, 12th & 13th; West Uttar Pradesh on 12th & 13th; East Uttar Pradesh during 11th-13th.

East & Central India:

- Isolated heavy rainfall likely over Odisha on 07th, 08th, 10th & 13th September and heavy to very heavy falls during 11th-12th September.
- Light to moderate rain/thunderstorm at most/many places with isolated heavy rainfall likely over West Madhya Pradesh on 07th; East Madhya Pradesh on 07th, 08th & 13th; Vidarbha on 11th & 12th; Chhattisgarh on 07th & during 10th-13th; Sub-Himalayan West Bengal & Sikkim during 07th-13th; Bihar during 09th-11th September.

Northeast India:

- Light/moderate rain/thunderstorm at many places with isolated heavy rainfall likely over Nagaland, Manipur, Mizoram & Tripura on 07th, 10th & 11th, over Arunachal Pradesh, Assam & Meghalaya on 07th & 10th September and heavy to very heavy falls over Assam & Meghalaya, Arunachal Pradesh during 11th-13th and Nagaland, Manipur, Mizoram & Tripura on 12th & 13th September.

South Peninsular India

- Light to moderate rain/thunderstorm with isolated heavy rainfall likely over Tamil Nadu during 07th-10th; Kerala & Mahe on 09th & 10th; Coastal Andhra Pradesh & Yanam on 07th and during 11th – 13th; Interior Karnataka on 10th and Rayalaseema on 12th September.
- Strong surface winds (speed reaching 30-40 kmph) very likely over Coastal Andhra Pradesh & Yanam and Rayalaseema during next 5 days.

*Red color warning does not mean "Red Alert" Red color warning means "Take Action"

Forecast and warning for any day is valid from 0830 hours IST of day till 0830 hours IST of next day

For more details kindly visit <https://mausam.imd.gov.in> or contact 011-2434-4599

(Service to the nation since 1875)

Main Weather Observations:

❖ **Rainfall distribution** (from 0830 hours IST of yesterday to 0830 hours IST of today): **at most places** over Nagaland, Manipur, Mizoram & Tripura, Himachal Pradesh, West Rajasthan, East Rajasthan, Gujarat Region, Saurashtra & Kutch, Konkan & Goa, Vidarbha, Coastal Karnataka and Lakshadweep; **at many places** over Andaman & Nicobar Islands, Assam & Meghalaya, Sub Himalayan West Bengal & Sikkim, Uttarakhand, Haryana-Chandigarh-Delhi, Punjab and West Madhya Pradesh; **at a few places** over Arunachal Pradesh, Odisha, Jammu-Kashmir-Ladakh-Gilgit-Baltistan-Muzaffarabad, East Madhya Pradesh, Madhya Maharashtra, Chhattisgarh, Telangana, Tamil Nadu, Puducherry & Karaikal, South Interior Karnataka and Kerala & Mahe; **at isolated places** over Gangetic West Bengal, Jharkhand, Bihar, Marathwada, Coastal Andhra Pradesh & Yanam, Rayalaseema and North Interior Karnataka; **Dry** over rest of the country.

❖ **Significant rainfall recorded(in cm)** (from 0830 hours IST of yesterday to 0830 hours IST of today): **Gujarat Region:** Madhubun (dist Dadara & Nagar Haveli) 24; Kaprada (dist Valsad) 23; Silvassa (dist Dadara & Nagar Haveli) 21; Nanipalson (dist Valsad), Khanvel (dist Dadara & Nagar Haveli) 17 Each; Poshina (dist Sabarkantha) 15; Dharampur (dist Valsad), Umergam (dist Valsad) 14 Each; Danta (dist Banaskantha), Lakhani (dist Banaskantha) 12 Each; Sanand (dist Ahmedabad), Sagbara (dist Narmada), Prantij (dist Sabarkantha), Wav (dist Banaskantha), Dharoi Colony (dist Mehsana), Satlasana (dist Mehsana), Kadi (dist Mehsana), Palanpur (dist Banaskantha), Santalpur (dist Patan), Talod (dist Sabarkantha) 10 Each; Bhiloda (dist Aravalli), Dhanera (dist Banaskantha), Jhalod (dist Dahod), Radhanpur (dist Patan), Himatanagar (dist Sabarkantha), Dantiwada (dist Banaskantha) 9 Each; Khedbrahma (dist Sabarkantha), Vapi (dist Valsad), Pardi (dist Valsad), Siddhpur (dist Patan), Umerpada (dist Surat), Bayad (dist Aravalli), Modasa (dist Aravalli), Patan (dist Patan), Mahesana (dist Mehsana) 8 Each; Dahod (dist Dahod), Ghandinagar AWS (dist Gandhinagar), Patan AWS (dist Patan), Daman (dist Daman), Becharaji (dist Mehsana), Tharad (dist Banaskantha), Visnagar (dist Mehsana), Vijaynagar (dist Sabarkantha), Suigam (dist Banaskantha), Khergam (dist Navsari), Idar (dist Sabarkantha), Abad City (dist Ahmedabad), Ukai (dist Surat), Dhanpur (dist Dahod) 7 Each; **West Rajasthan:** Sanchore (dist Jalore) 21; Jalore (dist Jalore) 20; Sumerpur SR (dist Pali) 11; Ahore SR (dist Jalore), Bagoda SR (dist Jalore) 10 Each; Sedwa SR (dist Barmer), Raniwada SR (dist Jalore) 9 Each; Sayla SR (dist Jalore), Dorimanna SR (dist Barmer), Gudamalani SR (dist Barmer) 8 Each; Osian SR (dist Jodhpur), Desuri (dist Pali) 7 Each; **East Rajasthan:** Gogunda SR (dist Udaipur) 14; Pindwara (dist Sirohi) 13; Kotda SR (dist Udaipur) 12; Mounntabu Tehsil SR (dist Sirohi) 11; Kherwara (dist Udaipur), Bhopalsagar SR (dist Chittorgarh), Kanva SR (dist Dungarpur) 9 Each; Sheoganj (dist Sirohi), Jhadol SR (dist Udaipur), Vallabh Nagar (dist Udaipur), Reodar SR (dist Sirohi), Sirohi (dist Sirohi) 8 Each; Shergarh SR (dist Banswara), Sajjangarh SR (dist Banswara), Dungarpur Tehsil SR (dist Dungarpur), Nasirabad (dist Ajmer) 7 Each; **Nagaland, Manipur, Mizoram & Tripura:** Budhjongnagar ARG (dist West Tripura) 14; Ashapara AWS (dist North Tripura), Gandachara AWS (dist Dhalai), Hrc Nagicherra ARG (dist West Tripura) 10 Each; Dharmanagar/panisagar (dist North Tripura), Gokulpur AWS (dist Gomati), Udaipur (dist Gomati), Amarapur (dist Gomati), Lembuchhera (dist West Tripura) 9 Each; Arundhutinagar (dist West Tripura), Agartala AP (dist West Tripura), A D Nagar AWS (dist West Tripura), Khowai (dist Khowai) 7 Each; **Madhya Maharashtra:** Peth (dist Nashik) 13; Akkalkuwa (dist Nandurbar) 11; Harsul - Fmo (dist Nashik) 7; **Konkan & Goa:** Talasari (dist Palghar) 12; Palghar ARG (dist Palghar), Dahanu (dist Palghar) 11 Each; Vasai (dist Palghar) 10; Vikramgad (dist Palghar), Jawhar (dist Palghar) 9 Each; **Odisha:** Bhuban (dist Dhenkanal) 11; Kotagarh (dist Kandhamal) 7; **Saurashtra & Kutch:** Bhachau (dist Kutch) 11; Morbi (dist Morbi), Botad (dist Botad) 10 Each; Bachau AWS (dist Kutch) 9; Malia Miana (dist Morbi), Paddhari (dist Rajkot) 8 Each; Jamkandorna (dist Rajkot), Halvad (dist Morbi), Tankara (dist Morbi), Rapar (dist Kutch) 7 Each; **Tamil Nadu, Puducherry & Karaikal:** Tirupuvanam (dist Sivaganga), Gingee (dist Villupuram) 10 Each; Rscl Vallam (dist Villupuram) 9; Chettikulam (dist Perambalur), Ayinkudi (dist Pudukkottai), Rscl-3 Anandhapuram (dist Villupuram) 7 Each; **Bihar:** Gaunaha (dist West Champaran) 9; **Assam & Meghalaya:** B P Ghat (dist Sribhumi) 9; Gharmura (dist Hailakandi) 8; Golaghat PTO (dist Golaghat) 7; **West Madhya Pradesh:** Narsingarh (dist Rajgarh) 8; **Telangana:** Chandrugonda (dist B. Kothagudem) 8; **East Madhya Pradesh:** Hanumana (dist Rewa) 8; **Punjab:** Ludhiana (dist Ludhiana) 8; Khawaspur Irr (dist Tarn Taran), Bul Irr (dist Ludhiana) 7 Each.

❖ **Heavy Rainfall observed** (from 0830 hours IST of yesterday to 0830 hours IST of today): **Extremely heavy rain** at isolated places over West Rajasthan and Gujarat Region. **Heavy to very heavy rain** at isolated places over Nagaland, Manipur, Mizoram & Tripura, West Rajasthan, East Rajasthan, Gujarat Region, Konkan & Goa and Madhya Maharashtra. **Heavy rain** at isolated places over Assam & Meghalaya, Odisha, Bihar, Punjab, West Madhya Pradesh, East Madhya Pradesh, Saurashtra & Kutch, Telangana and Tamil Nadu, Puducherry & Karaikal.

*Red color warning does not mean "Red Alert" Red color warning means "Take Action"

Forecast and warning for any day is valid from 0830 hours IST of day till 0830 hours IST of next day

For more details kindly visit <https://mausam.imd.gov.in> or contact 011-2434-4599

(Service to the nation since 1875)

❖ **Minimum Temperature Departures (as on 07-09-2025):** **markedly above normal(> 5.1°C)** at isolated places over Assam & Meghalaya, Bihar, East Uttar Pradesh, West Uttar Pradesh, Himachal Pradesh, Jammu-KashmirLadakh-Gilgit-Baltistan-Muzaffarabad, West Madhya Pradesh and Tamil Nadu, Puducherry & Karaikal. **appreciably above normal(3.1°C to 5.0°C)** at many places over East Madhya Pradesh; at isolated places over Sub Himalayan West Bengal & Sikkim, Odisha and Saurashtra & Kutch. **above normal(1.6°C to 3.0°C)** at few places over Gangetic West Bengal, Coastal Andhra Pradesh & Yanam and Lakshadweep; at isolated places over Nagaland, Manipur, Mizoram & Tripura, Uttarakhand, Haryana-Chandigarh-Delhi, East Rajasthan, Gujarat Region, Madhya Maharashtra, Vidarbha and South Interior Karnataka. **near normal(-1.5°C to 1.5°C)** at many places over Chhattisgarh; at most places over Andaman & Nicobar Islands, Arunachal Pradesh, Jharkhand, Punjab, West Rajasthan, Konkan & Goa, Marathwada, Telangana, Rayalaseema, Coastal Karnataka, North Interior Karnataka and Kerala & Mahe. **The lowest minimum temperature** of 18.0°C is reported at KHANDWA (MADHYA PRADESH), and JEUR (MAHARASHTRA) over the Plains of India.

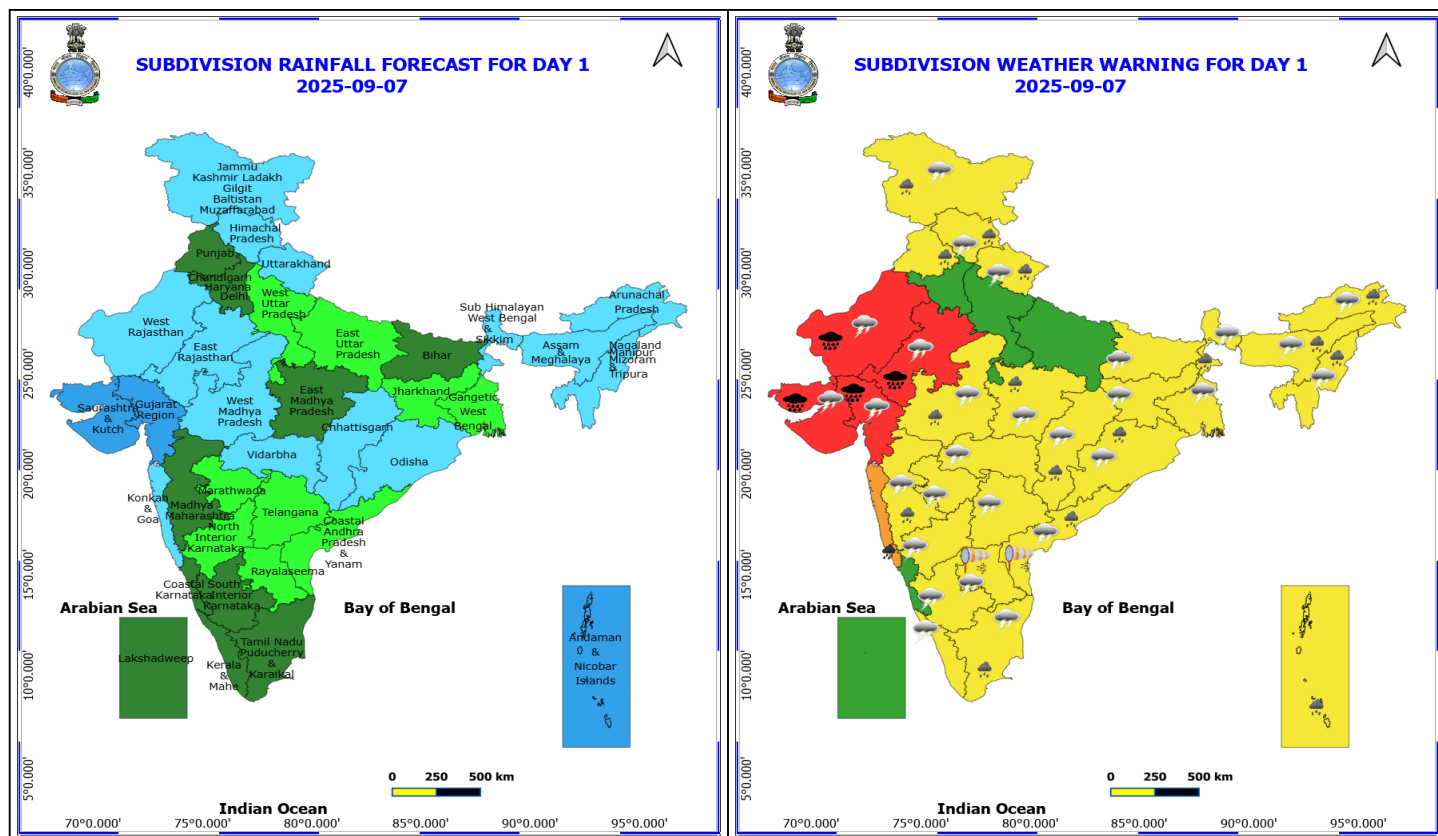
❖ **Maximum Temperature Departures (as on 06-09-2025):** **markedly above normal(> 5.1°C)** at isolated places over Assam & Meghalaya, Odisha, Jammu-KashmirLadakh-Gilgit-Baltistan-Muzaffarabad and Coastal Andhra Pradesh & Yanam. **appreciably above normal(3.1°C to 5.0°C)** at few places over Jharkhand and Chhattisgarh; at isolated places over Gangetic West Bengal, Bihar, East Uttar Pradesh, East Madhya Pradesh and Tamil Nadu, Puducherry & Karaikal. **above normal(1.6°C to 3.0°C)** at many places over Nagaland, Manipur, Mizoram & Tripura; at few places over Arunachal Pradesh, Sub Himalayan West Bengal & Sikkim, Telangana, Rayalaseema and Kerala & Mahe; at isolated places over West Uttar Pradesh, Uttarakhand, Vidarbha and North Interior Karnataka. **near normal(-1.5°C to 1.5°C)** at many places over Madhya Maharashtra and Marathwada; at most places over Andaman & Nicobar Islands, Coastal Karnataka, South Interior Karnataka and Lakshadweep; at few places over Haryana-Chandigarh-Delhi, Himachal Pradesh, Saurashtra & Kutch and Konkan & Goa; at isolated places over Punjab, West Rajasthan and West Madhya Pradesh. **The highest maximum temperature** of 39.0°C was reported at PALAYAMKOTTAI (TAMIL NADU).

Meteorological Analysis (Based on 0830 hours IST)

- The **depression** over Southwest Rajasthan and neighbourhood moved southwestwards with the speed of 12 kmph during past 6 hours and lay centred at 0830 hrs IST of today, the 07th September, 2025, over North Gujarat and adjoining Southwest Rajasthan near latitude 24.2°N and longitude 71.8°E, 40km west of Deesa (Gujarat), 50 Km north-northeast of Radhanpur (Gujarat) and 230 km east-northeast of Bhuj (Gujarat). It is very likely to move west-southwestwards during next 2 days.
- The **monsoon trough** now passes through centre of **depression** over North Gujarat and adjoining Southwest Rajasthan, Sheopur, Guna, Damoh, Mana, Gopalpur and thence east-southeastwards to east central Bay of Bengal.
- The **trough** now runs from cyclonic circulation associated with **depression** over North Gujarat and adjoining Southwest Rajasthan to Chhattisgarh across Madhya Pradesh between 3.1 & 7.6 km above mean sea level tilting southwards with height.
- An **upper air cyclonic circulation** lies over southeast Uttar Pradesh and neighbourhood at 1.5 km above mean sea level.
- The **upper air cyclonic circulation** over northwest Bay of Bengal & adjoining west central Bay of Bengal off south Odisha & north Andhra Pradesh coasts between 3.1 & 5.8 km above mean sea level persists.
- An **upper air cyclonic circulation** lies over south Assam between 3.1 & 5.8 km above mean sea level tilting southwards with height.
- The **Western Disturbance** as a trough in middle & upper tropospheric westerlies with its axis at 5.8 km above mean sea level roughly along Long. 69°E to the north of Lat. 28°N persists.
- The **trough** from South Punjab to East Central Arabian Sea off Konkan coast across the above cyclonic circulation associated with **depression** over North Gujarat and adjoining Southwest Rajasthan, eastern parts of Gujarat region, north Konkan between 3.1 & 7.6 km above mean sea level has become less marked.

Weather Outlook for subsequent 3 days

- Isolated to scattered rainfall likely over the entire country.



7 September (Day 1)

❖ **Heavy to Very Heavy Rainfall with isolated Extremely Heavy Rainfall** very likely at isolated places over Gujarat State and Rajasthan.

❖ **Heavy to Very Heavy Rainfall** very likely at isolated places over Konkan & Goa.

❖ **Heavy Rainfall** very likely at isolated places over Andaman & Nicobar Islands, Arunachal Pradesh, Assam & Meghalaya, Chhattisgarh, Coastal Andhra Pradesh, Himachal Pradesh, Jammu-Kashmir-Ladakh-Gilgit-Baltistan-Muzaffarabad, Madhya Maharashtra, Madhya Pradesh, Nagaland, Manipur, Mizoram and Tripura, Odisha, Punjab, Sub Himalayan West Bengal & Sikkim, Tamil Nadu Puducherry & Karaikal and Uttarakhand.

❖ **Thunderstorm accompanied with lightning & gusty winds(30-40kmph)** very likely at isolated places over Andhra Pradesh, Bihar, Interior Karnataka, Jharkhand, Kerala & Mahe, Odisha, Sub Himalayan West Bengal & Sikkim, Tamil Nadu Puducherry & Karaikal and Telangana.

❖ **Thunderstorm accompanied with Lightning** very likely at isolated places over Arunachal Pradesh, Assam & Meghalaya, Chhattisgarh, Gangetic West Bengal, Gujarat State, Himachal Pradesh, Jammu-Kashmir-Ladakh-Gilgit-Baltistan-Muzaffarabad, Madhya Pradesh, Maharashtra, Nagaland, Manipur, Mizoram and Tripura, Rajasthan and Uttarakhand.

❖ **Strong Surface Winds** very likely at isolated places over Andhra Pradesh.

- **Squally wind with speed reaching 45 kmph to 55 kmph gusting to 65 kmph** is likely to prevail along and off Somalia and Oman coasts, many parts of westcentral & southwest Arabian Sea.
- **Squally weather with wind speed reaching 40 - 50 kmph gusting to 60 kmph** likely to prevail along and off north Konkan coasts; some parts of central adjoining northwest Arabian sea, few parts of Comorin area & southwest Bay of Bengal.

*Red color warning does not mean "Red Alert" Red color warning means "Take Action"

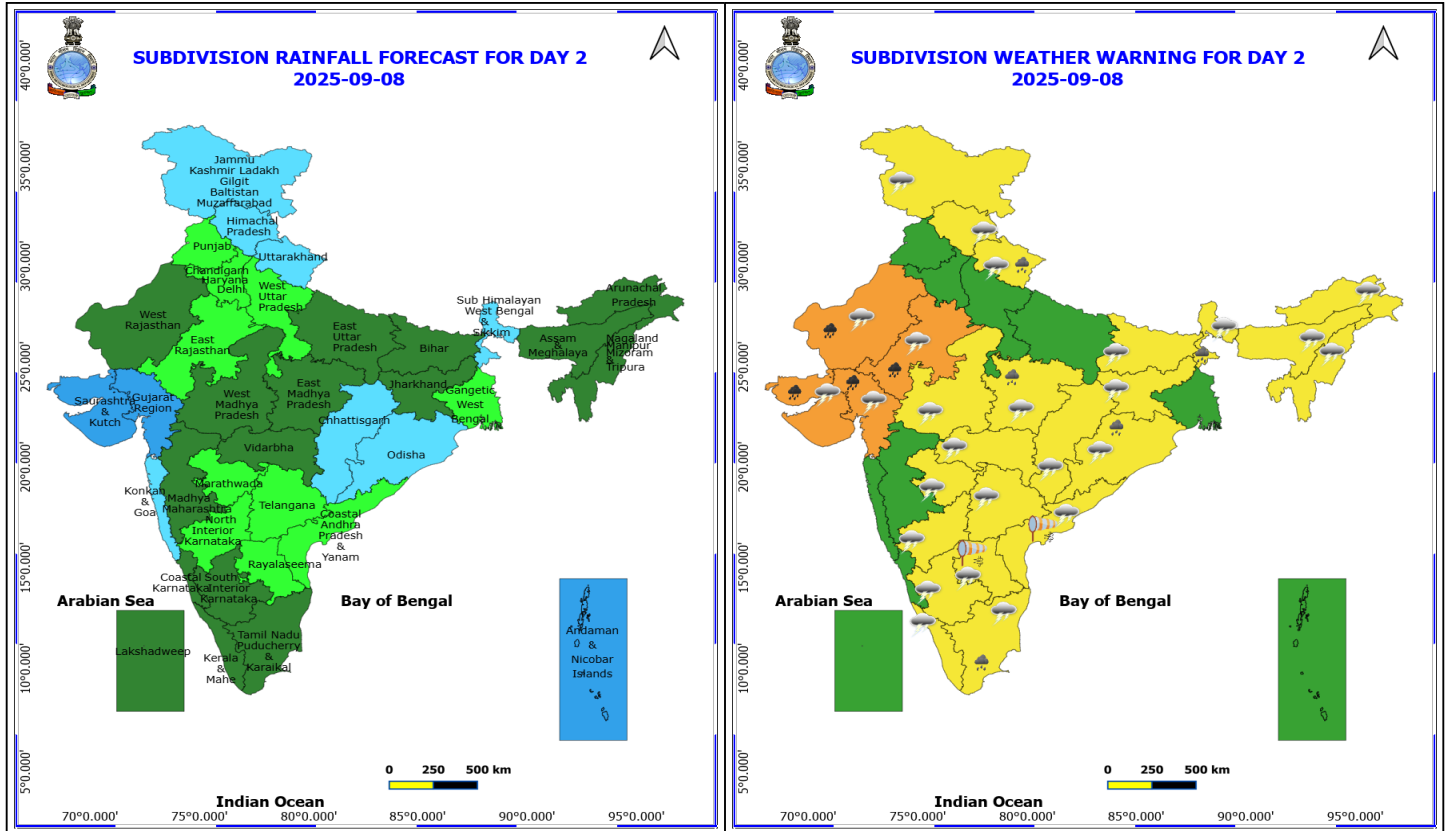
Forecast and warning for any day is valid from 0830 hours IST of day till 0830 hours IST of next day

For more details kindly visit <https://mausam.imd.gov.in> or contact 011-2434-4599

(Service to the nation since 1875)



- **Squally weather with wind speed reaching 45 - 55 kmph gusting to 65 kmph** likely to prevail along and off Gujarat coasts and many parts of northeast Arabian Sea.



8 September (Day 2)

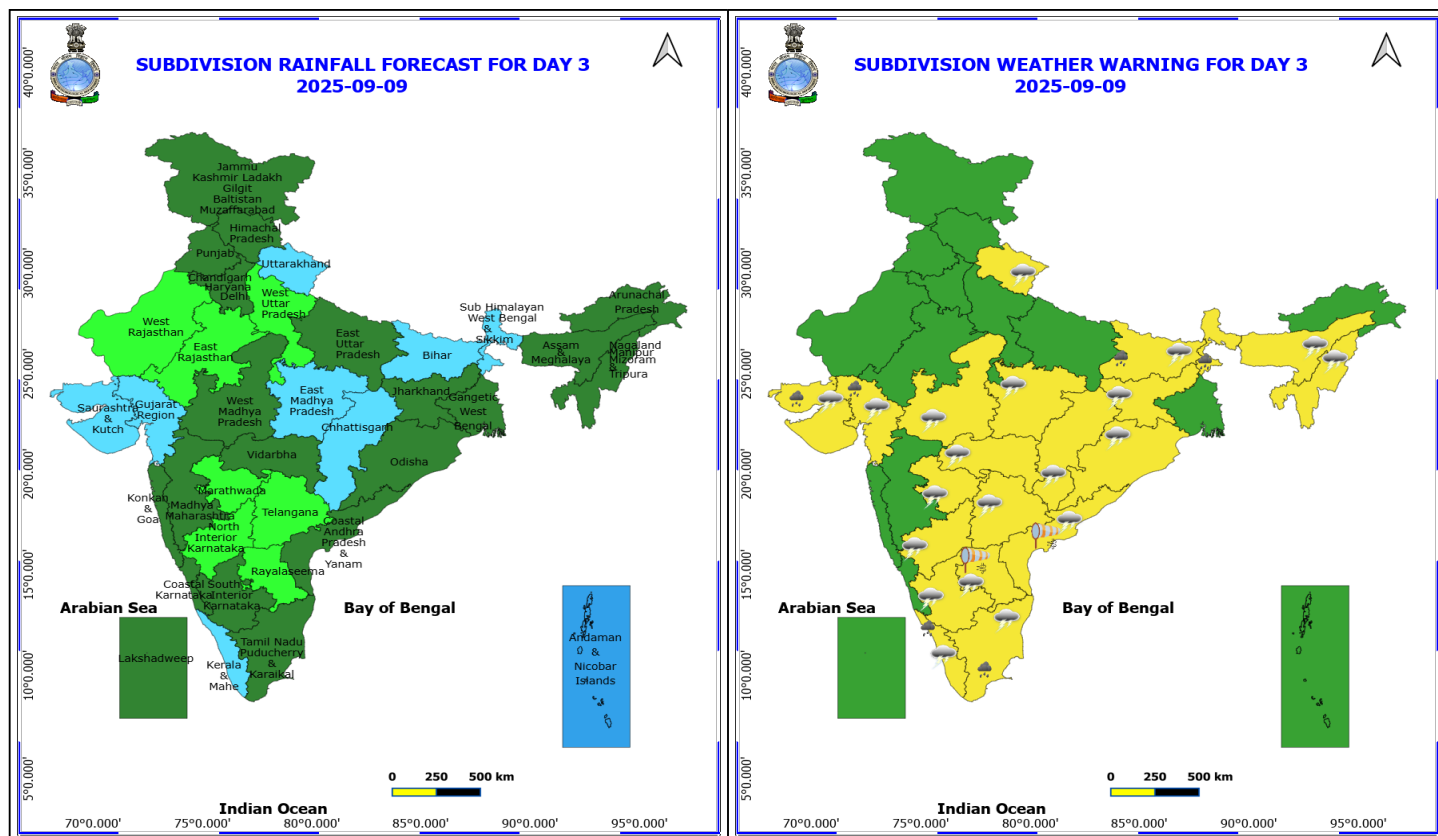
- ❖ **Heavy to Very Heavy Rainfall** very likely at isolated places over Gujarat State and Rajasthan.
- ❖ **Heavy Rainfall** very likely at isolated places over East Madhya Pradesh, Odisha, Sub Himalayan West Bengal & Sikkim, Tamil Nadu Puducherry & Karaikal and Uttarakhand.
- ❖ **Thunderstorm accompanied with lightning & gusty winds(30-40kmph)** very likely at isolated places over Andhra Pradesh, Bihar, Interior Karnataka, Jharkhand, Kerala & Mahe, Odisha, Sub Himalayan West Bengal & Sikkim, Tamil Nadu Puducherry & Karaikal and Telangana.
- ❖ **Thunderstorm accompanied with Lightning** very likely at isolated places over Arunachal Pradesh, Assam & Meghalaya, Chhattisgarh, Gujarat State, Himachal Pradesh, Jammu-Kashmir-Ladakh-Gilgit-Baltistan-Muzaffarabad, Madhya Pradesh, Marathwada, Nagaland, Manipur, Mizoram and Tripura, Rajasthan, Uttarakhand and Vidarbha.
- ❖ **Strong Surface Winds** very likely at isolated places over Andhra Pradesh.
 - **Squally wind with speed reaching 45 kmph to 55 kmph gusting to 65 kmph** is likely to prevail along and off Somalia and Oman coasts, most parts of westcentral adjoining northwest Arabian Sea; many parts of southwest Arabian Sea.
 - **Squally weather with wind speed reaching 40 - 50 kmph gusting to 60 kmph** likely to prevail some parts of eastcentral and few parts of north Arabian sea, few parts of Comorin area & southwest Bay of Bengal.
 - **Squally weather with wind speed reaching 45 - 55 kmph gusting to 65 kmph** likely to prevail along and off Gujarat coasts and many parts of northeast Arabian Sea.

***Red color warning does not mean "Red Alert" Red color warning means "Take Action"**

Forecast and warning for any day is valid from 0830 hours IST of day till 0830 hours IST of next day

For more details kindly visit <https://mausam.imd.gov.in> or contact 011-2434-4599

(Service to the nation since 1875)



9 September (Day 3)

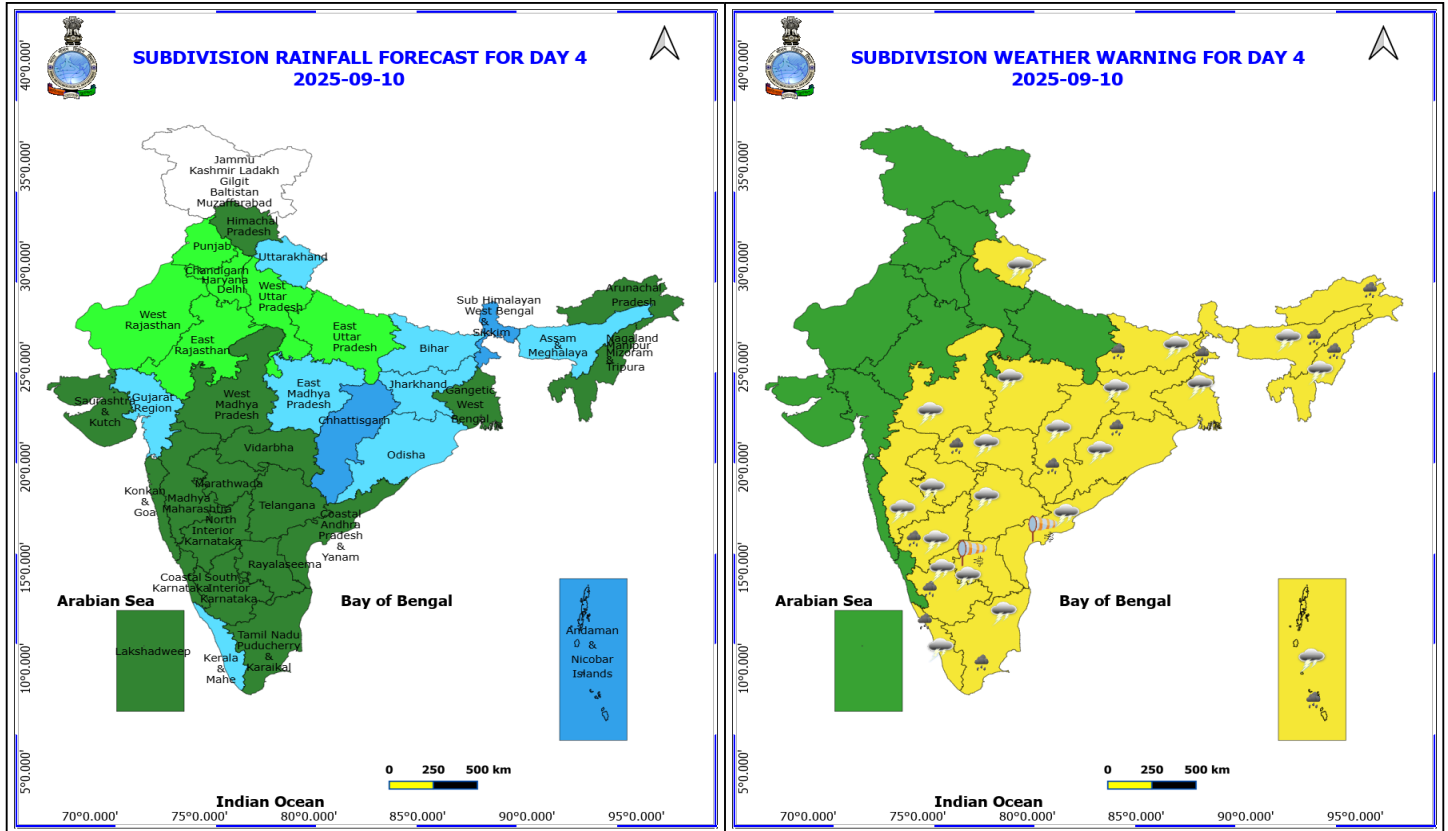
- ❖ **Heavy Rainfall** very likely at isolated places over Bihar, Gujarat State, Kerala & Mahe, Sub Himalayan West Bengal & Sikkim and Tamil Nadu Puducherry & Karaikal.
- ❖ **Thunderstorm accompanied with lightning & gusty winds(30-40kmph)** very likely at isolated places over Andhra Pradesh, Bihar, Interior Karnataka, Jharkhand, Kerala & Mahe, Odisha, Tamil Nadu Puducherry & Karaikal and Telangana.
- ❖ **Thunderstorm accompanied with Lightning** very likely at isolated places over Assam & Meghalaya, Chhattisgarh, Gujarat State, Madhya Pradesh, Marathwada, Nagaland, Manipur, Mizoram and Tripura, Uttarakhand and Vidarbha.
- ❖ **Strong Surface Winds** very likely at isolated places over Andhra Pradesh.
 - **Squally wind with speed reaching 45 kmph to 55 kmph gusting to 65 kmph** is likely to prevail along and off Somalia and Oman coasts, some parts of westcentral & southwest Arabian sea.
 - **Squally weather with wind speed reaching 40 - 50 kmph gusting to 60 kmph** likely to prevail along and off north Gujarat adjoining Pakistan coasts; few parts of northeast Arabian sea and Comorin area.

*Red color warning does not mean "Red Alert" Red color warning means "Take Action"

Forecast and warning for any day is valid from 0830 hours IST of day till 0830 hours IST of next day

For more details kindly visit <https://mausam.imd.gov.in> or contact 011-2434-4599

(Service to the nation since 1875)



10 September (Day 4)

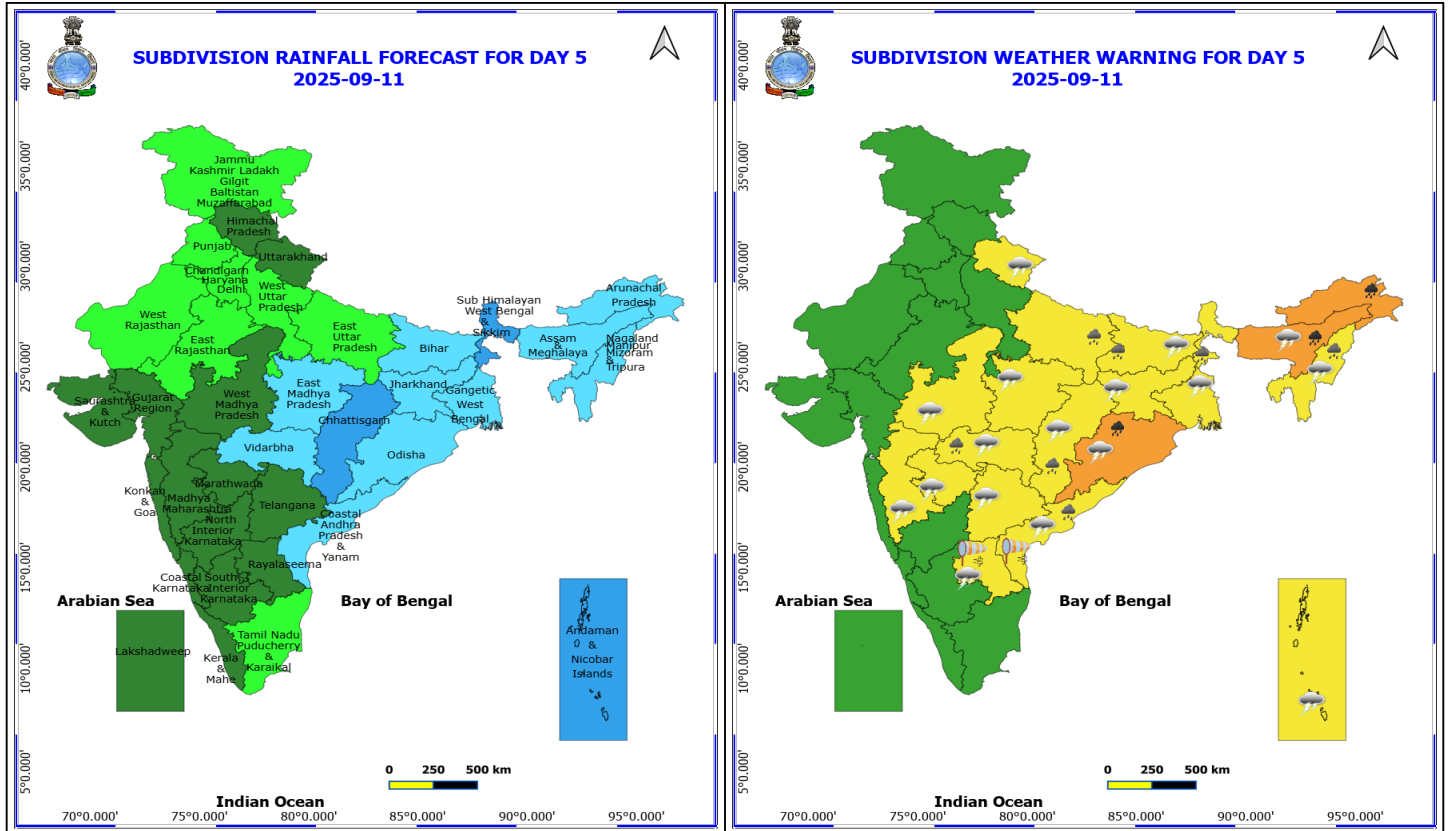
- ❖ **Heavy Rainfall** likely at isolated places over Andaman & Nicobar Islands, Arunachal Pradesh, Assam & Meghalaya, Bihar, Chhattisgarh, Interior Karnataka, Kerala & Mahe, Nagaland, Manipur, Mizoram and Tripura, Odisha, Sub Himalayan West Bengal & Sikkim, Tamil Nadu Puducherry & Karaikal and Vidarbha.
- ❖ **Thunderstorm accompanied with lightning & gusty winds(40-50kmph)** likely at isolated places over Andaman & Nicobar Islands.
- ❖ **Thunderstorm accompanied with lightning & gusty winds(30-40kmph)** likely at isolated places over Andhra Pradesh, Bihar, Gangetic West Bengal, Interior Karnataka, Jharkhand, Kerala & Mahe, Odisha, Tamil Nadu Puducherry & Karaikal and Telangana.
- ❖ **Thunderstorm accompanied with Lightning** likely at isolated places over Assam & Meghalaya, Chhattisgarh, Madhya Pradesh, Maharashtra, Nagaland, Manipur, Mizoram and Tripura and Uttarakhand.
- ❖ **Strong Surface Winds** likely at isolated places over Andhra Pradesh.
 - **Squally wind with speed reaching 45 kmph to 55 kmph gusting to 65 kmph** is likely to prevail along and off Somalia and Oman coasts, some parts of westcentral & southwest Arabian sea.
 - **Squally weather with wind speed reaching 40 - 50 kmph gusting to 60 kmph** likely to prevail along and off Pakistan coasts adjoining north Arabian sea.

*Red color warning does not mean "Red Alert" Red color warning means "Take Action"

Forecast and warning for any day is valid from 0830 hours IST of day till 0830 hours IST of next day

For more details kindly visit <https://mausam.imd.gov.in> or contact 011-2434-4599

(Service to the nation since 1875)



11 September (Day 5)

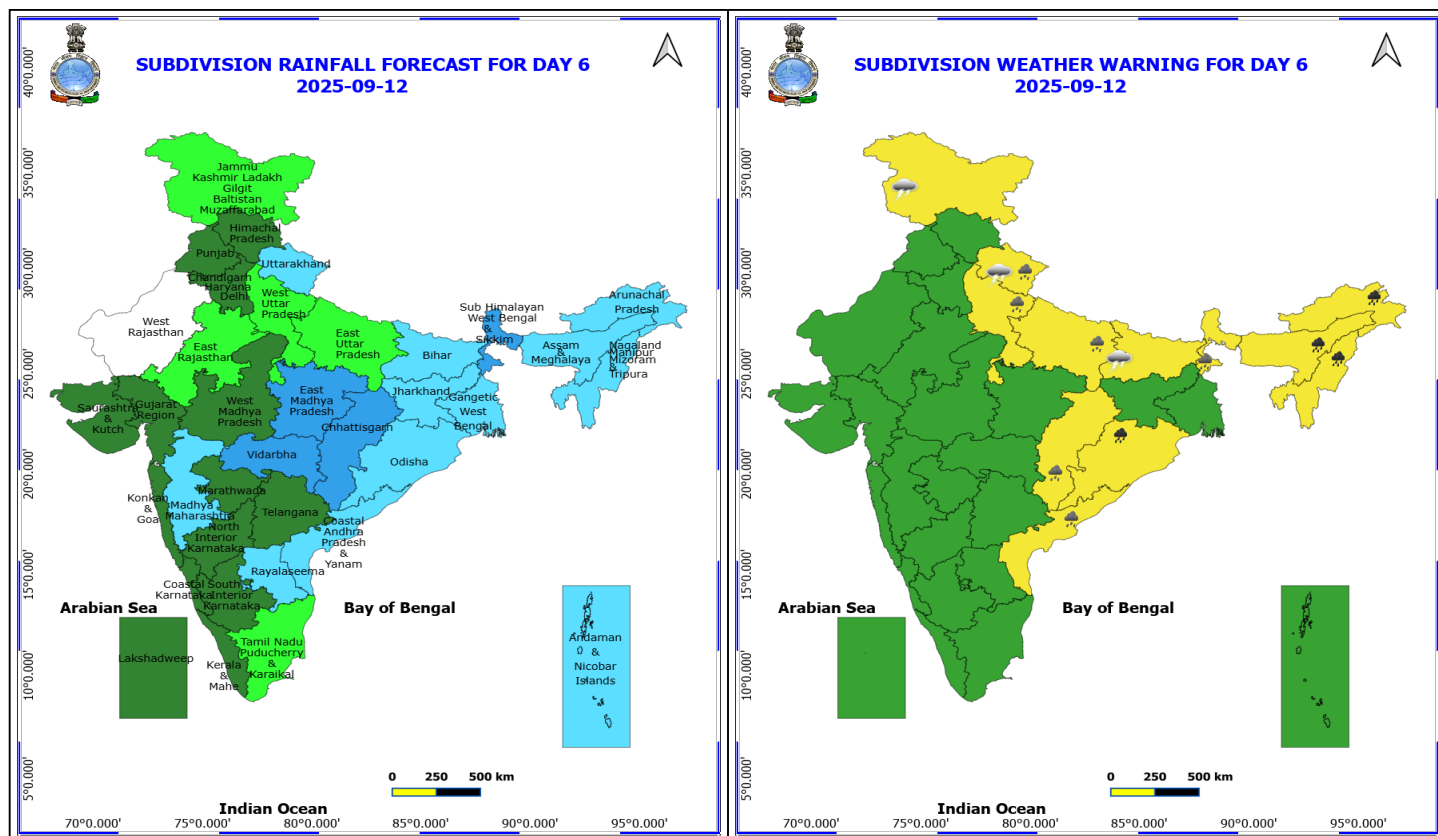
- ❖ **Heavy to Very Heavy Rainfall** likely at isolated places over Arunachal Pradesh, Assam & Meghalaya and Odisha.
- ❖ **Heavy Rainfall** likely at isolated places over Bihar, Chhattisgarh, Coastal Andhra Pradesh, East Uttar Pradesh, Nagaland, Manipur, Mizoram and Tripura, Sub Himalayan West Bengal & Sikkim and Vidarbha.
- ❖ **Thunderstorm accompanied with lightning & gusty winds(30-40kmph)** likely at isolated places over Andaman & Nicobar Islands, Andhra Pradesh, Bihar, Gangetic West Bengal, Jharkhand, Odisha and Telangana.
- ❖ **Thunderstorm accompanied with Lightning** likely at isolated places over Assam & Meghalaya, Chhattisgarh, Madhya Pradesh, Maharashtra, Nagaland, Manipur, Mizoram and Tripura and Uttarakhand.
- ❖ **Strong Surface Winds** likely at isolated places over Andhra Pradesh.
 - **Squally wind with speed reaching 45 kmph to 55 kmph gusting to 65 kmph** is likely to prevail along and off Somalia coasts, some parts of southwest & westcentral Arabian Sea.
 - **Squally weather with wind speed reaching 40 - 50 kmph gusting to 60 kmph** likely to prevail over Gulf of Mannar; Tamil Nadu coasts off south Andhra Pradesh coasts and many parts of southwest; adjoining some parts of westcentral & southeast Bay of Bengal.

*Red color warning does not mean "Red Alert" Red color warning means "Take Action"

Forecast and warning for any day is valid from 0830 hours IST of day till 0830 hours IST of next day

For more details kindly visit <https://mausam.imd.gov.in> or contact 011-2434-4599

(Service to the nation since 1875)



12 September (Day 6)

- ❖ **Heavy to Very Heavy Rainfall** likely at isolated places over Arunachal Pradesh, Assam & Meghalaya, Nagaland, Manipur, Mizoram and Tripura and Odisha.
- ❖ **Heavy Rainfall** likely at isolated places over Chhattisgarh, Coastal Andhra Pradesh, Sub Himalayan West Bengal & Sikkim, Uttar Pradesh and Uttarakhand.
- ❖ **Thunderstorm accompanied with lightning & gusty winds(30-40kmph)** likely at isolated places over Bihar and Jammu-Kashmir-Ladakh-Gilgit-Baltistan-Muzaffarabad.
- ❖ **Thunderstorm accompanied with Lightning** likely at isolated places over Uttarakhand.

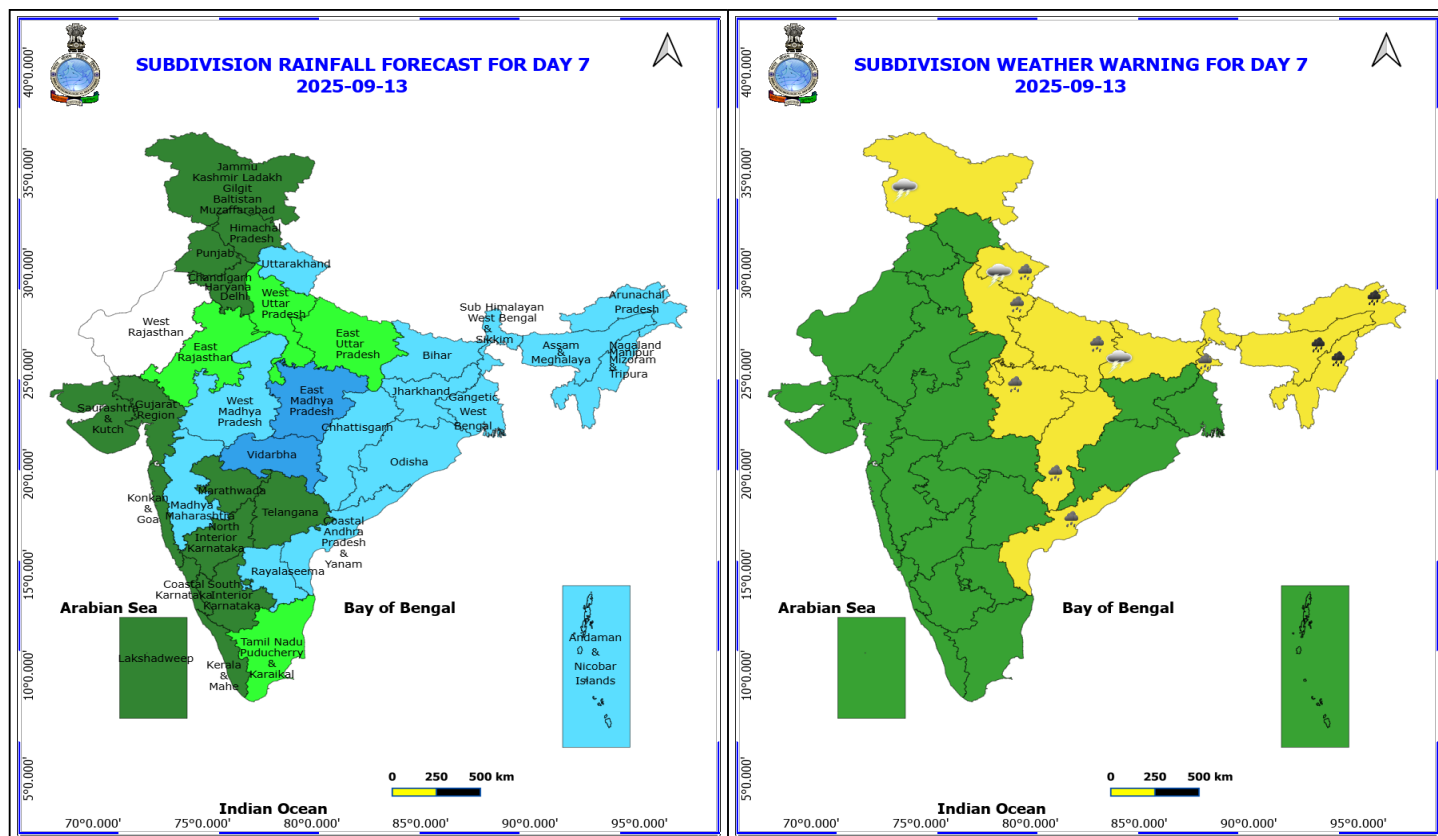
No Fishermen Warning

*Red color warning does not mean "Red Alert" Red color warning means "Take Action"

Forecast and warning for any day is valid from 0830 hours IST of day till 0830 hours IST of next day

For more details kindly visit <https://mausam.imd.gov.in> or contact 011-2434-4599

(Service to the nation since 1875)



13 September (Day 7)

- ❖ **Heavy to Very Heavy Rainfall** likely at isolated places over Arunachal Pradesh, Assam & Meghalaya and Nagaland, Manipur, Mizoram and Tripura.
- ❖ **Heavy Rainfall** likely at isolated places over Chhattisgarh, Coastal Andhra Pradesh, East Madhya Pradesh, Sub Himalayan West Bengal & Sikkim, Uttar Pradesh and Uttarakhand.
- ❖ **Thunderstorm accompanied with lightning & gusty winds(30-40kmph)** likely at isolated places over Bihar and Jammu-Kashmir-Ladakh-Gilgit-Baltistan-Muzaffarabad.
- ❖ **Thunderstorm accompanied with Lightning** likely at isolated places over Uttarakhand.

No Fishermen Warning

***Red color warning does not mean "Red Alert" Red color warning means "Take Action"**

Forecast and warning for any day is valid from 0830 hours IST of day till 0830 hours IST of next day

For more details kindly visit <https://mausam.imd.gov.in> or contact 011-2434-4599

(Service to the nation since 1875)

Flash Flood Warnings

24 hours Outlook for the Flash Flood Risk (FFR) till 1130 IST of 08-09-2025 :

Moderate to High flash flood risk likely over few watersheds & neighbourhoods of following Met Sub-divisions during next 24 hours.

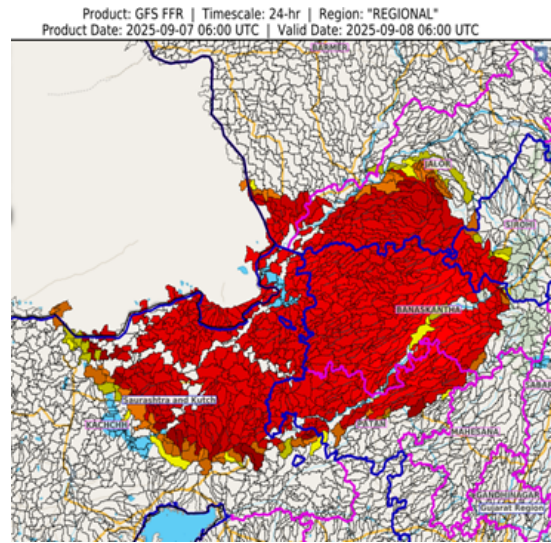
Gujarat Region - Banaskantha and Patan districts.

Saurashtra & Kutch - Kachchh district.

West Rajasthan - Barmer and Jalor districts.

Adjoining East Rajasthan - Sirohi district.

Surface runoff/ Inundation may occur at some fully saturated soils & low-lying areas over Area of Concern (AoC) as shown in map due to expected rainfall occurrence in next 24 hours.



*Red color warning does not mean "Red Alert" Red color warning means "Take Action"

Forecast and warning for any day is valid from 0830 hours IST of day till 0830 hours IST of next day

For more details kindly visit <https://mausam.imd.gov.in> or contact 011-2434-4599

(Service to the nation since 1875)



Table-1

7 Days Rainfall Forecast

S.No.	Subdivision	7- Sep	8- Sep	9- Sep	10- Sep	11- Sep	12- Sep	13- Sep
		Day 1	Day 2	Day 3	Day 4	Day 5	Day 6	Day 7
1	ANDAMAN & NICOBAR ISLANDS	WS	WS	WS	WS	WS	FWS	FWS
2	ARUNACHAL PRADESH	FWS	SCT	SCT	SCT	FWS	FWS	FWS
3	ASSAM & MEHGHALAYA	FWS	SCT	SCT	FWS	FWS	FWS	FWS
4	N. M. M. & T.	FWS	SCT	SCT	SCT	FWS	FWS	FWS
5	S.H. WEST BENGAL & SIKKIM	FWS	FWS	FWS	WS	WS	WS	FWS
6	GANGETIC WEST BENGAL	ISOL	ISOL	SCT	SCT	FWS	FWS	FWS
7	ODISHA	FWS	FWS	SCT	FWS	FWS	FWS	FWS
8	JHARKHAND	ISOL	SCT	SCT	FWS	FWS	FWS	FWS
9	BIHAR	SCT	SCT	FWS	FWS	FWS	FWS	FWS
10	EAST UTTAR PRADESH	ISOL	SCT	SCT	ISOL	ISOL	ISOL	ISOL
11	WEST UTTAR PRADESH	ISOL	ISOL	ISOL	ISOL	ISOL	ISOL	ISOL
12	UTTARAKHAND	FWS	FWS	FWS	FWS	SCT	FWS	FWS
13	HARYANA, CHD & DELHI	SCT	ISOL	SCT	ISOL	ISOL	SCT	SCT
14	PUNJAB	SCT	ISOL	SCT	ISOL	ISOL	SCT	SCT
15	HIMACHAL PRADESH	FWS	FWS	SCT	SCT	SCT	SCT	SCT
16	JAMMU AND KASHMIR AND LADAKH	FWS	FWS	SCT	DRY	ISOL	ISOL	SCT
17	WEST RAJASTHAN	FWS	SCT	ISOL	ISOL	ISOL	DRY	DRY
18	EAST RAJASTHAN	FWS	ISOL	ISOL	ISOL	ISOL	ISOL	ISOL
19	WEST MADHYA PRADESH	FWS	SCT	SCT	SCT	SCT	SCT	FWS
20	EAST MADHYA PRADESH	SCT	SCT	FWS	FWS	FWS	WS	WS
21	GUJRAT REGION	WS	WS	FWS	FWS	SCT	SCT	SCT
22	SAURASHTRA & KUTCH	WS	WS	FWS	SCT	SCT	SCT	SCT
23	KONKAN & GOA	FWS	FWS	SCT	SCT	SCT	SCT	SCT
24	MADHYA MAHARASHTRA	SCT	SCT	SCT	SCT	SCT	FWS	FWS
25	MARATHWADA	ISOL	ISOL	ISOL	SCT	SCT	SCT	SCT
26	VIDARBHA	FWS	SCT	SCT	SCT	FWS	WS	WS
27	CHATTISGARH	FWS	FWS	FWS	WS	WS	WS	FWS
28	COASTAL ANDHRA PRADESH	ISOL	ISOL	SCT	SCT	FWS	FWS	FWS
29	TELANGANA	ISOL	ISOL	ISOL	SCT	SCT	SCT	SCT
30	RAYALASEEMA	ISOL	ISOL	ISOL	SCT	SCT	FWS	FWS
31	TAMILNADU & PUDUCHERRY	SCT	SCT	SCT	SCT	ISOL	ISOL	ISOL
32	COSTAL KARNATAKA	SCT	SCT	SCT	SCT	SCT	SCT	SCT
33	NORTH INTERIOR KARNATAKA	ISOL	ISOL	ISOL	SCT	SCT	SCT	SCT
34	SOUTH INTERIOR KARNATAKA	SCT	SCT	SCT	SCT	SCT	SCT	SCT
35	KERALA	SCT	SCT	FWS	FWS	SCT	SCT	SCT
36	LAKSHDWEEP	SCT	SCT	SCT	SCT	SCT	SCT	SCT

Legend	Category	%Stations
WS	Widespread/Most Places	76-100
FWS	Fairly Widespread/Many Places	51-75
SCT	Scattered/ A Few Places	26-50
ISOL	Isolated Places	1-25
DRY	No Rain	0

*Red color warning does not mean "Red Alert" Red color warning means "Take Action"

Forecast and warning for any day is valid from 0830 hours IST of day till 0830 hours IST of next day

For more details kindly visit <https://mausam.imd.gov.in> or contact 011-2434-4599

(Service to the nation since 1875)

Fig. 1: Maximum Temperatures Dated 2025-09-07

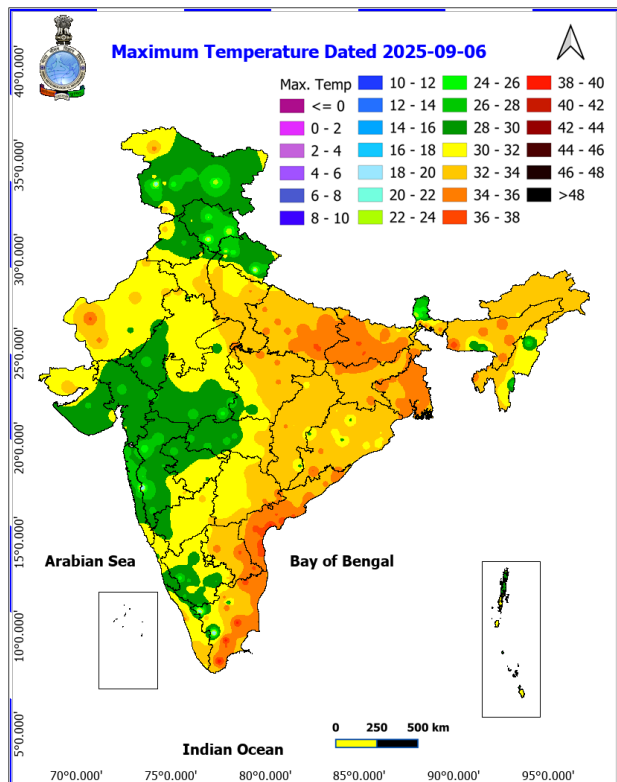


Fig. 2: Departure of Maximum Temp. Dated 2025-09-07

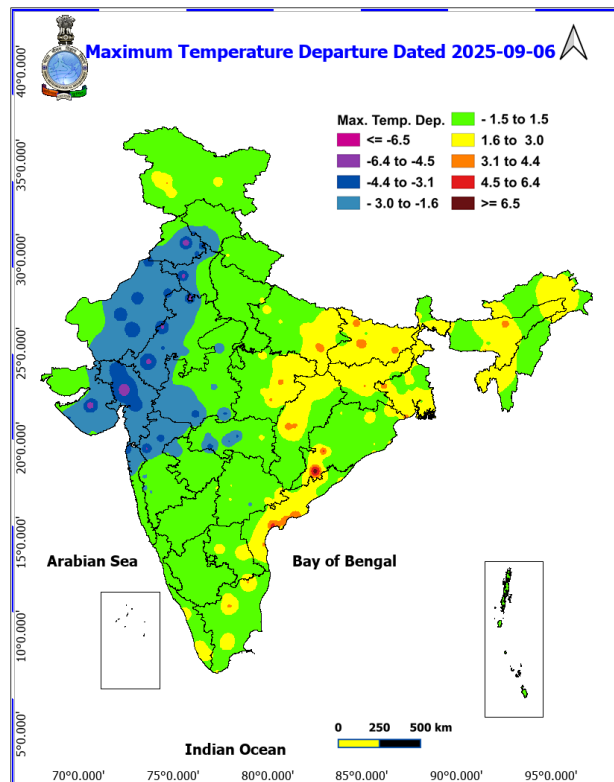


Fig. 3: Minimum Temperatures Dated 2025-09-07

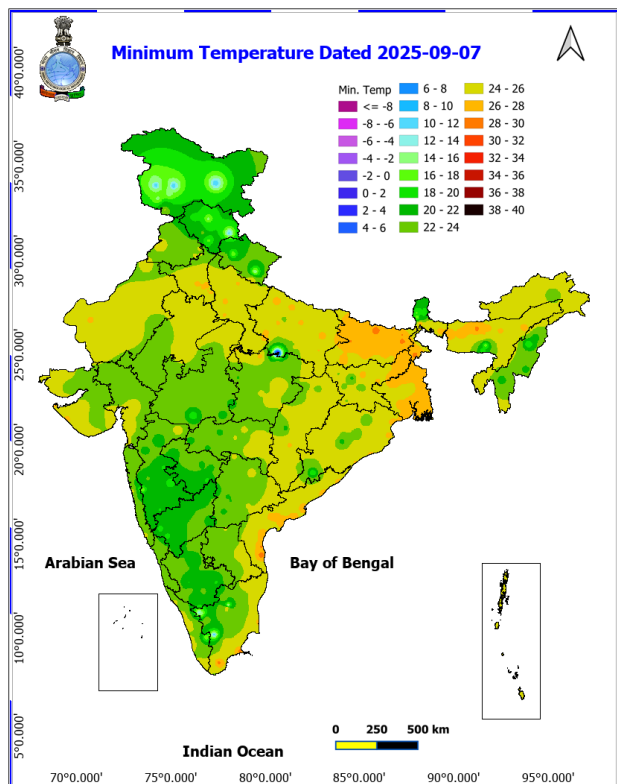
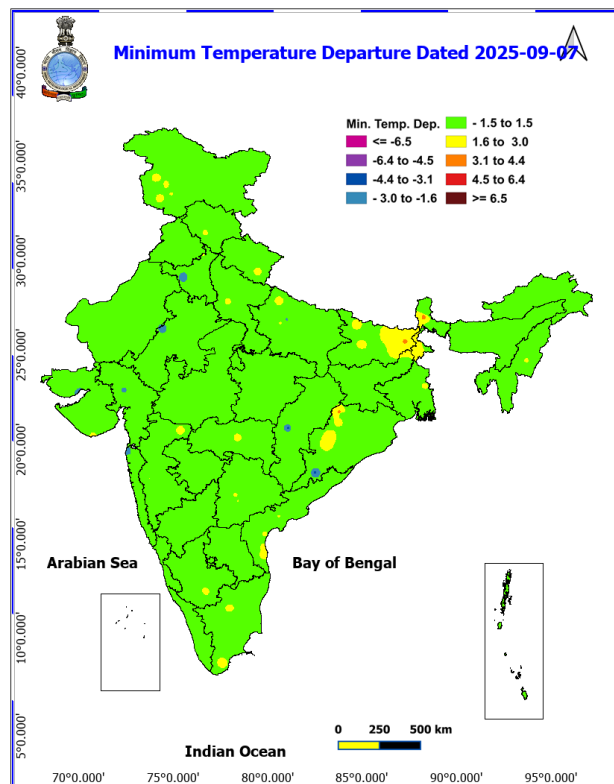
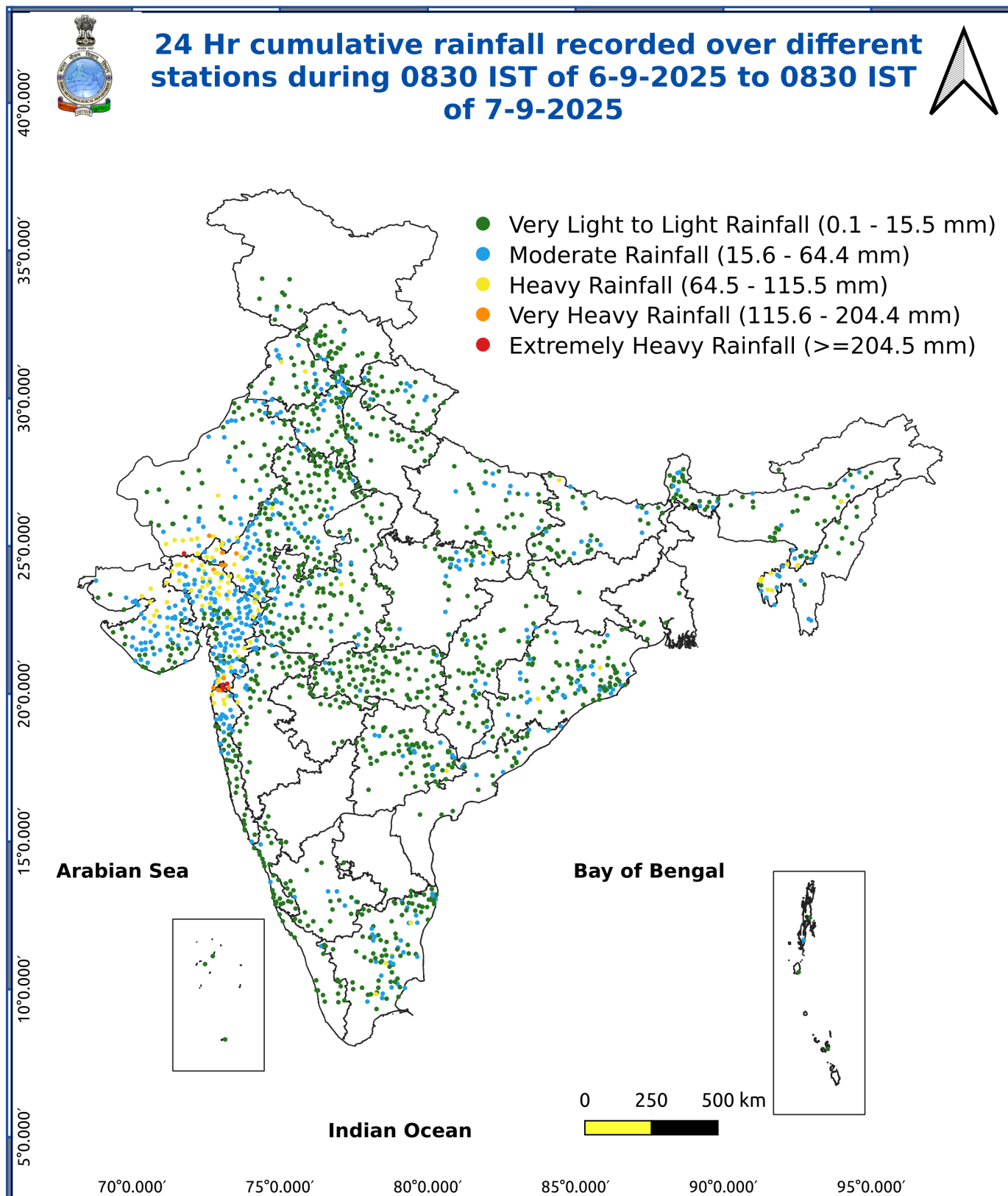


Fig. 4: Departure of Minimum Temp. Dated 2025-09-07





*Red color warning does not mean "Red Alert" Red color warning means "Take Action"

Forecast and warning for any day is valid from 0830 hours IST of day till 0830 hours IST of next day

For more details kindly visit <https://mausam.imd.gov.in> or contact 011-2434-4599

(Service to the nation since 1875)

Impact & Action Suggested due to

- **Heavy to very heavy rainfall at a few places (7-20cm) with isolated extremely heavy falls (≥ 21 cm)** over south Gujarat region on 07th September and exceptionally heavy falls (≥ 30 cm) and isolated heavy to very heavy rainfall very likely over Gujarat state on 08th September, 2025.
- **Heavy to very heavy rainfall at isolated places (7-20cm)** over Rajasthan till 08th September with **isolated extremely heavy falls (≥ 21 cm)** over Rajasthan on today, the 07th September, 2025.
- **Very heavy rainfall** over Konkan on 07th; Odisha on 11th & 12th; Assam & Meghalaya, Arunachal Pradesh during 11th-13th and Nagaland, Manipur, Mizoram & Tripura on 12th & 13th September.

Impact Expected

- Localized Flooding of roads, water logging in low lying areas and closure of underpasses mainly in urban areas of the above region.
- Occasional reduction in visibility due to heavy rainfall.
- Disruption of traffic in major cities due to water logging in roads leading to increased travel time.
- Minor damage to kutcha roads.
- Possibilities of damage to vulnerable structure.
- Localized Landslides/Mudslides/landslips/mudslips/landsinks/mudsinks.
- Damage to horticulture and standing crops in some areas due to inundation.
- It may lead to riverine flooding in some river catchments (for riverine flooding please visit Web page of CWC).
- **Action Suggested**
- Check for traffic congestion on your route before leaving for your destination.
- Follow any traffic advisories that are issued in this regard.
- Avoid going to areas that face the water logging problems often.
- Avoid staying in vulnerable structure.

Agromet advisories for various parts of the country

Inputs for Press Release

Agromet advisories for likely impact of Heavy / Heavy to Very Heavy / Extremely Heavy Rainfall

- In **Gujarat**, drain out excess rain water from fields of rice, sugarcane, okra, tuber crops and vegetables in **South Gujarat Heavy Rainfall Zone**; castor, cotton, groundnut, pearl millet, sesame, maize and vegetables in **North Gujarat Zone**; rice, pearl millet, pigeon pea, cotton, soybean, maize and castor in **Middle Gujarat Zone**; rice, cotton, pigeon pea and fruit orchards (banana and mango) in **South Gujarat Zone**; groundnut, cotton and soybean in **North Sourashtra Zone**; *kharif* groundnut, cotton, soybean, black gram and sesame in **North West Zone**; cotton, green gram, black gram, pigeon pea, pearl millet and vegetables in **Bhal and Coastal Zone** and groundnut, cotton, soybean, black gram, green gram, sesame and pigeon pea in **South Sourashtra Zone**.
- In **Rajasthan**, make proper drainage arrangements in fields of green gram, cluster bean, moth bean and castor in **Arid Western Plain Zone**; cotton, maize, soybean, groundnut and pulses in **Sub Humid Southern Plain and Aravali Hill Zone** and soybean, cotton, maize and vegetables in **Southern Humid Plain Zone**.
- In **Maharashtra**, make arrangements to drain out excess water from fields of rice, finger millet, turmeric, groundnut, vegetables and fruit orchards in **Konkan** and rice, soybean, cotton, vegetable fields and fruit orchards in **ghat areas of Madhya Maharashtra**.
- In **Punjab**, make arrangements to drain out excess water from fields of cotton, maize and vegetables in **Central Plain Zone**.

Livestock / Fishery

- Keep the animals inside the shed during heavy rainfall and provide them balanced feed.
- Store feed and fodder in a safe place to prevent spoilage.

***Red color warning does not mean "Red Alert" Red color warning means "Take Action"**

Forecast and warning for any day is valid from 0830 hours IST of day till 0830 hours IST of next day

For more details kindly visit <https://mausam.imd.gov.in> or contact 011-2434-4599

(Service to the nation since 1875)

- Construct an outlet with proper netting around the ponds to drain out excess water, thereby preventing fish from escaping in case of overflow.

Agromet advisories for likely impact of Thunderstorm / Gusty Winds / Squally Winds

(Based on the IBF and advisories issued by different AMFUs)

- Provide mechanical support to horticultural crops and staking or support to vegetables and young fruit plants / fruit-bearing plants to avoid lodging due to strong winds.

LEGENDS

- 1 अंडमान और निकोबार द्वीप समुह
- 2 अरुणाचल प्रदेश
- 3 असम और मेघालय
- 4 नागालैंड मनीपुर मीजोरम और त्रिपुरा
- 5 उप हिमालय पश्चिम बंगाल एवं सिक्किम
- 6 पश्चिम बंगाल
- 7 ओडिसा
- 8 झारखंड
- 9 बिहार
- 10 पूर्वी उत्तर प्रदेश
- 11 पश्चिम उत्तर प्रदेश
- 12 उत्तराखंड
- 13 हरियाणा चंडीगढ़ एवं दिल्ली
- 14 पंजाब
- 15 हिमाचल प्रदेश
- 16 जम्मू एवं कश्मीर एवं लद्दाख
- 17 पश्चिम राजस्थान
- 18 पूर्वी राजस्थान
- 19 पश्चिम मध्य प्रदेश
- 20 पूर्वी मध्य प्रदेश
- 21 गुजरात क्षेत्र
- 22 सौराष्ट्र एवं कच्छ
- 23 कोंकण एवं गोवा
- 24 मध्य महाराष्ट्र
- 25 मराठावाड़ा
- 26 विदर्भ
- 27 छत्तीसगढ़
- 28 तटीय आंध्र प्रदेश एवं यनम
- 29 तेलंगाना
- 30 रायलसीमा
- 31 तमिलनाडु, पुदुचेरी एवं कराईकल
- 32 तटिय कर्नाटक
- 33 आंतरिक उत्तरी कर्नाटक
- 34 आंतरिक दक्षिणी कर्नाटक
- 35 केरल एवं माहे
- 36 लक्षद्वीप



1. Andaman & Nicobar Islands
2. Arunachal Pradesh
3. Assam & Meghalaya
4. Nagaland, Manipur, Mizoram & Tripura
5. Sub-Himalayan West Bengal & Sikkim
6. Gangetic West Bengal
7. Orissa
8. Jharkhand
9. Bihar
10. East Uttar Pradesh
11. West Uttar Pradesh
12. Uttarakhand
13. Haryana, Chd & Delhi
14. Punjab
15. Himachal Pradesh
16. Jammu & Kashmir and Ladakh
17. West Rajasthan
18. East Rajasthan
19. West Madhya Pradesh
20. East Madhya Pradesh
21. Gujarat
22. Saurashtra
23. Konkan & Goa
24. Madhya Maharashtra
25. Marathawada
26. Vidharbha
27. Chhattisgarh
28. Coastal Andhra Pradesh & Yanam
29. Telangana
30. Rayalaseema
31. Tamilnadu, Puducherry & Karaikal
32. Coastal Karnataka
33. North Interior Karnataka
34. South Interior Karnataka
35. Kerala & Mahe
36. Lakshadweep

SPATIAL DISTRIBUTION (% of Stations reporting)


% Stations	Category	% Stations	Category
76-100	Widespread (WS/Most Places)	26-50	Scattered (SCT/ A Few Places)
51-75	Fairly Widespread (FWS/ Many Places)	1-25	Isolated (ISOL)


Subdivision Colour


- NO WARNING
- WATCH (BE UPDATED)
- ALERT (BE PREPARED TO TAKE ACTION)
- WARNING (TAKE ACTION)


Probabilistic Forecast


Terms	Probability of Occurrence (%)
Unlikely	< 25
Likely	25 - 50
Very Likely	50 - 75
Most Likely	> 75


-  Heavy Rain


 Thunderstorm & Lightning


 Strong surface winds


 Cold Wave


 Hot & Humid


 Very Heavy Rain


 Hailstorm

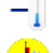
 Heat Wave


 Cold Day


 Extremely Heavy Rain


 Dust Storm


 Hot Day

 Ground Frost

 Heavy Snow

 Dust Raising Winds

 Warm Night

 Fog

*Red color warning does not mean "Red Alert" Red color warning means "Take Action"

Forecast and warning for any day is valid from 0830 hours IST of day till 0830 hours IST of next day

For more details kindly visit <https://mausam.imd.gov.in> or contact 011-2434-4599

(Service to the nation since 1875)

LEGENDS

WARNING

WARNING (TAKE ACTION)
ALERT (BE PREPARED)
WATCH (BE UPDATED)
NO WARNING (NO ACTION)

Probabilistic Forecast

Terms	Probability of Occurrence (%)
Unlikely	< 25
Likely	25 - 50
Very Likely	50 - 75
Most Likely	> 75



Heavy: 64.5 to 115.5 mm/cm *
Very Heavy: 115.6 to 204.4 mm/cm *
Extremely Heavy: > 204.4 mm/cm *



When maximum temperature of a station reaches $\geq 40^{\circ}\text{C}$ for plains and $\geq 30^{\circ}\text{C}$ for hilly regions
(a) Based on Departure from normal

Heat Wave: Maximum Temperature Departure from normal 4.5°C to 6.4°C .
Severe Heat Wave: Maximum Temperature Departure from normal $\geq 6.5^{\circ}\text{C}$

(b). Based on Actual maximum temperature

Heat Wave: When actual maximum temperature $\geq 45^{\circ}\text{C}$.
Severe Heat Wave: When actual maximum temperature $\geq 47^{\circ}\text{C}$

(c). Criteria for heat wave for coastal stations

When maximum temperature departure is $> 4.5^{\circ}\text{C}$ from normal. Heat Wave may be described provided maximum temperature $\geq 37^{\circ}\text{C}$



When maximum temperature remains 40°C

Warm Night: When minimum temperature departure 4.5°C to 6.4°C .
Severe Warm Night: When minimum temperature departure $> 6.4^{\circ}\text{C}$.



When minimum temperature of a station $\leq 10^{\circ}\text{C}$ for plains and $\leq 0^{\circ}\text{C}$ for hilly regions.

(a). Based on departure

Cold Wave: Minimum Temperature Departure from normal -4.5°C to -6.4°C .
Severe Cold Wave: Minimum Temperature Departure from normal $\leq -6.5^{\circ}\text{C}$

(b) Based on actual Minimum Temperature (for Plains only)

Cold Wave: When Minimum Temperature is $\leq 4.0^{\circ}\text{C}$
Severe Cold Wave: When Minimum Temperature is $\leq 2.0^{\circ}\text{C}$

(c) For Coastal Stations

When Minimum Temperature departure is $\leq -4.5^{\circ}\text{C}$ & actual Minimum Temperature is $\leq 15^{\circ}\text{C}$



When minimum temperature of a station $\leq 10^{\circ}\text{C}$ for plains and $\leq 0^{\circ}\text{C}$ for hilly regions
Based on departure

Cold Day: Maximum Temperature Departure from normal -4.5°C to -6.4°C .
Severe Cold Day: Maximum Temperature Departure from normal $\leq -6.5^{\circ}\text{C}$



Phenomenon of small droplets suspended in air and the horizontal visibility $< 1\text{km}$

Moderate Fog: When the visibility between 500-200 metres
Dense Fog: when the visibility between 50-200 metres
Very Dense Fog: when the visibility < 50 metres



Sudden electrical discharges manifested by a flash of light (Lightning) and a sharp rumbling sound (thunder)



An ensemble of particles of dust or sand energetically lifted to great heights by a strong and turbulent wind.



Ice deposits on ground

Air temperature $\leq 4^{\circ}\text{C}$ (over Plains)



A strong wind that rises suddenly, lasts for at least 1 minute.

Moderate: Wind speed 52-61 kmph
Severe: Wind speed 62-87 kmph
Very Severe: Wind speed > 87 kmph



Effect of various waves in the sea over specific area

Rough to very rough: Wind speed 41-62 kmph (22-33 knots) & Wave height 2.5-6 metre
High to very high: Wind speed 63-117 kmph (34-63 knots) & Wave height 6-14 metre
Phenomenal: Wind speed > 117 kmph (> 63 knots) & Wave height > 14 metre



Cyclonic Storm: Wind speed 62-87 kmph (34-47 knots)

Severe Cyclonic Storm: Wind speed 88-117 kmph (48-63 knots)

Very Severe Cyclonic Storm: Wind speed 118-165 kmph (64-89 knots)

Extremely Severe Cyclonic Storm: Wind speed 166-220 kmph (90-119 knots)

Super Cyclone Storm: Wind speed > 220 kmph (> 119 knots)

*Red color warning does not mean "Red Alert" Red color warning means "Take Action"

Forecast and warning for any day is valid from 0830 hours IST of day till 0830 hours IST of next day

For more details kindly visit <https://mausam.imd.gov.in> or contact 011-2434-4599

(Service to the nation since 1875)