

Saturday, May 31, 2025  
Time of Issue: 1345 hours IST  
(MID-DAY)

## ALL INDIA WEATHER SUMMARY AND FORECAST BULLETIN

### Significant Weather Features:

#### Weather Systems, Forecast and Warnings

- ❖ Yesterday's **Depression** over Bangladesh moved north-northeast wards and weakened into a **Well marked low pressure** area over Meghalaya & neighbourhood at 1730 hrs IST of 30th May and further weakened into a **Low pressure** area over northeast Assam & neighbourhood at 0530 hrs IST of today **and it became less marked at 0830 hrs IST of today**, the 31st May, 2025. However, the associated cyclonic circulation lies over Arunachal Pradesh in lower tropospheric levels.
- ❖ The Western disturbance now seen as cyclonic circulation over north Pakistan & adjoining Jammu & Kashmir between lower & middle tropospheric levels.
- ❖ The upper air cyclonic circulation over central Pakistan and a trough runs from this cyclonic circulation to Northwest Uttar Pradesh across Punjab, Haryana in lower tropospheric levels.
- ❖ A trough runs from northeast Uttar Pradesh to east Vidarbha in lower tropospheric levels.
- ❖ Under the influence of these systems, the following weather is likely:

#### Northeast India:

- ❖ Light/moderate rainfall at most/many places **with isolated heavy falls** likely to continue over Northeast India during next 7 days. Isolated **very heavy rainfall** is very likely over Arunachal Pradesh on 31st May; Assam & Meghalaya on 01st June and Nagaland, Manipur, Mizoram & Tripura on 31st May & 01st June.
- ❖ Light/moderate rainfall at most places **with isolated heavy to very heavy falls on 31st May and isolated heavy falls on 01st June** likely to continue over Sub-Himalayan West Bengal & Sikkim.

#### South Peninsular India:

- ❖ Light/moderate rainfall at many places with isolated heavy rainfall accompanied with **thunderstorm, lightning & gusty winds speed reaching 40-50 kmph over Kerala & Mahe, Karnataka during 31st May-04th June.**
- ❖ Light/moderate rainfall at some places with isolated heavy rainfall accompanied with **thunderstorm, lightning & gusty winds speed reaching 40-50 kmph** over Coastal Andhra Pradesh on 31st May; South Interior Karnataka during 31st May-02nd June.

#### Northwest India:

- ❖ Light/moderate rainfall at many/some places accompanied with **thunderstorm, lightning & gusty winds speed reaching 40-50 kmph** likely over likely over Jammu-Kashmir-Ladakh-Gilgit-Baltistan-Muzaffarabad, Himachal Pradesh, Uttarakhand, Punjab, Haryana Chandigarh & Delhi; light/moderate rainfall at some/isolated places over Uttar Pradesh, Rajasthan during 31st May-04th June.
- ❖ **Thundersquall wind speed reaching 50-60 kmph gusting to 70 kmph** likely over Jammu-Kashmir on 31st May; Himachal Pradesh during 31st May-02nd June and Rajasthan during 02nd-04th June.
- ❖ **Isolated heavy rainfall** also likely over Jammu-Kashmir-Ladakh-Gilgit-Baltistan-Muzaffarabad on 31st, Himachal Pradesh, Uttarakhand on 31st May & 01st June.
- ❖ **Dust storm** also very likely at isolated places over West Rajasthan during 02nd-04th June.

#### West India:

- ❖ Light/moderate rainfall at many places likely over Konkan & Goa with **isolated heavy rainfall** likely over Konkan & Goa during 01st-03rd June.

#### East & Central India:

- ❖ **Isolated to scattered** light/moderate rainfall accompanied with **thunderstorm, lightning & gusty winds speed reaching 40-50 kmph** likely over Vidarbha, Chhattisgarh, Gangetic West Bengal, Jharkhand, Odisha, Madhya Pradesh, Bihar, Madhya Pradesh on 31st May & 01st June.
- ❖ **Isolated heavy rainfall** likely over Bihar, Jharkhand and Odisha on 31st May.

#### Maximum Temperature Forecast:

- ❖ Rise by about 2°C in maximum temperatures over likely over Northwest India during next 24 hours; Fall by about 2-3°C during next 3 days and rise by 2-3°C thereafter.
  - ❖ No significant change in maximum temperatures likely over East India during next 24 hours; gradual rise by 3-5°C in maximum temperatures during next 4 days and no large change thereafter.
  - ❖ Gradual rise by 2-3°C in maximum temperatures over Madhya Pradesh during next 5 days and no large change thereafter.
- No significant change in maximum temperatures likely over rest parts of the country.

\* Red colour warning does not mean "Red Alert", Red colour warning means "Take Action".

Forecast and Warning for any day is valid from 0830 hours IST of day till 0830 hours IST of next day.

For more details, kindly visit <https://mausam.imd.gov.in> or contact: 011-2434-4599

(Service to the Nation since 1875)

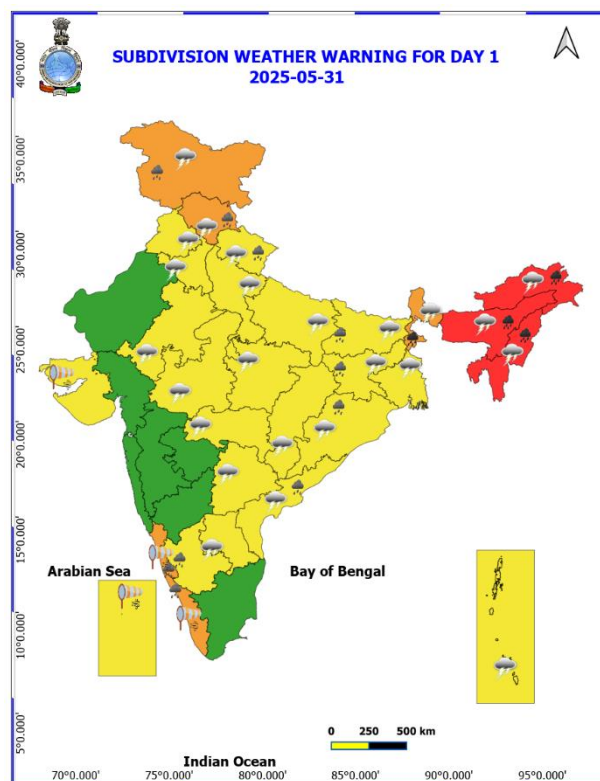
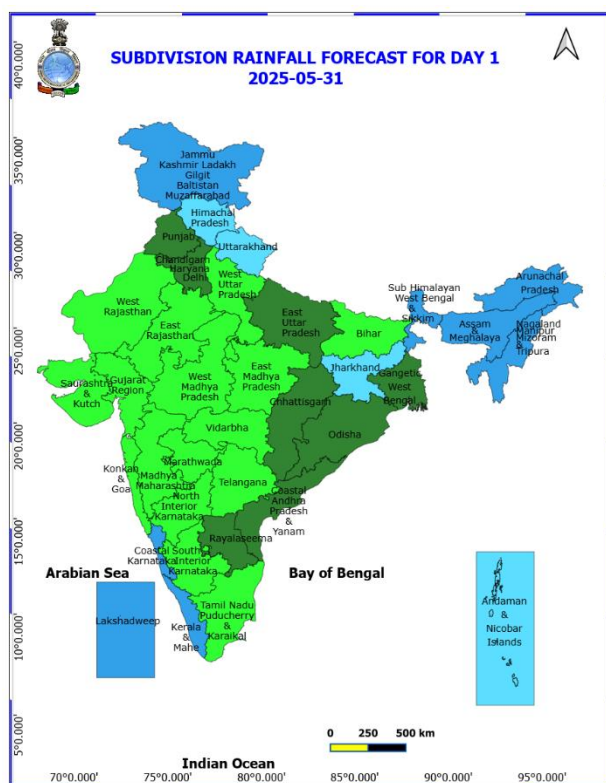
## Main Weather Observations:

- ❖ **Rainfall distribution** (from 0830 hours IST of yesterday to 0830 hours IST of today): **at most places** over Arunachal Pradesh, Assam & Meghalaya, Nagaland, Manipur, Mizoram & Tripura, Sub Himalayan West Bengal & Sikkim, Jammu-Kashmir/Ladakh-Gilgit-Baltistan-Muzaffarabad, Coastal Andhra Pradesh & Yanam, Coastal Karnataka, Kerala & Mahe and Lakshadweep; **at many places** over Odisha and Rayalaseema; **at a few places** over Gangetic West Bengal, Himachal Pradesh, Vidarbha, Chhattisgarh, Telangana, Tamil Nadu, Puducherry & Karaikal and South Interior Karnataka; **at isolated places** over Bihar, East Uttar Pradesh, West Uttar Pradesh, Uttarakhand, Haryana-Chandigarh-Delhi, Punjab, West Rajasthan, East Rajasthan, West Madhya Pradesh, East Madhya Pradesh, Gujarat Region, Konkan & Goa, Madhya Maharashtra, Marathwada and North Interior Karnataka; **Dry** over rest of the country.
- ❖ **Significant rainfall recorded(in cm)** (from 0830 hours IST of yesterday to 0830 hours IST of today): **Assam & Meghalaya**: Cherrapunji(rkm) (dist East Khasi Hills) 47; Cherrapunji (dist East Khasi Hills) 41; Mawsynram (dist East Khasi Hills) 40; Khliehriat (dist East Jaintia Hills) 30; Mawkyrwat (dist South West Khasi Hills) 29; Mawphlang (dist East Khasi Hills) 21; Chauldhowaghat (dist Lakhimpur) 19; **Coastal Karnataka**: Puttur HMS (dist Dakshina Kannada) 23; Uppinangadi (dist Dakshina Kannada) 22; Belthangadi (dist Dakshina Kannada) 20; Sulya (dist Dakshina Kannada) 19; **Sub Himalayan West Bengal & Sikkim**: Sevoke (dist Darjeeling), Buxaduar (dist Alipurduar), Hasimara (dist Alipurduar) 23 Each; Beech Tea Garden (dist Alipurduar) 21; Hilla T.e. (dist Jalpaiguri) 17; Chengmari/Diana (dist Jalpaiguri) 16; Banarhat High School (dist Jalpaiguri), Kurti T.e. (dist Jalpaiguri) 15 Each; Neora (dist Jalpaiguri), Ghatia T.e. (dist Jalpaiguri), Gurjonghora Tea Estate (dist Jalpaiguri), Soongachi T.e. (dist Jalpaiguri), Tra Nagrakata (dist Jalpaiguri), Dima Tea Estate (dist Alipurduar) 14 Each; Ghish (dist Jalpaiguri), Indong T.e. (dist Jalpaiguri), Jiti T.e. (dist Jalpaiguri), Bhutanghat (dist Alipurduar) 13 Each; **Nagaland, Manipur, Mizoram & Tripura**: Saiha (dist Saiha) 22; Senapati (dist Senapati) 15; Champai AWS (dist Champhai) 14; Lawngtlai (dist Lawngtlai) 12; **Arunachal Pradesh**: Tezu (dist Lohit), Bomdila AWS (dist West Kameng) 18 Each; Basar AWS (dist West Siang), Basar (dist West Siang) 16 Each; Yazali (dist Lower Subansiri) 15; Naharlagun (dist Papumpara), Tezu AWS (dist Lohit) 14 Each; Miao (dist Changlang), Ziro (dist Lower Subansiri), Hawaii (dist Anjaw) 13 Each; **Kerala & Mahe**: Muliya AWS (dist Kasargod) 17; Kudulu (dist Kasargod) 14; Panathur AWS (dist Kasargod) 12; **Odisha**: Nandahandi (dist Nawarangpur) 15; **South Interior Karnataka**: Bhagamandala (dist Kodagu) 13.
- ❖ **Heavy Rainfall observed** (from 0830 hours IST of yesterday to 0830 hours IST of today): **Extremely heavy rain** at isolated places over Assam & Meghalaya, Nagaland, Manipur, Mizoram & Tripura, Sub Himalayan West Bengal & Sikkim and Coastal Karnataka. **Heavy to very heavy rain** at a few places over Arunachal Pradesh and at isolated places over Assam & Meghalaya, Nagaland, Manipur, Mizoram & Tripura, Sub Himalayan West Bengal & Sikkim, Odisha, Coastal Karnataka, South Interior Karnataka and Kerala & Mahe. **Heavy rain** at a few places over Assam & Meghalaya and Sub Himalayan West Bengal & Sikkim and at isolated places over Chhattisgarh, Coastal Andhra Pradesh & Yanam and Rayalaseema.
- ❖ **Minimum Temperature Departures (as on 31-05-2025)**: **Minimum Temperature** are **markedly above normal (> 5.1°C)** at few places over East Madhya Pradesh and Gujarat Region; at isolated places over Assam & Meghalaya, Sub Himalayan West Bengal & Sikkim, Bihar, East Uttar Pradesh, West Uttar Pradesh, Punjab, Himachal Pradesh, Jammu-Kashmir/Ladakh-Gilgit-Baltistan-Muzaffarabad and Saurashtra & Kutch. **appreciably above normal (3.1°C to 5.0°C)** at few places over Andaman & Nicobar Islands and West Madhya Pradesh; at isolated places over Konkan & Goa. **above normal (1.6°C to 3.0°C)** at many places over Coastal Karnataka; at few places over Nagaland, Manipur, Mizoram & Tripura; at isolated places over Gangetic West Bengal, Haryana-Chandigarh-Delhi, Madhya Maharashtra and Tamil Nadu, Puducherry & Karaikal. **near normal (-1.5°C to 1.5°C)** at many places over Odisha, Coastal Andhra Pradesh & Yanam and Rayalaseema; at most places over Arunachal Pradesh, West Rajasthan, East Rajasthan, South Interior Karnataka and Lakshadweep; at few places over Jharkhand and North Interior Karnataka; at isolated places over Marathwada, Vidarbha, Chhattisgarh, Telangana and Kerala & Mahe. **The lowest minimum temperature** of 21.9°C was reported at Meerut (West Uttar Pradesh) over the Plains of India.
- ❖ **Maximum Temperature Departures (as on 30-05-2025)**: Maximum Temperatures were **appreciably above normal (3.1°C to 5.0°C)** at isolated places over Sub Himalayan West Bengal & Sikkim, West Uttar Pradesh, Himachal Pradesh, East Madhya Pradesh and Tamil Nadu, Puducherry & Karaikal; **above normal (1.6°C to 3.0°C)** at isolated places over Odisha, Bihar, East Uttar Pradesh, Gujarat Region and Saurashtra & Kutch and **near normal (-1.5°C to 1.5°C)** at many places over Gangetic West Bengal, Konkan & Goa and Coastal Andhra Pradesh & Yanam; at most places over Andaman & Nicobar Islands and West Rajasthan; at few places over Uttarakhand; at isolated places over Jharkhand, East Rajasthan and West Madhya Pradesh. Yesterday, **the highest maximum temperature of 43.6°C was reported at Jaisalmer (West Rajasthan).**

### Meteorological Analysis (Based on 0830 hours IST)

- ❖ The Northern Limit of Monsoon continues to pass through 17.0°N/55°E, 17.5°N/60°E, 18°N/65°E, 18.5°N/70°E, Mumbai, Ahilyanagar, Adilabad, Bhawanipatna, Puri, Sandhead Island, 23.5°N/89.5°E, Balurghat, 30°N/85°E.
- ❖ The **low pressure area** over northeast Assam & neighbourhood has become less marked. However, the associated cyclonic circulation now lies over Arunachal Pradesh & extends upto 3.1 km above mean sea level.
- ❖ The **Western disturbance** now seen as **cyclonic circulation** over north Pakistan & adjoining Jammu & Kashmir between 3.1 km & 5.8 km above mean sea level.
- ❖ The **upper air cyclonic circulation** over central Pakistan at 1.5 km above mean sea level persists.
- ❖ A **trough** runs from the above cyclonic circulation over central Pakistan to Northwest Uttar Pradesh across Punjab, Haryana at 1.5 km above mean sea level.
- ❖ The **upper air cyclonic circulation** over northwest Uttar Pradesh at 1.5 km above mean sea level has merged with the above trough.
- ❖ A **trough** runs from northeast Uttar Pradesh to east Vidarbha at 0.9 km above mean sea level.
- ❖ The **upper air cyclonic circulation** over central parts of Uttar Pradesh at 0.9 km above mean sea level has become less marked.
- ❖ The **upper air cyclonic circulation** over west Rajasthan between 1.5 km and 3.1 km above mean sea level has become less marked.
- ❖ The **upper air cyclonic circulation** over Punjab at 0.9 km above mean sea level has become less marked.

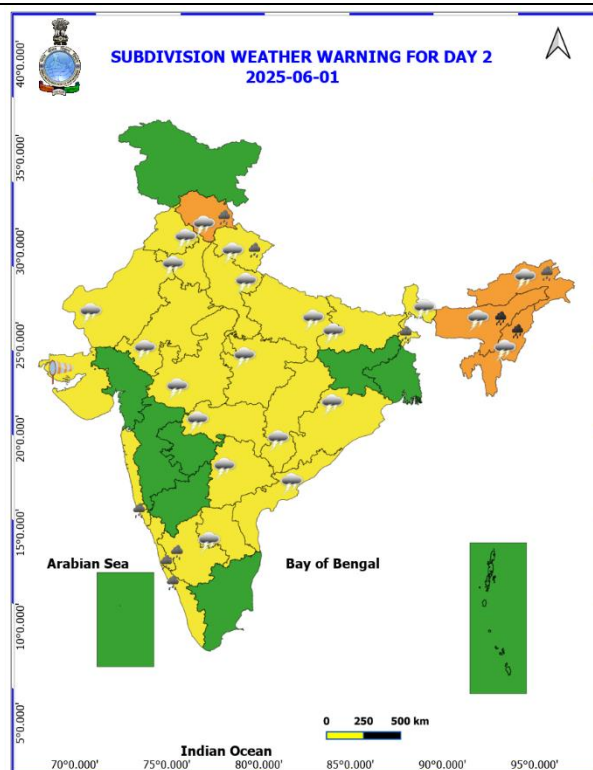
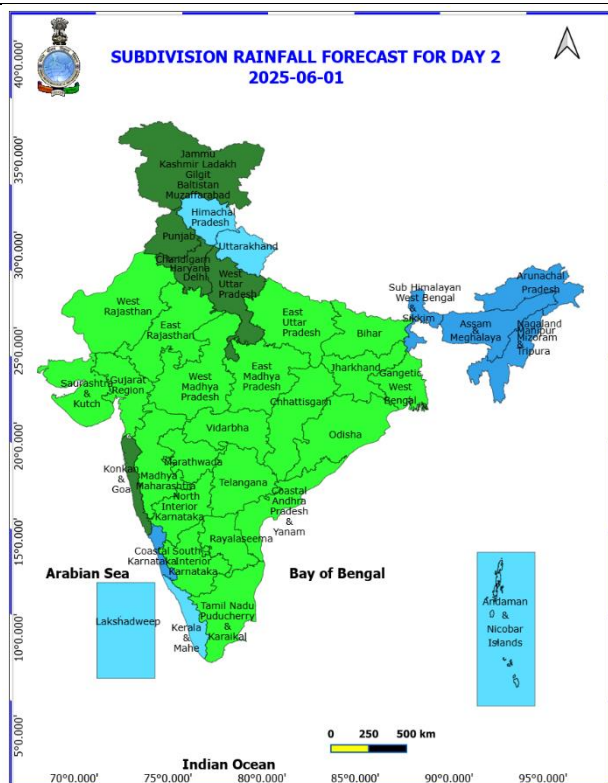
**Weather Forecast & Warnings for next 7 days (Upto 0830 hours IST of 07<sup>th</sup> June, 2025)**



**31 May (Day 1)**

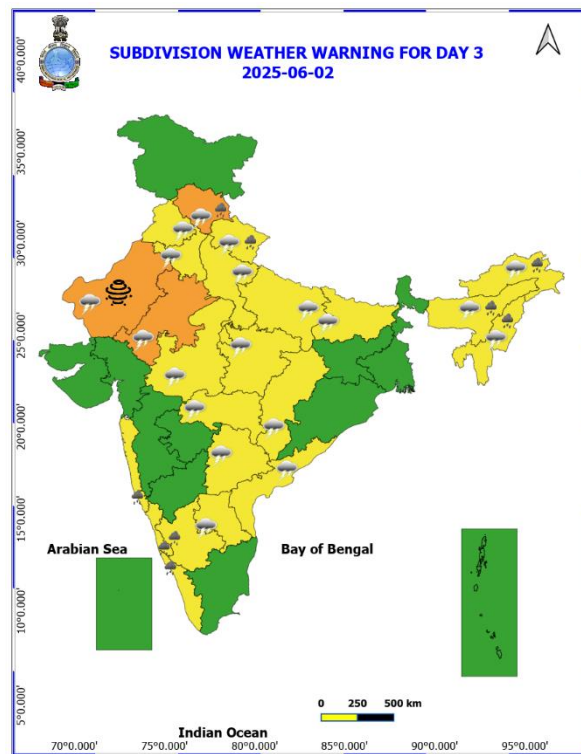
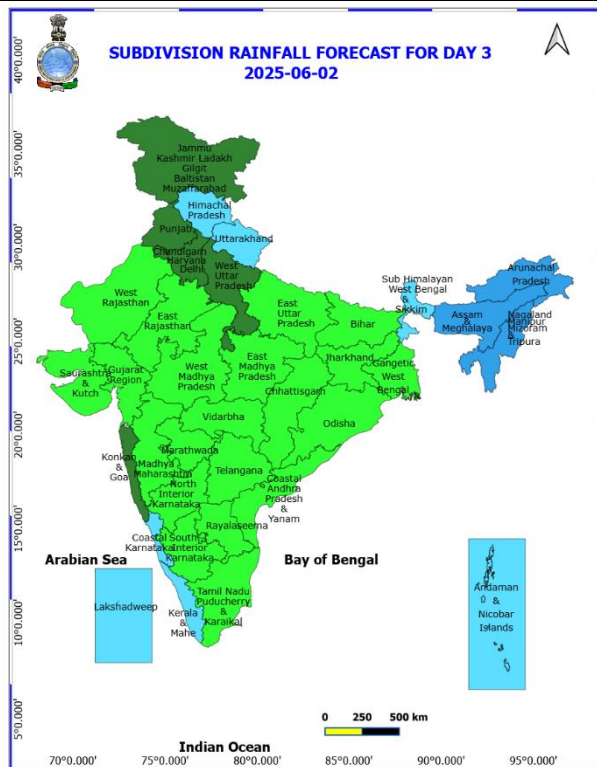
- ❖ **Heavy to Very Heavy Rainfall** very likely at isolated places over Arunachal Pradesh, Assam & Meghalaya, Nagaland, Manipur, Mizoram and Tripura and Sub Himalayan West Bengal & Sikkim.
- ❖ **Heavy Rainfall** very likely at isolated places over Bihar, Coastal Andhra Pradesh, Coastal Karnataka, Himachal Pradesh, Jammu-Kashmir-Ladakh-Gilgit-Baltistan-Muzaffarabad, Jharkhand, Kerala & Mahe, Odisha, South Interior Karnataka and Uttarakhand.
- ❖ **Thundersquall with wind speed reaching(50-60kmph)** very likely at isolated places over Himachal Pradesh and Jammu-Kashmir-Ladakh-Gilgit-Baltistan-Muzaffarabad.
- ❖ **Thunderstorm accompanied with lightning & gusty winds(40-50kmph)** very likely at isolated places over Andhra Pradesh, Chhattisgarh, East Rajasthan, Gangetic West Bengal, Haryana, Chandigarh & Delhi, Jharkhand, Madhya Pradesh, Odisha, Punjab, Uttar Pradesh and Uttarakhand.
- ❖ **Thunderstorm accompanied with lightning & gusty winds(30-40kmph)** very likely at isolated places over Andaman & Nicobar Islands, Arunachal Pradesh, Assam & Meghalaya, Bihar, Nagaland, Manipur, Mizoram and Tripura, Telangana and Vidarbha.
- ❖ **Thunderstorm accompanied with Lightning** very likely at isolated places over Sub Himalayan West Bengal & Sikkim.
- ❖ **Strong Surface Winds** very likely at isolated places over Coastal Karnataka, Kerala & Mahe, Lakshadweep and Saurashtra & Kutch.
- ❖ **Squally wind with speed 45 kmph to 55 kmph gusting to 65 kmph** likely to prevail along and off Somalia coast, some parts of southwest Arabian Sea and adjoining parts of west central Arabian Sea, along and off Gujarat coast and adjoining northeast Arabian Sea. **Squally weather with wind speed 35 kmph to 45 kmph gusting to 55 kmph** prevailing over entire south Arabian Sea, southern parts of central Arabian Sea; along and off Kerala, Karnataka coasts, over Lakshadweep area, Maldives area, Comorin area, along and off Sri Lanka coast, off Tamil Nadu, Andhra Pradesh, coasts, over most parts of south, central Bay of Bengal & many parts of northeast Bay of Bengal and adjoining parts of northwest Bay of Bengal. **Squally weather with wind speed 45 kmph to 55 kmph gusting to 65 kmph** prevailing over Gulf of Mannar and adjoining Comorin area, many parts of south and adjoining parts of central Bay of Bengal. Fisherman are not advised not to venture into the sea.





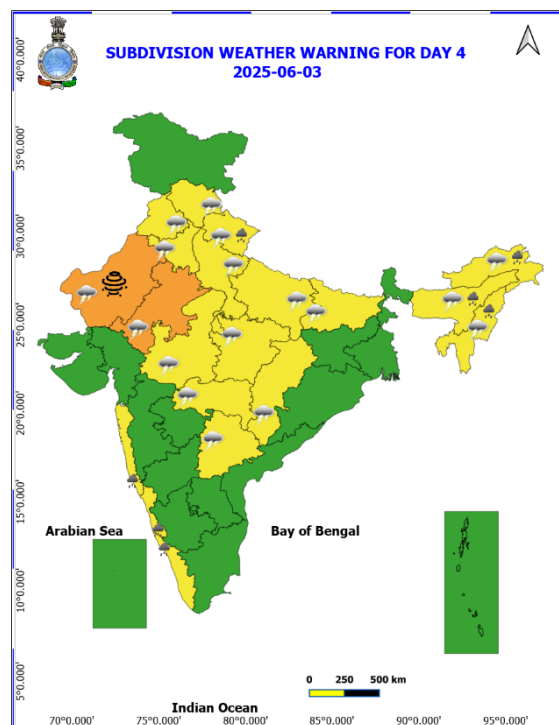
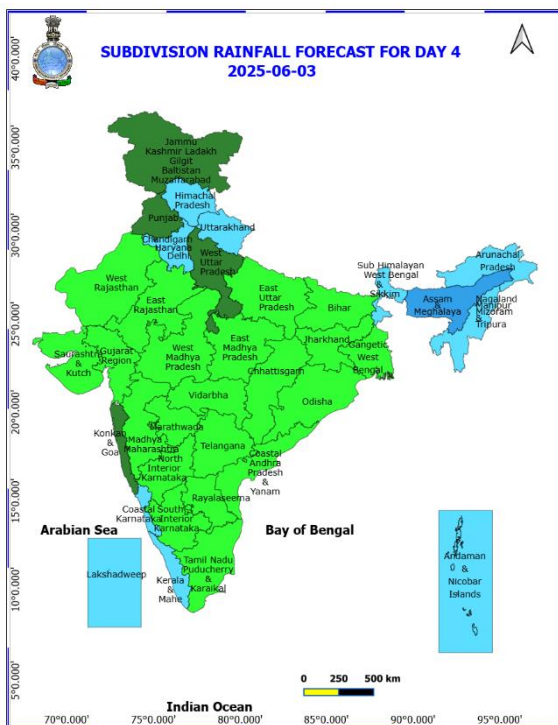
## 01<sup>st</sup> June (Day 2)

- ❖ **Heavy to Very Heavy Rainfall** very likely at isolated places over Assam & Meghalaya and Nagaland, Manipur, Mizoram and Tripura.
- ❖ **Heavy Rainfall** very likely at isolated places over Arunachal Pradesh, Coastal Karnataka, Himachal Pradesh, Kerala & Mahe, Konkan & Goa, South Interior Karnataka, Sub Himalayan West Bengal & Sikkim and Uttarakhand.
- ❖ **Thundersquall with wind speed reaching(50-60kmph)** very likely at isolated places over Himachal Pradesh.
- ❖ **Thunderstorm accompanied with lightning & gusty winds(40-50kmph)** very likely at isolated places over Andhra Pradesh, Chhattisgarh, Haryana, Chandigarh & Delhi, Madhya Pradesh, Punjab, Rajasthan and Uttar Pradesh.
- ❖ **Thunderstorm accompanied with lightning & gusty winds(30-40kmph)** very likely at isolated places over Assam & Meghalaya, Bihar, Nagaland, Manipur, Mizoram and Tripura, Odisha, Telangana, Uttarakhand and Vidarbha.
- ❖ **Thunderstorm accompanied with Lightning** very likely at isolated places over Arunachal Pradesh and Sub Himalayan West Bengal & Sikkim.
- ❖ **Strong Surface Winds** very likely at isolated places over Saurashtra & Kutch.
- ❖ **Squally wind with speed 45 kmph to 55 kmph gusting to 65 kmph** likely to prevail along and off Somalia coast and some parts of southwest Arabian Sea & westcentral Arabian Sea, along and off Gujarat coast and adjoining northeast Arabian Sea. **Squally weather with wind speed 35 kmph to 45 kmph gusting to 55 kmph** prevailing over entire south Arabian Sea, many parts of central Arabian Sea; along and off Kerala, Karnataka coasts, over Lakshadweep area, Maldives area, Comorin area, along and off Sri Lanka coast, off Tamil Nadu, Andhra Pradesh, coasts, over most parts of south, central Bay of Bengal & southern parts of northeast Bay of Bengal. **Squally weather with wind speed 45 kmph to 55 kmph gusting to 65 kmph** prevailing over Gulf of Mannar and adjoining Comorin area. Fisherman are not advised not to venture into the sea.



## 02<sup>nd</sup> June (Day 3)

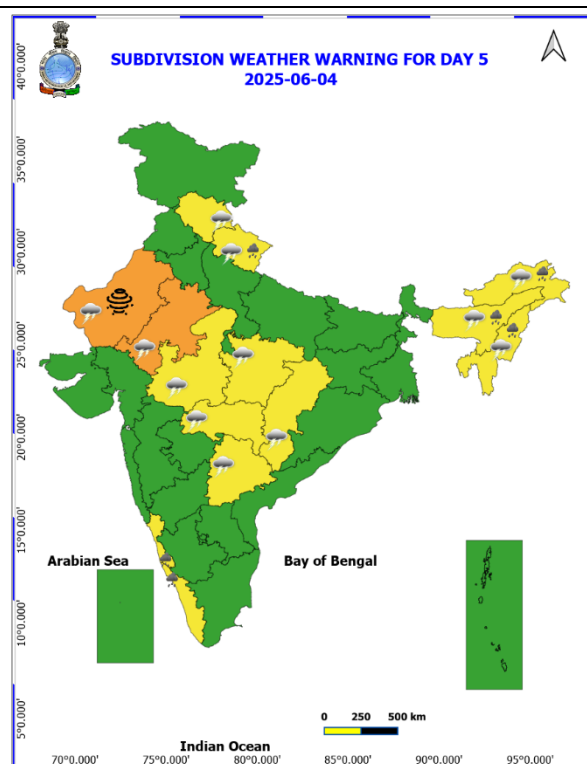
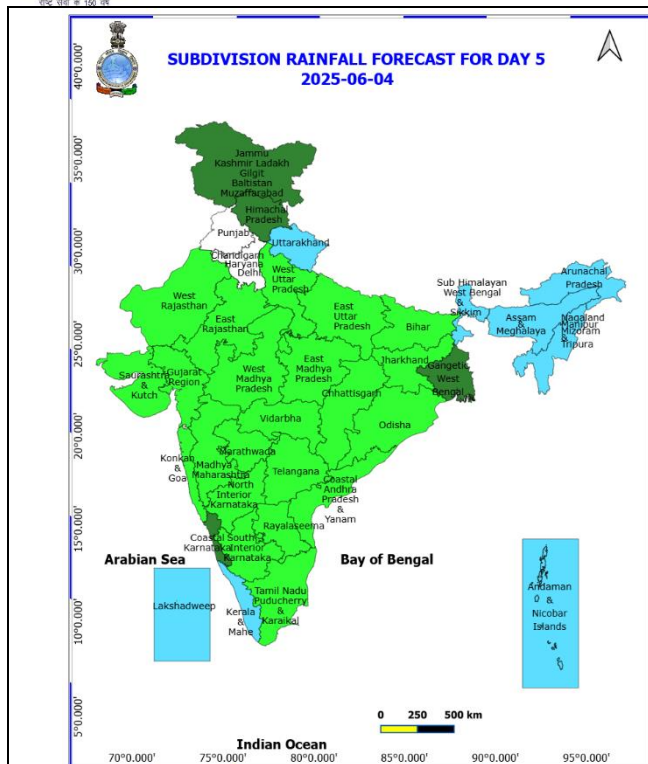
- ❖ **Heavy Rainfall** very likely at isolated places over Arunachal Pradesh, Assam & Meghalaya, Coastal Karnataka, Himachal Pradesh, Kerala & Mahe, Konkan & Goa, Nagaland, Manipur, Mizoram and Tripura, South Interior Karnataka and Uttarakhand.
- ❖ **Thundersquall with wind speed reaching(50-60kmph)** very likely at isolated places over Himachal Pradesh and Rajasthan.
- ❖ **Thunderstorm accompanied with lightning & gusty winds(40-50kmph)** very likely at isolated places over Chhattisgarh, Haryana, Chandigarh & Delhi, Madhya Pradesh, Punjab, Uttar Pradesh and Vidarbha.
- ❖ **Thunderstorm accompanied with lightning & gusty winds(30-40kmph)** very likely at isolated places over Andhra Pradesh, Bihar, Telangana and Uttarakhand.
- ❖ **Thunderstorm accompanied with Lightning** very likely at isolated places over Arunachal Pradesh, Assam & Meghalaya and Nagaland, Manipur, Mizoram and Tripura.
- ❖ **Dust Storm** very likely at isolated places over West Rajasthan.
- ❖ **Squally wind with speed 45 kmph to 55 kmph gusting to 65 kmph** likely to prevail along and off Somalia coast and some parts of southwest Arabian Sea & westcentral Arabian Sea, off north Gujarat coast and some parts of northeast Arabian Sea. **Squally weather with wind speed 35 kmph to 45 kmph gusting to 55 kmph** prevailing over many parts of southwest and westcentral Arabian Sea, some parts of eastcentral and southeast Arabian Sea, Gulf of Mannar and adjoining Comorin area, over central parts of Bay of Bengal. Fisherman are not advised not to venture into the sea.



### 03<sup>rd</sup> June (Day 4)

- ❖ **Heavy Rainfall** likely at isolated places over Arunachal Pradesh, Assam & Meghalaya, Coastal Karnataka, Kerala & Mahe, Konkan & Goa, Nagaland, Manipur, Mizoram and Tripura and Uttarakhand.
- ❖ **Thundersquall with wind speed reaching(50-60kmph)** likely at isolated places over Rajasthan.
- ❖ **Thunderstorm accompanied with lightning & gusty winds(40-50kmph)** likely at isolated places over Chhattisgarh, Haryana, Chandigarh & Delhi, Himachal Pradesh, Madhya Pradesh, Punjab, Uttar Pradesh and Vidarbha.
- ❖ **Thunderstorm accompanied with lightning & gusty winds(30-40kmph)** likely at isolated places over Bihar, Telangana and Uttarakhand.
- ❖ **Thunderstorm accompanied with Lightning** likely at isolated places over Arunachal Pradesh, Assam & Meghalaya and Nagaland, Manipur, Mizoram and Tripura.
- ❖ **Dust Storm** likely at isolated places over West Rajasthan.
- ❖ **Squally wind with speed 45 kmph to 55 kmph gusting to 65 kmph** likely to prevail along and off Somalia coast and some parts of southwest Arabian Sea & westcentral Arabian Sea. **Squally weather with wind speed 35 kmph to 45 kmph gusting to 55 kmph** prevailing over many parts of southwest and westcentral Arabian Sea, some parts of eastcentral and southeast Arabian Sea, some southern parts of northeast Arabian Sea, Gulf of Mannar and adjoining Comorin area, over central parts of Bay of Bengal. Fishermen are not advised not to venture into the sea.

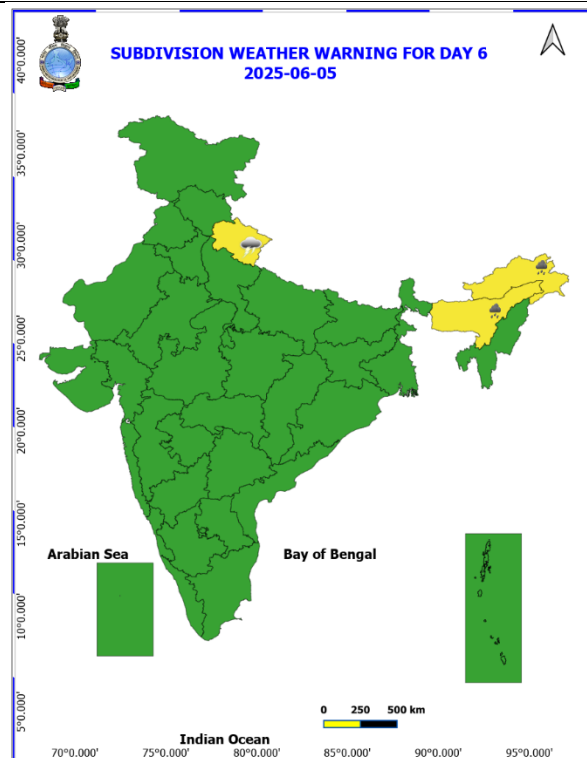
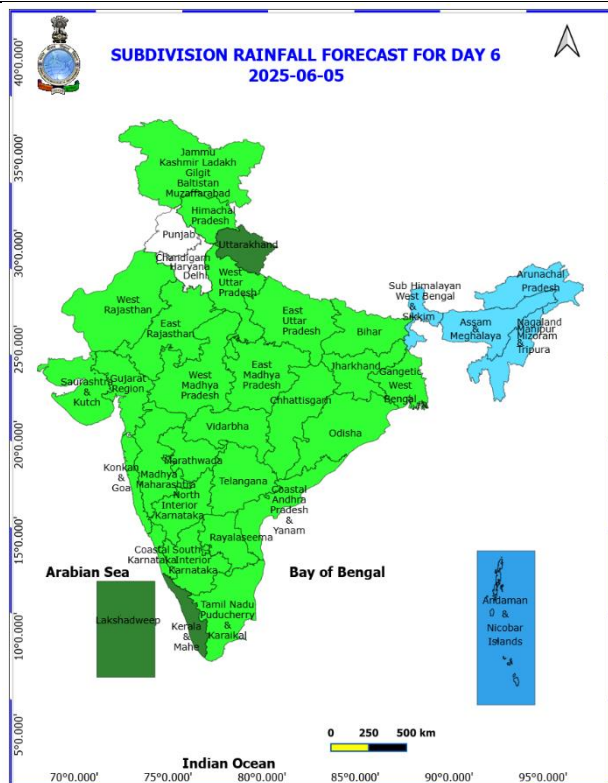




## 04<sup>th</sup> June (Day 5)

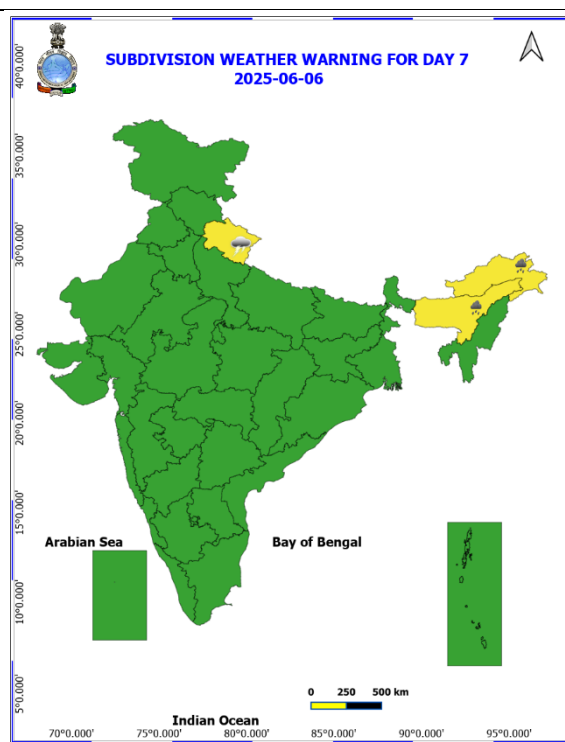
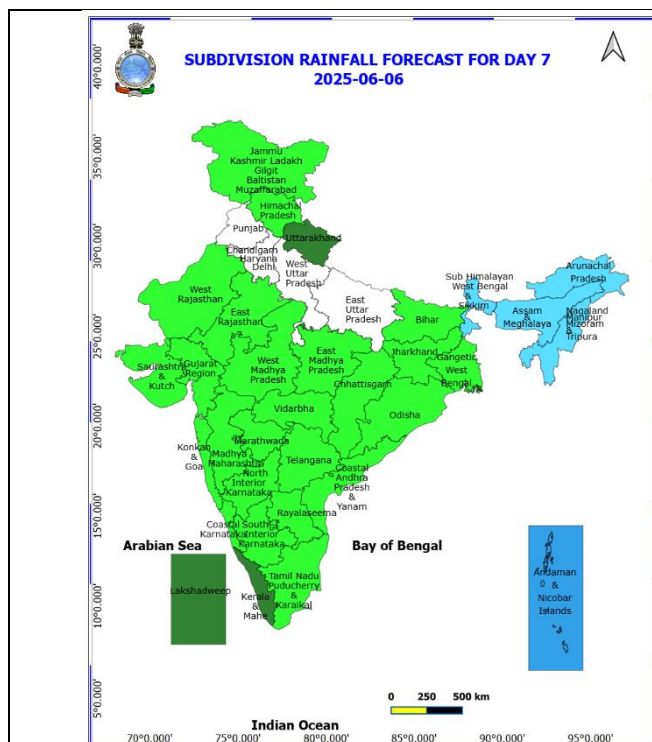
- ❖ **Heavy Rainfall** likely at isolated places over Arunachal Pradesh, Assam & Meghalaya, Coastal Karnataka, Kerala & Mahe, Nagaland, Manipur, Mizoram and Tripura and Uttarakhand.
- ❖ **Thundersquall with wind speed reaching(50-60kmph)** likely at isolated places over Rajasthan.
- ❖ **Thunderstorm accompanied with lightning & gusty winds(40-50kmph)** likely at isolated places over Chhattisgarh, Himachal Pradesh, Madhya Pradesh and Vidarbha.
- ❖ **Thunderstorm accompanied with lightning & gusty winds(30-40kmph)** likely at isolated places over Telangana and Uttarakhand.
- ❖ **Thunderstorm accompanied with Lightning** likely at isolated places over Arunachal Pradesh, Assam & Meghalaya and Nagaland, Manipur, Mizoram and Tripura.
- ❖ **Dust Storm** likely at isolated places over West Rajasthan.
- ❖ **Squally wind with speed 45 kmph to 55 kmph gusting to 65 kmph** likely to prevail along and off Somalia coast and some parts of southwest Arabian Sea & westcentral Arabian Sea. **Squally weather with wind speed 35 kmph to 45 kmph gusting to 55 kmph** prevailing over northern parts of southwest and westcentral Arabian Sea, some parts of eastcentral and few parts of southeast Arabian Sea, some southern parts of northeast Arabian Sea, Gulf of Mannar and adjoining Comorin area, over most parts of central Bay of Bengal and adjoining parts of north Bay of Bengal. Fisherman are not advised not to venture into the sea.





## 05<sup>th</sup> June (Day 6)

- ❖ **Heavy Rainfall** likely at isolated places over Arunachal Pradesh and Assam & Meghalaya.
- ❖ **Thunderstorm accompanied with lightning & gusty winds(30-40kmph)** likely at isolated places over Uttarakhand.



## 06<sup>th</sup> June (Day 7)

- ❖ **Heavy Rainfall** likely at isolated places over Arunachal Pradesh and Assam & Meghalaya.
- ❖ **Thunderstorm accompanied with lightning & gusty winds(30-40kmph)** likely at isolated places over Uttarakhand.

## Weather Outlook for subsequent 3 days (During 07<sup>th</sup> June- 09<sup>th</sup> June, 2025)

Action may be taken based on **ORANGE AND RED** COLOUR warnings.

- ❖ **Fairly widespread to widespread** rainfall activity likely over Northeast India, West Bengal & Sikkim, Andaman & Nicobar Islands, Lakshadweep, Konkan & Goa, Coastal Karnataka and Kerala & Mahe.
- ❖ **Isolated to scattered rainfall** likely over Jammu-Kashmir-Ladakh, Uttarakhand, Himachal Pradesh, Odisha, south Chhattisgarh adjoining Coastal Andhra Pradesh & Yanam.

- Vulnerable regions likely urban and hilly areas action may be initiated for heavy rainfall warning.
- As the lead period increases forecast accuracy decreases.

Fig. 1: Maximum Temperatures

Fig. 2: Departure of Maximum Temperatures

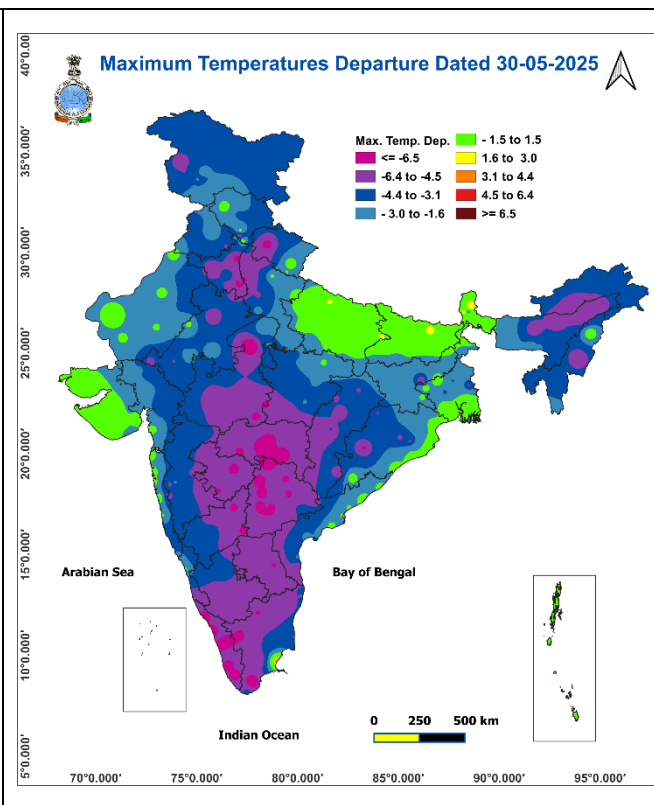
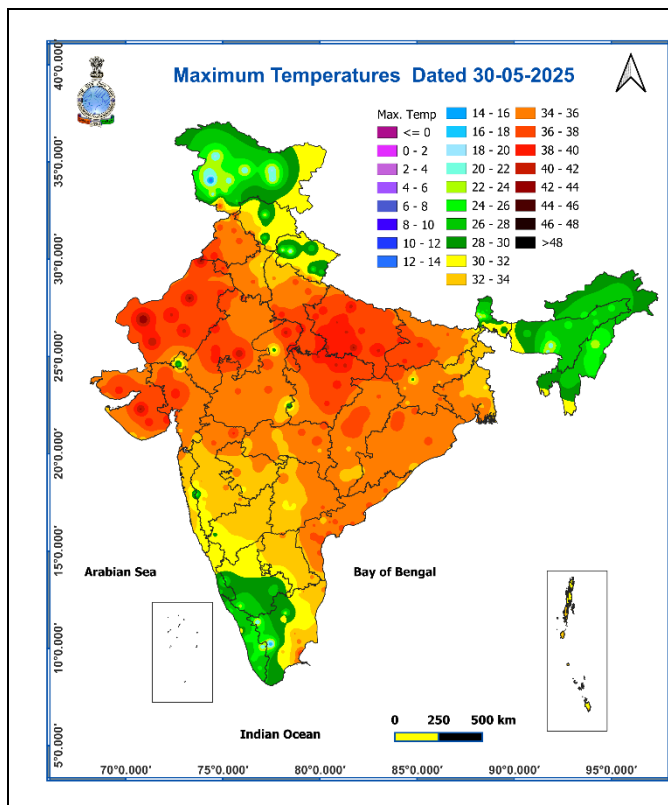


Fig. 3: Minimum Temperatures

Fig. 4: Departure of Minimum Temperatures

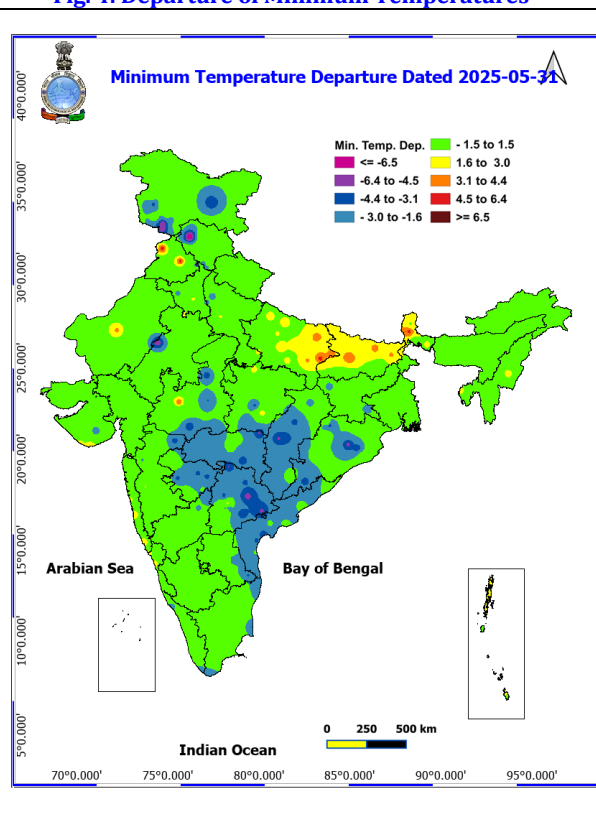
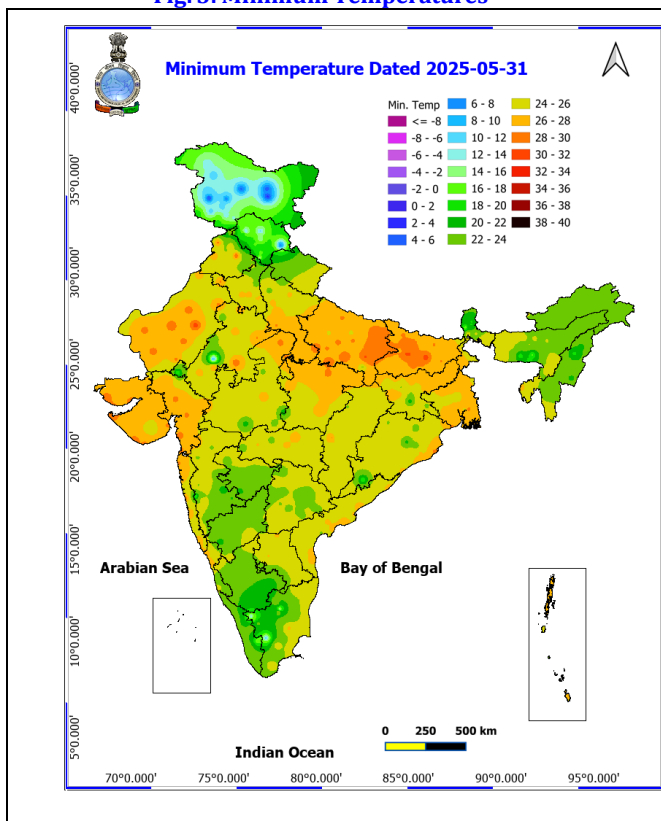




Fig. 5: Advance of Southwest Monsoon 2025

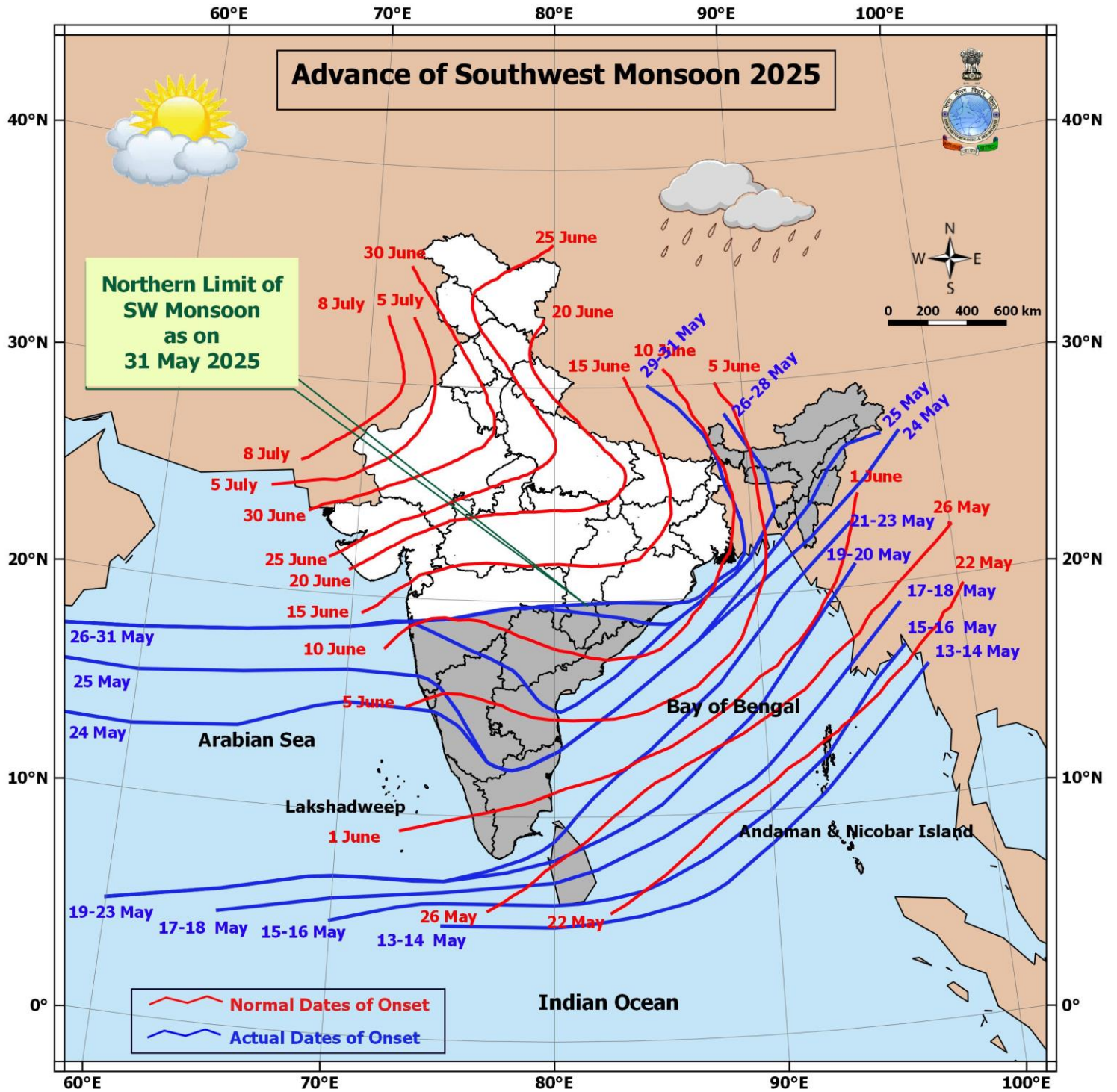
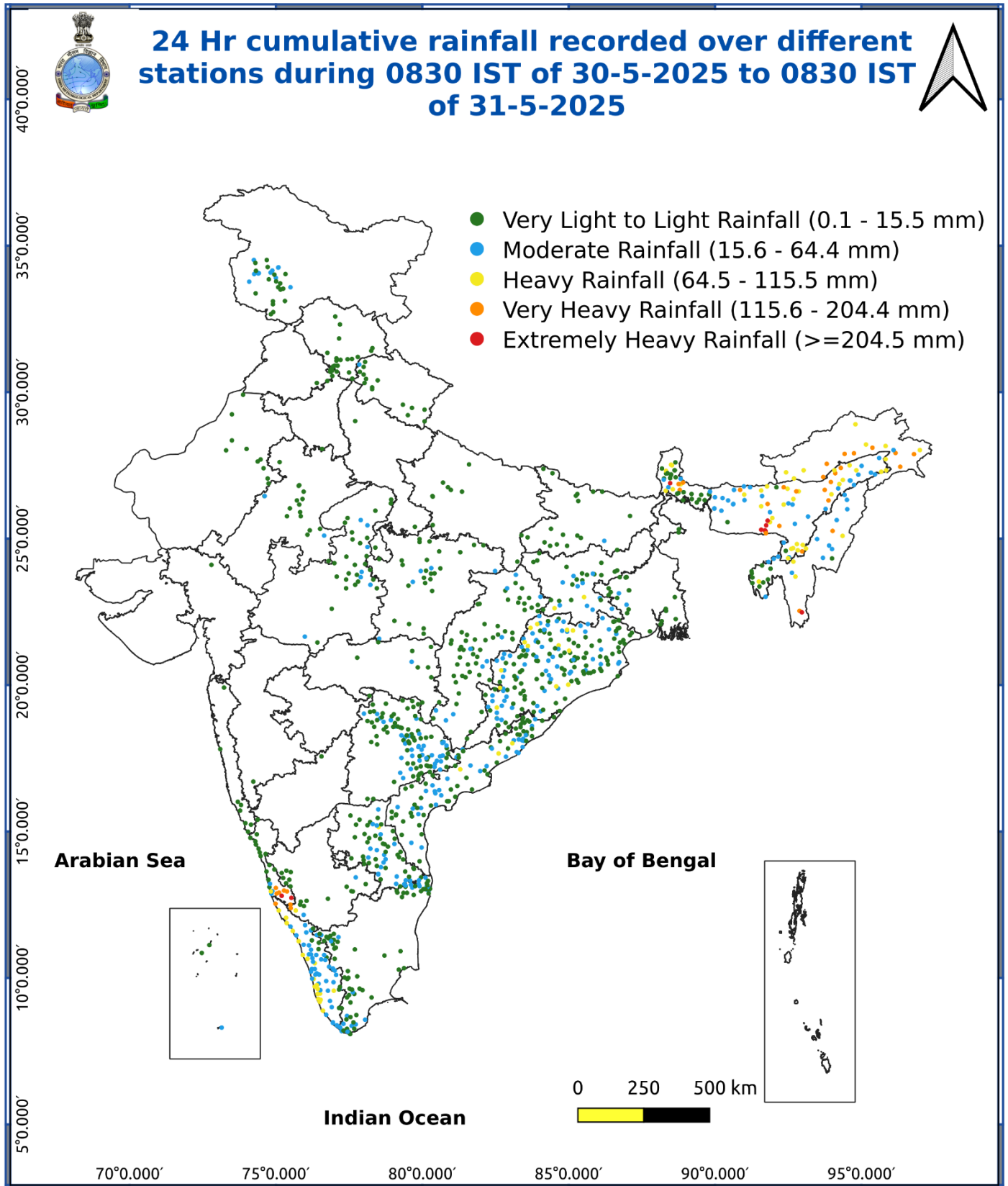


Fig. 6: Accumulated Rainfall (mm) during past 24 hours



### Impact & Action Suggested due to heavy to very heavy rainfall over west coast and other areas (For Red & Orange colour warning areas)

- ❖ Isolated **very heavy rainfall** over Arunachal Pradesh, Sub-Himalayan West Bengal & Sikkim on 31st May, Assam & Meghalaya and Nagaland, Manipur, Mizoram & Tripura on 31st May & 01st June.

#### Impact Expected

- ❖ Localized Flooding of roads, water logging in low lying areas of the above region.
- ❖ Occasional reduction in visibility due to heavy rainfall.
- ❖ Minor damage to kutcha roads.
- ❖ Possibilities of damage to vulnerable structure.
- ❖ Localized Landslides/Mudslides
- ❖ Damage to horticulture and standing crops in some areas due to inundation.
- ❖ It may lead to riverine flooding in some river catchments (for riverine flooding please visit Web page of CWC).

#### Action Suggested

- ❖ Check for traffic congestion on your route before leaving for your destination.
- ❖ Follow any traffic advisories that are issued in this regard.
- ❖ Avoid going to areas that face the water logging problems often.
- ❖ Avoid staying in vulnerable structure.

### Impact expected and action suggested due to isolated thunderstorm with lightning/gusty & Squally winds over

- ❖ **Thundersquall wind speed reaching 50-60 kmph gusting to 70 kmph** over likely over Jammu-Kashmir on 31st May; Himachal Pradesh during 31st May-02nd June; Rajasthan during 02nd-04th June.

#### Impact expected:

- Minor to Major damage to banana and papaya trees.
- Strong wind/hail may damage plantation, horticulture and standing crops.
- Partial damage to vulnerable structures due to strong winds.
- Minor damage to kutcha houses/walls and huts.
- Loose objects may fly.

#### Action suggested:

- People are advised to keep a watch on the weather for worsening conditions and be ready to move to safer places accordingly.
- Stay indoors, close windows & doors and avoid travel if possible.
- Take safe shelters; do not take shelter under trees.
- Do not lie on concrete floors and do not lean against concrete walls.
- Unplug electrical/ electronic appliances.
- Immediately get out of water bodies.
- Keep away from all the objects that conduct electricity.

### Agromet advisories for likely impact of Heavy Rainfall / Hailstorms / Gusty Winds / Heat Wave

- In North Eastern States, Sub-Himalayan West Bengal & Sikkim, Jammu & Kashmir, Himachal Pradesh, Uttarakhand, Konkan & Goa, Tamil Nadu, Kerala, Lakshadweep, Coastal Karnataka, South Interior Karnataka and Coastal Andhra Pradesh, drain out excess water and ensure proper drainage in fields with standing crops and vegetables.
- Shift the harvested produce in safer places or cover the produce with tarpaulin sheets in the fields. Tie the harvested crops properly and cover them to minimise the risk of displacement due to strong surface winds.
- Provide mechanical support to horticultural crops and staking to vegetables to avoid lodging.

#### Livestock / Poultry / Fishery

- Keep the animals inside the shed during heavy rainfall and provide them balanced feed.
- Store feed and fodder in a safe place to prevent spoilage
- Construct an outlet with proper netting around the ponds to drain out excess water, thereby preventing fish from escaping in case of overflow.



## Flash Flood Guidance:

### **24 hours Outlook for the Flash Flood Risk (FFR) till 1130 IST of 01-06-2025 :**

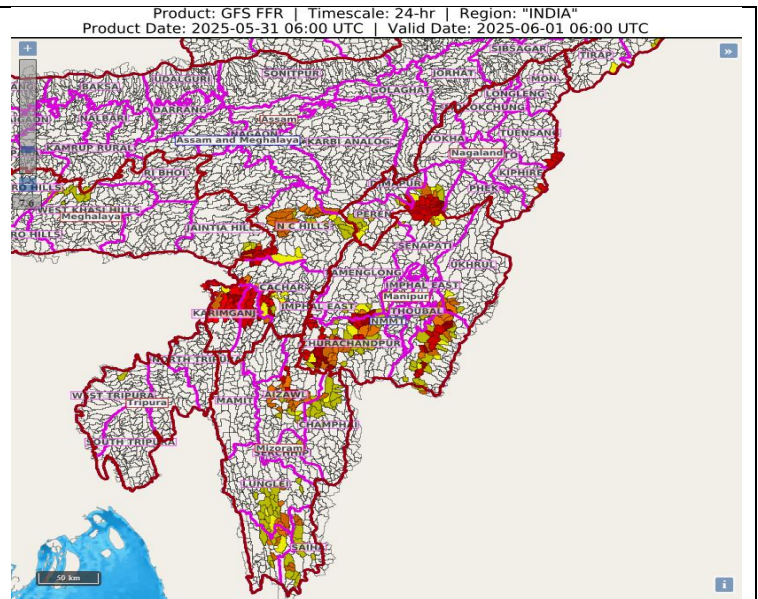
**Low flash flood risk** likely over few watersheds & neighbourhoods of following Met Sub-divisions during next 24 hours.  
**Nagaland Mizoram Manipur Tripura (NMMT) –**

**Manipur-** Chandel, Churachandpur, Senapati, Tamenglong, Ukhrul districts.

**Mizoram-** Aizawl, Champhai, Lawngtlai, Lunglei, Saiha, Serchhip districts.

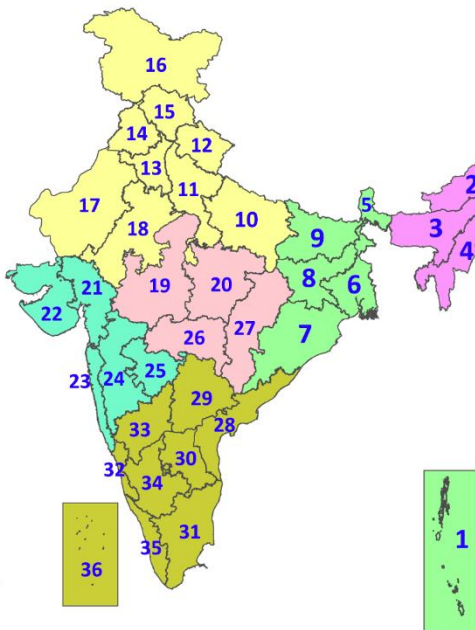
**Nagaland-** Dimapur, Kiphire, Kohima, Peren and Tuensang districts.

Surface runoff/ Inundation may occur at some fully saturated soils & low-lying areas over Area of Concern (AoC) as shown in map due to expected rainfall occurrence in next 24 hours.



## LEGENDS

1. अंडमान और निकोबार द्वीपसमूह
2. अरुणाचल प्रदेश
3. असम और मेघालय
4. नागालैंड, मणिपुर, मिजोरम और त्रिपुरा
5. उप-हिमालयी पश्चिम बंगाल और सिक्किम
6. गंगीय पश्चिम बंगाल
7. ओडिशा
8. झारखंड
9. बिहार
10. पूर्वी उत्तर प्रदेश
11. पश्चिम उत्तर प्रदेश
12. उत्तराखंड
13. हरियाणा, चंडीगढ़ और दिल्ली
14. पंजाब
15. हिमाचल प्रदेश
16. जम्मू और कश्मीर और लद्दाख
17. पश्चिम राजस्थान
18. पूर्वी राजस्थान
19. पश्चिम मध्य प्रदेश
20. पूर्वी मध्य प्रदेश
21. गुजरात
22. सौराष्ट्र
23. कोंकण और गोवा
24. मध्य महाराष्ट्र
25. मराठवाड़ा
26. विदर्भ
27. छत्तीसगढ़
28. तटीय आंध्र प्रदेश और यनम
29. तेलंगाना
30. रायलसीमा
31. तमिलनाडु, पुडुचेरी और कराईकल
32. तटीय कर्नाटक
33. आंतरिक उत्तरी कर्नाटक
34. आंतरिक दक्षिणी कर्नाटक
35. केरल और माहे
36. लक्षद्वीप



1. Andaman & Nicobar Islands
2. Arunachal Pradesh
3. Assam & Meghalaya
4. Nagaland, Manipur, Mizoram & Tripura
5. Sub-Himalayan West Bengal & Sikkim
6. Gangetic West Bengal
7. Odisha
8. Jharkhand
9. Bihar
10. East Uttar Pradesh
11. West Uttar Pradesh
12. Uttarakhand
13. Haryana, Chandigarh & Delhi
14. Punjab
15. Himachal Pradesh
16. Jammu & Kashmir and Ladakh
17. West Rajasthan
18. East Rajasthan
19. West Madhya Pradesh
20. East Madhya Pradesh
21. Gujarat
22. Saurashtra
23. Konkan & Goa
24. Madhya Maharashtra
25. Marathwada
26. Vidarbha
27. Chhattisgarh
28. Coastal Andhra Pradesh & Yanam
29. Telangana
30. Rayalaseema
31. Tamilnadu, Puducherry & Karaikal
32. Coastal Karnataka
33. North Interior Karnataka
34. South Interior Karnataka
35. Kerala & Mahe
36. Lakshadweep

## SPATIAL DISTRIBUTION (% of Stations reporting)

% Stations	Category	% Stations	Category
76-100	Widespread (WS/Most Places)	26-50	Scattered (SCT/A Few Places)
51-75	Fairly Widespread (FWS/Many Places)	1-25	Isolated (ISOL)



Fog



Heavy Rain



Very Heavy Rain



Extremely Heavy Rain



Thunder & Lightning



Hailstorm



Dust Raising Winds



Heavy Snow



Dust Storm



Heat Wave



Warm Night



Hot Day



Hot & Humid



Strong Surface Winds



Cold Wave



Cold Day



Ground Frost

### COLOUR CODED WARNING

No Warning (No Action)

Watch (Be Aware)

Alert (Be Prepared To Take Action)

Warning (Take Action)

### Probabilistic Forecast

Terms	Probability of Occurrence (%)
Unlikely	< 25
Likely	25 - 50
Very Likely	50 - 75
Most Likely	> 75

\* Red colour warning does not mean "Red Alert", Red colour warning means "Take Action".

Forecast and Warning for any day is valid from 0830 hours IST of day till 0830 hours IST of next day.

For more details, kindly visit <https://mausam.imd.gov.in> or contact: 011-2434-4599

(Service to the Nation since 1875)



## DEFINITION/CRITERIA

### Rain/ Snow \*

Heavy: 64.5 to 115.5 mm/cm \*  
Very Heavy: 115.6 to 204.4 mm/cm\*  
Extremely Heavy: > 204.4 mm/cm \*

### Heat Wave

When maximum temperature of a station reaches  $\geq 40^\circ\text{C}$  for plains and  $\geq 30^\circ\text{C}$  for hilly regions  
(a) Based on Departure from normal

Heat Wave: Maximum Temperature Departure from normal  $4.5^\circ\text{C}$  to  $6.4^\circ\text{C}$ .

Severe Heat Wave: Maximum Temperature Departure from normal  $\geq 6.5^\circ\text{C}$

(b). Based on Actual maximum temperature

Heat Wave: When actual maximum temperature  $\geq 45^\circ\text{C}$ .

Severe Heat Wave: When actual maximum temperature  $\geq 47^\circ\text{C}$

(c). Criteria for heat wave for coastal stations

When maximum temperature departure is  $> 4.5^\circ\text{C}$  from normal. Heat Wave may be described provided maximum temperature  $\geq 37^\circ\text{C}$

### Warm Night

When maximum temperature remains  $40^\circ\text{C}$

Warm Night: When minimum temperature departure  $4.5^\circ\text{C}$  to  $6.4^\circ\text{C}$ .

Severe Warm Night: When minimum temperature departure  $> 6.4^\circ\text{C}$ .

### Cold Wave

When minimum temperature of a station  $\leq 10^\circ\text{C}$  for plains and  $\leq 0^\circ\text{C}$  for hilly regions.  
(a). Based on departure

Cold Wave: Minimum Temperature Departure from normal  $-4.5^\circ\text{C}$  to  $-6.4^\circ\text{C}$ .

Severe Cold Wave: Minimum Temperature Departure from normal  $\leq -6.5^\circ\text{C}$

(b) Based on actual Minimum Temperature (for Plains only)

Cold Wave : When Minimum Temperature is  $\leq 4.0^\circ\text{C}$

Severe Cold Wave: When Minimum Temperature is  $\leq 2.0^\circ\text{C}$

(c) For Coastal Stations

When Minimum Temperature departure is  $\leq -4.5^\circ\text{C}$  & actual Minimum Temperature is  $\leq 15^\circ\text{C}$

### Cold Day

When minimum temperature of a station  $\leq 10^\circ\text{C}$  for plains and  $\leq 0^\circ\text{C}$  for hilly regions  
Based on departure

Cold Day: Maximum Temperature Departure from normal  $-4.5^\circ\text{C}$  to  $-6.4^\circ\text{C}$ .

Severe Cold Day: Maximum Temperature Departure from normal  $\leq -6.5^\circ\text{C}$

### Fog

Phenomenon of small droplets suspended in air and the horizontal visibility  $< 1\text{km}$

Moderate Fog: When the visibility between 500-200 metres

Dense Fog: when the visibility between 50- 200 metres

Very Dense Fog: when the visibility  $< 50$  metres

### Thunderstorm

Sudden electrical discharges manifested by a flash of light (Lightning) and a sharp rumbling sound (thunder)

### Dust/Sand Storm

An ensemble of particles of dust or sand energetically lifted to great heights by a strong and turbulent wind.

### Frost

Ice deposits on ground

Air temperature  $\leq 4^\circ\text{C}$  ( over Plains)

### Squall

A strong wind that rises suddenly, lasts for atleast 1 minute.

Moderate: Wind speed 52-61 kmph

Severe: Wind speed 62-87 kmph

Very Severe: Wind speed  $> 87$  kmph

### Sea State

Effect of various waves in the sea over specific area

Rough to very rough: Wind speed 41-62 kmph (22-33 knots) & Wave height 2.5-6 metre

High to very high: Wind speed 63-117 kmph ( 34-63 knots) & Wave height 6-14 metre

Phenomenal: Wind speed  $> 117$  kmph ( $> 63$  knots) & Wave height  $> 14$  metre

### Cyclone

Cyclonic Storm: Wind speed 62-87 kmph (34-47 knots)

Severe Cyclonic Storm: Wind speed 88-117 kmph (48-63 knots)

Very Severe Cyclonic Storm: Wind speed 118-165 kmph (64 - 89 knots)

Extremely Severe Cyclonic Storm: Wind speed 166-220 kmph (90 -119 knots)

Super Cyclone Strom: Wind speed  $> 220$  kmph ( $> 119$  knots)