

2025-09-06

Time of Issue: 13:00:00 hours IST
(Mid-Day)

ALL INDIA WEATHER SUMMARY AND FORECAST BULLETIN

Significant Weather Features

Weather Forecast and Warnings:

West and Northwest India:

Extremely heavy rainfall over Gujarat State and west Rajasthan on 06th & 07th; with exceptionally heavy rainfall (≥ 30 cm) over Gujarat region on 06th; Extremely heavy falls also likely over East Rajasthan on 06th September.

Isolated heavy rainfall is very likely over West Rajasthan on 09th; Uttarakhand during 06th - 08th & 12th; Himachal Pradesh on 06; Haryana Chandigarh & Delhi on 06th & 09th; Punjab on 06th; East Uttar Pradesh on 11th & 12th; East Rajasthan on 08th September; Gujarat State on 08th September with very heavy rainfall over Konkan & Goa and Madhya Maharashtra on 06th & 07th; West Rajasthan on 08th; East Rajasthan on 07th September. Light to moderate rainfall accompanied with thunderstorm & lightning at a most/many places very likely over the region during next 7 days.

East & Central India:

Isolated heavy rainfall likely over East Madhya Pradesh on 10th & 11th; Odisha on 06th, 7th, 9th & 10th; Sub-Himalayan West Bengal & Sikkim during next 7 days; Bihar on during 08th-10th; Andaman & Nicobar Islands on 06th, 10th & 11th; Chhattisgarh during 10th -12th September with very heavy rainfall over West Madhya Pradesh on 6th September.

Light to moderate rainfall at most/many places accompanied with thunderstorm & lightning likely over the region during next 7 days.

Northeast India:

Isolated heavy rainfall likely over Assam & Meghalaya during 06th-08th and on 11th & 12th; Nagaland, Manipur, Mizoram & Tripura during 06th-08th and Arunachal Pradesh on 06th & 07th September.

Light/moderate rainfall at many places accompanied with thunderstorm & lightning likely during next 7 days.

South Peninsular India

Isolated heavy rainfall likely over Tamil Nadu during 06th 10th; Kerala & Mahe on 09th & 10th; Lakshadweep and Coastal Andhra Pradesh & Yanam during 10th – 12th September. Strong surface winds (speed reaching 30-40 kmph) very likely over Coastal Andhra Pradesh & Yanam, Rayalaseema during next 5 days.

Light to moderate rainfall accompanied with thunderstorm & lightning at a few places likely over the region during next 5 days.

***Red color warning does not mean "Red Alert" Red color warning means "Take Action"**

Forecast and warning for any day is valid from 0830 hours IST of day till 0830 hours IST of next day

For more details kindly visit <https://mausam.imd.gov.in> or contact 011-2434-4599

(Service to the nation since 1875)

Main Weather Observations:

❖ **Rainfall distribution** (from 0830 hours IST of yesterday to 0830 hours IST of today): **at most places** over East Rajasthan, West Madhya Pradesh, Gujarat Region, Konkan & Goa and Coastal Karnataka; **at many places** over Andaman & Nicobar Islands, Sub Himalayan West Bengal & Sikkim, West Uttar Pradesh, Uttarakhand, Saurashtra & Kutch, Madhya Maharashtra, Kerala & Mahe and Lakshadweep; **at a few places** over Arunachal Pradesh, Assam & Meghalaya, Nagaland, Manipur, Mizoram & Tripura, Gangetic West Bengal, Odisha, Haryana-Chandigarh-Delhi, Punjab, Himachal Pradesh, West Rajasthan, East Madhya Pradesh, Marathwada, Vidarbha, Chhattisgarh and South Interior Karnataka; **at isolated places** over Jharkhand, Bihar, East Uttar Pradesh, Jammu-Kashmir-Ladakh-Gilgit-Baltistan-Muzaffarabad, Coastal Andhra Pradesh & Yanam, Telangana, Rayalaseema, Tamil Nadu, Puducherry & Karaikal and North Interior Karnataka;

❖ **Significant rainfall recorded(in cm)** (from 0830 hours IST of yesterday to 0830 hours IST of today): **East Rajasthan:** Banera SR (dist Bhilwara) 16; Kotri (dist Bhilwara), Sarwar (dist Ajmer) 12 Each; Mandal SR (dist Bhilwara), Bhilwara Tehsil SR (dist Bhilwara), Bhilwara (dist Bhilwara) 11 Each; Jagpura SR (dist Banswara) 10; Garhi (dist Banswara), Deogarh (dist Rajsamand), Pachpahar SR (dist Jhalawar), Chhotisadri (dist Pratapgarh), Geola SR (dist Ajmer) 9 Each; **Gujarat Region:** Dolvan (dist Tapi) 15; Kadana (dist Mahisagar), Kaprada (dist Valsad) 14 Each; Bardoli (dist Surat), Lunawada (dist Mahisagar), Valod (dist Tapi), Dhansura (dist Aravalli) 11 Each; Santrampur (dist Mahisagar), Khergam (dist Navsari), Gandevi (dist Navsari), Songadh (dist Tapi), Dhanpur (dist Dahod) 10 Each; Shahera (dist Panchmahal), Silvassa (dist Dadara & Nagar Haveli) 9 Each; **Himachal Pradesh:** Naina Davi (dist Bilaspur) 14; **West Madhya Pradesh:** Ratlam-aws (dist Ratlam) 13; Mahidpur (dist Ujjain), Goharganj (dist Raisen) 11 Each; Piploda (dist Ratlam) 9; **Konkan & Goa:** Matheran (dist Raigad) 12; Ambarnath (dist Thane), Vasai (dist Palghar) 10 Each; Tbia IMD Part Time (dist Thane), Palghar ARG (dist Palghar) 9 Each; **West Uttar Pradesh:** Agra (CWC) (dist Agra) 10; **Odisha:** Boudhgarh (dist Boudhgarh) 9.

❖ **Heavy Rainfall observed** (from 0830 hours IST of yesterday to 0830 hours IST of today): **Heavy to very heavy rain** at isolated places over Himachal Pradesh, East Rajasthan, West Madhya Pradesh, Gujarat Region and Konkan & Goa. **Heavy rain** at isolated places over Sub Himalayan West Bengal & Sikkim, Odisha, West Uttar Pradesh, Haryana-Chandigarh-Delhi, West Rajasthan, Madhya Maharashtra and Coastal Andhra Pradesh & Yanam.

❖ **Minimum Temperature Departures (as on 06-09-2025): markedly above normal(> 5.1°C)** at isolated places over Assam & Meghalaya, Sub Himalayan West Bengal & Sikkim, Bihar, East Uttar Pradesh, West Uttar Pradesh, Himachal Pradesh, Jammu-Kashmir-Ladakh-Gilgit-Baltistan-Muzaffarabad and West Madhya Pradesh. **appreciably above normal(3.1°C to 5.0°C)** at many places over East Madhya Pradesh; at isolated places over Gangetic West Bengal, Odisha, West Rajasthan, East Rajasthan, Saurashtra & Kutch and Tamil Nadu, Puducherry & Karaikal. **above normal(1.6°C to 3.0°C)** at few places over Nagaland, Manipur, Mizoram & Tripura, Uttarakhand and Lakshadweep; at isolated places over Haryana-Chandigarh-Delhi, Gujarat Region, Madhya Maharashtra, Vidarbha and Coastal Andhra Pradesh & Yanam. **near normal(-1.5°C to 1.5°C)** at most places over Andaman & Nicobar Islands, Arunachal Pradesh, Jharkhand, Punjab, Konkan & Goa, Marathwada, Chhattisgarh, Telangana, Rayalaseema, Coastal Karnataka, North Interior Karnataka, South Interior Karnataka and Kerala & Mahe. **The lowest minimum temperature** of 17.0°C is reported at KHANDWA (MADHYA PRADESH) over the Plains of India.

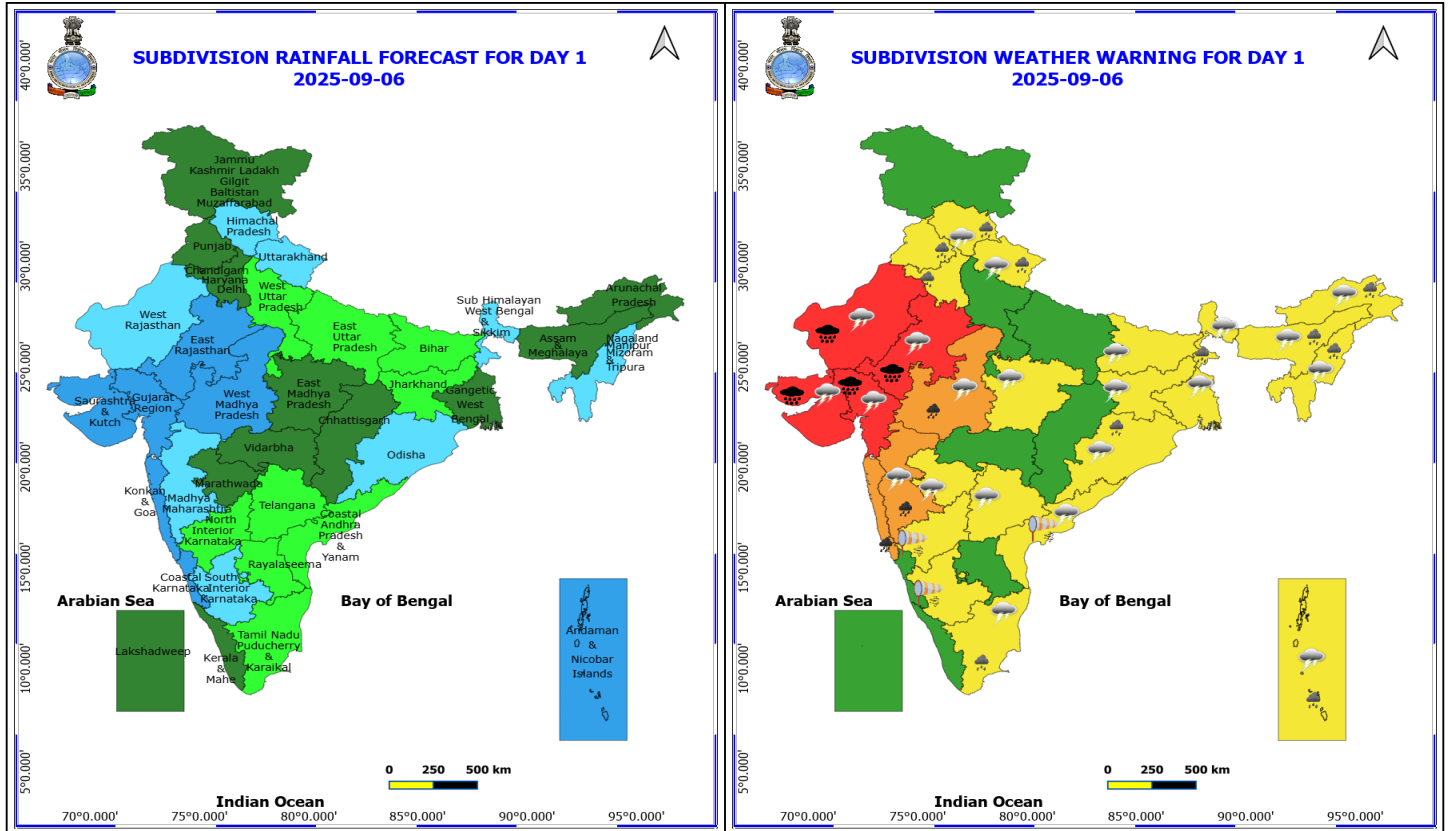
❖ **Maximum Temperature Departures (as on 05-09-2025): markedly above normal(> 5.1°C)** at isolated places over Odisha. **appreciably above normal(3.1°C to 5.0°C)** at few places over Sub Himalayan West Bengal & Sikkim; at isolated places over Assam & Meghalaya, Bihar, Chhattisgarh, Coastal Andhra Pradesh & Yanam and Tamil Nadu, Puducherry & Karaikal. **above normal(1.6°C to 3.0°C)** at most places over Nagaland, Manipur, Mizoram & Tripura; at few places over Gangetic West Bengal, Jharkhand, Jammu-Kashmir-Ladakh-Gilgit-Baltistan-Muzaffarabad, Telangana and Kerala & Mahe; at isolated places over East Uttar Pradesh, Uttarakhand, Haryana-Chandigarh-Delhi, Punjab, West Rajasthan, East Madhya Pradesh and Vidarbha. **near normal(-1.5°C to 1.5°C)** at many places over West Uttar Pradesh, Saurashtra & Kutch and Marathwada; at most places over Andaman & Nicobar Islands, Arunachal Pradesh, Himachal Pradesh, Gujarat Region, Rayalaseema, Coastal Karnataka, North Interior Karnataka and Lakshadweep; at few places over Konkan & Goa, Madhya Maharashtra and South Interior Karnataka; at isolated places over East Rajasthan and West Madhya Pradesh. **The highest maximum temperature** of 40.2°C is reported at MADURAI (A) (TAMIL NADU).

Meteorological Analysis (Based on 0830 hours IST)

- The well marked low pressure area over southeast Rajasthan & neighbourhood moved west-northwestwards and lay over central parts of south Rajasthan at 0830 hrs IST of today, the 06th September, 2025. The associated cyclonic circulation extended upto 9.6 km above mean sea level tilting southwards with height. It is likely to continue to move west-northwestwards and concentrate into a depression over South Rajasthan & adjoining North Gujarat during next 24 hours.
- The monsoon trough now passes through Jaisalmer, centre of well marked low pressure area over central parts of south Rajasthan, Guna, Damoh, Pendra Road, Sambalpur, Gopalpur and thence east-southeastwards to east central Bay of Bengal.
- A trough runs from South Punjab to East Central Arabian Sea off Konkan coast across the above cyclonic circulation associated with well marked low pressure area over central parts of south Rajasthan, eastern parts of Gujarat region, north Konkan between 3.1 & 7.6 km above mean sea level.
- The other trough now runs from cyclonic circulation associated with well marked low pressure area over central parts of south Rajasthan to northeast Jharkhand across Madhya Pradesh between 0.9 & 1.5 km above mean sea level.
- The Western Disturbance as a trough in middle & upper tropospheric westerlies with its axis at 5.8 km above mean sea level now runs roughly along Long. 69°E to the north of Lat. 28°N.
- An upper air cyclonic circulation lies over northwest Bay of Bengal & adjoining west central Bay of Bengal off south Odisha & north Andhra Pradesh coasts between 3.1 & 5.8 km above mean sea level.
-

Weather Outlook for subsequent 3 days

- Isolated to scattered rainfall likely over the entire country.



6 September (Day 1)

- ❖ **Heavy to Very Heavy Rainfall with isolated Extremely Heavy Rainfall** very likely at isolated places over Gujarat State and Rajasthan.
- ❖ **Heavy to Very Heavy Rainfall** very likely at isolated places over Konkan & Goa, Madhya Maharashtra and West Madhya Pradesh.
- ❖ **Heavy Rainfall** very likely at isolated places over Andaman & Nicobar Islands, Arunachal Pradesh, Assam & Meghalaya, Haryana, Chandigarh & Delhi, Himachal Pradesh, Nagaland, Manipur, Mizoram and Tripura, Odisha, Punjab, Sub Himalayan West Bengal & Sikkim, Tamil Nadu Puducherry & Karaikal and Uttarakhand.
- ❖ **Thunderstorm accompanied with lightning & gusty winds(30-40kmph)** very likely at isolated places over Bihar, Jharkhand, Odisha, Sub Himalayan West Bengal & Sikkim, Tamil Nadu Puducherry & Karaikal and Telangana.
- ❖ **Thunderstorm accompanied with Lightning** very likely at isolated places over Andaman & Nicobar Islands, Arunachal Pradesh, Assam & Meghalaya, Coastal Andhra Pradesh, Gangetic West Bengal, Gujarat State, Himachal Pradesh, Madhya Maharashtra, Madhya Pradesh, Marathwada, Nagaland, Manipur, Mizoram and Tripura, Rajasthan and Uttarakhand.
- ❖ **Strong Surface Winds** very likely at isolated places over Coastal Andhra Pradesh and Interior Karnataka.

Squally wind with speed reaching 45 kmph to 55 kmph gusting to 65 kmph is likely to prevail along and off Somalia coasts, some parts of southwest & adjoining westcentral Arabian Sea.

Squally weather with wind speed reaching 40 - 50 kmph gusting to 60 kmph likely to prevail along and off Gujarat, north Maharashtra coasts, over many parts of northeast Arabian Sea & adjoining some parts of eastcentral Arabian Sea; over Gulf of Mannar and few parts of southwest Bay of Bengal.

***Red color warning does not mean "Red Alert" Red color warning means "Take Action"**

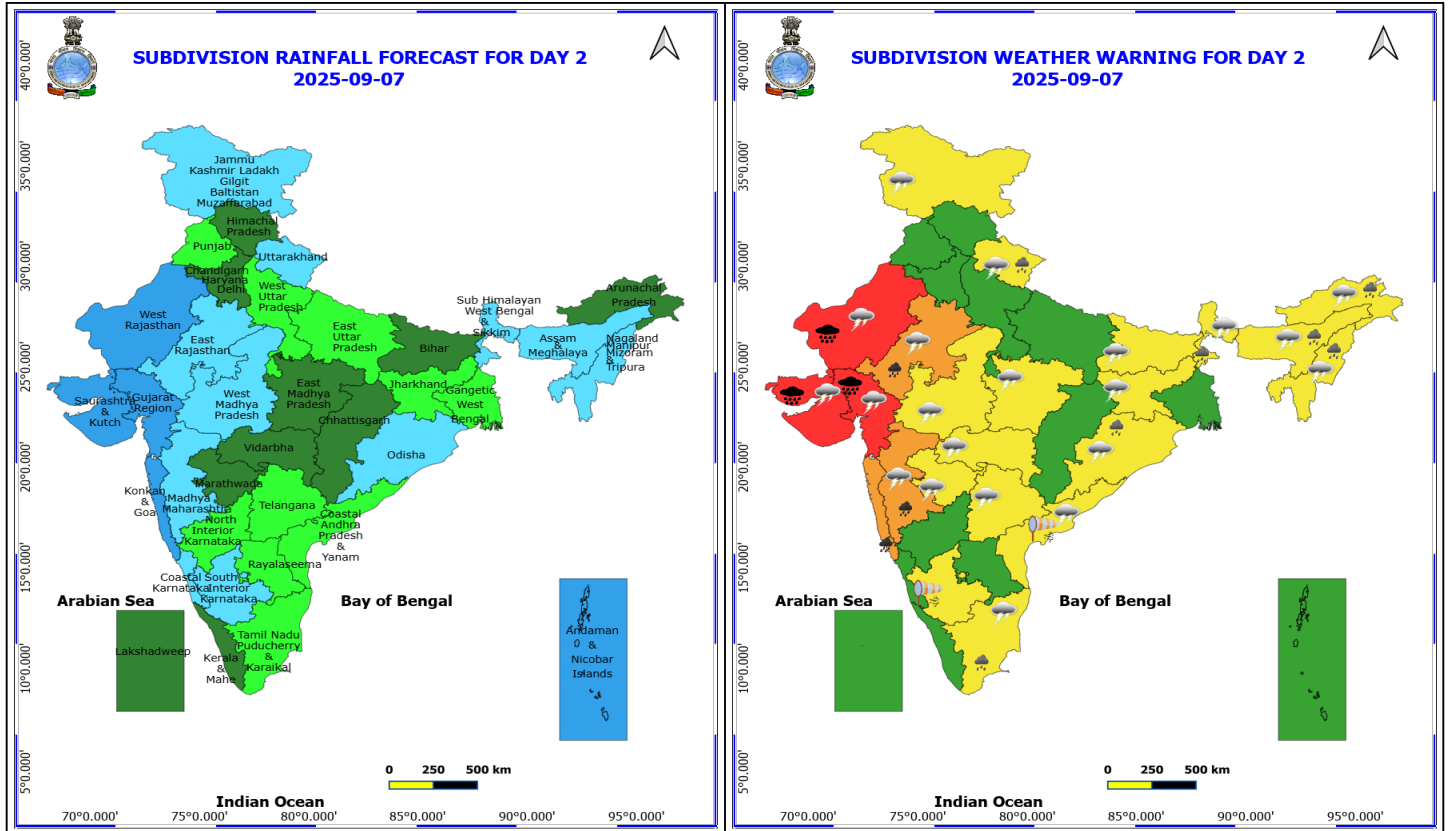
Forecast and warning for any day is valid from 0830 hours IST of day till 0830 hours IST of next day

For more details kindly visit <https://mausam.imd.gov.in> or contact 011-2434-4599

(Service to the nation since 1875)



Squally weather with wind speed reaching 45 - 55 kmph gusting to 65 kmph likely to prevail along and off Gujarat coasts and adjoining sea areas.



7 September (Day 2)

- ❖ **Heavy to Very Heavy Rainfall with isolated Extremely Heavy Rainfall** very likely at isolated places over Gujarat State and West Rajasthan.
- ❖ **Heavy to Very Heavy Rainfall** very likely at isolated places over East Rajasthan, Konkan & Goa and Madhya Maharashtra.
- ❖ **Heavy Rainfall** very likely at isolated places over Arunachal Pradesh, Assam & Meghalaya, Nagaland, Manipur, Mizoram and Tripura, Odisha, Sub Himalayan West Bengal & Sikkim, Tamil Nadu Puducherry & Karaikal and Uttarakhand.
- ❖ **Thunderstorm accompanied with lightning & gusty winds(30-40kmph)** very likely at isolated places over Bihar, Jammu-Kashmir-Ladakh-Gilgit-Baltistan-Muzaffarabad, Jharkhand, Odisha, Sub Himalayan West Bengal & Sikkim, Tamil Nadu Puducherry & Karaikal and Telangana.
- ❖ **Thunderstorm accompanied with Lightning** very likely at isolated places over Arunachal Pradesh, Assam & Meghalaya, Coastal Andhra Pradesh, Gujarat State, Madhya Pradesh, Maharashtra, Nagaland, Manipur, Mizoram and Tripura, Rajasthan and Uttarakhand.
- ❖ **Strong Surface Winds** very likely at isolated places over Coastal Andhra Pradesh and South Interior Karnataka.

Squally wind with speed reaching 45 kmph to 55 kmph gusting to 65 kmph is likely to prevail along and off Somalia and Oman coasts, many parts of westcentral Arabian Sea, some parts of southwest Arabian sea, & adjoining few parts of northwest Arabian sea.

Squally weather with wind speed reaching 40 - 50 kmph gusting to 60 kmph likely to prevail along and off Gujarat coasts; over many parts of northeast Arabian sea, some parts of northwest Arabian sea, few parts of eastcentral

***Red color warning does not mean "Red Alert" Red color warning means "Take Action"**

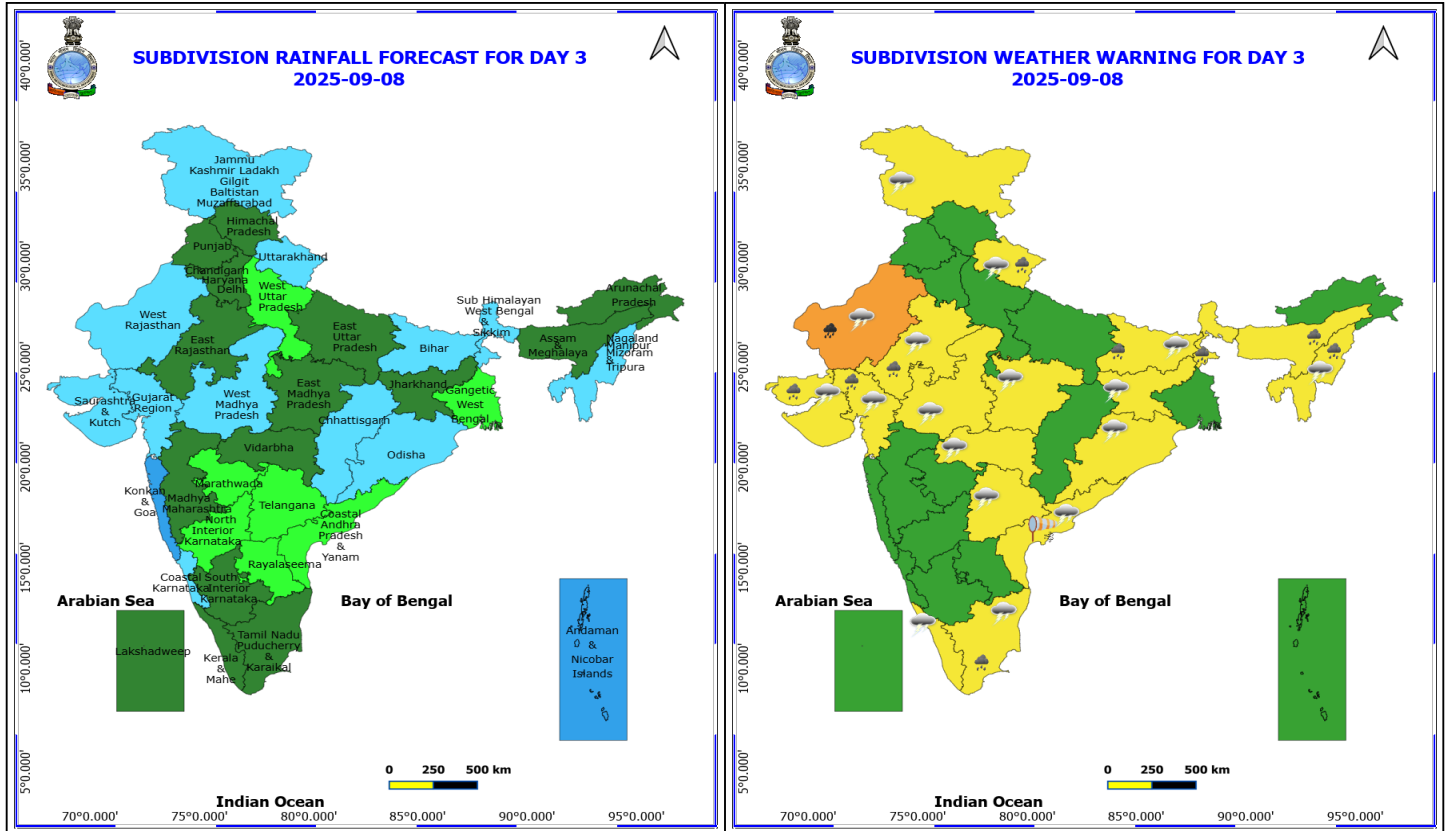
Forecast and warning for any day is valid from 0830 hours IST of day till 0830 hours IST of next day

For more details kindly visit <https://mausam.imd.gov.in> or contact 011-2434-4599

(Service to the nation since 1875)

Arabian sea, few parts of southwest Bay of Bengal; over few parts of Comorin area.

Squally weather with wind speed reaching 45 - 55 kmph gusting to 65 kmph likely to prevail along and off Gujarat coasts and adjoining sea areas.



8 September (Day 3)

- ❖ **Heavy to Very Heavy Rainfall** very likely at isolated places over West Rajasthan.
- ❖ **Heavy Rainfall** very likely at isolated places over Assam & Meghalaya, Bihar, East Rajasthan, Gujarat State, Nagaland, Manipur, Mizoram and Tripura, Sub Himalayan West Bengal & Sikkim, Tamil Nadu Puducherry & Karaikal and Uttarakhand.
- ❖ **Thunderstorm accompanied with lightning & gusty winds(30-40kmph)** very likely at isolated places over Bihar, Jammu-Kashmir-Ladakh-Gilgit-Baltistan-Muzaffarabad, Jharkhand, Kerala & Mahe, Odisha, Tamil Nadu Puducherry & Karaikal and Telangana.
- ❖ **Thunderstorm accompanied with Lightning** very likely at isolated places over Coastal Andhra Pradesh, Gujarat State, Madhya Pradesh, Nagaland, Manipur, Mizoram and Tripura, Rajasthan, Uttarakhand and Vidarbha.
- ❖ **Strong Surface Winds** very likely at isolated places over Coastal Andhra Pradesh.

Squally wind with speed reaching 45 kmph to 55 kmph gusting to 65 kmph is likely to prevail along and off Somalia and Oman coasts, many parts of westcentral, some parts of southwest Arabian Sea, few parts of northwest & eastcentral Arabian sea.

Squally weather with wind speed reaching 40 - 50 kmph gusting to 60 kmph likely to prevail along and off Gujarat coasts, some parts of northeast Arabian Sea, some parts of eastcentral, few parts of northwest Arabian Sea; over few parts of Comorin Area and few parts of southwest Bay of Bengal.

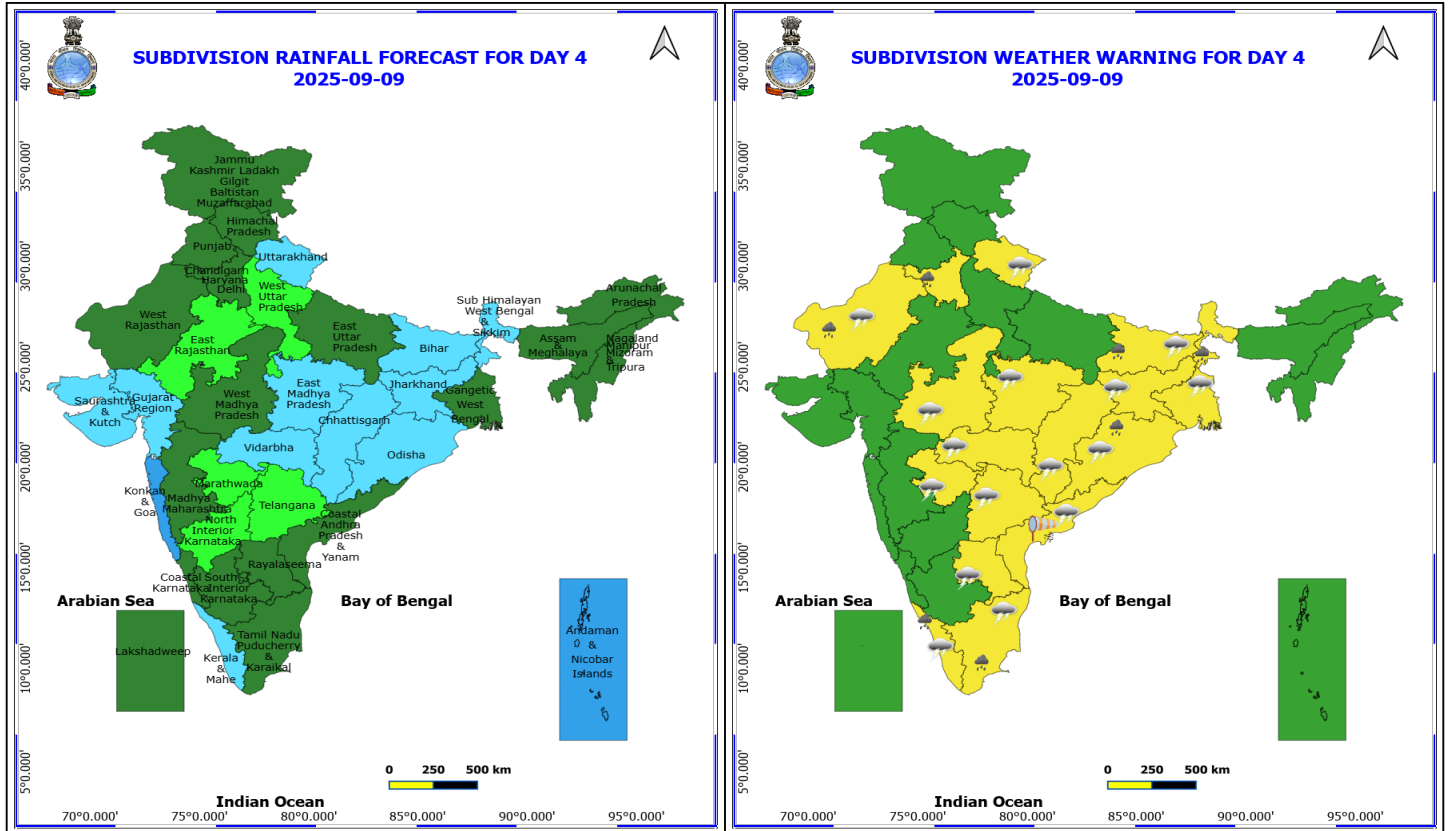
Squally weather with wind speed reaching 45 - 55 kmph gusting to 65 kmph likely to prevail along and off Gujarat coasts and adjoining sea Area.

***Red color warning does not mean "Red Alert" Red color warning means "Take Action"**

Forecast and warning for any day is valid from 0830 hours IST of day till 0830 hours IST of next day

For more details kindly visit <https://mausam.imd.gov.in> or contact 011-2434-4599

(Service to the nation since 1875)



9 September (Day 4)

- ❖ **Heavy Rainfall** likely at isolated places over Bihar, Haryana, Chandigarh & Delhi, Kerala & Mahe, Odisha, Sub Himalayan West Bengal & Sikkim, Tamil Nadu Puducherry & Karaikal and West Rajasthan.
- ❖ **Thunderstorm accompanied with lightning & gusty winds(30-40kmph)** likely at isolated places over Bihar, Jharkhand, Kerala & Mahe, Odisha, Tamil Nadu Puducherry & Karaikal and Telangana.
- ❖ **Thunderstorm accompanied with Lightning** likely at isolated places over Andhra Pradesh, Chhattisgarh, Gangetic West Bengal, Madhya Pradesh, Marathwada, Uttarakhand, Vidarbha and West Rajasthan.
- ❖ **Strong Surface Winds** likely at isolated places over Coastal Andhra Pradesh.

Squally wind with speed reaching 45 kmph to 55 kmph gusting to 65 kmph is likely to prevail along and off Somalia and Oman coasts, many parts of westcentral Arabian Sea & some parts of southwest Arabian sea.

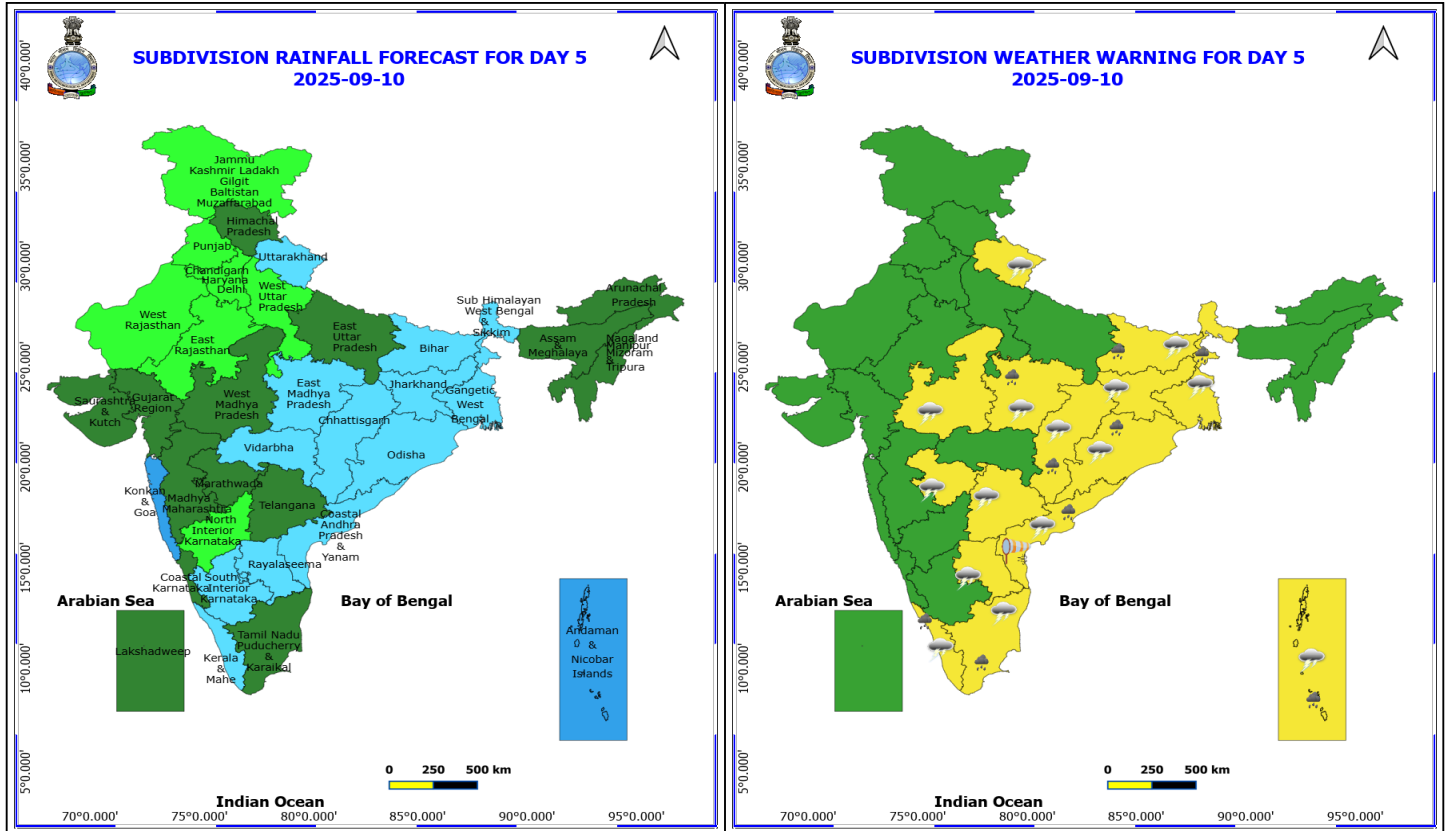
Squally weather with wind speed reaching 40 - 50 kmph gusting to 60 kmph likely to prevail over few parts of Comorin area.

***Red color warning does not mean "Red Alert" Red color warning means "Take Action"**

Forecast and warning for any day is valid from 0830 hours IST of day till 0830 hours IST of next day

For more details kindly visit <https://mausam.imd.gov.in> or contact 011-2434-4599

(Service to the nation since 1875)



10 September (Day 5)

- ❖ **Heavy Rainfall** likely at isolated places over Andaman & Nicobar Islands, Bihar, Chhattisgarh, Coastal Andhra Pradesh, East Madhya Pradesh, Kerala & Mahe, Odisha, Sub Himalayan West Bengal & Sikkim and Tamil Nadu Puducherry & Karaikal.
- ❖ **Thunderstorm accompanied with lightning & gusty winds(40-50kmph)** likely at isolated places over Andaman & Nicobar Islands.
- ❖ **Thunderstorm accompanied with lightning & gusty winds(30-40kmph)** likely at isolated places over Bihar, Jharkhand, Kerala & Mahe, Odisha, Tamil Nadu Puducherry & Karaikal and Telangana.
- ❖ **Thunderstorm accompanied with Lightning** likely at isolated places over Andhra Pradesh, Chhattisgarh, Gangetic West Bengal, Madhya Pradesh, Marathwada and Uttarakhand.
- ❖ **Strong Surface Winds** likely at isolated places over Coastal Andhra Pradesh.

Squally wind with speed reaching 45 kmph to 55 kmph gusting to 65 kmph is likely to prevail along and off Somalia and Oman coasts, some parts of southwest & westcentral Arabian Sea.

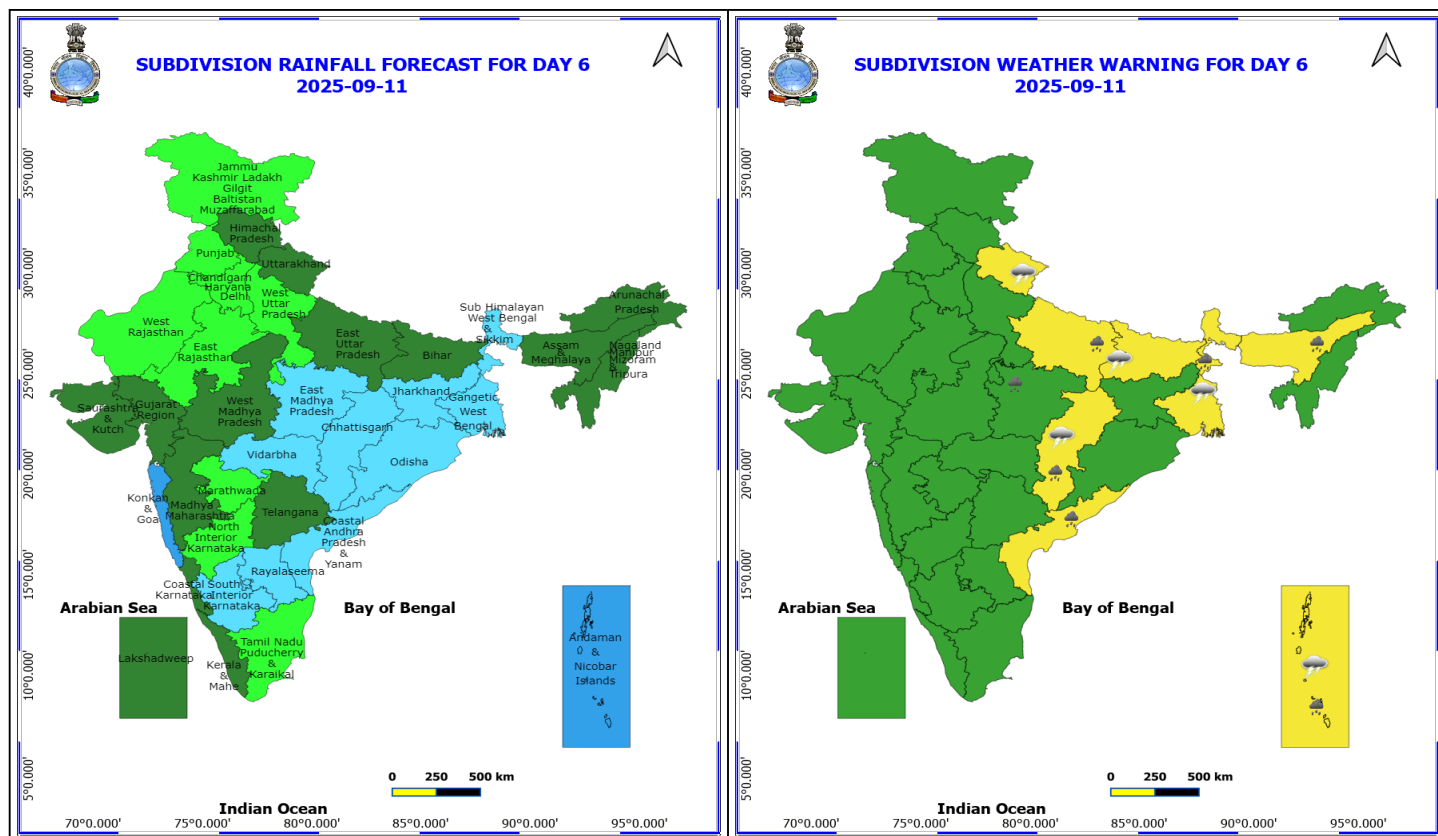
Squally weather with wind speed reaching 40 - 50 kmph gusting to 60 kmph likely to prevail over few parts of southwest Bay of Bengal.

***Red color warning does not mean "Red Alert" Red color warning means "Take Action"**

Forecast and warning for any day is valid from 0830 hours IST of day till 0830 hours IST of next day

For more details kindly visit <https://mausam.imd.gov.in> or contact 011-2434-4599

(Service to the nation since 1875)



11 September (Day 6)

- ❖ **Heavy Rainfall** likely at isolated places over Andaman & Nicobar Islands, Assam & Meghalaya, Chhattisgarh, Coastal Andhra Pradesh, East Madhya Pradesh, East Uttar Pradesh and Sub Himalayan West Bengal & Sikkim.
- ❖ **Thunderstorm accompanied with lightning & gusty winds(30-40kmph)** likely at isolated places over Andaman & Nicobar Islands and Bihar.
- ❖ **Thunderstorm accompanied with Lightning** likely at isolated places over Chhattisgarh, Gangetic West Bengal and Uttarakhand.

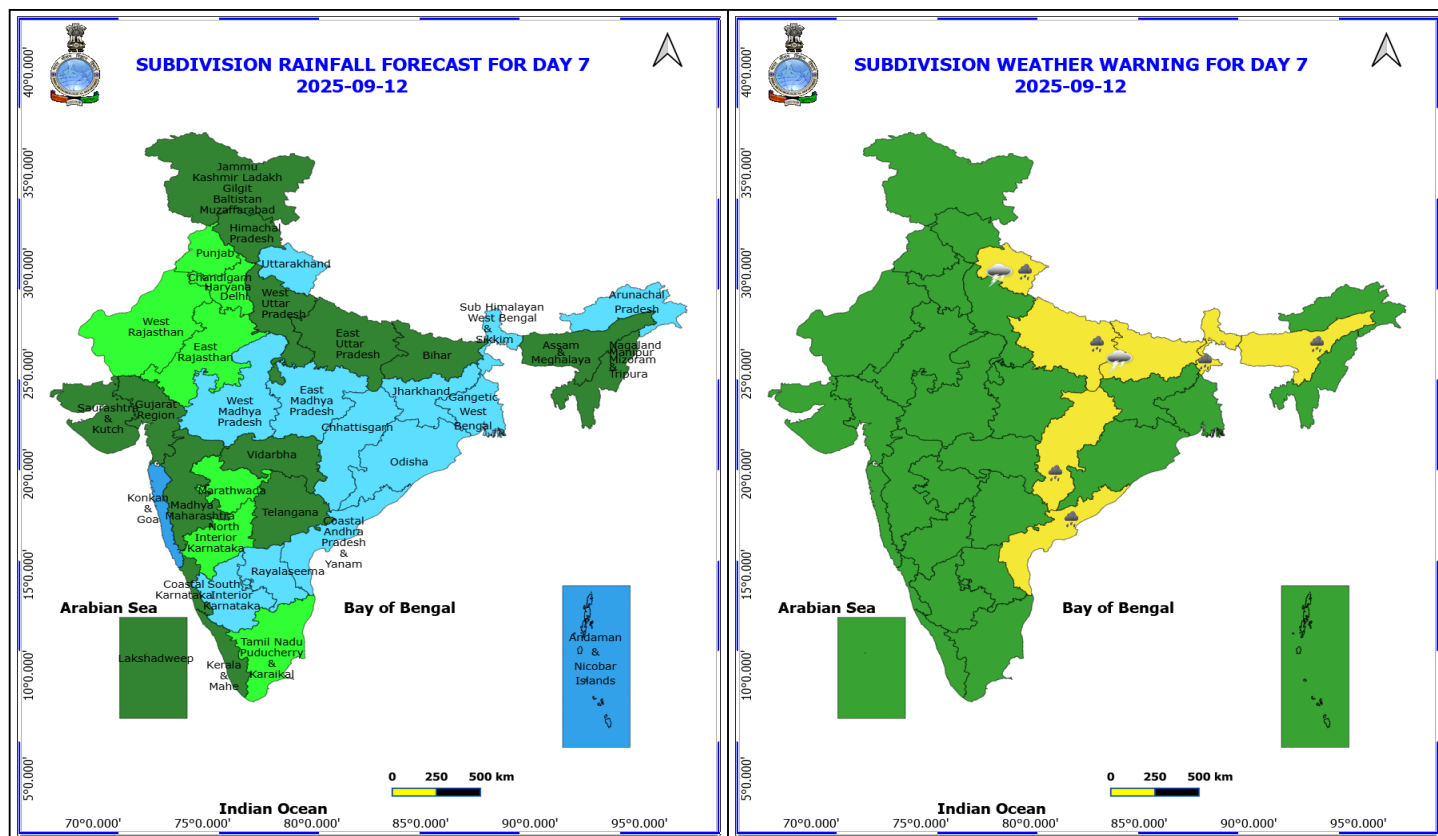
No Fishermen Warning

*Red color warning does not mean "Red Alert" Red color warning means "Take Action"

Forecast and warning for any day is valid from 0830 hours IST of day till 0830 hours IST of next day

For more details kindly visit <https://mausam.imd.gov.in> or contact 011-2434-4599

(Service to the nation since 1875)



12 September (Day 7)

- ❖ **Heavy Rainfall** likely at isolated places over Assam & Meghalaya, Chhattisgarh, Coastal Andhra Pradesh, East Uttar Pradesh, Sub Himalayan West Bengal & Sikkim and Uttarakhand.
- ❖ **Thunderstorm accompanied with lightning & gusty winds(30-40kmph)** likely at isolated places over Bihar.
- ❖ **Thunderstorm accompanied with Lightning** likely at isolated places over Uttarakhand.

No Fishermen Warning

***Red color warning does not mean "Red Alert" Red color warning means "Take Action"**

Forecast and warning for any day is valid from 0830 hours IST of day till 0830 hours IST of next day

For more details kindly visit <https://mausam.imd.gov.in> or contact 011-2434-4599

(Service to the nation since 1875)

Flash Flood Warnings

24 hours Outlook for the Flash Flood Risk (FFR) till 1130 IST of 07-09-2025:

Moderate to high flash flood risk likely over few watersheds & neighbourhoods of following Met Sub- divisions during next 24 hours.

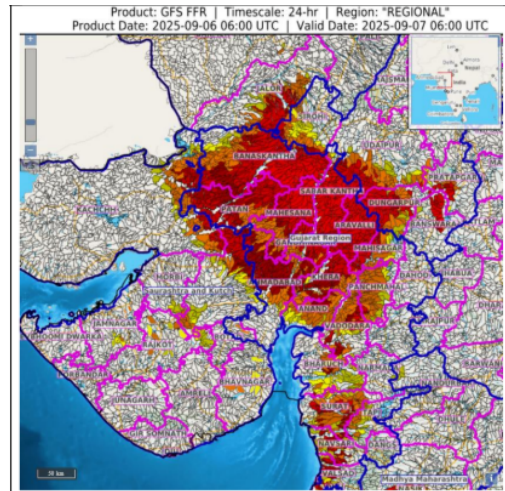
East Rajasthan - Banswara, Dungarpur, Pratapgarh, Sirohi and Udaipur districts.

West Rajasthan –Jalore district.

Gujarat Region – Ahmedabad, Anand, Aravalli, Bharuch, Banaskantha, Dadar & Nagar Haveli, Daman, Gandhinagar, Khera, Mahisagar, Mehsana, Narmada, Navsari, Panchmahal, Patan, Sabar Kantha, Surat, Tapi, Vadodara and Valsad districts.

Saurashtra & Kutch - Kachch, Botad, Bhavnagar, Morbi, Jamnagar, Rajkot and Surendranagar districts.

Surface runoff/ Inundation may occur at some fully saturated soils & low-lying areas over Area of Concern (AoC) as shown in map due to expected rainfall occurrence in next 24 hours.



***Red color warning does not mean "Red Alert" Red color warning means "Take Action"**

Forecast and warning for any day is valid from 0830 hours IST of day till 0830 hours IST of next day

For more details kindly visit <https://mausam.imd.gov.in> or contact 011-2434-4599

(Service to the nation since 1875)



Table-1

7 Days Rainfall Forecast

S.No.	Subdivision	6- Sep	7- Sep	8- Sep	9- Sep	10- Sep	11- Sep	12- Sep
		Day 1	Day 2	Day 3	Day 4	Day 5	Day 6	Day 7
1	ANDAMAN & NICOBAR ISLANDS	WS	WS	WS	WS	WS	WS	WS
2	ARUNACHAL PRADESH	SCT	SCT	SCT	SCT	SCT	SCT	FWS
3	ASSAM & MEHGHALAYA	SCT	FWS	SCT	SCT	SCT	SCT	SCT
4	N. M. M. & T.	FWS	FWS	FWS	SCT	SCT	SCT	SCT
5	S.H. WEST BENGAL & SIKKIM	FWS	FWS	FWS	FWS	FWS	FWS	FWS
6	GANGETIC WEST BENGAL	SCT	ISOL	ISOL	SCT	FWS	FWS	FWS
7	ODISHA	FWS	FWS	FWS	FWS	FWS	FWS	FWS
8	JHARKHAND	ISOL	ISOL	SCT	FWS	FWS	FWS	FWS
9	BIHAR	ISOL	SCT	FWS	FWS	FWS	SCT	SCT
10	EAST UTTAR PRADESH	ISOL	ISOL	SCT	SCT	SCT	SCT	SCT
11	WEST UTTAR PRADESH	ISOL	ISOL	ISOL	ISOL	ISOL	ISOL	SCT
12	UTTARAKHAND	FWS	FWS	FWS	FWS	FWS	SCT	FWS
13	HARYANA, CHD & DELHI	SCT	SCT	SCT	SCT	ISOL	ISOL	ISOL
14	PUNJAB	SCT	ISOL	SCT	SCT	ISOL	ISOL	ISOL
15	HIMACHAL PRADESH	FWS	SCT	SCT	SCT	SCT	SCT	SCT
16	JAMMU AND KASHMIR AND LADAKH	SCT	FWS	FWS	SCT	ISOL	ISOL	SCT
17	WEST RAJASTHAN	FWS	WS	FWS	SCT	ISOL	ISOL	ISOL
18	EAST RAJASTHAN	WS	FWS	SCT	ISOL	ISOL	ISOL	ISOL
19	WEST MADHYA PRADESH	WS	FWS	FWS	SCT	SCT	SCT	FWS
20	EAST MADHYA PRADESH	SCT	SCT	SCT	FWS	FWS	FWS	FWS
21	GUJRAT REGION	WS	WS	FWS	FWS	SCT	SCT	SCT
22	SAURASHTRA & KUTCH	WS	WS	FWS	FWS	SCT	SCT	SCT
23	KONKAN & GOA	WS	WS	WS	WS	WS	WS	WS
24	MADHYA MAHARASHTRA	FWS	FWS	SCT	SCT	SCT	SCT	SCT
25	MARATHWADA	SCT	SCT	ISOL	ISOL	SCT	ISOL	ISOL
26	VIDARBHA	SCT	SCT	SCT	FWS	FWS	FWS	SCT
27	CHATTISGARH	SCT	SCT	FWS	FWS	FWS	FWS	FWS
28	COASTAL ANDHRA PRADESH	ISOL	ISOL	ISOL	SCT	FWS	FWS	FWS
29	TELANGANA	ISOL	ISOL	ISOL	ISOL	SCT	SCT	SCT
30	RAYALASEEMA	ISOL	ISOL	ISOL	SCT	FWS	FWS	FWS
31	TAMILNADU & PUDUCHERRY	ISOL	ISOL	SCT	SCT	SCT	ISOL	ISOL
32	COSTAL KARNATAKA	WS	FWS	FWS	SCT	SCT	SCT	SCT
33	NORTH INTERIOR KARNATAKA	ISOL	ISOL	ISOL	ISOL	ISOL	ISOL	ISOL
34	SOUTH INTERIOR KARNATAKA	FWS	FWS	SCT	SCT	FWS	FWS	FWS
35	KERALA	SCT	SCT	SCT	FWS	FWS	SCT	SCT
36	LAKSHDWEEP	SCT	SCT	SCT	SCT	SCT	SCT	SCT

Legend	Category	%Stations
WS	Widespread/Most Places	76-100
FWS	Fairly Widespread/Many Places	51-75
SCT	Scattered/ A Few Places	26-50
ISOL	Isolated Places	1-25
DRY	No Rain	0

*Red color warning does not mean "Red Alert" Red color warning means "Take Action"

Forecast and warning for any day is valid from 0830 hours IST of day till 0830 hours IST of next day

For more details kindly visit <https://mausam.imd.gov.in> or contact 011-2434-4599

(Service to the nation since 1875)

Fig. 1: Maximum Temperatures Dated 2025-09-06

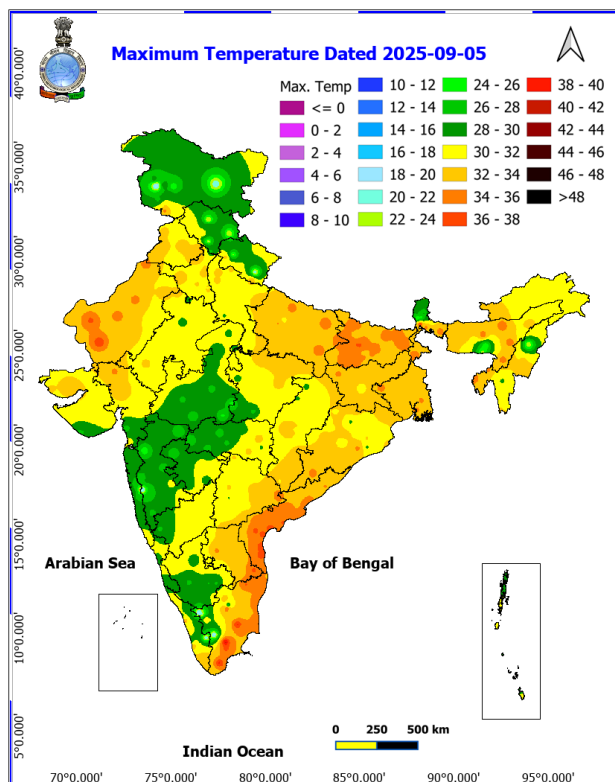


Fig. 2: Departure of Maximum Temp. Dated 2025-09-06

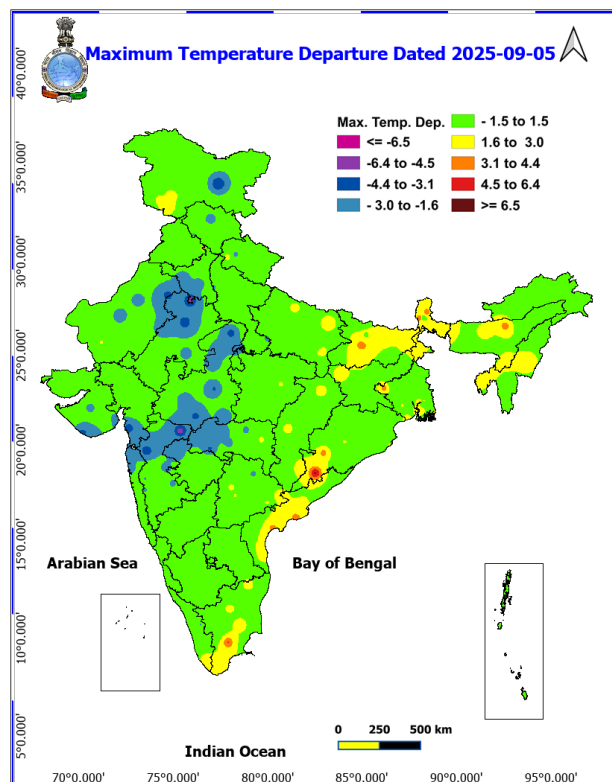


Fig. 3: Minimum Temperatures Dated 2025-09-06

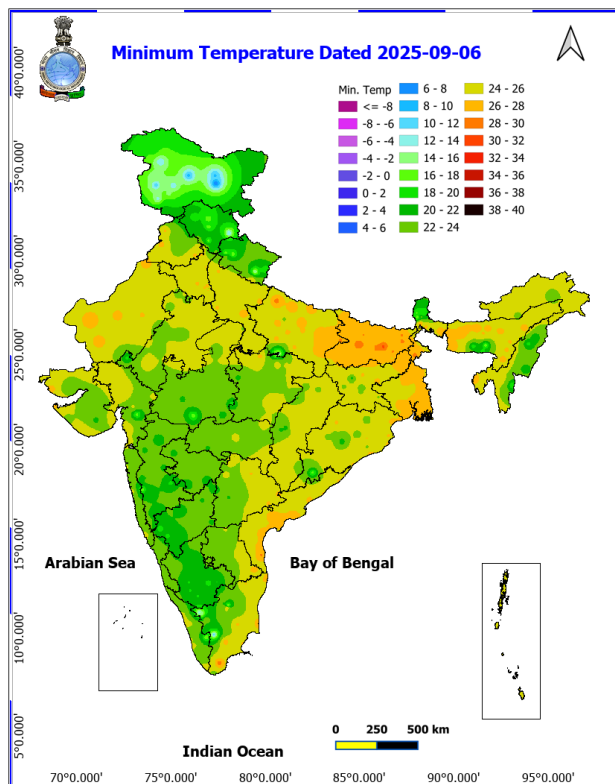
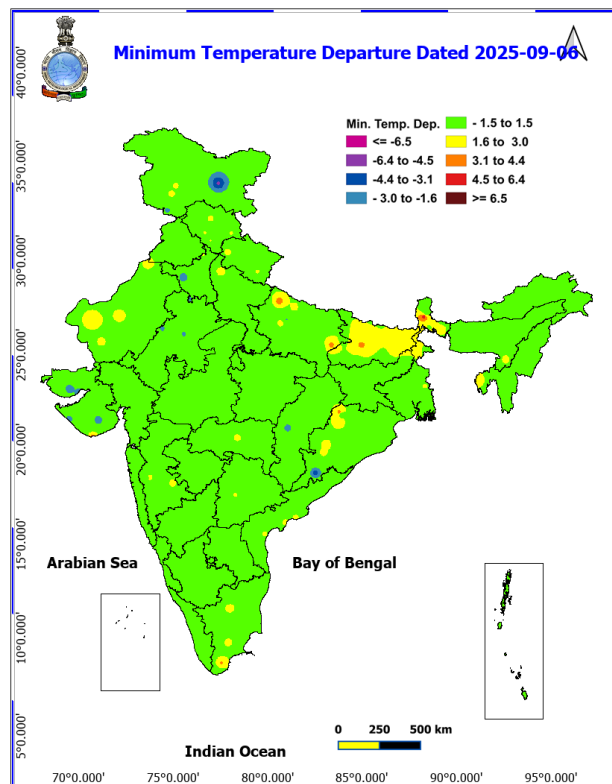
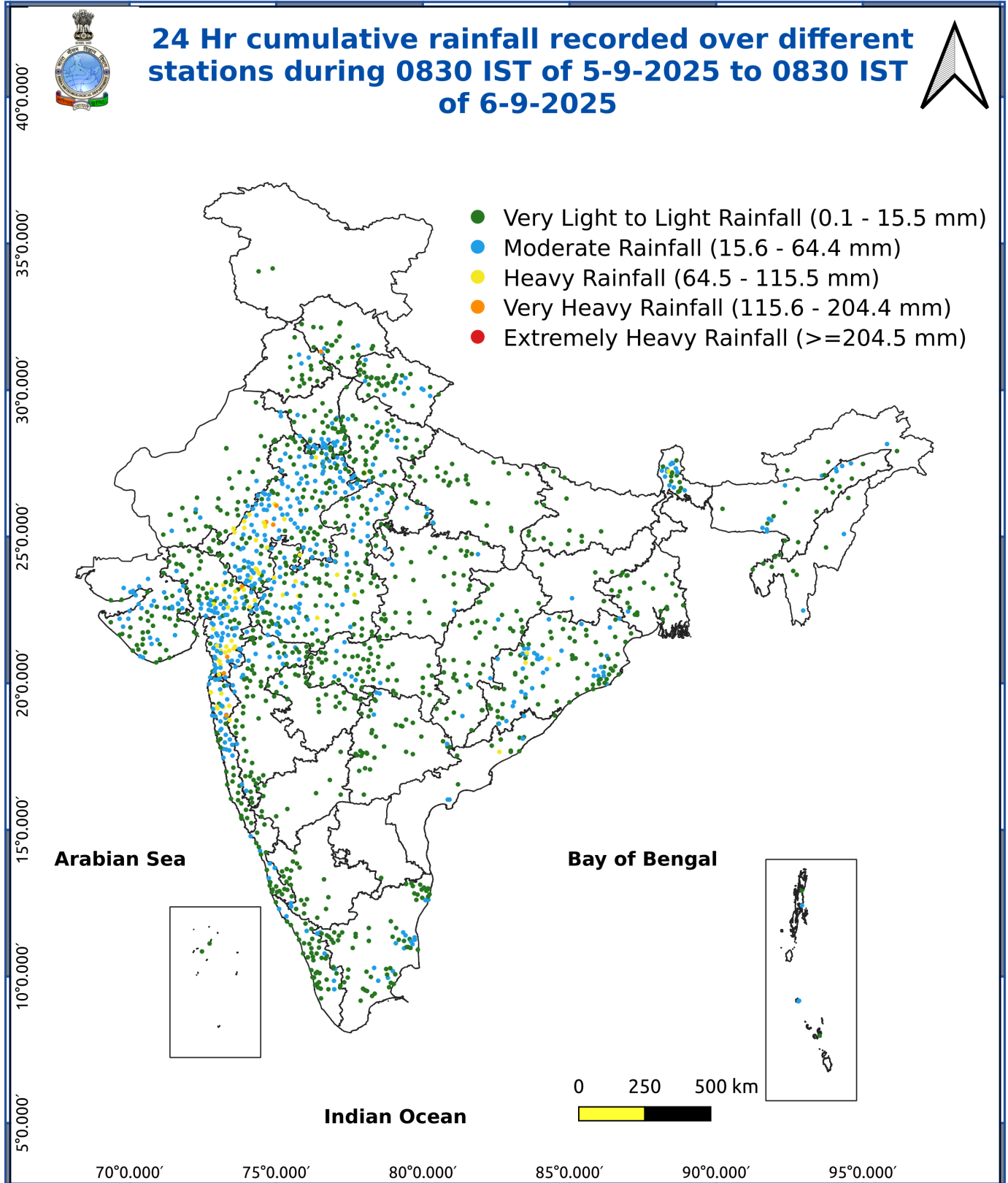


Fig. 4: Departure of Minimum Temp. Dated 2025-09-06





*Red color warning does not mean "Red Alert" Red color warning means "Take Action"

Forecast and warning for any day is valid from 0830 hours IST of day till 0830 hours IST of next day

For more details kindly visit <https://mausam.imd.gov.in> or contact 011-2434-4599

(Service to the nation since 1875)

Impact & Action Suggested due to

Extremely heavy rainfall very likely at isolated places over Gujarat State and west Rajasthan on 06th & 07th; with exceptionally heavy rainfall (≥ 30 cm) over Gujarat region on 06th; over East Rajasthan on 06th September.

Very heavy rainfall over West Madhya Pradesh on 06th, East Rajasthan on 07th September, Konkan & Goa and Madhya Maharashtra on 06th & 07th; West Rajasthan on 08th.

Impact Expected

Localized Flooding of roads, water logging in low lying areas and closure of underpasses mainly in urban areas of the above region.

Occasional reduction in visibility due to heavy rainfall.

Disruption of traffic in major cities due to water logging in roads leading to increased travel time.

Minor damage to kutcha roads.

Possibilities of damage to vulnerable structure.

Localized Landslides/Mudslides/landslips/mudslips/landsinks/mudsinks.

Damage to horticulture and standing crops in some areas due to inundation.

It may lead to riverine flooding in some river catchments (for riverine flooding please visit Web page of CWC)

Action Suggested

Check for traffic congestion on your route before leaving for your destination.

Follow any traffic advisories that are issued in this regard.

Avoid going to areas that face the water logging problems often.

Avoid staying in vulnerable structure.

Agromet advisories for various parts of the country

Agromet advisories for likely impact of Heavy / Heavy to Very Heavy / Extremely Heavy Rainfall

(Based on the IBF and advisories issued by different AMFUs)

In **Gujarat**, ensure proper drainage in the fields of castor, cotton, groundnut, pearl millet, sesame, maize and vegetables in **North Gujrat Zone**; rice, pearl millet, pigeon pea, cotton, soybean, maize and castor in **Middle Gujarat Zone**; groundnut, cotton and soybean in **North Sourashtra Zone**; cotton, green gram, black gram, pigeon pea, pearl millet and vegetables in **Bhal and Coastal Zone**; rice, sugarcane, okra, tuber crops and vegetables in **South Gujarat Heavy Rainfall Zone**; Kharif groundnut, cotton, soybean, black gram and sesame in **North West Zone**; groundnut, cotton, soybean, black gram, green gram, sesame and pigeon pea in **South Sourashtra Zone** and rice, cotton, pigeon pea and fruit orchards (banana and mango) in **South Gujarat Zone**.

In **Rajasthan**, make proper drainage arrangements in fields of cotton, maize, soybean and pulses in **Sub Humid**

***Red color warning does not mean "Red Alert" Red color warning means "Take Action"**

Forecast and warning for any day is valid from 0830 hours IST of day till 0830 hours IST of next day

For more details kindly visit <https://mausam.imd.gov.in> or contact 011-2434-4599

(Service to the nation since 1875)

Southern Plain and Aravali Hill Zone; fields of soybean, cotton, maize and vegetables in **Southern Humid Plain Zone;** fields of soybean and pigeon pea in **Southeastern Humid Plain Zone** and; standing *kharif* crops like green gram and cluster bean in **Arid Western Plain Zone**.

In **Maharashtra**, make arrangements to drain out excess water from fields of rice, finger millet, turmeric, groundnut, vegetables and fruit orchards in **Konkan** and rice, soybean, cotton, vegetable fields and fruit orchards in **ghat areas** of **Madhya Maharashtra**.

In **Madhya Pradesh**, provide adequate drainage in fields of maize, soybean, cotton, black gram and vegetables in **Jhabua Hills Zone** and soybean, maize, pulses and vegetables in **Malwa Plateau Zone**.

Livestock / Fishery

Keep the animals inside the shed during heavy rainfall and provide them balanced feed.

Store feed and fodder in a safe place to prevent spoilage.

Construct an outlet with proper netting around the ponds to drain out excess water, thereby preventing fish from escaping in case of overflow.

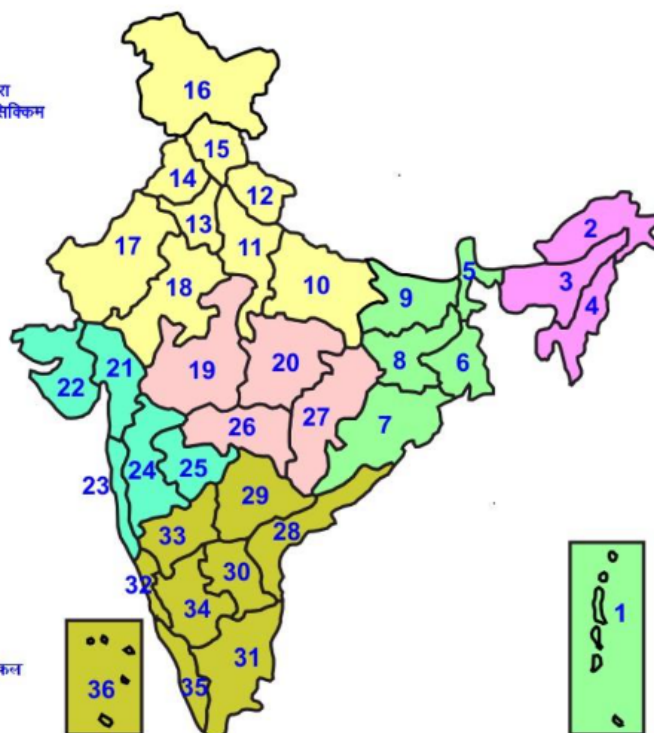
Agromet advisories for likely impact of Thunderstorm / Gusty Winds / Squally Winds

(Based on the IBF and advisories issued by different AMFUs)

Provide mechanical support to horticultural crops and staking or support to vegetables and young fruit plants / fruit-bearing plants to avoid lodging due to strong winds.

LEGENDS

- 1 अंडमान और निकोबार द्वीप समुह
- 2 अरुणाचल प्रदेश
- 3 असम और मेघालय
- 4 नागालैंड मनीपुर मीजोरम और त्रिपुरा
- 5 उप हिमालय पश्चिम बंगाल एवं सिक्किम
- 6 पश्चिम बंगाल
- 7 ओडिसा
- 8 झारखंड
- 9 बिहार
- 10 पूर्वी उत्तर प्रदेश
- 11 पश्चिम उत्तर प्रदेश
- 12 उत्तराखंड
- 13 हरियाणा चंडीगढ़ एवं दिल्ली
- 14 पंजाब
- 15 हिमाचल प्रदेश
- 16 जम्मू एवं कश्मीर एवं लद्दाख
- 17 पश्चिम राजस्थान
- 18 पूर्वी राजस्थान
- 19 पश्चिम मध्य प्रदेश
- 20 पूर्वी मध्य प्रदेश
- 21 गुजरात क्षेत्र
- 22 सौराष्ट्र एवं कच्छ
- 23 कोंकण एवं गोवा
- 24 मध्य महाराष्ट्र
- 25 मराठावाड़ा
- 26 विदर्भ
- 27 छत्तीसगढ़
- 28 तटीय आंध्र प्रदेश एवं यनम
- 29 तेलंगाना
- 30 रायलसीमा
- 31 तमिलनाडु, पुदुचेरी एवं कराईकल
- 32 तटिय कर्नाटक
- 33 आंतरिक उत्तरी कर्नाटक
- 34 आंतरिक दक्षिणी कर्नाटक
- 35 केरल एवं माहे
- 36 लक्षद्वीप



1. Andaman & Nicobar Islands
2. Arunachal Pradesh
3. Assam & Meghalaya
4. Nagaland, Manipur, Mizoram & Tripura
5. Sub-Himalayan West Bengal & Sikkim
6. Gangetic West Bengal
7. Orissa
8. Jharkhand
9. Bihar
10. East Uttar Pradesh
11. West Uttar Pradesh
12. Uttarakhand
13. Haryana, Chd & Delhi
14. Punjab
15. Himachal Pradesh
16. Jammu & Kashmir and Ladakh
17. West Rajasthan
18. East Rajasthan
19. West Madhya Pradesh
20. East Madhya Pradesh
21. Gujarat
22. Saurashtra
23. Konkan & Goa
24. Madhya Maharashtra
25. Marathwada
26. Vidharbha
27. Chhattisgarh
28. Coastal Andhra Pradesh & Yanam
29. Telangana
30. Rayalaseema
31. Tamilnadu, Puducherry & Karaikal
32. Coastal Karnataka
33. North Interior Karnataka
34. South Interior Karnataka
35. Kerala & Mahe
36. Lakshadweep

SPATIAL DISTRIBUTION (% of Stations reporting)













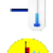




% Stations	Category	% Stations	Category
76-100	Widespread (WS/Most Places)	26-50	Scattered (SCT/ A Few Places)
51-75	Fairly Widespread (FWS/ Many Places)	1-25	Isolated (ISOL)

Subdivision Colour

- NO WARNING
- WATCH (BE UPDATED)
- ALERT (BE PREPARED TO TAKE ACTION)
- WARNING (TAKE ACTION)

Probabilistic Forecast

Terms	Probability of Occurrence (%)
Unlikely	< 25
Likely	25 - 50
Very Likely	50 - 75
Most Likely	> 75

- | | | | |
|--|---|--|--|
|  Heavy Rain |  Very Heavy Rain |  Extremely Heavy Rain |  Heavy Snow |
|  Thunderstorm & Lightning |  Hailstorm |  Dust Storm |  Dust Raising Winds |
|  Strong surface winds |  Heat Wave |  Hot Day |  Warm Night |
|  Cold Wave |  Cold Day |  Ground Frost |  Fog |
|  Hot & Humid | | | |

*Red color warning does not mean "Red Alert" Red color warning means "Take Action"

Forecast and warning for any day is valid from 0830 hours IST of day till 0830 hours IST of next day

For more details kindly visit <https://mausam.imd.gov.in> or contact 011-2434-4599

(Service to the nation since 1875)

LEGENDS

WARNING

WARNING (TAKE ACTION)
ALERT (BE PREPARED)
WATCH (BE UPDATED)
NO WARNING (NO ACTION)

Probabilistic Forecast

Terms	Probability of Occurrence (%)
Unlikely	< 25
Likely	25 - 50
Very Likely	50 - 75
Most Likely	> 75



Heavy: 64.5 to 115.5 mm/cm *
Very Heavy: 115.6 to 204.4 mm/cm *
Extremely Heavy: > 204.4 mm/cm *



When maximum temperature of a station reaches $\geq 40^{\circ}\text{C}$ for plains and $\geq 30^{\circ}\text{C}$ for hilly regions
(a) Based on Departure from normal

Heat Wave: Maximum Temperature Departure from normal 4.5°C to 6.4°C .
Severe Heat Wave: Maximum Temperature Departure from normal $\geq 6.5^{\circ}\text{C}$

(b). Based on Actual maximum temperature

Heat Wave: When actual maximum temperature $\geq 45^{\circ}\text{C}$.
Severe Heat Wave: When actual maximum temperature $\geq 47^{\circ}\text{C}$

(c). Criteria for heat wave for coastal stations

When maximum temperature departure is $> 4.5^{\circ}\text{C}$ from normal. Heat Wave may be described provided maximum temperature $\geq 37^{\circ}\text{C}$



When maximum temperature remains 40°C

Warm Night: When minimum temperature departure 4.5°C to 6.4°C .
Severe Warm Night: When minimum temperature departure $> 6.4^{\circ}\text{C}$.



When minimum temperature of a station $\leq 10^{\circ}\text{C}$ for plains and $\leq 0^{\circ}\text{C}$ for hilly regions.

(a). Based on departure

Cold Wave: Minimum Temperature Departure from normal -4.5°C to -6.4°C .
Severe Cold Wave: Minimum Temperature Departure from normal $\leq -6.5^{\circ}\text{C}$

(b) Based on actual Minimum Temperature (for Plains only)

Cold Wave: When Minimum Temperature is $\leq 4.0^{\circ}\text{C}$
Severe Cold Wave: When Minimum Temperature is $\leq 2.0^{\circ}\text{C}$

(c) For Coastal Stations

When Minimum Temperature departure is $\leq -4.5^{\circ}\text{C}$ & actual Minimum Temperature is $\leq 15^{\circ}\text{C}$



When minimum temperature of a station $\leq 10^{\circ}\text{C}$ for plains and $\leq 0^{\circ}\text{C}$ for hilly regions
Based on departure

Cold Day: Maximum Temperature Departure from normal -4.5°C to -6.4°C .
Severe Cold Day: Maximum Temperature Departure from normal $\leq -6.5^{\circ}\text{C}$



Phenomenon of small droplets suspended in air and the horizontal visibility $< 1\text{km}$

Moderate Fog: When the visibility between 500-200 metres
Dense Fog: when the visibility between 50-200 metres
Very Dense Fog: when the visibility < 50 metres



Sudden electrical discharges manifested by a flash of light (Lightning) and a sharp rumbling sound (thunder)



An ensemble of particles of dust or sand energetically lifted to great heights by a strong and turbulent wind.



Ice deposits on ground

Air temperature $\leq 4^{\circ}\text{C}$ (over Plains)



A strong wind that rises suddenly, lasts for atleast 1 minute.

Moderate: Wind speed 52-61 kmph
Severe: Wind speed 62-87 kmph
Very Severe: Wind speed > 87 kmph



Effect of various waves in the sea over specific area

Rough to very rough: Wind speed 41-62 kmph (22-33 knots) & Wave height 2.5-6 metre
High to very high: Wind speed 63-117 kmph (34-63 knots) & Wave height 6-14 metre
Phenomenal: Wind speed > 117 kmph (> 63 knots) & Wave height > 14 metre



Cyclonic Storm: Wind speed 62-87 kmph (34-47 knots)

Severe Cyclonic Storm: Wind speed 88-117 kmph (48-63 knots)

Very Severe Cyclonic Storm: Wind speed 118-165 kmph (64-89 knots)

Extremely Severe Cyclonic Storm: Wind speed 166-220 kmph (90-119 knots)

Super Cyclone Storm: Wind speed > 220 kmph (> 119 knots)

*Red color warning does not mean "Red Alert" Red color warning means "Take Action"

Forecast and warning for any day is valid from 0830 hours IST of day till 0830 hours IST of next day

For more details kindly visit <https://mausam.imd.gov.in> or contact 011-2434-4599

(Service to the nation since 1875)