

2025-12-03

Time of Issue: 13:17:00 hours IST
(Mid-Day)

ALL INDIA WEATHER SUMMARY AND FORECAST BULLETIN

Significant Weather Features

Weather Forecast and Warnings

- **Tamil Nadu & Puducherry:** Light to moderate rainfall at most places with **heavy to very heavy rainfall at isolated places** over North Coastal Tamil Nadu is very likely on 03rd December and **heavy rainfall** at isolated places on 04th & 05th December, 2025.
- **South Coastal Andhra Pradesh & Rayalaseema:** Light to moderate rainfall at most places with **heavy to very heavy rainfall** at isolated places is very likely on 03rd December, 2025.
- **Kerala:** Light to moderate rainfall at most places with **heavy to very heavy rainfall at isolated places** over Kerala is very likely on 03rd December and **heavy rainfall** at isolated places on 04th December, 2025.
- **South Interior Karnataka:** Light to moderate rainfall at most places with **heavy rainfall** at isolated places is very likely on 03rd & 04th December, 2025.
- Isolated to scattered rainfall with **thunderstorm, lightning** likely over major parts of south peninsular India during next 2 days.

Forecast of minimum temperatures:

- No significant change in minimum temperature likely over many parts of Northwest India for next 5 days, except Uttar Pradesh where gradual fall in minimum temperature by 2-3⁰C during next 3 days and thereafter no significant change.
- Gradual fall in minimum temperature likely by 2-3⁰C over Central & East India during next 3 days and thereafter no significant change.
- No significant change in minimum temperature likely over Northeast India for next 2 days and fall by 2-3⁰C thereafter during subsequent 3 days.

Dense Fog & Cold wave warning Warnings:

- **Cold wave conditions** very likely to prevail in isolated pockets over Punjab, Haryana, Chandigarh on 04th & 05th; over north Rajasthan during 04th-06th; Jharkhand on 06th & 07th December.
- **Dense fog conditions** very likely to prevail during early morning hours in isolated pockets of Assam & Meghalaya, Odisha on 04th & 05th, Nagaland, Manipur, Mizoram & Tripura, Himachal Pradesh during 04th-06th December.

Fisherman Warning:

Fishermen are advised not to venture into the following areas during 03rd December to 08th December:

Arabian Sea:

- Over south Kerala coasts, Comorin, Gulf of Mannar & Lakshadweep areas on 03rd December; Over Lakshadweep and adjoining areas of southeast Arabian sea & off Kerala coast on 04th December.

Bay of Bengal:

- Over southwest & adjoining westcentral Bay of Bengal and along & off Tamil Nadu, Puducherry, south Andhra Pradesh on 03rd December.

***Red color warning does not mean "Red Alert" Red color warning means "Take Action"**

Forecast and warning for any day is valid from 0830 hours IST of day till 0830 hours IST of next day

For more details kindly visit <https://mausam.imd.gov.in> or contact 011-2434-4599

(Service to the nation since 1875)

Main Weather Observations:

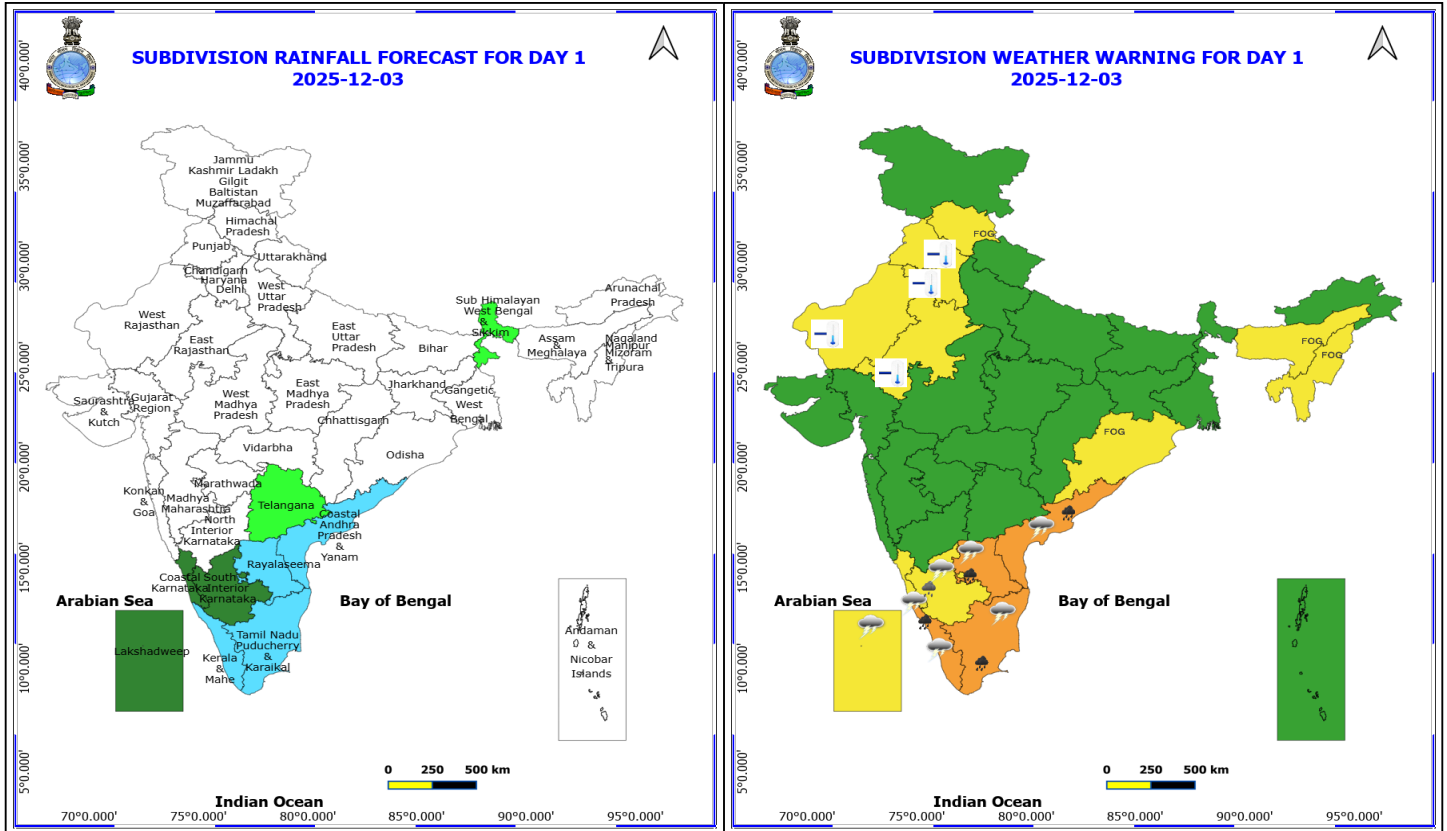
- **Rainfall distribution** (from 0830 hours IST of yesterday to 0830 hours IST of today): **at many places** over Tamil Nadu, Puducherry & Karaikal; **at a few places** over Coastal Andhra Pradesh & Yanam, Rayalaseema and Kerala & Mahe; **at isolated places** over Odisha and South Interior Karnataka; **Dry** over rest of the country.
- **Significant rainfall recorded(in cm)** (from 0830 hours IST of yesterday to 0830 hours IST of today):
Rayalaseema: Chittamur ARG (dist Tirupati) 27, Kota (dist Tirupati) 23, Gudur (dist Tirupati), Satyavedu (dist Tirupati), Tada (dist Tirupati) 9 Each; Sullurpeta (dist Tirupati) 7; **Coastal Andhra Pradesh & Yanam:** Edagali (dist Nellore)- 24, Nellore (dist Spsr Nellore) 9; **Tamil Nadu, Puducherry & Karaikal:** Hindusthan University (dist Chengalpattu) 15; Chetpet (dist Tiruvannamalai) 13; Tirumayam (dist Pudukkottai), Thamarapakkam (dist Tiruvallur) 12 Each; Tiruvarur (dist Tiruvarur), Satyabama Uty ARG (dist Chengalpattu), Thirukalukundram (dist Chengalpattu), Kudimiyamalai (dist Pudukkottai) 11 Each; Kelambakkam (dist Chengalpattu), Mahabalipuram (dist Chengalpattu), Illuppur (dist Pudukkottai), Red Hills (dist Tiruvallur), Ulundurpet (dist Kallakurichi), Vadakuthu (dist Cuddalore) 10 Each; Pollachi (dist Coimbatore), Tondi (dist Ramanathapuram), Cholavaram (dist Tiruvallur), Ponneri (dist Tiruvallur), Tiruvarur AWS (dist Tiruvarur), Gummidipoondi (dist Tiruvallur), Ambathur (dist Chennai), Perambur (dist Chennai), Neivasal Thenpathi (dist Thanjavur) 9 Each; Needamangalam (dist Tiruvarur), Uthukottai (dist Tiruvallur), Rscl Vallam (dist Villupuram) 8 Each; Virudachalam (dist Cuddalore), Karaikal (dist Karaikal), Mannargudi (dist Tiruvarur), Sholinganallur (dist Chennai), Dscl Erayur (dist Kallakurichi), Avadi (dist Tiruvallur), Ranipet AWS (dist Ranipet) 7 Each; **Kerala & Mahe:** Vannamada AWS (dist Palakkad) 7.
- **Heavy Rainfall observed** (from 0830 hours IST of yesterday to 0830 hours IST of today): **Heavy to very heavy rain with extremely heavy rain** at isolated places over Rayalseema, Coastal Andhra Pradesh & Yanam, Tamil Nadu, Puducherry & Karaikal. **Heavy rain** at isolated places over Coastal Andhra Pradesh & Yanam, Rayalaseema and Kerala & Mahe.
- **Cold wave conditions** at isolated places over Madhya Maharashtra, Punjab, Haryana Chandigarh & Delhi.
- **Ground frost** reported at isolated places over Uttarakhand.
- **Fog Condition Observed (at 0830 hours of today):** **Very dense fog (visibility <50 m)** reported in isolated pockets of Odisha; **dense fog (visibility 50-199 m):** reported in isolated pockets of Himachal Pradesh, Meghalaya.
- **Visibility reported (at 0830 hours of today):** **Odisha:** Rourkela (40m); Bhawanipatna (50m); **Himachal Pradesh:** Bilaspur 50 m, Sundernagar 70m, Mandi 100m; **Meghalaya:** Jorhat 150m.
- **Minimum Temperature Departures (as on 03-12-2025):** There are below normal (-1.6°C to -4.0°C) at most places over Haryana; at many places over Jammu-Kashmir-Ladakh, Punjab; at isolated places over West Rajasthan, West Madhya Pradesh, Maharashtra. **The lowest minimum temperature of 2.4 °C is reported at Adampur (Punjab) over the plains of India.**
- **Maximum Temperature Departures (as on 02-12-2025):** The highest maximum temperature of 34.8°C is reported at KARWAR (KARNATAKA).

Meteorological Analysis (Based on 0830 hours IST)

- The **Well Marked Low Pressure** area over North Tamil Nadu-Puducherry coasts and neighbourhood now lay over North Tamilnadu at 0830 hrs IST of today, the 03rd December 2025. The associated cyclonic circulation extends upto 7.6 km above mean sea level. It is very likely to continue to move westwards slowly and weaken into a low-pressure area during next 24 hours.
- The trough from above **Well Marked Low Pressure** area over North Tamil Nadu-Puducherry coasts and neighbourhood to Lakshadweep area across North Interior Tamil Nadu, South Interior Karnataka, north Kerala persists and now extends upto 1.5 km above mean sea level.
- The **Western disturbance** as an **upper air cyclonic circulation** over north Pakistan & adjoining Punjab between 3.1 & 4.5 km above mean sea level persists. However, the trough aloft in middle tropospheric level with its axis at 5.8 km above mean sea level now runs roughly along Long. 74°E to the north of Lat. 32°N.
- The **induced cyclonic circulation** over northwest Uttar Pradesh & neighbourhood and extending upto 1.5 km above mean sea level persists.
- An **upper air cyclonic circulation** lies over Tripura and neighbourhood extends upto 1.5 km above mean sea level.
- A fresh feeble **Western Disturbance** is likely to influence western Himalayan region from 05th December 2025.

Weather Outlook for subsequent 3 days

- Isolated to Scattered rainfall activity over Western Himalayan region, South Kerala, South Tamil Nadu and Islands.



3 December (Day 1)

- **Heavy to Very Heavy Rainfall** very likely at isolated places over Andhra Pradesh, Kerala & Mahe and Tamil Nadu Puducherry & Karaikal.
- **Heavy Rainfall** very likely at isolated places over South Interior Karnataka.
- **Thunderstorm accompanied with lightning & gusty winds(30-40kmph)** very likely at isolated places over Andhra Pradesh.
- **Thunderstorm accompanied with Lightning** very likely at isolated places over Coastal Karnataka, Kerala & Mahe, Lakshadweep, South Interior Karnataka and Tamil Nadu Puducherry & Karaikal.
- **Cold wave conditions** very likely at isolated places over Haryana, Chandigarh & Delhi, Punjab and Rajasthan.
- **Dense Fog** very likely at isolated pockets over Assam & Meghalaya, Himachal Pradesh, Nagaland, Manipur, Mizoram and Tripura and Odisha.

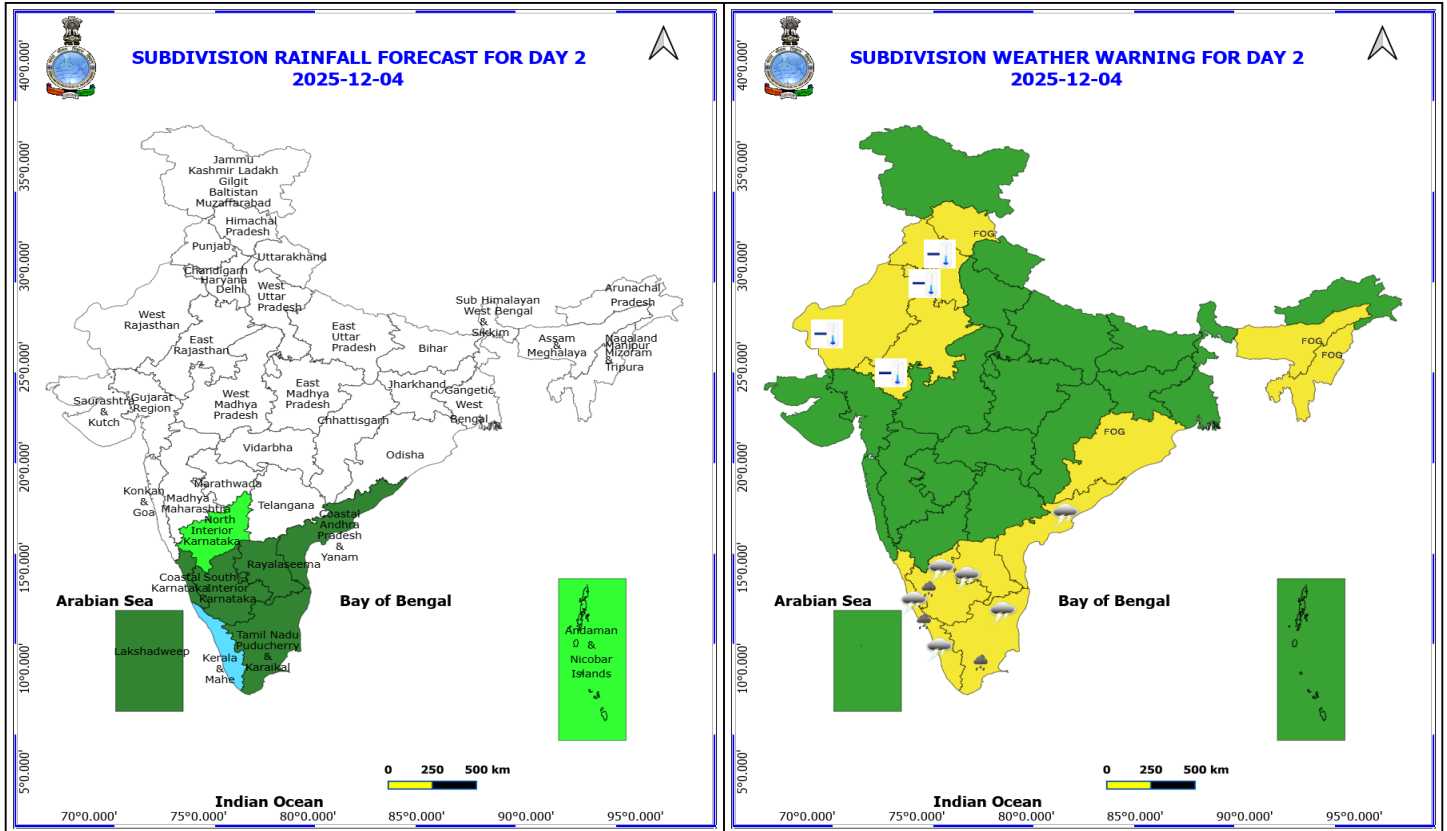
❖ Squally weather with wind speeds reaching 35 kmph to 45 kmph gusting to 55 kmph will prevail over southwest & adjoining westcentral Bay of Bengal and along & off Tamil Nadu, Puducherry, south Andhra Pradesh & south Kerala coasts and Comorin, Gulf of Mannar & Lakshadweep areas.

*Red color warning does not mean "Red Alert" Red color warning means "Take Action"

Forecast and warning for any day is valid from 0830 hours IST of day till 0830 hours IST of next day

For more details kindly visit <https://mausam.imd.gov.in> or contact 011-2434-4599

(Service to the nation since 1875)



4 December (Day 2)

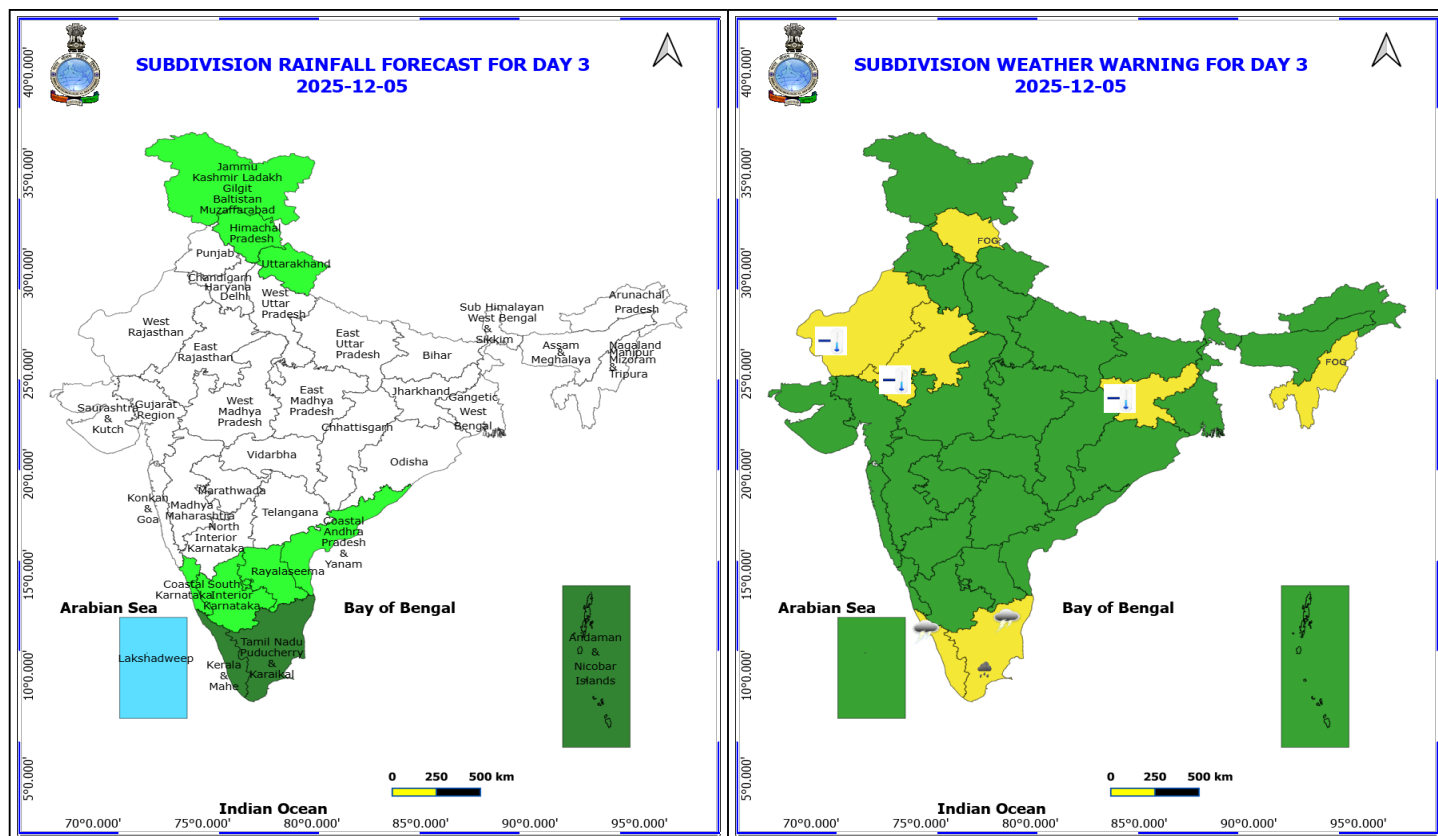
- ❖ **Heavy Rainfall** very likely at isolated places over Kerala & Mahe, South Interior Karnataka and Tamil Nadu Puducherry & Karaikal.
- ❖ **Thunderstorm accompanied with lightning & gusty winds(30-40kmph)** very likely at isolated places over Andhra Pradesh.
- ❖ **Thunderstorm accompanied with Lightning** very likely at isolated places over Coastal Karnataka, Kerala & Mahe, South Interior Karnataka and Tamil Nadu Puducherry & Karaikal.
- ❖ **Cold wave conditions** very likely at isolated places over Haryana, Chandigarh & Delhi, Punjab and Rajasthan.
- ❖ **Dense Fog** very likely at isolated pockets over Assam & Meghalaya, Himachal Pradesh, Nagaland, Manipur, Mizoram and Tripura and Odisha.
- ❖ Squally weather with wind speeds reaching 35 kmph to 45 kmph gusting to 55 kmph will prevail over Lakshadweep and adjoining areas of southeast Arabian sea & off Kerala coast.

*Red color warning does not mean "Red Alert" Red color warning means "Take Action"

Forecast and warning for any day is valid from 0830 hours IST of day till 0830 hours IST of next day

For more details kindly visit <https://mausam.imd.gov.in> or contact 011-2434-4599

(Service to the nation since 1875)



5 December (Day 3)

- ❖ **Heavy Rainfall** very likely at isolated places over Tamil Nadu Puducherry & Karaikal.
- ❖ **Thunderstorm accompanied with Lightning** very likely at isolated places over Kerala & Mahe and Tamil Nadu Puducherry & Karaikal.
- ❖ **Cold wave conditions** very likely at isolated places over Jharkhand and Rajasthan.
- ❖ **Dense Fog** very likely at isolated pockets over Himachal Pradesh and Nagaland, Manipur, Mizoram and Tripura.

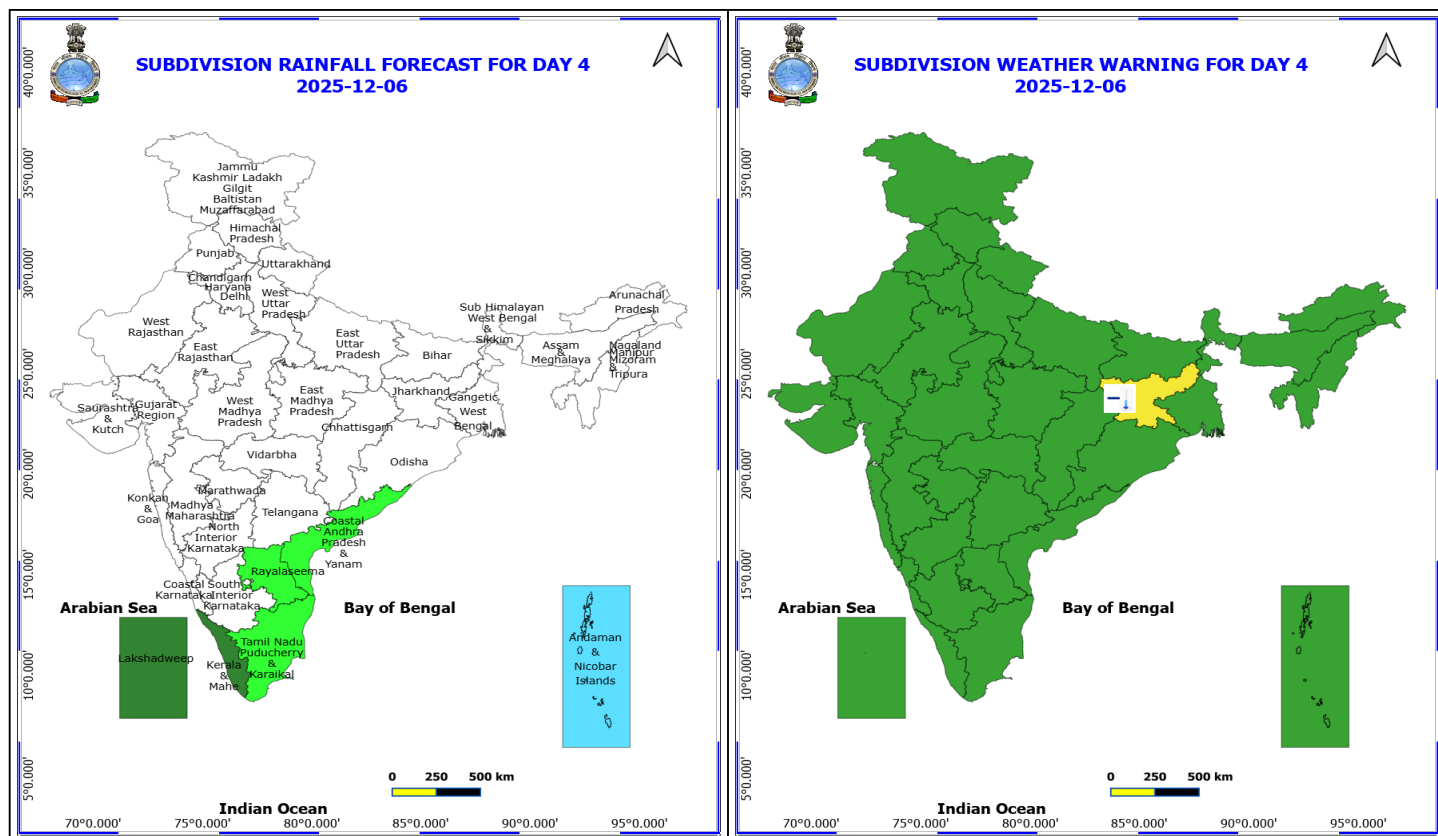
No Fishermen Warning

***Red color warning does not mean "Red Alert" Red color warning means "Take Action"**

Forecast and warning for any day is valid from 0830 hours IST of day till 0830 hours IST of next day

For more details kindly visit <https://mausam.imd.gov.in> or contact 011-2434-4599

(Service to the nation since 1875)



6 December (Day 4)

❖ Cold wave conditions likely at isolated places over Jharkhand.

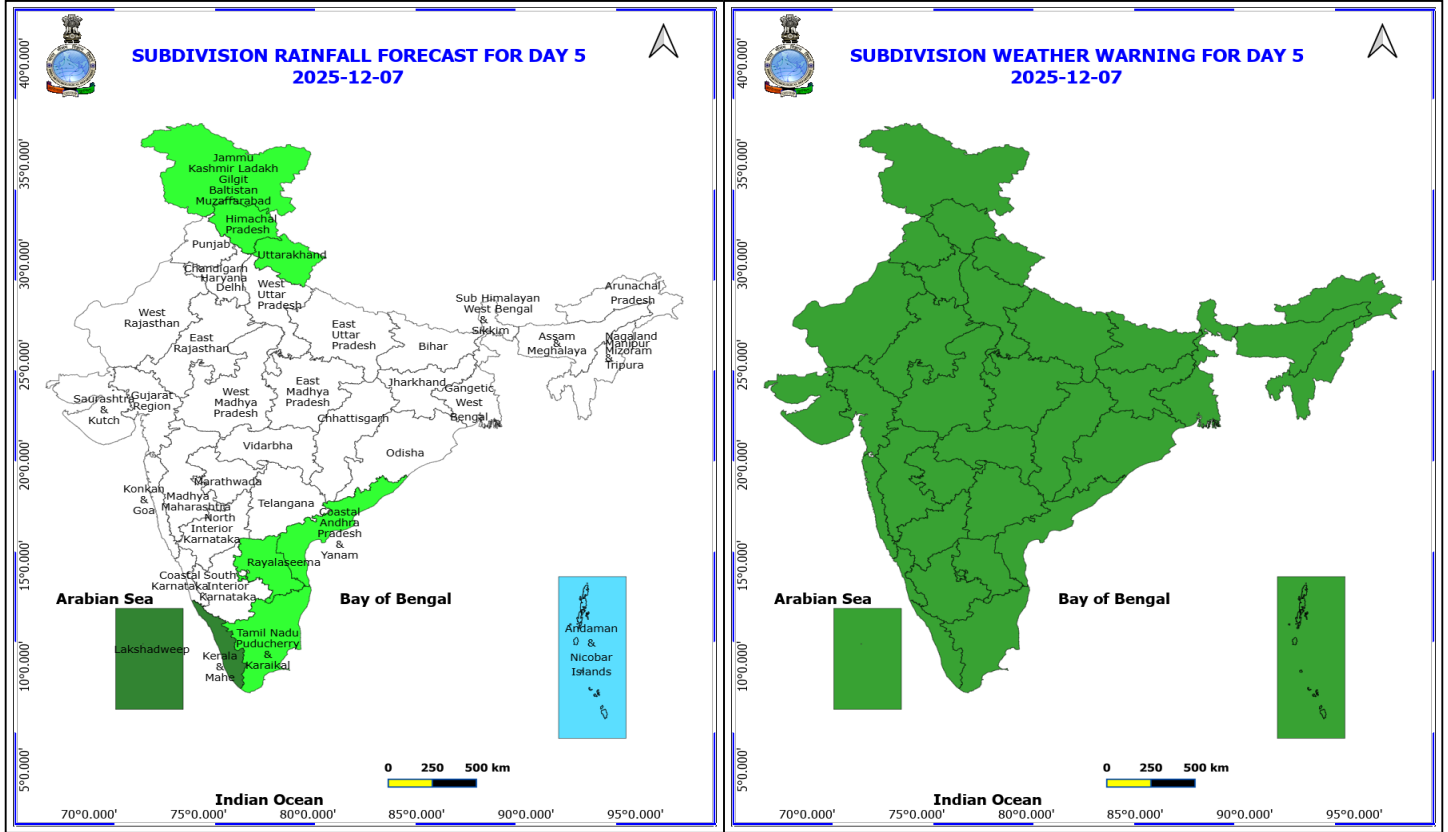
No Fishermen Warning

*Red color warning does not mean "Red Alert" Red color warning means "Take Action"

Forecast and warning for any day is valid from 0830 hours IST of day till 0830 hours IST of next day

For more details kindly visit <https://mausam.imd.gov.in> or contact 011-2434-4599

(Service to the nation since 1875)



7 December (Day 5)

No Warning

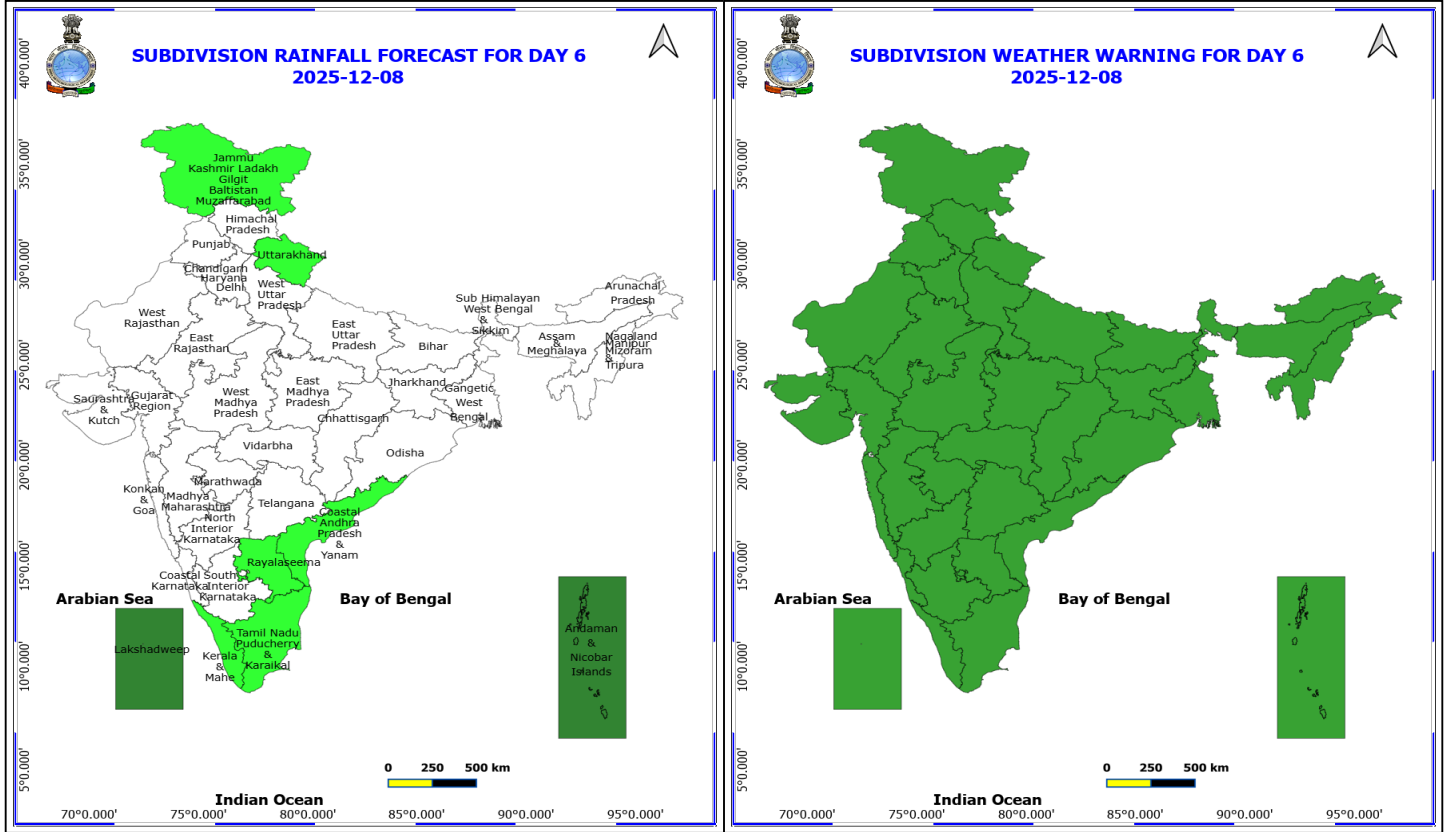
No Fishermen Warning

*Red color warning does not mean "Red Alert" Red color warning means "Take Action"

Forecast and warning for any day is valid from 0830 hours IST of day till 0830 hours IST of next day

For more details kindly visit <https://mausam.imd.gov.in> or contact 011-2434-4599

(Service to the nation since 1875)



8 December (Day 6)

No Warning

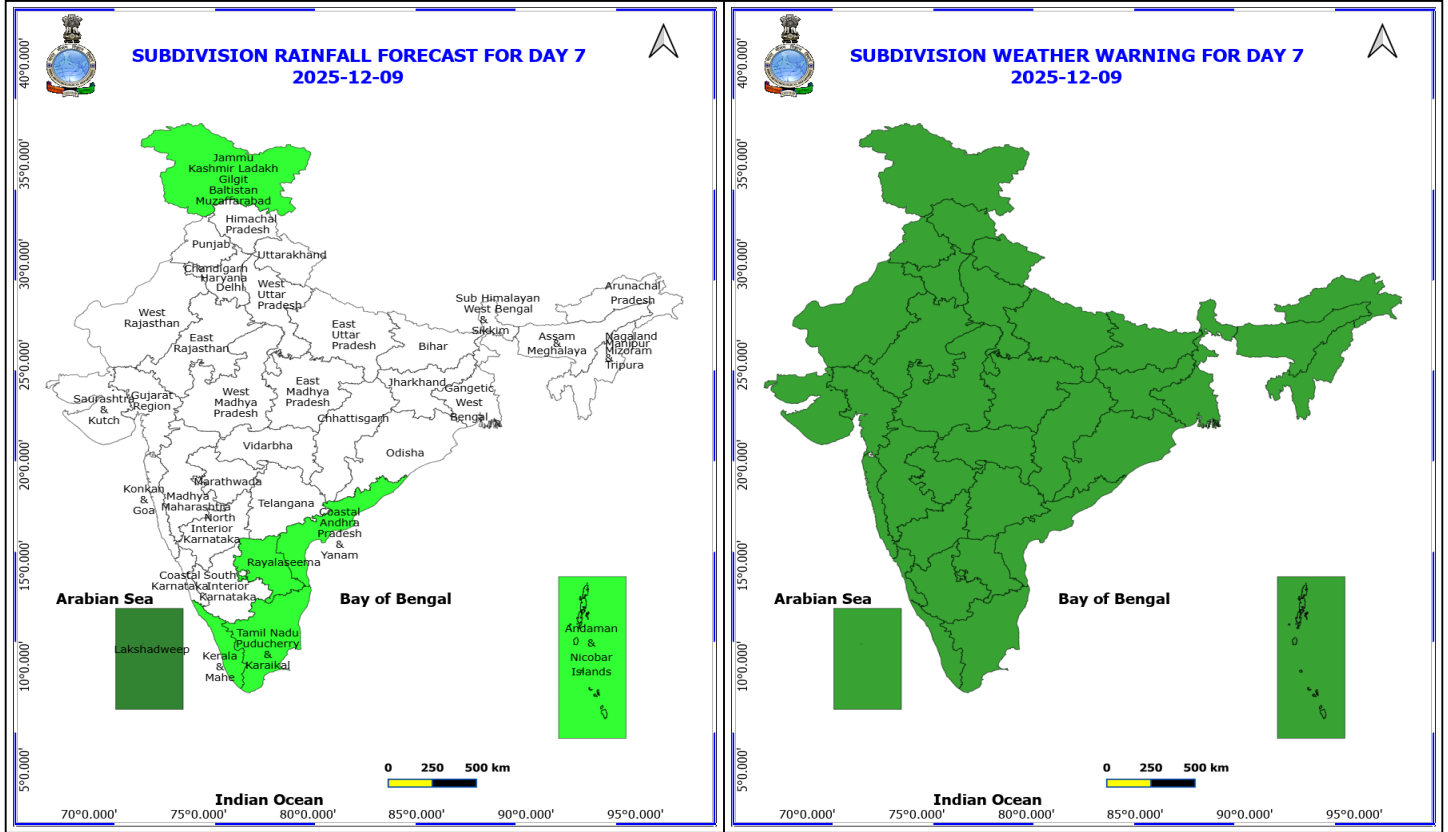
No Fishermen Warning

*Red color warning does not mean "Red Alert" Red color warning means "Take Action"

Forecast and warning for any day is valid from 0830 hours IST of day till 0830 hours IST of next day

For more details kindly visit <https://mausam.imd.gov.in> or contact 011-2434-4599

(Service to the nation since 1875)



9 December (Day 7)

No Warning

No Fishermen Warning

*Red color warning does not mean "Red Alert" Red color warning means "Take Action"

Forecast and warning for any day is valid from 0830 hours IST of day till 0830 hours IST of next day

For more details kindly visit <https://mausam.imd.gov.in> or contact 011-2434-4599

(Service to the nation since 1875)



Table-1

7 Days Rainfall Forecast

S.No.	Subdivision	3- Dec	4- Dec	5- Dec	6- Dec	7- Dec	8- Dec	9- Dec
		Day 1	Day 2	Day 3	Day 4	Day 5	Day 6	Day 7
1	ANDAMAN & NICOBAR ISLANDS	DRY	ISOL	SCT	FWS	FWS	SCT	ISOL
2	ARUNACHAL PRADESH	DRY	DRY	DRY	DRY	DRY	DRY	DRY
3	ASSAM & MEHGHALAYA	DRY	DRY	DRY	DRY	DRY	DRY	DRY
4	N. M. M. & T.	DRY	DRY	DRY	DRY	DRY	DRY	DRY
5	S.H. WEST BENGAL & SIKKIM	ISOL	DRY	DRY	DRY	DRY	DRY	DRY
6	GANGETIC WEST BENGAL	DRY	DRY	DRY	DRY	DRY	DRY	DRY
7	ODISHA	DRY	DRY	DRY	DRY	DRY	DRY	DRY
8	JHARKHAND	DRY	DRY	DRY	DRY	DRY	DRY	DRY
9	BIHAR	DRY	DRY	DRY	DRY	DRY	DRY	DRY
10	EAST UTTAR PRADESH	DRY	DRY	DRY	DRY	DRY	DRY	DRY
11	WEST UTTAR PRADESH	DRY	DRY	DRY	DRY	DRY	DRY	DRY
12	UTTARAKHAND	DRY	DRY	ISOL	DRY	ISOL	ISOL	DRY
13	HARYANA, CHD & DELHI	DRY	DRY	DRY	DRY	DRY	DRY	DRY
14	PUNJAB	DRY	DRY	DRY	DRY	DRY	DRY	DRY
15	HIMACHAL PRADESH	DRY	DRY	ISOL	DRY	ISOL	DRY	DRY
16	JAMMU AND KASHMIR AND LADAKH	DRY	DRY	ISOL	DRY	ISOL	ISOL	ISOL
17	WEST RAJASTHAN	DRY	DRY	DRY	DRY	DRY	DRY	DRY
18	EAST RAJASTHAN	DRY	DRY	DRY	DRY	DRY	DRY	DRY
19	WEST MADHYA PRADESH	DRY	DRY	DRY	DRY	DRY	DRY	DRY
20	EAST MADHYA PRADESH	DRY	DRY	DRY	DRY	DRY	DRY	DRY
21	GUJRAT REGION	DRY	DRY	DRY	DRY	DRY	DRY	DRY
22	SAURASHTRA & KUTCH	DRY	DRY	DRY	DRY	DRY	DRY	DRY
23	KONKAN & GOA	DRY	DRY	DRY	DRY	DRY	DRY	DRY
24	MADHYA MAHARASHTRA	DRY	DRY	DRY	DRY	DRY	DRY	DRY
25	MARATHWADA	DRY	DRY	DRY	DRY	DRY	DRY	DRY
26	VIDARBHA	DRY	DRY	DRY	DRY	DRY	DRY	DRY
27	CHATTISGARH	DRY	DRY	DRY	DRY	DRY	DRY	DRY
28	COASTAL ANDHRA PRADESH	FWS	SCT	ISOL	ISOL	ISOL	ISOL	ISOL
29	TELANGANA	ISOL	DRY	DRY	DRY	DRY	DRY	DRY
30	RAYALASEEMA	FWS	SCT	ISOL	ISOL	ISOL	ISOL	ISOL
31	TAMILNADU & PUDUCHERRY	FWS	SCT	SCT	ISOL	ISOL	ISOL	ISOL
32	COSTAL KARNATAKA	SCT	SCT	ISOL	DRY	DRY	DRY	DRY
33	NORTH INTERIOR KARNATAKA	DRY	ISOL	DRY	DRY	DRY	DRY	DRY
34	SOUTH INTERIOR KARNATAKA	SCT	SCT	ISOL	DRY	DRY	DRY	DRY
35	KERALA	FWS	FWS	SCT	SCT	SCT	ISOL	ISOL
36	LAKSHDWEAP	SCT	SCT	FWS	SCT	SCT	SCT	SCT

Legend	Category	%Stations
WS	Widespread/Most Places	76-100
FWS	Fairly Widespread/Many Places	51-75
SCT	Scattered/ A Few Places	26-50
ISOL	Isolated Places	1-25
DRY	No Rain	0

*Red color warning does not mean "Red Alert" Red color warning means "Take Action"

Forecast and warning for any day is valid from 0830 hours IST of day till 0830 hours IST of next day

For more details kindly visit <https://mausam.imd.gov.in> or contact 011-2434-4599

(Service to the nation since 1875)

Fig. 1: Maximum Temperatures Dated 2025-12-02

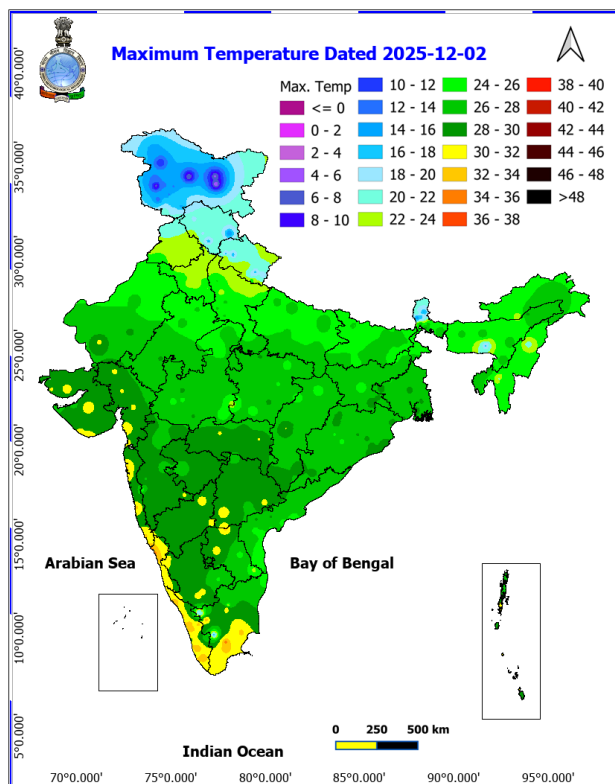


Fig. 2: Departure of Maximum Temp. Dated 2025-12-02

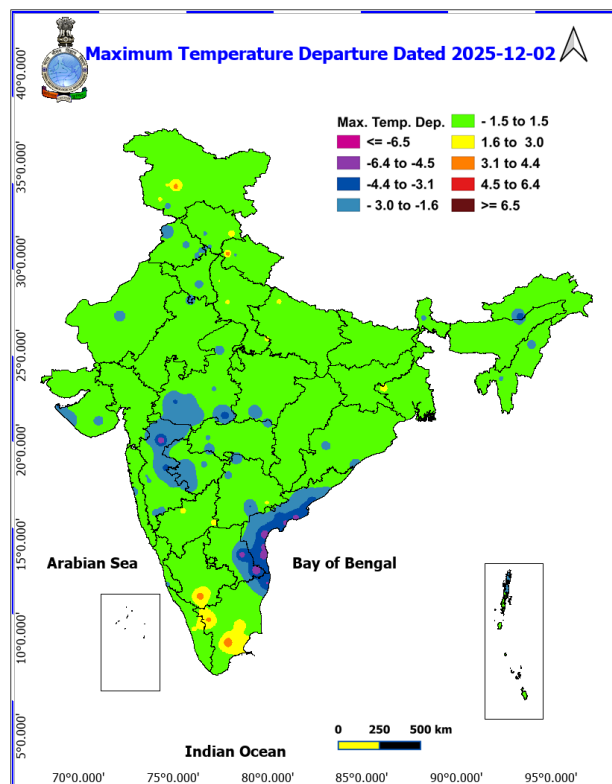


Fig. 3: Minimum Temperatures Dated 2025-12-03

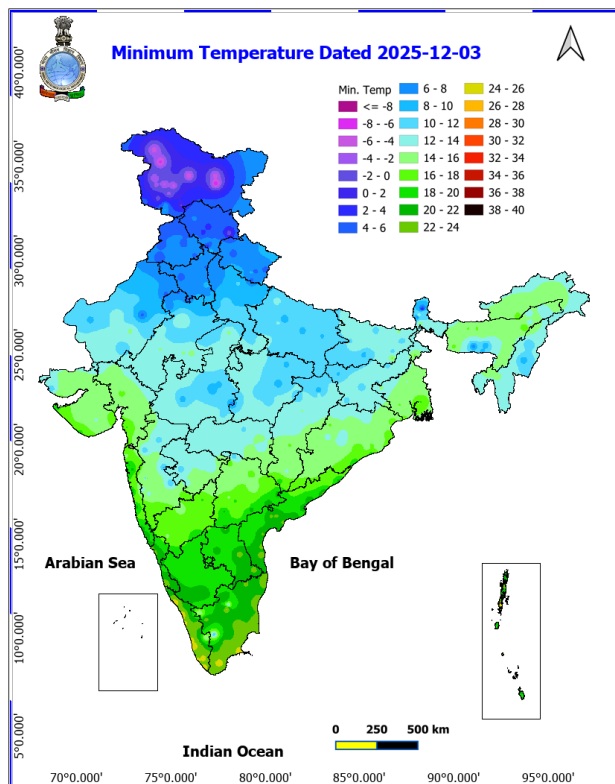
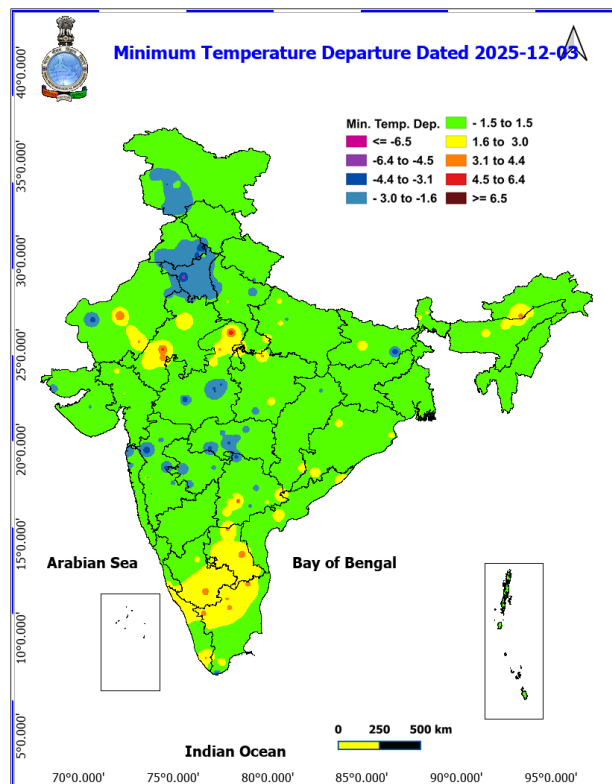
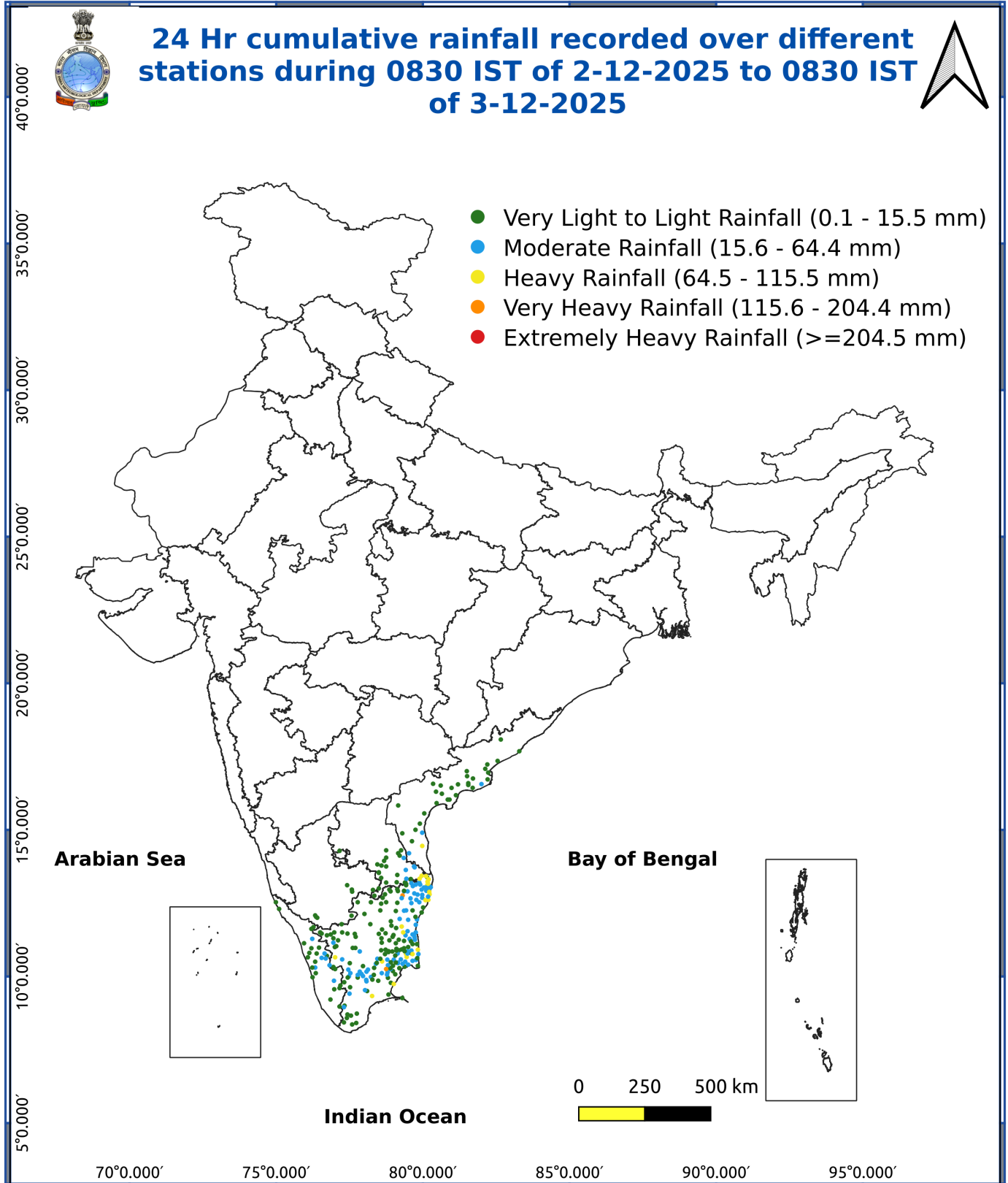


Fig. 4: Departure of Minimum Temp. Dated 2025-12-03





*Red color warning does not mean "Red Alert" Red color warning means "Take Action"

Forecast and warning for any day is valid from 0830 hours IST of day till 0830 hours IST of next day

For more details kindly visit <https://mausam.imd.gov.in> or contact 011-2434-4599

(Service to the nation since 1875)

Impact and Actions

- **Isolated heavy to very heavy rain and strong winds coastal districts of North Tamil Nadu, Puducherry , Coastal Andhra Pradesh, Kerala and Rayalseema on 03rd December.**

Impact Expected:

- Breaking of tree branches, uprooting of small trees. Damage to orchards, horticulture & floriculture, standing crops including banana, papaya and drumstick trees due to inundation, winds and sea spray.
- Damage to Kutcha roads and culverts.
- Inundation/ water logging in low-lying areas in coastal districts due to heavy rainfall and flash flood. Flooding of escape routes and damage to salt pans.
- Riverine flooding in some river catchments. Please refer advisories by Central Water Commission in this regard.
- Occasional reduction in visibility due to heavy rainfall.
- Disruption of traffic due to water logging.
- Localized Landslides/Mudslides.

Action suggested:

- Total suspension of fishing operations.
- People in affected areas to remain indoors.
- Take safe shelters; do not take shelter under trees, as there could be lightning.
- Movement in motor boats unsafe.
- Judicious regulation of offshore/onshore operations
- People are advised to keep a watch on the weather for worsening conditions and be ready to move to safer places accordingly.
- Tourism and recreational activities to be regulated.
- Surface transport and helicopter services to be regulated.

Impact expected due to Cold Wave conditions over Punjab, Haryana, Chandigarh on 04th & 05th; over north Rajasthan during 04th-06th; Jharkhand on 06th & 07th December.

- An increased likelihood of various illnesses like flu, running/ stuffy nose or nosebleed, which usually set in or get aggravated due to prolonged exposure to cold.
- Do not ignore shivering. It is the first sign that the body is losing heat. Get Indoors.
- Frostbite can occur due to prolonged exposure to cold. The skin turns pale, hard and numb and eventually black blisters appear on exposed body parts such as fingers, toes, nose and or earlobes. Severe frostbite needs immediate medical attention and treatment.
- Impact on agriculture, crop, livestock, water supply, transport and power sector at some places.

Action suggested:

- Wear several layers of loose fitting, light weight; warm woollen clothing.
- Cover your head, neck, hands and toes adequately as majority of heat loss occurs through these body parts. Wear several layers of loose fitting, light weight; warm woollen clothing rather than one layer of heavy cloth.
- Eat vitamin-C rich fruits & vegetable and drink sufficient fluids preferably warm fluids to maintain adequate immunity.
- Avoid or limit outdoor activities.
- Keep dry, if wet, change cloths immediately to prevent loss of body heat. Wear insulated/waterproof shoes.
- Warm the affected area of the body slowly with lukewarm water; do not rub the skin vigorously.
- If the affected skin area turns black, immediately consult a doctor.
- Maintain ventilation while using Heaters to avoid inhaling toxic fumes.
- Take safety measures while using electrical and gas heating devices.

***Red color warning does not mean "Red Alert" Red color warning means "Take Action"**

Forecast and warning for any day is valid from 0830 hours IST of day till 0830 hours IST of next day

For more details kindly visit <https://mausam.imd.gov.in> or contact 011-2434-4599

(Service to the nation since 1875)

- Extreme care needed for vulnerable people.
- Seek medical attention as soon as possible for someone suffering from frostbite/ Hypothermia.
- Protect livestock from cold weather.

Agromet advisories for various parts of the country

Agromet advisories for likely impact of Heavy / Heavy to Very Heavy Rainfall

- In **Tamil Nadu**, postpone sowing of groundnut. Drain out excess rain water from the fields of rice, groundnut, sugarcane, cotton, black gram, maize and vegetables and plantations of coconut, banana, arecanut, mango, rubber, cinnamon and black pepper. Strengthen irrigation channels and field bunds in rice to avoid crop lodging. Provide support to banana plants with wooden poles to prevent them from falling.
- In **Andhra Pradesh**, keep the harvested produce of rice, maize, groundnut and cotton to safer places. Postpone picking of cotton, harvesting of rice, sowing of maize, ragi, chickpea and black gram and transplanting of rice. Provide extensive drainage in *rabi* rice nurseries, transplanted rice, Bengal gram, red gram, maize, jowar, vegetables, orchards and already sown crops of ragi, chickpea and black gram.
- In **Kerala**, drain out excess rain water from the fields of rice, vegetables and plantations of banana, coconut, cardamom and black pepper. Carry out propping in banana to prevent falling due to heavy rainfall. Undertake staking for vegetables grown in pandals.

Livestock / Fishery

- Keep the animals inside the shed during heavy rainfall and provide them balanced feed.
- Store feed and fodder in a safe place to prevent spoilage.
- Construct an outlet with proper netting around the ponds to drain out excess water, thereby preventing fish from escaping in case of overflow.

Agromet advisories for likely impact of Thunderstorm / Gusty Winds

- Provide mechanical support to horticultural crops and staking or support to vegetables and young fruit plants / fruit-bearing plants to avoid lodging due to strong winds.

Agromet advisories for likely impact of Cold Waves / Low Temperatures

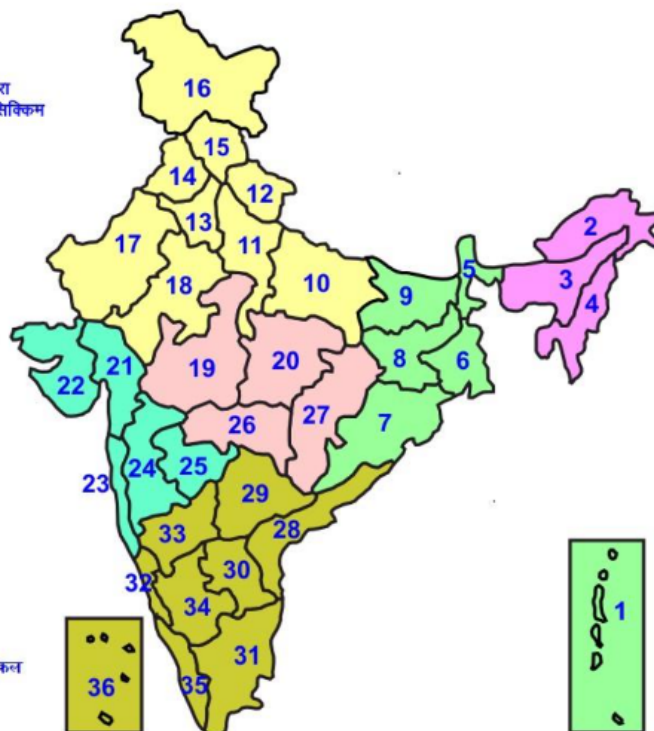
- In **Punjab, Haryana** and **Rajasthan**, apply light and frequent irrigation to the standing crops in the evening to protect the crops from low temperature stress. Use mulching and cover vegetable nurseries and young fruit plants with straw / polythene sheets to maintain optimum soil temperature.

Livestock / Poultry

- Keep cattle inside the sheds during night and provide dry bedding to protect them from cold.
- Keep the chicks warm by providing artificial light in the poultry sheds.

LEGENDS

- 1 अंडमान और निकोबार द्वीप समुह
- 2 अरुणाचल प्रदेश
- 3 असम और मेघालय
- 4 नागालैंड मनीपुर मीजोरम और त्रिपुरा
- 5 उप हिमालय पश्चिम बंगाल एवं सिक्किम
- 6 पश्चिम बंगाल
- 7 ओडिसा
- 8 झारखंड
- 9 बिहार
- 10 पूर्वी उत्तर प्रदेश
- 11 पश्चिम उत्तर प्रदेश
- 12 उत्तराखंड
- 13 हरियाणा चंडीगढ़ एवं दिल्ली
- 14 पंजाब
- 15 हिमाचल प्रदेश
- 16 जम्मू एवं कश्मीर एवं लद्दाख
- 17 पश्चिम राजस्थान
- 18 पूर्वी राजस्थान
- 19 पश्चिम मध्य प्रदेश
- 20 पूर्वी मध्य प्रदेश
- 21 गुजरात क्षेत्र
- 22 सौराष्ट्र एवं कच्छ
- 23 कोंकण एवं गोवा
- 24 मध्य महाराष्ट्र
- 25 मराठावाड़ा
- 26 विदर्भ
- 27 छत्तीसगढ़
- 28 तटीय आंध्र प्रदेश एवं यनम
- 29 तेलंगाना
- 30 रायलसीमा
- 31 तमिलनाडु, पुदुचेरी एवं कराईकल
- 32 तटिय कर्नाटक
- 33 आंतरिक उत्तरी कर्नाटक
- 34 आंतरिक दक्षिणी कर्नाटक
- 35 केरल एवं माहे
- 36 लक्षद्वीप



1. Andaman & Nicobar Islands
2. Arunachal Pradesh
3. Assam & Meghalaya
4. Nagaland, Manipur, Mizoram & Tripura
5. Sub-Himalayan West Bengal & Sikkim
6. Gangetic West Bengal
7. Orissa
8. Jharkhand
9. Bihar
10. East Uttar Pradesh
11. West Uttar Pradesh
12. Uttarakhand
13. Haryana, Chd & Delhi
14. Punjab
15. Himachal Pradesh
16. Jammu & Kashmir and Ladakh
17. West Rajasthan
18. East Rajasthan
19. West Madhya Pradesh
20. East Madhya Pradesh
21. Gujarat
22. Saurashtra
23. Konkan & Goa
24. Madhya Maharashtra
25. Marathwada
26. Vidharbha
27. Chhattisgarh
28. Coastal Andhra Pradesh & Yanam
29. Telangana
30. Rayalaseema
31. Tamilnadu, Puducherry & Karaikal
32. Coastal Karnataka
33. North Interior Karnataka
34. South Interior Karnataka
35. Kerala & Mahe
36. Lakshadweep

SPATIAL DISTRIBUTION (% of Stations reporting)


% Stations	Category	% Stations	Category
76-100	Widespread (WS/Most Places)	26-50	Scattered (SCT/ A Few Places)
51-75	Fairly Widespread (FWS/ Many Places)	1-25	Isolated (ISOL)


Subdivision Colour


- NO WARNING
- WATCH (BE UPDATED)
- ALERT (BE PREPARED TO TAKE ACTION)
- WARNING (TAKE ACTION)


Probabilistic Forecast


Terms	Probability of Occurrence (%)
Unlikely	< 25
Likely	25 - 50
Very Likely	50 - 75
Most Likely	> 75


-  Heavy Rain


 Thunderstorm & Lightning


 Strong surface winds


 Cold Wave


 Hot & Humid


 Very Heavy Rain


 Hailstorm


 Heat Wave


 Cold Day


 Extremely Heavy Rain


 Dust Storm


 Hot Day

 Ground Frost

 Heavy Snow

 Dust Raising Winds

 Warm Night

 Fog

*Red color warning does not mean "Red Alert" Red color warning means "Take Action"

Forecast and warning for any day is valid from 0830 hours IST of day till 0830 hours IST of next day

For more details kindly visit <https://mausam.imd.gov.in> or contact 011-2434-4599

(Service to the nation since 1875)

LEGENDS

WARNING

WARNING (TAKE ACTION)
ALERT (BE PREPARED)
WATCH (BE UPDATED)
NO WARNING (NO ACTION)

Probabilistic Forecast

Terms	Probability of Occurrence (%)
Unlikely	< 25
Likely	25 - 50
Very Likely	50 - 75
Most Likely	> 75



Heavy: 64.5 to 115.5 mm/cm *
Very Heavy: 115.6 to 204.4 mm/cm *
Extremely Heavy: > 204.4 mm/cm *



When maximum temperature of a station reaches $\geq 40^{\circ}\text{C}$ for plains and $\geq 30^{\circ}\text{C}$ for hilly regions
(a) Based on Departure from normal

Heat Wave: Maximum Temperature Departure from normal 4.5°C to 6.4°C .
Severe Heat Wave: Maximum Temperature Departure from normal $\geq 6.5^{\circ}\text{C}$

(b). Based on Actual maximum temperature

Heat Wave: When actual maximum temperature $\geq 45^{\circ}\text{C}$.
Severe Heat Wave: When actual maximum temperature $\geq 47^{\circ}\text{C}$

(c). Criteria for heat wave for coastal stations

When maximum temperature departure is $> 4.5^{\circ}\text{C}$ from normal. Heat Wave may be described provided maximum temperature $\geq 37^{\circ}\text{C}$



When maximum temperature remains 40°C

Warm Night: When minimum temperature departure 4.5°C to 6.4°C .
Severe Warm Night: When minimum temperature departure $> 6.4^{\circ}\text{C}$.



When minimum temperature of a station $\leq 10^{\circ}\text{C}$ for plains and $\leq 0^{\circ}\text{C}$ for hilly regions.

(a). Based on departure

Cold Wave: Minimum Temperature Departure from normal -4.5°C to -6.4°C .
Severe Cold Wave: Minimum Temperature Departure from normal $\leq -6.5^{\circ}\text{C}$

(b) Based on actual Minimum Temperature (for Plains only)

Cold Wave: When Minimum Temperature is $\leq 4.0^{\circ}\text{C}$
Severe Cold Wave: When Minimum Temperature is $\leq 2.0^{\circ}\text{C}$

(c) For Coastal Stations

When Minimum Temperature departure is $\leq -4.5^{\circ}\text{C}$ & actual Minimum Temperature is $\leq 15^{\circ}\text{C}$



When minimum temperature of a station $\leq 10^{\circ}\text{C}$ for plains and $\leq 0^{\circ}\text{C}$ for hilly regions
Based on departure

Cold Day: Maximum Temperature Departure from normal -4.5°C to -6.4°C .
Severe Cold Day: Maximum Temperature Departure from normal $\leq -6.5^{\circ}\text{C}$



Phenomenon of small droplets suspended in air and the horizontal visibility $< 1\text{km}$

Moderate Fog: When the visibility between 500-200 metres
Dense Fog: when the visibility between 50-200 metres
Very Dense Fog: when the visibility < 50 metres



Sudden electrical discharges manifested by a flash of light (Lightning) and a sharp rumbling sound (thunder)



An ensemble of particles of dust or sand energetically lifted to great heights by a strong and turbulent wind.



Ice deposits on ground

Air temperature $\leq 4^{\circ}\text{C}$ (over Plains)



A strong wind that rises suddenly, lasts for at least 1 minute.

Moderate: Wind speed 52-61 kmph
Severe: Wind speed 62-87 kmph
Very Severe: Wind speed > 87 kmph



Effect of various waves in the sea over specific area

Rough to very rough: Wind speed 41-62 kmph (22-33 knots) & Wave height 2.5-6 metre
High to very high: Wind speed 63-117 kmph (34-63 knots) & Wave height 6-14 metre
Phenomenal: Wind speed > 117 kmph (> 63 knots) & Wave height > 14 metre



Cyclonic Storm: Wind speed 62-87 kmph (34-47 knots)

Severe Cyclonic Storm: Wind speed 88-117 kmph (48-63 knots)
Very Severe Cyclonic Storm: Wind speed 118-165 kmph (64-89 knots)
Extremely Severe Cyclonic Storm: Wind speed 166-220 kmph (90-119 knots)
Super Cyclone Storm: Wind speed > 220 kmph (> 119 knots)

*Red color warning does not mean "Red Alert" Red color warning means "Take Action"

Forecast and warning for any day is valid from 0830 hours IST of day till 0830 hours IST of next day

For more details kindly visit <https://mausam.imd.gov.in> or contact 011-2434-4599

(Service to the nation since 1875)