

**Saturday, November 2, 2024**  
**Time of Issue: 1315 hours IST**  
**(MID-DAY)**

## ALL INDIA WEATHER SUMMARY AND FORECAST BULLETIN

### Significant Weather Features:

#### Weather Systems:

- ❖ A **cyclonic circulation** lies over south Tamil Nadu coast & adjoining Sri Lanka in middle tropospheric levels.
- ❖ A trough runs from the above cyclonic circulation over south Tamil Nadu coast to coastal Karnataka in lower tropospheric levels.

#### i. Forecast & Warnings (upto 7 days):

- ✓ Light to moderate rainfall at a few places accompanied with isolated thunderstorm and lightning very likely over Tamil Nadu, Puducherry & Karaikal, Kerala & Mahe during 02<sup>nd</sup>-04<sup>th</sup> and over South Interior Karnataka and Lakshadweep on 02<sup>nd</sup> November.
- ✓ **Isolated heavy rainfall** also very likely over Tamil Nadu, Puducherry & Karaikal and Kerala & Mahe on 02<sup>nd</sup> & 03<sup>rd</sup> and over Andaman & Nicobar Islands on 05<sup>th</sup> November.

#### ii. Temperature conditions and Forecast

##### Temperature Conditions during past 24 hours till 0830 hours IST of today

There is a fall in both Maximum & Minimum Temperatures over plains of North India by about 2-3°C during past 24 hours. Minimum Temperatures are above normal by 2-6°C over parts of North and central India.

##### Forecast of temperature

- ✓ Gradual fall in minimum temperature over Northwest & East India by 2-3°C during 03<sup>rd</sup>-07<sup>th</sup> November.

#### iii. Weather forecast over Delhi/NCR during 02<sup>nd</sup> November to 05<sup>th</sup> November 2024

##### Past Weather:

Currently both Maximum and Minimum temperature over Delhi are at the range of 32-34°C and 14-19°C respectively. These are above normal by 2 - 3°C. Mainly clear sky condition with predominant surface wind from Northwest/Southwest directions with wind speed reaching 08 - 18kmph prevailed during daytime and calm winds prevailed during night.

##### Weather Forecast:

**02.11.2024:** Mainly clear sky. The predominant surface wind is likely to be from Northeast directions with wind speed 06 - 08 kmph till evening. It would increase thereafter becoming less than 10 kmph from Northeast directions during night. Smog/ mist is likely in the night.

**03.11.2024:** Mainly clear sky. The predominant surface wind is likely to be from Southeast directions with wind speed upto 08 kmph during morning hours. Smog/ mist in the morning. The wind speed will gradually increase becoming 08 - 10 kmph from Southeast directions during afternoon. It will decrease thereafter becoming less than 08 kmph from East directions during evening and night. Smog/ mist is likely in the night.

**04.11.2024:** Mainly clear sky. The predominant surface wind is likely to be from Southeast directions with wind speed upto 08 kmph during morning hours. Smog/ mist in the morning. The wind speed will increase becoming 08- 10 kmph from Southeast directions during afternoon. It will gradually increase becoming 08 - 12 kmph from East directions during evening and night. Smog/shallow fog/ mist is likely in the night.

**05.11.2024:** Mainly clear sky. The predominant surface wind is likely to be from Southeast direction with wind speed upto 10 - 15 kmph during morning hours. Smog/ mist in the morning. The wind speed will decrease thereafter becoming 06- 12 kmph from Southeast directions during afternoon. It will gradually decrease becoming 05 - 10 kmph from East directions during evening and night. Smog/shallow fog/ mist is likely in the night.

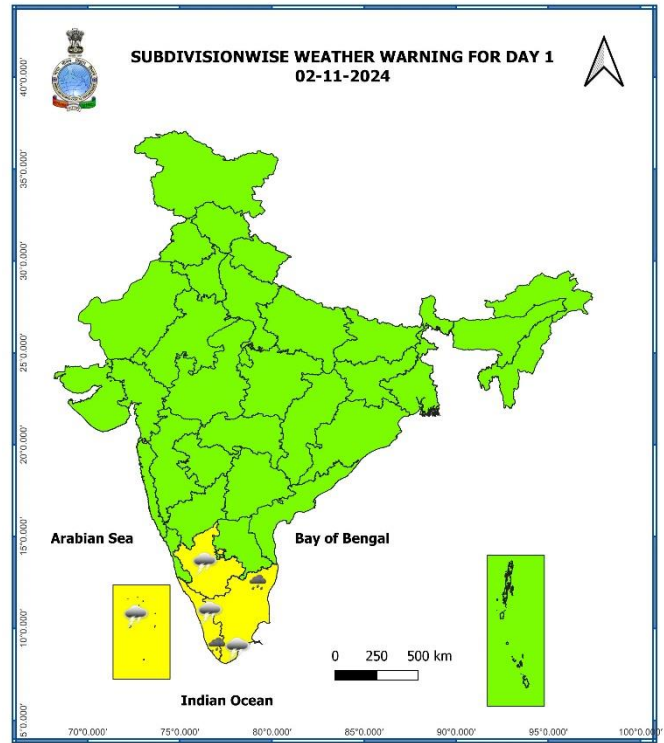
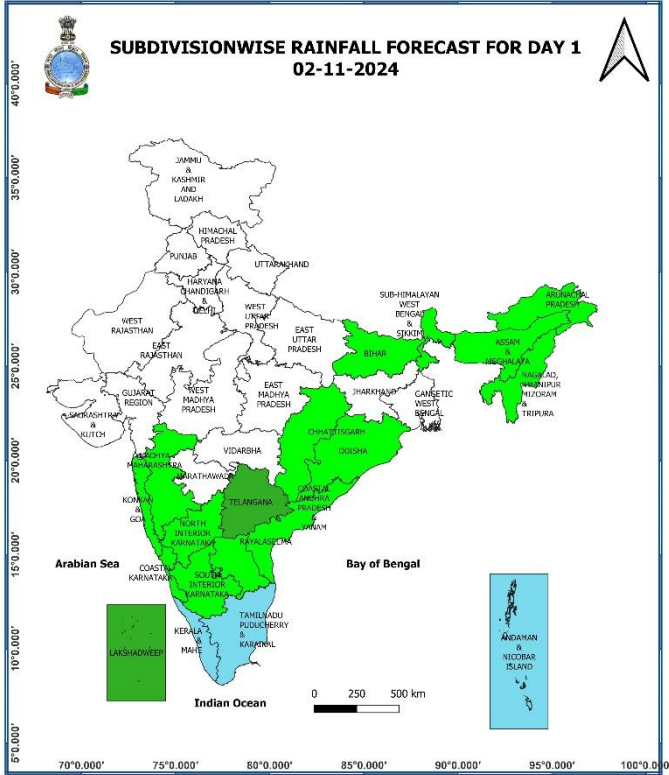
## Main Weather Observations:

- ❖ **Rainfall distribution** (from 0830 hours IST of yesterday to 0830 hours IST of today): **at most places** over Andaman & Nicobar Islands; **at many places** over Kerala & Mahe, Coastal Karnataka; **at a few places** over Konkan & Goa, Tamil Nadu, Puducherry & Karaikal, Telangana, South Interior Karnataka; **at isolated places** over Chhattisgarh, Sub-Himalayan West Bengal & Sikkim, Bihar, Odisha, Arunachal Pradesh, Assam & Meghalaya, Nagaland, Manipur, Mizoram & Tripura, Madhya Maharashtra, Marathwada, Coastal Andhra Pradesh & Yanam, North Interior Karnataka.
- ❖ **Heavy rainfall recorded** (from 0830 hours IST of yesterday to 0830 hours IST of today): **Heavy rainfall** at isolated places over Tamil Nadu, Puducherry & Karaikal.
- ❖ **Significant amount of rainfall** (from 0830 hours IST of yesterday to 0830 hours IST of today) (in cm): **Tamil Nadu, Puducherry & Karaikal:** Periyar (dist Theni), Ayikudi (dist Tenkasi) 7, Ramanathapuram (dist Ramanathapuram) 6 each, Chinnakalar (dist Coimbatore), RSCL-2 Kedar (dist Villupuram) 5 each, Manjalar (dist Theni), Ramnadu KVK AWS (dist Ramanathapuram), Kannadaian Anicut (dist Tirunelveli), Zone 01 Thiruvottiyur (dist Chennai), Periyapatti (dist Madurai), Kadaladi (dist Ramanathapuram), Natham (dist Dindigul), Natham AWS (dist Dindigul) 4 each, **Odisha:** Gumma (Gajapati) 3, Rayagada (Rayagada) 2, Rayagada Pto (Rayagada) 2, Kotpad (Koraput) 2, Paralakhemundi (Gajapati) 1, Bari (Jajpur) 1, Nuagada (Gajapati) 1, Mahanga (Cuttack) 1, R.udaigiri (Gajapati) 1, **Telangana:** Aswaraopeta (dist B. Kothagudem) 5, Esci\_gachibowli(a) (dist Rangareddy) 4, Nirmal (dist Nirmal) 3, Bhuvanagiri (dist Y. Bhuvanagiri) 3, Kotapalle (dist Mancherial) 3, **Coastal Andhra Pradesh:** Chintur (dist Alluri Sitharamaraju) 4, Velairpad (dist Eluru) 3, **South Interior Karnataka:** Napoklu (dist Kodagu) 4, Kammardi (dist Chikkamagaluru) 3, Kalasa (dist Chikkamagaluru) 3, Maddur (dist Mandya) 3.
- ❖ **Minimum Temperature Departures (as on 02-11-2024):** Minimum temperatures are **appreciably above normal (3.1°C to 5.0°C)** at a few places over Madhya Maharashtra; at isolated places over Punjab, Rajasthan, Madhya Pradesh, Telangana, North Interior Karnataka, Odisha, Gangetic West Bengal, Assam & Meghalaya, Marathwada; **above normal (1.6°C to 3.0°C)** at a few places over Jammu-Kashmir-Ladakh-Gilgit-Baltistan-Muzaffarabad, East Uttar Pradesh, Coastal Andhra Pradesh & Yanam; at isolated places over Himachal Pradesh, Uttarakhand, West Uttar Pradesh, Bihar, Jharkhand, Sub-Himalayan West Bengal & Sikkim, Chhattisgarh, Vidarbha, Rayalaseema, Tamil Nadu, Puducherry & Karaikal, Kerala & Mahe, Konkan & Goa, Saurashtra & Kutch, Nagaland, Manipur, Mizoram & Tripura, North Interior Karnataka. Today, **the lowest minimum temperature of 13.9°C** is reported at **Delhi (Ridge)** over the plains of the country. (Fig.4)
- ❖ **Maximum Temperature Departures (as on 01-11-2024):** Maximum temperatures were **markedly above normal (5.1°C or more)** at isolated places over Chhattisgarh and Himachal Pradesh; **appreciably above normal (3.1°C to 5.0°C)** at a few places over Vidarbha and East Madhya Pradesh; at isolated places over Jammu-Kashmir-Ladakh-Gilgit-Baltistan-Muzaffarabad, East Uttar Pradesh, Gangetic West Bengal, Jharkhand, Odisha, East Rajasthan, West Madhya Pradesh, Saurashtra & Kutch and Coastal Andhra Pradesh & Yanam; **above normal (1.6°C to 3.0°C)** at most places over Punjab; at many places over West Rajasthan and Uttarakhand; at a few places over West Uttar Pradesh, Gujarat Region and Kerala & Mahe; at isolated places over Haryana-Chandigarh-Delhi, Bihar, Marathwada, Telangana, Rayalaseema, Tamil Nadu, Puducherry & Karaikal. These were **appreciably below normal (-5.0°C to -3.1°C)** at isolated places over Sub-Himalayan West Bengal & Sikkim; **below normal (-3.0°C to -1.6°C)** at isolated places over Assam and near normal over rest parts of the country. Yesterday, **the highest maximum temperature of 39.8°C** was reported at Rajkot (**Gujarat**) over the country. (Fig. 2)

## Meteorological Analysis (Based on 0830 hours IST)

- ❖ A cyclonic circulation lies over central Pakistan & adjoining northwest Rajasthan at 1.5 km above mean sea level.
- ❖ An east-west trough runs from northwest Bangladesh to Manipur and extends upto 3.1 km above mean sea level.
- ❖ The **cyclonic circulation** over Gulf of Mannar & neighbourhood now lies over south Tamil Nadu coast & adjoining Sri Lanka and extends upto 5.8 km above mean sea level.
- ❖ A trough runs from the above cyclonic circulation over south Tamil Nadu coast & adjoining Sri Lanka to coastal Karnataka at 0.9 km above mean sea level.
- ❖ The **cyclonic circulation** over northeast Assam between 3.1 & 4.5 km above mean sea level has become less marked.
- ❖ The **cyclonic circulation** over west Assam extending upto 0.9 km above mean sea level has become less marked.

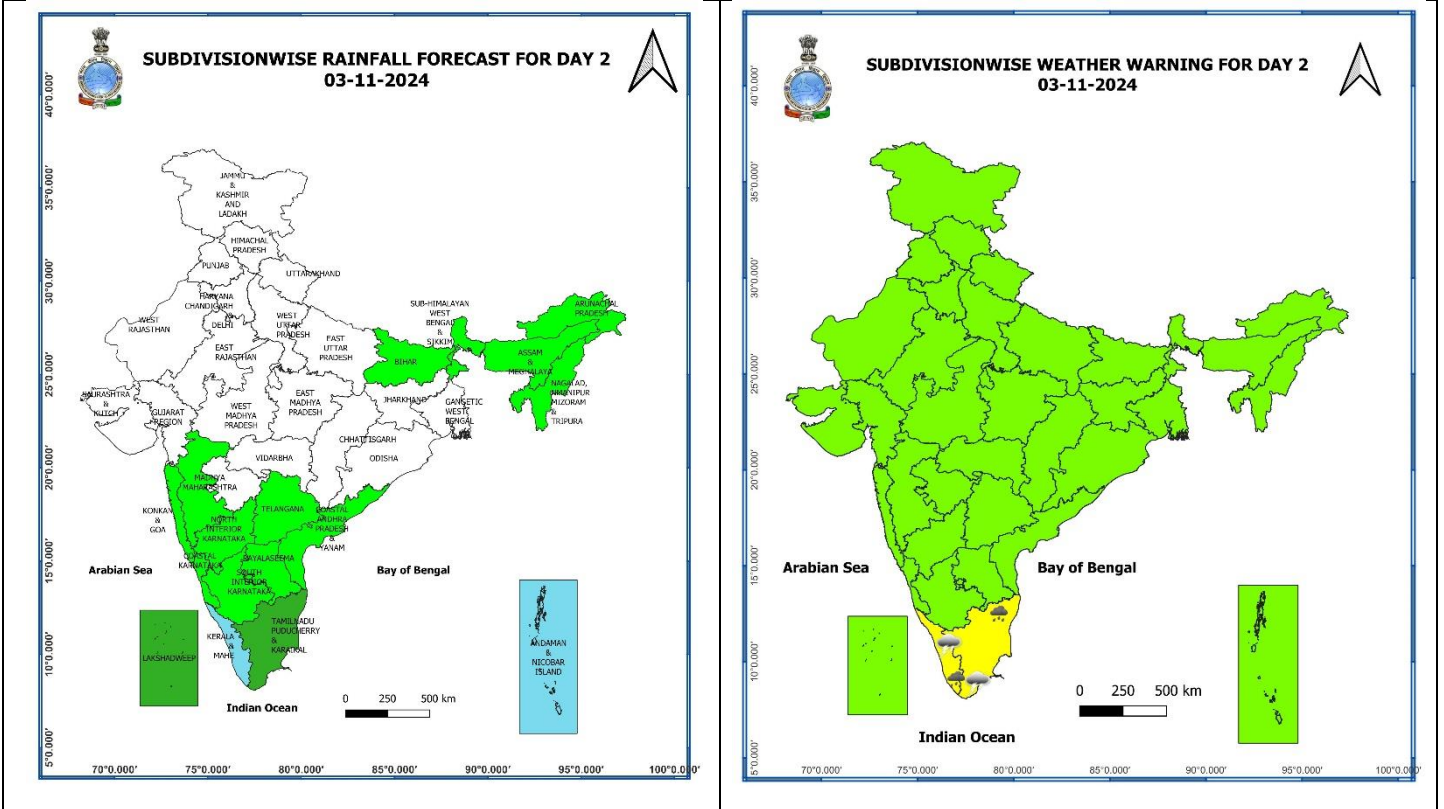
**Weather Forecast & Warnings for next 7 days (Upto 0830 hours IST of 09<sup>th</sup> November, 2024)**



**02 November (Day 1):**

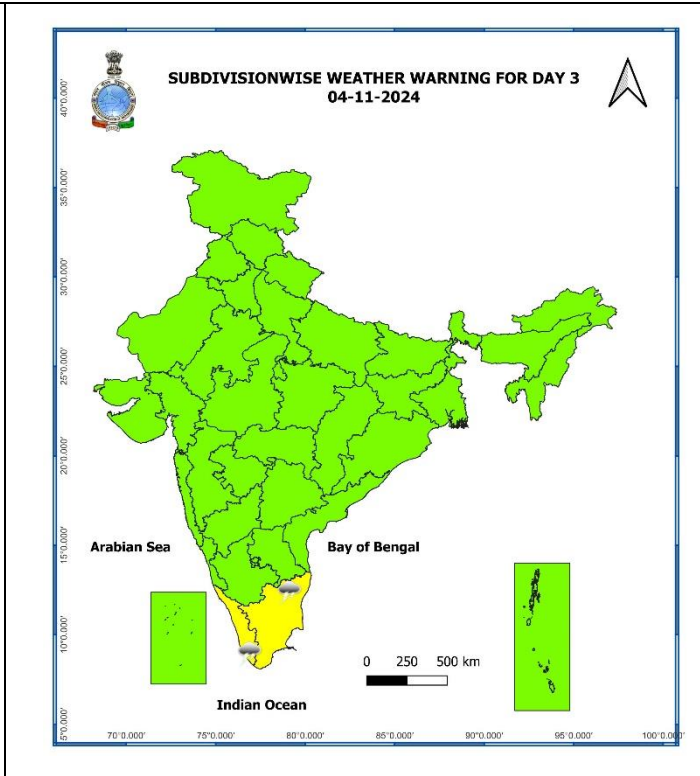
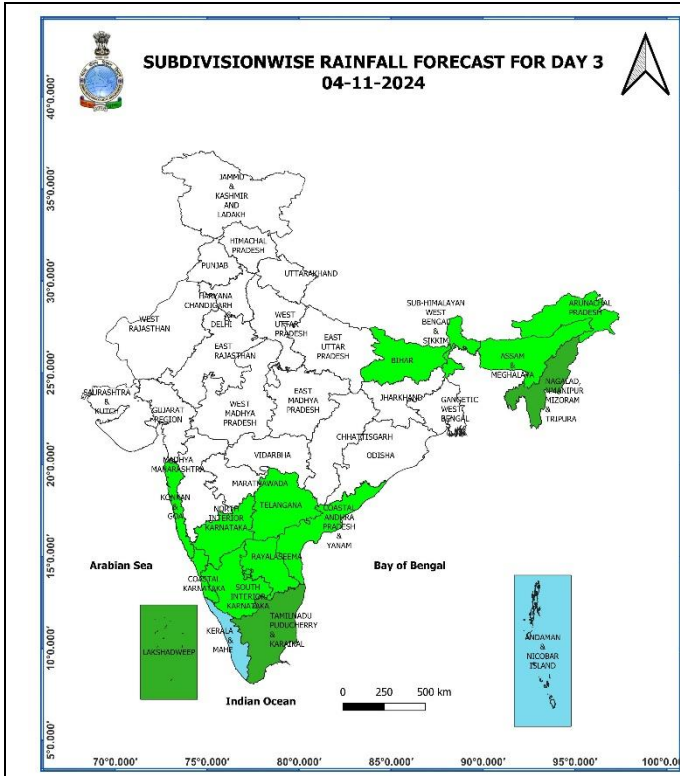
- ❖ **Heavy rainfall ( $\geq 7$  cm)** very likely at isolated places over Tamil Nadu, Puducherry & Karaikal, Kerala & Mahe.
- ❖ **Thunderstorm accompanied with lightning** very likely at isolated places over Tamil Nadu, Puducherry & Karaikal, Kerala & Mahe, Lakshadweep, Coastal Andhra Pradesh & Yanam, Rayalaseema, South Interior Karnataka.
- ❖ **Squally weather with wind speed 35 kmph to 45 kmph gusting to 55 kmph** likely over along and off **south** Kerala coast, Comorin area. Fishermen are advised not to venture into these areas.





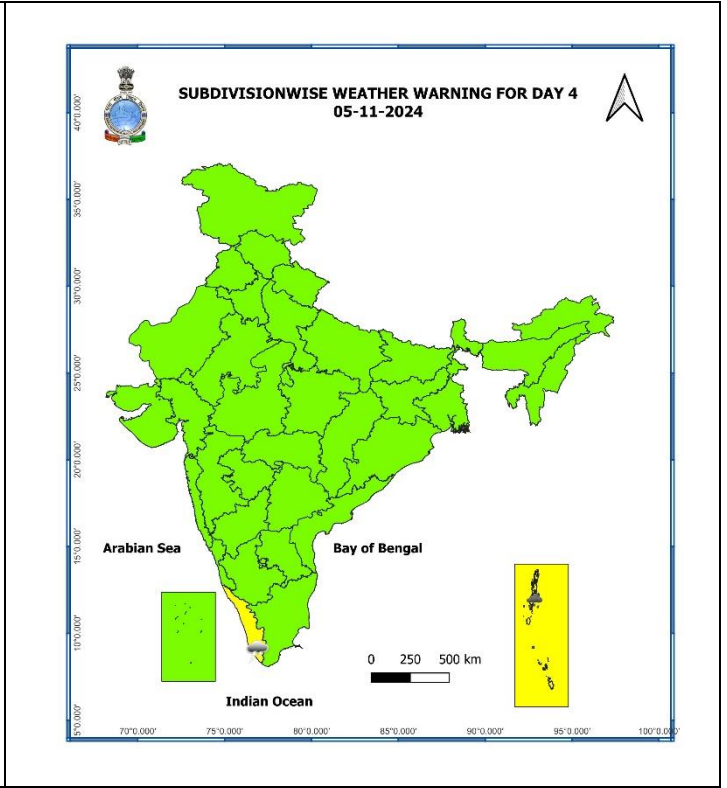
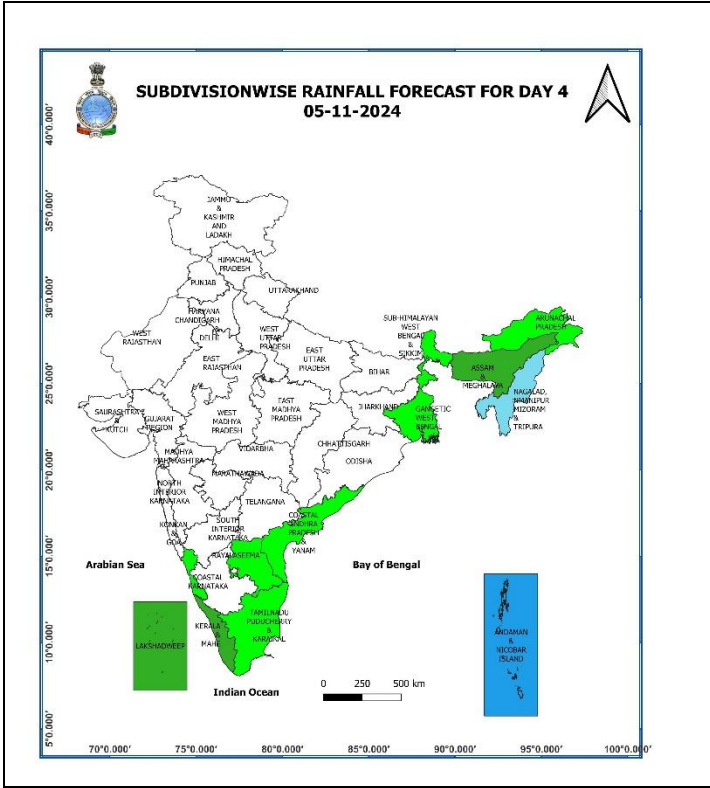
**03 November (Day 2):**

- ❖ **Heavy rainfall ( $\geq 7$  cm)** very likely at isolated places over Tamil Nadu, Puducherry & Karaikal, Kerala & Mahe.
- ❖ **Thunderstorm accompanied with lightning** very likely at isolated places over Kerala & Mahe, Tamil Nadu, Puducherry & Karaikal.



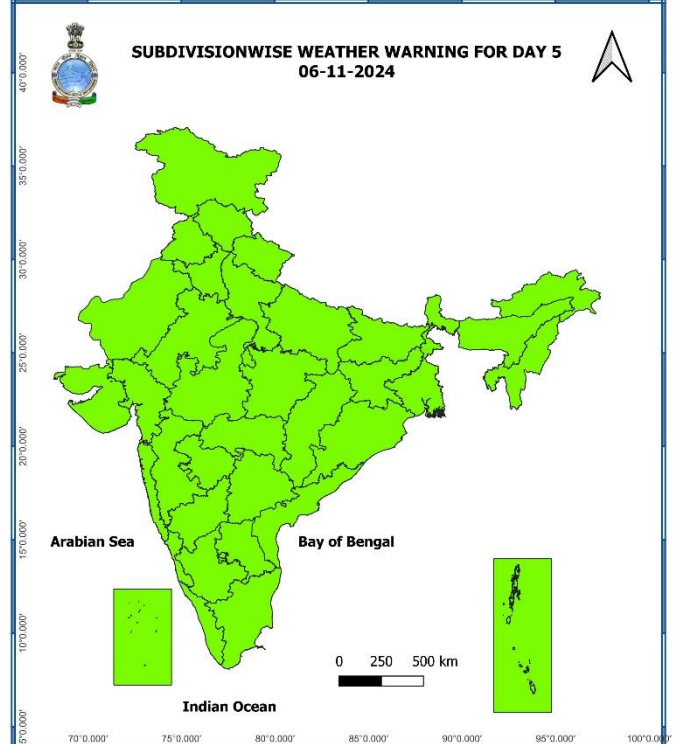
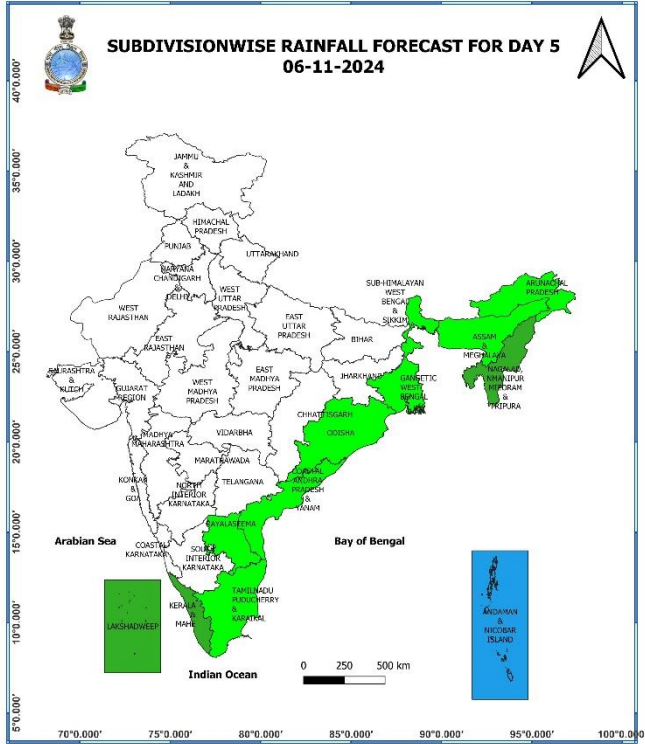
### 04 November (Day 3):

- ❖ **Thunderstorm accompanied with lightning** very likely at isolated places over Kerala & Mahe, Tamil Nadu, Puducherry & Karaikal.



**05 November (Day 4):**

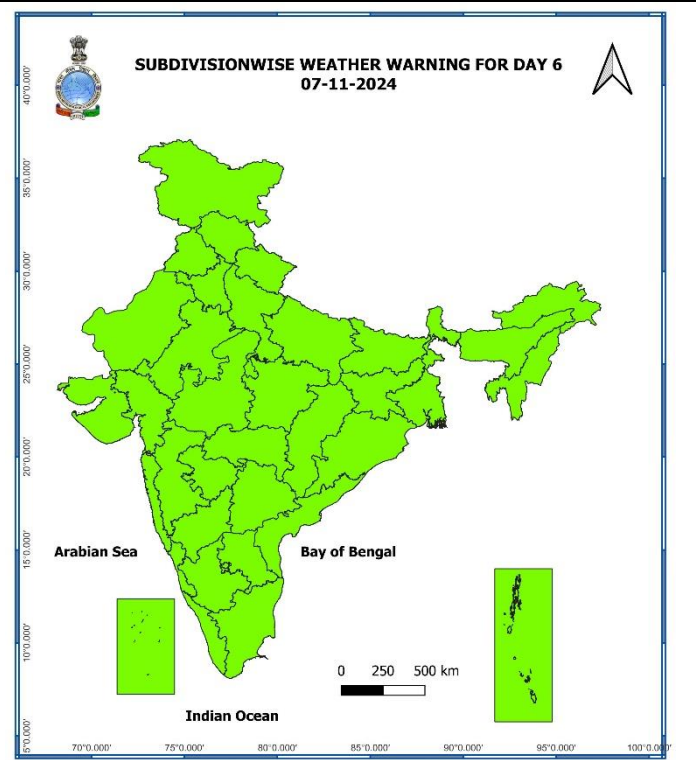
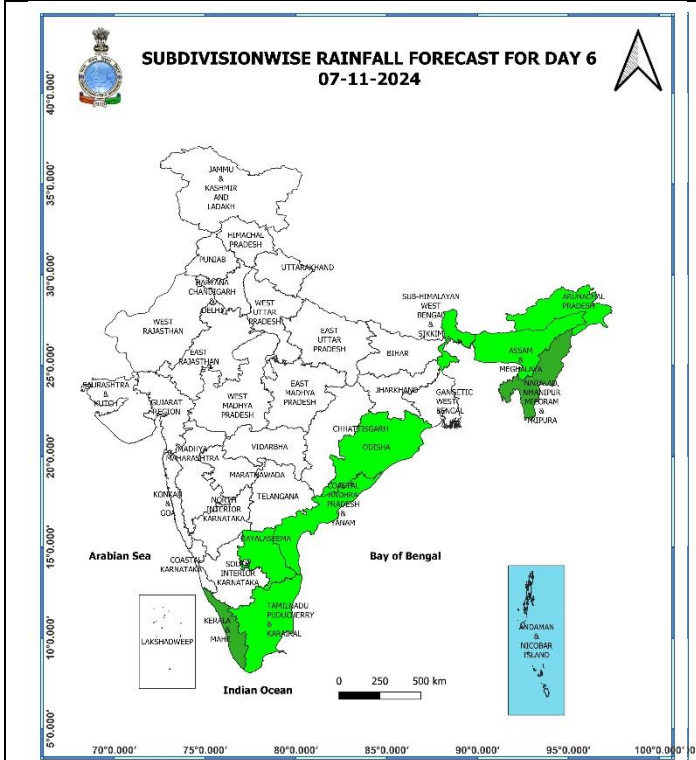
- ❖ **Heavy rainfall ( $\geq 7$  cm)** likely at isolated places over Andaman & Nicobar Islands.
- ❖ **Thunderstorm accompanied with lightning** likely at isolated places over Assam & Meghalaya, Nagaland, Manipur, Mizoram & Tripura, Coastal Andhra Pradesh & Yanam, Kerala & Mahe.



**06 November (Day 5):**

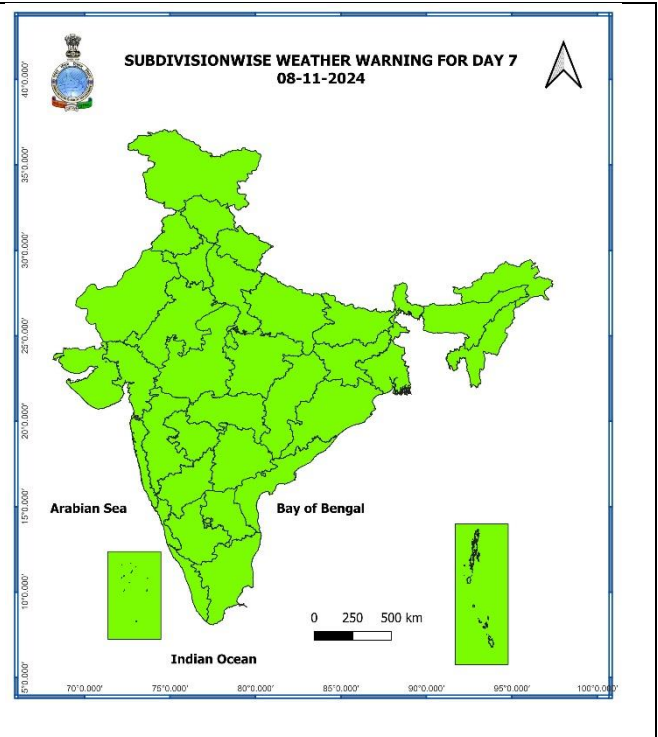
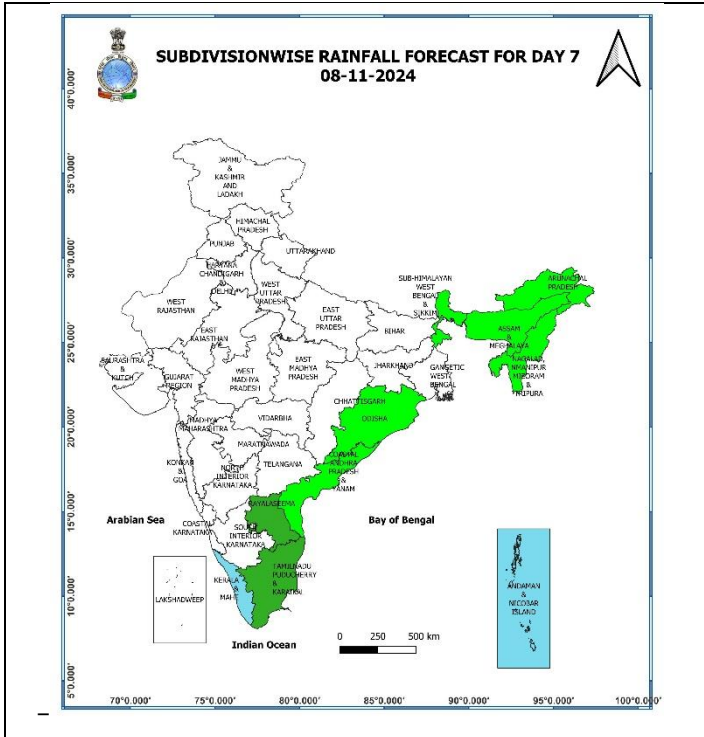
- ❖ **Thunderstorm accompanied with lightning** likely at isolated places over Assam & Meghalaya, Nagaland, Manipur, Mizoram & Tripura, Coastal Andhra Pradesh & Yanam.





**07 November (Day 6):**

❖ **No weather warning.**



## 08 November (Day 7):

❖ **No weather warning.**

## Weather Outlook for subsequent 3 days (During 09<sup>th</sup> November – 11<sup>th</sup> November, 2024)

- ❖ Isolated to Scattered light rainfall likely over some parts of Jammu-Kashmir-Ladakh-Gilgit-Baltistan-Muzaffarabad, Tamil Nadu, Puducherry & Karaikal, Kerala & Mahe and Northeast India.
- ❖ Mainly dry weather will prevail over rest parts of country.

- Action may be taken based on **ORANGE AND RED COLOUR** warnings.
- Vulnerable regions likely urban and hilly areas action may be initiated for heavy rainfall warning.
- As the lead period increases forecast accuracy decreases.

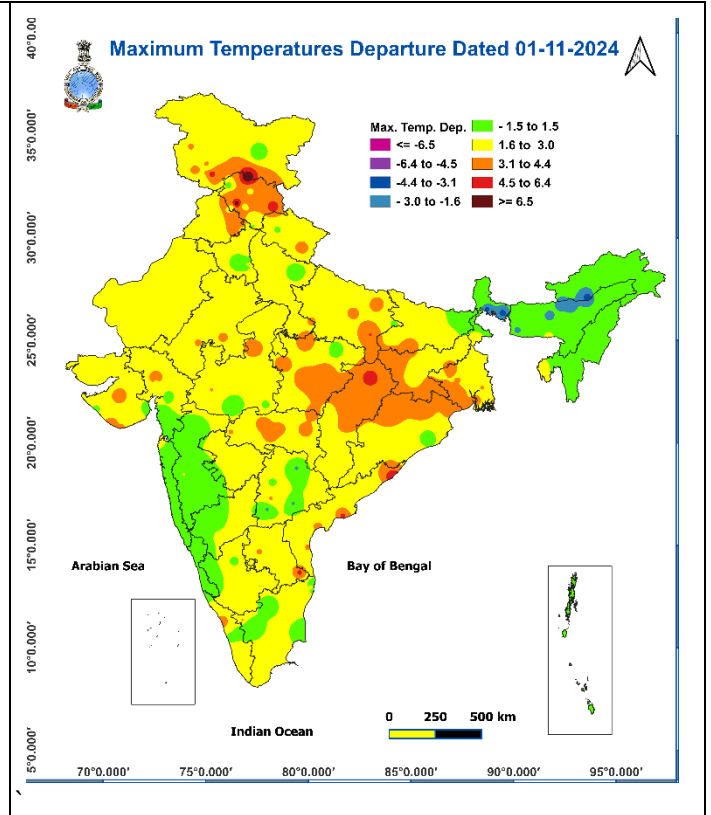
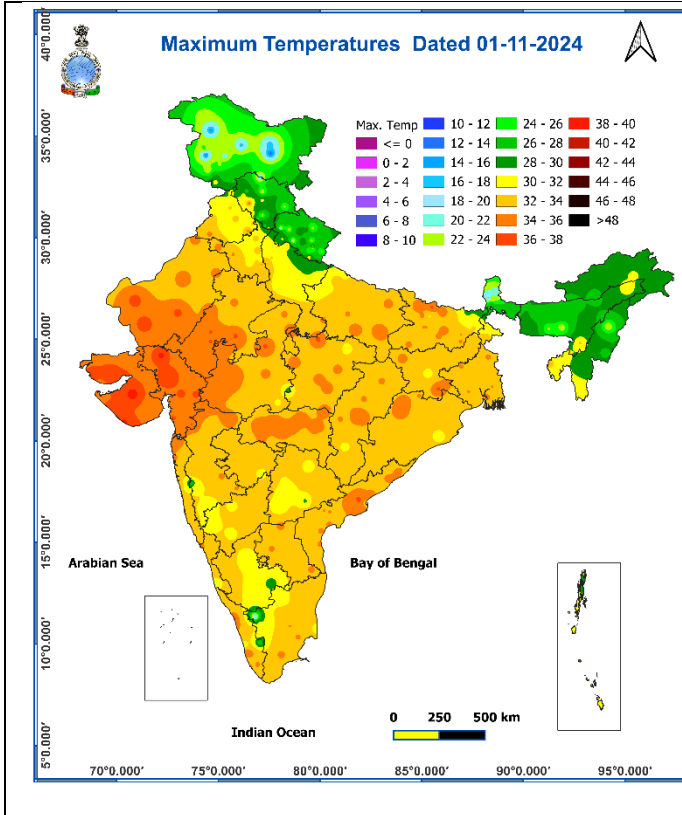
\* Red colour warning does not mean "Red Alert", Red colour warning means "Take Action".  
Forecast and Warning for any day is valid from 0830 hours IST of day till 0830 hours IST of next day.  
For more details, kindly visit <https://mausam.imd.gov.in> or contact: 011-2434-4599  
(Service to the Nation since 1875)

## Agromet advisories for Heavy Rainfall likely over various parts of the country

- ✓ In **Tamil Nadu**, drain out excess water from paddy and other field crops, vegetables and orchards. Undertake propping in sugarcane and provide support to banana plantations to avoid lodging.
- ✓ Drain out excess water from the standing crops in **Kerala**. Provide support to banana plants and strengthen the vegetable pandals.
- ✓ Keep the harvested produce at safer places.
- ✓ Provide mechanical support to horticultural crops and staking to vegetables.

**Fig. 1: Maximum Temperatures**

**Fig. 2: Departure of Maximum Temperatures**



**Fig. 3: Minimum Temperatures**

**Fig. 4: Departure of Minimum Temperatures**

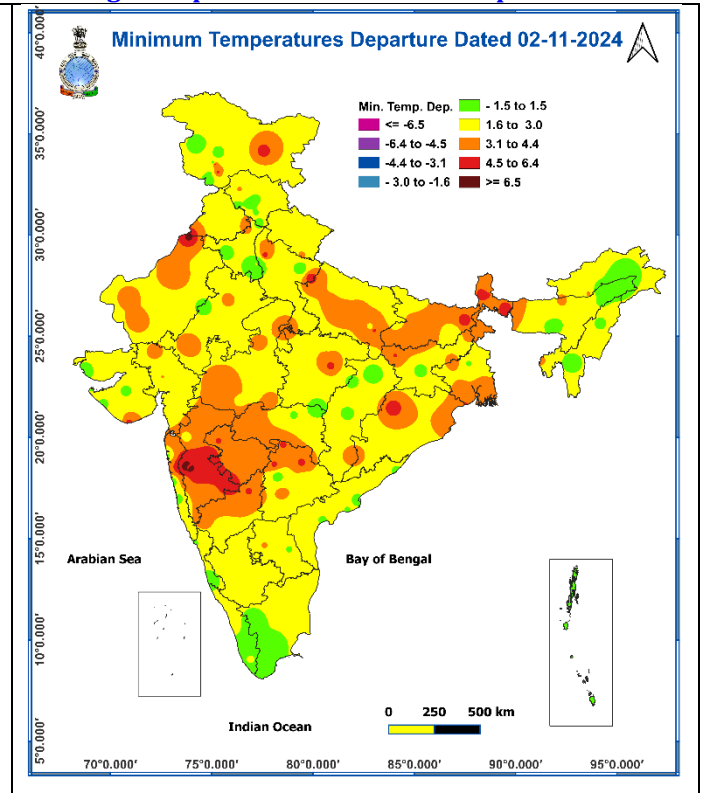
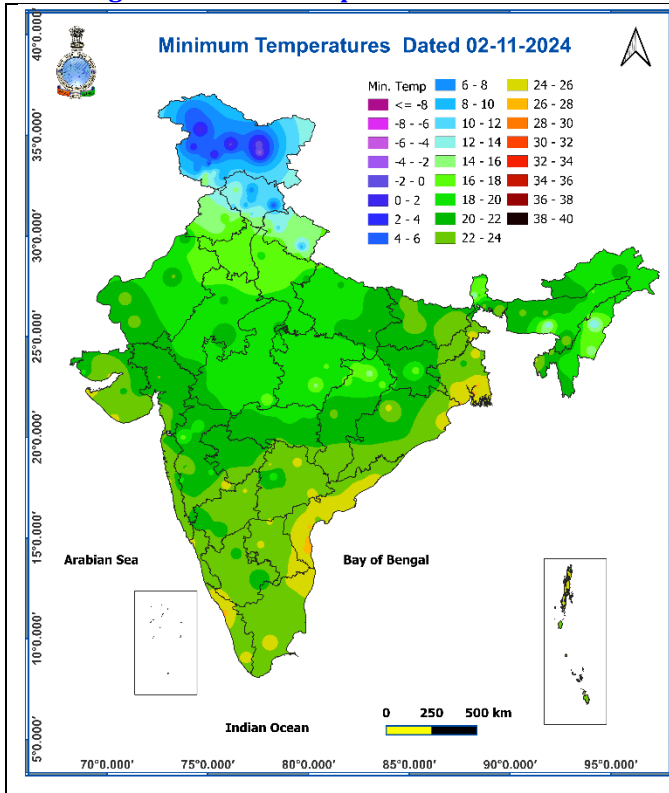
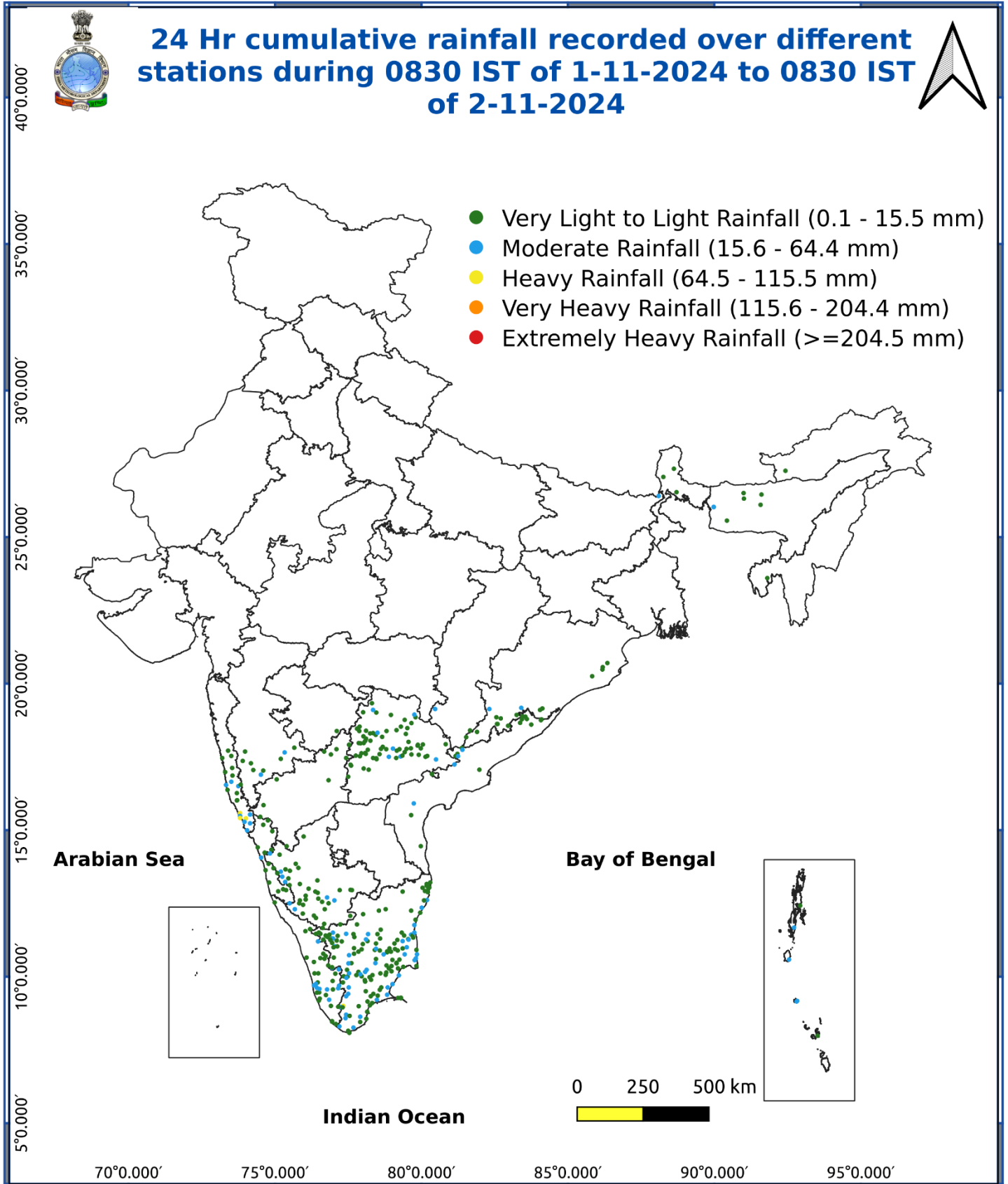




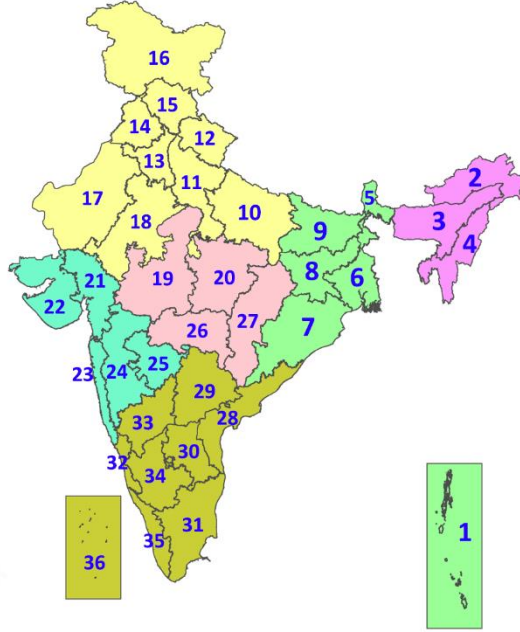
Fig. 5: Accumulated Rainfall (mm) during past 24 hours



\* Red colour warning does not mean "Red Alert", Red colour warning means "Take Action".  
Forecast and Warning for any day is valid from 0830 hours IST of day till 0830 hours IST of next day.  
For more details, kindly visit <https://mausam.imd.gov.in> or contact: 011-2434-4599  
(Service to the Nation since 1875)

## LEGENDS

1. अंडमान और निकोबार द्वीपसमूह
2. अरुणाचल प्रदेश
3. असम और मेघालय
4. नागालैंड, मणिपुर, मिजोरम और त्रिपुरा
5. उप-हिमालयी पश्चिम बंगाल और सिक्किम
6. गंगीय पश्चिम बंगाल
7. ओडिशा
8. झारखंड
9. बिहार
10. पूर्वी उत्तर प्रदेश
11. पश्चिम उत्तर प्रदेश
12. उत्तराखंड
13. हरियाणा, चंडीगढ़ और दिल्ली
14. पंजाब
15. हिमाचल प्रदेश
16. जम्मू और कश्मीर और लद्दाख
17. पश्चिम राजस्थान
18. पूर्वी राजस्थान
19. पश्चिम मध्य प्रदेश
20. पूर्वी मध्य प्रदेश
21. गुजरात
22. सौराष्ट्र
23. कोंकण और गोवा
24. मध्य महाराष्ट्र
25. मराठवाड़ा
26. विदर्भ
27. छत्तीसगढ़
28. तटीय आंध्र प्रदेश और यनम
29. तेलंगाना
30. रायलसीमा
31. तमिलनाडु, पुडुचेरी और कराईकल
32. तटीय कर्नाटक
33. आंतरिक उत्तरी कर्नाटक
34. आंतरिक दक्षिणी कर्नाटक
35. केरल और माहे
36. लक्षद्वीप



1. Andaman & Nicobar Islands
2. Arunachal Pradesh
3. Assam & Meghalaya
4. Nagaland, Manipur, Mizoram & Tripura
5. Sub-Himalayan West Bengal & Sikkim
6. Gangetic West Bengal
7. Odisha
8. Jharkhand
9. Bihar
10. East Uttar Pradesh
11. West Uttar Pradesh
12. Uttarakhand
13. Haryana, Chandigarh & Delhi
14. Punjab
15. Himachal Pradesh
16. Jammu & Kashmir and Ladakh
17. West Rajasthan
18. East Rajasthan
19. West Madhya Pradesh
20. East Madhya Pradesh
21. Gujarat
22. Saurashtra
23. Konkan & Goa
24. Madhya Maharashtra
25. Marathwada
26. Vidarbha
27. Chhattisgarh
28. Coastal Andhra Pradesh & Yanam
29. Telangana
30. Rayalaseema
31. Tamilnadu, Puducherry & Karaikal
32. Coastal Karnataka
33. North Interior Karnataka
34. South Interior Karnataka
35. Kerala & Mahe
36. Lakshadweep

## SPATIAL DISTRIBUTION (% of Stations reporting)

% Stations	Category	% Stations	Category
76-100	Widespread (WS/Most Places)	26-50	Scattered (SCT/A Few Places)
51-75	Fairly Widespread (FWS/Many Places)	1-25	Isolated (ISOL)



### COLOUR CODED WARNING

No Warning (No Action)
Watch (Be Aware)
Alert (Be Prepared To Take Action)
Warning (Take Action)

### Probabilistic Forecast

Terms	Probability of Occurrence (%)
Unlikely	< 25
Likely	25 - 50
Very Likely	50 - 75
Most Likely	> 75



## DEFINITION/CRITERIA

### Rain/ Snow \*

Heavy: 64.5 to 115.5 mm/cm \*  
Very Heavy: 115.6 to 204.4 mm/cm\*  
Extremely Heavy: > 204.4 mm/cm \*

### Heat Wave

When maximum temperature of a station reaches  $\geq 40^\circ\text{C}$  for plains and  $\geq 30^\circ\text{C}$  for hilly regions  
(a) Based on Departure from normal

Heat Wave: Maximum Temperature Departure from normal  $4.5^\circ\text{C}$  to  $6.4^\circ\text{C}$ .  
Severe Heat Wave: Maximum Temperature Departure from normal  $\geq 6.5^\circ\text{C}$

(b). Based on Actual maximum temperature

Heat Wave: When actual maximum temperature  $\geq 45^\circ\text{C}$ .  
Severe Heat Wave: When actual maximum temperature  $\geq 47^\circ\text{C}$

(c) Criteria for heat wave for coastal stations

When maximum temperature departure is  $>4.5^\circ\text{C}$  from normal. Heat Wave may be described provided maximum temperature  $\geq 37^\circ\text{C}$

### Warm Night

When maximum temperature remains  $40^\circ\text{C}$

Warm Night: When minimum temperature departure  $4.5^\circ\text{C}$  to  $6.4^\circ\text{C}$ .  
Severe Warm Night: When minimum temperature departure  $>6.4^\circ\text{C}$ .

### Cold Wave

When minimum temperature of a station  $\leq 10^\circ\text{C}$  for plains and  $\leq 0^\circ\text{C}$  for hilly regions.  
(a). Based on departure

Cold Wave: Minimum Temperature Departure from normal  $-4.5^\circ\text{C}$  to  $-6.4^\circ\text{C}$ .  
Severe Cold Wave: Minimum Temperature Departure from normal  $\leq -6.5^\circ\text{C}$

(b) Based on actual Minimum Temperature (for Plains only)

Cold Wave : When Minimum Temperature is  $\leq 4.0^\circ\text{C}$   
Severe Cold Wave: When Minimum Temperature is  $\leq 2.0^\circ\text{C}$

(c) For Coastal Stations

When Minimum Temperature departure is  $\leq -4.5^\circ\text{C}$  & actual Minimum Temperature is  $\leq 15^\circ\text{C}$

### Cold Day

When minimum temperature of a station  $\leq 10^\circ\text{C}$  for plains and  $\leq 0^\circ\text{C}$  for hilly regions  
Based on departure

Cold Day: Maximum Temperature Departure from normal  $-4.5^\circ\text{C}$  to  $-6.4^\circ\text{C}$ .  
Severe Cold Day: Maximum Temperature Departure from normal  $\leq -6.5^\circ\text{C}$

### Fog

Phenomenon of small droplets suspended in air and the horizontal visibility  $< 1\text{km}$

Moderate Fog: When the visibility between 500-200 metres  
Dense Fog: when the visibility between 50- 200 metres  
Very Dense Fog: when the visibility  $< 50$  metres

### Thunderstorm

Sudden electrical discharges manifested by a flash of light (Lightning) and a sharp rumbling sound (thunder)

### Dust/Sand Storm

An ensemble of particles of dust or sand energetically lifted to great heights by a strong and turbulent wind.

### Frost

Ice deposits on ground

Air temperature  $\leq 4^\circ\text{C}$  ( over Plains)

### Squall

A strong wind that rises suddenly, lasts for atleast 1 minute.

Moderate: Wind speed 52-61 kmph  
Severe: Wind speed 62-87 kmph  
Very Severe: Wind speed  $>87$  kmph

### Sea State

Effect of various waves in the sea over specific area

Rough to very rough: Wind speed 41-62 kmph (22-33 knots) & Wave height 2.5-6 metre  
High to very high: Wind speed 63-117 kmph ( 34-63 knots) & Wave height 6-14 metre  
Phenomenal: Wind speed  $>117$  kmph ( $>63$  knots) & Wave height  $>14$  metre

### Cyclone

Cyclonic Storm: Wind speed 62-87 kmph (34-47 knots)  
Severe Cyclonic Storm: Wind speed 88-117 kmph (48-63 knots)  
Very Severe Cyclonic Storm: Wind speed 118-165 kmph (64 - 89 knots)  
Extremely Severe Cyclonic Storm: Wind speed 166-220 kmph (90 -119 knots)  
Super Cyclone Strom: Wind speed  $>220$  kmph ( $>119$  knots)