

2026-03-22

Time of Issue: 13:10:00 hours IST  
(Mid-Day)

## ALL INDIA WEATHER SUMMARY AND FORECAST BULLETIN

### Significant Weather Features

#### Northwest India:

- **Isolated to scattered** light rainfall/snowfall with isolated thunderstorm, lightning & gusty winds speed reaching (30-50 kmph) likely over Jammu-Kashmir-Ladakh-Gilgit-Baltistan-Muzaffarabad on 26<sup>th</sup>; Himachal Pradesh on 23<sup>rd</sup> & 26<sup>th</sup>; Uttarakhand on 23<sup>rd</sup> March.
- **Isolated** thunderstorm, lightning & gusty winds speed reaching (30-40 kmph) likely over West Rajasthan on 25<sup>th</sup>; over East Rajasthan on 23<sup>rd</sup> & 25<sup>th</sup> with lightning over West Rajasthan on 22<sup>nd</sup> and East Rajasthan on 22<sup>nd</sup> & 26<sup>th</sup> March.

#### Northeast India:

- **Scattered to fairly widespread** light to moderate rainfall with **thunderstorm, lightning & gusty winds speed reaching (30-50 kmph)** likely over Assam & Meghalaya on 22<sup>nd</sup> & 24<sup>th</sup>; Nagaland, Manipur, Mizoram & Tripura on 22<sup>nd</sup> and Arunachal Pradesh on 24<sup>th</sup> March; **Thunderstorm & lightning** likely over Northeast India during next 5 days.
- **Isolated heavy rainfall** likely over Assam & Meghalaya and Arunachal Pradesh on 22<sup>nd</sup> & 24<sup>th</sup> March.

#### East India:

- **Isolated to Scattered** rainfall with **thunderstorm, lightning & gusty winds speed reaching (30-50 kmph)** likely over Sub-Himalayan West Bengal & Sikkim on 22<sup>nd</sup> -24<sup>th</sup> and 27<sup>th</sup> -28<sup>th</sup>; Gangetic West Bengal on 24<sup>th</sup>, 27<sup>th</sup> & 28<sup>th</sup>; Bihar, Jharkhand and Odisha during 24<sup>th</sup> -28<sup>th</sup> March.
- Isolated **Hailstorm** activity likely over Sub-Himalayan West Bengal & Sikkim on 24<sup>th</sup> March.

#### Central India:

- **Isolated** light to moderate rainfall with thunderstorm, lightning & **gusty winds speed reaching (30-40 kmph)** over Chhattisgarh on 22<sup>nd</sup> & 23<sup>rd</sup> and with lightning over Vidarbha on 26<sup>th</sup> and Chhattisgarh on 27<sup>th</sup> & 28<sup>th</sup> March.

#### West India:

- **Isolated thunderstorm & lightning & gusty winds speed reaching (40-50 kmph)** likely over Madhya Maharashtra on 23<sup>rd</sup> & 24<sup>th</sup> and Marathwada during 23<sup>rd</sup> - 25<sup>th</sup> March.

#### South Peninsular India:

- **Isolated thunderstorm, lightning & gusty winds speed reaching (30-50 kmph)** likely over Coastal Andhra Pradesh & Yanam and Rayalaseema during 22<sup>nd</sup>-24<sup>th</sup>; Telangana on 22<sup>nd</sup>, 25<sup>th</sup> and 26<sup>th</sup> March.

#### Hot & Humid weather Warnings:

- **Hot & humid conditions** very likely to prevail in isolated pockets over Kerala & Mahe during 22<sup>nd</sup>-24<sup>th</sup>; Konkan & Goa on 22<sup>nd</sup> & 23<sup>rd</sup> March.

#### Forecast of maximum/day temperatures:

- Gradual rise in maximum temperatures by 3-6°C likely over Northwest India during next 4 days except West Uttar Pradesh where temperature will rise by 4-7°C and East Uttar Pradesh rise by 7-10°C and no large change thereafter.

\*Red color warning does not mean "Red Alert" Red color warning means "Take Action"

Forecast and warning for any day is valid from 0830 hours IST of day till 0830 hours IST of next day

For more details kindly visit <https://mausam.imd.gov.in> or contact 011-2434-4599

(Service to the nation since 1875)



- Gradual rise in maximum temperatures by 3-5°C likely over Central India during next 5 days and no large change thereafter.
- Gradual rise in maximum temperatures by 4-6°C likely over East India during next 5 days and no large change thereafter.
- Gradual rise in maximum temperatures by 2-3°C likely over Maharashtra during next 2 days and no large change thereafter.
- Gradual rise in maximum temperatures by 2-4°C likely over Gujarat State during next 3 days and no large change thereafter.
- Gradual rise in maximum temperatures by 2-3°C likely over southern peninsula during next 5 days and no large change thereafter.
- No significant change in maximum temperatures likely over rest parts of the country.

**Main Weather Observations:**

- ❖ **Rainfall distribution** (from 0830 hours IST of yesterday to 0830 hours IST of today): **at most places** over Arunachal Pradesh, Assam & Meghalaya, Sub Himalayan West Bengal & Sikkim and Gangetic West Bengal; **at many places** over Nagaland, Manipur, Mizoram & Tripura and Bihar; **at isolated places** over Odisha, Jharkhand, East Uttar Pradesh, Uttarakhand, Himachal Pradesh, Jammu-KashmirLadakh-Gilgit-Baltistan-Muzaffarabad, West Rajasthan, East Rajasthan, Gujarat Region, Saurashtra & Kutch, Chhattisgarh, Coastal Andhra Pradesh & Yanam, Telangana, Tamil Nadu, Puducherry & Karaikal and Kerala & Mahe; **Dry** over rest of the country.
  - ❖ **Heavy Rainfall observed** (from 0830 hours IST of yesterday to 0830 hours IST of today):**Heavy rain** at isolated places over Assam & Meghalaya.
- **Heavy Rainfall observed** (from 0830 hours IST of yesterday to 0830 hours IST of today): **Assam:**Diphu 7, Dhemaji 7; **Manipur:**Jiribum 9.
  - ❖ **Minimum Temperature Departures (as on 22-03-2026): appreciably above normal(3.1°C to 5.0°C)** at isolated places over West Uttar Pradesh, Madhya Maharashtra, Coastal Andhra Pradesh & Yanam, Tamil Nadu, Puducherry & Karaikal and South Interior Karnataka. **above normal(1.6°C to 3.0°C)** at few places over West Rajasthan and Saurashtra & Kutch; at isolated places over Andaman & Nicobar Islands, Assam & Meghalaya and East Rajasthan. **near normal(-1.5°C to 1.5°C)** at many places over Konkan & Goa and Coastal Karnataka; at most places over Arunachal Pradesh, Gujarat Region, Rayalaseema, Kerala & Mahe and Lakshadweep; at few places over Nagaland, Manipur, Mizoram & Tripura, Sub Himalayan West Bengal & Sikkim, Odisha, Bihar, East Uttar Pradesh, Uttarakhand, Haryana-Chandigarh-Delhi, Punjab, Himachal Pradesh, Jammu-KashmirLadakh-Gilgit-Baltistan-Muzaffarabad, West Madhya Pradesh, Telangana and North Interior Karnataka; at isolated places over Jharkhand and Vidarbha. **The lowest minimum temperature** of 11.2°C was reported at LUDHIANA (HIMACHAL PRADESH) over the Plains of India.
  - ❖ **Maximum Temperature Departures (as on 21-03-2026): markedly below normal (-5.1°C or less)** at most places over Bihar, West Bengal & Sikkim; at many places over East Madhya Pradesh, East Uttar Pradesh, Jharkhand; at a few places over Chhattisgarh; at isolated places over Nagaland, Manipur, Mizoram & Tripura, Odisha, Assam & Meghalaya, Coastal Karnataka; **appreciably below normal (-3.1°C to -5.0°C)** at most places over East Rajasthan; at many places over West Madhya Pradesh, West Uttar Pradesh; at a few places over Haryana-Chandigarh-Delhi; at isolated places over West Rajasthan; **below normal (-3.0°C to -1.6°C)** at most places over Telangana, Gujarat Region, Madhya Maharashtra, Marathwada; at many places over Vidarbha, Saurashtra & Kutch, Punjab, Himachal Pradesh; at a few places over Rayalaseema; at isolated places over Coastal Andhra Pradesh & Yanam, Arunachal Pradesh, Tamil Nadu, Puducherry & Karaikal. They were **markedly above normal (5.1°C or more)** at isolated places over Jammu-Kashmir-Ladakh-Gilgit-Baltistan-Muzaffarabad, and Uttarakhand. **The highest maximum temperature of 39.9°C is reported at Sri Ganganagar (Rajasthan).**

\*Red color warning does not mean "Red Alert" Red color warning means "Take Action"

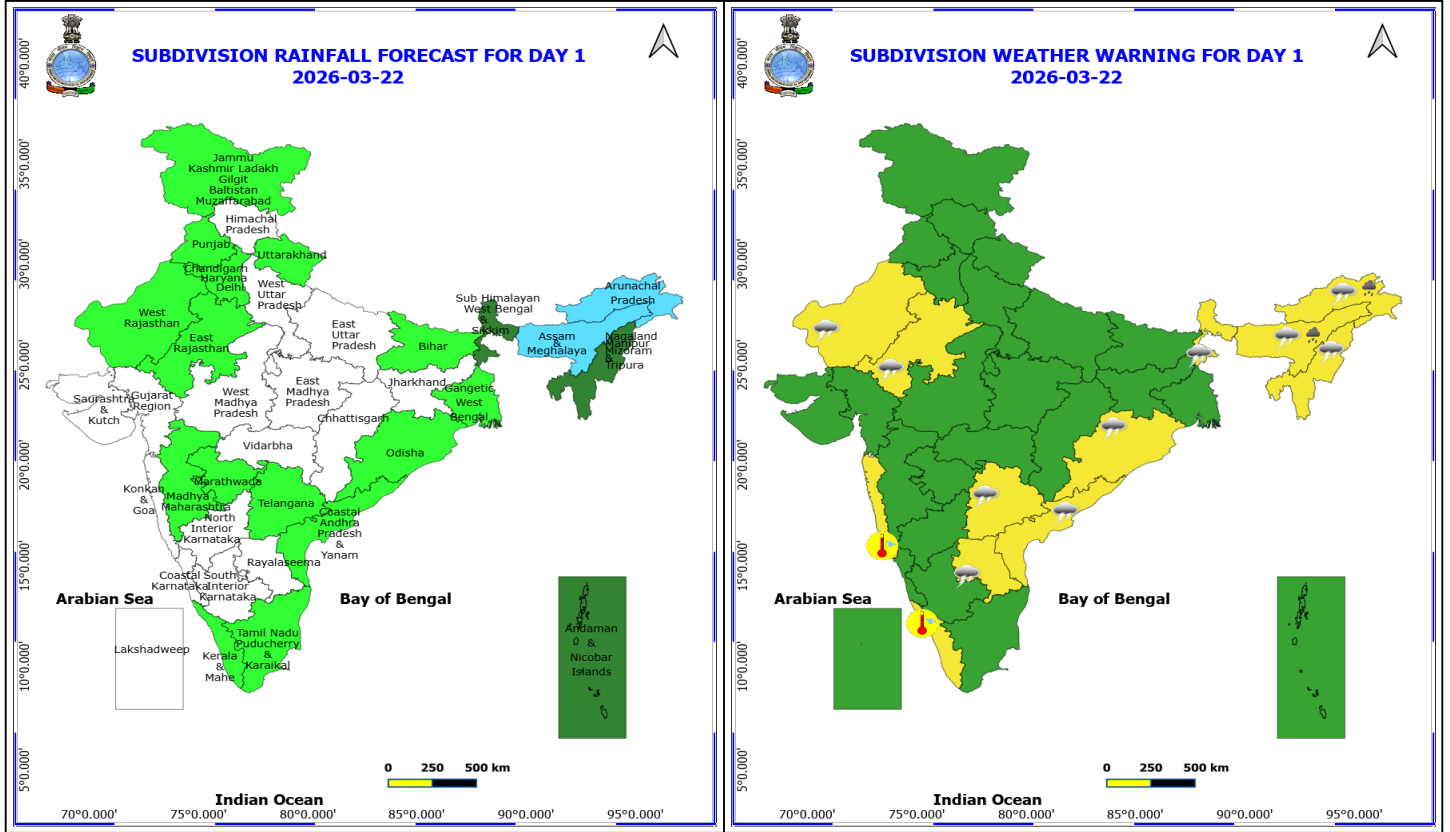
Forecast and warning for any day is valid from 0830 hours IST of day till 0830 hours IST of next day

For more details kindly visit <https://mausam.imd.gov.in> or contact 011-2434-4599

(Service to the nation since 1875)

**Meteorological Analysis (Based on 0830 hours IST)**

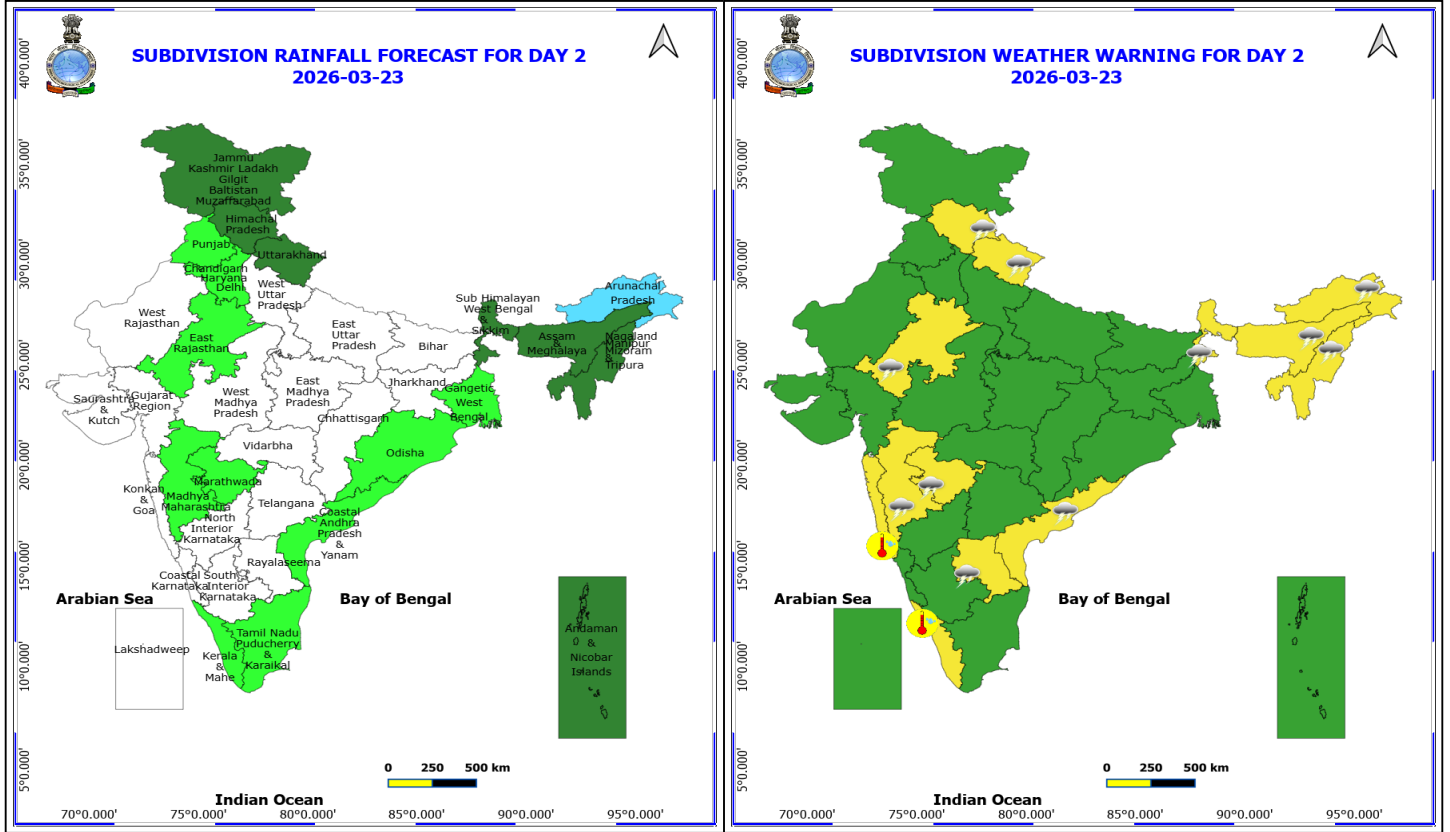
- The **Western Disturbance** as a trough in middle tropospheric westerlies with its axis at 5.8 km above mean sea level now runs roughly along Long. 60°E to the north of Lat. 35°N.
- The **upper air cyclonic circulation** over East Bangladesh & neighbourhood extending upto 1.5 km above mean sea level with a **trough** aloft roughly along Long. 90°E to the north of Lat. 24°N between 3.1 & 9.6 km above mean sea level persists.
- The **upper air cyclonic circulation** over South Interior Karnataka & neighbourhood persists and now seen at 1.5 km above mean sea level.
- The **trough** from Gulf of Mannar to South Madhya Maharashtra across Tamil Nadu, interior Karnataka at 0.9 km above mean sea level persists.
- The **upper air cyclonic circulation** over southwest Rajasthan & adjoining Pakistan now lies over west Rajasthan & adjoining Pakistan at 1.5 km above mean sea level.
- **Subtropical westerly Jet Stream** with core winds of the order of 85 knots at 12.6 km above mean sea level prevails over central India.
- A fresh feeble **Western Disturbance** is likely to affect northwest India from 26<sup>th</sup> March 2026.



**22 March (Day 1)**

- ❖ **Heavy Rainfall** very likely at isolated places over Arunachal Pradesh and Assam & Meghalaya.
- ❖ **Thunderstorm accompanied with lightning & gusty winds(40-50kmph)** very likely at isolated places over Coastal Andhra Pradesh.
- ❖ **Thunderstorm accompanied with lightning & gusty winds(30-40kmph)** very likely at isolated places over Assam & Meghalaya, Nagaland, Manipur, Mizoram and Tripura, Odisha, Rayalaseema, Sub Himalayan West Bengal & Sikkim and Telangana.
- ❖ **Thunderstorm accompanied with Lightning** very likely at isolated places over Arunachal Pradesh and Rajasthan.
- ❖ **Hot and Humid weather** very likely at isolated places over Kerala & Mahe and Konkan & Goa.
- ❖ **Squally weather with speed 35–45 kmph gusting to 55 kmph** likely to prevail along and off north Oman coast and adjoining northwest Arabian Sea.

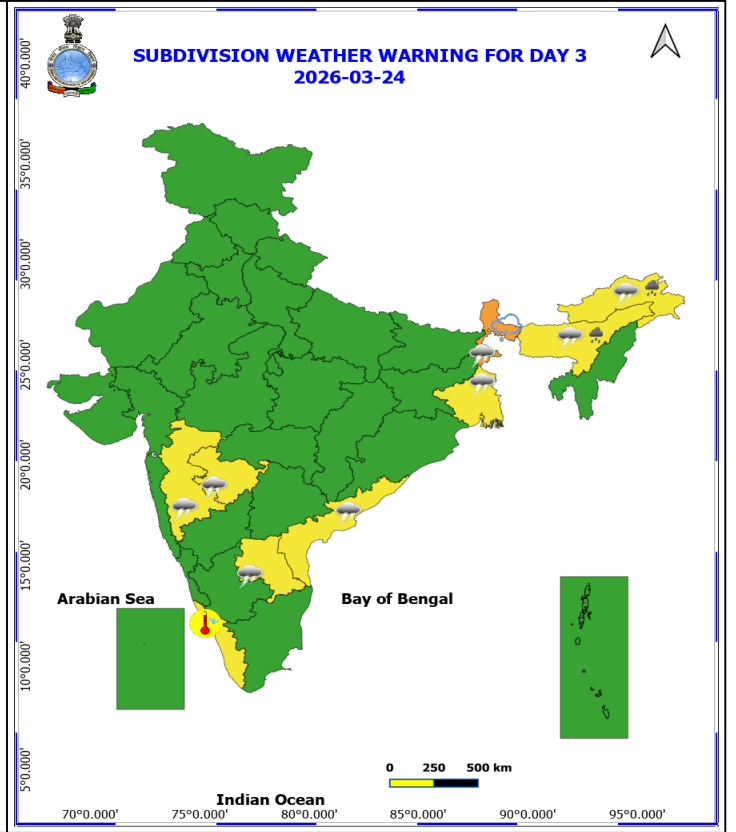
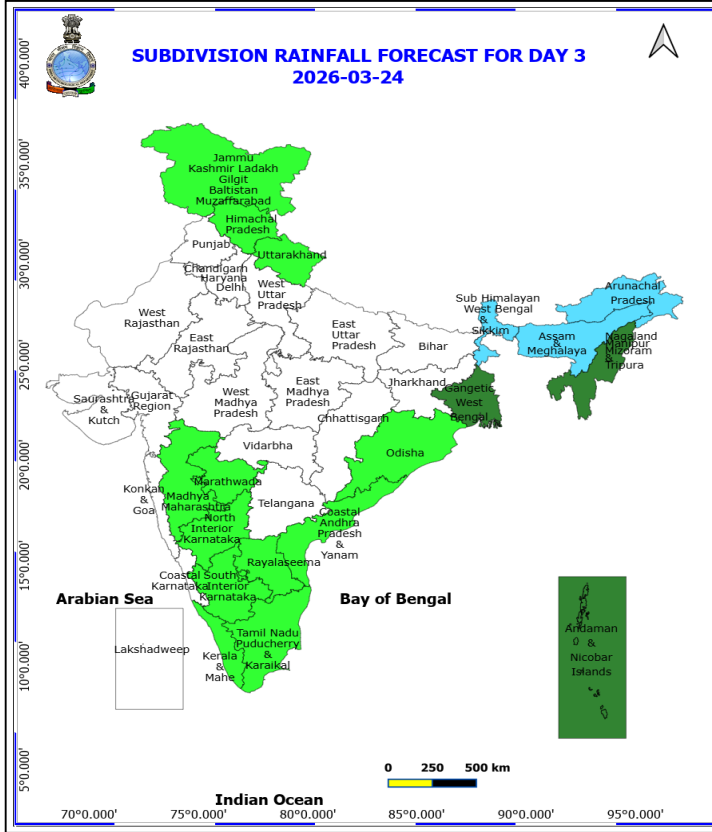
**\*Red color warning does not mean "Red Alert" Red color warning means "Take Action"**  
**Forecast and warning for any day is valid from 0830 hours IST of day till 0830 hours IST of next day**  
**For more details kindly visit <https://mausam.imd.gov.in> or contact 011-2434-4599**  
**(Service to the nation since 1875)**



**23 March (Day 2)**

- ❖ **Thunderstorm accompanied with lightning & gusty winds(40-50kmph)** very likely at isolated places over Coastal Andhra Pradesh, Madhya Maharashtra, Marathwada and Uttarakhand.
- ❖ **Thunderstorm accompanied with lightning & gusty winds(30-40kmph)** very likely at isolated places over East Rajasthan, Himachal Pradesh, Rayalaseema and Sub Himalayan West Bengal & Sikkim.
- ❖ **Thunderstorm accompanied with Lightning** very likely at isolated places over Arunachal Pradesh, Assam & Meghalaya and Nagaland, Manipur, Mizoram and Tripura.
- ❖ **Hot and Humid weather** very likely at isolated places over Kerala & Mahe and Konkan & Goa.

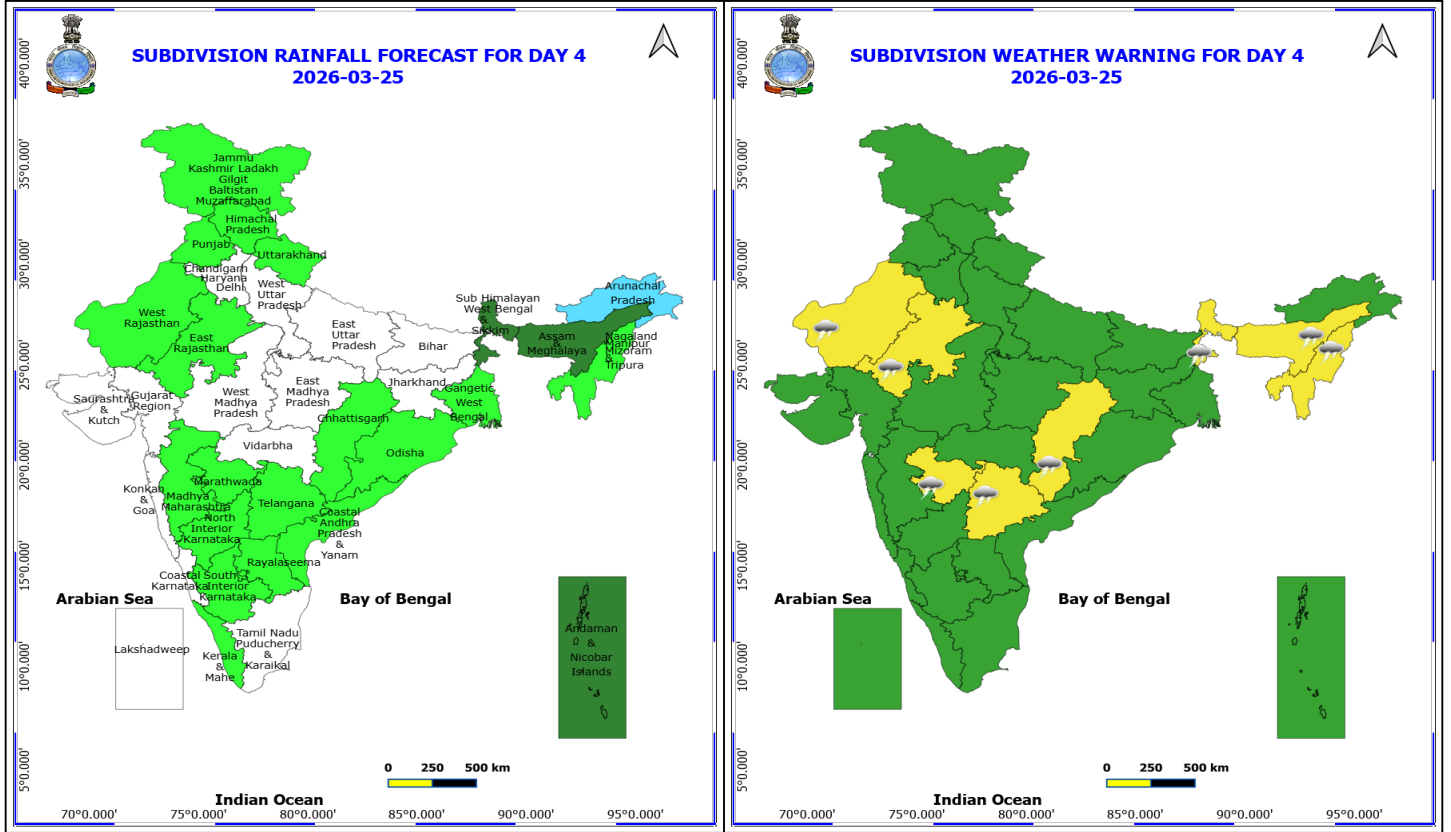
**No Fishermen Warning**



**24 March (Day 3)**

- ❖ **Heavy Rainfall** very likely at isolated places over Arunachal Pradesh and Assam & Meghalaya.
- ❖ **Thunderstorm accompanied with Hailstorm** very likely at isolated places over Sub Himalayan West Bengal & Sikkim.
- ❖ **Thunderstorm accompanied with lightning & gusty winds(40-50kmph)** very likely at isolated places over Assam & Meghalaya, Coastal Andhra Pradesh, Madhya Maharashtra, Marathwada and Sub Himalayan West Bengal & Sikkim.
- ❖ **Thunderstorm accompanied with lightning & gusty winds(30-40kmph)** very likely at isolated places over Arunachal Pradesh, Gangetic West Bengal and Rayalaseema.
- ❖ **Hot and Humid weather** very likely at isolated places over Kerala & Mahe.

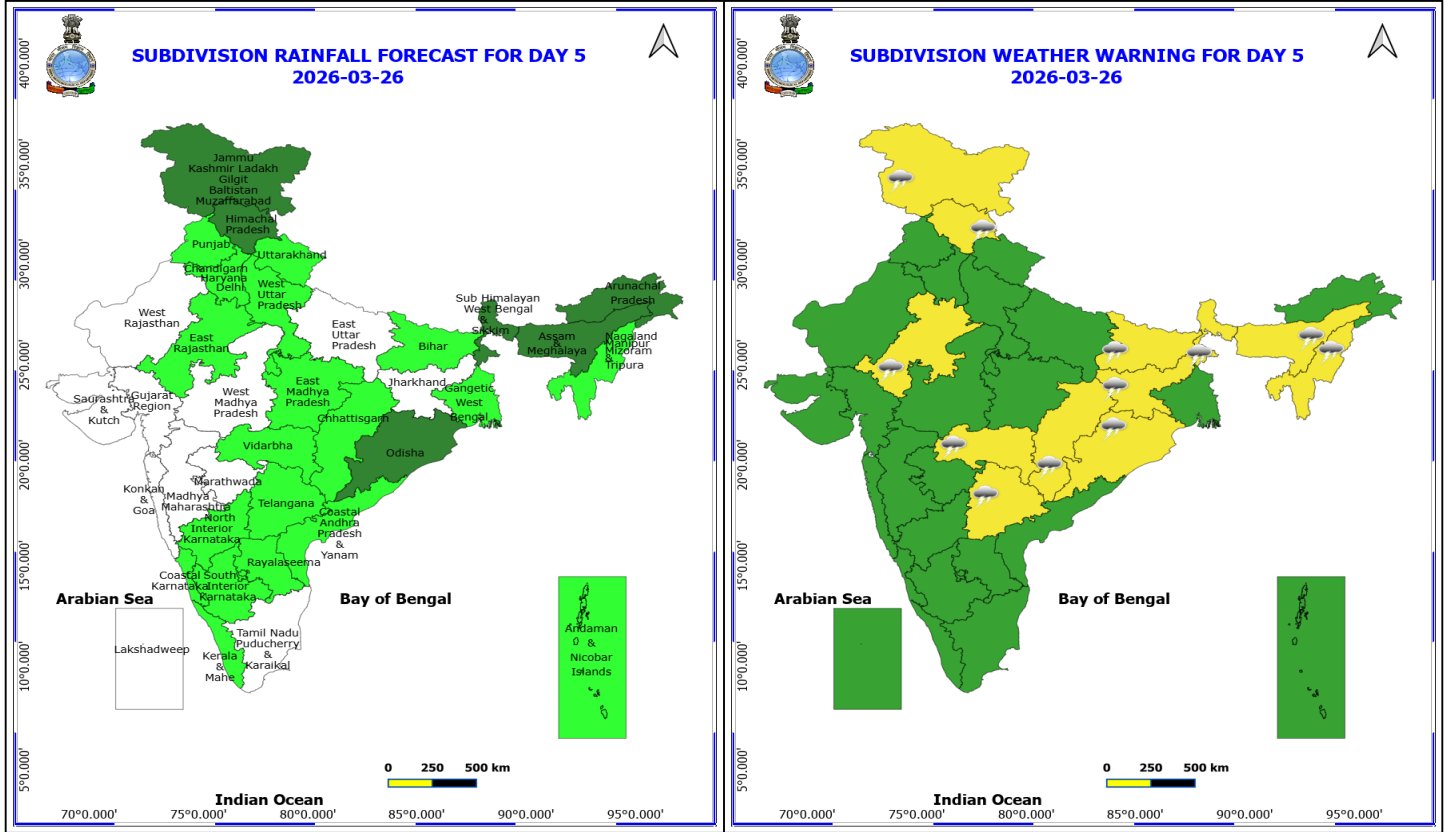
**No Fishermen Warning**



**25 March (Day 4)**

- ❖ **Thunderstorm accompanied with lightning & gusty winds(40-50kmph)** likely at isolated places over Marathwada.
- ❖ **Thunderstorm accompanied with lightning & gusty winds(30-40kmph)** likely at isolated places over Chhattisgarh, Rajasthan and Telangana.
- ❖ **Thunderstorm accompanied with Lightning** likely at isolated places over Assam & Meghalaya, Nagaland, Manipur, Mizoram and Tripura and Sub Himalayan West Bengal & Sikkim.

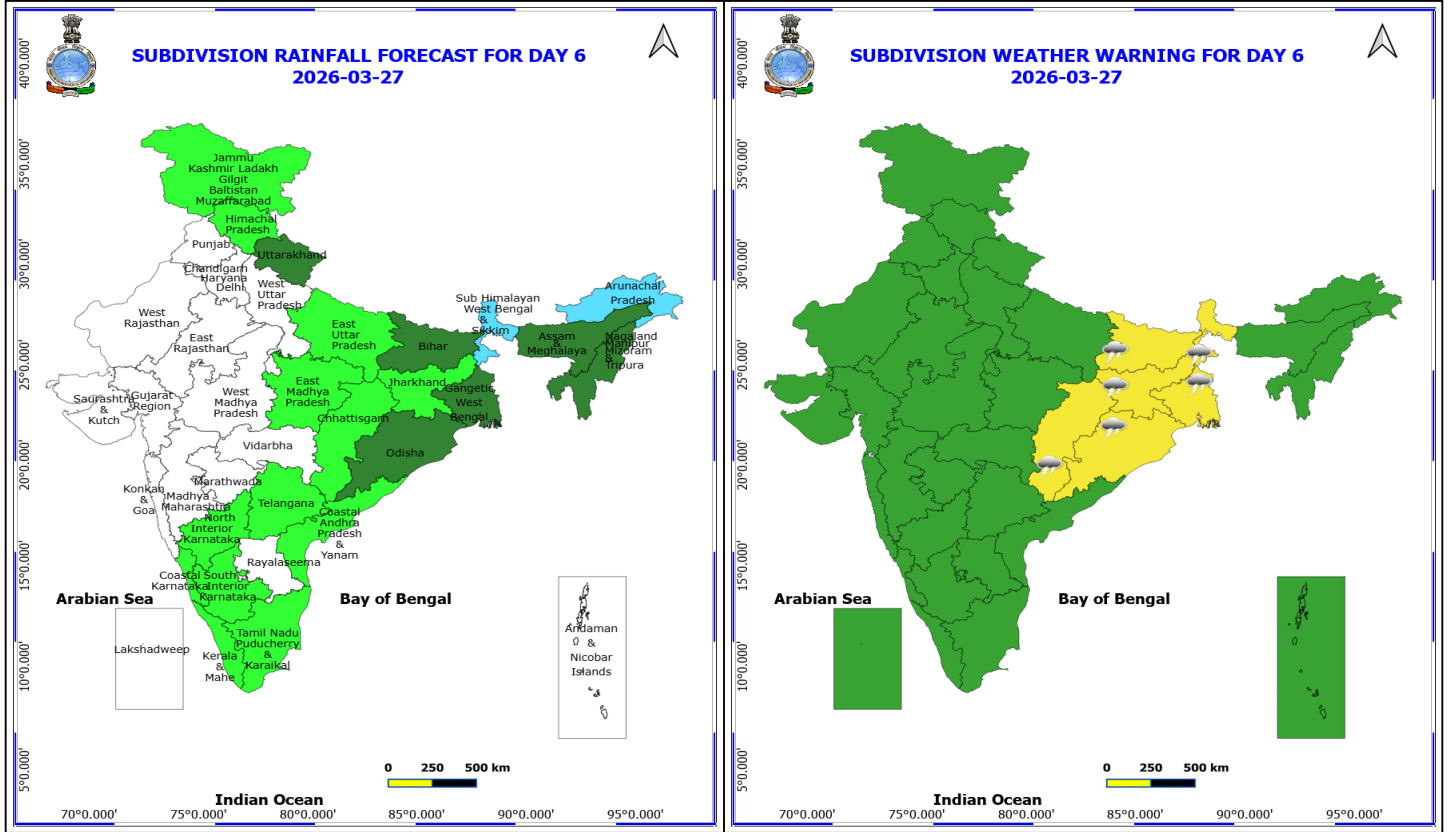
**No Fishermen Warning**



**26 March (Day 5)**

- ❖ **Thunderstorm accompanied with lightning & gusty winds(40-50kmph)** likely at isolated places over Bihar, Jharkhand and Odisha.
- ❖ **Thunderstorm accompanied with lightning & gusty winds(30-40kmph)** likely at isolated places over Chhattisgarh, Himachal Pradesh, Jammu-Kashmir-Ladakh-Gilgit-Baltistan-Muzaffarabad and Telangana.
- ❖ **Thunderstorm accompanied with Lightning** likely at isolated places over Assam & Meghalaya, East Rajasthan, Nagaland, Manipur, Mizoram and Tripura, Sub Himalayan West Bengal & Sikkim and Vidarbha.

**No Fishermen Warning**

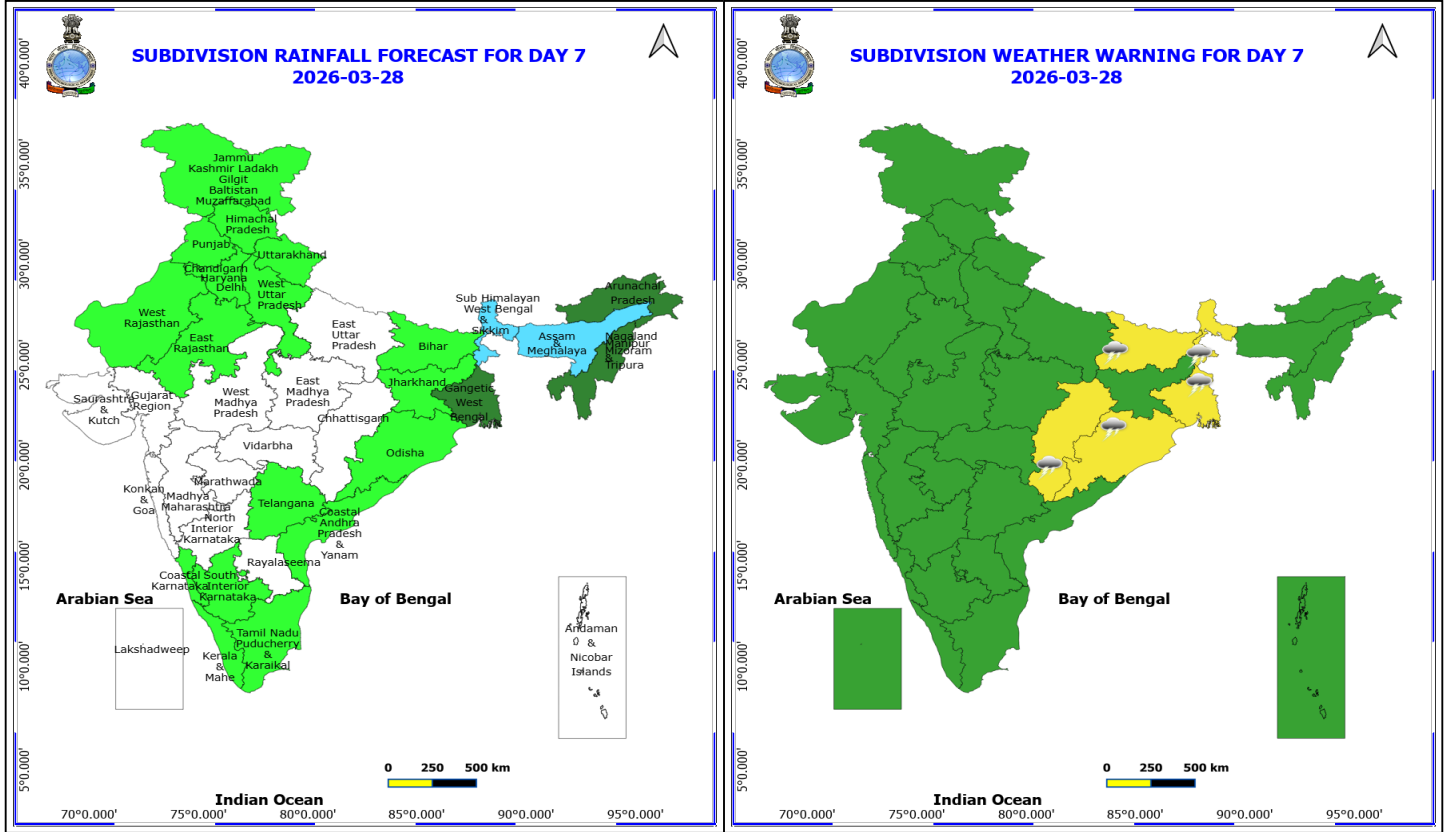


**27 March (Day 6)**

- ❖ **Thunderstorm accompanied with lightning & gusty winds(40-50kmph)** likely at isolated places over Bihar, Jharkhand, Odisha and West Bengal & Sikkim.
- ❖ **Thunderstorm accompanied with Lightning** likely at isolated places over Chhattisgarh.

**No Fishermen Warning**

**\*Red color warning does not mean "Red Alert" Red color warning means "Take Action"**  
Forecast and warning for any day is valid from 0830 hours IST of day till 0830 hours IST of next day  
For more details kindly visit <https://mausam.imd.gov.in> or contact 011-2434-4599  
(Service to the nation since 1875)



**28 March (Day 7)**

- ❖ **Thunderstorm accompanied with lightning & gusty winds(40-50kmph)** likely at isolated places over West Bengal & Sikkim.
- ❖ **Thunderstorm accompanied with lightning & gusty winds(30-40kmph)** likely at isolated places over Bihar and Odisha.
- ❖ **Thunderstorm accompanied with Lightning** likely at isolated places over Chhattisgarh.

**No Fishermen Warning**



**Table-1**

**7 Days Rainfall Forecast**

S.No.	Subdivision	22- Mar	23- Mar	24- Mar	25- Mar	26- Mar	27- Mar	28- Mar
		Day 1	Day 2	Day 3	Day 4	Day 5	Day 6	Day 7
1	ANDAMAN & NICOBAR ISLANDS	SCT	SCT	SCT	SCT	ISOL	DRY	DRY
2	ARUNACHAL PRADESH	FWS	FWS	FWS	FWS	SCT	FWS	SCT
3	ASSAM & MEHGHALAYA	FWS	SCT	FWS	SCT	SCT	SCT	FWS
4	N. M. M. & T.	SCT	SCT	SCT	ISOL	ISOL	SCT	SCT
5	S.H. WEST BENGAL & SIKKIM	SCT	SCT	FWS	SCT	SCT	FWS	FWS
6	GANGETIC WEST BENGAL	ISOL	ISOL	SCT	ISOL	ISOL	SCT	SCT
7	ODISHA	ISOL	ISOL	ISOL	ISOL	SCT	SCT	ISOL
8	JHARKHAND	DRY	DRY	DRY	DRY	DRY	ISOL	ISOL
9	BIHAR	ISOL	DRY	DRY	DRY	ISOL	SCT	ISOL
10	EAST UTTAR PRADESH	DRY	DRY	DRY	DRY	DRY	ISOL	DRY
11	WEST UTTAR PRADESH	DRY	DRY	DRY	DRY	ISOL	DRY	ISOL
12	UTTARAKHAND	ISOL	SCT	ISOL	ISOL	ISOL	SCT	ISOL
13	HARYANA, CHD & DELHI	ISOL	ISOL	DRY	DRY	ISOL	DRY	ISOL
14	PUNJAB	ISOL	ISOL	DRY	ISOL	ISOL	DRY	ISOL
15	HIMACHAL PRADESH	DRY	SCT	ISOL	ISOL	SCT	ISOL	ISOL
16	JAMMU AND KASHMIR AND LADAKH	ISOL	SCT	ISOL	ISOL	SCT	ISOL	ISOL
17	WEST RAJASTHAN	ISOL	DRY	DRY	ISOL	DRY	DRY	ISOL
18	EAST RAJASTHAN	ISOL	ISOL	DRY	ISOL	ISOL	DRY	ISOL
19	WEST MADHYA PRADESH	DRY	DRY	DRY	DRY	DRY	DRY	DRY
20	EAST MADHYA PRADESH	DRY	DRY	DRY	DRY	ISOL	ISOL	DRY
21	GUJRAT REGION	DRY	DRY	DRY	DRY	DRY	DRY	DRY
22	SAURASHTRA & KUTCH	DRY	DRY	DRY	DRY	DRY	DRY	DRY
23	KONKAN & GOA	DRY	DRY	DRY	DRY	DRY	DRY	DRY
24	MADHYA MAHARASHTRA	ISOL	ISOL	ISOL	ISOL	DRY	DRY	DRY
25	MARATHWADA	ISOL	ISOL	ISOL	ISOL	DRY	DRY	DRY
26	VIDARBHA	DRY	DRY	DRY	DRY	ISOL	DRY	DRY
27	CHATTISGARH	DRY	DRY	DRY	ISOL	ISOL	ISOL	DRY
28	COASTAL ANDHRA PRADESH	ISOL	ISOL	ISOL	ISOL	ISOL	ISOL	ISOL
29	TELANGANA	ISOL	DRY	DRY	ISOL	ISOL	ISOL	ISOL
30	RAYALASEEMA	DRY	DRY	ISOL	ISOL	ISOL	DRY	DRY
31	TAMILNADU & PUDUCHERRY	ISOL	ISOL	ISOL	DRY	DRY	ISOL	ISOL
32	COSTAL KARNATAKA	DRY	DRY	DRY	DRY	ISOL	ISOL	ISOL
33	NORTH INTERIOR KARNATAKA	DRY	DRY	ISOL	ISOL	ISOL	ISOL	DRY
34	SOUTH INTERIOR KARNATAKA	DRY	DRY	ISOL	ISOL	ISOL	ISOL	ISOL
35	KERALA	ISOL	ISOL	ISOL	ISOL	ISOL	ISOL	ISOL
36	LAKSHDWEEP	DRY	DRY	DRY	DRY	DRY	DRY	DRY

Legend	Category	%Stations
WS	Widespread/Most Places	76-100
FWS	Fairly Widespread/Many Places	51-75
SCT	Scattered/ A Few Places	26-50
ISOL	Isolated Places	1-25
DRY	No Rain	0

\*Red color warning does not mean "Red Alert" Red color warning means "Take Action"  
Forecast and warning for any day is valid from 0830 hours IST of day till 0830 hours IST of next day  
For more details kindly visit <https://mausam.imd.gov.in> or contact 011-2434-4599

(Service to the nation since 1875)

Fig. 1: Maximum Temperatures Dated 2026-03-21

Fig. 2: Departure of Maximum Temp. Dated 2026-03-21

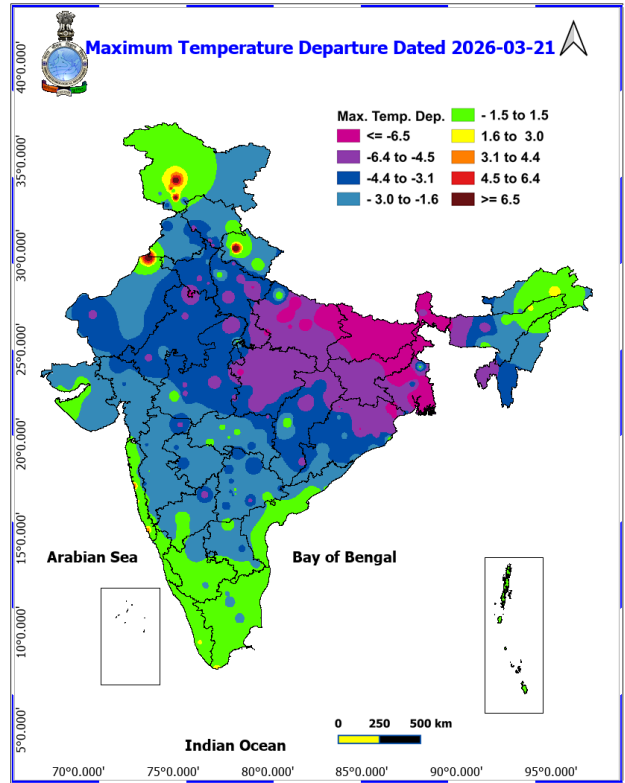
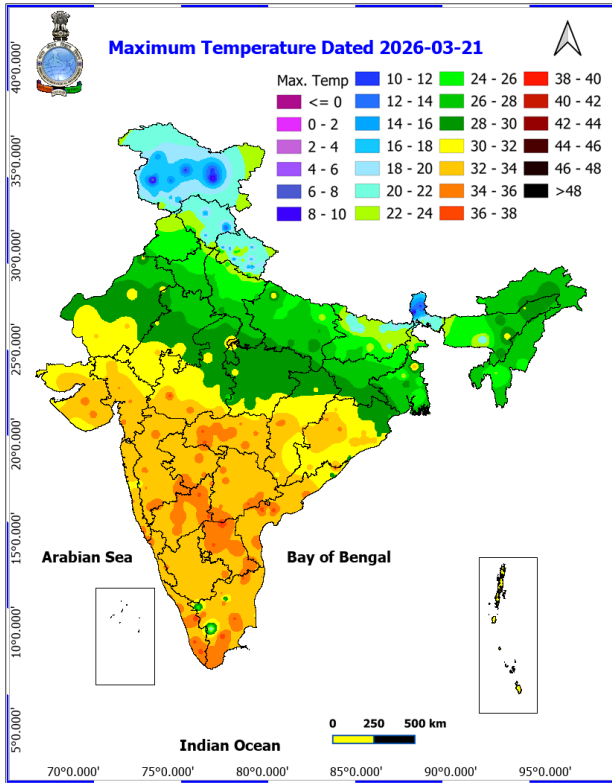
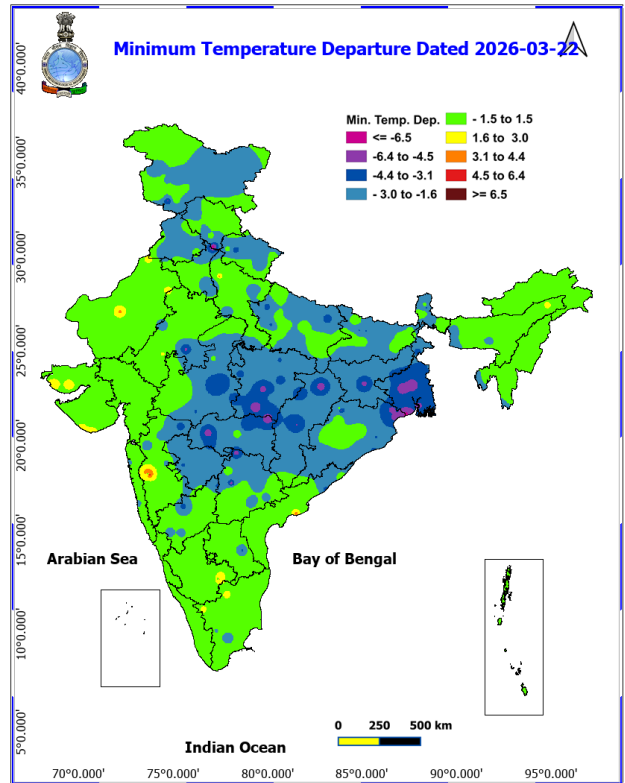
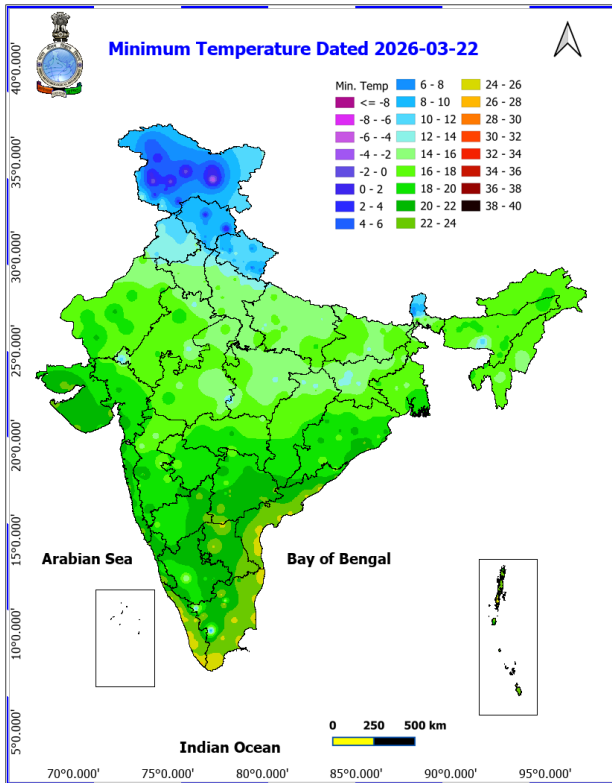


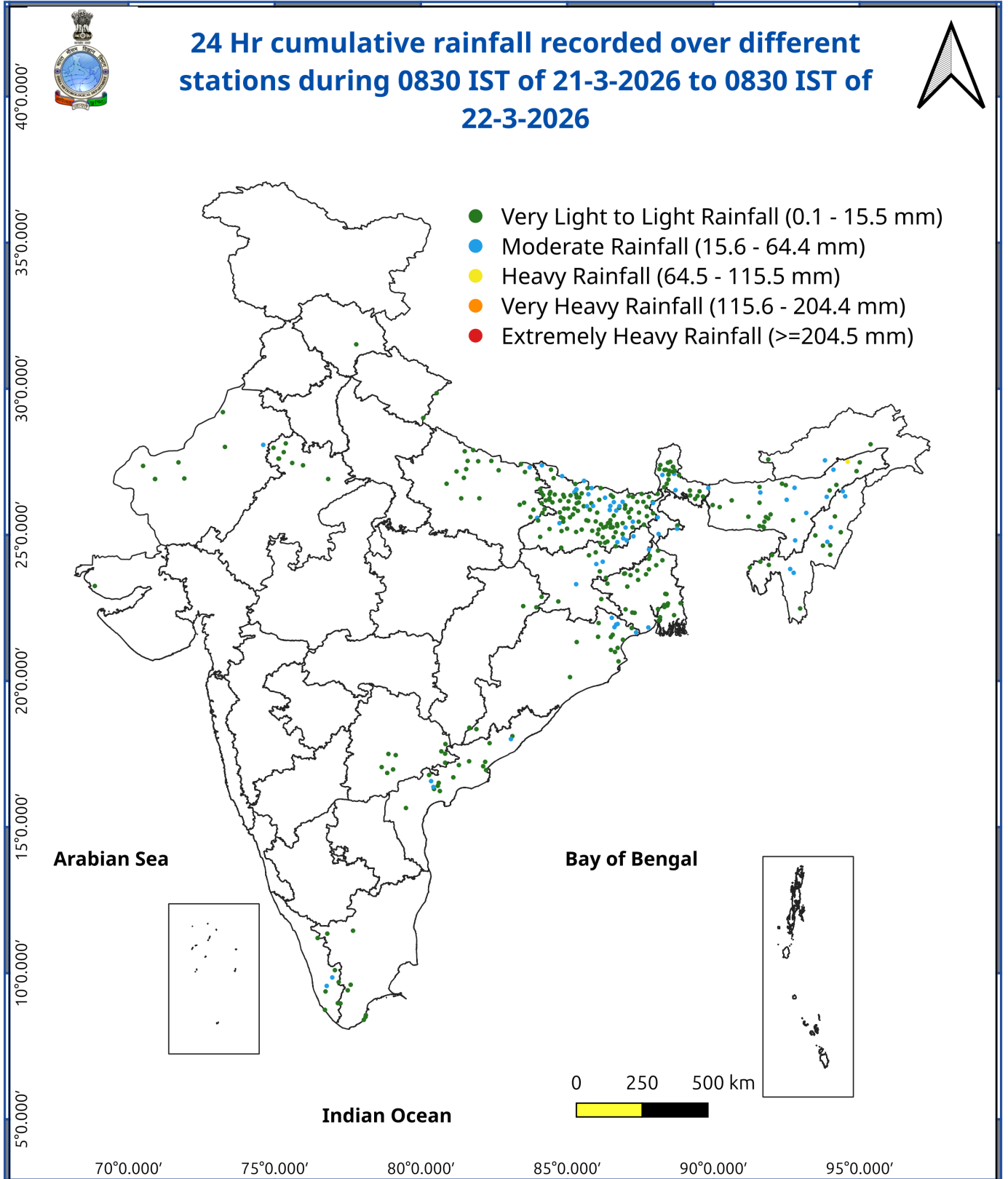
Fig. 3: Minimum Temperatures Dated 2026-03-22

Fig. 4: Departure of Minimum Temp. Dated 2026-03-22



**\*Red color warning does not mean "Red Alert" Red color warning means "Take Action"**  
Forecast and warning for any day is valid from 0830 hours IST of day till 0830 hours IST of next day  
For more details kindly visit <https://mausam.imd.gov.in> or contact 011-2434-4599

(Service to the nation since 1875)



## Impact and Actions

### Impact & Action Suggested due to heavy/very heavy rainfall:

- **Isolated heavy rainfall** likely over Assam & Meghalaya and Arunachal Pradesh on 22<sup>nd</sup> & 24<sup>th</sup> March.

### Impact Expected

- Localized Flooding of roads, water logging in low lying areas and closure of underpasses mainly in urban areas of the above region.
- Occasional reduction in visibility due to heavy rainfall.
- Disruption of traffic in major cities due to water logging in roads leading to increased travel time.
- Minor damage to kutcha roads.
- Possibilities of damage to vulnerable structure.
- Localized Landslides/Mudslides
- Damage to horticulture and standing crops in some areas due to inundation.
- It may lead to riverine flooding in some river catchments (for riverine flooding please visit Web page of CWC).

### Action Suggested

- Check for traffic congestion on your route before leaving for your destination.
- Follow any traffic advisories that are issued in this regard.
- Avoid going to areas that face the water logging problems often.
- Avoid staying in vulnerable structure.

### Impact expected and action suggested due to isolated Hailstorm over

- **Isolated heavy rainfall** likely over Assam & Meghalaya and Arunachal Pradesh on 22<sup>nd</sup> & 24<sup>th</sup> March.

### Impact Expected

- Localized Flooding of roads, water logging in low lying areas and closure of underpasses mainly in urban areas.
- Occasional reduction in visibility due to heavy rainfall.
- Disruption of traffic in major cities due to water logging in roads leading to increased travel time.
- Minor damage to kutcha roads.
- Possibilities of damage to vulnerable structure.
- Localized Landslides/Mudslides/landslips/mudslips/landsinks/mudsinks.
- Damage to horticulture and standing crops in some areas due to inundation.
- It may lead to riverine flooding in some river catchments (for riverine flooding please visit Web page of CWC)

### Action Suggested

- Check for traffic congestion on your route before leaving for your destination.
- Follow any traffic advisories that are issued in this regard.
- Avoid going to areas that face the water logging problems often.
- Avoid staying in vulnerable structure.

## Agromet advisories for various parts of the country

### Agromet advisories for likely impact of Heavy Rainfall

- In **Arunachal Pradesh**, undertake harvesting of cabbage, pea, mustard and late-maturing paddy varieties and digging of potatoes. Shift the harvested produce to safe places. Maintain proper drainage channels in the fields of rice, maize, other standing crops, vegetables and orchards.
- In **Assam**, drain out excess rainwater from the standing crop fields.
- In **Meghalaya**, ensure proper drainage in summer vegetable crops. Carry out staking and propping of plantation crops and protect young seedlings from heavy rainfall. Keep the harvested pods of garden peas in safer place immediately.

### Agromet advisories for likely impact of Thunderstorm / Gusty Winds

- Shift the harvested produce in safer places or cover the produce with tarpaulin sheets in the fields. Tie the harvested crops properly and cover them to minimise the risk of displacement due to strong surface winds.
- Provide mechanical support to horticultural crops and staking or support to vegetables and young fruit plants / fruit-bearing plants to avoid lodging due to strong winds.
- **Livestock / Poultry**
- Keep the animals inside the shed during Heavy Rainfall/Hailstorm period and provide them balanced feed. Store feed and fodder in a safe place to prevent spoilage.

### Legends & abbreviations:

- **Heavy Rain:**64.5-115.5mm; **Very Heavy Rain:**115.6-204.4mm; **Extremely Heavy Rain:** >204.4mm.
- **Obsy:** Observatory; Automatic Weather Station; **ARG:** Automatic Rain Gauge; **dist:** District; **NH:** National Highway; **KVK:** Krishi Vigyan Kendra; **DVC:** Damodar Valley Corporation; **PTO:** Part Time Office, **Aero:** Aerodrome, **IAF:** Indian Air Force.
- **Region wise classification of meteorological Sub-Divisions:**
- **Northwest India:** Western Himalayan Region (Jammu-Kashmir-Ladakh-Gilgit-Baltistan-Muzaffarabad, Himachal Pradesh and Uttarakhand); Punjab, Haryana-Chandigarh-Delhi; West Uttar Pradesh, East Uttar Pradesh, West Rajasthan and East Rajasthan.
- **Central India:** West Madhya Pradesh, East Madhya Pradesh, Vidarbha and Chhattisgarh.
- **East India:** Bihar, Jharkhand, Sub-Himalayan West Bengal & Sikkim; Gangetic West Bengal, Odisha and Andaman & Nicobar Islands.
- **Northeast India:** Arunachal Pradesh, Assam & Meghalaya and Nagaland, Manipur, Mizoram & Tripura.
- **West India:** Gujarat Region, Saurashtra & Kutch, Konkan & Goa, Madhya Maharashtra and Marathwada.
- **South India:** Coastal Andhra Pradesh & Yanam, Telangana, Rayalaseema, Coastal Karnataka, North Interior Karnataka, South Interior Karnataka, Kerala & Mahe, Tamil Nadu, Puducherry & Karaikal and Lakshadweep.

\*Red color warning does not mean "Red Alert" Red color warning means "Take Action"

Forecast and warning for any day is valid from 0830 hours IST of day till 0830 hours IST of next day

For more details kindly visit <https://mausam.imd.gov.in> or contact 011-2434-4599

(Service to the nation since 1875)

## LEGENDS

- 1 अंडमान और निकोबार द्वीप समुह
- 2 अरुणाचल प्रदेश
- 3 असम और मेघालय
- 4 नागालैंड मनीपुर मीजोरम और त्रिपुरा
- 5 उप हिमालय पश्चिम बंगाल एवं सिक्किम
- 6 पश्चिम बंगाल
- 7 ओडिसा
- 8 झारखंड
- 9 बिहार
- 10 पूर्वी उत्तर प्रदेश
- 11 पश्चिम उत्तर प्रदेश
- 12 उत्तराखंड
- 13 हरियाणा चंडिगढ़ एवं दिल्ली
- 14 पंजाब
- 15 हिमाचल प्रदेश
- 16 जम्मू एवं कश्मीर एवं लद्दाख
- 17 पश्चिम राजस्थान
- 18 पूर्वी राजस्थान
- 19 पश्चिम मध्य प्रदेश
- 20 पूर्वी मध्य प्रदेश
- 21 गुजरात क्षेत्र
- 22 सौराष्ट्र एवं कच्छ
- 23 कोंकण एवं गोवा
- 24 मध्य महाराष्ट्र
- 25 मराठावाडा
- 26 विदर्भ
- 27 छत्तीसगढ़
- 28 तटीय आंध्र प्रदेश एवं यनम
- 29 तेलंगाना
- 30 रायलसीमा
- 31 तमिलनाडु, पुदुचेरी एवं कराईकल
- 32 तटिय कर्नाटक
- 33 आंतरिक उत्तरी कर्नाटक
- 34 आंतरिक दक्षिणी कर्नाटक
- 35 केरल एवं माहे
- 36 लक्षद्वीप



1. Andaman & Nicobar Islands
2. Arunachal Pradesh
3. Assam & Meghalaya
4. Nagaland, Manipur, Mizoram & Tripura
5. Sub-Himalayan West Bengal & Sikkim
6. Gangetic West Bengal
7. Orissa
8. Jharkhand
9. Bihar
10. East Uttar Pradesh
11. West Uttar Pradesh
12. Uttarakhand
13. Haryana, Chd & Delhi
14. Punjab
15. Himachal Pradesh
16. Jammu & Kashmir and Ladakh
17. West Rajasthan
18. East Rajasthan
19. West Madhya Pradesh
20. East Madhya Pradesh
21. Gujarat
22. Saurashtra
23. Konkan & Goa
24. Madhya Maharashtra
25. Marathawada
26. Vidharbha
27. Chhattisgarh
28. Coastal Andhra Pradesh & Yanam
29. Telangana
30. Rayalaseema
31. Tamilnadu, Puducherry & Karaikal
32. Coastal Karnataka
33. North Interior Karnataka
34. South Interior Karnataka
35. Kerala & Mahe
36. Lakshadweep

## SPATIAL DISTRIBUTION (% of Stations reporting)

% Stations	Category	% Stations	Category
76-100	Widespread (WS/ Most Places)	26-50	Scattered (SCT/ A Few Places)
51-75	Fairly Widespread (FWS/ Many Places)	1-25	Isolated (ISOL)

### Subdivision Colour

- NO WARNING
- WATCH (BE UPDATED)
- ALERT (BE PREPARED TO TAKE ACTION)
- WARNING (TAKE ACTION)

### Probabilistic Forecast

Terms	Probability of Occurrence (%)
Unlikely	< 25
Likely	25 - 50
Very Likely	50 - 75
Most Likely	> 75

- |                          |                 |                      |                    |
|--------------------------|-----------------|----------------------|--------------------|
| Heavy Rain               | Very Heavy Rain | Extremely Heavy Rain | Heavy Snow         |
| Thunderstorm & Lightning | Hailstorm       | Dust Storm           | Dust Raising Winds |
| Strong surface winds     | Heat Wave       | Hot Day              | Warm Night         |
| Cold Wave                | Cold Day        | Ground Frost         | Fog                |
| Hot & Humid              |                 |                      |                    |

\*Red color warning does not mean "Red Alert" Red color warning means "Take Action"

Forecast and warning for any day is valid from 0830 hours IST of day till 0830 hours IST of next day

For more details kindly visit <https://mausam.imd.gov.in> or contact 011-2434-4599

(Service to the nation since 1875)

## LEGENDS

### WARNING

WARNING (TAKE ACTION)
ALERT ( BE PREPARED)
WATCH (BE UPDATED)
NO WARNING ( NO ACTION)

### Probabilistic Forecast

Terms	Probability of Occurrence (%)
Unlikely	< 25
Likely	25 - 50
Very Likely	50 - 75
Most Likely	> 75



Rain/ Snow \*

Heavy: 64.5 to 115.5 mm/cm *
Very Heavy: 115.6 to 204.4 mm/cm*
Extremely Heavy: > 204.4 mm/cm *



Heat Wave

When maximum temperature of a station reaches  $\geq 40^{\circ}\text{C}$  for plains and  $\geq 30^{\circ}\text{C}$  for hilly regions  
(a) Based on Departure from normal

Heat Wave: Maximum Temperature Departure from normal $4.5^{\circ}\text{C}$ to $6.4^{\circ}\text{C}$ .
Severe Heat Wave: Maximum Temperature Departure from normal $\geq 6.5^{\circ}\text{C}$

(b). Based on Actual maximum temperature

Heat Wave: When actual maximum temperature $\geq 45^{\circ}\text{C}$ .
Severe Heat Wave: When actual maximum temperature $\geq 47^{\circ}\text{C}$

(c). Criteria for heat wave for coastal stations

When maximum temperature departure is  $> 4.5^{\circ}\text{C}$  from normal. Heat Wave may be described provided maximum temperature  $\geq 37^{\circ}\text{C}$



Warm Night

When maximum temperature remains  $40^{\circ}\text{C}$

Warm Night: When minimum temperature departure $4.5^{\circ}\text{C}$ to $6.4^{\circ}\text{C}$ .
Severe Warm Night: When minimum temperature departure $> 6.4^{\circ}\text{C}$ .



Cold Wave

When minimum temperature of a station  $\leq 10^{\circ}\text{C}$  for plains and  $\leq 0^{\circ}\text{C}$  for hilly regions.

(a). Based on departure

Cold Wave: Minimum Temperature Departure from normal $-4.5^{\circ}\text{C}$ to $-6.4^{\circ}\text{C}$ .
Severe Cold Wave: Minimum Temperature Departure from normal $\leq -6.5^{\circ}\text{C}$

(b) Based on actual Minimum Temperature (for Plains only)

Cold Wave : When Minimum Temperature is $\leq 4.0^{\circ}\text{C}$
Severe Cold Wave: When Minimum Temperature is $\leq 2.0^{\circ}\text{C}$

(c) For Coastal Stations

When Minimum Temperature departure is  $\leq -4.5^{\circ}\text{C}$  & actual Minimum Temperature is  $\leq 15^{\circ}\text{C}$



Cold Day

When minimum temperature of a station  $\leq 10^{\circ}\text{C}$  for plains and  $\leq 0^{\circ}\text{C}$  for hilly regions  
Based on departure

Cold Day: Maximum Temperature Departure from normal $-4.5^{\circ}\text{C}$ to $-6.4^{\circ}\text{C}$ .
Severe Cold Day: Maximum Temperature Departure from normal $\leq -6.5^{\circ}\text{C}$



Fog

Phenomenon of small droplets suspended in air and the horizontal visibility  $< 1\text{km}$

Moderate Fog: When the visibility between 500-200 metres
Dense Fog: when the visibility between 50- 200 metres
Very Dense Fog: when the visibility $< 50$ metres



Thunderstorm

Sudden electrical discharges manifested by a flash of light (Lightning) and a sharp rumbling sound (thunder)



Dust/Sand Storm

An ensemble of particles of dust or sand energetically lifted to great heights by a strong and turbulent wind.



Frost

Ice deposits on ground

Air temperature $\leq 4^{\circ}\text{C}$ ( over Plains)
---



Squall

A strong wind that rises suddenly, lasts for atleast 1 minute.

Moderate: Wind speed 52-61 kmph
Severe: Wind speed 62-87 kmph
Very Severe: Wind speed $> 87$ kmph



Sea State

Effect of various waves in the sea over specific area

Rough to very rough: Wind speed 41-62 kmph (22-33 knots) & Wave height 2.5-6 metre
High to very high: Wind speed 63-117 kmph ( 34-63 knots) & Wave height 6-14 metre
Phenomenal: Wind speed $> 117$ kmph ( $> 63$ knots) & Wave height $> 14$ metre



Cyclone

Cyclonic Storm: Wind speed 62-87 kmph (34-47 knots)
Severe Cyclonic Storm: Wind speed 88-117 kmph (48-63 knots)
Very Severe Cyclonic Storm: Wind speed 118-165 kmph (64 - 89 knots)
Extremely Severe Cyclonic Storm: Wind speed 166-220 kmph (90 -119 knots)
Super Cyclone Storm: Wind speed $> 220$ kmph ( $> 119$ knots)

\*Red color warning does not mean "Red Alert" Red color warning means "Take Action"

Forecast and warning for any day is valid from 0830 hours IST of day till 0830 hours IST of next day

For more details kindly visit <https://mausam.imd.gov.in> or contact 011-2434-4599

(Service to the nation since 1875)