

2025-07-22

Time of Issue: 13:30:00 hours IST
(Mid-Day)

ALL INDIA WEATHER SUMMARY AND FORECAST BULLETIN

Significant Weather Features

South Peninsular India:

- ✓ **Extremely heavy falls** very likely at isolated places over Telangana today.
- ✓ Isolated **heavy rainfall** likely over Kerala & Mahe, Karnataka, Tamil Nadu during 22nd-28th; Coastal Andhra Pradesh & Yanam, Telangana during 22nd-26th July with isolated **very heavy rainfall** over Coastal Karnataka on 22nd; Telangana on 23rd and Kerala during 25th-27th July.
- ✓ **Strong surface winds** (speed reaching 40-50 kmph) very likely over South Peninsular India during next 5 days.
- ✓ Light/moderate rainfall at most/many places over Kerala & Mahe, Lakshadweep, Karnataka, Rayalaseema, Coastal Andhra Pradesh & Yanam & Telangana during next 7 days.

West India:

- ✓ **Heavy to very heavy rainfall** likely at isolated places over Konkan & Goa, Ghat areas of Madhya Maharashtra during 22nd-28th July and **heavy rainfall** over Marathawada on 22nd & 26th; Gujarat State on 22nd & during 26th-28th July.
- ✓ Light/moderate rainfall at many/some places very likely over the region during next 5 days.

East & Central India:

- ✓ Isolated **heavy rainfall** very likely to continue over Madhya Pradesh, Vidarbha, Chhattisgarh, Odisha, Sub-Himalayan West Bengal & Sikkim during 22nd-28th; Gangetic West Bengal, Bihar, Jharkhand during 24th-28th July with isolated **very heavy rainfall over West Madhya Pradesh during 26th-28th; East Madhya Pradesh during 25th-28th; Vidarbha, Chhattisgarh during 22nd-26th; Jharkhand, Gangetic West Bengal & Odisha on 24th & 25th July.**
- ✓ Light/moderate rainfall at most/many places accompanied with thunderstorm, lightning & gusty winds (speed reaching 30-40 Kmph) likely over the region during next 7 days with **moderate lightning over Bihar on 24th & 25th July.**

Northwest India:

- ✓ Isolated **heavy rainfall** likely over Jammu and Kashmir during 22nd-24th; Himachal Pradesh on 22nd & during 26th-28th; Uttarakhand during 22nd-28th; Punjab, Haryana on 22nd, 23rd, 27th & 28th; Uttar Pradesh during 25th-28th; West Rajasthan on 27th & 28th and East Rajasthan on 23rd and during 26th-28th July with **very heavy rainfall over Jammu-Kashmir on 22nd & 23rd July.**
- ✓ Light/moderate rainfall at most/many places accompanied with thunderstorm, lightning likely over Western Himalayan region and some places over the plains during next 7 days.

Northeast India:

- ✓ Light/moderate rainfall at many/some places accompanied with **thunderstorm, lightning** likely to continue over Northeast India during next 7 days.
- ✓ Isolated **heavy rainfall** very likely over Arunachal Pradesh, Assam & Meghalaya, Nagaland & Tripura during 22nd -28th July with very heavy rainfall over Meghalaya on 23rd July.

***Red color warning does not mean "Red Alert" Red color warning means "Take Action"**

Forecast and warning for any day is valid from 0830 hours IST of day till 0830 hours IST of next day

For more details kindly visit <https://mausam.imd.gov.in> or contact 011-2434-4599

(Service to the nation since 1875)



❖ **Rainfall distribution** (from 0830 hours IST of yesterday to 0830 hours IST of today): **at most places** over Andaman & Nicobar Islands, Himachal Pradesh, Konkan & Goa, Marathwada, Coastal Andhra Pradesh & Yanam, Telangana, Coastal Karnataka, North Interior Karnataka, South Interior Karnataka, Kerala & Mahe and Lakshadweep; **at many places** over Arunachal Pradesh, Assam & Meghalaya, Nagaland, Manipur, Mizoram & Tripura, Uttarakhand, Punjab, Jammu-KashmirLadakh-Gilgit-Baltistan-Muzaffarabad, Gujarat Region and Chhattisgarh; **at a few places** over Sub Himalayan West Bengal & Sikkim, Gangetic West Bengal, Odisha, Jharkhand, West Uttar Pradesh, Haryana-Chandigarh-Delhi, East Madhya Pradesh, Saurashtra & Kutch, Madhya Maharashtra, Rayalaseema and Tamil Nadu, Puducherry & Karaikal; **at isolated places** over Bihar, East Uttar Pradesh, West Rajasthan, East Rajasthan and West Madhya Pradesh; **Dry** over rest of the country.

❖ **Significant rainfall recorded(in cm)** (from 0830 hours IST of yesterday to 0830 hours IST of today): **Marathwada**: Sonpeth (dist Parbhani) 17; Pathri (dist Parbhani) 12; Ardhapur (dist Nanded) 9; Bhum (dist Dharashiv) 8; Shirur Anantpal (dist Latur) 7; **Chhattisgarh**: Bhanpuri (dist Bastar) 12; **Gujarat Region**: Kapadvanj (dist Kheda) 12; Navasari AWS (dist Navsari) 9; Navsari (dist Navsari), Jalalpor (dist Navsari), Talod (dist Sabarkantha) 7 Each; **Konkan & Goa**: Santacruz (dist Mumbai Suburban), Murud (dist Raigad), Wada (dist Palghar) 11 Each; Kudal (dist Sindhudurg), Sawantwadi (dist Sindhudurg), Mapusa (dist North Goa) 10 Each; Alibag - IMD Part Time (dist Raigad), Savarde-arg (dist Ratnagiri) 9 Each; Sanguem (dist South Goa), Mhasla (dist Raigad) 8 Each; Guhagarh (dist Ratnagiri), Pernem (dist North Goa), Rajapur (dist Ratnagiri), Panjim (dist North Goa) 7 Each; **Jammu-KashmirLadakh-Gilgit-Baltistan-Muzaffarabad**: Katra (dist Reasi) 10; Rajouri (dist Rajouri) 9; Reasi ARG (dist Reasi) 8; **Punjab**: Salern AWS (dist Hoshiarpur) 10; Pau Ludhiana (dist Ludhiana) 7; **Odisha**: Malkangiri (dist Malkangiri) 10; Komna (dist Nawapara) 9; Kotpad (dist Koraput) 8; Kosagumda (dist Nawarangpur) 7; **Telangana**: Tandur (dist Vikarabad) 10; Kodangal(ARG) (dist Vikarabad), Eturnagaram (dist Mulugu), Nidamanur (dist Nalgonda), Bala Nagar (dist Mahabubnagar) 8 Each; Doma (dist Vikarabad), Gudurwrgl (dist Mahabubabad), Mulakalapalle (dist B. Kothagudem), Kodangal (dist Vikarabad), Sathupalle (dist Khammam), Nallabelly (dist Warangal), Enkuru (dist Khammam) 7 Each; **West Uttar Pradesh**: Etah (dist Etah) 9; **Himachal Pradesh**: Amb (dist Una) 9; Bharari (dist Hamirpur) 7; **Coastal Andhra Pradesh & Yanam**: Macherla (dist Palnadu) 8; Guntur (dist Guntur) 7; **North Interior Karnataka**: Sedam (dist Kalaburgi) 8; Shahpur (dist Yadgir) 7; **Madhya Maharashtra**: Igatpuri (dist Nashik) 8; **Saurashtra & Kutch**: Talaja (dist Bhavnagar) 8; **Haryana-Chandigarh-Delhi**: Green Field Ps (dist North East Delhi) 8; Tajewala (dist Yamuna Nagar) 7; **East Uttar Pradesh**: Gonda CWC (dist Gonda) 8; **Bihar**: Bikram (dist Patna) 8; **Sub Himalayan West Bengal & Sikkim**: Jiti T.e. (dist Jalpaiguri) 8; **Assam & Meghalaya**: Goibargaon (dist Baksa), Hangrabari ARG (dist Kamrup Metropolitan) 8 Each.

❖ **Heavy Rainfall observed** (from 0830 hours IST of yesterday to 0830 hours IST of today): **Heavy to very heavy rain** at isolated places over Gujarat Region, Marathwada and Chhattisgarh. **Heavy rain** at isolated places over Assam & Meghalaya, Sub Himalayan West Bengal & Sikkim, Odisha, Bihar, East Uttar Pradesh, West Uttar Pradesh, Uttarakhand, Haryana-Chandigarh-Delhi, Punjab, Himachal Pradesh, Jammu-KashmirLadakh-Gilgit-Baltistan-Muzaffarabad, Saurashtra & Kutch, Konkan & Goa, Madhya Maharashtra, Coastal Andhra Pradesh & Yanam, Telangana and North Interior Karnataka.

❖ **Minimum Temperature Departures (as on 22-07-2025)**: **markedly above normal(> 5.1°C)** at few places over East Madhya Pradesh; at isolated places over Assam & Meghalaya, Sub Himalayan West Bengal & Sikkim, Odisha, East Uttar Pradesh, West Uttar Pradesh, Himachal Pradesh, Jammu-KashmirLadakh-Gilgit-Baltistan-Muzaffarabad, West Madhya Pradesh and Saurashtra & Kutch. **appreciably above normal(3.1°C to 5.0°C)** at isolated places over Andaman & Nicobar Islands, Nagaland, Manipur, Mizoram & Tripura, Gangetic West Bengal, Bihar, West Rajasthan and Gujarat Region. **above normal(1.6°C to 3.0°C)** at many places over Vidarbha; at few places over East Rajasthan and Chhattisgarh; at isolated places over Jharkhand, Uttarakhand, Madhya Maharashtra and Tamil Nadu, Puducherry & Karaikal. **near normal(-1.5°C to 1.5°C)** at many places over Haryana-Chandigarh-Delhi, Punjab and Coastal Andhra Pradesh & Yanam; at most places over Arunachal Pradesh, Konkan & Goa, Marathwada, Telangana, Rayalaseema, Coastal Karnataka, North Interior Karnataka, South Interior Karnataka and Kerala & Mahe; at few places over Lakshadweep. **The lowest minimum temperature** of 18.0°C is reported at SHIMOGA (KARNATAKA) over the Plains of India.

❖ **Maximum Temperature Departures (as on 21-07-2025)**: **markedly above normal(> 5.1°C)** at isolated places over Sub Himalayan West Bengal & Sikkim and Gangetic West Bengal. **appreciably above normal(3.1°C to 5.0°C)** at many places over Marathwada; at most places over Vidarbha; at few places over Assam & Meghalaya, Jammu-KashmirLadakh-Gilgit-Baltistan-Muzaffarabad and West Madhya Pradesh; at isolated places over Odisha, Bihar, East Uttar Pradesh, East Madhya Pradesh, Madhya Maharashtra, Chhattisgarh, Telangana and Tamil Nadu, Puducherry & Karaikal. **above normal(1.6°C to 3.0°C)** at many places over Nagaland, Manipur, Mizoram & Tripura; at few places over Arunachal Pradesh; at isolated places over West Uttar Pradesh, Uttarakhand, East Rajasthan, Saurashtra & Kutch, Coastal Andhra Pradesh & Yanam and North Interior Karnataka. **near normal(-1.5°C to 1.5°C)** at many places over Jharkhand and Lakshadweep; at few places over Andaman & Nicobar Islands, Gujarat Region, Coastal Karnataka, South Interior Karnataka and Kerala & Mahe; at isolated places over Haryana-Chandigarh-Delhi, Punjab, Himachal Pradesh, West Rajasthan and Konkan & Goa. **The highest maximum temperature** of 38.0°C was reported at TANJAVUR (TAMIL NADU).

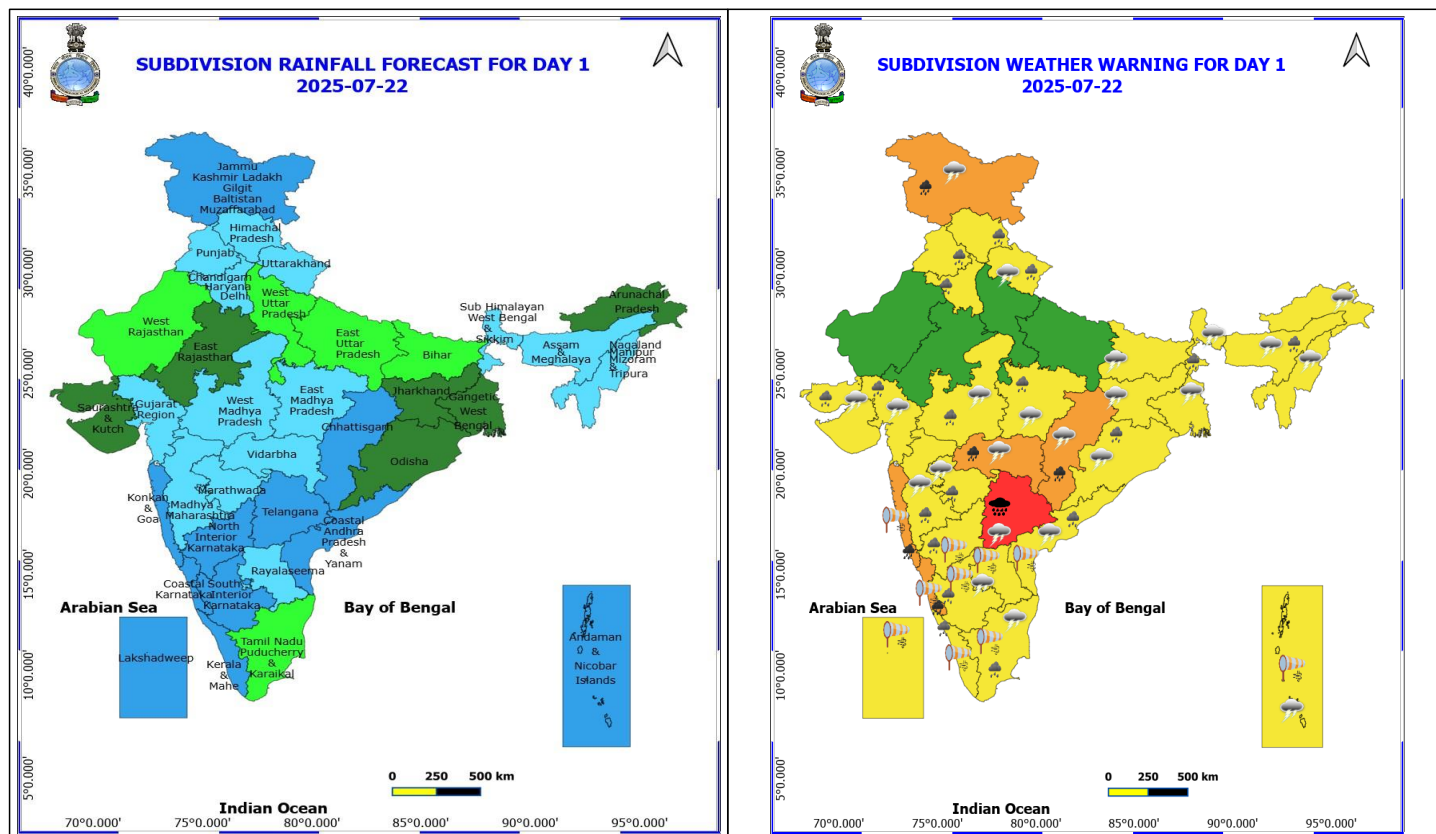


Meteorological Analysis (Based on 0830 hours IST)

- ❖ The **monsoon trough** at mean sea level now passes through Sri Ganganagar, Rohtak, Lucknow, Varanasi, Daltonganj, Jamshedpur, Contai and thence eastwards to northeast Bay of Bengal.
- ❖ The **upper air cyclonic circulation** over Coastal Andhra Pradesh & adjoining south Odisha coasts now lies over north Coastal Andhra Pradesh & neighbourhood and extends upto 5.8 km above mean sea level tilting southeastwards with height.
- ❖ The **east-west trough** from North Interior Karnataka to central parts of Coastal Andhra Pradesh roughly along Lat. 15°N at 5.8 km above mean sea level persists.
- ❖ The **upper air cyclonic circulation** over south Chhattisgarh & neighbourhood extending upto 1.5 km above mean sea level persists.
- ❖ The **upper air cyclonic circulation** over northeast Jharkhand & neighbourhood extending upto 1.5 km above mean sea level persists.
- ❖ A **trough** runs roughly along Long. 94°E to the north of Lat. 24°N at 1.5 km above mean sea level.
- ❖ A **cyclonic circulation** (Remnant of Tropical Cyclone **Wipha**) is likely to emerge over north Bay of Bengal during next 24 hours. Under its influence, a **Low Pressure area** is likely to form over the same region in the subsequent 48 hours.
- ❖ The **upper air cyclonic circulation** over northeast Assam & neighbourhood extending upto 1.5 km above mean sea level has become less marked.

Weather Outlook for subsequent 3 days

- ❖ **Fairly widespread to widespread** rainfall very likely over most parts of the country except Tamil Nadu where isolated to scattered rainfall is likely.



22 July (Day 1)

- ❖ **Heavy to Very Heavy Rainfall with isolated Extremely Heavy Rainfall** very likely at isolated places over Telangana.
- ❖ **Heavy to Very Heavy Rainfall** very likely at isolated places over Chhattisgarh, Jammu-Kashmir-Ladakh-Gilgit-Baltistan-Muzaffarabad, Konkan & Goa, Coastal Karnataka and Vidarbha.
- ❖ **Heavy Rainfall** very likely at isolated places over Assam & Meghalaya, Coastal Andhra Pradesh, Gujarat State, Haryana, Chandigarh & Delhi, Himachal Pradesh, Interior Karnataka, Kerala & Mahe, Madhya Maharashtra, Madhya Pradesh, Marathwada, Odisha, Punjab, Sub Himalayan West Bengal & Sikkim, Tamil Nadu Puducherry & Karaikal and Uttarakhand.
- ❖ **Thunderstorm accompanied with lightning & gusty winds(40-50kmph)** very likely at isolated places over Andaman & Nicobar Islands.
- ❖ **Thunderstorm accompanied with lightning & gusty winds(30-40kmph)** very likely at isolated places over Bihar, Jammu-Kashmir-Ladakh-Gilgit-Baltistan-Muzaffarabad, Jharkhand, Odisha, Uttarakhand and West Bengal & Sikkim.
- ❖ **Thunderstorm accompanied with Lightning** very likely at isolated places over Andhra Pradesh, Arunachal Pradesh, Assam & Meghalaya, Chhattisgarh, Gujarat State, Madhya Pradesh, Maharashtra, Nagaland, Manipur, Mizoram and Tripura, Tamil Nadu Puducherry & Karaikal and Telangana.
- ❖ **Strong Surface Winds** very likely at isolated places over Andaman & Nicobar Islands, Andhra Pradesh, Karnataka, Kerala & Mahe, Konkan & Goa, Lakshadweep and Tamil Nadu Puducherry & Karaikal.
- **Squally wind speed reaching 45 kmph to 55 kmph gusting to 65 kmph** is likely to prevail along and off

*Red color warning does not mean "Red Alert" Red color warning means "Take Action"

Forecast and warning for any day is valid from 0830 hours IST of day till 0830 hours IST of next day

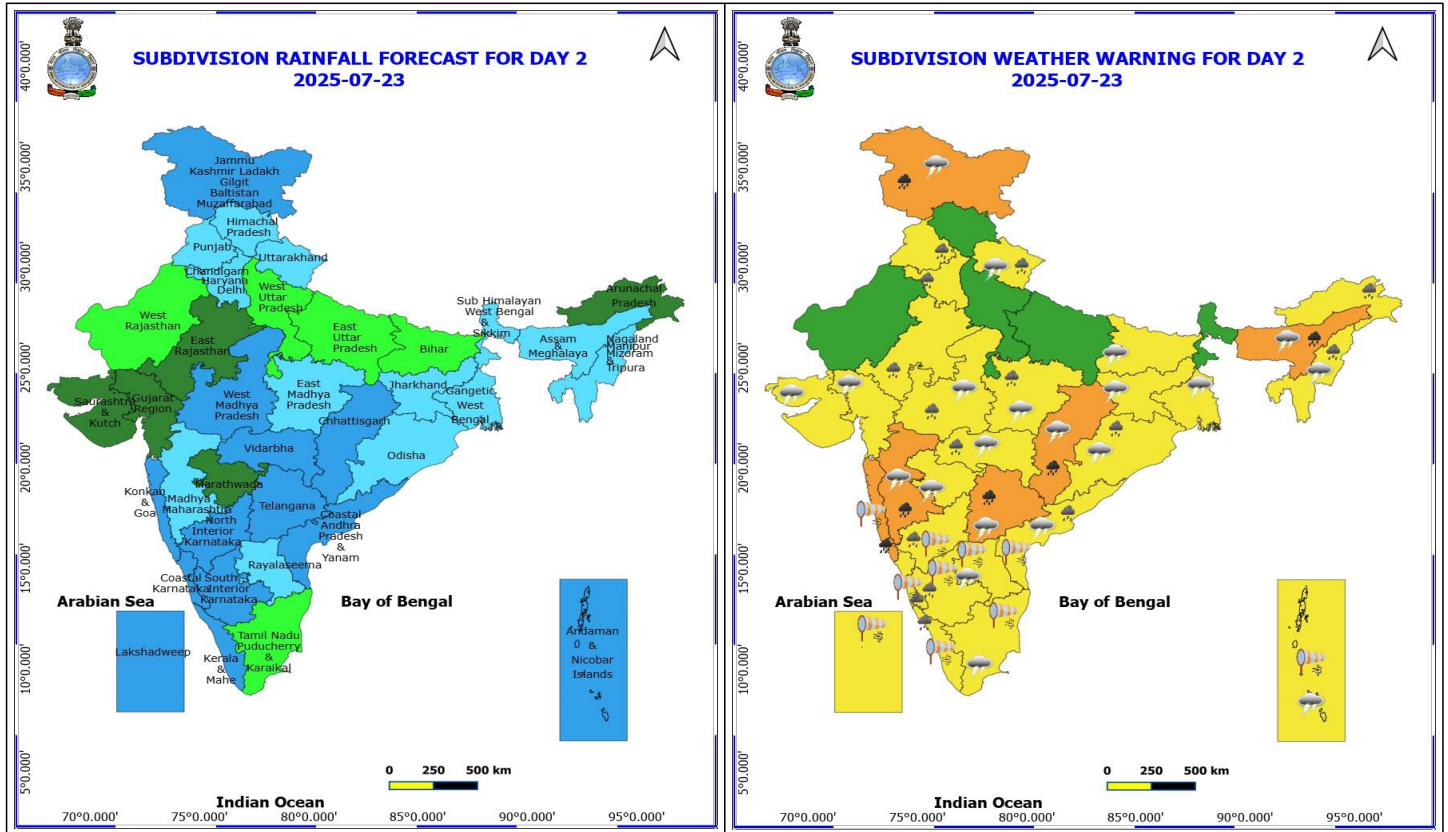
For more details kindly visit <https://mausam.imd.gov.in> or contact 011-2434-4599

(Service to the nation since 1875)



Somalia, Yemen & south Oman coasts, most parts of westcentral Arabian Sea & adjoining parts of eastcentral Arabian Sea, some parts of southwest Arabian Sea.

- ♦ **Squally weather with wind speed 40 - 50 kmph gusting to 60 kmph** likely to prevail over many parts of eastcentral Arabian Sea & adjoining, some parts of westcentral Arabian Sea, northern parts of southeast Arabian Sea and adjoining southwest Arabian Sea, along and off Konkan & Goa, Kerala, Karnataka coasts, Tamil Nadu, Andhra Pradesh coasts, over Lakshadweep, Maldives, Comorin areas, south Bay of Bengal & most parts of central Bay of Bengal, over Gulf of Mannar, along and off Sri Lanka coast, over Andaman Sea.
- ♦ **Squally weather with wind speed 45 - 55 kmph gusting to 65 kmph** likely to prevail over many parts of central and adjoining south Bay of Bengal, many parts of north Andaman Sea.



23 July (Day 2)

- ❖ **Heavy to Very Heavy Rainfall** very likely at isolated places over Assam & Meghalaya, Chhattisgarh, Jammu-Kashmir-Ladakh-Gilgit-Baltistan-Muzaffarabad, Konkan & Goa, Madhya Maharashtra and Telangana.
- ❖ **Heavy Rainfall** very likely at isolated places over Arunachal Pradesh, Coastal Andhra Pradesh, East Rajasthan, Haryana, Chandigarh & Delhi, Karnataka, Kerala & Mahe, Madhya Pradesh, Nagaland, Manipur, Mizoram and Tripura, Odisha, Punjab, Uttarakhand and Vidarbha.
- ❖ **Thunderstorm accompanied with lightning & gusty winds(40-50kmph)** very likely at isolated places over Andaman & Nicobar Islands.
- ❖ **Thunderstorm accompanied with lightning & gusty winds(30-40kmph)** very likely at isolated places over Bihar, Gangetic West Bengal, Jammu-Kashmir-Ladakh-Gilgit-Baltistan-Muzaffarabad, Jharkhand, Odisha and Uttarakhand.
- ❖ **Thunderstorm accompanied with Lightning** very likely at isolated places over Andhra Pradesh, Assam & Meghalaya, Chhattisgarh, Gujarat State, Madhya Pradesh, Maharashtra, Nagaland, Manipur, Mizoram and Tripura, Tamil Nadu Puducherry & Karaikal and Telangana.
- ❖ **Strong Surface Winds** very likely at isolated places over Andaman & Nicobar Islands, Andhra Pradesh, Karnataka, Kerala & Mahe, Konkan & Goa, Lakshadweep and Tamil Nadu Puducherry & Karaikal.
- **Squally wind speed reaching 45 kmph to 55 kmph gusting to 65 kmph** is likely to prevail along and off Somalia, Yemen & south Oman coasts, most parts of westcentral Arabian Sea & adjoining, many parts of eastcentral Arabian Sea, many parts of southwest Arabian Sea.
- **Squally weather with wind speed 40 - 50 kmph gusting to 60 kmph** likely to prevail over some parts of eastcentral Arabian Sea & adjoining, some parts of westcentral Arabian Sea, many parts of southeast

***Red color warning does not mean "Red Alert" Red color warning means "Take Action"**

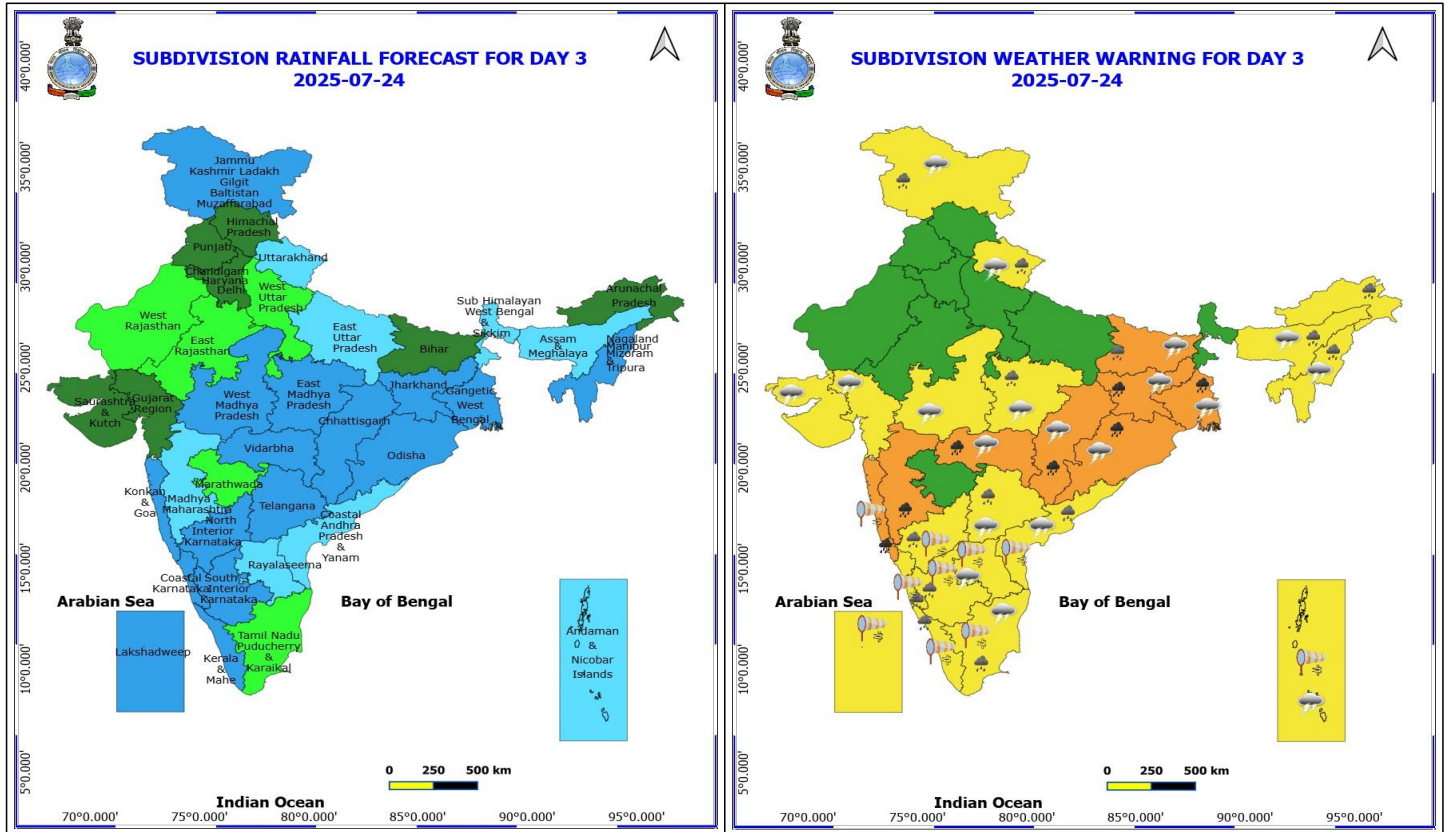
Forecast and warning for any day is valid from 0830 hours IST of day till 0830 hours IST of next day

For more details kindly visit <https://mausam.imd.gov.in> or contact 011-2434-4599

(Service to the nation since 1875)

Arabian Sea and adjoining southwest Arabian Sea, many parts of northeast Arabian Sea and adjoining northwest Arabian Sea, along and off Gujarat, Konkan, Goa, Kerala, Karnataka coasts, Tamil Nadu, Andhra Pradesh coasts, over Lakshadweep, Maldives, Comorin areas, south Bay of Bengal & most parts of central Bay of Bengal, over Gulf of Mannar, along and off Sri Lanka coast, over Andaman Sea.

- ♦ **Squally weather with wind speed 45 - 55 kmph gusting to 65 kmph** likely to prevail over many parts of central and adjoining south Bay of Bengal, many parts of north Andaman Sea.



24 July (Day 3)

- ❖ **Heavy to Very Heavy Rainfall** very likely at isolated places over Chhattisgarh, Gangetic West Bengal, Jharkhand, Konkan & Goa, Madhya Maharashtra, Odisha and Vidarbha.
- ❖ **Heavy Rainfall** very likely at isolated places over Arunachal Pradesh, Assam & Meghalaya, Bihar, Coastal Andhra Pradesh, East Madhya Pradesh, Jammu-Kashmir-Ladakh-Gilgit-Baltistan-Muzaffarabad, Karnataka, Kerala & Mahe, Nagaland, Manipur, Mizoram and Tripura, Tamil Nadu Puducherry & Karaikal, Telangana and Uttarakhand.
- ❖ **Thunderstorm accompanied with lightning & gusty winds(40-50kmph)** very likely at isolated places over Andaman & Nicobar Islands, Chhattisgarh and Vidarbha.
- ❖ **Thunderstorm accompanied with lightning & gusty winds(30-40kmph)** very likely at isolated places over Bihar, Gangetic West Bengal, Jammu-Kashmir-Ladakh-Gilgit-Baltistan-Muzaffarabad, Jharkhand, Odisha and Uttarakhand.
- ❖ **Thunderstorm accompanied with Lightning** very likely at isolated places over Andhra Pradesh, Assam & Meghalaya, Gujarat State, Madhya Pradesh, Nagaland, Manipur, Mizoram and Tripura, Tamil Nadu Puducherry & Karaikal and Telangana.
- ❖ **Strong Surface Winds** very likely at isolated places over Andaman & Nicobar Islands, Andhra Pradesh, Karnataka, Kerala & Mahe, Konkan & Goa, Lakshadweep and Tamil Nadu Puducherry & Karaikal.
- **Squally wind speed reaching 45 kmph to 55 kmph gusting to 65 kmph** is likely to prevail along and off Somalia, Yemen & south Oman coasts, most parts of westcentral Arabian Sea & adjoining, many parts of eastcentral Arabian Sea, many parts of southwest Arabian Sea.
- **Squally weather with wind speed 40 - 50 kmph gusting to 60 kmph** likely to prevail over some parts of eastcentral Arabian Sea & adjoining, some parts of westcentral Arabian Sea, many parts of southeast

***Red color warning does not mean "Red Alert" Red color warning means "Take Action"**

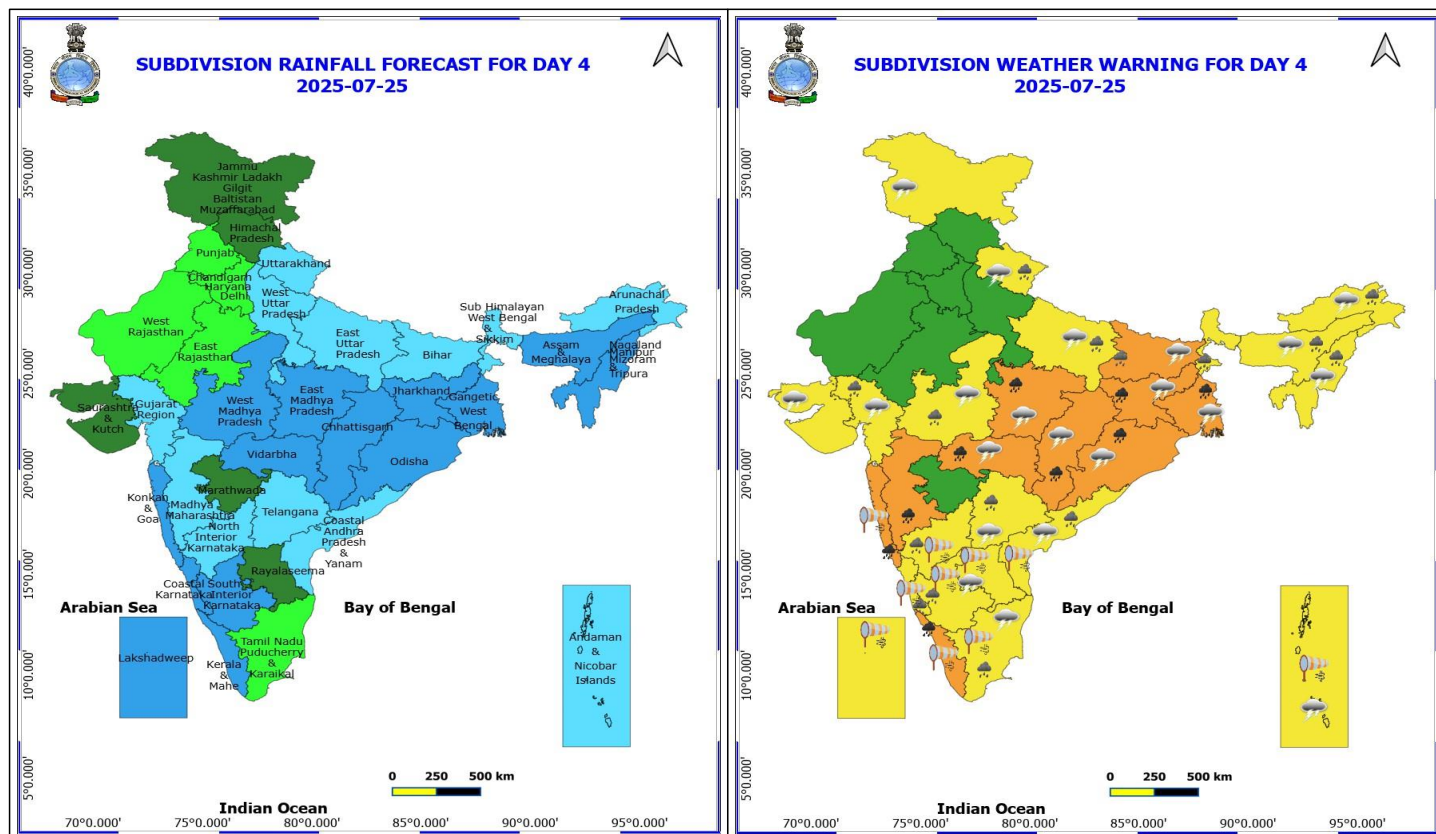
Forecast and warning for any day is valid from 0830 hours IST of day till 0830 hours IST of next day

For more details kindly visit <https://mausam.imd.gov.in> or contact 011-2434-4599

(Service to the nation since 1875)

Arabian Sea and adjoining southwest Arabian Sea, many parts of northeast Arabian Sea and adjoining northwest Arabian Sea, along and off Gujarat, Konkan, Goa, Kerala, Karnataka coasts, Tamil Nadu, Andhra Pradesh, Odisha, West Bengal, Bangladesh, Myanmar coasts, over Lakshadweep, Maldives, Comorin areas, south, central & north Bay of Bengal, over Gulf of Mannar, along and off Sri Lanka coast, over Andaman Sea.

- ♦ **Squally weather with wind speed 45 - 55 kmph gusting to 65 kmph** likely to prevail over most parts of central and many parts of south Bay of Bengal, many parts of north Andaman Sea.



25 July (Day 4)

- ❖ **Heavy to Very Heavy Rainfall** likely at isolated places over Chhattisgarh, East Madhya Pradesh, Gangetic West Bengal, Jharkhand, Kerala & Mahe, Konkan & Goa, Madhya Maharashtra, Odisha and Vidarbha.
- ❖ **Heavy Rainfall** likely at isolated places over Arunachal Pradesh, Assam & Meghalaya, Bihar, Coastal Andhra Pradesh, East Uttar Pradesh, Gujarat Region, Karnataka, Nagaland, Manipur, Mizoram and Tripura, Sub Himalayan West Bengal & Sikkim, Tamil Nadu Puducherry & Karaikal, Telangana, Uttarakhand and West Madhya Pradesh.
- ❖ **Thunderstorm accompanied with lightning & gusty winds(40-50kmph)** likely at isolated places over Chhattisgarh and Vidarbha.
- ❖ **Thunderstorm accompanied with lightning & gusty winds(30-40kmph)** likely at isolated places over Andaman & Nicobar Islands, Bihar, Gangetic West Bengal, Jammu-Kashmir-Ladakh-Gilgit-Baltistan-Muzaffarabad, Jharkhand, Odisha and Uttarakhand.
- ❖ **Thunderstorm accompanied with Lightning** likely at isolated places over Andhra Pradesh, Arunachal Pradesh, Assam & Meghalaya, East Uttar Pradesh, Gujarat State, Madhya Pradesh, Nagaland, Manipur, Mizoram and Tripura, Tamil Nadu Puducherry & Karaikal and Telangana.
- ❖ **Strong Surface Winds** likely at isolated places over Andaman & Nicobar Islands, Andhra Pradesh, Karnataka, Kerala & Mahe, Konkan & Goa, Lakshadweep and Tamil Nadu Puducherry & Karaikal.
- **Squally wind speed reaching 45 kmph to 55 kmph gusting to 65 kmph** is likely to prevail along and off Somalia, Yemen & south Oman coasts, most parts of westcentral Arabian Sea & adjoining, many parts of eastcentral Arabian Sea, many parts of southwest Arabian Sea.
- **Squally weather with wind speed 40 - 50 kmph gusting to 60 kmph** likely to prevail over some parts of eastcentral Arabian Sea & adjoining, some parts of westcentral Arabian Sea, many parts of southeast

***Red color warning does not mean "Red Alert" Red color warning means "Take Action"**

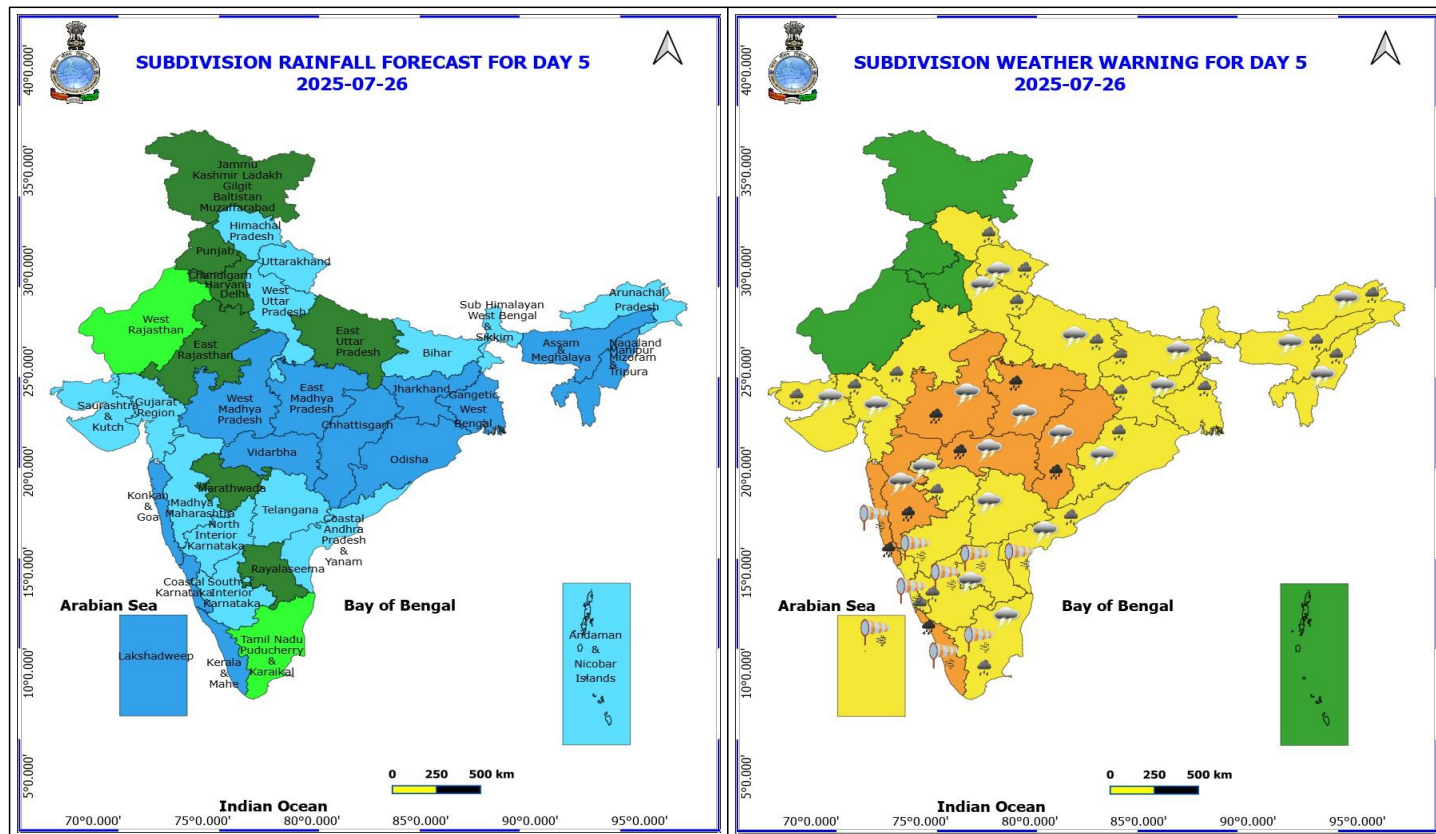
Forecast and warning for any day is valid from 0830 hours IST of day till 0830 hours IST of next day

For more details kindly visit <https://mausam.imd.gov.in> or contact 011-2434-4599

(Service to the nation since 1875)

Arabian Sea and adjoining southwest Arabian Sea, many parts of northeast Arabian Sea, along and off Gujarat, Konkan, Goa, Kerala, Karnataka coasts, Tamil Nadu, Andhra Pradesh, Odisha, West Bengal, Bangladesh, Myanmar coasts, over Lakshadweep, Maldives, Comorin areas, south, central & north Bay of Bengal, over Gulf of Mannar, along and off Sri Lanka coast, over Andaman Sea.

- ♦ **Squally weather with wind speed 45 - 55 kmph gusting to 65 kmph** likely to prevail over many parts of central and adjoining parts of south Bay of Bengal, many parts of north Andaman Sea.



26 July (Day 5)

- ❖ **Heavy to Very Heavy Rainfall** likely at isolated places over Chhattisgarh, Kerala & Mahe, Konkan & Goa, Madhya Maharashtra, Madhya Pradesh and Vidarbha.
- ❖ **Heavy Rainfall** likely at isolated places over Arunachal Pradesh, Assam & Meghalaya, Bihar, Coastal Andhra Pradesh, Coastal Karnataka, East Rajasthan, Gujarat State, Himachal Pradesh, Jharkhand, Marathwada, Nagaland, Manipur, Mizoram and Tripura, Odisha, South Interior Karnataka, Tamil Nadu Puducherry & Karaikal, Uttar Pradesh, Uttarakhand and West Bengal & Sikkim.
- ❖ **Thunderstorm accompanied with lightning & gusty winds(30-40kmph)** likely at isolated places over Bihar, Jharkhand, Odisha and Uttarakhand.
- ❖ **Thunderstorm accompanied with Lightning** likely at isolated places over Andhra Pradesh, Arunachal Pradesh, Assam & Meghalaya, Chhattisgarh, Gujarat State, Madhya Pradesh, Maharashtra, Nagaland, Manipur, Mizoram and Tripura, Tamil Nadu Puducherry & Karaikal, Telangana and Uttar Pradesh.
- ❖ **Strong Surface Winds** likely at isolated places over Andhra Pradesh, Karnataka, Kerala & Mahe, Konkan & Goa, Lakshadweep and Tamil Nadu Puducherry & Karaikal.
- **Squally wind speed reaching 45 kmph to 55 kmph gusting to 65 kmph** is likely to prevail along and off Somalia, Yemen & south Oman coasts, most parts of westcentral Arabian Sea & adjoining, many parts of eastcentral Arabian Sea, many parts of southwest Arabian Sea.
- **Squally weather with wind speed 40 - 50 kmph gusting to 60 kmph** likely to prevail over some parts of eastcentral Arabian Sea & adjoining, some parts of westcentral Arabian Sea, northern parts of southeast Arabian Sea, many parts of northeast Arabian Sea, along and off Gujarat, Konkan, Goa, Kerala, Karnataka coasts, Tamil Nadu, Andhra Pradesh, Odisha, West Bengal, Bangladesh, Myanmar coasts, over Lakshadweep, Maldives, Comorin areas, south, central & north Bay of Bengal, over Gulf of Mannar, along

***Red color warning does not mean "Red Alert" Red color warning means "Take Action"**

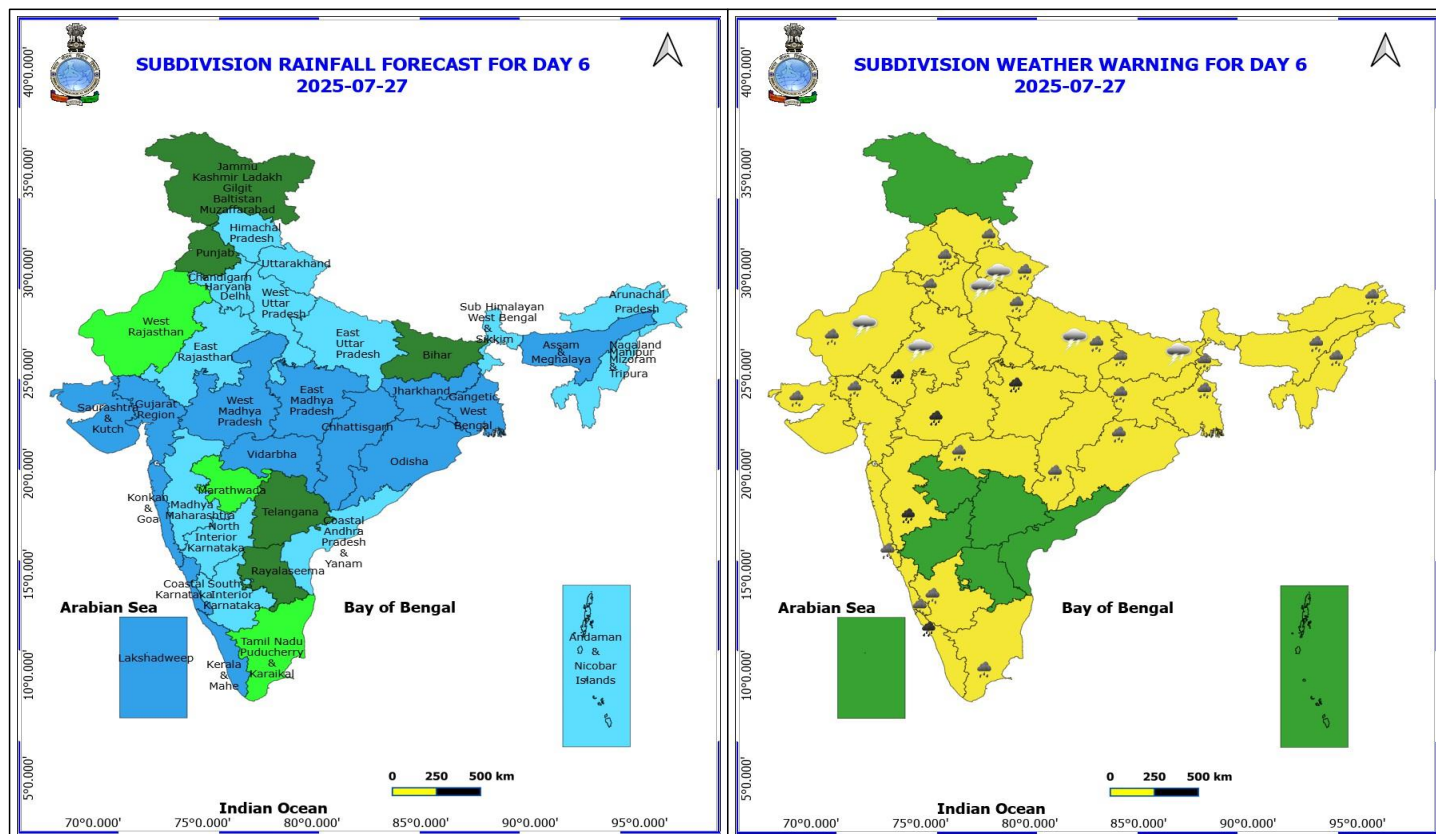
Forecast and warning for any day is valid from 0830 hours IST of day till 0830 hours IST of next day

For more details kindly visit <https://mausam.imd.gov.in> or contact 011-2434-4599

(Service to the nation since 1875)

and off Sri Lanka coast, over Andaman Sea.

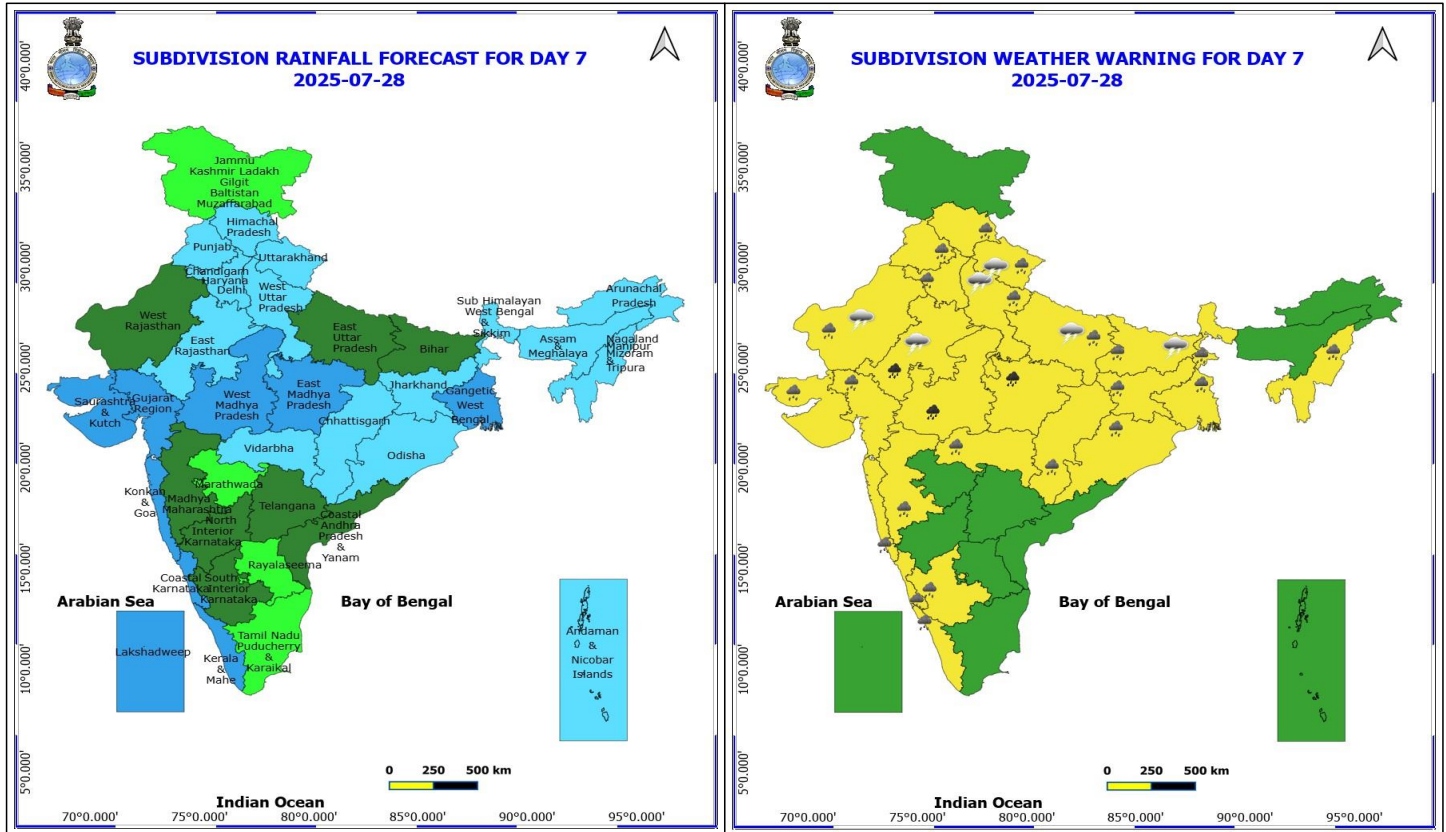
- **Squally weather with wind speed 45 - 55 kmph gusting to 65 kmph** likely to prevail over many parts of central and adjoining parts of south Bay of Bengal, many parts of north Andaman Sea.



27 July (Day 6)

- ❖ **Heavy to Very Heavy Rainfall** likely at isolated places over East Rajasthan, Kerala & Mahe, Madhya Maharashtra and Madhya Pradesh.
- ❖ **Heavy Rainfall** likely at isolated places over Arunachal Pradesh, Assam & Meghalaya, Bihar, Chhattisgarh, Coastal Karnataka, Gujarat State, Haryana, Chandigarh & Delhi, Himachal Pradesh, Jharkhand, Konkan & Goa, Nagaland, Manipur, Mizoram and Tripura, Odisha, Punjab, South Interior Karnataka, Tamil Nadu Puducherry & Karaikal, Uttar Pradesh, Uttarakhand, Vidarbha, West Bengal & Sikkim and West Rajasthan.
- ❖ **Thunderstorm accompanied with lightning & gusty winds(30-40kmph)** likely at isolated places over Bihar and Uttarakhand.
- ❖ **Thunderstorm accompanied with Lightning** likely at isolated places over Rajasthan and Uttar Pradesh.

No Fishermen Warning



28 July (Day 7)

- ❖ **Heavy to Very Heavy Rainfall** likely at isolated places over Chhattisgarh, Kerala & Mahe, Konkan & Goa, Madhya Maharashtra, Madhya Pradesh and Vidarbha.
- ❖ **Heavy Rainfall** likely at isolated places over Arunachal Pradesh, Assam & Meghalaya, Bihar, Coastal Andhra Pradesh, Coastal Karnataka, East Rajasthan, Gujarat State, Himachal Pradesh, Jharkhand, Marathwada, Nagaland, Manipur, Mizoram and Tripura, Odisha, South Interior Karnataka, Tamil Nadu Puducherry & Karaikal, Uttar Pradesh, Uttarakhand and West Bengal & Sikkim.
- ❖ **Thunderstorm accompanied with lightning & gusty winds(30-40kmph)** likely at isolated places over Bihar, Jharkhand, Odisha and Uttarakhand.
- ❖ **Thunderstorm accompanied with Lightning** likely at isolated places over Andhra Pradesh, Arunachal Pradesh, Assam & Meghalaya, Chhattisgarh, Gujarat State, Madhya Pradesh, Maharashtra, Nagaland, Manipur, Mizoram and Tripura, Tamil Nadu Puducherry & Karaikal, Telangana and Uttar Pradesh.
- ❖ **Strong Surface Winds** likely at isolated places over Andhra Pradesh, Karnataka, Kerala & Mahe, Konkan & Goa, Lakshadweep and Tamil Nadu Puducherry & Karaikal.

No Fishermen Warning

24 hours Outlook for the Flash Flood Risk (FFR) till 1130 IST of 23-07-2025 :

Low to Moderate flash flood risk likely over few watersheds & neighbourhoods of following Met Sub-divisions during next 24 hours.

Himachal Pradesh - Chamba, Kangra, Kinnaur, Kullu, Lahul&Spiti, Mandi, Shimla and Sirmaur districts.
Jammu & Kashmir & Ladakh - Anantnag, Doda, Jammu, Kathua, Kistwar, Kulgam, Punch, Rajouri, Ramban, Riasi, Samba, Udhampur, Kargil, Leh & Ladakh and Mirpur districts.

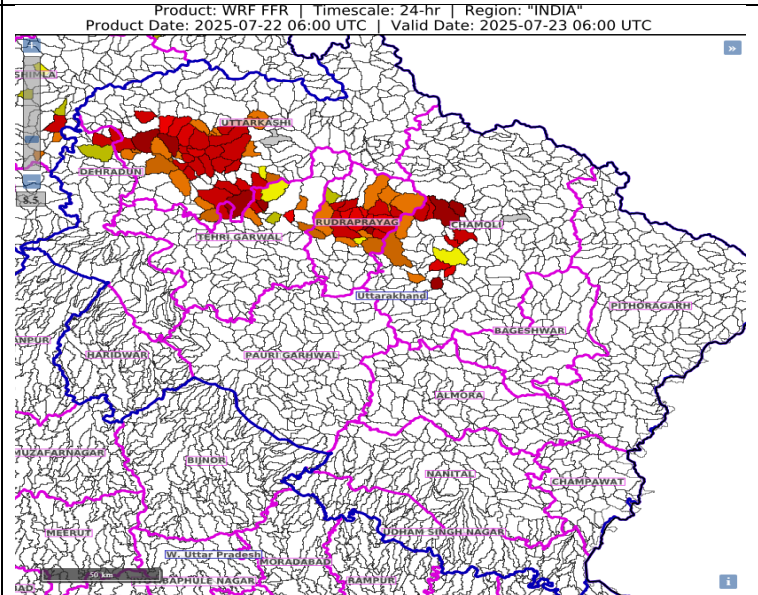
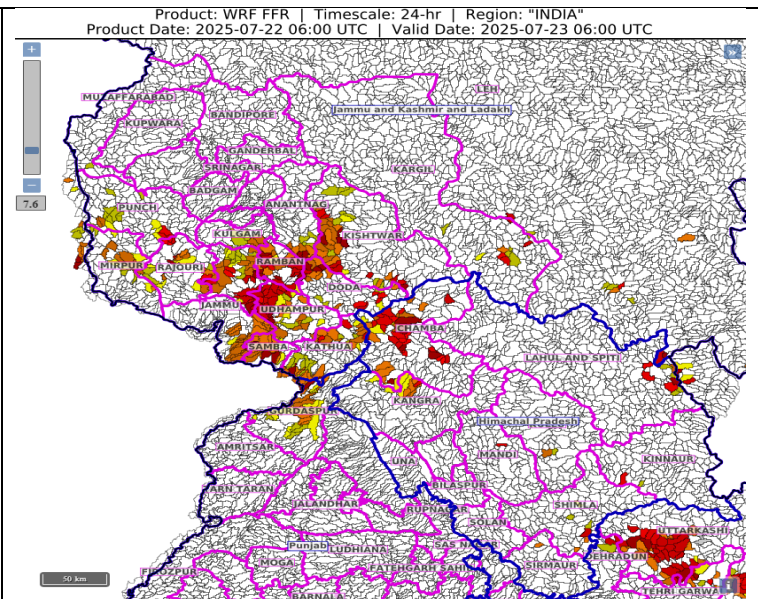
Surface runoff/ Inundation may occur at some fully saturated soils & low-lying areas over Area of Concern (AoC) as shown in map due to expected rainfall occurrence in next 24 hours.

24 hours Outlook for the Flash Flood Risk (FFR) till 1130 IST of 23-07-2025 :

Low to Moderate flash flood risk likely over few watersheds & neighbourhoods of following Met Sub-divisions during next 24 hours.

Uttarakhand - Chamoli, Dehradun, Rudraprayag, Tehri Garwal and Uttarkashi districts.

Surface runoff/ Inundation may occur at some fully saturated soils & low-lying areas over Area of Concern (AoC) as shown in map due to expected rainfall occurrence in next 24 hours.



***Red color warning does not mean "Red Alert" Red color warning means "Take Action"**

Forecast and warning for any day is valid from 0830 hours IST of day till 0830 hours IST of next day

For more details kindly visit <https://mausam.imd.gov.in> or contact 011-2434-4599

(Service to the nation since 1875)

24 hours Outlook for the Flash Flood Risk (FFR) till 1130 IST of 23-07-2025 :

Low to Moderate flash flood risk likely over few watersheds & neighbourhoods of following Met Sub-divisions during next 24 hours.

Coastal Karnataka - Dakshin Kannada, Udupi and Uttar Kannada districts.

Adjoining South Interior Karnataka - Chikmagalur, Hassan, Kodagu and Shimoga districts.

Konkan & Goa - North Goa, South Goa, Raigarh, Ratnagiri, Sindhudurg and Thane districts.

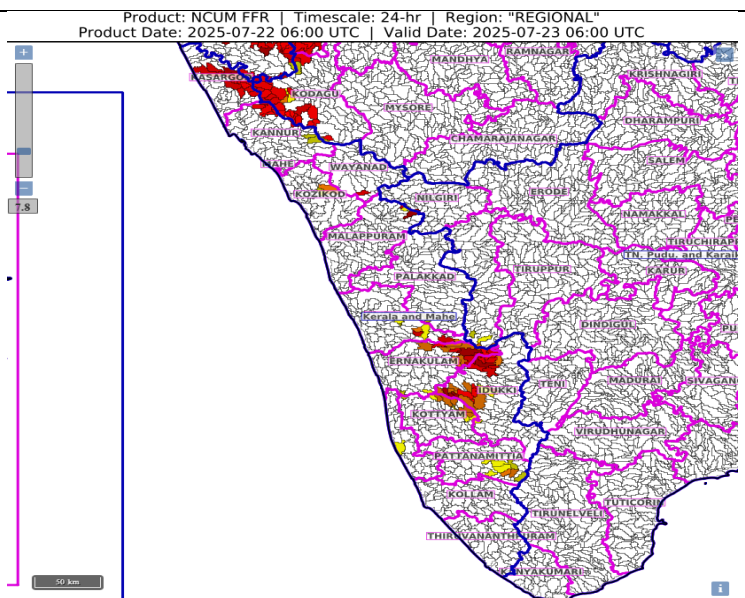
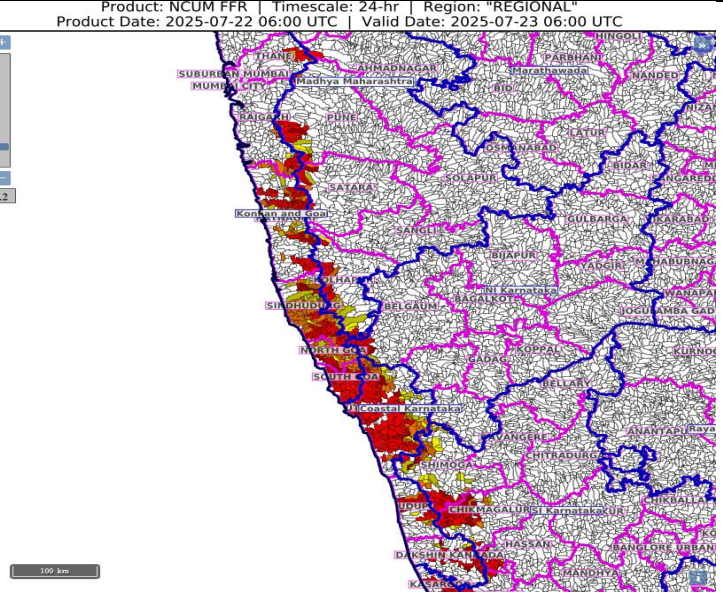
Surface runoff/ Inundation may occur at some fully saturated soils & low-lying areas over Area of Concern (AoC) as shown in map due to expected rainfall occurrence in next 24 hours.

24 hours Outlook for the Flash Flood Risk (FFR) till 1130 IST of 23-07-2025 :

Low to Moderate flash flood risk likely over few watersheds & neighbourhoods of following Met Sub-divisions during next 24 hours.

Extreme North and Central Parts of Kerala & Mahe - Alappuzha, Ernakulam, Idukki, Kannur, Kasargod, Kottiyam, Kozikod, Malappuram, Pattanamittia, Trishur and Wayanad districts.

Surface runoff/ Inundation may occur at some fully saturated soils & low-lying areas over Area of Concern (AoC) as shown in map due to expected rainfall occurrence in next 24 hours.



*Red color warning does not mean "Red Alert" Red color warning means "Take Action"

Forecast and warning for any day is valid from 0830 hours IST of day till 0830 hours IST of next day

For more details kindly visit <https://mausam.imd.gov.in> or contact 011-2434-4599

(Service to the nation since 1875)



Table-1

7 Days Rainfall Forecast

S.No.	Subdivision	22- Jul	23- Jul	24- Jul	25- Jul	26- Jul	27- Jul	28- Jul
		Day 1	Day 2	Day 3	Day 4	Day 5	Day 6	Day 7
1	ANDAMAN & NICOBAR ISLANDS	WS	WS	FWS	FWS	FWS	FWS	FWS
2	ARUNACHAL PRADESH	SCT	SCT	SCT	FWS	FWS	FWS	FWS
3	ASSAM & MEHGHALAYA	FWS	FWS	FWS	WS	WS	WS	FWS
4	N. M. M. & T.	FWS	FWS	WS	WS	WS	FWS	FWS
5	S.H. WEST BENGAL & SIKKIM	FWS	FWS	FWS	FWS	FWS	FWS	FWS
6	GANGETIC WEST BENGAL	SCT	FWS	WS	WS	WS	WS	WS
7	ODISHA	SCT	FWS	WS	WS	WS	WS	FWS
8	JHARKHAND	SCT	FWS	WS	WS	WS	WS	FWS
9	BIHAR	ISOL	ISOL	SCT	FWS	FWS	SCT	SCT
10	EAST UTTAR PRADESH	ISOL	ISOL	FWS	FWS	SCT	FWS	SCT
11	WEST UTTAR PRADESH	ISOL	ISOL	ISOL	FWS	FWS	FWS	FWS
12	UTTARAKHAND	FWS	FWS	FWS	FWS	FWS	FWS	FWS
13	HARYANA, CHD & DELHI	FWS	FWS	SCT	ISOL	SCT	FWS	FWS
14	PUNJAB	FWS	FWS	SCT	ISOL	SCT	SCT	FWS
15	HIMACHAL PRADESH	FWS	FWS	SCT	SCT	FWS	FWS	FWS
16	JAMMU AND KASHMIR AND LADAKH	WS	WS	WS	SCT	SCT	SCT	ISOL
17	WEST RAJASTHAN	ISOL	ISOL	ISOL	ISOL	ISOL	ISOL	SCT
18	EAST RAJASTHAN	SCT	SCT	ISOL	ISOL	SCT	FWS	FWS
19	WEST MADHYA PRADESH	FWS	WS	WS	WS	WS	WS	WS
20	EAST MADHYA PRADESH	FWS	FWS	WS	WS	WS	WS	WS
21	GUJRAT REGION	FWS	SCT	SCT	FWS	FWS	WS	WS
22	SAURASHTRA & KUTCH	SCT	SCT	SCT	SCT	FWS	WS	WS
23	KONKAN & GOA	WS	WS	WS	WS	WS	WS	WS
24	MADHYA MAHARASHTRA	FWS	FWS	FWS	FWS	FWS	FWS	SCT
25	MARATHWADA	FWS	SCT	ISOL	SCT	SCT	ISOL	ISOL
26	VIDARBHA	FWS	WS	WS	WS	WS	WS	FWS
27	CHATTISGARH	WS	WS	WS	WS	WS	WS	FWS
28	COASTAL ANDHRA PRADESH	WS	WS	FWS	FWS	FWS	FWS	SCT
29	TELANGANA	WS	WS	WS	FWS	FWS	SCT	SCT
30	RAYALASEEMA	FWS	FWS	FWS	SCT	SCT	SCT	ISOL
31	TAMILNADU & PUDUCHERRY	ISOL	ISOL	ISOL	ISOL	ISOL	ISOL	ISOL
32	COSTAL KARNATAKA	WS	WS	WS	WS	WS	WS	WS
33	NORTH INTERIOR KARNATAKA	WS	WS	WS	FWS	FWS	FWS	SCT
34	SOUTH INTERIOR KARNATAKA	WS	WS	WS	WS	FWS	FWS	SCT
35	KERALA	WS	WS	WS	WS	WS	WS	WS
36	LAKSHDWEEP	WS	WS	WS	WS	WS	WS	WS

Legend	Category	%Stations
WS	Widespread/Most Places	76-100
FWS	Fairly Widespread/Many Places	51-75
SCT	Scattered/ A Few Places	26-50
ISOL	Isolated Places	1-25
DRY	No Rain	0

*Red color warning does not mean "Red Alert" Red color warning means "Take Action"
Forecast and warning for any day is valid from 0830 hours IST of day till 0830 hours IST of next day
For more details kindly visit <https://mausam.imd.gov.in> or contact 011-2434-4599
(Service to the nation since 1875)

Fig. 1: Maximum Temperatures Dated 2025-07-22

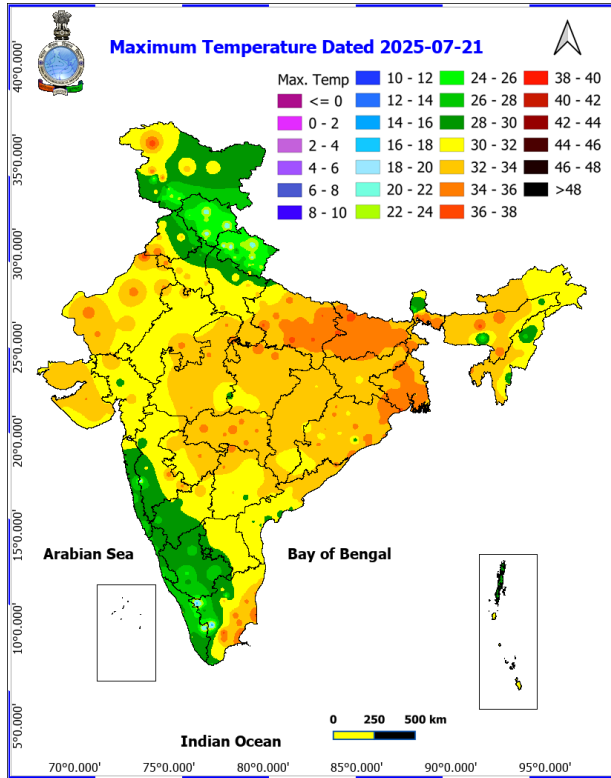


Fig. 2: Departure of Maximum Temp. Dated 2025-07-22

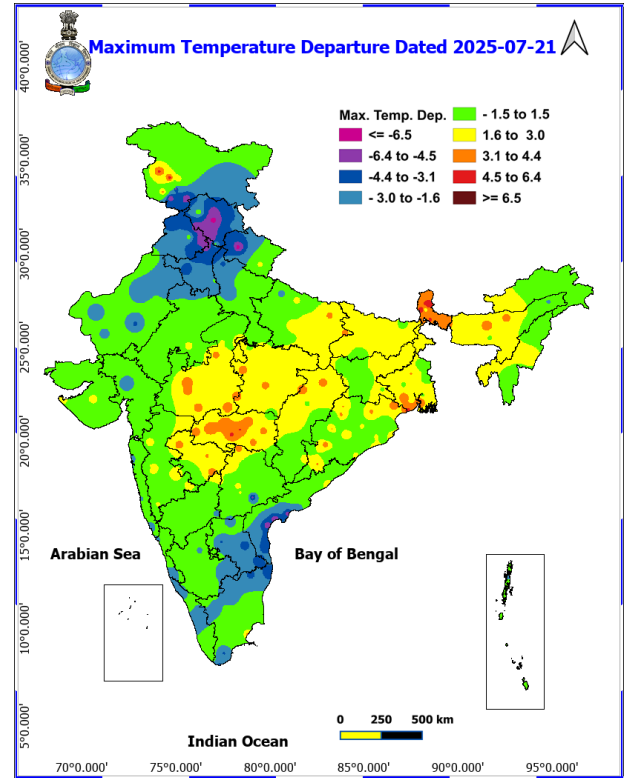


Fig. 3: Minimum Temperatures Dated 2025-07-22

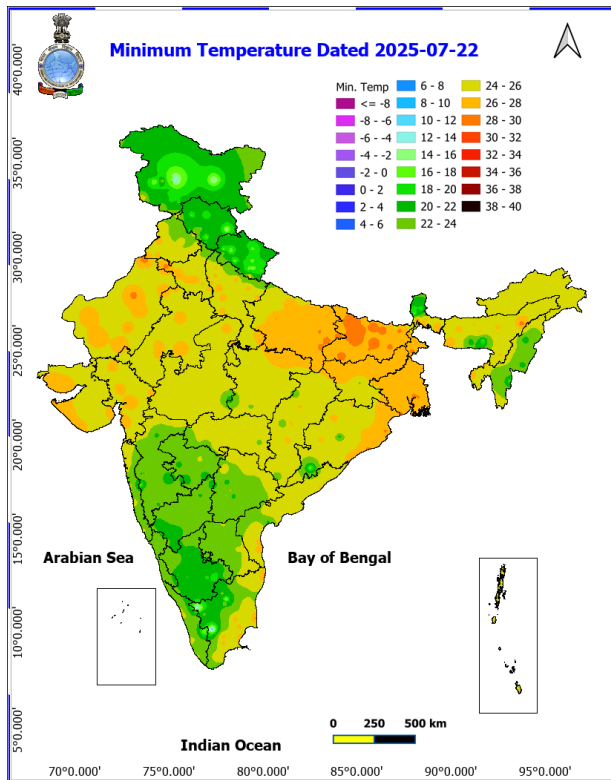
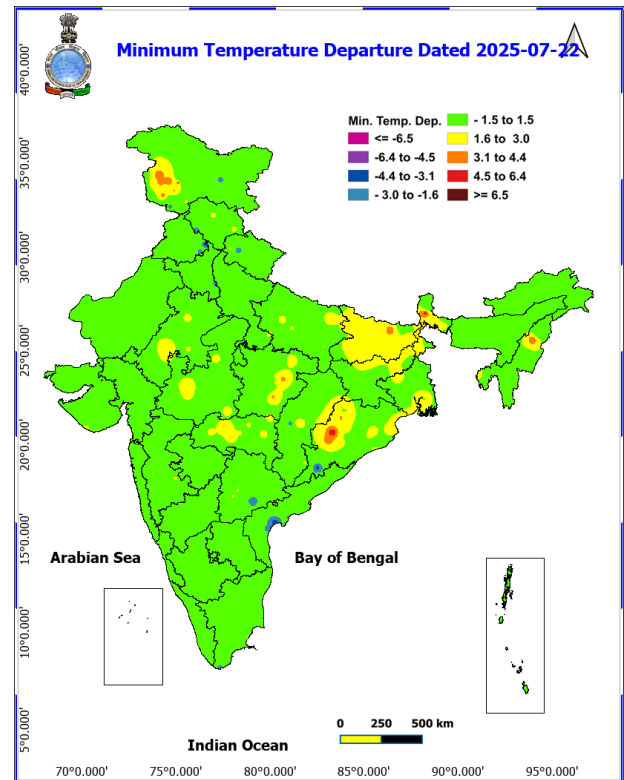
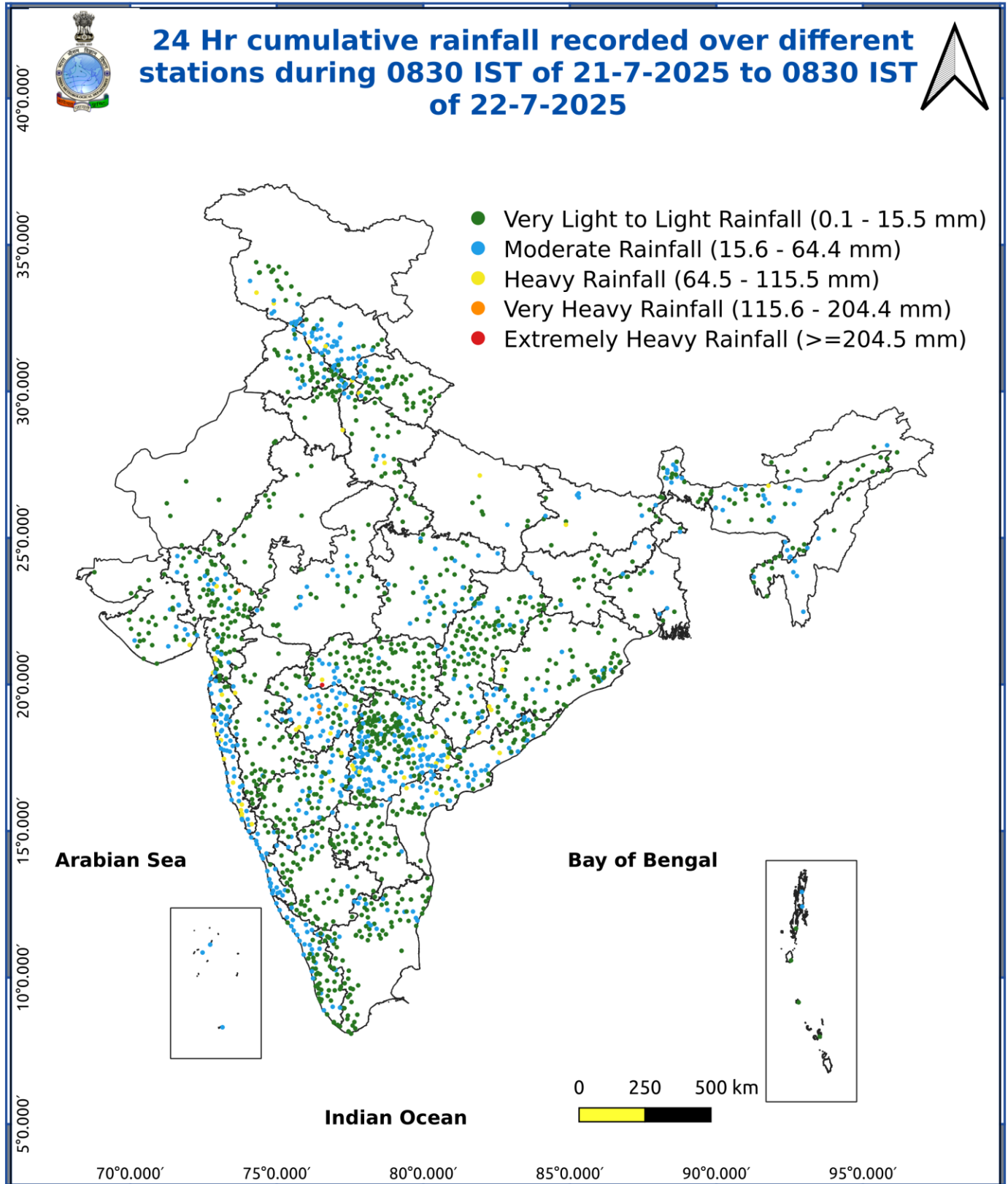


Fig. 4: Departure of Minimum Temp. Dated 2025-07-22







Impact & Action Suggested

- ✓ **Extremely heavy falls** very likely at isolated places over Telangana today.
- ✓ **Very heavy rainfall** over Telangana on 23rd, Kerala during 25th-27th; Konkan & Goa, Ghat areas of Madhya Maharashtra during 22nd-28th; West Madhya Pradesh during 26th-28th; East Madhya Pradesh during 25th-28th; Vidarbha, Chhattisgarh during 22nd-26th; Jharkhand, Gangetic West Bengal & Odisha on 24th & 25th and Jammu-Kashmir on 22nd & 23rd July.

Impact Expected

- Localized Flooding of roads, water logging in low lying areas and closure of underpasses mainly in urban areas of (**Rajasthan and West Madhya Pradesh**) the above region.
- Occasional reduction in visibility due to heavy rainfall.
- Disruption of traffic in major cities due to water logging in roads leading to increased travel time.
- Minor damage to kutcha roads.
- Possibilities of damage to vulnerable structure.
- Localized Landslides/Mudslides/landslips/mudslips/landsinks/mudsinks.
- Damage to horticulture and standing crops in some areas due to inundation.
- It may lead to riverine flooding in some river catchments (for riverine flooding please visit Web page of CWC)

Action Suggested

- Check for traffic congestion on your route before leaving for your destination.
- Follow any traffic advisories that are issued in this regard.
- Avoid going to areas that face the water logging problems often.
- Avoid staying in vulnerable structure.

Agromet advisories for likely impact of Heavy / Heavy to Very Heavy Rainfall

- In **Telangana**, ensure proper drainage facilities from the fields of paddy, maize, cotton, soybean and vegetables.
- In **Maharashtra**, provide adequate drainage facilities in fields of soybean, cotton, pigeon pea, sorghum, maize, green gram, black gram and turmeric in **Vidarbha**. Make arrangement to drain out excess water from paddy and finger millet nurseries, groundnut, vegetables and orchards in **Konkan** and rice and finger millet nurseries in **ghat areas of Madhya Maharashtra**.
- In **Jammu & Kashmir**, provide adequate drainage facilities in fields of maize, green gram, vegetables and transplanted rice in **Sub Tropical Zone** and maize fields and kharif pulses in **Intermediate Zone**.
- In **Uttarakhand**, maintain proper drainage channels in fields of rice in **Bhabar and Tarai Zone** and black gram in **Hill Zone**. Make necessary arrangements to drain out excess water from barnyard millet, finger millet, cucumber and rice fields in **Sub Humid SubTropic Zone**.
- In **Himachal Pradesh**, make proper drainage channels in the standing crops like maize, finger millet and vegetable fields. Provide staking to tall and leguminous crops and cucumber vines. In **Mid Hills Sub Humid Zone**, undertake harvesting of matured tomato, brinjal, capsicum and fruits and keep the harvested produce at safer places.
- In **Kerala**, provide mechanical support to protect banana plants. Ensure proper drainage facilities in banana, coconut and rice in **Central Zone**; banana, coconut, ginger and vegetable fields in **Southern Zone** and rice nursery in **High Altitude Zone**. In **Northern Zone**, postpone sowing / nursery preparation of rice.
- In **Karnataka**, postpone nursery sowing of rice and provide drainage in arecanut fields and banana orchards in **Coastal Zone**. In **Hill Zone**, make arrangements to drain out excess water from rice nurseries, fields of maize, cotton, ginger and plantations of arecanut. In **Southern Transition Zone**, provide proper drainage in arecanut and coconut fields. In **Southern Dry Zone**, provide staking / support to maize, tomato and banana crop. Ensure proper drainage to prevent waterlogging especially in rice, vegetables and spice crops.
- In **Coastal Andhra Pradesh**, ensure proper drainage channels in fields of maize and direct seeded rice in **Krishna Godavari Zone**.
- In **Chhattisgarh**, make arrangements for drainage of excess water from fields of rice, maize, pigeon pea, minor millets and vegetables. Provide mechanical support to tall/weak crops with stakes or bamboo to prevent lodging or breakage.
- In **Odisha**, drain out excess water from rice nurseries and fields of transplanted rice, maize, pulses, vegetable and plantation crops.
- In **Arunachal Pradesh**, maintain drainage in finger millet, orchards, vegetables and transplanted rice. Cover the nursery bed of millet with plastic sheet or shed, and cover the surface of already sown seed with light layer of natural mulches like leaves.
- In **Meghalaya**, maintain proper drainage channels around the nursery beds of rice. Ensure adequate drainage in maize, cow pea, okra, brinjal and pumpkin crop fields to prevent waterlogging. Provide support to banana plant to prevent lodging.

***Red color warning does not mean "Red Alert" Red color warning means "Take Action"**

Forecast and warning for any day is valid from 0830 hours IST of day till 0830 hours IST of next day

For more details kindly visit <https://mausam.imd.gov.in> or contact 011-2434-4599

(Service to the nation since 1875)

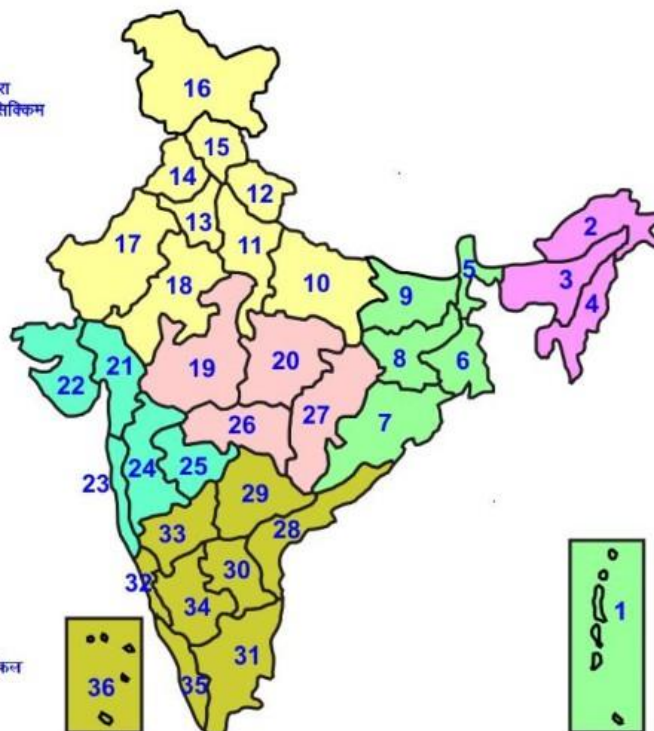


Livestock / Fishery

- Keep the animals inside the shed during heavy rainfall and provide them balanced feed.
- Store feed and fodder in a safe place to prevent spoilage.
- Construct an outlet with proper netting around the ponds to drain out excess water, thereby preventing fish from escaping in case of overflow.

LEGENDS

- 1 अंडमान और निकोबार द्वीप समुह
- 2 अरुणाचल प्रदेश
- 3 असम और मेघालय
- 4 नागालैंड मनीपुर मीजोरम और त्रिपुरा
- 5 उप हिमालय पश्चिम बंगाल एवं सिक्किम
- 6 पश्चिम बंगाल
- 7 ओडिसा
- 8 झारखंड
- 9 बिहार
- 10 पूर्वी उत्तर प्रदेश
- 11 पश्चिम उत्तर प्रदेश
- 12 उत्तराखंड
- 13 हरियाणा चंडीगढ़ एवं दिल्ली
- 14 पंजाब
- 15 हिमाचल प्रदेश
- 16 जम्मू एवं कश्मीर एवं लद्दाख
- 17 पश्चिम राजस्थान
- 18 पूर्वी राजस्थान
- 19 पश्चिम मध्य प्रदेश
- 20 पूर्वी मध्य प्रदेश
- 21 गुजरात क्षेत्र
- 22 सौराष्ट्र एवं कच्छ
- 23 कोकण एवं गोवा
- 24 मध्य महाराष्ट्र
- 25 मराठावाड़ा
- 26 विदर्भ
- 27 छत्तीसगढ़
- 28 तटीय आंध्र प्रदेश एवं यनम
- 29 तेलंगाना
- 30 रायलसीमा
- 31 तमिलनाडु, पुदुचेरी एवं कराईकल
- 32 तटिय कर्नाटक
- 33 आंतरिक उत्तरी कर्नाटक
- 34 आंतरिक दक्षिणी कर्नाटक
- 35 केरल एवं माहे
- 36 लक्षद्वीप



1. Andaman & Nicobar Islands
2. Arunachal Pradesh
3. Assam & Meghalaya
4. Nagaland, Manipur, Mizoram & Tripura
5. Sub-Himalayan West Bengal & Sikkim
6. Gangetic West Bengal
7. Orissa
8. Jharkhand
9. Bihar
10. East Uttar Pradesh
11. West Uttar Pradesh
12. Uttarakhand
13. Haryana, Chd & Delhi
14. Punjab
15. Himachal Pradesh
16. Jammu & Kashmir and Ladakh
17. West Rajasthan
18. East Rajasthan
19. West Madhya Pradesh
20. East Madhya Pradesh
21. Gujarat
22. Saurashtra
23. Konkan & Goa
24. Madhya Maharashtra
25. Marathawada
26. Vidharbha
27. Chhattisgarh
28. Coastal Andhra Pradesh & Yanam
29. Telangana
30. Rayalaseema
31. Tamilnadu, Puducherry & Karaikal
32. Coastal Karnataka
33. North Interior Karnataka
34. South Interior Karnataka
35. Kerala & Mahe
36. Lakshadweep

SPATIAL DISTRIBUTION (% of Stations reporting)


% Stations	Category	% Stations	Category
76-100	Widespread (WS/Most Places)	26-50	Scattered (SCT/ A Few Places)
51-75	Fairly Widespread (FWS/ Many Places)	1-25	Isolated (ISOL)

Subdivision Colour

- NO WARNING
- WATCH (BE UPDATED)
- ALERT (BE PREPARED TO TAKE ACTION)
- WARNING (TAKE ACTION)

Probabilistic Forecast

Terms	Probability of Occurrence (%)
Unlikely	< 25
Likely	25 - 50
Very Likely	50 - 75
Most Likely	> 75

- | | | | |
|--|---|--|--|
|  Heavy Rain |  Very Heavy Rain |  Extremely Heavy Rain |  Heavy Snow |
|  Thunderstorm & Lightning |  Hailstorm |  Dust Storm |  Dust Raising Winds |
|  Strong surface winds |  Heat Wave |  Hot Day |  Warm Night |
|  Cold Wave |  Cold Day |  Ground Frost |  Fog |
|  Hot & Humid | | | |

*Red color warning does not mean "Red Alert" Red color warning means "Take Action"

Forecast and warning for any day is valid from 0830 hours IST of day till 0830 hours IST of next day

For more details kindly visit <https://mausam.imd.gov.in> or contact 011-2434-4599

(Service to the nation since 1875)

LEGENDS

WARNING

WARNING (TAKE ACTION)
ALERT (BE PREPARED)
WATCH (BE UPDATED)
NO WARNING (NO ACTION)

Probabilistic Forecast

Terms	Probability of Occurrence (%)
Unlikely	< 25
Likely	25 - 50
Very Likely	50 - 75
Most Likely	> 75



Heavy: 64.5 to 115.5 mm/cm *
Very Heavy: 115.6 to 204.4 mm/cm *
Extremely Heavy: > 204.4 mm/cm *



When maximum temperature of a station reaches $\geq 40^{\circ}\text{C}$ for plains and $\geq 30^{\circ}\text{C}$ for hilly regions
(a) Based on Departure from normal

Heat Wave: Maximum Temperature Departure from normal 4.5°C to 6.4°C .
Severe Heat Wave: Maximum Temperature Departure from normal $\geq 6.5^{\circ}\text{C}$

(b). Based on Actual maximum temperature

Heat Wave: When actual maximum temperature $\geq 45^{\circ}\text{C}$.
Severe Heat Wave: When actual maximum temperature $\geq 47^{\circ}\text{C}$

(c). Criteria for heat wave for coastal stations

When maximum temperature departure is $> 4.5^{\circ}\text{C}$ from normal. Heat Wave may be described provided maximum temperature $\geq 37^{\circ}\text{C}$



When maximum temperature remains 40°C

Warm Night: When minimum temperature departure 4.5°C to 6.4°C .
Severe Warm Night: When minimum temperature departure $> 6.4^{\circ}\text{C}$.



When minimum temperature of a station $\leq 10^{\circ}\text{C}$ for plains and $\leq 0^{\circ}\text{C}$ for hilly regions.

(a). Based on departure

Cold Wave: Minimum Temperature Departure from normal -4.5°C to -6.4°C .
Severe Cold Wave: Minimum Temperature Departure from normal $\leq -6.5^{\circ}\text{C}$

(b) Based on actual Minimum Temperature (for Plains only)

Cold Wave: When Minimum Temperature is $\leq 4.0^{\circ}\text{C}$
Severe Cold Wave: When Minimum Temperature is $\leq 2.0^{\circ}\text{C}$

(c) For Coastal Stations

When Minimum Temperature departure is $\leq -4.5^{\circ}\text{C}$ & actual Minimum Temperature is $\leq 15^{\circ}\text{C}$



When minimum temperature of a station $\leq 10^{\circ}\text{C}$ for plains and $\leq 0^{\circ}\text{C}$ for hilly regions
Based on departure

Cold Day: Maximum Temperature Departure from normal -4.5°C to -6.4°C .
Severe Cold Day: Maximum Temperature Departure from normal $\leq -6.5^{\circ}\text{C}$



Phenomenon of small droplets suspended in air and the horizontal visibility $< 1\text{km}$

Moderate Fog: When the visibility between 500-200 metres
Dense Fog: when the visibility between 50-200 metres
Very Dense Fog: when the visibility < 50 metres



Sudden electrical discharges manifested by a flash of light (Lightning) and a sharp rumbling sound (thunder)



An ensemble of particles of dust or sand energetically lifted to great heights by a strong and turbulent wind.



Ice deposits on ground

Air temperature $\leq 4^{\circ}\text{C}$ (over Plains)



A strong wind that rises suddenly, lasts for at least 1 minute.

Moderate: Wind speed 52-61 kmph
Severe: Wind speed 62-87 kmph
Very Severe: Wind speed > 87 kmph



Effect of various waves in the sea over specific area

Rough to very rough: Wind speed 41-62 kmph (22-33 knots) & Wave height 2.5-6 metre
High to very high: Wind speed 63-117 kmph (34-63 knots) & Wave height 6-14 metre
Phenomenal: Wind speed > 117 kmph (> 63 knots) & Wave height > 14 metre



Cyclonic Storm: Wind speed 62-87 kmph (34-47 knots)

Severe Cyclonic Storm: Wind speed 88-117 kmph (48-63 knots)
Very Severe Cyclonic Storm: Wind speed 118-165 kmph (64-89 knots)
Extremely Severe Cyclonic Storm: Wind speed 166-220 kmph (90-119 knots)
Super Cyclone Storm: Wind speed > 220 kmph (> 119 knots)

*Red color warning does not mean "Red Alert" Red color warning means "Take Action"

Forecast and warning for any day is valid from 0830 hours IST of day till 0830 hours IST of next day

For more details kindly visit <https://mausam.imd.gov.in> or contact 011-2434-4599

(Service to the nation since 1875)