

Saturday, September 28, 2024
Time of Issue: 1345 hours IST
(MID-DAY)

ALL INDIA WEATHER SUMMARY AND FORECAST BULLETIN

Significant Weather Features:

Weather Systems:

- ✓ Yesterday's upper air cyclonic circulation over southwest Madhya Pradesh & neighbourhood now lies over southwest Uttar Pradesh & neighbourhood extending upto middle tropospheric levels.
- ✓ A trough runs from Northeast Arabian Sea and adjoining south Gujarat to north Bihar across the cyclonic circulation over southwest Uttar Pradesh extending upto middle tropospheric levels.

Forecast & Warnings (upto 7 days)

West India

- ✓ Fairly widespread to widespread light to moderate rainfall very likely over Konkan & Goa, Madhya Maharashtra, Gujarat State during next 2 days; Isolated to Scattered light to moderate rainfall over the entire region during subsequent 5 days; dry weather likely to prevail over Saurashtra & Kutch from 2nd October.
- ✓ **Heavy to very Heavy rainfall** at isolated places very likely over Gujarat State on 28th September.
- ✓ **Isolated heavy rainfall** very likely over Madhya Maharashtra, North Konkan & Goa on 28th September.

East & Northeast India

- ✓ Scattered to Fairly widespread light to moderate rainfall very likely over Northeast India during next 2 days and fairly widespread to widespread light/moderate rainfall over the region during subsequent next 5 days; Fairly widespread to widespread light/moderate rainfall very likely over East India today & Isolated to Scattered light to moderate rainfall during the next subsequent 6 days.
- ✓ **Heavy to Very Heavy rainfall** very likely over Sub-Himalayan West Bengal & Sikkim, Bihar, on 28th September, Arunachal Pradesh, Nagaland, Manipur, Mizoram & Tripura during 2nd to 4th October, Assam & Meghalaya on 2nd & 3rd.
- ✓ **Isolated heavy rainfall** very likely Arunachal Pradesh on 28th September and 1st October and Assam & Meghalaya and Nagaland, Manipur, Mizoram & Tripura on 30th September and 1st October.
- ✓

Central India:

- ✓ Scattered to Fairly widespread light to moderate rainfall over central India today and Isolated to Scattered light to moderate rainfall over the same region during subsequent 6 days.
- ✓ **Isolated heavy rainfall** very likely over East Madhya Pradesh on 28th September.

Northwest India

- ✓ Fairly widespread to widespread light to moderate rainfall very likely over East Uttar Pradesh today days & Isolated to Scattered light to moderate rainfall over the same region during subsequent next 6 days; Isolated to Scattered light to moderate rainfall over Uttarakhand during the week & Isolated to Scattered light to moderate rainfall over Himachal Pradesh, Punjab, Haryana-Chandigarh-Delhi, Rajasthan, West Uttar Pradesh during next 2 days and dry weather likely to prevail over the same region during subsequent next 4-5 days.
- ✓ **Isolated heavy to very heavy rainfall** very likely over East Uttar Pradesh during 28th September.
- ✓ **Isolated heavy rainfall** very likely over Uttarakhand & East Rajasthan on 28th September.

South Peninsular India

- ✓ Fairly widespread to widespread light to moderate rainfall very likely over Kerala & Mahe, Lakshadweep during the week; Scattered to Fairly widespread light to moderate rainfall over the rest of the region during the week.
- ✓ **Isolated heavy rainfall** very likely over Tamil Nadu during 28th to 30th, South Interior Karnataka on 28th and 29th, Rayalaseema on 28th September & 2nd October, Coastal Karnataka on 29th, Lakshadweep on 30th and over Kerala & Mahe during 28th September to 2nd October.

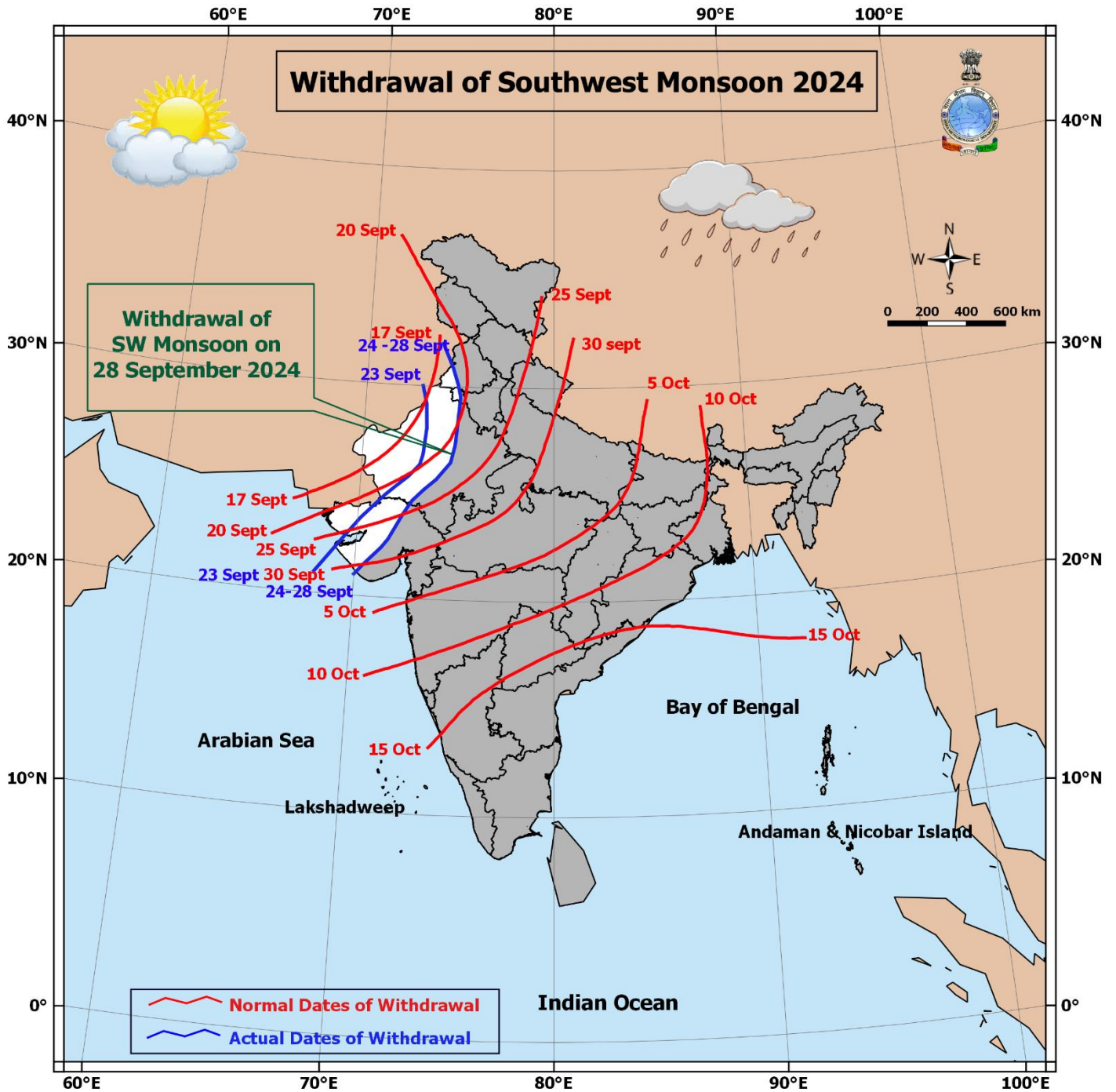
Main Weather Observations:

- ❖ **Rainfall distribution** (from 0830 hours IST of yesterday to 0830 hours IST of Today): **at most places** over Sub-Himalayan West Bengal & Sikkim, Konkan & Goa, Gujarat state, Coastal Karnataka, Jammu-Kashmir-Ladakh-Gilgit-Baltistan-Muzaffarabad, East Uttar Pradesh, West Madhya Pradesh, Vidarbha, Gangetic West Bengal, Bihar; **at many places** over Arunachal Pradesh, Assam & Meghalaya, Madhya Maharashtra, Uttarakhand, East Madhya Pradesh, Jharkhand; **at a few places** over Nagaland, Manipur, Mizoram & Tripura, Kerala & Mahe, Lakshadweep, Coastal Andhra Pradesh & Yanam, Himachal Pradesh, Punjab, West Uttar Pradesh, East Rajasthan, Andaman & Nicobar Islands, Odisha; **at isolated places** over Marathwada, Tamil Nadu, Puducherry & Karaikal, Rayalaseema, Telangana, Interior Karnataka, Haryana-Chandigarh-Delhi, West Rajasthan, Vidarbha.
- ❖ **Heavy rainfall** recorded (from 0830 hours IST of yesterday to 0830 hours IST of Today): **Heavy to very Heavy rainfall at a few places with extremely heavy rainfall** at isolated places over East Uttar Pradesh, Sub-Himalayan West Bengal & Sikkim and Bihar; **Heavy to very Heavy rainfall** at few places over Sub-Himalayan West Bengal & Sikkim and over isolated places over Gujarat Region, Konkan & Goa, Saurashtra & Kutch, West Madhya Pradesh, Marathwada and Madhya Maharashtra; **Heavy rainfall** at isolated places over Himachal Pradesh, East Rajasthan, Chhattisgarh, Assam & Meghalaya, Tamil Nadu, Puducherry & Karaikal and Rayalaseema.
- ❖ **Significant amount of rainfall** (from 0830 hours IST of yesterday to 0830 hours IST of Today) (in cm): **Refer annexure II.**
- ❖ **Minimum Temperature Departures (as on 28-09-2024):** Minimum temperatures **above normal (1.6°C to 3.0°C)** at most places over Jammu-Kashmir-Ladakh-Gilgit-Baltistan-Muzaffarabad, Himachal Pradesh, Punjab & West Rajasthan; at a few places over Uttarakhand; at isolated places over East Rajasthan, West Madhya Pradesh, West Uttar Pradesh, Haryana-Chandigarh-Delhi, Madhya Maharashtra, Marathwada, Vidarbha, Tamil Nadu, Puducherry & Karaikal & Assam & Meghalaya. Today, the lowest minimum temperature of 19.4°C is reported at Deesa (Gujarat Region) over the plains of the country. (Fig.4)
- ❖ **Maximum Temperature Departures (as on 27-09-2024):** Maximum temperatures were **appreciably above normal (3.1°C to 5.0°C)** at isolated places over Nagaland, Manipur, Mizoram & Tripura; **above normal (1.6°C to 3.0°C)** at isolated places over West Rajasthan, Assam & Meghalaya, Kerala & Mahe, Tamil Nadu, Puducherry & Karaikal. These were **markedly below normal (-5.1°C or less)** at most places over Sub-Himalayan West Bengal & Sikkim; at a few places over East Uttar Pradesh; isolated places over West Madhya Pradesh, Gujarat Region, Coastal Andhra Pradesh & Yanam, Bihar; **below normal (-1.6°C to -3.0°C)** at most places over Odisha, Saurashtra & Kutch, East Rajasthan, East Madhya Pradesh, Madhya Maharashtra; at a few places over Jammu-Kashmir-Ladakh-Gilgit-Baltistan-Muzaffarabad, Jharkhand, Vidarbha, Marathwada Uttarakhand; at isolated places over Punjab, Arunachal Pradesh, Gangetic West Bengal, Telangana, Chhattisgarh, Himachal Pradesh and **near normal** over rest parts of the country. Yesterday, **the highest Maximum Temperature of 41.7°C** was reported at **Pokharan (West Rajasthan)** over the country. (Fig. 2)

Meteorological Analysis (Based on 0830 hours IST)

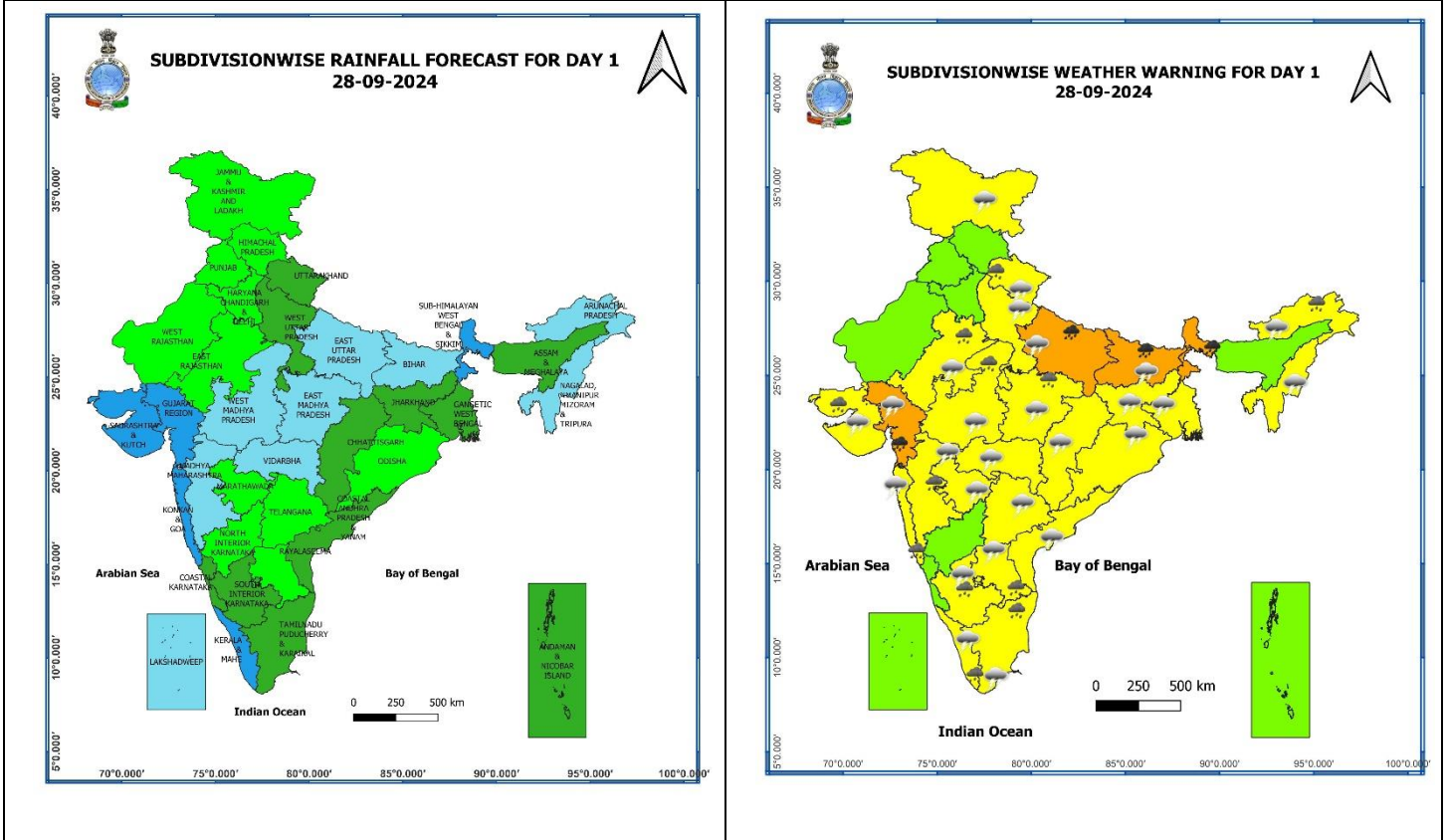
- ❖ The **line of withdrawal of southwest monsoon** continues to pass through Firozpur, Sirsa, Churu, Ajmer, Mount Abu, Deesa, Surendranagar, Junagarh and 21°N/70°E.
- ❖ The **cyclonic circulation** over southwest Uttar Pradesh & neighbourhood persists and extends upto 5.8 km above mean sea level tilting southwestwards with height.
- ❖ The **trough** now runs from northeast Arabian Sea to northwest Bihar across, the cyclonic circulation over southwest Uttar Pradesh & neighbourhood and extends upto 5.8 km above mean sea level.
- ❖ The **Western Disturbance** as a trough in middle tropospheric westerlies with its axis at 5.8 km above mean sea level roughly along Long. 70°E to the north of Lat. 30°N persists.
- ❖ A **trough** runs from South Interior Karnataka to Gulf of Mannar across Interior Tamil Nadu at 0.9 km above mean sea level.
- ❖ The **cyclonic circulation** over northeast Assam and neighbourhood extending upto 5.8 km above mean sea level has become less marked.

Withdrawal of Southwest Monsoon 2024



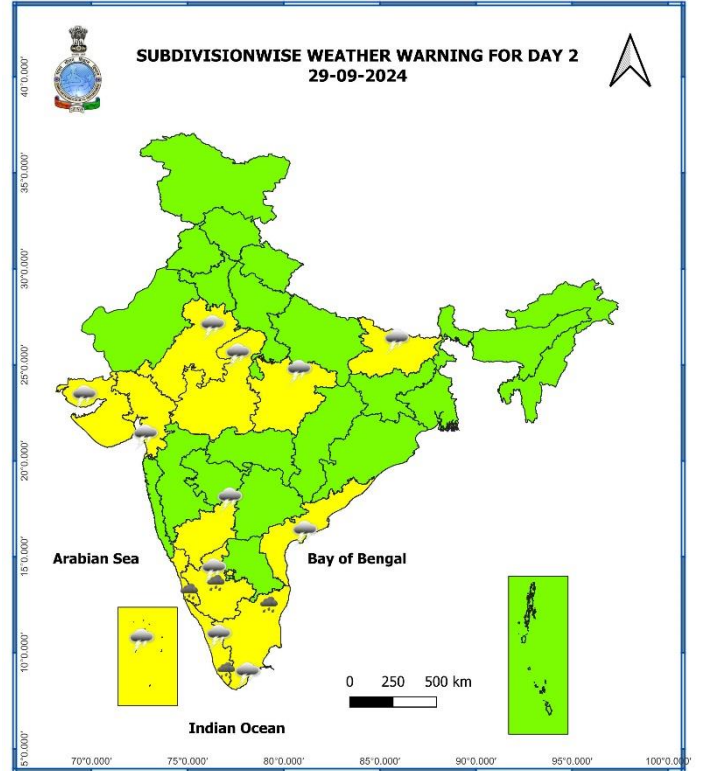
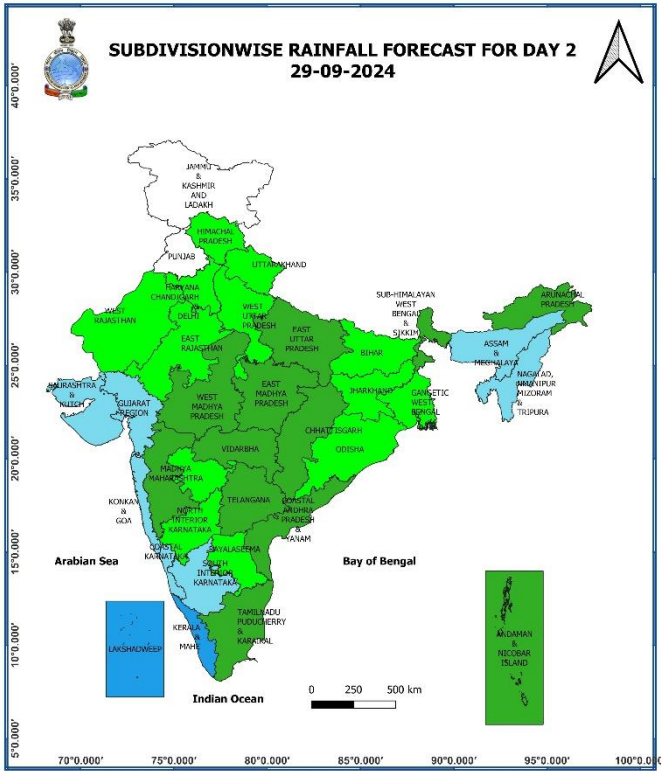
* Red colour warning does not mean "Red Alert", Red colour warning means "Take Action".
Forecast and Warning for any day is valid from 0830 hours IST of day till 0830 hours IST of next day.
For more details, kindly visit <https://mausam.imd.gov.in> or contact: 011-2434-4599
(Service to the Nation since 1875)

Weather Forecast & Warnings for next 7 days (Upto 0830 hours IST of 05th October, 2024)



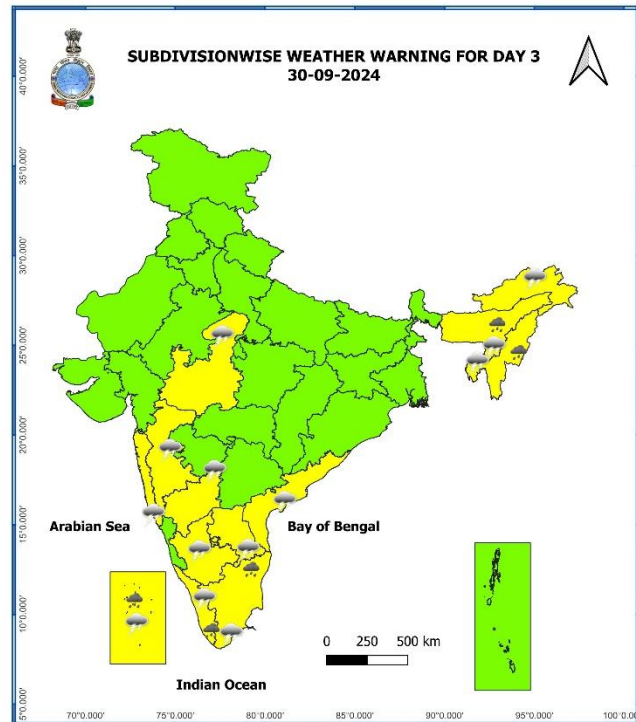
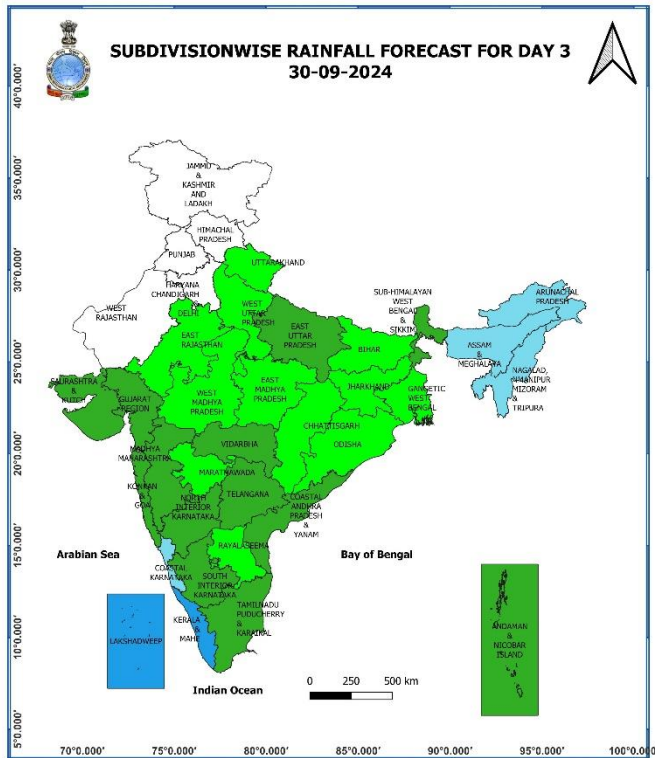
28 September (Day 1):

- ❖ **Heavy to very Heavy rainfall (≥ 12 cm)** very likely at isolated places over East Uttar Pradesh, Sub-Himalayan West Bengal & Sikkim, Bihar, Gujarat state; **Heavy rainfall (≥ 7 cm)** very likely at isolated places over Uttarakhand, East Rajasthan, Madhya Pradesh, Arunachal Pradesh, Konkan & Goa, Madhya Maharashtra, Rayalaseema, Coastal & South Interior Karnataka, Kerala & Mahe and Tamil Nadu, Puducherry & Karaikal.
- ❖ **Thunderstorm accompanied gusty winds (speed reaching 30-40 kmph)** very likely at isolated places over Kerala & Mahe; **with lightning** very likely at isolated places over Jammu-Kashmir-Ladakh-Gilgit-Baltistan-Muzaffarabad, Uttarakhand, Uttar Pradesh, East Rajasthan, Madhya Pradesh, Vidarbha, Chhattisgarh, Gangetic West Bengal, Bihar, Jharkhand, Odisha, Arunachal Pradesh, Nagaland, Manipur, Mizoram & Tripura, Konkan & Goa, Madhya Maharashtra, Marathwada, Gujarat state, Tamil Nadu, Puducherry & Karaikal, Coastal Andhra Pradesh & Yanam, Telangana, Rayalaseema and South Interior Karnataka.
- ❖ **Squally weather with wind speed reaching 35 kmph to 45 kmph gusting to 55 kmph** very likely to prevail over south Gujarat, off Maharashtra coast and gulf of Mannar. **Squally winds with speed reaching 45 kmph to 55 kmph gusting to 65 kmph** likely to prevail over western parts of southwest Arabian sea adjoining few parts of westcentral Arabian sea along and off Somalia coast. Fishermen are advised not to venture into these areas.



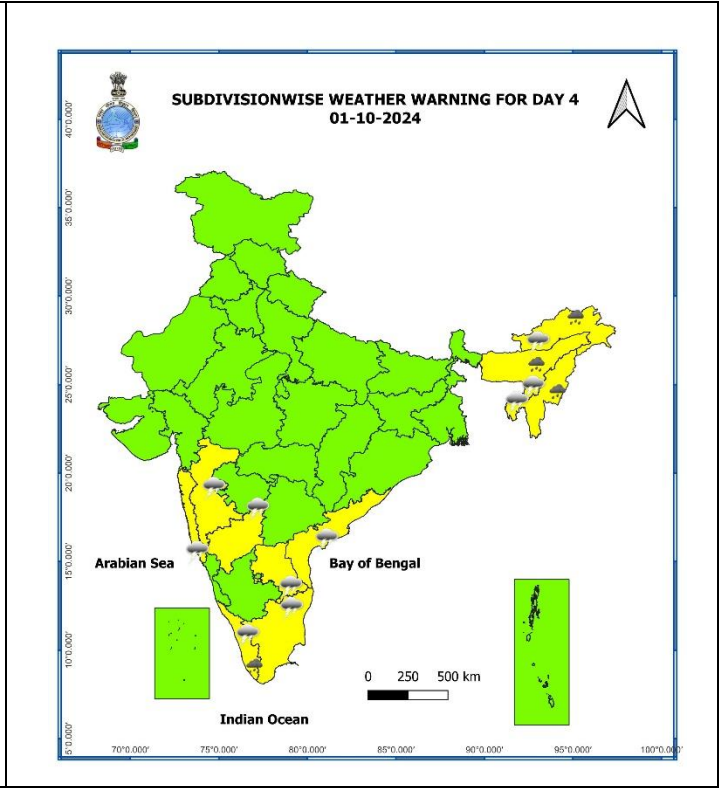
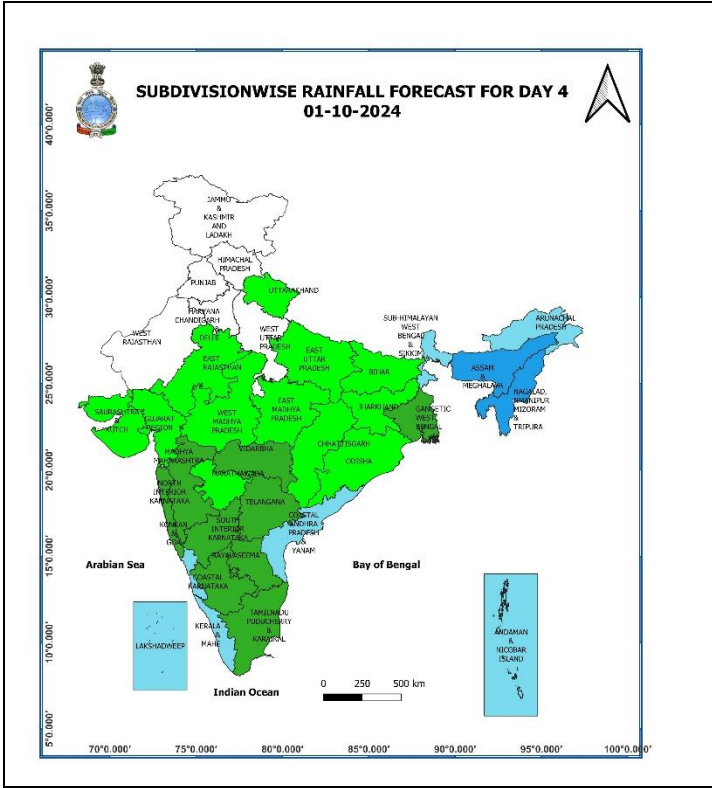
29 September (Day 2):

- ❖ **Heavy rainfall (≥ 7 cm)** very likely at isolated places over Tamil Nadu, Puducherry & Karaiikal, Kerala & Mahe.
- ❖ **Thunderstorm accompanied gusty winds (speed reaching 30-40 kmph)** very likely at isolated places over Kerala & Mahe; **with lightning** very likely at isolated places over East Rajasthan, Madhya Pradesh, Bihar, Gujarat state, Tamil Nadu, Puducherry & Karaiikal, Lakshadweep, Coastal Andhra Pradesh & Yanam, Interior Karnataka.
- ❖ **Squally weather with wind speed reaching 35 kmph to 45 kmph gusting to 55 kmph** very likely to prevail over gulf of Mannar, Kerala coast and Lakshadweep area. **Squally winds with speed reaching 45 kmph to 55 kmph gusting to 65 kmph** likely to prevail over western parts of southwest Arabian sea adjoining few parts of westcentral Arabian sea along and off Somalia coast. Fishermen are advised not to venture into these areas.



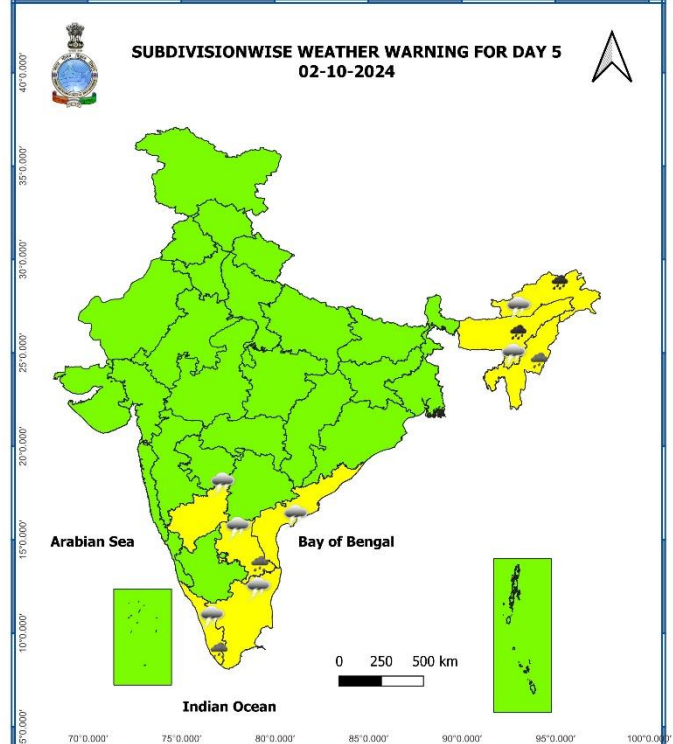
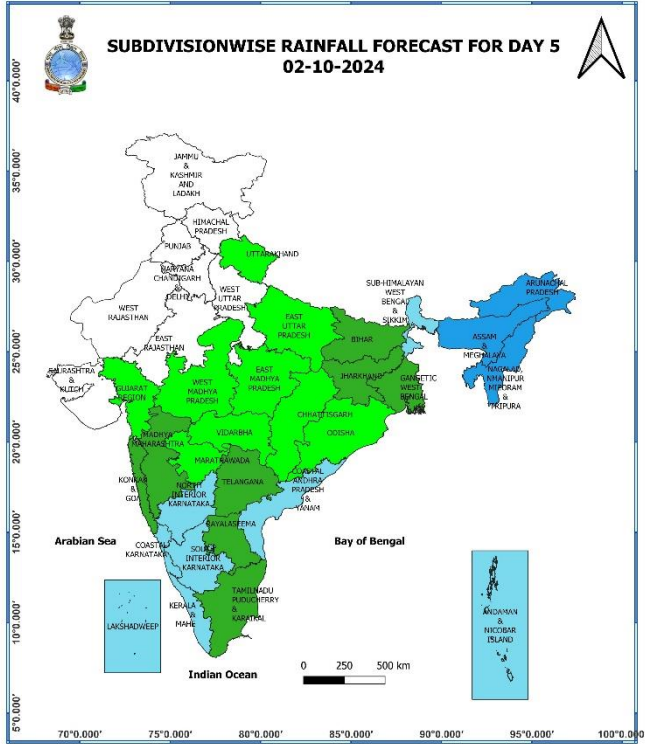
30 September (Day 3):

- ❖ **Heavy rainfall (≥ 7 cm)** very likely at isolated places over Assam & Meghalaya, Nagaland, Manipur, Mizoram & Tripura, Tamil Nadu, Puducherry & Karaikal, Kerala & Mahe, Lakshadweep.
- ❖ **Thunderstorm accompanied gusty winds (speed reaching 30-40 kmph)** very likely at isolated places over Kerala & Mahe; **with lightning** very likely at isolated places over West Madhya Pradesh, Arunachal Pradesh, Assam & Meghalaya, Nagaland, Manipur, Mizoram & Tripura, Konkan & Goa, Madhya Maharashtra, Tamil Nadu, Puducherry & Karaikal, Lakshadweep, Coastal Andhra Pradesh & Yanam, Rayalaseema, Interior Karnataka.
- ❖ **Squally weather with wind speed reaching 35 kmph to 45 kmph gusting to 55 kmph** very likely to prevail over gulf of Mannar, Kerala coast and Lakshadweep area. **Squally winds with speed reaching 45 kmph to 55 kmph** gusting to 65 kmph likely to prevail over western parts of southwest Arabian sea adjoining few parts of westcentral Arabian sea along and off Somalia coast. Fishermen are advised not to venture into these areas.



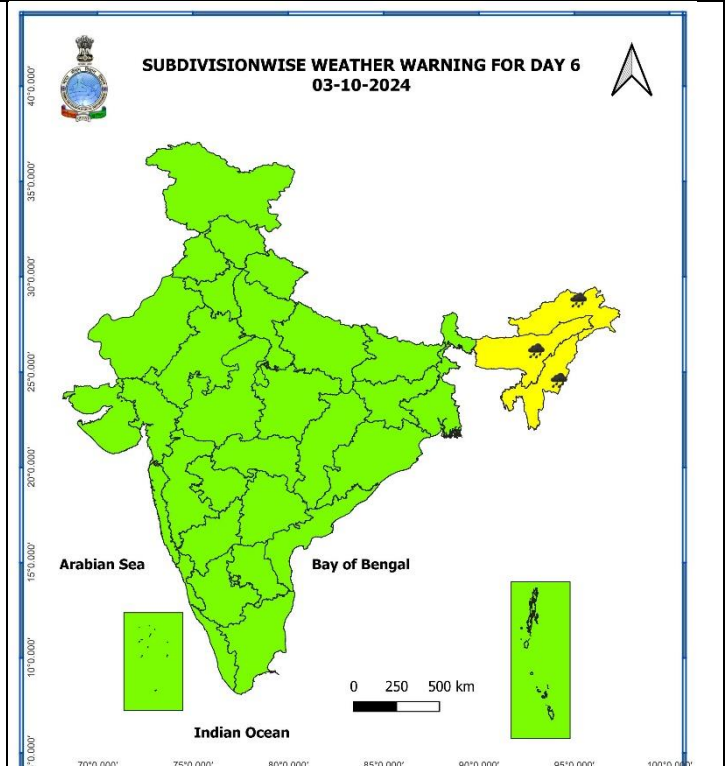
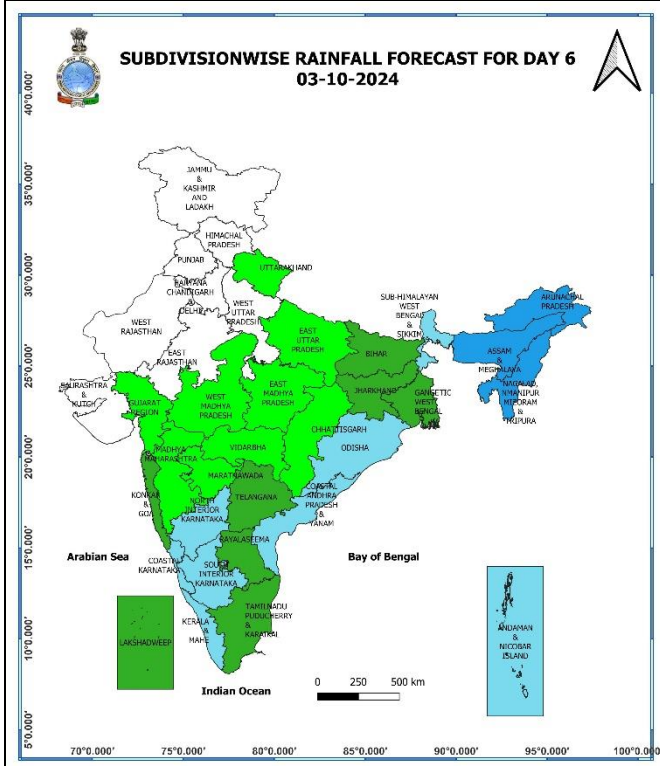
01 October (Day 4):

- ❖ **Heavy rainfall (≥ 7 cm)** likely at isolated places over Arunachal Pradesh, Assam & Meghalaya, Nagaland, Manipur, Mizoram & Tripura, Tamil Nadu, Puducherry & Karaikal, Kerala & Mahe.
- ❖ **Thunderstorm accompanied gusty winds (speed reaching 30-40 kmph)** likely at isolated places over Kerala & Mahe; **with lightning** likely at isolated places over Arunachal Pradesh, Assam & Meghalaya, Nagaland, Manipur, Mizoram & Tripura, Konkan & Goa, Madhya Maharashtra, Tamil Nadu, Puducherry & Karaikal, Coastal Andhra Pradesh & Yanam, Rayalaseema, North Interior Karnataka.
- ❖ **Squally winds with speed reaching 45 kmph to 55 kmph gusting to 65 kmph** likely to prevail over western parts of southwest Arabian sea adjoining few parts of westcentral Arabian sea along and off Somalia coast. Fishermen are advised not to venture into these areas.



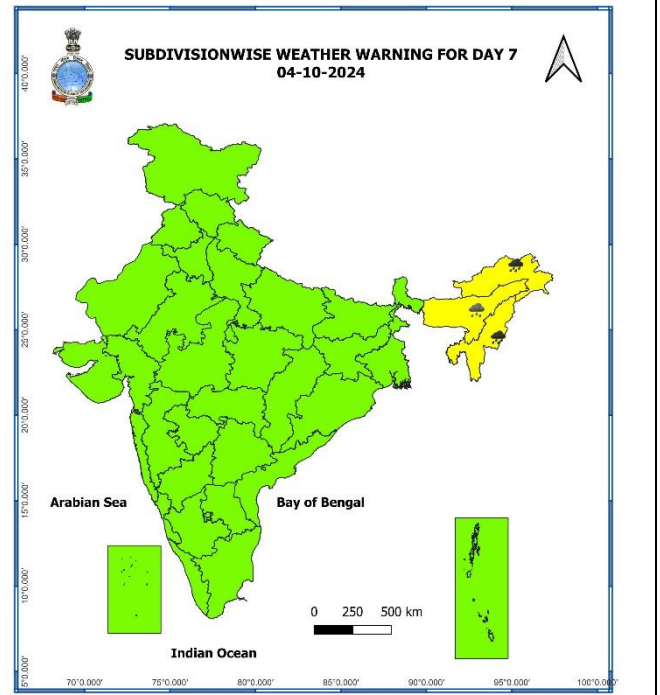
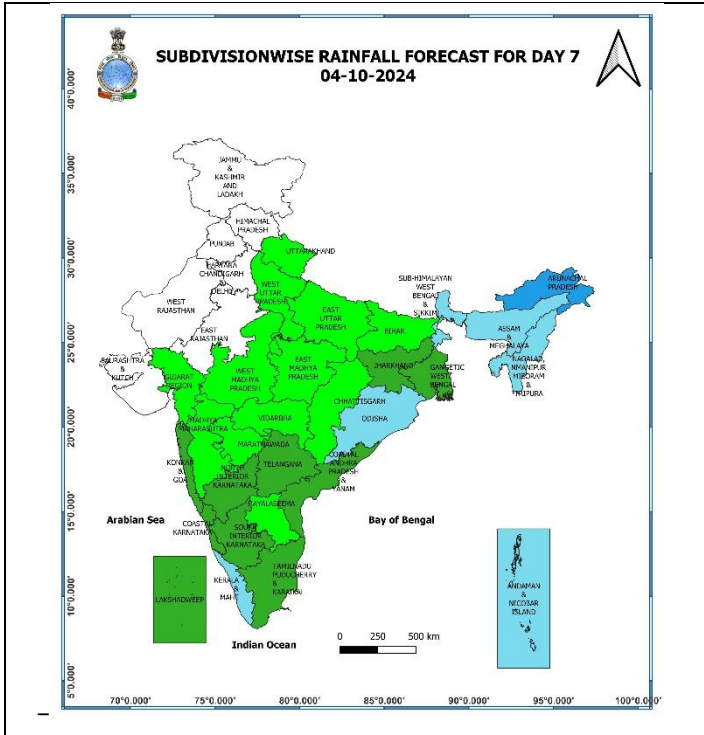
02 October (Day 5):

- ❖ **Heavy to very Heavy rainfall (≥ 12 cm)** likely at isolated places over Arunachal Pradesh, Assam & Meghalaya, Nagaland, Manipur, Mizoram & Tripura; **Heavy rainfall (≥ 7 cm)** likely at isolated places over Kerala & Mahe, Rayalaseema.
- ❖ **Thunderstorm accompanied gusty winds (speed reaching 30-40 kmph)** likely at isolated places over Kerala & Mahe; **with lightning** likely at isolated places over Arunachal Pradesh, Assam & Meghalaya, Nagaland, Manipur, Mizoram & Tripura, Tamil Nadu, Puducherry & Karaikal, Coastal Andhra Pradesh & Yanam, Rayalaseema, North Interior Karnataka.



03 October (Day 6):

Heavy to very Heavy rainfall (≥ 12 cm) likely at isolated places over Arunachal Pradesh, Assam & Meghalaya, Nagaland, Manipur, Mizoram & Tripura;



04 October (Day 7):

- ❖ Heavy to very Heavy rainfall (≥ 12 cm) likely at isolated places over Arunachal Pradesh, Nagaland, Manipur, Mizoram & Tripura; Heavy rainfall (≥ 7 cm) likely at isolated places over Assam & Meghalaya.

Weather Outlook for subsequent 3 days (During 05th October- 07th October, 2024)

- ❖ Dry weather likely to prevail over West Rajasthan, north Gujarat, Punjab, Haryana-Chandigarh-Delhi, and Isolated rainfall activity likely over Himachal Pradesh, Uttarakhand, East Rajasthan and Uttar Pradesh.
- ❖ Isolated to Scattered rainfall likely over Central, Eastern, North Eastern and Peninsular India.

- Action may be taken based on **ORANGE AND RED** COLOUR warnings.
- Vulnerable regions likely urban and hilly areas action may be initiated for heavy rainfall warning.
- As the lead period increases forecast accuracy decreases.

Impact due to

- ✓ **Isolated heavy to very heavy rainfall** very likely over East Uttar Pradesh, Bihar on 28th September.
- ✓ **Moderate flash flood risk** likely over few watersheds & neighbourhoods of East Uttar Pradesh, Bihar, Sub-Himalayan West Bengal & Sikkim, West Madhya Pradesh, south Gujarat Region on 28th & 29th September.

Impact Expected

- ✓ Localized Flooding of roads, water logging in low lying areas and closure of underpasses mainly in urban areas of the above region.
- ✓ Occasional reduction in visibility due to heavy rainfall.
- ✓ Disruption of traffic in major cities and roadways due to water logging in roads leading to increased travel time.
- ✓ Minor damage to kutcha roads.
- ✓ Possibilities of damage to vulnerable structure.
- ✓ Localized Landslides/Mudslides/landslips/mud slips/land sinks/mud sinks.
- ✓ Damage to horticulture and standing crops in some areas due to inundation and wind.
- ✓ It may lead to riverine flooding in some river catchments (for riverine flooding please visit Web page of CWC)

Action Suggested

- ✓ Judicious regulation of surface transports including railways and roadways.
- ✓ Check for traffic congestion on your route before leaving for your destination.
- ✓ Follow any traffic advisories that are issued in this regard.
- ✓ Avoid going to areas that face the water logging problems often.
- ✓ Avoid staying in vulnerable structure

Agromet advisories for Heavy Rainfall likely over various parts of the country

- ✓ In Madhya Maharashtra region of **Maharashtra**, postpone harvesting of matured soybean, groundnut, maize and pearl millet. Immediately move the harvested produce to safer places and cover them with plastic sheets or tarpaulin.
- ✓ In Konkan region of **Maharashtra**, make arrangements to drain out excess water from rice, finger millet, turmeric, groundnut, vegetables and orchards.
- ✓ Make provision for draining out excess water from standing crop fields and fruit orchards to avoid water stagnation in Tamilnadu, Himachal Pradesh, Uttarakhand, East Uttar Pradesh, Madhya Pradesh, Chhattisgarh, Gujarat, Goa, West Bengal, Odisha, Bihar and Jharkhand.
- ✓ Keep the harvested produce at safer places.
- ✓ Provide mechanical support to horticultural crops & staking to vegetables.

Flash Flood Guidance:

ANNEXURE I

24 hours Outlook for the Flash Flood Risk (FFR) till 1130 IST of 29-09-2024:

Moderate to high flash flood risk likely over few watersheds & neighbourhoods of following Met Sub-divisions during next 24 hours.

East Uttar Pradesh - Balrampur, Sidharthnagar, Kushinagar, Maharajganj, Basti, Santkabirnagar, Gorakhpur, Ambedkarnagar, Azamgarh, Mau, Balia, Gazipur and Deoria districts.
Bihar - Gopalganj, Pachim Champaran, Purba Champaran, Siwan, Sitamrhi, Araria, Kishanganj and Saran districts.

SHWB & Sikkim - North Sikkim, East Sikkim, South Sikkim, West Sikkim, Darjeeling, Jalpaiguri, S and Cooch Behar districts.

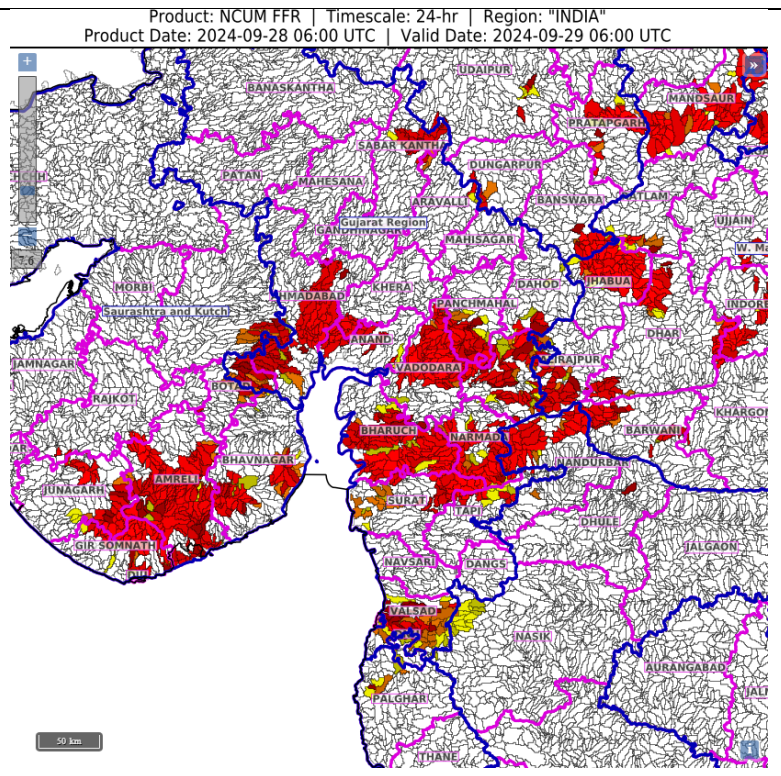
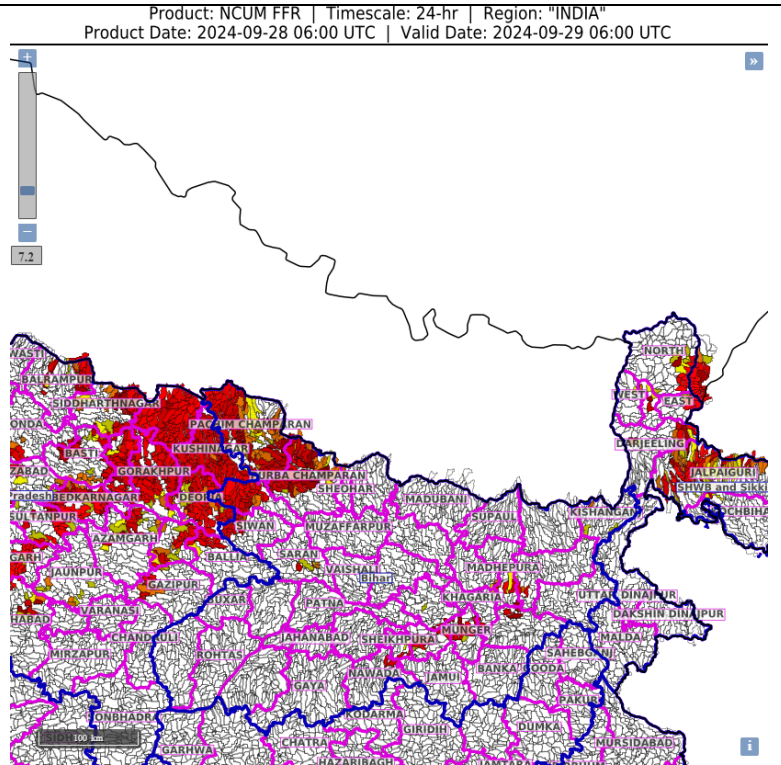
Surface runoff/ Inundation may occur at some fully saturated soils & low-lying areas over AoC as shown in map due to expected rainfall occurrence in next 24 hours.

24 hours Outlook for the Flash Flood Risk (FFR) till 1130 IST of 29-09-2024 :

Moderate flash flood risk likely over few watersheds & neighbourhoods of following Met Sub-divisions during next 24 hours.

South Gujarat Region - Dadar & Nagar Haveli, Daman, Anand, Bharuch, Chhota Udepur, Dahod, Dangs, Narmada, Navsari, Panchmahal, Surat, Tapi, Vadodara and Valsad districts.
Adjoining West Madhya Pradesh -Jhabua, Ratlam, Dhar, Indore and Ujjain districts.

Surface runoff/ Inundation may occur at some fully saturated soils & low-lying areas over AoC as shown in map due to expected rainfall occurrence in next 24 hours.



ANNEXURE II

Significant Rainfall recorded from 0830 hrs IST of Yesterday to 0830 hours IST of 28.09.2024 (in cm):

- ❖ **Sub-Himalayan West Bengal & Sikkim:** Nagarkata (dist Jalpaiguri) 27, Gajoldoba (dist Jalpaiguri) 25, Murti (dist Jalpaiguri) 23, Neora (dist Jalpaiguri) 23, Champasari (dist Darjeeling) 22, Chengmari/diana (dist Jalpaiguri) 22, Siliguri Pto (dist Darjeeling) 21, Sevoke (dist Darjeeling) 20, Hasimara (dist Alipurduar) 19, Buxaduar (dist Alipurduar) 18, Bhutanghat (dist Alipurduar) 18, Bagdogra Iaf (dist Darjeeling) 17, Jalpaiguri (dist Jalpaiguri) 16, Sukiapokhri (dist Darjeeling) 16, Alipurduar (pto) (dist Alipurduar) 16, Darjeeling (dist Darjeeling) 15, Damthang (dist Namchi) 14, Domohani (dist Jalpaiguri) 14, Lava (dist Kalimpong) 13, Dhupguri (dist Jalpaiguri) 13, Kalimpong (dist Kalimpong) 13, Jhallong (dist Kalimpong) 13, Amfu Kalimpong (dist Kalimpong) 12, Munsong (dist Darjeeling) 12, Kumargram (dist Alipurduar) 12, Rongo (dist Kalimpong) 12, Rongli (dist Pakyong) 12, Algarah (dist Kalimpong) 12, Nh31 Bridge (dist Jalpaiguri) 12, Amfu Pundibari (dist Cooch Behar) 12, Pedong (dist Kalimpong) 11, Ravangla Arg (dist Namchi) 11, Gyalsing (pto) (dist Gyalshing) 11, Gangtok (dist Gangtok) 11, Majitar (dist Pakyong) 10, Yuksom (dist Gyalshing) 10, Tadong (dist Gangtok) 10, Bagrakote (dist Jalpaiguri) 10, Khanitar (dist Pakyong) 9, Mathabhanga (dist Cooch Behar) 9, Kabi (dist Mangan) 9, Mangan (dist Mangan) 9, Pakyong (dist Pakyong) 9, Chepan (dist Alipurduar) 9, Mekhliganj (dist Cooch Behar) 7, Falakata (dist Alipurduar) 7, Dentam (dist Gyalshing) 7.
- ❖ **East Uttar Pradesh:** Basti Cwc (dist Basti) 26, Bansi Cwc (distSiddharth Nagar) 26, Nichlaul (dist Maharajganj) 24, Chanderdeepghat (dist Gorakhpur) 23, Bansgaon (dist Gorakhpur) 21, Birdghat (dist Gorakhpur) 20, Ayoadhya (dist Ayodhya) 20, Trimohani Ghat Fmo (dist Maharajganj) 18, Mankapur (dist Gonda) 18, Balrampur (distBalrampur) 18, Tanda (dist Ambedkar Nagar) 17, Mehdawal (dist Sant Kabir Nagar) 17, UskaBazar Fmo (dist Siddharth Nagar) 17, Mukhispur (dist Gorakhpur) 17, Gorakhpur (distGorakhpur) 15, Nautanwa (dist Maharajganj) 15, Naugarh (dist Siddharth Nagar) 14, Dhanghata(dist Sant Kabir Nagar) 14, Gonda Sadar (dist Gonda) 14, Domeriaganj (dist Siddharth Nagar)13, Shoharatgarh (dist Siddharth Nagar) 13, Basti Obsy (dist Basti) 13, Maharajganj (distMaharajganj) 13, Regoli (dist Gorakhpur) 13, Khalilabad (dist Sant Kabir Nagar) 12, Pharenda(dist Maharajganj) 12, Akbarpur (dist Ambedkar Nagar) 12, Balrampur(t) (dist Balrampur) 12, Kakrahi (dist Siddharth Nagar) 12, Sultanpur Obsy (dist Sultanpur) 11, Akbarpur Fmo (distAmbedkar Nagar) 10, Pratapgarh (t) (dist Pratapgarh) 10, Tulasipur (dist Balrampur) 10, Itwa(dist Siddharth Nagar) 9, Tarabganj (dist Gonda) 9, Lambhuaa (dist Sultanpur) 9, Salempur(dist Deoria) 9, Raniganj (dist Pratapgarh) 9, Azamgarh (dist Azamgarh) 8, Ayodhya (ag) (distAyodhya) 8, Sultanpur Cwc (dist Sultanpur) 8, Kanpur Iaf (dist Kanpur City) 7, Dhaurahara (distKheri) 7, Amethi (dist Amethi) 7, Patti (dist Pratapgarh) 7, Ghosi (dist Mau) 7, Haidargarh (distBarabanki) 7, Ikauna (dist Shrawasti) 7, Phaphmau Fmo (dist Prayagraj) 7, Karchhana (distPrayagraj) 7, Padrauna (dist Kushi Nagar) 7, Bikapur (dist Ayodhya) 7.
- ❖ **Bihar:** Tribeni/balmikinagar (dist West Champaran) 23, Chanpatia (dist West Champaran) 21, Motihari (dist East Champaran) 20, Gaunaha (dist West Champaran) 19, Lauria Nandangarh(dist West Champaran) 19, Bettiah (dist West Champaran) 19, Patahi (dist East Champaran) 18, Thakrahan (dist West Champaran) 18, Sikta (dist West Champaran) 18, Adapur (dist East Champaran) 17, Tedhagach (dist Kishanganj) 17, Sugauli (dist East Champaran) 16, Ramnagar (dist West Champaran) 15, Turkaulia (dist East Champaran) 15, Harsidhi (dist East Champaran) 15, Sangrampur (dist East Champaran) 14, Chatia (dist East Champaran) 14, Birpur (dist Supaul) 14, Lalbegiaghat (dist East Champaran) 13, Gopalganj (dist Gopalganj) 13, Banjaria (dist East Champaran) 12, Kotwa (dist East Champaran) 12, Areraj (dist East Champaran) 12, Thawe (dist Gopalganj) 12, Raxual (dist East Champaran) 11, Dighalbank (dist Kishanganj) 11, Mairwa (dist Siwan) 11, Thakurganj (dist Kishanganj) 11, Madhubani (dist West Champaran) 11, Ziradei (dist Siwan) 11, Piprakothi (dist East Champaran) 11, Bhore (dist Gopalganj) 11, Siwan Sadar (dist Siwan) 11, Kalyanpur (dist East Champaran) 11, Baitunthpur (dist Gopalganj) 10, Nautan (dist West Champaran) 10, Pachdeuri (dist Gopalganj) 10, Hathwa (dist Gopalganj) 10, Dhengbridge (dist Sitamarhi) 10, Bahadurganj (dist Kishanganj) 10, Barauli (dist Gopalganj) 10, Bijaipur (dist

* Red colour warning does not mean "Red Alert", Red colour warning means "Take Action".

Forecast and Warning for any day is valid from 0830 hours IST of day till 0830 hours IST of next day.

For more details, kindly visit <https://mausam.imd.gov.in> or contact: 011-2434-4599

(Service to the Nation since 1875)

- Gopalganj) 10, Dhaka (dist East Champaran) 9, Kataiya (dist Gopalganj) 9, Kessariah (dist East Champaran) 9, Ahirwalia (dist East Champaran) 9, Pratapganj (dist Supaul) 8, Lakri Nabiganj (dist Siwan) 8, Bagaha (dist West Champaran) 8, Barharia (dist Siwan) 7, Pothia (dist Kishanganj) 7, Sattar Kataiya (dist Saharsa) 7, Mahedi/mehshi (dist East Champaran) 7, Kursakanta (dist Araria) 7, Taibpur (dist Kishanganj) 7, Chakia (dist East Champaran) 7, Phulwaria (dist Gopalganj) 7, Darauli (dist Siwan) 7, Kishanganj (dist Kishanganj) 7, Narpatganj (dist Araria) 7, Forbesganj (dist Araria) 7.
- ❖ **Madhya Maharashtra:** Lonavala_agri (dist Pune) 19, Navapur (dist Nandurbar) 8, Trimbakshwar (dist Nashik) 7, Igatpuri (dist Nashik) 7.
 - ❖ **Gujarat Region:** Sagbara (dist Narmada) 17, Surat City (dist Surat) 16, Umerpada (dist Surat) 10, Jalalpor (dist Navsari) 9, Navsari (dist Navsari) 8, Daman Fmo (dist Daman) 8, Dholka (dist Ahmedabad) 7, Gandevi (dist Navsari) 7, Umergam (dist Valsad) 7, Danta (dist Banaskantha) 7, Vadodara (dist Vadodara) 7, Vadali (dist Sabarkantha) 7, Pardi (dist Valsad) 7, Navasari_aws (dist Navsari) 7.
 - ❖ **West Madhya Pradesh:** Sardarpur (dist Dhar) 15, Jabot (dist Alirajpur) 13, Barod (dist Agar-malwa) 12, Kathiwada (dist Alirajpur) 10, Rajpur (dist Barwani) 9, Alirajpur (dist Alirajpur) 9, Susner (dist Agar-malwa) 8, Ranapur (dist Jhabua) 8, Ichhawar (dist Sehore) 8, Udaigarh (dist Alirajpur) 8, Gautampura (dist Indore) 7, Anjad (dist Barwani) 7, Sondwa (dist Alirajpur) 7, Vidisha (dist Vidisha) 7.
 - ❖ **Saurashtra & Kutch:** Lakhtar (dist Surendranagar) 14, Junagadh (dist Junagadh) 12, Dhoraji (dist Rajkot) 12, Porbandar (dist Porbandar) 11, Manavadar (dist Junagadh) 11, Mangrol(j) (dist Junagadh) 10, Bhanvad (dist Devbhoomi Dwarka) 10, Upleta (dist Rajkot) 10, Ranavav (dist Porbandar) 9, Talala (dist Gir Somnath) 9, Vanthali (dist Junagadh) 8, Lalpur (dist Jamnagar) 7, Visavadar (dist Junagadh) 7.
 - ❖ **Konkan & Goa:** Matheran (dist Raigad) 12, Pen (dist Raigad) 9, Karjat_agri (dist Raigad) 8, Mokheda - Fmo (dist Palghar) 8, Jawhar (dist Palghar) 8, Vikramgad (dist Palghar) 8, Uran (dist Raigad) 7, Murud (dist Raigad) 7.
 - ❖ **Himachal Pradesh:** Naina Davi (dist Bilaspur) 8.
 - ❖ **RAYALASEEMA:** Chittoor (dist Chittoor) 8.
 - ❖ **Tamil Nadu, Puducherry & Karaikal:** Sattur (dist Virudhunagar), Srivilliputhur (dist Virudhunagar) 8 Each; Vazhapadi (dist Salem) 7.
 - ❖ **East Rajasthan:** Manohar Thana (dist Jhalawar) 7, Dungarpur Tehsil Sr (dist Dungarpur) 7.
 - ❖ **Chhattisgarh:** Chando (dist Balrampur) 7.
 - ❖ **Uttarakhand:** Jollyghat (dist Dehradun) 7, Narendranagar (dist Garwal Tehri) 7.
 - ❖ **Assam & Meghalaya:** Dhubri_Cwc (dist Dhubri) 7.

Fig. 1: Maximum Temperatures

Fig. 2: Departure of Maximum Temperatures

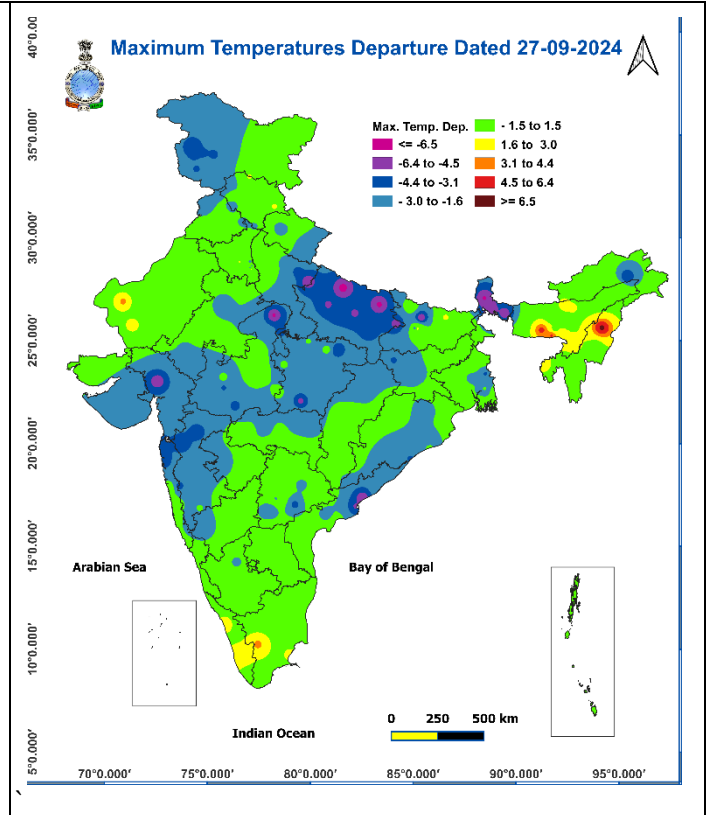
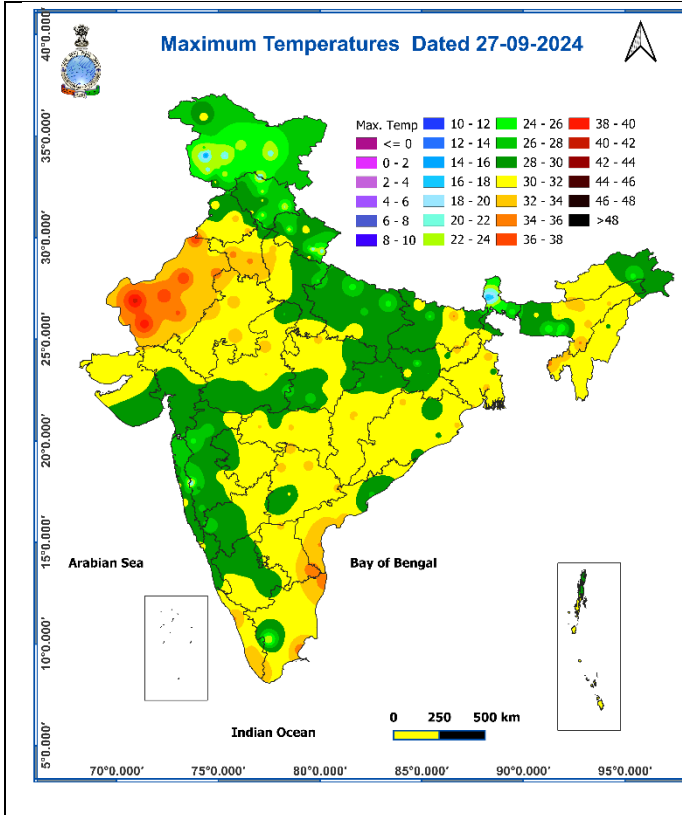


Fig. 3: Minimum Temperatures

Fig. 4: Departure of Minimum Temperatures

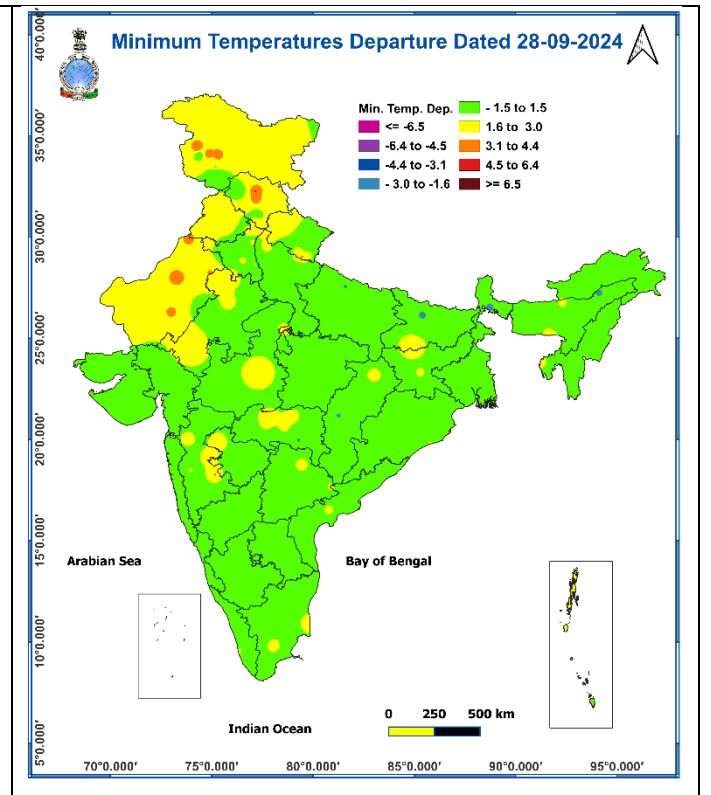
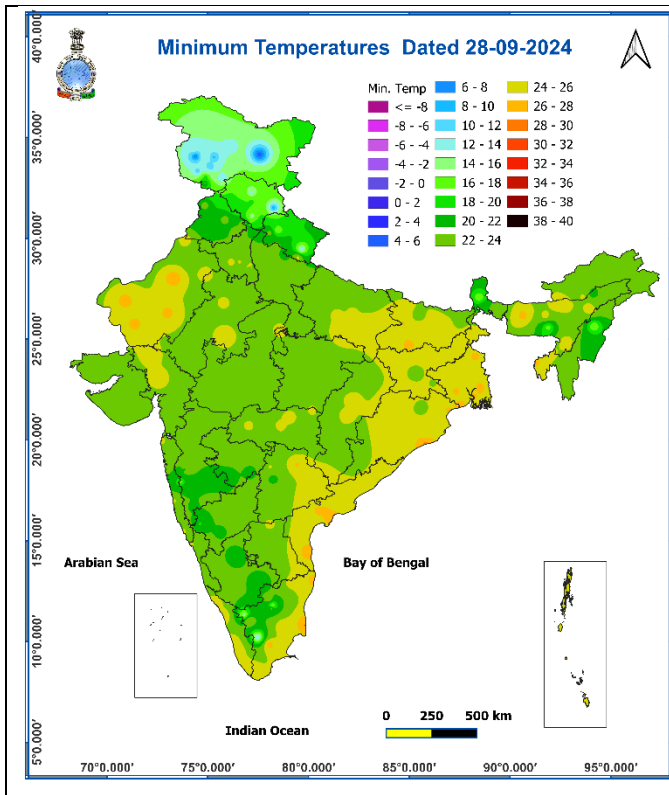
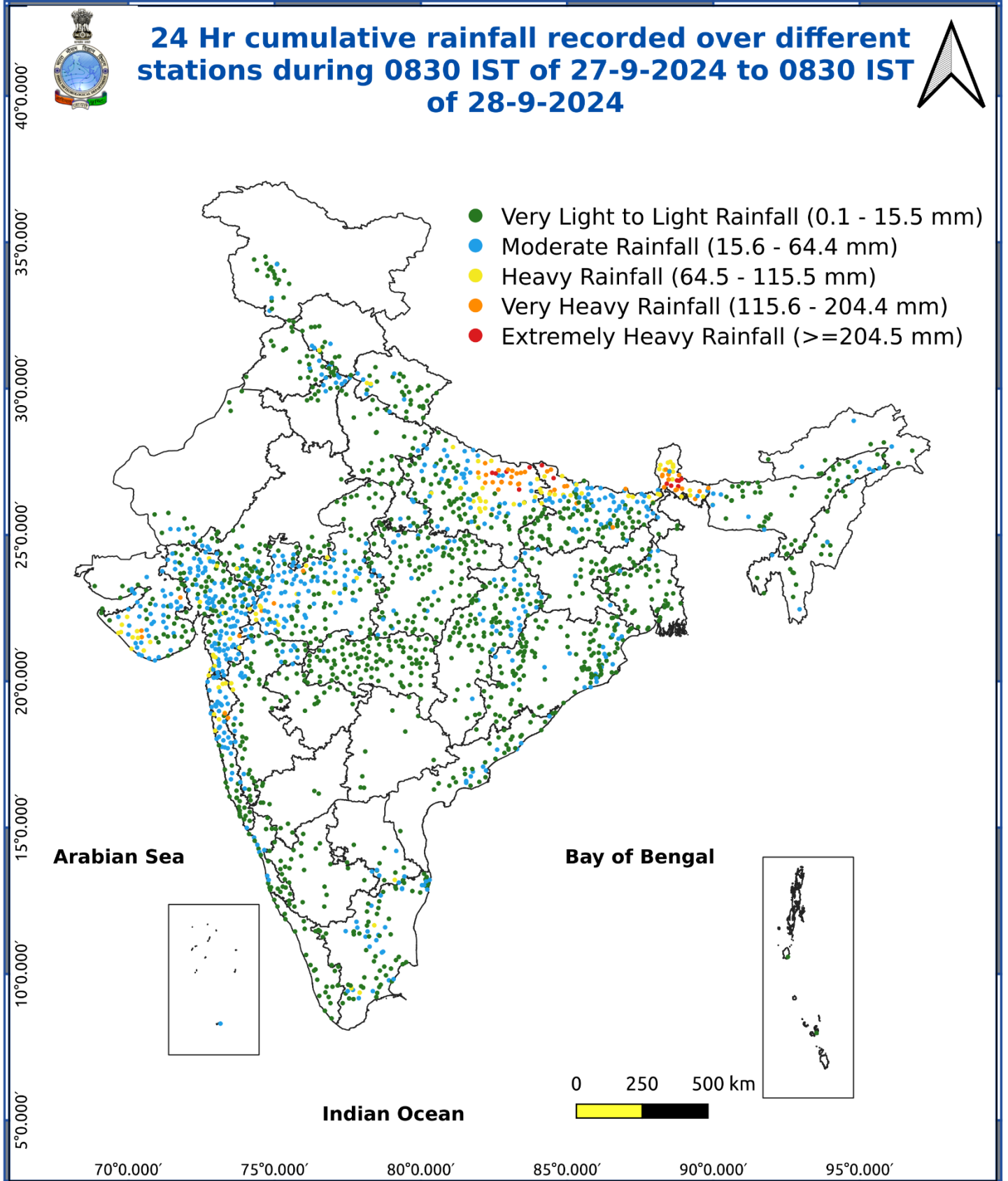


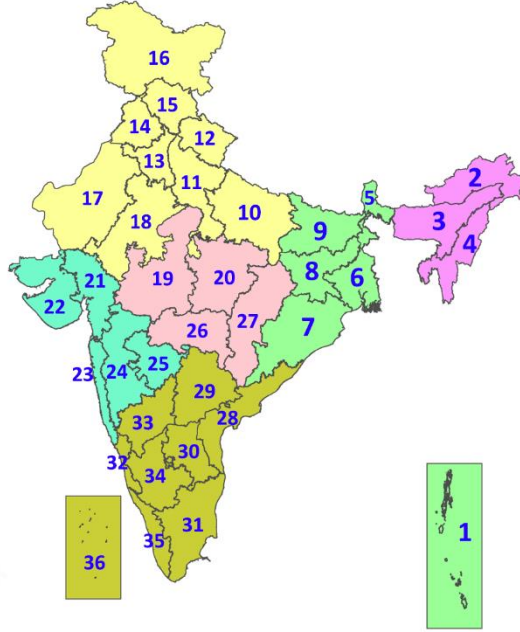
Fig. 5: Accumulated Rainfall (mm) during past 24 hours



* Red colour warning does not mean "Red Alert", Red colour warning means "Take Action".
Forecast and Warning for any day is valid from 0830 hours IST of day till 0830 hours IST of next day.
For more details, kindly visit <https://mausam.imd.gov.in> or contact: 011-2434-4599
(Service to the Nation since 1875)

LEGENDS

1. अंडमान और निकोबार द्वीपसमूह
2. अरुणाचल प्रदेश
3. असम और मेघालय
4. नागालैंड, मणिपुर, मिजोरम और त्रिपुरा
5. उप-हिमालयी पश्चिम बंगाल और सिक्किम
6. गंगीय पश्चिम बंगाल
7. ओडिशा
8. झारखंड
9. बिहार
10. पूर्वी उत्तर प्रदेश
11. पश्चिम उत्तर प्रदेश
12. उत्तराखंड
13. हरियाणा, चंडीगढ़ और दिल्ली
14. पंजाब
15. हिमाचल प्रदेश
16. जम्मू और कश्मीर और लद्दाख
17. पश्चिम राजस्थान
18. पूर्वी राजस्थान
19. पश्चिम मध्य प्रदेश
20. पूर्वी मध्य प्रदेश
21. गुजरात
22. सौराष्ट्र
23. कोंकण और गोवा
24. मध्य महाराष्ट्र
25. मराठवाड़ा
26. विदर्भ
27. छत्तीसगढ़
28. तटीय आंध्र प्रदेश और यनम
29. तेलंगाना
30. रायलसीमा
31. तमिलनाडु, पुडुचेरी और कराईकल
32. तटीय कर्नाटक
33. आंतरिक उत्तरी कर्नाटक
34. आंतरिक दक्षिणी कर्नाटक
35. केरल और माहे
36. लक्षद्वीप



1. Andaman & Nicobar Islands
2. Arunachal Pradesh
3. Assam & Meghalaya
4. Nagaland, Manipur, Mizoram & Tripura
5. Sub-Himalayan West Bengal & Sikkim
6. Gangetic West Bengal
7. Odisha
8. Jharkhand
9. Bihar
10. East Uttar Pradesh
11. West Uttar Pradesh
12. Uttarakhand
13. Haryana, Chandigarh & Delhi
14. Punjab
15. Himachal Pradesh
16. Jammu & Kashmir and Ladakh
17. West Rajasthan
18. East Rajasthan
19. West Madhya Pradesh
20. East Madhya Pradesh
21. Gujarat
22. Saurashtra
23. Konkan & Goa
24. Madhya Maharashtra
25. Marathwada
26. Vidarbha
27. Chhattisgarh
28. Coastal Andhra Pradesh & Yanam
29. Telangana
30. Rayalaseema
31. Tamilnadu, Puducherry & Karaikal
32. Coastal Karnataka
33. North Interior Karnataka
34. South Interior Karnataka
35. Kerala & Mahe
36. Lakshadweep

SPATIAL DISTRIBUTION (% of Stations reporting)

% Stations	Category	% Stations	Category
76-100	Widespread (WS/Most Places)	26-50	Scattered (SCT/A Few Places)
51-75	Fairly Widespread (FWS/Many Places)	1-25	Isolated (ISOL)



COLOUR CODED WARNING

No Warning (No Action)
Watch (Be Aware)
Alert (Be Prepared To Take Action)
Warning (Take Action)

Probabilistic Forecast

Terms	Probability of Occurrence (%)
Unlikely	< 25
Likely	25 - 50
Very Likely	50 - 75
Most Likely	> 75

DEFINITION/CRITERIA

Rain/ Snow *	<p>Heavy: 64.5 to 115.5 mm/cm *</p> <p>Very Heavy: 115.6 to 204.4 mm/cm*</p> <p>Extremely Heavy: > 204.4 mm/cm *</p>
Heat Wave	<p>When maximum temperature of a station reaches $\geq 40^\circ\text{C}$ for plains and $\geq 30^\circ\text{C}$ for hilly regions</p> <p>(a) Based on Departure from normal</p> <p>Heat Wave: Maximum Temperature Departure from normal 4.5°C to 6.4°C.</p> <p>Severe Heat Wave: Maximum Temperature Departure from normal $\geq 6.5^\circ\text{C}$</p> <p>(b). Based on Actual maximum temperature</p> <p>Heat Wave: When actual maximum temperature $\geq 45^\circ\text{C}$.</p> <p>Severe Heat Wave: When actual maximum temperature $\geq 47^\circ\text{C}$</p> <p>(c). Criteria for heat wave for coastal stations</p> <p>When maximum temperature departure is $>4.5^\circ\text{C}$ from normal. Heat Wave may be described provided maximum temperature $\geq 37^\circ\text{C}$</p>
Warm Night	<p>When maximum temperature remains 40°C</p> <p>Warm Night: When minimum temperature departure 4.5°C to 6.4°C.</p> <p>Severe Warm Night: When minimum temperature departure $>6.4^\circ\text{C}$.</p>
Cold Wave	<p>When minimum temperature of a station $\leq 10^\circ\text{C}$ for plains and $\leq 0^\circ\text{C}$ for hilly regions.</p> <p>(a). Based on departure</p> <p>Cold Wave: Minimum Temperature Departure from normal -4.5°C to -6.4°C.</p> <p>Severe Cold Wave: Minimum Temperature Departure from normal $\leq -6.5^\circ\text{C}$</p> <p>(b) Based on actual Minimum Temperature (for Plains only)</p> <p>Cold Wave : When Minimum Temperature is $\leq 4.0^\circ\text{C}$</p> <p>Severe Cold Wave: When Minimum Temperature is $\leq 2.0^\circ\text{C}$</p> <p>(c) For Coastal Stations</p> <p>When Minimum Temperature departure is $\leq -4.5^\circ\text{C}$ & actual Minimum Temperature is $\leq 15^\circ\text{C}$</p>
Cold Day	<p>When minimum temperature of a station $\leq 10^\circ\text{C}$ for plains and $\leq 0^\circ\text{C}$ for hilly regions</p> <p>Based on departure</p> <p>Cold Day: Maximum Temperature Departure from normal -4.5°C to -6.4°C.</p> <p>Severe Cold Day: Maximum Temperature Departure from normal $\leq -6.5^\circ\text{C}$</p>
Fog	<p>Phenomenon of small droplets suspended in air and the horizontal visibility $< 1\text{km}$</p> <p>Moderate Fog: When the visibility between 500-200 metres</p> <p>Dense Fog: when the visibility between 50- 200 metres</p> <p>Very Dense Fog: when the visibility < 50 metres</p>
Thunderstorm	<p>Sudden electrical discharges manifested by a flash of light (Lightning) and a sharp rumbling sound (thunder)</p>
Dust/Sand Storm	<p>An ensemble of particles of dust or sand energetically lifted to great heights by a strong and turbulent wind.</p>
Frost	<p>Ice deposits on ground</p> <p>Air temperature $\leq 4^\circ\text{C}$ (over Plains)</p>
Squall	<p>A strong wind that rises suddenly, lasts for atleast 1 minute.</p> <p>Moderate: Wind speed 52-61 kmph</p> <p>Severe: Wind speed 62-87 kmph</p> <p>Very Severe: Wind speed >87 kmph</p>
Sea State	<p>Effect of various waves in the sea over specific area</p> <p>Rough to very rough: Wind speed 41-62 kmph (22-33 knots) & Wave height 2.5-6 metre</p> <p>High to very high: Wind speed 63-117 kmph (34-63 knots) & Wave height 6-14 metre</p> <p>Phenomenal: Wind speed >117 kmph (>63 knots) & Wave height >14 metre</p>
Cyclone	<p>Cyclonic Storm: Wind speed 62-87 kmph (34-47 knots)</p> <p>Severe Cyclonic Storm: Wind speed 88-117 kmph (48-63 knots)</p> <p>Very Severe Cyclonic Storm: Wind speed 118-165 kmph (64 - 89 knots)</p> <p>Extremely Severe Cyclonic Storm: Wind speed 166-220 kmph (90 -119 knots)</p> <p>Super Cyclone Strom: Wind speed >220 kmph (>119 knots)</p>