



2025-06-18

Time of Issue: 13:30:00 hours IST  
(Mid-Day)

## ALL INDIA WEATHER SUMMARY AND FORECAST BULLETIN

### Significant Weather Features

#### Weather Forecast and Warnings

##### East & Central India:

Light/moderate rainfall at most/many places accompanied with **thunderstorm, lightning & gusty winds speed reaching 40-50 kmph** likely over Andaman & Nicobar Islands on 18<sup>th</sup> & 19<sup>th</sup>; Madhya Pradesh, Vidarbha, Chhattisgarh, Gangetic West Bengal, Bihar, Jharkhand, Odisha during 18<sup>th</sup>-22<sup>nd</sup> with **Thundersquall (wind speed reaching 50-60 kmph gusting to 70 kmph)** very likely at isolated places over Madhya Pradesh on 18<sup>th</sup> & 19<sup>th</sup> June.

Isolated **heavy rainfall** also likely over Sub-Himalayan West Bengal & Sikkim during 18<sup>th</sup>, 19<sup>th</sup>, 22<sup>nd</sup> & 23<sup>rd</sup>, Gangetic West Bengal on 23<sup>rd</sup> & 24<sup>th</sup>, Bihar, Jharkhand, Odisha during 18<sup>th</sup>-22<sup>nd</sup>, Madhya Pradesh during 18<sup>th</sup>-23<sup>rd</sup> June with **very heavy rainfall** over Bihar on 18<sup>th</sup> & 19<sup>th</sup>, Gangetic West Bengal, Odisha on 19<sup>th</sup>, Jharkhand on 20<sup>th</sup>, emp during 20<sup>th</sup>-23<sup>rd</sup>, West Madhya Pradesh on 22<sup>nd</sup> & 23<sup>rd</sup> and over Chhattisgarh during 18<sup>th</sup>-20<sup>th</sup> June.

**Extremely heavy rainfall (>20 cm/24 hours)** likely at isolated places over Gangetic West Bengal, Odisha 18<sup>th</sup>; Jharkhand on 18<sup>th</sup> & 19<sup>th</sup> June.

##### West India:

Light/moderate rainfall at most/many places likely over Gujarat State, Konkan & Goa, Madhya Maharashtra, Marathwada during 18<sup>th</sup>-24<sup>th</sup> June.

Isolated **heavy rainfall** likely over Konkan & Goa, Madhya Maharashtra, Gujarat Region during 18<sup>th</sup>-24<sup>th</sup>; Saurashtra & Kutch during 18<sup>th</sup>-19<sup>th</sup> and 22<sup>nd</sup>-24<sup>th</sup> with **very heavy rainfall** on Konkan & Goa, Madhya Maharashtra on 18<sup>th</sup> & 19<sup>th</sup>, Gujarat State on 18<sup>th</sup> June.

##### South Peninsular India:

Light/moderate rainfall at many/some places accompanied with isolated **thunderstorm, lightning** over Tamil Nadu, Puducherry & Karaikal, Kerala & Mahe, Lakshadweep, Karnataka during 18<sup>th</sup>-19<sup>th</sup>; Coastal Andhra Pradesh & Yanam, Rayalaseema, Telangana during 18<sup>th</sup>-20<sup>th</sup> June.

Isolated **heavy rainfall** likely over Tamil Nadu on 18<sup>th</sup>, Kerala & Mahe on 18<sup>th</sup>, 19<sup>th</sup> & 22<sup>nd</sup>, Coastal Karnataka on 18<sup>th</sup>, 23<sup>rd</sup> & 24<sup>th</sup> June.

**Strong surface winds** (speed reaching 40-60 kmph) very likely over Kerala & Mahe, Lakshadweep, Karnataka on 18<sup>th</sup> & 19<sup>th</sup>, Coastal Andhra Pradesh & Yanam, Rayalaseema during 18<sup>th</sup>-21<sup>st</sup> June.

##### Northeast India:

Light/moderate rainfall at many/most places accompanied with **thunderstorm, lightning and isolated heavy to very heavy rainfall** likely to continue over Northeast India during next 7 days with **extremely heavy rainfall** over Meghalaya on 18<sup>th</sup> June.

##### Northwest India:

Light/moderate rainfall at some/many places accompanied with **thunderstorm, lightning & gusty winds speed reaching 40-50 kmph** likely over Northwest India during 18<sup>th</sup>-24<sup>th</sup> June.

**\*Red color warning does not mean "Red Alert" Red color warning means "Take Action"**

Forecast and warning for any day is valid from 0830 hours IST of day till 0830 hours IST of next day

For more details kindly visit <https://mausam.imd.gov.in> or contact 011-2434-4599

(Service to the nation since 1875)



Isolated **heavy rainfall** likely over Uttarakhand, Uttar Pradesh, East Rajasthan during 18<sup>th</sup>-24<sup>th</sup>; Uttarakhand, Himachal Pradesh, Jammu-Kashmir-Ladakh-Gilgit-Baltistan-Muzaffarabad on 22<sup>nd</sup>, Haryana, Chandigarh during 20<sup>th</sup>-23<sup>rd</sup> West Rajasthan on 18<sup>th</sup> with **very heavy rainfall** on East Rajasthan on 18<sup>th</sup>, 19<sup>th</sup>, 22<sup>nd</sup> & 23<sup>rd</sup>, Uttar Pradesh during 19<sup>th</sup>-22<sup>nd</sup>, during 21<sup>st</sup>-23<sup>rd</sup>, Himachal Pradesh on 22<sup>nd</sup> & 23<sup>rd</sup> June.

**Maximum Temperature Forecast:**

Fall by 2-3°C in maximum temperatures likely over Central India during next 3 days and no large change thereafter. No significant change in maximum temperatures likely over rest parts of the country. **Hot & Humid Conditions warnings: Hot & Humid conditions** very likely in isolated pockets of Tamil Nadu on 18<sup>th</sup> & 19<sup>th</sup>, Coastal Andhra Pradesh & Yanam, Rayalaseema during 18<sup>th</sup>-22<sup>nd</sup> June.



### Main Weather Observations:

❖ **Rainfall distribution** (from 0830 hours IST of yesterday to 0830 hours IST of today): **at most places** over Arunachal Pradesh, Nagaland, Manipur, Mizoram & Tripura, Gangetic West Bengal, Odisha, Jharkhand, Haryana-Chandigarh-Delhi, Himachal Pradesh, East Rajasthan, Gujarat Region, Saurashtra & Kutch, Konkan & Goa, Coastal Karnataka, Kerala & Mahe and Lakshadweep; **at many places** over Andaman & Nicobar Islands, Assam & Meghalaya, Sub Himalayan West Bengal & Sikkim, West Uttar Pradesh, Uttarakhand, East Madhya Pradesh, Chhattisgarh and South Interior Karnataka; **at a few places** over East Uttar Pradesh, Punjab, West Rajasthan, West Madhya Pradesh, Madhya Maharashtra and North Interior Karnataka; **at isolated places** over Jammu-Kashmir-Ladakh-Gilgit-Baltistan-Muzaffarabad, Marathwada, Coastal Andhra Pradesh & Yanam, Telangana, Rayalaseema and Tamil Nadu, Puducherry & Karaikal; **Dry** over rest of the country.

❖ **Significant rainfall recorded(in cm)** (from 0830 hours IST of yesterday to 0830 hours IST of today): **West Madhya Pradesh:** Narwar (dist Shivpuri) 16; **Saurashtra & Kutch:** Sayla (dist Surendranagar) 16; Barvala (dist Botad) 15; Botad (dist Botad) 14; Jodia (dist Jamnagar), Muli (dist Surendranagar) 13 Each; Umralla (dist Bhavnagar) 12; Kandla Airport (dist Kutch), Kandla New (dist Kutch), Thangadh (dist Surendranagar), Vallabhipur (dist Bhavnagar) 11 Each; Chuda (dist Surendranagar) 10; Gandhidham (dist Kutch) 9; Anjar (dist Kutch) 8; Malia Miana (dist Morbi), Halvad (dist Morbi), Okha (dist Devbhoomi Dwarka), Nakhatrana (dist Kutch) 7 Each; **Jharkhand:** Arki (dist Khunti) 15; Kuru (dist Lohardaga), Bandgaon (dist West Singhbhum) 14 Each; Ranchi AP (dist Ranchi) 13; Mandar (dist Ranchi), Gobindpur Dvc (dist Dhanbad) 12 Each; Maithon (dist Dhanbad), Burmu (dist Ranchi), Khalaria (dist Ranchi), Maithon Dvc (dist Dhanbad) 11 Each; Chandwa (dist Latehar), Murhu (dist Khunti), Herhanj (dist Latehar) 10 Each; Panki (dist Palamu), Putki (dist Dhanbad), Latehar (dist Latehar), Tenughat (dist Bokaro), Jamtara Fmo (dist Jamtara), Shilaichak (dist Chatra), Icar Namkum (dist Ranchi), Bau Kanke (dist Ranchi) 9 Each; Chandil (dist Seraikela-kharsawan), Putki Dvc (dist Dhanbad), Boram (dist East Singhbhum), Gurabandha (dist East Singhbhum), Bariyatu (dist Latehar) 8 Each; Nimdih (dist Seraikela-kharsawan), Jamtara (dist Jamtara), Kalebira (dist Simdega), Nandadih (dist Giridih), Dhanbad (dist Dhanbad), Jamshedpur (dist East Singhbhum), Hendigir (dist Hazaribag), Bano Simdega Kvk AWS (dist Simdega), Nala (dist Jamtara), Fatehpur (dist Jamtara), Sisai (dist Gumla), Panchet (dist Dhanbad) 7 Each; **Assam & Meghalaya:** N.lakhimpur/Lilabari (dist Lakhimpur) 14; Chauldhowaghat (dist Lakhimpur) 12; Cherrapunji(rkm) (dist East Khasi Hills) 9; Mawsynram (dist East Khasi Hills) 8; Bihubar (dist Sibsagar), Neamatighat (dist Jorhat) 7 Each; **Odisha:** Joda (dist Keonjhar) 13; Tiring (dist Mayurbhanj) 12; Banspal (dist Keonjhar) 10; Tensa (dist Sundargarh) 9; Banaigarh (dist Sundargarh) 8; Telkoi (dist Keonjhar), Naktideul (dist Sambalpur) 7 Each; **Kerala & Mahe:** Taliparamba (dist Cannur) 12; Chemberi AWS (dist Cannur) 8; Tellichery (dist Cannur) 7; **Coastal Karnataka:** Uppinangadi (dist Dakshina Kannada) 12; Mudubidre (dist Dakshina Kannada), Castle Rock (dist Uttara Kannada) 10 Each; Belthangadi (dist Dakshina Kannada) 8; Dharmasthala (dist Dakshina Kannada) 7; **Gangetic West Bengal:** Asansol(CWC) (dist Paschim Bardhaman) 12; Asansol (dist Paschim Bardhaman) 11; Simula (dist Purulia), Burnpur (dist Paschim Bardhaman) 9 Each; Bankura(CWC) (dist Bankura), Amtala (dist Murshidabad) 8 Each; Bankura (dist Bankura), Burdwan PTO (dist Purba Bardhaman), Manteswar (dist Purba Bardhaman) 7 Each; **East Madhya Pradesh:** Dindori-aws (dist Dindori) 11; Gaurihar (dist Chhatarpur) 9; Badamalhera (dist Chhatarpur) 7; **South Interior Karnataka:** Kottigehara (dist Chikkamagaluru) 10; Bhagamandala (dist Kodagu) 9; Kalasa (dist Chikkamagaluru) 7; **East Rajasthan:** Kaman (dist Bharatpur) 10; Sikrai (dist Dausa) 8; Todabhim (dist Karauli), Girva SR (dist Udaipur) 7 Each; **Haryana-Chandigarh-Delhi:** Bawal (dist Rewari) 10; Nuh (dist Nuh) 9; Bawal AWS (dist Rewari) 8; Manethi REV (dist Rewari) 7; **East Uttar Pradesh:** Bahraich (dist Bahraich) 9; **West Uttar Pradesh:** Jhansi (dist Jhansi) 9; Baheri (dist Bareilly), Aliganj (dist Etah) 7 Each; **North Interior Karnataka:** Londa (dist Belagavi) 8; **Tamil Nadu, Puducherry & Karaikal:** Avalanche (dist Nilgiris) 8; Chinnakalar (dist Coimbatore) 7; **Madhya Maharashtra:** Radhanagari (dist Kolhapur), Shahuwadi (dist Kolhapur) 8 Each; Mahabaleshwar (dist Satara) 7; **Gujarat Region:** Deodar (dist Banaskantha), Borsad (dist Anand) 8 Each; **West Rajasthan:** Raniwada SR (dist Jalore) 8; **Punjab:** Nabha (dist Patiala) 8; **Konkan & Goa:** Mandangad (dist Ratnagiri) 7.

❖ **Heavy Rainfall observed** (from 0830 hours IST of yesterday to 0830 hours IST of today): **Heavy to very heavy rain** at isolated places over Assam & Meghalaya, Gangetic West Bengal, Odisha, Jharkhand, West Madhya Pradesh, Saurashtra & Kutch, Coastal Karnataka and Kerala & Mahe. **Heavy rain** at a few places over Jharkhand and at isolated places over East Uttar Pradesh, West Uttar Pradesh, Haryana-Chandigarh-Delhi, Punjab, West Rajasthan, East Rajasthan, East Madhya Pradesh, Gujarat Region, Konkan & Goa, Madhya Maharashtra, Tamil Nadu, Puducherry & Karaikal, North Interior Karnataka and South Interior Karnataka.

❖ **Minimum Temperature Departures (as on 18-06-2025):** **markedly above normal(> 5.1°C)** at few places over East Madhya Pradesh; at isolated places over Assam & Meghalaya, Sub Himalayan West Bengal & Sikkim, Bihar, West Uttar Pradesh, Himachal Pradesh, West Rajasthan and Saurashtra & Kutch. **appreciably above normal(3.1°C)**

\*Red color warning does not mean "Red Alert" Red color warning means "Take Action"

Forecast and warning for any day is valid from 0830 hours IST of day till 0830 hours IST of next day

For more details kindly visit <https://mausam.imd.gov.in> or contact 011-2434-4599

(Service to the nation since 1875)

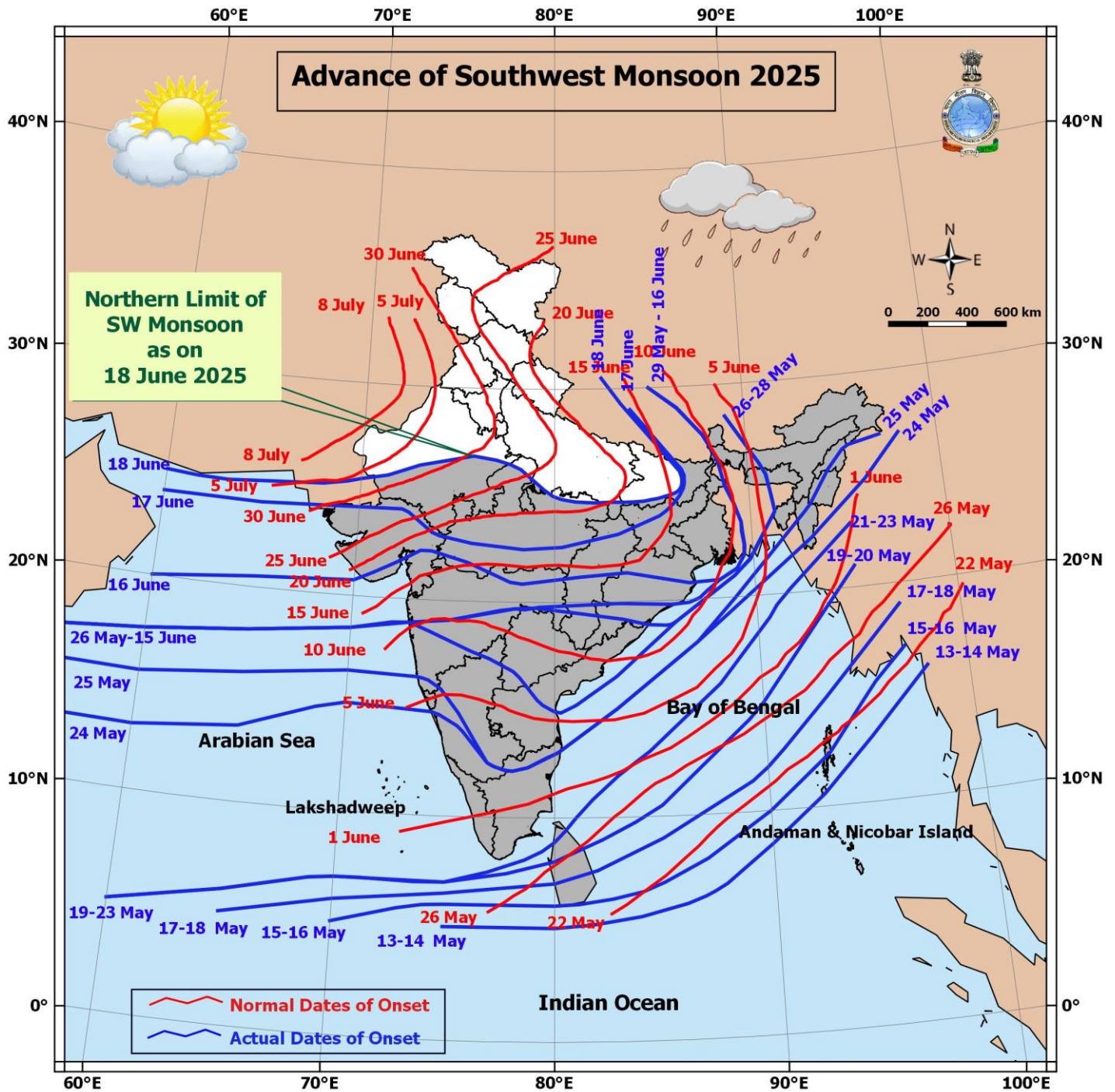
**to 5.0°C)** at isolated places over Odisha, East Uttar Pradesh, Jammu-KashmirLadakh-Gilgit-Baltistan-Muzaffarabad, West Madhya Pradesh and Coastal Andhra Pradesh & Yanam. **above normal(1.6°C to 3.0°C)** at few places over Gujarat Region, Vidarbha and Lakshadweep; at isolated places over Andaman & Nicobar Islands, Nagaland, Manipur, Mizoram & Tripura, Gangetic West Bengal, Haryana-Chandigarh-Delhi, Punjab, Konkan & Goa, Madhya Maharashtra, Chhattisgarh, Telangana, Rayalaseema and Tamil Nadu, Puducherry & Karaikal. **near normal(-1.5°C to 1.5°C)** at many places over Kerala & Mahe; at most places over Arunachal Pradesh, Uttarakhand, Marathwada, Coastal Karnataka, North Interior Karnataka and South Interior Karnataka; at few places over Jharkhand and East Rajasthan. **The lowest minimum temperature** of 19.0°C was reported at MATHERAN (MAHARASHTRA) over the Plains of India.

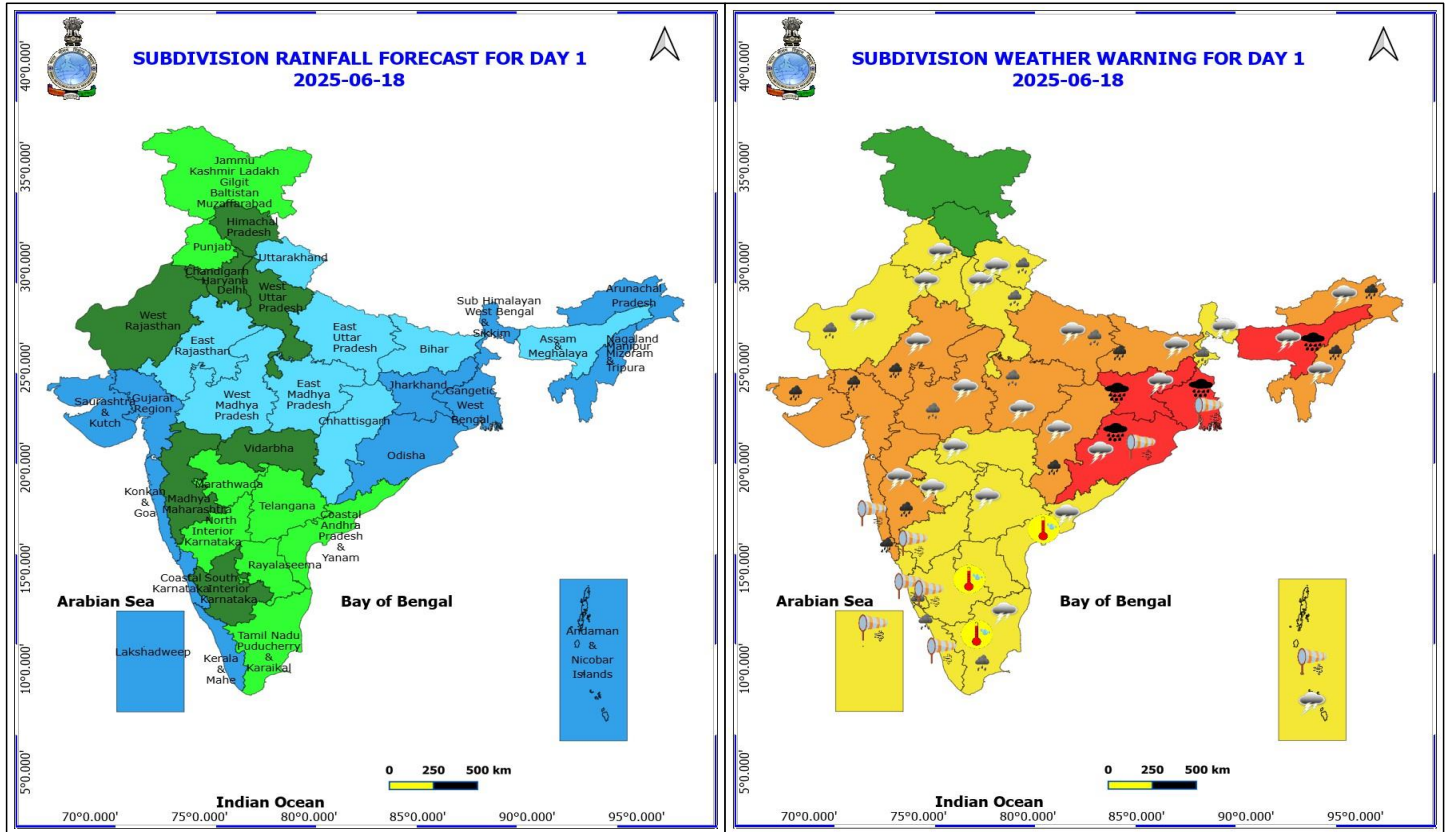
❖ **Maximum Temperature Departures (as on 17-06-2025): markedly above normal(> 5.1°C)** at few places over Arunachal Pradesh; at isolated places over Jammu-KashmirLadakh-Gilgit-Baltistan-Muzaffarabad. **appreciably above normal(3.1°C to 5.0°C)** at isolated places over Assam & Meghalaya, Odisha, West Uttar Pradesh and Tamil Nadu, Puducherry & Karaikal. **above normal(1.6°C to 3.0°C)** at few places over Bihar; at isolated places over Nagaland, Manipur, Mizoram & Tripura, Sub Himalayan West Bengal & Sikkim, West Madhya Pradesh, Konkan & Goa, Vidarbha and Chhattisgarh. **near normal(-1.5°C to 1.5°C)** at many places over Madhya Maharashtra, Marathwada, Coastal Andhra Pradesh & Yanam and North Interior Karnataka; at most places over East Uttar Pradesh, Uttarakhand, Telangana, Rayalaseema and Lakshadweep; at few places over Andaman & Nicobar Islands, West Rajasthan, East Madhya Pradesh, Coastal Karnataka and Kerala & Mahe; at isolated places over Gangetic West Bengal and South Interior Karnataka. **The highest maximum temperature** of 42.8°C was reported at ORAI (UTTAR PRADESH).

**Meteorological Analysis (Based on 0830 hours IST)**

- Southwest Monsoon has further advanced over some more parts of North Arabian Sea, remaining parts of Gujarat, some parts of Rajasthan, some more parts of Madhya Pradesh, some parts of East Uttar Pradesh, remaining parts of Chhattisgarh and Jharkhand, and some more parts of Bihar.
- The Northern Limit of Monsoon passes through 25.0°N/60°E, 25.0°N/65°E, 25.5°N/70°E, Barmer, Jodhpur, Jaipur, Gwalior, Khajuraho, Sonbhadra, Gaya, and 30.5°N/82.5°E.
- Conditions are favourable for further advance of Southwest monsoon over remaining parts of North Arabian Sea, some more parts of Rajasthan, remaining parts of Madhya Pradesh, some more parts of Uttar Pradesh and remaining parts of Bihar, some parts of Uttarakhand, Himachal Pradesh, Jammu-Kashmir-Ladakh-Gilgit-Baltistan-Muzaffarabad during next 2-3 days.
- The **well marked low pressure area** over Gangetic West Bengal & neighbourhood persists at 0830 hrs IST of today, the 18<sup>th</sup> June 2025. The associated upper air cyclonic circulation extending upto 7.6 km above mean sea level tilting southwards with height also persists. It is likely to move slowly northwestwards across Jharkhand during next 24 hours.
- The **low pressure area** over southeast Rajasthan & neighbourhood lay over central parts of Rajasthan at 0830 hrs IST of today, the 18<sup>th</sup> June 2025. The associated upper air cyclonic circulation extends upto 5.8 km above mean sea level tilting southwards with height.
- A **trough** runs from Punjab to north Gujarat Region across the above cyclonic circulation over central parts of Rajasthan between 3.1 & 5.8 km above mean sea level.
- The **Western Disturbance** lay as cyclonic circulation over Punjab & neighbourhood between 3.1 and 4.6 km above mean sea level. However the trough aloft in middle tropospheric westerlies with its axis at 5.8 km above mean sea level roughly along Long. 72°E to the north of Lat. 30°N persists.
- An **upper air** cyclonic circulation lies over central parts of Uttar Pradesh & neighbourhood between 3.1 & 5.8 km above mean sea level.
- The **trough** from the cyclonic circulation over southeast Rajasthan & neighbourhood to Jharkhand has become less marked.
- The **upper air cyclonic circulation** over northeast Assam & neighbourhood extending upto 1.5 km above mean sea level has become less marked.







## 18 June (Day 1)

- ❖ **Heavy to Very Heavy Rainfall with isolated Extremely Heavy Rainfall** very likely at isolated places over Meghalaya, Gangetic West Bengal, Jharkhand and Odisha.
- ❖ **Heavy to Very Heavy Rainfall** very likely at isolated places over Arunachal Pradesh, Bihar, Chhattisgarh, East Rajasthan, Gujarat State, Konkan & Goa, Madhya Maharashtra and Nagaland, Manipur, Mizoram and Tripura.
- ❖ **Heavy Rainfall** very likely at isolated places over Costal Karnataka, Kerala & Mahe, Madhya Pradesh, Sub Himalayan West Bengal & Sikkim, Tamil Nadu Puducherry & Karaikal, Uttar Pradesh, Uttarakhand and West Rajasthan.
- ❖ **Thundersquall with wind speed reaching(50-60kmph)** very likely at isolated places over Madhya Pradesh.
- ❖ **Thunderstorm accompanied with lightning & gusty winds(40-50kmph)** very likely at isolated places over Andaman & Nicobar Islands, Bihar, Coastal Andhra Pradesh, Nagaland, Manipur, Mizoram and Tripura, Rajasthan, Uttar Pradesh and Uttarakhand.
- ❖ **Thunderstorm accompanied with lightning & gusty winds(30-40kmph)** very likely at isolated places over Assam & Meghalaya, Haryana, Chandigarh & Delhi, Jharkhand, Odisha, Punjab, Sub Himalayan West Bengal & Sikkim, Telangana and Vidarbha.
- ❖ **Thunderstorm accompanied with Lightning** very likely at isolated places over Arunachal Pradesh, Chhattisgarh, Madhya Maharashtra, Marathwada and Tamil Nadu Puducherry & Karaikal.
- ❖ **Strong Surface Winds** very likely at isolated places over Andaman & Nicobar Islands, Costal Karnataka, Gangetic West Bengal, Interior Karnataka, Kerala & Mahe, Konkan & Goa, Lakshadweep and Odisha.

\*Red color warning does not mean "Red Alert" Red color warning means "Take Action"

Forecast and warning for any day is valid from 0830 hours IST of day till 0830 hours IST of next day

For more details kindly visit <https://mausam.imd.gov.in> or contact 011-2434-4599

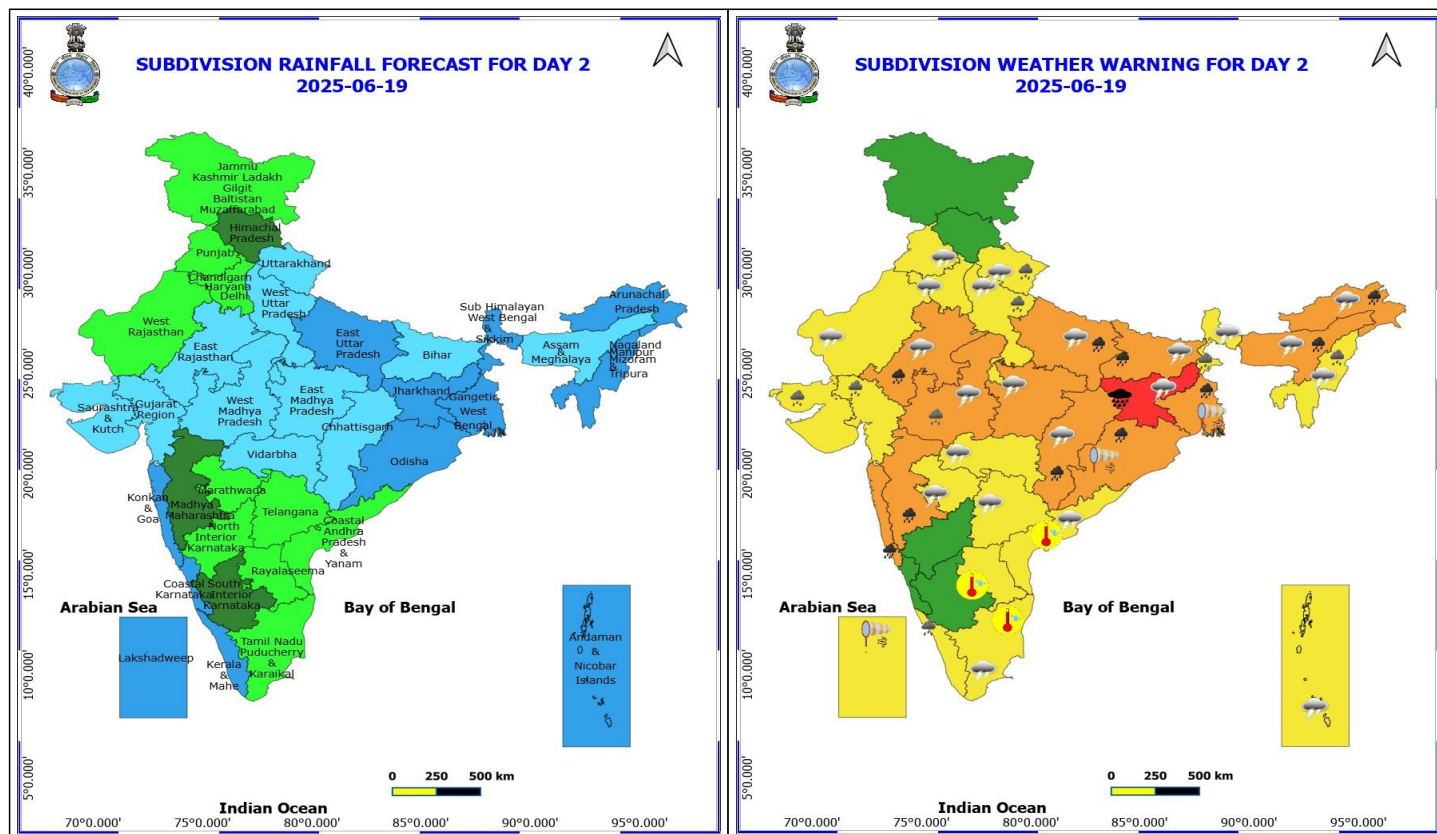
(Service to the nation since 1875)



❖ **Hot and Humid weather** very likely at isolated places over Andhra Pradesh and Tamil Nadu Puducherry & Karaikal.

❖ Squally wind with speed 45 kmph to 55 kmph gusting to 65 kmph likely to prevail along and off Somalia, Oman & adjoining Yemen coasts, along and off Gujarat coast, most parts of westcentral Arabian Sea & adjoining southwest Arabian Sea, many parts of eastcentral Arabian Sea. Squally weather with wind speed 40 - 50 kmph gusting to 60 kmph likely to prevail along and off south Konkan, Goa, Karnataka, Kerala, Andhra Pradesh, Odisha, West Bengal coasts, over southeast Arabian Sea, most parts of southwest Arabian Sea, over many parts of northeast Arabian Sea, over Lakshadweep, Maldives, Comorin areas, Gulf of Mannar, over central Bay of Bengal, over north Bay of Bengal, and over north Andaman Sea. Squally weather with wind speed 45 - 55 kmph gusting to 65 kmph likely to prevail along and off Gujarat, north Konkan coasts, southern parts of northeast Arabian Sea, many parts of eastcentral & adjoining parts of westcentral Arabian Sea, along and off Andhra Pradesh, Odisha, West Bengal coasts and adjoining, some parts of sea areas.





## 19 June (Day 2)

- ❖ **Heavy to Very Heavy Rainfall with isolated Extremely Heavy Rainfall** very likely at isolated places over Jharkhand.
- ❖ **Heavy to Very Heavy Rainfall** very likely at isolated places over Arunachal Pradesh, Assam & Meghalaya, Bihar, Chhattisgarh, East Rajasthan, East Uttar Pradesh, Gangetic West Bengal, Konkan & Goa, Madhya Maharashtra and Odisha.
- ❖ **Heavy Rainfall** very likely at isolated places over Gujarat State, Kerala & Mahe, Nagaland, Manipur, Mizoram and Tripura, Sub Himalayan West Bengal & Sikkim, Uttarakhand, West Madhya Pradesh and West Uttar Pradesh.
- ❖ **Thundersquall with wind speed reaching(50-60kmph)** very likely at isolated places over Madhya Pradesh.
- ❖ **Thunderstorm accompanied with lightning & gusty winds(40-50kmph)** very likely at isolated places over Andaman & Nicobar Islands, Bihar, Coastal Andhra Pradesh, Rajasthan, Uttar Pradesh and Uttarakhand.
- ❖ **Thunderstorm accompanied with lightning & gusty winds(30-40kmph)** very likely at isolated places over Haryana, Chandigarh & Delhi, Jharkhand, Nagaland, Manipur, Mizoram and Tripura, Punjab, Sub Himalayan West Bengal & Sikkim and Telangana.
- ❖ **Thunderstorm accompanied with Lightning** very likely at isolated places over Arunachal Pradesh, Assam & Meghalaya, Chhattisgarh, Marathwada, Tamil Nadu Puducherry & Karaikal and Vidarbha.
- ❖ **Strong Surface Winds** very likely at isolated places over Gangetic West Bengal, Lakshadweep and Odisha.
- ❖ **Hot and Humid weather** very likely at isolated places over Andhra Pradesh and Tamil Nadu Puducherry & Karaikal.

**\*Red color warning does not mean "Red Alert" Red color warning means "Take Action"**

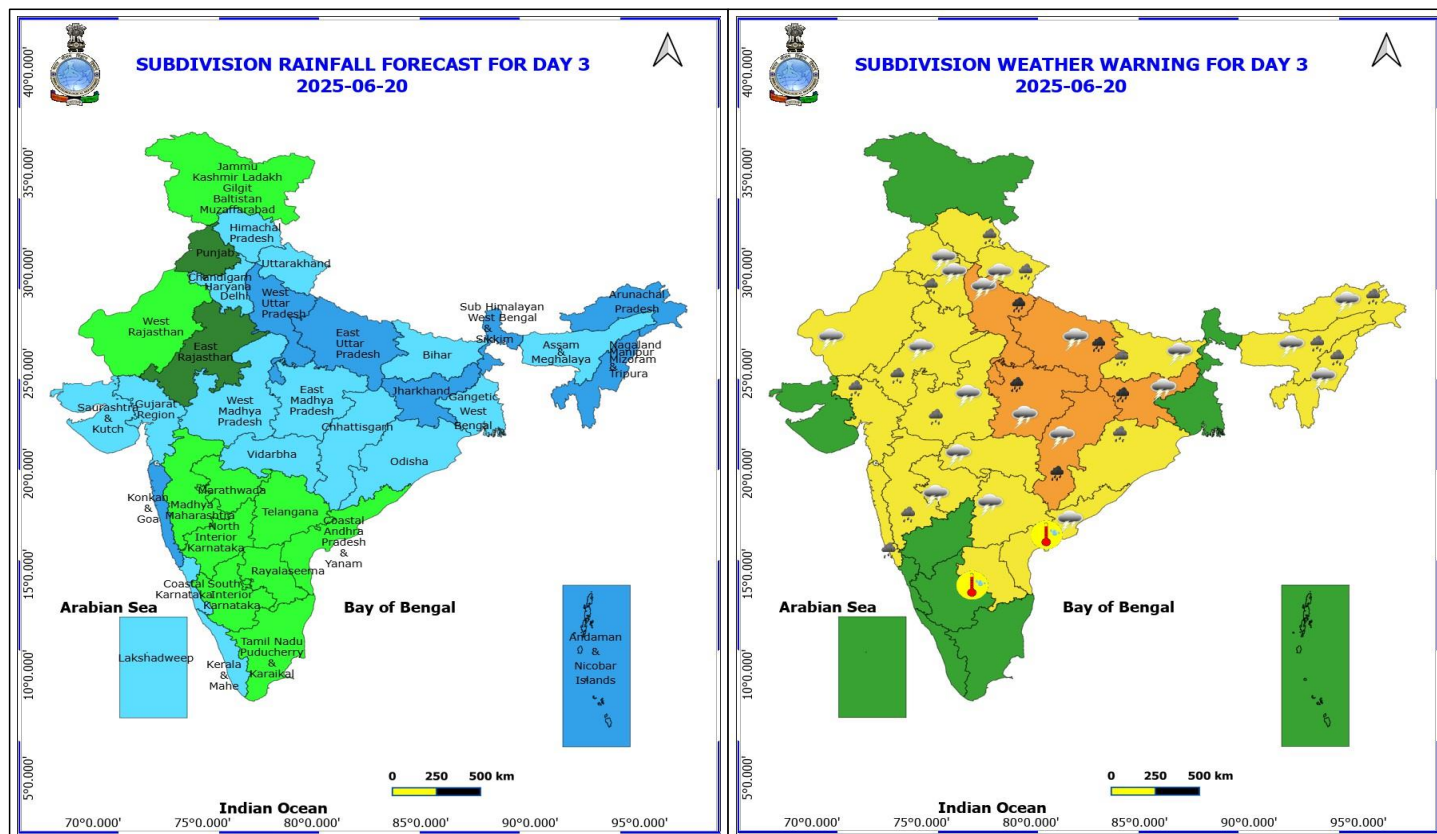
**Forecast and warning for any day is valid from 0830 hours IST of day till 0830 hours IST of next day**

**For more details kindly visit <https://mausam.imd.gov.in> or contact 011-2434-4599**

**(Service to the nation since 1875)**



❖ Squally wind with speed 45 kmph to 55 kmph gusting to 65 kmph likely to prevail along and off Somalia coast, along and off Oman & adjoining Yemen coasts, most parts of westcentral Arabian Sea & adjoining, some parts of eastcentral Arabian Sea, northern parts of southwest Arabian Sea, many parts of northwest Arabian Sea, adjoining northeast Arabian Sea. Squally weather with wind speed 40 - 50 kmph gusting to 60 kmph likely to prevail along and off north Gujarat, Konkan, Goa, Karnataka, Andhra Pradesh, Odisha, West Bengal coasts, over northern parts of southwest Arabian Sea and adjoining parts of southeast Arabian Sea, most parts of central and northeast Arabian Sea, over most parts of central and north Bay of Bengal. Squally weather with wind speed 45 - 55 kmph gusting to 65 kmph likely to prevail over many parts of eastcentral Arabian Sea & adjoining, some parts of westcentral Arabian Sea, along and off north Andhra Pradesh coast and adjoining westcentral Bay of Bengal.



## 20 June (Day 3)

- ❖ **Heavy to Very Heavy Rainfall** very likely at isolated places over Chhattisgarh, East Madhya Pradesh, Jharkhand and Uttar Pradesh.
- ❖ **Heavy Rainfall** very likely at isolated places over Arunachal Pradesh, Assam & Meghalaya, Bihar, East Rajasthan, Gujarat Region, Haryana, Chandigarh & Delhi, Himachal Pradesh, Konkan & Goa, Madhya Maharashtra, Nagaland, Manipur, Mizoram and Tripura, Odisha, Uttarakhand and West Madhya Pradesh.
- ❖ **Thundersquall with wind speed reaching(50-60kmph)** very likely at isolated places over East Madhya Pradesh.
- ❖ **Thunderstorm accompanied with lightning & gusty winds(40-50kmph)** very likely at isolated places over Bihar, Coastal Andhra Pradesh, Rajasthan, Uttar Pradesh, Uttarakhand and West Madhya Pradesh.
- ❖ **Thunderstorm accompanied with lightning & gusty winds(30-40kmph)** very likely at isolated places over Haryana, Chandigarh & Delhi, Nagaland, Manipur, Mizoram and Tripura, Punjab and Telangana.
- ❖ **Thunderstorm accompanied with Lightning** very likely at isolated places over Arunachal Pradesh, Assam & Meghalaya, Chhattisgarh, Jharkhand, Marathwada and Vidarbha.
- ❖ **Hot and Humid weather** very likely at isolated places over Andhra Pradesh.
- ❖ Squally wind with speed 45 kmph to 55 kmph gusting to 65 kmph likely to prevail along and off Somalia coast, along and off Oman & adjoining Yemen coasts, most parts of westcentral Arabian Sea & adjoining, some parts of eastcentral Arabian Sea. Squally weather with wind speed 40 - 50 kmph gusting to 60 kmph likely to prevail along and off Gujarat, Konkan coasts, over most parts of eastcentral Arabian Sea and adjoining areas, over many parts of central Bay of Bengal. Squally weather with wind speed 45 - 55 kmph gusting to 65 kmph likely to prevail over western parts of eastcentral Arabian Sea & adjoining parts of westcentral Arabian Sea, along and off north Andhra

**\*Red color warning does not mean "Red Alert" Red color warning means "Take Action"**

Forecast and warning for any day is valid from 0830 hours IST of day till 0830 hours IST of next day

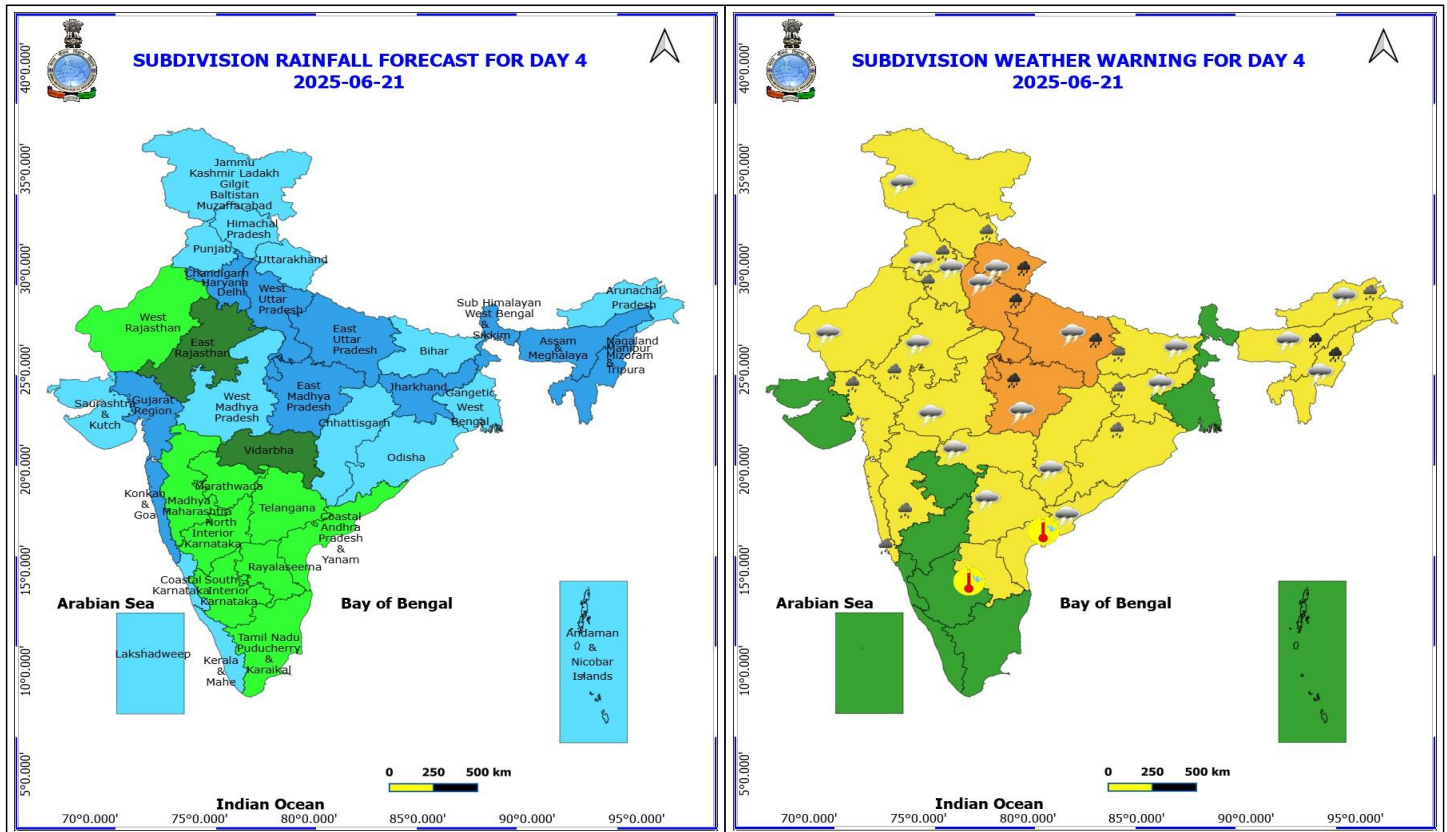
For more details kindly visit <https://mausam.imd.gov.in> or contact 011-2434-4599

(Service to the nation since 1875)



Pradesh coast and adjoining parts of westcentral Bay of Bengal.





## 21 June (Day 4)

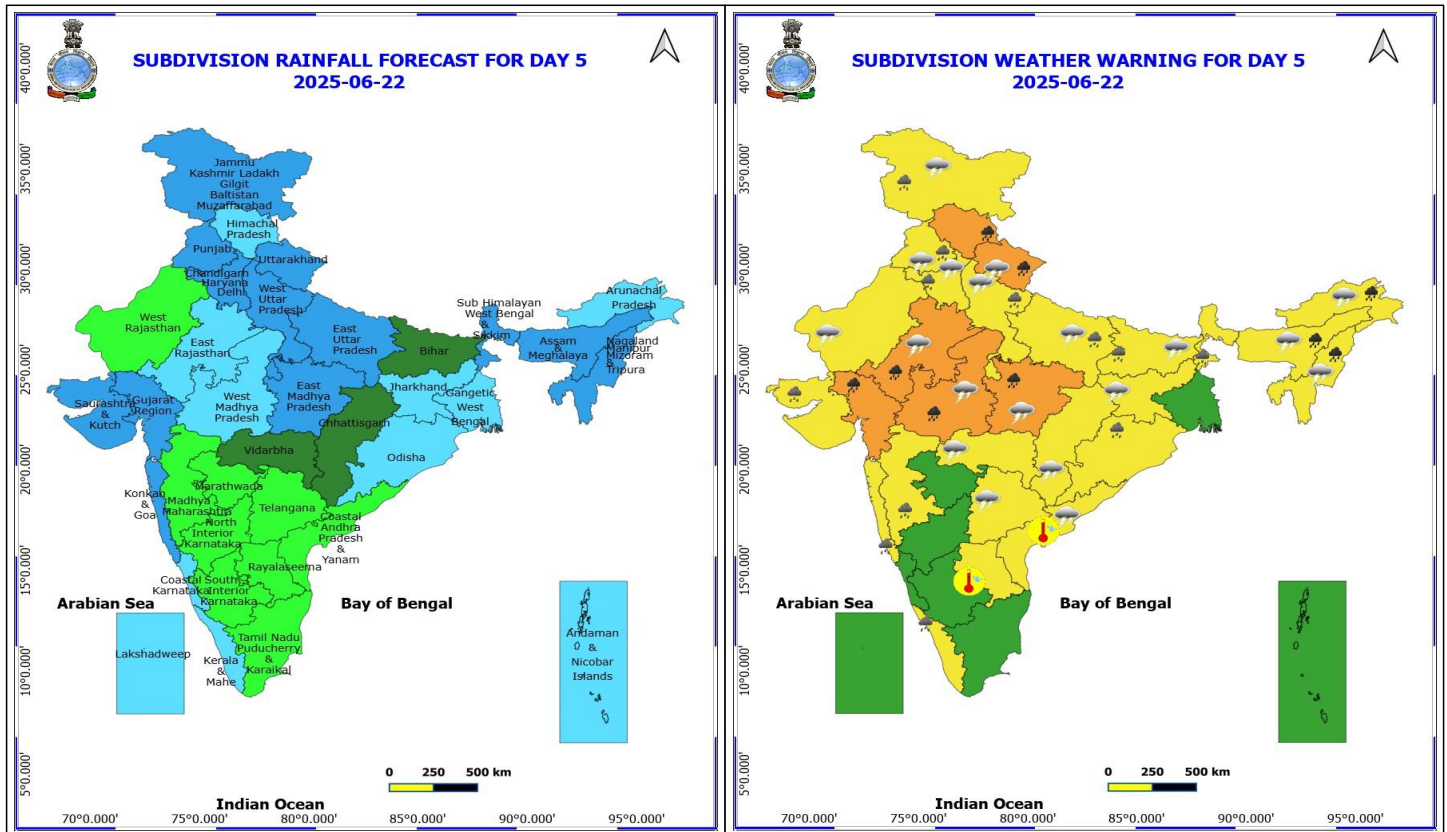
- ❖ **Heavy to Very Heavy Rainfall** likely at isolated places over Assam & Meghalaya, East Madhya Pradesh, Nagaland, Manipur, Mizoram and Tripura, Uttar Pradesh and Uttarakhand.
- ❖ **Heavy Rainfall** likely at isolated places over Arunachal Pradesh, Bihar, East Rajasthan, Gujarat Region, Haryana, Chandigarh & Delhi, Himachal Pradesh, Jharkhand, Konkan & Goa, Madhya Maharashtra, Odisha and Punjab.
- ❖ **Thunderstorm accompanied with lightning & gusty winds(40-50kmph)** likely at isolated places over Bihar, Coastal Andhra Pradesh, Madhya Pradesh, Rajasthan, Uttar Pradesh and Uttarakhand.
- ❖ **Thunderstorm accompanied with lightning & gusty winds(30-40kmph)** likely at isolated places over Jammu-Kashmir-Ladakh-Gilgit-Baltistan-Muzaffarabad and Telangana.
- ❖ **Thunderstorm accompanied with Lightning** likely at isolated places over Arunachal Pradesh, Assam & Meghalaya, Chhattisgarh, Haryana, Chandigarh & Delhi, Jharkhand, Nagaland, Manipur, Mizoram and Tripura, Punjab and Vidarbha.
- ❖ **Hot and Humid weather** likely at isolated places over Andhra Pradesh.
- ❖ Squally wind with speed 45 kmph to 55 kmph gusting to 65 kmph likely to prevail along and off Somalia coast, along and off Oman & adjoining Yemen coasts, most parts of westcentral Arabian Sea & adjoining, some parts of eastcentral Arabian Sea, southern parts of northwest Arabian Sea and adjoining northeast Arabian Sea. Squally weather with wind speed 40 - 50 kmph gusting to 60 kmph likely to prevail along and off Gujarat coasts, over most parts of eastcentral Arabian Sea, over most parts of northeast Arabian Sea, along and off north Andhra Pradesh coast and adjoining parts of westcentral Bay of Bengal. Squally weather with wind speed 45 - 55 kmph gusting to 65 kmph likely to prevail over western parts of eastcentral Arabian Sea & adjoining parts of westcentral Arabian Sea.

**\*Red color warning does not mean "Red Alert" Red color warning means "Take Action"**

**Forecast and warning for any day is valid from 0830 hours IST of day till 0830 hours IST of next day**

**For more details kindly visit <https://mausam.imd.gov.in> or contact 011-2434-4599**

**(Service to the nation since 1875)**



## 22 June (Day 5)

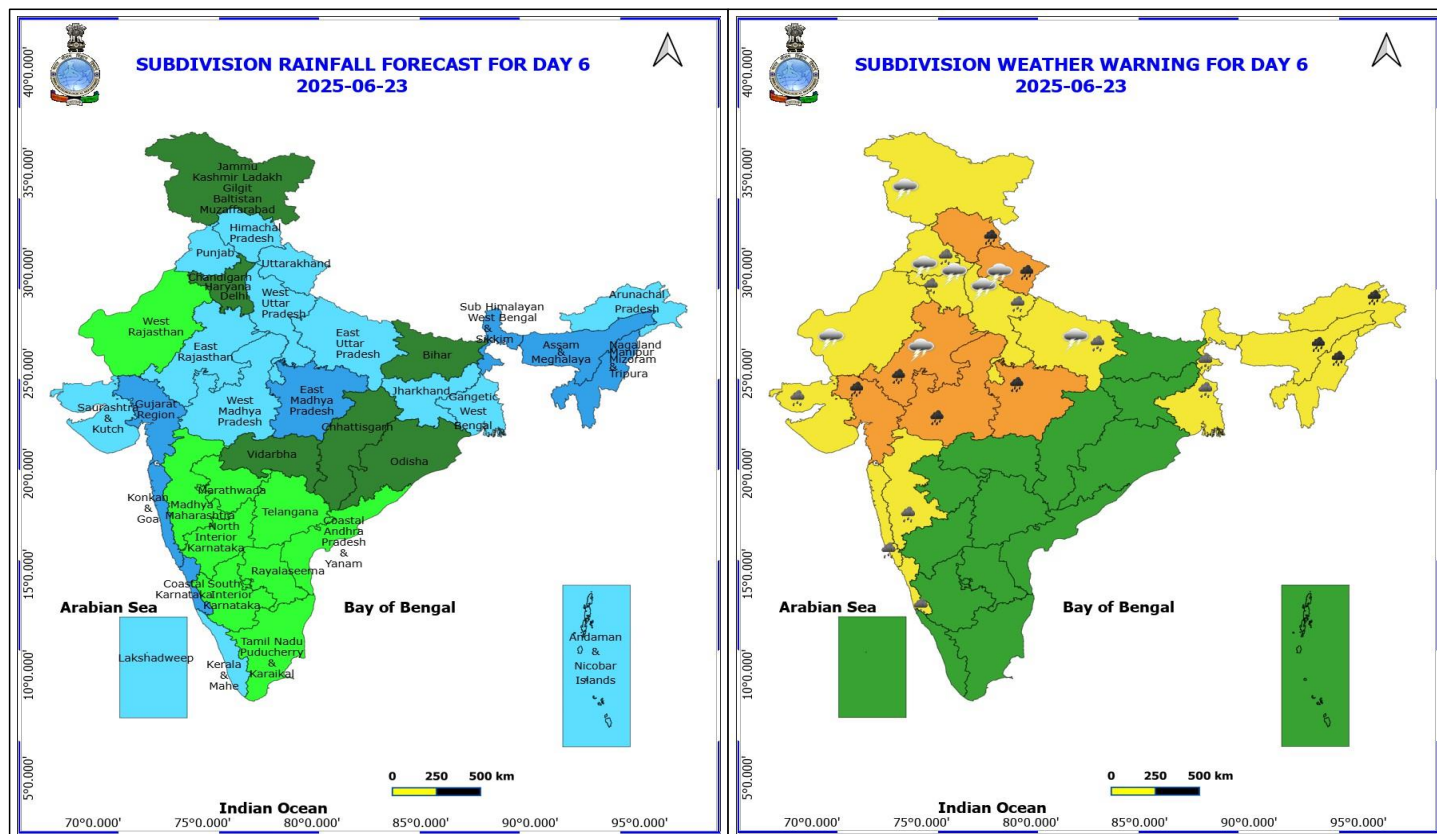
- ❖ **Heavy to Very Heavy Rainfall** likely at isolated places over Arunachal Pradesh, Assam & Meghalaya, East Rajasthan, Gujarat Region, Himachal Pradesh, Madhya Pradesh, Nagaland, Manipur, Mizoram and Tripura and Uttarakhand.
- ❖ **Heavy Rainfall** likely at isolated places over Bihar, Haryana, Chandigarh & Delhi, Jammu-Kashmir-Ladakh-Gilgit-Baltistan-Muzaffarabad, Kerala & Mahe, Konkan & Goa, Madhya Maharashtra, Odisha, Punjab, Saurashtra & Kutch, Sub Himalayan West Bengal & Sikkim and Uttar Pradesh.
- ❖ **Thunderstorm accompanied with lightning & gusty winds(40-50kmph)** likely at isolated places over Bihar, Coastal Andhra Pradesh, Madhya Pradesh, Rajasthan, Uttar Pradesh and Uttarakhand.
- ❖ **Thunderstorm accompanied with lightning & gusty winds(30-40kmph)** likely at isolated places over Jammu-Kashmir-Ladakh-Gilgit-Baltistan-Muzaffarabad and Telangana.
- ❖ **Thunderstorm accompanied with Lightning** likely at isolated places over Arunachal Pradesh, Assam & Meghalaya, Chhattisgarh, Haryana, Chandigarh & Delhi, Jharkhand, Nagaland, Manipur, Mizoram and Tripura, Punjab and Vidarbha.
- ❖ **Hot and Humid weather** likely at isolated places over Andhra Pradesh.
- ❖ Squally wind with speed 45 kmph to 55 kmph gusting to 65 kmph likely to prevail along and off Somalia coast, along and off Oman & adjoining Yemen coasts, most parts of westcentral Arabian Sea & adjoining, some parts of eastcentral Arabian Sea, southern parts of northwest Arabian Sea and adjoining northeast Arabian Sea. Squally weather with wind speed 40 - 50 kmph gusting to 60 kmph likely to prevail over most parts of central Bay of Bengal, many parts of southwest Bay of Bengal.

**\*Red color warning does not mean "Red Alert" Red color warning means "Take Action"**

Forecast and warning for any day is valid from 0830 hours IST of day till 0830 hours IST of next day

For more details kindly visit <https://mausam.imd.gov.in> or contact 011-2434-4599

(Service to the nation since 1875)



## 23 June (Day 6)

- ❖ **Heavy to Very Heavy Rainfall** likely at isolated places over Arunachal Pradesh, Assam & Meghalaya, East Rajasthan, Gujarat Region, Himachal Pradesh, Madhya Pradesh, Nagaland, Manipur, Mizoram and Tripura and Uttarakhand.
- ❖ **Heavy Rainfall** likely at isolated places over Costal Karnataka, Haryana, Chandigarh & Delhi, Konkan & Goa, Madhya Maharashtra, Punjab, Saurashtra & Kutch, Uttar Pradesh and West Bengal & Sikkim.
- ❖ **Thunderstorm accompanied with lightning & gusty winds(40-50kmph)** likely at isolated places over Rajasthan, Uttar Pradesh and Uttarakhand.
- ❖ **Thunderstorm accompanied with lightning & gusty winds(30-40kmph)** likely at isolated places over Jammu-Kashmir-Ladakh-Gilgit-Baltistan-Muzaffarabad.
- ❖ **Thunderstorm accompanied with Lightning** likely at isolated places over Haryana, Chandigarh & Delhi and Punjab.

**No Fishermen Warning**

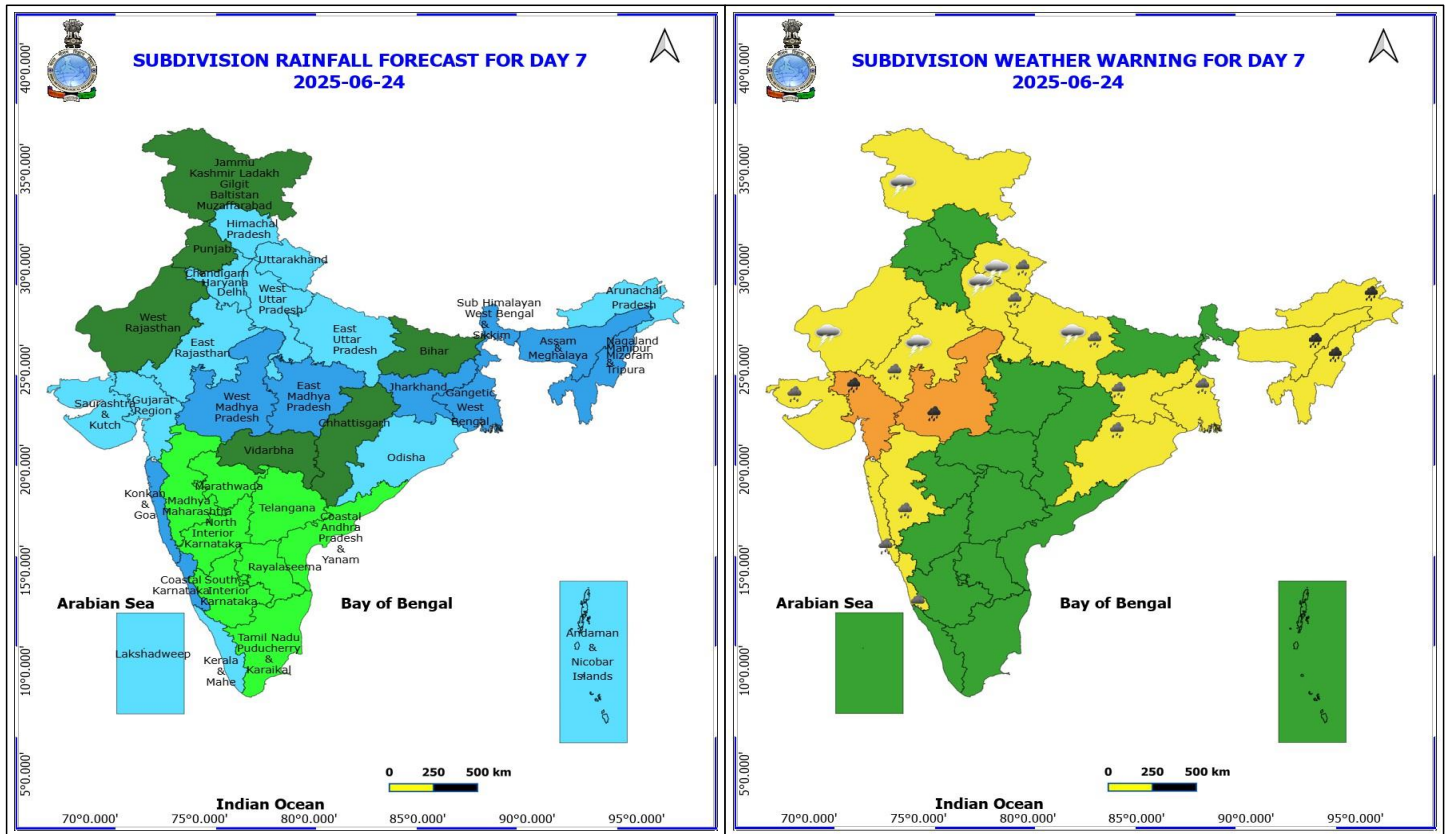
**\*Red color warning does not mean "Red Alert" Red color warning means "Take Action"**

Forecast and warning for any day is valid from 0830 hours IST of day till 0830 hours IST of next day

For more details kindly visit <https://mausam.imd.gov.in> or contact 011-2434-4599

(Service to the nation since 1875)





## 24 June (Day 7)

- ❖ **Heavy to Very Heavy Rainfall** likely at isolated places over Arunachal Pradesh, Assam & Meghalaya, East Rajasthan, Gujarat Region, Himachal Pradesh, Madhya Pradesh, Nagaland, Manipur, Mizoram and Tripura and Uttarakhand.
- ❖ **Heavy Rainfall** likely at isolated places over Bihar, Haryana, Chandigarh & Delhi, Jammu-Kashmir-Ladakh-Gilgit-Baltistan-Muzaffarabad, Kerala & Mahe, Konkan & Goa, Madhya Maharashtra, Odisha, Punjab, Saurashtra & Kutch, Sub Himalayan West Bengal & Sikkim and Uttar Pradesh.
- ❖ **Thunderstorm accompanied with lightning & gusty winds(40-50kmph)** likely at isolated places over Bihar, Coastal Andhra Pradesh, Madhya Pradesh, Rajasthan, Uttar Pradesh and Uttarakhand.
- ❖ **Thunderstorm accompanied with lightning & gusty winds(30-40kmph)** likely at isolated places over Jammu-Kashmir-Ladakh-Gilgit-Baltistan-Muzaffarabad and Telangana.
- ❖ **Thunderstorm accompanied with Lightning** likely at isolated places over Arunachal Pradesh, Assam & Meghalaya, Chhattisgarh, Haryana, Chandigarh & Delhi, Jharkhand, Nagaland, Manipur, Mizoram and Tripura, Punjab and Vidarbha.
- ❖ **Hot and Humid weather** likely at isolated places over Andhra Pradesh.

**No Fishermen Warning**

\*Red color warning does not mean "Red Alert" Red color warning means "Take Action"

Forecast and warning for any day is valid from 0830 hours IST of day till 0830 hours IST of next day

For more details kindly visit <https://mausam.imd.gov.in> or contact 011-2434-4599

(Service to the nation since 1875)





**Table-1**

## 7 Days Rainfall Forecast

S.No.	Subdivision	18-Jun	19-Jun	20-Jun	21-Jun	22-Jun	23-Jun	24-Jun
		Day 1	Day 2	Day 3	Day 4	Day 5	Day 6	Day 7
1	ANDAMAN & NICOBAR ISLANDS	WS	WS	WS	FWS	FWS	FWS	FWS
2	ARUNACHAL PRADESH	WS	WS	WS	FWS	FWS	FWS	FWS
3	ASSAM & MEHGHALAYA	FWS	FWS	FWS	WS	WS	WS	WS
4	N. M. M. & T.	WS	WS	WS	WS	WS	WS	WS
5	S.H. WEST BENGAL & SIKKIM	WS	WS	WS	WS	WS	WS	WS
6	GANGETIC WEST BENGAL	WS	WS	FWS	FWS	FWS	FWS	WS
7	ODISHA	WS	WS	FWS	FWS	FWS	SCT	FWS
8	JHARKHAND	WS	WS	WS	WS	FWS	FWS	WS
9	BIHAR	FWS	FWS	FWS	FWS	SCT	SCT	SCT
10	EAST UTTAR PRADESH	FWS	WS	WS	WS	WS	FWS	FWS
11	WEST UTTAR PRADESH	SCT	FWS	WS	WS	WS	FWS	FWS
12	UTTARAKHAND	FWS	FWS	FWS	FWS	WS	FWS	FWS
13	HARYANA, CHD & DELHI	SCT	ISOL	FWS	WS	WS	SCT	FWS
14	PUNJAB	ISOL	ISOL	SCT	FWS	WS	FWS	SCT
15	HIMACHAL PRADESH	SCT	SCT	FWS	FWS	FWS	FWS	FWS
16	JAMMU AND KASHMIR AND LADAKH	ISOL	ISOL	ISOL	FWS	WS	SCT	SCT
17	WEST RAJASTHAN	SCT	ISOL	ISOL	ISOL	ISOL	ISOL	SCT
18	EAST RAJASTHAN	FWS	FWS	SCT	SCT	FWS	FWS	FWS
19	WEST MADHYA PRADESH	FWS	FWS	FWS	FWS	FWS	FWS	WS
20	EAST MADHYA PRADESH	FWS	FWS	FWS	WS	WS	WS	WS
21	GUJRAT REGION	WS	FWS	FWS	WS	WS	WS	FWS
22	SAURASHTRA & KUTCH	WS	FWS	FWS	FWS	WS	FWS	FWS
23	KONKAN & GOA	WS	WS	WS	WS	WS	WS	WS
24	MADHYA MAHARASHTRA	FWS	SCT	ISOL	ISOL	ISOL	ISOL	ISOL
25	MARATHWADA	ISOL	ISOL	ISOL	ISOL	ISOL	ISOL	ISOL
26	VIDARBHA	SCT	FWS	FWS	SCT	SCT	SCT	SCT
27	CHATTISGARH	FWS	FWS	FWS	FWS	SCT	SCT	SCT
28	COASTAL ANDHRA PRADESH	ISOL	ISOL	ISOL	ISOL	ISOL	ISOL	ISOL
29	TELANGANA	ISOL	ISOL	ISOL	ISOL	ISOL	ISOL	ISOL
30	RAYALASEEMA	ISOL	ISOL	ISOL	ISOL	ISOL	ISOL	ISOL
31	TAMILNADU & PUDUCHERRY	ISOL	ISOL	ISOL	ISOL	ISOL	ISOL	ISOL
32	COSTAL KARNATAKA	WS	WS	FWS	FWS	FWS	WS	WS
33	NORTH INTERIOR KARNATAKA	ISOL	ISOL	ISOL	ISOL	ISOL	ISOL	ISOL
34	SOUTH INTERIOR KARNATAKA	SCT	SCT	ISOL	ISOL	ISOL	ISOL	ISOL
35	KERALA	WS	WS	FWS	FWS	FWS	FWS	FWS
36	LAKSHDWEEP	WS	WS	FWS	FWS	FWS	FWS	FWS

Legend	Category	%Stations
WS	Widespread/Most Places	76-100
FWS	Fairly Widespread/Many Places	51-75
SCT	Scattered/ A Few Places	26-50
ISOL	Isolated Places	1-25
DRY	No Rain	0

\*Red color warning does not mean "Red Alert" Red color warning means "Take Action"

Forecast and warning for any day is valid from 0830 hours IST of day till 0830 hours IST of next day

For more details kindly visit <https://mausam.imd.gov.in> or contact 011-2434-4599

(Service to the nation since 1875)

Fig. 1: Maximum Temperatures Dated 2025-06-18

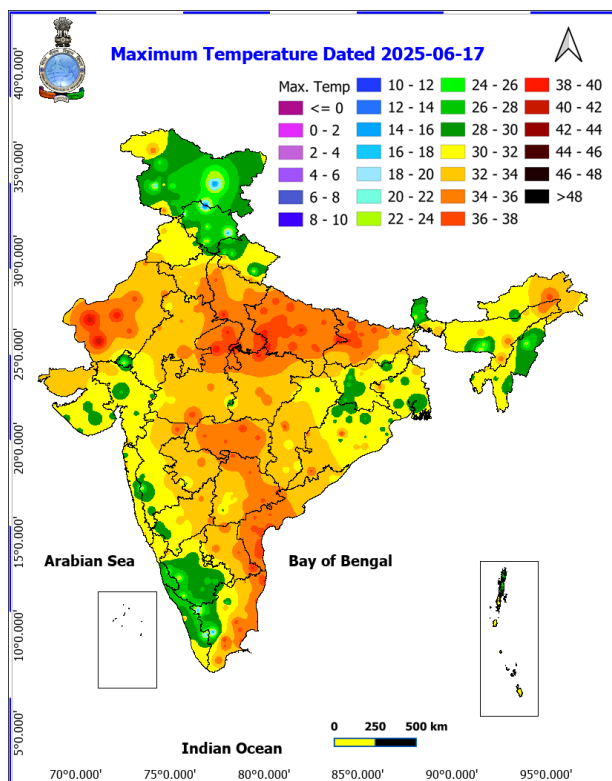


Fig. 2: Departure of Maximum Temp. Dated 2025-06-18

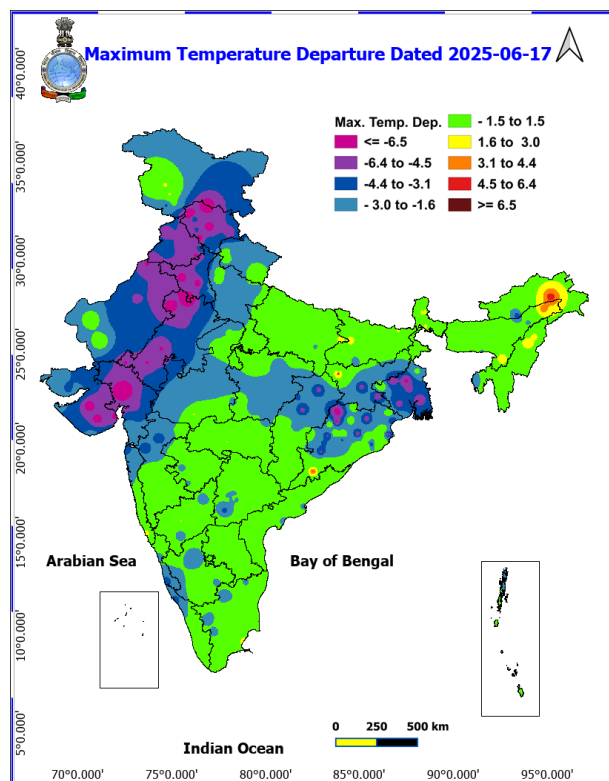


Fig. 3: Minimum Temperatures Dated 2025-06-18

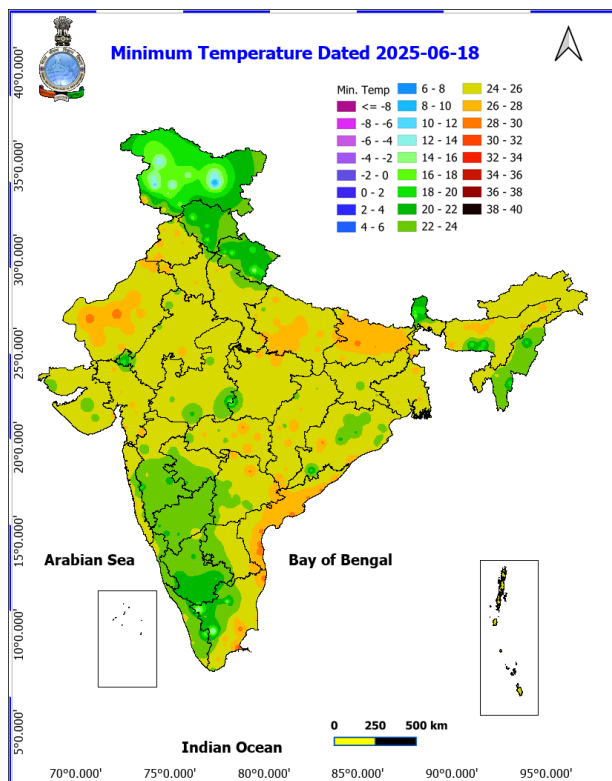
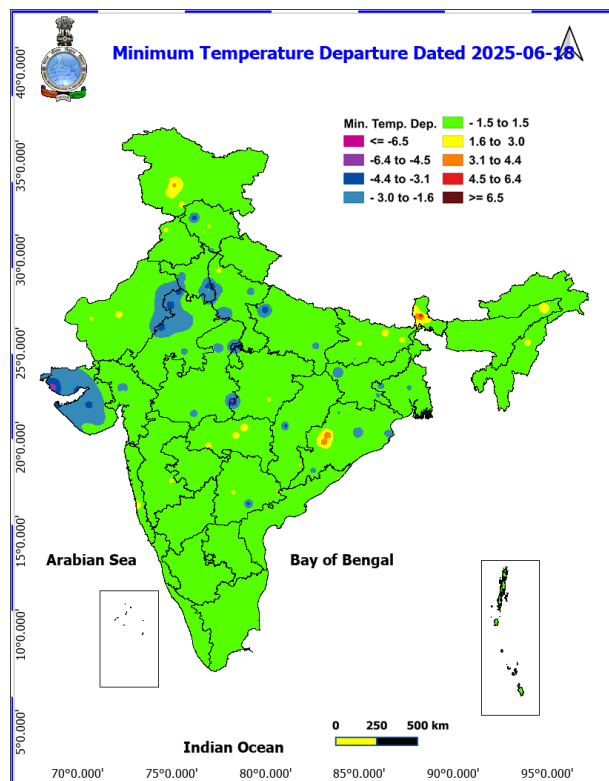
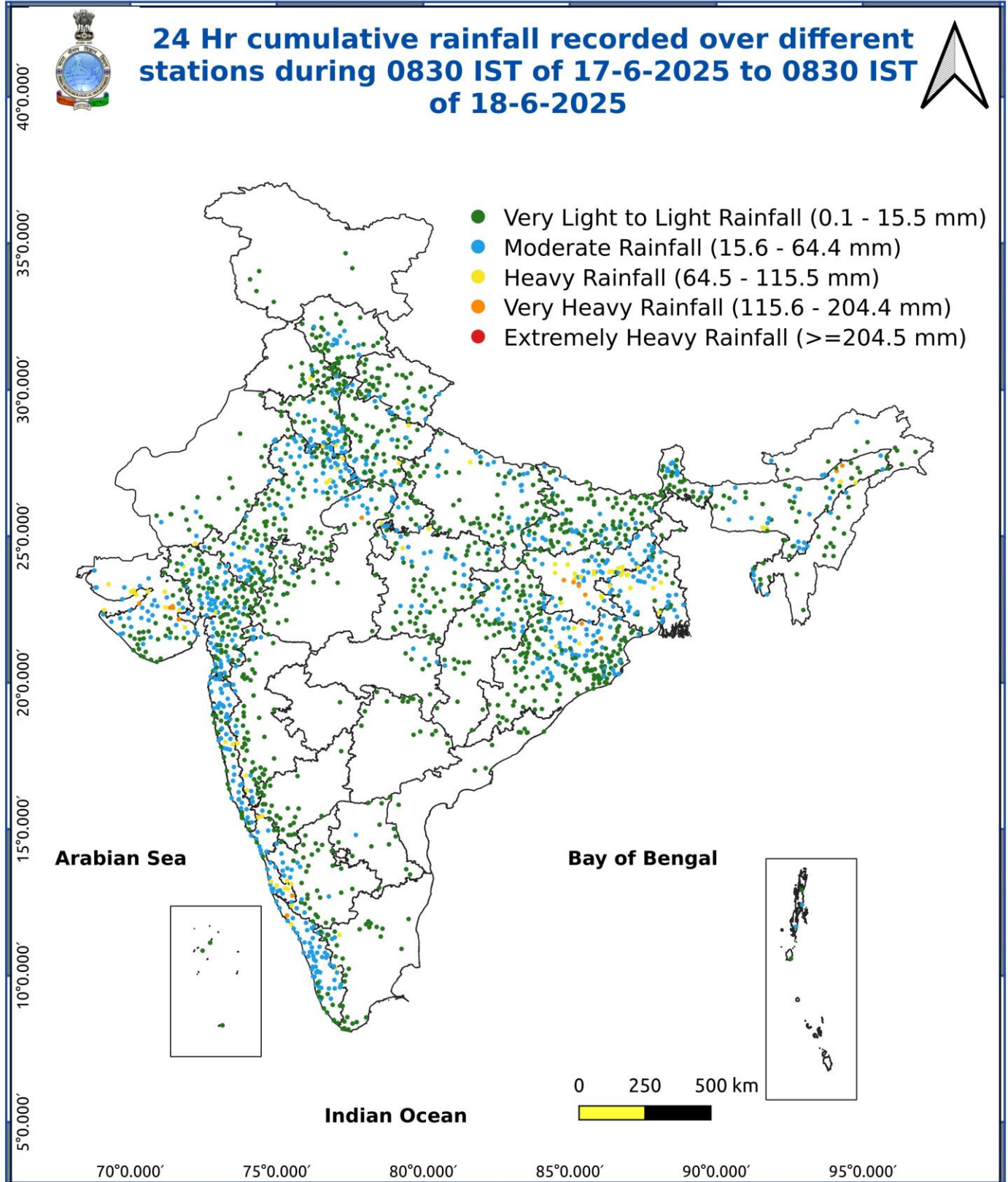


Fig. 4: Departure of Minimum Temp. Dated 2025-06-18





\*Red color warning does not mean "Red Alert" Red color warning means "Take Action"

Forecast and warning for any day is valid from 0830 hours IST of day till 0830 hours IST of next day

For more details kindly visit <https://mausam.imd.gov.in> or contact 011-2434-4599

(Service to the nation since 1875)

**Impact & Action Suggested due to extremely heavy falls/ very heavy rainfall:**

**Extremely heavy rainfall (>20 cm/24 hours) likely at isolated places over Meghalaya, Gangetic West Bengal, Odisha on 18<sup>th</sup>, Jharkhand on 18<sup>th</sup> & 19<sup>th</sup> June.**

**Heavy to very heavy rainfall** likely to continue over Northeast India during 18<sup>th</sup>-24<sup>th</sup>; Konkan & Goa, Madhya Maharashtra, East Rajasthan on 18<sup>th</sup> & 19<sup>th</sup>, Gujarat State on 18<sup>th</sup>, Chhattisgarh during 18<sup>th</sup>-20<sup>th</sup>, Madhya Pradesh, Uttar Pradesh during 20<sup>th</sup> -22<sup>nd</sup>, Uttarakhand during 21<sup>st</sup>-23<sup>rd</sup> and Himachal Pradesh on 22<sup>nd</sup> & 23<sup>rd</sup> June.

**Impact Expected**

Localized Flooding of roads, water logging in low lying areas and closure of underpasses mainly in urban areas of the above region.

Occasional reduction in visibility due to heavy rainfall.

Disruption of traffic in major cities due to water logging in roads leading to increased travel time.

Minor damage to kutcha roads.

Possibilities of damage to vulnerable structure.

Localized Landslides/Mudslides/landslips/mudslips/landsinks/mudsinks.

Damage to horticulture and standing crops in some areas due to inundation.

It may lead to riverine flooding in some river catchments (for riverine flooding please visit Web page of CWC)

**Action Suggested**

Check for traffic congestion on your route before leaving for your destination.

Follow any traffic advisories that are issued in this regard.

Avoid going to areas that face the water logging problems often.

Avoid staying in vulnerable structure.

**Impact expected and action suggested due to isolated thunderstorm with lightning/gusty & Squally winds over**

**Thundersquall (wind speed reaching 50-60 kmph gusting to 70 kmph)** at isolated places over East Uttar Pradesh on 18<sup>th</sup>, Madhya Pradesh on 18<sup>th</sup> & 19<sup>th</sup> June.

**Impact expected:**

Breaking of tree branches, uprooting of large avenue trees. Large dead limbs blown from trees. Damage to Standing

**\*Red color warning does not mean "Red Alert" Red color warning means "Take Action"**

**Forecast and warning for any day is valid from 0830 hours IST of day till 0830 hours IST of next day**

**For more details kindly visit <https://mausam.imd.gov.in> or contact 011-2434-4599**

**(Service to the nation since 1875)**



crops.

Minor to Major damage to banana and papaya trees.

Minor to major damage to power and communication lines due to breaking of branches.

Strong wind/hail may damage plantation, horticulture and standing crops.

Partial damage to vulnerable structures due to strong winds.

Minor damage to kutcha houses/walls and huts.

Loose objects may fly.

#### Action suggested:

People are advised to keep a watch on the weather for worsening conditions and be ready to move to safer places accordingly.

Stay indoors, close windows & doors and avoid travel if possible.

Take safe shelters; do not take shelter under trees.

Do not lie on concrete floors and do not lean against concrete walls.

Unplug electrical/ electronic appliances.

Immediately get out of water bodies.

Keep away from all the objects that conduct electricity.

#### Agromet advisories for various parts of the country

##### Agromet advisories for likely impact of Heavy / Heavy to Very Heavy / Extremely Heavy Rainfall

In **Gangetic West Bengal**, postpone sowing of *kharif* rice. Ensure proper drainage in already sown rice nurseries, sesame, jute and groundnut. Cover the young seedlings of *kharif* rice with plastic sheets or agro-shade nets to protect them from heavy rains. Keep the harvested produce of *Boro* rice at safer place and use tarpaulin or polythene sheets to protect harvested grain from heavy rain.

In **Sub-Himalayan West Bengal**, maintain proper drainage channels in rice nurseries and fields of jute and ginger to avoid water stagnation.

In **North Odisha**, postpone sowing of rice nursery and ensure proper drainage from already sown rice nurseries, maize and vegetables to prevent water logging. Postpone sowing of millets, maize, pulses and vegetables during heavy rain. Cover rice and vegetable nurseries with plastic sheets to prevent washing away of seeds.

**\*Red color warning does not mean "Red Alert" Red color warning means "Take Action"**

Forecast and warning for any day is valid from 0830 hours IST of day till 0830 hours IST of next day

For more details kindly visit <https://mausam.imd.gov.in> or contact 011-2434-4599

(Service to the nation since 1875)

In **Jharkhand**, make necessary arrangements to drain out excess water from rice nurseries, moong, vegetables and fruit orchards. Postpone harvesting of summer maize and keep the already harvested produce in safe place.

In **South Gujarat**, postpone sowing of soybean and rice nurseries. Ensure proper drainage facilities in already sown rice nurseries, soybean and also in banana plantations to prevent water logging. Provide support to sugarcane and banana to prevent lodging.

In **Saurashtra**, drain out excess water and ensure proper drainage facility from vegetable fields.

In **Rajasthan**, cover the harvested green gram and vegetables and store in safe place.

In **Kerala**, ensure proper drainage facilities in rice nurseries, transplanted rice fields, coconut and banana plantations to prevent water logging. Undertake propping in banana to protect the plants from heavy rains.

In **Tamil Nadu**, ensure proper drainage facilities in rice nurseries, cotton, sugarcane, groundnut and transplanted rice fields, coconut and banana plantations to prevent water logging. Provide staking or support to tender plants of cotton, young plants of sugarcane and fruit-bearing plants of banana to avoid lodging.

In **Coastal Karnataka**, postpone nursery sowing of rice. Ensure proper drainage facilities in rice nurseries, banana, coconut and arecanut plantations to prevent water logging.

In **Konkan & Goa** and **ghat areas of Madhya Maharashtra**, make arrangement to drain out excess water from rice nurseries to prevent water logging.

In **Bhabar and Tarai Zone of Uttarakhand**, ensure proper drainage in already sown crops of pigeon pea, millets and soybean.

In **Assam**, keep the harvested produce of sesame, foxtail millet, *Boro* rice, banana and citrus at safer places. Ensure proper drainage in *Sali* rice nursery, maize and sugarcane fields, arecanut and coconut plantations to prevent water logging.

In **Meghalaya**, postpone nursery sowing of rice especially in valleys. Ensure proper drainage in the fields of maize, ginger, French bean, cowpea, vegetables and around rice nurseries to prevent water logging. Provide strong bamboo stakes or trellis support to cow pea, cucumber and bottle gourd to prevent vines from trailing on wet ground. Provide support to banana plant to prevent lodging.

In **Arunachal Pradesh**, keep the harvested produce of soybean and vegetables such as chilli and okra at a safer place. Ensure proper drainage in rice nurseries, kiwi and apple orchards to avoid water logging.

**Nagaland** – Ensure proper drainage in *jhum* rice and rice nursery. Drain out excess water from orchards.

### **Livestock / Fishery**

Keep the animals inside the shed during heavy rainfall and provide them balanced feed.

Store feed and fodder in a safe place to prevent spoilage.

Construct an outlet with proper netting around the ponds to drain out excess water, thereby preventing fish from escaping in case of overflow.

### **Agromet advisories for likely impact of Thunderstorm / Gusty Winds / Squally Winds**

(Based on the IBF and advisories issued by different AMFUs)

\*Red color warning does not mean "Red Alert" Red color warning means "Take Action"

Forecast and warning for any day is valid from 0830 hours IST of day till 0830 hours IST of next day

For more details kindly visit <https://mausam.imd.gov.in> or contact 011-2434-4599

(Service to the nation since 1875)

Provide mechanical support to horticultural crops and staking or support to vegetables and young fruit plants / fruit-bearing plants to avoid lodging due to strong winds.

## **24 hours Outlook for the Flash Flood Risk (FFR) till 1130 IST of 19-06-2025 :**

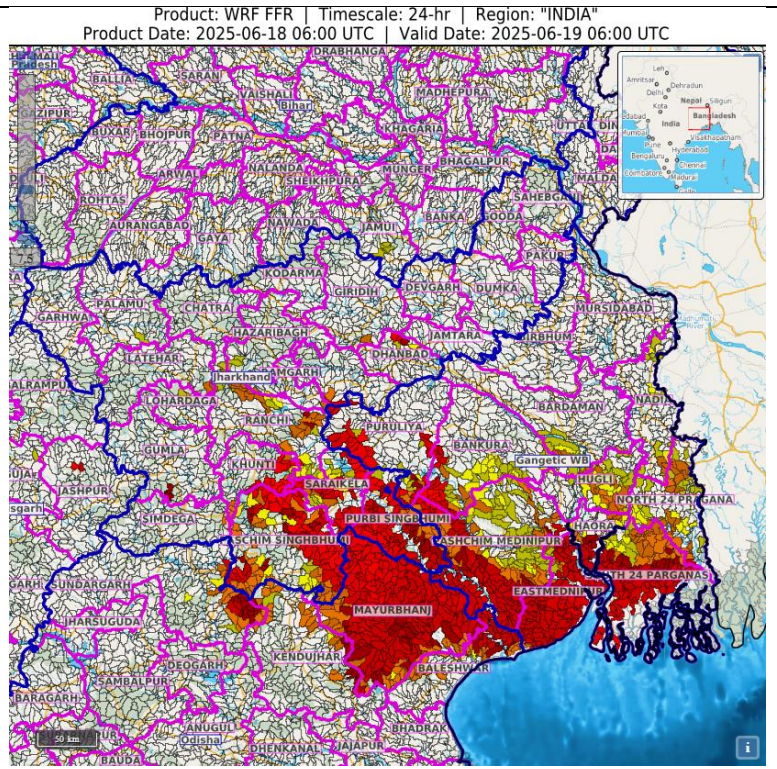
**Moderate to High flash flood risk** likely over few watersheds & neighbourhoods of following Met Sub-divisions during next 24 hours.

**Gangetic West Bengal** - Bankura, Eastmednipur, Haora, Nadia, North 24 Praganas, Pashchim Medinipur, Puruliya and South 24 Parganas districts.

**Adjoining Jharkhand** - East Singhbhum, Khunti, Saraikela, Ranchi and West Singhbhum districts.

**Adjoining Odisha** - Baleshwar, Deogarh, Kendujhar, Mayurbhanj and Sundargarh districts.

Surface runoff/ Inundation may occur at some fully saturated soils & low-lying areas over Area of Concern (AoC) as shown in map due to expected rainfall occurrence in next 24 hours.



**\*Red color warning does not mean "Red Alert" Red color warning means "Take Action"**

Forecast and warning for any day is valid from 0830 hours IST of day till 0830 hours IST of next day

For more details kindly visit <https://mausam.imd.gov.in> or contact 011-2434-4599

(Service to the nation since 1875)



**24 hours Outlook for the Flash Flood Risk (FFR) till 1130 IST of 19-06-2025 :**

**Low to Moderate flash flood risk likely over few watersheds & neighbourhoods of following Met Sub-divisions during next 24 hours.**

**Assam & Meghalaya** - Cachar, Hailakandi, N.C Hills, Karimganj, East Khasi Hills, South Garo Hills, West Khasi Hills and Jaintia Hills districts.

**Nagaland Mizoram Manipur Tripura (NMMT) –**

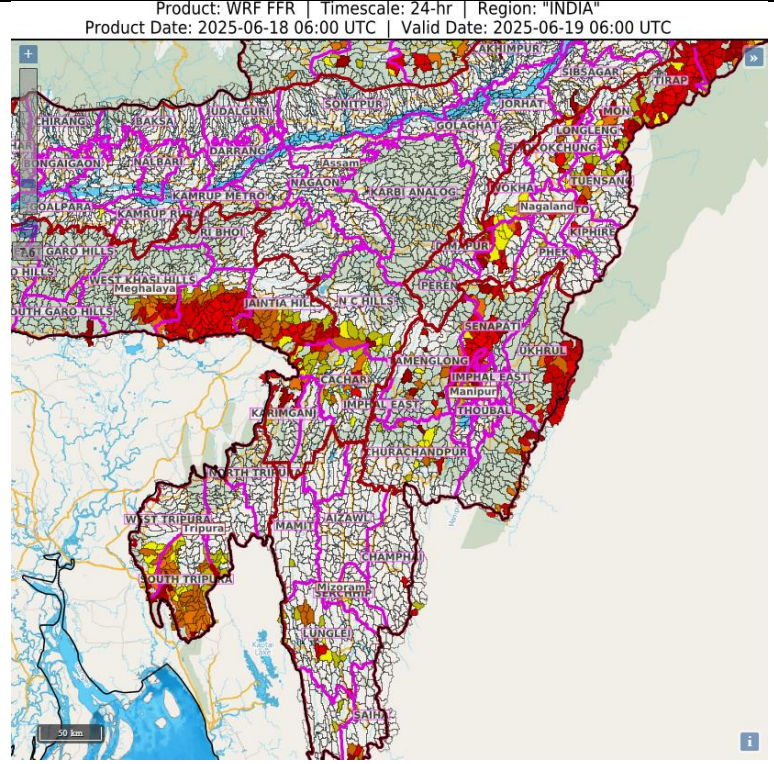
Nagaland – Dimapur, Kiphire, Kohima, Longleng, Mokokchung, Mon, Peren, Phek, Tuensang, Wokha, Zunheboto

Manipur – Chandel, Churachandpur, Imphal East, Imphal West, Senapati, Tamenglong, Ukhrul;

Mizoram – Aizawl, Lawngtlai, Lunglei, Saiha, Champhai, Serchhip;;

**Tripura** – South Tripura, West Tripura and Dhalai districts

Surface runoff/ Inundation may occur at some fully saturated soils & low-lying areas over Area of Concern (AoC) as shown in map due to expected rainfall occurrence in next 24 hours.



**\*Red color warning does not mean "Red Alert" Red color warning means "Take Action"**

**Forecast and warning for any day is valid from 0830 hours IST of day till 0830 hours IST of next day**

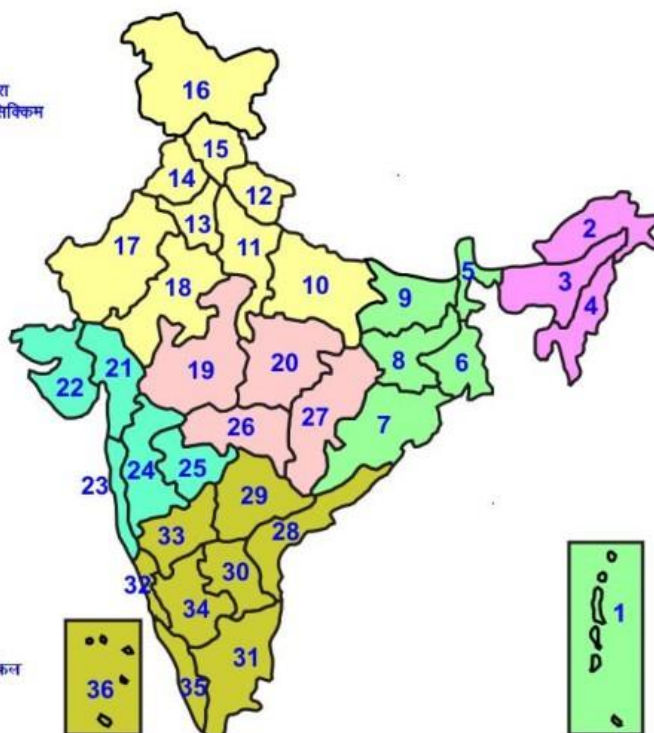
**For more details kindly visit <https://mausam.imd.gov.in> or contact 011-2434-4599**

**(Service to the nation since 1875)**



## LEGENDS

- 1 अंडमान और निकोबार द्वीप समुह
- 2 अरुणाचल प्रदेश
- 3 असम और मेघालय
- 4 नागालैंड मनीपुर मीजोरम और त्रिपुरा
- 5 उप हिमालय पश्चिम बंगाल एवं सिक्किम
- 6 पश्चिम बंगाल
- 7 ओडिसा
- 8 झारखंड
- 9 बिहार
- 10 पूर्वी उत्तर प्रदेश
- 11 पश्चिम उत्तर प्रदेश
- 12 उत्तराखंड
- 13 हरियाणा चंडीगढ़ एवं दिल्ली
- 14 पंजाब
- 15 हिमाचल प्रदेश
- 16 जम्मू एवं कश्मीर एवं लद्दाख
- 17 पश्चिम राजस्थान
- 18 पूर्वी राजस्थान
- 19 पश्चिम मध्य प्रदेश
- 20 पूर्वी मध्य प्रदेश
- 21 गुजरात क्षेत्र
- 22 सौराष्ट्र एवं कच्छ
- 23 कोंकण एवं गोवा
- 24 मध्य महाराष्ट्र
- 25 मराठावाड़ा
- 26 विदर्भ
- 27 छत्तीसगढ़
- 28 तटीय आंध्र प्रदेश एवं यनम
- 29 तेलंगाना
- 30 रायलसेमा
- 31 तमिलनाडु, पुदुचेरी एवं कराईकल
- 32 तटिय कर्नाटक
- 33 आंतरिक उत्तरी कर्नाटक
- 34 आंतरिक दक्षिणी कर्नाटक
- 35 केरल एवं माहे
- 36 लक्षद्वीप



1. Andaman & Nicobar Islands
2. Arunachal Pradesh
3. Assam & Meghalaya
4. Nagaland, Manipur, Mizoram & Tripura
5. Sub-Himalayan West Bengal & Sikkim
6. Gangetic West Bengal
7. Orissa
8. Jharkhand
9. Bihar
10. East Uttar Pradesh
11. West Uttar Pradesh
12. Uttarakhand
13. Haryana, Chd & Delhi
14. Punjab
15. Himachal Pradesh
16. Jammu & Kashmir and Ladakh
17. West Rajasthan
18. East Rajasthan
19. West Madhya Pradesh
20. East Madhya Pradesh
21. Gujarat
22. Saurashtra
23. Konkan & Goa
24. Madhya Maharashtra
25. Marathawada
26. Vidharbha
27. Chhattisgarh
28. Coastal Andhra Pradesh & Yanam
29. Telangana
30. Rayalaseema
31. Tamilnadu, Puducherry & Karaikal
32. Coastal Karnataka
33. North Interior Karnataka
34. South Interior Karnataka
35. Kerala & Mahe
36. Lakshadweep

## SPATIAL DISTRIBUTION (% of Stations reporting)

% Stations	Category	% Stations	Category
76-100	Widespread (WS/Most Places)	26-50	Scattered (SCT/ A Few Places)
51-75	Fairly Widespread (FWS/ Many Places)	1-25	Isolated (ISOL)

### Subdivision Colour

- NO WARNING
- WATCH (BE UPDATED)
- ALERT (BE PREPARED TO TAKE ACTION)
- WARNING (TAKE ACTION)

### Probabilistic Forecast

Terms	Probability of Occurrence (%)
Unlikely	< 25
Likely	25 - 50
Very Likely	50 - 75
Most Likely	> 75

-  Heavy Rain

 Thunderstorm & Lightning

 Strong surface winds

 Cold Wave

 Hot & Humid

 Very Heavy Rain

 Hailstorm

 Heat Wave


 Cold Day

 Extremely Heavy Rain

 Dust Storm

 Hot Day

 Ground Frost

 Heavy Snow

 Dust Raising Winds

 Warm Night

 Fog

\*Red color warning does not mean "Red Alert" Red color warning means "Take Action"

Forecast and warning for any day is valid from 0830 hours IST of day till 0830 hours IST of next day

For more details kindly visit <https://mausam.imd.gov.in> or contact 011-2434-4599

(Service to the nation since 1875)

## LEGENDS

### WARNING

<b>WARNING (TAKE ACTION)</b>
<b>ALERT (BE PREPARED)</b>
<b>WATCH (BE UPDATED)</b>
<b>NO WARNING (NO ACTION)</b>

### Probabilistic Forecast

Terms	Probability of Occurrence (%)
Unlikely	< 25
Likely	25 - 50
Very Likely	50 - 75
Most Likely	> 75



Heavy: 64.5 to 115.5 mm/cm \*  
Very Heavy: 115.6 to 204.4 mm/cm \*  
Extremely Heavy: > 204.4 mm/cm \*



When maximum temperature of a station reaches  $\geq 40^{\circ}\text{C}$  for plains and  $\geq 30^{\circ}\text{C}$  for hilly regions  
(a) Based on Departure from normal

Heat Wave: Maximum Temperature Departure from normal  $4.5^{\circ}\text{C}$  to  $6.4^{\circ}\text{C}$ .  
Severe Heat Wave: Maximum Temperature Departure from normal  $\geq 6.5^{\circ}\text{C}$

(b). Based on Actual maximum temperature

Heat Wave: When actual maximum temperature  $\geq 45^{\circ}\text{C}$ .  
Severe Heat Wave: When actual maximum temperature  $\geq 47^{\circ}\text{C}$

(c). Criteria for heat wave for coastal stations

When maximum temperature departure is  $> 4.5^{\circ}\text{C}$  from normal. Heat Wave may be described provided maximum temperature  $\geq 37^{\circ}\text{C}$



When maximum temperature remains  $40^{\circ}\text{C}$

Warm Night: When minimum temperature departure  $4.5^{\circ}\text{C}$  to  $6.4^{\circ}\text{C}$ .  
Severe Warm Night: When minimum temperature departure  $> 6.4^{\circ}\text{C}$ .



When minimum temperature of a station  $\leq 10^{\circ}\text{C}$  for plains and  $\leq 0^{\circ}\text{C}$  for hilly regions.

(a). Based on departure

Cold Wave: Minimum Temperature Departure from normal  $-4.5^{\circ}\text{C}$  to  $-6.4^{\circ}\text{C}$ .  
Severe Cold Wave: Minimum Temperature Departure from normal  $\leq -6.5^{\circ}\text{C}$

(b) Based on actual Minimum Temperature (for Plains only)

Cold Wave: When Minimum Temperature is  $\leq 4.0^{\circ}\text{C}$   
Severe Cold Wave: When Minimum Temperature is  $\leq 2.0^{\circ}\text{C}$

(c) For Coastal Stations

When Minimum Temperature departure is  $\leq -4.5^{\circ}\text{C}$  & actual Minimum Temperature is  $\leq 15^{\circ}\text{C}$



When minimum temperature of a station  $\leq 10^{\circ}\text{C}$  for plains and  $\leq 0^{\circ}\text{C}$  for hilly regions  
Based on departure

Cold Day: Maximum Temperature Departure from normal  $-4.5^{\circ}\text{C}$  to  $-6.4^{\circ}\text{C}$ .  
Severe Cold Day: Maximum Temperature Departure from normal  $\leq -6.5^{\circ}\text{C}$



Phenomenon of small droplets suspended in air and the horizontal visibility  $< 1\text{km}$

Moderate Fog: When the visibility between 500-200 metres  
Dense Fog: when the visibility between 50-200 metres  
Very Dense Fog: when the visibility  $< 50$  metres



Sudden electrical discharges manifested by a flash of light (Lightning) and a sharp rumbling sound (thunder)



An ensemble of particles of dust or sand energetically lifted to great heights by a strong and turbulent wind.



Ice deposits on ground

Air temperature  $\leq 4^{\circ}\text{C}$  (over Plains)



A strong wind that rises suddenly, lasts for at least 1 minute.

Moderate: Wind speed 52-61 kmph  
Severe: Wind speed 62-87 kmph  
Very Severe: Wind speed  $> 87$  kmph



Effect of various waves in the sea over specific area

Rough to very rough: Wind speed 41-62 kmph (22-33 knots) & Wave height 2.5-6 metre  
High to very high: Wind speed 63-117 kmph (34-63 knots) & Wave height 6-14 metre  
Phenomenal: Wind speed  $> 117$  kmph ( $> 63$  knots) & Wave height  $> 14$  metre



Cyclonic Storm: Wind speed 62-87 kmph (34-47 knots)

Severe Cyclonic Storm: Wind speed 88-117 kmph (48-63 knots)  
Very Severe Cyclonic Storm: Wind speed 118-165 kmph (64-89 knots)  
Extremely Severe Cyclonic Storm: Wind speed 166-220 kmph (90-119 knots)  
Super Cyclone Storm: Wind speed  $> 220$  kmph ( $> 119$  knots)

\*Red color warning does not mean "Red Alert" Red color warning means "Take Action"

Forecast and warning for any day is valid from 0830 hours IST of day till 0830 hours IST of next day

For more details kindly visit <https://mausam.imd.gov.in> or contact 011-2434-4599

(Service to the nation since 1875)