

2025-08-30

Time of Issue: 13:40:00 hours IST  
(Mid-Day)

## ALL INDIA WEATHER SUMMARY AND FORECAST BULLETIN

### Significant Weather Features

#### Weather Forecast and Warnings:

##### Northwest India:

- Isolated **heavy rainfall** likely to continue over Uttarakhand, East Rajasthan during next 7 days; Jammu & Kashmir, Himachal Pradesh, Punjab, Haryana during 30<sup>th</sup> August-02<sup>nd</sup> September; West Uttar Pradesh during 31<sup>st</sup> August-02<sup>nd</sup> September; West Rajasthan during 30<sup>th</sup> August-01<sup>st</sup> September; East Uttar Pradesh on 01<sup>st</sup> & 02<sup>nd</sup> September with **isolated very heavy rainfall very likely over Himachal Pradesh on 30<sup>th</sup> & 31<sup>st</sup>; Uttarakhand during 30<sup>th</sup> August-01<sup>st</sup> September; Jammu, Punjab on 30<sup>th</sup>; East Rajasthan on 31<sup>st</sup> August and Uttar Pradesh on 01<sup>st</sup> September.**
- Light/moderate rainfall at most/many places over Northwest India and accompanied with thunderstorm & lightning likely over Uttar Pradesh on 30<sup>th</sup> August; Rajasthan, Jammu-Kashmir-Ladakh-Gilgit-Baltistan-Muzaffarabad, Uttarakhand during next 5 days.

##### West India:

- Isolated heavy rainfall** is very likely over Gujarat region, Konkan & Goa, Madhya Maharashtra during next 7 days and Saurashtra & Kutch on 30<sup>th</sup> August, 04<sup>th</sup> & 05<sup>th</sup> September with **very heavy rainfall** over Konkan, Ghat areas of Madhya Maharashtra on 30<sup>th</sup> August; Gujarat Region on 30<sup>th</sup> August & during 03<sup>rd</sup>-05<sup>th</sup> September.
- Light to moderate rainfall at most/many places very likely over the region during next 7 days.

##### East & Central India:

- Isolated **heavy rainfall** likely over Madhya Pradesh, Chhattisgarh during next 7 days; Sub-Himalayan West Bengal & Sikkim, Vidarbha on 30<sup>th</sup> & 31<sup>st</sup>; Jharkhand on 02<sup>nd</sup> September; Odisha during 31<sup>st</sup> August-03<sup>rd</sup> September with isolated **very heavy rainfall** over West Madhya Pradesh, Sub-Himalayan West Bengal on 30<sup>th</sup> August.
- Light to moderate rainfall at most/many places accompanied with thunderstorm & lightning likely over the region during next 7 days.

##### Northeast India:

- Isolated **heavy rainfall** likely to continue over Arunachal Pradesh on 30<sup>th</sup> August, 04<sup>th</sup> & 05<sup>th</sup> September; Assam & Meghalaya, Nagaland, Manipur, Mizoram & Tripura during 30<sup>th</sup> August-05<sup>th</sup> September with **very heavy rainfall** over Arunachal Pradesh on 30<sup>th</sup> August.
- Light/moderate rainfall at many places accompanied with thunderstorm & lightning likely during next 5 days.

##### South Peninsular India:

- Isolated **heavy rainfall** likely over Coastal Karnataka during next 7 days; Kerala on 30<sup>th</sup> August & during 03<sup>rd</sup>-05<sup>th</sup> September; Telangana on 31<sup>st</sup>; Coastal Andhra Pradesh & Yanam during 31<sup>st</sup> August-03<sup>rd</sup> September.
- Light to moderate rainfall at many places likely over the region during next 7 days.

\*Red color warning does not mean "Red Alert" Red color warning means "Take Action"

Forecast and warning for any day is valid from 0830 hours IST of day till 0830 hours IST of next day

For more details kindly visit <https://mausam.imd.gov.in> or contact 011-2434-4599

(Service to the nation since 1875)

### Main Weather Observations:

❖ **Rainfall distribution** (from 0830 hours IST of yesterday to 0830 hours IST of today): **at most places** over Andaman & Nicobar Islands, Arunachal Pradesh, Sub Himalayan West Bengal & Sikkim, Uttarakhand, Gujarat Region, Konkan & Goa, Marathwada, Vidarbha, Coastal Karnataka, Kerala & Mahe and Lakshadweep; **at many places** over Assam & Meghalaya, Nagaland, Manipur, Mizoram & Tripura, Gangetic West Bengal, Himachal Pradesh, West Rajasthan, East Rajasthan, West Madhya Pradesh, Madhya Maharashtra, Telangana and North Interior Karnataka; **at a few places** over Odisha, Jharkhand, West Uttar Pradesh, Haryana-Chandigarh-Delhi, Punjab, East Madhya Pradesh, Chhattisgarh, Coastal Andhra Pradesh & Yanam and South Interior Karnataka; **at isolated places** over Bihar, East Uttar Pradesh, Saurashtra & Kutch, Rayalaseema and Tamil Nadu, Puducherry & Karaikal; **Dry** over rest of the country.

❖ **Significant rainfall recorded(in cm)** (from 0830 hours IST of yesterday to 0830 hours IST of today): **Gujarat Region:** Halol (dist Panchmahal) 17; Dolvan (dist Tapi) 15; Shahera (dist Panchmahal) 13; Umergam (dist Valsad) 10; Nadiad (dist Kheda), Valod (dist Tapi) 9 Each; Umreth (dist Anand), Umerpada (dist Surat), Kamrej (dist Surat) 8 Each; Olpad (dist Surat), Mandvi (dist Surat) 7 Each; Bardoli (dist Surat), Mahudha (dist Kheda), Anand (dist Anand) 6 Each; **Sub Himalayan West Bengal & Sikkim:** Buxaduar (dist Alipurduar) 16; Nagarkata (dist Jalpaiguri) 15; Chengmari/Diana (dist Jalpaiguri), Diana Tea Estate (dist Jalpaiguri) 14 Each; Banarhat High School (dist Jalpaiguri) 12; Domohani (dist Jalpaiguri), Maynaguri College (dist Jalpaiguri) 10 Each; Bhagatpur Tea Estate (dist Jalpaiguri) 9; Moraghat Tea Estate (dist Jalpaiguri), Tra Nagarkata (dist Jalpaiguri) 7 Each; Denguajhar Tea Garden (dist Jalpaiguri), Karballa Tea Estate (dist Jalpaiguri), Palashbari Tea Estate (dist Jalpaiguri) 6 Each; **West Madhya Pradesh:** Khargone-aws (dist Khargone), Warla (dist Barwani) 15 Each; Thikri (dist Barwani) 11; Pithampur (dist Dhar), Chachariyapati (dist Barwani) 10 Each; Pandhana (dist Khandwa), Rajpur (dist Barwani), Bhagwanpura (dist Khargone) 9 Each; Sendhwa(med) (dist Barwani) 8; Dhar-aws (dist Dhar), Dharampuri Tappa (dist Dhar), Gogawan (dist Khargone) 7 Each; Depalpur (dist Indore), Tirla (dist Dhar) 6 Each; **Konkan & Goa:** Mhasla (dist Raigad) 14; Harnai IMD (dist Ratnagiri) 13; Murud (dist Raigad) 12; Rajapur (dist Ratnagiri) 11; Santacruz (dist Mumbai Suburban), Panvel ARG (dist Raigad), Rameshwar ARG (dist Sindhudurg) 9 Each; Tbia IMD Part Time (dist Thane), Tala (dist Raigad) 8 Each; Sanguem (dist South Goa), Roha (dist Raigad), Kudal (dist Sindhudurg), Mulde ARG (dist Sindhudurg), Devgad (dist Sindhudurg), Savarde-arg (dist Ratnagiri), Dahanu (dist Palghar) 7 Each; Malvan (dist Sindhudurg), Guhagarh (dist Ratnagiri), Dapoli ARG (dist Ratnagiri), Wakwali ARG (dist Ratnagiri), Vaibhavwadi (dist Sindhudurg), Panjim (dist North Goa), Quepem (dist South Goa), Lanja (dist Ratnagiri) 6 Each; **West Uttar Pradesh:** Nawabganj (dist Bareilly) 13; Bijnor (dist Bijnor) 12; Meerut (dist Meerut) 11; Muzaffarnagar (dist Muzaffarnagar) 10; Muzaffarnagar(t) (dist Muzaffarnagar) 9; Dhampur (dist Bijnor) 8; Meerut Teh (dist Meerut), Jansath (dist Muzaffarnagar) 6 Each; **Madhya Maharashtra:** Erandol (dist Jalgaon) 12; Gaganbawada (dist Kolhapur) 9; Jamner (dist Jalgaon), Igatpuri (dist Nashik) 8 Each; Pathardi (dist Ahilyanagar), Amalner (dist Jalgaon) 7 Each; Shahuwadi (dist Kolhapur), Nevasa (dist Ahilyanagar) 6 Each; **Coastal Karnataka:** Gersoppa (dist Uttara Kannada) 11; Manki (dist Uttara Kannada) 9; Mulki (dist Dakshina Kannada) 8; Mudubidre (dist Dakshina Kannada), Castle Rock (dist Uttara Kannada) 7 Each; Gokarna (dist Uttara Kannada), Sulya (dist Dakshina Kannada) 6 Each; **Punjab:** Phangota (dist Pathankot) 11; Ranjit Sagar Dam Site (dist Pathankot) 10; **Himachal Pradesh:** Chuari (dist Chamba) 10; Jogindarnagar (dist Mandi) 9; Dharmasala (dist Kangra), Rampur Bushar (dist Shimla) 7 Each; Palampur (dist Kangra), Nahan (dist Sirmour), Simla (dist Shimla), Kataula (dist Mandi) 6 Each; **Arunachal Pradesh:** Naharlagun (dist Papumpara) 10; Daparijo (dist Upper Subansiri), Itanagar (dist Papumpara) 9 Each; Naharlagun AWS (dist Papumpara) 7; Tuting (dist Upper Siang) 6; **East Uttar Pradesh:** Jaunpur CWC (dist Jaunpur) 9; Patti (dist Pratapgarh) 8; **Assam & Meghalaya:** Ranganadi Nt Xing (dist Lakhimpur) 9; Shella (dist East Khasi Hills), N.lakhimpur/Lilabari (dist Lakhimpur), Dhemaji (dist Dhemaji), Chouldhuwaghat ARG (dist Lakhimpur), Lakhimpur ARG (dist Lakhimpur) 7 Each; **Marathwada:** Hadgaon (dist Nanded) 8; Lohara (dist Dharashiv) 6; **East Rajasthan:** Badesar SR (dist Chittorgarh) 8; Nimbahera (dist Chittorgarh), Mavli (dist Udaipur) 7 Each; Malpura (dist Tonk), Naraina SR (dist Jaipur), Vallabhnagar (dist Udaipur) 6 Each; **South Interior Karnataka:** Kalasa (dist Chikkamagaluru), Kottigehara (dist Chikkamagaluru), Agumbe AWS (dist Shivamogga) 7 Each; **East Madhya Pradesh:** Badamalhera (dist Chhatarpur) 6; **Chhattisgarh:** Kohkameta (dist Narayanpur) 6; **West Rajasthan:** Bali (dist Pali), Desuri (dist Pali), Kolayat Magra (dist Bikaner), Nokh SR (dist Jaisalmer) 6 Each; **Haryana-Chandigarh-Delhi:** Sadhaura (dist Yamuna Nagar), Narnaul (dist Mahendragarh), Mahendragarh (dist Mahendragarh), Safdarjung (dist South East Delhi) 6 Each; **Uttarakhand:** Dunda (dist Uttarkashi), Khatima (dist Udham Singh Nagar), Ukhimath (dist Rudraprayag) 6 Each; **Bihar:** Khagadia (dist Khagaria) 6; **Andaman & Nicobar Islands:** Maya Bandar (dist North & Middle Andaman) 6.

❖ **Heavy Rainfall observed** (from 0830 hours IST of yesterday to 0830 hours IST of today): **Heavy to very heavy rain**

\*Red color warning does not mean "Red Alert" Red color warning means "Take Action"

Forecast and warning for any day is valid from 0830 hours IST of day till 0830 hours IST of next day

For more details kindly visit <https://mausam.imd.gov.in> or contact 011-2434-4599

(Service to the nation since 1875)

at isolated places over Sub Himalayan West Bengal & Sikkim, West Uttar Pradesh, West Madhya Pradesh, Gujarat Region, Konkan & Goa and Madhya Maharashtra. **Heavy rain** at isolated places over Arunachal Pradesh, Assam & Meghalaya, East Uttar Pradesh, Haryana-Chandigarh-Delhi, Punjab, Himachal Pradesh, West Rajasthan, East Rajasthan, Marathwada, Coastal Karnataka and South Interior Karnataka.

❖ **Minimum Temperature Departures (as on 30-08-2025): markedly above normal(> 5.1°C)** at few places over West Madhya Pradesh and East Madhya Pradesh; at isolated places over Assam & Meghalaya, Bihar, East Uttar Pradesh, West Uttar Pradesh and Himachal Pradesh. **appreciably above normal(3.1°C to 5.0°C)** at few places over Saurashtra & Kutch; at isolated places over Sub Himalayan West Bengal & Sikkim, Odisha, Jammu-Kashmir-Ladakh-Gilgit-Baltistan-Muzaffarabad and West Rajasthan. **above normal(1.6°C to 3.0°C)** at many places over Andaman & Nicobar Islands; at few places over Gujarat Region and South Interior Karnataka; at isolated places over Gangetic West Bengal, East Rajasthan, Madhya Maharashtra, Vidarbha, Chhattisgarh, Rayalaseema, Tamil Nadu, Puducherry & Karaikal and Kerala & Mahe. **near normal(-1.5°C to 1.5°C)** at many places over Uttarakhand, Haryana-Chandigarh-Delhi and Telangana; at most places over Nagaland, Manipur, Mizoram & Tripura, Jharkhand, Punjab, Konkan & Goa, Marathwada, Coastal Andhra Pradesh & Yanam, Coastal Karnataka, North Interior Karnataka and Lakshadweep; at few places over Arunachal Pradesh. **The lowest minimum temperature** of 18.0°C is reported at HALFLONG (ASSAM), and KHANDWA (MADHYA PRADESH) over the Plains of India.

❖ **Maximum Temperature Departures (as on 29-08-2025): markedly above normal(> 5.1°C)** at isolated places over Assam & Meghalaya, Odisha, Jammu-Kashmir-Ladakh-Gilgit-Baltistan-Muzaffarabad and Chhattisgarh. **appreciably above normal(3.1°C to 5.0°C)** at isolated places over West Rajasthan, Vidarbha, Rayalaseema and Tamil Nadu, Puducherry & Karaikal. **above normal(1.6°C to 3.0°C)** at few places over West Madhya Pradesh and East Madhya Pradesh; at isolated places over East Uttar Pradesh, Himachal Pradesh, Saurashtra & Kutch and Madhya Maharashtra. **near normal(-1.5°C to 1.5°C)** at many places over Andaman & Nicobar Islands, Sub Himalayan West Bengal & Sikkim, Jharkhand, Bihar, East Rajasthan, Coastal Andhra Pradesh & Yanam, Telangana and Lakshadweep; at most places over Nagaland, Manipur, Mizoram & Tripura and South Interior Karnataka; at few places over Gangetic West Bengal, West Uttar Pradesh, Gujarat Region, Konkan & Goa and Kerala & Mahe; at isolated places over Uttarakhand, Haryana-Chandigarh-Delhi and North Interior Karnataka. **The highest maximum temperature** of 40.5°C was reported at MADURAI (A) (TAMIL NADU).



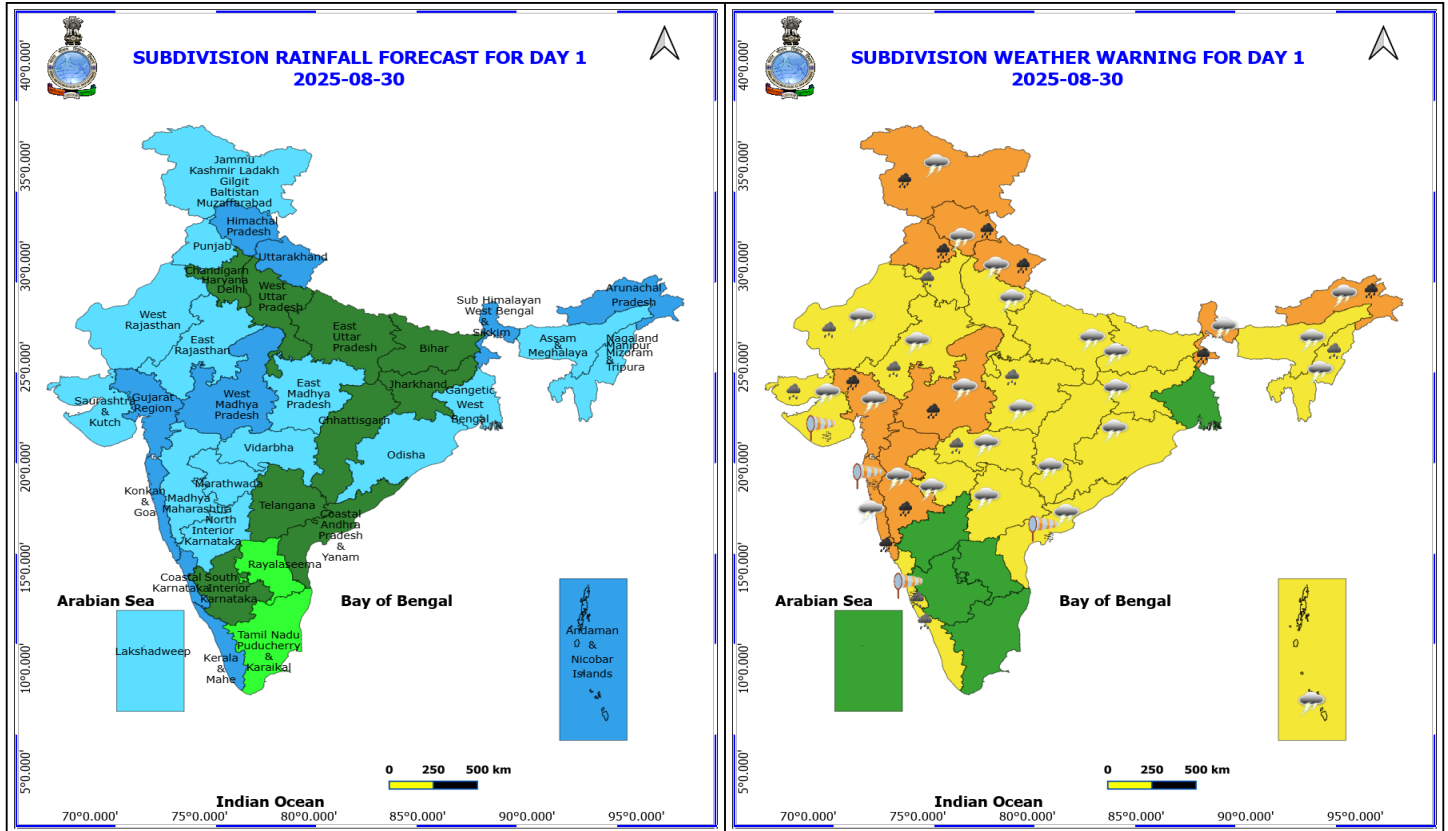
**Meteorological Analysis (Based on 0830 hours IST)**

- The **monsoon trough** at mean sea level now passes through Bikaner, Kota, Seoni, Durg, Bhawanipatna, Gopalpur and thence to east-southeastwards to central Bay of Bengal.
- The middle tropospheric **cyclonic circulation** over North Konkan coast & neighbourhood at 5.8 km above mean sea level persists.
- The **upper air cyclonic circulation** over central parts of south Madhya Pradesh lay over southwest Madhya Pradesh and extends upto 3.1 km above mean sea level tilting southwards with height.
- The **upper air cyclonic circulation** over northeast Assam & neighbourhood persists and now seen at 0.9 km above mean sea level.
- The **Western Disturbance** as a **cyclonic circulation** over north Pakistan & adjoining Punjab persists and now seen between 5.8 & 9.6 km above mean sea level.

**Weather Outlook for subsequent 3 days**

- Scattered to Fairly widespread rainfall likely over northern, western India, western peninsular and eastern India.





### 30 August (Day 1)

- ❖ **Heavy to Very Heavy Rainfall** very likely at isolated places over Arunachal Pradesh, Gujarat Region, Himachal Pradesh, Jammu-Kashmir-Ladakh-Gilgit-Baltistan-Muzaffarabad, Konkan & Goa, Madhya Maharashtra, Punjab, Sub Himalayan West Bengal & Sikkim, Uttarakhand and West Madhya Pradesh.
- ❖ **Heavy Rainfall** very likely at isolated places over Coastal Karnataka, East Madhya Pradesh, Haryana, Chandigarh & Delhi, Kerala & Mahe, Nagaland, Manipur, Mizoram and Tripura, Rajasthan, Saurashtra & Kutch and Vidarbha.
- ❖ **Thunderstorm accompanied with lightning & gusty winds(30-40kmph)** very likely at isolated places over Andaman & Nicobar Islands, Bihar, Jammu-Kashmir-Ladakh-Gilgit-Baltistan-Muzaffarabad, Jharkhand, Odisha, Sub Himalayan West Bengal & Sikkim and Telangana.
- ❖ **Thunderstorm accompanied with Lightning** very likely at isolated places over Arunachal Pradesh, Assam & Meghalaya, Chhattisgarh, Coastal Andhra Pradesh, Gujarat State, Himachal Pradesh, Konkan & Goa, Madhya Pradesh, Maharashtra, Nagaland, Manipur, Mizoram and Tripura, Rajasthan, Uttar Pradesh and Uttarakhand.
- ❖ **Strong Surface Winds** very likely at isolated places over Coastal Andhra Pradesh, Coastal Karnataka, Konkan & Goa and Saurashtra & Kutch.
- ❖ **Squally wind with speed reaching 45 kmph to 55 kmph gusting to 65 kmph** is likely to prevail along and off Somalia, Oman coasts, most parts of westcentral Arabian sea, adjoining & some parts of southwest, eastcentral Arabian Sea.
- ❖ **Squally weather with wind speed reaching 40 - 50 kmph gusting to 60 kmph** likely to prevail along and off north Konkan, Goa, Kerala coasts, along and off Karnataka coast, over many parts of eastcentral Arabian Sea, many parts of southeast, southwest Arabian Sea, over Lakshadweep, Comorin areas & some parts of Maldives area, some

**\*Red color warning does not mean "Red Alert" Red color warning means "Take Action"**

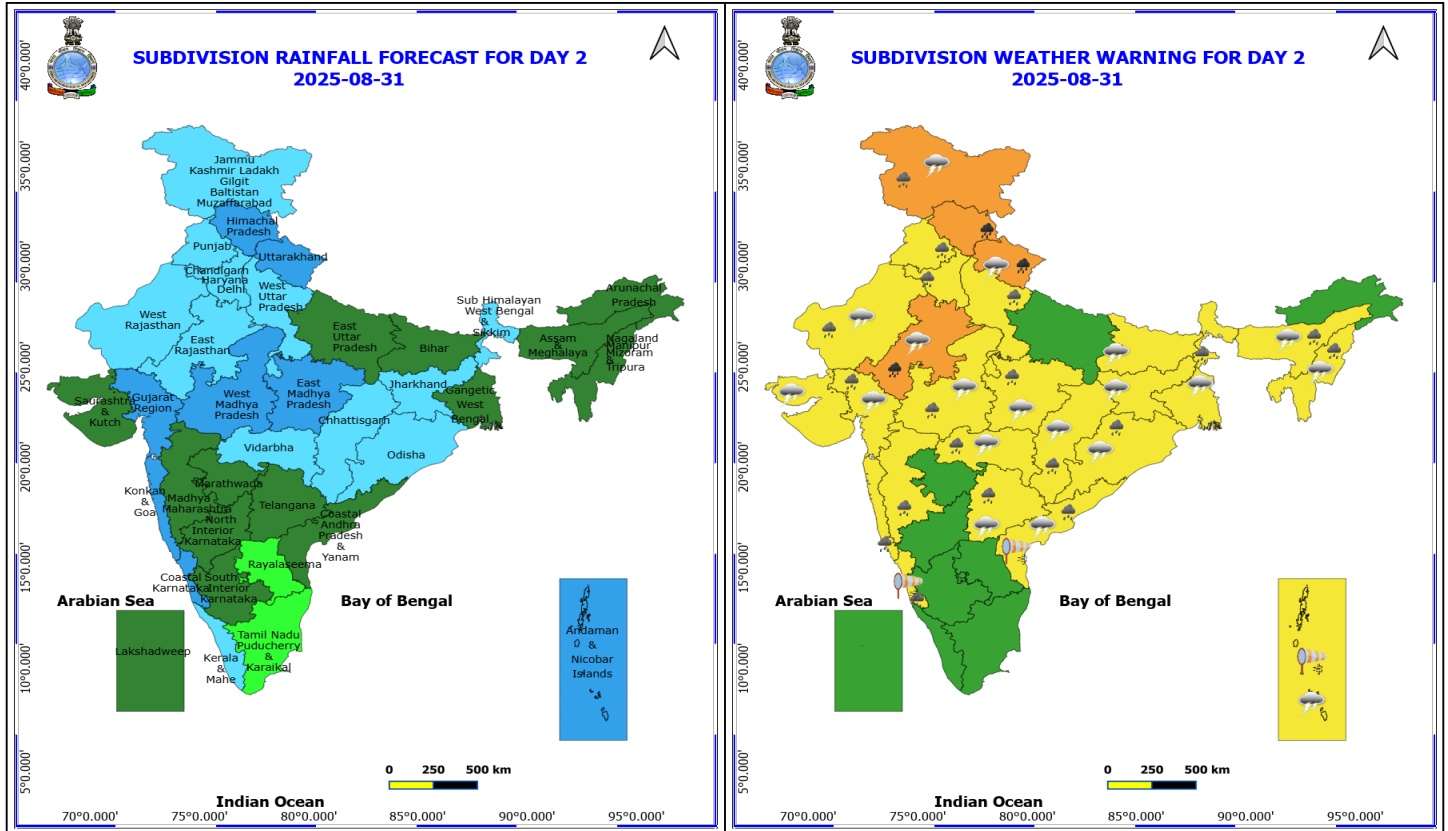
**Forecast and warning for any day is valid from 0830 hours IST of day till 0830 hours IST of next day**

**For more details kindly visit <https://mausam.imd.gov.in> or contact 011-2434-4599**

**(Service to the nation since 1875)**



parts of eastcentral & adjoining westcentral Bay of Bengal, most parts of south Bay of Bengal, off Sri Lanka coast, over Gulf of Mannar.



### 31 August (Day 2)

- ❖ **Heavy to Very Heavy Rainfall** very likely at isolated places over East Rajasthan, Himachal Pradesh and Uttarakhand.
- ❖ **Heavy Rainfall** very likely at isolated places over Assam & Meghalaya, Chhattisgarh, Coastal Andhra Pradesh, Coastal Karnataka, Gujarat Region, Haryana, Chandigarh & Delhi, Jammu-Kashmir-Ladakh-Gilgit-Baltistan-Muzaffarabad, Konkan & Goa, Madhya Maharashtra, Madhya Pradesh, Nagaland, Manipur, Mizoram and Tripura, Odisha, Punjab, Sub Himalayan West Bengal & Sikkim, Telangana, Vidarbha, West Rajasthan and West Uttar Pradesh.
- ❖ **Thunderstorm accompanied with lightning & gusty winds(40-50kmph)** very likely at isolated places over Andaman & Nicobar Islands.
- ❖ **Thunderstorm accompanied with lightning & gusty winds(30-40kmph)** very likely at isolated places over Bihar, Gangetic West Bengal, Jammu-Kashmir-Ladakh-Gilgit-Baltistan-Muzaffarabad, Jharkhand, Odisha and Telangana.
- ❖ **Thunderstorm accompanied with Lightning** very likely at isolated places over Assam & Meghalaya, Chhattisgarh, Coastal Andhra Pradesh, Gujarat State, Madhya Pradesh, Nagaland, Manipur, Mizoram and Tripura, Rajasthan, Uttarakhand and Vidarbha.
- ❖ **Strong Surface Winds** very likely at isolated places over Andaman & Nicobar Islands, Coastal Andhra Pradesh and Coastal Karnataka.

Squally wind with speed reaching 45 kmph to 55 kmph gusting to 65 kmph is likely to prevail along and off Somalia, Oman coasts, most parts of westcentral Arabian sea, adjoining & some parts of southwest, eastcentral Arabian Sea.

**\*Red color warning does not mean "Red Alert" Red color warning means "Take Action"**

**Forecast and warning for any day is valid from 0830 hours IST of day till 0830 hours IST of next day**

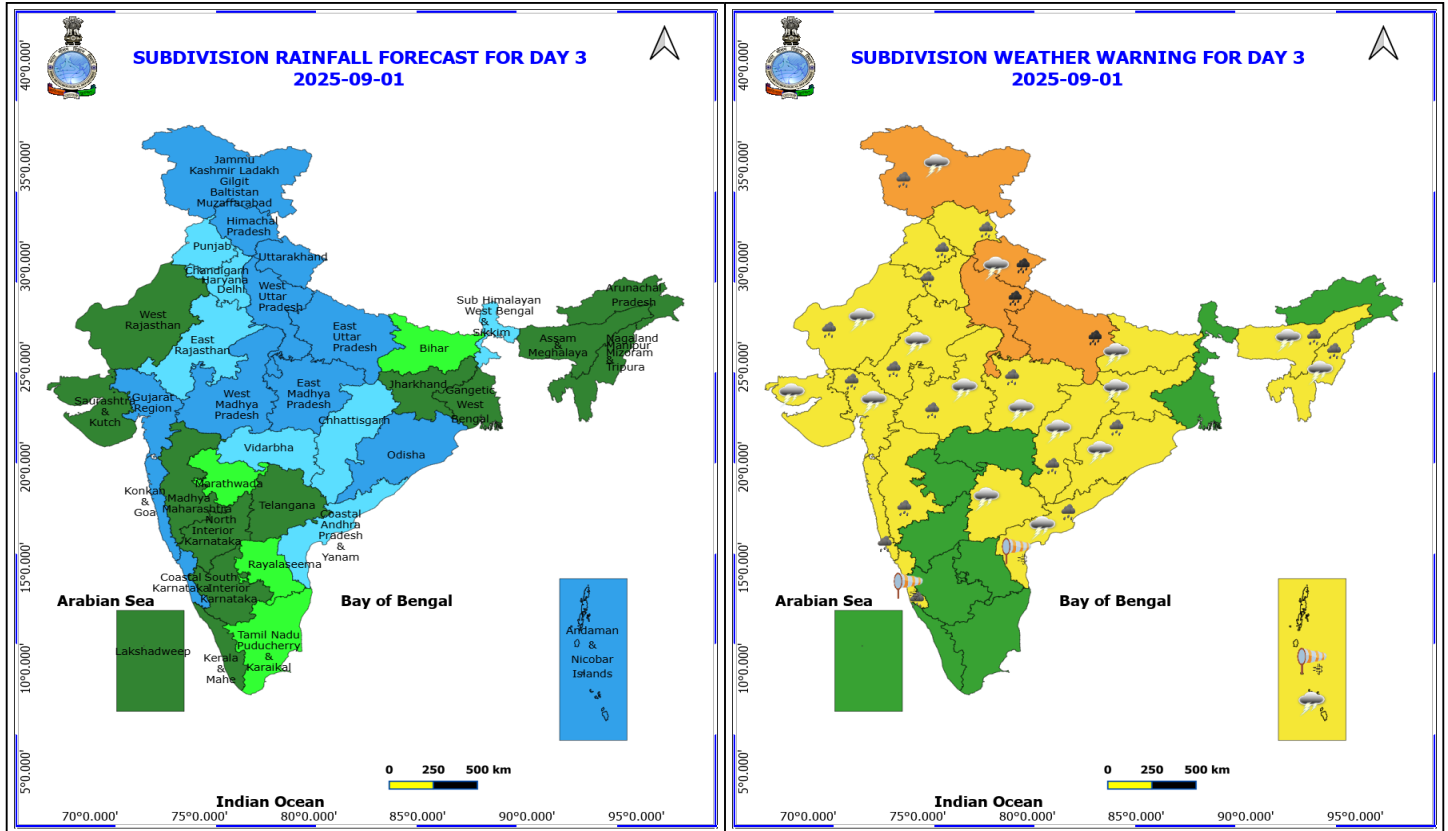
**For more details kindly visit <https://mausam.imd.gov.in> or contact 011-2434-4599**

**(Service to the nation since 1875)**



Squally weather with wind speed reaching 40 - 50 kmph gusting to 60 kmph likely to prevail along and off south Gujarat, Konkan, Goa, Karnataka coasts & adjoining sea areas, over most parts of eastcentral Arabian Sea, many parts of southeast Arabian Sea, Lakshadweep and adjoining Maldives areas, along and off north Andhra Pradesh coast, off south Andhra Pradesh, Tamil Nadu coasts, over most parts of central, south Bay of Bengal, off Sri Lanka coast, over Gulf of Mannar, Andaman Sea.





## 1 September (Day 3)

- ❖ **Heavy to Very Heavy Rainfall** very likely at isolated places over Uttar Pradesh and Uttarakhand.
- ❖ **Heavy Rainfall** very likely at isolated places over Assam & Meghalaya, Chhattisgarh, Coastal Andhra Pradesh, Coastal Karnataka, Gujarat Region, Haryana, Chandigarh & Delhi, Himachal Pradesh, Jammu-Kashmir-Ladakh-Gilgit-Baltistan-Muzaffarabad, Konkan & Goa, Madhya Maharashtra, Madhya Pradesh, Nagaland, Manipur, Mizoram and Tripura, Odisha, Punjab and Rajasthan.
- ❖ **Thunderstorm accompanied with lightning & gusty winds(40-50kmph)** very likely at isolated places over Andaman & Nicobar Islands.
- ❖ **Thunderstorm accompanied with lightning & gusty winds(30-40kmph)** very likely at isolated places over Bihar, Jammu-Kashmir-Ladakh-Gilgit-Baltistan-Muzaffarabad, Jharkhand, Odisha and Telangana.
- ❖ **Thunderstorm accompanied with Lightning** very likely at isolated places over Assam & Meghalaya, Chhattisgarh, Coastal Andhra Pradesh, Gujarat State, Madhya Pradesh, Nagaland, Manipur, Mizoram and Tripura, Rajasthan and Uttarakhand.
- ❖ **Strong Surface Winds** very likely at isolated places over Andaman & Nicobar Islands, Coastal Andhra Pradesh and Coastal Karnataka.

Squally wind with speed reaching 45 kmph to 55 kmph gusting to 65 kmph is likely to prevail along and off Somalia, Oman coasts, most parts of westcentral Arabian sea, adjoining & some parts of southwest, eastcentral Arabian Sea.

Squally weather with wind speed reaching 40 - 50 kmph gusting to 60 kmph likely to prevail along and off south Gujarat, Konkan, Goa, Karnataka coasts & adjoining sea areas, over most parts of eastcentral Arabian Sea, many parts of southeast Arabian Sea, Lakshadweep area, along and off north Andhra Pradesh coast, off south Andhra

**\*Red color warning does not mean "Red Alert" Red color warning means "Take Action"**

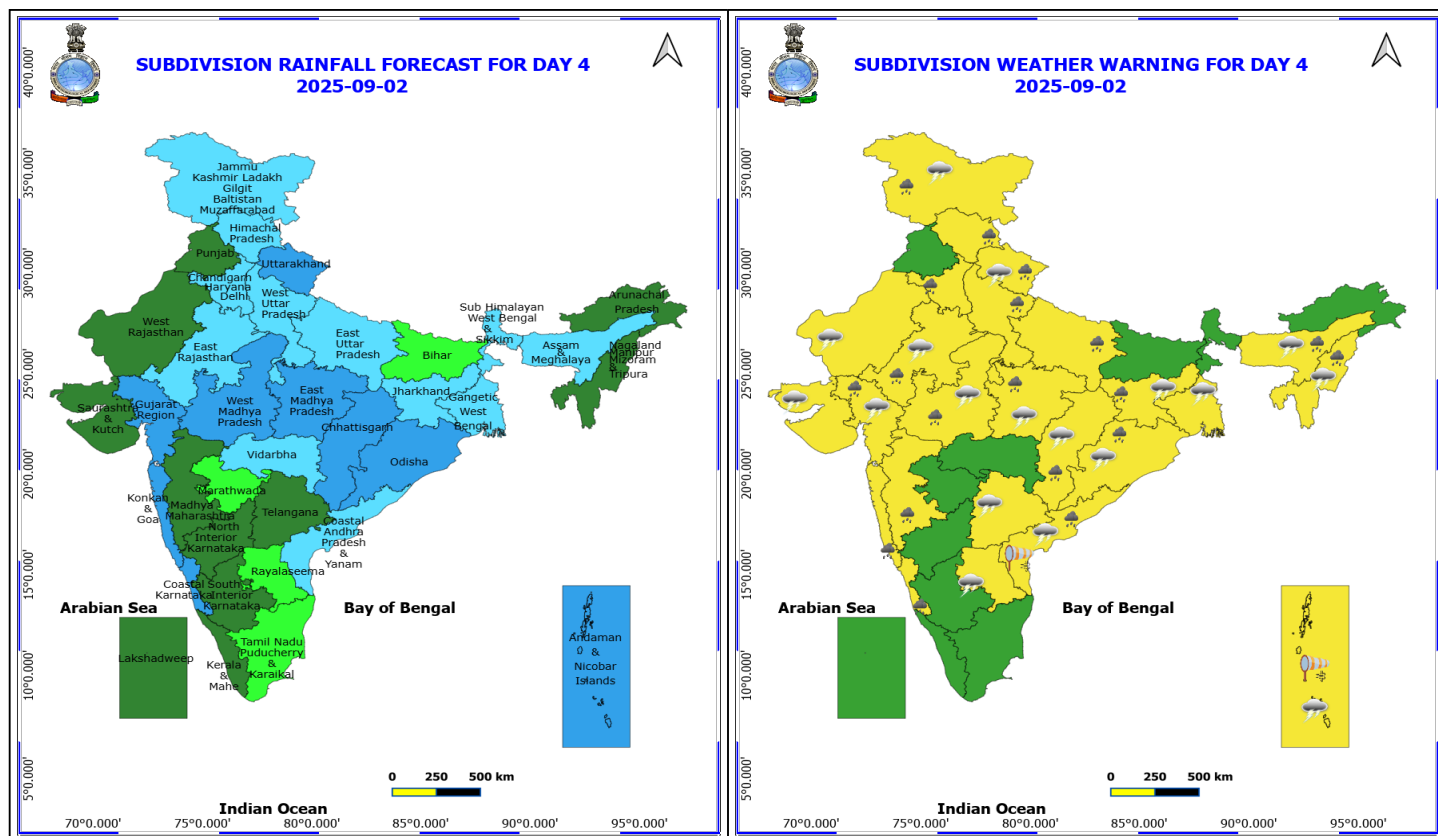
Forecast and warning for any day is valid from 0830 hours IST of day till 0830 hours IST of next day

For more details kindly visit <https://mausam.imd.gov.in> or contact 011-2434-4599

(Service to the nation since 1875)



Pradesh, Tamil Nadu coasts, over most parts of central, south Bay of Bengal, off Sri Lanka coast, over Gulf of Mannar, Andaman Sea.



## 2 September (Day 4)

❖ **Heavy Rainfall** likely at isolated places over Assam & Meghalaya, Chhattisgarh, Coastal Andhra Pradesh, Coastal Karnataka, East Rajasthan, Gujarat Region, Haryana, Chandigarh & Delhi, Himachal Pradesh, Jammu-Kashmir-Ladakh-Gilgit-Baltistan-Muzaffarabad, Jharkhand, Konkan & Goa, Madhya Maharashtra, Madhya Pradesh, Nagaland, Manipur, Mizoram and Tripura, Odisha, Uttar Pradesh and Uttarakhand.

❖ **Thunderstorm accompanied with lightning & gusty winds(30-40kmph)** likely at isolated places over Andaman & Nicobar Islands, Gangetic West Bengal, Jammu-Kashmir-Ladakh-Gilgit-Baltistan-Muzaffarabad, Jharkhand, Odisha and Telangana.

❖ **Thunderstorm accompanied with Lightning** likely at isolated places over Andhra Pradesh, Assam & Meghalaya, Chhattisgarh, Gujarat State, Madhya Pradesh, Nagaland, Manipur, Mizoram and Tripura, Rajasthan and Uttarakhand.

❖ **Strong Surface Winds** likely at isolated places over Andaman & Nicobar Islands and Coastal Andhra Pradesh.

Squally wind with speed reaching 45 kmph to 55 kmph gusting to 65 kmph is likely to prevail along and off Somalia, Oman coasts, most parts of westcentral Arabian sea, adjoining & some parts of southwest, eastcentral Arabian Sea.

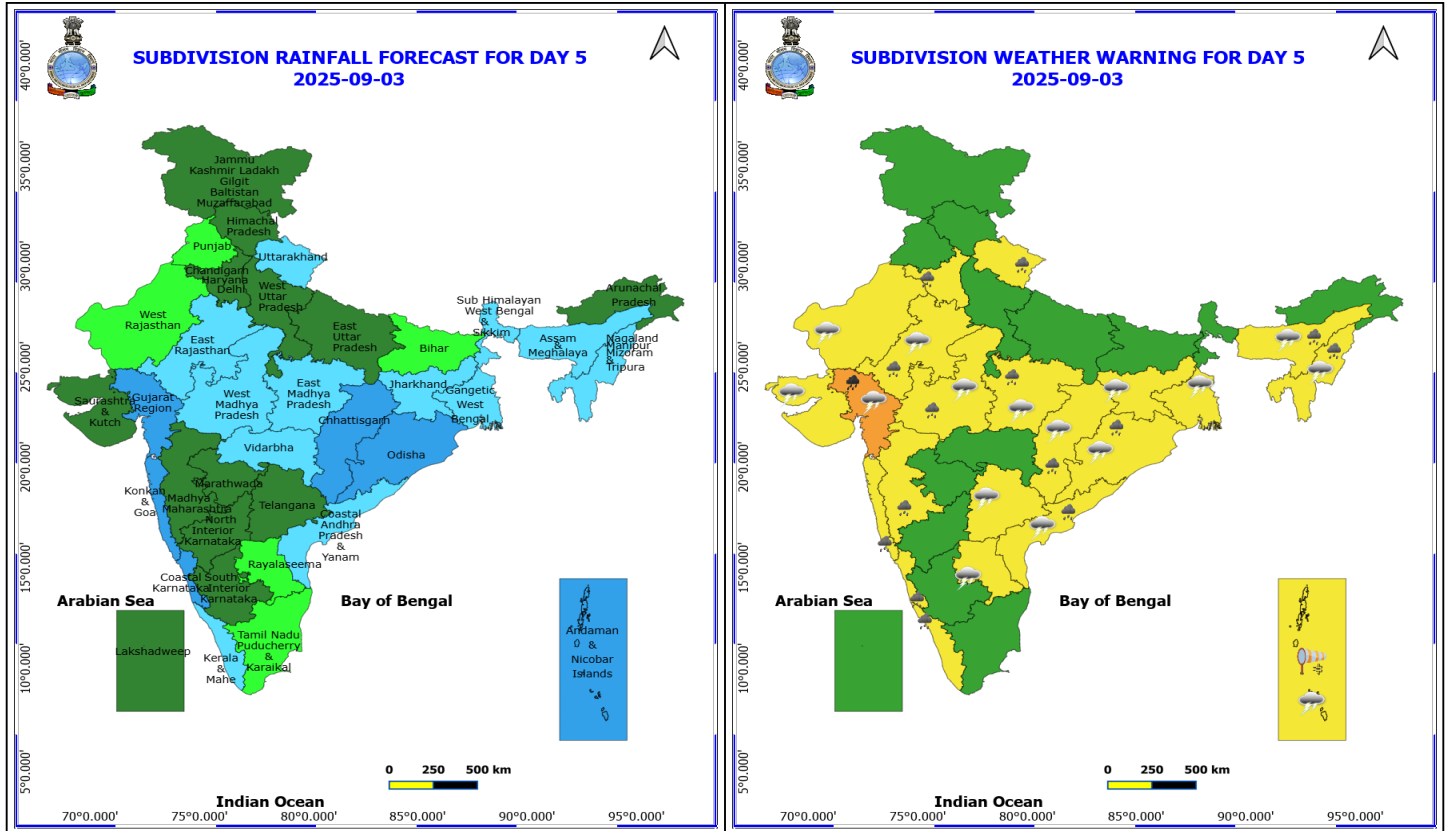
Squally weather with wind speed reaching 40 - 50 kmph gusting to 60 kmph likely to prevail along and off south Gujarat, Konkan, Goa coasts & adjoining sea areas, over most parts of eastcentral Arabian Sea, many parts of southeast Arabian Sea, along and off north Andhra Pradesh coast, over most parts of central, south Bay of Bengal, off Sri Lanka coast, over Gulf of Mannar, Andaman Sea.

**\*Red color warning does not mean "Red Alert" Red color warning means "Take Action"**

Forecast and warning for any day is valid from 0830 hours IST of day till 0830 hours IST of next day

For more details kindly visit <https://mausam.imd.gov.in> or contact 011-2434-4599

(Service to the nation since 1875)



### 3 September (Day 5)

- ❖ **Heavy to Very Heavy Rainfall** likely at isolated places over Gujarat Region.
- ❖ **Heavy Rainfall** likely at isolated places over Assam & Meghalaya, Chhattisgarh, Coastal Andhra Pradesh, Coastal Karnataka, East Rajasthan, Haryana, Chandigarh & Delhi, Kerala & Mahe, Konkan & Goa, Madhya Maharashtra, Madhya Pradesh, Nagaland, Manipur, Mizoram and Tripura, Odisha and Uttarakhand.
- ❖ **Thunderstorm accompanied with lightning & gusty winds(30-40kmph)** likely at isolated places over Andaman & Nicobar Islands, Gangetic West Bengal, Jharkhand, Odisha and Telangana.
- ❖ **Thunderstorm accompanied with Lightning** likely at isolated places over Andhra Pradesh, Assam & Meghalaya, Chhattisgarh, Gujarat State, Madhya Pradesh, Nagaland, Manipur, Mizoram and Tripura and Rajasthan.
- ❖ **Strong Surface Winds** likely at isolated places over Andaman & Nicobar Islands.

Squally wind with speed reaching 45 kmph to 55 kmph gusting to 65 kmph is likely to prevail along and off Somalia, Oman coasts, most parts of westcentral Arabian sea, adjoining & some parts of southwest, eastcentral Arabian Sea.

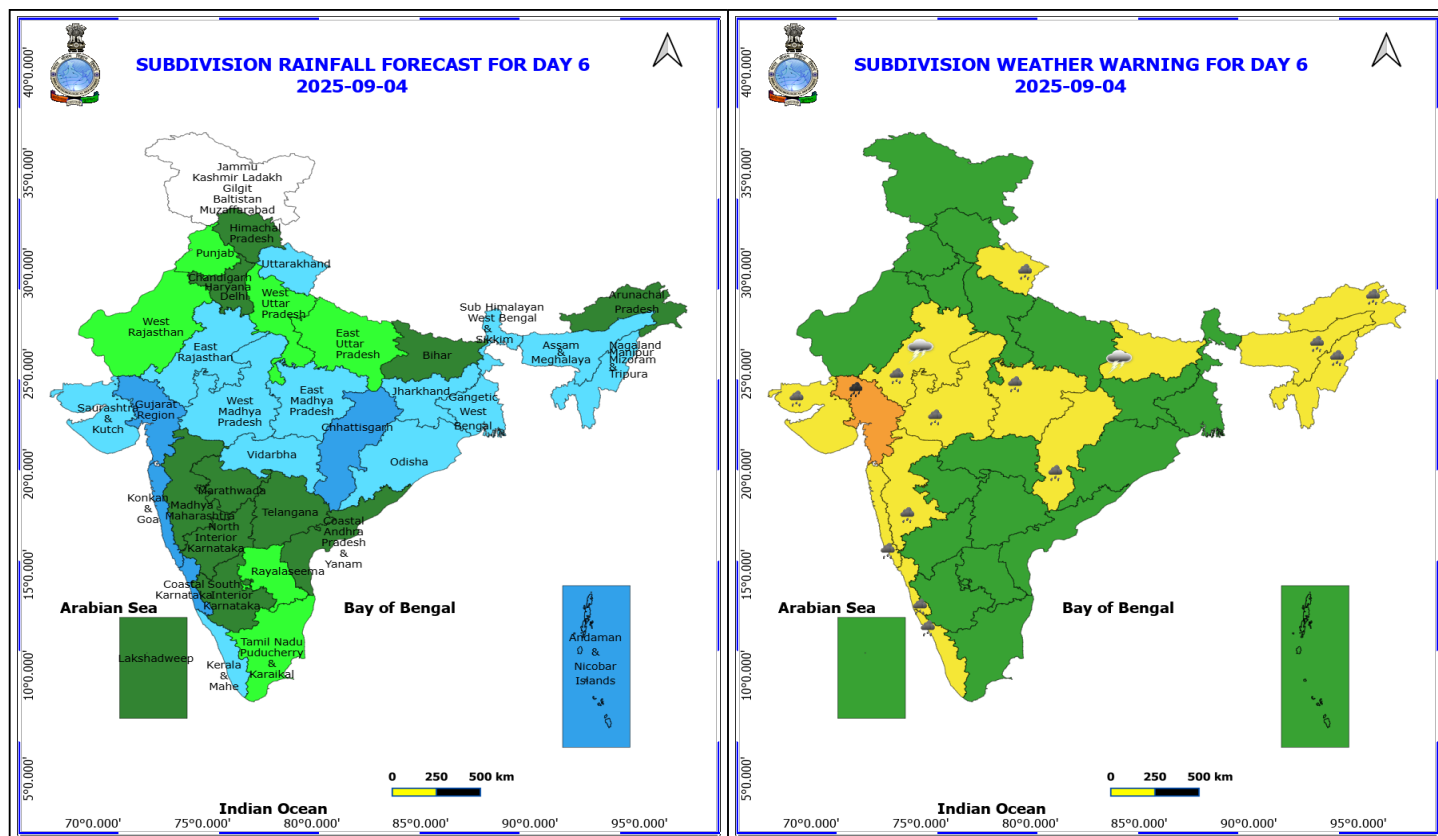
Squally weather with wind speed reaching 40 - 50 kmph gusting to 60 kmph likely to prevail off south south Konkan, Goa coasts & adjoining sea areas, over most parts of eastcentral Arabian Sea, many parts of southeast Arabian Sea & some parts of southwest Arabian Sea, along and off north Andhra Pradesh coast, over most parts of central, south Bay of Bengal, off Sri Lanka coast, over Gulf of Mannar, Andaman Sea.

**\*Red color warning does not mean "Red Alert" Red color warning means "Take Action"**

Forecast and warning for any day is valid from 0830 hours IST of day till 0830 hours IST of next day

For more details kindly visit <https://mausam.imd.gov.in> or contact 011-2434-4599

(Service to the nation since 1875)



#### 4 September (Day 6)

- ❖ **Heavy to Very Heavy Rainfall** likely at isolated places over Gujarat Region.
- ❖ **Heavy Rainfall** likely at isolated places over Arunachal Pradesh, Assam & Meghalaya, Chhattisgarh, Coastal Karnataka, East Rajasthan, Kerala & Mahe, Konkan & Goa, Madhya Maharashtra, Madhya Pradesh, Nagaland, Manipur, Mizoram and Tripura, Saurashtra & Kutch and Uttarakhand.
- ❖ **Thunderstorm accompanied with lightning & gusty winds(30-40kmph)** likely at isolated places over Bihar.
- ❖ **Thunderstorm accompanied with Lightning** likely at isolated places over East Rajasthan.

**No Fishermen Warning**

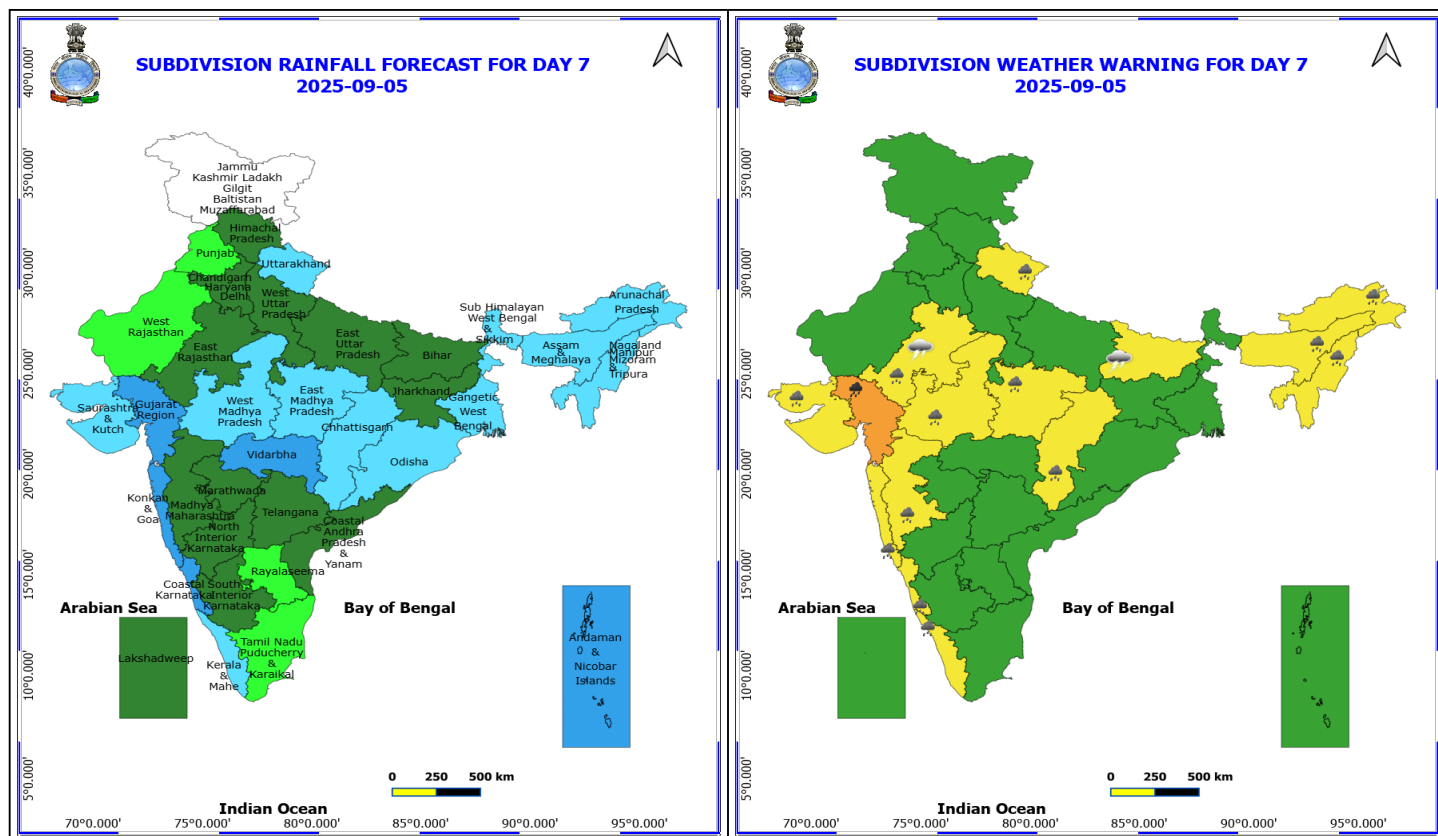
**\*Red color warning does not mean "Red Alert" Red color warning means "Take Action"**

**Forecast and warning for any day is valid from 0830 hours IST of day till 0830 hours IST of next day**

**For more details kindly visit <https://mausam.imd.gov.in> or contact 011-2434-4599**

**(Service to the nation since 1875)**





## 5 September (Day 7)

- ❖ **Heavy to Very Heavy Rainfall** likely at isolated places over Gujarat Region.
- ❖ **Heavy Rainfall** likely at isolated places over Arunachal Pradesh, Assam & Meghalaya, Chhattisgarh, Coastal Karnataka, East Rajasthan, Kerala & Mahe, Konkan & Goa, Madhya Maharashtra, Madhya Pradesh, Nagaland, Manipur, Mizoram and Tripura, Saurashtra & Kutch and Uttarakhand.
- ❖ **Thunderstorm accompanied with lightning & gusty winds(30-40kmph)** likely at isolated places over Bihar.
- ❖ **Thunderstorm accompanied with Lightning** likely at isolated places over East Rajasthan.

**No Fishermen Warning**

**\*Red color warning does not mean "Red Alert" Red color warning means "Take Action"**

**Forecast and warning for any day is valid from 0830 hours IST of day till 0830 hours IST of next day**

**For more details kindly visit <https://mausam.imd.gov.in> or contact 011-2434-4599**

**(Service to the nation since 1875)**

## Flash Flood Warnings

24 hours Outlook for the Flash Flood Risk (FFR) till 1130 IST of 31-08-2025 :

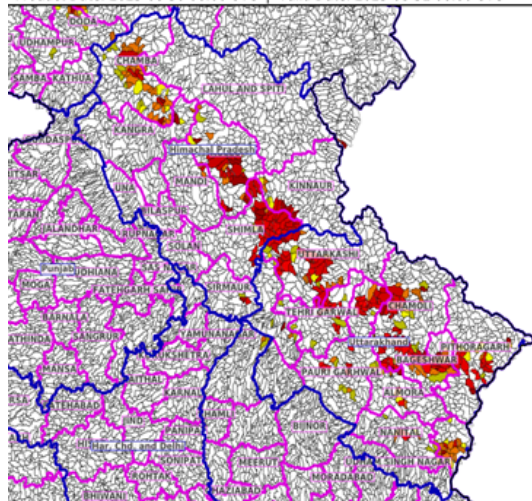
Low to Moderate flash flood risk likely over few watersheds & neighbourhoods of following Met Sub-divisions during next 24 hours.

Himachal Pradesh - Chamba, Kangra, Kinnaur, Kullu, Lahul&Spiti, Mandi, Shimla and Sirmaur districts.

Uttarakhand - Almora, Bageshwar, Chamoli, Champawat, Dehradun, Nanital, Pauri Garhwal, Pithoragarh, Rudraprayag, Tehri Garwal and Uttarkashi districts.

Surface runoff/ Inundation may occur at some fully saturated soils & low-lying areas over Area of Concern (AoC) as shown in map due to expected rainfall occurrence in next 24 hours.

Product: WRF FFR | Timescale: 24-hr | Region: "INDIA"  
Product Date: 2025-08-30 06:00 UTC | Valid Date: 2025-08-31 06:00 UTC



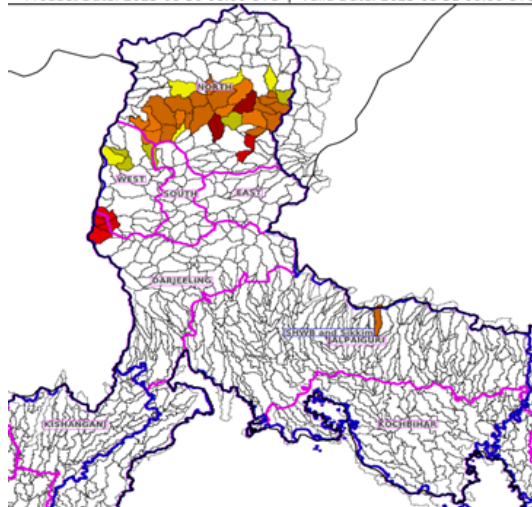
24 hours Outlook for the Flash Flood Risk (FFR) till 1130 IST of 31-08-2025 :

Low to Moderate flash flood risk likely over few watersheds & neighbourhoods of following Met Sub-divisions during next 24 hours.

Sub-Himalayan West Bengal & Sikkim - North Sikkim, South Sikkim, West Sikkim, Darjeeling and Jalpaiguri districts.

Surface runoff/ Inundation may occur at some fully saturated soils & low-lying areas over Area of Concern (AoC) as shown in map due to expected rainfall occurrence in next 24 hours.

Product: NCUM FFR | Timescale: 24-hr | Region: "INDIA"  
Product Date: 2025-08-30 06:00 UTC | Valid Date: 2025-08-31 06:00 UTC



**\*Red color warning does not mean "Red Alert" Red color warning means "Take Action"**

Forecast and warning for any day is valid from 0830 hours IST of day till 0830 hours IST of next day

For more details kindly visit <https://mausam.imd.gov.in> or contact 011-2434-4599

(Service to the nation since 1875)



# Table-1

## 7 Days Rainfall Forecast

S.No.	Subdivision	30- Aug	31- Aug	1- Sep	2- Sep	3- Sep	4- Sep	5- Sep
		Day 1	Day 2	Day 3	Day 4	Day 5	Day 6	Day 7
1	ANDAMAN & NICOBAR ISLANDS	WS	WS	WS	WS	WS	WS	WS
2	ARUNACHAL PRADESH	WS	SCT	SCT	SCT	SCT	SCT	FWS
3	ASSAM & MEHGHALAYA	FWS	SCT	SCT	FWS	FWS	FWS	FWS
4	N. M. M. & T.	FWS	SCT	SCT	SCT	FWS	FWS	FWS
5	S.H. WEST BENGAL & SIKKIM	WS	FWS	FWS	FWS	FWS	FWS	FWS
6	GANGETIC WEST BENGAL	FWS	SCT	SCT	FWS	FWS	FWS	FWS
7	ODISHA	FWS	FWS	WS	WS	WS	FWS	FWS
8	JHARKHAND	SCT	FWS	SCT	FWS	FWS	FWS	SCT
9	BIHAR	SCT	SCT	ISOL	ISOL	ISOL	SCT	SCT
10	EAST UTTAR PRADESH	SCT	SCT	WS	FWS	SCT	ISOL	SCT
11	WEST UTTAR PRADESH	SCT	FWS	WS	FWS	SCT	ISOL	SCT
12	UTTARAKHAND	WS	WS	WS	WS	FWS	FWS	FWS
13	HARYANA, CHD & DELHI	SCT	FWS	FWS	FWS	SCT	SCT	SCT
14	PUNJAB	FWS	FWS	FWS	SCT	ISOL	ISOL	ISOL
15	HIMACHAL PRADESH	WS	WS	WS	FWS	SCT	SCT	SCT
16	JAMMU AND KASHMIR AND LADAKH	FWS	FWS	WS	FWS	SCT	DRY	DRY
17	WEST RAJASTHAN	FWS	FWS	SCT	SCT	ISOL	ISOL	ISOL
18	EAST RAJASTHAN	FWS	FWS	FWS	FWS	FWS	FWS	SCT
19	WEST MADHYA PRADESH	WS	WS	WS	WS	FWS	FWS	FWS
20	EAST MADHYA PRADESH	FWS	WS	WS	WS	FWS	FWS	FWS
21	GUJRAT REGION	WS	WS	WS	WS	WS	WS	WS
22	SAURASHTRA & KUTCH	FWS	SCT	SCT	SCT	SCT	FWS	FWS
23	KONKAN & GOA	WS	WS	WS	WS	WS	WS	WS
24	MADHYA MAHARASHTRA	FWS	SCT	SCT	SCT	SCT	SCT	SCT
25	MARATHWADA	FWS	SCT	ISOL	ISOL	SCT	SCT	SCT
26	VIDARBHA	FWS	FWS	FWS	FWS	FWS	FWS	WS
27	CHATTISGARH	SCT	FWS	FWS	WS	WS	WS	FWS
28	COASTAL ANDHRA PRADESH	SCT	SCT	FWS	FWS	FWS	SCT	SCT
29	TELANGANA	SCT	SCT	SCT	SCT	SCT	SCT	SCT
30	RAYALASEEMA	ISOL	ISOL	ISOL	ISOL	ISOL	ISOL	ISOL
31	TAMILNADU & PUDUCHERRY	ISOL	ISOL	ISOL	ISOL	ISOL	ISOL	ISOL
32	COSTAL KARNATAKA	WS	WS	WS	WS	WS	WS	WS
33	NORTH INTERIOR KARNATAKA	FWS	SCT	SCT	SCT	SCT	SCT	SCT
34	SOUTH INTERIOR KARNATAKA	SCT	SCT	SCT	SCT	SCT	SCT	SCT
35	KERALA	WS	FWS	SCT	SCT	FWS	FWS	FWS
36	LAKSHDWEEP	FWS	SCT	SCT	SCT	SCT	SCT	SCT

Legend	Category	%Stations
WS	Widespread/Most Places	76-100
FWS	Fairly Widespread/Many Places	51-75
SCT	Scattered/ A Few Places	26-50
ISOL	Isolated Places	1-25
DRY	No Rain	0

\*Red color warning does not mean "Red Alert" Red color warning means "Take Action"

Forecast and warning for any day is valid from 0830 hours IST of day till 0830 hours IST of next day

For more details kindly visit <https://mausam.imd.gov.in> or contact 011-2434-4599

(Service to the nation since 1875)

Fig. 1: Maximum Temperatures Dated 2025-08-30

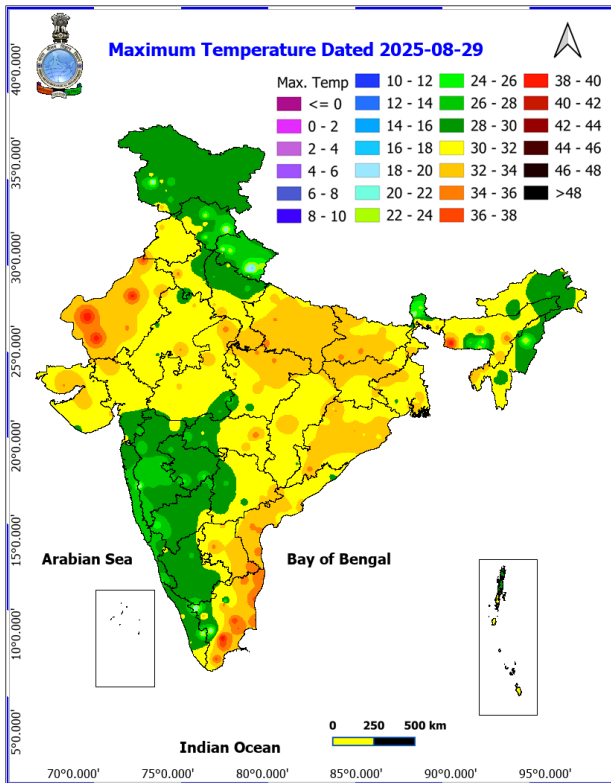


Fig. 2: Departure of Maximum Temp. Dated 2025-08-30

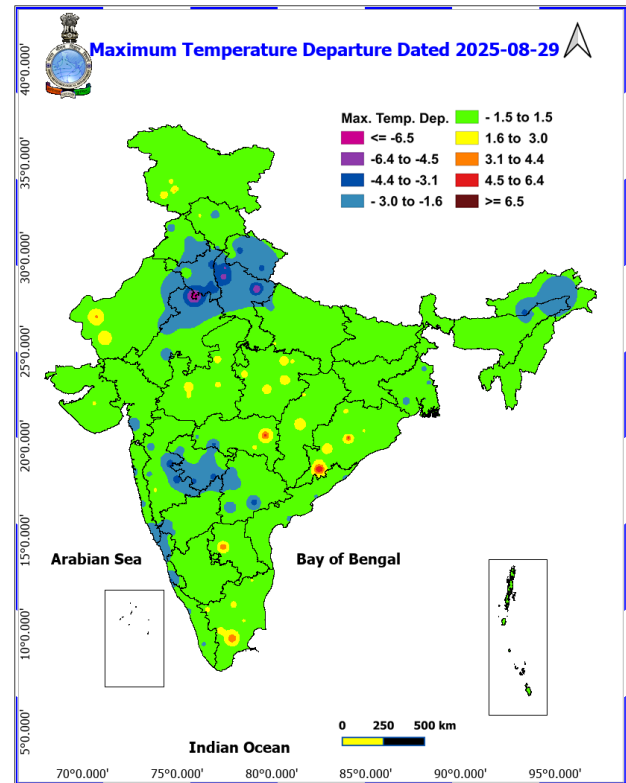


Fig. 3: Minimum Temperatures Dated 2025-08-30

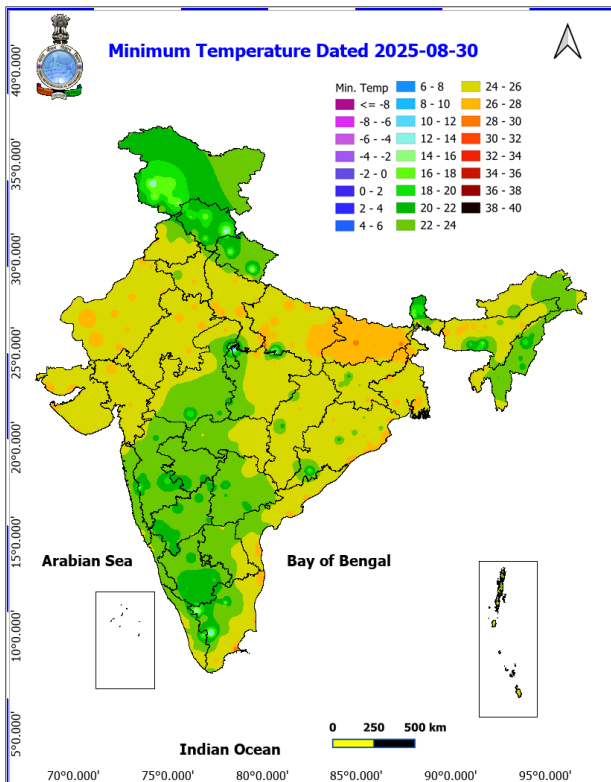
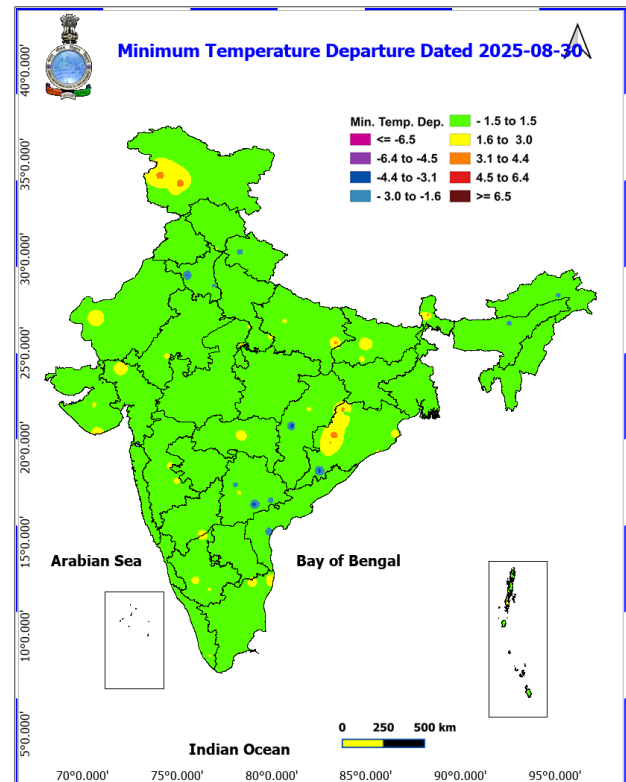
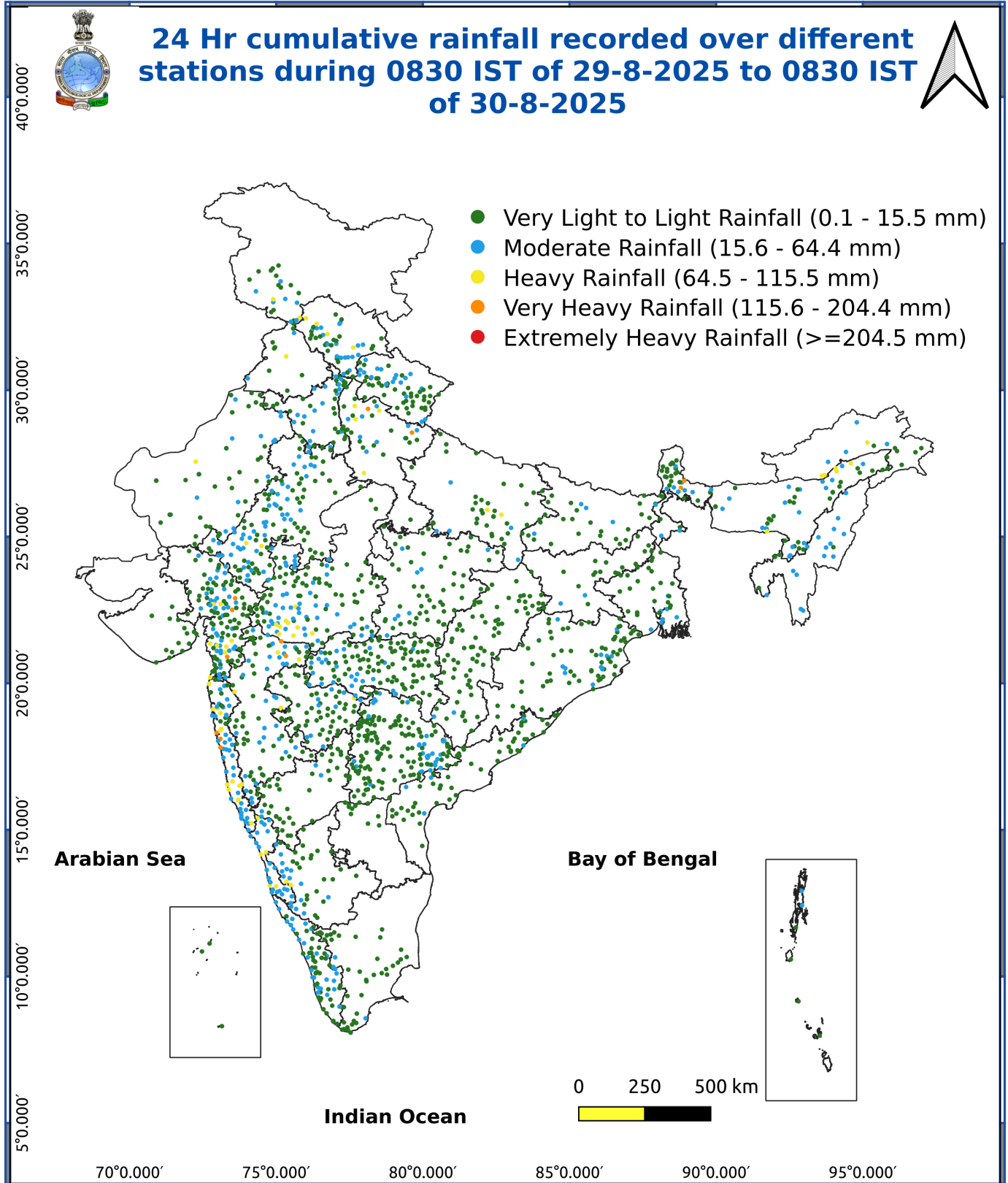


Fig. 4: Departure of Minimum Temp. Dated 2025-08-30







\*Red color warning does not mean "Red Alert" Red color warning means "Take Action"

Forecast and warning for any day is valid from 0830 hours IST of day till 0830 hours IST of next day

For more details kindly visit <https://mausam.imd.gov.in> or contact 011-2434-4599

(Service to the nation since 1875)



### Impact & Action Suggested due to

- **Isolated very heavy rainfall** very likely over Himachal Pradesh on 30<sup>th</sup> & 31<sup>st</sup>; Uttarakhand during 30<sup>th</sup> August-01<sup>st</sup> September; Jammu, Punjab on 30<sup>th</sup>; East Rajasthan on 31<sup>st</sup> August and Uttar Pradesh on 01<sup>st</sup> September; Konkan, Ghat areas of Madhya Maharashtra on 30<sup>th</sup> August, West Madhya Pradesh, Sub-Himalayan West Bengal, Arunachal Pradesh on 30<sup>th</sup> August; Gujarat Region on 30<sup>th</sup> August & during 03<sup>rd</sup>-05<sup>th</sup> September.

### Impact Expected

- Localized Flooding of roads, water logging in low lying areas and closure of underpasses mainly in urban areas of the above region.
- Occasional reduction in visibility due to heavy rainfall.
- Disruption of traffic in major cities due to water logging in roads leading to increased travel time.
- Minor damage to kutcha roads.
- Possibilities of damage to vulnerable structure.
- Localized Landslides/Mudslides/landslips/mudslips/landsinks/mudsinks.
- Damage to horticulture and standing crops in some areas due to inundation.
- It may lead to riverine flooding in some river catchments (for riverine flooding please visit Web page of CWC)

### Action Suggested

- Check for traffic congestion on your route before leaving for your destination.
- Follow any traffic advisories that are issued in this regard.
- Avoid going to areas that face the water logging problems often.
- Avoid staying in vulnerable structure.

### Agromet advisories for various parts of the country

#### Agromet advisories for likely impact of Heavy / Heavy to Very Heavy Rainfall

(Based on the IBF and advisories issued by different AMFUs)

- In **Jammu and Kashmir**, make arrangements to drain out excess water from rice, maize, green gram and black gram fields in **Sub Tropical Zone** and maize, *kharif* pulses, rice and vegetables in **Intermediate Zone**.
- In **Himachal Pradesh**, maintain proper drainage channels in ginger, turmeric and maize fields in **Mid Hills Sub Humid Zone**; rice, maize and vegetable fields in **Sub Montane and Low Hills Sub Tropical Zone** and rajmash, potato, barley and vegetable fields in **High Hill Temperate Dry Zone**. In **High Hills Sub Temperate Wet Zone**, postpone transplanting of cabbage and cauliflower. Cover the vegetable nursery and crop with ploy sheet and make proper drainage channels in fields of maize, finger millet and vegetables to avoid water stagnation.
- In **Uttarakhand**, ensure drainage of excess water from the fields of green gram, black gram, barnyard millet and finger millet in **Sub Humid Sub Tropic Zone** and sugarcane, black gram, green gram, soybean and maize in **Bhabar and Tarai Zone**. In **Hill Zone**, postpone sowing of vegetable pea & radish and provide proper drainage in fields of finger millet, kidney beans and vegetable crops.
- In **Punjab**, maintain proper drainage in sugarcane, green gram and chilli fields in **Undulating Plain Zone** and green gram and soybean fields in **Sub Montane Undulating Zone**.
- In **Haryana**, make arrangements to drain out excess water from fields of sugarcane, cotton, maize, pearl millet and vegetables in **Eastern Zone**.
- In **Maharashtra**, make arrangements to drain out excess water from fields of rice, finger millet, turmeric, groundnut, vegetables and fruit orchards in **Konkan**; rice, maize, groundnut, soybean, vegetable fields and fruit orchards in **ghat areas** of **Madhya Maharashtra** and cotton, pigeon pea, soybean, vegetables and fruit orchards in **Vidarbha**.

\*Red color warning does not mean "Red Alert" Red color warning means "Take Action"

Forecast and warning for any day is valid from 0830 hours IST of day till 0830 hours IST of next day

For more details kindly visit <https://mausam.imd.gov.in> or contact 011-2434-4599

(Service to the nation since 1875)

- In **Gujarat**, make arrangements to drain out excess rain water from fields of rice, sugarcane, okra, tuber crops and vegetables in **South Gujarat Heavy Rainfall Zone**; from standing crops like cotton, sugarcane, pigeon pea, banana and mango in **South Gujarat Zone** and rice, pearl millet, pigeon pea, cotton, soybean, maize and castor in **Middle Gujarat Zone**
- In **Madhya Pradesh**, make arrangements to drain excess rainwater in the fields of maize, soybean, cotton, black gram and vegetables through the field drainage channels in **Jhabua Hills Zone**.
- In **Karnataka**, provide adequate drainage facilities in rice fields and plantations of arecanut and banana in **Coastal Zone** and rice, maize, cotton, ginger fields and plantations of arecanut in **Hill Zone**.
- In **Arunachal Pradesh**, ensure proper drainage in fields of rice, soybean, finger millet, maize and banana orchard

#### Livestock / Fishery

- Keep the animals inside the shed during heavy rainfall and provide them balanced feed.
- Store feed and fodder in a safe place to prevent spoilage.
- Construct an outlet with proper netting around the ponds to drain out excess water, thereby preventing fish from escaping in case of overflow.

#### Agromet advisories for likely impact of Thunderstorm / Gusty Winds / Squally Winds

(Based on the IBF and advisories issued by different AMFUs)

- Provide mechanical support to horticultural crops and staking or support to vegetables and young fruit plants / fruit-bearing plants to avoid lodging due to strong winds.

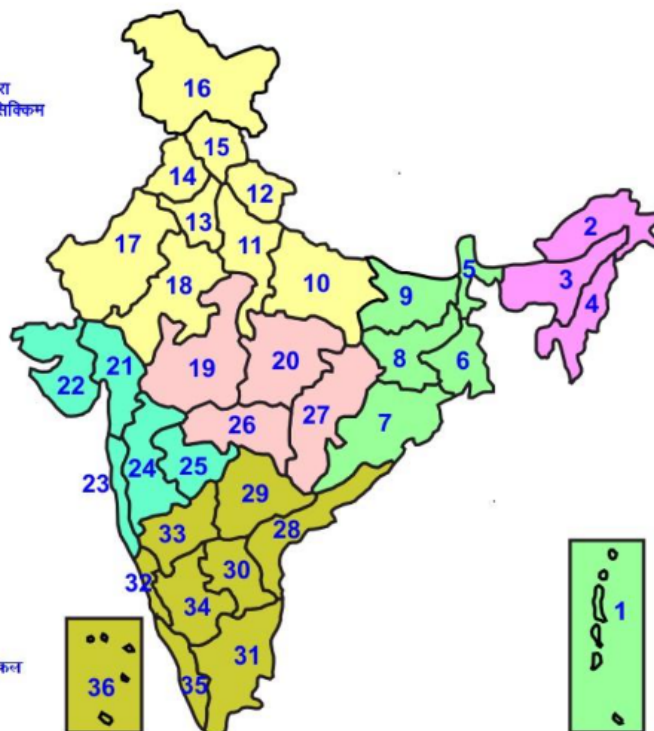
#### Legends & abbreviations:

##### Region wise classification of meteorological Sub-Divisions:

- **Northwest India:** Western Himalayan Region (Jammu-Kashmir-Ladakh-Gilgit-Baltistan-Muzaffarabad, Himachal Pradesh and Uttarakhand); Punjab, Haryana-Chandigarh-Delhi; West Uttar Pradesh, East Uttar Pradesh, West Rajasthan and East Rajasthan.
- **Central India:** West Madhya Pradesh, East Madhya Pradesh, Vidarbha and Chhattisgarh.
- **East India:** Bihar, Jharkhand, Sub-Himalayan West Bengal & Sikkim; Gangetic West Bengal, Odisha and Andaman & Nicobar Islands.
- **Northeast India:** Arunachal Pradesh, Assam & Meghalaya and Nagaland, Manipur, Mizoram & Tripura.
- **West India:** Gujarat Region, Saurashtra & Kutch, Konkan & Goa, Madhya Maharashtra and Marathawada.
- **South India:** Coastal Andhra Pradesh & Yanam, Telangana, Rayalaseema, Coastal Karnataka, North Interior Karnataka, South Interior Karnataka, Kerala & Mahe, Tamil Nadu, Puducherry & Karaikal and Lakshadweep.

## LEGENDS

- 1 अंडमान और निकोबार द्वीप समुह
- 2 अरुणाचल प्रदेश
- 3 असम और मेघालय
- 4 नागालैंड मनीपुर मीजोरम और त्रिपुरा
- 5 उप हिमालय पश्चिम बंगाल एवं सिक्किम
- 6 पश्चिम बंगाल
- 7 ओडिसा
- 8 झारखंड
- 9 बिहार
- 10 पूर्वी उत्तर प्रदेश
- 11 पश्चिम उत्तर प्रदेश
- 12 उत्तराखंड
- 13 हरियाणा चंडीगढ़ एवं दिल्ली
- 14 पंजाब
- 15 हिमाचल प्रदेश
- 16 जम्मू एवं कश्मीर एवं लद्दाख
- 17 पश्चिम राजस्थान
- 18 पूर्वी राजस्थान
- 19 पश्चिम मध्य प्रदेश
- 20 पूर्वी मध्य प्रदेश
- 21 गुजरात क्षेत्र
- 22 सौराष्ट्र एवं कच्छ
- 23 कोंकण एवं गोवा
- 24 मध्य महाराष्ट्र
- 25 मराठावाड़ा
- 26 विदर्भ
- 27 छत्तीसगढ़
- 28 तटीय आंध्र प्रदेश एवं यनम
- 29 तेलंगाना
- 30 रायलसीमा
- 31 तमिलनाडु, पुदुचेरी एवं कराईकल
- 32 तटिय कर्नाटक
- 33 आंतरिक उत्तरी कर्नाटक
- 34 आंतरिक दक्षिणी कर्नाटक
- 35 केरल एवं माहे
- 36 लक्षद्वीप



1. Andaman & Nicobar Islands
2. Arunachal Pradesh
3. Assam & Meghalaya
4. Nagaland, Manipur, Mizoram & Tripura
5. Sub-Himalayan West Bengal & Sikkim
6. Gangetic West Bengal
7. Orissa
8. Jharkhand
9. Bihar
10. East Uttar Pradesh
11. West Uttar Pradesh
12. Uttarakhand
13. Haryana, Chd & Delhi
14. Punjab
15. Himachal Pradesh
16. Jammu & Kashmir and Ladakh
17. West Rajasthan
18. East Rajasthan
19. West Madhya Pradesh
20. East Madhya Pradesh
21. Gujarat
22. Saurashtra
23. Konkan & Goa
24. Madhya Maharashtra
25. Marathawada
26. Vidharbha
27. Chhattisgarh
28. Coastal Andhra Pradesh & Yanam
29. Telangana
30. Rayalaseema
31. Tamilnadu, Puducherry & Karaikal
32. Coastal Karnataka
33. North Interior Karnataka
34. South Interior Karnataka
35. Kerala & Mahe
36. Lakshadweep

## SPATIAL DISTRIBUTION (% of Stations reporting)




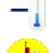













% Stations	Category	% Stations	Category
76-100	Widespread (WS/Most Places)	26-50	Scattered (SCT/ A Few Places)
51-75	Fairly Widespread (FWS/ Many Places)	1-25	Isolated (ISOL)

## Subdivision Colour

- NO WARNING
- WATCH (BE UPDATED)
- ALERT (BE PREPARED TO TAKE ACTION)
- WARNING (TAKE ACTION)

## Probabilistic Forecast

Terms	Probability of Occurrence (%)
Unlikely	< 25
Likely	25 - 50
Very Likely	50 - 75
Most Likely	> 75

-  Heavy Rain
-  Very Heavy Rain
-  Extremely Heavy Rain
-  Heavy Snow
-  Thunderstorm & Lightning
-  Hailstorm
-  Dust Storm
-  Dust Raising Winds
-  Strong surface winds
-  Heat Wave
-  Hot Day
-  Warm Night
-  Cold Wave
-  Cold Day
-  Ground Frost
-  FOG Fog
-  Hot & Humid

\*Red color warning does not mean "Red Alert" Red color warning means "Take Action"

Forecast and warning for any day is valid from 0830 hours IST of day till 0830 hours IST of next day

For more details kindly visit <https://mausam.imd.gov.in> or contact 011-2434-4599

(Service to the nation since 1875)



## LEGENDS

### WARNING

<b>WARNING (TAKE ACTION)</b>
<b>ALERT (BE PREPARED)</b>
<b>WATCH (BE UPDATED)</b>
<b>NO WARNING (NO ACTION)</b>

### Probabilistic Forecast

Terms	Probability of Occurrence (%)
Unlikely	< 25
Likely	25 - 50
Very Likely	50 - 75
Most Likely	> 75



Heavy: 64.5 to 115.5 mm/cm \*  
Very Heavy: 115.6 to 204.4 mm/cm \*  
Extremely Heavy: > 204.4 mm/cm \*



When maximum temperature of a station reaches  $\geq 40^{\circ}\text{C}$  for plains and  $\geq 30^{\circ}\text{C}$  for hilly regions  
(a) Based on Departure from normal

Heat Wave: Maximum Temperature Departure from normal  $4.5^{\circ}\text{C}$  to  $6.4^{\circ}\text{C}$ .  
Severe Heat Wave: Maximum Temperature Departure from normal  $\geq 6.5^{\circ}\text{C}$

(b). Based on Actual maximum temperature

Heat Wave: When actual maximum temperature  $\geq 45^{\circ}\text{C}$ .  
Severe Heat Wave: When actual maximum temperature  $\geq 47^{\circ}\text{C}$

(c). Criteria for heat wave for coastal stations

When maximum temperature departure is  $> 4.5^{\circ}\text{C}$  from normal. Heat Wave may be described provided maximum temperature  $\geq 37^{\circ}\text{C}$



When maximum temperature remains  $40^{\circ}\text{C}$

Warm Night: When minimum temperature departure  $4.5^{\circ}\text{C}$  to  $6.4^{\circ}\text{C}$ .  
Severe Warm Night: When minimum temperature departure  $> 6.4^{\circ}\text{C}$ .



When minimum temperature of a station  $\leq 10^{\circ}\text{C}$  for plains and  $\leq 0^{\circ}\text{C}$  for hilly regions.

(a). Based on departure

Cold Wave: Minimum Temperature Departure from normal  $-4.5^{\circ}\text{C}$  to  $-6.4^{\circ}\text{C}$ .  
Severe Cold Wave: Minimum Temperature Departure from normal  $\leq -6.5^{\circ}\text{C}$

(b) Based on actual Minimum Temperature (for Plains only)

Cold Wave: When Minimum Temperature is  $\leq 4.0^{\circ}\text{C}$   
Severe Cold Wave: When Minimum Temperature is  $\leq 2.0^{\circ}\text{C}$

(c) For Coastal Stations

When Minimum Temperature departure is  $\leq -4.5^{\circ}\text{C}$  & actual Minimum Temperature is  $\leq 15^{\circ}\text{C}$



When minimum temperature of a station  $\leq 10^{\circ}\text{C}$  for plains and  $\leq 0^{\circ}\text{C}$  for hilly regions  
Based on departure

Cold Day: Maximum Temperature Departure from normal  $-4.5^{\circ}\text{C}$  to  $-6.4^{\circ}\text{C}$ .  
Severe Cold Day: Maximum Temperature Departure from normal  $\leq -6.5^{\circ}\text{C}$



Phenomenon of small droplets suspended in air and the horizontal visibility  $< 1\text{km}$

Moderate Fog: When the visibility between 500-200 metres  
Dense Fog: when the visibility between 50-200 metres  
Very Dense Fog: when the visibility  $< 50$  metres



Sudden electrical discharges manifested by a flash of light (Lightning) and a sharp rumbling sound (thunder)



An ensemble of particles of dust or sand energetically lifted to great heights by a strong and turbulent wind.



Ice deposits on ground

Air temperature  $\leq 4^{\circ}\text{C}$  (over Plains)



A strong wind that rises suddenly, lasts for at least 1 minute.

Moderate: Wind speed 52-61 kmph  
Severe: Wind speed 62-87 kmph  
Very Severe: Wind speed  $> 87$  kmph



Effect of various waves in the sea over specific area

Rough to very rough: Wind speed 41-62 kmph (22-33 knots) & Wave height 2.5-6 metre  
High to very high: Wind speed 63-117 kmph (34-63 knots) & Wave height 6-14 metre  
Phenomenal: Wind speed  $> 117$  kmph ( $> 63$  knots) & Wave height  $> 14$  metre



Cyclonic Storm: Wind speed 62-87 kmph (34-47 knots)

Severe Cyclonic Storm: Wind speed 88-117 kmph (48-63 knots)  
Very Severe Cyclonic Storm: Wind speed 118-165 kmph (64-89 knots)  
Extremely Severe Cyclonic Storm: Wind speed 166-220 kmph (90-119 knots)  
Super Cyclone Storm: Wind speed  $> 220$  kmph ( $> 119$  knots)

\*Red color warning does not mean "Red Alert" Red color warning means "Take Action"

Forecast and warning for any day is valid from 0830 hours IST of day till 0830 hours IST of next day

For more details kindly visit <https://mausam.imd.gov.in> or contact 011-2434-4599

(Service to the nation since 1875)