

2025-08-12

Time of Issue: 13:36:00 hours IST
(Mid-Day)

ALL INDIA WEATHER SUMMARY AND FORECAST BULLETIN

Significant Weather Features

Weather, Forecast and Warnings :

Northwest India:

- **Extremely heavy rainfall** very likely at isolated places over Uttarakhand on 13th August.
- Isolated **heavy rainfall** likely over Jammu-Kashmirduring 12th-15th; Himachal Pradesh, Uttarakhand during 12th-18th; Haryana, Chandigarh, West Uttar Pradesh during 12th-15th; East Uttar Pradesh during 12th-14th; East Rajasthan during 15th-18th August with **very heavy rainfall** over Jammu, Himachal Pradesh during 12th-14th; Uttarakhand on 12th, during 14th-18th; Uttar Pradesh on 13th & 14th August.
- Light/moderate rainfall at many places accompanied with thunderstorm & lightning likely over Jammu-Kashmir-Ladakh-Gilgit-Baltistan-Muzaffarabad & Uttarakhand during next 7 days.

Northeast India:

- **Extremely heavy rainfall** very likely at isolated places over Assam on 12th August.
- Light/moderate rainfall at many places accompanied with thunderstorm, lightning and isolated **heavy rainfall** likely to continue over Arunachal Pradesh on 12th & 13th; Assam & Meghalaya during 12th-17th, Nagaland, Manipur, Mizoram & Tripura during 12th-15th August with **very heavy rainfall** over Arunachal Pradesh on 12th August.
- Light/moderate rainfall at many places accompanied with thunderstorm & lightning likely during next 2 days.

South Peninsular India:

- **Extremely heavy rainfall** very likely at isolated places over Telangana on 13th & 14th August.
- Isolated **heavy rainfall** likely over Karnataka during 14th-18th; Rayalaseema during 12th-14th; Coastal Andhra Pradesh & Yanam, Telangana during 12th-18th; Tamil Nadu, Puducherry & Karaikal on 12th & 13th, Kerala on 12th, 13th, 17th & 18th August with isolated **very heavy rainfall over Coastal Andhra Pradesh & Yanam on 13th & 14th, Rayalaseema on 13th; Telangana during 13th-16th August.**
- Strong surface winds (speed reaching 40-50 kmph) very likely over South Peninsular India during next 2 days.
- Light to moderate rainfall at most/many places accompanied with thunderstorm & lightning likely over Rayalaseema, Coastal Andhra Pradesh & Yanam and Telangana during next 5 days.

East & Central India:

- **Extremely heavy rainfall** very likely at isolated places over Sub-Himalayan West Bengal & Sikkim on 12th August.
- Isolated **heavy rainfall** likely over West Madhya Pradesh, Vidarbha; Chhattisgarh during 12th-18th; Andaman & Nicobar Islands on 12th; Sub-Himalayan West Bengal & Sikkim on 14th, 17th & 18th; Bihar on 4th; Odisha on 12th & 16th August with isolated **very heavy rainfall over West Madhya Pradesh on 18th; Vidarbha, Chhattisgarh on 13th, 14th, 17th & 18th; Sub-Himalayan West Bengal & Sikkim on 13th; Bihar on 12th & 13th and Odisha during 13th-15th August.**
- Light to moderate rainfall at most/many places accompanied with thunderstorm & lightning likely over the region during next 5 days.

West India:

- Isolated **heavy rainfall** likely over Madhya Maharashtra during 13th-18th; Konkan & Goa during 12th-18th; Marathwada during 13th-16th; Gujarat Region during 16th-18th; Saurashtra & Kutch on 18th August with isolated **very heavy rainfall over Konkan & Goa, ghat areas of Madhya Maharashtra during 15th-18th August.**
- Light to moderate rainfall at many/some places very likely over the region during next 5 days.

*Red color warning does not mean "Red Alert" Red color warning means "Take Action"

Forecast and warning for any day is valid from 0830 hours IST of day till 0830 hours IST of next day

For more details kindly visit <https://mausam.imd.gov.in> or contact 011-2434-4599

(Service to the nation since 1875)



Main Weather Observations:

❖ **Rainfall distribution** (from 0830 hours IST of yesterday to 0830 hours IST of today): **at most places** over Andaman & Nicobar Islands, Arunachal Pradesh, Assam & Meghalaya, Sub Himalayan West Bengal & Sikkim, Uttarakhand, Himachal Pradesh, Konkan & Goa, Coastal Karnataka and Kerala & Mahe; **at many places** over East Uttar Pradesh, West Uttar Pradesh, Haryana-Chandigarh-Delhi, Punjab, East Madhya Pradesh, Telangana, Rayalaseema, North Interior Karnataka, South Interior Karnataka and Lakshadweep; **at a few places** over Nagaland, Manipur, Mizoram & Tripura, Gangetic West Bengal, Bihar, Gujarat Region, Saurashtra & Kutch, Madhya Maharashtra, Marathwada, Vidarbha, Chhattisgarh and Coastal Andhra Pradesh & Yanam; **at isolated places** over Odisha, Jharkhand, Jammu-KashmirLadakh-Gilgit-Baltistan-Muzaffarabad, West Rajasthan, East Rajasthan, West Madhya Pradesh and Tamil Nadu, Puducherry & Karaikal.

❖ **Significant rainfall recorded(in cm)** (from 0830 hours IST of yesterday to 0830 hours IST of today): **Jammu-KashmirLadakh-Gilgit-Baltistan-Muzaffarabad**: Reasi ARG (dist Reasi) 28; Reasi Kvk AWS (dist Reasi) 23; Kathua (dist Kathua), Katra (dist Reasi) 20 Each; Udhampur(IAF) (dist Udhampur) 17; Kathua ARG (dist Kathua) 15; Jammu AWS (dist Jammu), Samba AWS (dist Samba) 10 Each; Jammu (dist Jammu) 9; **Punjab**: Madhopur (dist Pathankot) 20; Malikpur (dist Pathankot) 18; Pathankot ARG (dist Pathankot) 16; Phangota (dist Pathankot) 14; Shahpur Kandi (dist Pathankot) 10; Kvk Pathankot AWS (dist Pathankot) 7; **Telangana**: Sangem (dist Warangal) 18; Kodakandla (dist Jangaon) 13; Jajireddigudem (dist Suryapet) 12; Kusumanchi (dist Khammam) 10; Narsampet (dist Warangal), Zaffergadh (dist Jangaon), Parvathagiri (dist Warangal) 9 Each; Chennaraopet (dist Warangal), Hanamkonda (dist Hanamakonda), Kothaguda (dist Mahabubabad), Aswapuram (dist B. Kothagudem), Noothankal (dist Suryapet) 8 Each; Nalgonda (dist Nalgonda), Pedda Adiserlapalle (dist Nalgonda), Nallabelly (dist Warangal), Manuguru (dist B. Kothagudem) 7 Each; **Himachal Pradesh**: Nagrota Surian (dist Kangra) 18; Guler (dist Kangra) 16; Ghamroor (dist Kangra) 11; Nadaun (dist Hamirpur), Dehra Gopipur (dist Kangra) 8 Each; Palampur (dist Kangra), Jogindarnagar (dist Mandi), Bharari (dist Hamirpur), Kangra AP (dist Kangra), Sujanpur Tira (dist Hamirpur) 7 Each; **East Uttar Pradesh**: Kheri Lakhimpur (dist Kheri) 12; Ayodhya (dist Ayodhya) 11; Nighasan (dist Kheri) 7; **Coastal Andhra Pradesh & Yanam**: Komarada (dist Parvathipuram Manyam) 10; Bapatla (dist Bapatla) 8; Macherla (dist Palnadu) 7; **Sub Himalayan West Bengal & Sikkim**: Palashbari Tea Estate (dist Jalpaiguri) 10; Gyalsing PTO (dist Gyalshing) 9; Namthang (dist Namchi), Siliguri PTO (dist Darjeeling) 8 Each; Mogulkata Tea Estate (dist Jalpaiguri) 7; **Jharkhand**: Purvi Tundi (dist Dhanbad) 10; **Bihar**: Sarmera (dist Nalanda) 10; Kusheswarstan (dist Darbhanga) 7; **Uttarakhand**: Dhanaulti (dist Garhwal Tehri), Mori (dist Uttarkashi) 10 Each; Narendranagar (dist Garhwal Tehri) 9; **West Madhya Pradesh**: Pathari (dist Vidisha) 9; **Gangetic West Bengal**: Tilpara Barrage (dist Birbhum), Kandi (dist Murshidabad) 9 Each; **Chhattisgarh**: Kusmi (dist Balrampur) 8; **Assam & Meghalaya**: Srijangram ARG (dist Bongaigaon) 8; Williamnagar (dist East Garo Hills), Dhemaaji (dist Dhemaaji) 7 Each; **Rayalaseema**: Chinnamandem (dist Annamayya District) 7; **Andaman & Nicobar Islands**: Hut Bay (dist South Andaman) 7; **East Madhya Pradesh**: Amanganj (dist Panna) 7; **Haryana-Chandigarh-Delhi**: Nilokheri (dist Karnal) 7; **Odisha**: Pattamundai (dist Kendrapara) 7.

❖ **Heavy Rainfall observed** (from 0830 hours IST of yesterday to 0830 hours IST of today):**Extremely heavy rain** at isolated places over Jammu-KashmirLadakh-Gilgit-Baltistan-Muzaffarabad. **Heavy to very heavy rain** at isolated places over East Uttar Pradesh, Punjab, Himachal Pradesh, Jammu-KashmirLadakh-Gilgit-Baltistan-Muzaffarabad and Telangana. **Heavy rain** at isolated places over Andaman & Nicobar Islands, Assam & Meghalaya, Sub Himalayan West Bengal & Sikkim, Gangetic West Bengal, Odisha, Jharkhand, Bihar, Uttarakhand, Haryana-Chandigarh-Delhi, West Madhya Pradesh, East Madhya Pradesh, Chhattisgarh, Coastal Andhra Pradesh & Yanam and Rayalaseema.

❖ **Minimum Temperature Departures (as on 12-08-2025): markedly above normal(> 5.1°C)** at few places over West Madhya Pradesh; at isolated places over Assam & Meghalaya, Bihar, East Uttar Pradesh, West Uttar Pradesh, Himachal Pradesh, Jammu-KashmirLadakh-Gilgit-Baltistan-Muzaffarabad and East Madhya Pradesh. **appreciably above normal(3.1°C to 5.0°C)** at isolated places over Sub Himalayan West Bengal & Sikkim, Gangetic West Bengal, Odisha, Gujarat Region and Saurashtra & Kutch. **above normal(1.6°C to 3.0°C)** at few places over Nagaland, Manipur, Mizoram & Tripura, West Rajasthan and East Rajasthan; at isolated places over Punjab, Vidarbha, Chhattisgarh and Tamil Nadu, Puducherry & Karaikal. **near normal(-1.5°C to 1.5°C)** at many places over Uttarakhand, Haryana-Chandigarh-Delhi, Telangana, Rayalaseema and Kerala & Mahe; at most places over Andaman & Nicobar Islands, Jharkhand, Konkan & Goa, Madhya Maharashtra, Marathwada, Coastal Andhra Pradesh & Yanam, Coastal Karnataka, North Interior Karnataka, South Interior Karnataka and Lakshadweep. **The lowest minimum temperature** of 19.0°C is reported at HALFLONG (ASSAM), MATHERAN (MAHARASHTRA), and JEUR (MAHARASHTRA) over

*Red color warning does not mean "Red Alert" Red color warning means "Take Action"

Forecast and warning for any day is valid from 0830 hours IST of day till 0830 hours IST of next day

For more details kindly visit <https://mausam.imd.gov.in> or contact 011-2434-4599

(Service to the nation since 1875)

the Plains of India.

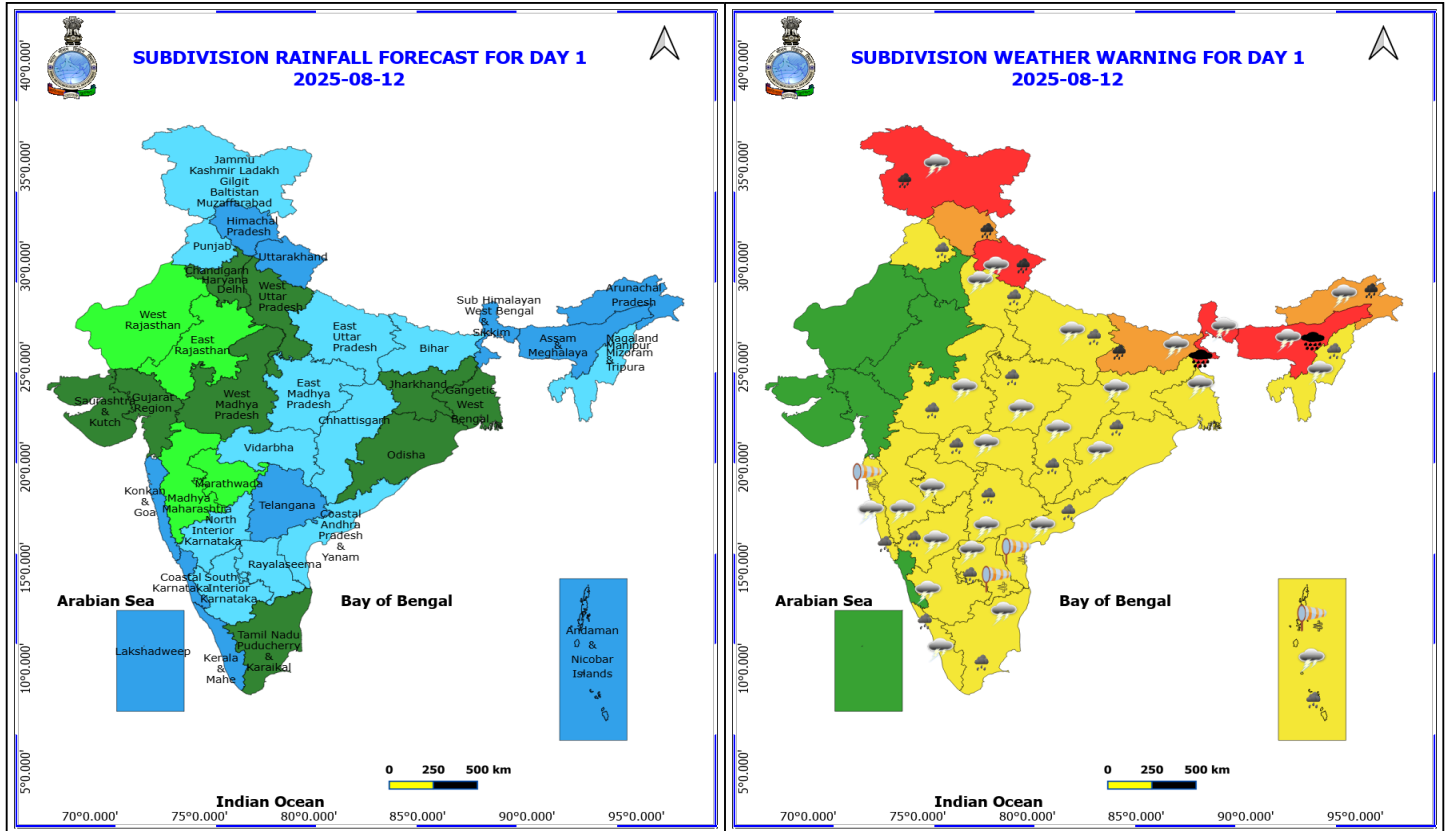
❖ **Maximum Temperature Departures (as on 11-08-2025):** **markedly above normal(> 5.1°C)** at isolated places over Madhya Maharashtra and Chhattisgarh. **appreciably above normal(3.1°C to 5.0°C)** at many places over Gujarat Region and Vidarbha; at few places over Odisha and Jammu-KashmirLadakh-Gilgit-Baltistan-Muzaffarabad; at isolated places over Assam & Meghalaya, Gangetic West Bengal and East Rajasthan. **above normal(1.6°C to 3.0°C)** at few places over Nagaland, Manipur, Mizoram & Tripura, West Rajasthan, East Madhya Pradesh, Konkan & Goa, Coastal Andhra Pradesh & Yanam, Telangana and North Interior Karnataka; at isolated places over Jharkhand, Punjab, Himachal Pradesh, West Madhya Pradesh, Saurashtra & Kutch and Marathwada. **near normal(-1.5°C to 1.5°C)** at many places over Bihar, East Uttar Pradesh, Haryana-Chandigarh-Delhi and Kerala & Mahe; at most places over Sub Himalayan West Bengal & Sikkim, Coastal Karnataka, South Interior Karnataka and Lakshadweep; at few places over Andaman & Nicobar Islands; at isolated places over West Uttar Pradesh and Tamil Nadu, Puducherry & Karaikal. **The highest maximum temperature** of 39.0°C is reported at SRIGANGANAGAR (RAJASTHAN).

Meteorological Analysis (Based on 0830 hours IST)

- The **monsoon trough** at mean sea level continues to pass through Bhatinda, Patiala, Dehradun and thence east-southeastwards to Arunachal Pradesh close to foothills of Himalayas.
- The **upper air cyclonic circulation** over northwest Uttar Pradesh persists and now extends upto 0.9 km above mean sea level.
- The **upper air cyclonic circulation** over northeast Assam extending upto 3.1 km above mean sea level persists.
- A **trough** runs from south Bihar to north Odisha upto 1.5 km above mean sea level.
- An **upper air cyclonic circulation** lay over central parts of Bay of Bengal between 3.1 & 5.8 km above mean sea level. Under its influence a **Low-Pressure area** is likely to form over westcentral & adjoining northwest Bay of Bengal on 13th August, 2025 and become more marked during subsequent 48 hours.
- An **upper air cyclonic circulation** lies over North Interior Karnataka & neighbourhood at 5.8 km above mean sea level.
- An **east-west trough** runs from the cyclonic circulation over central parts of Bay of Bengal to the cyclonic circulation over North Interior Karnataka across west central Bay of Bengal at 5.8 km above mean sea level.
- The **Western Disturbance** as a cyclonic circulation over north Pakistan & adjoining Jammu & Kashmir between 3.1 & 5.8 km above mean sea level persists.
- The **upper air cyclonic circulation** over north Coastal Andhra Pradesh & adjoining Telangana between 3.1 & 5.8 km above mean sea level has become less marked.
- The **upper air cyclonic circulation** over Kutch & neighbourhood at 3.1 km above mean sea level has become less marked.

Weather Outlook for subsequent 3 days

- Scattered to fairly widespread rainfall over most parts of country with isolated Heavy rainfall over the western coast.



12 August (Day 1)

- ❖ **Heavy to Very Heavy Rainfall with isolated Extremely Heavy Rainfall** very likely at isolated places over Assam & Meghalaya and Sub Himalayan West Bengal & Sikkim.
- ❖ **Heavy to Very Heavy Rainfall** very likely at isolated places over Arunachal Pradesh, Bihar, Himachal Pradesh, Jammu-Kashmir-Ladakh-Gilgit-Baltistan-Muzaffarabad and Uttarakhand.
- ❖ **Heavy Rainfall** very likely at isolated places over Andaman & Nicobar Islands, Andhra Pradesh, Chhattisgarh, Kerala & Mahe, Konkan & Goa, Madhya Pradesh, Nagaland, Manipur, Mizoram and Tripura, North Interior Karnataka, Odisha, Punjab, Tamil Nadu Puducherry & Karaikal, Telangana, Uttar Pradesh and Vidarbha.
- ❖ **Thunderstorm accompanied with lightning & gusty winds(40-50kmph)** very likely at isolated places over Andaman & Nicobar Islands and North Interior Karnataka.
- ❖ **Thunderstorm accompanied with lightning & gusty winds(30-40kmph)** very likely at isolated places over Bihar, Jammu-Kashmir-Ladakh-Gilgit-Baltistan-Muzaffarabad, Jharkhand, Odisha, Rayalaseema, South Interior Karnataka, Telangana and West Bengal & Sikkim.
- ❖ **Thunderstorm accompanied with Lightning** very likely at isolated places over Arunachal Pradesh, Assam & Meghalaya, Chhattisgarh, Coastal Andhra Pradesh, Kerala & Mahe, Konkan & Goa, Madhya Pradesh, Maharashtra, Nagaland, Manipur, Mizoram and Tripura, Tamil Nadu Puducherry & Karaikal, Uttar Pradesh and Uttarakhand.
- ❖ **Strong Surface Winds** very likely at isolated places over Andaman & Nicobar Islands, Andhra Pradesh and Konkan & Goa.

Squally wind with speed reaching 45 kmph to 55 kmph gusting to 65 kmph is likely to prevail along and off Somalia, Yemen, Oman coasts, many parts of westcentral Arabian sea & adjoining eastcentral Arabian Sea, few parts of

***Red color warning does not mean "Red Alert" Red color warning means "Take Action"**

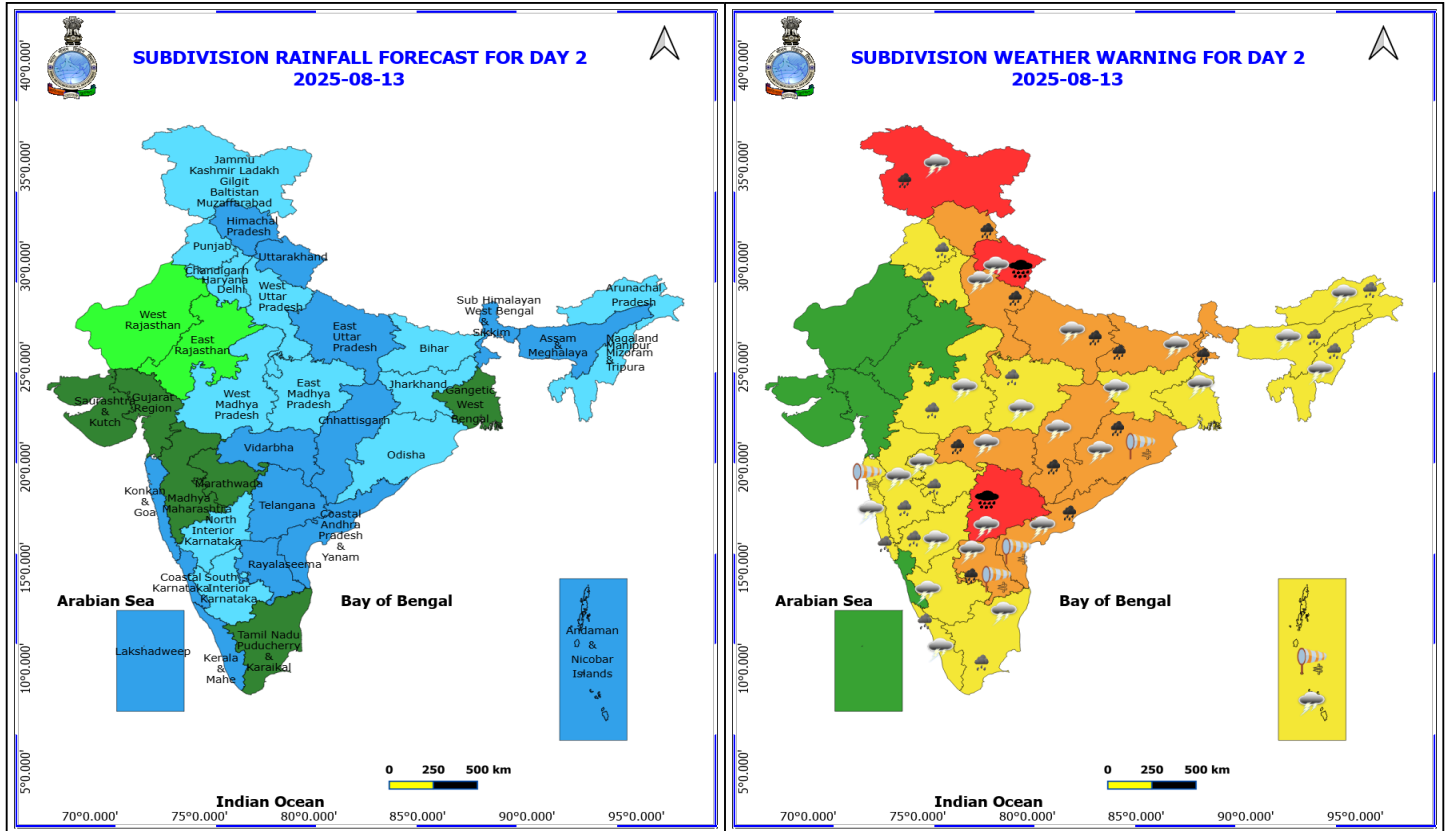
Forecast and warning for any day is valid from 0830 hours IST of day till 0830 hours IST of next day

For more details kindly visit <https://mausam.imd.gov.in> or contact 011-2434-4599

(Service to the nation since 1875)

southwest Arabian Sea, many parts of northwest Arabian sea.

Squally weather with wind speed reaching 40 - 50 kmph gusting to 60 kmph likely to prevail along and off north Gujarat coast & adjoining northeast Arabian Sea, along and off south Konkan & Goa coasts, over Gulf of Mannar and adjoining Comorin area, along and off Sri-Lanka coast, over most parts of south & central Bay of Bengal adjoining North Bay of Bengal and over Andaman sea.



13 August (Day 2)

- ❖ **Heavy to Very Heavy Rainfall with isolated Extremely Heavy Rainfall** very likely at isolated places over Telangana and Uttarakhand.
- ❖ **Heavy to Very Heavy Rainfall** very likely at isolated places over Andhra Pradesh, Bihar, Chhattisgarh, Himachal Pradesh, Jammu-Kashmir-Ladakh-Gilgit-Baltistan-Muzaffarabad, Odisha, Sub Himalayan West Bengal & Sikkim, Uttar Pradesh and Vidarbha.
- ❖ **Heavy Rainfall** very likely at isolated places over Arunachal Pradesh, Assam & Meghalaya, Haryana, Chandigarh & Delhi, Kerala & Mahe, Konkan & Goa, Madhya Maharashtra, Madhya Pradesh, Marathwada, Nagaland, Manipur, Mizoram and Tripura, North Interior Karnataka, Punjab and Tamil Nadu Puducherry & Karaikal.
- ❖ **Thunderstorm accompanied with lightning & gusty winds(40-50kmph)** very likely at isolated places over Andaman & Nicobar Islands, Chhattisgarh, North Interior Karnataka and Vidarbha.
- ❖ **Thunderstorm accompanied with lightning & gusty winds(30-40kmph)** very likely at isolated places over Bihar, Gangetic West Bengal, Jammu-Kashmir-Ladakh-Gilgit-Baltistan-Muzaffarabad, Jharkhand, Odisha, Rayalaseema, South Interior Karnataka and Telangana.
- ❖ **Thunderstorm accompanied with Lightning** very likely at isolated places over Arunachal Pradesh, Assam & Meghalaya, Coastal Andhra Pradesh, Kerala & Mahe, Konkan & Goa, Madhya Maharashtra, Madhya Pradesh, Marathwada, Nagaland, Manipur, Mizoram and Tripura, Tamil Nadu Puducherry & Karaikal, Uttar Pradesh and Uttarakhand.
- ❖ **Strong Surface Winds** very likely at isolated places over Andaman & Nicobar Islands, Andhra Pradesh, Konkan & Goa and Odisha.

*Red color warning does not mean "Red Alert" Red color warning means "Take Action"

Forecast and warning for any day is valid from 0830 hours IST of day till 0830 hours IST of next day

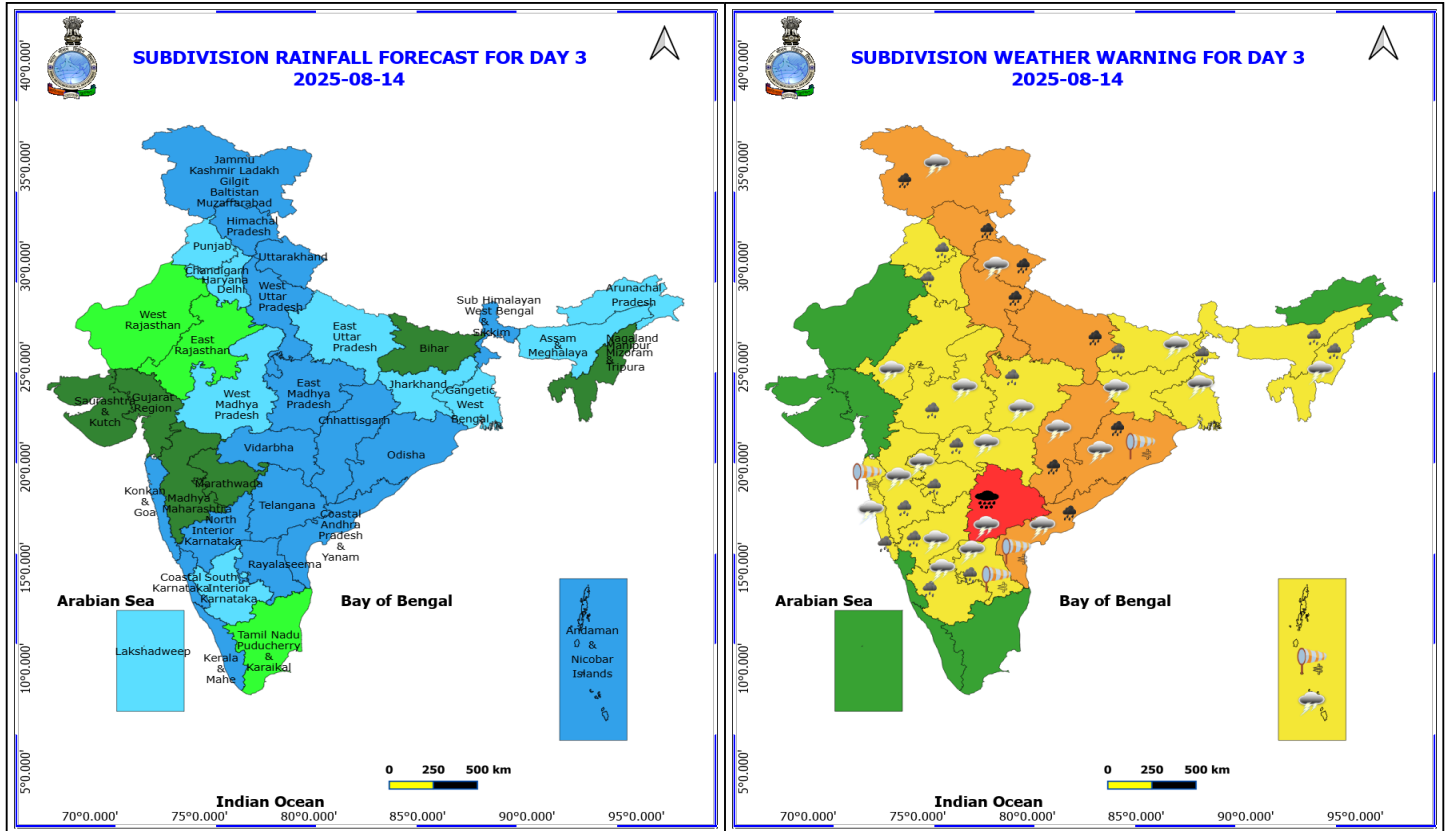
For more details kindly visit <https://mausam.imd.gov.in> or contact 011-2434-4599

(Service to the nation since 1875)



Squally wind with speed reaching 45 kmph to 55 kmph gusting to 65 kmph is likely to prevail along and off Somalia, Oman coasts, most parts of westcentral Arabian sea, few parts of southwest Arabian Sea, some parts of northwest Arabian sea.

Squally weather with wind speed reaching 40 - 50 kmph gusting to 60 kmph likely to prevail along and off north Gujarat coast & adjoining northeast & eastcentral Arabian Sea, along and off konkan & Goa coasts, over Gulf of Mannar and adjoining Comorin area, along and off Sri-Lanka coast, over south & central Bay of Bengal & adjoining northwest Bay of Bengal, over Andaman sea, along and off Andhra Pradesh, Odisha coast, adjoining sea areas.



14 August (Day 3)

- ❖ **Heavy to Very Heavy Rainfall with isolated Extremely Heavy Rainfall** very likely at isolated places over Telangana.
- ❖ **Heavy to Very Heavy Rainfall** very likely at isolated places over Chhattisgarh, Coastal Andhra Pradesh, Himachal Pradesh, Jammu-Kashmir-Ladakh-Gilgit-Baltistan-Muzaffarabad, Odisha, Uttar Pradesh and Uttarakhand.
- ❖ **Heavy Rainfall** very likely at isolated places over Assam & Meghalaya, Bihar, Haryana, Chandigarh & Delhi, Interior Karnataka, Konkan & Goa, Madhya Pradesh, Maharashtra, Nagaland, Manipur, Mizoram and Tripura, Punjab, Rayalaseema and Sub Himalayan West Bengal & Sikkim.
- ❖ **Thunderstorm accompanied with lightning & gusty winds(40-50kmph)** very likely at isolated places over Andaman & Nicobar Islands, Chhattisgarh, North Interior Karnataka and Vidarbha.
- ❖ **Thunderstorm accompanied with lightning & gusty winds(30-40kmph)** very likely at isolated places over Bihar, Gangetic West Bengal, Jammu-Kashmir-Ladakh-Gilgit-Baltistan-Muzaffarabad, Jharkhand, Odisha, Rayalaseema, South Interior Karnataka and Telangana.
- ❖ **Thunderstorm accompanied with Lightning** very likely at isolated places over Coastal Andhra Pradesh, East Rajasthan, Konkan & Goa, Madhya Maharashtra, Madhya Pradesh, Marathwada, Nagaland, Manipur, Mizoram and Tripura and Uttarakhand.
- ❖ **Strong Surface Winds** very likely at isolated places over Andaman & Nicobar Islands, Andhra Pradesh, Konkan & Goa and Odisha.
- ❖ Squally wind with speed reaching 45 kmph to 55 kmph gusting to 65 kmph is likely to prevail along and off Somalia, Oman coasts, most parts of westcentral Arabian sea & adjoining east central & northwest Arabian sea, some parts of

***Red color warning does not mean "Red Alert" Red color warning means "Take Action"**

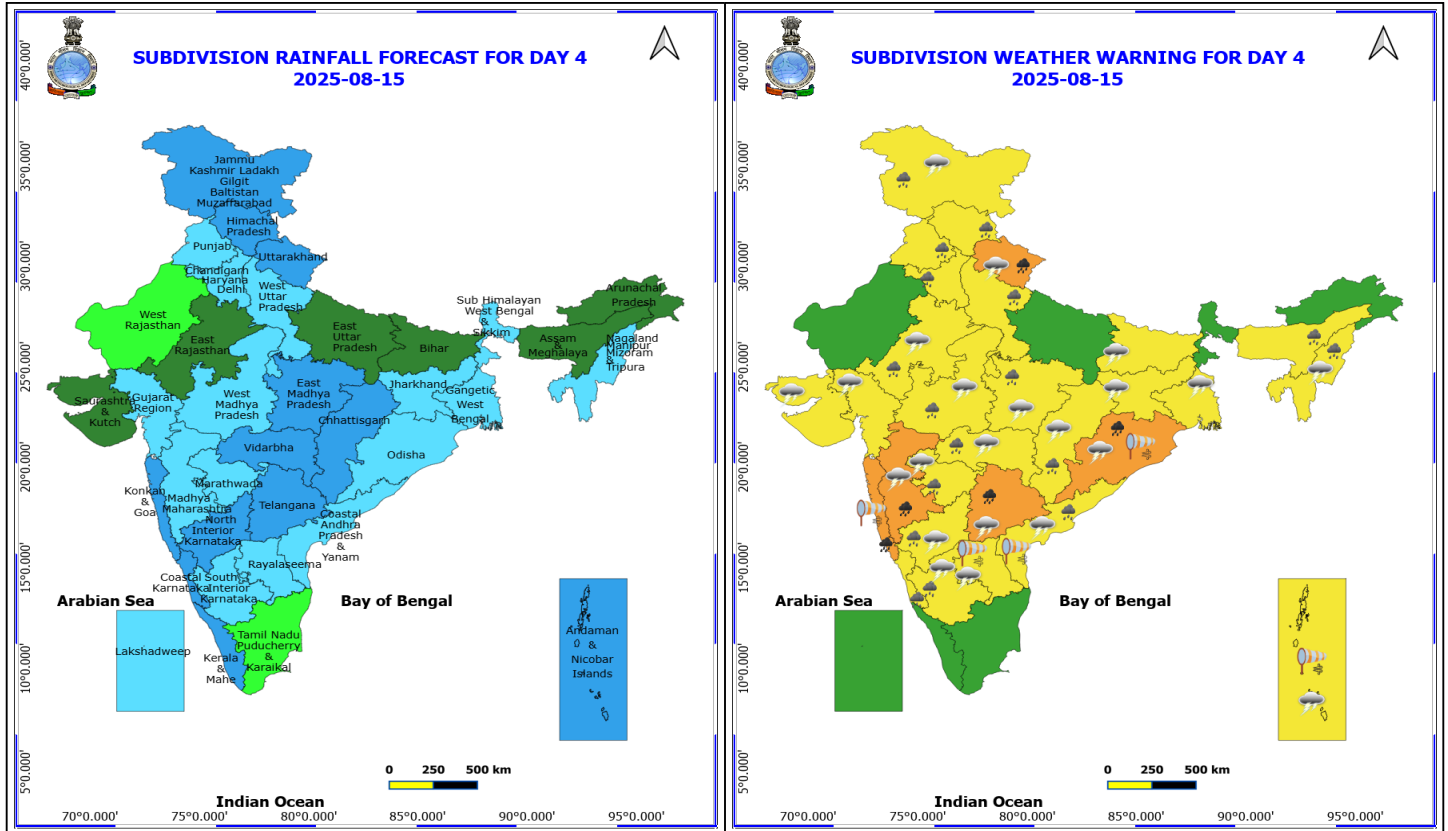
Forecast and warning for any day is valid from 0830 hours IST of day till 0830 hours IST of next day

For more details kindly visit <https://mausam.imd.gov.in> or contact 011-2434-4599

(Service to the nation since 1875)

southwest Arabian Sea

❖ Squally weather with wind speed reaching 40 - 50 kmph gusting to 60 kmph likely to prevail along and off along and off konkan & Goa coasts, over Gulf of Mannar and adjoining Comorin area, along and off Sri-Lanka coast, over south & central Bay of Bengal & adjoining, some parts of north Bay of Bengal, over Andaman sea, along and off Andhra Pradesh, Odisha coast, adjoining sea areas.



15 August (Day 4)

- ❖ **Heavy to Very Heavy Rainfall** likely at isolated places over Konkan & Goa, Madhya Maharashtra, Odisha, Telangana and Uttarakhand.
- ❖ **Heavy Rainfall** likely at isolated places over Assam & Meghalaya, Chhattisgarh, Coastal Andhra Pradesh, East Rajasthan, Haryana, Chandigarh & Delhi, Himachal Pradesh, Jammu-Kashmir-Ladakh-Gilgit-Baltistan-Muzaffarabad, Karnataka, Madhya Pradesh, Marathwada, Nagaland, Manipur, Mizoram and Tripura, Punjab, Vidarbha and West Uttar Pradesh.
- ❖ **Thunderstorm accompanied with lightning & gusty winds(40-50kmph)** likely at isolated places over Andaman & Nicobar Islands, North Interior Karnataka and Telangana.
- ❖ **Thunderstorm accompanied with lightning & gusty winds(30-40kmph)** likely at isolated places over Bihar, Gangetic West Bengal, Jammu-Kashmir-Ladakh-Gilgit-Baltistan-Muzaffarabad, Jharkhand, Odisha, Rayalaseema and South Interior Karnataka.
- ❖ **Thunderstorm accompanied with Lightning** likely at isolated places over Chhattisgarh, Coastal Andhra Pradesh, East Rajasthan, Gujarat State, Madhya Pradesh, Maharashtra, Nagaland, Manipur, Mizoram and Tripura and Uttarakhand.
- ❖ **Strong Surface Winds** likely at isolated places over Andaman & Nicobar Islands, Andhra Pradesh, Konkan & Goa and Odisha.

Squally wind with speed reaching 45 kmph to 55 kmph gusting to 65 kmph is likely to prevail along and off Somalia, Oman coasts, most parts of westcentral Arabian sea & adjoining east central & northwest Arabian sea, some parts of southwest Arabian Sea

***Red color warning does not mean "Red Alert" Red color warning means "Take Action"**

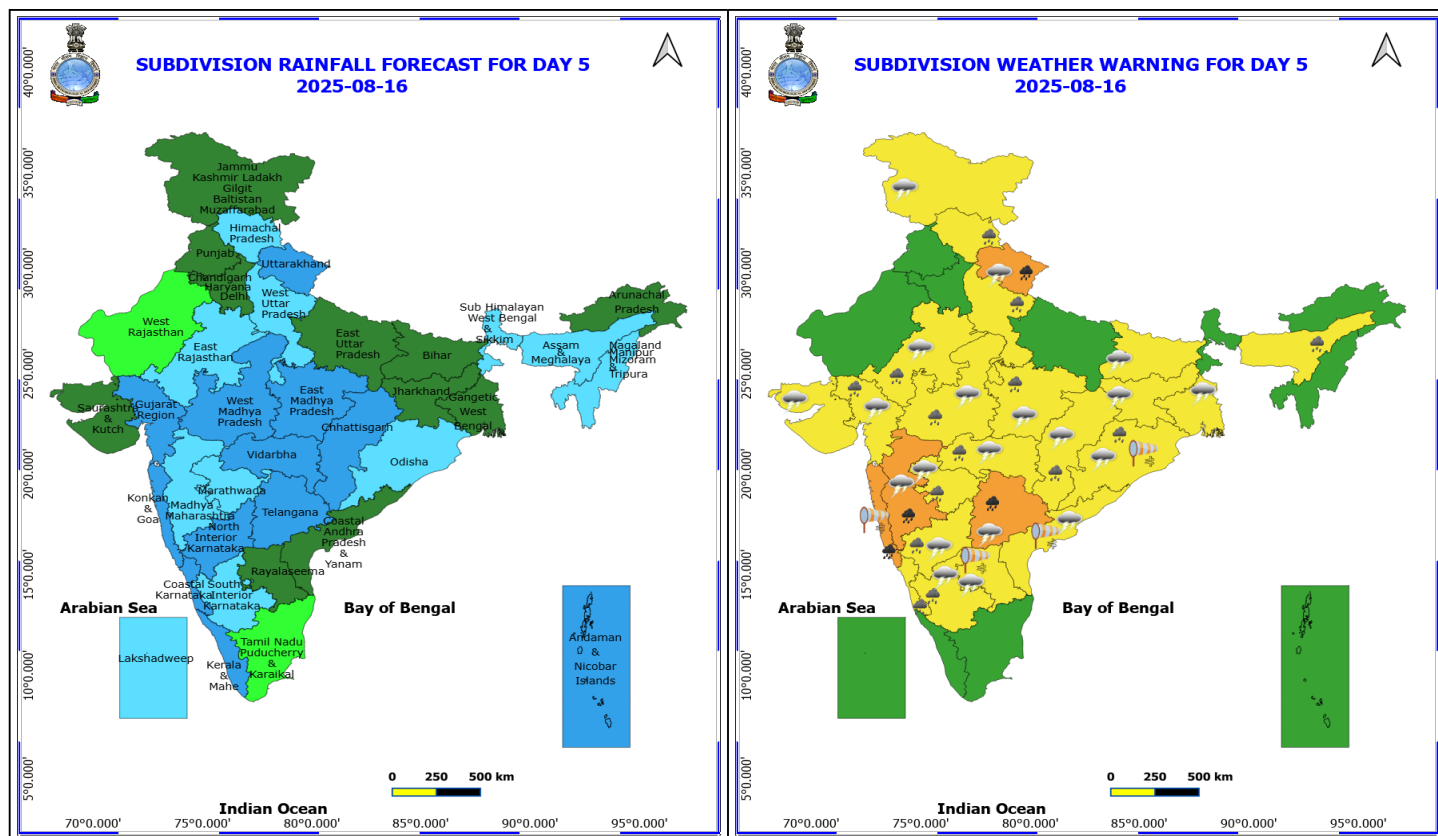
Forecast and warning for any day is valid from 0830 hours IST of day till 0830 hours IST of next day

For more details kindly visit <https://mausam.imd.gov.in> or contact 011-2434-4599

(Service to the nation since 1875)



Squally weather with wind speed reaching 40 - 50 kmph gusting to 60 kmph likely to prevail along and off along and off konkan & Goa coasts, over Gulf of Mannar and adjoining Comorin area, along and off Sri-Lanka coast, over south & central Bay of Bengal & adjoining, some parts of north Bay of Bengal, along and off Andhra Pradesh, Odisha coast, adjoining sea areas.



16 August (Day 5)

- ❖ **Heavy to Very Heavy Rainfall** likely at isolated places over Konkan & Goa, Madhya Maharashtra, Telangana and Uttarakhand.
- ❖ **Heavy Rainfall** likely at isolated places over Assam & Meghalaya, Chhattisgarh, East Rajasthan, Gujarat Region, Himachal Pradesh, Karnataka, Madhya Pradesh, Marathwada, Odisha, Vidarbha and West Uttar Pradesh.
- ❖ **Thunderstorm accompanied with lightning & gusty winds(40-50kmph)** likely at isolated places over North Interior Karnataka and Telangana.
- ❖ **Thunderstorm accompanied with lightning & gusty winds(30-40kmph)** likely at isolated places over Bihar, Gangetic West Bengal, Jammu-Kashmir-Ladakh-Gilgit-Baltistan-Muzaffarabad, Jharkhand, Odisha, Rayalaseema and South Interior Karnataka.
- ❖ **Thunderstorm accompanied with Lightning** likely at isolated places over Chhattisgarh, Coastal Andhra Pradesh, East Rajasthan, Gujarat State, Madhya Pradesh, Maharashtra and Uttarakhand.
- ❖ **Strong Surface Winds** likely at isolated places over Andhra Pradesh, Konkan & Goa and Odisha.

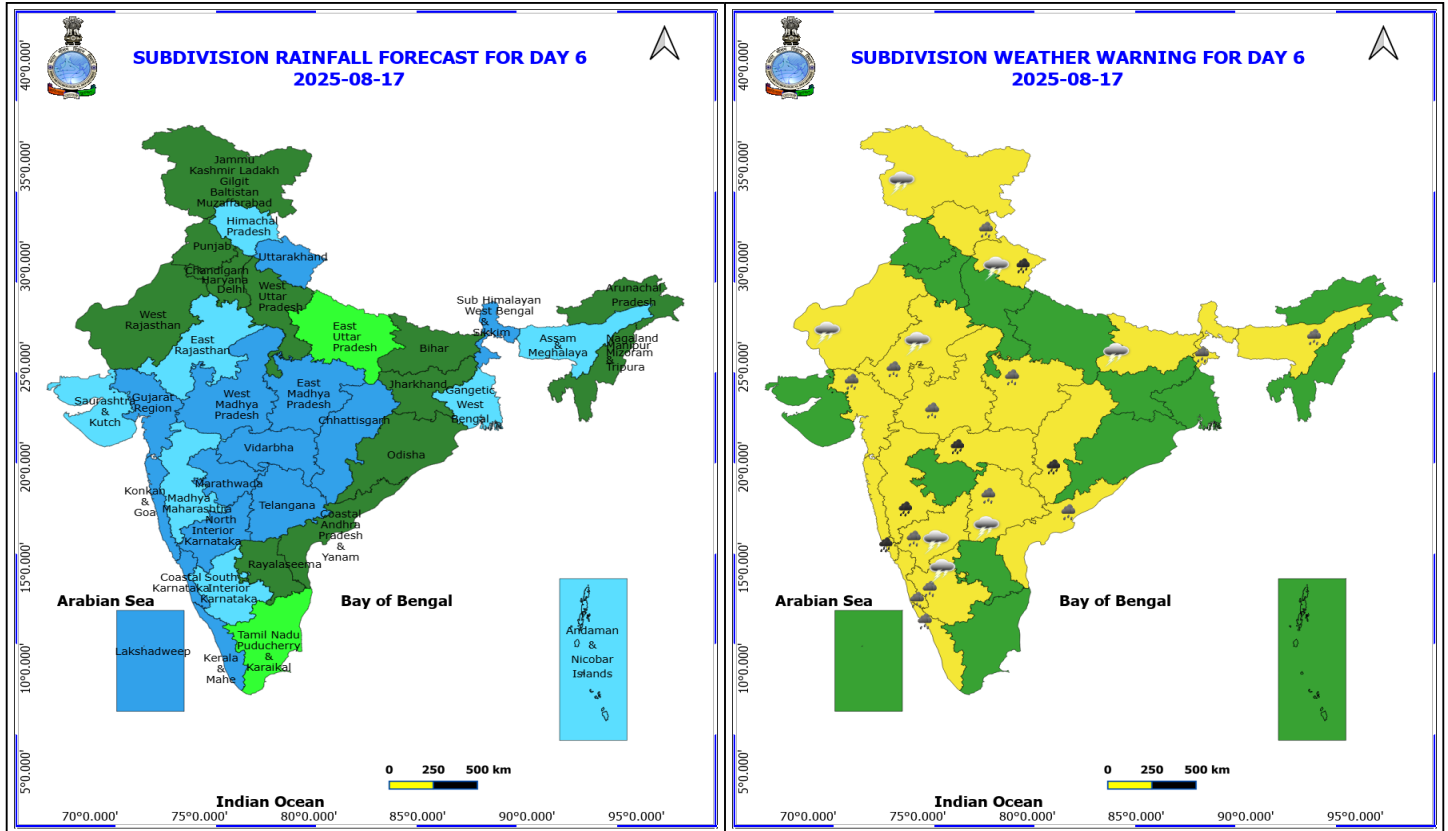
No Fishermen Warning

***Red color warning does not mean "Red Alert" Red color warning means "Take Action"**

Forecast and warning for any day is valid from 0830 hours IST of day till 0830 hours IST of next day

For more details kindly visit <https://mausam.imd.gov.in> or contact 011-2434-4599

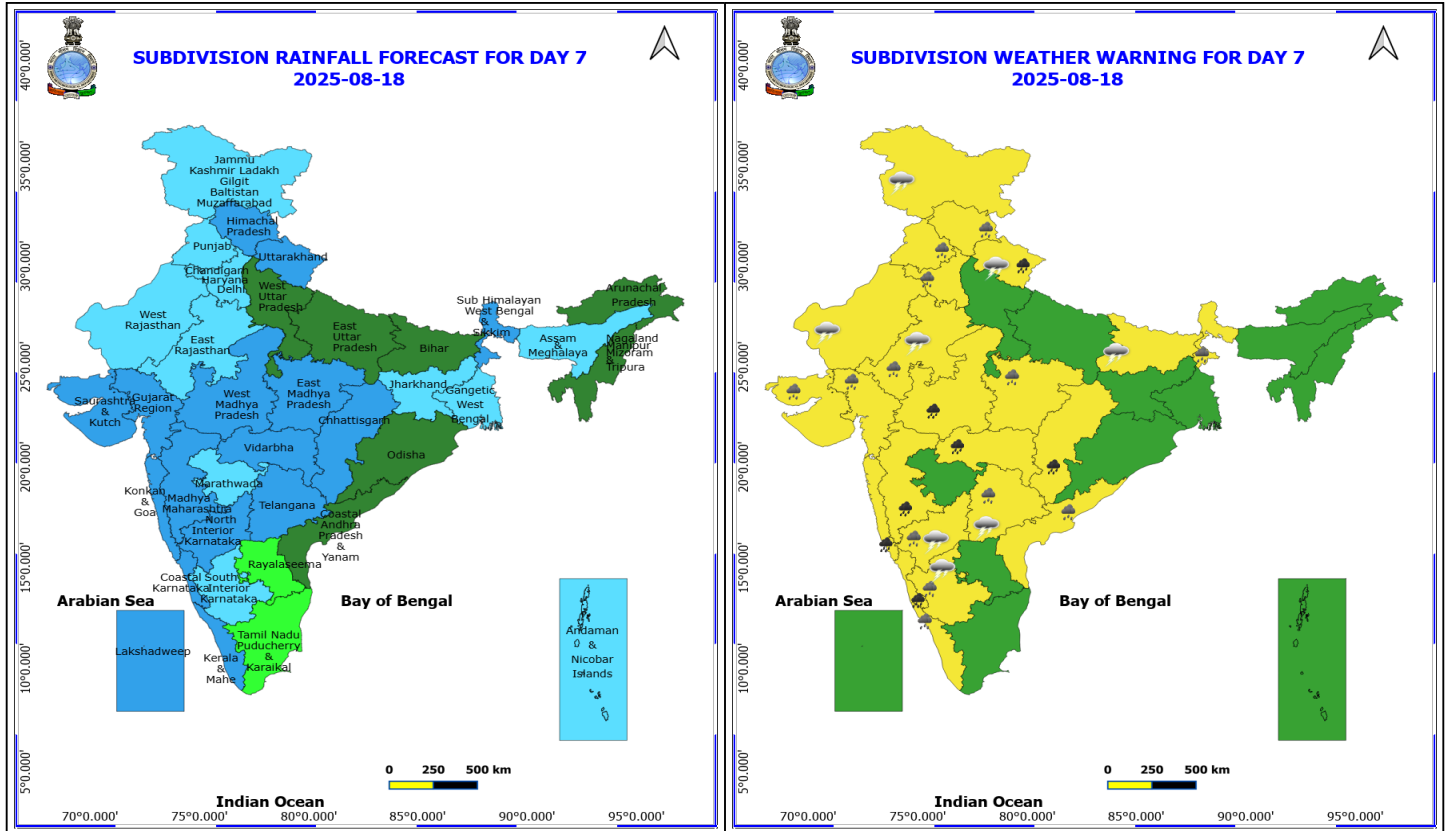
(Service to the nation since 1875)



17 August (Day 6)

- ❖ **Heavy to Very Heavy Rainfall** likely at isolated places over Chhattisgarh, Konkan & Goa, Madhya Maharashtra, Uttarakhand and Vidarbha.
- ❖ **Heavy Rainfall** likely at isolated places over Assam & Meghalaya, Coastal Andhra Pradesh, East Rajasthan, Gujarat Region, Himachal Pradesh, Karnataka, Kerala & Mahe, Madhya Pradesh, Sub Himalayan West Bengal & Sikkim and Telangana.
- ❖ **Thunderstorm accompanied with lightning & gusty winds(30-40kmph)** likely at isolated places over Bihar, Interior Karnataka, Jammu-Kashmir-Ladakh-Gilgit-Baltistan-Muzaffarabad and Telangana.
- ❖ **Thunderstorm accompanied with Lightning** likely at isolated places over Rajasthan and Uttarakhand.

No Fishermen Warning



18 August (Day 7)

- ❖ **Heavy to Very Heavy Rainfall** likely at isolated places over Chhattisgarh, Coastal Karnataka, Konkan & Goa, Madhya Maharashtra, Uttarakhand, Vidarbha and West Madhya Pradesh.
- ❖ **Heavy Rainfall** likely at isolated places over Coastal Andhra Pradesh, East Madhya Pradesh, East Rajasthan, Gujarat State, Haryana, Chandigarh & Delhi, Himachal Pradesh, Interior Karnataka, Kerala & Mahe, Punjab, Sub Himalayan West Bengal & Sikkim and Telangana.
- ❖ **Thunderstorm accompanied with lightning & gusty winds(30-40kmph)** likely at isolated places over Bihar, Interior Karnataka, Jammu-Kashmir-Ladakh-Gilgit-Baltistan-Muzaffarabad and Telangana.
- ❖ **Thunderstorm accompanied with Lightning** likely at isolated places over Rajasthan and Uttarakhand.

No Fishermen Warning

Flash Flood Warnings

24 hours Outlook for the Flash Flood Risk (FFR) till 1130 IST of 13-08-2025 :

Moderate to High flash flood risk likely over few watersheds & neighbourhoods of following Met Sub-divisions during next 24 hours.

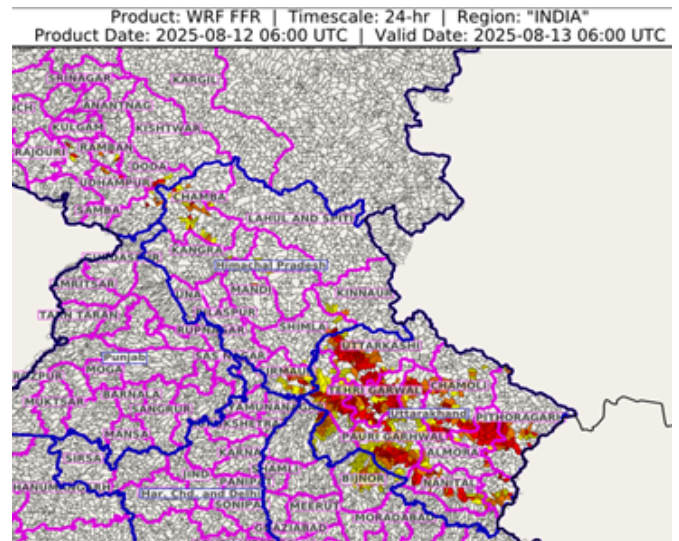
Himachal Pradesh - Chamba, Kangra, Kinnaur, Kullu, Mandi, Shimla and Sirmaur districts.

Jammu & Kashmir & Ladakh - Doda, Kathua, Rajouri, Ramban, Riasi and Udhampur districts.

Uttarakhand - Almora, Bageshwar, Chamoli, Champawat, Dehradun, Haridwar, Nanital, Pauri Garhwal, Pithoragarh, Rudrapur, Tehri Garhwal and Uttarkashi districts.

West Uttar Pradesh - Bijnor and Sharanpur districts.

Surface runoff/ Inundation may occur at some fully saturated soils & low-lying areas over Area of Concern (AoC) as shown in map due to expected rainfall occurrence in next 24 hours.

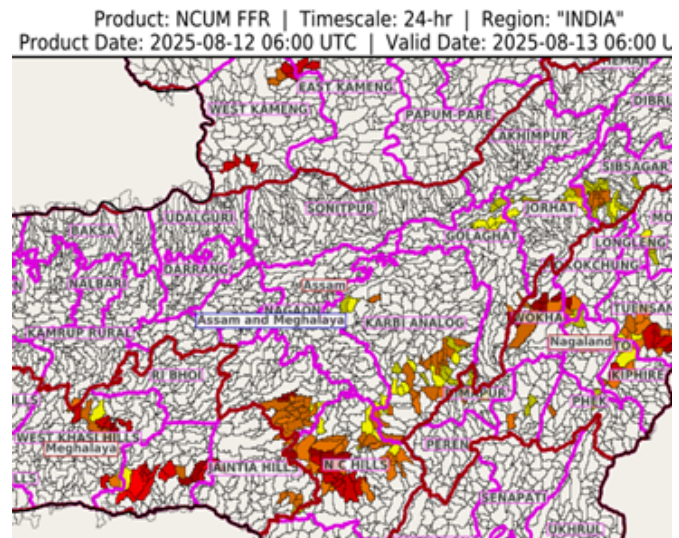


24 hours Outlook for the Flash Flood Risk (FFR) till 1130 IST of 13-08-2025 :

Low to Moderate flash flood risk likely over few watersheds & neighbourhoods of following Met Sub-divisions during next 24 hours.

Assam & Meghalaya - Golaghat, Jorhat, Karbi Analog, N.C Hills, Sibsagar, East Khasi Hills, West Khasi Hills and Jaintia Hills districts.

Surface runoff/ Inundation may occur at some fully saturated soils & low-lying areas over Area of Concern (AoC) as shown in map due to expected rainfall occurrence in next 24 hours.



*Red color warning does not mean "Red Alert" Red color warning means "Take Action"

Forecast and warning for any day is valid from 0830 hours IST of day till 0830 hours IST of next day

For more details kindly visit <https://mausam.imd.gov.in> or contact 011-2434-4599

(Service to the nation since 1875)



Table-1

7 Days Rainfall Forecast

S.No.	Subdivision	12-Aug	13-Aug	14-Aug	15-Aug	16-Aug	17-Aug	18-Aug
		Day 1	Day 2	Day 3	Day 4	Day 5	Day 6	Day 7
1	ANDAMAN & NICOBAR ISLANDS	WS	WS	WS	WS	WS	FWS	FWS
2	ARUNACHAL PRADESH	WS	FWS	FWS	SCT	SCT	SCT	SCT
3	ASSAM & MEHGHALAYA	WS	WS	FWS	SCT	FWS	FWS	FWS
4	N. M. M. & T.	FWS	FWS	SCT	FWS	FWS	SCT	SCT
5	S.H. WEST BENGAL & SIKKIM	WS	WS	WS	FWS	FWS	WS	WS
6	GANGETIC WEST BENGAL	SCT	SCT	FWS	FWS	SCT	FWS	FWS
7	ODISHA	SCT	FWS	WS	FWS	FWS	SCT	SCT
8	JHARKHAND	SCT	FWS	FWS	FWS	SCT	SCT	FWS
9	BIHAR	FWS	FWS	SCT	SCT	SCT	SCT	SCT
10	EAST UTTAR PRADESH	FWS	WS	FWS	SCT	SCT	ISOL	SCT
11	WEST UTTAR PRADESH	SCT	FWS	WS	FWS	FWS	SCT	SCT
12	UTTARAKHAND	WS	WS	WS	WS	WS	WS	WS
13	HARYANA, CHD & DELHI	SCT	FWS	FWS	FWS	SCT	SCT	FWS
14	PUNJAB	FWS	FWS	FWS	FWS	SCT	SCT	FWS
15	HIMACHAL PRADESH	WS	WS	WS	WS	FWS	FWS	WS
16	JAMMU AND KASHMIR AND LADAKH	FWS	FWS	WS	WS	SCT	SCT	FWS
17	WEST RAJASTHAN	ISOL	ISOL	ISOL	ISOL	ISOL	SCT	FWS
18	EAST RAJASTHAN	ISOL	ISOL	ISOL	SCT	FWS	FWS	FWS
19	WEST MADHYA PRADESH	SCT	FWS	FWS	FWS	WS	WS	WS
20	EAST MADHYA PRADESH	FWS	FWS	WS	WS	WS	WS	WS
21	GUJRAT REGION	SCT	SCT	SCT	FWS	WS	WS	WS
22	SAURASHTRA & KUTCH	SCT	SCT	SCT	SCT	SCT	FWS	WS
23	KONKAN & GOA	WS	WS	WS	WS	WS	WS	WS
24	MADHYA MAHARASHTRA	ISOL	SCT	SCT	FWS	FWS	FWS	WS
25	MARATHWADA	ISOL	SCT	SCT	FWS	FWS	WS	FWS
26	VIDARBHA	FWS	WS	WS	WS	WS	WS	WS
27	CHATTISGARH	FWS	WS	WS	WS	WS	WS	WS
28	COASTAL ANDHRA PRADESH	FWS	WS	WS	FWS	SCT	SCT	SCT
29	TELANGANA	WS	WS	WS	WS	WS	WS	WS
30	RAYALASEEMA	FWS	WS	WS	FWS	SCT	SCT	ISOL
31	TAMILNADU & PUDUCHERRY	SCT	SCT	ISOL	ISOL	ISOL	ISOL	ISOL
32	COSTAL KARNATAKA	WS	WS	WS	WS	WS	WS	WS
33	NORTH INTERIOR KARNATAKA	FWS	FWS	WS	WS	WS	WS	WS
34	SOUTH INTERIOR KARNATAKA	FWS	FWS	FWS	FWS	FWS	FWS	FWS
35	KERALA	WS	WS	WS	WS	WS	WS	WS
36	LAKSHDWEEP	WS	WS	FWS	FWS	FWS	WS	WS

Legend	Category	%Stations
WS	Widespread/Most Places	76-100
FWS	Fairly Widespread/Many Places	51-75
SCT	Scattered/ A Few Places	26-50
ISOL	Isolated Places	1-25
DRY	No Rain	0

*Red color warning does not mean "Red Alert" Red color warning means "Take Action"

Forecast and warning for any day is valid from 0830 hours IST of day till 0830 hours IST of next day

For more details kindly visit <https://mausam.imd.gov.in> or contact 011-2434-4599

(Service to the nation since 1875)

Fig. 1: Maximum Temperatures Dated 2025-08-12

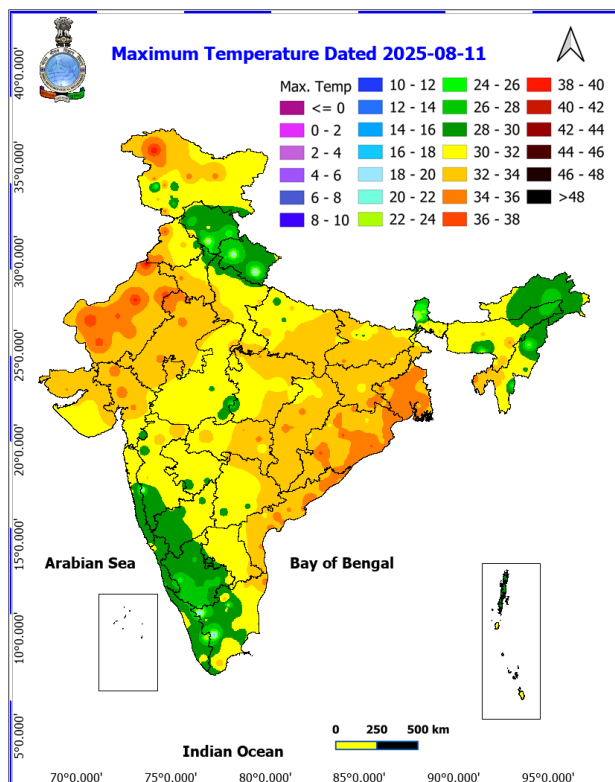


Fig. 2: Departure of Maximum Temp. Dated 2025-08-12

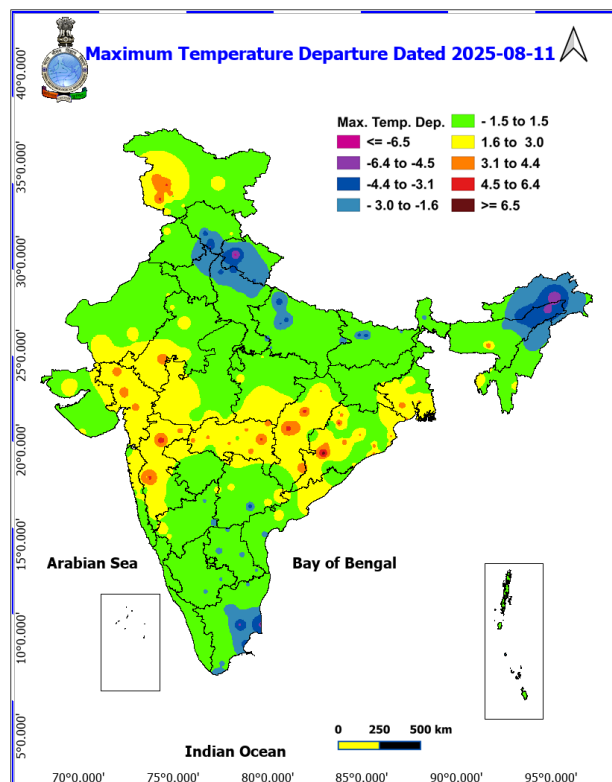


Fig. 3: Minimum Temperatures Dated 2025-08-12

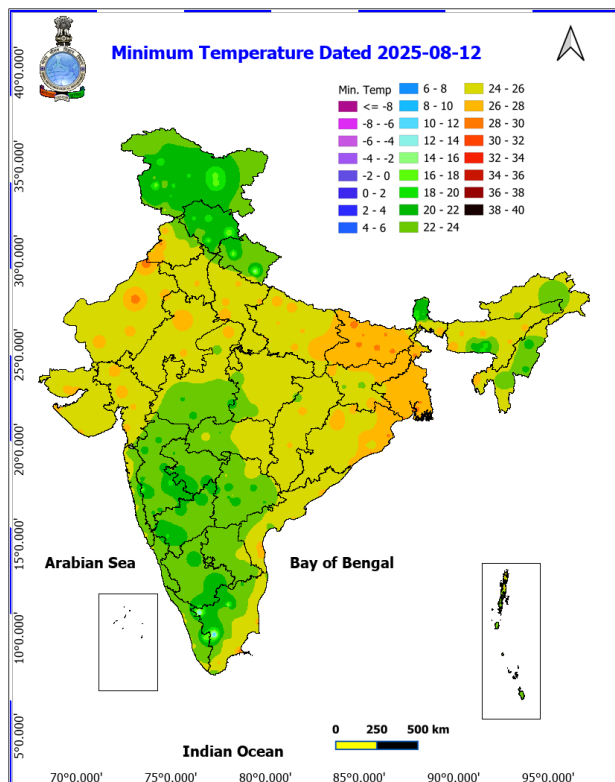
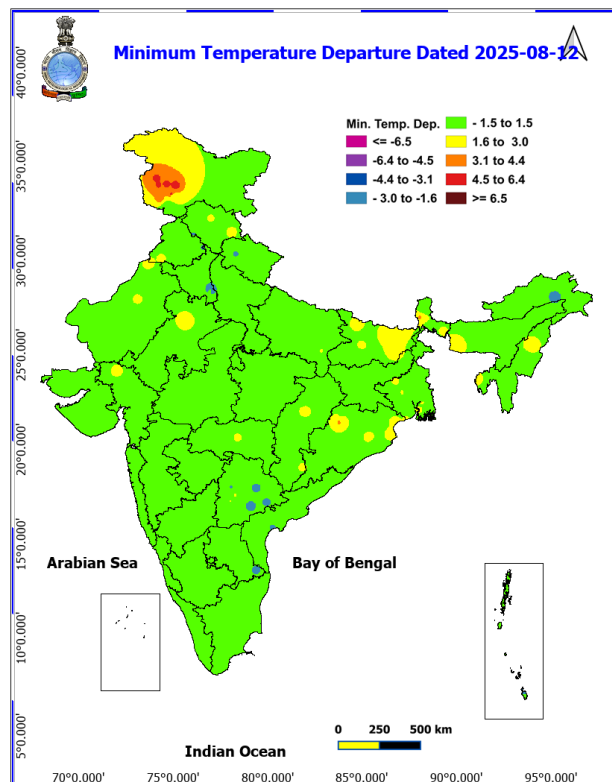
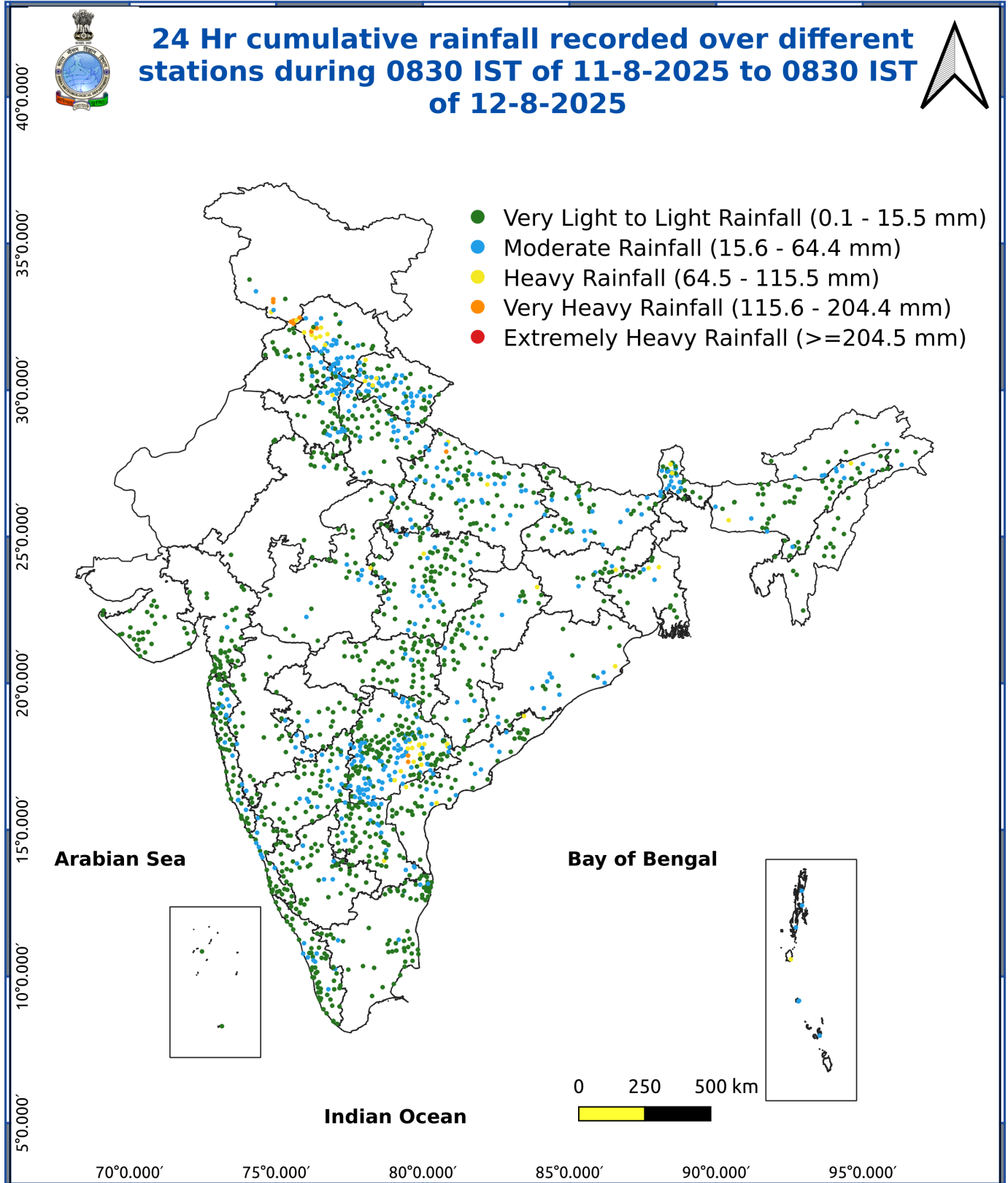


Fig. 4: Departure of Minimum Temp. Dated 2025-08-12





*Red color warning does not mean "Red Alert" Red color warning means "Take Action"

Forecast and warning for any day is valid from 0830 hours IST of day till 0830 hours IST of next day

For more details kindly visit <https://mausam.imd.gov.in> or contact 011-2434-4599

(Service to the nation since 1875)

Impact & Action Suggested due to

- **Extremely heavy rainfall** very likely at isolated places over Assam, Sub-Himalayan West Bengal & Sikkim on 12th; Uttarakhand on 13th and Telangana on 13th & 14th August
- **Very heavy rainfall** over Jammu, Himachal Pradesh during 12th-14th; Arunachal Pradesh, Uttarakhand on 12th, during 14th-18th; Uttar Pradesh, Coastal Andhra Pradesh & Yanam on 13th & 14th, Rayalaseema, Sub-Himalayan West Bengal & Sikkim on 13th; Telangana during 13th-16th; West Madhya Pradesh on 18th; Vidarbha, Chhattisgarh on 13th, 14th, 17th & 18th; Bihar on 12th & 13th and Odisha during 13th-15th and Konkan & Goa, ghat areas of Madhya Maharashtra during 15th-18th August.

Impact Expected

- Localized Flooding of roads, water logging in low lying areas and closure of underpasses mainly in urban areas of the above region.
- Occasional reduction in visibility due to heavy rainfall.
- Disruption of traffic in major cities due to water logging in roads leading to increased travel time.
- Minor damage to kutcha roads.
- Possibilities of damage to vulnerable structure.
- Localized Landslides/Mudslides/landslips/mudslips/landsinks/mudsinks.
- Damage to horticulture and standing crops in some areas due to inundation.
- It may lead to riverine flooding in some river catchments (for riverine flooding please visit Web page of CWC)

Action Suggested

- Check for traffic congestion on your route before leaving for your destination.
- Follow any traffic advisories that are issued in this regard.
- Avoid going to areas that face the water logging problems often.
- Avoid staying in vulnerable structure.

Agromet advisories for various parts of the country

Agromet advisories for likely impact of Heavy / Heavy to Very Heavy Rainfall

(Based on the IBF and advisories issued by different AMFUs)

- In **Sub-Himalayan West Bengal**, make provision to drain out excess water from rice, ginger, vegetable fields and fruit orchards in **Hill Zone** and *aman* paddy and vegetable fields in **Terai Zone**. Cover the chilli seedlings with plastic to protect them from heavy rains in **Terai Zone**.
- In **Bihar**, make provisions to drain out excess water from standing crops such as maize, nurseries of onion, chilli, and cauliflower in **North West Alluvial Plain Zone**; maize, finger millet, ragi, kodo, sava, china, etc. in **North East Alluvial Zone**.
- In **Odisha**, make arrangements for draining out excess water from the fields of pulses, maize, groundnut and vegetables in **South Eastern Ghat region**.
- In **Jammu and Kashmir**, do not allow water to stagnate in fields of maize, pulses, cowpea, bajra and vegetables in **Sub Tropical Zone**. Proper drainage should be ensured in the fields of paddy, maize, Pulses, horticultural and vegetable crops in **Intermediate Zone**.
- In **Uttarakhand**, make necessary arrangements to drain out excess water from the fields of already sown / transplanted rice, sugarcane, maize, black gram, green gram, groundnut, pigeon pea, finger millet, soybean and vegetables in **Bhabar and Terai Zone**; and from barnyard millet, finger millet, green gram and black gram in **Sub Humid Sub Tropic Zone**. In **Hill Zone**, strengthen the bunds to prevent surface runoff of water. Postpone sowing of vegetable pea till soil attains optimum moisture level. Maintain proper drainage channels in vegetable and crop fields. Undertake harvesting of matured capsicum fruits. Postpone sowing of vegetable pea until the soil attains optimum moisture, especially under excessive wet soil conditions.

*Red color warning does not mean "Red Alert" Red color warning means "Take Action"

Forecast and warning for any day is valid from 0830 hours IST of day till 0830 hours IST of next day

For more details kindly visit <https://mausam.imd.gov.in> or contact 011-2434-4599

(Service to the nation since 1875)

- In **Himachal Pradesh**, provide proper drainage channels in rice, maize, kidney beans, finger millet, apple, pomegranate and vegetable fields in **Sub Montane and Low Hills Sub Tropical Zone**; paddy, maize, pulses, plantation and vegetable crops in **High Hills Sub Temperate Wet Zone**; and maize, ginger, turmeric and vegetable fields in **Mid Hills Sub Humid Zone**.
- In **Uttar Pradesh**, maintain proper drainage in fields of rice, pigeon pea, sugarcane and vegetable crops in **South Western Semi Arid Zone**, make necessary arrangements for drainage of excess water from the fields pigeon pea, chilli and onion in **Bundelkhand Zone**; autumn sugarcane, spring sugarcane, paddy, pigeon pea, maize, green gram, black gram and vegetables in South Western Semi-Arid Zone; and pigeon pea, soybean, maize, groundnut, green gram, black gram and barnyard millet in Eastern Plain Zone.
- In **Madhya Pradesh**, provide adequate drainage in the fields of maize, soybean, blackgram, cotton, and pigeon pea in **Vindhyan Plateau Zone**; maize, soybean, cotton, sugarcane and vegetables in **Satpura Plateau Zone**; rice, soybean, maize, sugarcane and vegetables in **Central Narmada Valley Zone** and soybean, pigeon pea, cotton and vegetables in **Nimar Valley Zone**.
- In **Chhattisgarh**, drain out excess water from rice nurseries, fields of soybean, pigeon pea, green gram, black gram, maize, sugarcane and vegetables in **Plain Zone**; fields of rice, minor millets, maize, pulses and oilseeds in **Bastar Plateau Zone** and fields of pigeon pea, vegetables and transplanted rice in **North Hill Zone**.
- In **Arunachal Pradesh**, ensure proper drainage in rice, maize, finger millet, soybean, vegetables, and fruit orchards to avoid waterlogging. Provide strong support to fruit-bearing plants to prevent them from bending or breaking during heavy rains.
- In **Assam**, to prevent waterlogging, ensure proper drainage in *Sali* rice, green gram and pigeon pea fields and banana orchards in **Lower Brahmaputra Valley Zone**; *Sali* rice and sugarcane fields in **North Bank Plain Zone** and *Sali* rice fields in **Upper Brahmaputra Valley Zone**.
- In **Meghalaya**, ensure proper drainage in rice, maize, turmeric, chilli, okra and bitter gourd fields to prevent waterlogging. Provide staking/support to tall and fragile crops like banana, papaya, bottle gourd etc. to prevent lodging.
- In **Tamil Nadu**, ensure proper drainage in sorghum fields to prevent waterlogging, especially in heavy soils and low-lying areas. Ensure proper drainage around the coconut plants to avoid root rot.
- In **Andhra Pradesh**, provide adequate drainage in the fields of paddy, maize, groundnut, cotton, blackgram, greengram, and pigeon pea in **Krishna Godavari region**.
- In **Telangana**, drain out excess water from rice nurseries and recently transplanted rice as well as from fields of cotton, maize, red gram, soybean, sugarcane, and vegetables.

Livestock / Fishery

- Keep the animals inside the shed during heavy rainfall and provide them balanced feed.
- Store feed and fodder in a safe place to prevent spoilage.
- Construct an outlet with proper netting around the ponds to drain out excess water, thereby preventing fish from escaping in case of overflow.

Agromet advisories for likely impact of Thunderstorm / Gusty Winds / Squally Winds

(Based on the IBF and advisories issued by different AMFUs)

Provide mechanical support to horticultural crops and staking or support to vegetables and young fruit plants / fruit-bearing plants to avoid lodging due to strong winds.

Legends & abbreviations:

Region wise classification of meteorological Sub-Divisions:

Northwest India: Western Himalayan Region (Jammu-Kashmir-Ladakh-Gilgit-Baltistan-Muzaffarabad, Himachal Pradesh and Uttarakhand); Punjab, Haryana-Chandigarh-Delhi; West Uttar Pradesh, East Uttar Pradesh, West Rajasthan and East Rajasthan.

Central India: West Madhya Pradesh, East Madhya Pradesh, Vidarbha and Chhattisgarh.

***Red color warning does not mean "Red Alert" Red color warning means "Take Action"**

Forecast and warning for any day is valid from 0830 hours IST of day till 0830 hours IST of next day

For more details kindly visit <https://mausam.imd.gov.in> or contact 011-2434-4599

(Service to the nation since 1875)

East India: Bihar, Jharkhand, Sub-Himalayan West Bengal & Sikkim; Gangetic West Bengal, Odisha and Andaman & Nicobar Islands.

Northeast India: Arunachal Pradesh, Assam & Meghalaya and Nagaland, Manipur, Mizoram & Tripura.

West India: Gujarat Region, Saurashtra & Kutch, Konkan & Goa, Madhya Maharashtra and Marathawada.

South India: Coastal Andhra Pradesh & Yanam, Telangana, Rayalaseema, Coastal Karnataka, North Interior Karnataka, South Interior Karnataka, Kerala & Mahe, Tamil Nadu, Puducherry & Karaikal and Lakshadweep.

LEGENDS

- 1 अंडमान और निकोबार द्वीप समुह
- 2 अरुणाचल प्रदेश
- 3 असम और मेघालय
- 4 नागालैंड मनीपुर मीजोरम और त्रिपुरा
- 5 उप हिमालय पश्चिम बंगाल एवं सिक्किम
- 6 पश्चिम बंगाल
- 7 ओडिसा
- 8 झारखंड
- 9 बिहार
- 10 पूर्वी उत्तर प्रदेश
- 11 पश्चिम उत्तर प्रदेश
- 12 उत्तराखंड
- 13 हरियाणा चंडीगढ़ एवं दिल्ली
- 14 पंजाब
- 15 हिमाचल प्रदेश
- 16 जम्मू एवं कश्मीर एवं लद्दाख
- 17 पश्चिम राजस्थान
- 18 पूर्वी राजस्थान
- 19 पश्चिम मध्य प्रदेश
- 20 पूर्वी मध्य प्रदेश
- 21 गुजरात क्षेत्र
- 22 सौराष्ट्र एवं कच्छ
- 23 कोंकण एवं गोवा
- 24 मध्य महाराष्ट्र
- 25 मराठावाड़ा
- 26 विदर्भ
- 27 छत्तीसगढ़
- 28 तटीय आंध्र प्रदेश एवं यनम
- 29 तेलंगाना
- 30 रायलसीमा
- 31 तमिलनाडु, पुदुचेरी एवं कराईकल
- 32 तटिय कर्नाटक
- 33 आंतरिक उत्तरी कर्नाटक
- 34 आंतरिक दक्षिणी कर्नाटक
- 35 केरल एवं माहे
- 36 लक्षद्वीप



1. Andaman & Nicobar Islands
2. Arunachal Pradesh
3. Assam & Meghalaya
4. Nagaland, Manipur, Mizoram & Tripura
5. Sub-Himalayan West Bengal & Sikkim
6. Gangetic West Bengal
7. Orissa
8. Jharkhand
9. Bihar
10. East Uttar Pradesh
11. West Uttar Pradesh
12. Uttarakhand
13. Haryana, Chd & Delhi
14. Punjab
15. Himachal Pradesh
16. Jammu & Kashmir and Ladakh
17. West Rajasthan
18. East Rajasthan
19. West Madhya Pradesh
20. East Madhya Pradesh
21. Gujarat
22. Saurashtra
23. Konkan & Goa
24. Madhya Maharashtra
25. Marathwada
26. Vidharbha
27. Chhattisgarh
28. Coastal Andhra Pradesh & Yanam
29. Telangana
30. Rayalaseema
31. Tamilnadu, Puducherry & Karaikal
32. Coastal Karnataka
33. North Interior Karnataka
34. South Interior Karnataka
35. Kerala & Mahe
36. Lakshadweep

SPATIAL DISTRIBUTION (% of Stations reporting)

% Stations	Category	% Stations	Category
76-100	Widespread (WS/Most Places)	26-50	Scattered (SCT/ A Few Places)
51-75	Fairly Widespread (FWS/ Many Places)	1-25	Isolated (ISOL)

Subdivision Colour

- NO WARNING
- WATCH (BE UPDATED)
- ALERT (BE PREPARED TO TAKE ACTION)
- WARNING (TAKE ACTION)

Probabilistic Forecast

Terms	Probability of Occurrence (%)
Unlikely	< 25
Likely	25 - 50
Very Likely	50 - 75
Most Likely	> 75

-  Heavy Rain
-  Very Heavy Rain
-  Extremely Heavy Rain
-  Heavy Snow
-  Thunderstorm & Lightning
-  Hailstorm
-  Dust Storm
-  Dust Raising Winds
-  Strong surface winds
-  Heat Wave
-  Hot Day
-  Warm Night
-  Cold Wave
-  Cold Day
-  Ground Frost
-  FOG Fog
-  Hot & Humid

*Red color warning does not mean "Red Alert" Red color warning means "Take Action"

Forecast and warning for any day is valid from 0830 hours IST of day till 0830 hours IST of next day

For more details kindly visit <https://mausam.imd.gov.in> or contact 011-2434-4599

(Service to the nation since 1875)

LEGENDS

WARNING

WARNING (TAKE ACTION)
ALERT (BE PREPARED)
WATCH (BE UPDATED)
NO WARNING (NO ACTION)

Probabilistic Forecast

Terms	Probability of Occurrence (%)
Unlikely	< 25
Likely	25 - 50
Very Likely	50 - 75
Most Likely	> 75



Heavy: 64.5 to 115.5 mm/cm *
Very Heavy: 115.6 to 204.4 mm/cm *
Extremely Heavy: > 204.4 mm/cm *



When maximum temperature of a station reaches $\geq 40^{\circ}\text{C}$ for plains and $\geq 30^{\circ}\text{C}$ for hilly regions
(a) Based on Departure from normal

Heat Wave: Maximum Temperature Departure from normal 4.5°C to 6.4°C .
Severe Heat Wave: Maximum Temperature Departure from normal $\geq 6.5^{\circ}\text{C}$

(b). Based on Actual maximum temperature

Heat Wave: When actual maximum temperature $\geq 45^{\circ}\text{C}$.
Severe Heat Wave: When actual maximum temperature $\geq 47^{\circ}\text{C}$

(c). Criteria for heat wave for coastal stations

When maximum temperature departure is $> 4.5^{\circ}\text{C}$ from normal. Heat Wave may be described provided maximum temperature $\geq 37^{\circ}\text{C}$



When maximum temperature remains 40°C

Warm Night: When minimum temperature departure 4.5°C to 6.4°C .
Severe Warm Night: When minimum temperature departure $> 6.4^{\circ}\text{C}$.



When minimum temperature of a station $\leq 10^{\circ}\text{C}$ for plains and $\leq 0^{\circ}\text{C}$ for hilly regions.

(a). Based on departure

Cold Wave: Minimum Temperature Departure from normal -4.5°C to -6.4°C .
Severe Cold Wave: Minimum Temperature Departure from normal $\leq -6.5^{\circ}\text{C}$

(b) Based on actual Minimum Temperature (for Plains only)

Cold Wave: When Minimum Temperature is $\leq 4.0^{\circ}\text{C}$
Severe Cold Wave: When Minimum Temperature is $\leq 2.0^{\circ}\text{C}$

(c) For Coastal Stations

When Minimum Temperature departure is $\leq -4.5^{\circ}\text{C}$ & actual Minimum Temperature is $\leq 15^{\circ}\text{C}$



When minimum temperature of a station $\leq 10^{\circ}\text{C}$ for plains and $\leq 0^{\circ}\text{C}$ for hilly regions
Based on departure

Cold Day: Maximum Temperature Departure from normal -4.5°C to -6.4°C .
Severe Cold Day: Maximum Temperature Departure from normal $\leq -6.5^{\circ}\text{C}$



Phenomenon of small droplets suspended in air and the horizontal visibility $< 1\text{km}$

Moderate Fog: When the visibility between 500-200 metres
Dense Fog: when the visibility between 50-200 metres
Very Dense Fog: when the visibility < 50 metres



Sudden electrical discharges manifested by a flash of light (Lightning) and a sharp rumbling sound (thunder)



An ensemble of particles of dust or sand energetically lifted to great heights by a strong and turbulent wind.



Ice deposits on ground

Air temperature $\leq 4^{\circ}\text{C}$ (over Plains)



A strong wind that rises suddenly, lasts for at least 1 minute.

Moderate: Wind speed 52-61 kmph
Severe: Wind speed 62-87 kmph
Very Severe: Wind speed > 87 kmph



Effect of various waves in the sea over specific area

Rough to very rough: Wind speed 41-62 kmph (22-33 knots) & Wave height 2.5-6 metre
High to very high: Wind speed 63-117 kmph (34-63 knots) & Wave height 6-14 metre
Phenomenal: Wind speed > 117 kmph (> 63 knots) & Wave height > 14 metre



Cyclonic Storm: Wind speed 62-87 kmph (34-47 knots)

Severe Cyclonic Storm: Wind speed 88-117 kmph (48-63 knots)
Very Severe Cyclonic Storm: Wind speed 118-165 kmph (64-89 knots)
Extremely Severe Cyclonic Storm: Wind speed 166-220 kmph (90-119 knots)
Super Cyclone Storm: Wind speed > 220 kmph (> 119 knots)

*Red color warning does not mean "Red Alert" Red color warning means "Take Action"

Forecast and warning for any day is valid from 0830 hours IST of day till 0830 hours IST of next day

For more details kindly visit <https://mausam.imd.gov.in> or contact 011-2434-4599

(Service to the nation since 1875)