

2026-03-29

Time of Issue: 13:05:00 hours IST
(Mid-Day)

ALL INDIA WEATHER SUMMARY AND FORECAST BULLETIN

Significant Weather Features

WEATHER FORECAST AND WARNING:

Northwest India:

- **Fairly widespread to widespread** light to moderate rainfall/snowfall with isolated thunderstorm, lightning & gusty winds speed reaching (30-50 kmph) likely over Jammu-Kashmir-Ladakh-Gilgit-Baltistan-Muzaffarabad during 29th- 30th March and on 02nd and 03rd April; Himachal Pradesh and Uttarakhand during 29th -30th March and on 03rd and 04th April Uttarakhand during 29th- 31st March.
- **Isolated to Scattered** light to moderate rainfall with thunderstorm, lightning & gusty winds speed reaching (30-50 kmph) likely over Punjab, Haryana, Chandigarh & Delhi, Uttar Pradesh and Rajasthan during 29th-31st March.
- **Isolated heavy rainfall/snowfall** likely over Kashmir valley on 30th March.
- **Isolated hailstorm activity** also likely over Jammu-Kashmir and West Rajasthan on 29th; Himachal Pradesh, Punjab and East Rajasthan on 29th & 30th; Uttarakhand on 30th March.

Northeast India:

- **Fairly widespread to widespread** light to moderate rainfall with **thunderstorm, lightning & gusty winds speed reaching (30-50 kmph)** likely over Assam & Meghalaya during 29th March -02nd April and Nagaland, Manipur, Mizoram & Tripura during 29th -31st March with lightning over Arunachal Pradesh during 29th -31st March.
- **Isolated heavy rainfall** likely over Arunachal Pradesh and Assam & Meghalaya during 30th March -01st April and Nagaland, Manipur, Mizoram & Tripura on 30th March.

East India:

- **Fairly widespread to widespread** light to moderate rainfall with **thunderstorm, lightning & gusty winds speed reaching (30-50 kmph)** likely over Sub-Himalayan West Bengal & Sikkim during 29th March- 01st April; Gangetic West Bengal and Bihar on 29th March; Jharkhand on 29th, 31st March and 02nd April; Odisha during next 5 days.
- **Isolated to Scattered** light to moderate rainfall with **thunderstorm, lightning & gusty winds speed reaching (40-50 gusting to 60 kmph)** likely over Gangetic West Bengal and Bihar on 31st March.
- **Thundersquall (wind speed reaching 50-60 kmph gusting to 70 kmph)** likely over Gangetic West Bengal and Bihar on 31st March.
- **Isolated heavy rainfall with hailstorm activity** likely over Sub-Himalayan West Bengal & Sikkim on 31st March.

Central India:

- **Isolated** light to moderate rainfall **with thunderstorm, lightning & gusty winds speed reaching (30-50 kmph)** likely over Madhya Pradesh and Vidarbha during 29th March- 02nd April and Chhattisgarh during next 6 days.
- **Isolated hailstorm activity** likely over West Madhya Pradesh on 30th March and Vidarbha & Chhattisgarh on 31st March.

West India:

- **Isolated** light to moderate rainfall **with thunderstorm, lightning & gusty winds speed reaching (30-50 gusting to 60 kmph)** likely over Madhya Maharashtra during 29th -31st March and Marathwada during 29th March – 02nd April; Gujarat State on 29th, 30th March and 02nd April with lightning over Konkan & Goa during 31st March – 02nd April and Madhya Maharashtra on 01st & 02nd April.
- **Isolated hailstorm activity** likely over Madhya Maharashtra and Marathwada on 30th & 31st March.

*Red color warning does not mean "Red Alert" Red color warning means "Take Action"

Forecast and warning for any day is valid from 0830 hours IST of day till 0830 hours IST of next day

For more details kindly visit <https://mausam.imd.gov.in> or contact 011-2434-4599

(Service to the nation since 1875)

South Peninsular India:

- **Isolated** light to moderate rainfall **with thunderstorm, lightning & gusty winds speed reaching (30-50 gusting to 60 kmph)** likely over Kerala & Mahe on 29th; Coastal Andhra Pradesh & Yanam, Rayalaseema, Telangana and Karnataka during 29th March – 02nd April with **lightning** over Tamil Nadu on 29th & 31st March; Coastal Karnataka and Kerala & Mahe during 30th March-02nd April.

Forecast of maximum/day temperatures:

- Gradual fall in maximum temperatures by 2-4°C likely over Northwest India till 30th March; gradual rise by 3-5°C during 29th March -02nd April.
- No significant change in maximum temperatures likely over Central India till 01st April and gradual fall by 3-5°C during 02nd -04th April.
- Gradual rise in maximum temperatures by 3-5°C likely over East India till 02nd April and no large change during 03rd -04th April.
- Gradual fall in maximum temperatures by 2-3°C likely over Gujarat State till 01st April and no significant change during 02nd -04th April.
- No significant change in maximum temperatures likely over Maharashtra till 30th March and gradual fall by 2-3°C during 31st March -04th April.
- No significant change in maximum temperatures likely over rest parts of the country.

Main Weather Observations:

❖ **Rainfall distribution** (from 0830 hours IST of yesterday to 0830 hours IST of today): **at most places** over Arunachal Pradesh, Assam & Meghalaya, Sub Himalayan West Bengal & Sikkim and Jammu-KashmirLadakh-Gilgit-Baltistan-Muzaffarabad; **at many places** over Nagaland, Manipur, Mizoram & Tripura and Kerala & Mahe; **at a few places** over Punjab and Himachal Pradesh; **at isolated places** over Gangetic West Bengal, Haryana-Chandigarh-Delhi, West Rajasthan, Rayalaseema and Tamil Nadu, Puducherry & Karaikal; **Dry** over rest of the country.

❖ **Significant rainfall recorded(in cm)** (from 0830 hours IST of yesterday to 0830 hours IST of today): **Kerala & Mahe**: Kunnathanam AWS (dist Pathanamthitta) 5; Kottayam (dist Kottayam) 4; Kochi IAF (dist Ernakulam), Ambalavayal (dist Wynaad), Angadipuram (dist Malappuram), Vaikom (dist Kottayam), Karumadi AWS (dist Alapuzha), Aralam AWS (dist Cannur), Vadavathur AWS (dist Kottayam), Vaikom AWS (dist Kottayam), Laha AWS (dist Pathanamthitta) 3 Each; Kodungallur (dist Thrissur), Hosdurg (dist Kasargod), Mancompu (dist Alapuzha), Thodupuzha (dist Idukki), Piravam (dist Ernakulam), Konni (dist Pathanamthitta), Cherthala (dist Alapuzha), Mahe (dist Mahe), Idukki (dist Idukki), Chemberi AWS (dist Cannur), Vilangad AWS (dist Kozhikode), Ulanad AWS (dist Pathanamthitta), Ranni AWS (dist Pathanamthitta), Padamala AWS (dist Wynaad), Ams Kannur (dist Cannur), Ernakulam South (dist Ernakulam) 2 Each; **Jammu-KashmirLadakh-Gilgit-Baltistan-Muzaffarabad**: Batote (dist Ramban) 4; Raj Pura ARG (dist Poonch) 3; Govindpura AWS (dist Ramban), Poonch (dist Poonch) 2 Each; **Assam & Meghalaya**: Lala ARG (dist Hailakandi) 4; Haflong AWS (dist Dima Hasao), Lakhipur ARG (dist Cachar), Silchar (dist Cachar) 3 Each; Kheronighat (dist West Karbi Anglong), Lumding (dist Hojai), Diphu AWS (dist Karbi Anglong), Amraghat ARG (dist Cachar), Dhansiri ARG (dist Karbi Anglong), Matijuri ARG (dist Hailakandi) 2 Each; **Nagaland, Manipur, Mizoram & Tripura**: Zunheboto (dist Zunheboto) 4; Aizawl (dist Aizawl), Kohima (dist Kohima), Lengpui (dist Aizawl), Kohima Sadar Nsdma AWS (dist Kohima) 2 Each; **Tamil Nadu, Puducherry & Karaikal**: Pechiparai (dist Kanyakumari), Thuckalay (dist Kanyakumari) 2 Each; **Sub Himalayan West Bengal & Sikkim**: Rongo (dist Kalimpong), Mangan (dist Mangan) 2 Each; **Arunachal Pradesh**: Daparijo (dist Upper Subansiri), Basar AWS (dist West Siang), Daporizo AWS (dist Upper Subansiri) 2 Each.

❖ **Minimum Temperature Departures (as on 29-03-2026):** **markedly above normal(> 5.1°C)** at few places over Haryana-Chandigarh-Delhi, West Rajasthan and East Rajasthan; at isolated places over West Uttar Pradesh, Himachal Pradesh and Saurashtra & Kutch. **appreciably above normal(3.1°C to 5.0°C)** at many places over Jammu-KashmirLadakh-Gilgit-Baltistan-Muzaffarabad; at few places over Punjab, West Madhya Pradesh and Gujarat Region; at isolated places over Uttarakhand, Madhya Maharashtra, Vidarbha, Rayalaseema and Tamil Nadu, Puducherry & Karaikal. **above normal(1.6°C to 3.0°C)** at many places over Odisha and Lakshadweep; at few places over Andaman & Nicobar Islands, East Uttar Pradesh, East Madhya Pradesh and Telangana; at isolated places over Assam & Meghalaya, Gangetic West Bengal, Jharkhand, Bihar, Konkan & Goa, Marathwada, Chhattisgarh and Coastal Andhra Pradesh & Yanam. **near normal(-1.5°C to 1.5°C)** at many places over Nagaland, Manipur, Mizoram & Tripura, Sub Himalayan West Bengal & Sikkim, North Interior Karnataka, South Interior Karnataka and Kerala & Mahe; at most places over Arunachal Pradesh; at few places over Coastal Karnataka. **The lowest minimum temperature** of 14.0°C was reported at HALFLONG (ASSAM) over the Plains of India.

❖ **Maximum Temperature Departures (as on 28-03-2026):** **markedly above normal(> 5.1°C)** at isolated places over Jammu-KashmirLadakh-Gilgit-Baltistan-Muzaffarabad and Konkan & Goa. **appreciably above normal(3.1°C to 5.0°C)** at isolated places over Himachal Pradesh, Saurashtra & Kutch and Tamil Nadu, Puducherry & Karaikal. **above normal(1.6°C to 3.0°C)** at few places over Punjab, East Rajasthan, Vidarbha, Coastal Karnataka and Kerala & Mahe; at isolated places over Gangetic West Bengal, Odisha, West Uttar Pradesh, Haryana-Chandigarh-Delhi, West Rajasthan, Madhya Maharashtra, Chhattisgarh, Coastal Andhra Pradesh & Yanam and Rayalaseema. **near normal(-1.5°C to 1.5°C)** at many places over Andaman & Nicobar Islands; at most places over Uttarakhand, West Madhya Pradesh, East Madhya Pradesh, Gujarat Region, Marathwada, Telangana, North Interior Karnataka, South Interior Karnataka and Lakshadweep; at few places over Arunachal Pradesh, Jharkhand and East Uttar Pradesh; at isolated places over Bihar. **The highest maximum temperature** of 41.2°C was reported at AKOLA (MAHARASHTRA).

***Red color warning does not mean "Red Alert" Red color warning means "Take Action"**

Forecast and warning for any day is valid from 0830 hours IST of day till 0830 hours IST of next day

For more details kindly visit <https://mausam.imd.gov.in> or contact 011-2434-4599

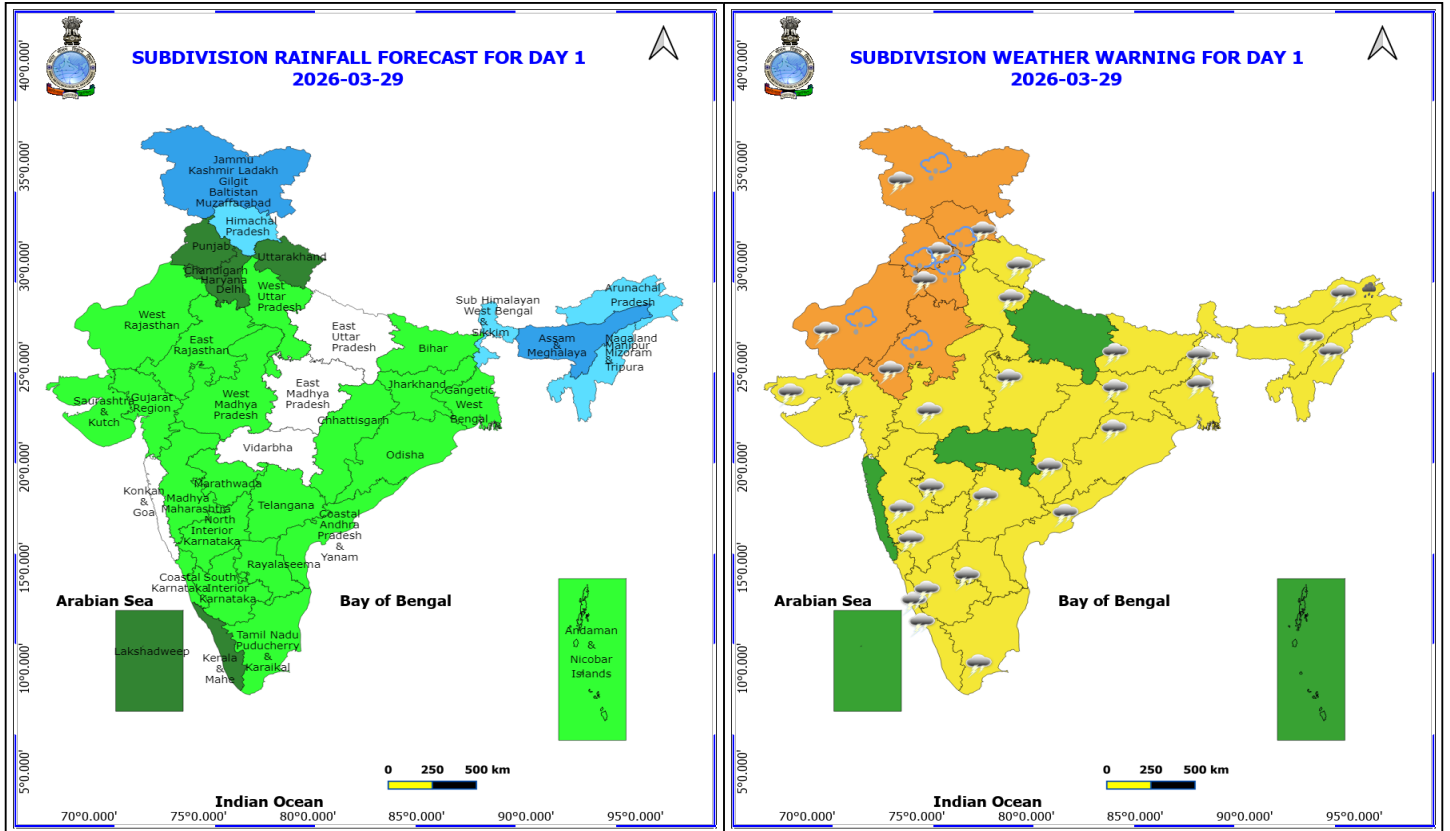
(Service to the nation since 1875)

Meteorological Analysis (Based on 0830 hours IST)

- The **Western Disturbance** as an **upper air cyclonic circulation** over North Iran & adjoining Caspian sea between 3.1 & 9.4 km above mean sea level with an associated trough roughly along Long. 57°E to the north of Lat. 23°N at 5.8 km above mean sea level.
- The **upper air cyclonic circulation** over northwest Rajasthan & neighbourhood extending upto 1.5 km above mean sea level persists.
- A trough runs from above cyclonic circulation over northwest Rajasthan to central parts of north Madhya Pradesh at 0.9 above mean sea level.
- A **trough** runs from Bihar to Gangetic West Bengal across Jharkhand at 1.5 km above mean sea level.
- An **upper air cyclonic circulation lies** over north Odisha & neighbourhood at 0.9 km above mean sea level.
- The **trough/Wind discontinuity** from above **cyclonic circulation** over north Odisha to south Tamil Nadu across south Chhattisgarh, Telangana and Interior Karnataka at 0.9 km above mean sea level.
- An **upper air cyclonic circulation lies** over Northeast Bangladesh & neighbourhood at 0.9 km above mean sea level.
- An **upper air cyclonic circulation lies** over northeast Assam & neighbourhood at 1.5 km above mean sea level.
- An **upper air cyclonic circulation lies** over Rayalaseema & neighbourhood at 1.5 km above mean sea level.
- An **upper air cyclonic circulation lies** over South Interior Karnataka & neighbourhood at 5.8 km above mean sea level.
- **Subtropical westerly Jet Stream** with core winds of the order of 80 knots at 12.6 km above mean sea level prevails over North India.
- A fresh **Western Disturbance** is likely to affect Northwest India from 02nd April, 2026.
- The **upper air cyclonic circulation** over central Assam & neighbourhood extending upto 1.5 km above mean sea level has become less marked.
- The **upper air cyclonic circulation** over Sub-Himalayan West Bengal & neighbourhood extending upto 1.5 km above mean sea level has become less marked.
- The **upper air cyclonic circulation** over South Interior Karnataka & neighbourhood at 1.5 km above mean sea level has become less marked.
- The **trough in westerlies** in lower to upper tropospheric levels between 3.1 & 9.4 km above mean sea level roughly along Long. 92°E to the north of Lat. 23°N has become less marked.

Weather Outlook for subsequent 3 days

- Widespread rainfall activity likely over Northeast India, Jammu & Kashmir adjoining Punjab, Himachal Pradesh, Tamil Nadu and isolated rainfall activity over Uttarakhand & adjoining plains of western himalayan region, Central India, Odisha & adjoining Coastal Andhra Pradesh.

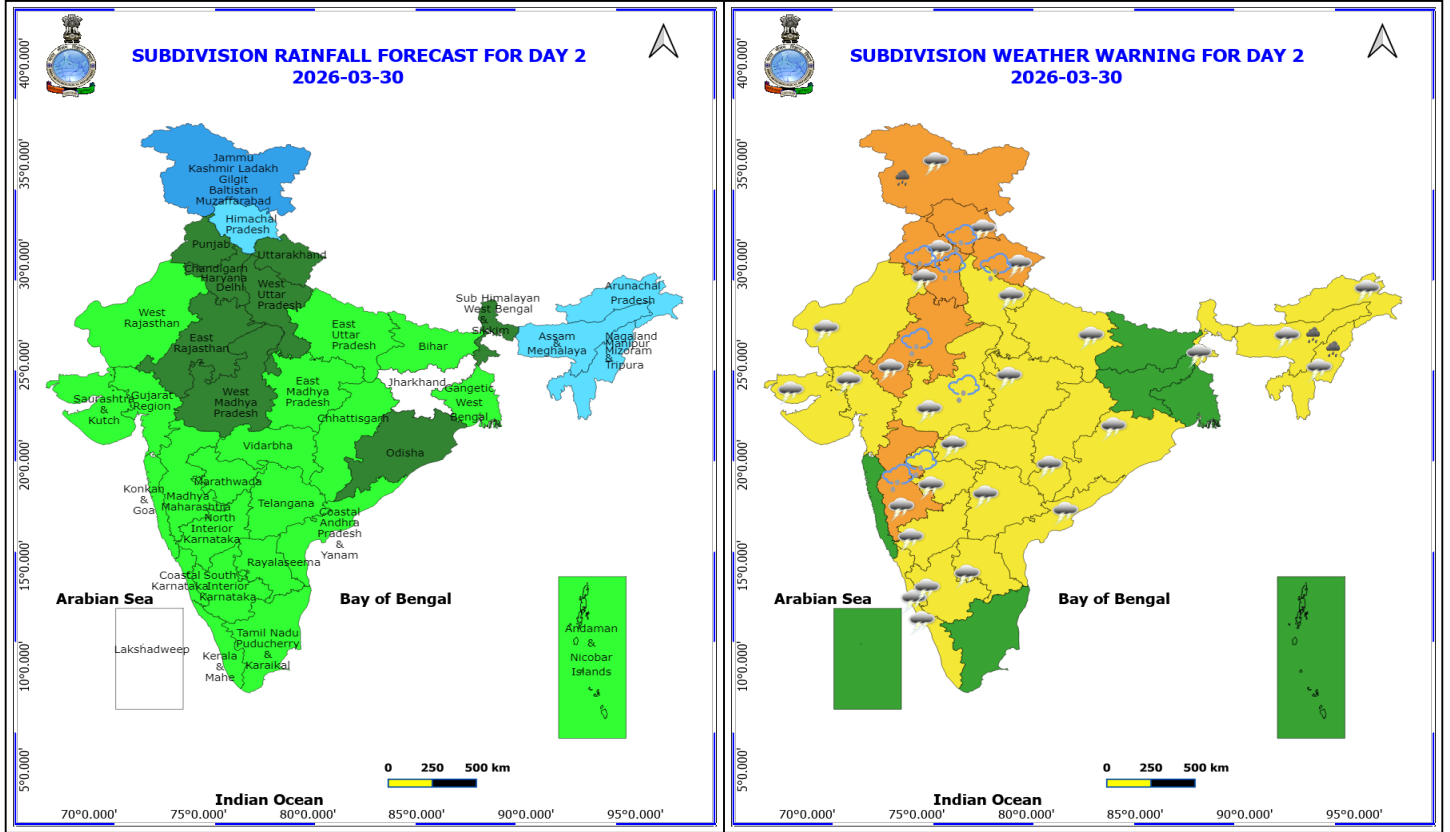


29 March (Day 1)

- ❖ **Heavy Rainfall** very likely at isolated places over Arunachal Pradesh.
 - ❖ **Thunderstorm accompanied with Hailstorm** very likely at isolated places over Haryana, Chandigarh & Delhi, Himachal Pradesh, Jammu-Kashmir-Ladakh-Gilgit-Baltistan-Muzaffarabad, Punjab and Rajasthan.
 - ❖ **Thunderstorm accompanied with lightning & gusty winds(40-50kmph)** very likely at isolated places over Andhra Pradesh, Bihar, Haryana, Chandigarh & Delhi, Himachal Pradesh, Jammu-Kashmir-Ladakh-Gilgit-Baltistan-Muzaffarabad, Kerala & Mahe, Madhya Maharashtra, Marathwada, Punjab, Rajasthan, Telangana and Uttarakhand.
 - ❖ **Thunderstorm accompanied with lightning & gusty winds(30-40kmph)** very likely at isolated places over Arunachal Pradesh, Assam & Meghalaya, Chhattisgarh, Gujarat State, Jharkhand, Karnataka, Madhya Pradesh, Nagaland, Manipur, Mizoram and Tripura, Odisha, West Bengal & Sikkim and West Uttar Pradesh.
 - ❖ **Thunderstorm accompanied with Lightning** very likely at isolated places over Tamil Nadu Puducherry & Karaikal.
-
- ❖ **Squally wind with speed 45 to 55 kmph gusting to 65 kmph** is likely to prevail along and off the Oman coast, Gulf of Oman, along & off west Pakistan coast adjoining northwest Arabian Sea and over Gangetic West Bengal.

***Red color warning does not mean "Red Alert" Red color warning means "Take Action"**
Forecast and warning for any day is valid from 0830 hours IST of day till 0830 hours IST of next day
For more details kindly visit <https://mausam.imd.gov.in> or contact 011-2434-4599

(Service to the nation since 1875)



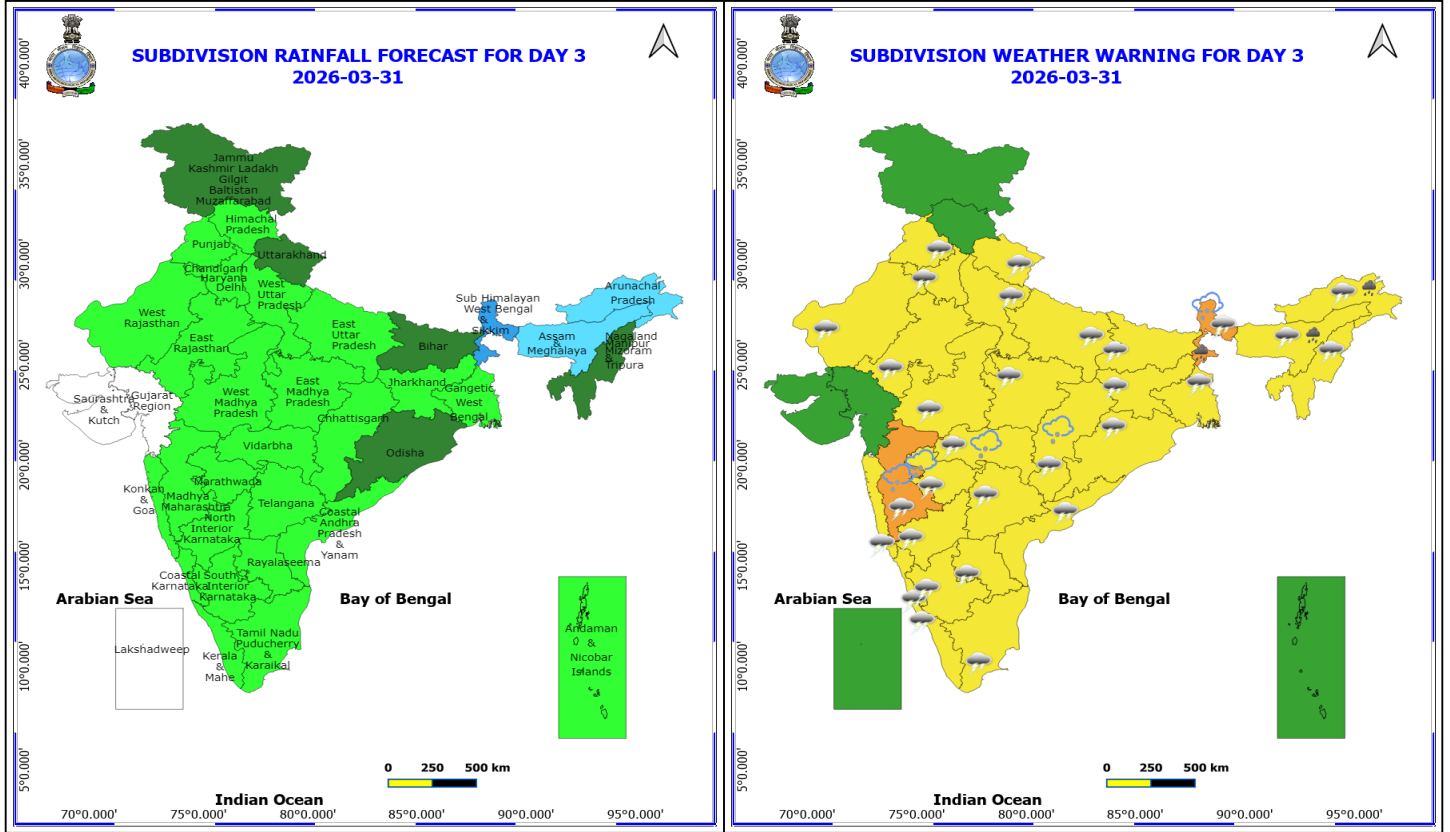
30 March (Day 2)

- ❖ **Heavy Rainfall** very likely at isolated places over Assam & Meghalaya, Jammu-Kashmir-Ladakh-Gilgit-Baltistan-Muzaffarabad and Nagaland, Manipur, Mizoram and Tripura.
- ❖ **Thunderstorm accompanied with Hailstorm** very likely at isolated places over East Rajasthan, Haryana, Chandigarh & Delhi, Himachal Pradesh, Madhya Maharashtra, Marathwada, Punjab, Uttarakhand and West Madhya Pradesh.
- ❖ **Thunderstorm accompanied with lightning & gusty winds(40-50kmph)** very likely at isolated places over Andhra Pradesh, East Rajasthan, Haryana, Chandigarh & Delhi, Himachal Pradesh, Jammu-Kashmir-Ladakh-Gilgit-Baltistan-Muzaffarabad, Madhya Maharashtra, Madhya Pradesh, Marathwada, Punjab, Telangana, Uttarakhand and West Uttar Pradesh.
- ❖ **Thunderstorm accompanied with lightning & gusty winds(30-40kmph)** very likely at isolated places over Assam & Meghalaya, Chhattisgarh, East Uttar Pradesh, Gujarat State, Karnataka, Nagaland, Manipur, Mizoram and Tripura, Odisha, Sub Himalayan West Bengal & Sikkim, Vidarbha and West Rajasthan.
- ❖ **Thunderstorm accompanied with Lightning** very likely at isolated places over Arunachal Pradesh and Kerala & Mahe.

No Fishermen Warning

***Red color warning does not mean "Red Alert" Red color warning means "Take Action"**
Forecast and warning for any day is valid from 0830 hours IST of day till 0830 hours IST of next day
For more details kindly visit <https://mausam.imd.gov.in> or contact 011-2434-4599

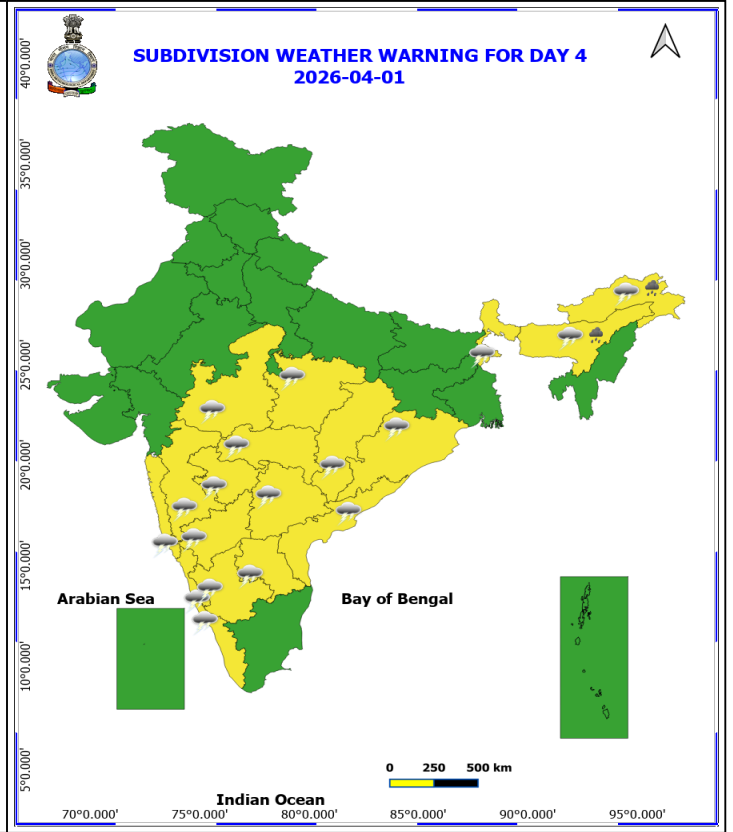
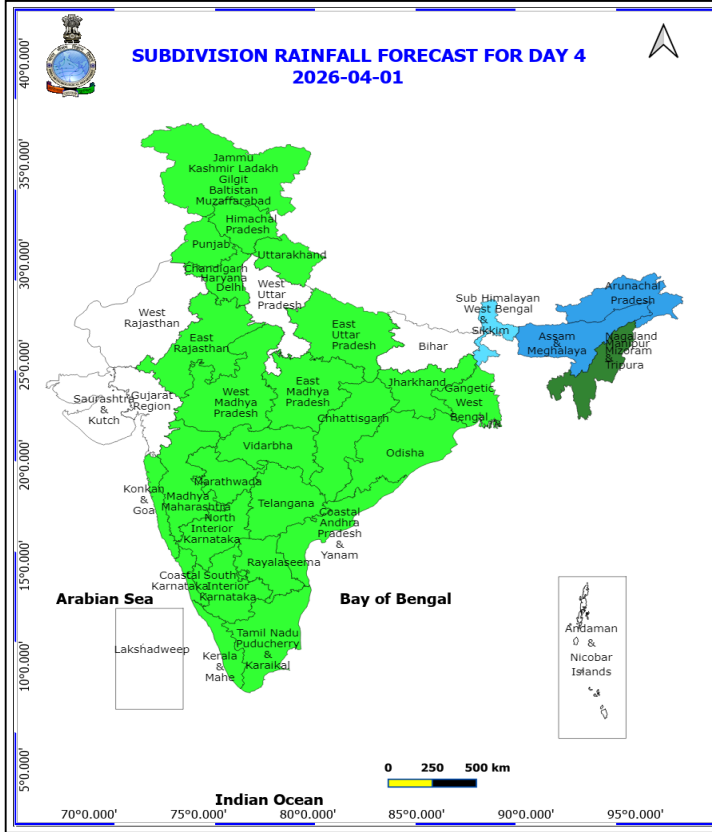
(Service to the nation since 1875)



31 March (Day 3)

- ❖ **Heavy Rainfall** very likely at isolated places over Arunachal Pradesh, Assam & Meghalaya and Sub Himalayan West Bengal & Sikkim.
- ❖ **Thunderstorm accompanied with Hailstorm** very likely at isolated places over Chhattisgarh, Maharashtra and Sub Himalayan West Bengal & Sikkim.
- ❖ **Thundersquall with wind speed reaching(50-60kmph)** very likely at isolated places over Bihar and Gangetic West Bengal.
- ❖ **Thunderstorm accompanied with lightning & gusty winds(40-50kmph)** very likely at isolated places over Andhra Pradesh, Assam & Meghalaya, Chhattisgarh, Jharkhand, Madhya Pradesh, Maharashtra, Odisha, Sub Himalayan West Bengal & Sikkim and Uttarakhand.
- ❖ **Thunderstorm accompanied with lightning & gusty winds(30-40kmph)** very likely at isolated places over Haryana, Chandigarh & Delhi, Karnataka, Nagaland, Manipur, Mizoram and Tripura, Punjab and Telangana.
- ❖ **Thunderstorm accompanied with Lightning** very likely at isolated places over Arunachal Pradesh, Kerala & Mahe, Konkan & Goa, Rajasthan, Tamil Nadu Puducherry & Karaikal and Uttar Pradesh.

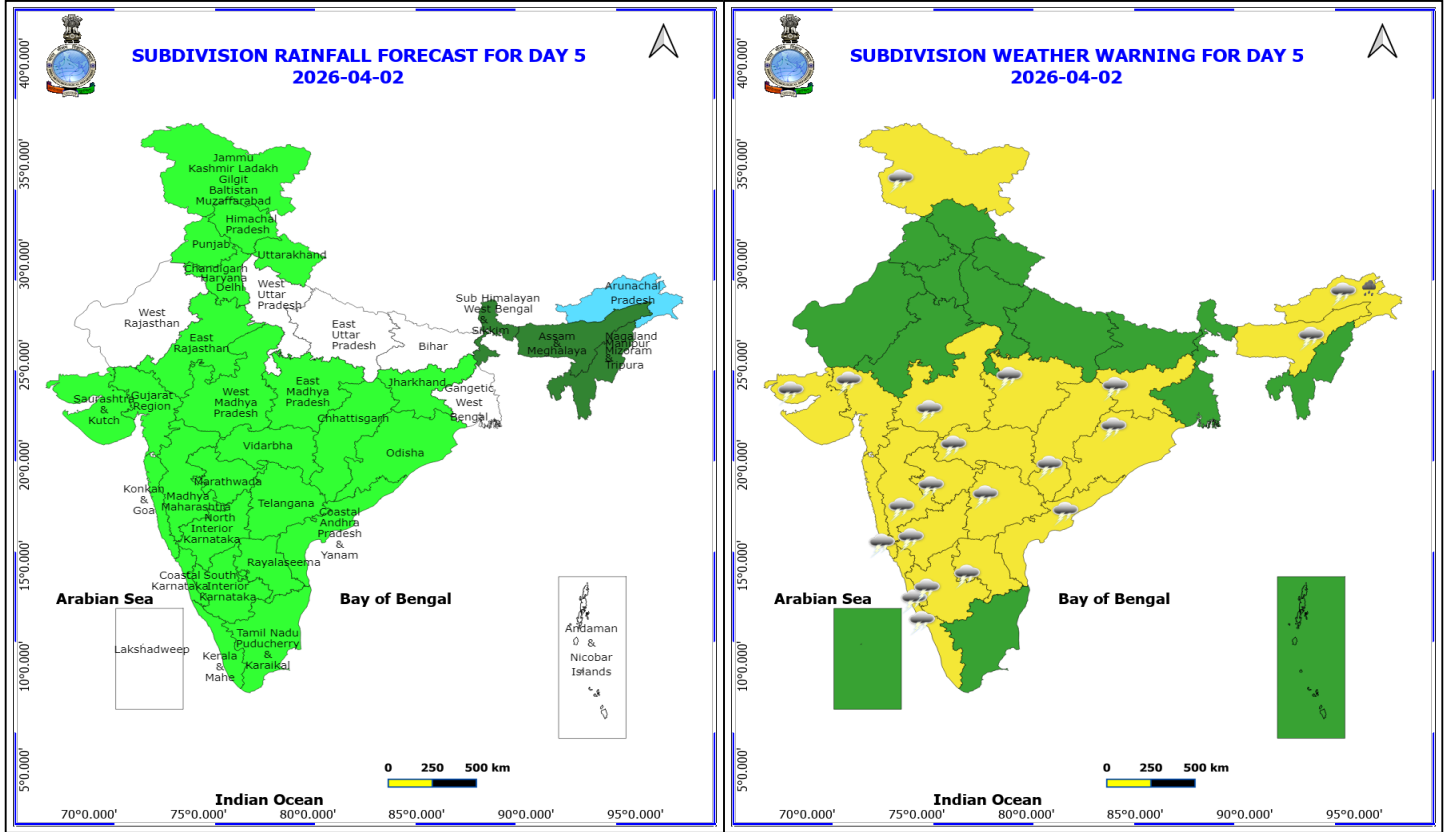
No Fishermen Warning



1 April (Day 4)

- ❖ **Heavy Rainfall** likely at isolated places over Arunachal Pradesh and Assam & Meghalaya.
- ❖ **Thunderstorm accompanied with lightning & gusty winds(40-50kmph)** likely at isolated places over Assam & Meghalaya, Chhattisgarh, Madhya Pradesh, Marathwada and Vidarbha.
- ❖ **Thunderstorm accompanied with lightning & gusty winds(30-40kmph)** likely at isolated places over Andhra Pradesh, Karnataka, Odisha, Sub Himalayan West Bengal & Sikkim and Telangana.
- ❖ **Thunderstorm accompanied with Lightning** likely at isolated places over Arunachal Pradesh, Kerala & Mahe, Konkan & Goa and Madhya Maharashtra.

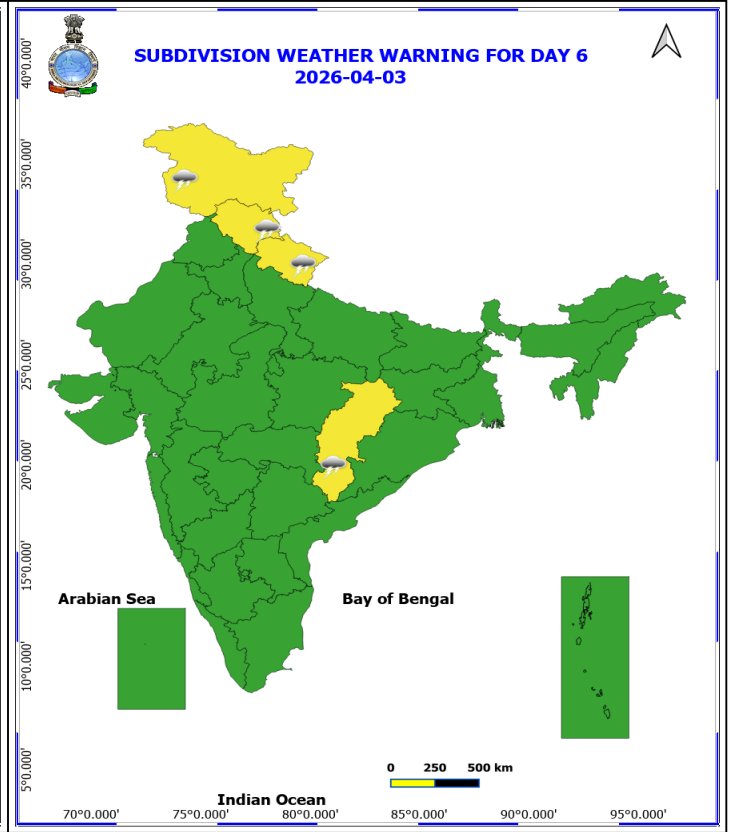
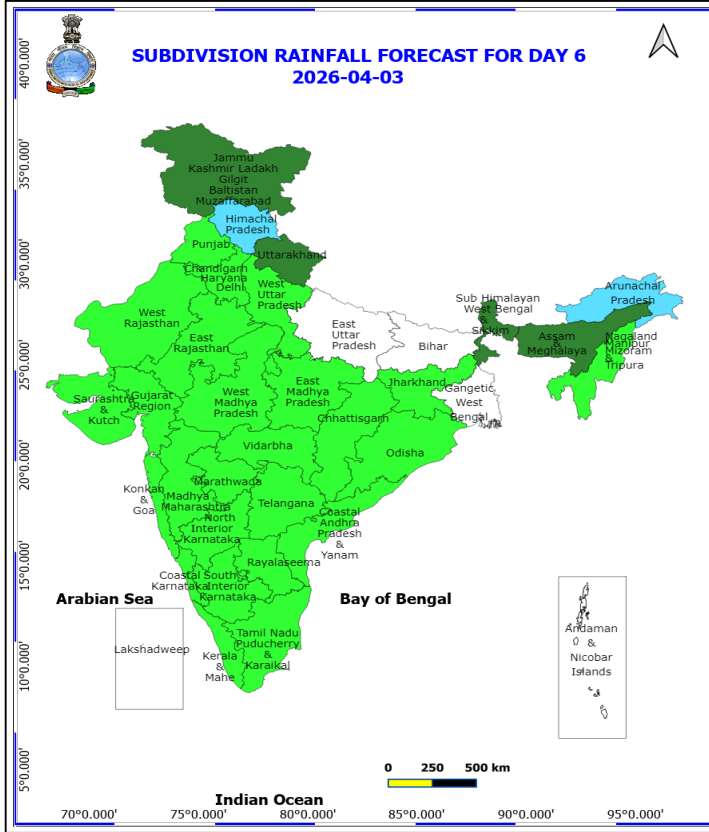
No Fishermen Warning



2 April (Day 5)

- ❖ **Heavy Rainfall** likely at isolated places over Arunachal Pradesh.
- ❖ **Thunderstorm accompanied with lightning & gusty winds(40-50kmph)** likely at isolated places over Assam & Meghalaya, Chhattisgarh, Jammu-Kashmir-Ladakh-Gilgit-Baltistan-Muzaffarabad, Madhya Pradesh, Marathwada and Vidarbha.
- ❖ **Thunderstorm accompanied with lightning & gusty winds(30-40kmph)** likely at isolated places over Andhra Pradesh, Gujarat State, Jharkhand, Karnataka, Odisha and Telangana.
- ❖ **Thunderstorm accompanied with Lightning** likely at isolated places over Arunachal Pradesh, Kerala & Mahe, Konkan & Goa and Madhya Maharashtra.

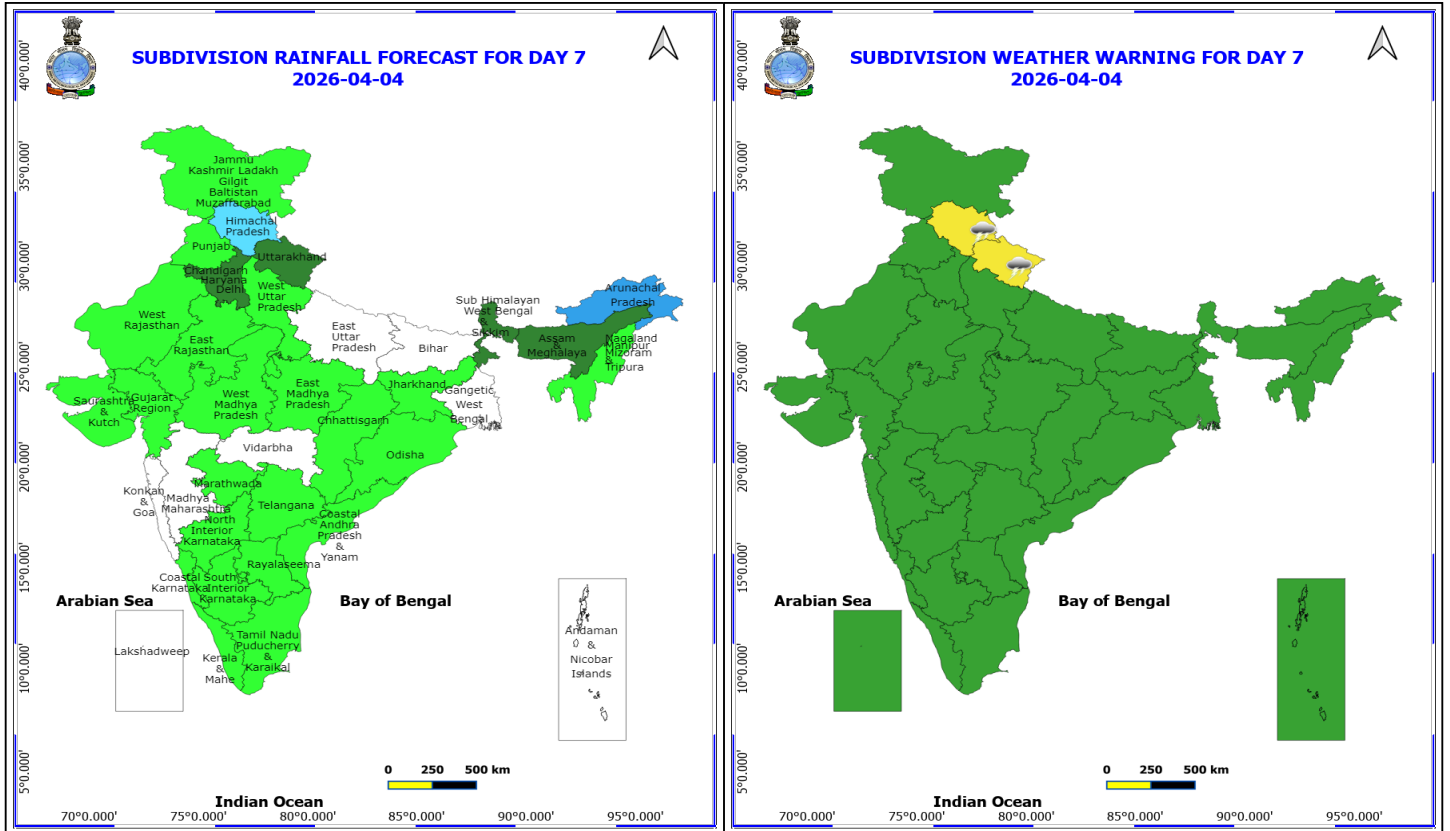
No Fishermen Warning



3 April (Day 6)

- ❖ **Thunderstorm accompanied with lightning & gusty winds(40-50kmph)** likely at isolated places over Chhattisgarh, Himachal Pradesh and Jammu-Kashmir-Ladakh-Gilgit-Baltistan-Muzaffarabad.
- ❖ **Thunderstorm accompanied with lightning & gusty winds(30-40kmph)** likely at isolated places over Uttarakhand.

No Fishermen Warning



4 April (Day 7)

- ❖ **Thunderstorm accompanied with lightning & gusty winds(40-50kmph) likely at isolated places over Himachal Pradesh.**
- ❖ **Thunderstorm accompanied with lightning & gusty winds(30-40kmph) likely at isolated places over Uttarakhand.**

No Fishermen Warning

***Red color warning does not mean "Red Alert" Red color warning means "Take Action"**
Forecast and warning for any day is valid from 0830 hours IST of day till 0830 hours IST of next day
For more details kindly visit <https://mausam.imd.gov.in> or contact 011-2434-4599
(Service to the nation since 1875)



Table-1

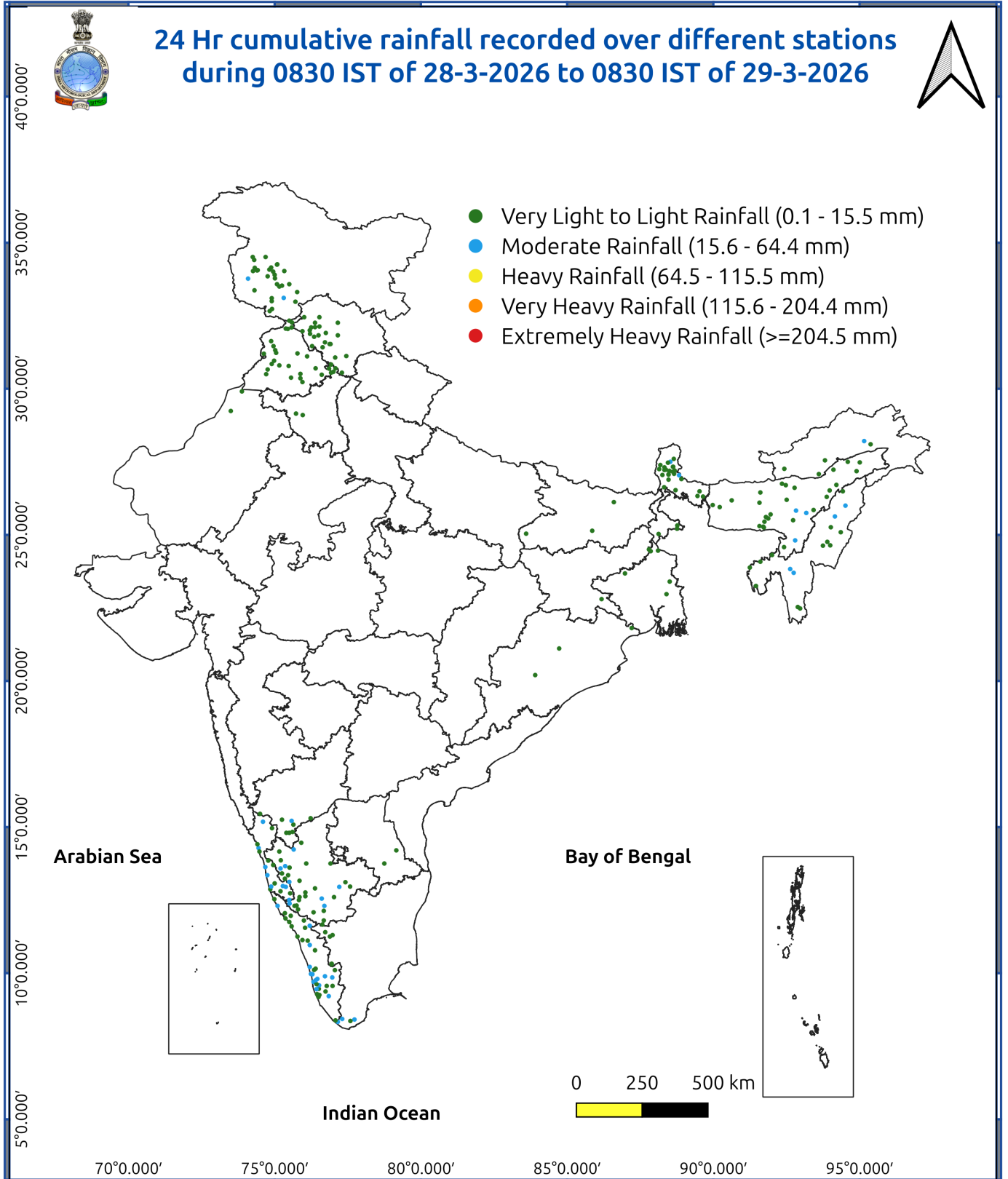
7 Days Rainfall Forecast

S.No.	Subdivision	29- Mar	30- Mar	31- Mar	1- Apr	2- Apr	3- Apr	4- Apr
		Day 1	Day 2	Day 3	Day 4	Day 5	Day 6	Day 7
1	ANDAMAN & NICOBAR ISLANDS	ISOL	ISOL	ISOL	DRY	DRY	DRY	DRY
2	ARUNACHAL PRADESH	FWS	FWS	FWS	WS	FWS	FWS	WS
3	ASSAM & MEHGHALAYA	WS	FWS	FWS	WS	SCT	SCT	SCT
4	N. M. M. & T.	FWS	FWS	SCT	SCT	SCT	ISOL	ISOL
5	S.H. WEST BENGAL & SIKKIM	FWS	SCT	WS	FWS	SCT	SCT	SCT
6	GANGETIC WEST BENGAL	ISOL	ISOL	ISOL	ISOL	DRY	DRY	DRY
7	ODISHA	ISOL	SCT	SCT	ISOL	ISOL	ISOL	ISOL
8	JHARKHAND	ISOL	DRY	ISOL	ISOL	ISOL	ISOL	ISOL
9	BIHAR	ISOL	ISOL	SCT	DRY	DRY	DRY	DRY
10	EAST UTTAR PRADESH	DRY	ISOL	ISOL	ISOL	DRY	DRY	DRY
11	WEST UTTAR PRADESH	ISOL	SCT	ISOL	DRY	DRY	ISOL	ISOL
12	UTTARAKHAND	SCT	SCT	SCT	ISOL	ISOL	SCT	SCT
13	HARYANA, CHD & DELHI	SCT	SCT	ISOL	ISOL	ISOL	ISOL	SCT
14	PUNJAB	SCT	SCT	ISOL	ISOL	ISOL	ISOL	ISOL
15	HIMACHAL PRADESH	FWS	FWS	ISOL	ISOL	ISOL	FWS	FWS
16	JAMMU AND KASHMIR AND LADAKH	WS	WS	SCT	ISOL	ISOL	SCT	ISOL
17	WEST RAJASTHAN	ISOL	ISOL	ISOL	DRY	DRY	ISOL	ISOL
18	EAST RAJASTHAN	ISOL	SCT	ISOL	ISOL	ISOL	ISOL	ISOL
19	WEST MADHYA PRADESH	ISOL	SCT	ISOL	ISOL	ISOL	ISOL	ISOL
20	EAST MADHYA PRADESH	DRY	ISOL	ISOL	ISOL	ISOL	ISOL	ISOL
21	GUJRAT REGION	ISOL	ISOL	DRY	DRY	ISOL	ISOL	ISOL
22	SAURASHTRA & KUTCH	ISOL	ISOL	DRY	DRY	ISOL	ISOL	ISOL
23	KONKAN & GOA	DRY	ISOL	ISOL	ISOL	ISOL	ISOL	DRY
24	MADHYA MAHARASHTRA	ISOL	ISOL	ISOL	ISOL	ISOL	ISOL	DRY
25	MARATHWADA	ISOL	ISOL	ISOL	ISOL	ISOL	ISOL	ISOL
26	VIDARBHA	DRY	ISOL	ISOL	ISOL	ISOL	ISOL	DRY
27	CHATTISGARH	ISOL	ISOL	ISOL	ISOL	ISOL	ISOL	ISOL
28	COASTAL ANDHRA PRADESH	ISOL	ISOL	ISOL	ISOL	ISOL	ISOL	ISOL
29	TELANGANA	ISOL	ISOL	ISOL	ISOL	ISOL	ISOL	ISOL
30	RAYALASEEMA	ISOL	ISOL	ISOL	ISOL	ISOL	ISOL	ISOL
31	TAMILNADU & PUDUCHERRY	ISOL	ISOL	ISOL	ISOL	ISOL	ISOL	ISOL
32	COSTAL KARNATAKA	ISOL	ISOL	ISOL	ISOL	ISOL	ISOL	ISOL
33	NORTH INTERIOR KARNATAKA	ISOL	ISOL	ISOL	ISOL	ISOL	ISOL	ISOL
34	SOUTH INTERIOR KARNATAKA	ISOL	ISOL	ISOL	ISOL	ISOL	ISOL	ISOL
35	KERALA	SCT	ISOL	ISOL	ISOL	ISOL	ISOL	ISOL
36	LAKSHDWEEP	SCT	DRY	DRY	DRY	DRY	DRY	DRY

Legend	Category	%Stations
WS	Widespread/Most Places	76-100
FWS	Fairly Widespread/Many Places	51-75
SCT	Scattered/ A Few Places	26-50
ISOL	Isolated Places	1-25
DRY	No Rain	0

*Red color warning does not mean "Red Alert" Red color warning means "Take Action"
Forecast and warning for any day is valid from 0830 hours IST of day till 0830 hours IST of next day
For more details kindly visit <https://mausam.imd.gov.in> or contact 011-2434-4599

(Service to the nation since 1875)



Impact and Actions

Impact & Action Suggested due to heavy/very heavy rainfall:

- **Isolated heavy rainfall/snowfall** likely over Kashmir valley on 30th March
- **Isolated heavy rainfall with hailstorm activity** likely over Sub-Himalayan West Bengal & Sikkim on 31st March.
- **Isolated heavy rainfall** likely over Arunachal Pradesh and Assam & Meghalaya during 30th March -01st April and Nagaland, Manipur, Mizoram & Tripura on 30th March.

Impact Expected

- Localized Flooding of roads, water logging in low lying areas and closure of underpasses mainly in urban areas of the above region.
- Occasional reduction in visibility due to heavy rainfall.
- Disruption of traffic in major cities due to water logging in roads leading to increased travel time.
- Minor damage to kutcha roads.
- Possibilities of damage to vulnerable structure.
- Localized Landslides/Mudslides
- Damage to horticulture and standing crops in some areas due to inundation.
- It may lead to riverine flooding in some river catchments (for riverine flooding please visit Web page of CWC).

Action Suggested

- Check for traffic congestion on your route before leaving for your destination.
- Follow any traffic advisories that are issued in this regard.
- Avoid going to areas that face the water logging problems often.
- Avoid staying in vulnerable structure.

Impact expected and action suggested due to

- **Isolated hailstorm activity** also likely over Jammu-Kashmir and West Rajasthan on 29th; Himachal Pradesh, Punjab and East Rajasthan on 29th & 30th; Uttarakhand on 30th March.
- **Isolated hailstorm activity** likely over West Madhya Pradesh on 30th March and Vidarbha & Chhattisgarh on 31st March.
- **Isolated hailstorm activity** likely over Madhya Maharashtra and Marathawada on 30th & 31st March.
- **Isolated to Scattered** light to moderate rainfall with **thunderstorm, lightning & gusty winds speed reaching (40-50 gusting to 60 kmph)** likely over Gangetic West Bengal and Bihar on 31st March.
- **Thundersquall (wind speed reaching 50-60 kmph gusting to 70 kmph)** likely over Gangetic West Bengal and Bihar on 31st March.

Impact expected:

- Breaking of tree branches, uprooting of large avenue trees. Large dead limbs blown from trees. Damage to Standing crops.
- Minor to Major damage to banana and papaya trees.
- Minor to major damage to power and communication lines due to breaking of branches.
- Strong wind/hail may damage plantation, horticulture and standing crops.
- Hail may injure people and cattle at open places.
- Partial damage to vulnerable structures due to strong winds.
- Minor damage to kutcha houses/walls and huts.
- Loose objects may fly.

Action suggested:

***Red color warning does not mean "Red Alert" Red color warning means "Take Action"**
Forecast and warning for any day is valid from 0830 hours IST of day till 0830 hours IST of next day
For more details kindly visit <https://mausam.imd.gov.in> or contact 011-2434-4599

(Service to the nation since 1875)

- People are advised to keep a watch on the weather for worsening conditions and be ready to move to safer places accordingly.
- Stay indoors, close windows & doors and avoid travel if possible.
- Take safe shelters; do not take shelter under trees.
- Do not lie on concrete floors and do not lean against concrete walls.
- Unplug electrical/ electronic appliances.
- Immediately get out of water bodies.
- Keep away from all the objects that conduct electricity.

Agromet advisories for various parts of the country

Agromet advisories for likely impact of Hailstorms

Use hail nets or hail caps in fruit orchards and vegetable plants to protect them from mechanical damage in **Jammu & Kashmir, Himachal Pradesh, Punjab, Haryana, Rajasthan, Sub Himalayan West Bengal, West Madhya Pradesh, Madhya Maharashtra, Marathwada Vidarbha and Chhattisgarh**. Undertake harvesting of mature crops immediately and shift them to safer places.

In **Madhya Maharashtra, Marathwada and Vidarbha**, harvest mature wheat, sorghum, safflower, chickpea, maize, linseed, fruits and vegetables and keep the harvested produce in safe places.

In **Uttarakhand**, harvest matured mustard, rapeseed, lentil & pea and keep the harvested produce to safe places.

Agromet advisories for likely impact of Heavy Rainfall

In **Sub Himalayan West Bengal**, ensure proper drainage channel, and drain out excess water from fields of rice, maize, other standing crops, vegetables and orchard. Shift the harvested produce to safe places. Cover the nursery of cucurbits and Dalle khorsani with polyethylene sheets or agro-nets.

In **Arunachal Pradesh**, undertake harvesting of cabbage, pea, mustard and late-maturing paddy varieties and digging of potatoes. Shift the harvested produce to safe places. Maintain proper drainage channels in the fields of rice, maize, other standing crops, vegetables and orchards.

In **Assam**, drain out excess rainwater from the standing crop fields.

In **Meghalaya**, ensure proper drainage in summer vegetable crops. Carry out staking and propping of plantation crops and protect young seedlings from heavy rainfall. Keep the harvested pods of garden peas in safer place immediately.

In **Tripura**, make necessary arrangements to drain out excess water from the low lying areas to prevent water logging.

In **Manipur**, harvest mature rapeseed/ mustard, field pea, lentil and onion before rain. Shift the harvested produce to an airy shed to protect it from rain, and sun-dry it when sunshine is available. Make necessary arrangements to drain out excess water from standing crops, vegetables & orchards to avoid water stagnation.

In **Jammu & Kashmir**, make necessary arrangements to drain out excess rain water from wheat, gram, mustard and vegetable fields.

Agromet advisories for likely impact of Thunderstorm / Gusty Winds

Shift the harvested produce in safer places or cover the produce with tarpaulin sheets in the fields. Tie the harvested crops properly and cover them to minimise the risk of displacement due to strong surface winds.

Provide mechanical support to horticultural crops and staking or support to vegetables and young fruit plants / fruit-

***Red color warning does not mean "Red Alert" Red color warning means "Take Action"**

Forecast and warning for any day is valid from 0830 hours IST of day till 0830 hours IST of next day

For more details kindly visit <https://mausam.imd.gov.in> or contact 011-2434-4599

(Service to the nation since 1875)



bearing plants to avoid lodging due to strong winds.

Livestock / Poultry

Keep the animals inside the shed during Heavy Rainfall/Hailstorm period and provide them balanced feed. Store feed and fodder in a safe place to prevent spoilage.

LEGENDS

- 1 अंडमान और निकोबार द्वीप समुह
- 2 अरुणाचल प्रदेश
- 3 असम और मेघालय
- 4 नागालैंड मनीपुर मीजोरम और त्रिपुरा
- 5 उप हिमालय पश्चिम बंगाल एवं सिक्किम
- 6 पश्चिम बंगाल
- 7 ओडिसा
- 8 झारखंड
- 9 बिहार
- 10 पूर्वी उत्तर प्रदेश
- 11 पश्चिम उत्तर प्रदेश
- 12 उत्तराखंड
- 13 हरियाणा चंडिगढ़ एवं दिल्ली
- 14 पंजाब
- 15 हिमाचल प्रदेश
- 16 जम्मू एवं कश्मीर एवं लद्दाख
- 17 पश्चिम राजस्थान
- 18 पूर्वी राजस्थान
- 19 पश्चिम मध्य प्रदेश
- 20 पूर्वी मध्य प्रदेश
- 21 गुजरात क्षेत्र
- 22 सौराष्ट्र एवं कच्छ
- 23 कोंकण एवं गोवा
- 24 मध्य महाराष्ट्र
- 25 मराठावाडा
- 26 विदर्भ
- 27 छत्तीसगढ़
- 28 तटीय आंध्र प्रदेश एवं यनम
- 29 तेलंगाना
- 30 रायलसीमा
- 31 तमिलनाडु, पुदुचेरी एवं कराईकल
- 32 तटिय कर्नाटक
- 33 आंतरिक उत्तरी कर्नाटक
- 34 आंतरिक दक्षिणी कर्नाटक
- 35 केरल एवं माहे
- 36 लक्षद्वीप



1. Andaman & Nicobar Islands
2. Arunachal Pradesh
3. Assam & Meghalaya
4. Nagaland, Manipur, Mizoram & Tripura
5. Sub-Himalayan West Bengal & Sikkim
6. Gangetic West Bengal
7. Orissa
8. Jharkhand
9. Bihar
10. East Uttar Pradesh
11. West Uttar Pradesh
12. Uttarakhand
13. Haryana, Chd & Delhi
14. Punjab
15. Himachal Pradesh
16. Jammu & Kashmir and Ladakh
17. West Rajasthan
18. East Rajasthan
19. West Madhya Pradesh
20. East Madhya Pradesh
21. Gujarat
22. Saurashtra
23. Konkan & Goa
24. Madhya Maharashtra
25. Marathawada
26. Vidharbha
27. Chhattisgarh
28. Coastal Andhra Pradesh & Yanam
29. Telangana
30. Rayalaseema
31. Tamilnadu, Puducherry & Karaikal
32. Coastal Karnataka
33. North Interior Karnataka
34. South Interior Karnataka
35. Kerala & Mahe
36. Lakshadweep

SPATIAL DISTRIBUTION (% of Stations reporting)

% Stations	Category	% Stations	Category
76-100	Widespread (WS/ Most Places)	26-50	Scattered (SCT/ A Few Places)
51-75	Fairly Widespread (FWS/ Many Places)	1-25	Isolated (ISOL)

Subdivision Colour

- NO WARNING
- WATCH (BE UPDATED)
- ALERT (BE PREPARED TO TAKE ACTION)
- WARNING (TAKE ACTION)

Probabilistic Forecast

Terms	Probability of Occurrence (%)
Unlikely	< 25
Likely	25 - 50
Very Likely	50 - 75
Most Likely	> 75

- | | | | |
|--------------------------|-----------------|----------------------|--------------------|
| Heavy Rain | Very Heavy Rain | Extremely Heavy Rain | Heavy Snow |
| Thunderstorm & Lightning | Hailstorm | Dust Storm | Dust Raising Winds |
| Strong surface winds | Heat Wave | Hot Day | Warm Night |
| Cold Wave | Cold Day | Ground Frost | Fog |
| Hot & Humid | | | |

*Red color warning does not mean "Red Alert" Red color warning means "Take Action"

Forecast and warning for any day is valid from 0830 hours IST of day till 0830 hours IST of next day

For more details kindly visit <https://mausam.imd.gov.in> or contact 011-2434-4599

(Service to the nation since 1875)

LEGENDS

WARNING

WARNING (TAKE ACTION)
ALERT (BE PREPARED)
WATCH (BE UPDATED)
NO WARNING (NO ACTION)

Probabilistic Forecast

Terms	Probability of Occurrence (%)
Unlikely	< 25
Likely	25 - 50
Very Likely	50 - 75
Most Likely	> 75



Heavy: 64.5 to 115.5 mm/cm *
Very Heavy: 115.6 to 204.4 mm/cm*
Extremely Heavy: > 204.4 mm/cm *



When maximum temperature of a station reaches $\geq 40^{\circ}\text{C}$ for plains and $\geq 30^{\circ}\text{C}$ for hilly regions
(a) Based on Departure from normal

Heat Wave: Maximum Temperature Departure from normal 4.5°C to 6.4°C .
Severe Heat Wave: Maximum Temperature Departure from normal $\geq 6.5^{\circ}\text{C}$

(b). Based on Actual maximum temperature

Heat Wave: When actual maximum temperature $\geq 45^{\circ}\text{C}$.
Severe Heat Wave: When actual maximum temperature $\geq 47^{\circ}\text{C}$

(c). Criteria for heat wave for coastal stations

When maximum temperature departure is $> 4.5^{\circ}\text{C}$ from normal. Heat Wave may be described provided maximum temperature $\geq 37^{\circ}\text{C}$



When maximum temperature remains 40°C

Warm Night: When minimum temperature departure 4.5°C to 6.4°C .
Severe Warm Night: When minimum temperature departure $> 6.4^{\circ}\text{C}$.



When minimum temperature of a station $\leq 10^{\circ}\text{C}$ for plains and $\leq 0^{\circ}\text{C}$ for hilly regions.
(a). Based on departure

Cold Wave: Minimum Temperature Departure from normal -4.5°C to -6.4°C .
Severe Cold Wave: Minimum Temperature Departure from normal $\leq -6.5^{\circ}\text{C}$

(b) Based on actual Minimum Temperature (for Plains only)

Cold Wave : When Minimum Temperature is $\leq 4.0^{\circ}\text{C}$
Severe Cold Wave: When Minimum Temperature is $\leq 2.0^{\circ}\text{C}$

(c) For Coastal Stations

When Minimum Temperature departure is $\leq -4.5^{\circ}\text{C}$ & actual Minimum Temperature is $\leq 15^{\circ}\text{C}$



When minimum temperature of a station $\leq 10^{\circ}\text{C}$ for plains and $\leq 0^{\circ}\text{C}$ for hilly regions
Based on departure

Cold Day: Maximum Temperature Departure from normal -4.5°C to -6.4°C .
Severe Cold Day: Maximum Temperature Departure from normal $\leq -6.5^{\circ}\text{C}$



Phenomenon of small droplets suspended in air and the horizontal visibility $< 1\text{km}$

Moderate Fog: When the visibility between 500-200 metres
Dense Fog: when the visibility between 50- 200 metres
Very Dense Fog: when the visibility < 50 metres



Sudden electrical discharges manifested by a flash of light (Lightning) and a sharp rumbling sound (thunder)



An ensemble of particles of dust or sand energetically lifted to great heights by a strong and turbulent wind.



Ice deposits on ground

Air temperature $\leq 4^{\circ}\text{C}$ (over Plains)



A strong wind that rises suddenly, lasts for atleast 1 minute.

Moderate: Wind speed 52-61 kmph
Severe: Wind speed 62-87 kmph
Very Severe: Wind speed > 87 kmph



Effect of various waves in the sea over specific area

Rough to very rough: Wind speed 41-62 kmph (22-33 knots) & Wave height 2.5-6 metre
High to very high: Wind speed 63-117 kmph (34-63 knots) & Wave height 6-14 metre
Phenomenal: Wind speed > 117 kmph (> 63 knots) & Wave height > 14 metre



Cyclonic Storm: Wind speed 62-87 kmph (34-47 knots)
Severe Cyclonic Storm: Wind speed 88-117 kmph (48-63 knots)
Very Severe Cyclonic Storm: Wind speed 118-165 kmph (64 - 89 knots)
Extremely Severe Cyclonic Storm: Wind speed 166-220 kmph (90 -119 knots)
Super Cyclone Storm: Wind speed > 220 kmph (> 119 knots)

*Red color warning does not mean "Red Alert" Red color warning means "Take Action"

Forecast and warning for any day is valid from 0830 hours IST of day till 0830 hours IST of next day

For more details kindly visit <https://mausam.imd.gov.in> or contact 011-2434-4599

(Service to the nation since 1875)