

Friday, November 8, 2024
Time of Issue: 1345 hours IST
(MID-DAY)

ALL INDIA WEATHER SUMMARY AND FORECAST BULLETIN

Significant Weather Features:

Weather Systems:

- ❖ The cyclonic circulation over southwest Bay of Bengal persists & now extends upto 3.6 km above mean sea level. Under its influence a low pressure area is likely to form over southwest Bay of Bengal during the next 48 hours. It is likely to move nearly westwards towards Tamil Nadu/Sri Lanka coasts during subsequent two days.
- ❖ A trough runs from the above cyclonic circulation over southwest Bay of Bengal to eastcentral Bay of Bengal and extends upto middle tropospheric levels.

Forecast & Warnings (upto 7 days):

- ✓ Light to moderate rainfall at a few places accompanied with isolated thunderstorm and lightning very likely over Tamil Nadu, Puducherry & Karaikal and Kerala & Mahe during 08th-12th November.
- ✓ **Isolated very heavy rainfall** very likely over Tamil Nadu, Puducherry & Karaikal on 08th & 12th; Kerala & Mahe on 08th November.
- ✓ **Isolated heavy rainfall** very likely over Tamil Nadu during 08th -14th, Kerala & Mahe during 13th -14th & Coastal Andhra Pradesh & Yanam, Rayalaseema during 11th -13th November.
- ✓ **Isolated Dense Fog** likely to prevail over Himachal Pradesh on 09th & 10th November in the morning hours.

i. Temperature conditions and Forecast:

Temperature Conditions during past 24 hours till 0830 hours IST of today

There is no significant change in Minimum temperature over the country. Minimum temperatures continue to be above normal by 3-5°C over most places of Jammu-Kashmir-Ladakh-Gilgit-Baltistan-Muzaffarabad, Punjab, Haryana, Uttarakhand, Uttar Pradesh, Bihar, Jharkhand, Odisha, Rajasthan, northern parts of Gujarat and by 2-3°C over Coastal Andhra Pradesh & Yanam, Kerala & Mahe, south Gujarat and near normal over remaining parts of the country.

Forecast of temperature: Minimum temperature is likely to gradually fall by 2-4°C over Western Himalayan Region during next 5 days. No large change in Minimum temperature over remaining parts of the country during the week.

ii. Weather forecast over Delhi/NCR during 08th November to 11th November 2024

Past Weather:

There has been slight fall in maximum temperature over Delhi/NCR during past 24hr. The Maximum and Minimum temperature over Delhi is in the range of 30-32°C and 15-19°C respectively. The maximum temperature was above normal by 1 - 2°C and minimum temperature was above normal by 4-5°C over some places in the region. Mainly smog condition with predominant surface wind from variable directions with wind speed reaching 04-06 kmph prevailed during daytime and calm winds during night. The mainly smog condition with wind speed upto 04-06 kmph from variable directions over the region prevailed in the forenoon today.

Weather Forecast:

08.11.2024: Mainly clear sky. The predominant surface wind is likely to be from variable directions with wind speed upto 06 - 08 kmph till evening. It would decrease thereafter becoming less than 04 kmph from variable directions during night. Smog/ mist is likely in the evening/night.

09.11.2024: Mainly clear sky. The predominant surface wind is likely to be from variable directions with wind speed less than 04 kmph during morning hours. Smog/Shallow fog/mist in the morning. The wind speed will increase thereafter becoming less than 08 kmph from variable directions during afternoon. It will decrease thereafter becoming less than 04 kmph from variable directions during evening and night. Smog/ mist is likely in the evening/night.

10.11.2024: Mainly clear sky. The predominant surface wind is likely to be from variable directions with wind speed less than 04 kmph during morning hours. Smog/Shallow fog/mist in the morning. The wind speed will gradually increase becoming 06- 08 kmph from variable directions during afternoon. It will decrease thereafter becoming less than 06 kmph from variable directions during evening and night. Smog/ mist is likely in the evening/night.

11.11.2024: Mainly clear sky. The predominant surface wind is likely to be from variable directions with wind speed less than 04 kmph during morning hours. Smog/mist in the morning. The wind speed will increase thereafter becoming 06 - 10 kmph from southeast/east directions during afternoon. It will gradually decrease becoming 04 - 06 kmph from variable directions during evening and night. Smog/ mist is likely in the evening/night.

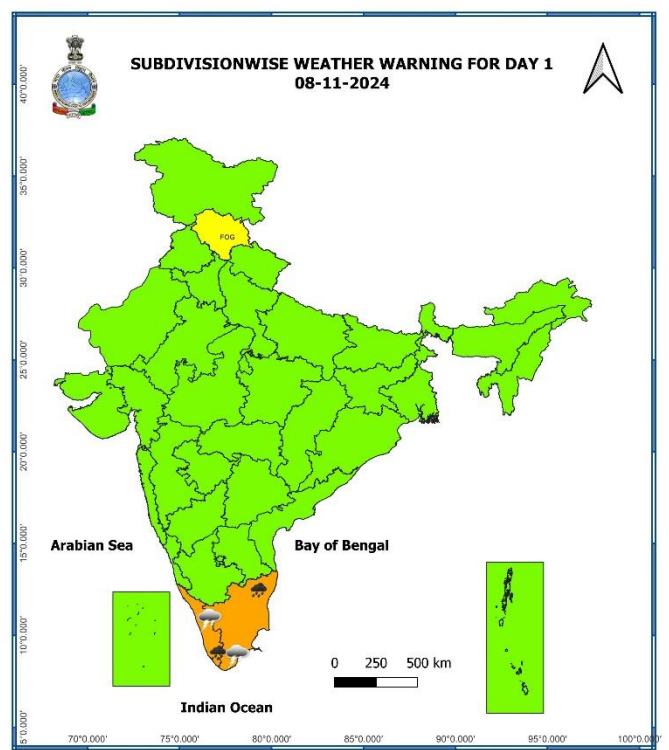
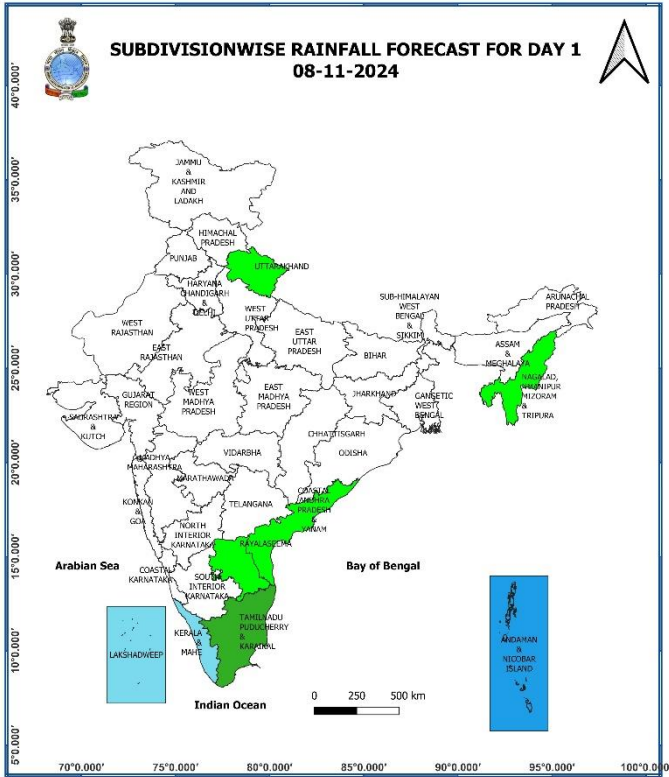
Main Weather Observations:

- ❖ **Rainfall distribution** (from 0830 hours IST of yesterday to 0830 hours IST of today): **at most places** over Andaman & Nicobar Islands; **at a few places** over Tamil Nadu, Puducherry & Karaikal, Kerala & Mahe; **at isolated places** over Arunachal Pradesh, Assam & Meghalaya, Nagaland, Manipur, Mizoram & Tripura, Madhya Maharashtra, Coastal Andhra Pradesh & Yanam, Rayalaseema, South Interior Karnataka, Lakshadweep.
- ❖ **Heavy rainfall recorded** (from 0830 hours IST of yesterday to 0830 hours IST of today): **Heavy rainfall** occurred at isolated places over Tamil Nadu, Puducherry & Karaikal, Kerala & Mahe, Rayalaseema.
- ❖ **Dense Fog** occurred at isolated places over Himachal Pradesh in the morning hours of today.
- ❖ **Significant amount of rainfall** (from 0830 hours IST of yesterday to 0830 hours IST of today) (in cm): **Tamil Nadu, Puducherry & Karaikal:** Zone 02 D15 Manali (dist Chennai) 11; Zone 03 Madhavaram (dist Chennai) 10; Sembanarkoil PWD (dist Mayiladuthurai), Velankanni (dist Nagapattinam), Madhavaram_CMWSSB (dist Chennai) 9 each; Zone 02 Manali (dist Chennai) 8; Zone 06 D65 Kolathur (dist Chennai), Thirparappu (dist Kanyakumari), Zone 01 Thiruvottiyur (dist Chennai), Good Will School Villivakkam ARG (dist Tiruvallur), Sirkali (dist Mayiladuthurai) 7 each; **Kerala & Mahe:** Mattanchery (Ernakulam district) 9.
- ❖ **Minimum Temperature Departures (as on 08-11-2024):** Minimum temperatures are **markedly above normal (5.1°C or more)** at a few places over Punjab, Bihar; at isolated places Uttar Pradesh, Himachal Pradesh, Uttarakhand, West Rajasthan, Haryana-Chandigarh-Delhi, East Madhya Pradesh; **appreciably above normal (3.1°C to 5.0°C)** at a few places over Jammu-Kashmir-Ladakh-Gilgit-Baltistan-Muzaffarabad, East Rajasthan, Jharkhand, West Bengal & Sikkim; at isolated places over Gujarat state, West Madhya Pradesh, Odisha; **above normal (1.6°C to 3.0°C)** at most places over Coastal Andhra Pradesh & Yanam, Kerala & Mahe; at a few places over Chhattisgarh, Arunachal Pradesh, Assam & Meghalaya, Rayalaseema, Tamil Nadu, Puducherry & Karaikal; at isolated places over Vidarbha, Madhya Maharashtra, Coastal Karnataka, South Interior Karnataka, Telangana, Nagaland, Manipur, Mizoram & Tripura. Today, **the lowest minimum temperature** of 14.6°C is reported at **Ridge (Delhi)** over the plains of the country. (Fig.4)
- ❖ **Maximum Temperature Departures (as on 07-11-2024):** Maximum temperatures were **markedly above normal (5.1°C or more)** at a few places over Jammu-Kashmir-Ladakh-Gilgit-Baltistan-Muzaffarabad; at isolated places Himachal Pradesh; **appreciably above normal (3.1°C to 5.0°C)** at a few places over West Rajasthan; at isolated places over East Rajasthan, Gujarat state, Coastal Andhra Pradesh & Yanam, Tamil Nadu, Puducherry & Karaikal; **above normal (1.6°C to 3.0°C)** at most places over Punjab, East Uttar Pradesh, Kerala & Mahe; at many places over Uttarakhand, Sub-Himalayan West Bengal & Sikkim, Telangana; at a few places over West Uttar Pradesh, Haryana-Chandigarh-Delhi, Chhattisgarh, Rayalaseema; at a isolated places over Madhya Pradesh, Bihar, Gangetic West Bengal, Odisha, Vidarbha, Konkan & Goa, Coastal Karnataka, South Interior Karnataka. These were **appreciably below normal (-5.0°C to -3.1°C)** at isolated places over Assam & Meghalaya; **below normal (-1.6°C to -3.0°C)** at isolated places over Arunachal Pradesh. Yesterday, **the highest maximum temperature** of 38.6°C was reported at **Deesa (Gujarat Region)** over the country. (Fig. 2)

Meteorological Analysis (Based on 0830 hours IST)

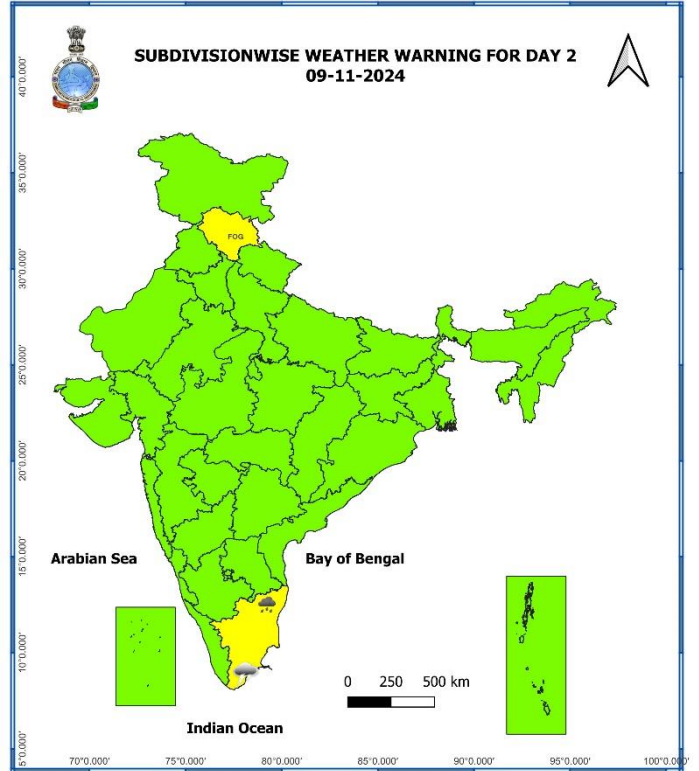
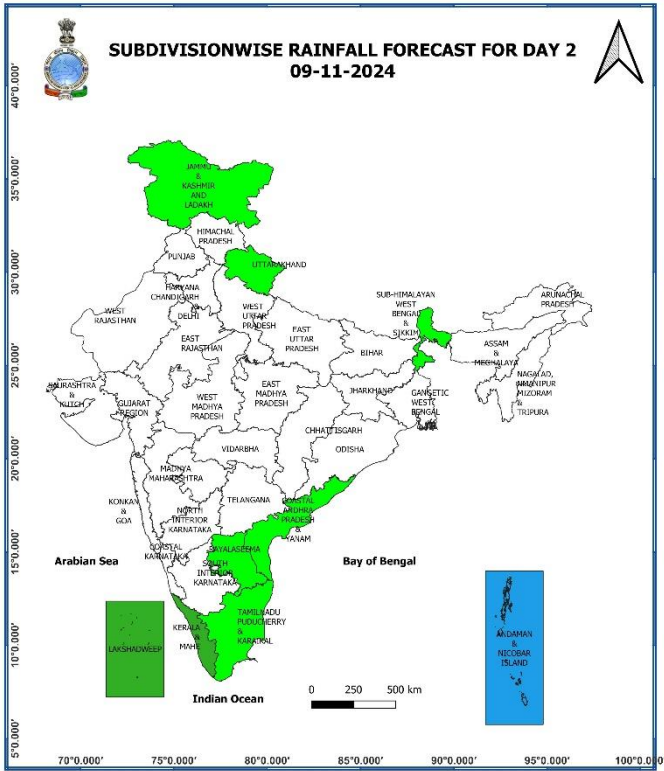
- ❖ The **cyclonic circulation** over southwest Bay of Bengal persists at 0830 hrs of IST and extends upto 3.6 km above mean sea level. Under its influence a low pressure area is likely to form over the same area during next 48 hours. It is likely to move slowly nearly westwards towards Tamil Nadu/Sri Lanka coasts during subsequent 2-days.
- ❖ The **trough** from Gulf of Mannar to eastcentral Bay of Bengal runs from the above cyclonic circulation over southwest Bay of Bengal to eastcentral Bay of Bengal and extends upto mid-tropospheric levels 3.1 km above mean sea level.
- ❖ A **cyclonic circulation** lies over southeast Arabian Sea & adjoining Lakshadweep area between 1.5 km & 3.1 km above mean sea level.
- ❖ The **north-south trough** in middle and upper tropospheric westerlies with its axis at 7.6 km above mean sea level roughly along Long. 92°E to the north of Lat. 23°N has moved away eastwards.
- ❖ The **cyclonic circulation** over Manipur & neighbourhood at 0.9 km above mean sea level has become less marked.

Weather Forecast & Warnings for next 7 days (Upto 0830 hours IST of 15th November, 2024)



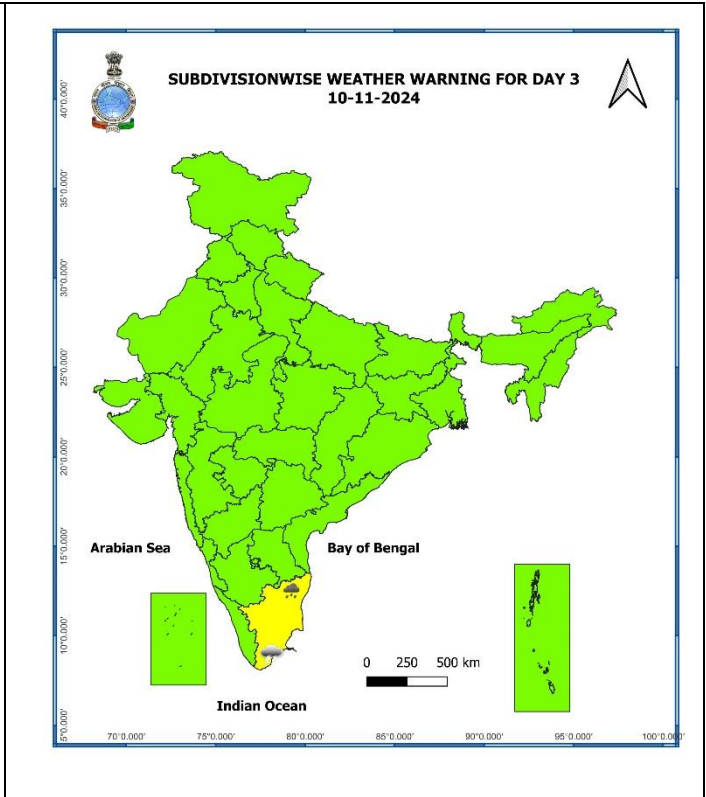
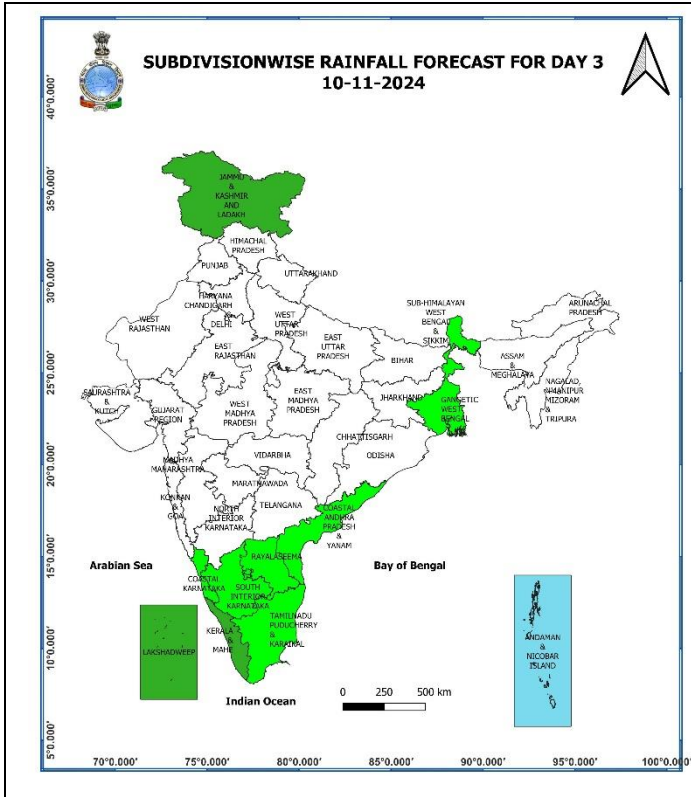
08 November (Day 1):

- ❖ **Heavy to very heavy rainfall (≥ 12 cm)** very likely at isolated places over Tamil Nadu, Puducherry & Karaikal, Kerala & Mahe.
- ❖ **Thunderstorm accompanied with lightning** very likely at isolated places over Tamil Nadu, Puducherry & Karaikal, Kerala & Mahe.
- ❖ **Dense fog conditions** very likely in isolated pockets of Himachal Pradesh in the morning hours.
- ❖ **Squally weather with wind speed 35-45 kmph gusting to 55 kmph** very likely over along and off Kerala coast and adjoining Lakshadweep area, many parts of southwest Bay of Bengal and adjoining areas of southeast and westcentral Bay of Bengal, parts of eastcentral Bay of Bengal, gulf of Mannar and Comorin area. Fishermen are advised not to venture into these areas.



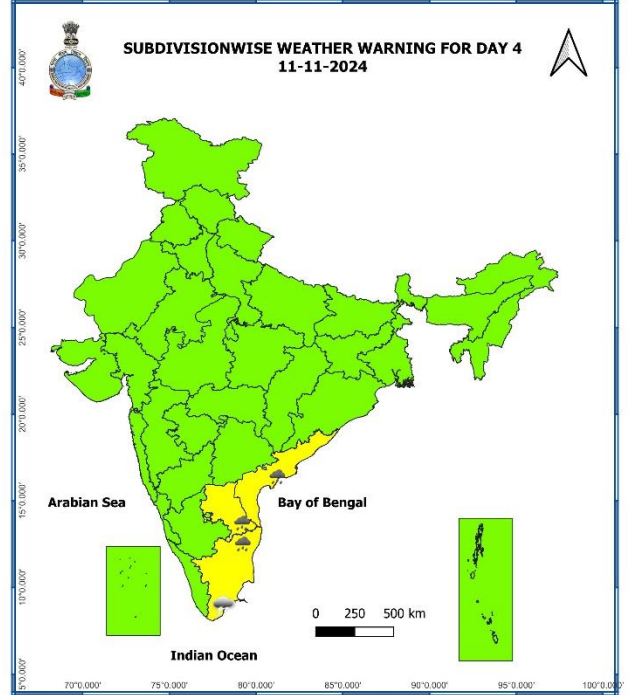
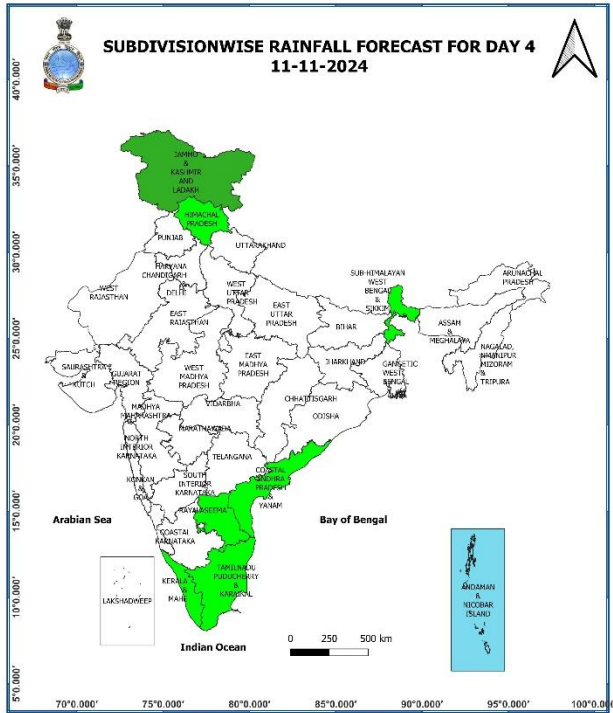
09 November (Day 2):

- ❖ **Heavy rainfall (≥ 7 cm)** very likely at isolated places over Tamil Nadu, Puducherry & Karaikal.
- ❖ **Thunderstorm accompanied with lightning** very likely at isolated places over Tamil Nadu, Puducherry & Karaikal.
- ❖ **Dense fog conditions** very likely in isolated pockets of Himachal Pradesh in the morning hours.
- ❖ **Squally weather with wind speed 35-45 kmph gusting to 55 kmph** very likely over many parts of southwest Bay of Bengal and adjoining areas of westcentral Bay of Bengal, off north Sri Lanka coast, off north Tamil Nadu coast, gulf of Mannar and adjoining Comorin area. Fishermen are advised not to venture into these areas.



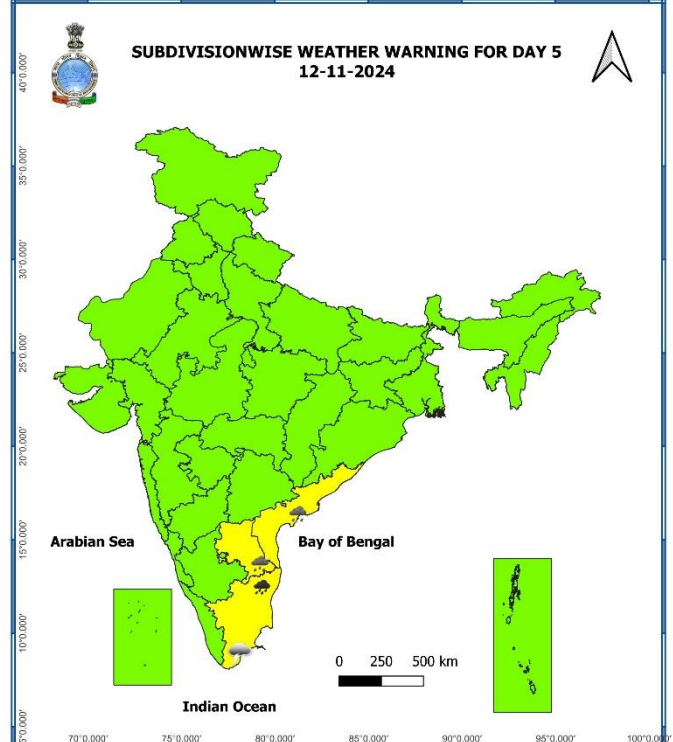
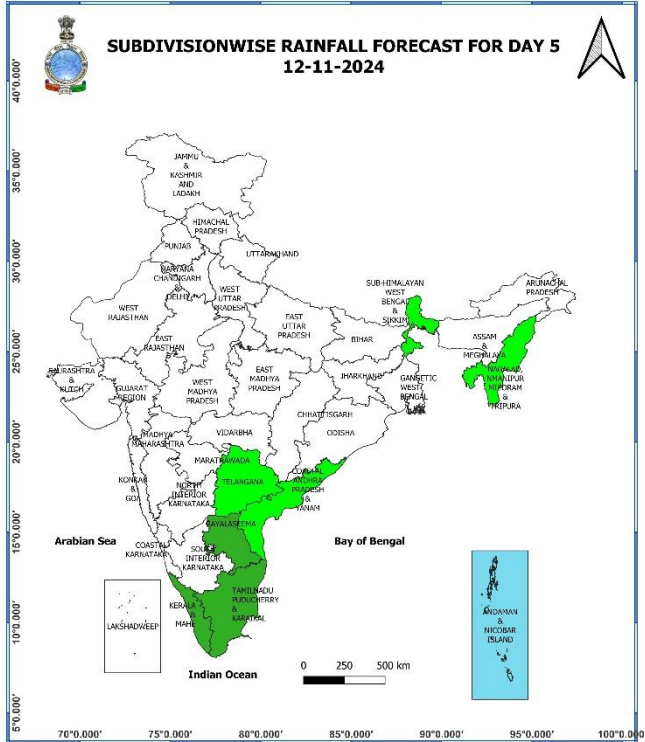
10 November (Day 3):

- ❖ **Heavy rainfall (≥ 7 cm)** very likely at isolated places over Tamil Nadu, Puducherry & Karaikal.
- ❖ **Thunderstorm accompanied with lightning** very likely at isolated places over Tamil Nadu, Puducherry & Karaikal.
- ❖ **Squally weather with wind speed 35-45 kmph gusting to 55 kmph** very likely over northern parts of southwest Bay of Bengal and adjoining areas of westcentral Bay of Bengal, along and off Tamil Nadu, south Andhra Pradesh coasts, gulf of Mannar and adjoining Comorin area. Fishermen are advised not to venture into these areas.



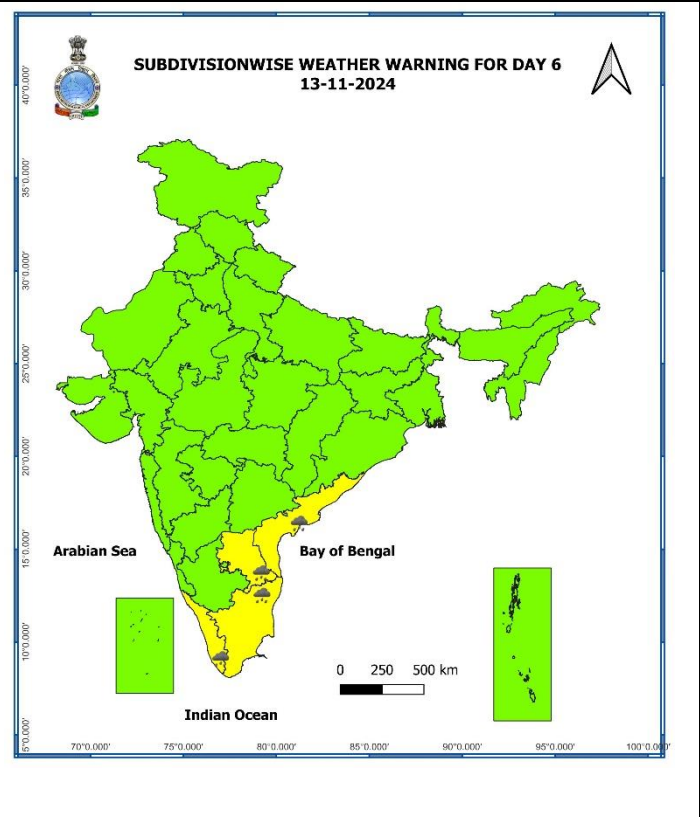
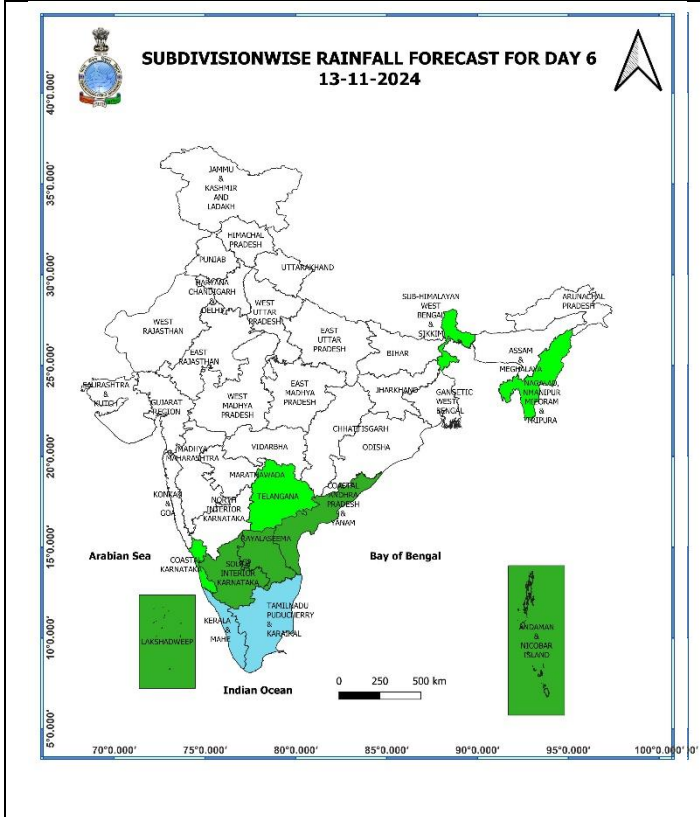
11 November (Day 4):

- ❖ **Heavy rainfall (≥ 7 cm)** likely at isolated places over Coastal Andhra Pradesh & Yanam, Rayalaseema, Tamil Nadu, Puducherry & Karaikal.
- ❖ **Thunderstorm accompanied with lightning** likely at isolated places over Tamil Nadu, Puducherry & Karaikal.
- ❖ **Squally weather with wind speed 35-45 kmph gusting to 55 kmph** likely over along and off Tamil Nadu, south Andhra Pradesh coasts & adjoining sea area, gulf of Mannar and adjoining Comorin area. Fishermen are advised not to venture into these areas.



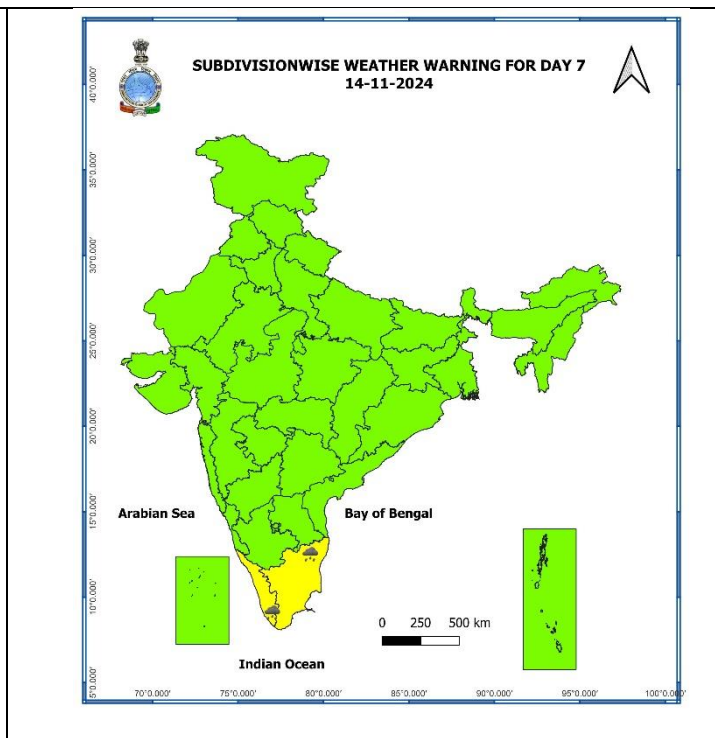
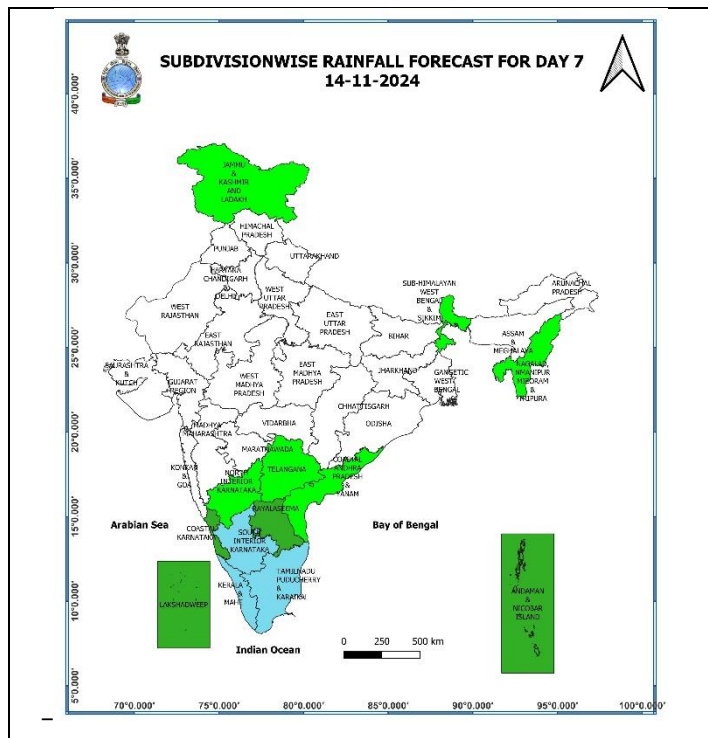
12 November (Day 5):

- ❖ **Heavy to very heavy rainfall (≥ 12 cm)** likely at isolated places over Tamil Nadu, Puducherry & Karaikal; **Heavy rainfall (≥ 7 cm)** likely at isolated places over Coastal Andhra Pradesh & Yanam, Rayalaseema.
- ❖ **Thunderstorm accompanied with lightning** likely at isolated places over Tamil Nadu, Puducherry & Karaikal.



13 November (Day 6):

- ❖ **Heavy rainfall (≥ 7 cm)** likely at isolated places over Tamil Nadu, Puducherry & Karaikal, Kerala & Mahe, Coastal Andhra Pradesh & Yanam, Rayalaseema.



14 November (Day 7):

- ❖ **Heavy rainfall (≥ 7 cm)** likely at isolated places over Tamil Nadu, Puducherry & Karaikal and Kerala & Mahe.

Weather Outlook for subsequent 3 days (During 15th November – 17th November, 2024)

- ❖ Isolated to Scattered light rainfall likely over some parts of Jammu-Kashmir-Ladakh-Gilgit-Baltistan-Muzaffarabad, Tamil Nadu, Puducherry & Karaikal, Kerala & Mahe and Northeast India.
- ❖ Mainly dry weather will prevail over rest parts of country.

- Action may be taken based on **ORANGE AND RED COLOUR** warnings.
- Vulnerable regions likely urban and hilly areas action may be initiated for heavy rainfall warning.
- As the lead period increases forecast accuracy decreases.

Impact due to

- ✓ **Isolated heavy to very heavy rainfall** very likely over Tamil Nadu, Puducherry & Karaikal on 08th & 12th; Kerala & Mahe on 08th November.

Impact Expected

- ✓ Localized Flooding of roads, water logging in low lying areas and closure of underpasses mainly in urban areas of the above region.
- ✓ Occasional reduction in visibility due to heavy rainfall.
- ✓ Disruption of traffic in major cities and roadways due to water logging in roads leading to increased travel time.
- ✓ Minor damage to kutcha roads.
- ✓ Possibilities of damage to vulnerable structure.
- ✓ Localized Landslides/Mudslides/landslips/mud slips/land sinks/mud sinks.
- ✓ Damage to horticulture and standing crops in some areas due to inundation and wind.
- ✓ It may lead to riverine flooding in some river catchments (for riverine flooding please visit Web page of CWC)

Action Suggested

- ✓ Judicious regulation of surface transports including railways and roadways.
- ✓ Check for traffic congestion on your route before leaving for your destination.
- ✓ Follow any traffic advisories that are issued in this regard.
- ✓ Avoid going to areas that face the water logging problems often.
- ✓ Avoid staying in vulnerable structure

Agromet advisories for Heavy Rainfall likely over various parts of the country:

- ✓ In **Tamil Nadu**, drain out excess water from paddy and other field crops, vegetables and orchards. Undertake propping in sugarcane and provide support to banana plantations to avoid lodging.
- ✓ Drain out excess water from the standing crops in Kerala.
- ✓ Keep the harvested produce at safer places.
- ✓ Provide mechanical support to horticultural crops and staking to vegetables.

Fig. 1: Maximum Temperatures

Fig. 2: Departure of Maximum Temperatures

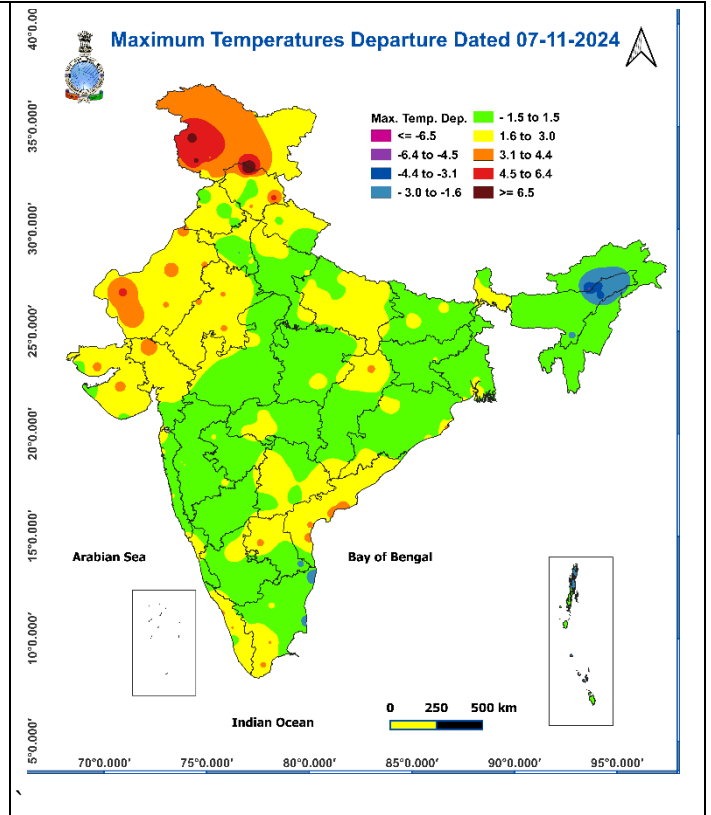
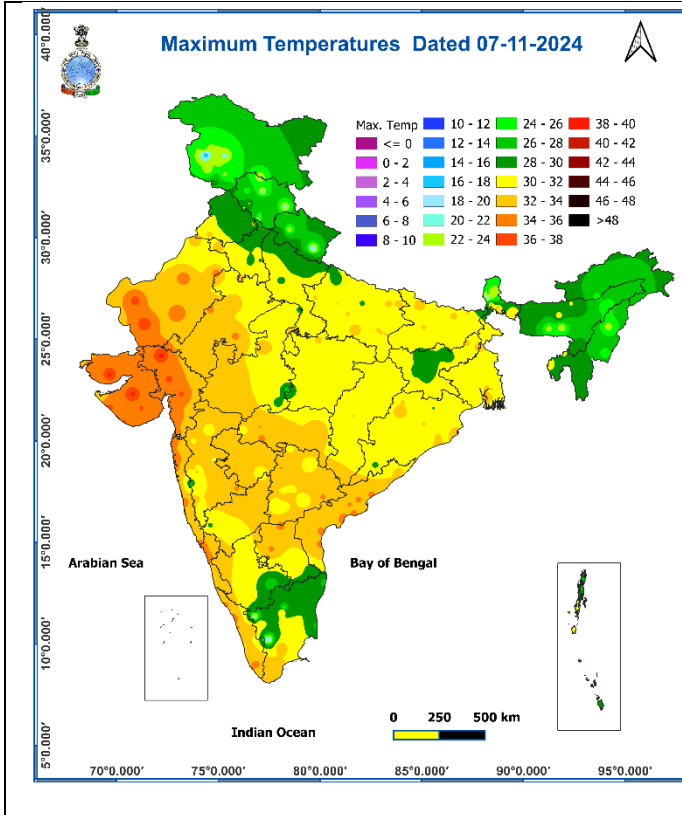


Fig. 3: Minimum Temperatures

Fig. 4: Departure of Minimum Temperatures

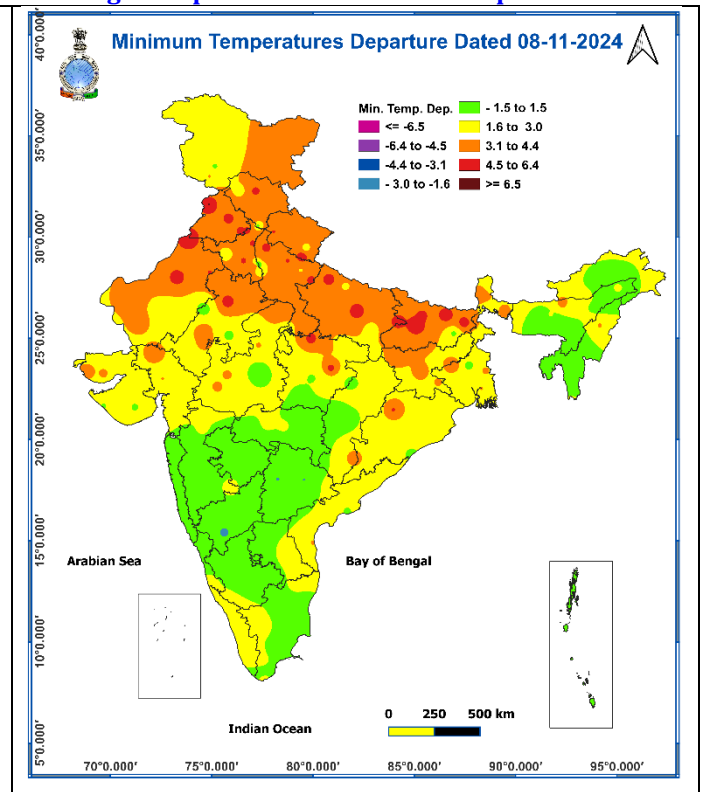
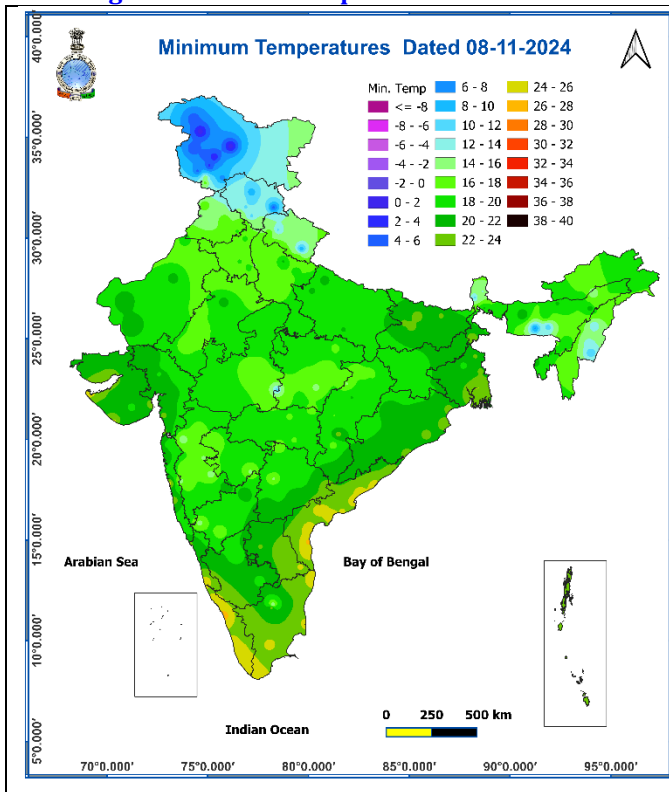
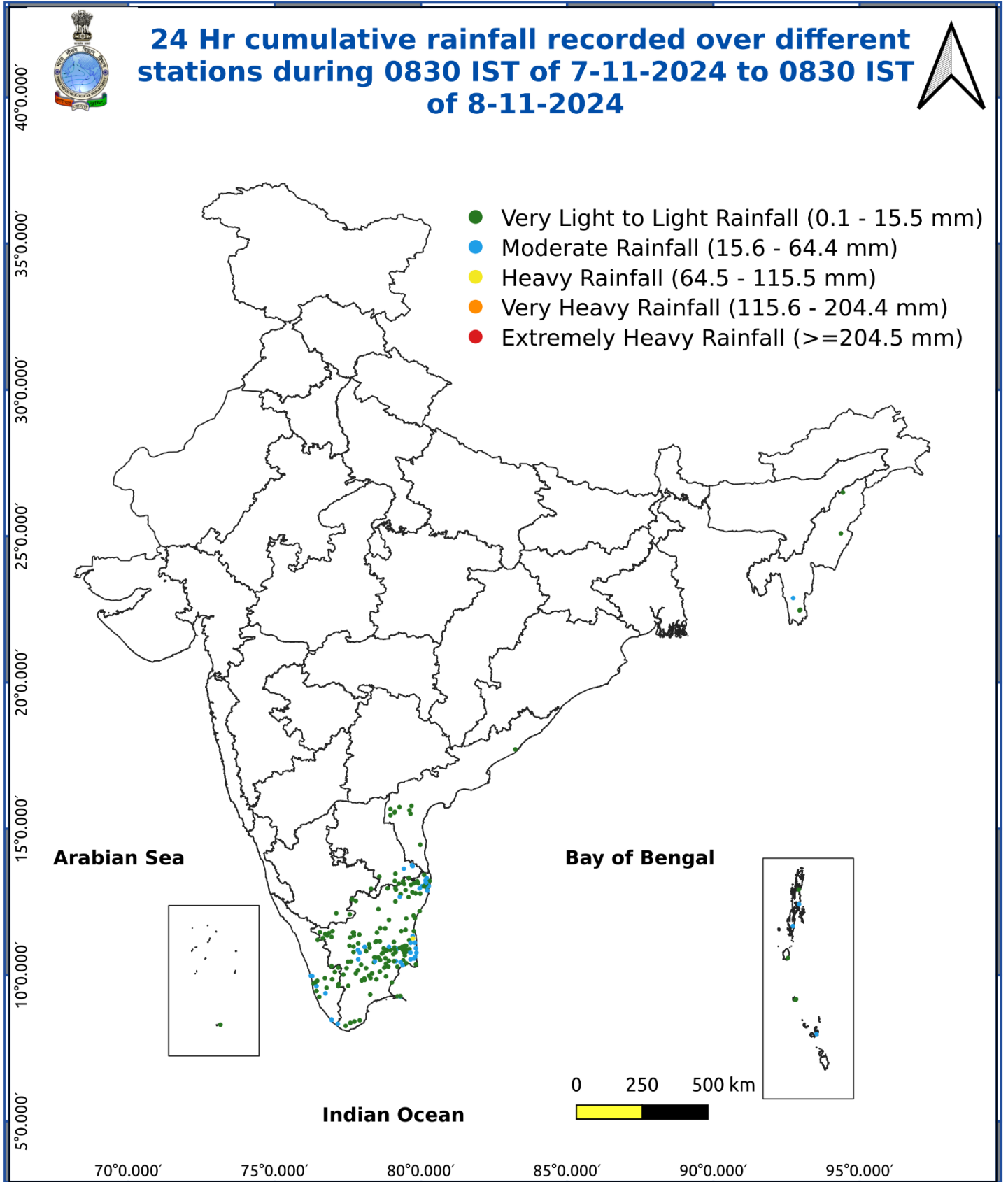


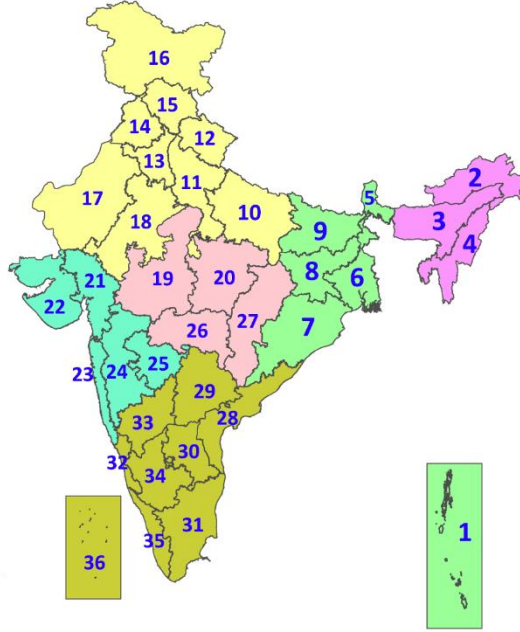
Fig. 5: Accumulated Rainfall (mm) during past 24 hours



* Red colour warning does not mean "Red Alert", Red colour warning means "Take Action".
Forecast and Warning for any day is valid from 0830 hours IST of day till 0830 hours IST of next day.
For more details, kindly visit <https://mausam.imd.gov.in> or contact: 011-2434-4599
(Service to the Nation since 1875)

LEGENDS

1. अंडमान और निकोबार द्वीपसमूह
2. अरुणाचल प्रदेश
3. असम और मेघालय
4. नागालैंड, मणिपुर, मिजोरम और त्रिपुरा
5. उप-हिमालयी पश्चिम बंगाल और सिक्किम
6. गंगीय पश्चिम बंगाल
7. ओडिशा
8. झारखंड
9. बिहार
10. पूर्वी उत्तर प्रदेश
11. पश्चिम उत्तर प्रदेश
12. उत्तराखंड
13. हरियाणा, चंडीगढ़ और दिल्ली
14. पंजाब
15. हिमाचल प्रदेश
16. जम्मू और कश्मीर और लद्दाख
17. पश्चिम राजस्थान
18. पूर्वी राजस्थान
19. पश्चिम मध्य प्रदेश
20. पूर्वी मध्य प्रदेश
21. गुजरात
22. सौराष्ट्र
23. कोंकण और गोवा
24. मध्य महाराष्ट्र
25. मराठवाड़ा
26. विदर्भ
27. छत्तीसगढ़
28. तटीय आंध्र प्रदेश और यनम
29. तेलंगाना
30. रायलसीमा
31. तमिलनाडु, पुडुचेरी और कराईकल
32. तटीय कर्नाटक
33. आंतरिक उत्तरी कर्नाटक
34. आंतरिक दक्षिणी कर्नाटक
35. केरल और माहे
36. लक्षद्वीप



1. Andaman & Nicobar Islands
2. Arunachal Pradesh
3. Assam & Meghalaya
4. Nagaland, Manipur, Mizoram & Tripura
5. Sub-Himalayan West Bengal & Sikkim
6. Gangetic West Bengal
7. Odisha
8. Jharkhand
9. Bihar
10. East Uttar Pradesh
11. West Uttar Pradesh
12. Uttarakhand
13. Haryana, Chandigarh & Delhi
14. Punjab
15. Himachal Pradesh
16. Jammu & Kashmir and Ladakh
17. West Rajasthan
18. East Rajasthan
19. West Madhya Pradesh
20. East Madhya Pradesh
21. Gujarat
22. Saurashtra
23. Konkan & Goa
24. Madhya Maharashtra
25. Marathwada
26. Vidarbha
27. Chhattisgarh
28. Coastal Andhra Pradesh & Yanam
29. Telangana
30. Rayalaseema
31. Tamilnadu, Puducherry & Karaikal
32. Coastal Karnataka
33. North Interior Karnataka
34. South Interior Karnataka
35. Kerala & Mahe
36. Lakshadweep

SPATIAL DISTRIBUTION (% of Stations reporting)

% Stations	Category	% Stations	Category
76-100	Widespread (WS/Most Places)	26-50	Scattered (SCT/A Few Places)
51-75	Fairly Widespread (FWS/Many Places)	1-25	Isolated (ISOL)



COLOUR CODED WARNING

No Warning (No Action)
Watch (Be Aware)
Alert (Be Prepared To Take Action)
Warning (Take Action)

Probabilistic Forecast

Terms	Probability of Occurrence (%)
Unlikely	< 25
Likely	25 - 50
Very Likely	50 - 75
Most Likely	> 75

DEFINITION/CRITERIA

Rain/ Snow *	<p>Heavy: 64.5 to 115.5 mm/cm *</p> <p>Very Heavy: 115.6 to 204.4 mm/cm*</p> <p>Extremely Heavy: > 204.4 mm/cm *</p>
Heat Wave	<p>When maximum temperature of a station reaches $\geq 40^\circ\text{C}$ for plains and $\geq 30^\circ\text{C}$ for hilly regions</p> <p>(a) Based on Departure from normal</p> <p>Heat Wave: Maximum Temperature Departure from normal 4.5°C to 6.4°C.</p> <p>Severe Heat Wave: Maximum Temperature Departure from normal $\geq 6.5^\circ\text{C}$</p> <p>(b). Based on Actual maximum temperature</p> <p>Heat Wave: When actual maximum temperature $\geq 45^\circ\text{C}$.</p> <p>Severe Heat Wave: When actual maximum temperature $\geq 47^\circ\text{C}$</p> <p>(c) Criteria for heat wave for coastal stations</p> <p>When maximum temperature departure is $>4.5^\circ\text{C}$ from normal. Heat Wave may be described provided maximum temperature $\geq 37^\circ\text{C}$</p>
Warm Night	<p>When maximum temperature remains 40°C</p> <p>Warm Night: When minimum temperature departure 4.5°C to 6.4°C.</p> <p>Severe Warm Night: When minimum temperature departure $>6.4^\circ\text{C}$.</p>
Cold Wave	<p>When minimum temperature of a station $\leq 10^\circ\text{C}$ for plains and $\leq 0^\circ\text{C}$ for hilly regions.</p> <p>(a). Based on departure</p> <p>Cold Wave: Minimum Temperature Departure from normal -4.5°C to -6.4°C.</p> <p>Severe Cold Wave: Minimum Temperature Departure from normal $\leq -6.5^\circ\text{C}$</p> <p>(b) Based on actual Minimum Temperature (for Plains only)</p> <p>Cold Wave : When Minimum Temperature is $\leq 4.0^\circ\text{C}$</p> <p>Severe Cold Wave: When Minimum Temperature is $\leq 2.0^\circ\text{C}$</p> <p>(c) For Coastal Stations</p> <p>When Minimum Temperature departure is $\leq -4.5^\circ\text{C}$ & actual Minimum Temperature is $\leq 15^\circ\text{C}$</p>
Cold Day	<p>When minimum temperature of a station $\leq 10^\circ\text{C}$ for plains and $\leq 0^\circ\text{C}$ for hilly regions</p> <p>Based on departure</p> <p>Cold Day: Maximum Temperature Departure from normal -4.5°C to -6.4°C.</p> <p>Severe Cold Day: Maximum Temperature Departure from normal $\leq -6.5^\circ\text{C}$</p>
Fog	<p>Phenomenon of small droplets suspended in air and the horizontal visibility $< 1\text{km}$</p> <p>Moderate Fog: When the visibility between 500-200 metres</p> <p>Dense Fog: when the visibility between 50- 200 metres</p> <p>Very Dense Fog: when the visibility < 50 metres</p>
Thunderstorm	<p>Sudden electrical discharges manifested by a flash of light (Lightning) and a sharp rumbling sound (thunder)</p>
Dust/Sand Storm	<p>An ensemble of particles of dust or sand energetically lifted to great heights by a strong and turbulent wind.</p>
Frost	<p>Ice deposits on ground</p> <p>Air temperature $\leq 4^\circ\text{C}$ (over Plains)</p>
Squall	<p>A strong wind that rises suddenly, lasts for atleast 1 minute.</p> <p>Moderate: Wind speed 52-61 kmph</p> <p>Severe: Wind speed 62-87 kmph</p> <p>Very Severe: Wind speed >87 kmph</p>
Sea State	<p>Effect of various waves in the sea over specific area</p> <p>Rough to very rough: Wind speed 41-62 kmph (22-33 knots) & Wave height 2.5-6 metre</p> <p>High to very high: Wind speed 63-117 kmph (34-63 knots) & Wave height 6-14 metre</p> <p>Phenomenal: Wind speed >117 kmph (>63 knots) & Wave height >14 metre</p>
Cyclone	<p>Cyclonic Storm: Wind speed 62-87 kmph (34-47 knots)</p> <p>Severe Cyclonic Storm: Wind speed 88-117 kmph (48-63 knots)</p> <p>Very Severe Cyclonic Storm: Wind speed 118-165 kmph (64 - 89 knots)</p> <p>Extremely Severe Cyclonic Storm: Wind speed 166-220 kmph (90 -119 knots)</p> <p>Super Cyclone Strom: Wind speed >220 kmph (>119 knots)</p>