

2025-08-20

Time of Issue: 13:45:00 hours IST  
(Mid-Day)

## ALL INDIA WEATHER SUMMARY AND FORECAST BULLETIN

### Significant Weather Features

#### Weather Forecast and Warnings:

##### West India:

Heavy to very heavy rainfall at a few places with isolated Extremely to Exceptionally heavy rainfall ( $\geq 30$  cm) is very likely over Saurashtra & Kutch and south Gujarat region on 20<sup>th</sup> and over Saurashtra on 21<sup>st</sup> August, 2025.

Rainfall activity is likely to reduce over Konkan and Madhya Maharashtra from today onwards with isolated heavy to very heavy rainfall over north Konkan (including Mumbai) and isolated very heavy to extremely heavy rainfall ( $\geq 21$  cm) over North Madhya Maharashtra on 20<sup>th</sup> and isolated heavy rainfall over the region during subsequent 3 days.

Strong surface winds (speed reaching 40-50 kmph) very likely over the region till 23<sup>rd</sup> August.

Light to moderate rainfall at most/many places very likely over the region during next 7 days.

Increase in rainfall activity over Konkan and Madhya Maharashtra and adjoining Gujarat from 25<sup>th</sup> Onwards.

##### East & Central India:

Isolated **heavy rainfall** likely over Madhya Pradesh, Chhattisgarh, Sub-Himalayan West Bengal & Sikkim, Bihar during next 7 days; Vidarbha on 20<sup>th</sup>, 25<sup>th</sup> & 26<sup>th</sup>; Odisha, Jharkhand, Gangetic West Bengal during 21<sup>st</sup>-25<sup>th</sup> August with isolated **very heavy rainfall over south Madhya Pradesh on 20<sup>th</sup>; Jharkhand on 22<sup>nd</sup>; Bihar on 22<sup>nd</sup> & 23<sup>rd</sup> and Chhattisgarh on 25<sup>th</sup> & 26<sup>th</sup> August.**

Light to moderate rainfall at most/many places accompanied with thunderstorm & lightning likely over the region during next 5 days.

##### Northwest India:

Isolated **heavy rainfall** likely over Jammu-Kashmir during 22<sup>nd</sup>-26<sup>th</sup>; Himachal Pradesh, Uttarakhand, East Rajasthan during next 7 days; Punjab, Haryana on 20<sup>th</sup>, during 22<sup>nd</sup>-26<sup>th</sup>; East Uttar Pradesh during 22<sup>nd</sup>-25<sup>th</sup>; West Uttar Pradesh during 23<sup>rd</sup>-26<sup>th</sup>; West Rajasthan on 23<sup>rd</sup> & 24<sup>th</sup> August with **isolated very heavy rainfall over Punjab on 20<sup>th</sup> and 23<sup>rd</sup>; over Uttarakhand, Himachal Pradesh during 23<sup>rd</sup>-25<sup>th</sup>; Haryana and East Rajasthan on 23<sup>rd</sup> August.**

Light/moderate rainfall at most/many places accompanied with thunderstorm & lightning likely over Jammu-Kashmir-Ladakh-Gilgit-Baltistan-Muzaffarabad, Uttarakhand & Rajasthan during next 7 days.

##### Northeast India:

Isolated **heavy rainfall** likely to continue over Assam & Meghalaya, Nagaland, Manipur, Mizoram & Tripura, Arunachal Pradesh during 7 days with **very heavy rainfall over Arunachal Pradesh, Tripura, Mizoram during 21<sup>st</sup>-24<sup>th</sup> and Assam & Meghalaya during 20<sup>th</sup>-23<sup>rd</sup> August.**

Light/moderate rainfall at many places accompanied with thunderstorm & lightning likely during next 3 days.

##### South Peninsular India:

Isolated **heavy rainfall** likely over Coastal & North Interior Karnataka on 20<sup>th</sup> & 26<sup>th</sup>; Telangana on 20<sup>th</sup>, 25<sup>th</sup> & 26<sup>th</sup>; Coastal Andhra Pradesh on 26<sup>th</sup> August.

**\*Red color warning does not mean "Red Alert" Red color warning means "Take Action"**

Forecast and warning for any day is valid from 0830 hours IST of day till 0830 hours IST of next day

For more details kindly visit <https://mausam.imd.gov.in> or contact 011-2434-4599

(Service to the nation since 1875)



Strong surface winds (speed reaching 40-50 kmph) very likely over north Coastal Andhra Pradesh and Coastal Karnataka on 20<sup>th</sup> August.

Light to moderate rainfall at most/many places accompanied with thunderstorm & lightning likely over Tamil Nadu, Coastal Andhra Pradesh & Yanam and Telangana during next 5 days.

### Main Weather Observations:

❖ **Rainfall distribution** (from 0830 hours IST of yesterday to 0830 hours IST of today): **at most places** over Nagaland, Manipur, Mizoram & Tripura, Gangetic West Bengal, Odisha, Jharkhand, Himachal Pradesh, West Madhya Pradesh, Saurashtra & Kutch, Konkan & Goa, Madhya Maharashtra, Vidarbha, Chhattisgarh, Coastal Karnataka and North Interior Karnataka; **at many places** over Andaman & Nicobar Islands, Arunachal Pradesh, Assam & Meghalaya, Sub Himalayan West Bengal & Sikkim, Uttarakhand, East Madhya Pradesh, Gujarat Region, Telangana and Kerala & Mahe; **at a few places** over Haryana-Chandigarh-Delhi, Punjab, Jammu-Kashmir-Ladakh-Gilgit-Baltistan-Muzaffarabad, East Rajasthan, Marathwada, Coastal Andhra Pradesh & Yanam, Rayalaseema, South Interior Karnataka and Lakshadweep; **at isolated places** over Bihar, East Uttar Pradesh, West Uttar Pradesh, West Rajasthan and Tamil Nadu, Puducherry & Karaikal;

❖ **Significant rainfall recorded(in cm)** (from 0830 hours IST of yesterday to 0830 hours IST of today): **Madhya Maharashtra:** Tamini (Pune) – 57; Lonavala ARG (dist Pune) 43; Mahabaleshwar (dist Satara) 30; Radhanagari (dist Kolhapur), Gaganbawada (dist Kolhapur) 17 Each; Igatpuri (dist Nashik) 16; Vadgaon Maval (dist Pune) 15; Shahuwadi (dist Kolhapur) 12; Ozarkheda - Fmo (dist Nashik), Velhe (dist Pune) 10 Each; Talegaon AWS (dist Pune), Chinchwad - ARG (dist Pune), Trimbakshwar (dist Nashik), Harsul - Fmo (dist Nashik), Gargoti/bhudargad (dist Kolhapur) 9 Each; Paud Mulshi (dist Pune), Ambegaon Ghodegaon (dist Pune), Junnar (dist Pune) 8 Each; Bhore (dist Pune) 7; **Konkan & Goa:** Matheran (dist Raigad) 44; Panvel ARG (dist Raigad), Karjat ARG (dist Raigad), Bhiwandi (dist Thane) 23 Each; Thane (dist Thane), Vikramgad (dist Palghar), Tala (dist Raigad), Savarde-arg (dist Ratnagiri) 22 Each; Santacruz (dist Mumbai Suburban), Pen (dist Raigad), Vasai (dist Palghar) 21 Each; Wada (dist Palghar) 20; Tbia IMD Part Time (dist Thane), Jawhar (dist Palghar), Khalapur (dist Raigad), Palghar ARG (dist Palghar) 19 Each; Sudhagad Pali (dist Raigad), Mhasla (dist Raigad) 18 Each; Talasari (dist Palghar), Ambarnath (dist Thane), Poladpur (dist Raigad) 17 Each; Mokheda - Fmo (dist Palghar) 16; Roha (dist Raigad), Sangameshwar Devrukh (dist Ratnagiri), Dahanu (dist Palghar) 15 Each; Mangaon (dist Raigad), Mandangad (dist Ratnagiri), Chiplun (dist Ratnagiri), Kalyan (dist Thane), Vaibhavwadi (dist Sindhudurg) 14 Each; Shahapur (dist Thane), Murbad (dist Thane), Khed (dist Ratnagiri), Uran (dist Raigad), Dapoli ARG (dist Ratnagiri) 13 Each; Guhagarh (dist Ratnagiri), Ulhasnagar (dist Thane) 12 Each; Murud (dist Raigad), Colaba (dist Mumbai City), Kudal (dist Sindhudurg), Mulde ARG (dist Sindhudurg), Mahad (dist Raigad), Wakwali ARG (dist Ratnagiri), Kankavli (dist Sindhudurg) 11 Each; Ratnagiri (dist Ratnagiri), Rajapur (dist Ratnagiri) 10 Each; Sawantwadi (dist Sindhudurg), Awalegaon - ARG (dist Sindhudurg), Quepem (dist South Goa) 9 Each; Shriwardhan (dist Raigad), Ponda (dist North Goa), Devgad (dist Sindhudurg) 8 Each; Harnai IMD (dist Ratnagiri), Malvan (dist Sindhudurg), Pernem (dist North Goa), Dabolim N.a.s.- Navy (dist South Goa), Lanja (dist Ratnagiri) 7 Each; **Saurashtra & Kutch:** Kalyanpur (dist Devbhoomi Dwarka) 26; Dwarka (dist Devbhoomi Dwarka) 20; Porbandar (dist Porbandar) 17; Sutrapada (dist Gir Somnath) 13; Diu (dist Diu), Jafrabad (dist Amreli) 11 Each; Rajula (dist Amreli), Talala (dist Gir Somnath), Una (dist Gir Somnath) 10 Each; Mahuva(b) (dist Bhavnagar), Kodinar (dist Gir Somnath) 9 Each; Gir Gadhada (dist Gir Somnath) 8; Mendarda (dist Junagadh), Vanthali (dist Junagadh), Veraval (dist Gir Somnath) 7 Each; **Gujarat Region:** Khanvel (dist Dadara & Nagar Haveli) 17; Madhbun (dist Dadara & Nagar Haveli) 10; Daman (dist Daman), Umergam (dist Valsad) 8 Each; Vapi (dist Valsad), Silvassa (dist Dadara & Nagar Haveli), Daman Fmo (dist Daman) 7 Each; **Coastal Karnataka:** Castle Rock (dist Uttara Kannada) 16; Jagalbet (dist Uttara Kannada) 8; Yellapur (dist Uttara Kannada) 7; **Uttarakhand:** Uttar Kashi (CWC) (dist Uttarkashi), Uttar Kashi (dist Uttarkashi) 13 Each; Loharkhet (dist Bageshwar) 9; Ranikhet (g) (dist Almora), Dharchula (dist Pithoragarh) 8 Each; **Haryana-Chandigarh-Delhi:** Morni (dist Panchkula) 12; **West Madhya Pradesh:** Kannod (dist Dewas) 11; Indore (dist Indore), Bhipur (dist Betul) 8 Each; Raisen-aws (dist Raisen), Shajapur (dist Shajapur) 7 Each; **East Rajasthan:** Sajjangarh SR (dist Banswara), Loharia (dist Banswara) 10 Each; Garhi (dist Banswara) 7; **Vidarbha:** Bhamragad (dist Gadchiroli), Gondia AP (dist Gondia) 8 Each; **East Madhya Pradesh:** Paraswada (dist Balaghat), Keolari (dist Seoni), Baihar (dist Balaghat), Kirnapur (dist Balaghat) 8 Each; **Chhattisgarh:** Bhanupratappur (dist Kanker), Durgkondal (dist Kanker) 8 Each; Gobra Nawapara (dist Raipur) 7; **Telangana:** Palawanacha (dist B. Kothagudem), Kothagudem (dist B. Kothagudem), Yellandu (dist B. Kothagudem) 7 Each; **North Interior Karnataka:** Londa (dist Belagavi) 7; **Himachal Pradesh:** Bharwain (dist Una) 7; **Assam & Meghalaya:** Dhubri CWC (dist Dhubri) 7.

❖ **Heavy Rainfall observed** (from 0830 hours IST of yesterday to 0830 hours IST of today): **Extremely heavy rain** at isolated places over Saurashtra & Kutch, Konkan & Goa and Madhya Maharashtra. **Heavy to very heavy rain** at a few places over Konkan & Goa and at isolated places over Uttarakhand, Haryana-Chandigarh-Delhi, Gujarat Region, Saurashtra & Kutch, Madhya Maharashtra and Coastal Karnataka. **Heavy rain** at isolated places over Assam & Meghalaya, Odisha, Himachal Pradesh, East Rajasthan, West Madhya Pradesh, East Madhya Pradesh, Vidarbha, Chhattisgarh, Telangana and North Interior Karnataka.

\*Red color warning does not mean "Red Alert" Red color warning means "Take Action"

Forecast and warning for any day is valid from 0830 hours IST of day till 0830 hours IST of next day

For more details kindly visit <https://mausam.imd.gov.in> or contact 011-2434-4599

(Service to the nation since 1875)

❖ **Minimum Temperature Departures (as on 20-08-2025):** markedly above normal(> 5.1°C) at many places over Jammu-KashmirLadakh-Gilgit-Baltistan-Muzaffarabad; at most places over Himachal Pradesh; at few places over West Madhya Pradesh and East Madhya Pradesh; at isolated places over Assam & Meghalaya, East Uttar Pradesh, West Uttar Pradesh and West Rajasthan. **appreciably above normal(3.1°C to 5.0°C)** at isolated places over Sub Himalayan West Bengal & Sikkim, Odisha, Bihar, East Rajasthan, Gujarat Region and Saurashtra & Kutch. **above normal(1.6°C to 3.0°C)** at many places over Lakshadweep; at isolated places over Gangetic West Bengal, Haryana-Chandigarh-Delhi, Madhya Maharashtra, Vidarbha, Rayalaseema and Tamil Nadu, Puducherry & Karaikal. **near normal(-1.5°C to 1.5°C)** at many places over Uttarakhand, Konkan & Goa, Chhattisgarh and Telangana; at most places over Andaman & Nicobar Islands, Arunachal Pradesh, Nagaland, Manipur, Mizoram & Tripura, Jharkhand, Punjab, Marathwada, Coastal Andhra Pradesh & Yanam, Coastal Karnataka, North Interior Karnataka, South Interior Karnataka and Kerala & Mahe. **The lowest minimum temperature** of 19.0°C is reported at KHANDWA (MADHYA PRADESH), MATHERAN (MAHARASHTRA), JEUR (MAHARASHTRA), and MYSORE (KARNATAKA) over the Plains of India.

❖ **Maximum Temperature Departures (as on 19-08-2025):** markedly above normal(> 5.1°C) at isolated places over Himachal Pradesh. **appreciably above normal(3.1°C to 5.0°C)** at few places over Sub Himalayan West Bengal & Sikkim, West Rajasthan and East Madhya Pradesh; at isolated places over Assam & Meghalaya, Odisha, West Uttar Pradesh, Haryana-Chandigarh-Delhi, Punjab, East Rajasthan, West Madhya Pradesh, Saurashtra & Kutch and Tamil Nadu, Puducherry & Karaikal. **above normal(1.6°C to 3.0°C)** at many places over Uttarakhand; at few places over Bihar, East Uttar Pradesh, Gujarat Region and Lakshadweep; at isolated places over Vidarbha, Chhattisgarh and Kerala & Mahe. **near normal(-1.5°C to 1.5°C)** at many places over Andaman & Nicobar Islands, Jharkhand and Coastal Karnataka; at most places over Arunachal Pradesh, Nagaland, Manipur, Mizoram & Tripura and Gangetic West Bengal; at few places over Jammu-KashmirLadakh-Gilgit-Baltistan-Muzaffarabad and Madhya Maharashtra; at isolated places over Konkan & Goa, Coastal Andhra Pradesh & Yanam and Telangana. **The highest maximum temperature** of 40.0°C is reported at BARMER (RAJASTHAN), and MADURAI (A) (TAMIL NADU).



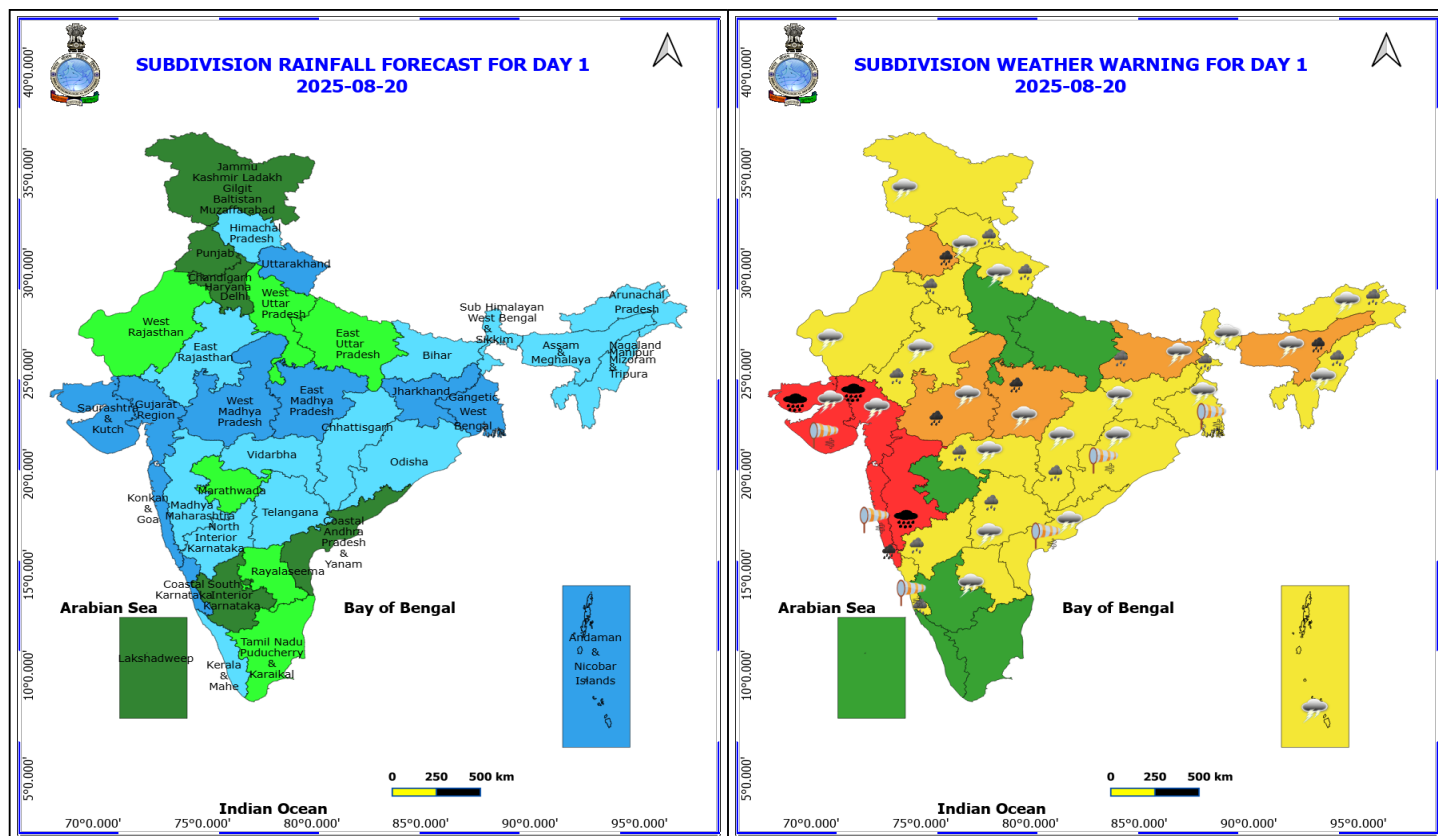
#### Meteorological Analysis (Based on 0830 hours IST)

- The **low-pressure area** over central parts of Chhattisgarh and adjoining east Madhya Pradesh has become less marked at 0830 hrs IST of today, the 20<sup>th</sup> August. However, the associated cyclonic circulation lay over southeast Madhya Pradesh & neighbourhood and extends upto 4.5 km above mean sea level.
- The **monsoon trough** now passes through Nalia, Vallabh Vidyanagar, Betul, Mandla, Sambalpur, Chandbali & thence east-southeastwards to eastcentral Bay of Bengal extending upto 1.5 km above mean sea level.
- The **Western Disturbance** lay as a cyclonic circulation over Jammu division & neighbourhood at 3.1 km above mean sea level.
- An **upper air cyclonic circulation** lay over northeast Assam & neighbourhood and extends upto 1.5 km above mean sea level.
- The **upper air cyclonic circulation** over northeast Arabian Sea & adjoining Gujarat between 5.8 km & 7.6 km above mean sea level persisted.
- The **shear zone** roughly along Lat. 21°N over the Indian region between 3.1 & 4.5 km above mean sea level persisted.
- The **off shore trough** at mean sea level runs along Gujarat -Maharashtra coasts.

#### Weather Outlook for subsequent 3 days

- Scattered to Fairly widespread rainfall likely over northern, western India, western peninsular and eastern India.





## 20 August (Day 1)

- ❖ **Heavy to very heavy rainfall at a few places with isolated Extremely to Exceptionally heavy rainfall ( $\geq 30$  cm)** very likely over Saurashtra & Kutch and south Gujarat region.
- ❖ **Heavy to Very Heavy Rainfall with isolated Extremely Heavy Rainfall** very likely at isolated places over Madhya Maharashtra.
- ❖ **Heavy to Very Heavy Rainfall** very likely at isolated places over Konkan (Mumbai) & Goa, Madhya Pradesh, Punjab and Assam & Meghalaya.
- ❖ **Heavy Rainfall** very likely at isolated places over Arunachal Pradesh, Bihar, Chhattisgarh, Coastal Karnataka, East Rajasthan, Haryana, Chandigarh & Delhi, Himachal Pradesh, Nagaland, Manipur, Mizoram and Tripura, North Interior Karnataka, Sub Himalayan West Bengal & Sikkim, Telangana, Uttarakhand and Vidarbha.
- ❖ **Thunderstorm accompanied with lightning & gusty winds(30-40kmph)** very likely at isolated places over Andaman & Nicobar Islands, Bihar, Jammu-Kashmir-Ladakh-Gilgit-Baltistan-Muzaffarabad, Jharkhand, Odisha, Telangana and West Bengal & Sikkim.
- ❖ **Thunderstorm accompanied with Lightning** very likely at isolated places over Andhra Pradesh, Arunachal Pradesh, Assam & Meghalaya, Chhattisgarh, Gujarat State, Himachal Pradesh, Madhya Pradesh, Nagaland, Manipur, Mizoram and Tripura, Rajasthan, Uttarakhand and Vidarbha.
- ❖ **Strong Surface Winds** very likely at isolated places over Coastal Andhra Pradesh, Coastal Karnataka, Gangetic West Bengal, Konkan & Goa, Odisha and Saurashtra & Kutch.
- ❖ **Squally wind with speed reaching 45 kmph to 55 kmph gusting to 65 kmph** is likely to prevail along and off Somalia, Oman coasts, most parts of westcentral Arabian sea, adjoining & some parts of southwest, eastcentral

**\*Red color warning does not mean "Red Alert" Red color warning means "Take Action"**

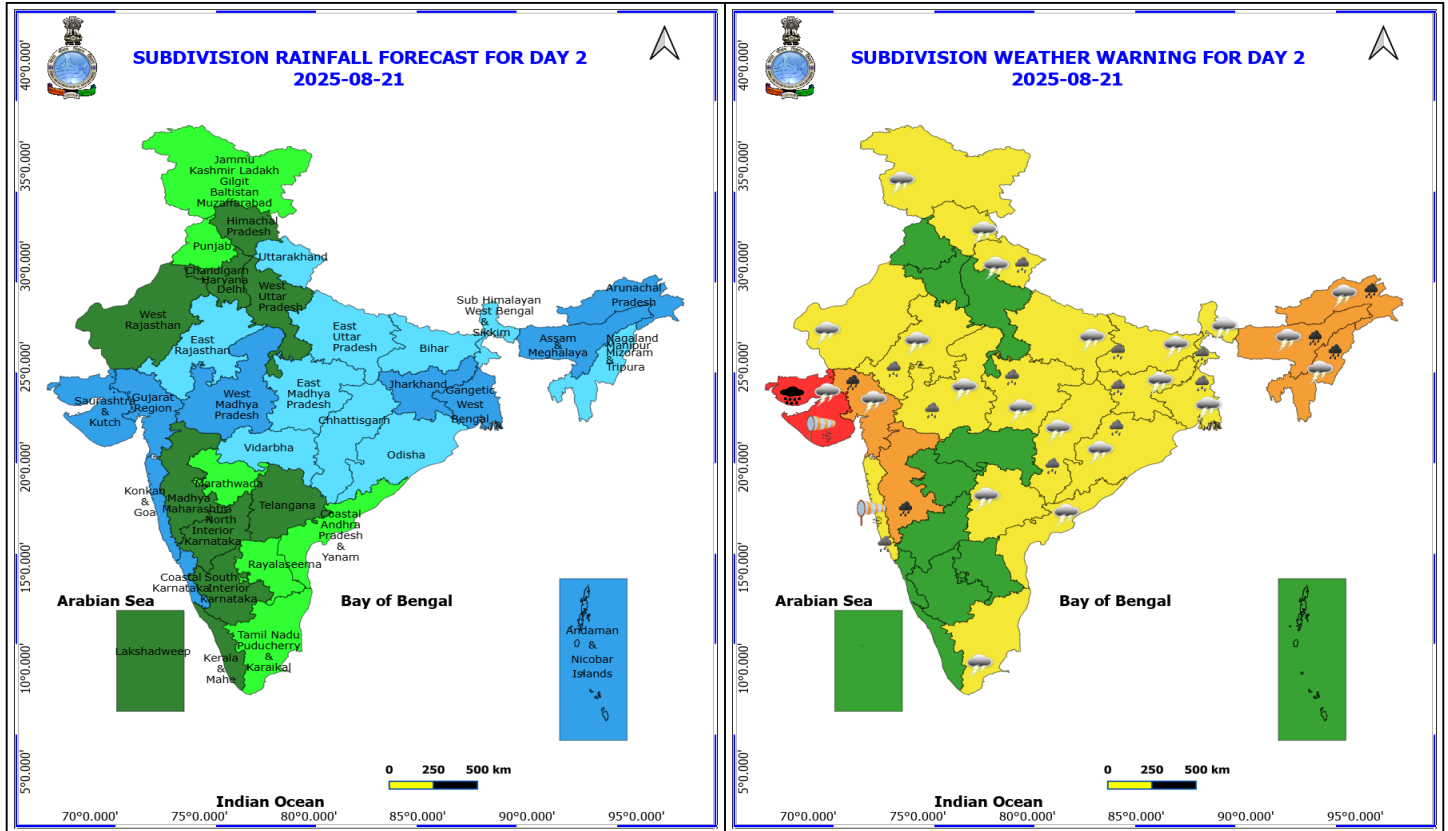
**Forecast and warning for any day is valid from 0830 hours IST of day till 0830 hours IST of next day**

**For more details kindly visit <https://mausam.imd.gov.in> or contact 011-2434-4599**

**(Service to the nation since 1875)**



Arabian Sea; Squally weather with wind speed reaching 40 - 50 kmph gusting to 60 kmph likely to prevail along and off north Gujarat, north Karnataka coasts, over most parts westcentral & adjoining eastcentral Bay of Bengal, north Bay of Bengal, north Andhra Pradesh & north Odisha, West Bengal coasts, over Gulf of Mannar; Squally weather with wind speed reaching 45 - 55 kmph gusting to 65 kmph likely to prevail over along & off south Gujarat coast, Konkan & Goa coasts and adjoining sea areas, most parts of eastcentral Arabian Sea; Squally wind with speed reaching 50 - 60 kmph gusting to 70 kmph likely to prevail over some parts of eastcentral Arabian sea and off south Gujarat & north Konkan coast.



## 21 August (Day 2)

- ❖ **Heavy to Very Heavy Rainfall with isolated Extremely Heavy Rainfall** very likely at isolated places over Saurashtra & Kutch.
- ❖ **Heavy to Very Heavy Rainfall** very likely at isolated places over Arunachal Pradesh, Assam & Meghalaya, Gujarat Region, Madhya Maharashtra and Nagaland, Manipur, Mizoram and Tripura.
- ❖ **Heavy Rainfall** very likely at isolated places over Bihar, Chhattisgarh, East Rajasthan, Jharkhand, Konkan & Goa, Madhya Pradesh, Odisha, Uttarakhand and West Bengal & Sikkim.
- ❖ **Thunderstorm accompanied with lightning & gusty winds(30-40kmph)** very likely at isolated places over Bihar, Jammu-Kashmir-Ladakh-Gilgit-Baltistan-Muzaffarabad, Jharkhand, Odisha, Telangana and West Bengal & Sikkim.
- ❖ **Thunderstorm accompanied with Lightning** very likely at isolated places over Arunachal Pradesh, Assam & Meghalaya, Chhattisgarh, Coastal Andhra Pradesh, East Uttar Pradesh, Gujarat State, Himachal Pradesh, Madhya Pradesh, Nagaland, Manipur, Mizoram and Tripura, Rajasthan, Tamil Nadu Puducherry & Karaikal and Uttarakhand.
- ❖ **Strong Surface Winds** very likely at isolated places over Konkan & Goa and Saurashtra & Kutch.
- ❖ **Squally wind with speed reaching 45 kmph to 55 kmph gusting to 65 kmph** is likely to prevail along and off Somalia, Yemen, Oman coasts, most parts of westcentral Arabian sea, adjoining & some parts of southwest, eastcentral Arabian Sea; Squally weather with wind speed reaching 40 - 50 kmph gusting to 60 kmph likely to prevail over few parts of westcentral and north Bay of Bengal, and Gulf of Mannar; Squally weather with wind speed reaching 45 - 55 kmph gusting to 65 kmph likely to prevail over along & off Gujarat Konkan & Goa coasts and adjoining sea areas, most parts of eastcentral, & northeast Arabian Sea.

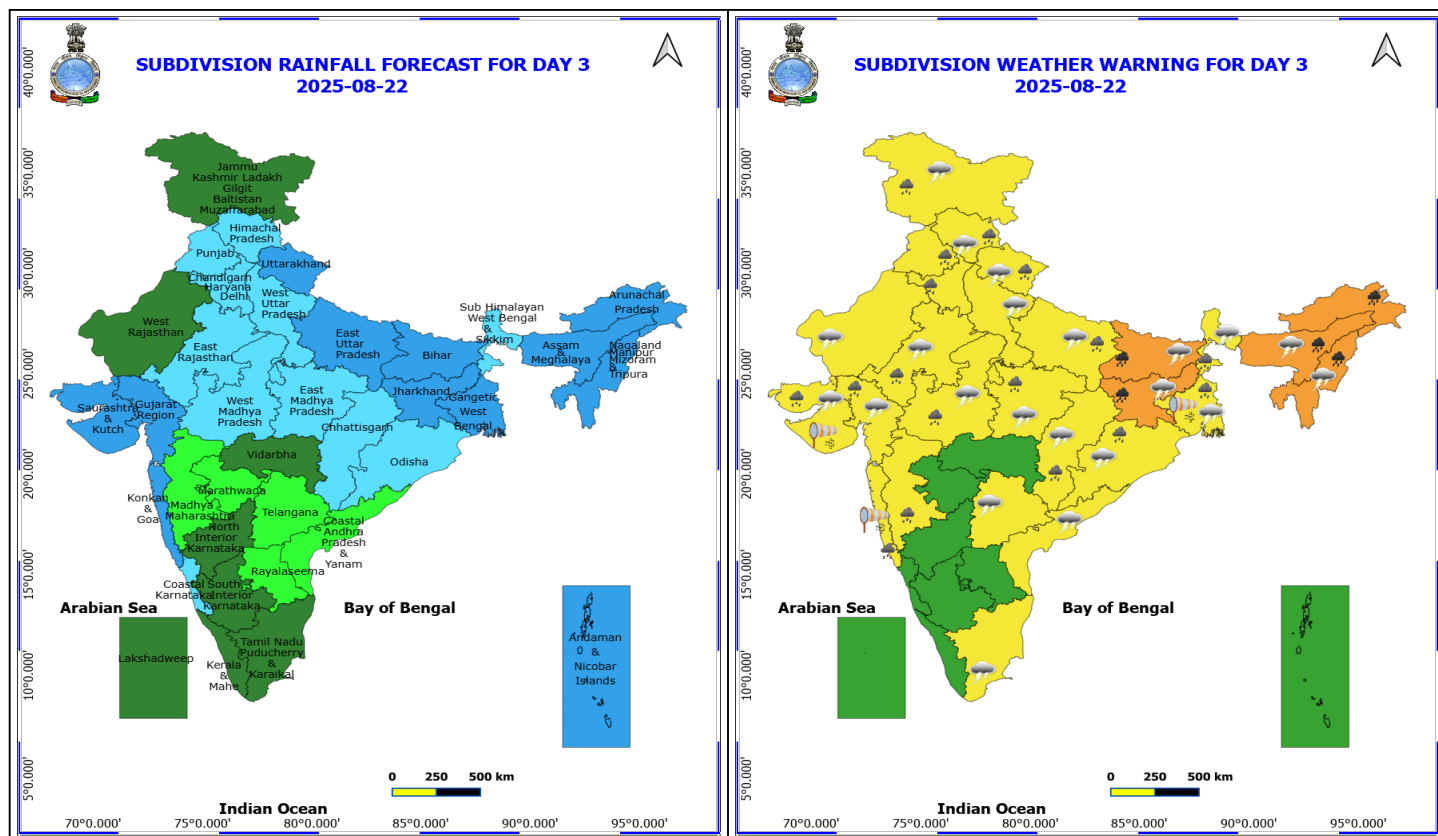
\*Red color warning does not mean "Red Alert" Red color warning means "Take Action"

Forecast and warning for any day is valid from 0830 hours IST of day till 0830 hours IST of next day

For more details kindly visit <https://mausam.imd.gov.in> or contact 011-2434-4599

(Service to the nation since 1875)





## 22 August (Day 3)

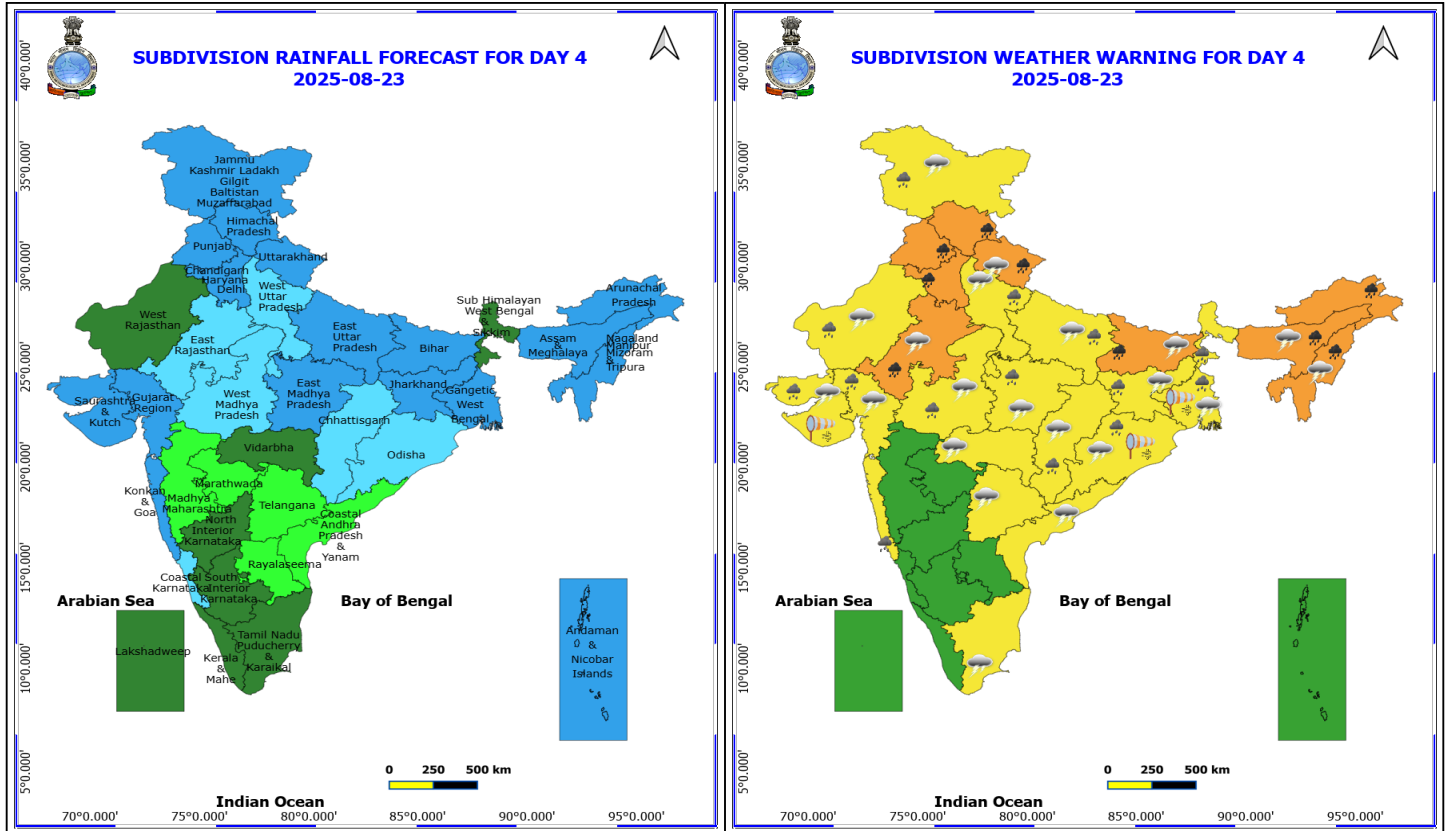
- ❖ **Heavy to Very Heavy Rainfall** very likely at isolated places over Arunachal Pradesh, Assam & Meghalaya, Bihar, Jharkhand and Nagaland, Manipur, Mizoram and Tripura.
- ❖ **Heavy Rainfall** very likely at isolated places over Chhattisgarh, East Rajasthan, East Uttar Pradesh, Gujarat State, Haryana, Chandigarh & Delhi, Himachal Pradesh, Jammu-Kashmir-Ladakh-Gilgit-Baltistan-Muzaffarabad, Konkan & Goa, Madhya Maharashtra, Madhya Pradesh, Odisha, Punjab, Uttarakhand and West Bengal & Sikkim.
- ❖ **Thunderstorm accompanied with lightning & gusty winds(30-40kmph)** very likely at isolated places over Bihar, Jammu-Kashmir-Ladakh-Gilgit-Baltistan-Muzaffarabad, Jharkhand, Odisha, Telangana and West Bengal & Sikkim.
- ❖ **Thunderstorm accompanied with Lightning** very likely at isolated places over Assam & Meghalaya, Chhattisgarh, Coastal Andhra Pradesh, Gujarat State, Himachal Pradesh, Madhya Pradesh, Nagaland, Manipur, Mizoram and Tripura, Rajasthan, Tamil Nadu Puducherry & Karaikal, Uttar Pradesh and Uttarakhand.
- ❖ **Strong Surface Winds** very likely at isolated places over Gangetic West Bengal, Konkan & Goa and Saurashtra & Kutch.
- ❖ **Squally wind with speed reaching 45 kmph to 55 kmph gusting to 65 kmph** is likely to prevail along and off Somalia, Yemen, Oman coasts, most parts of westcentral Arabian sea, adjoining & some parts of southwest, eastcentral Arabian Sea; Squally weather with wind speed reaching 40 - 50 kmph gusting to 60 kmph likely to prevail along and off south Konkan, Goa coasts, some parts of southeast Arabian Sea, over few parts of westcentral & north Bay of Bengal, off North Andhra Pradesh coast; Squally weather with wind speed reaching 45 - 55 kmph gusting to 65 kmph likely to prevail over Gujarat, north Konkan coasts and adjoining sea areas, most parts of eastcentral, northeast Arabian Sea.

\*Red color warning does not mean "Red Alert" Red color warning means "Take Action"

Forecast and warning for any day is valid from 0830 hours IST of day till 0830 hours IST of next day

For more details kindly visit <https://mausam.imd.gov.in> or contact 011-2434-4599

(Service to the nation since 1875)



## 23 August (Day 4)

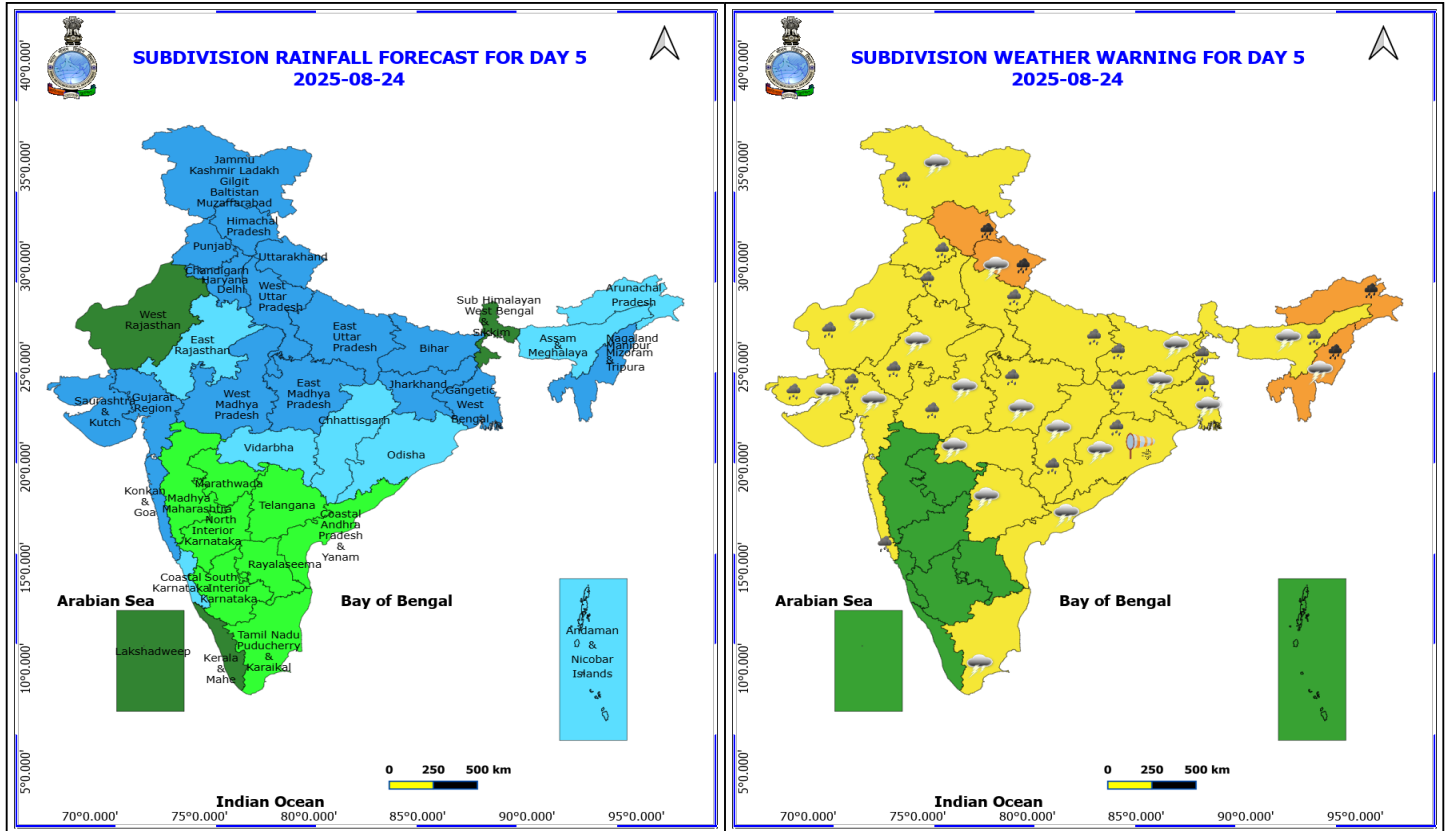
- ❖ **Heavy to Very Heavy Rainfall** likely at isolated places over Arunachal Pradesh, Assam & Meghalaya, Bihar, East Rajasthan, Haryana, Chandigarh & Delhi, Himachal Pradesh, Nagaland, Manipur, Mizoram and Tripura, Punjab and Uttarakhand.
- ❖ **Heavy Rainfall** likely at isolated places over Chhattisgarh, Gujarat State, Jammu-Kashmir-Ladakh-Gilgit-Baltistan-Muzaffarabad, Jharkhand, Konkarn & Goa, Madhya Pradesh, Odisha, Uttar Pradesh, West Bengal & Sikkim and West Rajasthan.
- ❖ **Thunderstorm accompanied with lightning & gusty winds(30-40kmph)** likely at isolated places over Bihar, Gangetic West Bengal, Jammu-Kashmir-Ladakh-Gilgit-Baltistan-Muzaffarabad, Jharkhand, Odisha and Telangana.
- ❖ **Thunderstorm accompanied with Lightning** likely at isolated places over Assam & Meghalaya, Chhattisgarh, Coastal Andhra Pradesh, Gujarat State, Madhya Pradesh, Nagaland, Manipur, Mizoram and Tripura, Rajasthan, Tamil Nadu Puducherry & Karaikal, Uttar Pradesh, Uttarakhand and Vidarbha.
- ❖ **Strong Surface Winds** likely at isolated places over Gangetic West Bengal, Odisha and Saurashtra & Kutch.
- ❖ **Squally wind with speed reaching 45 kmph to 55 kmph gusting to 65 kmph** is likely to prevail along and off Somalia, Yemen, Oman coasts, many parts of northwest Arabian Sea, most parts of westcentral Arabian sea, adjoining & some parts of southwest, eastcentral Arabian Sea; Squally weather with wind speed reaching 40 - 50 kmph gusting to 60 kmph likely to prevail along and off south Konkarn, Goa coasts, over many parts of north Bay of Bengal, along and off West Bengal, adjoining Bangladesh coast; Squally weather with wind speed reaching 45 - 55 kmph gusting to 65 kmph likely to prevail over Gujarat, off north Konkarn coasts and adjoining sea areas, most parts of eastcentral, northeast Arabian Sea.

\*Red color warning does not mean "Red Alert" Red color warning means "Take Action"

Forecast and warning for any day is valid from 0830 hours IST of day till 0830 hours IST of next day

For more details kindly visit <https://mausam.imd.gov.in> or contact 011-2434-4599

(Service to the nation since 1875)



## 24 August (Day 5)

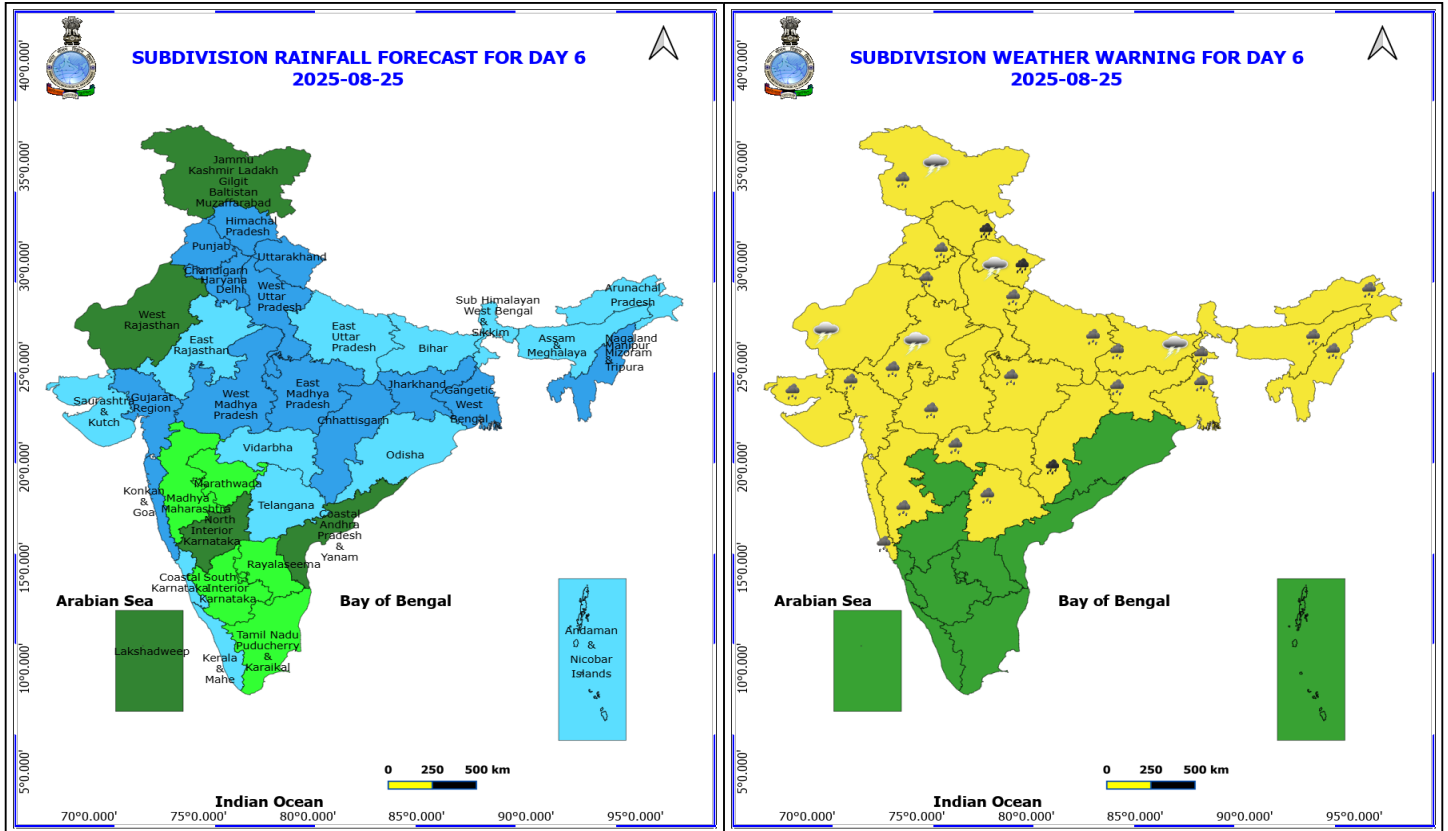
- ❖ **Heavy to Very Heavy Rainfall** likely at isolated places over Arunachal Pradesh, Himachal Pradesh, Nagaland, Manipur, Mizoram and Tripura and Uttarakhand.
- ❖ **Heavy Rainfall** likely at isolated places over Assam & Meghalaya, Bihar, Chhattisgarh, Gujarat State, Haryana, Chandigarh & Delhi, Jammu-Kashmir-Ladakh-Gilgit-Baltistan-Muzaffarabad, Jharkhand, Konkan & Goa, Madhya Pradesh, Odisha, Punjab, Rajasthan, Uttar Pradesh and West Bengal & Sikkim.
- ❖ **Thunderstorm accompanied with lightning & gusty winds(30-40kmph)** likely at isolated places over Bihar, Gangetic West Bengal, Jammu-Kashmir-Ladakh-Gilgit-Baltistan-Muzaffarabad, Jharkhand, Odisha and Telangana.
- ❖ **Thunderstorm accompanied with Lightning** likely at isolated places over Assam & Meghalaya, Chhattisgarh, Coastal Andhra Pradesh, Gujarat State, Madhya Pradesh, Nagaland, Manipur, Mizoram and Tripura, Rajasthan, Tamil Nadu Puducherry & Karaikal, Uttarakhand and Vidarbha.
- ❖ **Strong Surface Winds** likely at isolated places over Odisha.
- ❖ **Squally wind with speed reaching 45 kmph to 55 kmph gusting to 65 kmph** is likely to prevail along and off Somalia, Oman coasts, many parts of northwest Arabian Sea, most parts of westcentral Arabian sea, adjoining southwest & eastcentral Arabian Sea; Squally weather with wind speed reaching 40 - 50 kmph gusting to 60 kmph likely to prevail along and off north Konkan, Goa coasts, over most parts north adjoining westcentral Bay of Bengal, along and off north Odisha, West Bengal and Bangladesh coast; Squally weather with wind speed reaching 45 - 55 kmph gusting to 65 kmph likely to prevail over south Gujarat, off north Konkan coasts and adjoining sea areas, most parts of eastcentral, northeast Arabian Sea.

**\*Red color warning does not mean "Red Alert" Red color warning means "Take Action"**

Forecast and warning for any day is valid from 0830 hours IST of day till 0830 hours IST of next day

For more details kindly visit <https://mausam.imd.gov.in> or contact 011-2434-4599

(Service to the nation since 1875)



## 25 August (Day 6)

- ❖ **Heavy to Very Heavy Rainfall** likely at isolated places over Chhattisgarh, Himachal Pradesh and Uttarakhand.
- ❖ **Heavy Rainfall** likely at isolated places over Arunachal Pradesh, Assam & Meghalaya, Bihar, East Rajasthan, Gujarat State, Haryana, Chandigarh & Delhi, Jammu-Kashmir-Ladakh-Gilgit-Baltistan-Muzaffarabad, Jharkhand, Konkan & Goa, Madhya Maharashtra, Madhya Pradesh, Nagaland, Manipur, Mizoram and Tripura, Punjab, Telangana, Uttar Pradesh, Vidarbha and West Bengal & Sikkim.
- ❖ **Thunderstorm accompanied with lightning & gusty winds(30-40kmph)** likely at isolated places over Bihar and Jammu-Kashmir-Ladakh-Gilgit-Baltistan-Muzaffarabad.
- ❖ **Thunderstorm accompanied with Lightning** likely at isolated places over Rajasthan and Uttarakhand.

**No Fishermen Warning**

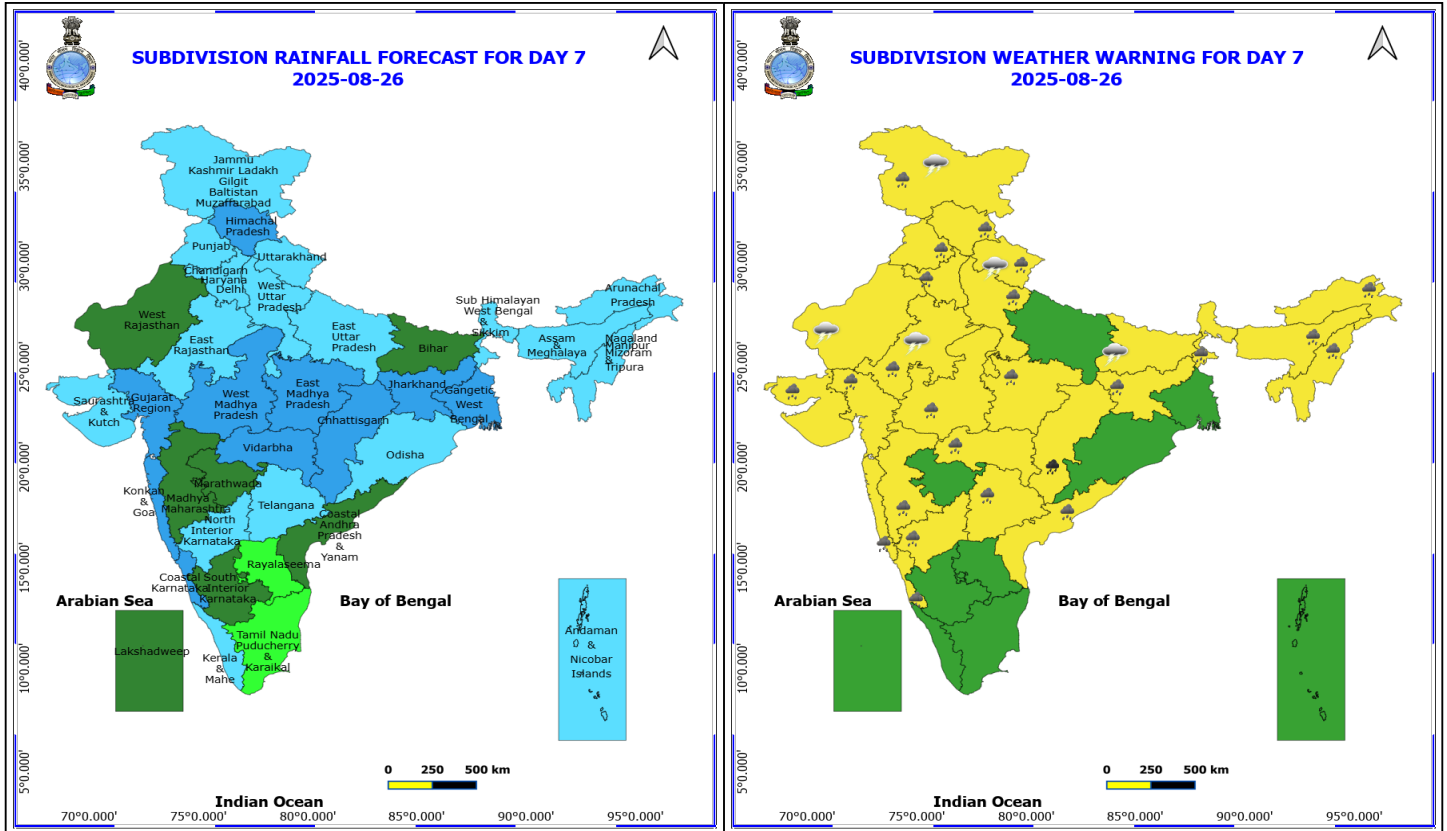
**\*Red color warning does not mean "Red Alert" Red color warning means "Take Action"**

Forecast and warning for any day is valid from 0830 hours IST of day till 0830 hours IST of next day

For more details kindly visit <https://mausam.imd.gov.in> or contact 011-2434-4599

(Service to the nation since 1875)





## 26 August (Day 7)

- ❖ **Heavy to Very Heavy Rainfall** likely at isolated places over Arunachal Pradesh, Himachal Pradesh, Nagaland, Manipur, Mizoram and Tripura and Uttarakhand.
- ❖ **Heavy Rainfall** likely at isolated places over Assam & Meghalaya, Bihar, Chhattisgarh, Gujarat State, Haryana, Chandigarh & Delhi, Jammu-Kashmir-Ladakh-Gilgit-Baltistan-Muzaffarabad, Jharkhand, Konkan & Goa, Madhya Pradesh, Odisha, Punjab, Rajasthan, Uttar Pradesh and West Bengal & Sikkim.
- ❖ **Thunderstorm accompanied with lightning & gusty winds(30-40kmph)** likely at isolated places over Bihar, Gangetic West Bengal, Jammu-Kashmir-Ladakh-Gilgit-Baltistan-Muzaffarabad, Jharkhand, Odisha and Telangana.
- ❖ **Thunderstorm accompanied with Lightning** likely at isolated places over Assam & Meghalaya, Chhattisgarh, Coastal Andhra Pradesh, Gujarat State, Madhya Pradesh, Nagaland, Manipur, Mizoram and Tripura, Rajasthan, Tamil Nadu Puducherry & Karaikal, Uttarakhand and Vidarbha.
- ❖ **Strong Surface Winds** likely at isolated places over Odisha.

**No Fishermen Warning**

**\*Red color warning does not mean "Red Alert" Red color warning means "Take Action"**

Forecast and warning for any day is valid from 0830 hours IST of day till 0830 hours IST of next day

For more details kindly visit <https://mausam.imd.gov.in> or contact 011-2434-4599

(Service to the nation since 1875)



## Flash Flood Warnings

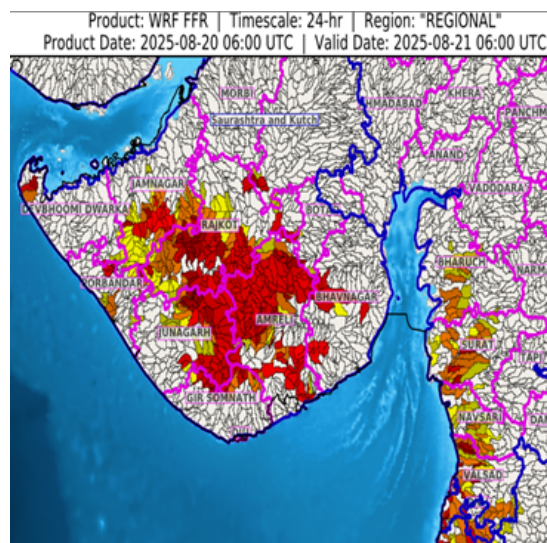
24 hours Outlook for the Flash Flood Risk (FFR) till 1130 IST of 21-08-2025 :

**Moderate to High flash flood risk** likely over few watersheds & neighbourhoods of following Met Sub-divisions during next 24 hours.

**Gujarat Region** - Dadar & Nagar Haveli, Daman, Bharuch, Navsari, Surat and Valsad districts.

**Saurashtra & Kutch** - Amreli, Bhavnagar, Botad, Devbhoomi Dwarka, Diu, Gir Somnath, Jamnagar, Junagarh, Porbandar, Rajkot, Surendranagar and Morbi districts.

Surface runoff/ Inundation may occur at some fully saturated soils & low-lying areas over Area of Concern (AoC) as shown in map due to expected rainfall occurrence in next 24 hours.



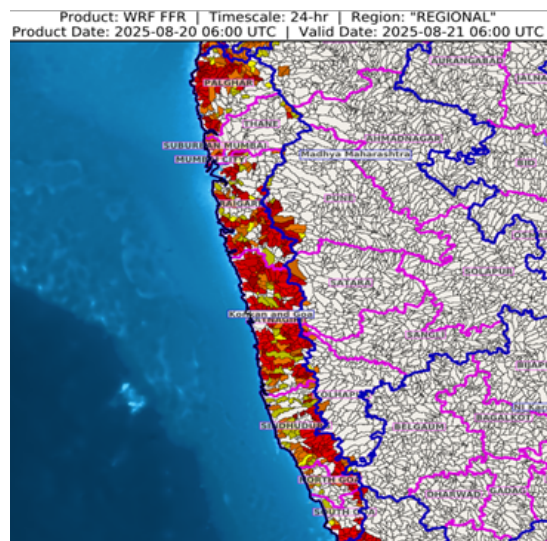
24 hours Outlook for the Flash Flood Risk (FFR) till 1130 IST of 21-08-2025 :

**Low to Moderate flash flood risk** likely over few watersheds & neighbourhoods of following Met Sub-divisions during next 24 hours.

**Konkan & Goa** - North Goa, South Goa, Mumbai City, Palghar, Raigarh, Ratnagiri, Sindhudurg, Suburban Mumbai and Thane districts.

**Madhya Maharashtra** - Kolhapur, Nasik, Pune, Sangli and Satara districts.

Surface runoff/ Inundation may occur at some fully saturated soils & low-lying areas over Area of Concern (AoC) as shown in map due to expected rainfall occurrence in next 24 hours.



24 hours Outlook for the Flash Flood Risk (FFR) till 1130 IST of 21-08-2025 :

**Low to Moderate flash flood risk** likely over few watersheds & neighbourhoods of following Met Sub-divisions during next 24 hours.

**Uttarakhand** - Almora, Bageshwar, Chamoli, Champawat, Pithoragarh, Rudraprayag and Tehri Garwal districts.

Surface runoff/ Inundation may occur at some fully

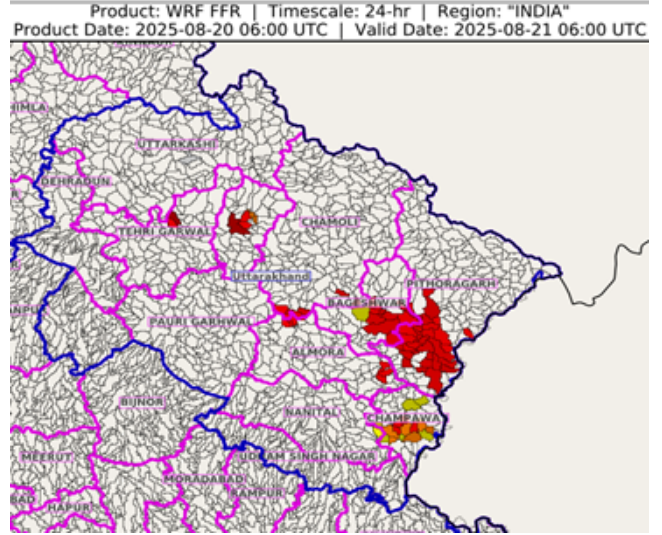
**\*Red color warning does not mean "Red Alert" Red color warning means "Take Action"**

Forecast and warning for any day is valid from 0830 hours IST of day till 0830 hours IST of next day

For more details kindly visit <https://mausam.imd.gov.in> or contact 011-2434-4599

(Service to the nation since 1875)

saturated soils & low-lying areas over Area of Concern (AoC) as shown in map due to expected rainfall occurrence in next 24 hours.





**Table-1**

## 7 Days Rainfall Forecast

S.No.	Subdivision	20-Aug	21-Aug	22-Aug	23-Aug	24-Aug	25-Aug	26-Aug
		Day 1	Day 2	Day 3	Day 4	Day 5	Day 6	Day 7
1	ANDAMAN & NICOBAR ISLANDS	WS	WS	WS	WS	FWS	FWS	FWS
2	ARUNACHAL PRADESH	FWS	WS	WS	WS	FWS	FWS	FWS
3	ASSAM & MEHGHALAYA	WS	WS	WS	WS	WS	FWS	FWS
4	N. M. M. & T.	FWS	FWS	WS	WS	WS	FWS	FWS
5	S.H. WEST BENGAL & SIKKIM	FWS	FWS	FWS	SCT	SCT	FWS	FWS
6	GANGETIC WEST BENGAL	WS	WS	WS	WS	WS	WS	WS
7	ODISHA	FWS	FWS	FWS	FWS	FWS	FWS	FWS
8	JHARKHAND	WS	WS	WS	WS	WS	WS	WS
9	BIHAR	FWS	FWS	WS	WS	WS	FWS	SCT
10	EAST UTTAR PRADESH	ISOL	FWS	WS	WS	WS	FWS	FWS
11	WEST UTTAR PRADESH	ISOL	SCT	FWS	FWS	WS	WS	FWS
12	UTTARAKHAND	WS	FWS	WS	WS	WS	WS	FWS
13	HARYANA, CHD & DELHI	SCT	SCT	FWS	WS	WS	WS	FWS
14	PUNJAB	SCT	ISOL	FWS	WS	WS	WS	FWS
15	HIMACHAL PRADESH	FWS	SCT	FWS	WS	WS	WS	WS
16	JAMMU AND KASHMIR AND LADAKH	SCT	ISOL	SCT	WS	WS	SCT	FWS
17	WEST RAJASTHAN	ISOL	SCT	SCT	SCT	SCT	SCT	SCT
18	EAST RAJASTHAN	FWS	FWS	FWS	FWS	FWS	FWS	FWS
19	WEST MADHYA PRADESH	WS	WS	FWS	FWS	WS	WS	WS
20	EAST MADHYA PRADESH	WS	FWS	FWS	WS	WS	WS	WS
21	GUJRAT REGION	WS	WS	WS	WS	WS	WS	WS
22	SAURASHTRA & KUTCH	WS	WS	WS	WS	WS	FWS	FWS
23	KONKAN & GOA	WS	WS	WS	WS	WS	WS	WS
24	MADHYA MAHARASHTRA	FWS	SCT	ISOL	ISOL	ISOL	ISOL	SCT
25	MARATHWADA	ISOL	ISOL	ISOL	ISOL	ISOL	ISOL	SCT
26	VIDARBHA	FWS	FWS	SCT	SCT	FWS	FWS	WS
27	CHATTISGARH	FWS	FWS	FWS	FWS	FWS	WS	WS
28	COASTAL ANDHRA PRADESH	SCT	ISOL	ISOL	ISOL	ISOL	SCT	SCT
29	TELANGANA	FWS	SCT	ISOL	ISOL	ISOL	FWS	FWS
30	RAYALASEEMA	ISOL	ISOL	ISOL	ISOL	ISOL	ISOL	ISOL
31	TAMILNADU & PUDUCHERRY	ISOL	ISOL	SCT	SCT	ISOL	ISOL	ISOL
32	COSTAL KARNATAKA	WS	WS	FWS	FWS	FWS	FWS	WS
33	NORTH INTERIOR KARNATAKA	FWS	SCT	SCT	SCT	ISOL	SCT	FWS
34	SOUTH INTERIOR KARNATAKA	SCT	SCT	SCT	SCT	ISOL	ISOL	SCT
35	KERALA	FWS	SCT	SCT	SCT	SCT	FWS	FWS
36	LAKSHDWEEP	SCT	SCT	SCT	SCT	SCT	SCT	SCT

Legend	Category	%Stations
WS	Widespread/Most Places	76-100
FWS	Fairly Widespread/Many Places	51-75
SCT	Scattered/ A Few Places	26-50
ISOL	Isolated Places	1-25
DRY	No Rain	0

\*Red color warning does not mean "Red Alert" Red color warning means "Take Action"

Forecast and warning for any day is valid from 0830 hours IST of day till 0830 hours IST of next day

For more details kindly visit <https://mausam.imd.gov.in> or contact 011-2434-4599

(Service to the nation since 1875)

Fig. 1: Maximum Temperatures Dated 2025-08-20

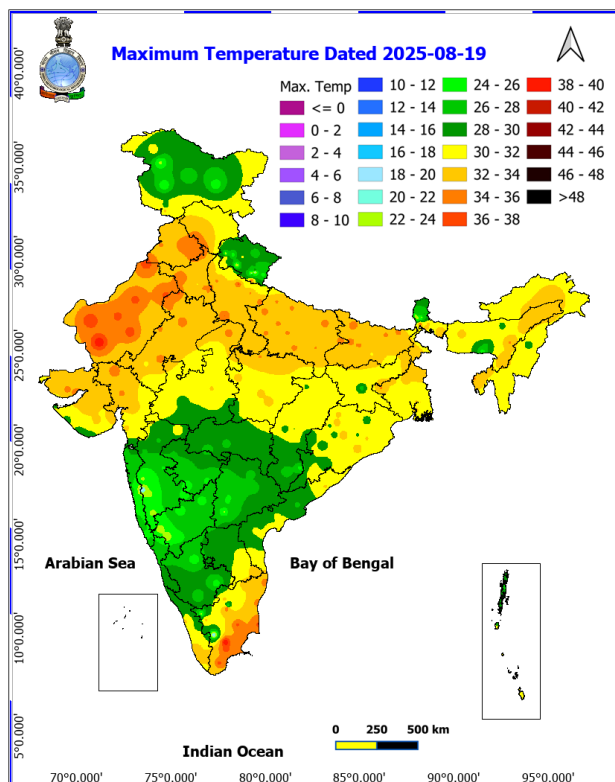


Fig. 2: Departure of Maximum Temp. Dated 2025-08-20

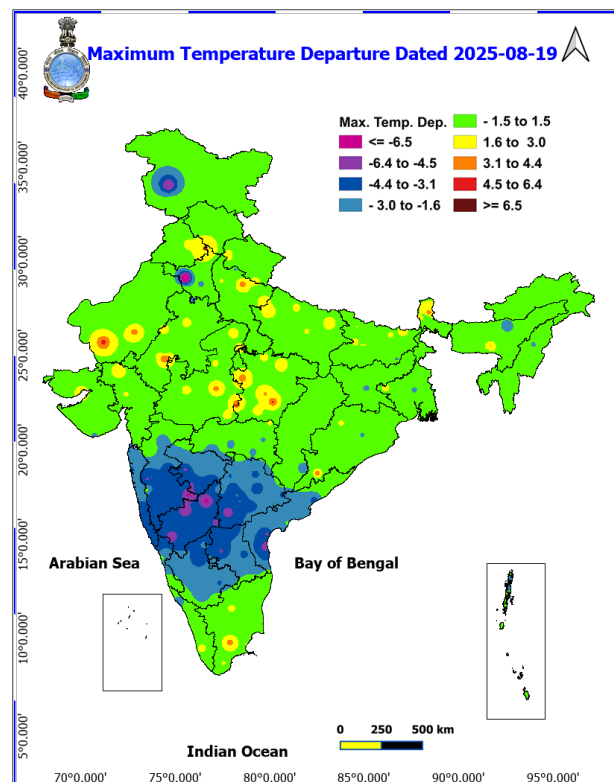


Fig. 3: Minimum Temperatures Dated 2025-08-20

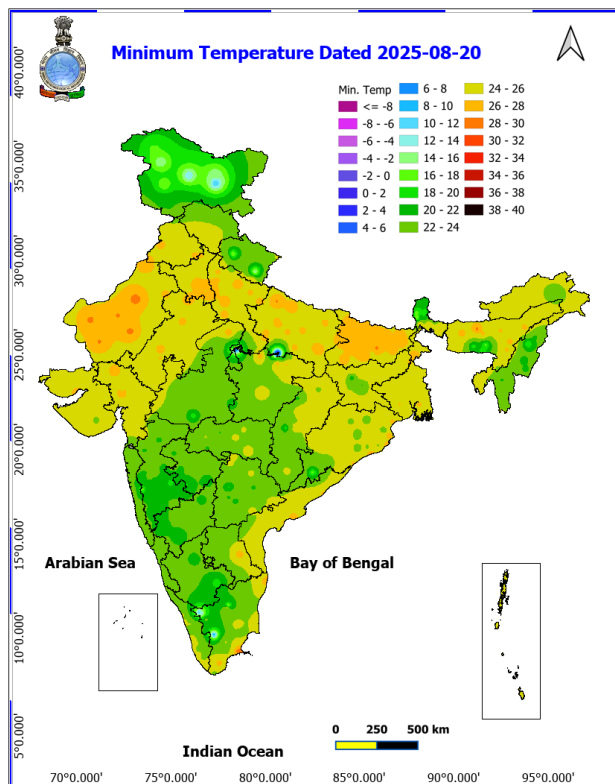
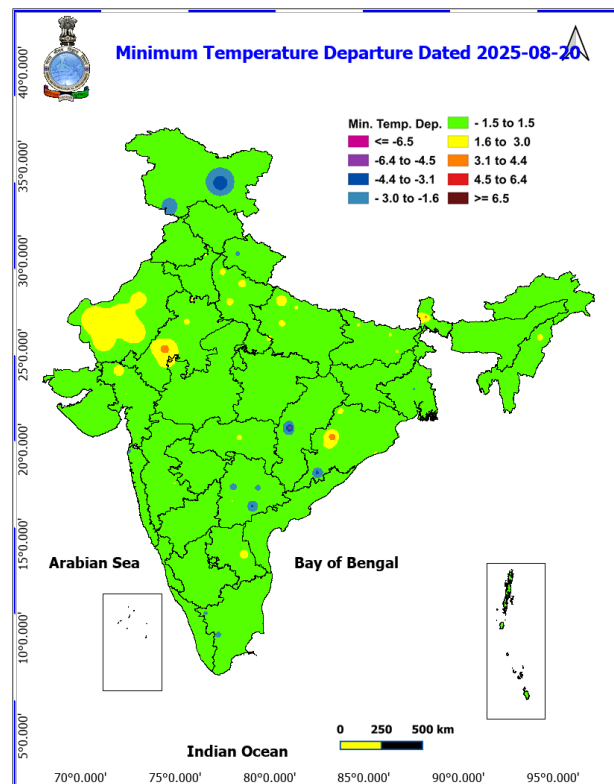
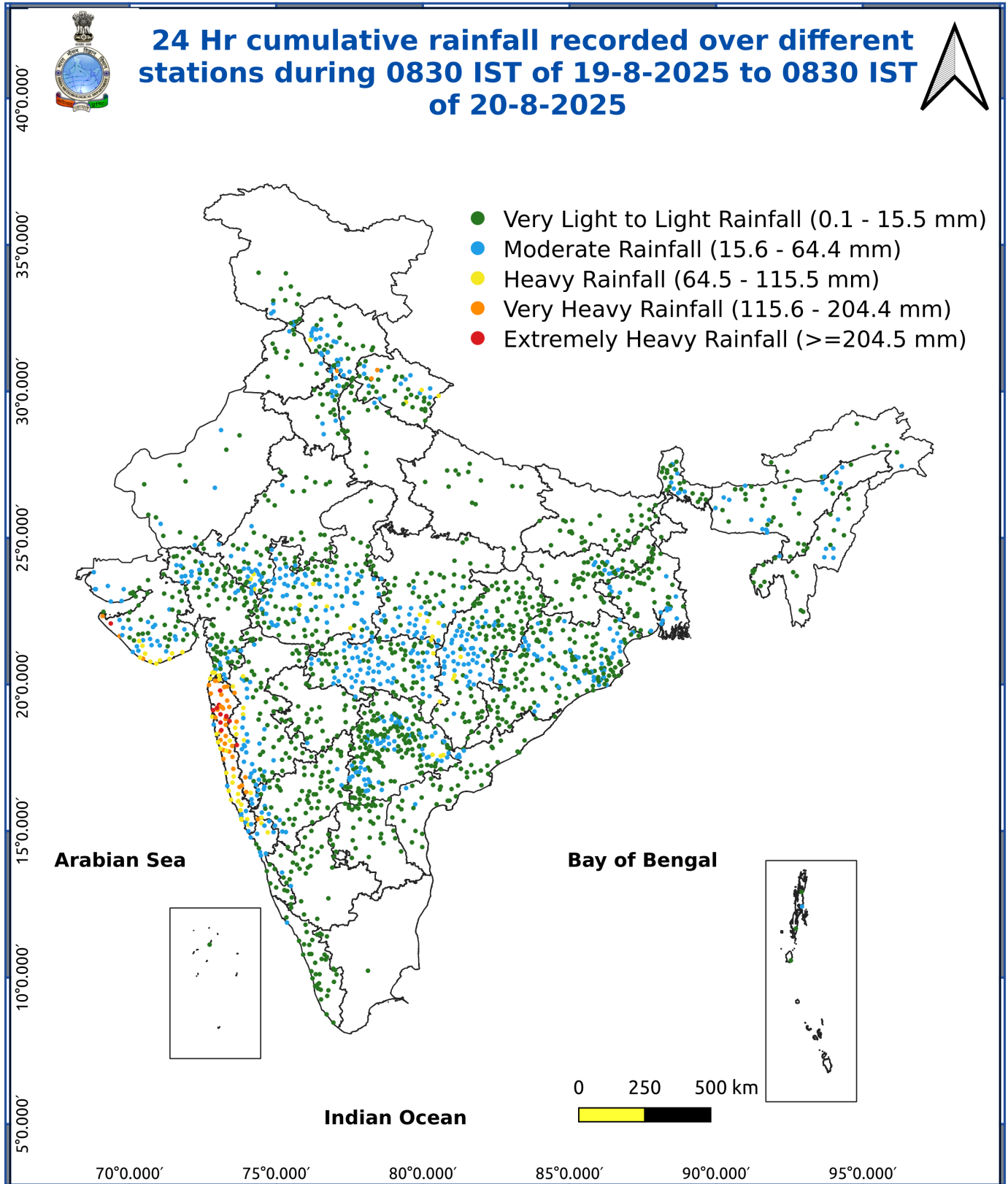


Fig. 4: Departure of Minimum Temp. Dated 2025-08-20







\*Red color warning does not mean "Red Alert" Red color warning means "Take Action"

Forecast and warning for any day is valid from 0830 hours IST of day till 0830 hours IST of next day

For more details kindly visit <https://mausam.imd.gov.in> or contact 011-2434-4599

(Service to the nation since 1875)



**Extremely to Exceptionally heavy rainfall ( $\geq 30$  cm) very likely over Saurashtra, Kutch and South Gujarat region on 20<sup>th</sup> August and over Saurashtra on 21<sup>st</sup> August.**

**Extremely heavy rainfall** very likely at isolated places over North Madya Maharashtra on 20<sup>th</sup> August.

Isolated **very heavy rainfall** likely to continue over **Konkan (including Mumbai) & Goa, south Madhya Pradesh on 20<sup>th</sup>**; Madhya Maharashtra on 21<sup>st</sup>; Gujarat State during 20<sup>th</sup>-22<sup>nd</sup>; Jharkhand on 22<sup>nd</sup>; Bihar on 22<sup>nd</sup> & 23<sup>rd</sup>; Chhattisgarh on 25<sup>th</sup> & 26<sup>th</sup>; Uttarakhand, Himachal Pradesh during 23<sup>rd</sup>-25<sup>th</sup>; Punjab, Haryana, East Rajasthan on 23<sup>rd</sup>; Arunachal Pradesh, Tripura, Mizoram during 21<sup>st</sup>-24<sup>th</sup> and Assam & Meghalaya during 20<sup>th</sup>-23<sup>rd</sup> August.

#### Impact Expected

- Localized Flooding of roads, water logging in low lying areas and closure of underpasses mainly in urban areas of the above region.
- Occasional reduction in visibility due to heavy rainfall.
- Disruption of traffic in major cities due to water logging in roads leading to increased travel time.
- Minor damage to kutcha roads.
- Possibilities of damage to vulnerable structure.
- Localized Landslides/Mudslides/landslips/mudslips/landsinks/mudsinks.
- Damage to horticulture and standing crops in some areas due to inundation.
- It may lead to riverine flooding in some river catchments (for riverine flooding please visit Web page of CWC)

#### Action Suggested

- Check for traffic congestion on your route before leaving for your destination.
- Follow any traffic advisories that are issued in this regard.
- Avoid going to areas that face the water logging problems often.
- Avoid staying in vulnerable structure.

#### Agromet advisories for various parts of the country

##### Agromet advisories for likely impact of Heavy / Heavy to Very Heavy / Extremely Heavy Rainfall

In **Maharashtra**, make arrangements to drain out excess water from rice fields maintaining 2.5 to 5 cm water level in **Konkan** and **ghat areas** of **Madhya Maharashtra**. To prevent waterlogging, make provision for draining out excess water from fields of finger millet, turmeric, groundnut, vegetables and fruit orchards in **Konkan**; maize, groundnut, soybean, vegetables and fruit orchards in **ghat areas** of **Madhya Maharashtra**; soybean and cotton in **West Vidarbha** and rice, soybean, cotton, pigeon pea, vegetables and fruit orchards in **East Vidarbha**.

In **Gujarat**, provide mechanical support to horticultural crops and staking or support to vegetables and young fruit plants to avoid lodging due to heavy rains and strong surface winds. Make arrangements to drain out excess water from fields of rice, sugarcane, vegetables and tuber crops in **South Gujarat Heavy Rainfall Zone**; rice, cotton, sugarcane and pigeon pea in **South Gujarat Zone**; groundnut, cotton, soybean, black gram, green gram, sesame and pigeon pea in **South Saurashtra Zone**; groundnut, cotton and sesame in **North Saurashtra Zone** and rice, cotton, green gram, black gram, pigeon pea, pearl millet and vegetables in **Bhal and Coastal Zone**.

In **Madhya Pradesh**, provide adequate drainage in fields of maize, soybean, cotton and vegetables in **Satpura Plateau Zone**; soybean, maize and vegetables in **Malwa Plateau Zone**; rice, soybean, maize, sugarcane and vegetables in **Central Narmada Valley Zone**; soybean, pigeon pea, cotton and vegetables in **Nimar Valley Zone** and maize, soybean, black gram, cotton, and pigeon pea in **Vindhyan Plateau Zone**.

**\*Red color warning does not mean "Red Alert" Red color warning means "Take Action"**

**Forecast and warning for any day is valid from 0830 hours IST of day till 0830 hours IST of next day**

**For more details kindly visit <https://mausam.imd.gov.in> or contact 011-2434-4599**

**(Service to the nation since 1875)**

In **Chhattisgarh**, drain out excess water from fields of *kharif* maize, rice, minor millets, pulses and vegetables in **Bastar Plateau Zone**.

In **Karnataka**, provide adequate drainage facilities in rice and ginger fields, and plantations of arecanut, coconut and banana in **Coastal Zone**; fields of rice, maize, cotton, ginger and plantations of arecanut in **Hill Zone** and fields of rice, maize and plantations of arecanut and coconut in **Southern Transition Zone**.

In **Telangana**, drain out excess water from fields of rice, cotton, maize, soybean, pigeon pea, turmeric and vegetables in **Northern Telangana Zone** and rice, cotton, soybean, vegetables and vegetable nurseries in **Southern Telangana Zone**.

In **Himachal Pradesh**, maintain proper drainage channels in ginger, turmeric and maize fields in **Mid Hills Sub Humid Zone** and rice, maize and vegetable fields in **Sub Montane and Low Hills Sub Tropical Zone**. In **High Hills Sub Temperate Wet Zone**, harvest ripened tomatoes and ensure proper drainage in maize, kidney bean, vegetables and orchards.

In **Uttarakhand**, maintain proper drainage channels in fields of soybean, maize, pulses, finger millet, ginger, vegetable fields and fruit orchards in **Hill Zone**; barnyard millet, finger millet and already sown green gram in **Sub Humid Sub Tropical Zone**. Ensure proper drainage in rice, maize, soybean, green gram, and vegetables in Nainital district.

In **Punjab**, maintain proper drainage in chilli fields and remove stagnant rainwater immediately after rainfall in **Undulating Plain Zone**. In **Sub-Montane Undulating Zone**, ensure proper drainage in sugarcane maize, soybean and green gram.

In **Bihar**, ensure proper drainage from standing crops such as pigeon pea, turmeric, yam, sunflower and maize as well as from vegetable nurseries in **South Bihar Alluvial Zone**.

In **Assam**, provide mechanical support to orchards and staking in vegetables. Harvest all the matured vegetables (tomato, cucumber, brinjal etc) at the earliest in **Hill Zone**.

In **Meghalaya**, maintain proper drainage in the field of ginger, vegetable crops and orchards. Provide support (staking) to banana plants to prevent lodging. Maintain a thin 2-3 cm layer of stagnant water in rice fields after transplanting.

In **Arunachal Pradesh**, ensure proper drainage in rice fields and maintain 5-7 cm water level. Maintain drainage channels in finger millet, banana and vegetable fields. Strengthen the bunds in millet fields to prevent erosion and seedling washout.

### Livestock / Fishery

Keep the animals inside the shed during heavy rainfall and provide them balanced feed.

Store feed and fodder in a safe place to prevent spoilage.

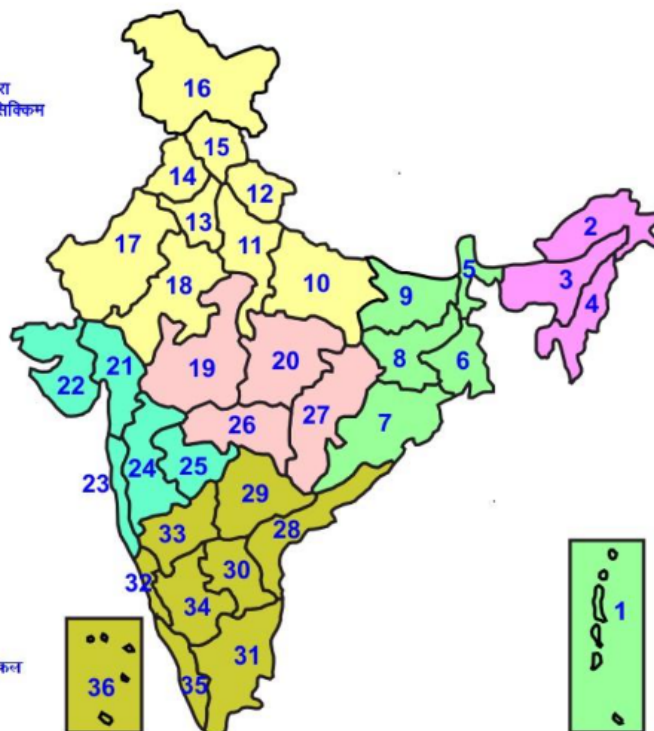
Construct an outlet with proper netting around the ponds to drain out excess water, thereby preventing fish from escaping in case of overflow.

### Agromet advisories for likely impact of Thunderstorm / Gusty Winds / Squally Winds

Provide mechanical support to horticultural crops and staking or support to vegetables and young fruit plants / fruit-bearing plants to avoid lodging due to strong winds.

## LEGENDS

- 1 अंडमान और निकोबार द्वीप समुह
- 2 अरुणाचल प्रदेश
- 3 असम और मेघालय
- 4 नागालैंड मनीपुर मीजोरम और त्रिपुरा
- 5 उप हिमालय पश्चिम बंगाल एवं सिक्किम
- 6 पश्चिम बंगाल
- 7 ओडिसा
- 8 झारखंड
- 9 बिहार
- 10 पूर्वी उत्तर प्रदेश
- 11 पश्चिम उत्तर प्रदेश
- 12 उत्तराखंड
- 13 हरियाणा चंडीगढ़ एवं दिल्ली
- 14 पंजाब
- 15 हिमाचल प्रदेश
- 16 जम्मू एवं कश्मीर एवं लद्दाख
- 17 पश्चिम राजस्थान
- 18 पूर्वी राजस्थान
- 19 पश्चिम मध्य प्रदेश
- 20 पूर्वी मध्य प्रदेश
- 21 गुजरात क्षेत्र
- 22 सौराष्ट्र एवं कच्छ
- 23 कोंकण एवं गोवा
- 24 मध्य महाराष्ट्र
- 25 मराठावाड़ा
- 26 विदर्भ
- 27 छत्तीसगढ़
- 28 तटीय आंध्र प्रदेश एवं यनम
- 29 तेलंगाना
- 30 रायलसीमा
- 31 तमिलनाडु, पुदुचेरी एवं कराईकल
- 32 तटिय कर्नाटक
- 33 आंतरिक उत्तरी कर्नाटक
- 34 आंतरिक दक्षिणी कर्नाटक
- 35 केरल एवं माहे
- 36 लक्षद्वीप



1. Andaman & Nicobar Islands
2. Arunachal Pradesh
3. Assam & Meghalaya
4. Nagaland, Manipur, Mizoram & Tripura
5. Sub-Himalayan West Bengal & Sikkim
6. Gangetic West Bengal
7. Orissa
8. Jharkhand
9. Bihar
10. East Uttar Pradesh
11. West Uttar Pradesh
12. Uttarakhand
13. Haryana, Chd & Delhi
14. Punjab
15. Himachal Pradesh
16. Jammu & Kashmir and Ladakh
17. West Rajasthan
18. East Rajasthan
19. West Madhya Pradesh
20. East Madhya Pradesh
21. Gujarat
22. Saurashtra
23. Konkan & Goa
24. Madhya Maharashtra
25. Marathwada
26. Vidharbha
27. Chhattisgarh
28. Coastal Andhra Pradesh & Yanam
29. Telangana
30. Rayalaseema
31. Tamilnadu, Puducherry & Karaikal
32. Coastal Karnataka
33. North Interior Karnataka
34. South Interior Karnataka
35. Kerala & Mahe
36. Lakshadweep

## SPATIAL DISTRIBUTION (% of Stations reporting)


% Stations	Category	% Stations	Category
76-100	Widespread (WS/Most Places)	26-50	Scattered (SCT/ A Few Places)
51-75	Fairly Widespread (FWS/ Many Places)	1-25	Isolated (ISOL)


## Subdivision Colour


- NO WARNING
- WATCH (BE UPDATED)
- ALERT (BE PREPARED TO TAKE ACTION)
- WARNING (TAKE ACTION)

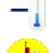
## Probabilistic Forecast


Terms	Probability of Occurrence (%)
Unlikely	< 25
Likely	25 - 50
Very Likely	50 - 75
Most Likely	> 75


-  Heavy Rain


 Thunderstorm & Lightning


 Strong surface winds


 Cold Wave


 Hot & Humid


 Very Heavy Rain


 Hailstorm


 Heat Wave


 Cold Day


 Extremely Heavy Rain


 Dust Storm


 Hot Day

 Ground Frost

 Heavy Snow

 Dust Raising Winds

 Warm Night

 Fog

\*Red color warning does not mean "Red Alert" Red color warning means "Take Action"

Forecast and warning for any day is valid from 0830 hours IST of day till 0830 hours IST of next day

For more details kindly visit <https://mausam.imd.gov.in> or contact 011-2434-4599

(Service to the nation since 1875)



## LEGENDS

### WARNING

<b>WARNING (TAKE ACTION)</b>
<b>ALERT (BE PREPARED)</b>
<b>WATCH (BE UPDATED)</b>
<b>NO WARNING (NO ACTION)</b>

### Probabilistic Forecast

Terms	Probability of Occurrence (%)
Unlikely	< 25
Likely	25 - 50
Very Likely	50 - 75
Most Likely	> 75



Heavy: 64.5 to 115.5 mm/cm \*  
Very Heavy: 115.6 to 204.4 mm/cm \*  
Extremely Heavy: > 204.4 mm/cm \*



When maximum temperature of a station reaches  $\geq 40^{\circ}\text{C}$  for plains and  $\geq 30^{\circ}\text{C}$  for hilly regions  
(a) Based on Departure from normal

Heat Wave: Maximum Temperature Departure from normal  $4.5^{\circ}\text{C}$  to  $6.4^{\circ}\text{C}$ .  
Severe Heat Wave: Maximum Temperature Departure from normal  $\geq 6.5^{\circ}\text{C}$

(b). Based on Actual maximum temperature

Heat Wave: When actual maximum temperature  $\geq 45^{\circ}\text{C}$ .  
Severe Heat Wave: When actual maximum temperature  $\geq 47^{\circ}\text{C}$

(c). Criteria for heat wave for coastal stations

When maximum temperature departure is  $> 4.5^{\circ}\text{C}$  from normal. Heat Wave may be described provided maximum temperature  $\geq 37^{\circ}\text{C}$



When maximum temperature remains  $40^{\circ}\text{C}$

Warm Night: When minimum temperature departure  $4.5^{\circ}\text{C}$  to  $6.4^{\circ}\text{C}$ .  
Severe Warm Night: When minimum temperature departure  $> 6.4^{\circ}\text{C}$ .



When minimum temperature of a station  $\leq 10^{\circ}\text{C}$  for plains and  $\leq 0^{\circ}\text{C}$  for hilly regions.

(a). Based on departure

Cold Wave: Minimum Temperature Departure from normal  $-4.5^{\circ}\text{C}$  to  $-6.4^{\circ}\text{C}$ .  
Severe Cold Wave: Minimum Temperature Departure from normal  $\leq -6.5^{\circ}\text{C}$

(b) Based on actual Minimum Temperature (for Plains only)

Cold Wave: When Minimum Temperature is  $\leq 4.0^{\circ}\text{C}$   
Severe Cold Wave: When Minimum Temperature is  $\leq 2.0^{\circ}\text{C}$

(c) For Coastal Stations

When Minimum Temperature departure is  $\leq -4.5^{\circ}\text{C}$  & actual Minimum Temperature is  $\leq 15^{\circ}\text{C}$



When minimum temperature of a station  $\leq 10^{\circ}\text{C}$  for plains and  $\leq 0^{\circ}\text{C}$  for hilly regions  
Based on departure

Cold Day: Maximum Temperature Departure from normal  $-4.5^{\circ}\text{C}$  to  $-6.4^{\circ}\text{C}$ .  
Severe Cold Day: Maximum Temperature Departure from normal  $\leq -6.5^{\circ}\text{C}$



Phenomenon of small droplets suspended in air and the horizontal visibility  $< 1\text{km}$

Moderate Fog: When the visibility between 500-200 metres  
Dense Fog: when the visibility between 50-200 metres  
Very Dense Fog: when the visibility  $< 50$  metres



Sudden electrical discharges manifested by a flash of light (Lightning) and a sharp rumbling sound (thunder)



An ensemble of particles of dust or sand energetically lifted to great heights by a strong and turbulent wind.



Ice deposits on ground

Air temperature  $\leq 4^{\circ}\text{C}$  (over Plains)



A strong wind that rises suddenly, lasts for at least 1 minute.

Moderate: Wind speed 52-61 kmph  
Severe: Wind speed 62-87 kmph  
Very Severe: Wind speed  $> 87$  kmph



Effect of various waves in the sea over specific area

Rough to very rough: Wind speed 41-62 kmph (22-33 knots) & Wave height 2.5-6 metre  
High to very high: Wind speed 63-117 kmph (34-63 knots) & Wave height 6-14 metre  
Phenomenal: Wind speed  $> 117$  kmph ( $> 63$  knots) & Wave height  $> 14$  metre



Cyclonic Storm: Wind speed 62-87 kmph (34-47 knots)

Severe Cyclonic Storm: Wind speed 88-117 kmph (48-63 knots)  
Very Severe Cyclonic Storm: Wind speed 118-165 kmph (64-89 knots)  
Extremely Severe Cyclonic Storm: Wind speed 166-220 kmph (90-119 knots)  
Super Cyclone Storm: Wind speed  $> 220$  kmph ( $> 119$  knots)

\*Red color warning does not mean "Red Alert" Red color warning means "Take Action"

Forecast and warning for any day is valid from 0830 hours IST of day till 0830 hours IST of next day

For more details kindly visit <https://mausam.imd.gov.in> or contact 011-2434-4599

(Service to the nation since 1875)