

2025-08-22

Time of Issue: 13:49:00 hours IST
(Mid-Day)

ALL INDIA WEATHER SUMMARY AND FORECAST BULLETIN

Significant Weather Features

Weather Systems, Forecast and Warnings:

East & Central India:

- **Extremely heavy rainfall** very likely over Jharkhand and Odisha on 22nd August.
- Isolated **heavy rainfall** likely over Madhya Pradesh, Chhattisgarh during next 6-7 days; Odisha, Jharkhand, Bihar, West Bengal during 22nd-26th; Vidarbha on 27th & 28th August with isolated **very heavy rainfall over West Madhya Pradesh, Bihar on 22nd & 23rd; Gangetic West Bengal on 22nd, Jharkhand on 23rd and Chhattisgarh on 23rd August**
- Light to moderate rainfall at most/many places accompanied with thunderstorm & lightning likely over the region during next 5 days.

Northwest India:

- **Extremely heavy rainfall** very likely over East Rajasthan on 22nd & 23rd August.
- Isolated **heavy rainfall** likely over Himachal Pradesh, Uttarakhand, Rajasthan during next 7 days; Haryana during 22nd-27th; Uttar Pradesh during 22nd-25th; Punjab during 23rd-26th; Jammu & Kashmir on 23rd & 24th August with **isolated very heavy rainfall over East Rajasthan during 24th-26th; Haryana on 23rd; Uttarakhand during 22nd-24th; West Rajasthan during 22nd-25th August.**
- Light/moderate rainfall at most/many places accompanied with thunderstorm & lightning likely over Jammu-Kashmir-Ladakh-Gilgit-Baltistan-Muzaffarabad, Uttarakhand & Rajasthan during next 7 days.

West India:

- **Heavy to very heavy rainfall is very likely to continue over north Gujarat till 23rd August. A fresh spell of Heavy to Very Heavy Rainfall over Gujarat state from 25th August onwards.**
- **Heavy rainfall** is very likely to continue over Konkan on 25th; Madhya Maharashtra on 26th and **very heavy rainfall over Konkan & Goa during 26th-28th and ghat areas of Madhya Maharashtra on 27th & 28th August.**
- Strong surface winds (speed reaching 40-50 kmph) very likely over Gujarat coast during next 5 days and over Maharashtra coast 25th & 26th August.
- Light to moderate rainfall at most/many places very likely over the region during next 7 days.

Northeast India:

- Isolated **heavy rainfall** likely to continue over Assam & Meghalaya, Nagaland, Manipur, Mizoram & Tripura during 22nd-27th and Arunachal Pradesh during 22nd-25th August.
- Light/moderate rainfall at many places accompanied with thunderstorm & lightning likely during next 2 days.

South Peninsular India:

- Isolated **heavy rainfall** likely over Coastal Karnataka, Kerala during 26th-28th; Coastal Andhra Pradesh on 22nd, 26th & 27th August.
- Light to moderate rainfall at most/many places accompanied with thunderstorm & lightning likely over Tamil Nadu, Telangana on 22nd & 23rd; Coastal Andhra Pradesh & Yanam and interior Karnataka during next 5 days.

*Red color warning does not mean "Red Alert" Red color warning means "Take Action"

Forecast and warning for any day is valid from 0830 hours IST of day till 0830 hours IST of next day

For more details kindly visit <https://mausam.imd.gov.in> or contact 011-2434-4599

(Service to the nation since 1875)

Main Weather Observations:

❖ **Rainfall distribution** (from 0830 hours IST of yesterday to 0830 hours IST of today): **at most places** over Assam & Meghalaya, Sub Himalayan West Bengal & Sikkim, Gangetic West Bengal, Odisha, Jharkhand, East Rajasthan, West Madhya Pradesh, Gujarat Region, Saurashtra & Kutch, Konkan & Goa, Vidarbha, Chhattisgarh and Coastal Karnataka; **at many places** over Arunachal Pradesh, Nagaland, Manipur, Mizoram & Tripura, East Uttar Pradesh, East Madhya Pradesh and Madhya Maharashtra; **at a few places** over Andaman & Nicobar Islands, Bihar, Uttarakhand, West Rajasthan, North Interior Karnataka, South Interior Karnataka and Lakshadweep; **at isolated places** over West Uttar Pradesh, Haryana-Chandigarh-Delhi, Punjab, Himachal Pradesh, Jammu-Kashmir-Ladakh-Gilgit-Baltistan-Muzaffarabad, Marathwada, Coastal Andhra Pradesh & Yanam, Telangana, Rayalaseema, Tamil Nadu, Puducherry & Karaikal and Kerala & Mahe;

❖ **Significant rainfall recorded(in cm)** (from 0830 hours IST of yesterday to 0830 hours IST of today): **East Rajasthan:** Sawaimadhopur Tesil SR (dist Sawai Madhopur) 25; Patan (dist Bundi) 21; Bijoliya SR (dist Bhilwara) 17; Chothkabarwara SR (dist Sawai Madhopur), Degod SR (dist Kota) 15 Each; Ladpura SR (dist Kota) 14; Kota-aero (dist Kota), Malerainadunger SR (dist Sawai Madhopur) 13 Each; Bhungra SR (dist Banswara) 12; Kishanganj (dist Baran) 11; Mangrol (dist Baran), Anta SR (dist Baran) 10 Each; Banswara SR (dist Banswara), Jahazpur (dist Bhilwara), Talera SR (dist Bundi), Khandar SR (dist Sawai Madhopur), Pipalda SR (dist Kota) 9 Each; Baran (dist Baran), Badesar SR (dist Chittorgarh), Nimbahera (dist Chittorgarh), Arnod SR (dist Pratapgarh) 8 Each; Dhambola (dist Dungarpur), Udaipur/D-aero (dist Udaipur) 7 Each; Uniara/aligarh (dist Tonk), Sangod (dist Kota), Gogunda SR (dist Udaipur), Pipalkhunt SR (dist Pratapgarh), Pratapgarh (dist Pratapgarh) 6 Each; **Assam & Meghalaya:** Mawsynram (dist East Khasi Hills) 19; Cherrapunji (dist East Khasi Hills) 11; Cherrapunji(rkm) (dist East Khasi Hills), Khanapara (dist Kamrup Metropolitan) 10 Each; Shella (dist East Khasi Hills), Mawkyrwat (dist South West Khasi Hills) 9 Each; Rangia (dist Kamrup (rural)), Nongstein (dist West Khasi Hills) 7 Each; **Gangetic West Bengal:** Panagarh (IAF) (dist Paschim Bardhaman) 19; Labpur (dist Birbhum) 13; Manteswar (dist Purba Bardhaman) 12; Burdwan PTO (dist Purba Bardhaman) 11; Bankura(CWC) (dist Bankura), Kandi (dist Murshidabad), Berhampore (dist Murshidabad), Sagar Island PTO (dist South 24 Parganas) 10 Each; Canning (dist South 24 Parganas) 8; Rampurhat (DRMS) (dist Birbhum), Bankura (dist Bankura), Mankar (dist Purba Bardhaman), Burnpur (dist Paschim Bardhaman), Asansol (dist Paschim Bardhaman) 7 Each; Mohanpur (dist West Midnapore), Gheropara (dist Birbhum), Harinkhola (dist Hooghly), Asansol(CWC) (dist Paschim Bardhaman), Amfu Kakdwip (dist South 24 Parganas), Mo Saltlake (dist North 24 Parganas), Barrackpur(Iaf) (dist North 24 Parganas) 6 Each; **Jharkhand:** Goikera (dist West Singhbhum) 16; Kuru (dist Lohardaga) 13; Nandadih (dist Giridih), Bau Kanke (dist Ranchi), Ghagra (dist Gumla) 9 Each; Barkisuriya (dist Giridih) 8; Nimdih (dist Seraikela-kharsawan), Maheshpur (dist Pakur), Padma Dvc (dist Hazaribag) 6 Each; **West Madhya Pradesh:** Badoda (dist Sheopur) 15; Jaora (dist Ratlam), Karhal (dist Sheopur) 10 Each; Manasa (dist Neemuch) 9; Sheopur-aws (dist Sheopur) 8; Jawad (dist Neemuch) 7; Sailana (dist Ratlam), Kolaras (dist Shivpuri), Piploda (dist Ratlam), Pohri (dist Shivpuri), Barod (dist Agar-malwa), Dhundhadaka (dist Mandsaur) 6 Each; **Odisha:** Tensa (dist Sundargarh) 14; Deogaon (dist Jharsuguda) 13; Jharsuguda (dist Jharsuguda) 11; Laikera (dist Jharsuguda), Kirmira (dist Jharsuguda) 10 Each; Gurundia (dist Sundargarh), Lephripa (dist Sundargarh) 8 Each; Burla (dist Sambalpur), Swam-patna (dist Keonjhar), Kalinga (dist Kandhamal) 7 Each; Hirakud (dist Sambalpur), Nawana (dist Mayurbhanj), Lakhanpur (dist Jharsuguda), Lahunipara (dist Sundargarh), Reamal (dist Deogarh), Jamankira (dist Sambalpur), Tangarpali (dist Sundargarh) 6 Each; **Bihar:** Tribeni/Balmikinagar (dist West Champaran), Piro (dist Bhojpur) 14 Each; Chhapokhira (dist Bhojpur), Rohtas (dist Rohtas) 8 Each; Garhani (dist Bhojpur), Belaganj (dist Gaya) 7 Each; Rafiganj (dist Aurangabad), Arwal (dist Arwal), Agiaon (dist Bhojpur), Siwan Sadar (dist Siwan) 6 Each; **Sub Himalayan West Bengal & Sikkim:** Damdim Tea Estate (dist Jalpaiguri) 13; Kumargram (dist Alipurduar) 10; Raidak Tea Estate (dist Alipurduar), Sankos Tea Estate (dist Alipurduar) 9 Each; Maynaguri College (dist Jalpaiguri), Newlands Tea Garden (dist Alipurduar), Toorsa Tea Garden (dist Alipurduar) 8 Each; Namthang (dist Namchi), Gairkata Tea Estate (dist Jalpaiguri) 6 Each; **West Rajasthan:** Desuri (dist Pali), Erinpura/Jawai Dam (dist Pali) 10 Each; Jalore (dist Jalore) 9; Sojat (dist Pali) 8; Ahore SR (dist Jalore) 7; Sumerpur SR (dist Pali) 6; **Gujarat Region:** Pardi (dist Valsad) 9; Dharampur (dist Valsad) 7; **Chhattisgarh:** Tamnar (dist Raigarh) 9; Gharghoda (dist Raigarh), Pusaur (dist Raigarh), Naya Baradwar (dist Sakti), Chhal (dist Raigarh) 6 Each; **East Uttar Pradesh:** Jaunpur CWC (dist Jaunpur) 8; Trimohani Ghat Fmo (dist Maharajganj), Nighasan (dist Kheri), Maharajganj (dist Maharajganj) 7 Each; Uska Bazar Fmo (dist Siddharth Nagar), Naugarh (dist Siddharth Nagar) 6 Each; **Nagaland, Manipur, Mizoram & Tripura:** Tseminyu Nsdma AWS (dist Kohima) 7; **Tamil Nadu, Puducherry & Karaikal:** Anna Uty ARG (dist Chennai) 6.

*Red color warning does not mean "Red Alert" Red color warning means "Take Action"

Forecast and warning for any day is valid from 0830 hours IST of day till 0830 hours IST of next day

For more details kindly visit <https://mausam.imd.gov.in> or contact 011-2434-4599

(Service to the nation since 1875)

❖ **Heavy Rainfall observed** (from 0830 hours IST of yesterday to 0830 hours IST of today): **Extremely heavy rain** at isolated places over East Rajasthan. **Heavy to very heavy rain** at isolated places over Assam & Meghalaya, Sub Himalayan West Bengal & Sikkim, Gangetic West Bengal, Odisha, Jharkhand, Bihar, East Rajasthan and West Madhya Pradesh. **Heavy rain** at isolated places over Nagaland, Manipur, Mizoram & Tripura, East Uttar Pradesh, West Rajasthan, Gujarat Region and Chhattisgarh.

❖ **Minimum Temperature Departures (as on 22-08-2025): markedly above normal(> 5.1°C)** at few places over East Madhya Pradesh; at isolated places over Assam & Meghalaya, Bihar, East Uttar Pradesh, West Uttar Pradesh, Himachal Pradesh, Jammu-KashmirLadakh-Gilgit-Baltistan-Muzaffarabad, West Rajasthan and West Madhya Pradesh. **appreciably above normal(3.1°C to 5.0°C)** at isolated places over Odisha, Gujarat Region and Saurashtra & Kutch. **above normal(1.6°C to 3.0°C)** at few places over Haryana-Chandigarh-Delhi, Punjab, Coastal Andhra Pradesh & Yanam, Kerala & Mahe and Lakshadweep; at isolated places over Sub Himalayan West Bengal & Sikkim, East Rajasthan, Konkan & Goa, Madhya Maharashtra, Chhattisgarh, Telangana, Rayalaseema, Tamil Nadu, Puducherry & Karaikal and South Interior Karnataka. **near normal(-1.5°C to 1.5°C)** at many places over Uttarakhand; at most places over Andaman & Nicobar Islands, Nagaland, Manipur, Mizoram & Tripura, Gangetic West Bengal, Jharkhand, Marathwada, Vidarbha, Coastal Karnataka and North Interior Karnataka. **The lowest minimum temperature** of 18.0°C is reported at KHANDWA (MADHYA PRADESH) over the Plains of India.

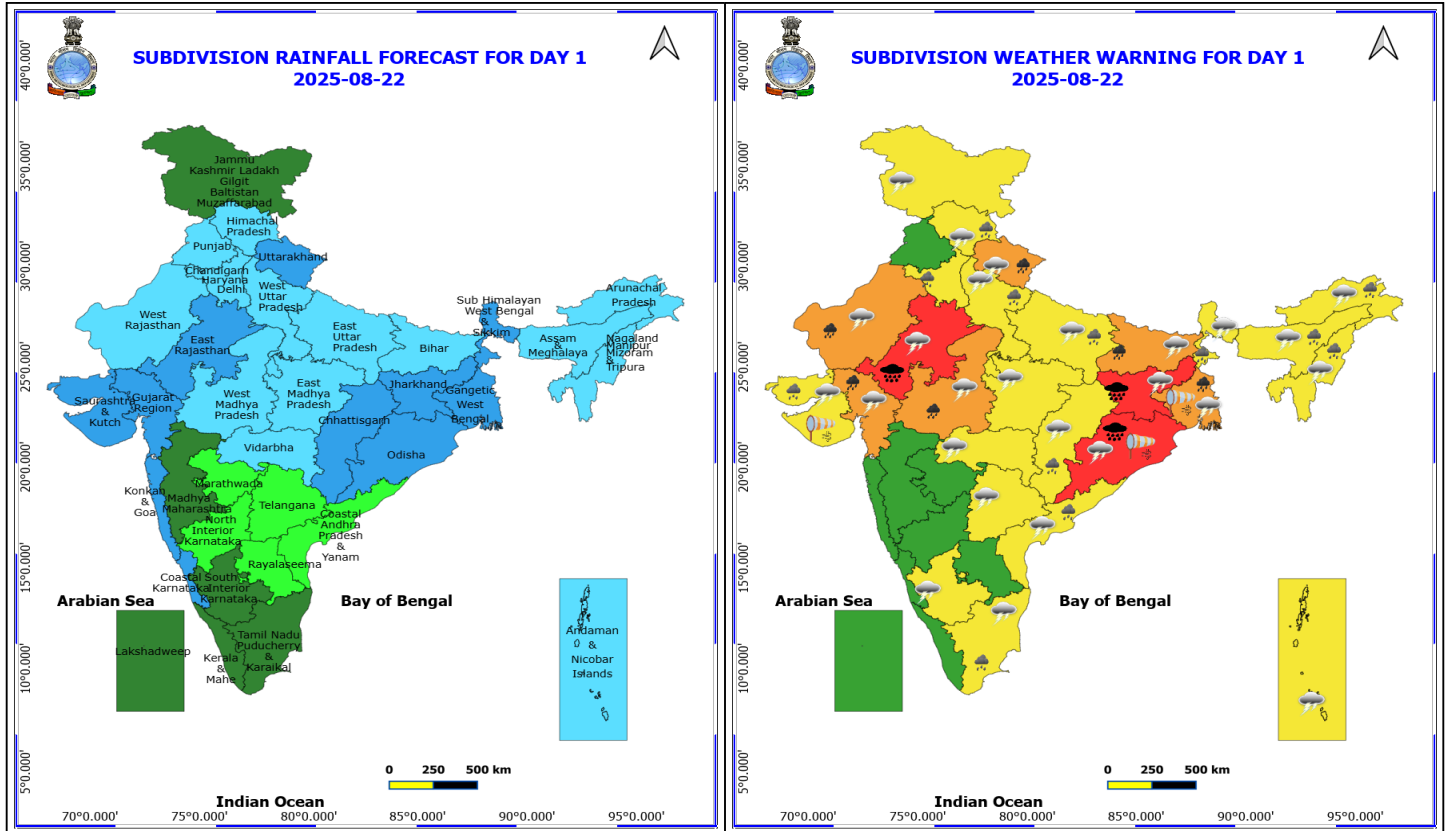
❖ **Maximum Temperature Departures (as on 21-08-2025): appreciably above normal(3.1°C to 5.0°C)** at isolated places over Uttarakhand, Jammu-KashmirLadakh-Gilgit-Baltistan-Muzaffarabad, Vidarbha, Chhattisgarh, Coastal Andhra Pradesh & Yanam, Tamil Nadu, Puducherry & Karaikal and Kerala & Mahe. **above normal(1.6°C to 3.0°C)** at many places over Himachal Pradesh; at few places over West Uttar Pradesh, West Rajasthan, East Madhya Pradesh, Telangana and Lakshadweep; at isolated places over Assam & Meghalaya, Nagaland, Manipur, Mizoram & Tripura, Sub Himalayan West Bengal & Sikkim, East Uttar Pradesh, Haryana-Chandigarh-Delhi, Punjab, East Rajasthan and West Madhya Pradesh. **near normal(-1.5°C to 1.5°C)** at many places over Andaman & Nicobar Islands, Saurashtra & Kutch and South Interior Karnataka; at most places over Odisha, Jharkhand, Bihar, Gujarat Region, Konkan & Goa, Madhya Maharashtra, Marathwada, Rayalaseema and Coastal Karnataka; at few places over Arunachal Pradesh, Gangetic West Bengal and North Interior Karnataka. **The highest maximum temperature** of 39.5°C is reported at MADURAI (A) (TAMIL NADU).

Meteorological Analysis (Based on 0830 hours IST)

- The **monsoon trough** now passes through Suratgarh, Rohtak, Fatehgarh, Gaya, Digha and thence east southeastwards to northeast Bay of Bengal.
- The **upper air cyclonic circulation** over Gangetic West Bengal and adjoining Bangladesh extending upto 7.6 km above mean sea level tilting southwestwards with height persists.
- The **upper air cyclonic circulation** over southwest Uttar Pradesh & neighbourhood extending upto 7.6 km above mean sea level tilting southwestwards with height persists.
- The **upper air cyclonic circulation** over West Rajasthan & neighbourhood at 0.9 km above mean sea level persists.
- A fresh **low-pressure area** is likely to form over northwest Bay of Bengal off Odisha-West Bengal coasts around 25th August 2025.
- The **Western Disturbance** as a trough in the lower tropospheric westerlies with its axis at 3.1 km above mean sea level roughly along Long. 78°E to the north of Lat. 32°N has moved away in east northeastwards.
- The **off shore trough** at mean sea level along Gujarat -Maharashtra coasts has become less marked.
- The **upper air cyclonic circulation** over Kutch & neighbourhood at 5.8 km above mean sea level has become less marked.
- The **east-west trough** from the upper air cyclonic circulation over Gangetic West Bengal and adjoining Bangladesh to East Rajasthan across Jharkhand, north Chhattisgarh & the upper air cyclonic circulation over southwest Uttar Pradesh at 5.8 km above mean sea level has become less marked.

Weather Outlook for subsequent 3 days

- Scattered to Fairly widespread rainfall likely over northern, western India, western peninsular and eastern India.



22 August (Day 1)

- ❖ **Heavy to Very Heavy Rainfall with isolated Extremely Heavy Rainfall** very likely at isolated places over East Rajasthan, Jharkhand and Odisha.
- ❖ **Heavy to Very Heavy Rainfall** very likely at isolated places over Bihar, Gangetic West Bengal, Gujarat Region, Uttarakhand, West Madhya Pradesh and West Rajasthan.
- ❖ **Heavy Rainfall** very likely at isolated places over Arunachal Pradesh, Assam & Meghalaya, Chhattisgarh, Coastal Andhra Pradesh, Haryana, Chandigarh & Delhi, Himachal Pradesh, Nagaland, Manipur, Mizoram and Tripura, Saurashtra & Kutch, Sub Himalayan West Bengal & Sikkim, Tamil Nadu Puducherry & Karaikal and Uttar Pradesh.
- ❖ **Thunderstorm accompanied with lightning & gusty winds(30-40kmph)** very likely at isolated places over Andaman & Nicobar Islands, Bihar, Jammu-Kashmir-Ladakh-Gilgit-Baltistan-Muzaffarabad, Jharkhand, Odisha, South Interior Karnataka, Telangana and West Bengal & Sikkim.
- ❖ **Thunderstorm accompanied with Lightning** very likely at isolated places over Arunachal Pradesh, Assam & Meghalaya, Chhattisgarh, Coastal Andhra Pradesh, Gujarat State, Himachal Pradesh, Madhya Pradesh, Nagaland, Manipur, Mizoram and Tripura, Rajasthan, Tamil Nadu Puducherry & Karaikal, Uttar Pradesh, Uttarakhand and Vidarbha.
- ❖ **Strong Surface Winds** very likely at isolated places over Gangetic West Bengal, Odisha and Saurashtra & Kutch.
- ❖ **Squally wind with speed reaching 45 kmph to 55 kmph gusting to 65 kmph** is likely to prevail along and off Somalia, Oman coasts, most parts of westcentral Arabian sea, adjoining & some parts of southwest eastcentral Arabian Sea.
- ❖ **Squally weather with wind speed reaching 40 - 50 kmph gusting to 60 kmph** likely to prevail along and off

*Red color warning does not mean "Red Alert" Red color warning means "Take Action"

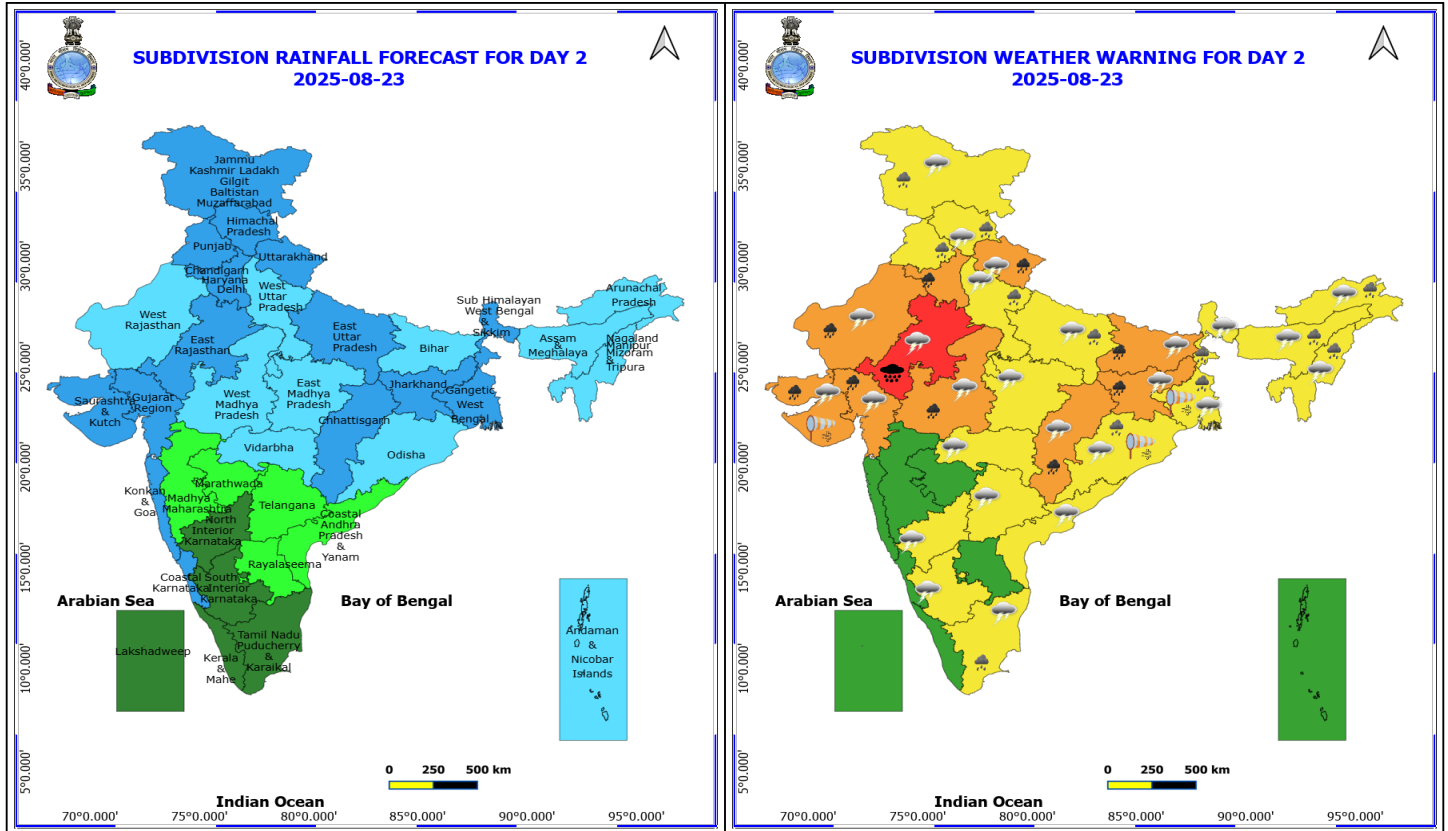
Forecast and warning for any day is valid from 0830 hours IST of day till 0830 hours IST of next day

For more details kindly visit <https://mausam.imd.gov.in> or contact 011-2434-4599

(Service to the nation since 1875)



South Gujarat, over most parts of eastcentral and northeast Arabian sea, along and off Odisha, West Bengal adjoining north Bay of Bengal.



23 August (Day 2)

- ❖ **Heavy to Very Heavy Rainfall with isolated Extremely Heavy Rainfall** very likely at isolated places over East Rajasthan.
- ❖ **Heavy to Very Heavy Rainfall** very likely at isolated places over Bihar, Chhattisgarh, Gujarat State, Haryana, Chandigarh & Delhi, Jharkhand, Uttarakhand, West Madhya Pradesh and West Rajasthan.
- ❖ **Heavy Rainfall** very likely at isolated places over Arunachal Pradesh, Assam & Meghalaya, Himachal Pradesh, Jammu-Kashmir-Ladakh-Gilgit-Baltistan-Muzaffarabad, Nagaland, Manipur, Mizoram and Tripura, Odisha, Punjab, Tamil Nadu Puducherry & Karaikal, Uttar Pradesh and West Bengal & Sikkim.
- ❖ **Thunderstorm accompanied with lightning & gusty winds(30-40kmph)** very likely at isolated places over Bihar, Interior Karnataka, Jammu-Kashmir-Ladakh-Gilgit-Baltistan-Muzaffarabad, Jharkhand, Odisha, Telangana and West Bengal & Sikkim.
- ❖ **Thunderstorm accompanied with Lightning** very likely at isolated places over Arunachal Pradesh, Assam & Meghalaya, Chhattisgarh, Coastal Andhra Pradesh, Gujarat State, Himachal Pradesh, Madhya Pradesh, Nagaland, Manipur, Mizoram and Tripura, Rajasthan, Tamil Nadu Puducherry & Karaikal, Uttar Pradesh, Uttarakhand and Vidarbha.
- ❖ **Strong Surface Winds** very likely at isolated places over Gangetic West Bengal, Odisha and Saurashtra & Kutch.
- ❖ **Squally wind with speed reaching 45 kmph to 55 kmph gusting to 65 kmph** is likely to prevail along and off Somalia, Oman coasts, most parts of westcentral Arabian sea, adjoining & some parts of southwest, eastcentral Arabian Sea.
- ❖ **Squally weather with wind speed reaching 40 - 50 kmph gusting to 60 kmph** likely to prevail along and off

*Red color warning does not mean "Red Alert" Red color warning means "Take Action"

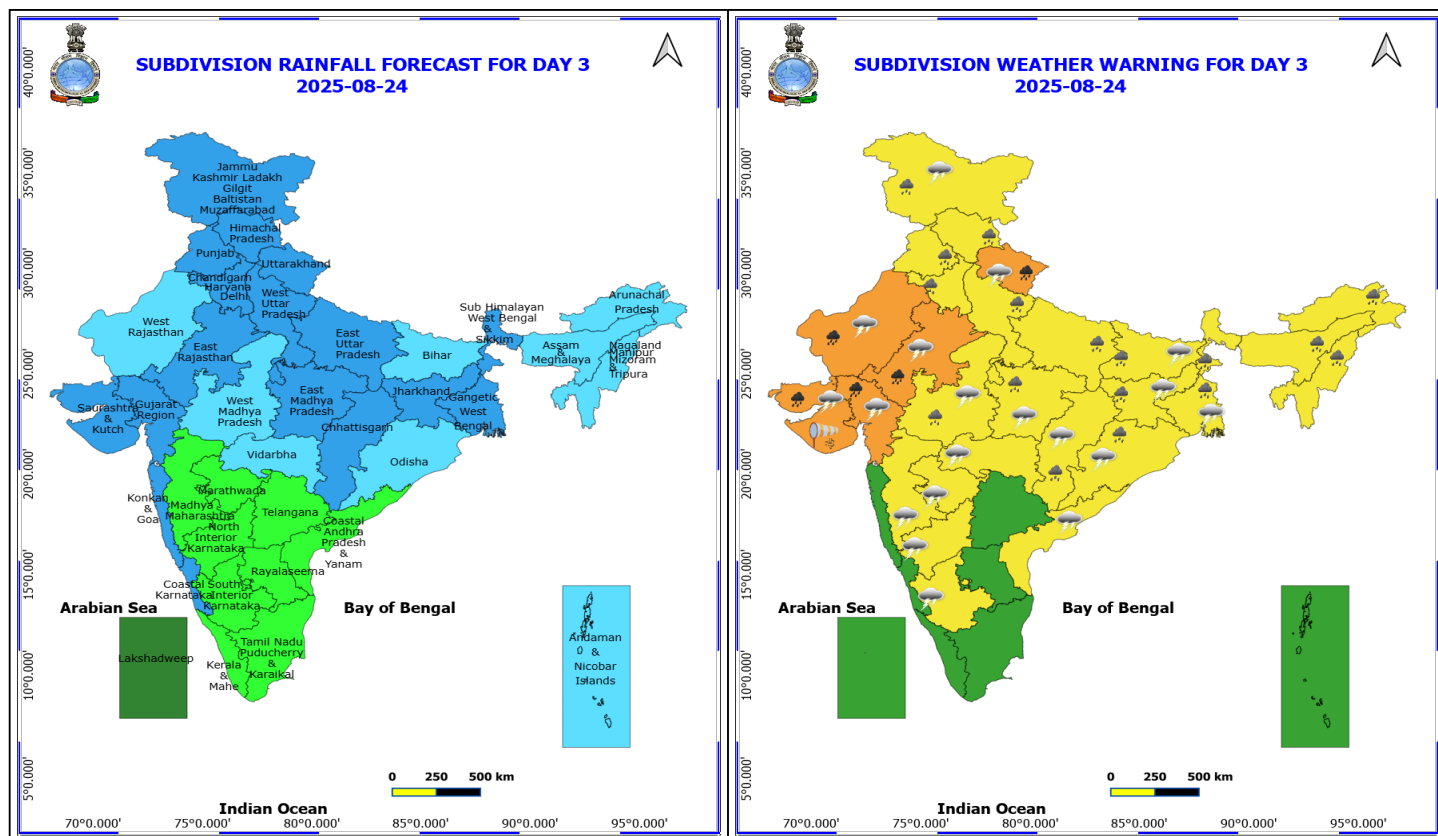
Forecast and warning for any day is valid from 0830 hours IST of day till 0830 hours IST of next day

For more details kindly visit <https://mausam.imd.gov.in> or contact 011-2434-4599

(Service to the nation since 1875)

south Gujarat coasts, northeast and adjoining sea areas, along and off Odisha, West Bengal adjoining north Bay of Bengal.

❖ **Squally weather with wind speed reaching 45 - 55 kmph gusting to 65 kmph** likely to prevail over some parts of eastcentral and northeast Arabian Sea, off south Gujarat coasts.



24 August (Day 3)

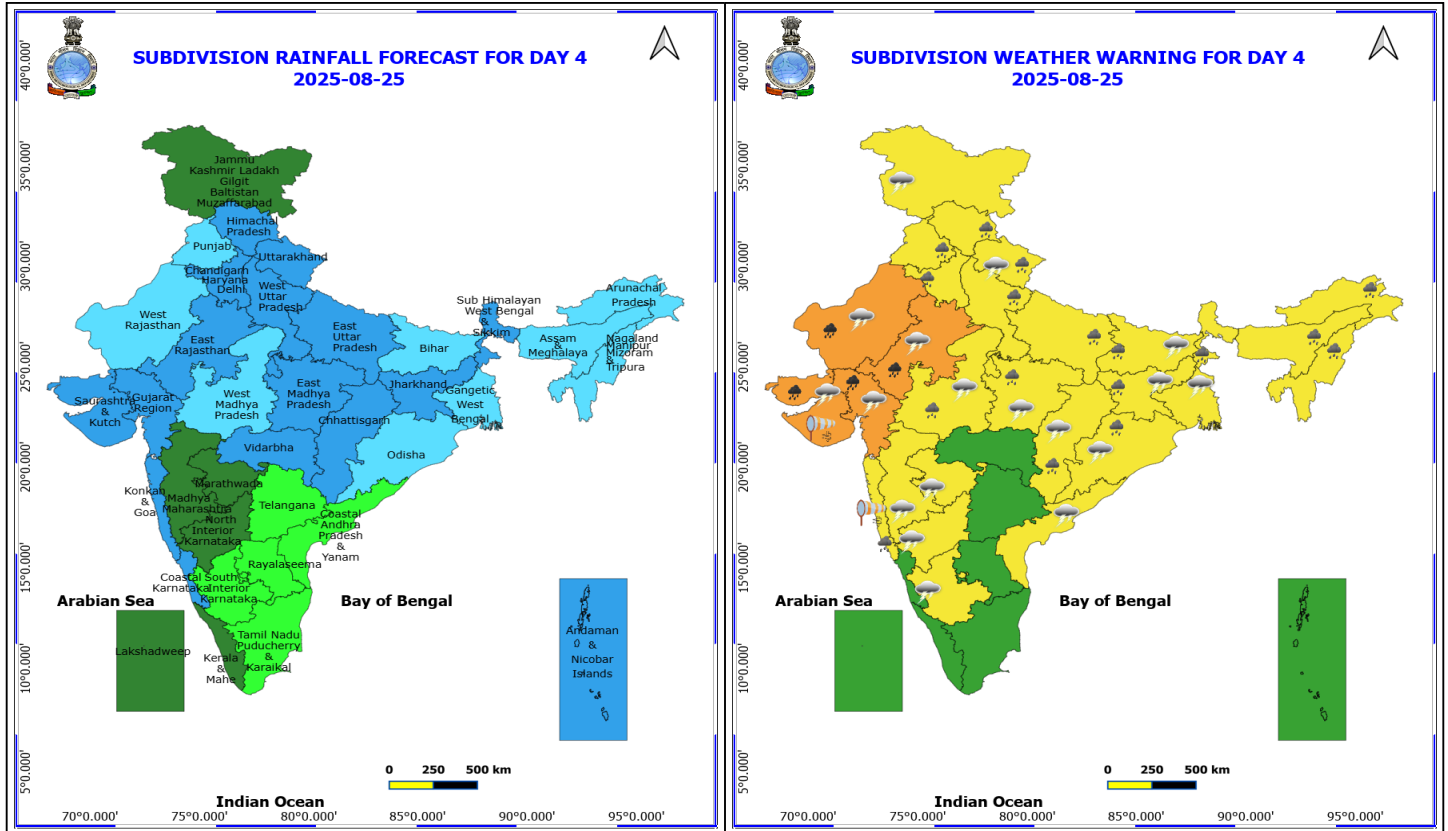
- ❖ **Heavy to Very Heavy Rainfall** very likely at isolated places over Gujarat State, Rajasthan and Uttarakhand.
- ❖ **Heavy Rainfall** very likely at isolated places over Arunachal Pradesh, Assam & Meghalaya, Bihar, Chhattisgarh, Haryana, Chandigarh & Delhi, Himachal Pradesh, Jammu-Kashmir-Ladakh-Gilgit-Baltistan-Muzaffarabad, Jharkhand, Madhya Pradesh, Nagaland, Manipur, Mizoram and Tripura, Odisha, Punjab, Uttar Pradesh and West Bengal & Sikkim.
- ❖ **Thunderstorm accompanied with lightning & gusty winds(30-40kmph)** very likely at isolated places over Bihar, Gangetic West Bengal, Interior Karnataka, Jammu-Kashmir-Ladakh-Gilgit-Baltistan-Muzaffarabad, Jharkhand and Odisha.
- ❖ **Thunderstorm accompanied with Lightning** very likely at isolated places over Chhattisgarh, Coastal Andhra Pradesh, Gujarat State, Madhya Pradesh, Maharashtra, Rajasthan and Uttarakhand.
- ❖ **Strong Surface Winds** very likely at isolated places over Saurashtra & Kutch.
- ❖ **Squally wind with speed reaching 45 kmph to 55 kmph gusting to 65 kmph** is likely to prevail along and off Somalia, Oman coasts, most parts of westcentral Arabian sea, adjoining southwest & eastcentral Arabian Sea.
- ❖ **Squally weather with wind speed reaching 40 - 50 kmph gusting to 60 kmph** likely to prevail along and off south Gujarat coasts, off north Maharashtra coasts, over some parts eastcentral and northeast Arabian Sea.

*Red color warning does not mean "Red Alert" Red color warning means "Take Action"

Forecast and warning for any day is valid from 0830 hours IST of day till 0830 hours IST of next day

For more details kindly visit <https://mausam.imd.gov.in> or contact 011-2434-4599

(Service to the nation since 1875)



25 August (Day 4)

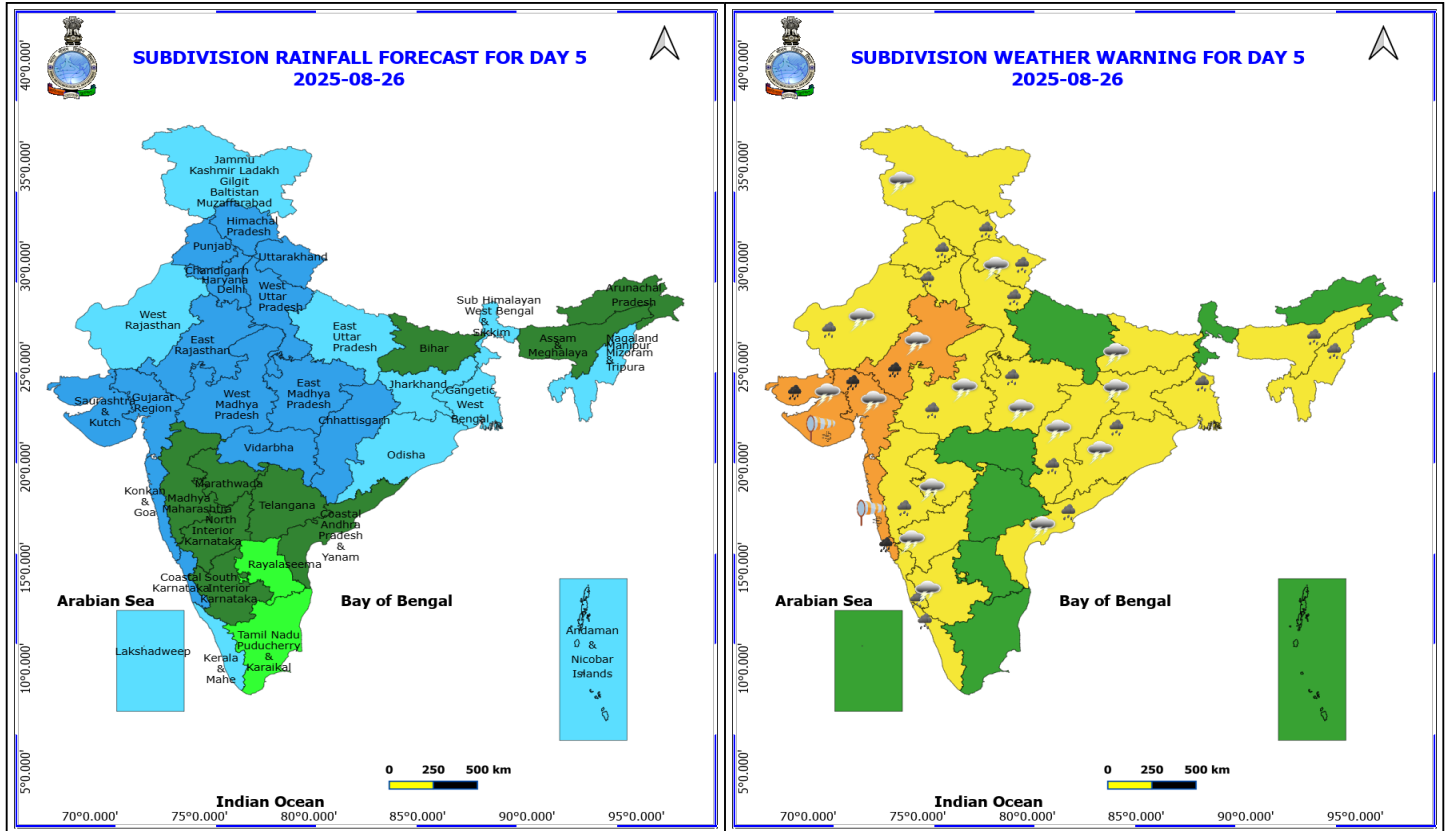
- ❖ **Heavy to Very Heavy Rainfall** likely at isolated places over Gujarat State and Rajasthan.
- ❖ **Heavy Rainfall** likely at isolated places over Arunachal Pradesh, Assam & Meghalaya, Bihar, Chhattisgarh, Haryana, Chandigarh & Delhi, Himachal Pradesh, Jharkhand, Konkan & Goa, Madhya Pradesh, Nagaland, Manipur, Mizoram and Tripura, Odisha, Punjab, Sub Himalayan West Bengal & Sikkim, Uttar Pradesh and Uttarakhand.
- ❖ **Thunderstorm accompanied with lightning & gusty winds(30-40kmph)** likely at isolated places over Bihar, Gangetic West Bengal, Interior Karnataka, Jammu-Kashmir-Ladakh-Gilgit-Baltistan-Muzaffarabad, Jharkhand and Odisha.
- ❖ **Thunderstorm accompanied with Lightning** likely at isolated places over Chhattisgarh, Coastal Andhra Pradesh, Gujarat State, Madhya Maharashtra, Madhya Pradesh, Marathwada, Rajasthan and Uttarakhand.
- ❖ **Strong Surface Winds** likely at isolated places over Konkan & Goa and Saurashtra & Kutch.
- ❖ **Squally wind with speed reaching 45 kmph to 55 kmph gusting to 65 kmph** is likely to prevail along and off Somalia, Oman coasts, most parts of westcentral Arabian sea, adjoining & some parts of southwest, northwest & eastcentral Arabian Sea.
- ❖ **Squally weather with wind speed reaching 40 - 50 kmph gusting to 60 kmph** likely to prevail over some parts of northeast Arabian Sea along and off Gujarat.
- ❖ **Squally weather with wind speed reaching 45 - 55 kmph gusting to 65 kmph** likely to prevail over some parts of eastcentral and northeast Arabian Sea.

*Red color warning does not mean "Red Alert" Red color warning means "Take Action"

Forecast and warning for any day is valid from 0830 hours IST of day till 0830 hours IST of next day

For more details kindly visit <https://mausam.imd.gov.in> or contact 011-2434-4599

(Service to the nation since 1875)



26 August (Day 5)

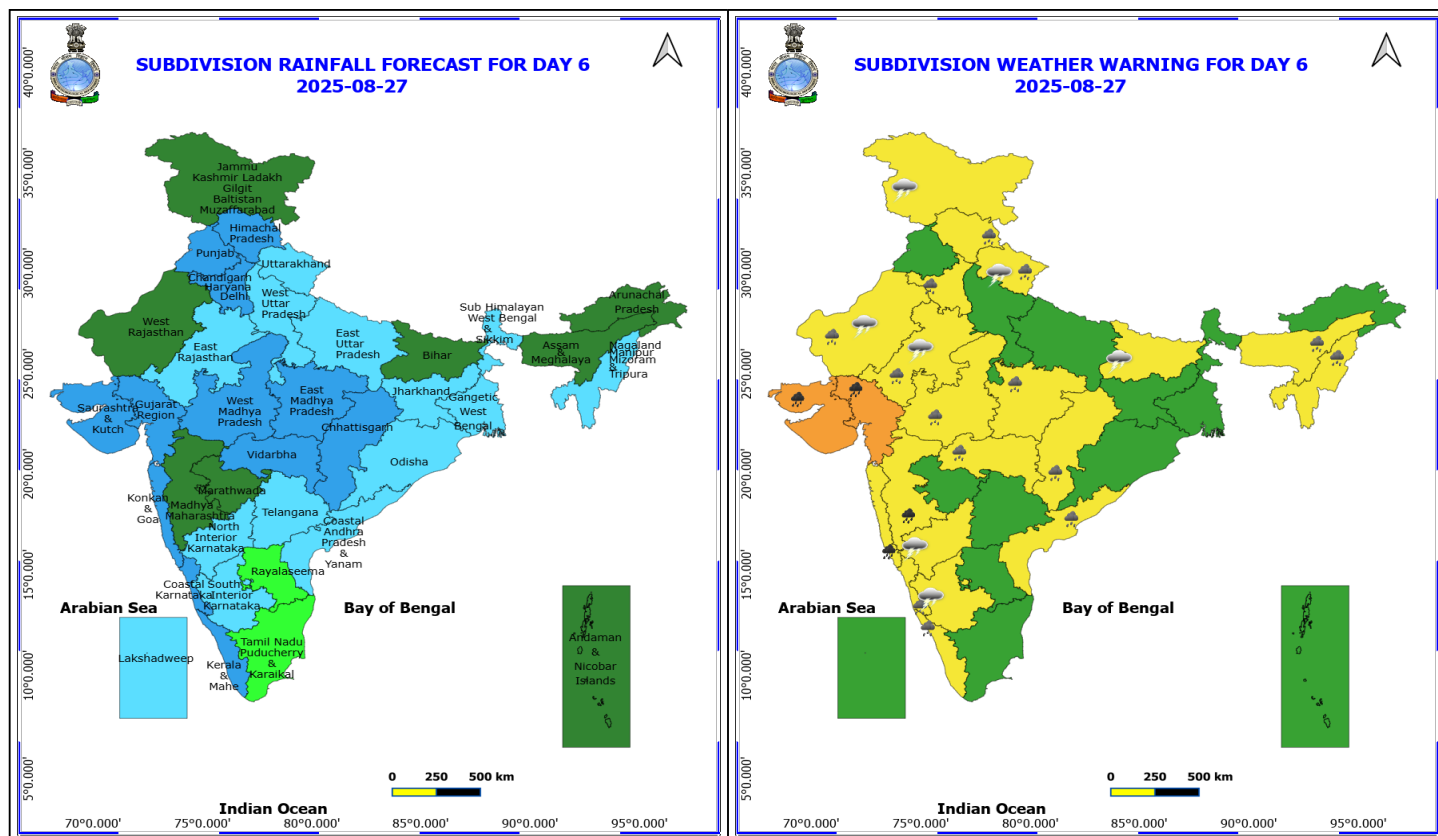
- ❖ **Heavy to Very Heavy Rainfall** likely at isolated places over East Rajasthan, Gujarat State and Konkan & Goa.
- ❖ **Heavy Rainfall** likely at isolated places over Assam & Meghalaya, Chhattisgarh, Coastal Andhra Pradesh, Coastal Karnataka, Gangetic West Bengal, Haryana, Chandigarh & Delhi, Himachal Pradesh, Kerala & Mahe, Madhya Maharashtra, Madhya Pradesh, Nagaland, Manipur, Mizoram and Tripura, Odisha, Punjab, Uttarakhand, West Rajasthan and West Uttar Pradesh.
- ❖ **Thunderstorm accompanied with lightning & gusty winds(30-40kmph)** likely at isolated places over Bihar, Interior Karnataka, Jammu-Kashmir-Ladakh-Gilgit-Baltistan-Muzaffarabad, Jharkhand and Odisha.
- ❖ **Thunderstorm accompanied with Lightning** likely at isolated places over Chhattisgarh, Coastal Andhra Pradesh, Gujarat State, Madhya Pradesh, Marathwada, Rajasthan and Uttarakhand.
- ❖ **Strong Surface Winds** likely at isolated places over Konkan & Goa and Saurashtra & Kutch.
- ❖ **Squally wind with speed reaching 45 kmph to 55 kmph gusting to 65 kmph** is likely to prevail along and off Somalia, Oman coasts, many parts of westcentral Arabian sea, adjoining & some parts of southwest Arabian Sea.
- ❖ **Squally weather with wind speed reaching 40 - 50 kmph gusting to 60 kmph** likely to prevail over some parts of northeast & eastcentral Arabian Sea, along and off south Gujarat, North Maharashtra, Goa, Karnataka, north Kerala.
- ❖ **Squally weather with wind speed reaching 45 - 55 kmph gusting to 65 kmph** likely to prevail over some parts of westcentral and northwest & adjoining eastcentral Arabian Sea.

***Red color warning does not mean "Red Alert" Red color warning means "Take Action"**

Forecast and warning for any day is valid from 0830 hours IST of day till 0830 hours IST of next day

For more details kindly visit <https://mausam.imd.gov.in> or contact 011-2434-4599

(Service to the nation since 1875)



27 August (Day 6)

- ❖ **Heavy to Very Heavy Rainfall** likely at isolated places over Gujarat State, Konkan & Goa and Madhya Maharashtra.
- ❖ **Heavy Rainfall** likely at isolated places over Assam & Meghalaya, Chhattisgarh, Coastal Andhra Pradesh, Coastal Karnataka, Haryana, Chandigarh & Delhi, Himachal Pradesh, Kerala & Mahe, Madhya Pradesh, Nagaland, Manipur, Mizoram and Tripura, Rajasthan, Uttarakhand and Vidarbha.
- ❖ **Thunderstorm accompanied with lightning & gusty winds(30-40kmph)** likely at isolated places over Bihar, Interior Karnataka and Jammu-Kashmir-Ladakh-Gilgit-Baltistan-Muzaffarabad.
- ❖ **Thunderstorm accompanied with Lightning** likely at isolated places over Rajasthan and Uttarakhand.

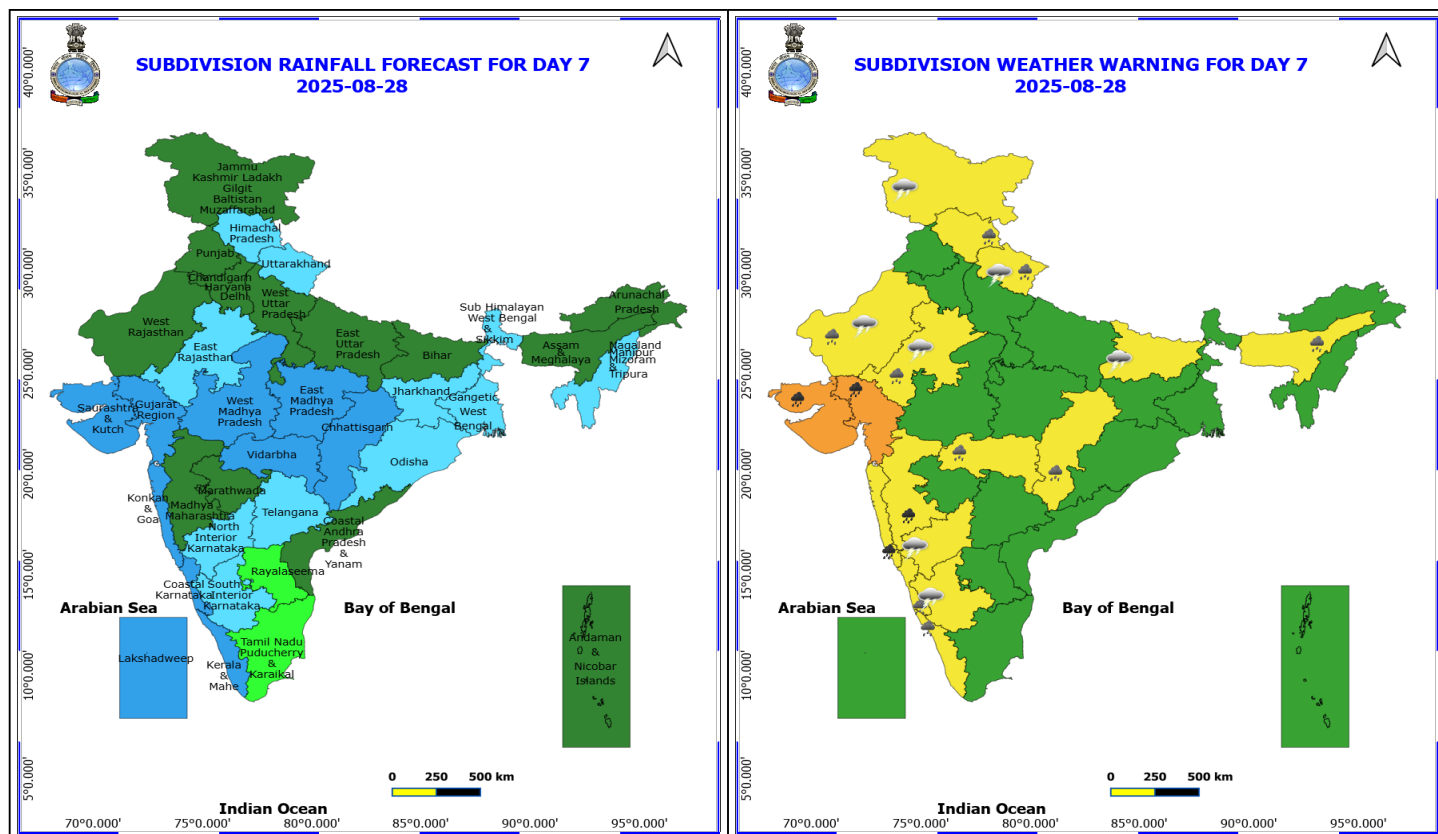
No Fishermen Warning

***Red color warning does not mean "Red Alert" Red color warning means "Take Action"**

Forecast and warning for any day is valid from 0830 hours IST of day till 0830 hours IST of next day

For more details kindly visit <https://mausam.imd.gov.in> or contact 011-2434-4599

(Service to the nation since 1875)



28 August (Day 7)

- ❖ **Heavy to Very Heavy Rainfall** likely at isolated places over Gujarat State, Konkan & Goa and Madhya Maharashtra.
- ❖ **Heavy Rainfall** likely at isolated places over Assam & Meghalaya, Chhattisgarh, Coastal Karnataka, Himachal Pradesh, Kerala & Mahe, Rajasthan, Uttarakhand and Vidarbha.
- ❖ **Thunderstorm accompanied with lightning & gusty winds(30-40kmph)** likely at isolated places over Bihar, Interior Karnataka and Jammu-Kashmir-Ladakh-Gilgit-Baltistan-Muzaffarabad.
- ❖ **Thunderstorm accompanied with Lightning** likely at isolated places over Rajasthan and Uttarakhand.

No Fishermen Warning

***Red color warning does not mean "Red Alert" Red color warning means "Take Action"**

Forecast and warning for any day is valid from 0830 hours IST of day till 0830 hours IST of next day

For more details kindly visit <https://mausam.imd.gov.in> or contact 011-2434-4599

(Service to the nation since 1875)

Flash Flood Warnings

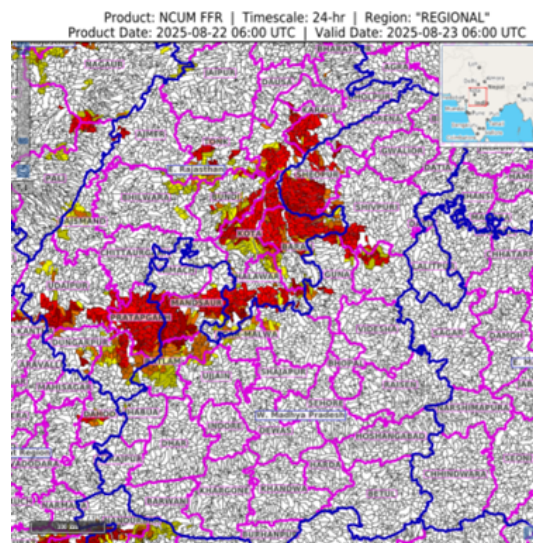
24 hours Outlook for the Flash Flood Risk (FFR) till 1130 IST of 23-08-2025 :

Moderate to High flash flood risk likely over few watersheds & neighbourhoods of following Met Sub-divisions during next 24 hours.

East Rajasthan – Baran, Bundi, Banswara, Jhalawar , Pratapgarh, Udaipur, Dungarpur, Swaimadhopur, Tonk, and Kota districts.

West Madhya Pradesh – Sheopur, Shivpuri, Guna, Mandsaur, Ratlam, an Agar Malwa districts

Surface runoff/ Inundation may occur at some fully saturated soils & low-lying areas over Area of Concern (AoC) as shown in map due to expected rainfall occurrence in next 24 hours.



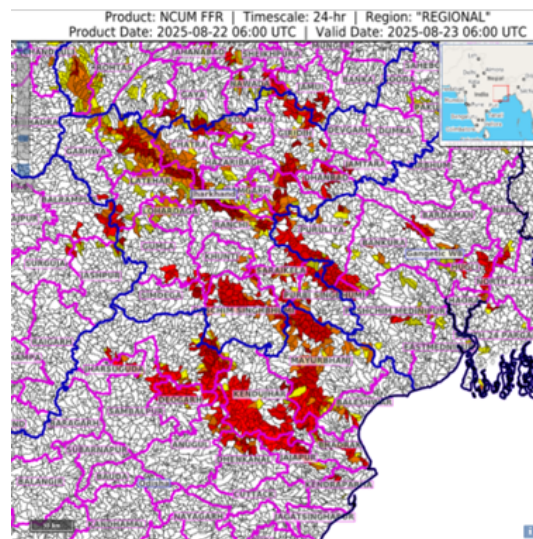
24 hours Outlook for the Flash Flood Risk (FFR) till 1130 IST of 23-08-2025 :

Low to Moderate flash flood risk likely over few watersheds & neighbourhoods of following Met Sub-divisions during next 24 hours.

Odisha – Angul, Mayurbhanj, Kendraparha, Kendujhar, Deogarh, Dhenkanal, and Sundargarh districts.

Jharkhand - Bokaro, Chatra, Dhanbad, East Singhbhum, Gumla, Garwa, Hazaribagh, Khunti, Latehar, Lohardaga, Palamau, Ramgarh, Ranchi, Saraikela, Simdega, and West Singhbhum districts.

Surface runoff/ Inundation may occur at some fully saturated soils & low-lying areas over Area of Concern (AoC) as shown in map due to expected rainfall occurrence in next 24 hours.



***Red color warning does not mean "Red Alert" Red color warning means "Take Action"**

Forecast and warning for any day is valid from 0830 hours IST of day till 0830 hours IST of next day

For more details kindly visit <https://mausam.imd.gov.in> or contact 011-2434-4599

(Service to the nation since 1875)



Table-1

7 Days Rainfall Forecast

S.No.	Subdivision	22-Aug	23-Aug	24-Aug	25-Aug	26-Aug	27-Aug	28-Aug
		Day 1	Day 2	Day 3	Day 4	Day 5	Day 6	Day 7
1	ANDAMAN & NICOBAR ISLANDS	FWS	FWS	FWS	WS	FWS	SCT	SCT
2	ARUNACHAL PRADESH	FWS	FWS	FWS	FWS	SCT	SCT	SCT
3	ASSAM & MEHGHALAYA	FWS	FWS	FWS	FWS	SCT	SCT	SCT
4	N. M. M. & T.	FWS	FWS	FWS	FWS	FWS	FWS	FWS
5	S.H. WEST BENGAL & SIKKIM	WS	WS	WS	WS	FWS	FWS	FWS
6	GANGETIC WEST BENGAL	WS	WS	WS	FWS	FWS	FWS	FWS
7	ODISHA	WS	FWS	FWS	FWS	FWS	FWS	FWS
8	JHARKHAND	WS	WS	WS	WS	FWS	FWS	FWS
9	BIHAR	FWS	FWS	FWS	FWS	SCT	SCT	SCT
10	EAST UTTAR PRADESH	FWS	WS	WS	WS	FWS	FWS	SCT
11	WEST UTTAR PRADESH	FWS	FWS	WS	WS	WS	FWS	SCT
12	UTTARAKHAND	WS	WS	WS	WS	WS	FWS	FWS
13	HARYANA, CHD & DELHI	FWS	WS	WS	WS	WS	WS	SCT
14	PUNJAB	FWS	WS	WS	FWS	WS	WS	SCT
15	HIMACHAL PRADESH	FWS	WS	WS	WS	WS	WS	FWS
16	JAMMU AND KASHMIR AND LADAKH	FWS	WS	WS	FWS	WS	SCT	ISOL
17	WEST RAJASTHAN	FWS	FWS	FWS	FWS	FWS	SCT	SCT
18	EAST RAJASTHAN	WS	WS	WS	WS	WS	FWS	FWS
19	WEST MADHYA PRADESH	FWS	FWS	FWS	FWS	WS	WS	WS
20	EAST MADHYA PRADESH	FWS	FWS	WS	WS	WS	WS	WS
21	GUJRAT REGION	WS	WS	WS	WS	WS	WS	WS
22	SAURASHTRA & KUTCH	WS	WS	WS	WS	WS	WS	WS
23	KONKAN & GOA	WS	WS	WS	WS	WS	WS	WS
24	MADHYA MAHARASHTRA	SCT	ISOL	ISOL	ISOL	SCT	SCT	SCT
25	MARATHWADA	ISOL	ISOL	ISOL	ISOL	SCT	SCT	SCT
26	VIDARBHA	FWS	FWS	FWS	WS	WS	WS	WS
27	CHATTISGARH	WS	WS	WS	WS	WS	WS	WS
28	COASTAL ANDHRA PRADESH	ISOL	ISOL	ISOL	ISOL	SCT	FWS	SCT
29	TELANGANA	ISOL	ISOL	ISOL	ISOL	SCT	FWS	FWS
30	RAYALASEEMA	ISOL	ISOL	ISOL	ISOL	ISOL	ISOL	ISOL
31	TAMILNADU & PUDUCHERRY	SCT	SCT	ISOL	ISOL	ISOL	ISOL	ISOL
32	COSTAL KARNATAKA	WS	WS	WS	WS	WS	WS	WS
33	NORTH INTERIOR KARNATAKA	ISOL	SCT	ISOL	SCT	SCT	FWS	FWS
34	SOUTH INTERIOR KARNATAKA	SCT	SCT	ISOL	ISOL	SCT	FWS	FWS
35	KERALA	SCT	SCT	ISOL	SCT	FWS	WS	WS
36	LAKSHDWEEP	SCT	SCT	SCT	SCT	FWS	FWS	WS

Legend	Category	%Stations
WS	Widespread/Most Places	76-100
FWS	Fairly Widespread/Many Places	51-75
SCT	Scattered/ A Few Places	26-50
ISOL	Isolated Places	1-25
DRY	No Rain	0

*Red color warning does not mean "Red Alert" Red color warning means "Take Action"

Forecast and warning for any day is valid from 0830 hours IST of day till 0830 hours IST of next day

For more details kindly visit <https://mausam.imd.gov.in> or contact 011-2434-4599

(Service to the nation since 1875)

Fig. 1: Maximum Temperatures Dated 2025-08-22

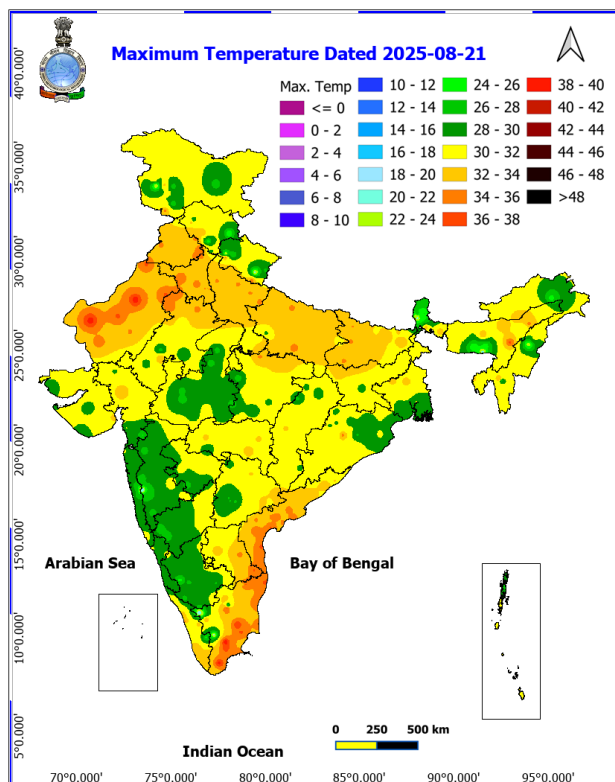


Fig. 2: Departure of Maximum Temp. Dated 2025-08-22

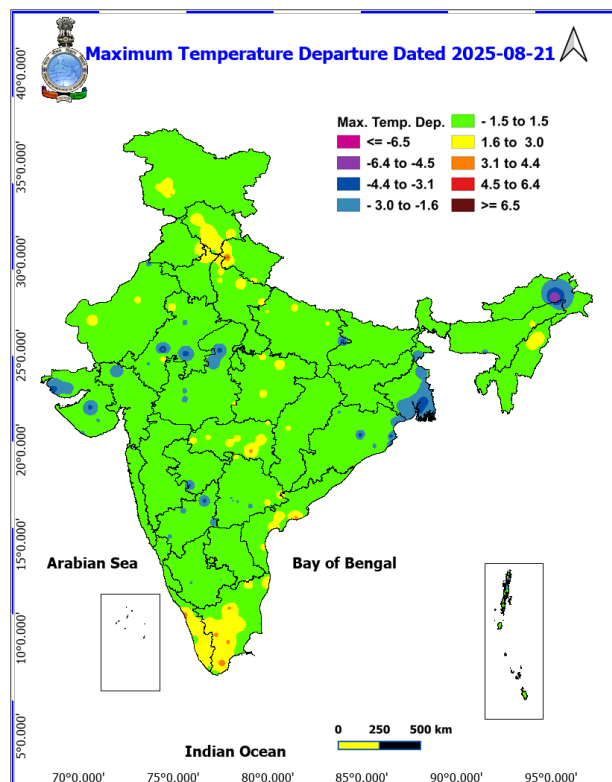


Fig. 3: Minimum Temperatures Dated 2025-08-22

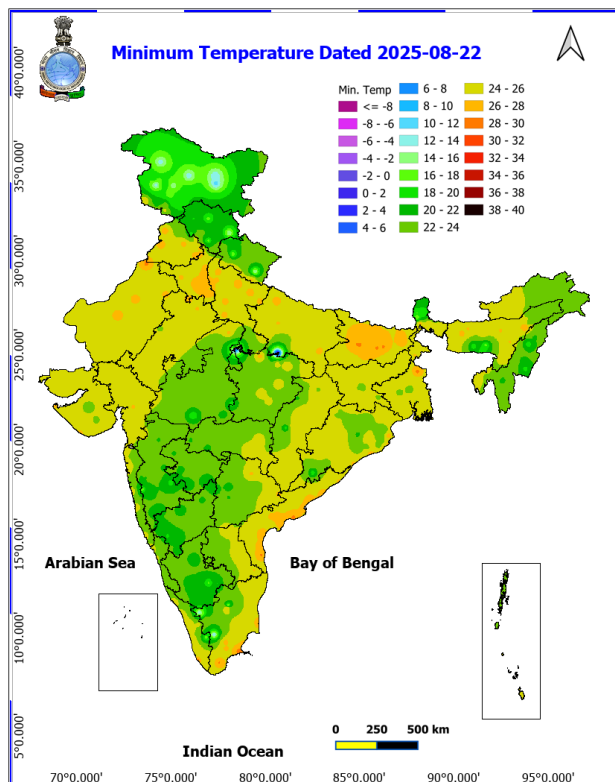
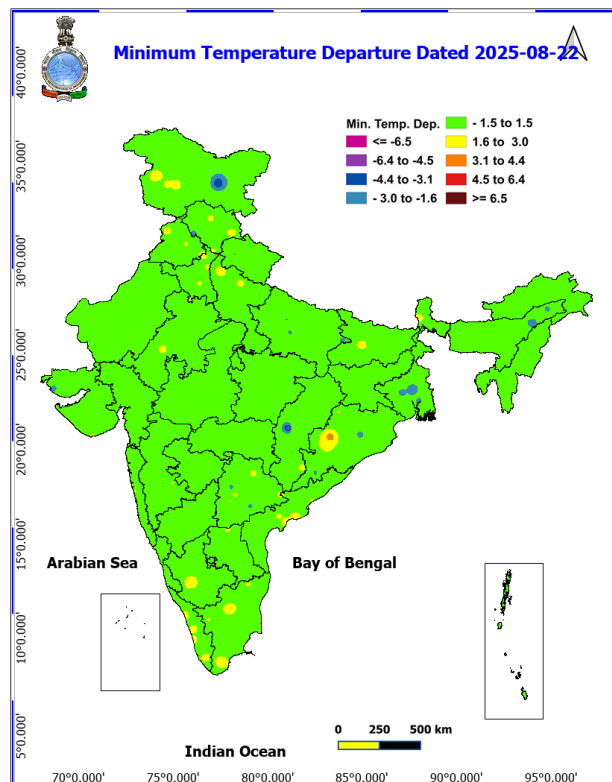
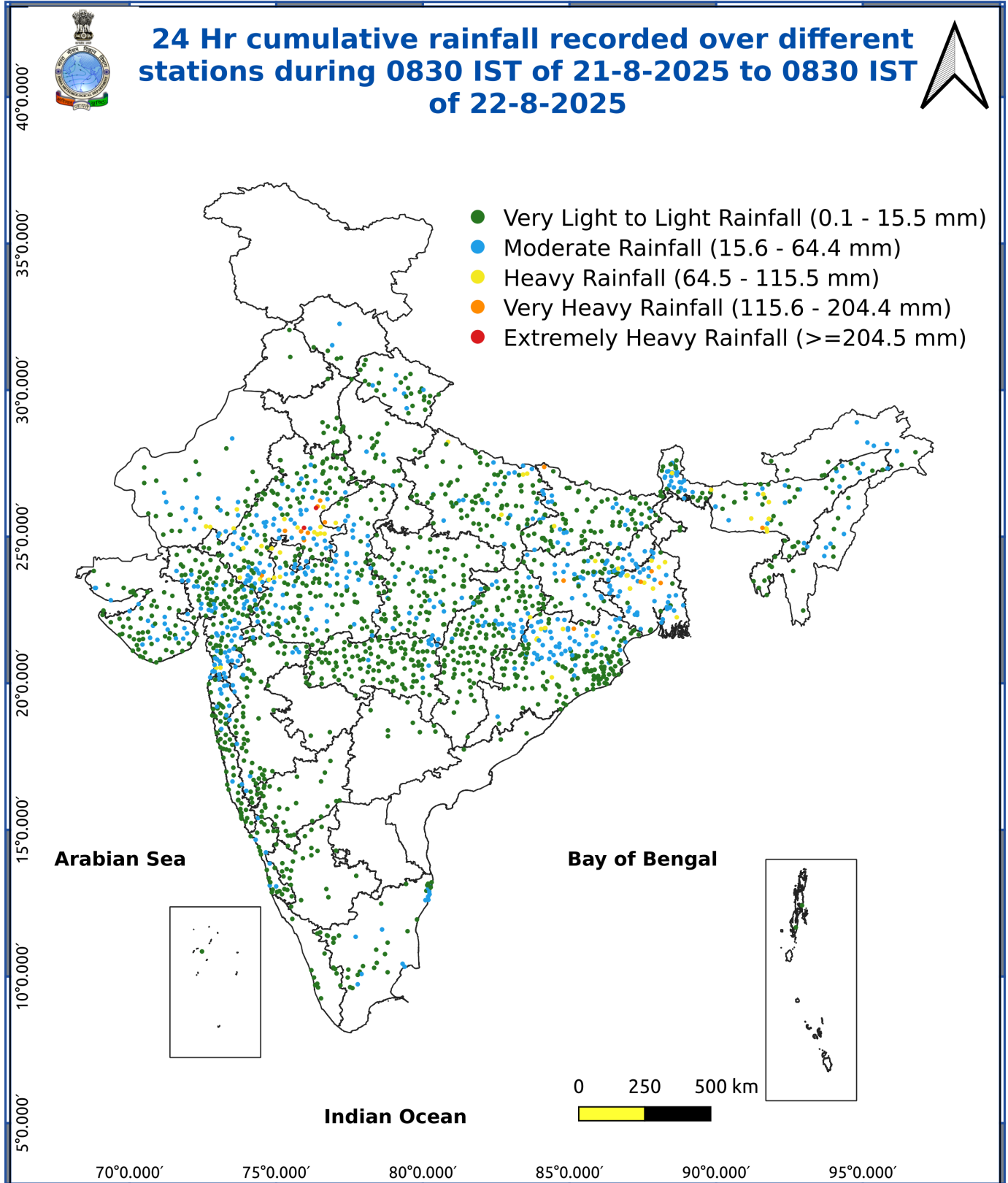


Fig. 4: Departure of Minimum Temp. Dated 2025-08-22





*Red color warning does not mean "Red Alert" Red color warning means "Take Action"

Forecast and warning for any day is valid from 0830 hours IST of day till 0830 hours IST of next day

For more details kindly visit <https://mausam.imd.gov.in> or contact 011-2434-4599

(Service to the nation since 1875)

Impact & Action Suggested due to

- **Extremely heavy rainfall** very likely over Jharkhand and Odisha on 22nd August East Rajasthan on 22nd & 23rd August
- **Isolated very heavy rainfall over** Gujarat state during 22nd-28th; West Madhya Pradesh, Bihar on 22nd & 23rd; Gangetic West Bengal on 22nd, Jharkhand, Chhattisgarh, Haryana on 23rd; East Rajasthan during 24th-26th; Uttarakhand during 22nd-24th; West Rajasthan during 22nd-25th; Konkan & Goa during 26th-28th and ghat areas of Madhya Maharashtra on 27th & 28th August.

Impact Expected

- Localized Flooding of roads, water logging in low lying areas and closure of underpasses mainly in urban areas of the above region.
- Occasional reduction in visibility due to heavy rainfall.
- Disruption of traffic in major cities due to water logging in roads leading to increased travel time.
- Minor damage to kutcha roads.
- Possibilities of damage to vulnerable structure.
- Localized Landslides/Mudslides/landslips/mudslips/landsinks/mudsinks.
- Damage to horticulture and standing crops in some areas due to inundation.
- It may lead to riverine flooding in some river catchments (for riverine flooding please visit Web page of CWC)

Action Suggested

- Check for traffic congestion on your route before leaving for your destination.
- Follow any traffic advisories that are issued in this regard.
- Avoid going to areas that face the water logging problems often.
- Avoid staying in vulnerable structure.

Agromet advisories for various parts of the country

Agromet advisories for likely impact of Heavy / Heavy to Very Heavy / Extremely Heavy Rainfall

- In **Sub-Himalayan West Bengal**, make provision to drain out excess water from *aman* rice and vegetable fields (chilli, bitter gourd, pointed gourd, okra, brinjal etc.) and cover the chilli seedlings with plastic to protect them from heavy rains in **Terai Zone**. In **Gangetic West Bengal**, ensure proper drainage in fields of rice and groundnut in **Laterite and Red Soil Zone**; rice and vegetables in **New Alluvial Zone** and vegetable beds, standing vegetable crops and betel gardens in **Coastal Saline Zone**.
- In **Odisha**, make provision for draining out excess rain water from fields of green gram, black gram, sugarcane, vegetables and fruit orchards in **East and South Eastern Coastal Plain Zone**; rice, maize, black gram and vegetables in **North Central Plateau Zone**; rice, vegetables and fruit orchards in **North Eastern Coastal Plain Zone**; rice, maize and vegetables in **West Central Table Land Zone** and rice, groundnut and vegetables in **North Eastern Plateau Zone**.
- In **Bihar**, ensure proper drainage from standing crops such as pigeon pea, turmeric, yam, sunflower and maize as well as from vegetable nurseries in **South Bihar Alluvial Zone**.
- In **Jharkhand**, ensure adequate drainage facilities in fields of rice, maize, black gram, green gram, tuber crops and vegetables in **Western Plateau Zone**.
- In **Madhya Pradesh**, provide adequate drainage in fields of soybean, maize and vegetables in **Malwa Plateau Zone**; soybean, black gram, maize, cotton and vegetables in **Jhabua Hills Zone**; rice, soybean, maize and vegetables in **Kymore Plateau and Satpura Hill Zone** and rice, maize, soybean, green gram, pigeon pea and vegetables in **Gird Zone**.
- In **Gujarat**, provide mechanical support to horticultural crops and staking or support to vegetables and young fruit plants to avoid lodging due to heavy rains and strong winds. Make arrangements to drain out excess water from fields of rice, sugarcane, vegetables and tuber crops in **South Gujarat Heavy Rainfall Zone**; rice, cotton,

*Red color warning does not mean "Red Alert" Red color warning means "Take Action"

Forecast and warning for any day is valid from 0830 hours IST of day till 0830 hours IST of next day

For more details kindly visit <https://mausam.imd.gov.in> or contact 011-2434-4599

(Service to the nation since 1875)

sugarcane and pigeon pea in **South Gujarat Zone**; groundnut, cotton, soybean, black gram, green gram, sesame and pigeon pea in **South Saurashtra Zone**; groundnut, cotton, sesame, black gram and green gram in **North Saurashtra Zone**; rice, cotton, green gram, black gram, pigeon pea, pearl millet and vegetables in **Bhal and Coastal Zone**; rice, pearl millet, pigeon pea and cotton in **Middle Gujarat Zone** and castor, cotton, groundnut, pearl millet and sesame in **North Gujarat Zone** and **North West Zone**.

- In **East Rajasthan**, make arrangements to drain out excess water from fields of pearl millet, sesame, black gram and vegetables in **Flood Prone Eastern Plain Zone**; groundnut, green gram, moth bean, cowpea and pearl millet in **Semi-Arid Eastern Plain Zone**; rice, maize, soybean, black gram and groundnut in **Southeastern Humid Plain Zone**; maize, green gram and soybean in **Sub Humid Southern Plain and Aravali Hill Zone** and soybean, maize, cotton and rice in **Southern Humid Plain Zone**. In **West Rajasthan**, make provision to drain out excess water from fields of sesame, moth bean, pearl millet, green gram and cluster bean in **Arid Western Plain Zone**.
- In **Himachal Pradesh**, maintain proper drainage channels in ginger, turmeric and maize fields in **Mid Hills Sub Humid Zone** and rice, maize and vegetable fields in **Sub Montane and Low Hills Sub Tropical Zone**. In **High Hills Sub Temperate Wet Zone**, harvest ripened tomatoes and ensure proper drainage in maize, kidney bean, vegetable fields and fruit orchards.
- In **Uttarakhand**, maintain proper drainage channels in fields of soybean, maize, pulses, finger millet, ginger, vegetable and fruit orchards in **Hill Zone**; barnyard millet, finger millet and green gram in **Sub Humid Sub Tropic Zone** and rice, green gram, black gram, sugarcane, maize, soybean, groundnut and vegetables in **Bhabar and Tarai Zone**.
- In **Punjab**, maintain proper drainage in chilli fields and remove stagnant rainwater immediately after rainfall in **Undulating Plain Zone**. Ensure proper drainage in fields of sugarcane, maize, soybean and green gram in **Sub-Montane Undulating Zone** and sugarcane, maize and cotton in **Central Plain Zone**.
- In **Haryana**, make arrangements to drain out excess water from fields of sugarcane, cotton, maize, pearl millet and vegetables in **Eastern Zone**.
- In **Meghalaya**, maintain proper drainage in ginger and vegetable fields and fruit orchards. Provide support to banana plants to prevent lodging. Maintain a thin 2-3 cm layer of stagnant water in rice fields after transplanting.
- In **Arunachal Pradesh**, ensure proper drainage in rice fields and maintain 5-7 cm water level. Maintain drainage channels in finger millet, banana and vegetable fields. Strengthen the bunds in millet fields to prevent erosion and seedling washout.

Livestock / Fishery

- Keep the animals inside the shed during heavy rainfall and provide them balanced feed.
- Store feed and fodder in a safe place to prevent spoilage.
- Construct an outlet with proper netting around the ponds to drain out excess water, thereby preventing fish from escaping in case of overflow.

Agromet advisories for likely impact of Thunderstorm / Gusty Winds / Squally Winds

- Provide mechanical support to horticultural crops and staking or support to vegetables and young fruit plants / fruit-bearing plants to avoid lodging due to strong winds.

Legends & abbreviations:

- **Heavy Rain:** 64.5-115.5mm; **Very Heavy Rain:** 115.6-204.4mm; **Extremely Heavy Rain:** >204.4mm.
- **Obsy:** Observatory; **Automatic Weather Station;** **ARG:** Automatic Rain Gauge; **dist:** District; **NH:** National Highway; **KVK:** Krishi Vigyan Kendra; **DVC:** Damodar Valley Corporation; **PTO:** Part Time Office, **Aero:** Aerodrome, **IAF:** Indian Air Force.

Region wise classification of meteorological Sub-Divisions:

- **Northwest India:** Western Himalayan Region (Jammu-Kashmir-Ladakh-Gilgit-Baltistan-Muzaffarabad, Himachal Pradesh and Uttarakhand); Punjab, Haryana-Chandigarh-Delhi; West Uttar Pradesh, East Uttar Pradesh, West Rajasthan and East Rajasthan.

***Red color warning does not mean "Red Alert" Red color warning means "Take Action"**

Forecast and warning for any day is valid from 0830 hours IST of day till 0830 hours IST of next day

For more details kindly visit <https://mausam.imd.gov.in> or contact 011-2434-4599

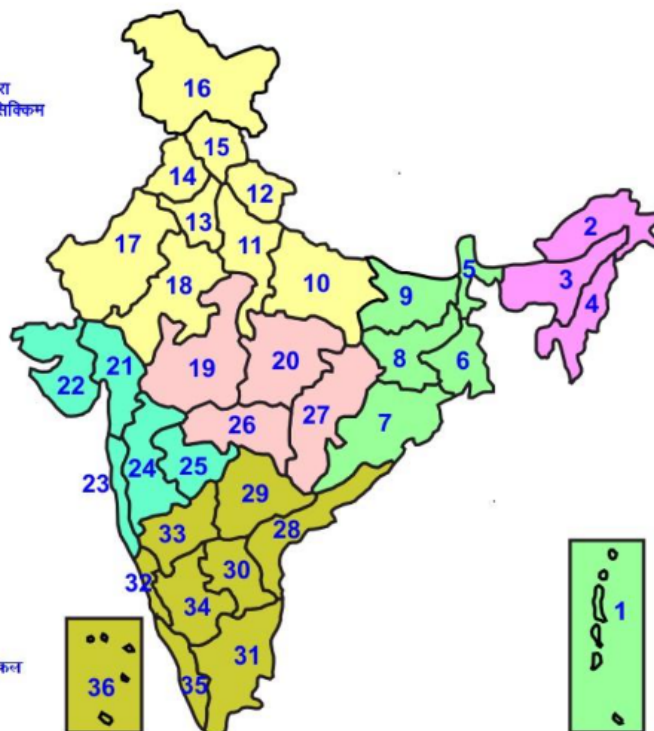
(Service to the nation since 1875)



- **Central India:** West Madhya Pradesh, East Madhya Pradesh, Vidarbha and Chhattisgarh.
- **East India:** Bihar, Jharkhand, Sub-Himalayan West Bengal & Sikkim; Gangetic West Bengal, Odisha and Andaman & Nicobar Islands.
- **Northeast India:** Arunachal Pradesh, Assam & Meghalaya and Nagaland, Manipur, Mizoram & Tripura.
- **West India:** Gujarat Region, Saurashtra & Kutch, Konkan & Goa, Madhya Maharashtra and Marathawada.
- **South India:** Coastal Andhra Pradesh & Yanam, Telangana, Rayalaseema, Coastal Karnataka, North Interior Karnataka, South Interior Karnataka, Kerala & Mahe, Tamil Nadu, Puducherry & Karaikal and Lakshadweep.

LEGENDS

- 1 अंडमान और निकोबार द्वीप समुह
- 2 अरुणाचल प्रदेश
- 3 असम और मेघालय
- 4 नागालैंड मनीपुर मीजोरम और त्रिपुरा
- 5 उप हिमालय पश्चिम बंगाल एवं सिक्किम
- 6 पश्चिम बंगाल
- 7 ओडिसा
- 8 झारखंड
- 9 बिहार
- 10 पूर्वी उत्तर प्रदेश
- 11 पश्चिम उत्तर प्रदेश
- 12 उत्तराखंड
- 13 हरियाणा चंडीगढ़ एवं दिल्ली
- 14 पंजाब
- 15 हिमाचल प्रदेश
- 16 जम्मू एवं कश्मीर एवं लद्दाख
- 17 पश्चिम राजस्थान
- 18 पूर्वी राजस्थान
- 19 पश्चिम मध्य प्रदेश
- 20 पूर्वी मध्य प्रदेश
- 21 गुजरात क्षेत्र
- 22 सौराष्ट्र एवं कच्छ
- 23 कोंकण एवं गोवा
- 24 मध्य महाराष्ट्र
- 25 मराठावाड़ा
- 26 विदर्भ
- 27 छत्तीसगढ़
- 28 तटीय आंध्र प्रदेश एवं यनम
- 29 तेलंगाना
- 30 रायलसीमा
- 31 तमिलनाडु, पुदुचेरी एवं कराईकल
- 32 तटिय कर्नाटक
- 33 आंतरिक उत्तरी कर्नाटक
- 34 आंतरिक दक्षिणी कर्नाटक
- 35 केरल एवं माहे
- 36 लक्षद्वीप



1. Andaman & Nicobar Islands
2. Arunachal Pradesh
3. Assam & Meghalaya
4. Nagaland, Manipur, Mizoram & Tripura
5. Sub-Himalayan West Bengal & Sikkim
6. Gangetic West Bengal
7. Orissa
8. Jharkhand
9. Bihar
10. East Uttar Pradesh
11. West Uttar Pradesh
12. Uttarakhand
13. Haryana, Chd & Delhi
14. Punjab
15. Himachal Pradesh
16. Jammu & Kashmir and Ladakh
17. West Rajasthan
18. East Rajasthan
19. West Madhya Pradesh
20. East Madhya Pradesh
21. Gujarat
22. Saurashtra
23. Konkan & Goa
24. Madhya Maharashtra
25. Marathawada
26. Vidharbha
27. Chhattisgarh
28. Coastal Andhra Pradesh & Yanam
29. Telangana
30. Rayalaseema
31. Tamilnadu, Puducherry & Karaikal
32. Coastal Karnataka
33. North Interior Karnataka
34. South Interior Karnataka
35. Kerala & Mahe
36. Lakshadweep

SPATIAL DISTRIBUTION (% of Stations reporting)


% Stations	Category	% Stations	Category
76-100	Widespread (WS/Most Places)	26-50	Scattered (SCT/ A Few Places)
51-75	Fairly Widespread (FWS/ Many Places)	1-25	Isolated (ISOL)


Subdivision Colour


- NO WARNING
- WATCH (BE UPDATED)
- ALERT (BE PREPARED TO TAKE ACTION)
- WARNING (TAKE ACTION)

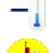
Probabilistic Forecast


Terms	Probability of Occurrence (%)
Unlikely	< 25
Likely	25 - 50
Very Likely	50 - 75
Most Likely	> 75


-  Heavy Rain


 Thunderstorm & Lightning


 Strong surface winds


 Cold Wave


 Hot & Humid


 Very Heavy Rain


 Hailstorm


 Heat Wave


 Cold Day


 Extremely Heavy Rain


 Dust Storm


 Hot Day

 Ground Frost

 Heavy Snow

 Dust Raising Winds

 Warm Night

 FOG Fog

*Red color warning does not mean "Red Alert" Red color warning means "Take Action"

Forecast and warning for any day is valid from 0830 hours IST of day till 0830 hours IST of next day

For more details kindly visit <https://mausam.imd.gov.in> or contact 011-2434-4599

(Service to the nation since 1875)

LEGENDS

WARNING

WARNING (TAKE ACTION)
ALERT (BE PREPARED)
WATCH (BE UPDATED)
NO WARNING (NO ACTION)

Probabilistic Forecast

Terms	Probability of Occurrence (%)
Unlikely	< 25
Likely	25 - 50
Very Likely	50 - 75
Most Likely	> 75



Heavy: 64.5 to 115.5 mm/cm *
Very Heavy: 115.6 to 204.4 mm/cm *
Extremely Heavy: > 204.4 mm/cm *



When maximum temperature of a station reaches $\geq 40^{\circ}\text{C}$ for plains and $\geq 30^{\circ}\text{C}$ for hilly regions
(a) Based on Departure from normal

Heat Wave: Maximum Temperature Departure from normal 4.5°C to 6.4°C .
Severe Heat Wave: Maximum Temperature Departure from normal $\geq 6.5^{\circ}\text{C}$

(b). Based on Actual maximum temperature

Heat Wave: When actual maximum temperature $\geq 45^{\circ}\text{C}$.
Severe Heat Wave: When actual maximum temperature $\geq 47^{\circ}\text{C}$

(c). Criteria for heat wave for coastal stations

When maximum temperature departure is $> 4.5^{\circ}\text{C}$ from normal. Heat Wave may be described provided maximum temperature $\geq 37^{\circ}\text{C}$



When maximum temperature remains 40°C

Warm Night: When minimum temperature departure 4.5°C to 6.4°C .
Severe Warm Night: When minimum temperature departure $> 6.4^{\circ}\text{C}$.



When minimum temperature of a station $\leq 10^{\circ}\text{C}$ for plains and $\leq 0^{\circ}\text{C}$ for hilly regions.

(a). Based on departure

Cold Wave: Minimum Temperature Departure from normal -4.5°C to -6.4°C .
Severe Cold Wave: Minimum Temperature Departure from normal $\leq -6.5^{\circ}\text{C}$

(b) Based on actual Minimum Temperature (for Plains only)

Cold Wave: When Minimum Temperature is $\leq 4.0^{\circ}\text{C}$
Severe Cold Wave: When Minimum Temperature is $\leq 2.0^{\circ}\text{C}$

(c) For Coastal Stations

When Minimum Temperature departure is $\leq -4.5^{\circ}\text{C}$ & actual Minimum Temperature is $\leq 15^{\circ}\text{C}$



When minimum temperature of a station $\leq 10^{\circ}\text{C}$ for plains and $\leq 0^{\circ}\text{C}$ for hilly regions
Based on departure

Cold Day: Maximum Temperature Departure from normal -4.5°C to -6.4°C .
Severe Cold Day: Maximum Temperature Departure from normal $\leq -6.5^{\circ}\text{C}$



Phenomenon of small droplets suspended in air and the horizontal visibility $< 1\text{km}$

Moderate Fog: When the visibility between 500-200 metres
Dense Fog: when the visibility between 50-200 metres
Very Dense Fog: when the visibility < 50 metres



Sudden electrical discharges manifested by a flash of light (Lightning) and a sharp rumbling sound (thunder)



An ensemble of particles of dust or sand energetically lifted to great heights by a strong and turbulent wind.



Ice deposits on ground

Air temperature $\leq 4^{\circ}\text{C}$ (over Plains)



A strong wind that rises suddenly, lasts for at least 1 minute.

Moderate: Wind speed 52-61 kmph
Severe: Wind speed 62-87 kmph
Very Severe: Wind speed > 87 kmph



Effect of various waves in the sea over specific area

Rough to very rough: Wind speed 41-62 kmph (22-33 knots) & Wave height 2.5-6 metre
High to very high: Wind speed 63-117 kmph (34-63 knots) & Wave height 6-14 metre
Phenomenal: Wind speed > 117 kmph (> 63 knots) & Wave height > 14 metre



Cyclonic Storm: Wind speed 62-87 kmph (34-47 knots)

Severe Cyclonic Storm: Wind speed 88-117 kmph (48-63 knots)
Very Severe Cyclonic Storm: Wind speed 118-165 kmph (64-89 knots)
Extremely Severe Cyclonic Storm: Wind speed 166-220 kmph (90-119 knots)
Super Cyclone Storm: Wind speed > 220 kmph (> 119 knots)

*Red color warning does not mean "Red Alert" Red color warning means "Take Action"

Forecast and warning for any day is valid from 0830 hours IST of day till 0830 hours IST of next day

For more details kindly visit <https://mausam.imd.gov.in> or contact 011-2434-4599

(Service to the nation since 1875)