

2025-08-13

Time of Issue: 13:26:00 hours IST
(Mid-Day)

ALL INDIA WEATHER SUMMARY AND FORECAST BULLETIN

Significant Weather Features

Weather, Forecast and Warnings :

Northwest India:

Extremely heavy rainfall very likely at isolated places over Uttarakhand on 13th August.

Isolated **heavy rainfall** likely over Jammu-Kashmir during 13th-18th; Himachal Pradesh, Uttarakhand during 13th-19th; Punjab during 14th-16th; Haryana, Chandigarh, West Uttar Pradesh during 13th-16th; East Uttar Pradesh on 14th; East Rajasthan during 14th-18th August with **very heavy rainfall** over Jammu- Kashmir on 14th & 15th; Himachal Pradesh on 13th & 14th; Uttarakhand during 13th-17th; West Uttar Pradesh during 13th -15th; East Uttar Pradesh on 13th August.

Light/moderate rainfall at most/many places accompanied with thunderstorm & lightning likely over Jammu-Kashmir-Ladakh-Gilgit-Baltistan-Muzaffarabad & Uttarakhand during next 7 days.

Northeast India:

Isolated **heavy rainfall** likely to continue over Arunachal Pradesh, Assam & Meghalaya during 13th-16th; Nagaland, Manipur, Mizoram & Tripura during 13th-17th August with **very heavy rainfall** over Arunachal Pradesh on 13th; Assam & Meghalaya on 13th & 16th August.

Light/moderate rainfall at many places accompanied with thunderstorm & lightning likely during next 4 days.

South Peninsular India:

Extremely heavy rainfall very likely at isolated places over Coastal Andhra Pradesh & Yanam on 13th; Telangana on 13th & 14th August.

Isolated **heavy rainfall** likely over Coastal Karnataka & North Interior Karnataka during 13th- 19th; South Interior Karnataka during 13th-17th; Rayalaseema on 14th; Coastal Andhra Pradesh & Yanam, Telangana during 13th-19th; Tamil Nadu, Puducherry & Karaikal on 13th; Kerala during 13th-15th August with isolated **very heavy rainfall** over Rayalaseema on 13th; Coastal Andhra Pradesh & Yanam on 14th; Telangana during 15th-17th; Coastal Karnataka on 18th & 19th August.

Strong surface winds (speed reaching 40-50 kmph) very likely over South Peninsular India during next 2 days.

Light to moderate rainfall at most/many places accompanied with thunderstorm & lightning likely over Rayalaseema, Coastal Andhra Pradesh & Yanam and Telangana during next 5 days.

East & Central India:

Extremely heavy rainfall very likely at isolated places over Bihar on 13th August.

Isolated **heavy rainfall** likely over Madhya Pradesh, Vidarbha & Chhattisgarh during 13th-19th; Gangetic West Bengal on 13th; Sub-Himalayan West Bengal & Sikkim on 14th & during 17th-19th; Bihar on 14th & 15th; Odisha during 13th-17th August with isolated **very heavy rainfall** over West Madhya Pradesh on 13th, 15th & 16th; East Madhya Pradesh & Odisha on 13th & 14th; Vidarbha on 13th, 14th, 17th, 18th; Chhattisgarh during 13th-17th; Sub-Himalayan West Bengal & Sikkim on 13th August.

Light to moderate rainfall at most/many places accompanied with thunderstorm & lightning likely over the region during next 7 days.

West India:

***Red color warning does not mean "Red Alert" Red color warning means "Take Action"**

Forecast and warning for any day is valid from 0830 hours IST of day till 0830 hours IST of next day

For more details kindly visit <https://mausam.imd.gov.in> or contact 011-2434-4599

(Service to the nation since 1875)



Isolated **heavy rainfall** likely over Madhya Maharashtra on 13th; Konkan & Goa during 13th-15th; Marathawada on 14th, 15th & 18th; Gujarat Region during 14th-19th; Saurashtra & Kutch during 17th-19th August **with isolated very heavy rainfall over Marathawada on 13th; Konkan & Goa, ghat areas of Madhya Maharashtra during 16th-19th August.**

Light to moderate rainfall at many/some places very likely over the region during next 5 days.

Main Weather Observations:

❖ **Rainfall distribution** (from 0830 hours IST of yesterday to 0830 hours IST of today): **at most places** over Andaman & Nicobar Islands, Arunachal Pradesh, Assam & Meghalaya, Nagaland, Manipur, Mizoram & Tripura, Sub Himalayan West Bengal & Sikkim, Bihar, Uttarakhand, Konkan & Goa, Chhattisgarh, Coastal Andhra Pradesh & Yanam, Telangana, Rayalaseema, Coastal Karnataka, North Interior Karnataka, South Interior Karnataka, Kerala & Mahe and Lakshadweep; **at many places** over East Uttar Pradesh, Himachal Pradesh, East Madhya Pradesh and Vidarbha; **at a few places** over Gangetic West Bengal, Odisha, Haryana-Chandigarh-Delhi, Punjab, Jammu-Kashmir-Ladakh-Gilgit-Baltistan-Muzaffarabad, Gujarat Region, Saurashtra & Kutch, Madhya Maharashtra and Marathwada; **at isolated places** over Jharkhand, West Uttar Pradesh, East Rajasthan, West Madhya Pradesh and Tamil Nadu, Puducherry & Karaikal; **Dry** over rest of the country.

❖ **Significant rainfall recorded(in cm)** (from 0830 hours IST of yesterday to 0830 hours IST of today): **Sub Himalayan West Bengal & Sikkim**: Newlands Tea Garden (dist Alipurduar) 36; Kumargram Tea Estate (dist Alipurduar) 33; Sankos Tea Estate (dist Alipurduar) 31; Sankosh (dist Cooch Behar) 25; Kumargram (dist Alipurduar) 23; Alipurduar PTO (dist Alipurduar), Raidak Tea Estate (dist Alipurduar) 21 Each; Chepan (dist Alipurduar) 19; Amfu Pundibari (dist Cooch Behar), Saraswatipur Tea Estate (dist Jalpaiguri), Majherdabri Tea Garden (dist Alipurduar) 18 Each; Falakata (dist Alipurduar), Bhatkawa Tea Estate (dist Jalpaiguri), Dima Tea Estate (dist Alipurduar) 17 Each; Singimari (dist Cooch Behar), Dalgaon Tea Estate (dist Alipurduar), Patkapara Tea Estate (dist Alipurduar), Toorsa Tea Garden (dist Alipurduar) 16 Each; Mathabhanga (dist Cooch Behar) 15; Buxaduar (dist Alipurduar), Siliguri PTO (dist Darjeeling) 14 Each; Suryasen Mahavidyalaya (dist Darjeeling) 13; Champasari (dist Darjeeling), Barobhisha (dist Alipurduar), Hasimara (dist Alipurduar), Aryaman Tea Estate (dist Alipurduar), Gopalpur Tea Estate (dist Alipurduar) 12 Each; Dhupguri (dist Jalpaiguri), Subhasini Tea Estate (dist Alipurduar) 11 Each; **Telangana**: Bheemini (dist Mancheri) 24; Chityal (dist J. Bhupalpally), Tandoomncl (dist Mancheri) 17 Each; Belampalle (dist Mancheri) 16; Kagaznagar (dist Kumaram Bheem), Regonda (dist J. Bhupalpally) 13 Each; Dahegaon (dist Kumaram Bheem), Srirampur (dist Peddapalle), Vemanapalle (dist Mancheri) 12 Each; Venkatapuram (dist Mulugu), Asifabad(ARG) (dist Kumaram Bheem), Asifabad (dist Kumaram Bheem), Kotapalle (dist Mancheri) 11 Each; **Bihar**: Khagadia (dist Khagaria) 21; Mansi (dist Khagaria) 19; Parsa (dist Saran) 16; Patarghat (dist Saharsa) 14; Taibpur (dist Kishanganj), Pothia (dist Kishanganj) 13 Each; Thakurganj (dist Kishanganj), Raniganj (dist Araria), Sattar Kataiya (dist Saharsa) 12 Each; Jokihat (dist Araria) 11; **Coastal Andhra Pradesh & Yanam**: Mangalagiri (dist Guntur) 19; Tenali (dist Guntur) 18; Karamchedu (dist Bapatla) 15; Avanigada (dist Krishna), Amaravati (dist Guntur) 14 Each; Atchampet (dist Palnadu), Guntur (dist Guntur), Bapatla (dist Bapatla) 13 Each; Gudivada (dist Krishna) 11; **Assam & Meghalaya**: Nalbari(Barkhetri Aws) (dist Nalbari), Ranganadi Nt Xing (dist Lakhimpur), lasst Kamrup ARG (dist Kamrup Metropolitan) 13 Each; Khowang (dist Dibrugarh), Majuli (dist Majuli) 12 Each; Nalbari/Pagladia (dist Nalbari), N.lakhimpur/Lilabari (dist Lakhimpur) 11 Each; **Chhattisgarh**: Raigarh (dist Raigarh) 12; **East Madhya Pradesh**: Umari-aws (dist Umari), Badwara (dist Katni) 12 Each; Karkeli (dist Umari) 11; **Arunachal Pradesh**: Itanagar (dist Papumpara), Naharlagun AWS (dist Papumpara) 12 Each.

❖ **Heavy Rainfall observed** (from 0830 hours IST of yesterday to 0830 hours IST of today): **Extremely heavy rain** at isolated places over Sub Himalayan West Bengal & Sikkim, Bihar and Telangana. **Heavy to very heavy rain** at isolated places over Arunachal Pradesh, Assam & Meghalaya, Sub Himalayan West Bengal & Sikkim, Bihar, East Madhya Pradesh, Chhattisgarh, Coastal Andhra Pradesh & Yanam and Telangana. **Heavy rain** at isolated places over Nagaland, Manipur, Mizoram & Tripura, Gangetic West Bengal, Odisha, East Uttar Pradesh, Uttarakhand, Vidarbha and Kerala & Mahe.

❖ **Minimum Temperature Departures (as on 13-08-2025)**: **markedly above normal(> 5.1°C)** at few places over Jammu-Kashmir-Ladakh-Gilgit-Baltistan-Muzaffarabad, West Madhya Pradesh and East Madhya Pradesh; at isolated places over Assam & Meghalaya, Bihar, East Uttar Pradesh, West Uttar Pradesh, Himachal Pradesh, West Rajasthan and Saurashtra & Kutch. **appreciably above normal(3.1°C to 5.0°C)** at few places over Sub Himalayan West Bengal & Sikkim and Uttarakhand; at isolated places over Gangetic West Bengal, Odisha and Gujarat Region. **above normal(1.6°C to 3.0°C)** at few places over East Rajasthan; at isolated places over Haryana-Chandigarh-Delhi, Punjab, Madhya Maharashtra, Vidarbha, Chhattisgarh and Tamil Nadu, Puducherry & Karaikal. **near normal(-1.5°C to 1.5°C)** at many places over Jharkhand, Coastal Andhra Pradesh & Yanam, Telangana, Rayalaseema and Kerala & Mahe; at most places over Andaman & Nicobar Islands, Nagaland, Manipur, Mizoram & Tripura, Konkan & Goa, Marathwada, Coastal Karnataka, North Interior Karnataka, South Interior Karnataka and Lakshadweep. **The lowest minimum temperature** of 18.4°C is reported at MATHERAN (MAHARASHTRA) over the Plains of India.

❖ **Maximum Temperature Departures (as on 12-08-2025)**: **markedly above normal(> 5.1°C)** at isolated places over Odisha, Himachal Pradesh and Chhattisgarh. **appreciably above normal(3.1°C to 5.0°C)** at few places over Gangetic

*Red color warning does not mean "Red Alert" Red color warning means "Take Action"

Forecast and warning for any day is valid from 0830 hours IST of day till 0830 hours IST of next day

For more details kindly visit <https://mausam.imd.gov.in> or contact 011-2434-4599

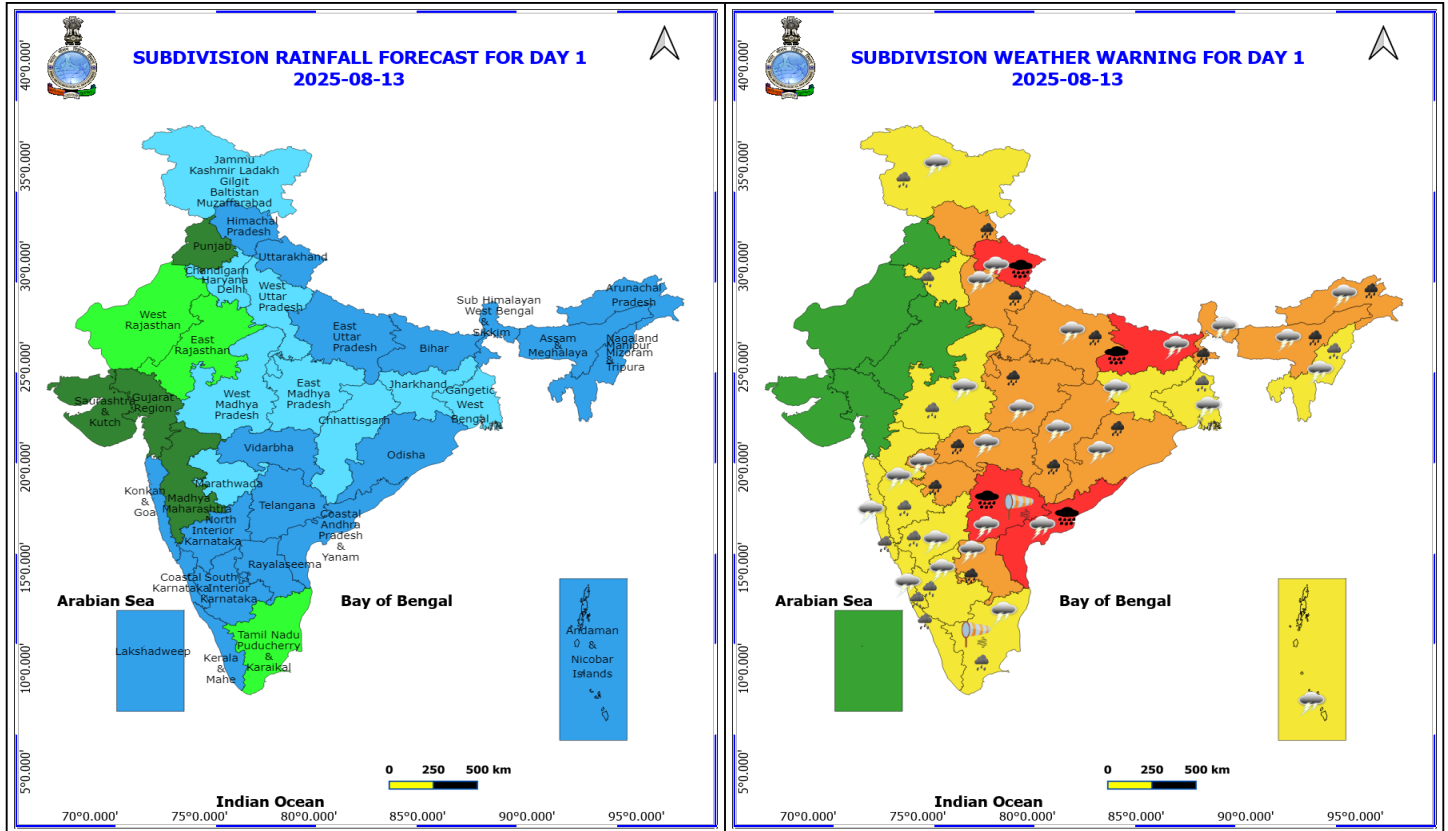
(Service to the nation since 1875)



West Bengal, Jammu-Kashmir-Ladakh-Gilgit-Baltistan-Muzaffarabad and Vidarbha; at isolated places over East Rajasthan, Gujarat Region, Madhya Maharashtra, Coastal Andhra Pradesh & Yanam, Telangana and Tamil Nadu, Puducherry & Karaikal. **above normal(1.6°C to 3.0°C)** at many places over Jharkhand and Saurashtra & Kutch; at few places over Nagaland, Manipur, Mizoram & Tripura, Bihar, West Madhya Pradesh, Konkan & Goa and Marathwada; at isolated places over Sub Himalayan West Bengal & Sikkim, East Uttar Pradesh, West Uttar Pradesh, Haryana-Chandigarh-Delhi, East Madhya Pradesh and Kerala & Mahe. **near normal(-1.5°C to 1.5°C)** at many places over Andaman & Nicobar Islands, Uttarakhand and South Interior Karnataka; at most places over West Rajasthan, Coastal Karnataka and Lakshadweep; at few places over Assam & Meghalaya and North Interior Karnataka. **The highest maximum temperature** of 37.0°C is reported at BOUDH (ORISSA).

Meteorological Analysis (Based on 0830 hours IST)

- The **Low Pressure** area over Westcentral & adjoining northwest Bay of Bengal off North Andhra Pradesh and South Odisha coasts persists over the same region at 0830 hrs IST of today, the 13th August 2025. The associated upper air cyclonic circulation extends upto 7.6 km above mean sea level tilting southwards with height. It is likely to move west-northwestwards and become well marked during next 24 hours. It is likely to move across North Coastal Andhra Pradesh and south Odisha during next 48 hours.
- The **monsoon trough** at mean sea level now passes through Bhatinda, Ambala, Shahjahanpur, Varanasi, Daltonganj, Jharsuguda and thence south-southeastwards to centre of low pressure area over Westcentral & adjoining northwest Bay of Bengal off North Andhra Pradesh and South Odisha coasts.
- An **upper air cyclonic circulation** lies over Kutch & neighbourhood at 3.1 km above mean sea level.
- The **east-west trough** now runs from central parts of Bay of Bengal to northeast Arabian sea adjoining Kutch across the upper air cyclonic circulation associated with the low pressure area over Westcentral & adjoining northwest Bay of Bengal off North Andhra Pradesh & South Odisha coast, Telangana, North Maharashtra and South Gujarat regions between 3.1 & 5.8 km above mean sea level tilting southward with height.
- The **upper air cyclonic circulation** over northeast Assam extending upto 3.1 km above mean sea level persists.
- The **upper air cyclonic circulation** over northwest Uttar Pradesh now lies over northwest Uttar Pradesh & adjoining Haryana extends upto 0.9 km above mean sea level.
- An **upper air cyclonic circulation** lies over East Uttar Pradesh & neighbourhood extends upto 1.5 km above mean sea level.
- The **trough** now runs from **upper air cyclonic circulation** over East Uttar Pradesh & neighbourhood to upper air cyclonic circulation associated with the low pressure area over Westcentral & adjoining northwest Bay of Bengal off North Andhra Pradesh and South Odisha coasts across Chhattisgarh upto 1.5 km above mean sea level.
- The **upper air cyclonic circulation** over North Interior Karnataka & neighbourhood at 5.8 km above mean sea level has become less marked.



13 August (Day 1)

- ❖ **Heavy to Very Heavy Rainfall with isolated Extremely Heavy Rainfall** very likely at isolated places over Bihar, Coastal Andhra Pradesh, Telangana and Uttarakhand.
- ❖ **Heavy to Very Heavy Rainfall** very likely at isolated places over Arunachal Pradesh, Assam & Meghalaya, Chhattisgarh, East Madhya Pradesh, Himachal Pradesh, Marathwada, Odisha, Rayalaseema, Sub Himalayan West Bengal & Sikkim, Uttar Pradesh and Vidarbha.
- ❖ **Heavy Rainfall** very likely at isolated places over Gangetic West Bengal, Haryana, Chandigarh & Delhi, Jammu-Kashmir-Ladakh-Gilgit-Baltistan-Muzaffarabad, Karnataka, Kerala & Mahe, Konkan & Goa, Madhya Maharashtra, Nagaland, Manipur, Mizoram and Tripura, Tamil Nadu Puducherry & Karaikal and West Madhya Pradesh.
- ❖ **Thunderstorm accompanied with lightning & gusty winds(40-50kmph)** very likely at isolated places over Andaman & Nicobar Islands, Chhattisgarh, North Interior Karnataka and Vidarbha.
- ❖ **Thunderstorm accompanied with lightning & gusty winds(30-40kmph)** very likely at isolated places over Bihar, Coastal Karnataka, Jammu-Kashmir-Ladakh-Gilgit-Baltistan-Muzaffarabad, Jharkhand, Odisha, Rayalaseema, South Interior Karnataka and West Bengal & Sikkim.
- ❖ **Thunderstorm accompanied with Lightning** very likely at isolated places over Arunachal Pradesh, Assam & Meghalaya, Coastal Andhra Pradesh, Konkan & Goa, Madhya Maharashtra, Madhya Pradesh, Marathwada, Nagaland, Manipur, Mizoram and Tripura, Tamil Nadu Puducherry & Karaikal, Telangana, Uttar Pradesh and Uttarakhand.
- ❖ **Strong Surface Winds** very likely at isolated places over Tamil Nadu Puducherry & Karaikal and Telangana.

Squally wind with speed reaching 45 kmph to 55 kmph gusting to 65 kmph is likely to prevail along and off Somalia,

***Red color warning does not mean "Red Alert" Red color warning means "Take Action"**

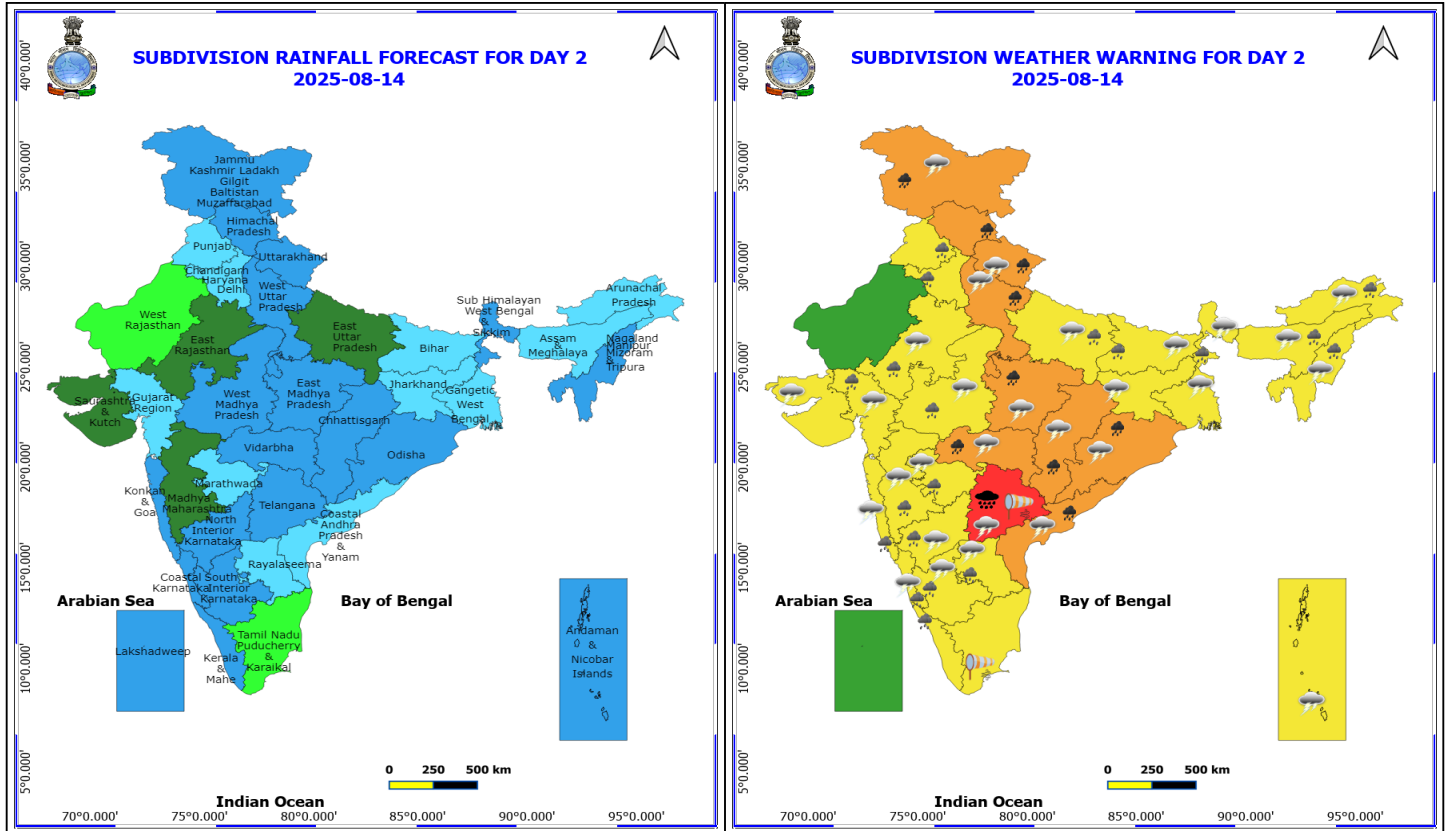
Forecast and warning for any day is valid from 0830 hours IST of day till 0830 hours IST of next day

For more details kindly visit <https://mausam.imd.gov.in> or contact 011-2434-4599

(Service to the nation since 1875)

Yemen, Oman coasts, most parts of westcentral Arabian sea and adjoining areas southwest, eastcentral, northwest Arabian Sea.

Squally weather with wind speed reaching 40 - 50 kmph gusting to 60 kmph likely to prevail along and off north Gujarat coast & adjoining northeast & eastcentral Arabian Sea, along and off Konkan, Goa, Karnataka, Kerala coasts, over Lakshadweep, Comorin areas, Gulf of Mannar, along and off Sri-Lanka coast, over most parts of south & central Bay of Bengal & adjoining northwest Bay of Bengal, over Andaman Sea, along and off north Andhra Pradesh, south Odisha coasts & adjoining sea areas.



14 August (Day 2)

- ❖ **Heavy to Very Heavy Rainfall with isolated Extremely Heavy Rainfall** very likely at isolated places over Telangana.
- ❖ **Heavy to Very Heavy Rainfall** very likely at isolated places over Chhattisgarh, Coastal Andhra Pradesh, East Madhya Pradesh, Himachal Pradesh, Jammu-Kashmir-Ladakh-Gilgit-Baltistan-Muzaffarabad, Odisha, Uttarakhand, Vidarbha and West Uttar Pradesh.
- ❖ **Heavy Rainfall** very likely at isolated places over Arunachal Pradesh, Assam & Meghalaya, Bihar, East Rajasthan, East Uttar Pradesh, Gujarat Region, Haryana, Chandigarh & Delhi, Karnataka, Kerala & Mahe, Konkan & Goa, Madhya Maharashtra, Marathwada, Nagaland, Manipur, Mizoram and Tripura, Punjab, Rayalaseema, Sub Himalayan West Bengal & Sikkim and West Madhya Pradesh.
- ❖ **Thunderstorm accompanied with lightning & gusty winds(40-50kmph)** very likely at isolated places over Andaman & Nicobar Islands, Chhattisgarh, North Interior Karnataka and Vidarbha.
- ❖ **Thunderstorm accompanied with lightning & gusty winds(30-40kmph)** very likely at isolated places over Bihar, Coastal Karnataka, Jammu-Kashmir-Ladakh-Gilgit-Baltistan-Muzaffarabad, Jharkhand, Odisha, Rayalaseema, South Interior Karnataka and West Bengal & Sikkim.
- ❖ **Thunderstorm accompanied with Lightning** very likely at isolated places over Arunachal Pradesh, Assam & Meghalaya, Coastal Andhra Pradesh, East Rajasthan, Gujarat State, Konkan & Goa, Madhya Maharashtra, Madhya Pradesh, Marathwada, Nagaland, Manipur, Mizoram and Tripura, Telangana, Uttar Pradesh and Uttarakhand.
- ❖ **Strong Surface Winds** very likely at isolated places over Tamil Nadu Puducherry & Karaikal and Telangana.

Squally wind with speed reaching 45 kmph to 55 kmph gusting to 65 kmph is likely to prevail along and off Somalia,

***Red color warning does not mean "Red Alert" Red color warning means "Take Action"**

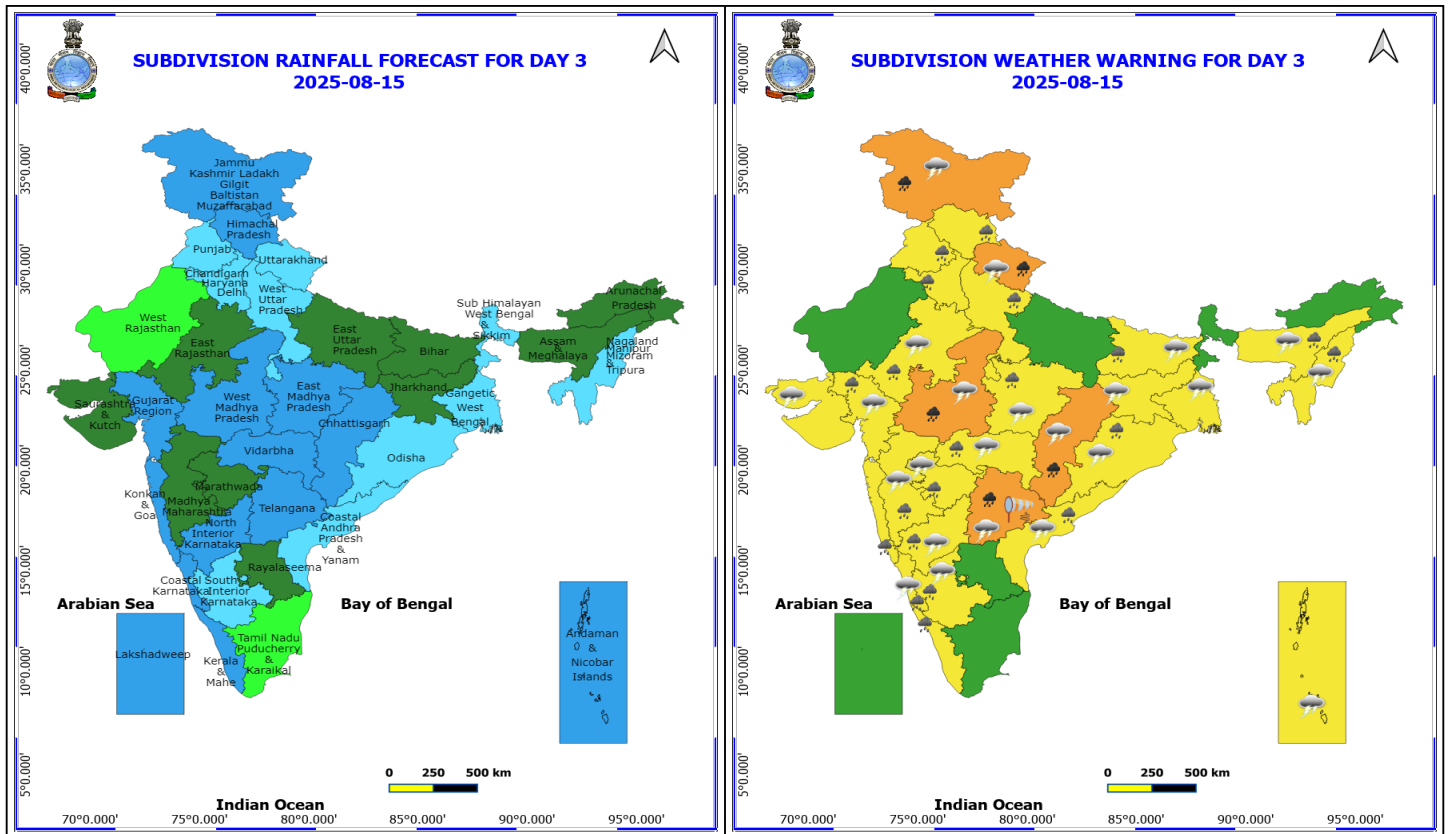
Forecast and warning for any day is valid from 0830 hours IST of day till 0830 hours IST of next day

For more details kindly visit <https://mausam.imd.gov.in> or contact 011-2434-4599

(Service to the nation since 1875)

Yemen, Oman coasts, most parts of westcentral Arabian sea and adjoining areas southwest, eastcentral, northwest Arabian Sea.

Squally weather with wind speed reaching 40 - 50 kmph gusting to 60 kmph likely to prevail along and off Konkan, Goa, Karnataka, Kerala coasts, over Lakshadweep, Comorin areas, Gulf of Mannar, along and off Sri-Lanka coast, over most parts of south & central Bay of Bengal & adjoining, some parts of north Bay of Bengal, over Andaman sea, along and off north Andhra Pradesh, south Odisha coasts & adjoining sea areas.



15 August (Day 3)

- ❖ **Heavy to Very Heavy Rainfall** very likely at isolated places over Chhattisgarh, Jammu-Kashmir-Ladakh-Gilgit-Baltistan-Muzaffarabad, Telangana, Uttarakhand and West Madhya Pradesh.
- ❖ **Heavy Rainfall** very likely at isolated places over Assam & Meghalaya, Bihar, Coastal Andhra Pradesh, East Madhya Pradesh, East Rajasthan, Gujarat Region, Haryana, Chandigarh & Delhi, Himachal Pradesh, Karnataka, Kerala & Mahe, Konkan & Goa, Maharashtra, Nagaland, Manipur, Mizoram and Tripura, Odisha, Punjab and West Uttar Pradesh.
- ❖ **Thunderstorm accompanied with lightning & gusty winds(40-50kmph)** very likely at isolated places over North Interior Karnataka.
- ❖ **Thunderstorm accompanied with lightning & gusty winds(30-40kmph)** very likely at isolated places over Andaman & Nicobar Islands, Bihar, Coastal Karnataka, Gangetic West Bengal, Jammu-Kashmir-Ladakh-Gilgit-Baltistan-Muzaffarabad, Jharkhand, Odisha and South Interior Karnataka.
- ❖ **Thunderstorm accompanied with Lightning** very likely at isolated places over Assam & Meghalaya, Chhattisgarh, Coastal Andhra Pradesh, East Rajasthan, Gujarat State, Madhya Pradesh, Maharashtra, Nagaland, Manipur, Mizoram and Tripura, Telangana and Uttarakhand.
- ❖ **Strong Surface Winds** very likely at isolated places over Telangana.

Squally wind with speed reaching 45 kmph to 55 kmph gusting to 65 kmph is likely to prevail along and off Somalia, Yemen, Oman coasts, most parts of westcentral Arabian sea and adjoining areas southwest, eastcentral Arabian Sea.

Squally weather with wind speed reaching 40 - 50 kmph gusting to 60 kmph likely to prevail along and off Konkan,

***Red color warning does not mean "Red Alert" Red color warning means "Take Action"**

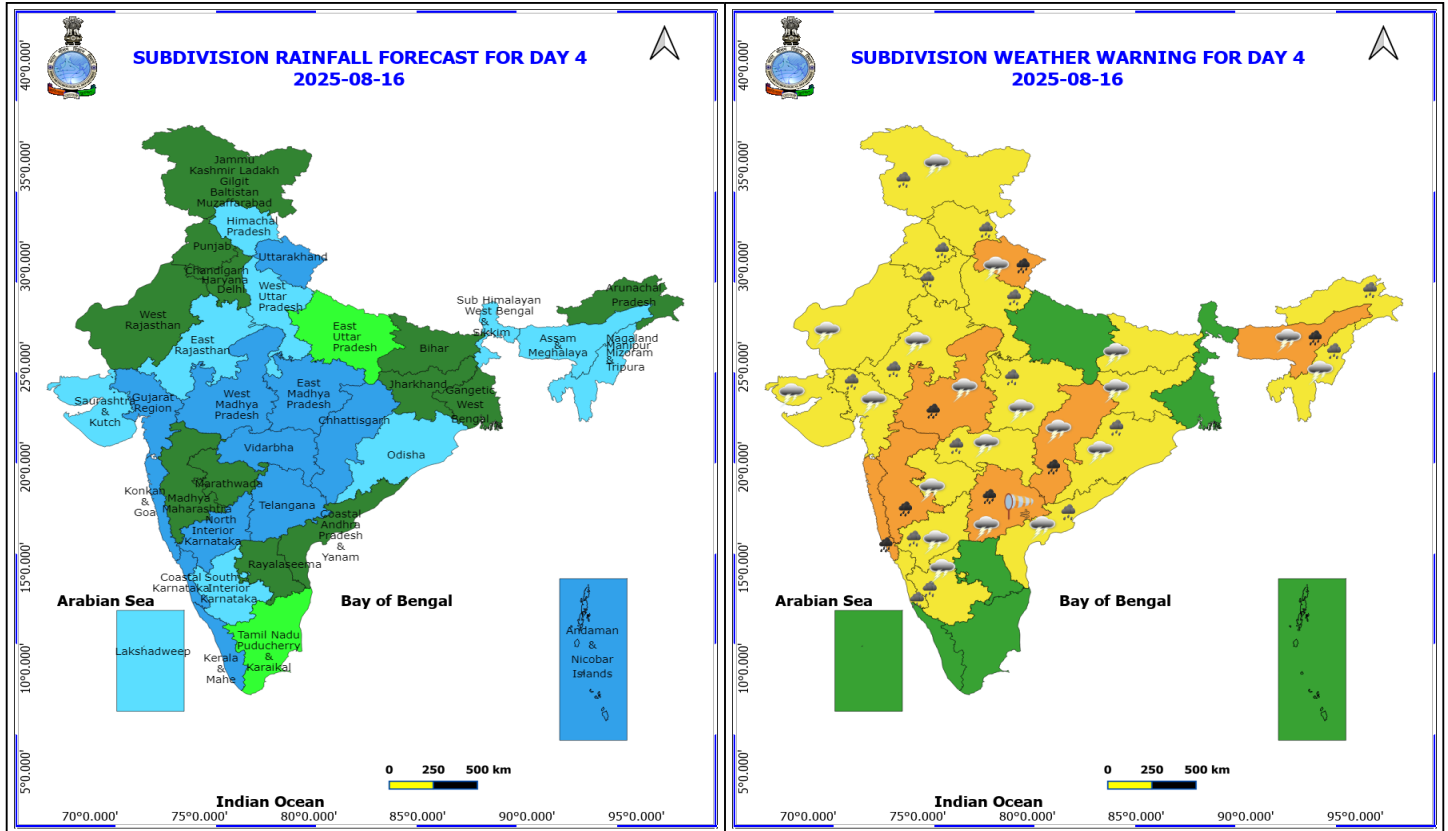
Forecast and warning for any day is valid from 0830 hours IST of day till 0830 hours IST of next day

For more details kindly visit <https://mausam.imd.gov.in> or contact 011-2434-4599

(Service to the nation since 1875)



Goa, Karnataka, Kerala coasts, over Lakshadweep, Comorin areas, Gulf of Mannar, along and off Sri-Lanka coast, over most parts of south & central Bay of Bengal & adjoining, some parts of north Bay of Bengal, along and off Tamil Nadu, Andhra Pradesh, south Odisha coasts, adjoining sea areas and over Andaman sea.



16 August (Day 4)

- ❖ **Heavy to Very Heavy Rainfall** likely at isolated places over Assam & Meghalaya, Chhattisgarh, Konkan & Goa, Madhya Maharashtra, Telangana, Uttarakhand and West Madhya Pradesh.
- ❖ **Heavy Rainfall** likely at isolated places over Arunachal Pradesh, Coastal Andhra Pradesh, East Madhya Pradesh, East Rajasthan, Gujarat Region, Haryana, Chandigarh & Delhi, Himachal Pradesh, Jammu-Kashmir-Ladakh-Gilgit-Baltistan-Muzaffarabad, Karnataka, Nagaland, Manipur, Mizoram and Tripura, Odisha, Punjab, Vidarbha and West Uttar Pradesh.
- ❖ **Thunderstorm accompanied with lightning & gusty winds(40-50kmph)** likely at isolated places over North Interior Karnataka.
- ❖ **Thunderstorm accompanied with lightning & gusty winds(30-40kmph)** likely at isolated places over Bihar, Jammu-Kashmir-Ladakh-Gilgit-Baltistan-Muzaffarabad, Jharkhand, Odisha and South Interior Karnataka.
- ❖ **Thunderstorm accompanied with Lightning** likely at isolated places over Assam & Meghalaya, Chhattisgarh, Coastal Andhra Pradesh, Gujarat State, Madhya Pradesh, Marathwada, Nagaland, Manipur, Mizoram and Tripura, Rajasthan, Telangana, Uttarakhand and Vidarbha.
- ❖ **Strong Surface Winds** likely at isolated places over Telangana.

Squally wind with speed reaching 45 kmph to 55 kmph gusting to 65 kmph is likely to prevail along and off Somalia, Yemen, Oman coasts, most parts of westcentral Arabian sea and adjoining areas southwest, eastcentral Arabian Sea.

Squally weather with wind speed reaching 40 - 50 kmph gusting to 60 kmph likely to prevail along and off along and off Konkan & Goa coasts, over Gulf of Mannar and adjoining Comorin area, along and off Sri-Lanka coast, over some

***Red color warning does not mean "Red Alert" Red color warning means "Take Action"**

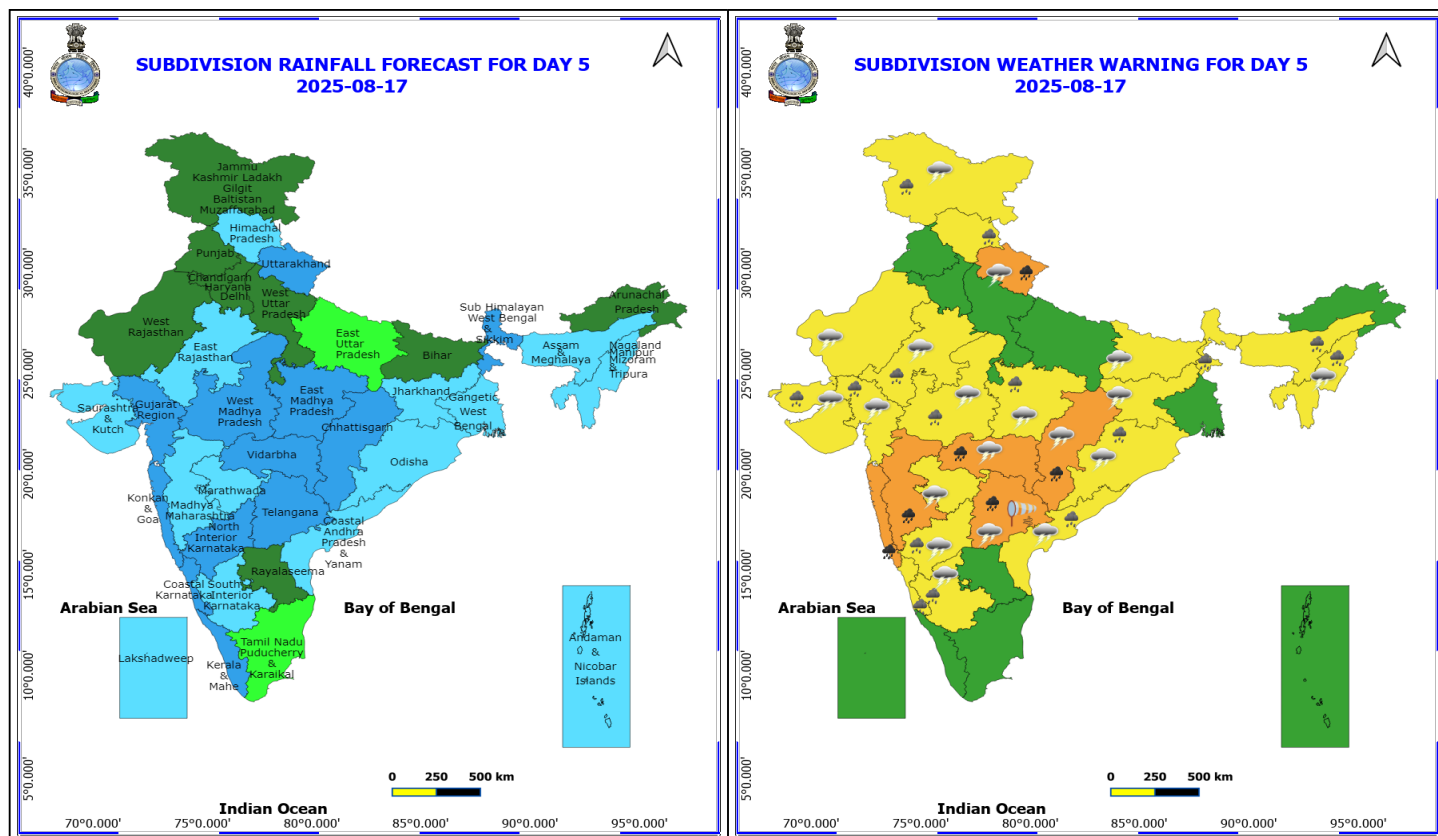
Forecast and warning for any day is valid from 0830 hours IST of day till 0830 hours IST of next day

For more details kindly visit <https://mausam.imd.gov.in> or contact 011-2434-4599

(Service to the nation since 1875)



parts of southwest Bay of Bengal, along and off north Tamil Nadu, Andhra Pradesh coasts, adjoining Odisha coasts, adjoining sea areas, westcentral & adjoining areas of eastcentral & northwest Bay of Bengal.



17 August (Day 5)

- ❖ **Heavy to Very Heavy Rainfall** likely at isolated places over Chhattisgarh, Konkan & Goa, Madhya Maharashtra, Telangana, Uttarakhand and Vidarbha.
- ❖ **Heavy Rainfall** likely at isolated places over Assam & Meghalaya, Coastal Andhra Pradesh, East Rajasthan, Gujarat State, Himachal Pradesh, Jammu-Kashmir-Ladakh-Gilgit-Baltistan-Muzaffarabad, Karnataka, Madhya Pradesh, Nagaland, Manipur, Mizoram and Tripura, Odisha and Sub Himalayan West Bengal & Sikkim.
- ❖ **Thunderstorm accompanied with lightning & gusty winds(40-50kmph)** likely at isolated places over North Interior Karnataka.
- ❖ **Thunderstorm accompanied with lightning & gusty winds(30-40kmph)** likely at isolated places over Bihar, Jammu-Kashmir-Ladakh-Gilgit-Baltistan-Muzaffarabad, Jharkhand, Odisha and South Interior Karnataka.
- ❖ **Thunderstorm accompanied with Lightning** likely at isolated places over Chhattisgarh, Coastal Andhra Pradesh, Gujarat State, Madhya Pradesh, Marathwada, Nagaland, Manipur, Mizoram and Tripura, Rajasthan, Telangana, Uttarakhand and Vidarbha.
- ❖ **Strong Surface Winds** likely at isolated places over Telangana.

Squally wind with speed reaching 45 kmph to 55 kmph gusting to 65 kmph is likely to prevail along and off Somalia, Yemen, Oman coasts, most parts of westcentral Arabian sea and adjoining areas southwest, eastcentral Arabian Sea.

Squally weather with wind speed reaching 40 - 50 kmph gusting to 60 kmph likely to prevail over Gulf of Mannar and adjoining Comorin area, along and off Sri-Lanka coast, over some parts of southwest Bay of Bengal, off north Andhra Pradesh & Odisha coasts, adjoining sea areas, many parts of westcentral Bay of Bengal, adjoining eastcentral Bay of

***Red color warning does not mean "Red Alert" Red color warning means "Take Action"**

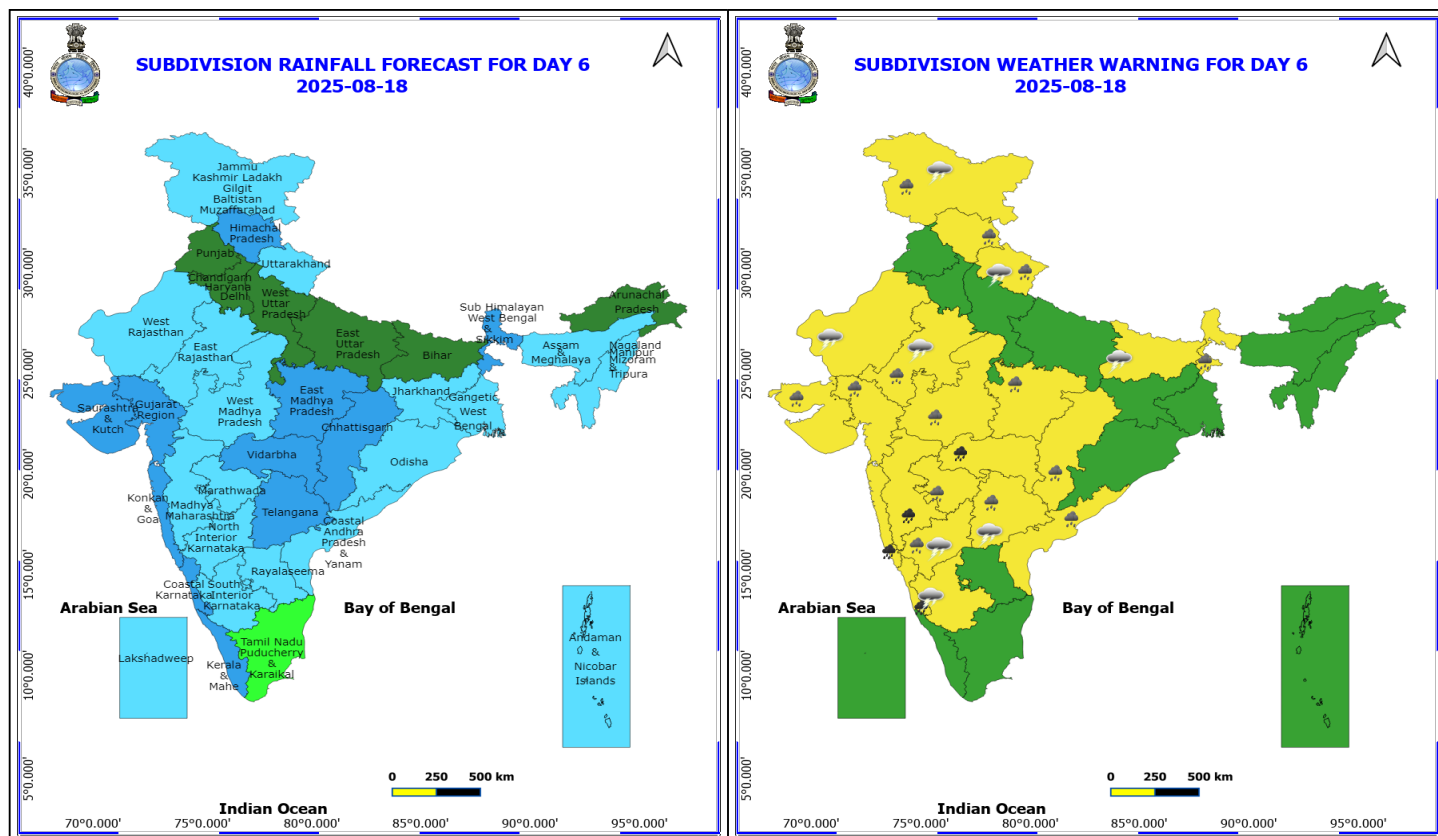
Forecast and warning for any day is valid from 0830 hours IST of day till 0830 hours IST of next day

For more details kindly visit <https://mausam.imd.gov.in> or contact 011-2434-4599

(Service to the nation since 1875)



Bengal.



18 August (Day 6)

- ❖ **Heavy to Very Heavy Rainfall** likely at isolated places over Coastal Karnataka, Konkan & Goa, Madhya Maharashtra and Vidarbha.
- ❖ **Heavy Rainfall** likely at isolated places over Chhattisgarh, Coastal Andhra Pradesh, East Rajasthan, Gujarat State, Himachal Pradesh, Jammu-Kashmir-Ladakh-Gilgit-Baltistan-Muzaffarabad, Madhya Pradesh, Marathwada, North Interior Karnataka, Sub Himalayan West Bengal & Sikkim, Telangana and Uttarakhand.
- ❖ **Thunderstorm accompanied with lightning & gusty winds(30-40kmph)** likely at isolated places over Bihar, Interior Karnataka and Jammu-Kashmir-Ladakh-Gilgit-Baltistan-Muzaffarabad.
- ❖ **Thunderstorm accompanied with Lightning** likely at isolated places over Rajasthan, Telangana and Uttarakhand.

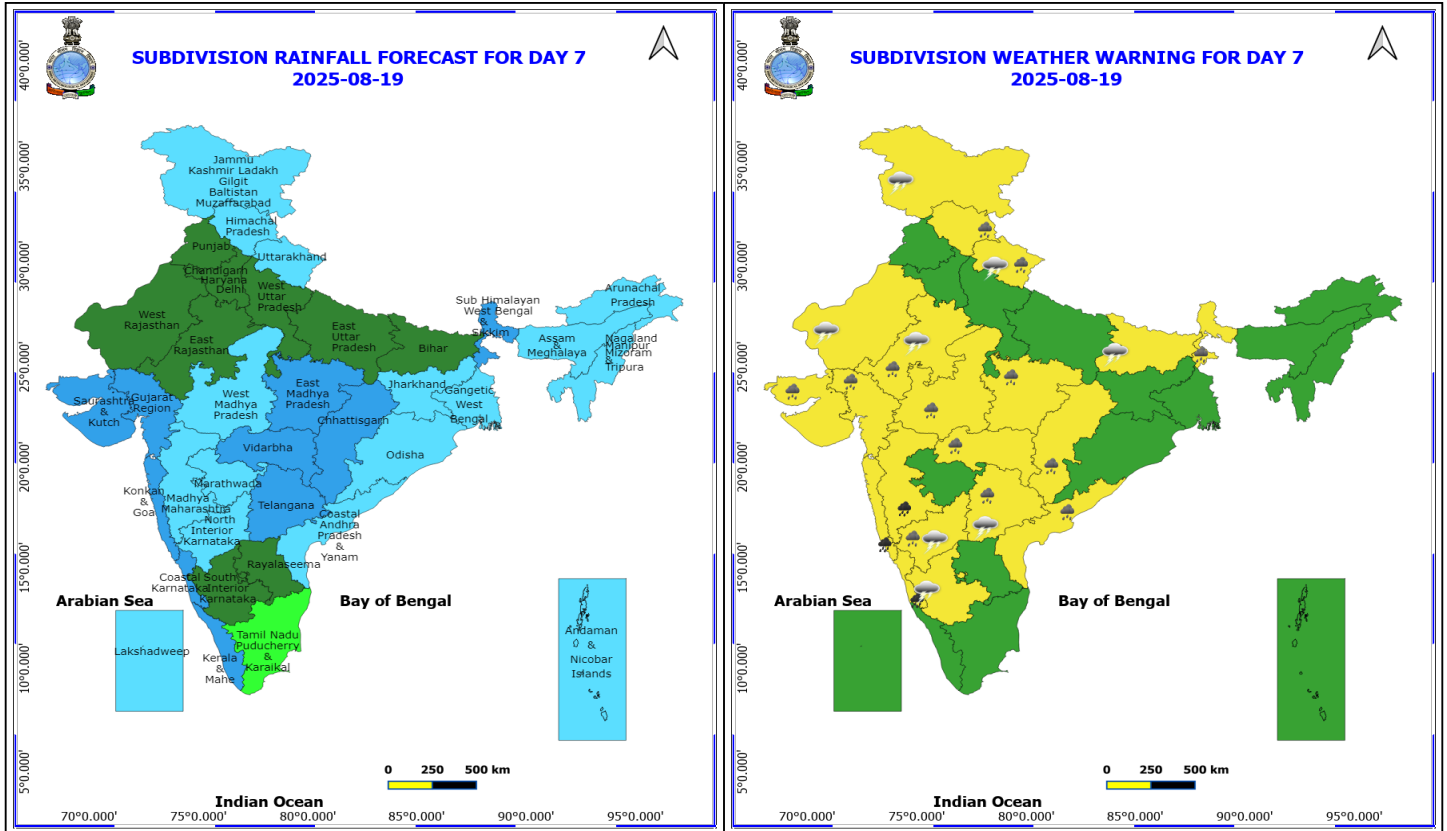
No Fishermen Warning

***Red color warning does not mean "Red Alert" Red color warning means "Take Action"**

Forecast and warning for any day is valid from 0830 hours IST of day till 0830 hours IST of next day

For more details kindly visit <https://mausam.imd.gov.in> or contact 011-2434-4599

(Service to the nation since 1875)



19 August (Day 7)

- ❖ **Heavy to Very Heavy Rainfall** likely at isolated places over Coastal Karnataka, Konkan & Goa and Madhya Maharashtra.
- ❖ **Heavy Rainfall** likely at isolated places over Chhattisgarh, Coastal Andhra Pradesh, East Rajasthan, Gujarat State, Himachal Pradesh, Madhya Pradesh, North Interior Karnataka, Sub Himalayan West Bengal & Sikkim, Telangana, Uttarakhand and Vidarbha.
- ❖ **Thunderstorm accompanied with lightning & gusty winds(30-40kmph)** likely at isolated places over Bihar, Interior Karnataka and Jammu-Kashmir-Ladakh-Gilgit-Baltistan-Muzaffarabad.
- ❖ **Thunderstorm accompanied with Lightning** likely at isolated places over Rajasthan, Telangana and Uttarakhand.

No Fishermen Warning

Flash Flood Warnings

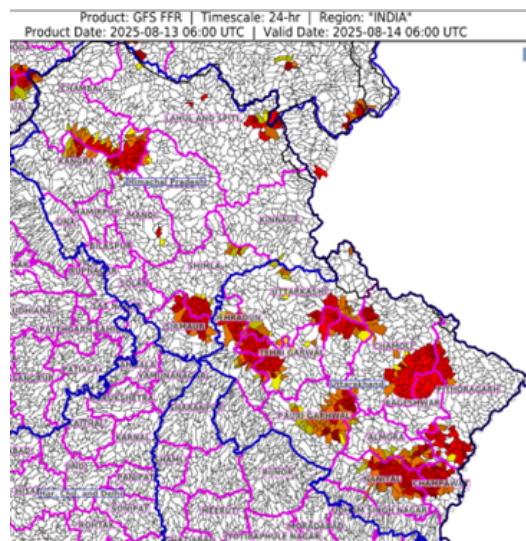
24 hours Outlook for the Flash Flood Risk (FFR) till 1130 IST of 14-08-2025 :

Low to Moderate flash flood risk likely over few watersheds & neighbourhoods of following Met Sub-divisions during next 24 hours.

Himachal Pradesh - Chamba, Kangra, Kullu, Lahul&Spiti, Mandi, Shimla and Sirmaur districts.

Uttarakhand - Almora, Bageshwar, Chamoli, Champawat, Dehradun, Nanital, Pauri Garhwal, Pithoragarh, Rudraprayag, Tehri Garwal and Uttarkashi districts.

Surface runoff/ Inundation may occur at some fully saturated soils & low-lying areas over Area of Concern (AoC) as shown in map due to expected rainfall occurrence in next 24 hours.



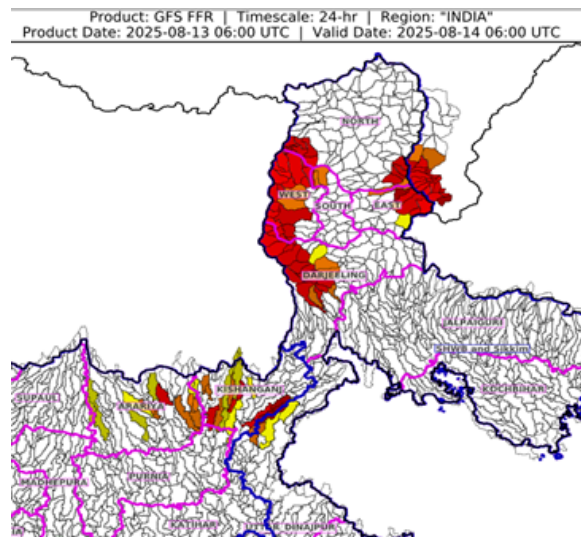
24 hours Outlook for the Flash Flood Risk (FFR) till 1130 IST of 14-08-2025 :

Low to Moderate flash flood risk likely over few watersheds & neighbourhoods of following Met Sub-divisions during next 24 hours.

Bihar - Arariya and Kishanganj districts.

Sub-Himalayan West Bengal & Sikkim - East Sikkim, North Sikkim, West Sikkim, Darjeeling and Uttar_Dinajpur districts.

Surface runoff/ Inundation may occur at some fully saturated soils & low-lying areas over Area of Concern (AoC) as shown in map due to expected rainfall occurrence in next 24 hours.



24 hours Outlook for the Flash Flood Risk (FFR) till 1130 IST of 14-08-2025 :

Low to Moderate flash flood risk likely over few watersheds & neighbourhoods of following Met Sub-divisions during next 24 hours.

Coastal Andhra Pradesh & Yanam - East Godavari, Guntur, Krishna and West Godavari districts.

***Red color warning does not mean "Red Alert" Red color warning means "Take Action"**

Forecast and warning for any day is valid from 0830 hours IST of day till 0830 hours IST of next day

For more details kindly visit <https://mausam.imd.gov.in> or contact 011-2434-4599

(Service to the nation since 1875)

North Interior Karnataka - Bidar and Gulbarga districts.
Telangana - Jagtial, Kamareddy, Khammam, Mahabubnagar, Mancheria, Medak, Nirmal, Nizamabad, Peddapalle, Rajanna Sircilla, Sangareddy, Suryapet and Vikarabad districts.
Marathawada - Latur, Nanded and Osmanabad districts.

Surface runoff/ Inundation may occur at some fully saturated soils & low-lying areas over Area of Concern (AoC) as shown in map due to expected rainfall occurrence in next 24 hours.

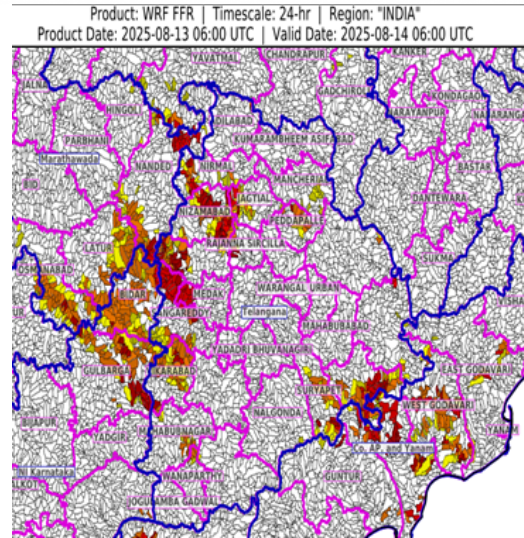




Table-1

7 Days Rainfall Forecast

S.No.	Subdivision	13-Aug	14-Aug	15-Aug	16-Aug	17-Aug	18-Aug	19-Aug
		Day 1	Day 2	Day 3	Day 4	Day 5	Day 6	Day 7
1	ANDAMAN & NICOBAR ISLANDS	WS	WS	WS	WS	FWS	FWS	FWS
2	ARUNACHAL PRADESH	WS	FWS	SCT	SCT	SCT	SCT	FWS
3	ASSAM & MEHGHALAYA	WS	FWS	SCT	FWS	FWS	FWS	FWS
4	N. M. M. & T.	WS	WS	FWS	FWS	FWS	FWS	FWS
5	S.H. WEST BENGAL & SIKKIM	WS	WS	FWS	FWS	WS	WS	WS
6	GANGETIC WEST BENGAL	FWS	FWS	FWS	SCT	FWS	FWS	FWS
7	ODISHA	WS	WS	FWS	FWS	FWS	FWS	FWS
8	JHARKHAND	FWS	FWS	SCT	SCT	FWS	FWS	FWS
9	BIHAR	WS	FWS	SCT	SCT	SCT	SCT	SCT
10	EAST UTTAR PRADESH	WS	SCT	SCT	ISOL	ISOL	SCT	SCT
11	WEST UTTAR PRADESH	FWS	WS	FWS	FWS	SCT	SCT	SCT
12	UTTARAKHAND	WS	WS	FWS	WS	WS	FWS	FWS
13	HARYANA, CHD & DELHI	FWS	FWS	FWS	SCT	SCT	SCT	SCT
14	PUNJAB	SCT	FWS	FWS	SCT	SCT	SCT	SCT
15	HIMACHAL PRADESH	WS	WS	WS	FWS	FWS	WS	FWS
16	JAMMU AND KASHMIR AND LADAKH	FWS	WS	WS	SCT	SCT	FWS	FWS
17	WEST RAJASTHAN	ISOL	ISOL	ISOL	SCT	SCT	FWS	SCT
18	EAST RAJASTHAN	ISOL	SCT	SCT	FWS	FWS	FWS	SCT
19	WEST MADHYA PRADESH	FWS	WS	WS	WS	WS	FWS	FWS
20	EAST MADHYA PRADESH	FWS	WS	WS	WS	WS	WS	WS
21	GUJRAT REGION	SCT	FWS	WS	WS	WS	WS	WS
22	SAURASHTRA & KUTCH	SCT	SCT	SCT	FWS	FWS	WS	WS
23	KONKAN & GOA	WS	WS	WS	WS	WS	WS	WS
24	MADHYA MAHARASHTRA	SCT	SCT	SCT	SCT	FWS	FWS	FWS
25	MARATHWADA	FWS	FWS	SCT	SCT	FWS	FWS	FWS
26	VIDARBHA	WS	WS	WS	WS	WS	WS	WS
27	CHATTISGARH	FWS	WS	WS	WS	WS	WS	WS
28	COASTAL ANDHRA PRADESH	WS	FWS	FWS	SCT	FWS	FWS	FWS
29	TELANGANA	WS	WS	WS	WS	WS	WS	WS
30	RAYALASEEMA	WS	FWS	SCT	SCT	SCT	FWS	SCT
31	TAMILNADU & PUDUCHERRY	ISOL	ISOL	ISOL	ISOL	ISOL	ISOL	ISOL
32	COSTAL KARNATAKA	WS	WS	WS	WS	WS	WS	WS
33	NORTH INTERIOR KARNATAKA	WS	WS	WS	WS	WS	FWS	FWS
34	SOUTH INTERIOR KARNATAKA	WS	WS	FWS	FWS	FWS	FWS	SCT
35	KERALA	WS	WS	WS	WS	WS	WS	WS
36	LAKSHDWEEP	WS	WS	WS	FWS	FWS	FWS	FWS

Legend	Category	%Stations
WS	Widespread/Most Places	76-100
FWS	Fairly Widespread/Many Places	51-75
SCT	Scattered/ A Few Places	26-50
ISOL	Isolated Places	1-25
DRY	No Rain	0

*Red color warning does not mean "Red Alert" Red color warning means "Take Action"

Forecast and warning for any day is valid from 0830 hours IST of day till 0830 hours IST of next day

For more details kindly visit <https://mausam.imd.gov.in> or contact 011-2434-4599

(Service to the nation since 1875)

Fig. 1: Maximum Temperatures Dated 2025-08-13

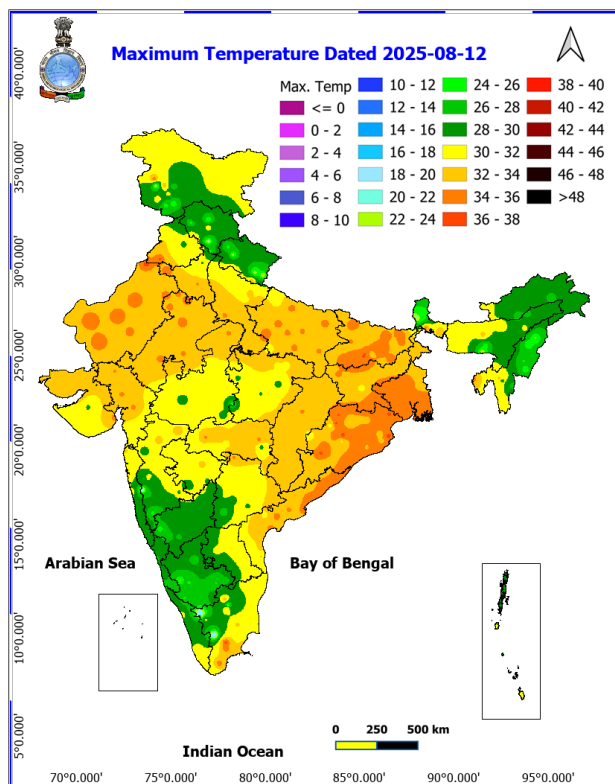


Fig. 2: Departure of Maximum Temp. Dated 2025-08-13

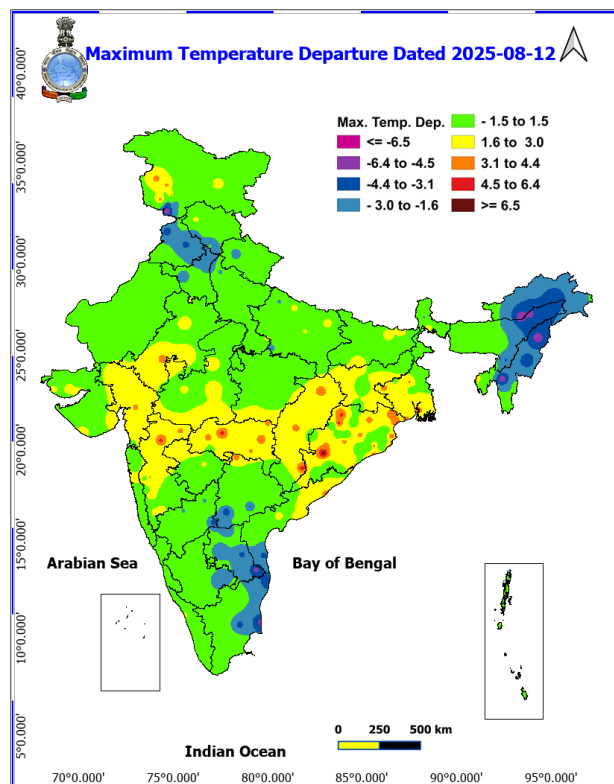


Fig. 3: Minimum Temperatures Dated 2025-08-13

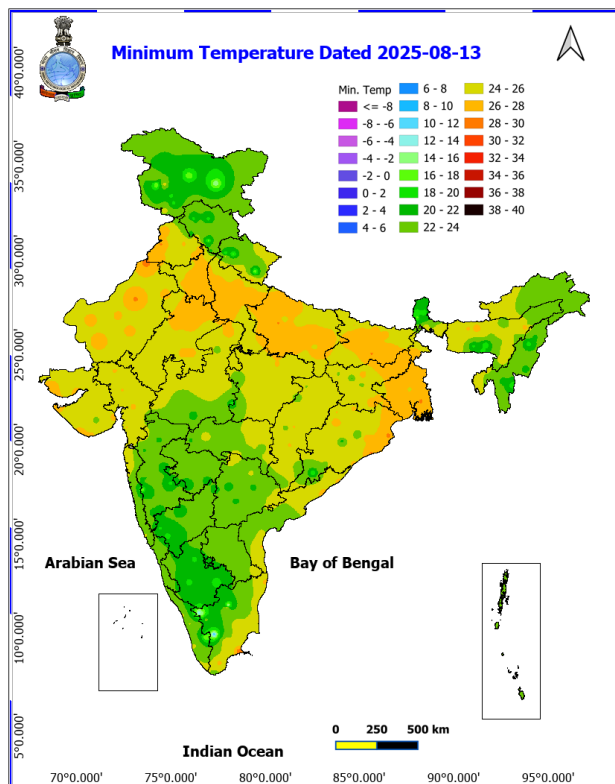
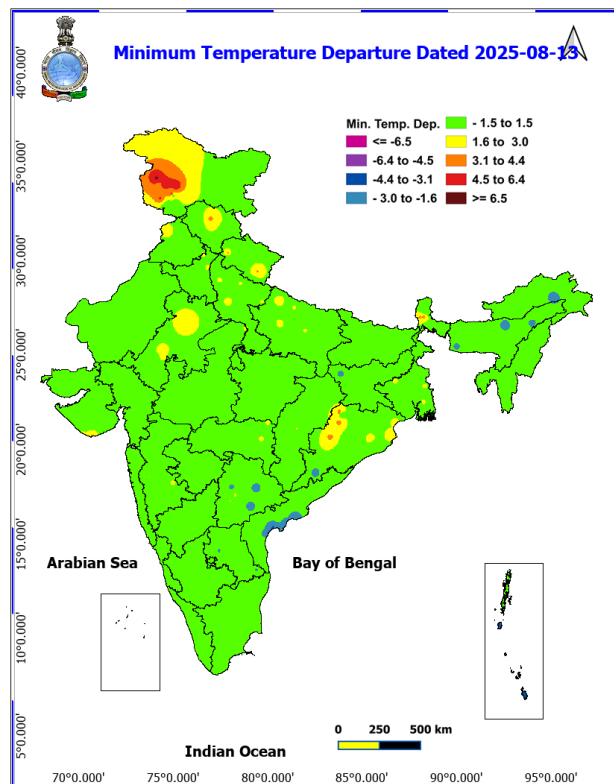
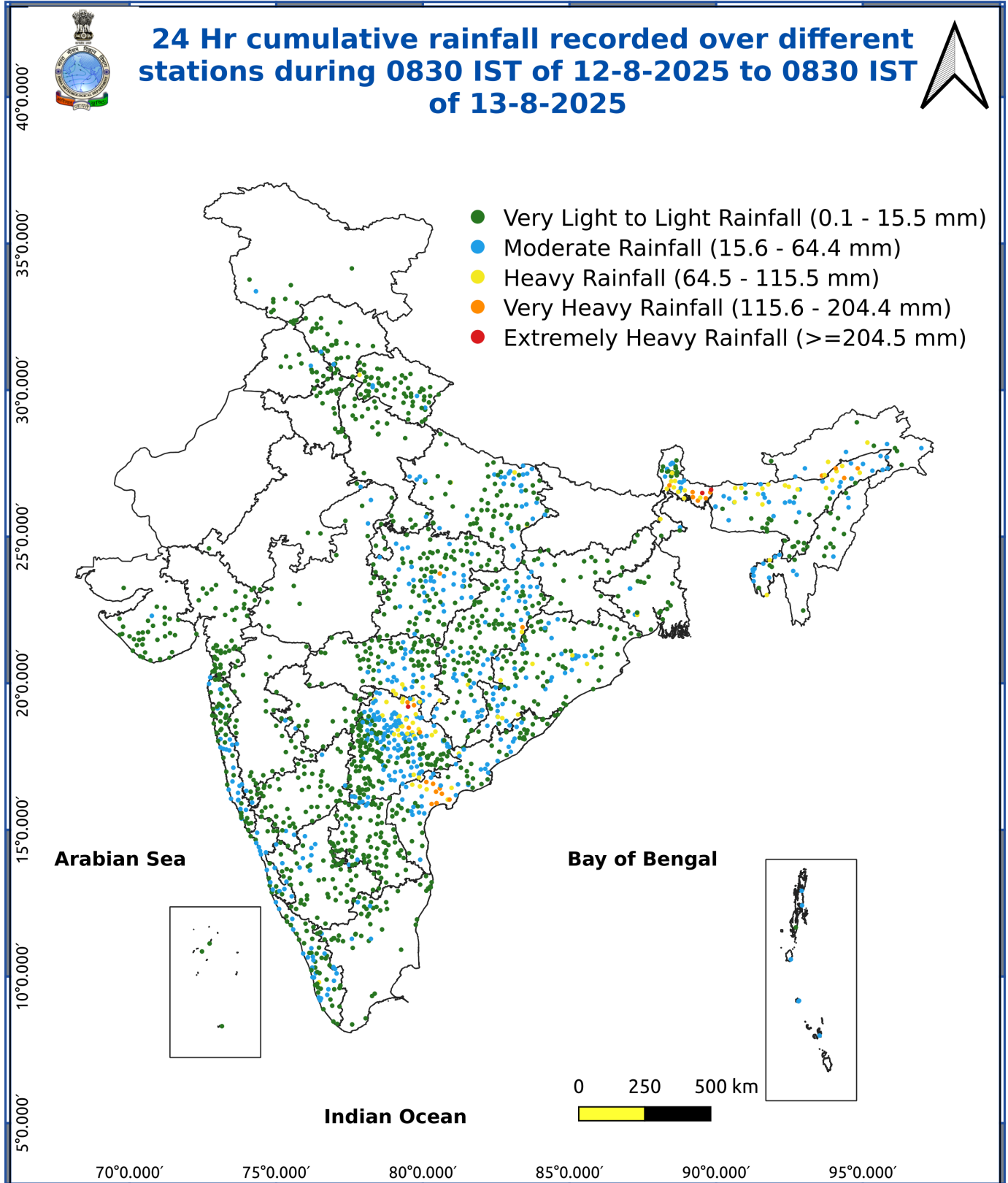


Fig. 4: Departure of Minimum Temp. Dated 2025-08-13





*Red color warning does not mean "Red Alert" Red color warning means "Take Action"

Forecast and warning for any day is valid from 0830 hours IST of day till 0830 hours IST of next day

For more details kindly visit <https://mausam.imd.gov.in> or contact 011-2434-4599

(Service to the nation since 1875)

Impact & Action Suggested due to

Extremely heavy rainfall at isolated places over Uttarakhand, Bihar, Coastal Andhra Pradesh & Yanam on 13th; Telangana on 13th & 14th August.

Very heavy rainfall over Jammu- Kashmir on 14th & 15th; Himachal Pradesh, East Madhya Pradesh, Odisha on 13th & 14th; Uttarakhand during 13th-17th; West Uttar Pradesh during 13th -15th; East Uttar Pradesh, Arunachal Pradesh, Rayalaseema, Sub-Himalayan West Bengal & Sikkim, Marathawada on 13th; Assam & Meghalaya on 13th & 16th; Coastal Andhra Pradesh & Yanam on 14th; Telangana during 15th-17th; Coastal Karnataka on 18th & 19th; West Madhya Pradesh on 13th, 15th & 16th; Vidarbha on 13th, 14th, 17th, 18th; Chhattisgarh during 13th-17th; Konkan & Goa, ghat areas of Madhya Maharashtra during 16th-19th August.

Impact Expected

Localized Flooding of roads, water logging in low lying areas and closure of underpasses mainly in urban areas of the above region.

Occasional reduction in visibility due to heavy rainfall.

Disruption of traffic in major cities due to water logging in roads leading to increased travel time.

Minor damage to kutcha roads.

Possibilities of damage to vulnerable structure.

Localized Landslides/Mudslides/landslips/mudslips/landsinks/mudsinks.

Damage to horticulture and standing crops in some areas due to inundation.

It may lead to riverine flooding in some river catchments (for riverine flooding please visit Web page of CWC)

Action Suggested

Check for traffic congestion on your route before leaving for your destination.

Follow any traffic advisories that are issued in this regard.

Avoid going to areas that face the water logging problems often.

Avoid staying in vulnerable structure.

Agromet advisories for various parts of the country

Inputs for Press Release

Agromet advisories for likely impact of Heavy / Heavy to Very Heavy Rainfall

(Based on the IBF and advisories issued by different AMFUs)

In **Sub-Himalayan West Bengal**, make provision to drain out excess water from rice, ginger, vegetable fields and fruit orchards in **Hill Zone** and *aman* paddy and vegetable fields in **Terai Zone**. Cover the chilli seedlings with plastic to protect them from heavy rains in **Terai Zone**.

In **Bihar**, make provisions to drain out excess water from standing crops such as maize, nurseries of onion, chilli, and

***Red color warning does not mean "Red Alert" Red color warning means "Take Action"**

Forecast and warning for any day is valid from 0830 hours IST of day till 0830 hours IST of next day

For more details kindly visit <https://mausam.imd.gov.in> or contact 011-2434-4599

(Service to the nation since 1875)

cauliflower in **North West Alluvial Plain Zone**; maize, finger millet, ragi, kodo, sava, china, etc. in **North East Alluvial Zone**.

In **Odisha**, make arrangements for draining out excess water from the fields of pulses, maize, groundnut and vegetables in **South Eastern Ghat region**.

In **Jammu and Kashmir**, do not allow water to stagnate in fields of maize, pulses, cowpea, bajra and vegetables in **Sub Tropical Zone**. Proper drainage should be ensured in the fields of paddy, maize, Pulses, horticultural and vegetable crops in **Intermediate Zone**.

In **Uttarakhand**, make necessary arrangements to drain out excess water from the fields of already sown / transplanted rice, sugarcane, maize, black gram, green gram, groundnut, pigeon pea, finger millet, soybean and vegetables in **Bhabar and Tarai Zone**; and from barnyard millet, finger millet, green gram and black gram in **Sub Humid Sub Tropic Zone**. In **Hill Zone**, strengthen the bunds to prevent surface runoff of water. Postpone sowing of vegetable pea till soil attains optimum moisture level. Maintain proper drainage channels in vegetable and crop fields. Undertake harvesting of matured capsicum fruits. Postpone sowing of vegetable pea until the soil attains optimum moisture, especially under excessive wet soil conditions.

In **Himachal Pradesh**, provide proper drainage channels in rice, maize, kidney beans, finger millet, apple, pomegranate and vegetable fields in **Sub Montane and Low Hills Sub Tropical Zone**; paddy, maize, pulses, plantation and vegetable crops in **High Hills Sub Temperate Wet Zone**; and maize, ginger, turmeric and vegetable fields in **Mid Hills Sub Humid Zone**.

In **Uttar Pradesh**, maintain proper drainage in fields of rice, pigeon pea, sugarcane and vegetable crops in **South Western Semi Arid Zone**, make necessary arrangements for drainage of excess water from the fields pigeon pea, chilli and onion in **Bundelkhand Zone**; autumn sugarcane, spring sugarcane, paddy, pigeon pea, maize, green gram, black gram and vegetables in South Western Semi-Arid Zone; and pigeon pea, soybean, maize, groundnut, green gram, black gram and barnyard millet in Eastern Plain Zone.

In **Madhya Pradesh**, provide adequate drainage in the fields of maize, soybean, blackgram, cotton, and pigeon pea in **Vindhyan Plateau Zone**; maize, soybean, cotton, sugarcane and vegetables in **Satpura Plateau Zone**; rice, soybean, maize, sugarcane and vegetables in **Central Narmada Valley Zone** and soybean, pigeon pea, cotton and vegetables in **Nimar Valley Zone**.

In **Chhattisgarh**, drain out excess water from rice nurseries, fields of soybean, pigeon pea, green gram, black gram, maize, sugarcane and vegetables in **Plain Zone**; fields of rice, minor millets, maize, pulses and oilseeds in **Bastar Plateau Zone** and fields of pigeon pea, vegetables and transplanted rice in **North Hill Zone**.

In **Arunachal Pradesh**, ensure proper drainage in rice, maize, finger millet, soybean, vegetables, and fruit orchards to avoid waterlogging. Provide strong support to fruit-bearing plants to prevent them from bending or breaking during heavy rains.

In **Assam**, to prevent waterlogging, ensure proper drainage in *Sali* rice, green gram and pigeon pea fields and banana orchards in **Lower Brahmaputra Valley Zone**; *Sali* rice and sugarcane fields in **North Bank Plain Zone** and *Sali* rice fields in **Upper Brahmaputra Valley Zone**.

In **Meghalaya**, ensure proper drainage in rice, maize, turmeric, chilli, okra and bitter gourd fields to prevent waterlogging. Provide staking/support to tall and fragile crops like banana, papaya, bottle gourd etc. to prevent lodging.

In **Tamil Nadu**, ensure proper drainage in sorghum fields to prevent waterlogging, especially in heavy soils and low-lying areas. Ensure proper drainage around the coconut plants to avoid root rot.

In **Andhra Pradesh**, provide adequate drainage in the fields of paddy, maize, groundnut, cotton, blackgram, greengram, and pigeon pea in **Krishna Godavari region**.

In **Telangana**, drain out excess water from rice nurseries and recently transplanted rice as well as from fields of cotton,

***Red color warning does not mean "Red Alert" Red color warning means "Take Action"**

Forecast and warning for any day is valid from 0830 hours IST of day till 0830 hours IST of next day

For more details kindly visit <https://mausam.imd.gov.in> or contact 011-2434-4599

(Service to the nation since 1875)

maize, red gram, soybean, sugarcane, and vegetables.

Livestock / Fishery

Keep the animals inside the shed during heavy rainfall and provide them balanced feed.

Store feed and fodder in a safe place to prevent spoilage.

Construct an outlet with proper netting around the ponds to drain out excess water, thereby preventing fish from escaping in case of overflow.

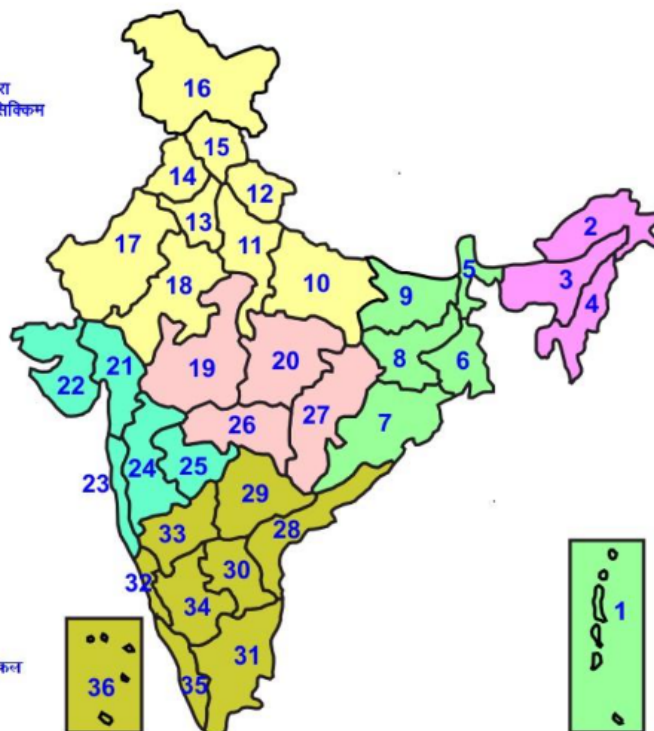
Agromet advisories for likely impact of Thunderstorm / Gusty Winds / Squally Winds

(Based on the IBF and advisories issued by different AMFUs)

Provide mechanical support to horticultural crops and staking or support to vegetables and young fruit plants / fruit-bearing plants to avoid lodging due to strong winds.

LEGENDS

- 1 अंडमान और निकोबार द्वीप समुह
- 2 अरुणाचल प्रदेश
- 3 असम और मेघालय
- 4 नागालैंड मनीपुर मीजोरम और त्रिपुरा
- 5 उप हिमालय पश्चिम बंगाल एवं सिक्किम
- 6 पश्चिम बंगाल
- 7 ओडिसा
- 8 झारखंड
- 9 बिहार
- 10 पूर्वी उत्तर प्रदेश
- 11 पश्चिम उत्तर प्रदेश
- 12 उत्तराखंड
- 13 हरियाणा चंडीगढ़ एवं दिल्ली
- 14 पंजाब
- 15 हिमाचल प्रदेश
- 16 जम्मू एवं कश्मीर एवं लद्दाख
- 17 पश्चिम राजस्थान
- 18 पूर्वी राजस्थान
- 19 पश्चिम मध्य प्रदेश
- 20 पूर्वी मध्य प्रदेश
- 21 गुजरात क्षेत्र
- 22 सौराष्ट्र एवं कच्छ
- 23 कोंकण एवं गोवा
- 24 मध्य महाराष्ट्र
- 25 मराठावाड़ा
- 26 विदर्भ
- 27 छत्तीसगढ़
- 28 तटीय आंध्र प्रदेश एवं यनम
- 29 तेलंगाना
- 30 रायलसीमा
- 31 तमिलनाडु, पुदुचेरी एवं कराईकल
- 32 तटिय कर्नाटक
- 33 आंतरिक उत्तरी कर्नाटक
- 34 आंतरिक दक्षिणी कर्नाटक
- 35 केरल एवं माहे
- 36 लक्षद्वीप



1. Andaman & Nicobar Islands
2. Arunachal Pradesh
3. Assam & Meghalaya
4. Nagaland, Manipur, Mizoram & Tripura
5. Sub-Himalayan West Bengal & Sikkim
6. Gangetic West Bengal
7. Orissa
8. Jharkhand
9. Bihar
10. East Uttar Pradesh
11. West Uttar Pradesh
12. Uttarakhand
13. Haryana, Chd & Delhi
14. Punjab
15. Himachal Pradesh
16. Jammu & Kashmir and Ladakh
17. West Rajasthan
18. East Rajasthan
19. West Madhya Pradesh
20. East Madhya Pradesh
21. Gujarat
22. Saurashtra
23. Konkan & Goa
24. Madhya Maharashtra
25. Marathawada
26. Vidharbha
27. Chhattisgarh
28. Coastal Andhra Pradesh & Yanam
29. Telangana
30. Rayalaseema
31. Tamilnadu, Puducherry & Karaikal
32. Coastal Karnataka
33. North Interior Karnataka
34. South Interior Karnataka
35. Kerala & Mahe
36. Lakshadweep

SPATIAL DISTRIBUTION (% of Stations reporting)


% Stations	Category	% Stations	Category
76-100	Widespread (WS/Most Places)	26-50	Scattered (SCT/ A Few Places)
51-75	Fairly Widespread (FWS/ Many Places)	1-25	Isolated (ISOL)


Subdivision Colour


- NO WARNING
- WATCH (BE UPDATED)
- ALERT (BE PREPARED TO TAKE ACTION)
- WARNING (TAKE ACTION)

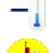
Probabilistic Forecast


Terms	Probability of Occurrence (%)
Unlikely	< 25
Likely	25 - 50
Very Likely	50 - 75
Most Likely	> 75


-  Heavy Rain


 Thunderstorm & Lightning


 Strong surface winds


 Cold Wave


 Hot & Humid


 Very Heavy Rain


 Hailstorm


 Heat Wave


 Cold Day


 Extremely Heavy Rain


 Dust Storm


 Hot Day

 Ground Frost

 Heavy Snow

 Dust Raising Winds

 Warm Night

 Fog

*Red color warning does not mean "Red Alert" Red color warning means "Take Action"

Forecast and warning for any day is valid from 0830 hours IST of day till 0830 hours IST of next day

For more details kindly visit <https://mausam.imd.gov.in> or contact 011-2434-4599

(Service to the nation since 1875)

LEGENDS

WARNING

WARNING (TAKE ACTION)
ALERT (BE PREPARED)
WATCH (BE UPDATED)
NO WARNING (NO ACTION)

Probabilistic Forecast

Terms	Probability of Occurrence (%)
Unlikely	< 25
Likely	25 - 50
Very Likely	50 - 75
Most Likely	> 75



Heavy: 64.5 to 115.5 mm/cm *
Very Heavy: 115.6 to 204.4 mm/cm *
Extremely Heavy: > 204.4 mm/cm *



When maximum temperature of a station reaches $\geq 40^{\circ}\text{C}$ for plains and $\geq 30^{\circ}\text{C}$ for hilly regions
(a) Based on Departure from normal

Heat Wave: Maximum Temperature Departure from normal 4.5°C to 6.4°C .
Severe Heat Wave: Maximum Temperature Departure from normal $\geq 6.5^{\circ}\text{C}$

(b). Based on Actual maximum temperature

Heat Wave: When actual maximum temperature $\geq 45^{\circ}\text{C}$.
Severe Heat Wave: When actual maximum temperature $\geq 47^{\circ}\text{C}$

(c). Criteria for heat wave for coastal stations

When maximum temperature departure is $> 4.5^{\circ}\text{C}$ from normal. Heat Wave may be described provided maximum temperature $\geq 37^{\circ}\text{C}$



When maximum temperature remains 40°C

Warm Night: When minimum temperature departure 4.5°C to 6.4°C .
Severe Warm Night: When minimum temperature departure $> 6.4^{\circ}\text{C}$.



When minimum temperature of a station $\leq 10^{\circ}\text{C}$ for plains and $\leq 0^{\circ}\text{C}$ for hilly regions.

(a). Based on departure

Cold Wave: Minimum Temperature Departure from normal -4.5°C to -6.4°C .
Severe Cold Wave: Minimum Temperature Departure from normal $\leq -6.5^{\circ}\text{C}$

(b) Based on actual Minimum Temperature (for Plains only)

Cold Wave: When Minimum Temperature is $\leq 4.0^{\circ}\text{C}$
Severe Cold Wave: When Minimum Temperature is $\leq 2.0^{\circ}\text{C}$

(c) For Coastal Stations

When Minimum Temperature departure is $\leq -4.5^{\circ}\text{C}$ & actual Minimum Temperature is $\leq 15^{\circ}\text{C}$



When minimum temperature of a station $\leq 10^{\circ}\text{C}$ for plains and $\leq 0^{\circ}\text{C}$ for hilly regions
Based on departure

Cold Day: Maximum Temperature Departure from normal -4.5°C to -6.4°C .
Severe Cold Day: Maximum Temperature Departure from normal $\leq -6.5^{\circ}\text{C}$



Phenomenon of small droplets suspended in air and the horizontal visibility $< 1\text{km}$

Moderate Fog: When the visibility between 500-200 metres
Dense Fog: when the visibility between 50-200 metres
Very Dense Fog: when the visibility < 50 metres



Sudden electrical discharges manifested by a flash of light (Lightning) and a sharp rumbling sound (thunder)



An ensemble of particles of dust or sand energetically lifted to great heights by a strong and turbulent wind.



Ice deposits on ground

Air temperature $\leq 4^{\circ}\text{C}$ (over Plains)



A strong wind that rises suddenly, lasts for at least 1 minute.

Moderate: Wind speed 52-61 kmph
Severe: Wind speed 62-87 kmph
Very Severe: Wind speed > 87 kmph



Effect of various waves in the sea over specific area

Rough to very rough: Wind speed 41-62 kmph (22-33 knots) & Wave height 2.5-6 metre
High to very high: Wind speed 63-117 kmph (34-63 knots) & Wave height 6-14 metre
Phenomenal: Wind speed > 117 kmph (> 63 knots) & Wave height > 14 metre



Cyclonic Storm: Wind speed 62-87 kmph (34-47 knots)

Severe Cyclonic Storm: Wind speed 88-117 kmph (48-63 knots)
Very Severe Cyclonic Storm: Wind speed 118-165 kmph (64-89 knots)
Extremely Severe Cyclonic Storm: Wind speed 166-220 kmph (90-119 knots)
Super Cyclone Storm: Wind speed > 220 kmph (> 119 knots)

*Red color warning does not mean "Red Alert" Red color warning means "Take Action"

Forecast and warning for any day is valid from 0830 hours IST of day till 0830 hours IST of next day

For more details kindly visit <https://mausam.imd.gov.in> or contact 011-2434-4599

(Service to the nation since 1875)