

2025-08-28

Time of Issue: 19:45:00 hours IST  
(Night)

## ALL INDIA WEATHER SUMMARY AND FORECAST BULLETIN

### Significant Weather Features

#### Weather Forecast and Warnings:

##### South Peninsular India:

**Heavy to very heavy rainfall with Extremely heavy rainfall** very likely at isolated places over Telangana on 28<sup>th</sup> August with heavy rainfall over Telangana during subsequent 2 days and heavy to very heavy rainfall over Coastal Karnataka during subsequent 6 days.

Isolated **heavy rainfall** likely over Kerala on 28<sup>th</sup> & 29<sup>th</sup> August & on 02<sup>nd</sup> & 03<sup>rd</sup> September; Interior Karnataka on 28<sup>th</sup> & 29<sup>th</sup> August; Coastal Andhra Pradesh & Yanam on 28<sup>th</sup> August & 03<sup>rd</sup> September with **very heavy rainfall over Interior Karnataka, Tamil Nadu and Kerala on 28<sup>th</sup> August.**

Light to moderate rainfall at most/many places accompanied with thunderstorm & lightning likely over the region during next 7 days.

##### East & Central India:

Isolated **heavy rainfall** likely over Chhattisgarh, East Madhya Pradesh during next 7 days; Sub-Himalayan West Bengal & Sikkim, Vidarbha during 28<sup>th</sup>-30<sup>th</sup>; West Madhya Pradesh during 28<sup>th</sup> August-01<sup>st</sup> September; Bihar during 30<sup>th</sup> August-01<sup>st</sup> September; Jharkhand on 30<sup>th</sup> August; Odisha during 31<sup>st</sup> August-03<sup>rd</sup> September with isolated **very heavy rainfall over Vidarbha, Sub-Himalayan West Bengal on 28<sup>th</sup> August.**

Light to moderate rainfall at most/many places accompanied with thunderstorm & lightning likely over the region during next 7 days.

##### West India:

**Isolated heavy rainfall** is very likely over Gujarat region, Konkan & Goa, Madhya Maharashtra during next 7 days with **very heavy rainfall** over Konkan, Goa, Marathawada on 28<sup>th</sup>; Ghat areas of Madhya Maharashtra on 28<sup>th</sup> & 29<sup>th</sup> August.

Light to moderate rainfall at most/many places very likely over the region during next 7 days.

##### Northwest India:

Isolated **heavy rainfall** likely to continue over Uttarakhand, Himachal Pradesh, East Rajasthan during next 7 days; Jammu & Kashmir, Punjab, Haryana during 29<sup>th</sup> August-02<sup>nd</sup> September; West Rajasthan on 30<sup>th</sup> & 31<sup>st</sup> August; West Uttar Pradesh during 31<sup>st</sup> August-02<sup>nd</sup> September; East Uttar Pradesh on 01<sup>st</sup> & 02<sup>nd</sup> September with **isolated very heavy rainfall very likely over Uttarakhand on 28<sup>th</sup> & 29<sup>th</sup> August, 01<sup>st</sup> & 02<sup>nd</sup> September and East Rajasthan on 31<sup>st</sup> August.**

Light/moderate rainfall at most/many places over Northwest India and accompanied with thunderstorm & lightning likely over Uttar Pradesh, Himachal Pradesh on 28<sup>th</sup>; West Rajasthan on 28<sup>th</sup> & 29<sup>th</sup> August; Jammu-Kashmir-Ladakh-Gilgit-Baltistan-Muzaffarabad, Uttarakhand during next 7 days.

##### Northeast India:

Isolated **heavy rainfall** likely to continue over Arunachal Pradesh during 28<sup>th</sup>-30<sup>th</sup> August; Assam & Meghalaya, Nagaland, Manipur, Mizoram & Tripura on 28<sup>th</sup> & 29<sup>th</sup> August, 01<sup>st</sup> & 02<sup>nd</sup> September.

Light/moderate rainfall at many places accompanied with thunderstorm & lightning likely during next 5 days.

**\*Red color warning does not mean "Red Alert" Red color warning means "Take Action"**

Forecast and warning for any day is valid from 0830 hours IST of day till 0830 hours IST of next day

For more details kindly visit <https://mausam.imd.gov.in> or contact 011-2434-4599

(Service to the nation since 1875)

#### Main Weather Observations:

❖ **Rainfall distribution** (from 0830 hours IST to 1730 hours IST of today): **at most places** over North Interior Karnataka, Vidarbha, Marathwada, Gangetic West Bengal, Telangana, Arunachal Pradesh, Coastal Karnataka, South Interior Karnataka, Kerala & Mahe and Lakshadweep ; **at many places** over West Uttar Pradesh, Odisha, Sub-Himalayan West Bengal & Sikkim, Uttarakhand, Konkan & Goa , Madhya Maharashtra , Himachal Pradesh, West Madhya Pradesh, Assam & Meghalaya, Jharkhand, East Uttar Pradesh, Nagaland, Manipur, Mizoram & Tripura, Haryana Chandigarh & Delhi, Punjab, Gujarat Region, West Rajasthan, East Rajasthan, Andaman & Nicobar Islands, Saurashtra & Kutch, Chhattisgarh, Coastal Andhra Pradesh & Yanam, Rayalaseema, East Madhya Pradesh and Tamilnadu Puducherry & Karaikal; **Dry** over rest of the country.

❖ **Significant rainfall recorded(in cm)** (from 0830 hours IST to 1730 hours IST of today): **Telangana:** Ramareddy (dist Kamareddy) 17, Bodhan (dist Nizamabad) 16, Sirkonda (dist Nizamabad) 16, Dharpally (dist Nizamabad) 12, Makloor (dist Nizamabad) 12, Bheemgal (dist Nizamabad) 12, Nasrullabad (dist Kamareddy) 11, Dichpally (dist Nizamabad) 11, Mudhole (dist Nirmal) 11, Lokeshwaram ( dist Nirmal) 10, Gannaram (dist Nizamabad) 10, Kotgiri (dist Nizamabad) 10, Pembi ( dist Nirmal) 9, Nizamabad (dist Nizamabad) 9, Gundi ( dist Karimnagar) 9, Kathapapur ( dist Jagtial) 8, Ramgiri (dist Peddapalli) 8, Talamadugu ( dist Adilabad) 7 ; **East Rajasthan:** Banshwara 14; **Gujarat Region:** Chhotaudaipur 8, Dahod 8; **Coastal Karnataka:** Mangalore (bajpe) AP (dist Dakshina Kannada) 6; **Assam & Meghalaya:** Cherrapunji (dist East Khasi Hills) 5; **Kerala & Mahe:** Kochi (cial) (dist Ernakulam) 5, Cannanore (kannur) (dist Kannur) 4, Kozhikode (calicut) (dist Kozhikode), Palakkad (palghat) (dist Palakkad) 3 Each; **Marathwada:** Udgir (dist Latur) 5; **Vidarbha:** Gondia (dist Gondia) 4; **West Madhya Pradesh:** Raisen (dist Raisen) 4; **Tamilnadu Puducherry & Karaikal:** Valparai(upasitri) (dist Coimbatore) 3; **East Madhya Pradesh:** Chhindwara-obs (dist Chhindwara) 3; **West Uttar Pradesh:** Bulandshahr (dist Bulandshahr) 3.

❖ **Heavy Rainfall observed** (from 0830 hours IST to 1730 hours IST of today): **Very Heavy rainfall** at isolated places over Telangana and East Rajasthan; **Heavy rainfall** at isolated places over Gujarat Region.

❖ **Minimum Temperature Departures (as on 28-08-2025):** **markedly above normal(> 5.1°C)** at many places over East Madhya Pradesh; at few places over Jammu-KashmirLadakh-Gilgit-Baltistan-Muzaffarabad and West Madhya Pradesh; at isolated places over Assam & Meghalaya, Bihar, East Uttar Pradesh, Himachal Pradesh and Chhattisgarh. **appreciably above normal(3.1°C to 5.0°C)** at isolated places over Sub Himalayan West Bengal & Sikkim, Odisha, Gujarat Region, Saurashtra & Kutch and Vidarbha. **above normal(1.6°C to 3.0°C)** at few places over Andaman & Nicobar Islands, Nagaland, Manipur, Mizoram & Tripura, West Uttar Pradesh, Uttarakhand, Haryana-Chandigarh-Delhi, Madhya Maharashtra and Tamil Nadu, Puducherry & Karaikal; at isolated places over Gangetic West Bengal, West Rajasthan and Konkan & Goa. **near normal(-1.5°C to 1.5°C)** at many places over Kerala & Mahe and Lakshadweep; at most places over Arunachal Pradesh, Jharkhand, Punjab, East Rajasthan, Marathwada, Coastal Andhra Pradesh & Yanam, Rayalaseema, Coastal Karnataka, North Interior Karnataka and South Interior Karnataka; at few places over Telangana. **The lowest minimum temperature** of 18.0°C is reported at HALFLONG (ASSAM) over the Plains of India.

❖ **Maximum Temperature Departures (as on 28-08-2025):** **markedly above normal(> 5.1°C)** at few places over Jammu-KashmirLadakh-Gilgit-Baltistan-Muzaffarabad. **appreciably above normal(3.1°C to 5.0°C)** at isolated places over Assam & Meghalaya, Odisha and Tamil Nadu, Puducherry & Karaikal. **above normal(1.6°C to 3.0°C)** at few places over Himachal Pradesh, West Rajasthan and West Madhya Pradesh; at isolated places over Bihar, East Uttar Pradesh, West Uttar Pradesh, Uttarakhand, East Rajasthan, East Madhya Pradesh, Gujarat Region, Vidarbha and Chhattisgarh. **near normal(-1.5°C to 1.5°C)** at many places over Andaman & Nicobar Islands, Gangetic West Bengal, Madhya Maharashtra, South Interior Karnataka and Lakshadweep; at most places over Nagaland, Manipur, Mizoram & Tripura, Sub Himalayan West Bengal & Sikkim, Haryana-Chandigarh-Delhi, Punjab, Saurashtra & Kutch and Konkan & Goa; at few places over Jharkhand, Coastal Andhra Pradesh & Yanam and Rayalaseema; at isolated places over Marathwada, North Interior Karnataka and Kerala & Mahe. **The highest maximum temperature** of 38.7°C is reported at JAISALMER (RAJASTHAN).

**\*Red color warning does not mean "Red Alert" Red color warning means "Take Action"**

**Forecast and warning for any day is valid from 0830 hours IST of day till 0830 hours IST of next day**

**For more details kindly visit <https://mausam.imd.gov.in> or contact 011-2434-4599**

**(Service to the nation since 1875)**

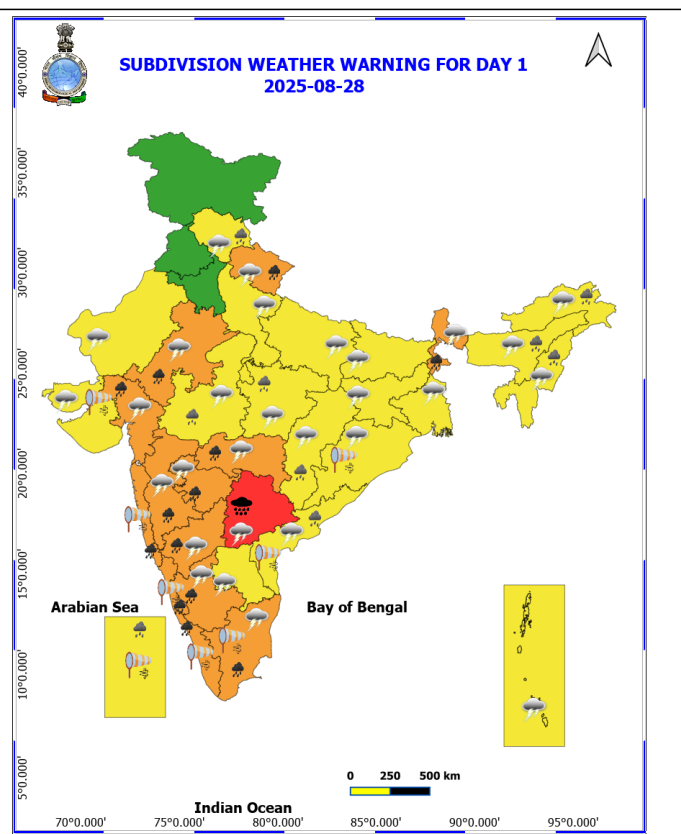
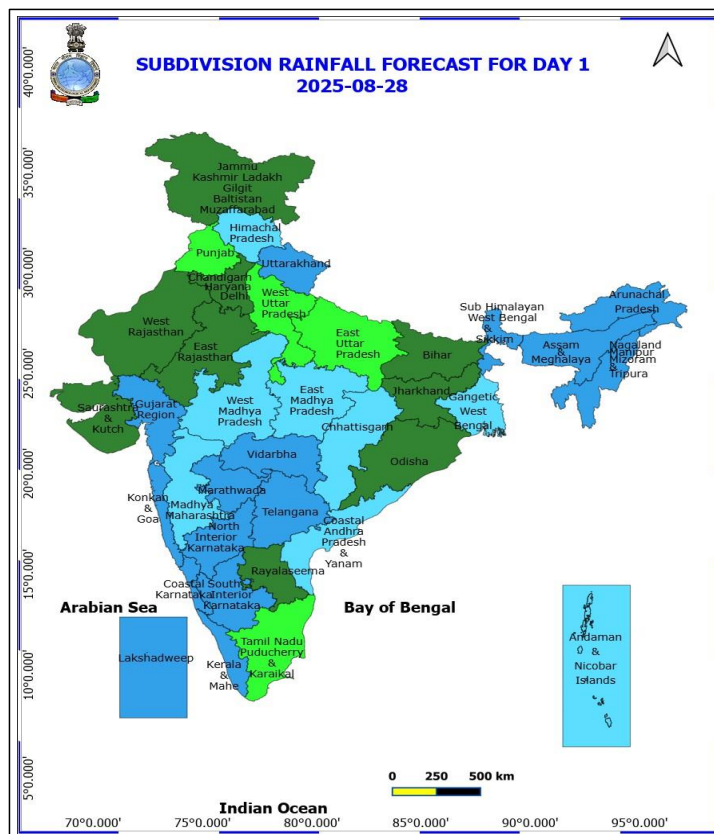


#### Meteorological Analysis (Based on 1730 hours IST)

- ♦ The **low-pressure area** over central parts of Chhattisgarh & neighbourhood now move west northwest and lay over southeast Madhya Pradesh & neighbourhood at 1730 hrs IST of today, the 28<sup>th</sup> August 2025. The associated cyclonic circulation extended upto 5.8 km above mean sea level tilting southwestwards with height.
- ♦ The **monsoon trough** now passes through Bikaner, Kota, Guna, centre of **low-pressure area** over southeast Madhya Pradesh & neighbourhood, Bilaspur, Sambalpur, Puri and thence to east-southeastwards to central Bay of Bengal.
- ♦ The **Western Disturbance** as a **cyclonic circulation** over north Pakistan & adjoining Punjab extending upto 5.8 km above mean sea level persists.
- ♦ The **shear zone** roughly along Lat. 17°N over the Indian region between 4.5 & 5.8 km above mean sea level persists.
- ♦ The **upper air cyclonic circulation** over northeast Assam & neighbourhood extending upto 1.5 km above mean sea level persists.

#### Weather Outlook for subsequent 3 days

- ♦ Scattered to Fairly widespread rainfall likely over northern, western India, western peninsular and eastern India.



## 28 August (Day 1)

- ❖ **Heavy to Very Heavy Rainfall with isolated Extremely Heavy Rainfall** very likely at isolated places over Telangana.
- ❖ **Heavy to Very Heavy Rainfall** very likely at isolated places over East Rajasthan, Gujarat Region, Interior Karnataka, Kerala & Mahe, Konkan & Goa, Maharashtra, Sub Himalayan West Bengal & Sikkim, Tamil Nadu Puducherry & Karaikal, Coastal Karnataka and Uttarakhand.
- ❖ **Heavy Rainfall** very likely at isolated places over Arunachal Pradesh, Assam & Meghalaya, Chhattisgarh, Coastal Andhra Pradesh, Himachal Pradesh, Lakshadweep, Madhya Pradesh and Nagaland, Manipur, Mizoram and Tripura.
- ❖ **Thunderstorm accompanied with lightning & gusty winds(30-40kmph)** very likely at isolated places over Andaman & Nicobar Islands, Bihar, Interior Karnataka, Jharkhand and Telangana.
- ❖ **Thunderstorm accompanied with Lightning** very likely at isolated places over Andhra Pradesh, Arunachal Pradesh, Assam & Meghalaya, Chhattisgarh, Gujarat State, Himachal Pradesh, Madhya Pradesh, Maharashtra, Nagaland, Manipur, Mizoram and Tripura, Odisha, Rajasthan, Tamil Nadu Puducherry & Karaikal, Uttar Pradesh, Uttarakhand and West Bengal & Sikkim.
- ❖ **Strong Surface Winds** very likely at isolated places over Coastal Andhra Pradesh, Coastal Karnataka, Kerala & Mahe, Konkan & Goa, Lakshadweep, Odisha, Saurashtra & Kutch and Tamil Nadu Puducherry & Karaikal.
- ❖ **Squally wind with speed reaching 45 kmph to 55 kmph gusting to 65 kmph** is likely to prevail along and off Somalia, Oman coasts, most parts of westcentral Arabian sea, adjoining & some parts of southwest, eastcentral Arabian Sea; Squally weather with wind speed reaching 40 - 50 kmph gusting to 60 kmph likely to prevail along and off south Gujarat, Konkan, Goa, Karnataka, Kerala coasts, Lakshadweep, Comorin areas, and most parts of eastcentral Arabian Sea; along and off north and adjoining south Andhra Pradesh, Odisha, West Bengal, Bangladesh

**\*Red color warning does not mean "Red Alert" Red color warning means "Take Action"**

**Forecast and warning for any day is valid from 0830 hours IST of day till 0830 hours IST of next day**

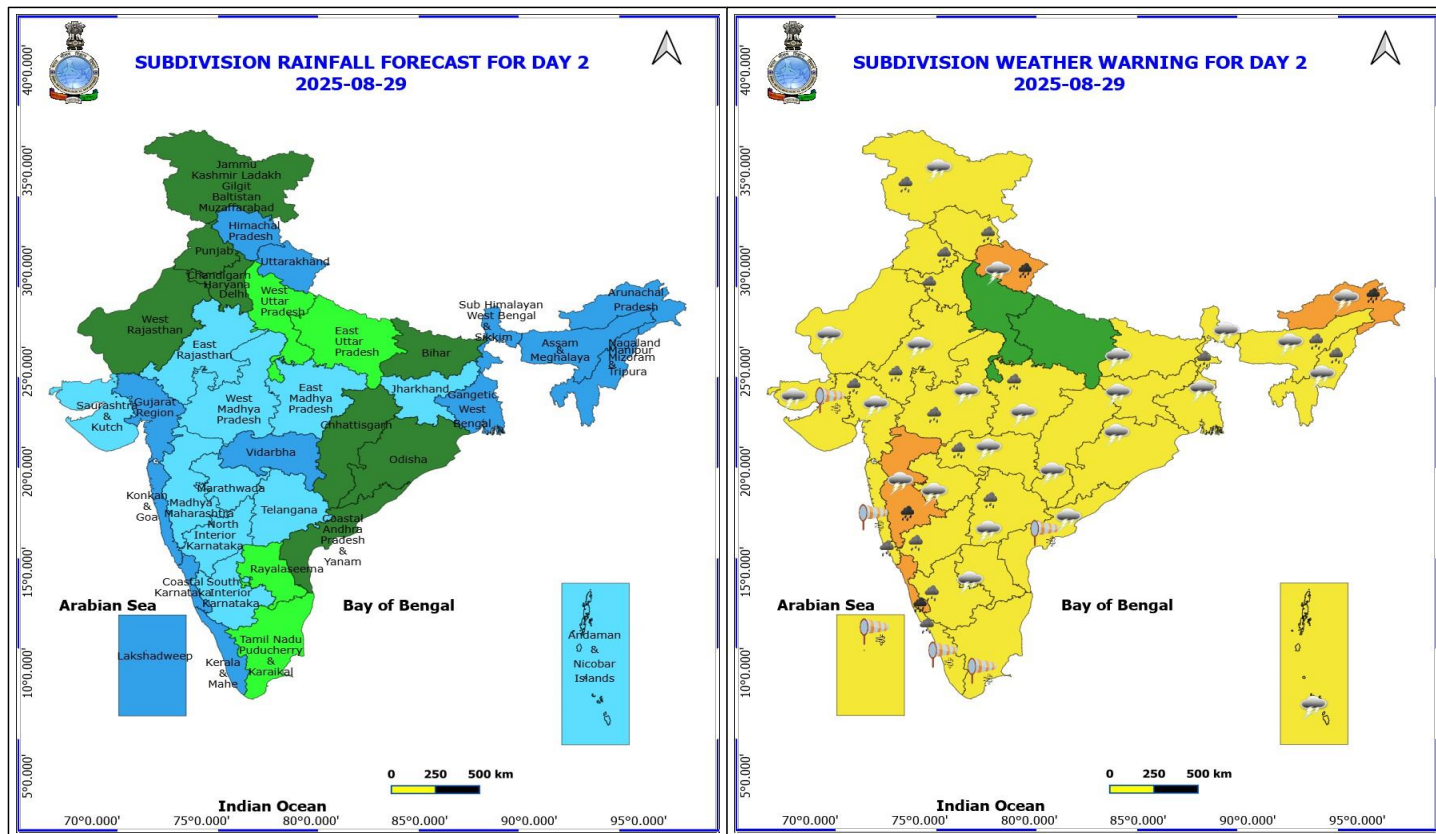
**For more details kindly visit <https://mausam.imd.gov.in> or contact 011-2434-4599**

**(Service to the nation since 1875)**



coasts, over north Bay of Bengal & most parts of central Bay of Bengal, over most parts of southwest Bay of Bengal and adjoining southeast Bay of Bengal, off Sri Lanka coast, over Gulf of Mannar.





## 29 August (Day 2)

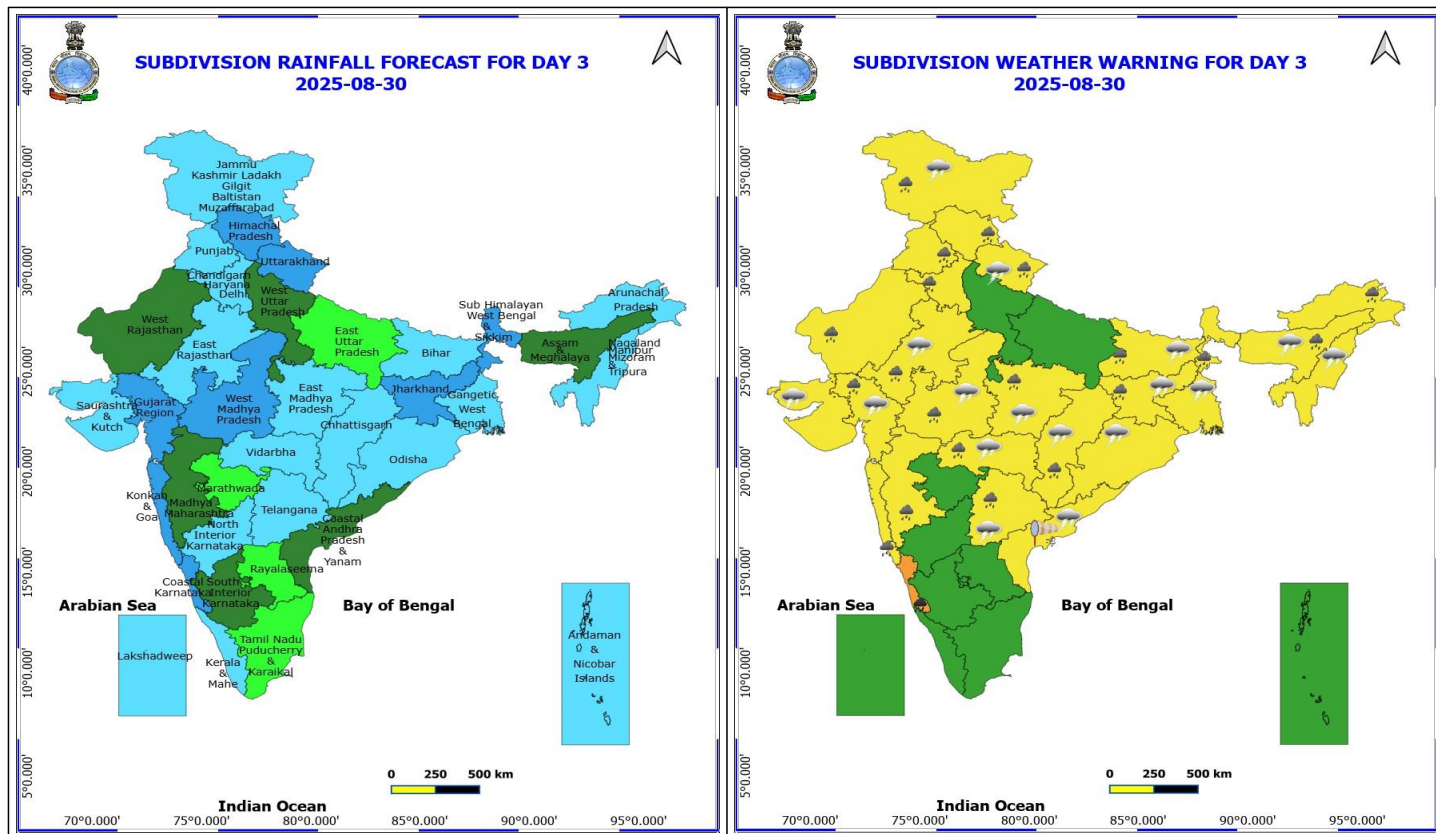
- ❖ **Heavy to Very Heavy Rainfall** very likely at isolated places over Arunachal Pradesh, Coastal Karnataka, Madhya Maharashtra and Uttarakhand.
- ❖ **Heavy Rainfall** very likely at isolated places over Assam & Meghalaya, East Rajasthan, Gujarat Region, Haryana, Chandigarh & Delhi, Himachal Pradesh, Interior Karnataka, Jammu-Kashmir-Ladakh-Gilgit-Baltistan-Muzaffarabad, Kerala & Mahe, Konkan & Goa, Madhya Pradesh, Nagaland, Manipur, Mizoram and Tripura, Punjab, Sub Himalayan West Bengal & Sikkim, Telangana and Vidarbha.
- ❖ **Thunderstorm accompanied with lightning & gusty winds(30-40kmph)** very likely at isolated places over Andaman & Nicobar Islands, Bihar, Jammu-Kashmir-Ladakh-Gilgit-Baltistan-Muzaffarabad, Jharkhand and Telangana.
- ❖ **Thunderstorm accompanied with Lightning** very likely at isolated places over Andhra Pradesh, Arunachal Pradesh, Assam & Meghalaya, Chhattisgarh, Gujarat State, Madhya Pradesh, Maharashtra, Nagaland, Manipur, Mizoram and Tripura, Odisha, Rajasthan, Uttarakhand and West Bengal & Sikkim.
- ❖ **Strong Surface Winds** very likely at isolated places over Coastal Andhra Pradesh, Kerala & Mahe, Konkan & Goa, Lakshadweep, Saurashtra & Kutch and Tamil Nadu Puducherry & Karaikal.
- ❖ **Squally wind with speed reaching 45 kmph to 55 kmph gusting to 65 kmph** is likely to prevail along and off Somalia, Oman coasts, most parts of westcentral Arabian sea, adjoining & some parts of southwest, eastcentral Arabian Sea; Squally weather with wind speed reaching 40 - 50 kmph gusting to 60 kmph likely to prevail along and off south Gujarat, Konkan, Goa, Karnataka, Kerala coasts, Lakshadweep, Comorin areas, and most parts of eastcentral Arabian Sea; along and off north and adjoining south Andhra Pradesh coasts, over most parts of central, southwest Bay of Bengal and adjoining southeast Bay of Bengal, off Sri Lanka coast, over Gulf of Mannar.

**\*Red color warning does not mean "Red Alert" Red color warning means "Take Action"**

Forecast and warning for any day is valid from 0830 hours IST of day till 0830 hours IST of next day

For more details kindly visit <https://mausam.imd.gov.in> or contact 011-2434-4599

(Service to the nation since 1875)



### 30 August (Day 3)

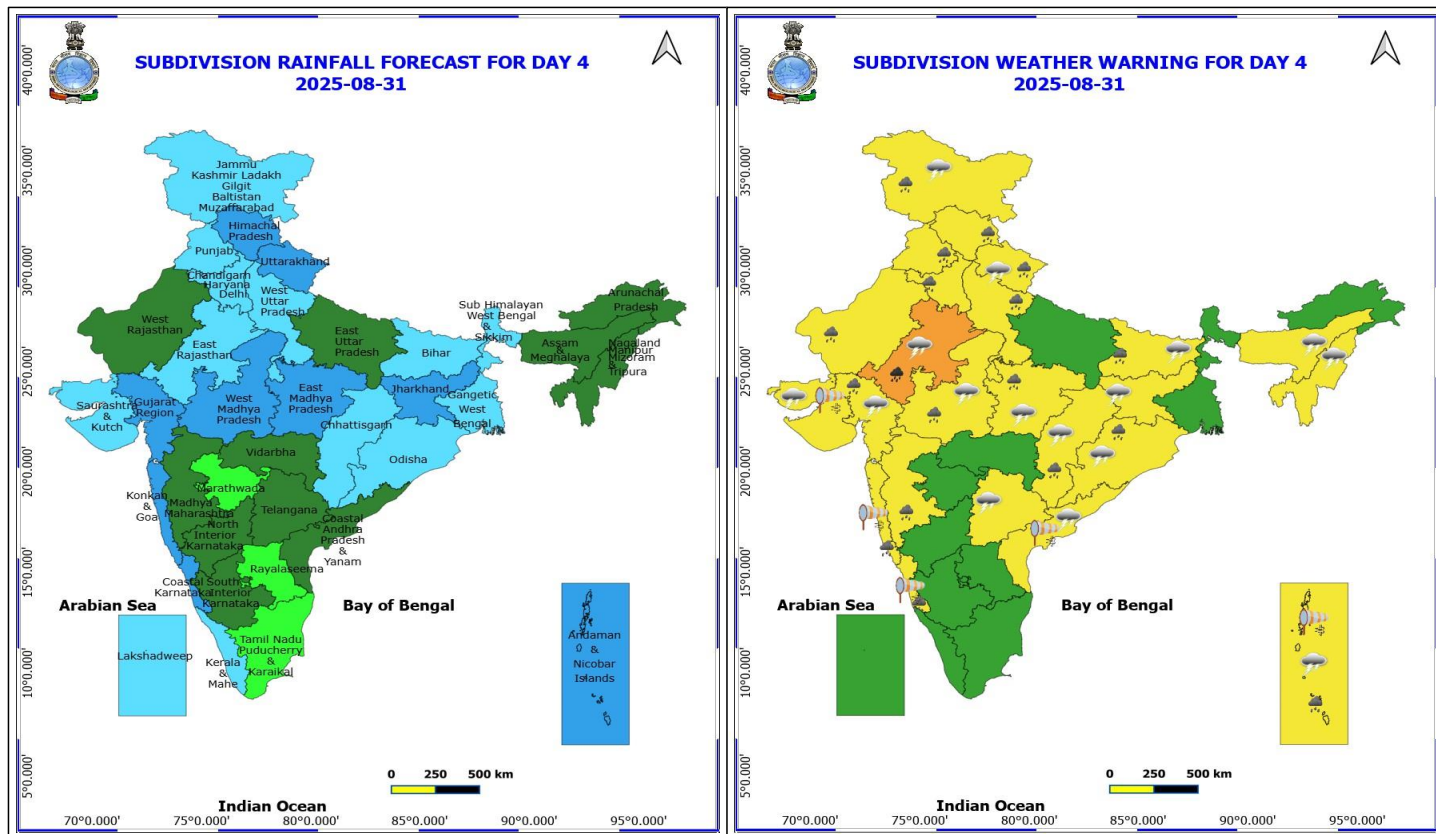
- ❖ **Heavy to Very Heavy Rainfall** very likely at isolated places over Coastal Karnataka.
- ❖ **Heavy Rainfall** very likely at isolated places over Arunachal Pradesh, Assam & Meghalaya, Bihar, Chhattisgarh, Gujarat Region, Haryana, Chandigarh & Delhi, Himachal Pradesh, Jammu-Kashmir-Ladakh-Gilgit-Baltistan-Muzaffarabad, Jharkhand, Konkan & Goa, Madhya Maharashtra, Madhya Pradesh, Punjab, Rajasthan, Sub Himalayan West Bengal & Sikkim, Telangana, Uttarakhand and Vidarbha.
- ❖ **Thunderstorm accompanied with lightning & gusty winds(30-40kmph)** very likely at isolated places over Bihar, Jammu-Kashmir-Ladakh-Gilgit-Baltistan-Muzaffarabad, Jharkhand and Telangana.
- ❖ **Thunderstorm accompanied with Lightning** very likely at isolated places over Assam & Meghalaya, Chhattisgarh, Coastal Andhra Pradesh, East Rajasthan, Gangetic West Bengal, Gujarat State, Madhya Pradesh, Nagaland, Manipur, Mizoram and Tripura, Odisha, Uttarakhand and Vidarbha.
- ❖ **Strong Surface Winds** very likely at isolated places over Coastal Andhra Pradesh.
- ❖ **Squally wind with speed reaching 45 kmph to 55 kmph gusting to 65 kmph** is likely to prevail along and off Somalia, Oman coasts, most parts of westcentral Arabian sea, adjoining & some parts of southwest, eastcentral Arabian Sea; Squally weather with wind speed reaching 40 - 50 kmph gusting to 60 kmph likely to prevail over some parts of eastcentral Arabian Sea, along and off north Andhra Pradesh coast, off south Odisha coast, over few parts of northwest, southeast Bay of Bengal, many parts of westcentral Bay of Bengal, most parts of southwest Bay of Bengal, off Sri Lanka coast, over Gulf of Mannar.

\*Red color warning does not mean "Red Alert" Red color warning means "Take Action"

Forecast and warning for any day is valid from 0830 hours IST of day till 0830 hours IST of next day

For more details kindly visit <https://mausam.imd.gov.in> or contact 011-2434-4599

(Service to the nation since 1875)



### 31 August (Day 4)

- ❖ **Heavy to Very Heavy Rainfall** likely at isolated places over East Rajasthan.
- ❖ **Heavy Rainfall** likely at isolated places over Andaman & Nicobar Islands, Bihar, Chhattisgarh, Coastal Karnataka, Gujarat Region, Haryana, Chandigarh & Delhi, Himachal Pradesh, Jammu-Kashmir-Ladakh-Gilgit-Baltistan-Muzaffarabad, Konkan & Goa, Madhya Maharashtra, Madhya Pradesh, Odisha, Punjab, Uttarakhand, West Rajasthan and West Uttar Pradesh.
- ❖ **Thunderstorm accompanied with lightning & gusty winds(30-40kmph)** likely at isolated places over Andaman & Nicobar Islands, Bihar, Jammu-Kashmir-Ladakh-Gilgit-Baltistan-Muzaffarabad, Jharkhand and Telangana.
- ❖ **Thunderstorm accompanied with Lightning** likely at isolated places over Assam & Meghalaya, Chhattisgarh, Coastal Andhra Pradesh, East Rajasthan, Gujarat State, Madhya Pradesh, Nagaland, Manipur, Mizoram and Tripura, Odisha and Uttarakhand.
- ❖ **Strong Surface Winds** likely at isolated places over Andaman & Nicobar Islands, Coastal Andhra Pradesh, Coastal Karnataka, Konkan & Goa and Saurashtra & Kutch.

**No Fishermen Warning**

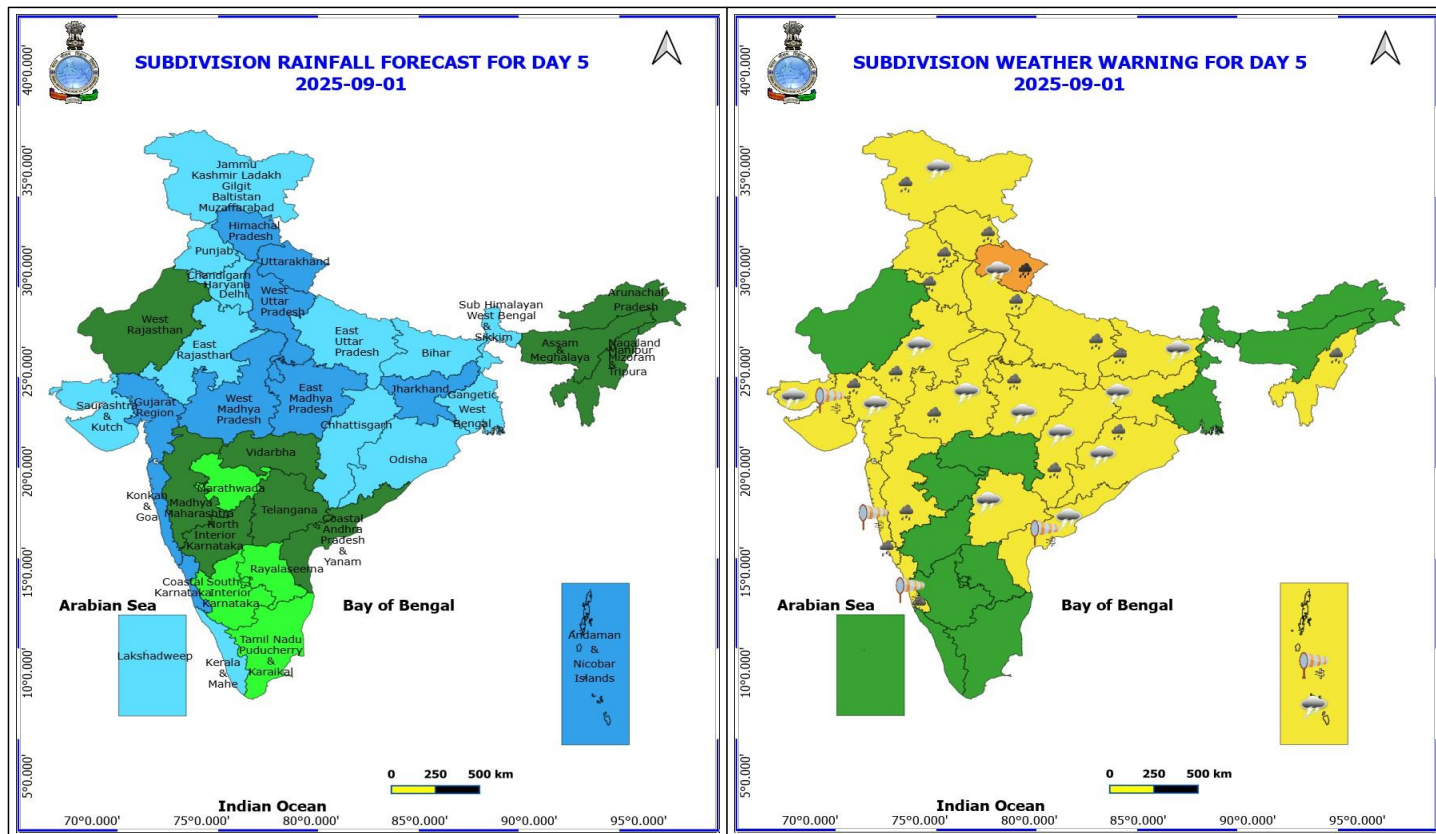
**\*Red color warning does not mean "Red Alert" Red color warning means "Take Action"**

Forecast and warning for any day is valid from 0830 hours IST of day till 0830 hours IST of next day

For more details kindly visit <https://mausam.imd.gov.in> or contact 011-2434-4599

(Service to the nation since 1875)





## 1 September (Day 5)

- ❖ **Heavy to Very Heavy Rainfall** likely at isolated places over Uttarakhand.
- ❖ **Heavy Rainfall** likely at isolated places over Bihar, Chhattisgarh, Coastal Karnataka, East Rajasthan, Gujarat Region, Haryana, Chandigarh & Delhi, Himachal Pradesh, Jammu-Kashmir-Ladakh-Gilgit-Baltistan-Muzaffarabad, Konkan & Goa, Madhya Maharashtra, Madhya Pradesh, Nagaland, Manipur, Mizoram and Tripura, Odisha, Punjab and Uttar Pradesh.
- ❖ **Thunderstorm accompanied with lightning & gusty winds(30-40kmph)** likely at isolated places over Andaman & Nicobar Islands, Bihar, Jammu-Kashmir-Ladakh-Gilgit-Baltistan-Muzaffarabad, Jharkhand and Telangana.
- ❖ **Thunderstorm accompanied with Lightning** likely at isolated places over Chhattisgarh, Coastal Andhra Pradesh, East Rajasthan, Gujarat State, Madhya Pradesh, Odisha and Uttarakhand.
- ❖ **Strong Surface Winds** likely at isolated places over Andaman & Nicobar Islands, Coastal Andhra Pradesh, Coastal Karnataka, Konkan & Goa and Saurashtra & Kutch.

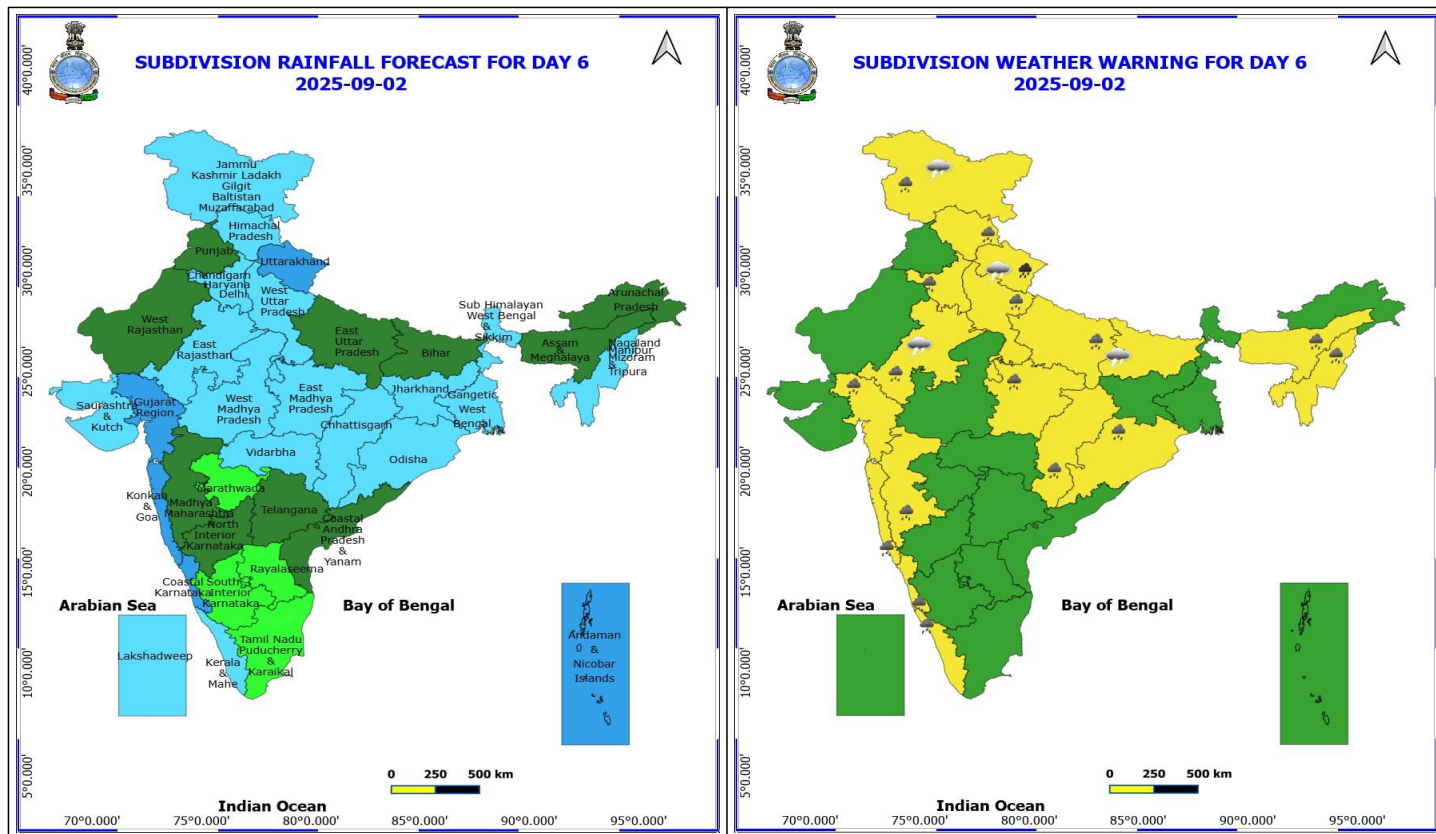
**No Fishermen Warning**

**\*Red color warning does not mean "Red Alert" Red color warning means "Take Action"**

Forecast and warning for any day is valid from 0830 hours IST of day till 0830 hours IST of next day

For more details kindly visit <https://mausam.imd.gov.in> or contact 011-2434-4599

(Service to the nation since 1875)



## 2 September (Day 6)

- ❖ **Heavy to Very Heavy Rainfall** likely at isolated places over Uttarakhand.
- ❖ **Heavy Rainfall** likely at isolated places over Assam & Meghalaya, Chhattisgarh, Coastal Karnataka, East Madhya Pradesh, East Rajasthan, Gujarat Region, Haryana, Chandigarh & Delhi, Himachal Pradesh, Jammu-Kashmir-Ladakh-Gilgit-Baltistan-Muzaffarabad, Kerala & Mahe, Konkan & Goa, Madhya Maharashtra, Nagaland, Manipur, Mizoram and Tripura, Odisha and Uttar Pradesh.
- ❖ **Thunderstorm accompanied with lightning & gusty winds(30-40kmph)** likely at isolated places over Bihar and Jammu-Kashmir-Ladakh-Gilgit-Baltistan-Muzaffarabad.
- ❖ **Thunderstorm accompanied with Lightning** likely at isolated places over East Rajasthan and Uttarakhand.

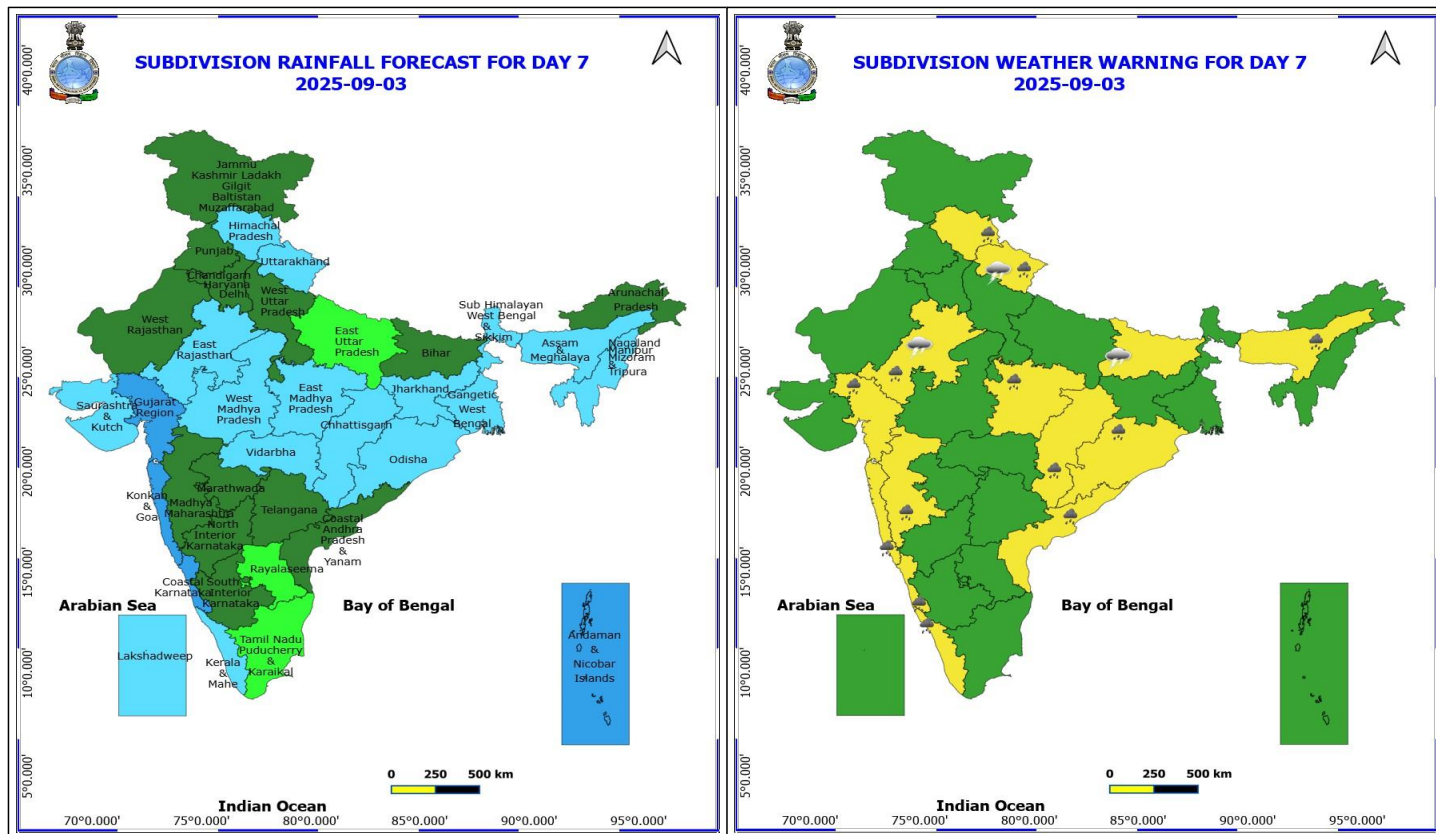
**No Fishermen Warning**

**\*Red color warning does not mean "Red Alert" Red color warning means "Take Action"**

Forecast and warning for any day is valid from 0830 hours IST of day till 0830 hours IST of next day

For more details kindly visit <https://mausam.imd.gov.in> or contact 011-2434-4599

(Service to the nation since 1875)



### 3 September (Day 7)

- ❖ **Heavy Rainfall** likely at isolated places over Assam & Meghalaya, Chhattisgarh, Coastal Andhra Pradesh, Coastal Karnataka, East Madhya Pradesh, East Rajasthan, Gujarat Region, Himachal Pradesh, Kerala & Mahe, Konkan & Goa, Madhya Maharashtra, Odisha and Uttarakhand.
- ❖ **Thunderstorm accompanied with lightning & gusty winds(30-40kmph)** likely at isolated places over Bihar.
- ❖ **Thunderstorm accompanied with Lightning** likely at isolated places over East Rajasthan and Uttarakhand.

**No Fishermen Warning**

**\*Red color warning does not mean "Red Alert" Red color warning means "Take Action"**

Forecast and warning for any day is valid from 0830 hours IST of day till 0830 hours IST of next day

For more details kindly visit <https://mausam.imd.gov.in> or contact 011-2434-4599

(Service to the nation since 1875)



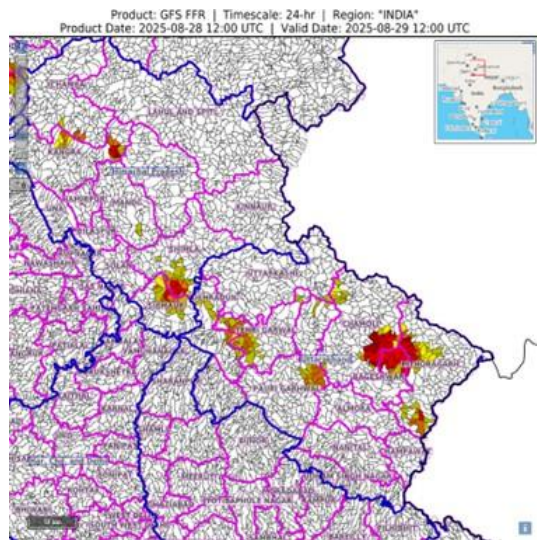
## Flash Flood Warnings

24 hours Outlook for the Flash Flood Risk (FFR) till 1730 IST of 29-08-2025 :

**Low to Moderate flash flood risk** likely over few watersheds & neighbourhoods of following Met Sub-divisions during next 24 hours.

**Himachal Pradesh** - Kangra, Shimla and Sirmour districts.  
**Uttarakhand** – Chamoli, Pauri Garwal, Tehri Garwal, Dehradun and Pithoragarh districts.

Surface runoff/ Inundation may occur at some fully saturated soils & low-lying areas over Area of Concern (AoC) as shown in map due to expected rainfall occurrence in next 24 hours.

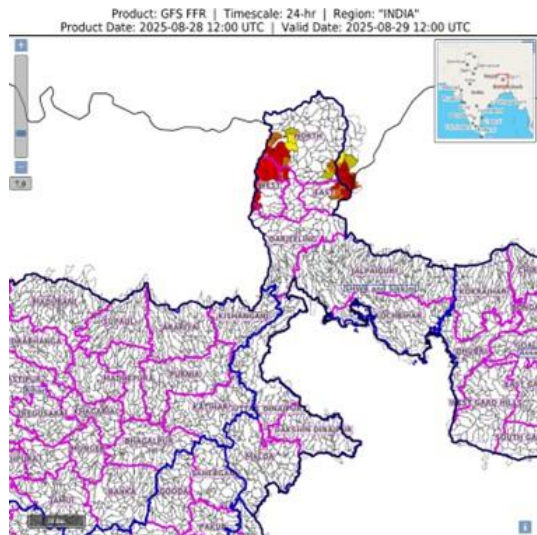


24 hours Outlook for the Flash Flood Risk (FFR) till 1730 IST of 29-08-2025 :

**Low to Moderate flash flood risk** likely over few watersheds & neighbourhoods of following Met Sub-divisions during next 24 hours.

**Sub Himalayan West Bengal & Sikkim** – North Sikkim, West Sikkim and East Sikkim districts.

Surface runoff/ Inundation may occur at some fully saturated soils & low-lying areas over Area of Concern (AoC) as shown in map due to expected rainfall occurrence in next 24 hours.



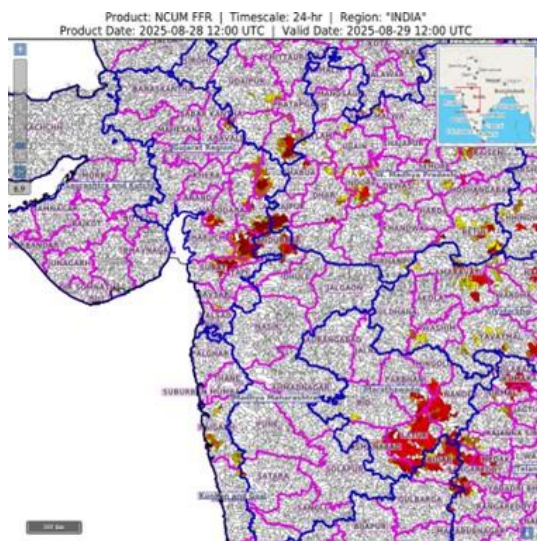
24 hours Outlook for the Flash Flood Risk (FFR) till 1730 IST of 29-08-2025 :

**Low to Moderate flash flood risk** likely over few watersheds & neighbourhoods of following Met Sub-divisions during next 24 hours.

**Telangana** - Adilabad, Kamareddy, Medak, Nirmal, Nizamabad, Sangareddy and Vikarabad districts.  
**Vidarbha** – Amarawati, Washim, Buldana and Yavatmal districts.

**Marathawada** – Nanded, Latur, Parbhani, Hingoli and Osmanabad districts

**Gujarat Region** – Dahod, Panchmahal, Chhotta Udaipur, Narmada, Surat, Tapi, and Vadodara districts



**\*Red color warning does not mean "Red Alert" Red color warning means "Take Action"**

**Forecast and warning for any day is valid from 0830 hours IST of day till 0830 hours IST of next day**

**For more details kindly visit <https://mausam.imd.gov.in> or contact 011-2434-4599**

**(Service to the nation since 1875)**





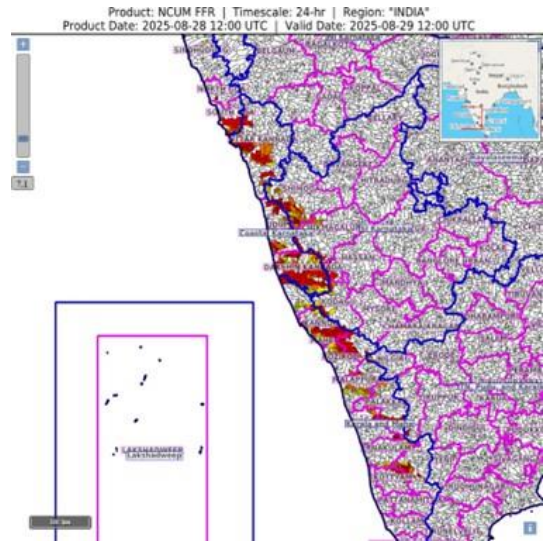
Surface runoff/ Inundation may occur at some fully saturated soils & low-lying areas over Area of Concern (AoC) as shown in map due to expected rainfall occurrence in next 24 hours.

24 hours Outlook for the Flash Flood Risk (FFR) till 1730 IST of 29-08-2025 :

Low to Moderate flash flood risk likely over few watersheds & neighbourhoods of following Met Sub-divisions during next 24 hours.

Coastal Karnataka – Uttar Kannada, Dakshin Kannada and Udupi districts.  
Kerala and Mahe – Kasargod, Kannur, Wayanad, Mahe, Kozhikode, Malapuram and Palakkad districts.

Surface runoff/ Inundation may occur at some fully saturated soils & low-lying areas over Area of Concern (AoC) as shown in map due to expected rainfall occurrence in next 24 hours.





**Table-1**

## 7 Days Rainfall Forecast

S.No.	Subdivision	28- Aug	29- Aug	30- Aug	31- Aug	1- Sep	2- Sep	3- Sep
		Day 1	Day 2	Day 3	Day 4	Day 5	Day 6	Day 7
1	ANDAMAN & NICOBAR ISLANDS	FWS	FWS	FWS	WS	WS	WS	WS
2	ARUNACHAL PRADESH	WS	WS	FWS	SCT	SCT	SCT	SCT
3	ASSAM & MEHGHALAYA	WS	WS	SCT	SCT	SCT	SCT	FWS
4	N. M. M. & T.	WS	WS	FWS	SCT	SCT	FWS	FWS
5	S.H. WEST BENGAL & SIKKIM	WS	WS	WS	FWS	FWS	FWS	FWS
6	GANGETIC WEST BENGAL	FWS	WS	FWS	FWS	FWS	FWS	FWS
7	ODISHA	SCT	SCT	FWS	FWS	FWS	FWS	FWS
8	JHARKHAND	SCT	FWS	WS	WS	WS	FWS	FWS
9	BIHAR	SCT	SCT	FWS	FWS	FWS	SCT	SCT
10	EAST UTTAR PRADESH	ISOL	ISOL	ISOL	SCT	FWS	SCT	ISOL
11	WEST UTTAR PRADESH	ISOL	ISOL	SCT	FWS	WS	FWS	SCT
12	UTTARAKHAND	WS	WS	WS	WS	WS	WS	FWS
13	HARYANA, CHD & DELHI	SCT	SCT	FWS	FWS	FWS	FWS	SCT
14	PUNJAB	ISOL	SCT	FWS	FWS	FWS	SCT	SCT
15	HIMACHAL PRADESH	FWS	WS	WS	WS	WS	FWS	FWS
16	JAMMU AND KASHMIR AND LADAKH	SCT	SCT	FWS	FWS	FWS	FWS	SCT
17	WEST RAJASTHAN	SCT	SCT	SCT	SCT	SCT	SCT	SCT
18	EAST RAJASTHAN	SCT	FWS	FWS	FWS	FWS	FWS	FWS
19	WEST MADHYA PRADESH	FWS	FWS	WS	WS	WS	FWS	FWS
20	EAST MADHYA PRADESH	FWS	FWS	FWS	WS	WS	FWS	FWS
21	GUJRAT REGION	WS	WS	WS	WS	WS	WS	WS
22	SAURASHTRA & KUTCH	SCT	FWS	FWS	FWS	FWS	FWS	FWS
23	KONKAN & GOA	WS	WS	WS	WS	WS	WS	WS
24	MADHYA MAHARASHTRA	FWS	FWS	SCT	SCT	SCT	SCT	SCT
25	MARATHWADA	WS	FWS	ISOL	ISOL	ISOL	ISOL	SCT
26	VIDARBHA	WS	WS	FWS	SCT	SCT	FWS	FWS
27	CHATTISGARH	FWS	SCT	FWS	FWS	FWS	FWS	FWS
28	COASTAL ANDHRA PRADESH	FWS	SCT	SCT	SCT	SCT	SCT	SCT
29	TELANGANA	WS	FWS	FWS	SCT	SCT	SCT	SCT
30	RAYALASEEMA	SCT	ISOL	ISOL	ISOL	ISOL	ISOL	ISOL
31	TAMILNADU & PUDUCHERRY	ISOL	ISOL	ISOL	ISOL	ISOL	ISOL	ISOL
32	COSTAL KARNATAKA	WS	WS	WS	WS	WS	WS	WS
33	NORTH INTERIOR KARNATAKA	WS	FWS	FWS	SCT	SCT	SCT	SCT
34	SOUTH INTERIOR KARNATAKA	WS	FWS	SCT	SCT	ISOL	ISOL	SCT
35	KERALA	WS	WS	FWS	FWS	FWS	FWS	FWS
36	LAKSHDWEAP	WS	WS	FWS	FWS	FWS	FWS	FWS

Legend	Category	%Stations
WS	Widespread/Most Places	76-100
FWS	Fairly Widespread/Many Places	51-75
SCT	Scattered/ A Few Places	26-50
ISOL	Isolated Places	1-25
DRY	No Rain	0

\*Red color warning does not mean "Red Alert" Red color warning means "Take Action"

Forecast and warning for any day is valid from 0830 hours IST of day till 0830 hours IST of next day

For more details kindly visit <https://mausam.imd.gov.in> or contact 011-2434-4599

(Service to the nation since 1875)

Fig. 1: Maximum Temperatures Dated 2025-08-28

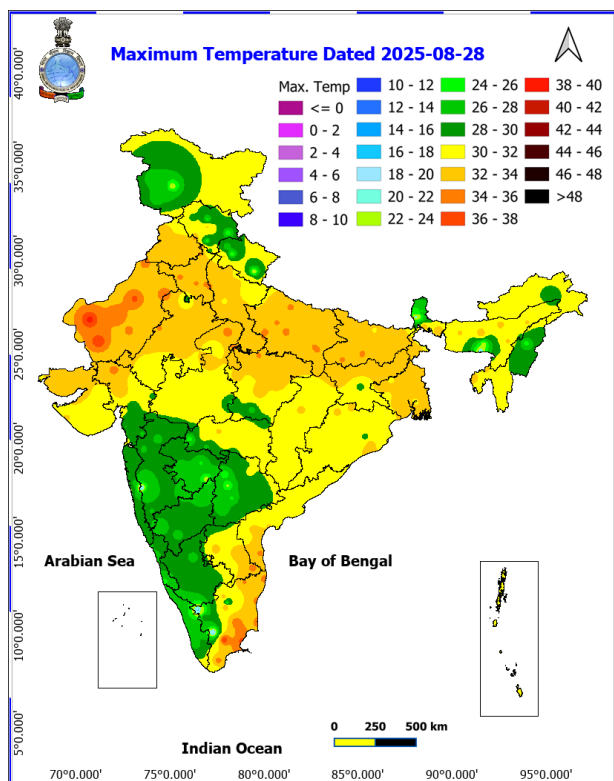


Fig. 2: Departure of Maximum Temp. Dated 2025-08-28

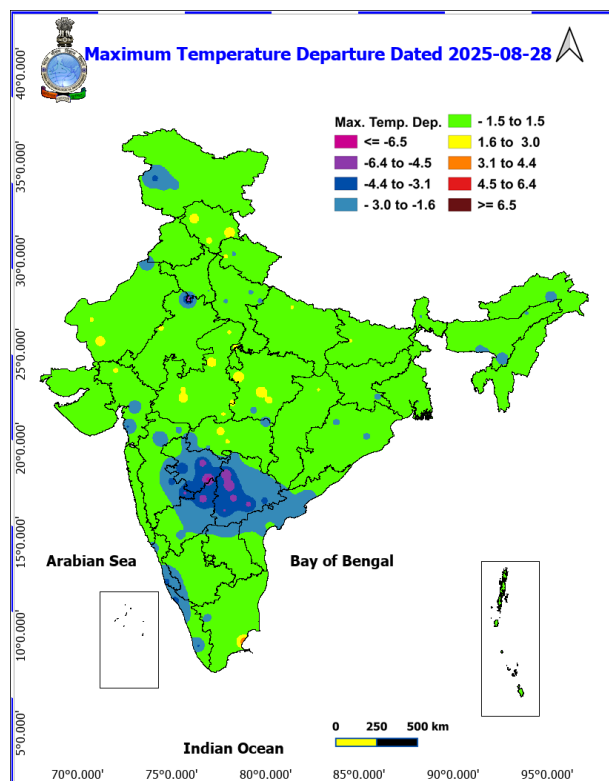


Fig. 3: Minimum Temperatures Dated 2025-08-28

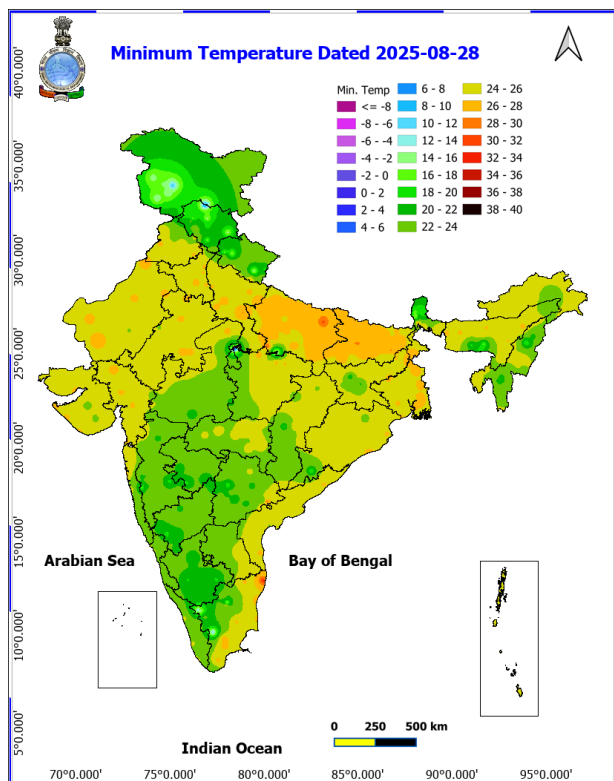
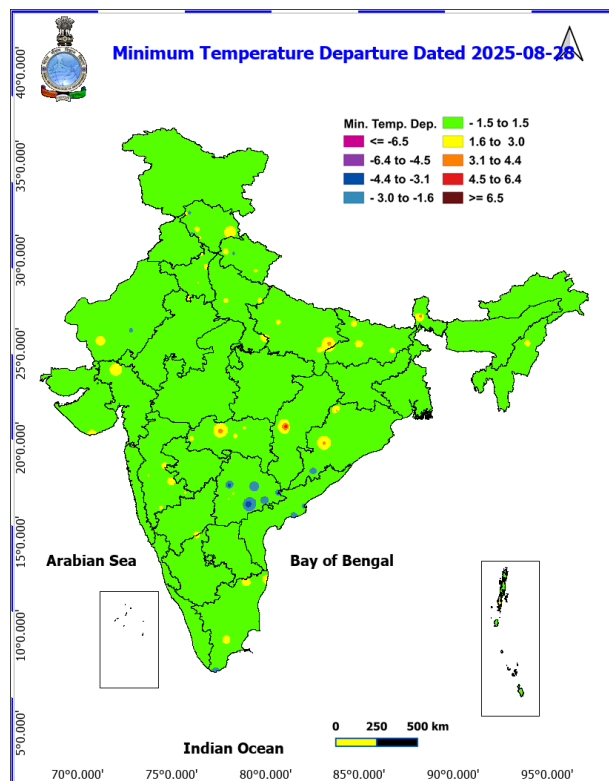
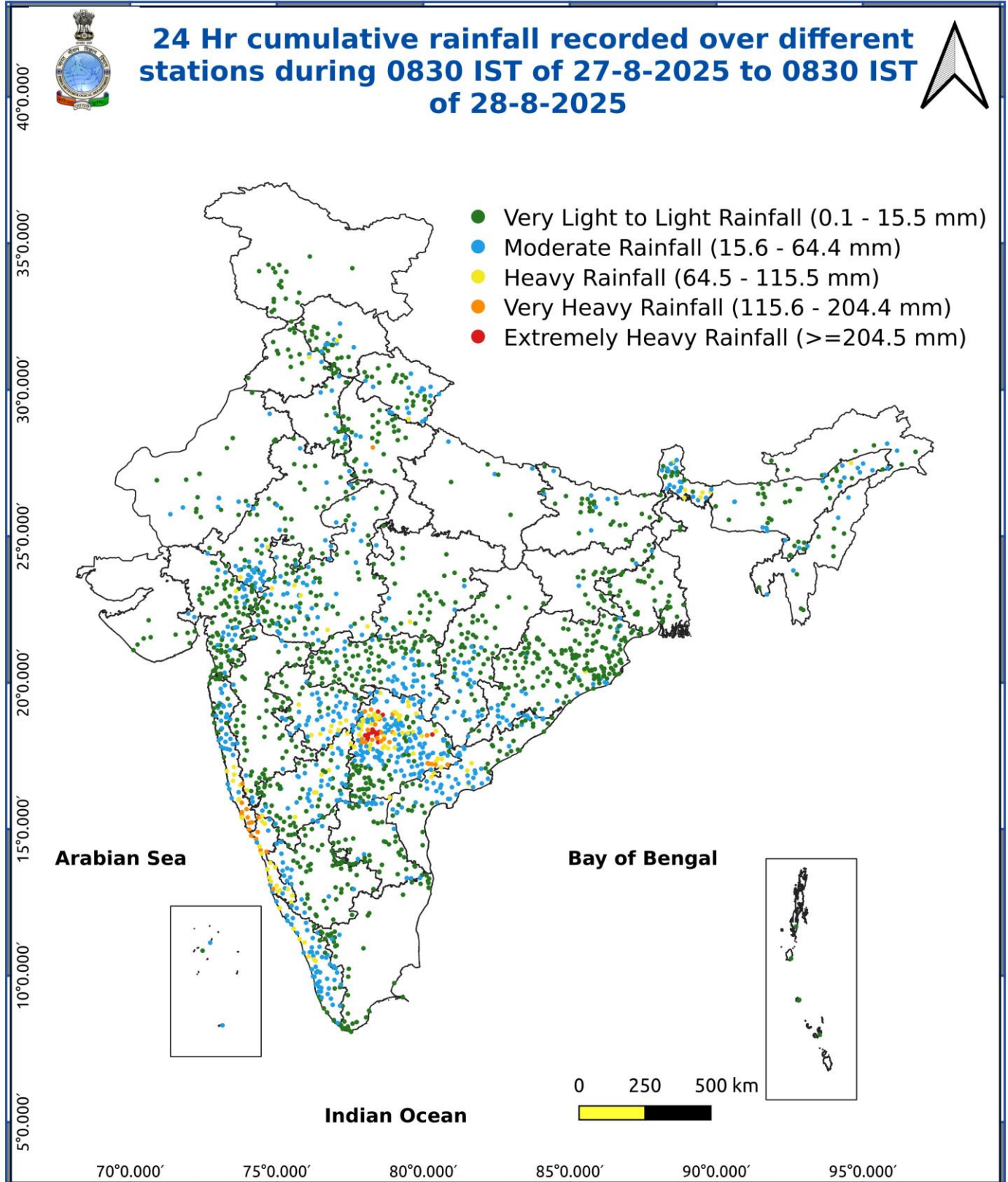


Fig. 4: Departure of Minimum Temp. Dated 2025-08-28







\*Red color warning does not mean "Red Alert" Red color warning means "Take Action"

Forecast and warning for any day is valid from 0830 hours IST of day till 0830 hours IST of next day

For more details kindly visit <https://mausam.imd.gov.in> or contact 011-2434-4599

(Service to the nation since 1875)



### Impact & Action Suggested due to

**Isolated Extremely heavy rainfall** very likely at isolated places over Telangana on 28<sup>th</sup> August.

**Isolated very heavy rainfall** over Gujarat Region and Coastal Karnataka on 28<sup>th</sup>; Coastal Karnataka on 29<sup>th</sup> & 30<sup>th</sup>; Interior Karnataka, Tamil Nadu, Kerala, Vidarbha, Sub-Himalayan West Bengal, Konkan, Goa, Marathawada on 28<sup>th</sup>; ghat areas of Madhya Maharashtra on 28<sup>th</sup> & 29<sup>th</sup> August; over Uttarakhand on 28<sup>th</sup> & 29<sup>th</sup> August, 01<sup>st</sup> & 02<sup>nd</sup> September and East Rajasthan on 28<sup>th</sup> & 31<sup>st</sup> August.

### Impact Expected

Localized Flooding of roads, water logging in low lying areas and closure of underpasses mainly in urban areas of the above region.

Occasional reduction in visibility due to heavy rainfall.

Disruption of traffic in major cities due to water logging in roads leading to increased travel time.

Minor damage to kutcha roads.

Possibilities of damage to vulnerable structure.

Localized Landslides/Mudslides/landslips/mudslips/landsinks/mudsinks.

Damage to horticulture and standing crops in some areas due to inundation.

It may lead to riverine flooding in some river catchments (for riverine flooding please visit Web page of CWC)

### Action Suggested

Check for traffic congestion on your route before leaving for your destination.

Follow any traffic advisories that are issued in this regard.

Avoid going to areas that face the water logging problems often.

Avoid staying in vulnerable structure.

### Agromet advisories for various parts of the country

#### Agromet advisories for likely impact of Heavy / Heavy to Very Heavy / Extremely Heavy Rainfall

In **Jammu and Kashmir**, drain out excess rain water from fields of rice, maize, pulses and vegetables in **Sub Tropical Zone** and maize, *kharif* pulses, rice and vegetables in **Intermediate Zone**. In **Valley Temperate Zone**, ensure proper drainage in fields of maize, kidney beans and vegetables and maintain a thin layer of water in rice fields.

In **Himachal Pradesh**, maintain proper drainage channels in ginger, turmeric and maize fields in **Mid Hills Sub Humid Zone** and rice, maize and vegetable fields in **Sub Montane and Low Hills Sub Tropical Zone**. In **High Hills Sub**

**\*Red color warning does not mean "Red Alert" Red color warning means "Take Action"**

**Forecast and warning for any day is valid from 0830 hours IST of day till 0830 hours IST of next day**

**For more details kindly visit <https://mausam.imd.gov.in> or contact 011-2434-4599**

**(Service to the nation since 1875)**

**Temperate Wet Zone**, postpone transplanting of cauliflower, cabbage and broccoli seedlings and make proper drainage channels in fields of maize, finger millet and vegetables to avoid water stagnation.

In **Uttarakhand**, maintain proper drainage channels in fields of barnyard millet, finger millet and green gram in **Sub Humid Sub Tropic Zone** and rice, green gram, black gram, sugarcane, maize, groundnut, finger millet and vegetables in **Bhabar and Tarai Zone**. In **Hill Zone**, postpone sowing of vegetable pea and radish and provide proper drainage in fields of finger millet and kidney beans.

In **Punjab**, drain out excess water from fields of sugarcane and green gram and maintain proper drainage in chilli fields and remove stagnant rainwater immediately after rainfall in **Undulating Plain Zone**.

In **Haryana**, to prevent waterlogging make arrangements to drain out excess water from fields of cotton, pearl millet, green gram and cluster bean in **Western Zone** and sugarcane, cotton, maize, pearl millet and vegetables in **Eastern Zone**.

In **Odisha**, make provision for draining out excess rain water from fields of rice, black gram, green gram, pigeon pea, maize, groundnut and vegetables in **Eastern Ghat High Land Zone and South Eastern Ghat Zone** and rice, maize, pigeon pea, and vegetables in **North Eastern Ghat Zone**.

In **Chhattisgarh**, ensure proper drainage in fields of rice, minor millets, maize, pulses and oilseeds in **Bastar Plateau Zone** and groundnut, black gram, soybean, pigeon pea and vegetables in **Chattisgarh Plain Zone**.

In **Kerala**, ensure adequate drainage facilities in rice nursery and standing crop fields. Provide support to banana plants.

In **Karnataka**, provide adequate drainage facilities in rice fields and plantations of arecanut and banana in **Coastal Zone** and fields of rice, maize, cotton, ginger and plantations of arecanut in **Hill Zone**.

In **Coastal Andhra Pradesh**, make arrangements for draining excess water from fields of maize, green gram, groundnut, mesta and cotton in **North Coastal Zone** and maize, groundnut, finger millet, ginger, turmeric and vegetables in **High Altitude Tribal Zone**.

In **Telangana**, drain out excess water from fields of rice, cotton, maize, soybean, pigeon pea, turmeric and vegetables in **Northern Telangana Zone** and rice, cotton, soybean, maize and pigeon pea in **Southern Telangana Zone**.

In **Maharashtra**, make arrangements to drain out excess water from fields of rice, finger millet, turmeric, groundnut, vegetables and fruit orchards in **Konkan**; rice, maize, groundnut, soybean, vegetable fields and fruit orchards in *ghat* areas of Madhya Maharashtra and rice, cotton, pigeon pea, soybean, vegetables and fruit orchards in **East Vidarbha**.

### Livestock / Fishery

Keep the animals inside the shed during heavy rainfall and provide them balanced feed.

Store feed and fodder in a safe place to prevent spoilage.

Construct an outlet with proper netting around the ponds to drain out excess water, thereby preventing fish from escaping in case of overflow.

**Agromet advisories for likely impact of Thunderstorm / Gusty Winds / Squally Winds**

**(Based on the IBF and advisories issued by different AMFUs)**

**\*Red color warning does not mean "Red Alert" Red color warning means "Take Action"**

**Forecast and warning for any day is valid from 0830 hours IST of day till 0830 hours IST of next day**

**For more details kindly visit <https://mausam.imd.gov.in> or contact 011-2434-4599**

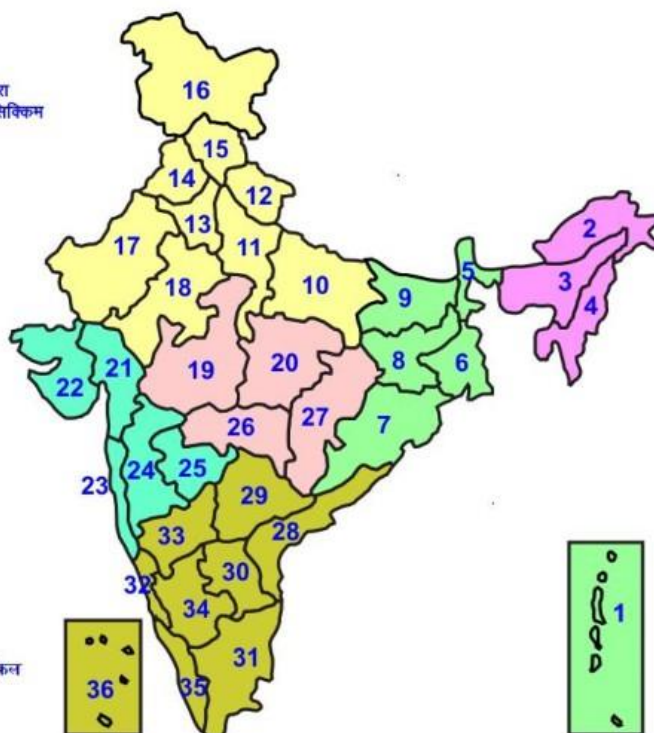
**(Service to the nation since 1875)**



Provide mechanical support to horticultural crops and staking or support to vegetables and young fruit plants / fruit-bearing plants to avoid lodging due to strong winds.

## LEGENDS

- 1 अंडमान और निकोबार द्वीप समुह
- 2 अरुणाचल प्रदेश
- 3 असम और मेघालय
- 4 नागालैंड मनीपुर मीजोरम और त्रिपुरा
- 5 उप हिमालय पश्चिम बंगाल एवं सिक्किम
- 6 पश्चिम बंगाल
- 7 ओडिसा
- 8 झारखंड
- 9 बिहार
- 10 पूर्वी उत्तर प्रदेश
- 11 पश्चिम उत्तर प्रदेश
- 12 उत्तराखंड
- 13 हरियाणा चंडीगढ़ एवं दिल्ली
- 14 पंजाब
- 15 हिमाचल प्रदेश
- 16 जम्मू एवं कश्मीर एवं लद्दाख
- 17 पश्चिम राजस्थान
- 18 पूर्वी राजस्थान
- 19 पश्चिम मध्य प्रदेश
- 20 पूर्वी मध्य प्रदेश
- 21 गुजरात क्षेत्र
- 22 सौराष्ट्र एवं कच्छ
- 23 कोंकण एवं गोवा
- 24 मध्य महाराष्ट्र
- 25 मराठावाड़ा
- 26 विदर्भ
- 27 छत्तीसगढ़
- 28 तटीय आंध्र प्रदेश एवं यनम
- 29 तेलंगाना
- 30 रायलसेमा
- 31 तमिलनाडु, पुदुचेरी एवं कराईकल
- 32 तटिय कर्नाटक
- 33 आंतरिक उत्तरी कर्नाटक
- 34 आंतरिक दक्षिणी कर्नाटक
- 35 केरल एवं माहे
- 36 लक्षद्वीप



1. Andaman & Nicobar Islands
2. Arunachal Pradesh
3. Assam & Meghalaya
4. Nagaland, Manipur, Mizoram & Tripura
5. Sub-Himalayan West Bengal & Sikkim
6. Gangetic West Bengal
7. Orissa
8. Jharkhand
9. Bihar
10. East Uttar Pradesh
11. West Uttar Pradesh
12. Uttarakhand
13. Haryana, Chd & Delhi
14. Punjab
15. Himachal Pradesh
16. Jammu & Kashmir and Ladakh
17. West Rajasthan
18. East Rajasthan
19. West Madhya Pradesh
20. East Madhya Pradesh
21. Gujarat
22. Saurashtra
23. Konkan & Goa
24. Madhya Maharashtra
25. Marathawada
26. Vidharbha
27. Chhattisgarh
28. Coastal Andhra Pradesh & Yanam
29. Telangana
30. Rayalaseema
31. Tamilnadu, Puducherry & Karaikal
32. Coastal Karnataka
33. North Interior Karnataka
34. South Interior Karnataka
35. Kerala & Mahe
36. Lakshadweep

## SPATIAL DISTRIBUTION (% of Stations reporting)

% Stations	Category	% Stations	Category
76-100	Widespread (WS/Most Places)	26-50	Scattered (SCT/ A Few Places)
51-75	Fairly Widespread (FWS/ Many Places)	1-25	Isolated (ISOL)

### Subdivision Colour

- NO WARNING
- WATCH (BE UPDATED)
- ALERT (BE PREPARED TO TAKE ACTION)
- WARNING (TAKE ACTION)

### Probabilistic Forecast

Terms	Probability of Occurrence (%)
Unlikely	< 25
Likely	25 - 50
Very Likely	50 - 75
Most Likely	> 75

-  Heavy Rain

 Thunderstorm & Lightning

 Strong surface winds

 Cold Wave

 Hot & Humid

 Very Heavy Rain

 Hailstorm

 Heat Wave

 Cold Day

 Extremely Heavy Rain

 Dust Storm

 Hot Day

 Ground Frost

 Heavy Snow

 Dust Raising Winds

 Warm Night

 Fog

\*Red color warning does not mean "Red Alert" Red color warning means "Take Action"

Forecast and warning for any day is valid from 0830 hours IST of day till 0830 hours IST of next day

For more details kindly visit <https://mausam.imd.gov.in> or contact 011-2434-4599

(Service to the nation since 1875)



## LEGENDS

### WARNING

<b>WARNING (TAKE ACTION)</b>
<b>ALERT (BE PREPARED)</b>
<b>WATCH (BE UPDATED)</b>
<b>NO WARNING (NO ACTION)</b>

### Probabilistic Forecast

Terms	Probability of Occurrence (%)
Unlikely	< 25
Likely	25 - 50
Very Likely	50 - 75
Most Likely	> 75



Heavy: 64.5 to 115.5 mm/cm \*  
Very Heavy: 115.6 to 204.4 mm/cm \*  
Extremely Heavy: > 204.4 mm/cm \*



When maximum temperature of a station reaches  $\geq 40^{\circ}\text{C}$  for plains and  $\geq 30^{\circ}\text{C}$  for hilly regions  
(a) Based on Departure from normal

Heat Wave: Maximum Temperature Departure from normal  $4.5^{\circ}\text{C}$  to  $6.4^{\circ}\text{C}$ .  
Severe Heat Wave: Maximum Temperature Departure from normal  $\geq 6.5^{\circ}\text{C}$

(b). Based on Actual maximum temperature

Heat Wave: When actual maximum temperature  $\geq 45^{\circ}\text{C}$ .  
Severe Heat Wave: When actual maximum temperature  $\geq 47^{\circ}\text{C}$

(c). Criteria for heat wave for coastal stations

When maximum temperature departure is  $> 4.5^{\circ}\text{C}$  from normal. Heat Wave may be described provided maximum temperature  $\geq 37^{\circ}\text{C}$



When maximum temperature remains  $40^{\circ}\text{C}$

Warm Night: When minimum temperature departure  $4.5^{\circ}\text{C}$  to  $6.4^{\circ}\text{C}$ .  
Severe Warm Night: When minimum temperature departure  $> 6.4^{\circ}\text{C}$ .



When minimum temperature of a station  $\leq 10^{\circ}\text{C}$  for plains and  $\leq 0^{\circ}\text{C}$  for hilly regions.

(a). Based on departure

Cold Wave: Minimum Temperature Departure from normal  $-4.5^{\circ}\text{C}$  to  $-6.4^{\circ}\text{C}$ .  
Severe Cold Wave: Minimum Temperature Departure from normal  $\leq -6.5^{\circ}\text{C}$

(b) Based on actual Minimum Temperature (for Plains only)

Cold Wave: When Minimum Temperature is  $\leq 4.0^{\circ}\text{C}$   
Severe Cold Wave: When Minimum Temperature is  $\leq 2.0^{\circ}\text{C}$

(c) For Coastal Stations

When Minimum Temperature departure is  $\leq -4.5^{\circ}\text{C}$  & actual Minimum Temperature is  $\leq 15^{\circ}\text{C}$



When minimum temperature of a station  $\leq 10^{\circ}\text{C}$  for plains and  $\leq 0^{\circ}\text{C}$  for hilly regions  
Based on departure

Cold Day: Maximum Temperature Departure from normal  $-4.5^{\circ}\text{C}$  to  $-6.4^{\circ}\text{C}$ .  
Severe Cold Day: Maximum Temperature Departure from normal  $\leq -6.5^{\circ}\text{C}$



Phenomenon of small droplets suspended in air and the horizontal visibility  $< 1\text{km}$

Moderate Fog: When the visibility between 500-200 metres  
Dense Fog: when the visibility between 50-200 metres  
Very Dense Fog: when the visibility  $< 50$  metres



Sudden electrical discharges manifested by a flash of light (Lightning) and a sharp rumbling sound (thunder)



An ensemble of particles of dust or sand energetically lifted to great heights by a strong and turbulent wind.



Ice deposits on ground

Air temperature  $\leq 4^{\circ}\text{C}$  (over Plains)



A strong wind that rises suddenly, lasts for at least 1 minute.

Moderate: Wind speed 52-61 kmph  
Severe: Wind speed 62-87 kmph  
Very Severe: Wind speed  $> 87$  kmph



Effect of various waves in the sea over specific area

Rough to very rough: Wind speed 41-62 kmph (22-33 knots) & Wave height 2.5-6 metre  
High to very high: Wind speed 63-117 kmph (34-63 knots) & Wave height 6-14 metre  
Phenomenal: Wind speed  $> 117$  kmph ( $> 63$  knots) & Wave height  $> 14$  metre



Cyclonic Storm: Wind speed 62-87 kmph (34-47 knots)

Severe Cyclonic Storm: Wind speed 88-117 kmph (48-63 knots)

Very Severe Cyclonic Storm: Wind speed 118-165 kmph (64-89 knots)

Extremely Severe Cyclonic Storm: Wind speed 166-220 kmph (90-119 knots)

Super Cyclone Storm: Wind speed  $> 220$  kmph ( $> 119$  knots)

\*Red color warning does not mean "Red Alert" Red color warning means "Take Action"

Forecast and warning for any day is valid from 0830 hours IST of day till 0830 hours IST of next day

For more details kindly visit <https://mausam.imd.gov.in> or contact 011-2434-4599

(Service to the nation since 1875)