

2025-07-27

Time of Issue: 13:25:00 hours IST  
(Mid-Day)

## ALL INDIA WEATHER SUMMARY AND FORECAST BULLETIN

### Significant Weather Features

#### Northwest India:

**Extremely heavy rainfall** very likely at isolated places over East Rajasthan on 27<sup>th</sup> & 28<sup>th</sup> July with **very heavy rainfall** during 29<sup>th</sup>-31<sup>st</sup> July.

**A fresh spell of Heavy to very heavy rainfall likely to commence over Western Himalayan region during 29<sup>th</sup>-31<sup>st</sup> July.**

**Isolated very heavy rainfall over West Uttar Pradesh on 28<sup>th</sup>, Uttarakhand during 28<sup>th</sup>-30<sup>th</sup>, Himachal Pradesh on 29<sup>th</sup> and Jammu & Kashmir on 30<sup>th</sup> July.**

Isolated **heavy rainfall** likely over Uttarakhand during 27<sup>th</sup> July-02<sup>nd</sup> August; Himachal Pradesh during 28<sup>th</sup>-30<sup>th</sup>; Jammu and Kashmir, East Uttar Pradesh during 29<sup>th</sup>-31<sup>st</sup>; Haryana & Chandigarh on 28<sup>th</sup> & 29<sup>th</sup>; West Uttar Pradesh during 27<sup>th</sup>-29<sup>th</sup> and West Rajasthan during 27<sup>th</sup>-31<sup>st</sup> July.

Light/moderate rainfall at many places accompanied with thunderstorm, lightning likely over Western Himalayan region and some places over the plains during next 7 days.

#### West India:

**Extremely heavy rainfall** very likely at isolated places over Gujarat Region on 27<sup>th</sup> July.

Isolated **heavy rainfall** likely over Konkan & Goa, Gujarat state, Ghat areas of Madhya Maharashtra during 27<sup>th</sup>-30<sup>th</sup> July with isolated **very heavy rainfall** over Ghat areas of Madhya Maharashtra on 27<sup>th</sup> & 28<sup>th</sup>; Saurashtra & Kutch, Konkan on 27<sup>th</sup>; Gujarat Region on 28<sup>th</sup> July.

Light to moderate rainfall at many places very likely over the region during next 6-7 days.

#### Northeast India:

**A fresh spell of Heavy to very heavy rainfall likely to commence over Northeast India during 01st-03rd August.**

**Extremely heavy rainfall** very likely at isolated places over Nagaland, Manipur, Mizoram & Tripura on 01<sup>st</sup> & 02<sup>nd</sup> August.

Light/moderate rainfall at many places accompanied with **thunderstorm, lightning and isolated heavy to very heavy rainfall** likely to continue over Arunachal Pradesh, Assam & Meghalaya during 27<sup>th</sup> July-02<sup>nd</sup> August.

#### East & Central India:

Isolated **heavy rainfall** likely over Madhya Pradesh, Chhattisgarh during 27<sup>th</sup>-31<sup>st</sup>; Vidarbha on 27<sup>th</sup>; Sub-Himalayan West Bengal & Sikkim during 27<sup>th</sup> July & 02<sup>nd</sup> August; Bihar during 28<sup>th</sup>-30<sup>th</sup>; Jharkhand, Gangetic West Bengal during 29<sup>th</sup>-31<sup>st</sup>; Odisha on 29<sup>th</sup> July with isolated **very heavy rainfall** over West Madhya Pradesh during 27<sup>th</sup>-29<sup>th</sup>; East Madhya Pradesh on 28<sup>th</sup> & 29<sup>th</sup>; Sub-Himalayan West Bengal & Sikkim on 02<sup>nd</sup> August.

Light to moderate rainfall at most/many places accompanied with thunderstorm, lightning & gusty winds (speed reaching 30-40 Km/h) likely over the region during next 5 days.

**\*Red color warning does not mean "Red Alert" Red color warning means "Take Action"**

**Forecast and warning for any day is valid from 0830 hours IST of day till 0830 hours IST of next day**

**For more details kindly visit <https://mausam.imd.gov.in> or contact 011-2434-4599**

**(Service to the nation since 1875)**

**South Peninsular India:**

Isolated **heavy rainfall** likely over Tamil Nadu on 27<sup>th</sup>; Kerala & Mahe, South Interior Karnataka during 27<sup>th</sup>-30<sup>th</sup>; Coastal Karnataka during 27<sup>th</sup>-31<sup>st</sup> July with isolated **very heavy rainfall** over Coastal Karnataka during 27<sup>th</sup>-29<sup>th</sup>; South Interior Karnataka on 27<sup>th</sup> & 28<sup>th</sup> July.

**Strong surface winds** (speed reaching 40-50 kmph) very likely over South Peninsular India during next 5 days.

Light to moderate rainfall at most/many places over Kerala & Mahe, Lakshadweep, Karnataka, Rayalaseema, Coastal Andhra Pradesh & Yanam and Telanganaduring next 7 days.

### Main Weather Observations:

❖ **Rainfall distribution** (from 0830 hours IST of yesterday to 0830 hours IST of today): **at most places** over Sub Himalayan West Bengal & Sikkim, Gangetic West Bengal, East Rajasthan, Gujarat Region, Chhattisgarh, Kerala & Mahe and Lakshadweep; **at many places** over West Rajasthan; **at a few places** over Andaman & Nicobar Islands, Uttarakhand, Himachal Pradesh, Jammu-KashmirLadakh-Gilgit-Baltistan-Muzaffarabad and Saurashtra & Kutch; **at isolated places** over Haryana-Chandigarh-Delhi, Punjab, Coastal Andhra Pradesh & Yanam, Rayalaseema and Tamil Nadu, Puducherry & Karaikal; **Dry** over rest of the country.

❖ **Significant rainfall recorded(in cm)** (from 0830 hours IST of yesterday to 0830 hours IST of today): **Tamil Nadu, Puducherry & Karaikal**: Avalanche (dist Nilgiris) 26; Upper Bhavani (dist Nilgiris) 18; Chinnakalar (dist Coimbatore) 17; Naduvattam (dist Nilgiris) 16; Cincona (dist Coimbatore) 8; Valparai PTO (dist Coimbatore), Upasi Tea Research AWS (dist Coimbatore), Sholayar (dist Coimbatore), Glenmorgan (dist Nilgiris) 7 Each; **Gujarat Region**: Vadgam (dist Banaskantha) 23; Dharoi Colony (dist Mehsana) 18; Kathalal (dist Kheda), Siddhpur (dist Patan) 17 Each; Modasa (dist Aravalli) 16; Kaprada (dist Valsad), Talod (dist Sabarkantha) 13 Each; Dharampur (dist Valsad), Mahemdavad (dist Kheda), Dahegam (dist Gandhinagar) 12 Each; Satlasana (dist Mehsana), Lunawada (dist Mahisagar), Palanpur (dist Banaskantha), Mahesana (dist Mehsana) 10 Each; Prantij (dist Sabarkantha), Wanakbori (dist Mahisagar), Deesa (dist Banaskantha), Mahudha (dist Kheda), Bayad ARG (dist Aravalli), Dhansura (dist Aravalli), Visnagar (dist Mehsana) 9 Each; Virpur (dist Mahisagar), Vadnagar (dist Mehsana), Bhiloda (dist Aravalli), Balasinor (dist Mahisagar), Patan AWS (dist Patan), Bayad (dist Aravalli), Waghai (dist Dangs), Fatepura (dist Dahod), Dang Kvk AWS (dist Dangs), Dantiwada (dist Banaskantha) 8 Each; Kheralu (dist Mehsana), Vadali (dist Sabarkantha), Dholka ARG (dist Ahmedabad), Kadana (dist Mahisagar), Dhanera (dist Banaskantha), Himatanagar (dist Sabarkantha), Dantewada AWS (dist Banaskantha), Dangs (ahwa) (dist Dangs) 7 Each; **Kerala & Mahe**: Ayyankunnu AWS (dist Cannur) 18; Aralam AWS (dist Cannur) 16; Munnar Kseb (dist Idukki) 15; Chemberi AWS (dist Cannur) 14; Tellichery (dist Cannur), Idukki (dist Idukki) 12 Each; Irikkur (dist Cannur), Kodungallur (dist Thrissur) 11 Each; Vadakara (dist Kozhikode), Sengulam Dam AWS (dist Idukki), Udumbannoor AWS (dist Idukki), Munakkal AWS (dist Thrissur) 10 Each; Peermade To (dist Idukki), Kochi C.i.a.l. (dist Ernakulam), Perumpavur (dist Ernakulam), Kollamkode (dist Palakkad), Alwaye PWD (dist Ernakulam) 9 Each; Taliparamba (dist Cannur), Vyttili (dist Wynad), Myladumpara ARG (dist Idukki), Alathur (dist Palakkad), Peringome AWS (dist Cannur), Idamalayar Dam AWS (dist Ernakulam), Kollengode AWS (dist Palakkad) 8 Each; Quilandi (dist Kozhikode), Enamakkal (dist Thrissur), Chalakudi (dist Thrissur), Kannur (dist Cannur), Kannur Icar AWS (dist Cannur), Cheruvanchery AWS (dist Cannur), Choondy AWS (dist Ernakulam), Aluva AWS (dist Ernakulam), Panathur AWS (dist Kasargod), Kunnamangalam AWS (dist Kozhikode), Vadakara AWS (dist Kozhikode), Lower Sholayar AWS (dist Thrissur), Ams Kannur (dist Cannur), Ernakulam South (dist Ernakulam), Kozhikode (dist Kozhikode) 7 Each; **East Rajasthan**: Khushalgarh (dist Banswara) 14; Sajjangarh SR (dist Banswara) 11; Sarmathura SR (dist Dholpur) 10; Chothkabarwara SR (dist Sawai Madhopur), Nasirabad (dist Ajmer) 9 Each; Shergarh SR (dist Banswara), Bhungra SR (dist Banswara), Sallopat SR (dist Banswara), Bari (dist Dholpur), Jagpura SR (dist Banswara), Reodar SR (dist Sirohi) 8 Each; Sapau SR (dist Dholpur), Srinagar SR (dist Ajmer), Sapotra (dist Karauli), Nithuwa SR (dist Dungarpur), Kekri SR (dist Ajmer), Arnod SR (dist Pratapgarh), Kishanganj (dist Baran) 7 Each; **Uttarakhand**: Sama (dist Bageshwar) 12; Loharkhet (dist Bageshwar) 9; Kapkot (dist Bageshwar) 8; Dharchula (dist Pithoragarh) 7; **Chhattisgarh**: Bhanupratappur (dist Kanker) 10; Bade Bacheli (dist Dantewada) 9; Aundhi (dist Mohala Manpur Chowki) 7; **West Rajasthan**: Raipur SR (dist Pali), Jaitran (dist Pali) 7 Each.

❖ **Heavy Rainfall observed** (from 0830 hours IST of yesterday to 0830 hours IST of today):**Extremely heavy rain** at isolated places over Gujarat Region and Tamil Nadu, Puducherry & Karaikal. **Heavy to very heavy rain** at isolated places over Uttarakhand, East Rajasthan, Gujarat Region, Tamil Nadu, Puducherry & Karaikal and Kerala & Mahe. **Heavy rain** at a few places over Kerala & Mahe and at isolated places over Sub Himalayan West Bengal & Sikkim, West Rajasthan and Chhattisgarh.

❖ **Minimum Temperature Departures (as on 27-07-2025): markedly above normal(> 5.1°C)** at few places over Assam & Meghalaya; at isolated places over Sub Himalayan West Bengal & Sikkim, Bihar, East Uttar Pradesh, West Uttar Pradesh, Himachal Pradesh, West Madhya Pradesh and Saurashtra & Kutch. **appreciably above normal(3.1°C to 5.0°C)** at few places over Andaman & Nicobar Islands and East Madhya Pradesh; at isolated places over Gangetic West Bengal, Odisha, Haryana-Chandigarh-Delhi and Gujarat Region. **above normal(1.6°C to 3.0°C)** at many places over Punjab; at few places over Jammu-KashmirLadakh-Gilgit-Baltistan-Muzaffarabad, West Rajasthan, Madhya

\*Red color warning does not mean "Red Alert" Red color warning means "Take Action"

Forecast and warning for any day is valid from 0830 hours IST of day till 0830 hours IST of next day

For more details kindly visit <https://mausam.imd.gov.in> or contact 011-2434-4599

(Service to the nation since 1875)

Maharashtra and Lakshadweep; at isolated places over Uttarakhand, Konkan & Goa, Coastal Andhra Pradesh & Yanam and Tamil Nadu, Puducherry & Karaikal. **near normal(-1.5°C to 1.5°C)** at many places over East Rajasthan; at most places over Arunachal Pradesh, Nagaland, Manipur, Mizoram & Tripura, Jharkhand, Marathwada, Vidarbha, Chhattisgarh, Telangana, Rayalaseema, Coastal Karnataka, North Interior Karnataka and South Interior Karnataka; at few places over Kerala & Mahe. **The lowest minimum temperature** of 18.0°C is reported at KHANDWA (MADHYA PRADESH) over the Plains of India.

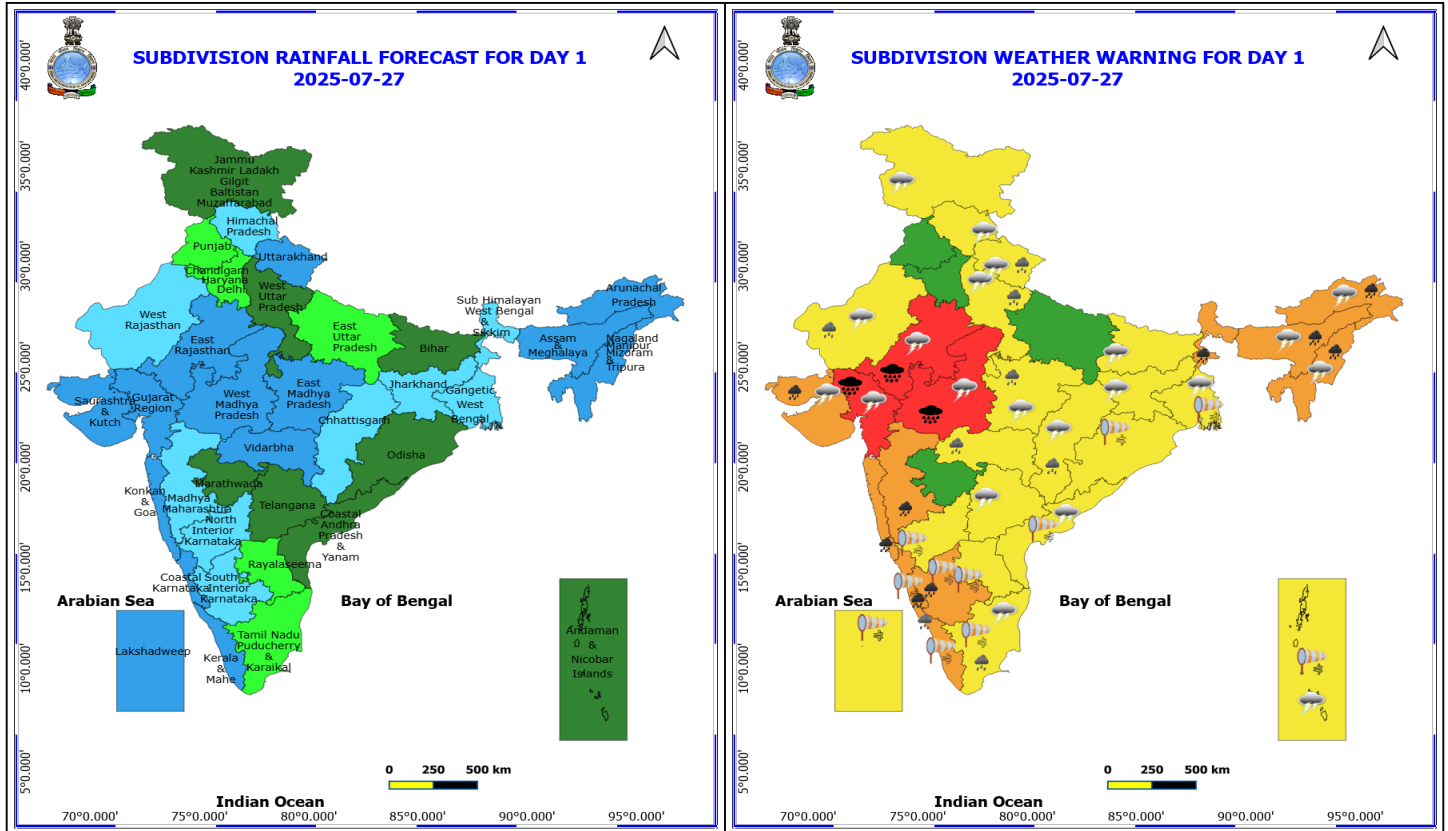
❖ **Maximum Temperature Departures (as on 26-07-2025): markedly above normal(> 5.1°C)** at isolated places over Uttarakhand. **appreciably above normal(3.1°C to 5.0°C)** at few places over Assam & Meghalaya, West Uttar Pradesh and Himachal Pradesh; at isolated places over Odisha, Haryana-Chandigarh-Delhi, Punjab, Gujarat Region and Tamil Nadu, Puducherry & Karaikal. **above normal(1.6°C to 3.0°C)** at many places over Jammu-KashmirLadakh-Gilgit-Baltistan-Muzaffarabad; at most places over Arunachal Pradesh; at isolated places over Sub Himalayan West Bengal & Sikkim, Gangetic West Bengal, Bihar and East Uttar Pradesh. **near normal(-1.5°C to 1.5°C)** at many places over Nagaland, Manipur, Mizoram & Tripura, Coastal Karnataka and South Interior Karnataka; at most places over Andaman & Nicobar Islands, West Rajasthan, Saurashtra & Kutch, Konkan & Goa and Lakshadweep; at few places over East Rajasthan, Madhya Maharashtra, Coastal Andhra Pradesh & Yanam, Rayalaseema and Kerala & Mahe; at isolated places over Jharkhand, West Madhya Pradesh, East Madhya Pradesh, Vidarbha and North Interior Karnataka. **The highest maximum temperature** of 38.3°C is reported at SRIGANGANAGAR (RAJASTHAN).

#### Meteorological Analysis (Based on 0830 hours IST)

- The **well marked low pressure** area over northwest Madhya Pradesh and neighbourhood persisted over the same region at 0830 hrs IST of today, the 27th July, 2025. The associated cyclonic circulation extends upto 7.6 km above mean sea level tilting southwestwards with height. It is very likely to continue to move nearly westwards across northwest Madhya Pradesh and weaken gradually into a low pressure area during next 12 hours.
- A **trough** runs from cyclonic circulation associated with the well marked low pressure area over northwest Madhya Pradesh and neighbourhood to northeast Bangladesh across northeast Madhya Pradesh, Jharkhand and north Gangetic West Bengal between 0.9 to 5.8 km above mean sea level.
- The **monsoon trough** at mean sea level now passes through Bikaner, Kota, **well marked low pressure** area over northwest Madhya Pradesh and neighbourhood, Daltonganj, Digha and thence southeastwards to the east central Bay of Bengal.
- The **upper air cyclonic circulation** over north parts of interior Maharashtra merged with the cyclonic circulation associated with the well marked low pressure area over northwest Madhya Pradesh and neighbourhood.
- The **upper air cyclonic circulation** over Punjab & adjoining Haryana now lies over south Panjab & neighbourhood at 0.9 km above mean sea level.
- The off-shore **trough** at sea level along Gujarat- north Kerala coasts persists.
- The **Western Disturbance** as a cyclonic circulation over Jammu & Kashmir & neighbourhood persist and now seen at 3.1 km above mean sea level with a trough aloft runs roughly along Long. 68°E to the north of Lat. 32°N.
- The upper air cyclonic circulation over northeast Assam & neighbourhood persists and now seen between 1.5 & 3.1 km above mean sea level.
- The **upper air cyclonic circulation** over south Gujarat & neighbourhood at 3.1 km above mean sea level has become less marked.

#### Weather Outlook for subsequent 3 days

- Fairly widespread to widespread rainfall likely over northwest, northeast, eastern India.
- Scattered to fairly widespread rainfall likely over central and peninsular India.



## 27 July (Day 1)

- ❖ **Heavy to Very Heavy Rainfall with isolated Extremely Heavy Rainfall** very likely at isolated places over East Rajasthan, Gujarat Region and West Madhya Pradesh.
- ❖ **Heavy to Very Heavy Rainfall** very likely at isolated places over Arunachal Pradesh, Assam & Meghalaya, Coastal Karnataka, Konkan & Goa, Madhya Maharashtra, Nagaland, Manipur, Mizoram and Tripura, Saurashtra & Kutch, South Interior Karnataka and Sub Himalayan West Bengal & Sikkim.
- ❖ **Heavy Rainfall** very likely at isolated places over Chhattisgarh, East Madhya Pradesh, Kerala & Mahe, Tamil Nadu Puducherry & Karaikal, Uttarakhand, Vidarbha, West Rajasthan and West Uttar Pradesh.
- ❖ **Thunderstorm accompanied with lightning & gusty winds(30-40kmph)** very likely at isolated places over Andaman & Nicobar Islands, Bihar, Gangetic West Bengal, Jammu-Kashmir-Ladakh-Gilgit-Baltistan-Muzaffarabad, Jharkhand and Telangana.
- ❖ **Thunderstorm accompanied with Lightning** very likely at isolated places over Arunachal Pradesh, Assam & Meghalaya, Chhattisgarh, Coastal Andhra Pradesh, Gujarat State, Himachal Pradesh, Madhya Pradesh, Nagaland, Manipur, Mizoram and Tripura, Rajasthan, Tamil Nadu Puducherry & Karaikal, Telangana, Uttarakhand and West Uttar Pradesh.
- ❖ **Strong Surface Winds** very likely at isolated places over Andaman & Nicobar Islands, Andhra Pradesh, Gangetic West Bengal, Karnataka, Kerala & Mahe, Lakshadweep, Odisha and Tamil Nadu Puducherry & Karaikal.
- Squally wind with speed reaching 45 kmph to 55 kmph gusting to 65 kmph is likely to prevail along and off Somalia, Yemen & south Oman coasts, most parts of westcentral Arabian Sea & eastcentral Arabian Sea, many parts of southwest Arabian Sea, southern parts of north Arabian Sea.
- Squally weather with wind speed reaching 40 - 50 kmph gusting to 60 kmph likely to prevail over many parts

**\*Red color warning does not mean "Red Alert" Red color warning means "Take Action"**

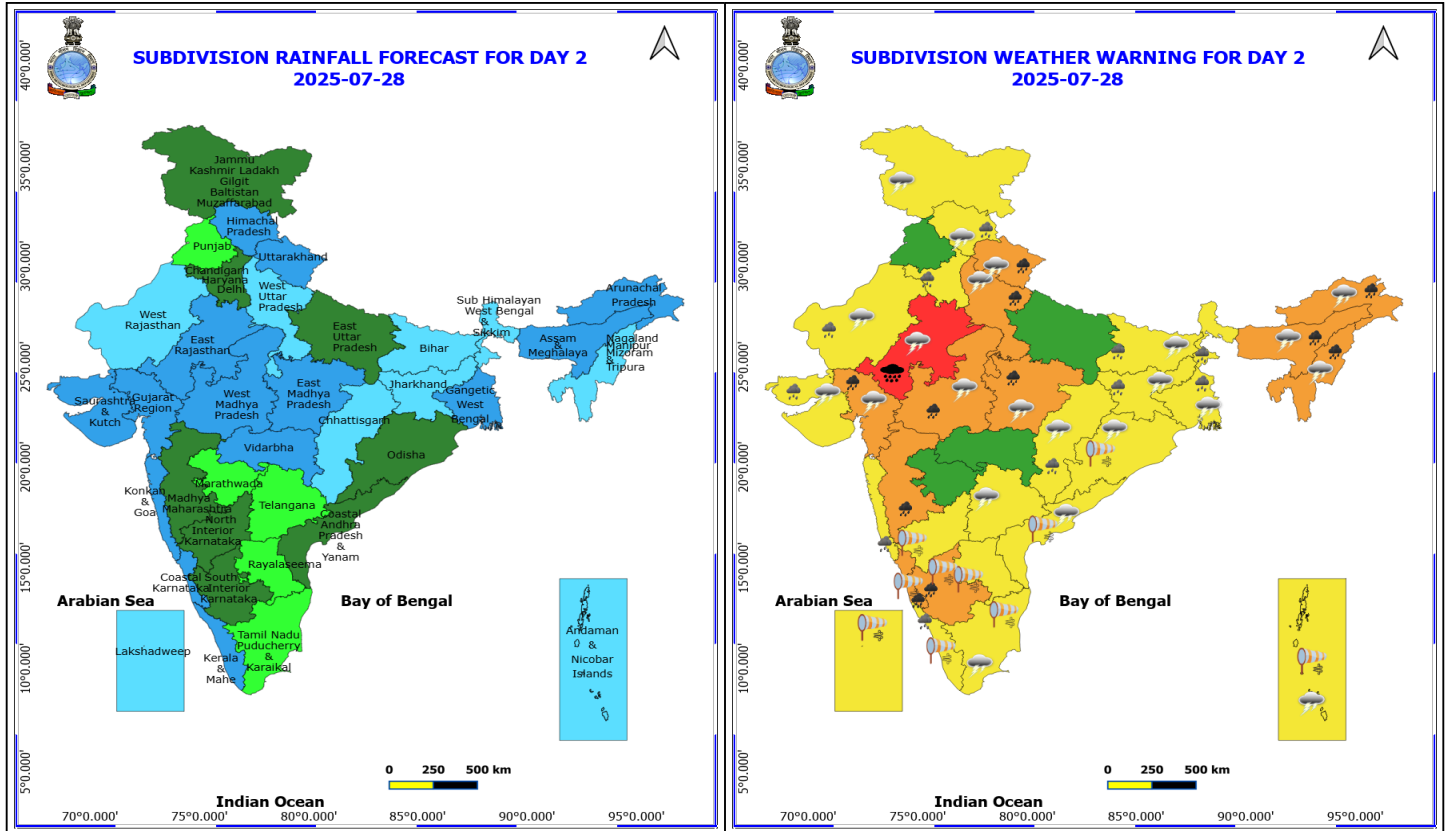
**Forecast and warning for any day is valid from 0830 hours IST of day till 0830 hours IST of next day**

**For more details kindly visit <https://mausam.imd.gov.in> or contact 011-2434-4599**

**(Service to the nation since 1875)**

of eastcentral Arabian Sea & adjoining, some parts of westcentral Arabian Sea, many parts of southeast Arabian Sea & adjoining, some parts of southwest Arabian Sea, some parts of northeast Arabian Sea & adjoining parts of northwest Arabian Sea, along and off north Gujarat, Kerala, south Andhra Pradesh, Odisha, West Bengal, Bangladesh, Myanmar coasts, over Lakshadweep, Maldives, Comorin areas, over most parts of south Bay of Bengal, over central & north Bay of Bengal, over Gulf of Mannar, along and off Sri Lanka coast and Andaman Sea.

- Squally weather with wind speed 45 - 55 kmph gusting to 65 kmph likely to along and off south Gujarat, Konkan, Goa, Karnataka, north Andhra Pradesh coasts and adjoining sea areas, over most parts of westcentral Bay of Bengal & adjoining parts of southwest, eastcentral Bay of Bengal.



## 28 July (Day 2)

- ❖ **Heavy to Very Heavy Rainfall with isolated Extremely Heavy Rainfall** very likely at isolated places over East Rajasthan.
- ❖ **Heavy to Very Heavy Rainfall** very likely at isolated places over Arunachal Pradesh, Assam & Meghalaya, Coastal Karnataka, Gujarat Region, Madhya Maharashtra, Madhya Pradesh, Nagaland, Manipur, Mizoram and Tripura, South Interior Karnataka, Uttarakhand and West Uttar Pradesh.
- ❖ **Heavy Rainfall** very likely at isolated places over Bihar, Chhattisgarh, Haryana, Chandigarh & Delhi, Himachal Pradesh, Jharkhand, Kerala & Mahe, Konkarn & Goa, Saurashtra & Kutch, West Bengal & Sikkim and West Rajasthan.
- ❖ **Thunderstorm accompanied with lightning & gusty winds(30-40kmph)** very likely at isolated places over Andaman & Nicobar Islands, Bihar, Gangetic West Bengal, Jammu-Kashmir-Ladakh-Gilgit-Baltistan-Muzaffarabad, Jharkhand, Odisha and Telangana.
- ❖ **Thunderstorm accompanied with Lightning** very likely at isolated places over Arunachal Pradesh, Assam & Meghalaya, Chhattisgarh, Coastal Andhra Pradesh, Gujarat State, Himachal Pradesh, Madhya Pradesh, Nagaland, Manipur, Mizoram and Tripura, Rajasthan, Tamil Nadu Puducherry & Karaikal, Uttarakhand and West Uttar Pradesh.
- ❖ **Strong Surface Winds** very likely at isolated places over Andaman & Nicobar Islands, Andhra Pradesh, Karnataka, Kerala & Mahe, Lakshadweep, Odisha and Tamil Nadu Puducherry & Karaikal.
- Squally wind with speed reaching 45 kmph to 55 kmph gusting to 65 kmph is likely to prevail along and off Somalia, Yemen & south Oman coasts, most parts of westcentral Arabian Sea & eastcentral Arabian Sea, many parts of southwest Arabian Sea, southern parts of north Arabian Sea, along and off Karnataka coast .
- Squally weather with wind speed reaching 40 - 50 kmph gusting to 60 kmph likely to prevail over many parts

**\*Red color warning does not mean "Red Alert" Red color warning means "Take Action"**

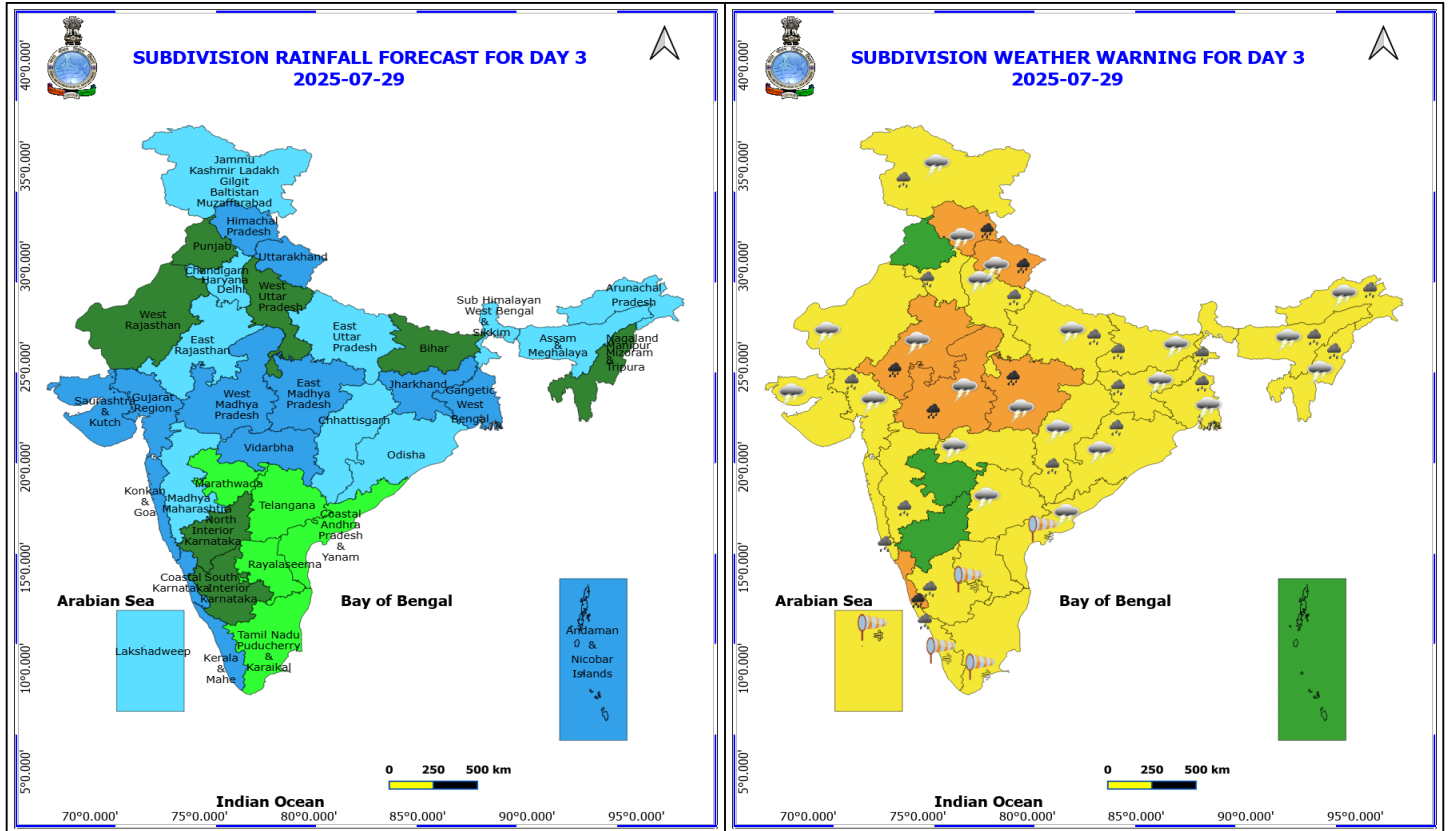
**Forecast and warning for any day is valid from 0830 hours IST of day till 0830 hours IST of next day**

**For more details kindly visit <https://mausam.imd.gov.in> or contact 011-2434-4599**

**(Service to the nation since 1875)**

of eastcentral Arabian Sea & adjoining, some parts of westcentral Arabian Sea, many parts of southeast Arabian Sea & adjoining, some parts of southwest Arabian Sea, many parts of northeast Arabian Sea & adjoining parts of northwest Arabian Sea, along and off north Gujarat, Kerala, north Andhra Pradesh, Odisha, West Bengal, Bangladesh coasts, over Lakshadweep, Maldives, Comorin areas, over many parts of south Bay of Bengal, over most parts of central & north Bay of Bengal, over Gulf of Mannar, along and off Sri Lanka coast and Andaman Sea.

- Squally weather with wind speed 45 - 55 kmph gusting to 65 kmph likely to prevail along and off south Gujarat, Konkan, Goa coasts and adjoining sea areas, over some parts of central Bay of Bengal.



## 29 July (Day 3)

- ❖ **Heavy to Very Heavy Rainfall** very likely at isolated places over Coastal Karnataka, East Rajasthan, Himachal Pradesh, Madhya Pradesh and Uttarakhand.
- ❖ **Heavy Rainfall** very likely at isolated places over Arunachal Pradesh, Assam & Meghalaya, Bihar, Chhattisgarh, Gujarat Region, Haryana, Chandigarh & Delhi, Jammu-Kashmir-Ladakh-Gilgit-Baltistan-Muzaffarabad, Jharkhand, Kerala & Mahe, Konkan & Goa, Madhya Maharashtra, Nagaland, Manipur, Mizoram and Tripura, Odisha, South Interior Karnataka, Uttar Pradesh and West Bengal & Sikkim.
- ❖ **Thunderstorm accompanied with lightning & gusty winds(30-40kmph)** very likely at isolated places over Bihar, Gangetic West Bengal, Jammu-Kashmir-Ladakh-Gilgit-Baltistan-Muzaffarabad, Jharkhand, Odisha and Telangana.
- ❖ **Thunderstorm accompanied with Lightning** very likely at isolated places over Arunachal Pradesh, Assam & Meghalaya, Chhattisgarh, Coastal Andhra Pradesh, Gujarat State, Himachal Pradesh, Madhya Pradesh, Nagaland, Manipur, Mizoram and Tripura, Rajasthan, Uttar Pradesh, Uttarakhand and Vidarbha.
- ❖ **Strong Surface Winds** very likely at isolated places over Andhra Pradesh, Kerala & Mahe, Lakshadweep and Tamil Nadu Puducherry & Karaikal.
- Squally wind with speed reaching 45 kmph to 55 kmph gusting to 65 kmph is likely to prevail along and off Somalia, Yemen & south Oman coasts, most parts of westcentral Arabian Sea & eastcentral Arabian Sea, many parts of southwest Arabian Sea, southern parts of north Arabian Sea.
- Squally weather with wind speed reaching 40 - 50 kmph gusting to 60 kmph likely to prevail over many parts of eastcentral Arabian Sea & adjoining, some parts of westcentral Arabian Sea, many parts of southeast Arabian Sea & adjoining, some parts of southwest Arabian Sea, most parts of northeast Arabian Sea & adjoining, some parts of northwest Arabian Sea, along and off Kerala, Karnataka, North Andhra Pradesh

**\*Red color warning does not mean "Red Alert" Red color warning means "Take Action"**

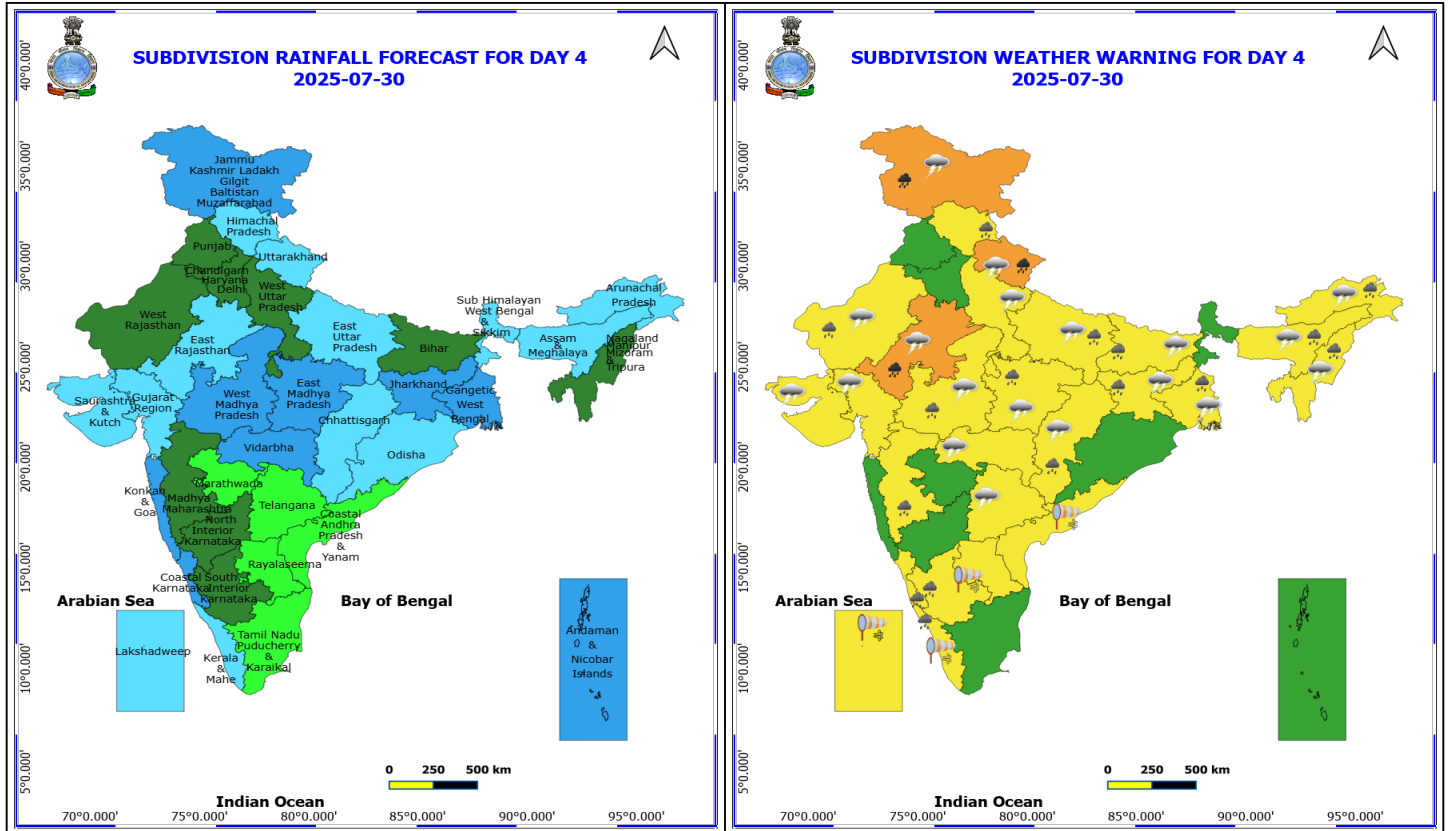
**Forecast and warning for any day is valid from 0830 hours IST of day till 0830 hours IST of next day**

**For more details kindly visit <https://mausam.imd.gov.in> or contact 011-2434-4599**

**(Service to the nation since 1875)**

coasts, over Lakshadweep, Maldives, Comorin areas, over most parts of southwest Bay of Bengal & adjoining parts of southeast Bay of Bengal, over most parts of central & adjoining north Bay of Bengal, over Gulf of Mannar, along and off Sri Lanka coast.

- Squally weather with wind speed 45 - 55 kmph gusting to 65 kmph likely to prevail along and off Gujarat, Konkan, Goa coasts and adjoining sea areas.



### 30 July (Day 4)

- ❖ **Heavy to Very Heavy Rainfall** likely at isolated places over East Rajasthan, Jammu-Kashmir-Ladakh-Gilgit-Baltistan-Muzaffarabad and Uttarakhand.
- ❖ **Heavy Rainfall** likely at isolated places over Arunachal Pradesh, Assam & Meghalaya, Bihar, Chhattisgarh, Coastal Karnataka, East Uttar Pradesh, Gangetic West Bengal, Himachal Pradesh, Jharkhand, Kerala & Mahe, Madhya Maharashtra, Madhya Pradesh, Nagaland, Manipur, Mizoram and Tripura, South Interior Karnataka and West Rajasthan.
- ❖ **Thunderstorm accompanied with lightning & gusty winds(30-40kmph)** likely at isolated places over Bihar, Gangetic West Bengal, Jammu-Kashmir-Ladakh-Gilgit-Baltistan-Muzaffarabad, Jharkhand and Telangana.
- ❖ **Thunderstorm accompanied with Lightning** likely at isolated places over Arunachal Pradesh, Assam & Meghalaya, Chhattisgarh, Gujarat State, Madhya Pradesh, Nagaland, Manipur, Mizoram and Tripura, Rajasthan, Uttar Pradesh, Uttarakhand and Vidarbha.
- ❖ **Strong Surface Winds** likely at isolated places over Andhra Pradesh, Kerala & Mahe and Lakshadweep.
  - Squally wind with speed reaching 45 kmph to 55 kmph gusting to 65 kmph is likely to prevail along and off Somalia, Yemen & south Oman coasts, most parts of westcentral Arabian Sea & eastcentral Arabian Sea, many parts of southwest Arabian Sea, southern parts of north Arabian Sea.
  - Squally weather with wind speed reaching 40 - 50 kmph gusting to 60 kmph likely to prevail over many parts of eastcentral Arabian Sea & adjoining, some parts of westcentral Arabian Sea, many parts of southeast Arabian Sea & adjoining, some parts of southwest Arabian Sea, most parts of northeast Arabian Sea & adjoining, some parts of northwest Arabian Sea, along and off Karnataka coasts, Comorin areas, over most parts of southwest Bay of Bengal & adjoining parts of southeast Bay of Bengal, over most parts of central & adjoining north Bay of Bengal, over Gulf of Mannar, along and off Sri Lanka coast.

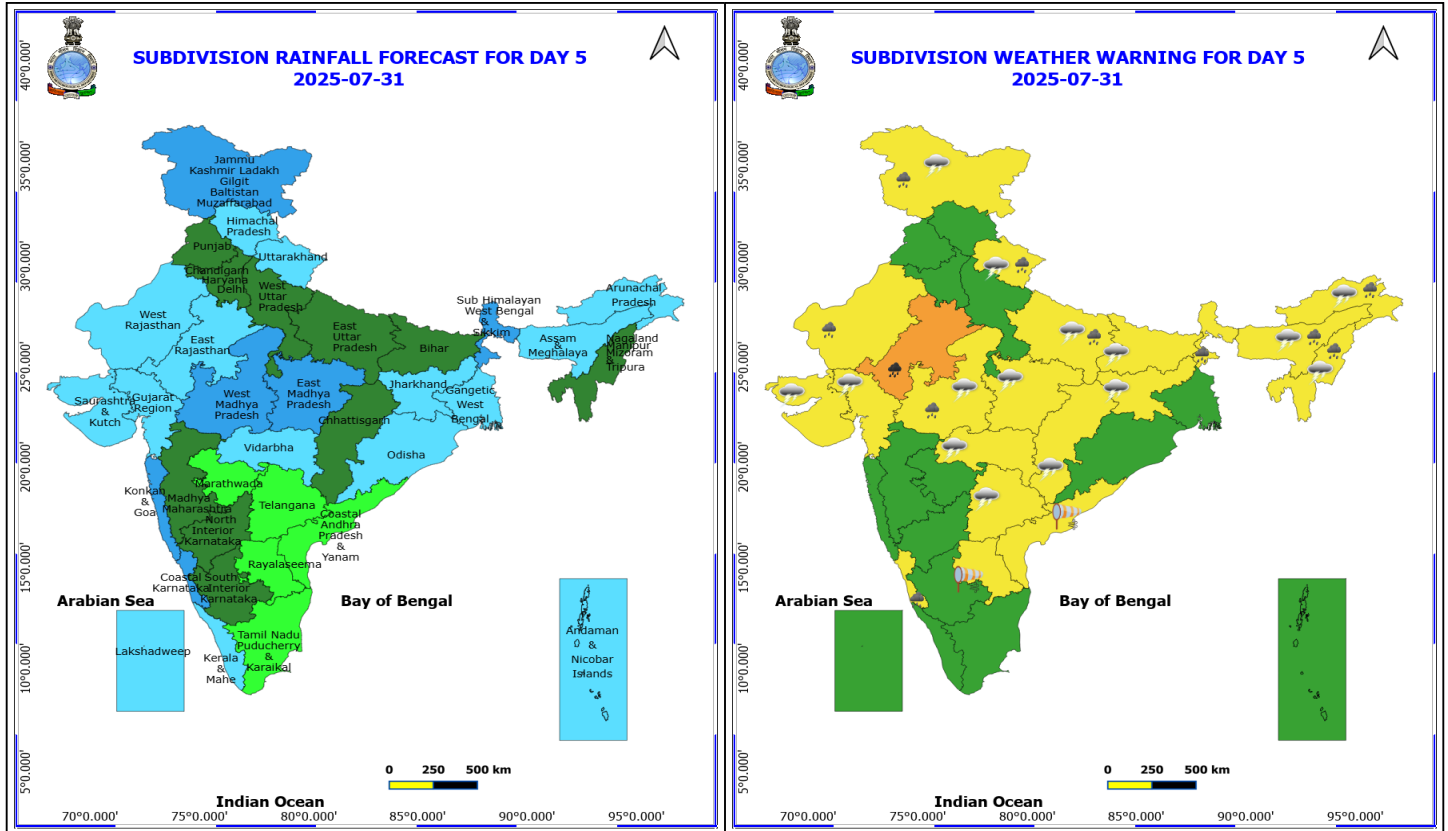
**\*Red color warning does not mean "Red Alert" Red color warning means "Take Action"**

**Forecast and warning for any day is valid from 0830 hours IST of day till 0830 hours IST of next day**

**For more details kindly visit <https://mausam.imd.gov.in> or contact 011-2434-4599**

**(Service to the nation since 1875)**

- Squally weather with wind speed 45 - 55 kmph gusting to 65 kmph likely to prevail along and off Gujarat, Konkan, Goa coasts and adjoining sea areas.



### 31 July (Day 5)

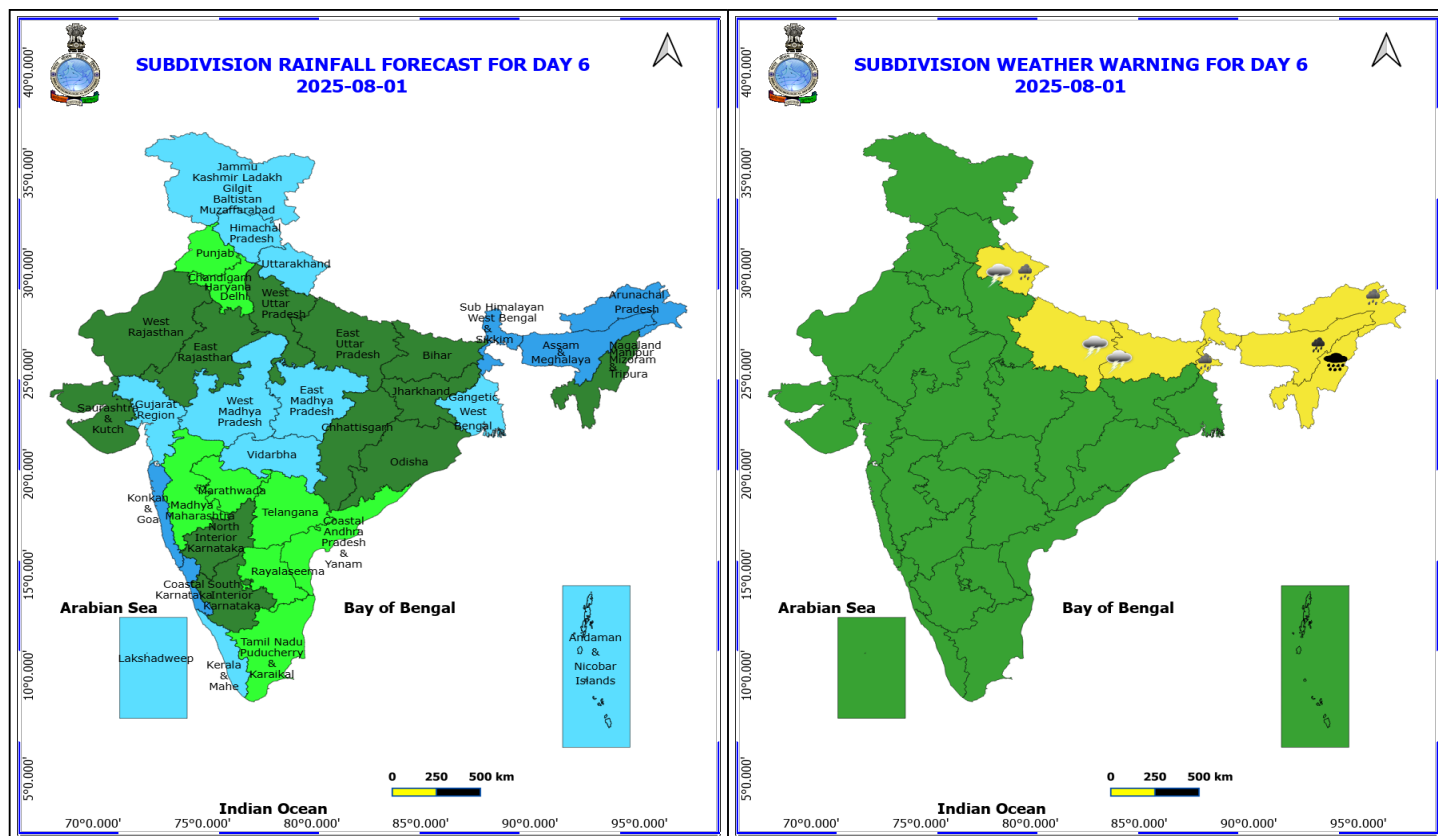
- ❖ **Heavy to Very Heavy Rainfall** likely at isolated places over East Rajasthan.
- ❖ **Heavy Rainfall** likely at isolated places over Arunachal Pradesh, Assam & Meghalaya, Coastal Karnataka, East Uttar Pradesh, Jammu-Kashmir-Ladakh-Gilgit-Baltistan-Muzaffarabad, Nagaland, Manipur, Mizoram and Tripura, Sub Himalayan West Bengal & Sikkim, Uttarakhand, West Madhya Pradesh and West Rajasthan.
- ❖ **Thunderstorm accompanied with lightning & gusty winds(30-40kmph)** likely at isolated places over Bihar, Jammu-Kashmir-Ladakh-Gilgit-Baltistan-Muzaffarabad, Jharkhand and Telangana.
- ❖ **Thunderstorm accompanied with Lightning** likely at isolated places over Arunachal Pradesh, Assam & Meghalaya, Chhattisgarh, East Uttar Pradesh, Gujarat State, Madhya Pradesh, Nagaland, Manipur, Mizoram and Tripura, Uttarakhand and Vidarbha.
- ❖ **Strong Surface Winds** likely at isolated places over Andhra Pradesh.
  - Squally wind with speed reaching 45 kmph to 55 kmph gusting to 65 kmph is likely to prevail along and off Somalia, Yemen & south Oman coasts, most parts of westcentral Arabian Sea & eastcentral Arabian Sea, many parts of southwest Arabian Sea, southern parts of north Arabian Sea.
  - Squally weather with wind speed reaching 40 - 50 kmph gusting to 60 kmph likely to prevail over many parts of eastcentral Arabian Sea & adjoining, some parts of westcentral Arabian Sea, many parts of southeast Arabian Sea & adjoining, some parts of southwest Arabian Sea, most parts of northeast Arabian Sea & adjoining, some parts of northwest Arabian Sea, along and off, Karnataka coasts, Comorin areas, over most parts of southwest Bay of Bengal & adjoining parts of southeast Bay of Bengal, over most parts of central & adjoining north Bay of Bengal, over Gulf of Mannar, along and off Sri Lanka coast.
  - Squally weather with wind speed 45 - 55 kmph gusting to 65 kmph likely to prevail along and off Gujarat, Konkan, Goa coasts and adjoining sea areas.

**\*Red color warning does not mean "Red Alert" Red color warning means "Take Action"**

**Forecast and warning for any day is valid from 0830 hours IST of day till 0830 hours IST of next day**

**For more details kindly visit <https://mausam.imd.gov.in> or contact 011-2434-4599**

**(Service to the nation since 1875)**



## 1 August (Day 6)

- ❖ **Heavy to Very Heavy Rainfall with isolated Extremely Heavy Rainfall** likely at isolated places over Nagaland, Manipur, Mizoram and Tripura.
- ❖ **Heavy to Very Heavy Rainfall** likely at isolated places over Assam & Meghalaya.
- ❖ **Heavy Rainfall** likely at isolated places over Arunachal Pradesh, Sub Himalayan West Bengal & Sikkim and Uttarakhand.
- ❖ **Thunderstorm accompanied with lightning & gusty winds(30-40kmph)** likely at isolated places over Bihar.
- ❖ **Thunderstorm accompanied with Lightning** likely at isolated places over East Uttar Pradesh and Uttarakhand.

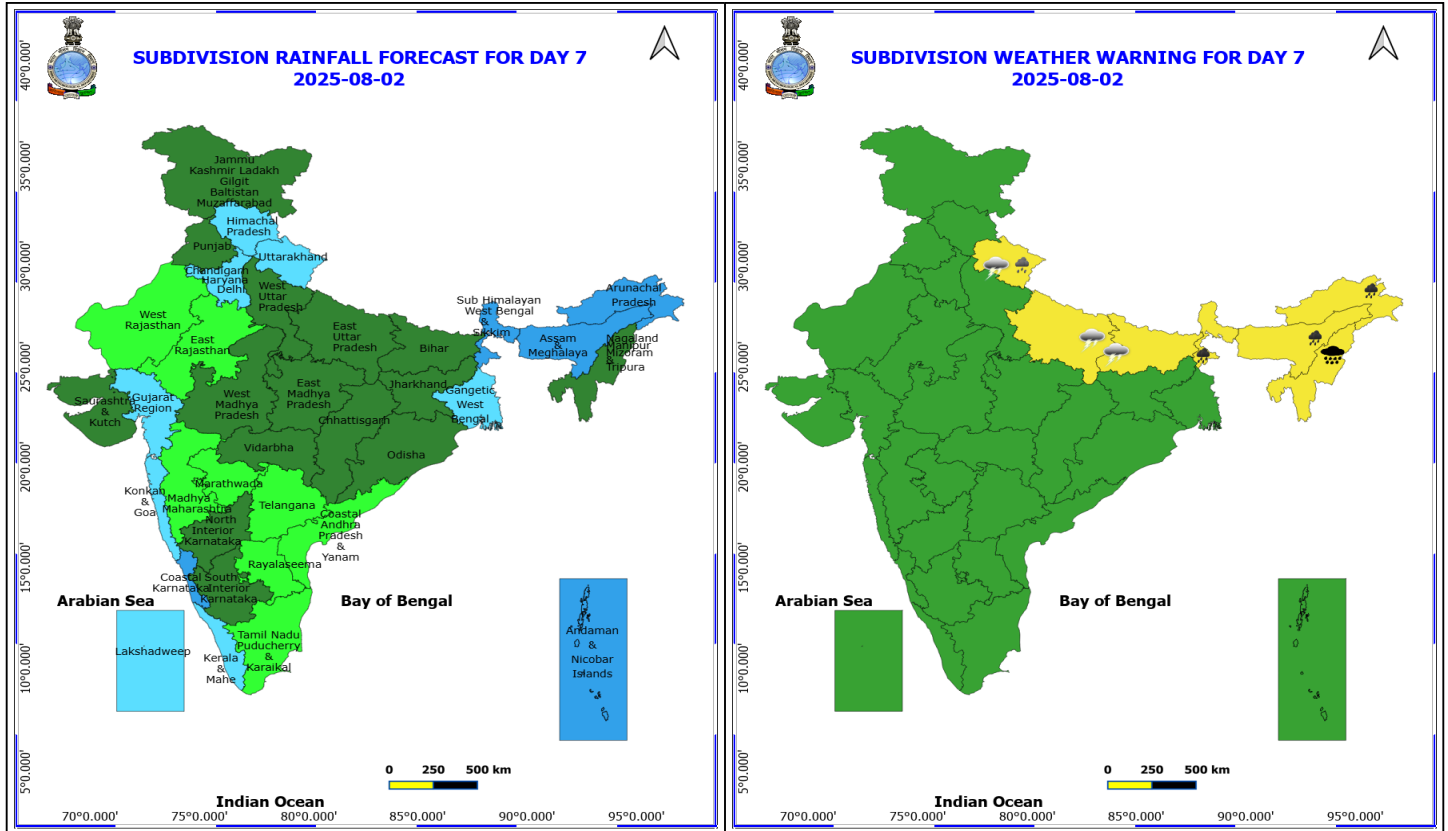
**No Fishermen Warning**

**\*Red color warning does not mean "Red Alert" Red color warning means "Take Action"**

Forecast and warning for any day is valid from 0830 hours IST of day till 0830 hours IST of next day

For more details kindly visit <https://mausam.imd.gov.in> or contact 011-2434-4599

(Service to the nation since 1875)



## 2 August (Day 7)

- ❖ **Heavy to Very Heavy Rainfall with isolated Extremely Heavy Rainfall** likely at isolated places over Nagaland, Manipur, Mizoram and Tripura.
- ❖ **Heavy to Very Heavy Rainfall** likely at isolated places over Arunachal Pradesh, Assam & Meghalaya and Sub Himalayan West Bengal & Sikkim.
- ❖ **Heavy Rainfall** likely at isolated places over Uttarakhand.
- ❖ **Thunderstorm accompanied with lightning & gusty winds(30-40kmph)** likely at isolated places over Bihar.
- ❖ **Thunderstorm accompanied with Lightning** likely at isolated places over East Uttar Pradesh and Uttarakhand.

**No Fishermen Warning**

**\*Red color warning does not mean "Red Alert" Red color warning means "Take Action"**

Forecast and warning for any day is valid from 0830 hours IST of day till 0830 hours IST of next day

For more details kindly visit <https://mausam.imd.gov.in> or contact 011-2434-4599

(Service to the nation since 1875)

## Flash Flood Warnings

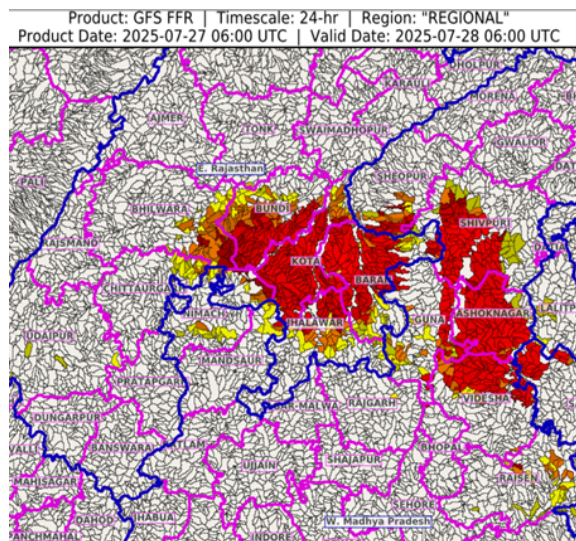
24 hours Outlook for the Flash Flood Risk (FFR) till 1130 IST of 28-07-2025 :

**Low to Moderate flash flood risk** likely over few watersheds & neighbourhoods of following Met Sub-divisions during next 24 hours.

**East Rajasthan** - Baran, Bhilwara, Bundi, Chittaurgarh, Jhalawar, Kota and Udaipur districts.

**West Madhya Pradesh** - Ashoknagar, Guna, Mandsaur, Nimach, Raisen, Rajgarh, Sheopur, Shivpuri and Videsha districts.

Surface runoff/ Inundation may occur at some fully saturated soils & low-lying areas over Area of Concern (AoC) as shown in map due to expected rainfall occurrence in next 24 hours.



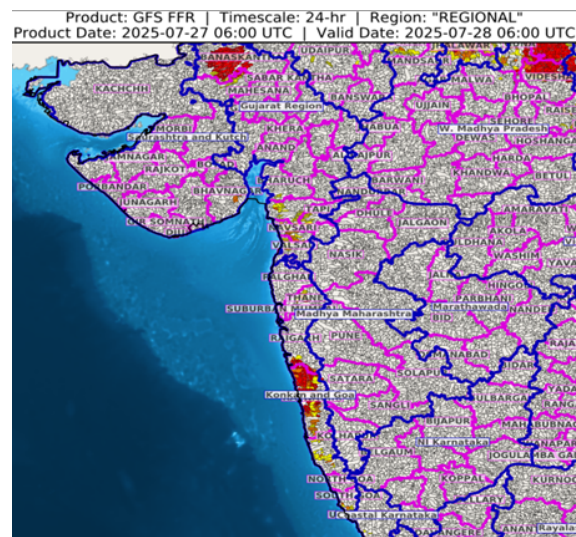
FFR) till 1130 IST of 28-07-2025 :

**Low to Moderate flash flood risk** likely over few watersheds & neighbourhoods of following Met Sub-divisions during next 24 hours.

**Gujarat Region** - Banaskantha, Bharuch, Mahesana, Navsari, Patan, Sabar Kantha, Surat, Tapi and Valsad districts.

**Konkan & Goa** - South Goa, Raigarh, Ratnagiri, Sindhudurg and Thane districts.

Surface runoff/ Inundation may occur at some fully saturated soils & low-lying areas over Area of Concern (AoC) as shown in map due to expected rainfall occurrence in next 24 hours.



24 hours Outlook for the Flash Flood Risk (FFR) till 1130 IST of 28-07-2025 :

**Low to Moderate flash flood risk** likely over few watersheds & neighbourhoods of following Met Sub-divisions during next 24 hours.

**Himachal Pradesh** - Kangra, Lahul&Spiti, Mandi and Sirmaur districts.

**Uttarakhand** - Almora, Bageshwar, Chamoli, Champawat, Dehradun, Nanital, Pauri Garhwal, Pithoragarh, Rudraprayag, Tehri Garwal and Uttarkashi districts.

**\*Red color warning does not mean "Red Alert" Red color warning means "Take Action"**

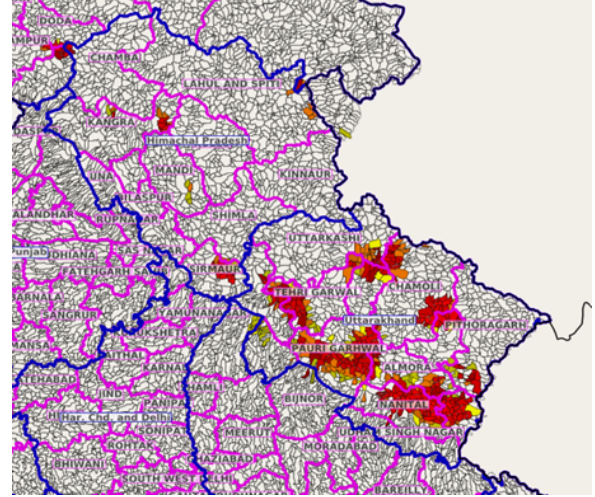
Forecast and warning for any day is valid from 0830 hours IST of day till 0830 hours IST of next day

For more details kindly visit <https://mausam.imd.gov.in> or contact 011-2434-4599

(Service to the nation since 1875)

Surface runoff/ Inundation may occur at some fully saturated soils & low-lying areas over Area of Concern (AoC) as shown in map due to expected rainfall occurrence in next 24 hours.

Product: GFS FFR | Timescale: 24-hr | Region: "INDIA"  
Product Date: 2025-07-27 06:00 UTC | Valid Date: 2025-07-28 06:00 UTC



24 hours Outlook for the Flash Flood Risk (FFR) till 1130 IST of 28-07-2025 :

Low to Moderate flash flood risk likely over few watersheds & neighbourhoods of following Met Sub-divisions during next 24 hours.

Arunachal Pradesh - Changlang, Dibang Valley, East Kameng, East Siang, Lohit, Papum-Pare, Tawang, Tirap, West Kameng, West Siang, Anjaw and Kurung Kumey districts.

Assam & Meghalaya - Cachar, Kamrup Rural, N.C Hills, Karimganj, East Garo Hills, East Khasi Hills, West Khasi Hills and Jaintia Hills districts.

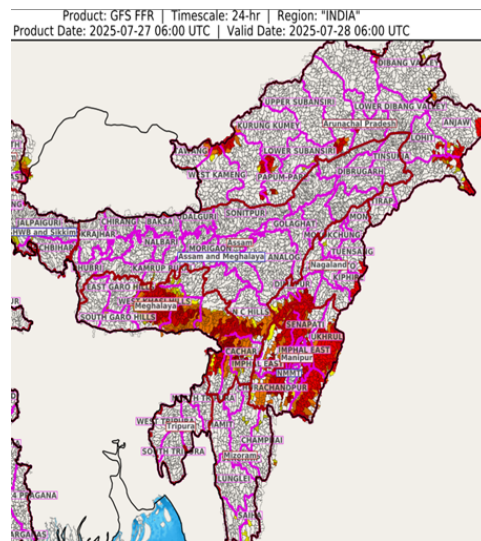
Nagaland Mizoram Manipur Tripura (NMMT) –

Manipur- Bishnupur, Chandel, Churachandpur, Imphal East, Imphal West, Senapati, Tamenglong, Thoubal, Ukhrul,

Mizoram- Aizawl, Champhai, Lawngtlai, Saiha,

**Nagaland-** Dimapur, Kiphire, Kohima, Peren and Tuensang districts.

Surface runoff/ Inundation may occur at some fully saturated soils & low-lying areas over Area of Concern (AoC) as shown in map due to expected rainfall occurrence in next 24 hours.





# Table-1

## 7 Days Rainfall Forecast

S.No.	Subdivision	27- Jul	28- Jul	29- Jul	30- Jul	31- Jul	1- Aug	2- Aug
		Day 1	Day 2	Day 3	Day 4	Day 5	Day 6	Day 7
1	ANDAMAN & NICOBAR ISLANDS	SCT	FWS	WS	WS	FWS	FWS	WS
2	ARUNACHAL PRADESH	WS	WS	FWS	FWS	FWS	WS	WS
3	ASSAM & MEHGHALAYA	WS	WS	FWS	FWS	FWS	WS	WS
4	N. M. M. & T.	WS	WS	FWS	FWS	FWS	WS	WS
5	S.H. WEST BENGAL & SIKKIM	FWS	FWS	FWS	FWS	WS	WS	WS
6	GANGETIC WEST BENGAL	FWS	WS	WS	WS	FWS	FWS	FWS
7	ODISHA	SCT	SCT	FWS	FWS	FWS	SCT	SCT
8	JHARKHAND	FWS	FWS	WS	WS	FWS	SCT	SCT
9	BIHAR	SCT	FWS	SCT	SCT	SCT	SCT	SCT
10	EAST UTTAR PRADESH	ISOL	SCT	FWS	FWS	SCT	SCT	SCT
11	WEST UTTAR PRADESH	SCT	FWS	SCT	SCT	SCT	SCT	SCT
12	UTTARAKHAND	WS	WS	WS	FWS	FWS	FWS	FWS
13	HARYANA, CHD & DELHI	ISOL	SCT	FWS	SCT	SCT	ISOL	FWS
14	PUNJAB	ISOL	ISOL	SCT	SCT	SCT	ISOL	SCT
15	HIMACHAL PRADESH	FWS	WS	WS	FWS	FWS	FWS	FWS
16	JAMMU AND KASHMIR AND LADAKH	SCT	SCT	FWS	WS	WS	FWS	SCT
17	WEST RAJASTHAN	FWS	FWS	SCT	SCT	FWS	SCT	ISOL
18	EAST RAJASTHAN	WS	WS	FWS	FWS	FWS	SCT	ISOL
19	WEST MADHYA PRADESH	WS	WS	WS	WS	WS	FWS	SCT
20	EAST MADHYA PRADESH	WS	WS	WS	WS	WS	FWS	SCT
21	GUJRAT REGION	WS	WS	WS	FWS	FWS	FWS	FWS
22	SAURASHTRA & KUTCH	WS	WS	WS	FWS	FWS	SCT	SCT
23	KONKAN & GOA	WS	WS	WS	WS	WS	WS	FWS
24	MADHYA MAHARASHTRA	FWS	SCT	FWS	SCT	SCT	ISOL	ISOL
25	MARATHWADA	SCT	ISOL	ISOL	ISOL	ISOL	ISOL	ISOL
26	VIDARBHA	WS	WS	WS	WS	FWS	FWS	SCT
27	CHATTISGARH	FWS	FWS	FWS	FWS	SCT	SCT	SCT
28	COASTAL ANDHRA PRADESH	SCT	ISOL	ISOL	ISOL	ISOL	ISOL	ISOL
29	TELANGANA	SCT	ISOL	ISOL	ISOL	ISOL	ISOL	ISOL
30	RAYALASEEMA	ISOL	ISOL	ISOL	ISOL	ISOL	ISOL	ISOL
31	TAMILNADU & PUDUCHERRY	ISOL	ISOL	ISOL	ISOL	ISOL	SCT	SCT
32	COSTAL KARNATAKA	WS	WS	WS	WS	WS	WS	WS
33	NORTH INTERIOR KARNATAKA	FWS	SCT	SCT	SCT	ISOL	ISOL	ISOL
34	SOUTH INTERIOR KARNATAKA	WS	SCT	SCT	SCT	SCT	SCT	SCT
35	KERALA	WS	WS	WS	WS	FWS	FWS	FWS
36	LAKSHDWEAP	WS	WS	WS	WS	FWS	FWS	FWS

Legend	Category	%Stations
WS	Widespread/Most Places	76-100
FWS	Fairly Widespread/Many Places	51-75
SCT	Scattered/ A Few Places	26-50
ISOL	Isolated Places	1-25
DRY	No Rain	0

\*Red color warning does not mean "Red Alert" Red color warning means "Take Action"

Forecast and warning for any day is valid from 0830 hours IST of day till 0830 hours IST of next day

For more details kindly visit <https://mausam.imd.gov.in> or contact 011-2434-4599

(Service to the nation since 1875)

Fig. 1: Maximum Temperatures Dated 2025-07-27

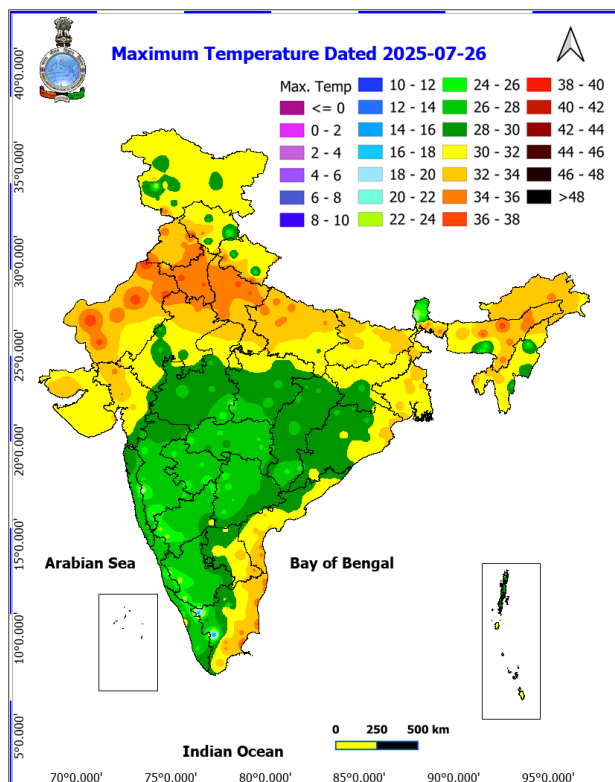


Fig. 2: Departure of Maximum Temp. Dated 2025-07-27

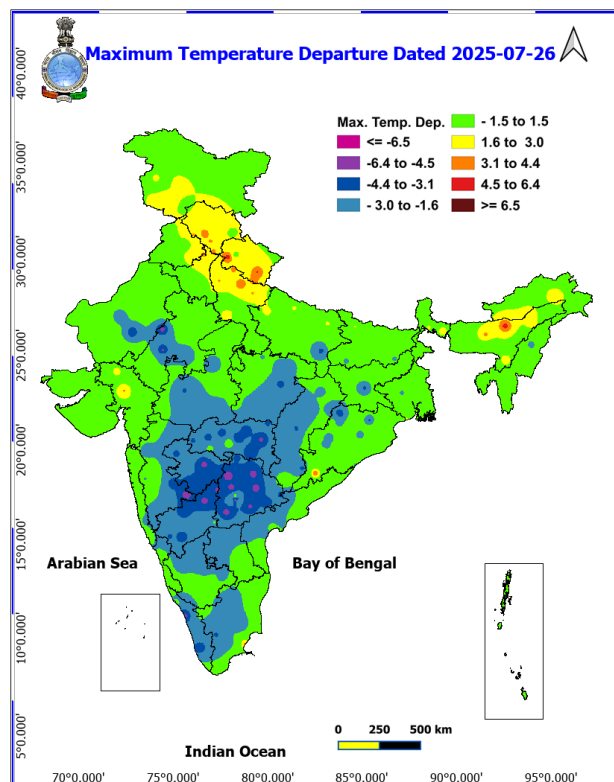


Fig. 3: Minimum Temperatures Dated 2025-07-27

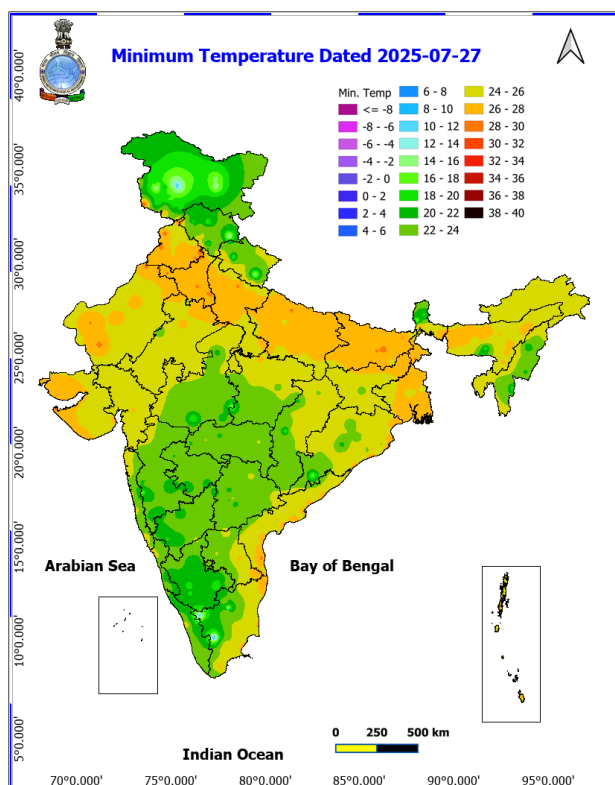
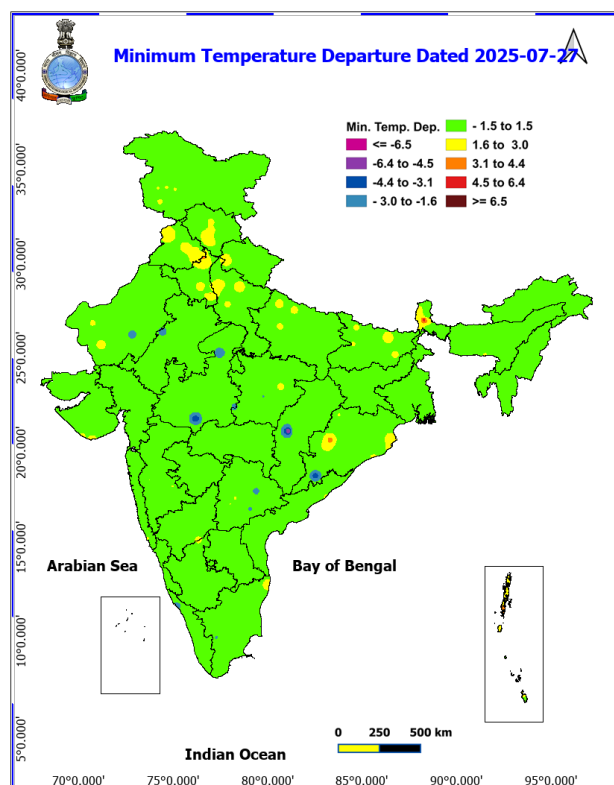
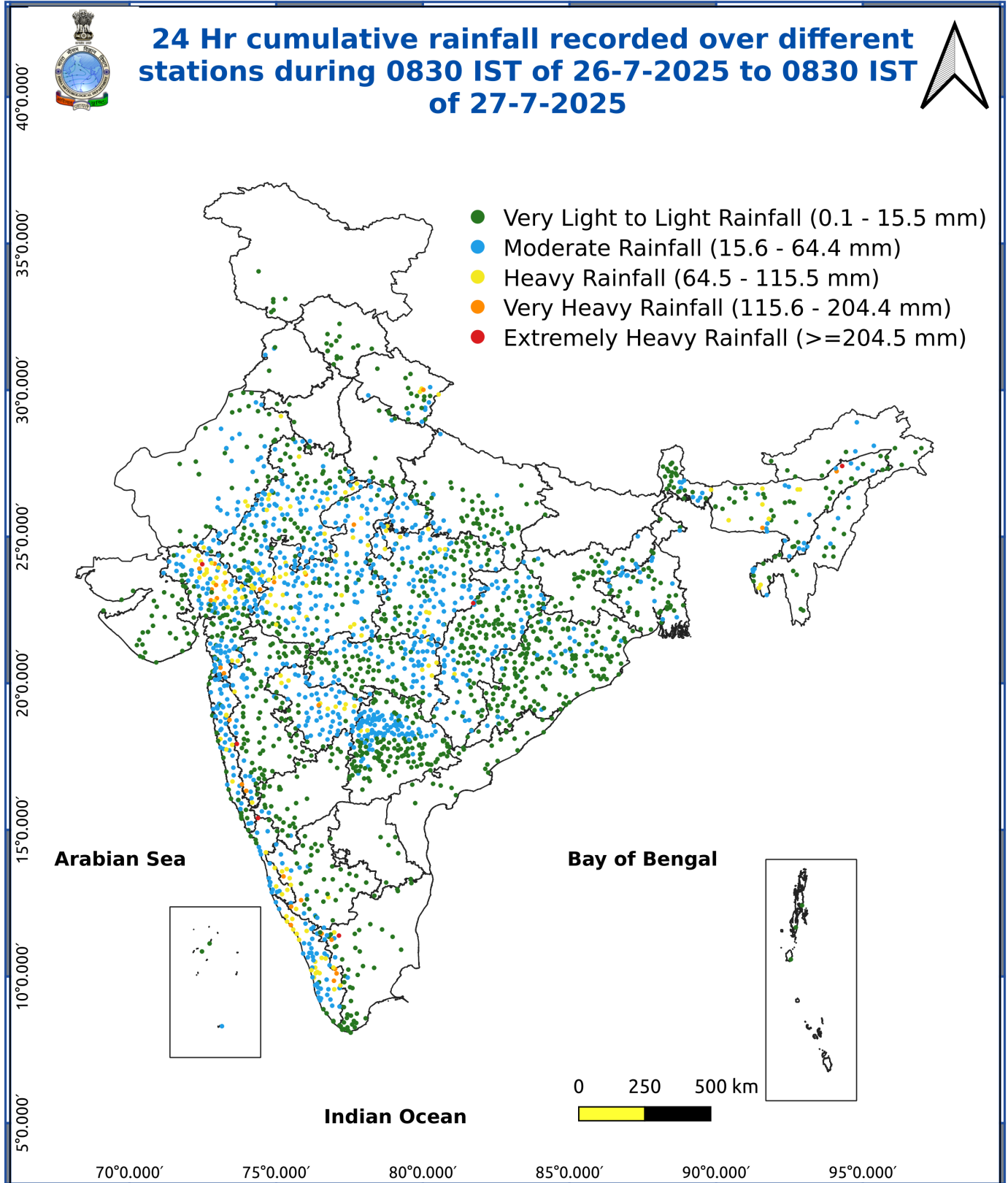


Fig. 4: Departure of Minimum Temp. Dated 2025-07-27





\*Red color warning does not mean "Red Alert" Red color warning means "Take Action"

Forecast and warning for any day is valid from 0830 hours IST of day till 0830 hours IST of next day

For more details kindly visit <https://mausam.imd.gov.in> or contact 011-2434-4599

(Service to the nation since 1875)

- **Extremely heavy rainfall** very likely at isolated places over Gujarat Region on 27<sup>th</sup>; East Rajasthan on 27<sup>th</sup> & 28<sup>th</sup>; Nagaland, Manipur, Mizoram & Tripura on 01<sup>st</sup> & 02<sup>nd</sup> August.
- Isolated **very heavy rainfall** over Ghat areas of Madhya Maharashtra, South Interior Karnataka on 27<sup>th</sup> & 28<sup>th</sup>; Saurashtra & Kutch, Konkan on 27<sup>th</sup>; Gujarat Region, West Uttar Pradesh on 28<sup>th</sup>; Himachal Pradesh on 29<sup>th</sup>; Uttarakhand during 28<sup>th</sup>-30<sup>th</sup>; Jammu & Kashmir on 30<sup>th</sup>; East Rajasthan during 27<sup>th</sup>-31<sup>st</sup>; Arunachal Pradesh, Assam & Meghalaya during 27<sup>th</sup> July-02<sup>nd</sup> August; West Madhya Pradesh, Coastal Karnataka during 27<sup>th</sup>-29<sup>th</sup>; East Madhya Pradesh on 28<sup>th</sup> & 29<sup>th</sup>; Sub-Himalayan West Bengal & Sikkim on 02<sup>nd</sup> August.

### Impact Expected

Localized Flooding of roads, water logging in low lying areas and closure of underpasses mainly in urban areas of the above region.

Occasional reduction in visibility due to heavy rainfall.

Disruption of traffic in major cities due to water logging in roads leading to increased travel time.

Minor damage to kutcha roads.

Possibilities of damage to vulnerable structure.

Localized Landslides/Mudslides/landslips/mudslips/landsinks/mudsinks.

Damage to horticulture and standing crops in some areas due to inundation.

It may lead to riverine flooding in some river catchments (for riverine flooding please visit Web page of CWC)

### Action Suggested

Check for traffic congestion on your route before leaving for your destination.

Follow any traffic advisories that are issued in this regard.

Avoid going to areas that face the water logging problems often.

Avoid staying in vulnerable structure.

### Agromet advisories for various parts of the country

#### Agromet advisories for likely impact of Heavy / Heavy to Very Heavy / Extremely Heavy Rainfall

**Maharashtra** - In **Konkan**, make arrangement to drain out excess water from rice, finger millet, turmeric, groundnut and newly planted coconut, arecanut, mango and cashew. Postpone transplanting of rice in **Raigad** and **Palghar** districts. In **Madhya Maharashtra**, postpone transplanting of rice in *ghat* areas of **Pune** and **Nashik** district. In **Marathwada**, make arrangements to drain out excess water from soybean, pearl millet, turmeric, sugarcane, orchards and vegetables. In **East Vidarbha**, postpone transplanting of rice and make arrangements for drainage of excess water from rice nurseries, orchards, vegetable nurseries, transplanted rice fields and already sown *kharif* crops like soybean, cotton and pigeon pea.

In **Madhya Pradesh**, provide adequate drainage in the fields of soybean, rice, maize and pigeon pea in **Vindhyan**

**\*Red color warning does not mean "Red Alert" Red color warning means "Take Action"**

Forecast and warning for any day is valid from 0830 hours IST of day till 0830 hours IST of next day

For more details kindly visit <https://mausam.imd.gov.in> or contact 011-2434-4599

(Service to the nation since 1875)

**Plateau Zone**; rice, maize and soybean in **Kymore Plateau and Satpura Hill Zone**; rice and vegetables in **Bundelkhand Zone**; maize, soybean, cotton, sugarcane and vegetables in **Satpura Plateau Zone**; rice, soybean, maize, sugarcane and vegetables in **Central Narmada Valley Zone**; soybean, pigeon pea, cotton and vegetables in **Nimar Valley Zone** and soybean, maize, cotton and vegetables in **Malwa Plateau Zone**. In **Gird Zone**, postpone sowing of pearl millet and make arrangement to drain out excess water in fields of soybean, pigeon pea and transplanted rice.

In **Chhattisgarh**, drain out excess water from rice nurseries, soybean, pigeon pea, green gram, black gram, maize, sugarcane and vegetables in **Plain Zone** and rice, minor millets, maize, pulses and oilseeds in **Bastar Plateau Zone**. In **Northern Hill Zone**, postpone sowing of pigeon pea. Drain out excess water from the fields of transplanted rice, pulses and vegetables. Undertake staking / propping in banana and papaya.

**Rajasthan** - In **Sub Humid Southern Plain and Aravali Hill Zone** and **Flood Prone Eastern Plain Zone**, postpone sowing of green gram, pearl millet, cluster bean and sesame; make arrangement for drainage and remove excess water from already sown fields. In **Southern Humid Plain Zone**, postpone sowing of maize during heavy rains and ensure proper drainage to remove excess water in cotton and soybean during the germination stage. In **Southeastern Humid Plain zone**, make provision to drain out excess water from rice nurseries, maize, soybean and black gram at early vegetative stage.

In **Gujarat**, make necessary arrangements to drain out excess water from sugarcane cotton, pigeon pea, transplanted rice and vegetables in **South Gujarat Zone**; sugarcane, rice and vegetables in **South Gujarat Heavy Rainfall Zone**; transplanted rice, cotton, pearl millet, pigeon pea, soybean and vegetables in **Middle Gujarat Zone**. Drain out excess water from ground nut, maize, pearl millet, green gram and sesame in **North Gujarat Zone**.

In **Odisha**, postpone sowing of maize and transplanting of vegetables and drain out excess water from rice nurseries and fields of transplanted rice, maize, pulses, vegetable and plantation crops in **North Central Plateau Zone**. In **Mid Central Table Land Zone**, postpone sowing of sesame and groundnut and drain out excess water from the fields of rice, sugarcane, maize, sesame, groundnut, vegetables and plantations of banana and papaya. Drain out excess water from the fields of rice, maize, vegetables and fruit orchards in **West Central Table land Zone**; rice nurseries and transplanted rice fields, maize, pulses and vegetables in **North Eastern Plateau Zone**.

**Jharkhand** - In **Western Plateau Zone**, start sowing of pigeon pea crop after cessation of the current spell of heavy rainfall. Avoid irrigation in standing crops and provide drainage facilities in fields of direct seeded rice, finger millet, maize, pigeon pea and green gram.

In **Kerala**, provide adequate drainage in fields of rice, coconut, banana and ginger. Postpone nursery / transplanting of rice. Provide staking in vegetables.

In **Karnataka**, postpone nursery sowing of rice and provide drainage in arecanut fields and banana orchards in **Coastal Zone**. In **Hill Zone**, make arrangements to drain out excess water from rice nurseries, fields of maize, cotton, ginger and plantations of arecanut. In **Southern Transition Zone**, provide proper drainage in arecanut and coconut fields. In **Southern Dry Zone**, provide staking / support to maize, tomato and banana crop. Ensure proper drainage to prevent waterlogging especially in rice, vegetables and spice crops.

In **Telangana**, ensure proper drainage facilities in the fields of rice, maize, groundnut, cotton, soybean, red gram and vegetables.

In **Uttarakhand**, maintain proper drainage channels in fields of rice in **Bhabar and Tarai Zone**, black gram in **Hill Zone** and rice, barnyard millet, finger millet and cucumber in **Sub Humid SubTropic Zone**.

#### Livestock / Fishery

Keep the animals inside the shed during heavy rainfall and provide them balanced feed.

Store feed and fodder in a safe place to prevent spoilage.

**\*Red color warning does not mean "Red Alert" Red color warning means "Take Action"**

Forecast and warning for any day is valid from 0830 hours IST of day till 0830 hours IST of next day

For more details kindly visit <https://mausam.imd.gov.in> or contact 011-2434-4599

(Service to the nation since 1875)

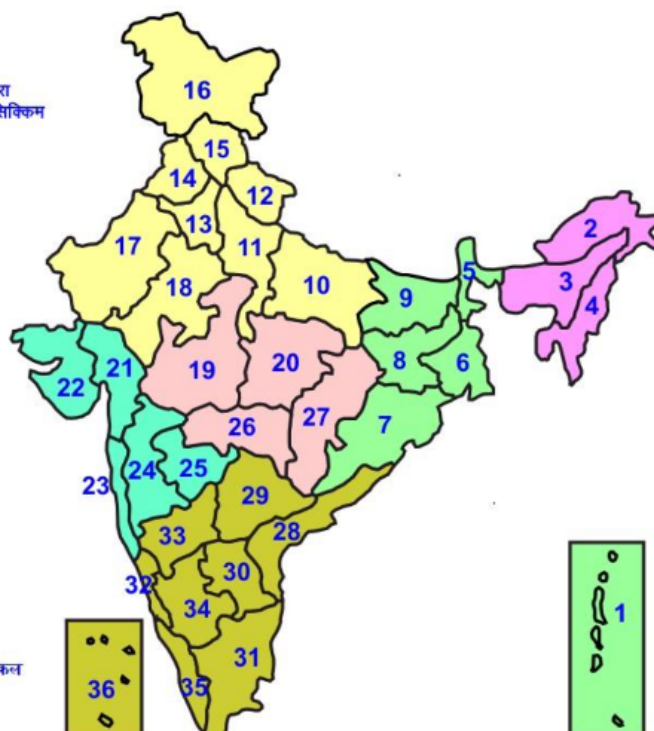
Construct an outlet with proper netting around the ponds to drain out excess water, thereby preventing fish from escaping in case of overflow.

**Agromet advisories for likely impact of Thunderstorm / Gusty Winds / Squally Winds**

Provide mechanical support to horticultural crops and staking or support to vegetables and young fruit plants / fruit-bearing plants to avoid lodging due to strong winds.

## LEGENDS

- 1 अंडमान और निकोबार द्वीप समुह
- 2 अरुणाचल प्रदेश
- 3 असम और मेघालय
- 4 नागालैंड मनीपुर मीजोरम और त्रिपुरा
- 5 उप हिमालय पश्चिम बंगाल एवं सिक्किम
- 6 पश्चिम बंगाल
- 7 ओडिसा
- 8 झारखंड
- 9 बिहार
- 10 पूर्वी उत्तर प्रदेश
- 11 पश्चिम उत्तर प्रदेश
- 12 उत्तराखंड
- 13 हरियाणा चंडीगढ़ एवं दिल्ली
- 14 पंजाब
- 15 हिमाचल प्रदेश
- 16 जम्मू एवं कश्मीर एवं लद्दाख
- 17 पश्चिम राजस्थान
- 18 पूर्वी राजस्थान
- 19 पश्चिम मध्य प्रदेश
- 20 पूर्वी मध्य प्रदेश
- 21 गुजरात क्षेत्र
- 22 सौराष्ट्र एवं कच्छ
- 23 कोंकण एवं गोवा
- 24 मध्य महाराष्ट्र
- 25 मराठावाड़ा
- 26 विदर्भ
- 27 छत्तीसगढ़
- 28 तटीय आंध्र प्रदेश एवं यनम
- 29 तेलंगाना
- 30 रायलसीमा
- 31 तमिलनाडु, पुदुचेरी एवं कराईकल
- 32 तटिय कर्नाटक
- 33 आंतरिक उत्तरी कर्नाटक
- 34 आंतरिक दक्षिणी कर्नाटक
- 35 केरल एवं माहे
- 36 लक्षद्वीप



1. Andaman & Nicobar Islands
2. Arunachal Pradesh
3. Assam & Meghalaya
4. Nagaland, Manipur, Mizoram & Tripura
5. Sub-Himalayan West Bengal & Sikkim
6. Gangetic West Bengal
7. Orissa
8. Jharkhand
9. Bihar
10. East Uttar Pradesh
11. West Uttar Pradesh
12. Uttarakhand
13. Haryana, Chd & Delhi
14. Punjab
15. Himachal Pradesh
16. Jammu & Kashmir and Ladakh
17. West Rajasthan
18. East Rajasthan
19. West Madhya Pradesh
20. East Madhya Pradesh
21. Gujarat
22. Saurashtra
23. Konkan & Goa
24. Madhya Maharashtra
25. Marathawada
26. Vidharbha
27. Chhattisgarh
28. Coastal Andhra Pradesh & Yanam
29. Telangana
30. Rayalaseema
31. Tamilnadu, Puducherry & Karaikal
32. Coastal Karnataka
33. North Interior Karnataka
34. South Interior Karnataka
35. Kerala & Mahe
36. Lakshadweep

## SPATIAL DISTRIBUTION (% of Stations reporting)


% Stations	Category	% Stations	Category
76-100	Widespread (WS/Most Places)	26-50	Scattered (SCT/ A Few Places)
51-75	Fairly Widespread (FWS/ Many Places)	1-25	Isolated (ISOL)


## Subdivision Colour


- NO WARNING
- WATCH (BE UPDATED)
- ALERT (BE PREPARED TO TAKE ACTION)
- WARNING (TAKE ACTION)


## Probabilistic Forecast


Terms	Probability of Occurrence (%)
Unlikely	< 25
Likely	25 - 50
Very Likely	50 - 75
Most Likely	> 75


-  Heavy Rain


 Thunderstorm & Lightning


 Strong surface winds


 Cold Wave


 Hot & Humid


 Very Heavy Rain


 Hailstorm


 Heat Wave


 Cold Day


 Extremely Heavy Rain


 Dust Storm


 Hot Day

 Ground Frost

 Heavy Snow

 Dust Raising Winds

 Warm Night

 Fog

\*Red color warning does not mean "Red Alert" Red color warning means "Take Action"

Forecast and warning for any day is valid from 0830 hours IST of day till 0830 hours IST of next day

For more details kindly visit <https://mausam.imd.gov.in> or contact 011-2434-4599

(Service to the nation since 1875)

## LEGENDS

### WARNING

<b>WARNING (TAKE ACTION)</b>
<b>ALERT (BE PREPARED)</b>
<b>WATCH (BE UPDATED)</b>
<b>NO WARNING (NO ACTION)</b>

### Probabilistic Forecast

Terms	Probability of Occurrence (%)
Unlikely	< 25
Likely	25 - 50
Very Likely	50 - 75
Most Likely	> 75



Heavy: 64.5 to 115.5 mm/cm \*  
Very Heavy: 115.6 to 204.4 mm/cm \*  
Extremely Heavy: > 204.4 mm/cm \*



When maximum temperature of a station reaches  $\geq 40^{\circ}\text{C}$  for plains and  $\geq 30^{\circ}\text{C}$  for hilly regions  
(a) Based on Departure from normal

Heat Wave: Maximum Temperature Departure from normal  $4.5^{\circ}\text{C}$  to  $6.4^{\circ}\text{C}$ .  
Severe Heat Wave: Maximum Temperature Departure from normal  $\geq 6.5^{\circ}\text{C}$

(b). Based on Actual maximum temperature

Heat Wave: When actual maximum temperature  $\geq 45^{\circ}\text{C}$ .  
Severe Heat Wave: When actual maximum temperature  $\geq 47^{\circ}\text{C}$

(c). Criteria for heat wave for coastal stations

When maximum temperature departure is  $> 4.5^{\circ}\text{C}$  from normal. Heat Wave may be described provided maximum temperature  $\geq 37^{\circ}\text{C}$



When maximum temperature remains  $40^{\circ}\text{C}$

Warm Night: When minimum temperature departure  $4.5^{\circ}\text{C}$  to  $6.4^{\circ}\text{C}$ .  
Severe Warm Night: When minimum temperature departure  $> 6.4^{\circ}\text{C}$ .



When minimum temperature of a station  $\leq 10^{\circ}\text{C}$  for plains and  $\leq 0^{\circ}\text{C}$  for hilly regions.

(a). Based on departure

Cold Wave: Minimum Temperature Departure from normal  $-4.5^{\circ}\text{C}$  to  $-6.4^{\circ}\text{C}$ .  
Severe Cold Wave: Minimum Temperature Departure from normal  $\leq -6.5^{\circ}\text{C}$

(b) Based on actual Minimum Temperature (for Plains only)

Cold Wave: When Minimum Temperature is  $\leq 4.0^{\circ}\text{C}$   
Severe Cold Wave: When Minimum Temperature is  $\leq 2.0^{\circ}\text{C}$

(c) For Coastal Stations

When Minimum Temperature departure is  $\leq -4.5^{\circ}\text{C}$  & actual Minimum Temperature is  $\leq 15^{\circ}\text{C}$



When minimum temperature of a station  $\leq 10^{\circ}\text{C}$  for plains and  $\leq 0^{\circ}\text{C}$  for hilly regions  
Based on departure

Cold Day: Maximum Temperature Departure from normal  $-4.5^{\circ}\text{C}$  to  $-6.4^{\circ}\text{C}$ .  
Severe Cold Day: Maximum Temperature Departure from normal  $\leq -6.5^{\circ}\text{C}$



Phenomenon of small droplets suspended in air and the horizontal visibility  $< 1\text{km}$

Moderate Fog: When the visibility between 500-200 metres  
Dense Fog: when the visibility between 50-200 metres  
Very Dense Fog: when the visibility  $< 50$  metres



Sudden electrical discharges manifested by a flash of light (Lightning) and a sharp rumbling sound (thunder)



An ensemble of particles of dust or sand energetically lifted to great heights by a strong and turbulent wind.



Ice deposits on ground

Air temperature  $\leq 4^{\circ}\text{C}$  (over Plains)



A strong wind that rises suddenly, lasts for at least 1 minute.

Moderate: Wind speed 52-61 kmph  
Severe: Wind speed 62-87 kmph  
Very Severe: Wind speed  $> 87$  kmph



Effect of various waves in the sea over specific area

Rough to very rough: Wind speed 41-62 kmph (22-33 knots) & Wave height 2.5-6 metre  
High to very high: Wind speed 63-117 kmph (34-63 knots) & Wave height 6-14 metre  
Phenomenal: Wind speed  $> 117$  kmph ( $> 63$  knots) & Wave height  $> 14$  metre



Cyclonic Storm: Wind speed 62-87 kmph (34-47 knots)

Severe Cyclonic Storm: Wind speed 88-117 kmph (48-63 knots)

Very Severe Cyclonic Storm: Wind speed 118-165 kmph (64-89 knots)

Extremely Severe Cyclonic Storm: Wind speed 166-220 kmph (90-119 knots)

Super Cyclone Storm: Wind speed  $> 220$  kmph ( $> 119$  knots)

\*Red color warning does not mean "Red Alert" Red color warning means "Take Action"

Forecast and warning for any day is valid from 0830 hours IST of day till 0830 hours IST of next day

For more details kindly visit <https://mausam.imd.gov.in> or contact 011-2434-4599

(Service to the nation since 1875)