

2025-07-05

Time of Issue: 13:26:00 hours IST
(Mid-Day)

ALL INDIA WEATHER SUMMARY AND FORECAST BULLETIN

Significant Weather Features

Weather Forecast & Warnings

East & Central India:

- Isolated **heavy to very heavy rainfall** very likely to continue over Madhya Pradesh during 05th-11th July with **Extremely heavy rainfall (≥ 21 cm)** at isolated places over East Madhya Pradesh on 05th July.
- Isolated **heavy rainfall** over Jharkhand, Gangetic West Bengal, Odisha, Vidarbha, Chhattisgarh during 05th-08th; Sub-Himalayan West Bengal & Sikkim on 05th and during 08th-10th; Andaman & Nicobar Islands on 06th July with **very heavy rainfall** over Chhattisgarh during 05th-07th; Vidarbha on 07th & 08th; Gangetic West Bengal, Jharkhand, Odisha on 05th & 06th July.
- Light/moderate rainfall at most/many places accompanied with thunderstorm, lightning & gusty winds speed reaching 30-40 kmph likely over the region during next 7 days.

Northwest India:

- Extremely heavy rainfall (≥ 21 cm)** very likely at isolated places over Himachal Pradesh on 06th July.
- Isolated **heavy rainfall** likely over Uttarakhand, East Rajasthan during 05th-11th July; East Uttar Pradesh, West Rajasthan on 05th, 06th, 10th & 11th; Haryana, Chandigarh, Punjab, Uttar Pradesh during 05th-10th; Jammu & Kashmir, Himachal Pradesh during 05th-09th July with **very heavy rainfall over Himachal Pradesh on 07th & 08th; Uttarakhand during 05th-07th; Punjab, Haryana on 06th & 07th; East Rajasthan on 05th, 09th & 10th July.**
- Light/moderate rainfall at most/many places accompanied with thunderstorm, lightning likely over western Himalayan region and some/many places over the plains during next 7 days.

West India:

- Extremely heavy rainfall (≥ 21 cm)** very likely at isolated places over Ghat areas of Madhya Maharashtra on 06th & 07th July.
- Heavy to very heavy rainfall** likely at isolated places over Konkan & Goa, Ghat areas of Madhya Maharashtra, Gujarat region during next 7 days; Saurashtra & Kutch during 05th-07th and **heavy rainfall** over Marathwada on 06th & 07th July.
- Light/moderate rainfall at most/many places accompanied with **thunderstorm, lightning & gusty winds speed reaching 30-40 kmph** likely over the region during next 7 days.

Northeast India:

Light/moderate rainfall at most places accompanied with **thunderstorm, lightning and isolated heavy rainfall** likely to continue over Northeast India during next 7 days with very heavy rainfall over Meghalaya 05th July.

South Peninsular India:

- Isolated **heavy rainfall** likely over Tamil Nadu on 05th; Kerala & Mahe on 05th, 06th and during 09th-11th; Interior Karnataka on 05th & 06th July, Coastal Karnataka on 05th, 06th, 10th & 11th July.
- Strong surface winds** (speed reaching 40-50 kmph) very likely over South Peninsular India during next 5 days.
- Light/moderate rainfall at many/some places over Kerala & Mahe, Lakshadweep, Karnataka, Telangana; isolated to scattered rainfall accompanied with isolated **thunderstorm, lightning** over Coastal Andhra Pradesh & Yanam, Tamil Nadu, Puducherry & Karaikal and Rayalaseema during next 7 days.

***Red color warning does not mean "Red Alert" Red color warning means "Take Action"**

Forecast and warning for any day is valid from 0830 hours IST of day till 0830 hours IST of next day

For more details kindly visit <https://mausam.imd.gov.in> or contact 011-2434-4599

(Service to the nation since 1875)



Total suspension of fishing operations is suggested over above mentioned areas and dates.

Main Weather Observations:

❖ **Rainfall distribution** (from 0830 hours IST of yesterday to 0830 hours IST of today): **at most places** over Arunachal Pradesh, Assam & Meghalaya, Nagaland, Manipur, Mizoram & Tripura, Sub Himalayan West Bengal & Sikkim, Gangetic West Bengal, East Madhya Pradesh, Gujarat Region, Saurashtra & Kutch, Konkan & Goa, Chhattisgarh and Kerala & Mahe; **at many places** over Andaman & Nicobar Islands, Himachal Pradesh, East Rajasthan, West Madhya Pradesh and Madhya Maharashtra; **at a few places** over Haryana-Chandigarh-Delhi, Punjab, Coastal Andhra Pradesh & Yanam and Lakshadweep; **at isolated places** over Jammu-KashmirLadakh-Gilgit-Baltistan-Muzaffarabad, West Rajasthan, Marathwada, Rayalaseema and Tamil Nadu, Puducherry & Karaikal; **Dry** over rest of the country.

❖ **Significant rainfall recorded(in cm)** (from 0830 hours IST of yesterday to 0830 hours IST of today): **East Madhya Pradesh:** Rithi (dist Katni) 23; Niwas (dist Mandla) 19; Bijadandi (dist Mandla) 18; Amanganj (dist Panna) 17; Narayanganj (dist Mandla), Umariyapan (dist Katni) 16 Each; Kumdam (dist Jabalpur) 15; Nowrozabad (dist Umari) 14; Chandia (dist Umari), Bijawar (dist Chhatarpur), Bilaspur (dist Umari) 13 Each; Dindori-aws (dist Dindori), Raipura (dist Panna) 12 Each; Jabalpur-aws (dist Jabalpur), Deori (dist Sagar), Jabera (dist Damoh), Shahpura (dist Dindori), Shahnagar (dist Panna), Niwari (dist Niwari), Dheemakheda (dist Katni), Panagar (dist Jabalpur) 11 Each; Gonour (dist Panna), Mohgaon (dist Mandla), Channodi (dist Shahdol) 10 Each; Damoh-aws (dist Damoh), Pali (dist Umari), Palera (dist Tikamgarh), Mehadwani (dist Dindori) 9 Each; Chahtarpur-aws (dist Chhatarpur), Narsinghpur-aws (dist Narsinghpur), Umari-aws (dist Umari), Jaithari (dist Anuppur), Sihora (dist Jabalpur), Kesli (dist Sagar), Chhapara (dist Seoni), Sleemanabad (dist Katni), Simariya (dist Panna) 8 Each; Patera (dist Damoh), Bajag (dist Dindori), Pawai (dist Panna), Budhar (dist Shahdol), Bahoriband (dist Katni), Bargi (dist Jabalpur), Karkeli (dist Umari), Ranjhi (dist Jabalpur) 7 Each; **West Madhya Pradesh:** Sheopur-aws (dist Sheopur) 17; Bhitwar (dist Gwalior) 14; Badoda (dist Sheopur) 12; Gairatgang (dist Raisen), Narwar (dist Shivpuri) 10 Each; Chinor (dist Gwalior) 9; Salwani (dist Raisen), Karera (dist Shivpuri) 8 Each; Chanderi (dist Ashoknagar), Shivpuri (dist Shivpuri) 7 Each; **East Rajasthan:** Indergarh SR (dist Bundi) 14; Bari (dist Dholpur) 7; **Gujarat Region:** Palsana (dist Surat) 10; Kankrej (dist Banaskantha) 9; Vapi (dist Valsad), Valsad (dist Valsad) 7 Each; **Madhya Maharashtra:** Radhanagari (dist Kolhapur), Gaganbawada (dist Kolhapur) 10 Each; Lonavala ARG (dist Pune) 9; Shahuwadi (dist Kolhapur) 7; **Gangetic West Bengal:** Basirhat(pt) (dist North 24 Parganas) 10; Kansabati Dam (dist Bankura), Labpur (dist Birbhum), Mangalkote (dist Purba Bardhaman) 8 Each; **Sub Himalayan West Bengal & Sikkim:** Chel (dist Jalpaiguri) 10; Ghish (dist Jalpaiguri), Washabari Tea Estate (dist Jalpaiguri) 9 Each; Neora (dist Jalpaiguri) 8; Bhutanghat (dist Alipurduar) 7; **Chhattisgarh:** Karpawand (dist Bastar) 9; Patna (dist Koriya) 8; **Konkan & Goa:** Matheran (dist Raigad), Rajapur (dist Ratnagiri), Lanja (dist Ratnagiri) 9 Each; Sawantwadi (dist Sindhudurg) 8; Murbad (dist Thane), Ponda (dist North Goa), Kankavli (dist Sindhudurg), Savarde-arg (dist Ratnagiri) 7 Each; **Saurashtra & Kutch:** Porbandar (dist Porbandar), Lakhtar (dist Surendranagar), Kalyanpur (dist Devbhoomi Dwarka) 9 Each; Okha (dist Devbhoomi Dwarka) 8; Gadhda (dist Botad), Sayla (dist Surendranagar) 7 Each; **Haryana-Chandigarh-Delhi:** Rohtak (dist Rohtak) 9; Rohtak AWS (dist Rohtak) 7; **Assam & Meghalaya:** Chandrapur ARG (dist Kamrup (rural)) 8; Mawsynram (dist East Khasi Hills) 7; **Jammu-KashmirLadakh-Gilgit-Baltistan-Muzaffarabad:** Bakore ARG (dist Jammu) 8; **Kerala & Mahe:** Panathur AWS (dist Kasargod) 7; **Punjab:** Madhopur (dist Pathankot) 7.

❖ **Heavy Rainfall observed** (from 0830 hours IST of yesterday to 0830 hours IST of today): **Extremely heavy rain** at isolated places over East Madhya Pradesh. **Heavy to very heavy rain** at isolated places over East Rajasthan, West Madhya Pradesh and East Madhya Pradesh. **Heavy rain** at isolated places over Assam & Meghalaya, Sub Himalayan West Bengal & Sikkim, Gangetic West Bengal, Haryana-Chandigarh-Delhi, Punjab, Jammu-KashmirLadakh-Gilgit-Baltistan-Muzaffarabad, Gujarat Region, Saurashtra & Kutch, Konkan & Goa, Madhya Maharashtra, Chhattisgarh and Kerala & Mahe.

❖ **Minimum Temperature Departures (as on 05-07-2025):** **markedly above normal(> 5.1°C)** at most places over Himachal Pradesh; at few places over Jammu-KashmirLadakh-Gilgit-Baltistan-Muzaffarabad; at isolated places over Assam & Meghalaya, Bihar, East Uttar Pradesh, West Uttar Pradesh and West Madhya Pradesh. **appreciably above normal(3.1°C to 5.0°C)** at few places over East Madhya Pradesh; at isolated places over Andaman & Nicobar Islands, Sub Himalayan West Bengal & Sikkim, Odisha, Punjab, West Rajasthan, Gujarat Region and Saurashtra & Kutch. **above normal(1.6°C to 3.0°C)** at many places over Lakshadweep; at few places over Rayalaseema; at isolated places over Nagaland, Manipur, Mizoram & Tripura, Gangetic West Bengal, Jharkhand, Uttarakhand, Haryana-Chandigarh-Delhi, Madhya Maharashtra, Coastal Andhra Pradesh & Yanam and Tamil Nadu, Puducherry & Karaikal. **near normal(-1.5°C to 1.5°C)** at many places over East Rajasthan and Kerala & Mahe; at most places over Arunachal Pradesh, Konkan & Goa, Marathwada, Vidarbha, Chhattisgarh, Telangana, Coastal Karnataka, North Interior Karnataka and South Interior Karnataka. **The lowest minimum temperature** of 18.2°C is reported at KHARGONE-

*Red color warning does not mean "Red Alert" Red color warning means "Take Action"

Forecast and warning for any day is valid from 0830 hours IST of day till 0830 hours IST of next day

For more details kindly visit <https://mausam.imd.gov.in> or contact 011-2434-4599

(Service to the nation since 1875)

OBS (MADHYA PRADESH) over the Plains of India.

❖ **Maximum Temperature Departures (as on 04-07-2025):** **markedly above normal(> 5.1°C)** at many places over Jammu-Kashmir-Ladakh-Gilgit-Baltistan-Muzaffarabad; at few places over Himachal Pradesh. **appreciably above normal(3.1°C to 5.0°C)** at isolated places over Odisha, West Uttar Pradesh, West Rajasthan, Coastal Andhra Pradesh & Yanam, Rayalaseema and Tamil Nadu, Puducherry & Karaikal. **above normal(1.6°C to 3.0°C)** at few places over Bihar, Kerala & Mahe and Lakshadweep; at isolated places over Assam & Meghalaya. **near normal(-1.5°C to 1.5°C)** at many places over Jharkhand, East Uttar Pradesh, Punjab, Madhya Maharashtra, Marathwada, Telangana and South Interior Karnataka; at most places over Andaman & Nicobar Islands, Arunachal Pradesh, Nagaland, Manipur, Mizoram & Tripura, Sub Himalayan West Bengal & Sikkim and Konkan & Goa; at few places over Gangetic West Bengal, Uttarakhand, Haryana-Chandigarh-Delhi, Saurashtra & Kutch and North Interior Karnataka; at isolated places over East Madhya Pradesh. **The highest maximum temperature** of 43.1°C is reported at SRIGANGANAGAR (RAJASTHAN).

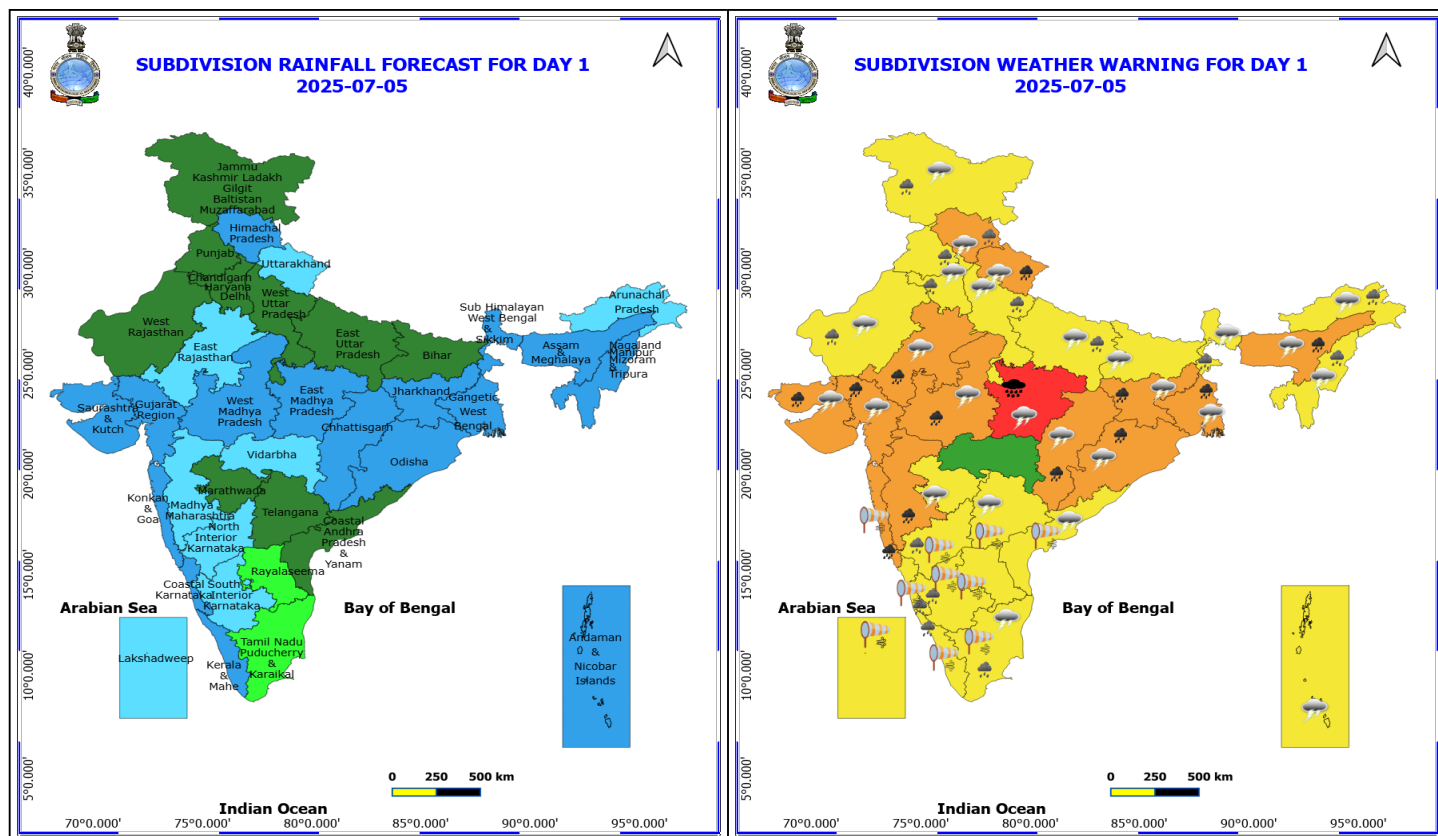


Meteorological Analysis (Based on 0830 hours IST)

- The **monsoon trough** at mean sea level now passes through Sri Ganganagar, Bhiwani, Agra, Banda, Dehri, Purulia, Kolkata and thence east southeastwards to northeast Bay of Bengal.
- The **cyclonic circulation** over Northeast Madhya Pradesh & neighbourhood extending upto 1.5 km above mean sea level persists.
- The **upper air cyclonic circulation** over northern parts of Gangetic West Bengal & neighborhood persists and now extends upto 7.6 km above mean sea level tilting southwest wards with height. Under its influence; a Low-Pressure area is likely to form over Gangetic West Bengal & neighbourhood during next 24 hours
- The **trough** now runs from northeast Arabian Sea to the above cyclonic circulation over northern parts of Gangetic West Bengal & neighborhood across north Gujarat, north Madhya Pradesh, southeast Uttar Pradesh, Jharkhand between 3.1 km & 5.8 km above mean sea level tilting southward with height.
- The upper air **cyclonic circulation** over central Assam now lies over northeast Assam and seen at 0.9 km above mean sea level.
- The **off-shore trough** now runs from south Gujarat to Karnataka coasts at mean sea level.

Weather Outlook for subsequent 3 days

- Fairly widespread to widespread rainfall very likely over Central India, along west Coast, Islands, East India & Northwest India.
- scattered rainfall very likely over rest parts of the country.



5 July (Day 1)

- ❖ **Heavy to Very Heavy Rainfall with isolated Extremely Heavy Rainfall** very likely at isolated places over East Madhya Pradesh.
- ❖ **Heavy to Very Heavy Rainfall** very likely at isolated places over Assam & Meghalaya, Chhattisgarh, East Rajasthan, Gangetic West Bengal, Gujarat State, Jharkhand, Konkan & Goa, Madhya Maharashtra, Odisha, Uttarakhand and West Madhya Pradesh.
- ❖ **Heavy Rainfall** very likely at isolated places over Arunachal Pradesh, Haryana, Chandigarh & Delhi, Himachal Pradesh, Jammu-Kashmir-Ladakh-Gilgit-Baltistan-Muzaffarabad, Karnataka, Kerala & Mahe, Nagaland, Manipur, Mizoram and Tripura, Punjab, Sub Himalayan West Bengal & Sikkim, Tamil Nadu Puducherry & Karaikal, Uttar Pradesh and West Rajasthan.
- ❖ **Thunderstorm accompanied with lightning & gusty winds(30-40kmph)** very likely at isolated places over Andaman & Nicobar Islands, Bihar, Gangetic West Bengal, Jammu-Kashmir-Ladakh-Gilgit-Baltistan-Muzaffarabad, Jharkhand, Odisha, West Madhya Pradesh and West Rajasthan.
- ❖ **Thunderstorm accompanied with Lightning** very likely at isolated places over Arunachal Pradesh, Assam & Meghalaya, Chhattisgarh, Coastal Andhra Pradesh, East Madhya Pradesh, East Rajasthan, Gujarat State, Haryana, Chandigarh & Delhi, Himachal Pradesh, Marathwada, Nagaland, Manipur, Mizoram and Tripura, Sub Himalayan West Bengal & Sikkim, Tamil Nadu Puducherry & Karaikal, Telangana, Uttar Pradesh and Uttarakhand.
- ❖ **Strong Surface Winds** very likely at isolated places over Andhra Pradesh, Karnataka, Kerala & Mahe, Konkan & Goa, Lakshadweep, Tamil Nadu Puducherry & Karaikal and Telangana.
- **Squally wind speed reaching 45 kmph to 55 kmph gusting to 65 kmph** is likely to prevail along and off Somalia, Oman & adjoining Yemen coasts, most parts of westcentral Arabian Sea & adjoining, many parts of

*Red color warning does not mean "Red Alert" Red color warning means "Take Action"

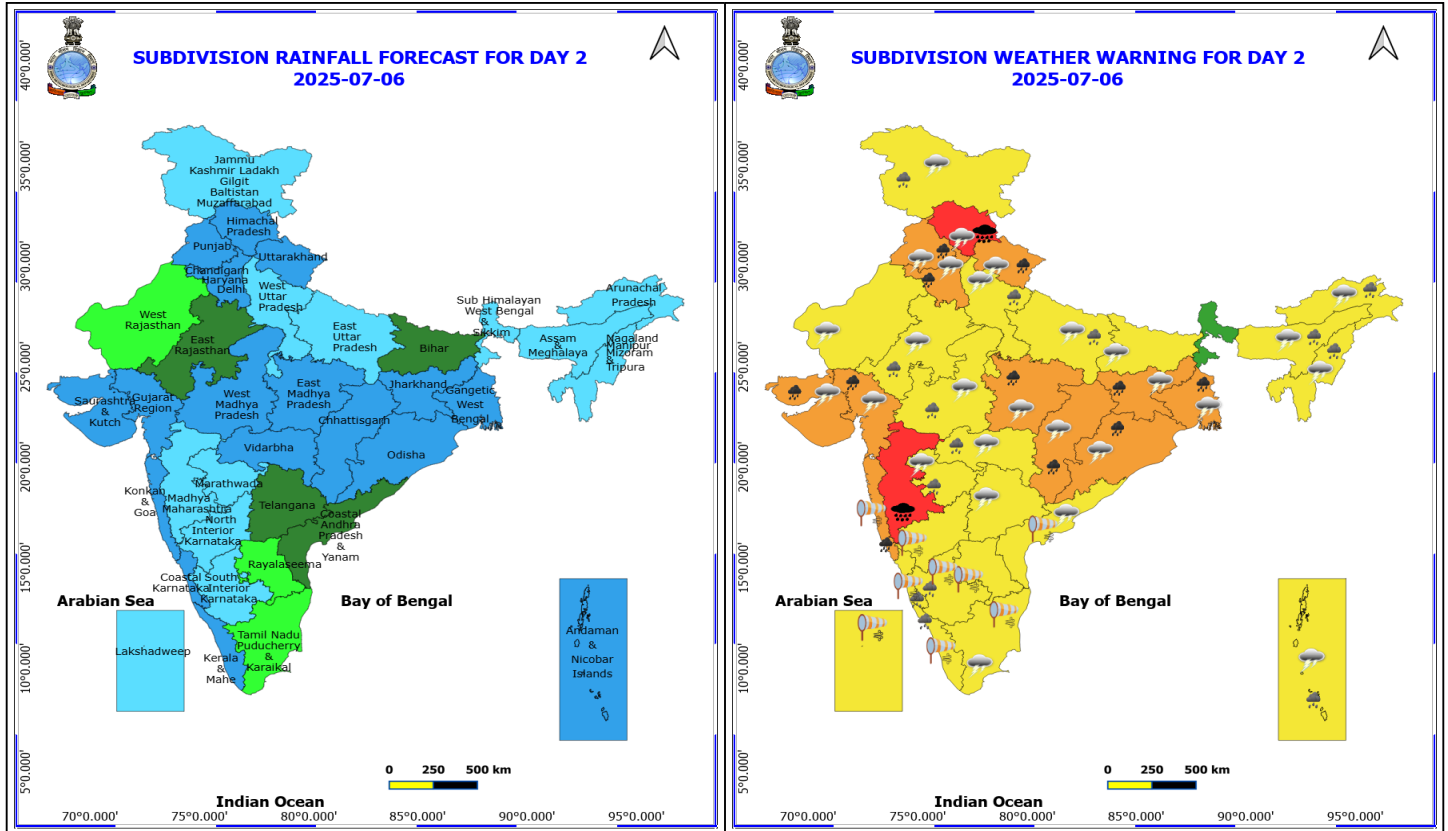
Forecast and warning for any day is valid from 0830 hours IST of day till 0830 hours IST of next day

For more details kindly visit <https://mausam.imd.gov.in> or contact 011-2434-4599

(Service to the nation since 1875)

eastcentral Arabian Sea, northern parts of southwest Arabian Sea.

- **Squally weather with wind speed 40 - 50 kmph gusting to 60 kmph** likely to prevail along and off Gujarat Konkan, Goa coasts, adjoining sea areas, over many parts of northeast Arabian Sea, some parts of eastcentral Arabian Sea, over some parts of southwest Bay of Bengal, many parts of westcentral Bay of Bengal, off Tamil Nadu, south Andhra Pradesh coasts, along and off north Andhra Pradesh, adjoining south Odisha coast.



6 July (Day 2)

- ❖ **Heavy to Very Heavy Rainfall with isolated Extremely Heavy Rainfall** very likely at isolated places over Himachal Pradesh and Madhya Maharashtra.
- ❖ **Heavy to Very Heavy Rainfall** very likely at isolated places over Chhattisgarh, East Madhya Pradesh, Gangetic West Bengal, Gujarat State, Haryana, Chandigarh & Delhi, Jharkhand, Konkan & Goa, Odisha, Punjab and Uttarakhand.
- ❖ **Heavy Rainfall** very likely at isolated places over Andaman & Nicobar Islands, Arunachal Pradesh, Assam & Meghalaya, Coastal Karnataka, East Rajasthan, Jammu-Kashmir-Ladakh-Gilgit-Baltistan-Muzaffarabad, Kerala & Mahe, Marathwada, Nagaland, Manipur, Mizoram and Tripura, South Interior Karnataka, Uttar Pradesh, Vidarbha and West Madhya Pradesh.
- ❖ **Thunderstorm accompanied with lightning & gusty winds(30-40kmph)** very likely at isolated places over Andaman & Nicobar Islands, Bihar, Gangetic West Bengal, Jammu-Kashmir-Ladakh-Gilgit-Baltistan-Muzaffarabad, Jharkhand, Odisha, West Madhya Pradesh and West Rajasthan.
- ❖ **Thunderstorm accompanied with Lightning** very likely at isolated places over Arunachal Pradesh, Assam & Meghalaya, Chhattisgarh, Coastal Andhra Pradesh, East Madhya Pradesh, East Rajasthan, Gujarat State, Haryana, Chandigarh & Delhi, Himachal Pradesh, Marathwada, Nagaland, Manipur, Mizoram and Tripura, Punjab, Tamil Nadu Puducherry & Karaikal, Telangana, Uttar Pradesh, Uttarakhand and Vidarbha.
- ❖ **Strong Surface Winds** very likely at isolated places over Andhra Pradesh, Karnataka, Kerala & Mahe, Konkan & Goa, Lakshadweep and Tamil Nadu Puducherry & Karaikal.
- **Squally wind speed reaching 45 kmph to 55 kmph gusting to 65 kmph** is likely to prevail along and off Somalia, Oman & adjoining Yemen coasts, most parts of westcentral Arabian Sea & adjoining, many parts of

***Red color warning does not mean "Red Alert" Red color warning means "Take Action"**

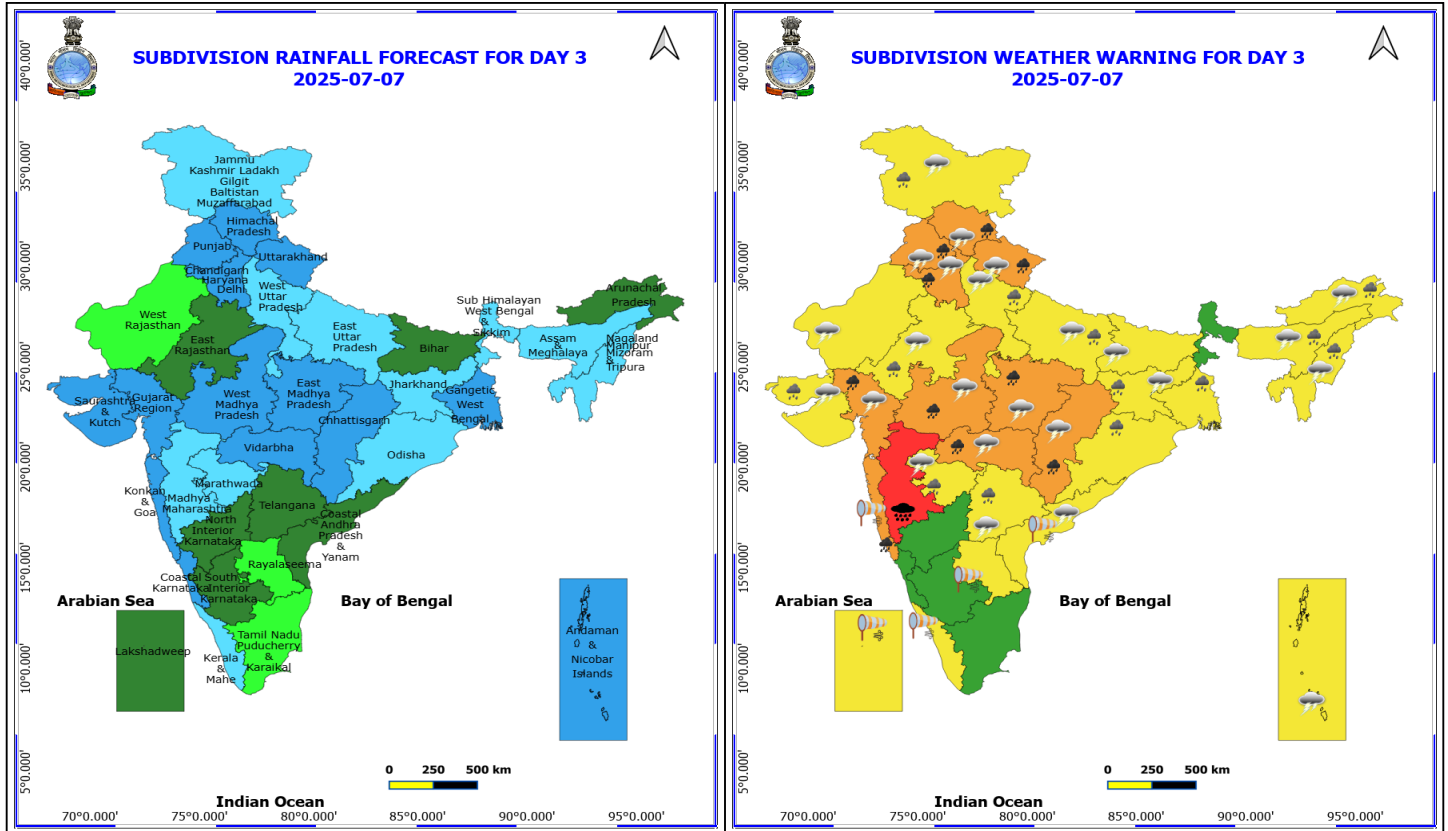
Forecast and warning for any day is valid from 0830 hours IST of day till 0830 hours IST of next day

For more details kindly visit <https://mausam.imd.gov.in> or contact 011-2434-4599

(Service to the nation since 1875)

eastcentral Arabian Sea, northern parts of southwest Arabian Sea, over Gulf of Mannar.

- **Squally weather with wind speed 40 - 50 kmph gusting to 60 kmph** likely to prevail along and off Gujarat, Konkan, Goa, Karnataka coasts, adjoining sea areas, over many parts of northeast Arabian Sea, over many parts of central Bay of Bengal & adjoining some parts of southwest and northwest Bay of Bengal, off Tamil Nadu & Andhra Pradesh, south Odisha coasts.



7 July (Day 3)

- ❖ **Heavy to Very Heavy Rainfall with isolated Extremely Heavy Rainfall** very likely at isolated places over Madhya Maharashtra.
- ❖ **Heavy to Very Heavy Rainfall** very likely at isolated places over Chhattisgarh, Gujarat Region, Haryana, Chandigarh & Delhi, Himachal Pradesh, Konkan & Goa, Madhya Pradesh, Punjab, Uttarakhand and Vidarbha.
- ❖ **Heavy Rainfall** very likely at isolated places over Arunachal Pradesh, Assam & Meghalaya, East Rajasthan, Gangetic West Bengal, Jammu-Kashmir-Ladakh-Gilgit-Baltistan-Muzaffarabad, Jharkhand, Marathwada, Nagaland, Manipur, Mizoram and Tripura, Odisha, Saurashtra & Kutch, Telangana and Uttar Pradesh.
- ❖ **Thunderstorm accompanied with lightning & gusty winds(30-40kmph)** very likely at isolated places over Andaman & Nicobar Islands, Bihar, Jammu-Kashmir-Ladakh-Gilgit-Baltistan-Muzaffarabad, Jharkhand and West Rajasthan.
- ❖ **Thunderstorm accompanied with Lightning** very likely at isolated places over Arunachal Pradesh, Assam & Meghalaya, Chhattisgarh, Coastal Andhra Pradesh, East Rajasthan, Gujarat State, Haryana, Chandigarh & Delhi, Himachal Pradesh, Madhya Pradesh, Marathwada, Nagaland, Manipur, Mizoram and Tripura, Punjab, Telangana, Uttar Pradesh, Uttarakhand and Vidarbha.
- ❖ **Strong Surface Winds** very likely at isolated places over Andhra Pradesh, Kerala & Mahe, Konkan & Goa and Lakshadweep.
- **Squally wind speed reaching 45 kmph to 55 kmph gusting to 65 kmph** is likely to prevail along and off Somalia, Oman & adjoining Yemen coasts, most parts of westcentral Arabian Sea & adjoining, many parts of eastcentral Arabian Sea, northern parts of southwest Arabian Sea.
- **Squally weather with wind speed 40 - 50 kmph gusting to 60 kmph** likely to prevail along and off Gujarat,

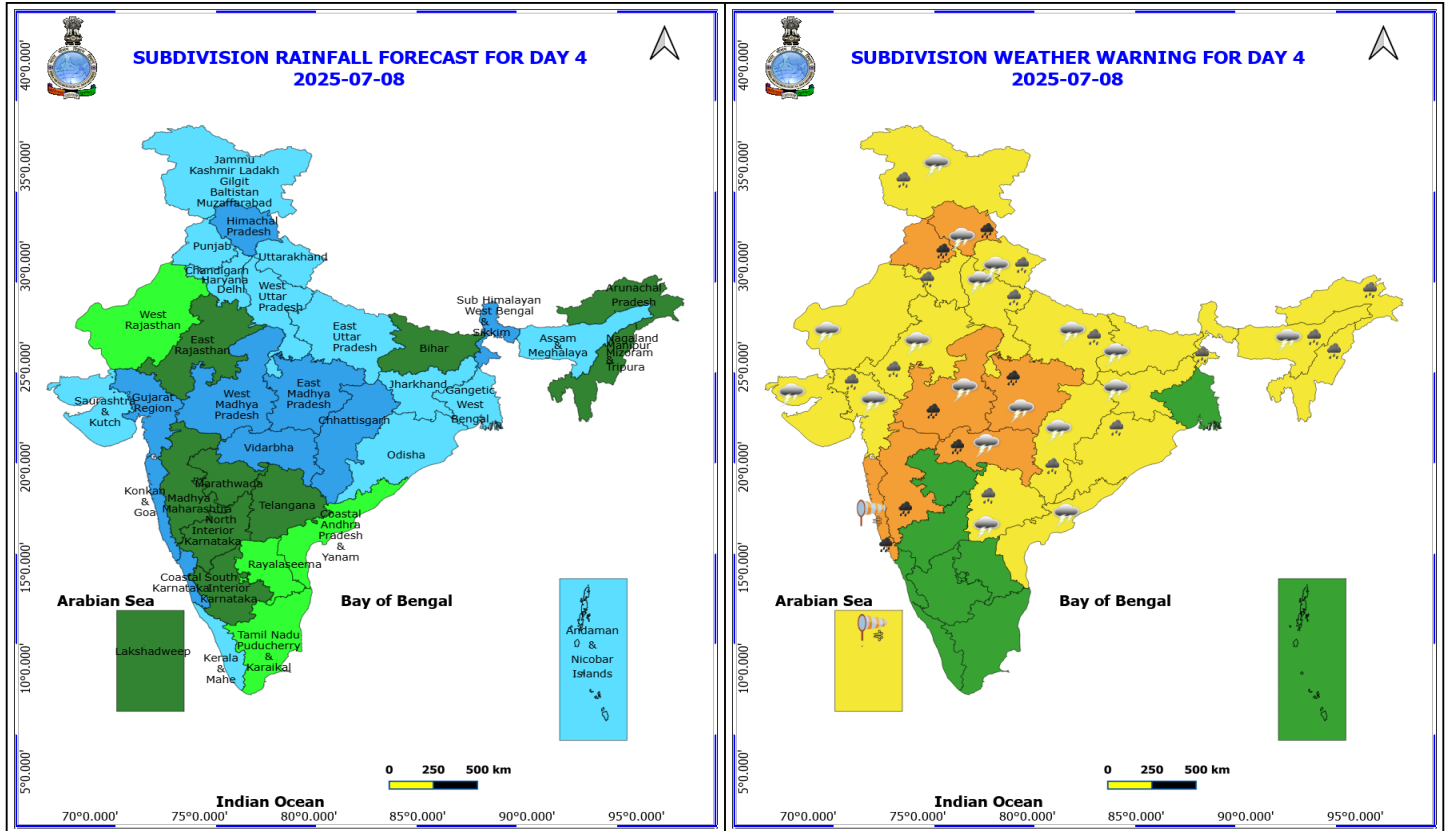
***Red color warning does not mean "Red Alert" Red color warning means "Take Action"**

Forecast and warning for any day is valid from 0830 hours IST of day till 0830 hours IST of next day

For more details kindly visit <https://mausam.imd.gov.in> or contact 011-2434-4599

(Service to the nation since 1875)

Konkan, Goa, north Karnataka coasts, adjoining sea areas, over, many parts of northeast Arabian Sea, over many parts of westcentral Bay of Bengal, off north Andhra Pradesh coasts.



8 July (Day 4)

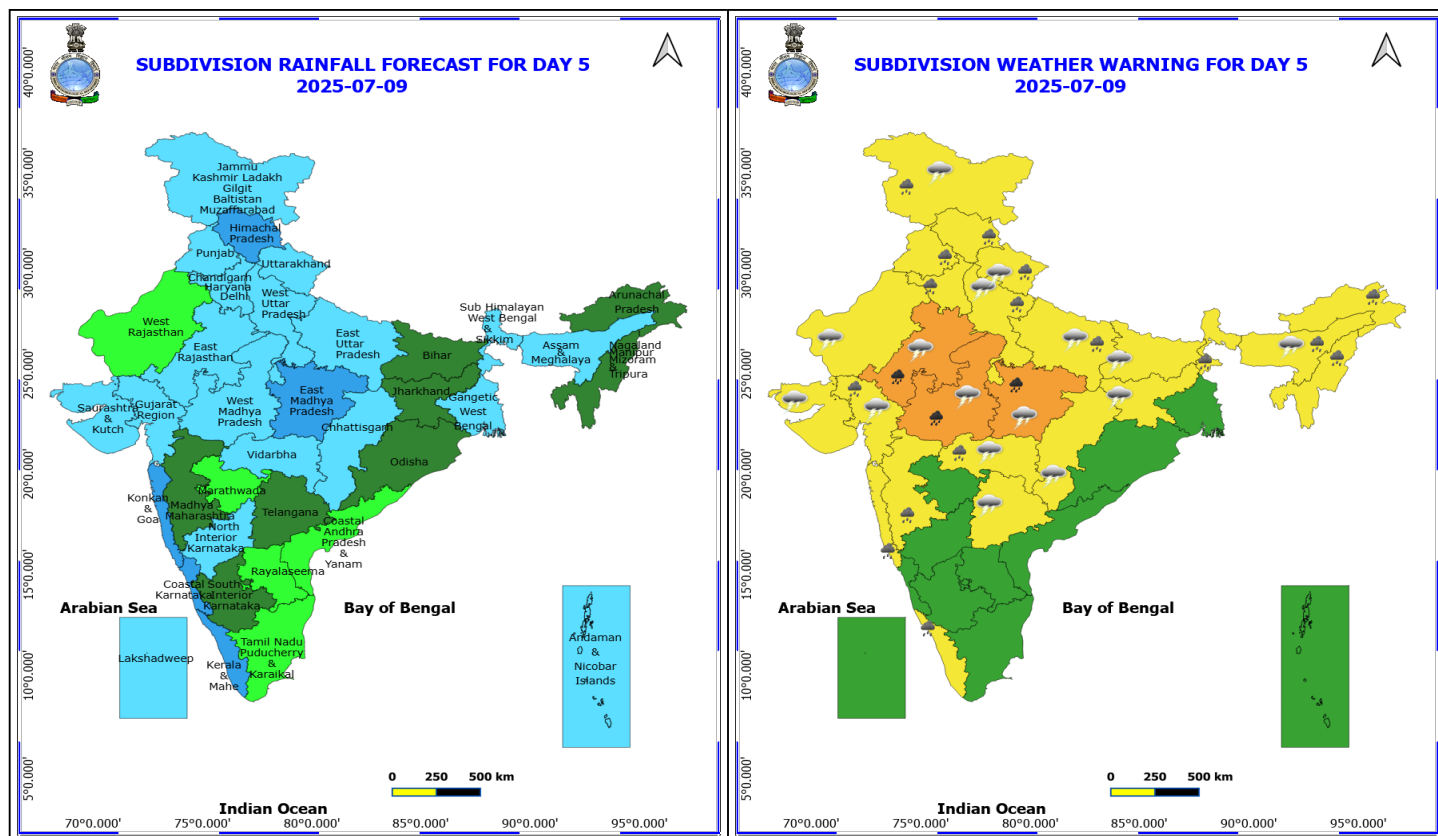
- ❖ **Heavy to Very Heavy Rainfall** likely at isolated places over Himachal Pradesh, Konkan & Goa, Madhya Maharashtra, Madhya Pradesh, Punjab and Vidarbha.
- ❖ **Heavy Rainfall** likely at isolated places over Arunachal Pradesh, Assam & Meghalaya, Chhattisgarh, East Rajasthan, Gujarat Region, Haryana, Chandigarh & Delhi, Jammu-Kashmir-Ladakh-Gilgit-Baltistan-Muzaffarabad, Nagaland, Manipur, Mizoram and Tripura, Odisha, Sub Himalayan West Bengal & Sikkim, Telangana, Uttar Pradesh and Uttarakhand.
- ❖ **Thunderstorm accompanied with lightning & gusty winds(30-40kmph)** likely at isolated places over Bihar, Jammu-Kashmir-Ladakh-Gilgit-Baltistan-Muzaffarabad and West Rajasthan.
- ❖ **Thunderstorm accompanied with Lightning** likely at isolated places over Assam & Meghalaya, Chhattisgarh, Coastal Andhra Pradesh, East Rajasthan, Gujarat State, Himachal Pradesh, Jharkhand, Madhya Pradesh, Telangana, Uttar Pradesh, Uttarakhand and Vidarbha.
- ❖ **Strong Surface Winds** likely at isolated places over Konkan & Goa and Lakshadweep.
 - **Squally wind speed reaching 45 kmph to 55 kmph gusting to 65 kmph** is likely to prevail along and off Somalia, Oman & adjoining Yemen coasts, most parts of westcentral Arabian Sea & adjoining, many parts of eastcentral Arabian Sea, northern parts of southwest Arabian Sea.
 - **Squally weather with wind speed 40 - 50 kmph gusting to 60 kmph** likely to prevail along and off Gujarat, Konkan, Goa, north Karnataka coasts, adjoining sea areas, over some southern parts of northeast Arabian Sea, over some parts of westcentral Bay of Bengal.

***Red color warning does not mean "Red Alert" Red color warning means "Take Action"**

Forecast and warning for any day is valid from 0830 hours IST of day till 0830 hours IST of next day

For more details kindly visit <https://mausam.imd.gov.in> or contact 011-2434-4599

(Service to the nation since 1875)



9 July (Day 5)

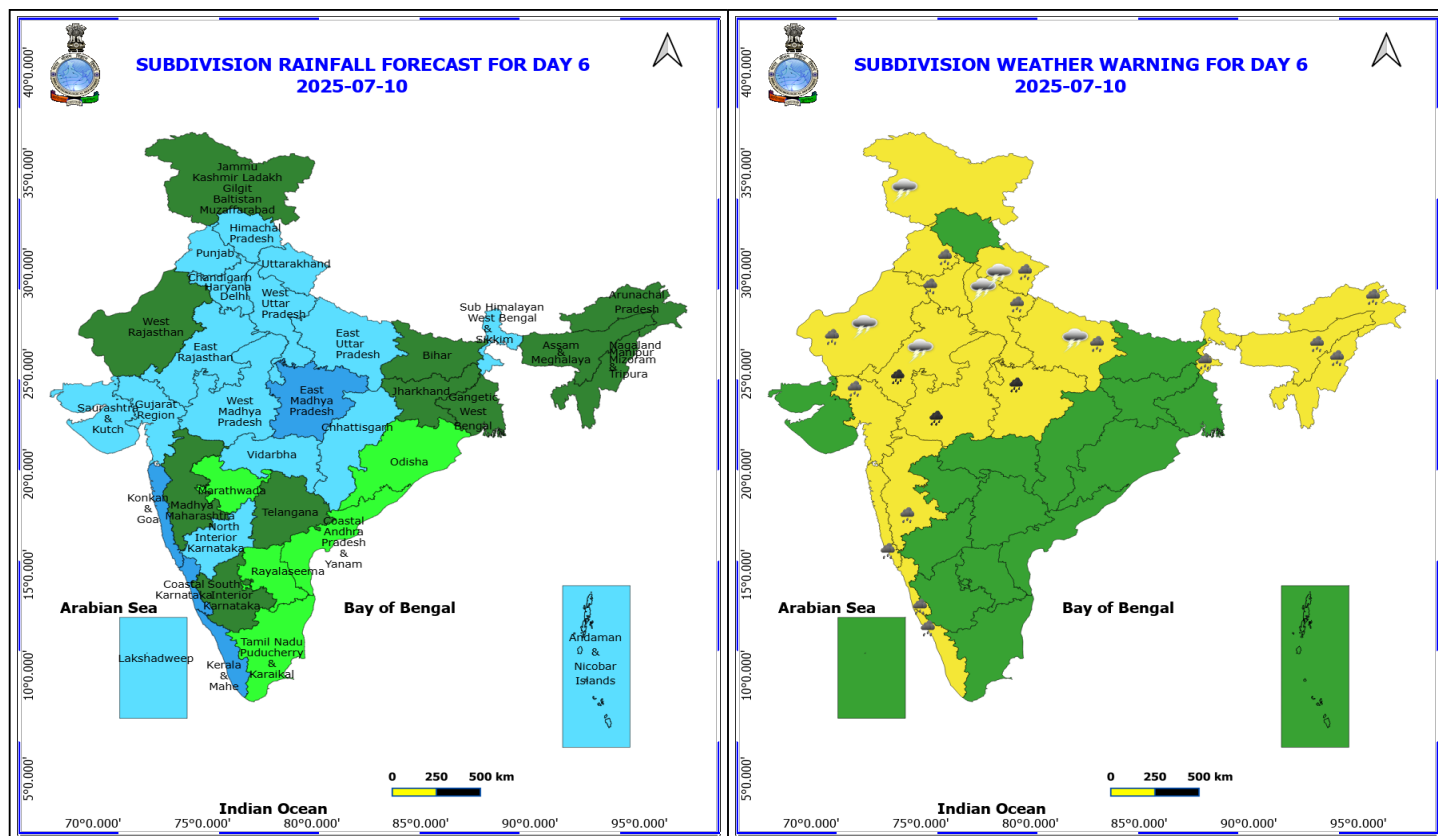
- ❖ **Heavy to Very Heavy Rainfall** likely at isolated places over East Rajasthan and Madhya Pradesh.
- ❖ **Heavy Rainfall** likely at isolated places over Arunachal Pradesh, Assam & Meghalaya, Gujarat Region, Haryana, Chandigarh & Delhi, Himachal Pradesh, Jammu-Kashmir-Ladakh-Gilgit-Baltistan-Muzaffarabad, Kerala & Mahe, Konkan & Goa, Madhya Maharashtra, Nagaland, Manipur, Mizoram and Tripura, Punjab, Sub Himalayan West Bengal & Sikkim, Uttar Pradesh, Uttarakhand and Vidarbha.
- ❖ **Thunderstorm accompanied with lightning & gusty winds(30-40kmph)** likely at isolated places over Bihar, Jammu-Kashmir-Ladakh-Gilgit-Baltistan-Muzaffarabad and West Rajasthan.
- ❖ **Thunderstorm accompanied with Lightning** likely at isolated places over Assam & Meghalaya, Chhattisgarh, East Rajasthan, Gujarat State, Jharkhand, Madhya Pradesh, Telangana, Uttar Pradesh, Uttarakhand and Vidarbha.
- **Squally wind speed reaching 45 kmph to 55 kmph gusting to 65 kmph** is likely to prevail along and off Somalia, Oman & adjoining Yemen coasts, most parts of westcentral Arabian Sea & adjoining, many parts of eastcentral Arabian Sea, northern parts of southwest Arabian Sea.
- **Squally weather with wind speed 40 - 50 kmph gusting to 60 kmph** likely to prevail along and off Gujarat, Konkan, Goa, north Karnataka coasts, adjoining sea areas, over some southern parts of northeast Arabian Sea, over some parts of westcentral Bay of Bengal, along and off north Andhra Pradesh coast.

***Red color warning does not mean "Red Alert" Red color warning means "Take Action"**

Forecast and warning for any day is valid from 0830 hours IST of day till 0830 hours IST of next day

For more details kindly visit <https://mausam.imd.gov.in> or contact 011-2434-4599

(Service to the nation since 1875)



10 July (Day 6)

- ❖ **Heavy to Very Heavy Rainfall** likely at isolated places over East Rajasthan and Madhya Pradesh.
- ❖ **Heavy Rainfall** likely at isolated places over Arunachal Pradesh, Assam & Meghalaya, Coastal Karnataka, Gujarat Region, Haryana, Chandigarh & Delhi, Kerala & Mahe, Konkan & Goa, Madhya Maharashtra, Nagaland, Manipur, Mizoram and Tripura, Punjab, Sub Himalayan West Bengal & Sikkim, Uttar Pradesh, Uttarakhand and West Rajasthan.
- ❖ **Thunderstorm accompanied with lightning & gusty winds(30-40kmph)** likely at isolated places over Jammu-Kashmir-Ladakh-Gilgit-Baltistan-Muzaffarabad and West Rajasthan.
- ❖ **Thunderstorm accompanied with Lightning** likely at isolated places over East Rajasthan, Uttar Pradesh and Uttarakhand.

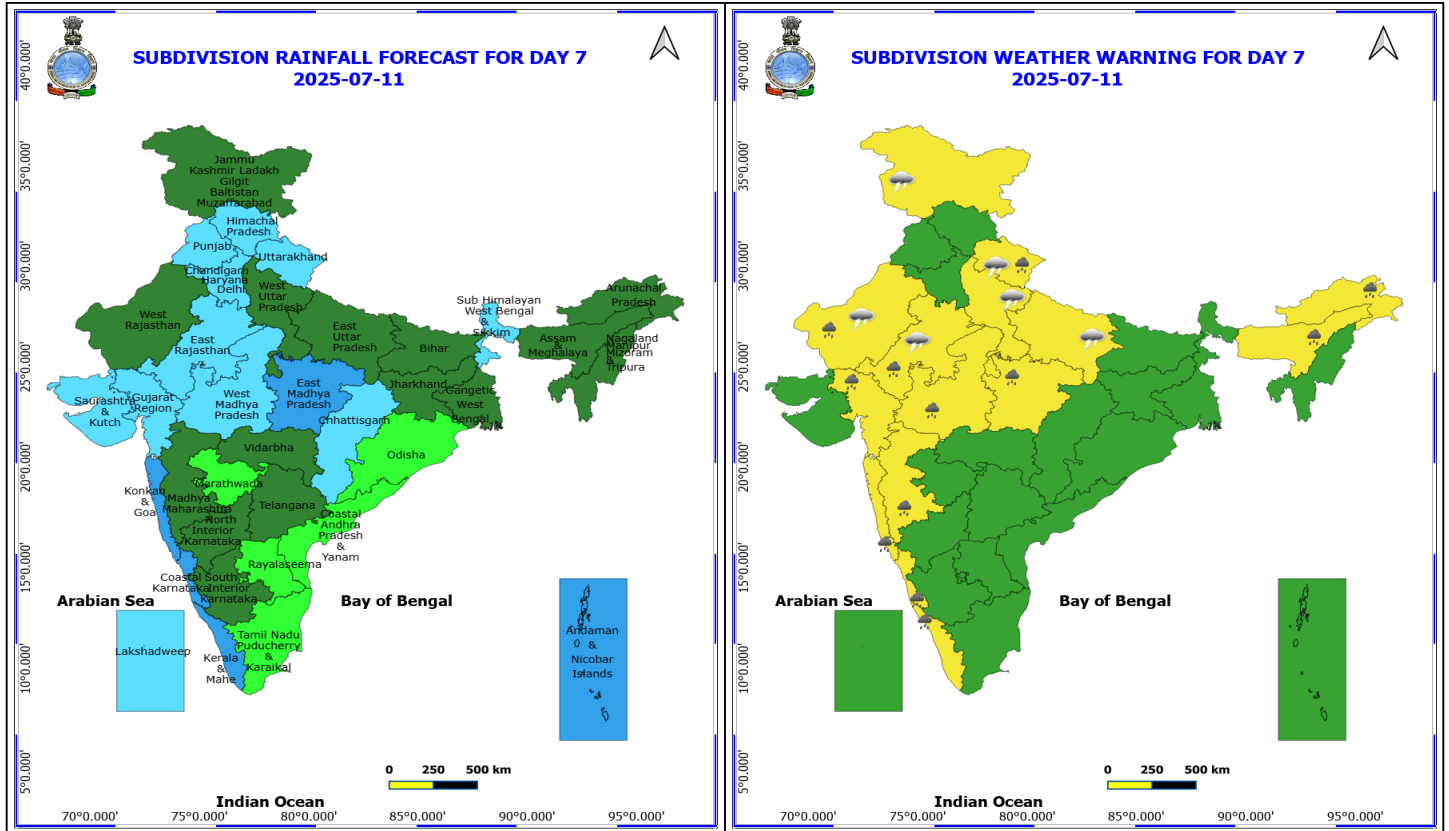
No Fishermen Warning

***Red color warning does not mean "Red Alert" Red color warning means "Take Action"**

Forecast and warning for any day is valid from 0830 hours IST of day till 0830 hours IST of next day

For more details kindly visit <https://mausam.imd.gov.in> or contact 011-2434-4599

(Service to the nation since 1875)



11 July (Day 7)

- ❖ **Heavy Rainfall** likely at isolated places over Arunachal Pradesh, Assam & Meghalaya, Coastal Karnataka, Gujarat Region, Kerala & Mahe, Konkan & Goa, Madhya Maharashtra, Madhya Pradesh, Rajasthan and Uttarakhand.
- ❖ **Thunderstorm accompanied with lightning & gusty winds(30-40kmph)** likely at isolated places over Jammu-Kashmir-Ladakh-Gilgit-Baltistan-Muzaffarabad and West Rajasthan.
- ❖ **Thunderstorm accompanied with Lightning** likely at isolated places over East Rajasthan, Uttar Pradesh and Uttarakhand.

No Fishermen Warning

*Red color warning does not mean "Red Alert" Red color warning means "Take Action"

Forecast and warning for any day is valid from 0830 hours IST of day till 0830 hours IST of next day

For more details kindly visit <https://mausam.imd.gov.in> or contact 011-2434-4599

(Service to the nation since 1875)

Flash Flood Warnings

24 hours Outlook for the Flash Flood Risk (FFR) till 1130 IST of 06-07-2025 :

Low to Moderate flash flood risk likely over few watersheds & neighbourhoods of following Met Sub-divisions during next 24 hours.

Assam & Meghalaya - Cachar, Karbi Analog, N.C Hills, Karimganj, East Khasi Hills, West Khasi Hills and Jaintia Hills districts.

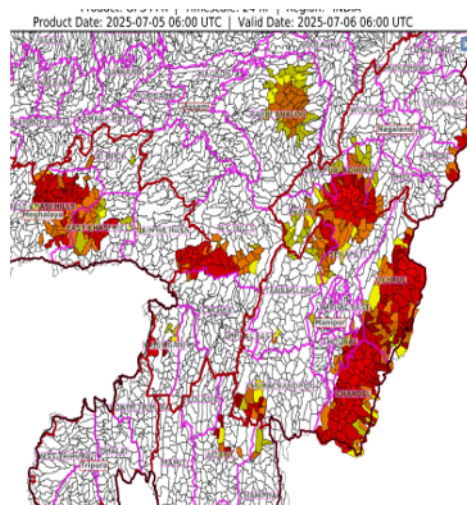
Nagaland Mizoram Manipur Tripura (NMMT)

Nagaland – Dimapur, Kiphire, Kohima, Peren, Phek, Tuensang.

Mizoram—Aizawl

Manipur – Chandel, Churachandpur, Imphal East, Senapati, Tamenglong, Thoubal, Ukhrul district

Surface runoff/ Inundation may occur at some fully saturated soils & low-lying areas over Area of Concern (AoC) as shown in map due to expected rainfall occurrence in next 24 hours.



24 hours Outlook for the Flash Flood Risk (FFR) till 1130 IST of 06-07-2025 :

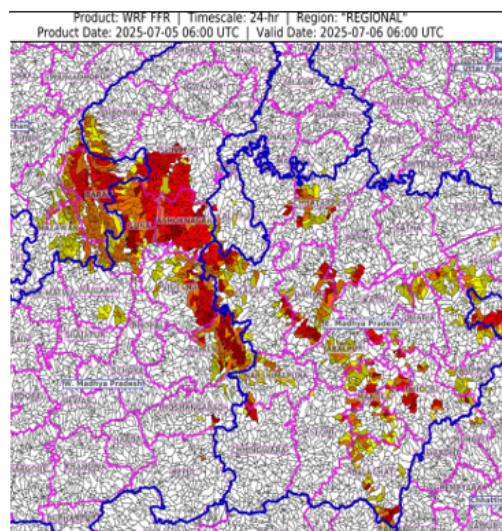
Moderate flash flood risk likely over few watersheds & neighbourhoods of following Met Sub-divisions during next 24 hours.

East Rajasthan - Baran, Jhalawar and Kota districts.

East Madhya Pradesh - Anuppur, Balaghat, Chhatarpur, Chhindwara, Damoh, Dindori, Jabalpur, Katni, Mandla, Narshimpura, Panna, Rewa, Sagar, Seoni, Shahdol, Sidhi, Singrauli, Tikamgarh and Umaria districts.

West Madhya Pradesh - Ashoknagar, Guna, Raisen, Rajgarh, Sheopur, Shivpuri and Videsha districts.

Surface runoff/ Inundation may occur at some fully saturated soils & low-lying areas over Area of Concern (AoC) as shown in map due to expected rainfall occurrence in next 24 hours.



24 hours Outlook for the Flash Flood Risk (FFR) till 1130 IST of 06-07-2025 :

Low to Moderate flash flood risk likely over few

*Red color warning does not mean "Red Alert" Red color warning means "Take Action"

Forecast and warning for any day is valid from 0830 hours IST of day till 0830 hours IST of next day

For more details kindly visit <https://mausam.imd.gov.in> or contact 011-2434-4599

(Service to the nation since 1875)

watersheds & neighbourhoods of following Met Sub-divisions during next 24 hours.

Himachal Pradesh - Chamba, Kangra, Mandi, Shimla and Sirmaur districts.

Jammu & Kashmir & Ladakh - Doda, Kathua and Udhampur districts.

Uttarakhand - Champawat, Dehradun, Nanital, Pauri Garhwal, Pithoragarh and Tehri Garwal districts.

Surface runoff/ Inundation may occur at some fully saturated soils & low-lying areas over Area of Concern (AoC) as shown in map due to expected rainfall occurrence in next 24 hours.

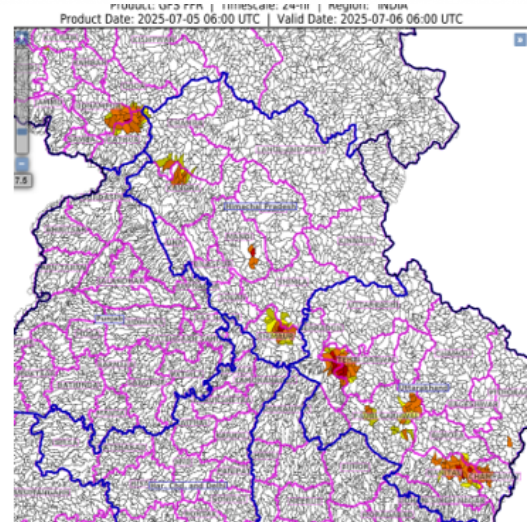




Table-1

7 Days Rainfall Forecast

S.No.	Subdivision	5- Jul	6- Jul	7- Jul	8- Jul	9- Jul	10- Jul	11- Jul
		Day 1	Day 2	Day 3	Day 4	Day 5	Day 6	Day 7
1	ANDAMAN & NICOBAR ISLANDS	WS	WS	WS	FWS	FWS	FWS	WS
2	ARUNACHAL PRADESH	FWS	FWS	SCT	SCT	SCT	SCT	SCT
3	ASSAM & MEHGHALAYA	WS	FWS	FWS	FWS	FWS	SCT	SCT
4	N. M. M. & T.	WS	FWS	FWS	SCT	SCT	SCT	SCT
5	S.H. WEST BENGAL & SIKKIM	WS	FWS	FWS	WS	FWS	FWS	FWS
6	GANGETIC WEST BENGAL	WS	WS	WS	FWS	FWS	SCT	SCT
7	ODISHA	WS	WS	FWS	FWS	SCT	ISOL	ISOL
8	JHARKHAND	WS	WS	FWS	FWS	SCT	SCT	SCT
9	BIHAR	SCT	SCT	SCT	SCT	SCT	SCT	SCT
10	EAST UTTAR PRADESH	SCT	FWS	FWS	FWS	FWS	FWS	SCT
11	WEST UTTAR PRADESH	SCT	FWS	FWS	FWS	FWS	FWS	SCT
12	UTTARAKHAND	FWS	WS	WS	FWS	FWS	FWS	FWS
13	HARYANA, CHD & DELHI	SCT	WS	WS	FWS	FWS	FWS	FWS
14	PUNJAB	SCT	WS	WS	FWS	FWS	FWS	FWS
15	HIMACHAL PRADESH	WS	WS	WS	WS	WS	FWS	FWS
16	JAMMU AND KASHMIR AND LADAKH	SCT	FWS	FWS	FWS	FWS	SCT	SCT
17	WEST RAJASTHAN	SCT	ISOL	ISOL	ISOL	ISOL	SCT	SCT
18	EAST RAJASTHAN	FWS	SCT	SCT	SCT	FWS	FWS	FWS
19	WEST MADHYA PRADESH	WS	WS	WS	WS	FWS	FWS	FWS
20	EAST MADHYA PRADESH	WS	WS	WS	WS	WS	WS	WS
21	GUJRAT REGION	WS	WS	WS	WS	FWS	FWS	FWS
22	SAURASHTRA & KUTCH	WS	WS	WS	FWS	FWS	FWS	FWS
23	KONKAN & GOA	WS	WS	WS	WS	WS	WS	WS
24	MADHYA MAHARASHTRA	FWS	FWS	FWS	SCT	SCT	SCT	SCT
25	MARATHWADA	SCT	FWS	FWS	SCT	ISOL	ISOL	ISOL
26	VIDARBHA	FWS	WS	WS	WS	FWS	FWS	SCT
27	CHATTISGARH	WS	WS	WS	WS	FWS	FWS	FWS
28	COASTAL ANDHRA PRADESH	SCT	SCT	SCT	ISOL	ISOL	ISOL	ISOL
29	TELANGANA	SCT	SCT	SCT	SCT	SCT	SCT	SCT
30	RAYALASEEMA	ISOL	ISOL	ISOL	ISOL	ISOL	ISOL	ISOL
31	TAMILNADU & PUDUCHERRY	ISOL	ISOL	ISOL	ISOL	ISOL	ISOL	ISOL
32	COSTAL KARNATAKA	WS	WS	WS	WS	WS	WS	WS
33	NORTH INTERIOR KARNATAKA	FWS	FWS	SCT	SCT	FWS	FWS	SCT
34	SOUTH INTERIOR KARNATAKA	FWS	FWS	SCT	SCT	SCT	SCT	SCT
35	KERALA	WS	WS	FWS	FWS	WS	WS	WS
36	LAKSHDWEEP	FWS	FWS	SCT	SCT	FWS	FWS	FWS

Legend	Category	%Stations
WS	Widespread/Most Places	76-100
FWS	Fairly Widespread/Many Places	51-75
SCT	Scattered/ A Few Places	26-50
ISOL	Isolated Places	1-25
DRY	No Rain	0

*Red color warning does not mean "Red Alert" Red color warning means "Take Action"

Forecast and warning for any day is valid from 0830 hours IST of day till 0830 hours IST of next day

For more details kindly visit <https://mausam.imd.gov.in> or contact 011-2434-4599

(Service to the nation since 1875)

Fig. 1: Maximum Temperatures Dated 2025-07-05

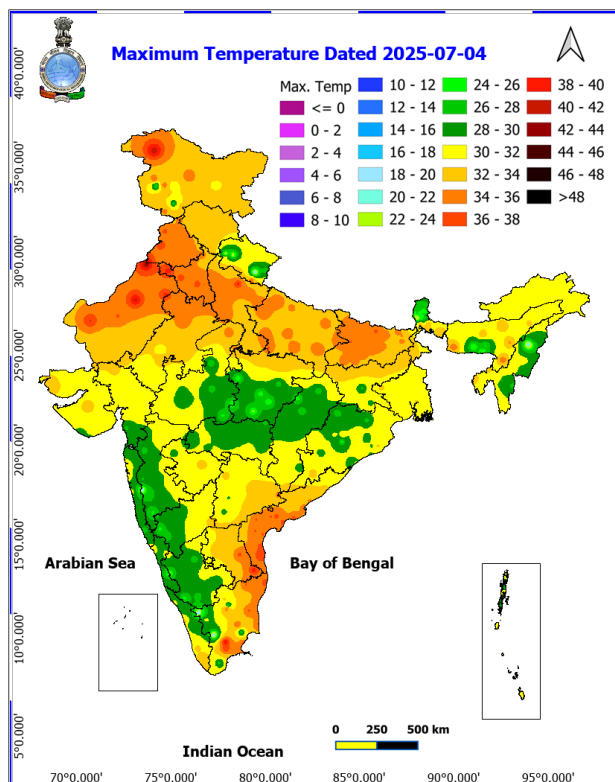


Fig. 2: Departure of Maximum Temp. Dated 2025-07-05

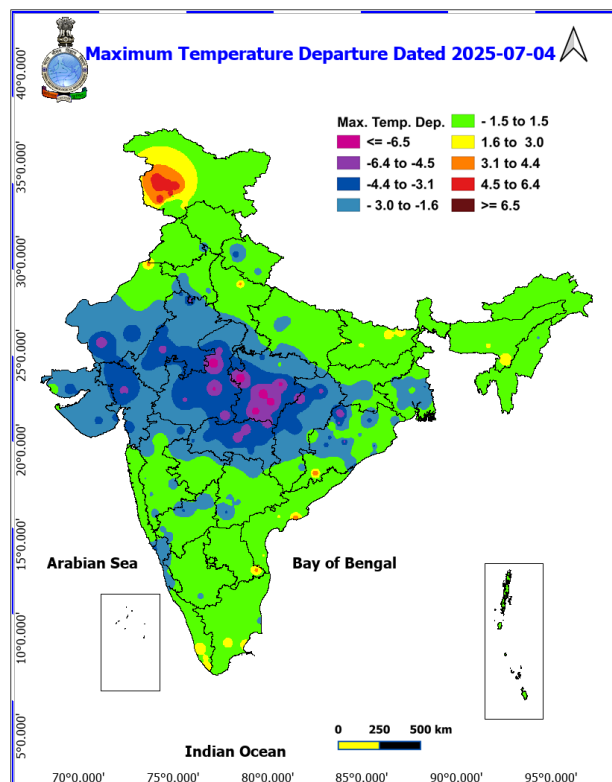


Fig. 3: Minimum Temperatures Dated 2025-07-05

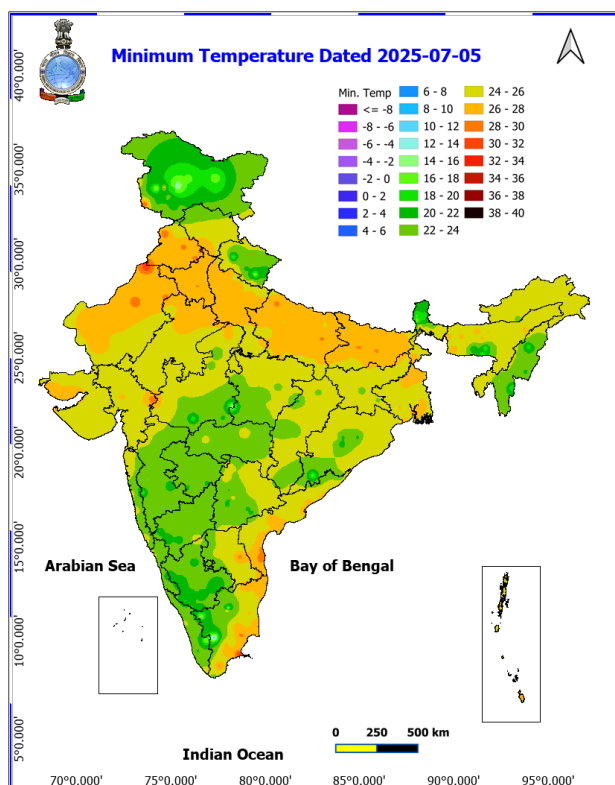
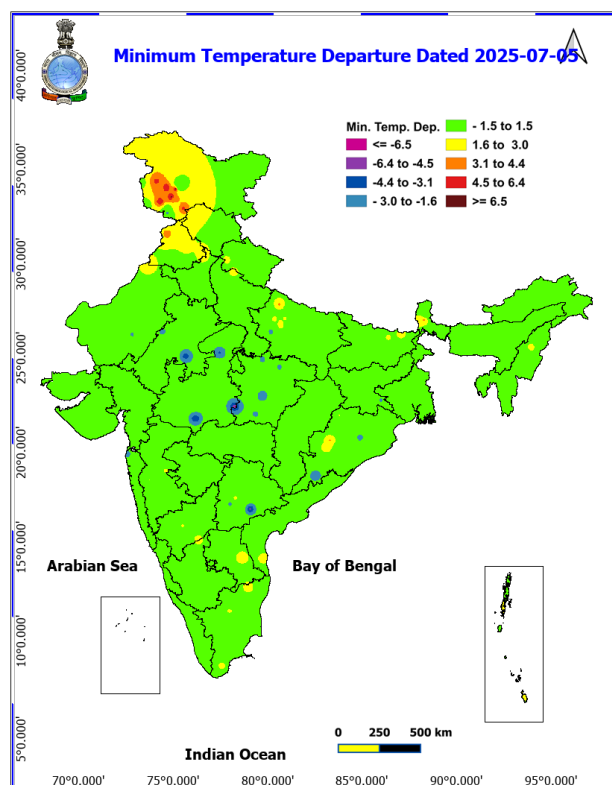
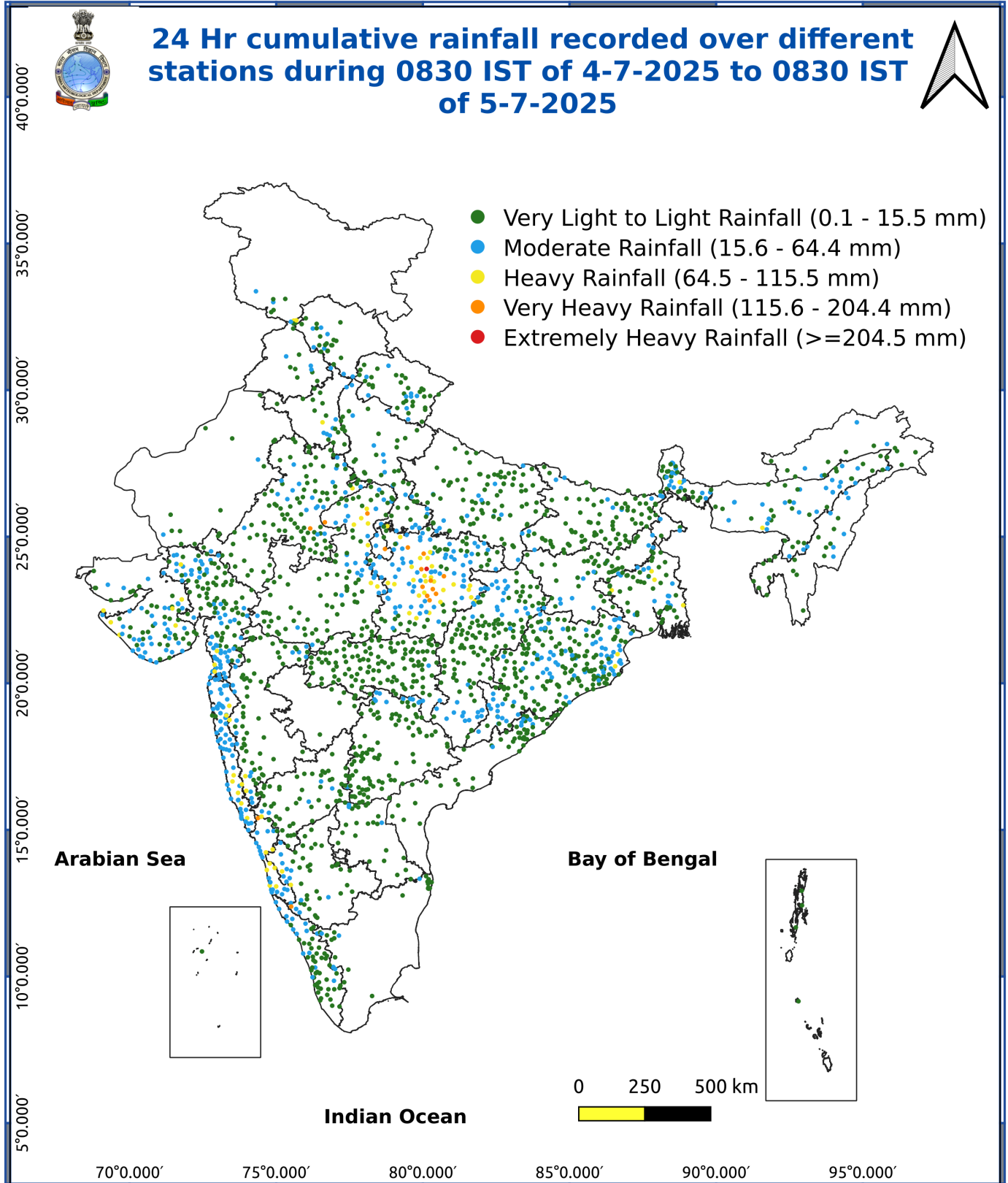


Fig. 4: Departure of Minimum Temp. Dated 2025-07-05





*Red color warning does not mean "Red Alert" Red color warning means "Take Action"

Forecast and warning for any day is valid from 0830 hours IST of day till 0830 hours IST of next day

For more details kindly visit <https://mausam.imd.gov.in> or contact 011-2434-4599

(Service to the nation since 1875)

- **Extremely heavy rainfall (≥ 21 cm)** very likely at isolated places over East Madhya Pradesh on 04th; Ghat areas of Madhya Maharashtra on 06th & 07th and Himachal Pradesh on 06th July.
- **Heavy to very heavy rainfall over Jammu, Jharkhand, West Uttar Pradesh on 06th; Himachal Pradesh, Uttarakhand during 05th-08th; Punjab, Haryana on 06th & 07th; East Rajasthan during 04th-06th and 09th & 10th; Madhya Pradesh during 04th, 05th and during 08th-10th; Chhattisgarh, Konkan & Goa, Madhya Maharashtra, Gujarat Region during 04th-08th; Vidarbha during 06th-08th; Gangetic West Bengal on 05th & 06th; Coastal Karnataka during 04th-06th; South Interior Karnataka, Saurashtra & Kutch, Arunachal Pradesh on 04th and Meghalaya on 04th & 06th July.**

Impact Expected

- Localized Flooding of roads, water logging in low lying areas and closure of underpasses mainly in urban areas of the above region.
- Occasional reduction in visibility due to heavy rainfall.
- Disruption of traffic in major cities due to water logging in roads leading to increased travel time.
- Minor damage to kutcha roads.
- Possibilities of damage to vulnerable structure.
- Localized Landslides/Mudslides/landslips/mudslips/landsinks/mudsinks.
- Damage to horticulture and standing crops in some areas due to inundation.
- It may lead to riverine flooding in some river catchments (for riverine flooding please visit Web page of CWC)

Action Suggested

- Check for traffic congestion on your route before leaving for your destination.
- Follow any traffic advisories that are issued in this regard.
- Avoid going to areas that face the water logging problems often.
- Avoid staying in vulnerable structure.

Agromet advisories for various parts of the country

Agromet advisories for likely impact of Heavy / Heavy to Very Heavy / Extremely Heavy Rainfall

- In **West Madhya Pradesh**, postpone the sowing of soybean and wait until the cessation of rainfall before resowing soybean and pearl millet that have been damaged due to rainfall in the Grid Zone. In **East Madhya Pradesh**, postpone sowing of maize, soybean and transplanting of rice. Drain out excess water from already sown maize, soybean, rice nurseries and transplanted rice.
- In **Chhattisgarh**, ensure proper drainage in rice nurseries, fields of maize, minor millets and vegetables.
- In **Konkan**, make arrangement to drain out excess water from rice and finger millet nurseries, groundnut, vegetables and orchards. In **ghat areas of Madhya Maharashtra** make arrangement to drain out excess water from rice and finger millet nurseries.
- In **Coastal Karnataka**, ensure proper drainage in already sown rice nurseries and remove excess rainwater to prevent water stagnation. Provide drainage to remove the excess water from the maize fields, arecanut, coconut and banana. Provide staking to avoid lodging of Banana plant. In **South Interior Karnataka**, make arrangements to drain out excess water in vegetables to avoid waterlogging.
- In **Himachal Pradesh** - make proper drainage channels in the fields of vegetables and maize. In **High Hills Sub Temperate Wet Zone**, postpone sowing of kidney beans. Provide proper drainage in finger millets, maize, kidney beans, vegetables and fruit orchards. Harvest the mature fruits and vegetables and store them in safer places.
- In **Uttarakhand**, ensure proper drainage facilities in soybean, maize, barnyard millet, finger millet, pigeon pea, kidney beans, vegetables and orchards. Harvest matured vegetables and fruits and store in safe place.
- In **East Rajasthan**, harvest the matured vegetables such as okra and cucurbits and store them in safe places. Make arrangements for draining out excess water from the fields of groundnut and green gram.
- In **Gujarat**, make necessary arrangements to drain out excess water in rice nurseries, sugarcane fields, banana and mango plantations to prevent waterlogging. Provide support to sugarcane with strong bamboo or

*Red color warning does not mean "Red Alert" Red color warning means "Take Action"

Forecast and warning for any day is valid from 0830 hours IST of day till 0830 hours IST of next day

For more details kindly visit <https://mausam.imd.gov.in> or contact 011-2434-4599

(Service to the nation since 1875)



tie the leaves together to prevent lodging. Postpone transplanting of rice seedlings in *South Gujarat Heavy Rainfall Zone*.

- In **Saurashtra & Kutch**, drain out excess rain water from groundnut, soybean, cotton, vegetable nurseries/fields and horticultural plantations. Undertake propping in sugarcane with strong bamboo or tie the leaves together in a clump to protect against wind and heavy rain.
- In **Odisha**, ensure proper drainage from already sown rice nurseries, fields of maize and vegetables to prevent waterlogging. Harvest matured vegetables and fruits and keep in safer places.
- In **Jharkhand**, make necessary arrangements to drain out excess water from already sown maize fields, rice and vegetable nurseries. Cover the vegetable nurseries with polythene sheets.
- In **Gangetic West Bengal**, ensure proper drainage from rice, jute and vegetable field. Harvest matured sesame and groundnut crop immediately and keep in safer places in *New Alluvial Zone*.
- In **Arunachal Pradesh**, harvest matured soybean and vegetables during clear weather and shift the harvested produce to safer places. Postpone fresh transplantation of rice in lowland areas. Ensure proper drainage in rice, soybean, vegetable fields and orchards.
- In **Meghalaya** - Avoid nursery sowing/transplanting of rice during heavy rainfall. Maintain proper drainage around nursery bed. Avoid water stagnation near cucurbits (pumpkin/bottle gourd/ ash gourd/squash/cucumber/bitter melon) plant bases to prevent collar rot and other root diseases

Agromet advisories for likely impact of Thunderstorm / Gusty Winds / Squally Winds

(Based on the IBF and advisories issued by different AMFUs)

Provide mechanical support to horticultural crops and staking or support to vegetables and young fruit plants / fruit-bearing plants to avoid lodging due to strong winds.

LEGENDS

- 1 अंडमान और निकोबार द्वीप समुह
- 2 अरुणाचल प्रदेश
- 3 असम और मेघालय
- 4 नागालैंड मनीपुर मीजोरम और त्रिपुरा
- 5 उप हिमालय पश्चिम बंगाल एवं सिक्किम
- 6 पश्चिम बंगाल
- 7 ओडिशा
- 8 झारखंड
- 9 बिहार
- 10 पूर्वी उत्तर प्रदेश
- 11 पश्चिम उत्तर प्रदेश
- 12 उत्तराखंड
- 13 हरियाणा चंडीगढ़ एवं दिल्ली
- 14 पंजाब
- 15 हिमाचल प्रदेश
- 16 जम्मू एवं कश्मीर एवं लद्दाख
- 17 पश्चिम राजस्थान
- 18 पूर्वी राजस्थान
- 19 पश्चिम मध्य प्रदेश
- 20 पूर्वी मध्य प्रदेश
- 21 गुजरात क्षेत्र
- 22 सौराष्ट्र एवं कच्छ
- 23 कोंकण एवं गोवा
- 24 मध्य महाराष्ट्र
- 25 मराठावाड़ा
- 26 विदर्भ
- 27 छत्तीसगढ़
- 28 तटीय आंध्र प्रदेश एवं यनम
- 29 तेलंगाना
- 30 रायलसीमा
- 31 तमिलनाडु, पुदुचेरी एवं कराईकल
- 32 तटिय कर्नाटक
- 33 आंतरिक उत्तरी कर्नाटक
- 34 आंतरिक दक्षिणी कर्नाटक
- 35 केरल एवं माहे
- 36 लक्षद्वीप



1. Andaman & Nicobar Islands
2. Arunachal Pradesh
3. Assam & Meghalaya
4. Nagaland, Manipur, Mizoram & Tripura
5. Sub-Himalayan West Bengal & Sikkim
6. Gangetic West Bengal
7. Orissa
8. Jharkhand
9. Bihar
10. East Uttar Pradesh
11. West Uttar Pradesh
12. Uttarakhand
13. Haryana, Chd & Delhi
14. Punjab
15. Himachal Pradesh
16. Jammu & Kashmir and Ladakh
17. West Rajasthan
18. East Rajasthan
19. West Madhya Pradesh
20. East Madhya Pradesh
21. Gujarat
22. Saurashtra
23. Konkan & Goa
24. Madhya Maharashtra
25. Marathawada
26. Vidharbha
27. Chhattisgarh
28. Coastal Andhra Pradesh & Yanam
29. Telangana
30. Rayalaseema
31. Tamilnadu, Puducherry & Karaikal
32. Coastal Karnataka
33. North Interior Karnataka
34. South Interior Karnataka
35. Kerala & Mahe
36. Lakshadweep

SPATIAL DISTRIBUTION (% of Stations reporting)

% Stations	Category	% Stations	Category
76-100	Widespread (WS/Most Places)	26-50	Scattered (SCT/ A Few Places)
51-75	Fairly Widespread (FWS/ Many Places)	1-25	Isolated (ISOL)

Subdivision Colour

- NO WARNING
- WATCH (BE UPDATED)
- ALERT (BE PREPARED TO TAKE ACTION)
- WARNING (TAKE ACTION)

Probabilistic Forecast

Terms	Probability of Occurrence (%)
Unlikely	< 25
Likely	25 - 50
Very Likely	50 - 75
Most Likely	> 75

-  Heavy Rain

 Thunderstorm & Lightning

 Strong surface winds

 Cold Wave

 Hot & Humid

 Very Heavy Rain

 Hailstorm

 Heat Wave

 Cold Day

 Extremely Heavy Rain

 Dust Storm

 Hot Day

 Ground Frost

 Heavy Snow

 Dust Raising Winds

 Warm Night

 Fog

*Red color warning does not mean "Red Alert" Red color warning means "Take Action"

Forecast and warning for any day is valid from 0830 hours IST of day till 0830 hours IST of next day

For more details kindly visit <https://mausam.imd.gov.in> or contact 011-2434-4599

(Service to the nation since 1875)

LEGENDS

WARNING

WARNING (TAKE ACTION)
ALERT (BE PREPARED)
WATCH (BE UPDATED)
NO WARNING (NO ACTION)

Probabilistic Forecast

Terms	Probability of Occurrence (%)
Unlikely	< 25
Likely	25 - 50
Very Likely	50 - 75
Most Likely	> 75



Heavy: 64.5 to 115.5 mm/cm *
Very Heavy: 115.6 to 204.4 mm/cm *
Extremely Heavy: > 204.4 mm/cm *



When maximum temperature of a station reaches $\geq 40^{\circ}\text{C}$ for plains and $\geq 30^{\circ}\text{C}$ for hilly regions
(a) Based on Departure from normal

Heat Wave: Maximum Temperature Departure from normal 4.5°C to 6.4°C .
Severe Heat Wave: Maximum Temperature Departure from normal $\geq 6.5^{\circ}\text{C}$

(b). Based on Actual maximum temperature

Heat Wave: When actual maximum temperature $\geq 45^{\circ}\text{C}$.
Severe Heat Wave: When actual maximum temperature $\geq 47^{\circ}\text{C}$

(c). Criteria for heat wave for coastal stations

When maximum temperature departure is $> 4.5^{\circ}\text{C}$ from normal. Heat Wave may be described provided maximum temperature $\geq 37^{\circ}\text{C}$



When maximum temperature remains 40°C

Warm Night: When minimum temperature departure 4.5°C to 6.4°C .
Severe Warm Night: When minimum temperature departure $> 6.4^{\circ}\text{C}$.



When minimum temperature of a station $\leq 10^{\circ}\text{C}$ for plains and $\leq 0^{\circ}\text{C}$ for hilly regions.

(a). Based on departure

Cold Wave: Minimum Temperature Departure from normal -4.5°C to -6.4°C .
Severe Cold Wave: Minimum Temperature Departure from normal $\leq -6.5^{\circ}\text{C}$

(b) Based on actual Minimum Temperature (for Plains only)

Cold Wave: When Minimum Temperature is $\leq 4.0^{\circ}\text{C}$
Severe Cold Wave: When Minimum Temperature is $\leq 2.0^{\circ}\text{C}$

(c) For Coastal Stations

When Minimum Temperature departure is $\leq -4.5^{\circ}\text{C}$ & actual Minimum Temperature is $\leq 15^{\circ}\text{C}$



When minimum temperature of a station $\leq 10^{\circ}\text{C}$ for plains and $\leq 0^{\circ}\text{C}$ for hilly regions
Based on departure

Cold Day: Maximum Temperature Departure from normal -4.5°C to -6.4°C .
Severe Cold Day: Maximum Temperature Departure from normal $\leq -6.5^{\circ}\text{C}$



Phenomenon of small droplets suspended in air and the horizontal visibility $< 1\text{km}$

Moderate Fog: When the visibility between 500-200 metres
Dense Fog: when the visibility between 50-200 metres
Very Dense Fog: when the visibility < 50 metres



Sudden electrical discharges manifested by a flash of light (Lightning) and a sharp rumbling sound (thunder)



An ensemble of particles of dust or sand energetically lifted to great heights by a strong and turbulent wind.



Ice deposits on ground

Air temperature $\leq 4^{\circ}\text{C}$ (over Plains)



A strong wind that rises suddenly, lasts for at least 1 minute.

Moderate: Wind speed 52-61 kmph
Severe: Wind speed 62-87 kmph
Very Severe: Wind speed > 87 kmph



Effect of various waves in the sea over specific area

Rough to very rough: Wind speed 41-62 kmph (22-33 knots) & Wave height 2.5-6 metre
High to very high: Wind speed 63-117 kmph (34-63 knots) & Wave height 6-14 metre
Phenomenal: Wind speed > 117 kmph (> 63 knots) & Wave height > 14 metre



Cyclonic Storm: Wind speed 62-87 kmph (34-47 knots)

Severe Cyclonic Storm: Wind speed 88-117 kmph (48-63 knots)
Very Severe Cyclonic Storm: Wind speed 118-165 kmph (64-89 knots)
Extremely Severe Cyclonic Storm: Wind speed 166-220 kmph (90-119 knots)
Super Cyclone Storm: Wind speed > 220 kmph (> 119 knots)

*Red color warning does not mean "Red Alert" Red color warning means "Take Action"

Forecast and warning for any day is valid from 0830 hours IST of day till 0830 hours IST of next day

For more details kindly visit <https://mausam.imd.gov.in> or contact 011-2434-4599

(Service to the nation since 1875)