

## ALL INDIA WEATHER SUMMARY AND FORECAST BULLETIN

### Significant Weather Features

#### Weather systems, Forecast & Warnings:

- **Isolated** light rainfall/snowfall likely over Jammu-Kashmir with the possibility of increase to **scattered to fairly widespread light to moderate rainfall/snowfall during 10<sup>th</sup>-12<sup>th</sup>** and decrease to **Isolated** light rainfall/snowfall on 13<sup>th</sup> and 14<sup>th</sup> March. **Isolated to scattered** light rainfall/snowfall also likely over Himachal Pradesh and Uttarakhand during 10<sup>th</sup> -14<sup>th</sup> March. **Isolated thunderstorm, lightning & gusty winds speed reaching (30-50 kmph)** likely over Jammu-Kashmir on 09<sup>th</sup> & 10<sup>th</sup> and over Himachal Pradesh on 11<sup>th</sup> & 12<sup>th</sup> March.
- **Isolated to Scattered** light/moderate rainfall with **thunderstorm, lightning & gusty winds speed reaching (30-50 kmph)** likely over East India during 09<sup>th</sup>-11<sup>th</sup> March and over Northeast India during 10<sup>th</sup>-14<sup>th</sup> March.

#### Heat Wave and Hot & Humid weather Warnings:

- **Heat wave to severe heat wave conditions** very likely to continue in isolated pockets over Himachal Pradesh on 08<sup>th</sup> & 09<sup>th</sup> March  
**Heat wave conditions** likely to prevail in isolated pockets over Vidarbha during 08<sup>th</sup> to 12<sup>th</sup>; West Rajasthan and Saurashtra & Kutch during 08<sup>th</sup> to 10<sup>th</sup>; North Gujarat Region on 09<sup>th</sup> & 10<sup>th</sup> March and Marathwada on 10<sup>th</sup> & 11<sup>th</sup> March.  
**Hot & humid conditions** very likely to prevail in isolated pockets over Konkan on 08<sup>th</sup> & 09<sup>th</sup>; coastal areas of Gujarat Region on 09<sup>th</sup> & 10<sup>th</sup>; coastal areas of Saurashtra & Kutch during 08<sup>th</sup>-11<sup>th</sup> March.  
**Hot & humid conditions** very likely to prevail at a few places over south Coastal Andhra Pradesh and adjoining districts of Rayalaseema and north Tamil Nadu on 08<sup>th</sup> March.

#### Forecast of maximum/day temperatures:

- No significant change in maximum temperature likely over Western Himalayan region during next 2 days and gradual fall by 4-5°C during subsequent 5 days. Over the plains of Northwest India, gradual rise in maximum temperature by 1-2°C during next 4 days and fall by 2-3°C during subsequent 3 days. **Hence, Day temperatures likely to continue to remain above normal by 5-8°C over Jammu-Kashmir & Himachal Pradesh; by 3-5°C over remaining parts of plains of Northwest India during next 3 days till 10<sup>th</sup> March.**  
No significant change in maximum temperatures likely over Central India during next 3 days and rise by about 2°C during subsequent 2 days.  
No significant change in maximum temperature likely over East India during next 4 days and gradual rise by 2-3°C during subsequent 3 days.  
Gradual rise in maximum temperatures by 2-3°C likely over Maharashtra during next 4 days and no significant change during subsequent 3 days.  
Gradual rise in maximum temperatures by 2-3°C likely over Gujarat State during next 3 days and no significant change during subsequent 4 days.  
No significant change in maximum temperature likely over South Peninsular India during next 5 days and gradual rise by 2-3°C during subsequent 2 days. **Day temperatures likely to be above normal by 2-3°C over Southeast Peninsular India during next 5 days.**  
No significant change in maximum temperatures likely over rest parts of the country.

### Main Weather Observations:

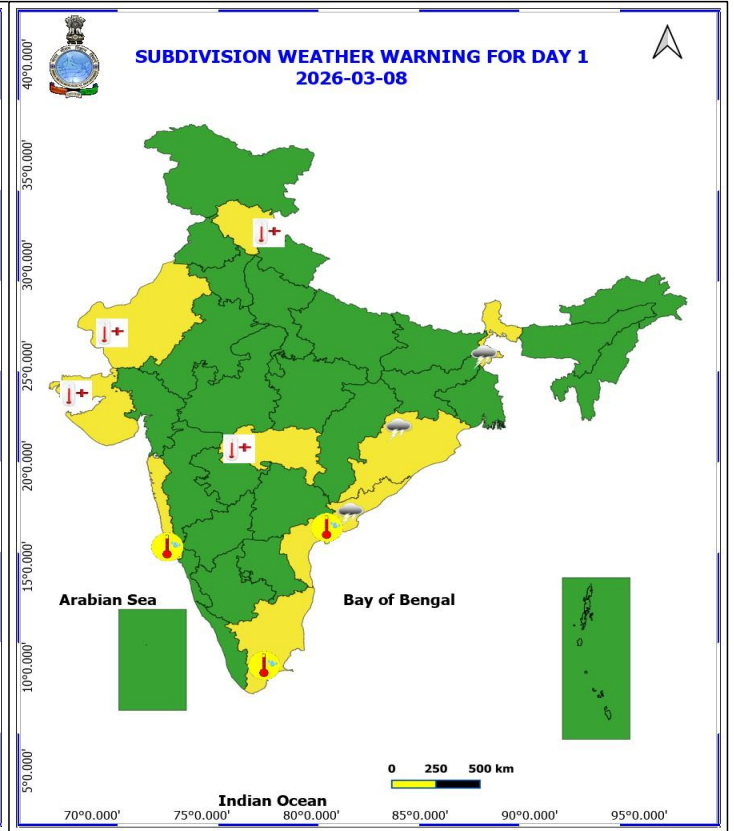
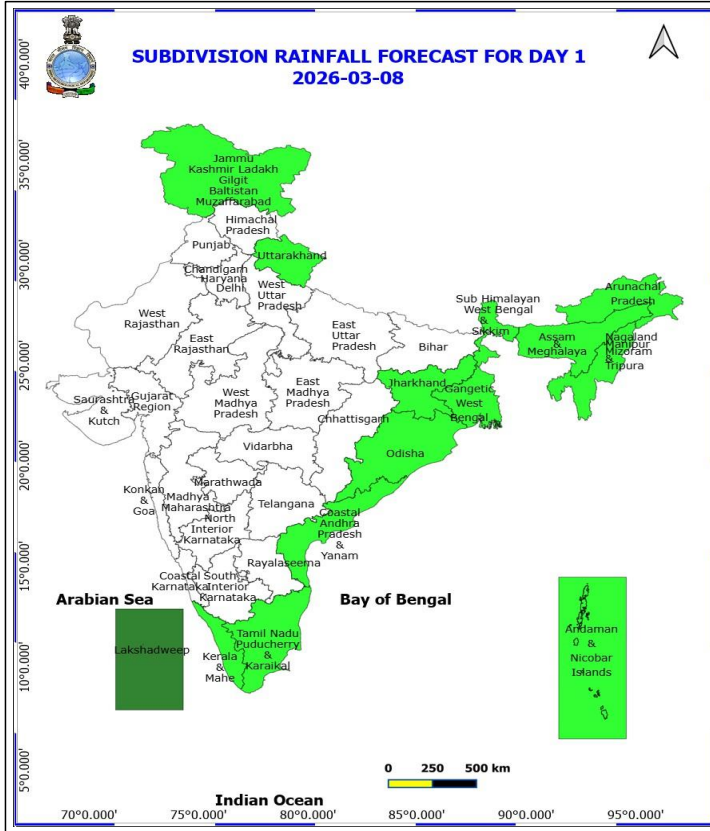
- ❖ **Rainfall distribution** (from 0830 hours IST of yesterday to 0830 hours IST of today): **at isolated places** over Sub Himalayan West Bengal & Sikkim, Jammu-Kashmir Ladakh-Gilgit-Baltistan-Muzaffarabad and Kerala & Mahe; **Dry** over rest of the country.
- ❖ **Significant rainfall recorded(in cm)** (from 0830 hours IST of yesterday to 0830 hours IST of today): **Kerala & Mahe**: Konni (dist Pathanamthitta), Konni ARG (dist Pathanamthitta) 1 Each.
- ❖ **Heat wave to severe heat wave conditions** prevailed in isolated pockets over Himachal Pradesh and **Heat wave conditions** in isolated pockets over Vidarbha.
- ❖ **Minimum Temperature Departures (as on 08-03-2026): markedly above normal (5.1°C or more)** at many places over Bihar, Punjab; at a few places over Arunachal Pradesh, East Uttar Pradesh, Himachal Pradesh, Jammu-Kashmir-Ladakh, Uttarakhand, West Rajasthan; at isolated places over Assam, Gangetic West Bengal, north Haryana, Chandigarh, Odisha, West Bengal, West Uttar Pradesh; **appreciably above normal (3.1°C to 5.0°C)** at many places over Nagaland, Manipur, Mizoram & Tripura; at a few places over East Rajasthan, Jharkhand; at isolated places over Chhattisgarh, Delhi, Saurashtra & Kutch, West Madhya Pradesh; **above normal (1.6°C to 3.0°C)** at a few places over Gujarat Region, Konkan & Goa, Madhya Maharashtra; at isolated places over Coastal Andhra Pradesh & Yanam, Kerala & Mahe, Vidarbha, Marathwada, Tamil Nadu, Puducherry & Karaikal and **below normal (-3.0°C to -1.6°C)** at isolated places over Telangana, Vidarbha. **The lowest minimum temperature** of 12.4°C is reported at RAJGARH-OBS (MADHYA PRADESH) over the Plains of India.
- ❖ **Maximum Temperature Departures (as on 07-03-2026): markedly above normal by 5.0-8.0°C** at most places over Jammu-Kashmir-Ladakh; at many places over east & central Himachal Pradesh; at a few places over West Rajasthan; at isolated places over northeast Assam, south Haryana and south Uttarakhand. **appreciably above normal by 3.0-5.0°C** over remaining parts of northwest India adjoining central India, north Gujarat, interior Maharashtra, west Chhattisgarh and remaining parts of assam, Meghalaya, Arunachal Pradesh, north Nagaland, north Tripura. **above normal by 1.6-3.0°C** remaining parts of central India and adjoining east India and north & southeast peninsular India and remaining parts of northeast India and **near normal** over rest parts of India. **The highest maximum temperature** of 40.8°C is reported at **AKOLA (MAHARASHTRA)**.

**Meteorological Analysis (Based on 1430 hours IST)**

- ❖ The **upper air cyclonic circulation** over Gangetic West Bengal adjoining north Odisha at 1.5 km above mean sea level persists.
- ❖ The **upper air cyclonic circulation** over northeast Assam & neighbourhood at 1.5 km above mean sea level persists.
- ❖ The **trough** from Bihar to south Chhattisgarh across Jharkhand at 0.9 km above mean sea level persists.
- ❖ The **trough** along Long. 88°E to the north of Lat. 20°N at 3.1 km above mean sea level persists.
- ❖ The **upper air cyclonic circulation** over Gulf of Mannar & neighbourhood at 0.9 km above mean sea level persists.
- ❖ **Subtropical westerly Jet Stream** with core winds of the order of 90 knots at 12.6 km above mean sea level continues to prevail over Jammu & Kashmir.
- ❖ A fresh **Western Disturbance** is likely to affect Western Himalayan region from 09<sup>th</sup> March, 2026.

**Weather Outlook for subsequent 3 days**

- ◆ Isolated to Scattered rainfall activity likely over Western Himalayan region, South Peninsular India, East India and Nicobar Islands.
- ◆ Scattered to fairly widespread rainfall activity likely over Northeast India.



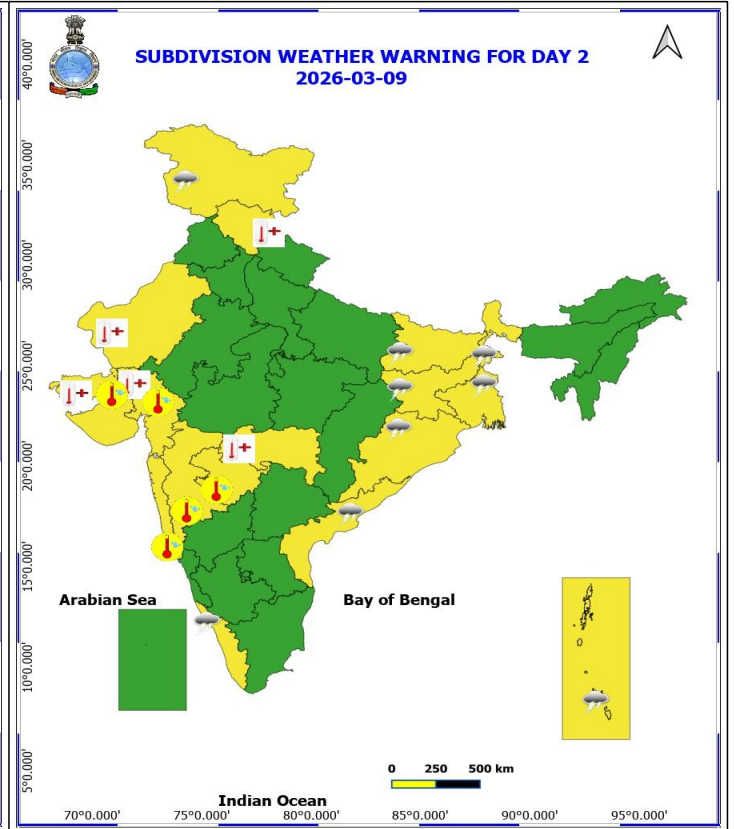
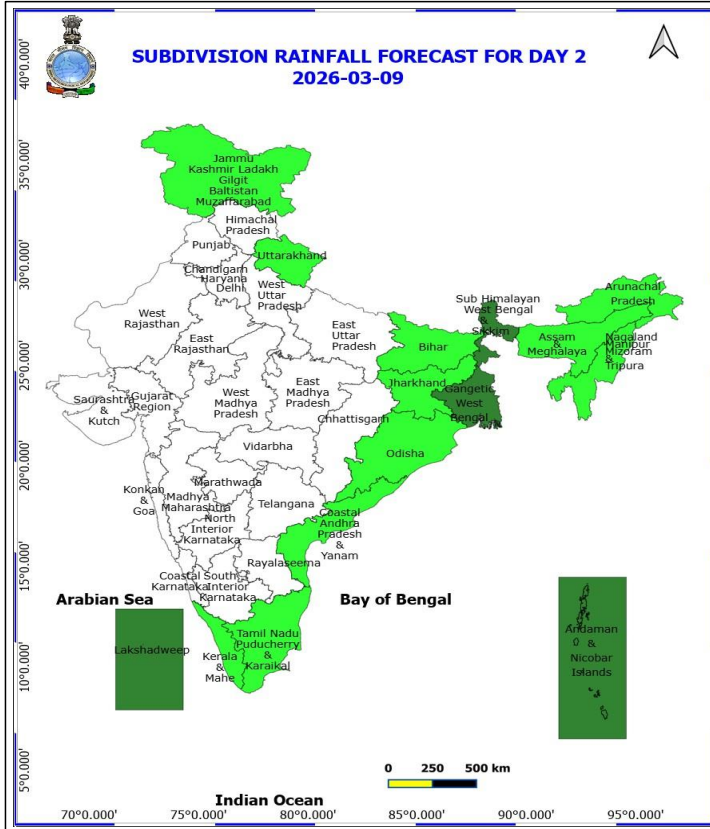
**8 March (Day 1)**

- ❖ **Thunderstorm accompanied with lightning & gusty winds(30-40kmph)** very likely at isolated places over Odisha and Sub Himalayan West Bengal & Sikkim.
- ❖ **Thunderstorm accompanied with Lightning** very likely at isolated places over Coastal Andhra Pradesh.
- ❖ **Heat Wave conditions** very likely at isolated places over Saurashtra & Kutch, Vidarbha and West Rajasthan.
- ❖ **Heat Wave to Severe Heat Wave conditions** very likely at isolated places over Himachal Pradesh.
- ❖ **Hot and Humid weather** very likely at isolated places over Coastal Andhra Pradesh, Konkan & Goa and Tamil Nadu Puducherry & Karaikal.

**No Fishermen Warning**

**\*Red color warning does not mean "Red Alert" Red color warning means "Take Action"**  
Forecast and warning for any day is valid from 0830 hours IST of day till 0830 hours IST of next day  
For more details kindly visit <https://mausam.imd.gov.in> or contact 011-2434-4599

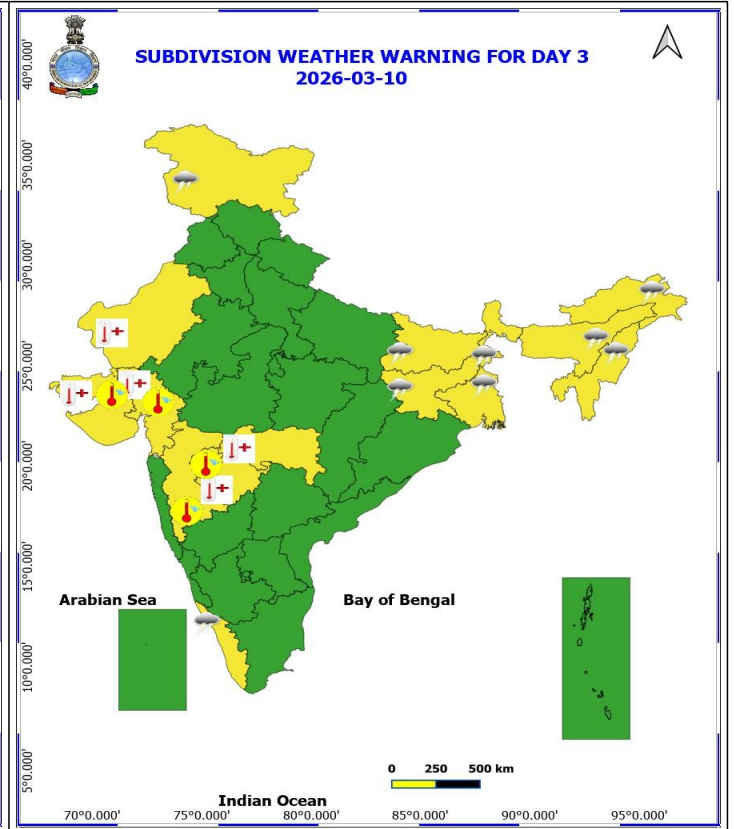
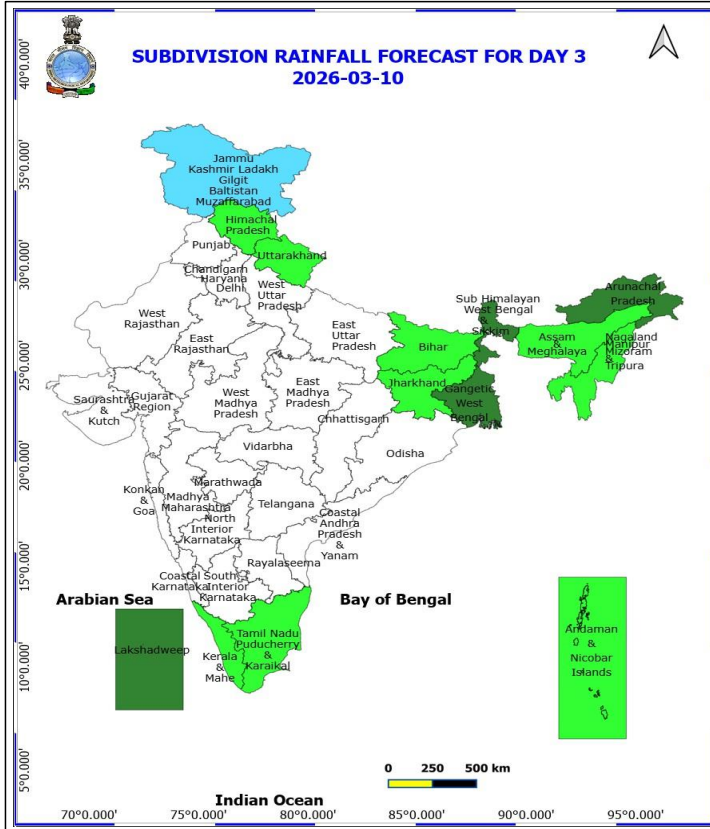
(Service to the nation since 1875)



### 9 March (Day 2)

- ❖ **Thunderstorm accompanied with lightning & gusty winds(40-50kmph)** very likely at isolated places over Gangetic West Bengal.
- ❖ **Thunderstorm accompanied with lightning & gusty winds(30-40kmph)** very likely at isolated places over Andaman & Nicobar Islands, Bihar, Jammu-Kashmir-Ladakh-Gilgit-Baltistan-Muzaffarabad, Jharkhand, Odisha and Sub Himalayan West Bengal & Sikkim.
- ❖ **Thunderstorm accompanied with Lightning** very likely at isolated places over Coastal Andhra Pradesh and Kerala & Mahe.
- ❖ **Heat Wave conditions** very likely at isolated places over Gujarat State, Vidarbha and West Rajasthan.
- ❖ **Heat Wave to Severe Heat Wave conditions** very likely at isolated places over Himachal Pradesh.
- ❖ **Hot and Humid weather** very likely at isolated places over Gujarat State, Konkan & Goa, Madhya Maharashtra and Marathwada.

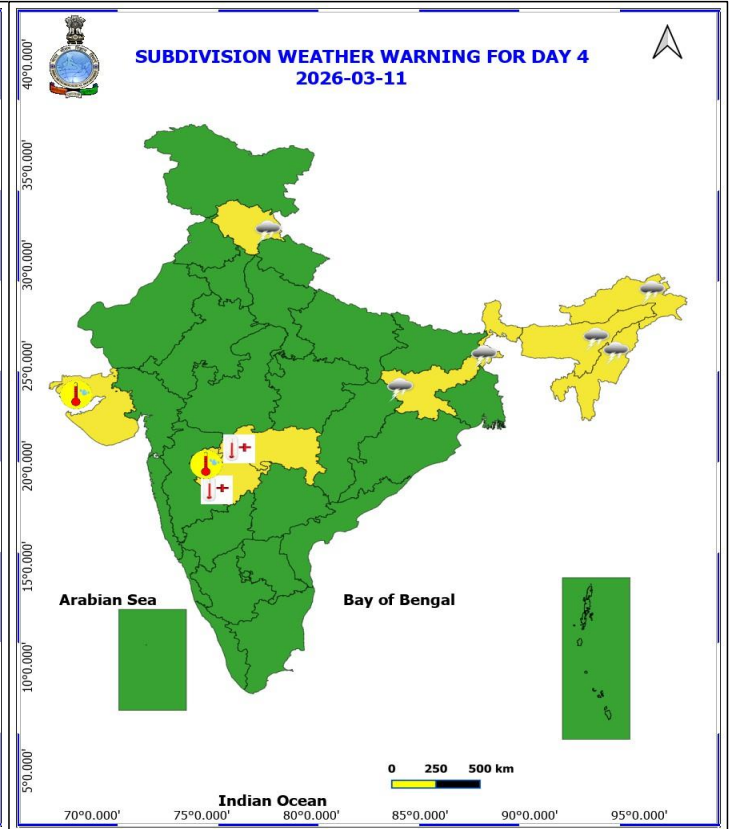
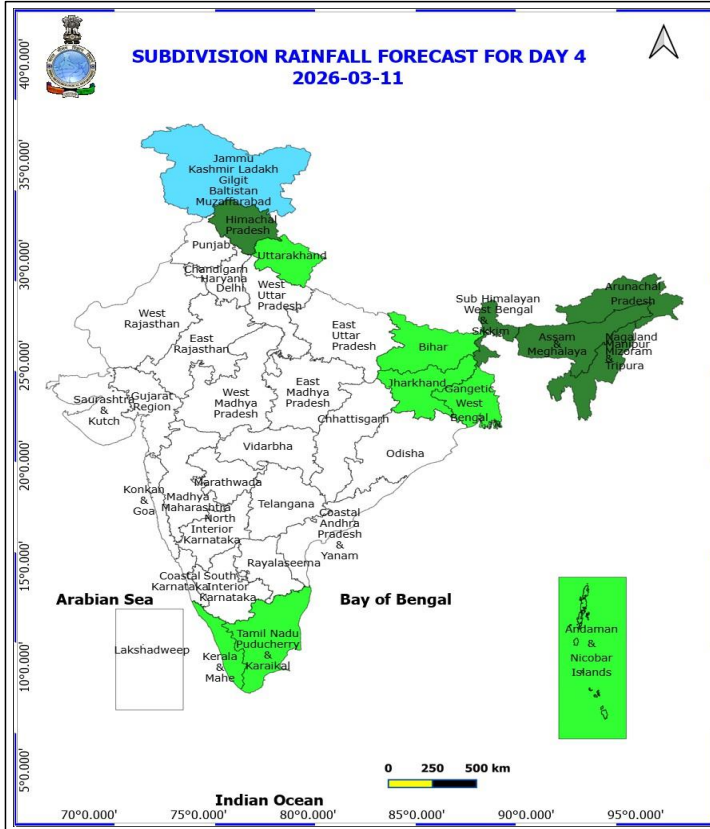
**No Fishermen Warning**



### 10 March (Day 3)

- ❖ **Thunderstorm accompanied with lightning & gusty winds(30-40kmph)** very likely at isolated places over Bihar, Jammu-Kashmir-Ladakh-Gilgit-Baltistan-Muzaffarabad, Jharkhand and West Bengal & Sikkim.
- ❖ **Thunderstorm accompanied with Lightning** very likely at isolated places over Arunachal Pradesh, Assam & Meghalaya, Kerala & Mahe and Nagaland, Manipur, Mizoram and Tripura.
- ❖ **Heat Wave conditions** very likely at isolated places over Gujarat State, Marathwada, Vidarbha and West Rajasthan.
- ❖ **Hot and Humid weather** very likely at isolated places over Gujarat State, Madhya Maharashtra and Marathwada.

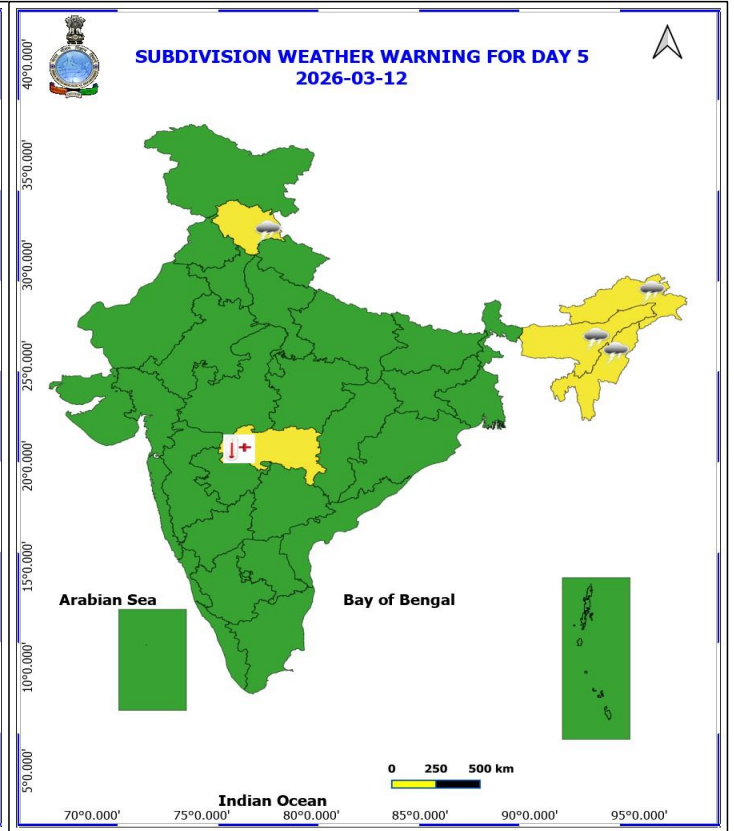
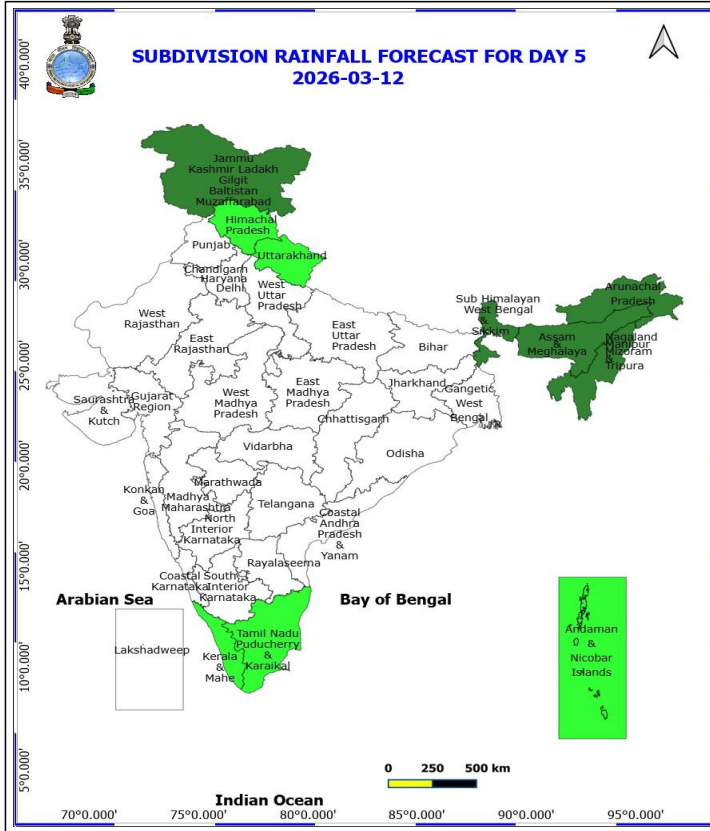
**No Fishermen Warning**



### 11 March (Day 4)

- ❖ **Thunderstorm accompanied with lightning & gusty winds(40-50kmph)** likely at isolated places over Himachal Pradesh.
- ❖ **Thunderstorm accompanied with lightning & gusty winds(30-40kmph)** likely at isolated places over Jharkhand.
- ❖ **Thunderstorm accompanied with Lightning** likely at isolated places over Arunachal Pradesh, Assam & Meghalaya, Nagaland, Manipur, Mizoram and Tripura and Sub Himalayan West Bengal & Sikkim.
- ❖ **Heat Wave conditions** likely at isolated places over Marathwada and Vidarbha.
- ❖ **Hot and Humid weather** likely at isolated places over Marathwada and Saurashtra & Kutch.

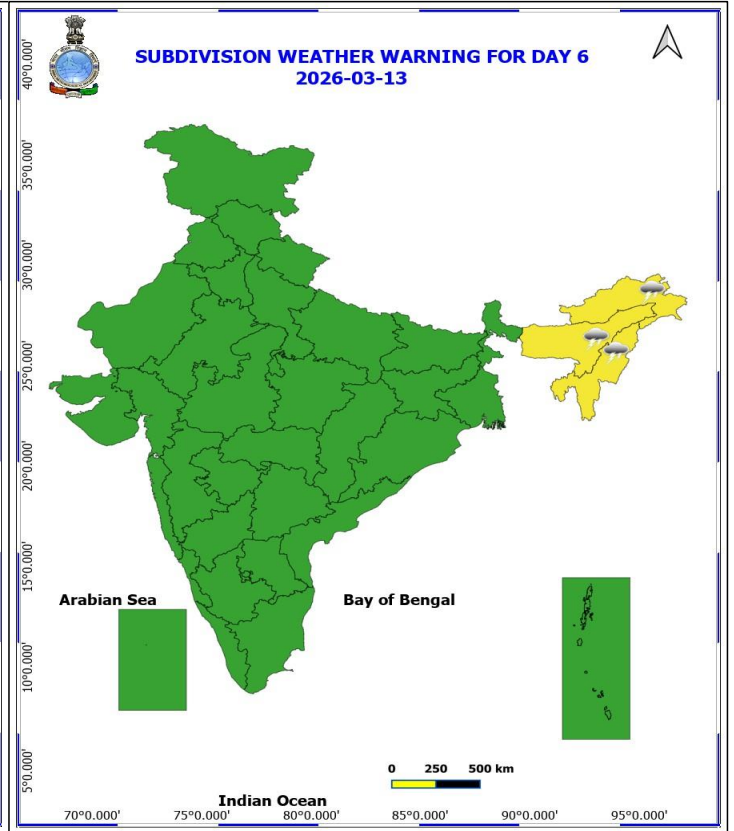
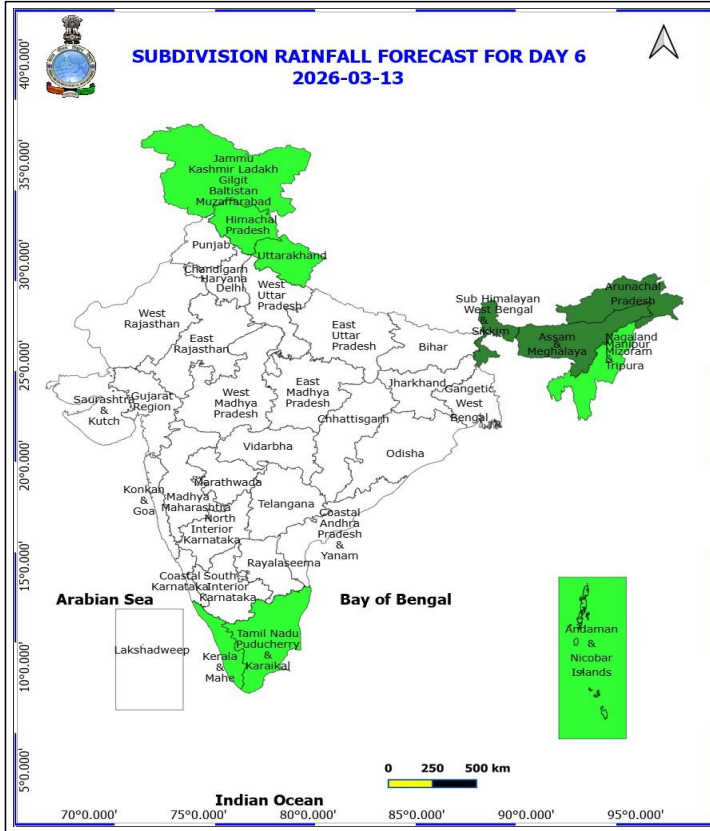
**No Fishermen Warning**



## 12 March (Day 5)

- ❖ **Thunderstorm accompanied with lightning & gusty winds(30-40kmph)** likely at isolated places over Himachal Pradesh.
- ❖ **Thunderstorm accompanied with Lightning** likely at isolated places over Arunachal Pradesh, Assam & Meghalaya and Nagaland, Manipur, Mizoram and Tripura.
- ❖ **Heat Wave conditions** likely at isolated places over Vidarbha.

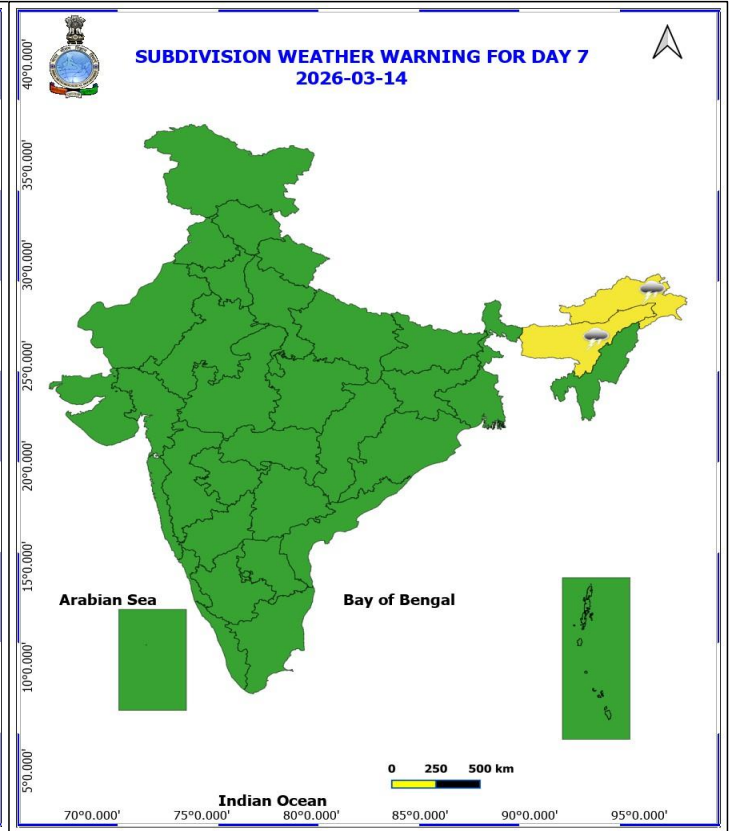
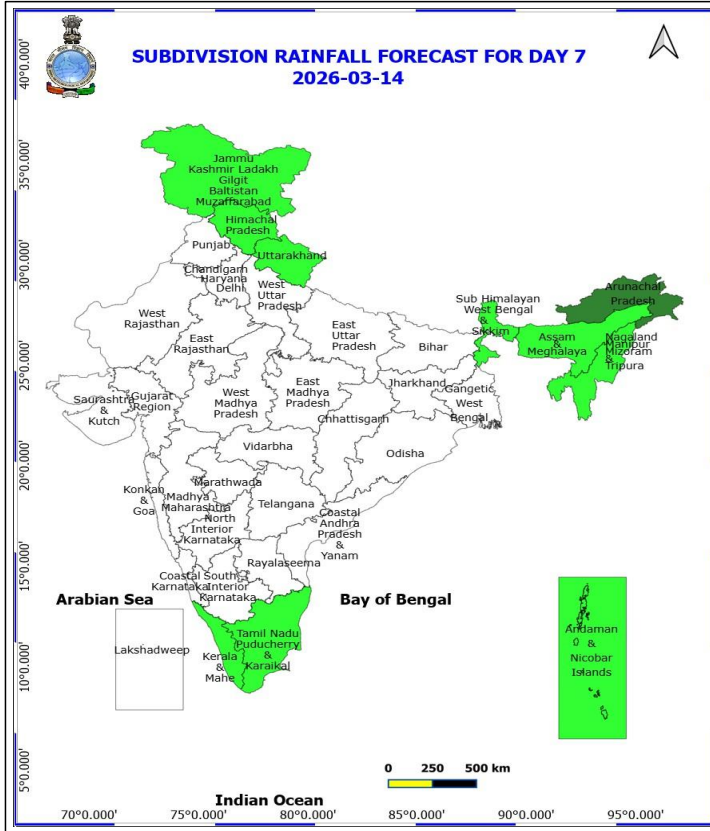
**No Fishermen Warning**



**13 March (Day 6)**

❖ **Thunderstorm accompanied with Lightning** likely at isolated places over Arunachal Pradesh, Assam & Meghalaya and Nagaland, Manipur, Mizoram and Tripura.

**No Fishermen Warning**



14 March (Day 7)

❖ Thunderstorm accompanied with Lightning likely at isolated places over Arunachal Pradesh and Assam & Meghalaya.

No Fishermen Warning

\*Red color warning does not mean "Red Alert" Red color warning means "Take Action"  
Forecast and warning for any day is valid from 0830 hours IST of day till 0830 hours IST of next day  
For more details kindly visit <https://mausam.imd.gov.in> or contact 011-2434-4599

(Service to the nation since 1875)



## Table-1

### 7 Days Rainfall Forecast

S.No.	Subdivision	8- Mar	9- Mar	10- Mar	11- Mar	12- Mar	13- Mar	14- Mar
		Day 1	Day 2	Day 3	Day 4	Day 5	Day 6	Day 7
1	ANDAMAN & NICOBAR ISLANDS	ISOL	SCT	ISOL	ISOL	ISOL	ISOL	ISOL
2	ARUNACHAL PRADESH	ISOL	ISOL	SCT	SCT	SCT	SCT	SCT
3	ASSAM & MEHGHALAYA	ISOL	ISOL	ISOL	SCT	SCT	SCT	ISOL
4	N. M. M. & T.	ISOL	ISOL	ISOL	SCT	SCT	ISOL	ISOL
5	S.H. WEST BENGAL & SIKKIM	ISOL	SCT	SCT	SCT	SCT	SCT	ISOL
6	GANGETIC WEST BENGAL	ISOL	SCT	SCT	ISOL	DRY	DRY	DRY
7	ODISHA	ISOL	ISOL	DRY	DRY	DRY	DRY	DRY
8	JHARKHAND	ISOL	ISOL	ISOL	ISOL	DRY	DRY	DRY
9	BIHAR	DRY	ISOL	ISOL	ISOL	DRY	DRY	DRY
10	EAST UTTAR PRADESH	DRY	DRY	DRY	DRY	DRY	DRY	DRY
11	WEST UTTAR PRADESH	DRY	DRY	DRY	DRY	DRY	DRY	DRY
12	UTTARAKHAND	ISOL	ISOL	ISOL	ISOL	ISOL	ISOL	ISOL
13	HARYANA, CHD & DELHI	DRY	DRY	DRY	DRY	DRY	DRY	DRY
14	PUNJAB	DRY	DRY	DRY	DRY	DRY	DRY	DRY
15	HIMACHAL PRADESH	DRY	DRY	ISOL	SCT	ISOL	ISOL	ISOL
16	JAMMU AND KASHMIR AND LADAKH	ISOL	ISOL	FWS	FWS	SCT	ISOL	ISOL
17	WEST RAJASTHAN	DRY	DRY	DRY	DRY	DRY	DRY	DRY
18	EAST RAJASTHAN	DRY	DRY	DRY	DRY	DRY	DRY	DRY
19	WEST MADHYA PRADESH	DRY	DRY	DRY	DRY	DRY	DRY	DRY
20	EAST MADHYA PRADESH	DRY	DRY	DRY	DRY	DRY	DRY	DRY
21	GUJRAT REGION	DRY	DRY	DRY	DRY	DRY	DRY	DRY
22	SAURASHTRA & KUTCH	DRY	DRY	DRY	DRY	DRY	DRY	DRY
23	KONKAN & GOA	DRY	DRY	DRY	DRY	DRY	DRY	DRY
24	MADHYA MAHARASHTRA	DRY	DRY	DRY	DRY	DRY	DRY	DRY
25	MARATHWADA	DRY	DRY	DRY	DRY	DRY	DRY	DRY
26	VIDARBHA	DRY	DRY	DRY	DRY	DRY	DRY	DRY
27	CHATTISGARH	DRY	DRY	DRY	DRY	DRY	DRY	DRY
28	COASTAL ANDHRA PRADESH	ISOL	ISOL	DRY	DRY	DRY	DRY	DRY
29	TELANGANA	DRY	DRY	DRY	DRY	DRY	DRY	DRY
30	RAYALASEEMA	DRY	DRY	DRY	DRY	DRY	DRY	DRY
31	TAMILNADU & PUDUCHERRY	ISOL	ISOL	ISOL	ISOL	ISOL	ISOL	ISOL
32	COSTAL KARNATAKA	DRY	DRY	DRY	DRY	DRY	DRY	DRY
33	NORTH INTERIOR KARNATAKA	DRY	DRY	DRY	DRY	DRY	DRY	DRY
34	SOUTH INTERIOR KARNATAKA	DRY	DRY	DRY	DRY	DRY	DRY	DRY
35	KERALA	ISOL	ISOL	ISOL	ISOL	ISOL	ISOL	ISOL
36	LAKSHDWEEP	SCT	SCT	SCT	DRY	DRY	DRY	DRY

Legend	Category	%Stations
WS	Widespread/Most Places	76-100
FWS	Fairly Widespread/Many Places	51-75
SCT	Scattered/ A Few Places	26-50
ISOL	Isolated Places	1-25
DRY	No Rain	0

**\*Red color warning does not mean "Red Alert" Red color warning means "Take Action"**  
Forecast and warning for any day is valid from 0830 hours IST of day till 0830 hours IST of next day  
For more details kindly visit <https://mausam.imd.gov.in> or contact 011-2434-4599

(Service to the nation since 1875)

Fig. 1: Maximum Temperatures Dated 2026-03-07

Fig. 2: Departure of Maximum Temp. Dated 2026-03-07

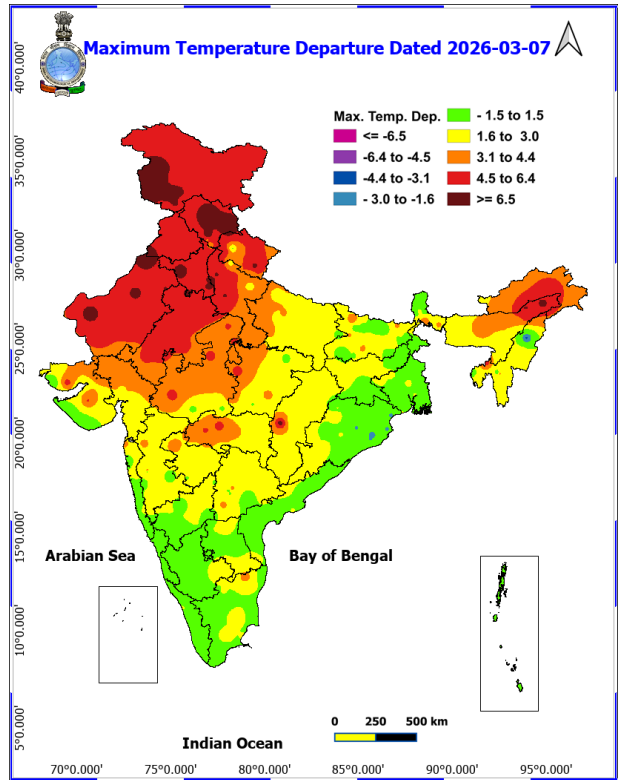
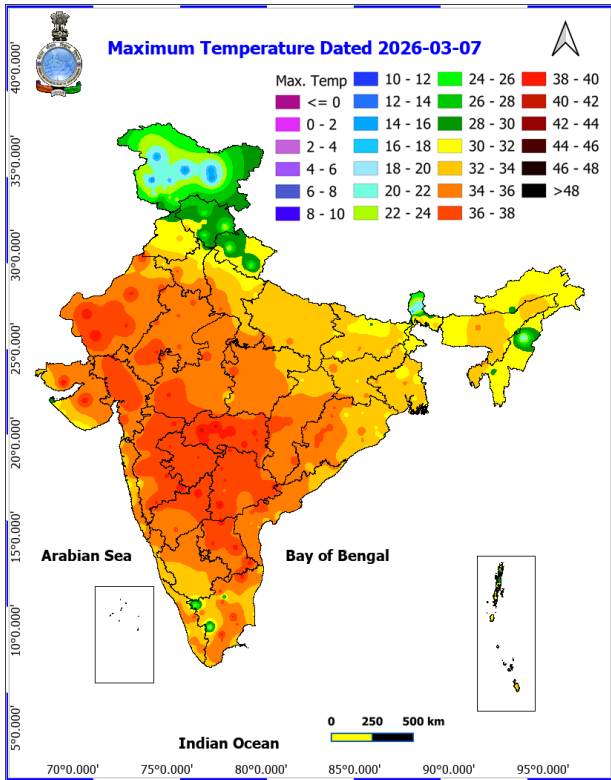
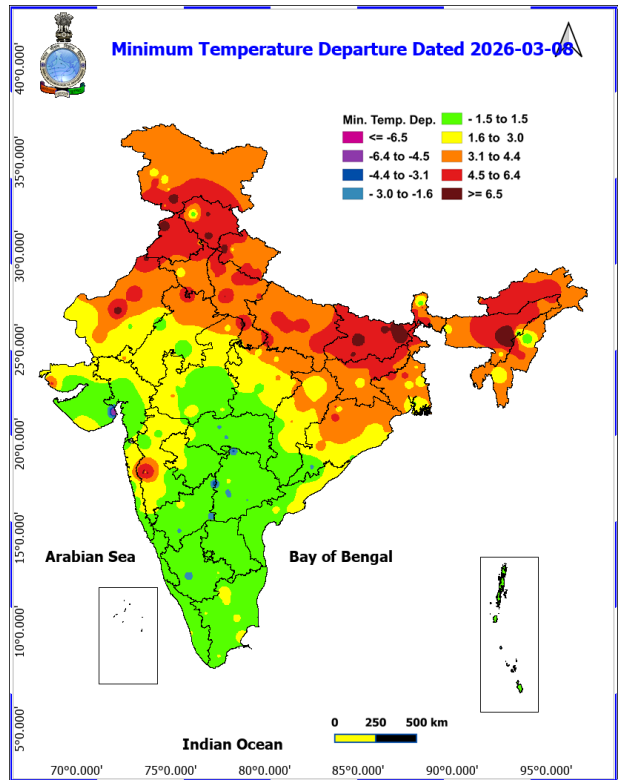
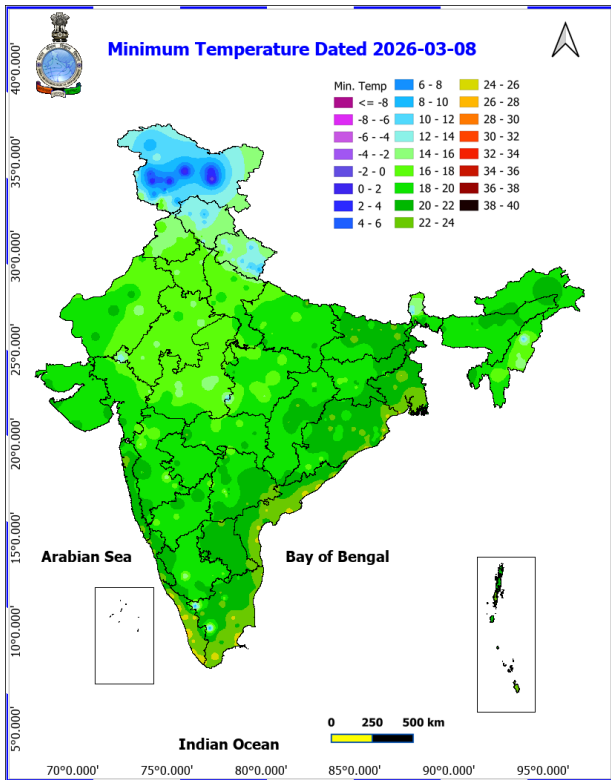
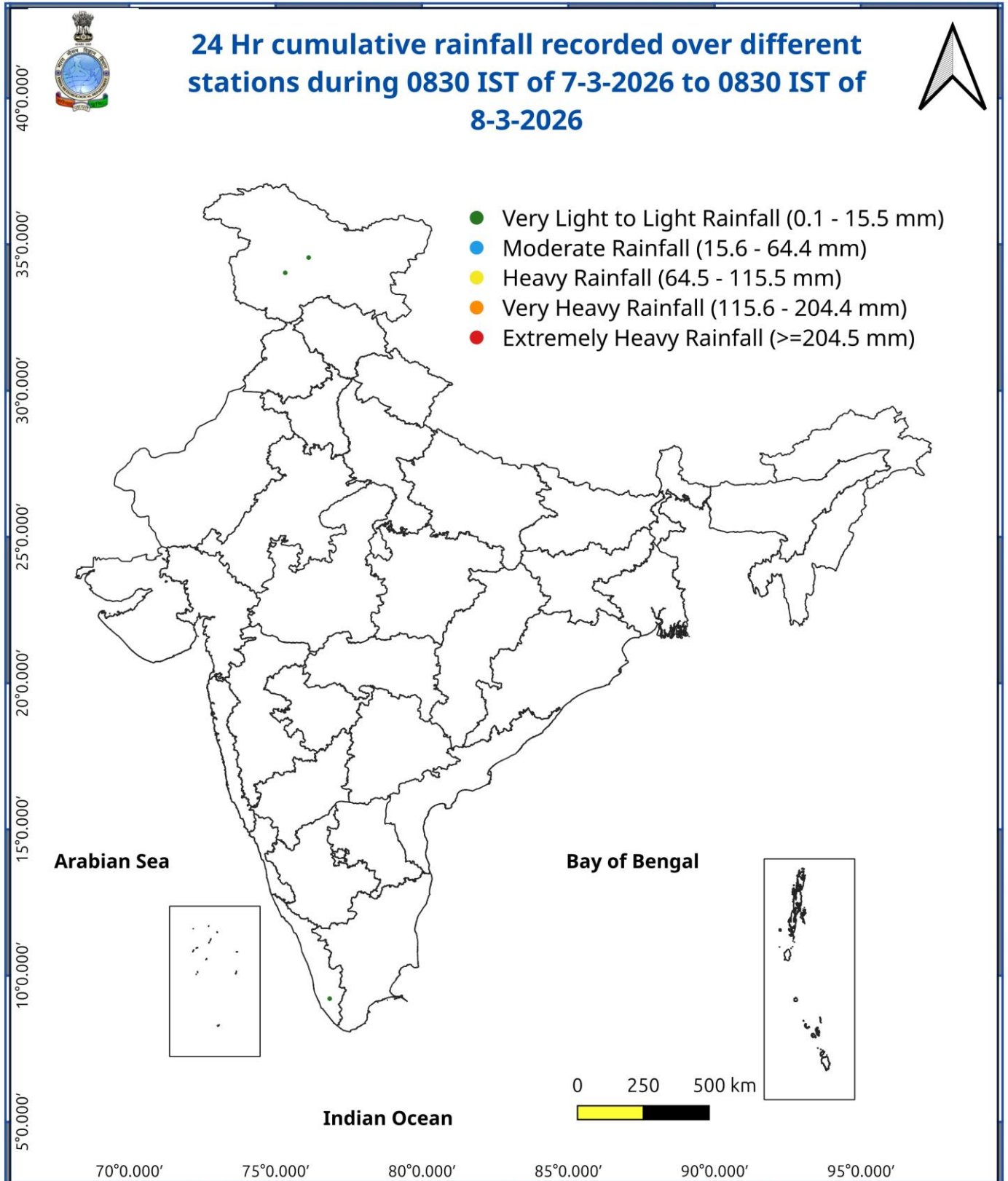


Fig. 3: Minimum Temperatures Dated 2026-03-08

Fig. 4: Departure of Minimum Temp. Dated 2026-03-08





### Impact expected and action suggested due Heat Wave conditions

- ♦ **Heat wave to severe heat wave conditions** isolated pockets over Himachal Pradesh on 08<sup>th</sup> & 09<sup>th</sup> March
- ♦ **Heat wave conditions** in isolated pockets over Vidarbha during 08<sup>th</sup> to 12<sup>th</sup>; West Rajasthan and Saurashtra & Kutch during 08<sup>th</sup> to 10<sup>th</sup>; North Gujarat Region on 09<sup>th</sup> & 10<sup>th</sup> March and Marathwada on 10<sup>th</sup> & 11<sup>th</sup> March.

### Yellow alert Areas

- ♦ Moderate temperature & heat is tolerable for general public but moderate health concern likely for vulnerable people e.g. infants, elderly, people with chronic diseases.
- ♦ Avoid heat exposure.
- ♦ Wear lightweight, light colour, loose, cotton clothes.
- ♦ Cover your head, use a cloth, hat or umbrella.

### Agromet advisories for various parts of the country

#### Likely Impact of Above normal Temperatures

- ♦ Increased evapotranspiration leading to soil moisture depletion and moisture stress, which may adversely affect crop growth, seed development and yield.
- ♦ Accelerated crop maturity, shortened grain filling duration and shrivelled grain formation, resulting in possible yield reduction in wheat crop.
- ♦ Increased moisture stress and reduced grain filling in cereals and other *rabi* crops such as *rabi* maize, sorghum and other late sown *rabi* crops (vegetative to reproductive stages).
- ♦ Flower drop, poor pod setting, premature pod drying and reduction in seed size and seed weight in oilseed and pulse crops.
- ♦ Reduced tuber bulking and early plant senescence in tuber crops such as potato.
- ♦ Flower drop, fruit sunscald and reduction in marketable yield in vegetable crops such as tomato, capsicum, cabbage and cauliflower.
- ♦ Flower drop, reduced fruit setting, premature fruit drop, fruit sunburn (or sunscald), reduction in fruit size, uneven ripening, deformities such as spongy tissue (especially in mango), along with an overall decrease in yield and quality in horticultural crops (such as mango, apple, orange, etc.).
- ♦ Increased crop water requirements and higher risk of water stress under limited irrigation conditions.
- ♦ Reduced feed intake, milk yield and egg production along with increased water requirement in livestock and poultry.

#### Agromet advisories for likely impact of Above normal Temperatures

- ♦ In **Jammu and Kashmir**, apply light irrigation to wheat, mustard and vegetables.
- ♦ In **Himachal Pradesh**, provide protective irrigation to wheat and early vegetables. Maintain ventilation in polyhouses for capsicum and tomato.
- ♦ In **Punjab**, maintain optimum soil moisture through irrigation in mustard, gobhi sarson and potato. Provide irrigation to wheat at grain filling stage as required.
- ♦ In **Haryana**, provide light irrigation to mustard and gram at flowering and pod formation stages. Maintain optimum soil moisture in wheat during grain filling stage.
- ♦ In **Uttarakhand**, provide light and frequent irrigation in wheat, lentil, chickpea and mustard during critical growth stages (flowering and grain filling in wheat, pod formation in mustard and gram etc.).
- ♦ In **Rajasthan**, provide protective irrigation in cumin, isabgol, mustard and gram during morning or evening hours to minimize heat stress.
- ♦ In **Uttar Pradesh**, provide light irrigation in wheat (grain filling stage), mustard and gram crops during morning or evening hours to reduce adverse impacts of heat.
- ♦ In **Gujarat**, apply light irrigation in wheat (grain filling stage), chickpea and cumin.
- ♦ In **Maharashtra**, apply irrigation at frequent intervals to reduce premature fruit drop and sun scorching in mango and undertake pre-harvest bagging of mango fruits using newspaper bags to prevent sun scalding in

**\*Red color warning does not mean "Red Alert" Red color warning means "Take Action"**

Forecast and warning for any day is valid from 0830 hours IST of day till 0830 hours IST of next day

For more details kindly visit <https://mausam.imd.gov.in> or contact 011-2434-4599

(Service to the nation since 1875)



**Konkan.** Apply irrigation in late sown *rabi* crops like wheat, groundnut, sesame, safflower, sorghum, orchards and vegetables as per requirement and use straw mulch to reduce evaporation losses in **Vidarbha**.

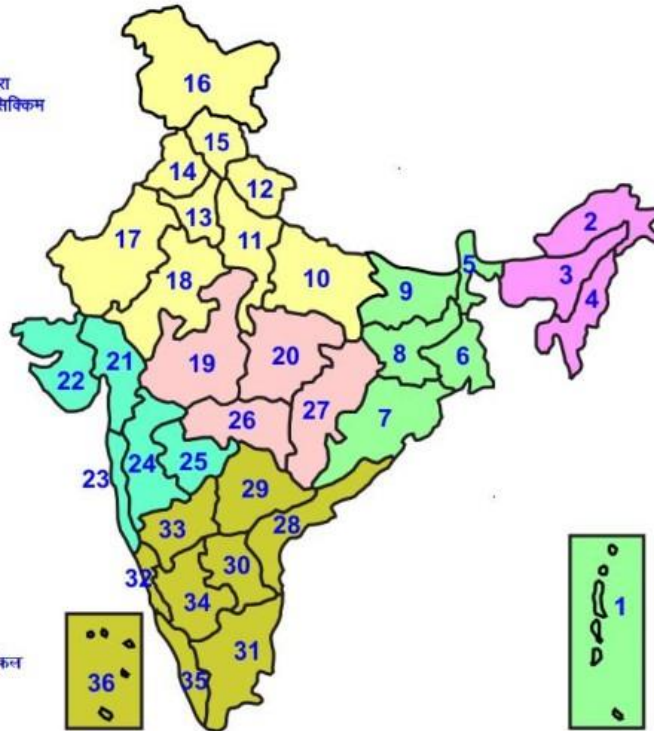
- ♦ In **Madhya Pradesh**, provide light and frequent irrigation in wheat and chickpea during critical stages. Complete harvesting of matured mustard during morning/evening hours and keep the produce in safe places.
- ♦ In **Chhattisgarh**, provide **light and frequent irrigation** in standing crops such as **wheat, chickpea, lentil and mustard** to minimize heat stress and maintain adequate soil moisture.
- ♦ In **Arunachal Pradesh**, provide **regular irrigation to winter vegetables (cabbage, cauliflower, tomato)** during early morning or evening hours. Undertake **harvesting of matured mustard crops** and keep harvested produce in safe places.
- ♦ In **Assam**, maintain **optimum water level (2–5 cm) in Boro rice fields**.
- ♦ In **Andhra Pradesh**, apply light irrigation in *rabi* maize, groundnut, and pulses to avoid moisture stress. Apply mulching or light watering to conserve soil moisture in standing *rabi* crops under dry and sunny conditions. Maintain a standing water depth of about 5 cm in the main field during the tillering stage in rice.
- ♦ Take appropriate action for conservation of soil moisture through mulching, proper field bunding, and avoiding unnecessary intercultivation.

#### Livestock / Poultry

- ♦ Provide clean, hygienic and plenty of drinking water to animals.
- ♦ To reduce the effect of heat wave/high temperature, cover the roof of poultry sheds with grass.

## LEGENDS

- 1 अंडमान और निकोबार द्वीप समुद्र
- 2 अरुणाचल प्रदेश
- 3 असम और मेघालय
- 4 नागालैंड मनीपुर मीजोरम और त्रिपुरा
- 5 उप हिमालय पश्चिम बंगाल एवं सिक्किम
- 6 पश्चिम गंगेय बंगाल
- 7 ओडिसा
- 8 झारखंड
- 9 बिहार
- 10 पूर्वी उत्तर प्रदेश
- 11 पश्चिम उत्तर प्रदेश
- 12 उत्तराखंड
- 13 हरियाणा चंडिगढ़ एवं दिल्ली
- 14 पंजाब
- 15 हिमाचल प्रदेश
- 16 जम्मू एवं कश्मीर एवं लद्दाख
- 17 पश्चिम राजस्थान
- 18 पूर्वी राजस्थान
- 19 पश्चिम मध्य प्रदेश
- 20 पूर्वी मध्य प्रदेश
- 21 गुजरात क्षेत्र
- 22 सौराष्ट्र एवं कच्छ
- 23 कोंकण एवं गोवा
- 24 मध्य महाराष्ट्र
- 25 मराठावाड़ा
- 26 विदर्भ
- 27 छत्तीसगढ़
- 28 तटीय आंध्र प्रदेश एवं यनम
- 29 तेलंगाना
- 30 रायलसीमा
- 31 तमिलनाडु, पुदुचेरी एवं कराईकल
- 32 तटिय कर्नाटक
- 33 आंतरिक उत्तरी कर्नाटक
- 34 आंतरिक दक्षिणी कर्नाटक
- 35 केरल एवं माहे
- 36 लक्षद्वीप



1. Andaman & Nicobar Islands
2. Arunachal Pradesh
3. Assam & Meghalaya
4. Nagaland, Manipur, Mizoram & Tripura
5. Sub-Himalayan West Bengal & Sikkim
6. Gangetic West Bengal
7. Orissa
8. Jharkhand
9. Bihar
10. East Uttar Pradesh
11. West Uttar Pradesh
12. Uttarakhand
13. Haryana, Chd & Delhi
14. Punjab
15. Himachal Pradesh
16. Jammu & Kashmir and Ladakh
17. West Rajasthan
18. East Rajasthan
19. West Madhya Pradesh
20. East Madhya Pradesh
21. Gujarat
22. Saurashtra
23. Konkan & Goa
24. Madhya Maharashtra
25. Marathawada
26. Vidharbha
27. Chhattisgarh
28. Coastal Andhra Pradesh & Yanam
29. Telangana
30. Rayalaseema
31. Tamilnadu, Puducherry & Karaikal
32. Coastal Karnataka
33. North Interior Karnataka
34. South Interior Karnataka
35. Kerala & Mahe
36. Lakshadweep

## SPATIAL DISTRIBUTION (% of Stations reporting)

% Stations	Category	% Stations	Category
76-100	Widespread (WS/ Most Places)	26-50	Scattered (SCT/ A Few Places)
51-75	Fairly Widespread (FWS/ Many Places)	1-25	Isolated (ISOL)

### Subdivision Colour

- NO WARNING
- WATCH (BE UPDATED)
- ALERT (BE PREPARED TO TAKE ACTION)
- WARNING (TAKE ACTION)

### Probabilistic Forecast

Terms	Probability of Occurrence (%)
Unlikely	< 25
Likely	25 - 50
Very Likely	50 - 75
Most Likely	> 75

- Heavy Rain
- Thunderstorm & Lightning
- Strong surface winds
- Cold Wave
- Hot & Humid
- Very Heavy Rain
- Hailstrom
- Heat Wave
- Cold Day
- Extremely Heavy Rain
- Dust Storm
- Hot Day
- Ground Frost
- Heavy Snow
- Dust Raising Winds
- Warm Night
- FOG

\*Red color warning does not mean "Red Alert" Red color warning means "Take Action"

Forecast and warning for any day is valid from 0830 hours IST of day till 0830 hours IST of next day

For more details kindly visit <https://mausam.imd.gov.in> or contact 011-2434-4599

(Service to the nation since 1875)

## LEGENDS

### WARNING

WARNING (TAKE ACTION)
ALERT ( BE PREPARED)
WATCH (BE UPDATED)
NO WARNING ( NO ACTION)

### Probabilistic Forecast

Terms	Probability of Occurrence (%)
Unlikely	< 25
Likely	25 - 50
Very Likely	50 - 75
Most Likely	> 75



Heavy: 64.5 to 115.5 mm/cm \*  
Very Heavy: 115.6 to 204.4 mm/cm\*  
Extremely Heavy: > 204.4 mm/cm \*



When maximum temperature of a station reaches  $\geq 40^\circ\text{C}$  for plains and  $\geq 30^\circ\text{C}$  for hilly regions  
(a) Based on Departure from normal

Heat Wave: Maximum Temperature Departure from normal  $4.5^\circ\text{C}$  to  $6.4^\circ\text{C}$ .  
Severe Heat Wave: Maximum Temperature Departure from normal  $\geq 6.5^\circ\text{C}$

(b). Based on Actual maximum temperature

Heat Wave: When actual maximum temperature  $\geq 45^\circ\text{C}$ .  
Severe Heat Wave: When actual maximum temperature  $\geq 47^\circ\text{C}$

(c). Criteria for heat wave for coastal stations

When maximum temperature departure is  $> 4.5^\circ\text{C}$  from normal. Heat Wave may be described provided maximum temperature  $\geq 37^\circ\text{C}$



When maximum temperature remains  $40^\circ\text{C}$

Warm Night: When minimum temperature departure  $4.5^\circ\text{C}$  to  $6.4^\circ\text{C}$ .  
Severe Warm Night: When minimum temperature departure  $> 6.4^\circ\text{C}$ .



When minimum temperature of a station  $\leq 10^\circ\text{C}$  for plains and  $\leq 0^\circ\text{C}$  for hilly regions.  
(a). Based on departure

Cold Wave: Minimum Temperature Departure from normal  $-4.5^\circ\text{C}$  to  $-6.4^\circ\text{C}$ .  
Severe Cold Wave: Minimum Temperature Departure from normal  $\leq -6.5^\circ\text{C}$

(b) Based on actual Minimum Temperature (for Plains only)

Cold Wave : When Minimum Temperature is  $\leq 4.0^\circ\text{C}$   
Severe Cold Wave: When Minimum Temperature is  $\leq 2.0^\circ\text{C}$

(c) For Coastal Stations

When Minimum Temperature departure is  $\leq -4.5^\circ\text{C}$  & actual Minimum Temperature is  $\leq 15^\circ\text{C}$



When minimum temperature of a station  $\leq 10^\circ\text{C}$  for plains and  $\leq 0^\circ\text{C}$  for hilly regions  
Based on departure

Cold Day: Maximum Temperature Departure from normal  $-4.5^\circ\text{C}$  to  $-6.4^\circ\text{C}$ .  
Severe Cold Day: Maximum Temperature Departure from normal  $\leq -6.5^\circ\text{C}$



Phenomenon of small droplets suspended in air and the horizontal visibility  $< 1\text{km}$

Moderate Fog: When the visibility between 500-200 metres  
Dense Fog: when the visibility between 50- 200 metres  
Very Dense Fog: when the visibility  $< 50$  metres



Sudden electrical discharges manifested by a flash of light (Lightning) and a sharp rumbling sound (thunder)



An ensemble of particles of dust or sand energetically lifted to great heights by a strong and turbulent wind.



Ice deposits on ground

Air temperature  $\leq 4^\circ\text{C}$  ( over Plains)



A strong wind that rises suddenly, lasts for atleast 1 minute.

Moderate: Wind speed 52-61 kmph  
Severe: Wind speed 62-87 kmph  
Very Severe: Wind speed  $> 87$  kmph



Effect of various waves in the sea over specific area

Rough to very rough: Wind speed 41-62 kmph (22-33 knots) & Wave height 2.5-6 metre  
High to very high: Wind speed 63-117 kmph ( 34-63 knots) & Wave height 6-14 metre  
Phenomenal: Wind speed  $> 117$  kmph ( $> 63$  knots) & Wave height  $> 14$  metre



Cyclonic Storm: Wind speed 62-87 kmph (34-47 knots)

Severe Cyclonic Storm: Wind speed 88-117 kmph (48-63 knots)

Very Severe Cyclonic Storm: Wind speed 118-165 kmph (64 - 89 knots)

Extremely Severe Cyclonic Storm: Wind speed 166-220 kmph (90 -119 knots)

Super Cyclone Storm: Wind speed  $> 220$  kmph ( $> 119$  knots)