

2025-09-10

Time of Issue: 13:10:00 hours IST  
(Mid-Day)

## ALL INDIA WEATHER SUMMARY AND FORECAST BULLETIN

### Significant Weather Features

#### Weather forecast and warning:

##### Northeast India:

Light/moderate rain/thunderstorm at many/some places with isolated heavy rainfall likely over Arunachal Pradesh, Assam & Meghalaya and Nagaland, Manipur, Mizoram & Tripura during 10th-16th September with very heavy falls over Arunachal Pradesh and Nagaland, Manipur, Mizoram & Tripura during 12th-16th; Assam & Meghalaya during 13th-16th September.

##### East & Central India:

Light to moderate rain/thunderstorm at many/some places with isolated heavy rainfall likely over West Madhya Pradesh on 10th; Andaman & Nicobar Islands & East Madhya Pradesh on 10th & 11th; Chhattisgarh & Bihar during 10th-14th; Sub-Himalayan West Bengal & Sikkim during 10th-15th; Vidarbha during 12th-14th; Odisha on 11th & 12th September with isolated very heavy falls over Sub-Himalayan West Bengal & Sikkim on 10th & 13th; Bihar, Jharkhand and Odisha on 11th September.

##### Northwest India:

Light to moderate rain/thunderstorm at some/isolated places with isolated heavy rainfall likely over East Uttar Pradesh on 11th, 12th, 15th & 16th; West Uttar Pradesh on 12th; Jammu-Kashmir on 13th; Himachal Pradesh on 13th & 14th; Uttarakhand during 12th-15th September.

##### West India:

Light to moderate rain/thunderstorm at some/isolated places with isolated heavy rainfall likely over Madhya Maharashtra during 12th-16th; Marathwada during 12th-14th; Konkan & Goa during 13th-16th; Gujarat Region during 14th-16th September with very heavy falls over Marathwada on 13th; Konkan & Goa, Madhya Maharashtra on 14th September.

##### South Peninsular India:

Light to moderate rain/thunderstorm & gusty winds (speed 30-40 kmph) at many/some places with isolated heavy rainfall likely over Tamil Nadu on 10th & 11th; Kerala & Mahe, South Interior Karnataka on 10th; Coastal Andhra Pradesh & Yanam & Telangana during 10th-13th; North Interior Karnataka during 10th-14th September. Strong surface winds (speed reaching 30-40 kmph) very likely over Coastal Andhra Pradesh & Yanam and Rayalaseema during next 5 days.

\*Red color warning does not mean "Red Alert" Red color warning means "Take Action"

Forecast and warning for any day is valid from 0830 hours IST of day till 0830 hours IST of next day

For more details kindly visit <https://mausam.imd.gov.in> or contact 011-2434-4599

(Service to the nation since 1875)

#### Main Weather Observations:

❖ **Rainfall distribution**(from 0830 hours IST of yesterday to 0830 hours IST of today): At **most places** over Andaman & Nicobar Islands, Sub-Himalayan West Bengal & Sikkim, Lakshadweep; at **many places** over Assam & Meghalaya, Nagaland, Manipur, Mizoram & Tripura, Vidarbha; **at a few places** over Arunachal Pradesh, Jharkhand, East Madhya Pradesh, Jammu-Kashmir-Ladakh-Gilgit-Baltistan-Muzaffarabad, Himachal Pradesh, Chhattisgarh, Kerala & Mahe; **at isolated places** over Gangetic West Bengal, Odisha, Bihar, Uttarakhand, Punjab, Haryana-Chandigarh-Delhi, Uttar Pradesh, Rajasthan, West Madhya Pradesh, Konkan & Goa, Madhya Maharashtra, Marathwada, Gujarat state, Tamil Nadu, Puducherry & Karaikal, Karnataka, Coastal Andhra Pradesh & Yanam, Rayalaseema, Telangana.

❖ **Significant rainfall recorded(in cm)** (from 0830 hours IST of yesterday to 0830 hours IST of today): **Sub-Himalayan West Bengal & Sikkim:** Gyalasing (dist Gyalshing) 16, Sevoke (dist Darjeeling) 8, Damthang (dist Namchi) 7; **Bihar:** Bettiah (dist West Champaran) 13, Narpatganj (dist Araria) 7, Pratapganj (dist Supaul) 7, Nirmali (dist Supaul) 7; **Rayalaseema:** Kuppam (dist Chittoor) 9; **Jharkhand:** Putki Dvc (dist Dhanbad) 9, Jamtara (dist Jamtara) 8, Dhanbad (dist Dhanbad) 7; **West Madhya Pradesh:** Pachmarhi (dist Narmadapuram) 9, Bhopal Arera Hills (dist Bhopal) 7; **Coastal Andhra Pradesh:** Visakhapatnam (dist Vishakhapatnam) 8; **Uttarakhand:** Haripur (dist Dehradun) 8; **Chhattisgarh:** Durg (dist Durg) 8; **Tamil Nadu:** Dindigul (dist Dindigul) 8, Thuraiyur ARG (dist Thiruchirappalli), Alangayam (dist Tirupathur) 7 each; **Lakshadweep:** Agathi (dist Lakshadweep); **Arunachal Pradesh:** Dirang Arg (dist West Kameng) 7; **Assam :** A P Ghat (dist Cachar) 9, Barpeta (dist Barpeta) 8, Beky Rly.bridge (dist Barpeta) 7, Beki Mathungari (dist Barpeta) 7;

**Heavy rainfall** (from 0830 hours IST of yesterday to 0830 hours IST of today): **Very heavy rainfall** recorded at isolated places over Sub-Himalayan West Bengal & Sikkim and Bihar; **Heavy rainfall** at isolated places over Uttarakhand, Jharkhand, West Madhya Pradesh, Chhattisgarh, Arunachal Pradesh, Assam & Meghalaya, Lakshadweep, Coastal Andhra Pradesh, Rayalaseema and Tamil Nadu.

❖ **Minimum Temperature Departures (as on 10-09-2025):** **markedly above normal(> 5.1°C)** at many places over Jammu-Kashmir-Ladakh-Gilgit-Baltistan-Muzaffarabad; at isolated places over Assam & Meghalaya, Bihar, East Uttar Pradesh, West Uttar Pradesh, Himachal Pradesh and West Madhya Pradesh. **appreciably above normal(3.1°C to 5.0°C)** at few places over Sub Himalayan West Bengal & Sikkim and East Madhya Pradesh; at isolated places over Odisha, Uttarakhand, Konkan & Goa, Coastal Andhra Pradesh & Yanam, Tamil Nadu, Puducherry & Karaikal and South Interior Karnataka. **above normal(1.6°C to 3.0°C)** at many places over Punjab, Rayalaseema and Kerala & Mahe; at few places over Nagaland, Manipur, Mizoram & Tripura, Gangetic West Bengal, Haryana-Chandigarh-Delhi, West Rajasthan, Saurashtra & Kutch and Vidarbha; at isolated places over Andaman & Nicobar Islands, Jharkhand, Gujarat Region, Madhya Maharashtra, Marathwada, Chhattisgarh, Telangana and North Interior Karnataka. **near normal(-1.5°C to 1.5°C)** at many places over Lakshadweep; at most places over Arunachal Pradesh, East Rajasthan and Coastal Karnataka. **The lowest minimum temperature** of 19.0°C is reported at **Dharwad** (North Interior Karnataka) over the Plains of India.

❖ **Maximum Temperature Departures (as on 09-09-2025):** **markedly above normal(> 5.1°C)** at isolated places over Odisha. **appreciably above normal(3.1°C to 5.0°C)** at few places over Arunachal Pradesh, Gangetic West Bengal, Uttarakhand, Coastal Andhra Pradesh & Yanam and Rayalaseema; at isolated places over East Madhya Pradesh, Madhya Maharashtra, Vidarbha, Chhattisgarh and North Interior Karnataka. **above normal(1.6°C to 3.0°C)** at many places over Sub Himalayan West Bengal & Sikkim; at most places over Jharkhand; at few places over Punjab, Marathwada, Telangana, Kerala & Mahe and Lakshadweep; at isolated places over Andaman & Nicobar Islands, Assam & Meghalaya, Nagaland, Manipur, Mizoram & Tripura, East Uttar Pradesh, West Uttar Pradesh, Haryana-Chandigarh-Delhi, Himachal Pradesh and Tamil Nadu, Puducherry & Karaikal. **near normal(-1.5°C to 1.5°C)** at many places over Saurashtra & Kutch and South Interior Karnataka; at most places over Bihar, East Rajasthan, West Madhya Pradesh, Gujarat Region, Konkan & Goa and Coastal Karnataka; at few places over Jammu-Kashmir-Ladakh-Gilgit-Baltistan-Muzaffarabad. **The highest maximum temperature** of 39.2°C is reported at KAVALI (ANDHRA PRADESH).

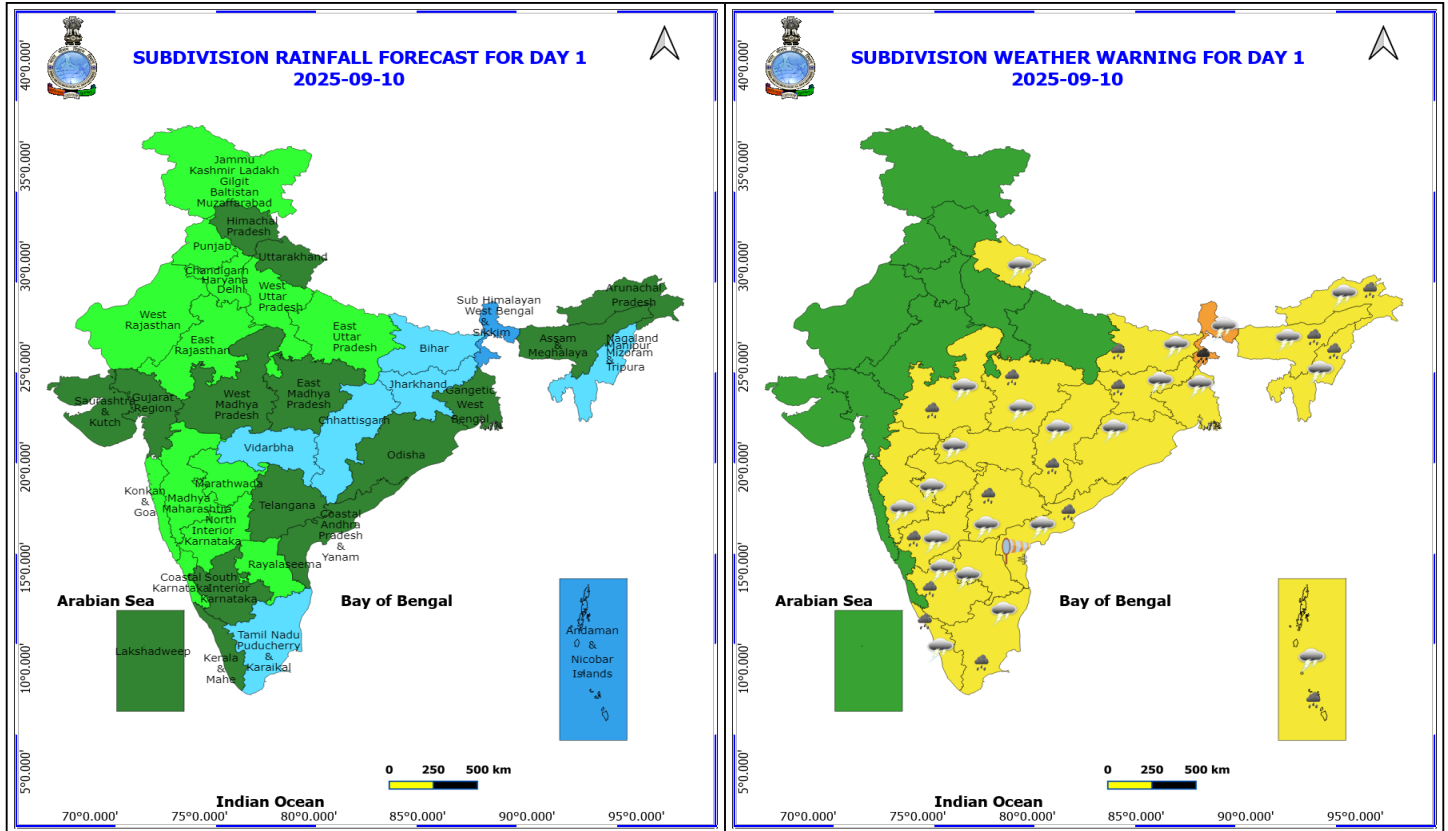


#### Meteorological Analysis (Based on 0830 hours IST)

- The **Depression** over the northeast Arabian Sea & adjoining south Pakistan moved nearly westwards with the speed of 20 kmph during past 6 hours, lay centred at 0830 hrs IST of today, the 10th September, 2025, over the same region near latitude 24.8°N and longitude 65.5°E, 170 km west of Karachi (Pakistan), 300 km west-southwest of Hyderabad (Pakistan), and 390 km west-northwest of Naliya (Gujarat). It is very likely to continue to move nearly westwards and weaken gradually into a **well-marked low pressure** area during next 06 hours.
- The **monsoon trough** at mean sea level now passes through depression over northeast Arabian Sea & adjoining south Pakistan, Bhuj, Banasthali, Agra, Barabanki, Varanasi, Daltonganj, Ranchi, Digha and thence southeastwards to eastcentral Bay of Bengal.
- The **upper air cyclonic circulation** over South Odisha and north Coastal Andhra Pradesh persists and now extends upto 3.1 km above mean sea level.
- The **upper air cyclonic circulation** over Sikkim & neighbourhood at 3.1 km above mean sea level persists.
- The **trough** from South Interior Karnataka to Gulf of Mannar across Tamil Nadu persists and extends upto 1.5 km above mean sea level.
- The **trough** in westerlies at 0.9 km above mean sea level runs roughly along at Long. 86°E to the north of Lat. 22°N persists.
- The **upper air cyclonic circulation** over Gulf of Mannar & neighbourhood at 1.5 km above mean sea level has become less marked.

#### Weather Outlook for subsequent 3 days

- Fairly widespread to widespread rainfall likely over Northeast India, East India and Central India.
- Isolated to scattered rainfall likely over the Northwest India, west India and South peninsular India.



## 10 September (Day 1)

- ❖ **Heavy to Very Heavy Rainfall** very likely at isolated places over Sub Himalayan West Bengal & Sikkim.
- ❖ **Heavy Rainfall** very likely at isolated places over Andaman & Nicobar Islands, Arunachal Pradesh, Assam & Meghalaya, Bihar, Chhattisgarh, Coastal Andhra Pradesh, Interior Karnataka, Jharkhand, Kerala & Mahe, Madhya Pradesh, Nagaland, Manipur, Mizoram and Tripura, Tamil Nadu Puducherry & Karaikal and Telangana.
- ❖ **Thunderstorm accompanied with lightning & gusty winds(30-40kmph)** very likely at isolated places over Andaman & Nicobar Islands, Bihar, Interior Karnataka, Jharkhand, Kerala & Mahe, Odisha, Tamil Nadu Puducherry & Karaikal, Telangana and West Bengal & Sikkim.
- ❖ **Thunderstorm accompanied with Lightning** very likely at isolated places over Andhra Pradesh, Arunachal Pradesh, Assam & Meghalaya, Chhattisgarh, Madhya Pradesh, Maharashtra, Nagaland, Manipur, Mizoram and Tripura and Uttarakhand.
- ❖ **Strong Surface Winds** very likely at isolated places over Coastal Andhra Pradesh.

Squally wind with speed reaching 45 kmph to 55 kmph gusting to 65 kmph is likely to prevail along and off Somalia and Oman coasts, some parts of westcentral & southwest Arabian sea.

Squally weather with wind speed reaching 40 - 50 kmph gusting to 60 kmph likely to prevail along and off south Sri Lanka coast & adjoining southwest Bay of Bengal, over Gulf of Mannar & adjoining Comorin area.

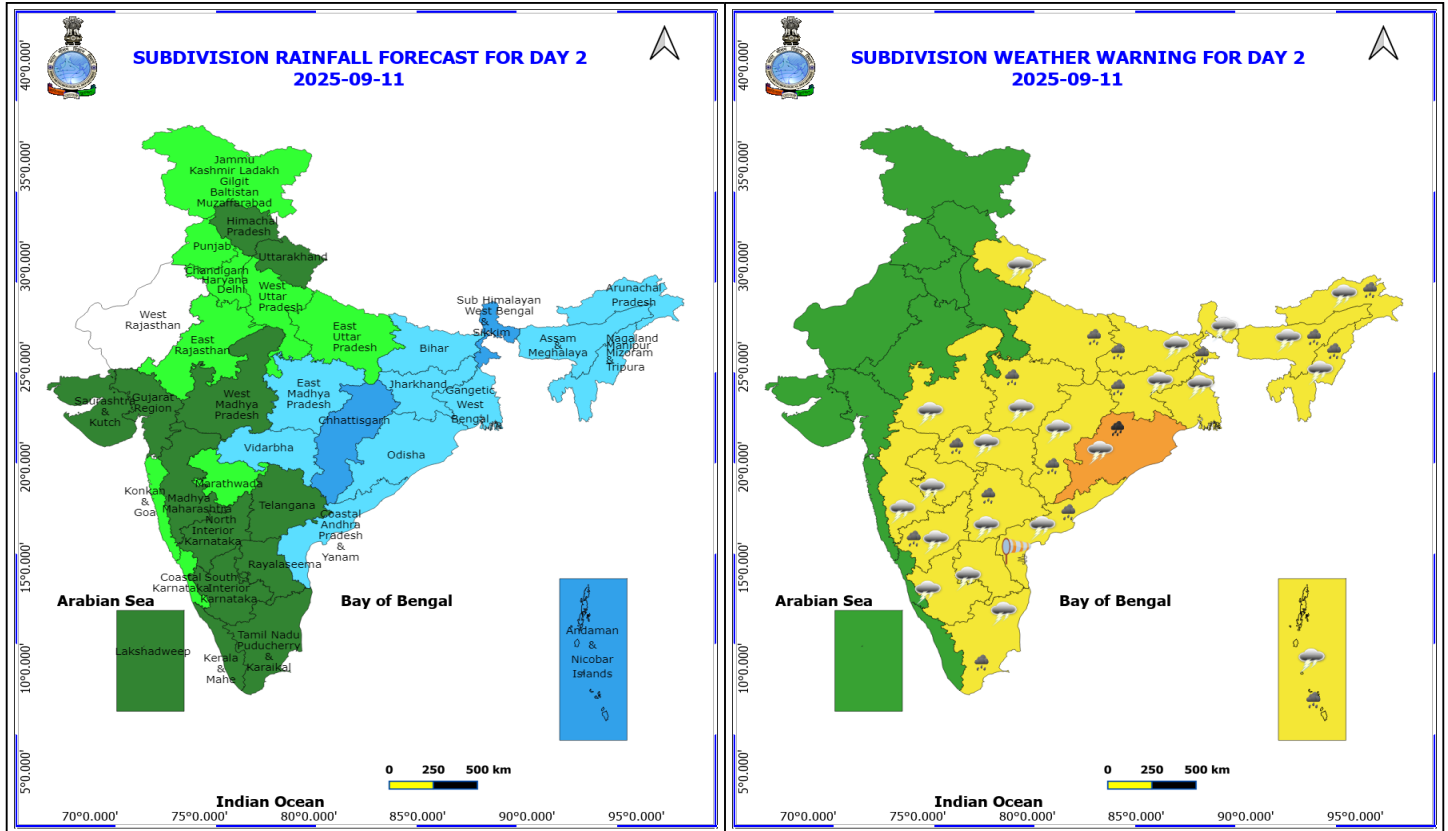
Squally weather with wind speed reaching 45 - 55 kmph gusting to 65 kmph likely to prevail along and off Pakistan & north Gujarat coasts, some parts of northeast & adjoining northwest Arabian sea

**\*Red color warning does not mean "Red Alert" Red color warning means "Take Action"**

Forecast and warning for any day is valid from 0830 hours IST of day till 0830 hours IST of next day

For more details kindly visit <https://mausam.imd.gov.in> or contact 011-2434-4599

(Service to the nation since 1875)



## 11 September (Day 2)

- ❖ **Heavy to Very Heavy Rainfall** very likely at isolated places over Odisha.
- ❖ **Heavy Rainfall** very likely at isolated places over Andaman & Nicobar Islands, Arunachal Pradesh, Assam & Meghalaya, Bihar, Chhattisgarh, Coastal Andhra Pradesh, East Madhya Pradesh, East Uttar Pradesh, Nagaland, Manipur, Mizoram and Tripura, North Interior Karnataka, Sub Himalayan West Bengal & Sikkim, Tamil Nadu Puducherry & Karaikal, Telangana and Vidarbha.
- ❖ **Thunderstorm accompanied with lightning & gusty winds(30-40kmph)** very likely at isolated places over Andaman & Nicobar Islands, Bihar, Interior Karnataka, Jharkhand, Odisha, Tamil Nadu Puducherry & Karaikal, Telangana and West Bengal & Sikkim.
- ❖ **Thunderstorm accompanied with Lightning** very likely at isolated places over Andhra Pradesh, Arunachal Pradesh, Assam & Meghalaya, Chhattisgarh, Madhya Pradesh, Maharashtra, Nagaland, Manipur, Mizoram and Tripura and Uttarakhand.
- ❖ **Strong Surface Winds** very likely at isolated places over Coastal Andhra Pradesh.

Squally wind with speed reaching 45 kmph to 55 kmph gusting to 65 kmph is likely to prevail along and off Somalia coasts, some parts of southwest & westcentral Arabian Sea.

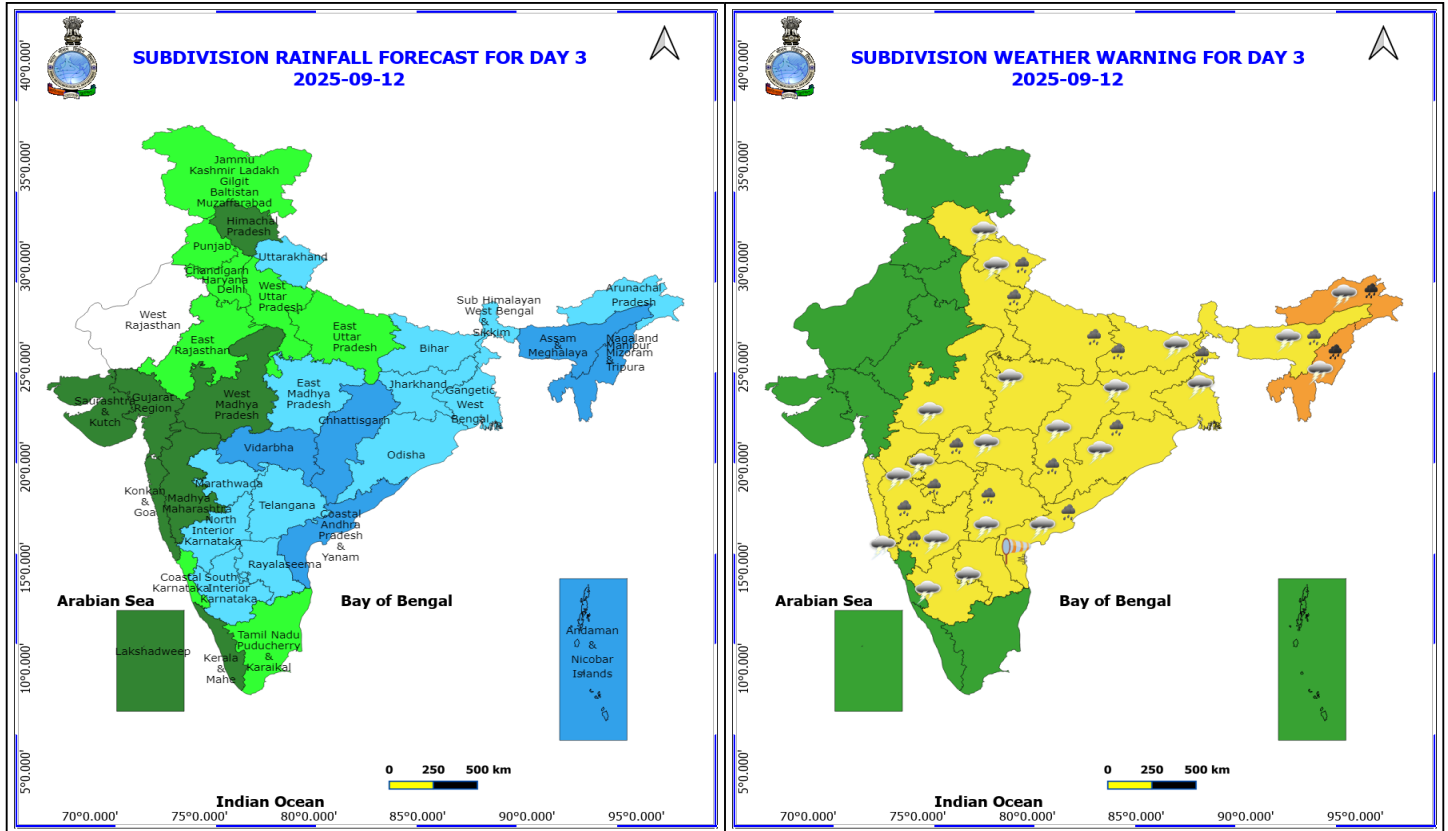
Squally weather with wind speed reaching 40 - 50 kmph gusting to 60 kmph likely to prevail over Gulf of Mannar & adjoining Comorin area; along and off south Sri Lanka coast, over some parts of southwest Bay of Bengal.

**\*Red color warning does not mean "Red Alert" Red color warning means "Take Action"**

Forecast and warning for any day is valid from 0830 hours IST of day till 0830 hours IST of next day

For more details kindly visit <https://mausam.imd.gov.in> or contact 011-2434-4599

(Service to the nation since 1875)



## 12 September (Day 3)

- ❖ **Heavy to Very Heavy Rainfall** very likely at isolated places over Arunachal Pradesh and Nagaland, Manipur, Mizoram and Tripura.
- ❖ **Heavy Rainfall** very likely at isolated places over Assam & Meghalaya, Bihar, Chhattisgarh, Coastal Andhra Pradesh, Maharashtra, North Interior Karnataka, Odisha, Sub Himalayan West Bengal & Sikkim, Telangana, Uttar Pradesh and Uttarakhand.
- ❖ **Thunderstorm accompanied with lightning & gusty winds(30-40kmph)** very likely at isolated places over Bihar, Gangetic West Bengal, Himachal Pradesh, Interior Karnataka, Jharkhand, Odisha and Telangana.
- ❖ **Thunderstorm accompanied with Lightning** very likely at isolated places over Andhra Pradesh, Arunachal Pradesh, Assam & Meghalaya, Chhattisgarh, Konkan & Goa, Madhya Pradesh, Maharashtra, Nagaland, Manipur, Mizoram and Tripura and Uttarakhand.
- ❖ **Strong Surface Winds** very likely at isolated places over Coastal Andhra Pradesh.

Squally wind with speed reaching 45 kmph to 55 kmph gusting to 65 kmph is likely to prevail along and off Somalia and Oman coasts, some parts of southwest & westcentral Arabian Sea.

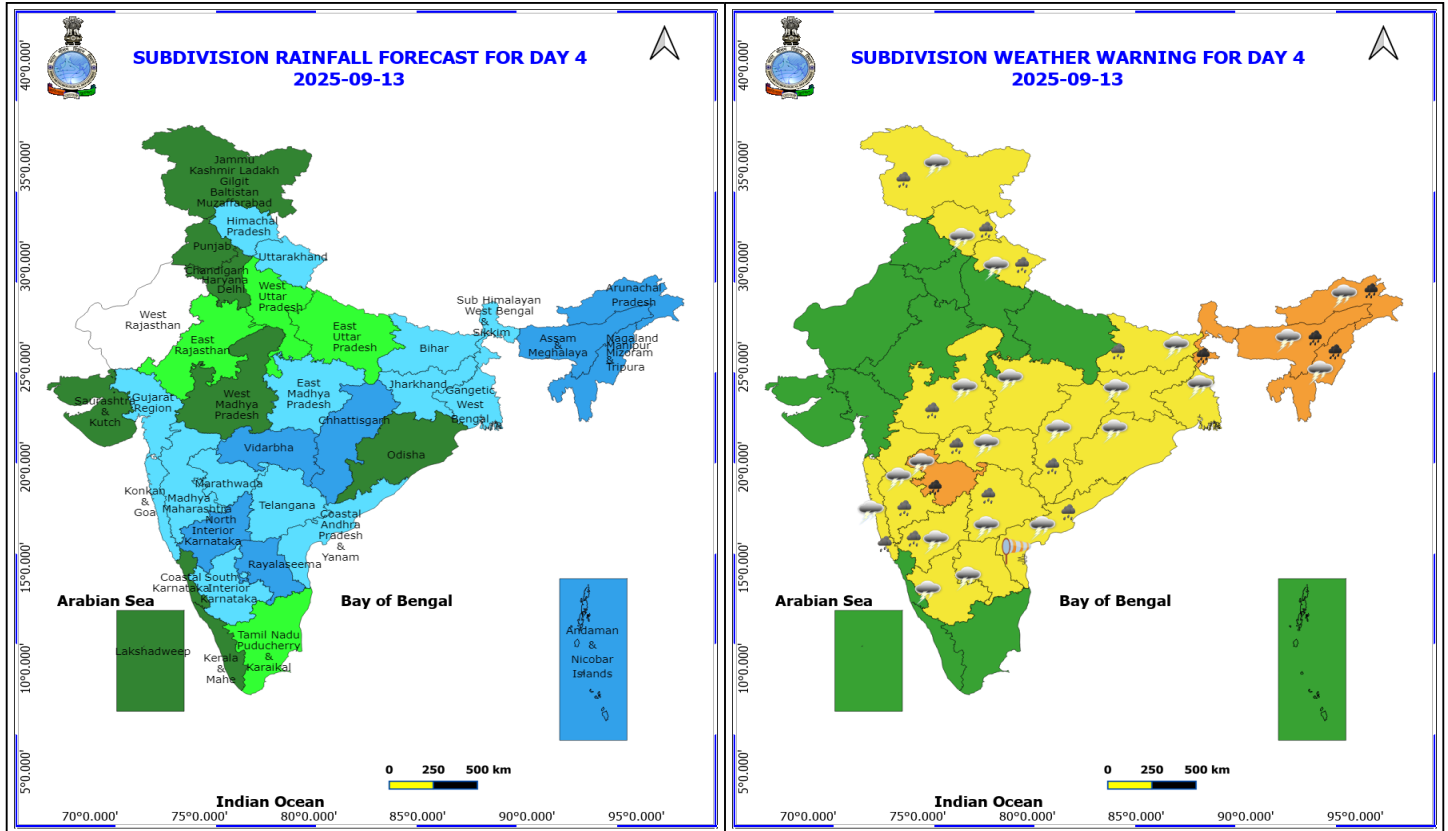
Squally weather with wind speed reaching 40 - 50 kmph gusting to 60 kmph likely to prevail over Gulf of Mannar & adjoining Comorin area; along and off south Sri Lanka coast, over some parts of southwest Bay of Bengal.

**\*Red color warning does not mean "Red Alert" Red color warning means "Take Action"**

Forecast and warning for any day is valid from 0830 hours IST of day till 0830 hours IST of next day

For more details kindly visit <https://mausam.imd.gov.in> or contact 011-2434-4599

(Service to the nation since 1875)



### 13 September (Day 4)

- ❖ **Heavy to Very Heavy Rainfall** likely at isolated places over Arunachal Pradesh, Assam & Meghalaya, Marathwada, Nagaland, Manipur, Mizoram and Tripura and Sub Himalayan West Bengal & Sikkim.
- ❖ **Heavy Rainfall** likely at isolated places over Bihar, Chhattisgarh, Coastal Andhra Pradesh, Himachal Pradesh, Jammu-Kashmir-Ladakh-Gilgit-Baltistan-Muzaffarabad, Konkan & Goa, Madhya Maharashtra, North Interior Karnataka, Telangana, Uttarakhand, Vidarbha and West Madhya Pradesh.
- ❖ **Thunderstorm accompanied with lightning & gusty winds(30-40kmph)** likely at isolated places over Bihar, Gangetic West Bengal, Himachal Pradesh, Interior Karnataka, Jammu-Kashmir-Ladakh-Gilgit-Baltistan-Muzaffarabad, Jharkhand, Odisha and Telangana.
- ❖ **Thunderstorm accompanied with Lightning** likely at isolated places over Andhra Pradesh, Arunachal Pradesh, Assam & Meghalaya, Chhattisgarh, Konkan & Goa, Madhya Pradesh, Maharashtra, Nagaland, Manipur, Mizoram and Tripura and Uttarakhand.
- ❖ **Strong Surface Winds** likely at isolated places over Coastal Andhra Pradesh.

Squally wind with speed reaching 45 kmph to 55 kmph gusting to 65 kmph is likely to prevail along and off Somalia and Oman coasts, some parts of southwest & westcentral Arabian Sea.

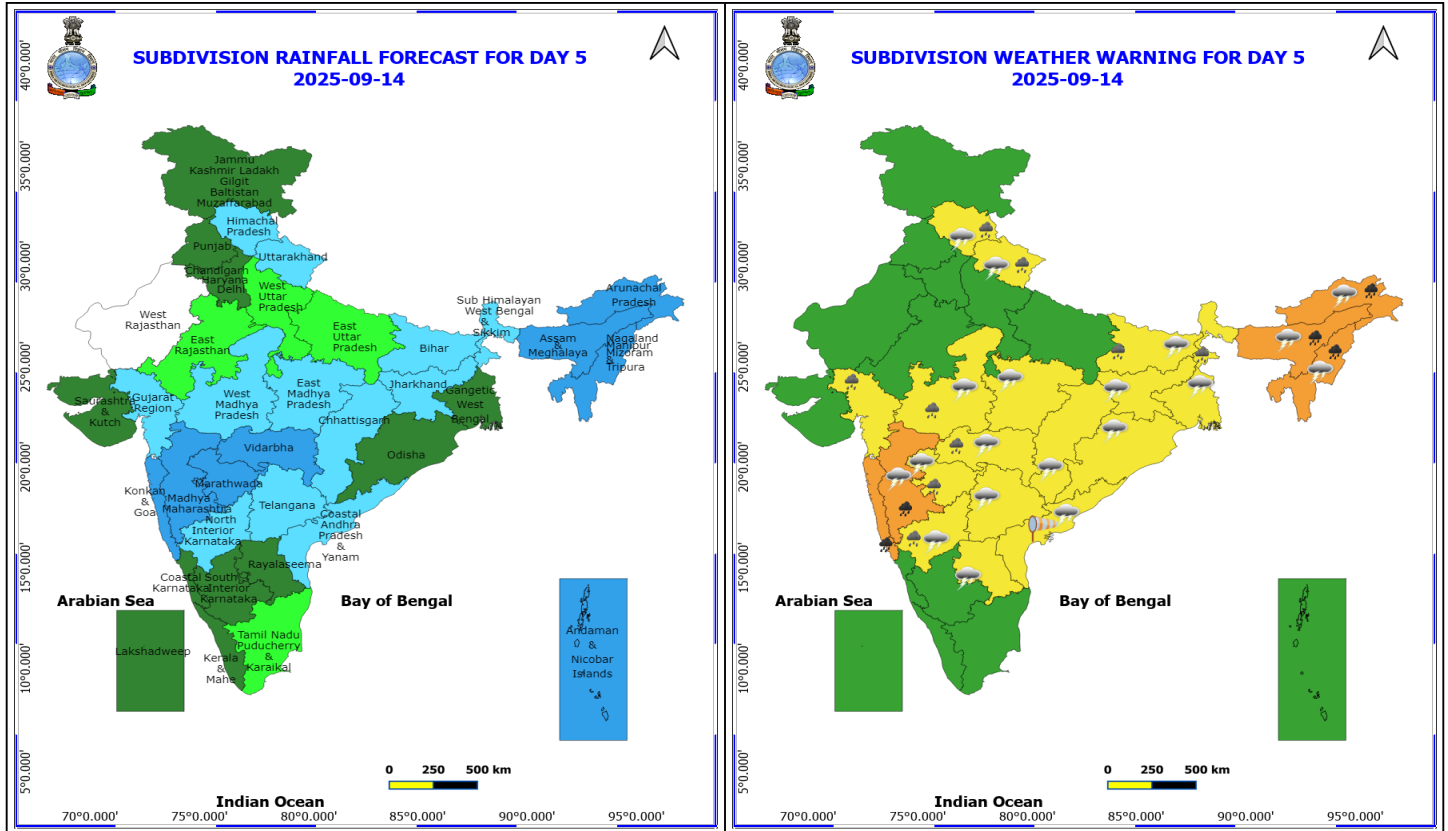
Squally weather with wind speed reaching 40 - 50 kmph gusting to 60 kmph likely to prevail over Gulf of Mannar & adjoining Comorin area; along and off south Sri Lanka coast & adjoining some parts of southwest Bay of Bengal.

**\*Red color warning does not mean "Red Alert" Red color warning means "Take Action"**

Forecast and warning for any day is valid from 0830 hours IST of day till 0830 hours IST of next day

For more details kindly visit <https://mausam.imd.gov.in> or contact 011-2434-4599

(Service to the nation since 1875)



#### 14 September (Day 5)

- ❖ **Heavy to Very Heavy Rainfall** likely at isolated places over Arunachal Pradesh, Assam & Meghalaya, Konkan & Goa, Madhya Maharashtra and Nagaland, Manipur, Mizoram and Tripura.
- ❖ **Heavy Rainfall** likely at isolated places over Bihar, Gujarat Region, Himachal Pradesh, Marathwada, North Interior Karnataka, Sub Himalayan West Bengal & Sikkim, Uttarakhand, Vidarbha and West Madhya Pradesh.
- ❖ **Thunderstorm accompanied with lightning & gusty winds(30-40kmph)** likely at isolated places over Bihar, Gangetic West Bengal, Himachal Pradesh, Jharkhand, North Interior Karnataka, Odisha and Telangana.
- ❖ **Thunderstorm accompanied with Lightning** likely at isolated places over Andhra Pradesh, Arunachal Pradesh, Assam & Meghalaya, Chhattisgarh, Madhya Pradesh, Maharashtra, Nagaland, Manipur, Mizoram and Tripura and Uttarakhand.
- ❖ **Strong Surface Winds** likely at isolated places over Coastal Andhra Pradesh.

Squally wind with speed reaching 45 kmph to 55 kmph gusting to 65 kmph is likely to prevail along and off Somalia and Oman coasts, some parts of southwest & westcentral Arabian Sea.

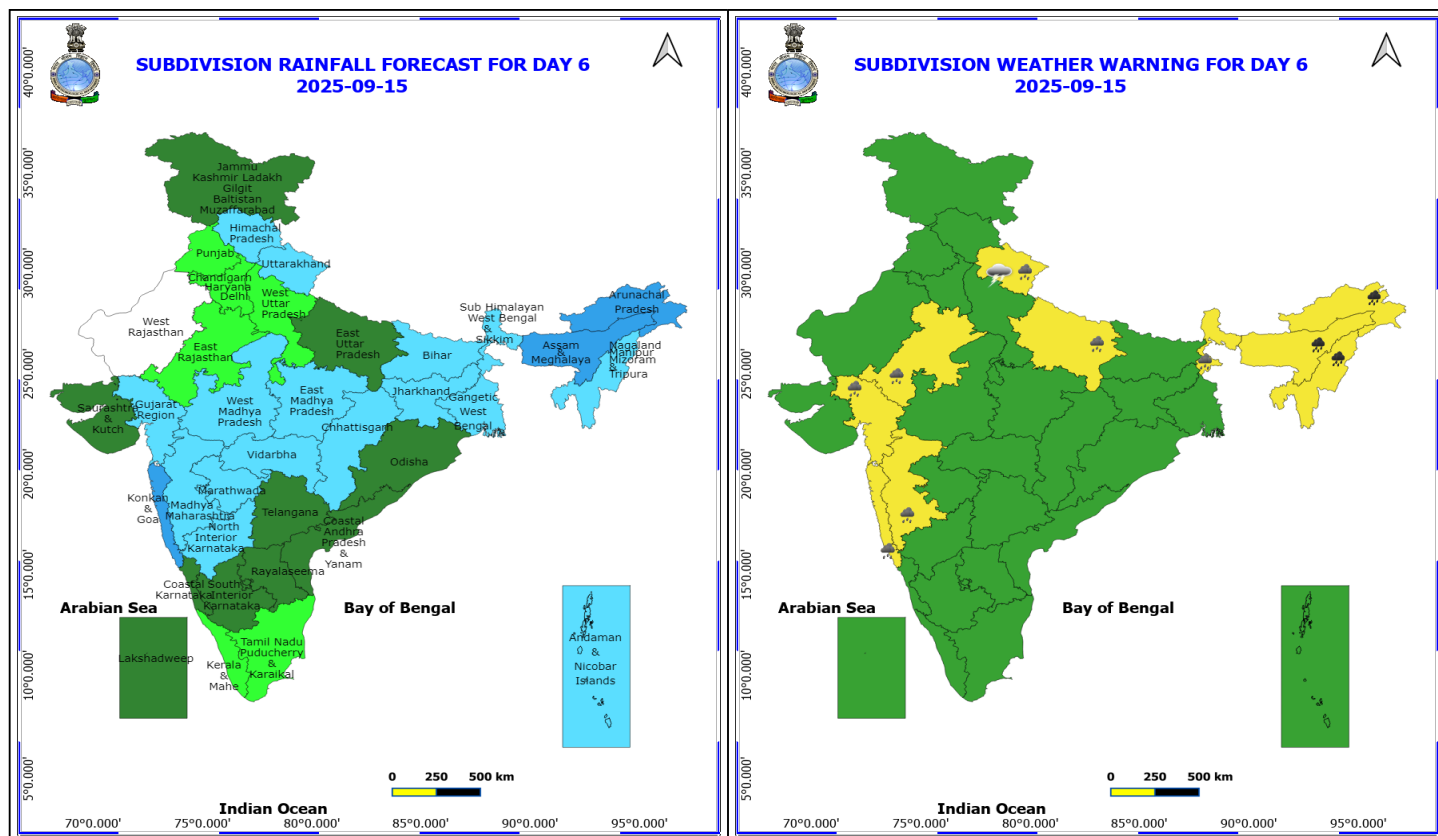
Squally weather with wind speed reaching 40 - 50 kmph gusting to 60 kmph likely to prevail over Gulf of Mannar & adjoining Comorin area; along and off south Sri Lanka coast & adjoining some parts of southwest Bay of Bengal, along and off Tamil Nadu, south Andhra Pradesh coasts.

**\*Red color warning does not mean "Red Alert" Red color warning means "Take Action"**

Forecast and warning for any day is valid from 0830 hours IST of day till 0830 hours IST of next day

For more details kindly visit <https://mausam.imd.gov.in> or contact 011-2434-4599

(Service to the nation since 1875)



### 15 September (Day 6)

- ❖ **Heavy to Very Heavy Rainfall** likely at isolated places over Arunachal Pradesh, Assam & Meghalaya and Nagaland, Manipur, Mizoram and Tripura.
- ❖ **Heavy Rainfall** likely at isolated places over East Rajasthan, East Uttar Pradesh, Gujarat Region, Konkan & Goa, Madhya Maharashtra, Sub Himalayan West Bengal & Sikkim and Uttarakhand.
- ❖ **Thunderstorm accompanied with Lightning** likely at isolated places over Uttarakhand.

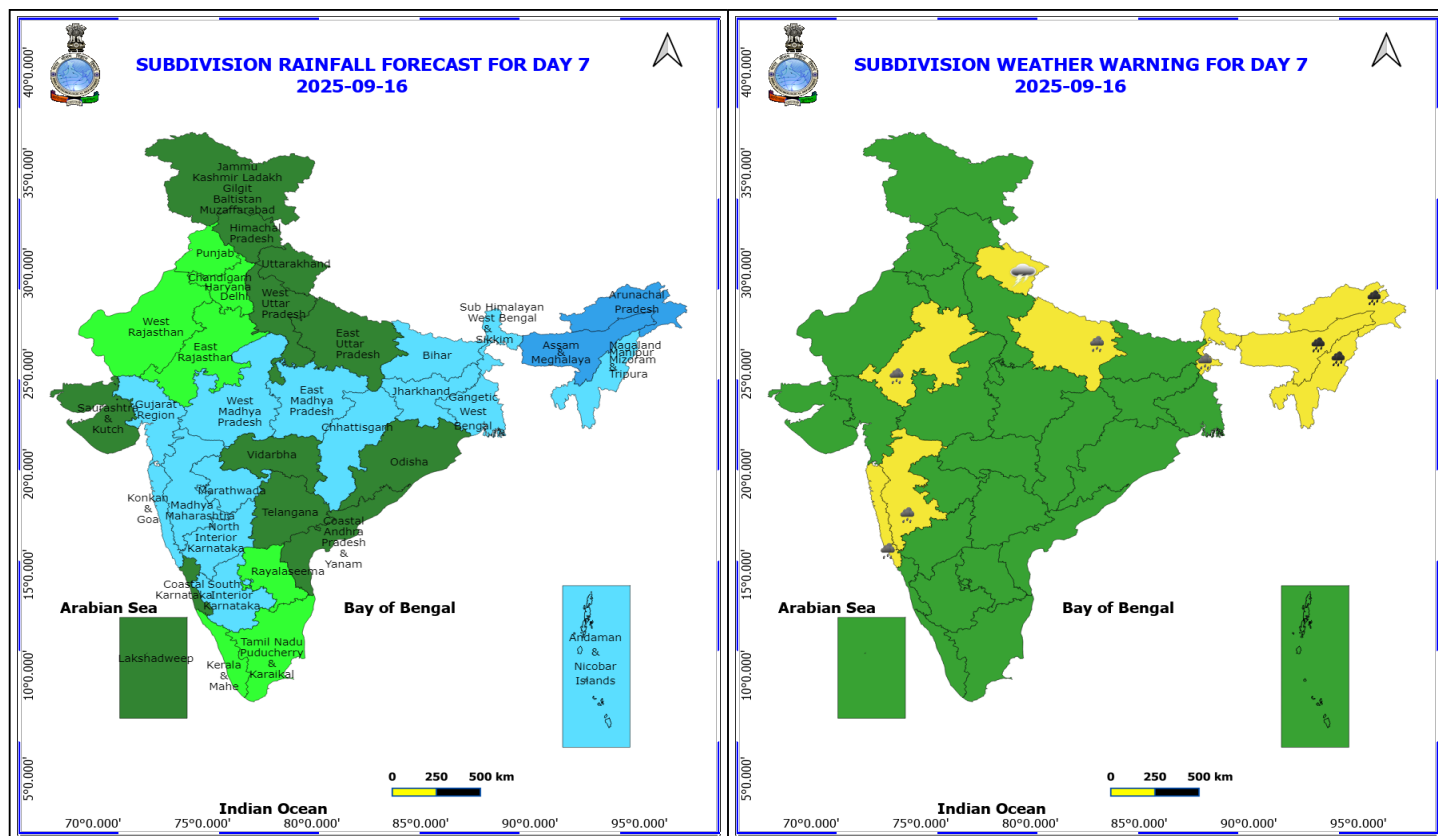
**No Fishermen Warning**

**\*Red color warning does not mean "Red Alert" Red color warning means "Take Action"**

Forecast and warning for any day is valid from 0830 hours IST of day till 0830 hours IST of next day

For more details kindly visit <https://mausam.imd.gov.in> or contact 011-2434-4599

(Service to the nation since 1875)



## 16 September (Day 7)

- ❖ **Heavy to Very Heavy Rainfall** likely at isolated places over Arunachal Pradesh, Assam & Meghalaya and Nagaland, Manipur, Mizoram and Tripura.
- ❖ **Heavy Rainfall** likely at isolated places over East Rajasthan, East Uttar Pradesh, Konkan & Goa, Madhya Maharashtra and Sub Himalayan West Bengal & Sikkim.
- ❖ **Thunderstorm accompanied with Lightning** likely at isolated places over Uttarakhand.

**No Fishermen Warning**

**\*Red color warning does not mean "Red Alert" Red color warning means "Take Action"**

Forecast and warning for any day is valid from 0830 hours IST of day till 0830 hours IST of next day

For more details kindly visit <https://mausam.imd.gov.in> or contact 011-2434-4599

(Service to the nation since 1875)



# Table-1

## 7 Days Rainfall Forecast

S.No.	Subdivision	10-Sep	11-Sep	12-Sep	13-Sep	14-Sep	15-Sep	16-Sep
		Day 1	Day 2	Day 3	Day 4	Day 5	Day 6	Day 7
1	ANDAMAN & NICOBAR ISLANDS	WS	WS	WS	WS	WS	FWS	FWS
2	ARUNACHAL PRADESH	SCT	FWS	FWS	WS	WS	WS	WS
3	ASSAM & MEHGHALAYA	SCT	FWS	WS	WS	WS	WS	WS
4	N. M. M. & T.	FWS	FWS	WS	WS	WS	FWS	FWS
5	S.H. WEST BENGAL & SIKKIM	WS	WS	FWS	FWS	FWS	FWS	FWS
6	GANGETIC WEST BENGAL	SCT	FWS	FWS	FWS	SCT	FWS	FWS
7	ODISHA	SCT	FWS	FWS	SCT	SCT	SCT	SCT
8	JHARKHAND	FWS	FWS	FWS	FWS	FWS	FWS	FWS
9	BIHAR	FWS	FWS	FWS	FWS	FWS	FWS	FWS
10	EAST UTTAR PRADESH	ISOL	ISOL	ISOL	ISOL	ISOL	SCT	SCT
11	WEST UTTAR PRADESH	ISOL	ISOL	ISOL	ISOL	ISOL	ISOL	SCT
12	UTTARAKHAND	SCT	SCT	FWS	FWS	FWS	FWS	SCT
13	HARYANA, CHD & DELHI	ISOL	ISOL	ISOL	SCT	SCT	ISOL	ISOL
14	PUNJAB	ISOL	ISOL	ISOL	SCT	SCT	ISOL	ISOL
15	HIMACHAL PRADESH	SCT	SCT	SCT	FWS	FWS	FWS	SCT
16	JAMMU AND KASHMIR AND LADAKH	ISOL	ISOL	ISOL	SCT	SCT	SCT	SCT
17	WEST RAJASTHAN	ISOL	DRY	DRY	DRY	DRY	DRY	ISOL
18	EAST RAJASTHAN	ISOL	ISOL	ISOL	ISOL	ISOL	ISOL	ISOL
19	WEST MADHYA PRADESH	SCT	SCT	SCT	SCT	FWS	FWS	FWS
20	EAST MADHYA PRADESH	SCT	FWS	FWS	FWS	FWS	FWS	FWS
21	GUJRAT REGION	SCT	SCT	SCT	FWS	FWS	FWS	FWS
22	SAURASHTRA & KUTCH	SCT	SCT	SCT	SCT	SCT	SCT	SCT
23	KONKAN & GOA	ISOL	ISOL	SCT	FWS	WS	WS	FWS
24	MADHYA MAHARASHTRA	ISOL	SCT	SCT	FWS	WS	FWS	FWS
25	MARATHWADA	ISOL	ISOL	FWS	FWS	WS	FWS	FWS
26	VIDARBHA	FWS	FWS	WS	WS	WS	FWS	SCT
27	CHATTISGARH	FWS	WS	WS	WS	FWS	FWS	FWS
28	COASTAL ANDHRA PRADESH	SCT	FWS	WS	FWS	FWS	SCT	SCT
29	TELANGANA	SCT	SCT	FWS	FWS	FWS	SCT	SCT
30	RAYALASEEMA	ISOL	SCT	FWS	WS	SCT	SCT	ISOL
31	TAMILNADU & PUDUCHERRY	FWS	SCT	ISOL	ISOL	ISOL	ISOL	ISOL
32	COSTAL KARNATAKA	ISOL	ISOL	ISOL	SCT	SCT	SCT	SCT
33	NORTH INTERIOR KARNATAKA	ISOL	SCT	FWS	WS	FWS	FWS	FWS
34	SOUTH INTERIOR KARNATAKA	SCT	SCT	FWS	FWS	SCT	SCT	FWS
35	KERALA	SCT	SCT	SCT	SCT	SCT	ISOL	ISOL
36	LAKSHDWEEP	SCT	SCT	SCT	SCT	SCT	SCT	SCT

Legend	Category	%Stations
WS	Widespread/Most Places	76-100
FWS	Fairly Widespread/Many Places	51-75
SCT	Scattered/ A Few Places	26-50
ISOL	Isolated Places	1-25
DRY	No Rain	0

\*Red color warning does not mean "Red Alert" Red color warning means "Take Action"

Forecast and warning for any day is valid from 0830 hours IST of day till 0830 hours IST of next day

For more details kindly visit <https://mausam.imd.gov.in> or contact 011-2434-4599

(Service to the nation since 1875)

Fig. 1: Maximum Temperatures Dated 2025-09-10

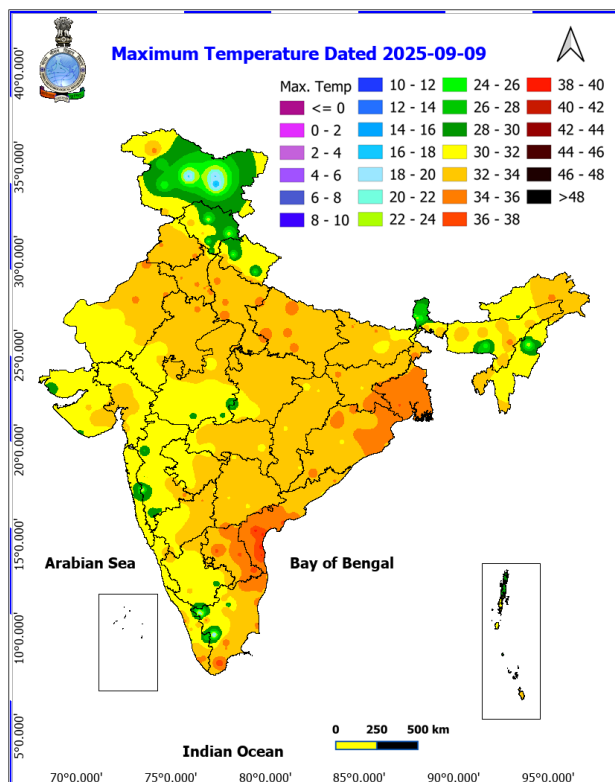


Fig. 2: Departure of Maximum Temp. Dated 2025-09-10

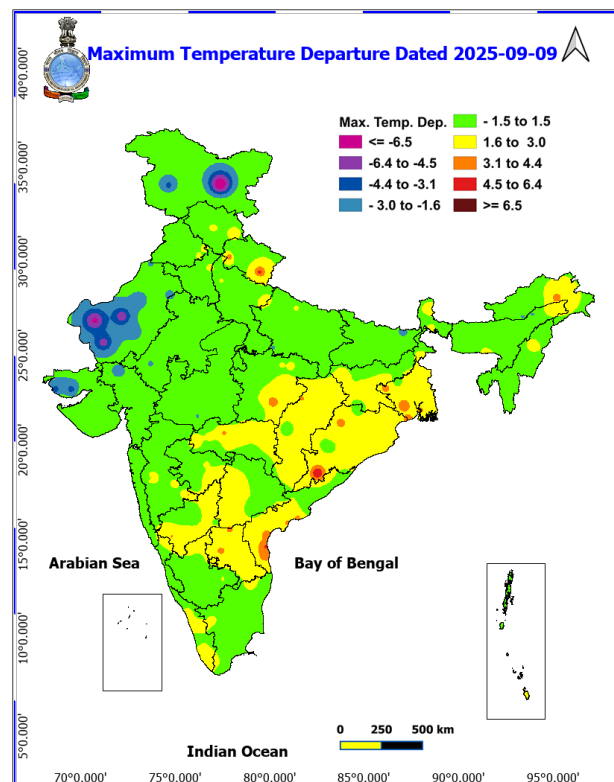


Fig. 3: Minimum Temperatures Dated 2025-09-10

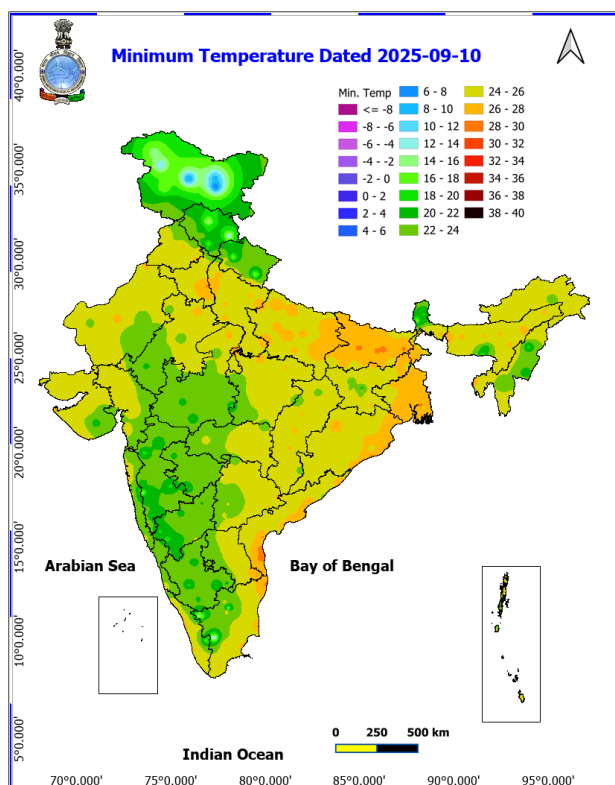
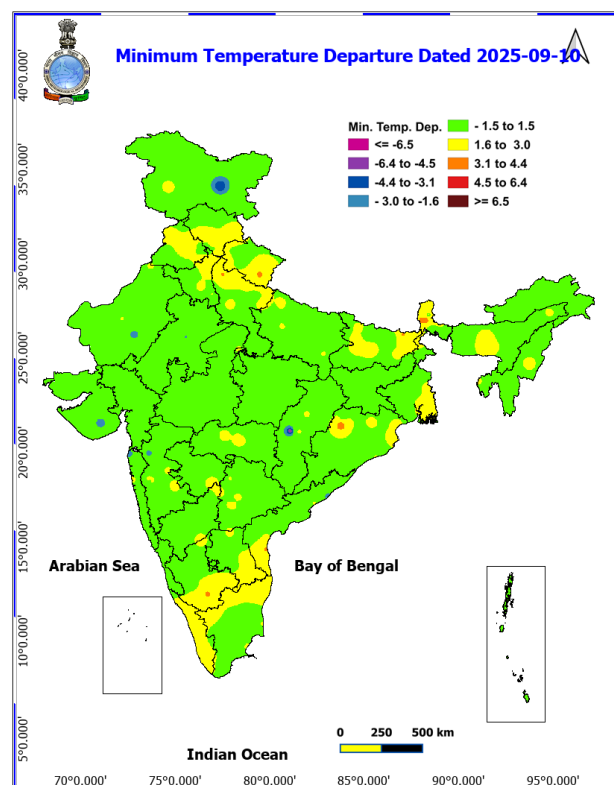
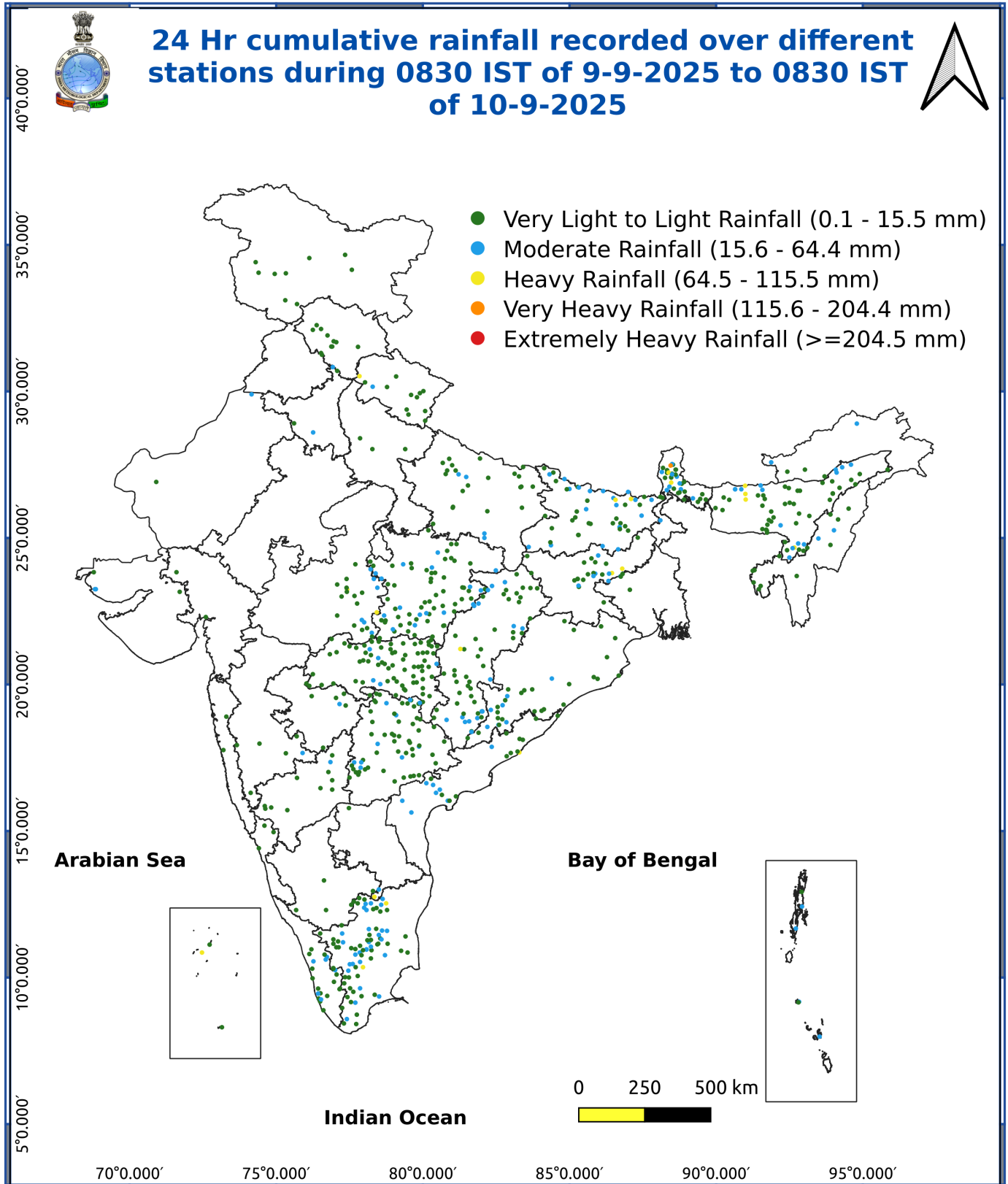


Fig. 4: Departure of Minimum Temp. Dated 2025-09-10





\*Red color warning does not mean "Red Alert" Red color warning means "Take Action"

Forecast and warning for any day is valid from 0830 hours IST of day till 0830 hours IST of next day

For more details kindly visit <https://mausam.imd.gov.in> or contact 011-2434-4599

(Service to the nation since 1875)

### Impact & Action Suggested due to

**Heavy to very heavy rainfall (12-20 cm)** at isolated places over Sub-Himalayan West Bengal & Sikkim on 10<sup>th</sup> & 13<sup>th</sup>; Odisha on 11<sup>th</sup>; Arunachal Pradesh and Nagaland, Manipur, Mizoram & Tripura during 12<sup>th</sup>-16<sup>th</sup>; Assam & Meghalaya during 13<sup>th</sup>-16<sup>th</sup>; Marathwada on 13<sup>th</sup>; Konkan & Goa and Madhya Maharashtra on 14<sup>th</sup> September.

### Impact Expected

Localized Flooding of roads, water logging in low lying areas and closure of underpasses mainly in urban areas of the above region.

Occasional reduction in visibility due to heavy rainfall.

Disruption of traffic in major cities due to water logging in roads leading to increased travel time.

Minor damage to kutcha roads.

Possibilities of damage to vulnerable structure.

Localized Landslides/Mudslides/landslips/mudslips/landsinks/mudsinks.

Damage to horticulture and standing crops in some areas due to inundation.

It may lead to riverine flooding in some river catchments (for riverine flooding please visit Web page of CWC)

### Action Suggested

Check for traffic congestion on your route before leaving for your destination.

Follow any traffic advisories that are issued in this regard.

Avoid going to areas that face the water logging problems often.

Avoid staying in vulnerable structure.

### Agromet advisories for various parts of the country

#### Agromet advisories for likely impact of Heavy / Heavy to Very Heavy Rainfall

(Based on the IBF and advisories issued by different AMFUs)

In **Arunachal Pradesh**, immediately harvest matured crops of *Jhum* rice, finger millet, soybean and matured bunches of banana and shift to properly covered shelter. Maintain proper drainage in standing crops like rice, soybean, finger millet and vegetables to avoid water stagnation.

In **Assam**, ensure proper drainage in fields of rice, sugarcane, black gram and sesame in **Hill Zone**. In **Lower Brahmaputra Valley Zone**, ensure proper drainage system in *Sali* rice fields and nursery bed of vegetables. Cover the nursery bed with thin polythin to avoid the damages due to heavy rainfall. In **Barak Valley Zone**, postpone the sowing of green gram and black gram and provide adequate drainage facilities in fields of rice, vegetables and already sown green gram and black gram.

In **Meghalaya**, maintain proper drainage in ginger and vegetable fields and fruit orchards. Provide support to banana

\*Red color warning does not mean "Red Alert" Red color warning means "Take Action"

Forecast and warning for any day is valid from 0830 hours IST of day till 0830 hours IST of next day

For more details kindly visit <https://mausam.imd.gov.in> or contact 011-2434-4599

(Service to the nation since 1875)

plants to prevent lodging. Maintain a thin layer of 2-3 cm stagnant water in rice fields after transplanting.

In **Nagaland**, undertake harvesting of matured Jhum rice, pods of sesame and Naga King chilli and store the harvested produce in safe places. Maintain 3-5cm stagnate water in rice fields.

In **Mizoram**, undertake harvesting of matured cobs of maize.

In **Manipur**, harvest matured cobs of maize, matured pods of soybean and groundnut and matured grains of finger millet.

In **Sub-Himalayan West Bengal**, make provision to drain out excess water from *aman* paddy and vegetable fields (chilli, bitter gourd, pointed gourd, okra, brinjal etc.) in **Terai Zone**.

In **Odisha**, make arrangements for draining out excess water from the field of pulses (pigeon pea, black gram, green gram), maize, groundnut and vegetables (tomato, brinjal, okra, chilli) in **Eastern Ghat High Land Zone** and **South Eastern Ghat Zone**.

### Livestock / Fishery

Keep the animals inside the shed during heavy rainfall and provide them balanced feed.

Store feed and fodder in a safe place to prevent spoilage.

Construct an outlet with proper netting around the ponds to drain out excess water, thereby preventing fish from escaping in case of overflow.

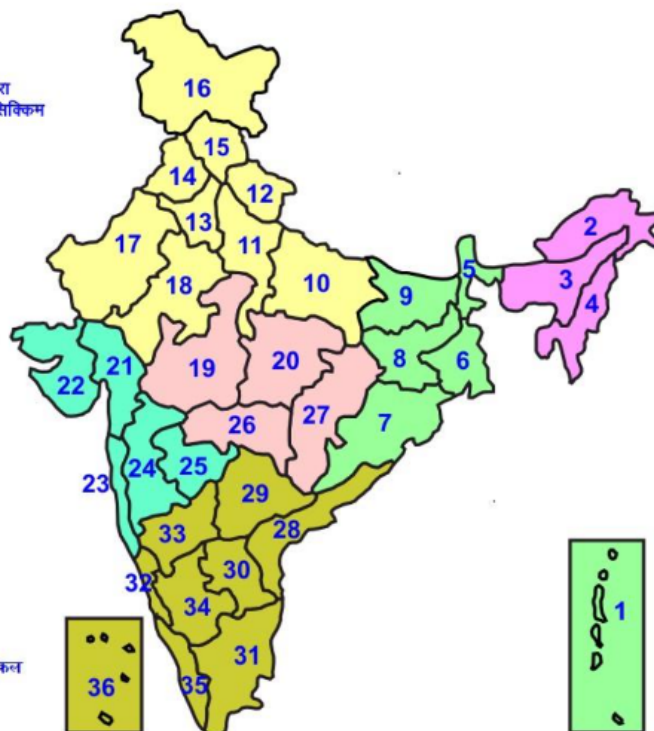
### Agromet advisories for likely impact of Thunderstorm / Gusty Winds / Squally Winds

(Based on the IBF and advisories issued by different AMFUs)

Provide mechanical support to horticultural crops and staking or support to vegetables and young fruit plants / fruit-bearing plants to avoid lodging due to strong winds.

## LEGENDS

- 1 अंडमान और निकोबार द्वीप समुह
- 2 अरुणाचल प्रदेश
- 3 असम और मेघालय
- 4 नागालैंड मनीपुर मीजोरम और त्रिपुरा
- 5 उप हिमालय पश्चिम बंगाल एवं सिक्किम
- 6 पश्चिम बंगाल
- 7 ओडिसा
- 8 झारखंड
- 9 बिहार
- 10 पूर्वी उत्तर प्रदेश
- 11 पश्चिम उत्तर प्रदेश
- 12 उत्तराखंड
- 13 हरियाणा चंडीगढ़ एवं दिल्ली
- 14 पंजाब
- 15 हिमाचल प्रदेश
- 16 जम्मू एवं कश्मीर एवं लद्दाख
- 17 पश्चिम राजस्थान
- 18 पूर्वी राजस्थान
- 19 पश्चिम मध्य प्रदेश
- 20 पूर्वी मध्य प्रदेश
- 21 गुजरात क्षेत्र
- 22 सौराष्ट्र एवं कच्छ
- 23 कोंकण एवं गोवा
- 24 मध्य महाराष्ट्र
- 25 मराठावाड़ा
- 26 विदर्भ
- 27 छत्तीसगढ़
- 28 तटीय आंध्र प्रदेश एवं यनम
- 29 तेलंगाना
- 30 रायलसीमा
- 31 तमिलनाडु, पुदुचेरी एवं कराईकल
- 32 तटिय कर्नाटक
- 33 आंतरिक उत्तरी कर्नाटक
- 34 आंतरिक दक्षिणी कर्नाटक
- 35 केरल एवं माहे
- 36 लक्षद्वीप



1. Andaman & Nicobar Islands
2. Arunachal Pradesh
3. Assam & Meghalaya
4. Nagaland, Manipur, Mizoram & Tripura
5. Sub-Himalayan West Bengal & Sikkim
6. Gangetic West Bengal
7. Orissa
8. Jharkhand
9. Bihar
10. East Uttar Pradesh
11. West Uttar Pradesh
12. Uttarakhand
13. Haryana, Chd & Delhi
14. Punjab
15. Himachal Pradesh
16. Jammu & Kashmir and Ladakh
17. West Rajasthan
18. East Rajasthan
19. West Madhya Pradesh
20. East Madhya Pradesh
21. Gujarat
22. Saurashtra
23. Konkan & Goa
24. Madhya Maharashtra
25. Marathwada
26. Vidharbha
27. Chhattisgarh
28. Coastal Andhra Pradesh & Yanam
29. Telangana
30. Rayalaseema
31. Tamilnadu, Puducherry & Karaikal
32. Coastal Karnataka
33. North Interior Karnataka
34. South Interior Karnataka
35. Kerala & Mahe
36. Lakshadweep

## SPATIAL DISTRIBUTION (% of Stations reporting)


% Stations	Category	% Stations	Category
76-100	Widespread (WS/Most Places)	26-50	Scattered (SCT/ A Few Places)
51-75	Fairly Widespread (FWS/ Many Places)	1-25	Isolated (ISOL)


### Subdivision Colour


- NO WARNING
- WATCH (BE UPDATED)
- ALERT (BE PREPARED TO TAKE ACTION)
- WARNING (TAKE ACTION)


### Probabilistic Forecast


Terms	Probability of Occurrence (%)
Unlikely	< 25
Likely	25 - 50
Very Likely	50 - 75
Most Likely	> 75


-  Heavy Rain


 Thunderstorm & Lightning


 Strong surface winds


 Cold Wave


 Hot & Humid


 Very Heavy Rain


 Hailstorm


 Heat Wave


 Cold Day


 Extremely Heavy Rain


 Dust Storm


 Hot Day

 Ground Frost

 Heavy Snow

 Dust Raising Winds

 Warm Night

 Fog

\*Red color warning does not mean "Red Alert" Red color warning means "Take Action"

Forecast and warning for any day is valid from 0830 hours IST of day till 0830 hours IST of next day

For more details kindly visit <https://mausam.imd.gov.in> or contact 011-2434-4599

(Service to the nation since 1875)

## LEGENDS

### WARNING

<b>WARNING (TAKE ACTION)</b>
<b>ALERT (BE PREPARED)</b>
<b>WATCH (BE UPDATED)</b>
<b>NO WARNING (NO ACTION)</b>

### Probabilistic Forecast

Terms	Probability of Occurrence (%)
Unlikely	< 25
Likely	25 - 50
Very Likely	50 - 75
Most Likely	> 75



Heavy: 64.5 to 115.5 mm/cm \*  
Very Heavy: 115.6 to 204.4 mm/cm \*  
Extremely Heavy: > 204.4 mm/cm \*



When maximum temperature of a station reaches  $\geq 40^{\circ}\text{C}$  for plains and  $\geq 30^{\circ}\text{C}$  for hilly regions  
(a) Based on Departure from normal

Heat Wave: Maximum Temperature Departure from normal  $4.5^{\circ}\text{C}$  to  $6.4^{\circ}\text{C}$ .  
Severe Heat Wave: Maximum Temperature Departure from normal  $\geq 6.5^{\circ}\text{C}$

(b). Based on Actual maximum temperature

Heat Wave: When actual maximum temperature  $\geq 45^{\circ}\text{C}$ .  
Severe Heat Wave: When actual maximum temperature  $\geq 47^{\circ}\text{C}$

(c). Criteria for heat wave for coastal stations

When maximum temperature departure is  $> 4.5^{\circ}\text{C}$  from normal. Heat Wave may be described provided maximum temperature  $\geq 37^{\circ}\text{C}$



When maximum temperature remains  $40^{\circ}\text{C}$

Warm Night: When minimum temperature departure  $4.5^{\circ}\text{C}$  to  $6.4^{\circ}\text{C}$ .  
Severe Warm Night: When minimum temperature departure  $> 6.4^{\circ}\text{C}$ .



When minimum temperature of a station  $\leq 10^{\circ}\text{C}$  for plains and  $\leq 0^{\circ}\text{C}$  for hilly regions.

(a). Based on departure

Cold Wave: Minimum Temperature Departure from normal  $-4.5^{\circ}\text{C}$  to  $-6.4^{\circ}\text{C}$ .  
Severe Cold Wave: Minimum Temperature Departure from normal  $\leq -6.5^{\circ}\text{C}$

(b) Based on actual Minimum Temperature (for Plains only)

Cold Wave: When Minimum Temperature is  $\leq 4.0^{\circ}\text{C}$   
Severe Cold Wave: When Minimum Temperature is  $\leq 2.0^{\circ}\text{C}$

(c) For Coastal Stations

When Minimum Temperature departure is  $\leq -4.5^{\circ}\text{C}$  & actual Minimum Temperature is  $\leq 15^{\circ}\text{C}$



When minimum temperature of a station  $\leq 10^{\circ}\text{C}$  for plains and  $\leq 0^{\circ}\text{C}$  for hilly regions  
Based on departure

Cold Day: Maximum Temperature Departure from normal  $-4.5^{\circ}\text{C}$  to  $-6.4^{\circ}\text{C}$ .  
Severe Cold Day: Maximum Temperature Departure from normal  $\leq -6.5^{\circ}\text{C}$



Phenomenon of small droplets suspended in air and the horizontal visibility  $< 1\text{km}$

Moderate Fog: When the visibility between 500-200 metres  
Dense Fog: when the visibility between 50-200 metres  
Very Dense Fog: when the visibility  $< 50$  metres



Sudden electrical discharges manifested by a flash of light (Lightning) and a sharp rumbling sound (thunder)



An ensemble of particles of dust or sand energetically lifted to great heights by a strong and turbulent wind.



Ice deposits on ground

Air temperature  $\leq 4^{\circ}\text{C}$  (over Plains)



A strong wind that rises suddenly, lasts for at least 1 minute.

Moderate: Wind speed 52-61 kmph  
Severe: Wind speed 62-87 kmph  
Very Severe: Wind speed  $> 87$  kmph



Effect of various waves in the sea over specific area

Rough to very rough: Wind speed 41-62 kmph (22-33 knots) & Wave height 2.5-6 metre  
High to very high: Wind speed 63-117 kmph (34-63 knots) & Wave height 6-14 metre  
Phenomenal: Wind speed  $> 117$  kmph ( $> 63$  knots) & Wave height  $> 14$  metre



Cyclonic Storm: Wind speed 62-87 kmph (34-47 knots)

Severe Cyclonic Storm: Wind speed 88-117 kmph (48-63 knots)  
Very Severe Cyclonic Storm: Wind speed 118-165 kmph (64-89 knots)  
Extremely Severe Cyclonic Storm: Wind speed 166-220 kmph (90-119 knots)  
Super Cyclone Storm: Wind speed  $> 220$  kmph ( $> 119$  knots)

\*Red color warning does not mean "Red Alert" Red color warning means "Take Action"

Forecast and warning for any day is valid from 0830 hours IST of day till 0830 hours IST of next day

For more details kindly visit <https://mausam.imd.gov.in> or contact 011-2434-4599

(Service to the nation since 1875)