

2025-09-06

Time of Issue: 08:30:00 hours IST
(Morning)

ALL INDIA WEATHER SUMMARY AND FORECAST BULLETIN

Significant Weather Features

Weather Forecast and Warnings:

West and Northwest India:

Extremely heavy rainfall very likely at isolated places over Gujarat Region, Saurashtra & Kutch on 06th & 07th September with exceptionally heavy rainfall (≥ 30 cm) over Gujarat region 06th; East Rajasthan on 06th and southwest Rajasthan on 07th September, 2025.

Isolated heavy rainfall is very likely over West Rajasthan on 08th; Uttarakhand on 06th & 07th; Himachal Pradesh on 08th & 09th; Haryana Chandigarh & Delhi during 08th–10th; Punjab on 10th; East Uttar Pradesh on 10th & 11th; East Rajasthan on 08th September; Konkan & Goa, Madhya Maharashtra on 07th; Gujarat State on 08th September with **very heavy rainfall over Konkan & Goa and Madhya Maharashtra on 06th; West Rajasthan on 06th; East Rajasthan on 07th September.**

Light to moderate rainfall accompanied with thunderstorm & lightning at a most/many places very likely over the region during next 7 days.

East & Central India:

Isolated **heavy rainfall** likely over West Madhya Pradesh on 06th; Sub-Himalayan West Bengal & Sikkim during next 7 days; Bihar on during 08th-10th; Andaman & Nicobar Islands on 09th & 10th; Chhattisgarh on 10th & 11th September.

Light to moderate rainfall at most/many places accompanied with thunderstorm & lightning likely over the region during next 7 days.

Northeast India:

Isolated **heavy rainfall** likely over Assam & Meghalaya on 06th, 07th, 10th & 11th; Nagaland, Manipur, Mizoram & Tripura on 06th & 07th and Arunachal Pradesh during 07th-09th September.

Light/moderate rainfall at many places accompanied with thunderstorm & lightning likely during next 7 days.

South Peninsular India:

Isolated **heavy rainfall** likely over Tamil Nadu on 06th and during 08th-10th; Kerala & Mahe on 09th & 10th; September.

Strong surface winds (speed reaching 30-40 kmph) very likely over Coastal Andhra Pradesh & Yanam, Rayalaseema during next 5 days.

Light to moderate rainfall accompanied with thunderstorm & lightning at a few places likely over the region during next 5 days.

*Red color warning does not mean "Red Alert" Red color warning means "Take Action"

Forecast and warning for any day is valid from 0830 hours IST of day till 0830 hours IST of next day

For more details kindly visit <https://mausam.imd.gov.in> or contact 011-2434-4599

(Service to the nation since 1875)

Main Weather Observations:

❖ **Rainfall distribution** (from 0830 hours IST to 1730 hours IST of yesterday): **at most places** over Konkan & Goa, West Madhya Pradesh, Arunachal Pradesh and East Rajasthan; **at many places** over Odisha, West Uttar Pradesh, Madhya Maharashtra, Sub-himalayan West Bengal & Sikkim, Tamilnadu Puducherry & Karaikal, Himachal Pradesh, Saurashtra & Kutch, Nagaland, Manipur, Mizoram & Tripura, Gangetic West Bengal, Jharkhand, Bihar, Uttarakhand, Haryana Chandigarh & Delhi, Jammu & Kashmir and Ladakh, West Rajasthan, Gujarat Region, East Madhya Pradesh, Assam & Meghalaya, Andaman & Nicobar Islands, Marathwada, Vidarbha, Chhattisgarh, Coastal Andhra Pradesh & Yanam, Telangana, Coastal Karnataka, North Interior Karnataka, Kerala & Mahe, East Uttar Pradesh and Lakshadweep; **Dry** over rest of the country.

❖ **Significant rainfall recorded(in cm)** (from 0830 hours IST to 1730 hours IST of yesterday): **East Rajasthan: Jhalawar 8, Kotputli 6; Gujarat Region: Aravalli 11, Mahi Sagar 7, Junagarh 6, Gir Somnath, Tapi 5 each; Konkan & Goa** : Matheran (dist Raigad) 6, T.b.i.a (dist Thane) 5; **Odisha**: Cuttack (dist Cuttack) 5, Bhubaneswar (dist Khordha) 3; **West Madhya Pradesh**: Ujjain (dist Ujjain) 5, Indore (dist Indore) 4; **Saurashtra & Kutch**: Veraval (dist Gir Somnath) 4; **West Uttar Pradesh**: Orai (dist Jalaun), Agra (dist Agra) 4 Each; **Assam & Meghalaya**: Cherrapunji (dist East Khasi Hills) 3; **East Uttar Pradesh**: Hamirpur (dist Hamirpur) 3.

❖ **Heavy Rainfall observed** (from 0830 hours IST to 1730 hours IST of yesterday): **Heavy rain** at isolated places over East Rajasthan, Gujarat Region.

❖ **Minimum Temperature Departures (as on 05-09-2025)**: **markedly above normal(> 5.1°C)** at isolated places over Assam & Meghalaya, Sub Himalayan West Bengal & Sikkim, Bihar, East Uttar Pradesh, West Uttar Pradesh, Himachal Pradesh, West Madhya Pradesh and Vidarbha. **appreciably above normal(3.1°C to 5.0°C)** at many places over East Madhya Pradesh; at isolated places over Odisha, West Rajasthan and Coastal Andhra Pradesh & Yanam. **above normal(1.6°C to 3.0°C)** at few places over Andaman & Nicobar Islands, Tamil Nadu, Puducherry & Karaikal and Lakshadweep; at isolated places over Nagaland, Manipur, Mizoram & Tripura, Haryana-Chandigarh-Delhi, Jammu-KashmirLadakh-Gilgit-Baltistan-Muzaffarabad, Saurashtra & Kutch and Madhya Maharashtra. **near normal(-1.5°C to 1.5°C)** at many places over Chhattisgarh and Kerala & Mahe; at most places over Arunachal Pradesh, Gangetic West Bengal, Jharkhand, Uttarakhand, Punjab, East Rajasthan, Gujarat Region, Konkan & Goa, Marathwada, Telangana, Rayalaseema, Coastal Karnataka, North Interior Karnataka and South Interior Karnataka. **The lowest minimum temperature** of 17.4°C was reported at KHANDWA (MADHYA PRADESH) over the Plains of India.

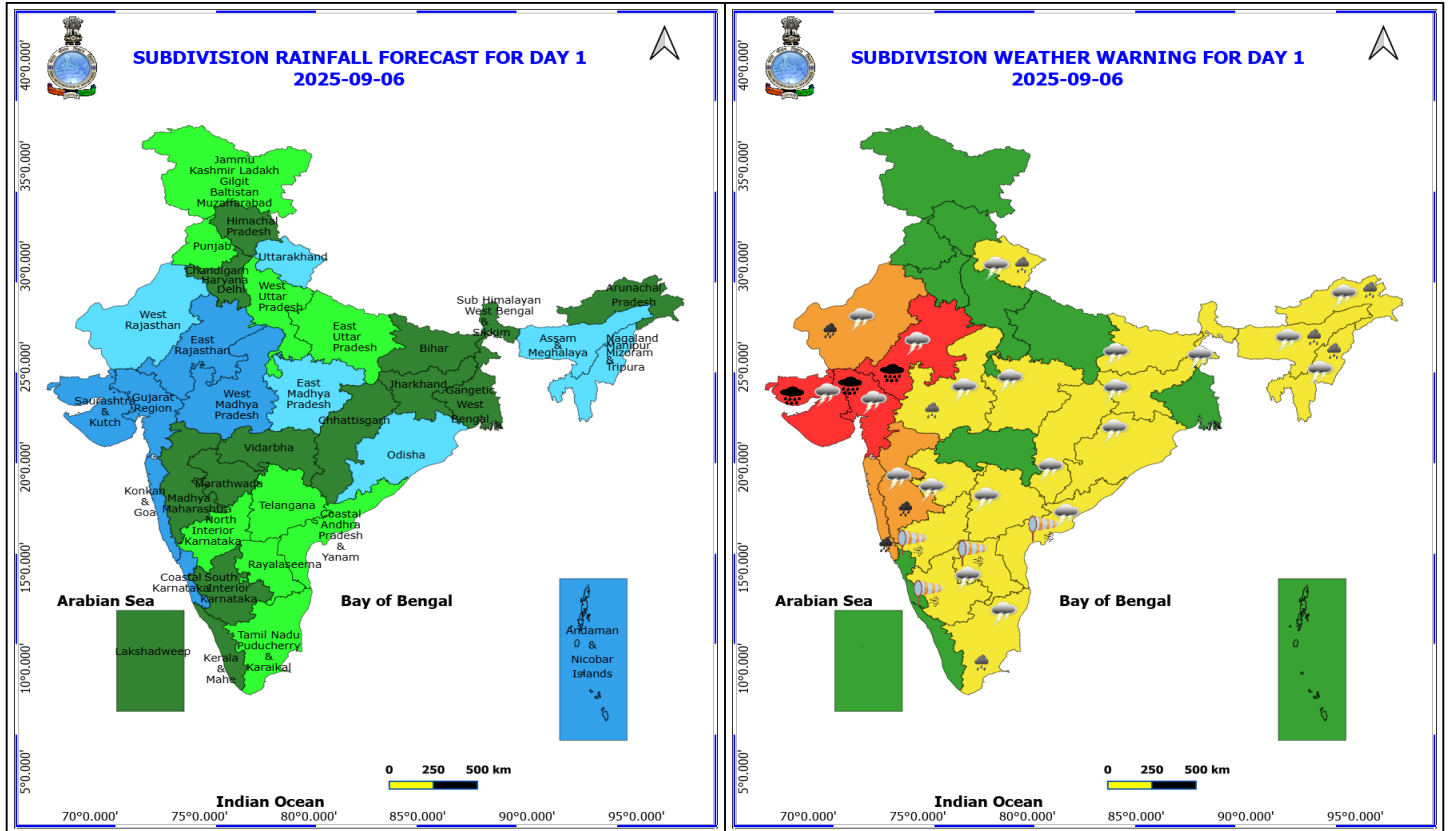
❖ **Maximum Temperature Departures (as on 05-09-2025)**: **markedly above normal(> 5.1°C)** at isolated places over Assam & Meghalaya and Odisha. **appreciably above normal(3.1°C to 5.0°C)** at few places over Sub Himalayan West Bengal & Sikkim; at isolated places over Bihar, Chhattisgarh, Coastal Andhra Pradesh & Yanam and Tamil Nadu, Puducherry & Karaikal. **above normal(1.6°C to 3.0°C)** at most places over Nagaland, Manipur, Mizoram & Tripura; at few places over Gangetic West Bengal, Jharkhand, Jammu-KashmirLadakh-Gilgit-Baltistan-Muzaffarabad, Telangana and Kerala & Mahe; at isolated places over East Uttar Pradesh, Uttarakhand, Haryana-Chandigarh-Delhi, Punjab and West Rajasthan. **near normal(-1.5°C to 1.5°C)** at many places over Andaman & Nicobar Islands, West Uttar Pradesh, Gujarat Region, Marathwada, Rayalaseema and South Interior Karnataka; at most places over Arunachal Pradesh, Himachal Pradesh, Coastal Karnataka, North Interior Karnataka and Lakshadweep; at few places over East Madhya Pradesh, Saurashtra & Kutch, Konkan & Goa and Madhya Maharashtra; at isolated places over East Rajasthan and Vidarbha. **The highest maximum temperature** of 40.2°C was reported at MADURAI (A) (TAMIL NADU).

Meteorological Analysis (Based on 0530 hours IST)

- The **well marked low pressure** area over Northwest Madhya Pradesh & adjoining East Rajasthan moved west-northwestwards and lay over southeast Rajasthan & neighbourhood at 0530 hrs IST of today, the 06th September, 2025. The associated cyclonic circulation extended upto 9.6 km above mean sea level tilting southwards with height. It is likely to continue to move west-northwestwards and concentrate into a depression over South Rajasthan & adjoining North Gujarat during next 24 hours.
- The **monsoon trough** now passes through Jaisalmer, centre of **well marked low pressure** area over southeast Rajasthan & neighbourhood, Guna, Damoh, Pendra Road, Puri and thence east-southeastwards to east central Bay of Bengal.
- The **trough** now runs from cyclonic circulation associated with **well marked low pressure area** over southeast Rajasthan & neighbourhood to northeast Jharkhand across Madhya Pradesh between 0.9 & 3.1 km above mean sea level.
- The **Western Disturbance** as a trough in middle & upper tropospheric westerlies with its axis at 5.8 km above mean sea level now runs roughly along Long. 69°E to the north of Lat. 28°N.
- The **upper air cyclonic circulation** over northeast Arabian sea & adjoining Gujarat coast merged with the cyclonic circulation associated with **well marked low pressure area** over southeast Rajasthan & neighbourhood.

Weather Outlook for subsequent 3 days

- Isolated to scattered rainfall likely over the entire country.



6 September (Day 1)

- ❖ **Heavy to Very Heavy Rainfall with isolated Extremely Heavy Rainfall** very likely at isolated places over East Rajasthan and Gujarat State.
- ❖ **Heavy to Very Heavy Rainfall** very likely at isolated places over Konkan & Goa, Madhya Maharashtra and West Rajasthan.
- ❖ **Heavy Rainfall** very likely at isolated places over Arunachal Pradesh, Assam & Meghalaya, Nagaland, Manipur, Mizoram and Tripura, Tamil Nadu Puducherry & Karaikal, Uttarakhand and West Madhya Pradesh.
- ❖ **Thunderstorm accompanied with lightning & gusty winds(30-40kmph)** very likely at isolated places over Bihar, Jharkhand, Odisha, Tamil Nadu Puducherry & Karaikal and Telangana.
- ❖ **Thunderstorm accompanied with Lightning** very likely at isolated places over Andhra Pradesh, Arunachal Pradesh, Assam & Meghalaya, Chhattisgarh, Gujarat State, Madhya Maharashtra, Madhya Pradesh, Marathwada, Nagaland, Manipur, Mizoram and Tripura, Rajasthan, Sub Himalayan West Bengal & Sikkim and Uttarakhand.
- ❖ **Strong Surface Winds** very likely at isolated places over Andhra Pradesh and Interior Karnataka.

Squally wind with speed reaching 45 kmph to 55 kmph gusting to 65 kmph is likely to prevail along and off Somalia coasts, some parts of westcentral & southwest Arabian Sea.

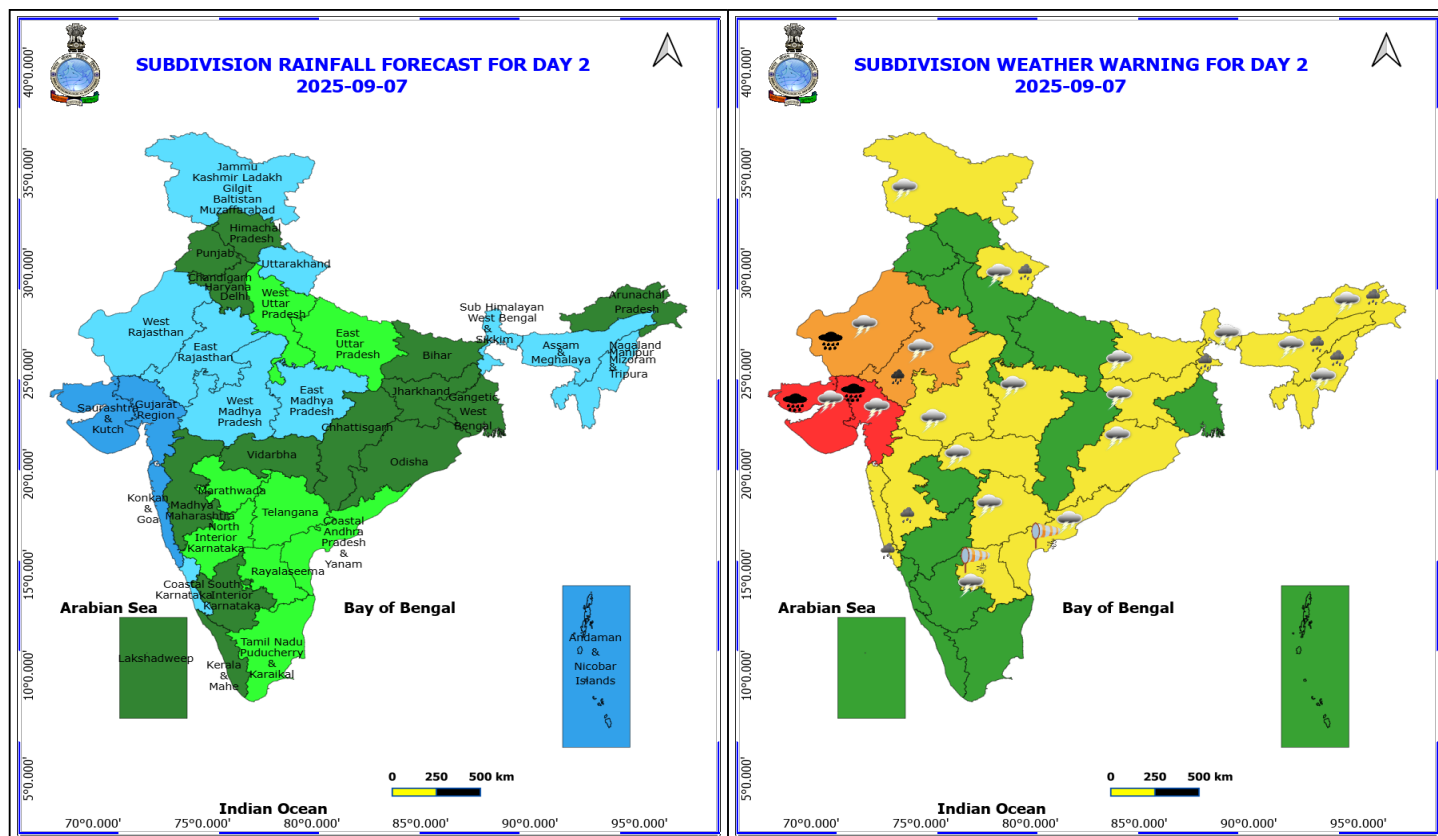
Squally weather with wind speed reaching 40 - 50 kmph gusting to 60 kmph likely to prevail along and off Gujarat, off north Maharashtra coasts and adjoining some parts of eastcentral & northeast Arabian Sea, off Tamil Nadu coasts, over most parts of southwest Bay of Bengal & adjoining sea areas, Sri Lanka coast, over Gulf of Mannar.

***Red color warning does not mean "Red Alert" Red color warning means "Take Action"**

Forecast and warning for any day is valid from 0830 hours IST of day till 0830 hours IST of next day

For more details kindly visit <https://mausam.imd.gov.in> or contact 011-2434-4599

(Service to the nation since 1875)



7 September (Day 2)

- ❖ **Heavy to Very Heavy Rainfall with isolated Extremely Heavy Rainfall** very likely at isolated places over Gujarat State and West Rajasthan.
- ❖ **Heavy to Very Heavy Rainfall** very likely at isolated places over East Rajasthan.
- ❖ **Heavy Rainfall** very likely at isolated places over Arunachal Pradesh, Assam & Meghalaya, Konkan & Goa, Madhya Maharashtra, Nagaland, Manipur, Mizoram and Tripura, Sub Himalayan West Bengal & Sikkim and Uttarakhand.
- ❖ **Thunderstorm accompanied with lightning & gusty winds(30-40kmph)** very likely at isolated places over Bihar, Jammu-Kashmir-Ladakh-Gilgit-Baltistan-Muzaffarabad, Jharkhand, Odisha and Telangana.
- ❖ **Thunderstorm accompanied with Lightning** very likely at isolated places over Andhra Pradesh, Arunachal Pradesh, Assam & Meghalaya, Gujarat State, Madhya Pradesh, Nagaland, Manipur, Mizoram and Tripura, Rajasthan, Sub Himalayan West Bengal & Sikkim, Uttarakhand and Vidarbha.
- ❖ **Strong Surface Winds** very likely at isolated places over Andhra Pradesh.

Squally wind with speed reaching 45 kmph to 55 kmph gusting to 65 kmph is likely to prevail along and off Somalia coasts, some parts of southwest & adjoining westcentral Arabian Sea.

Squally weather with wind speed reaching 40 - 50 kmph gusting to 60 kmph likely to prevail along and off Gujarat, off north Maharashtra coasts, northeast Arabian Sea & adjoining some parts of eastcentral & northeast Arabian Sea; over Gulf of Mannar and some parts of south Bay of Bengal.

Squally weather with wind speed reaching 45 - 55 kmph gusting to 65 kmph likely to prevail along and off south

***Red color warning does not mean "Red Alert" Red color warning means "Take Action"**

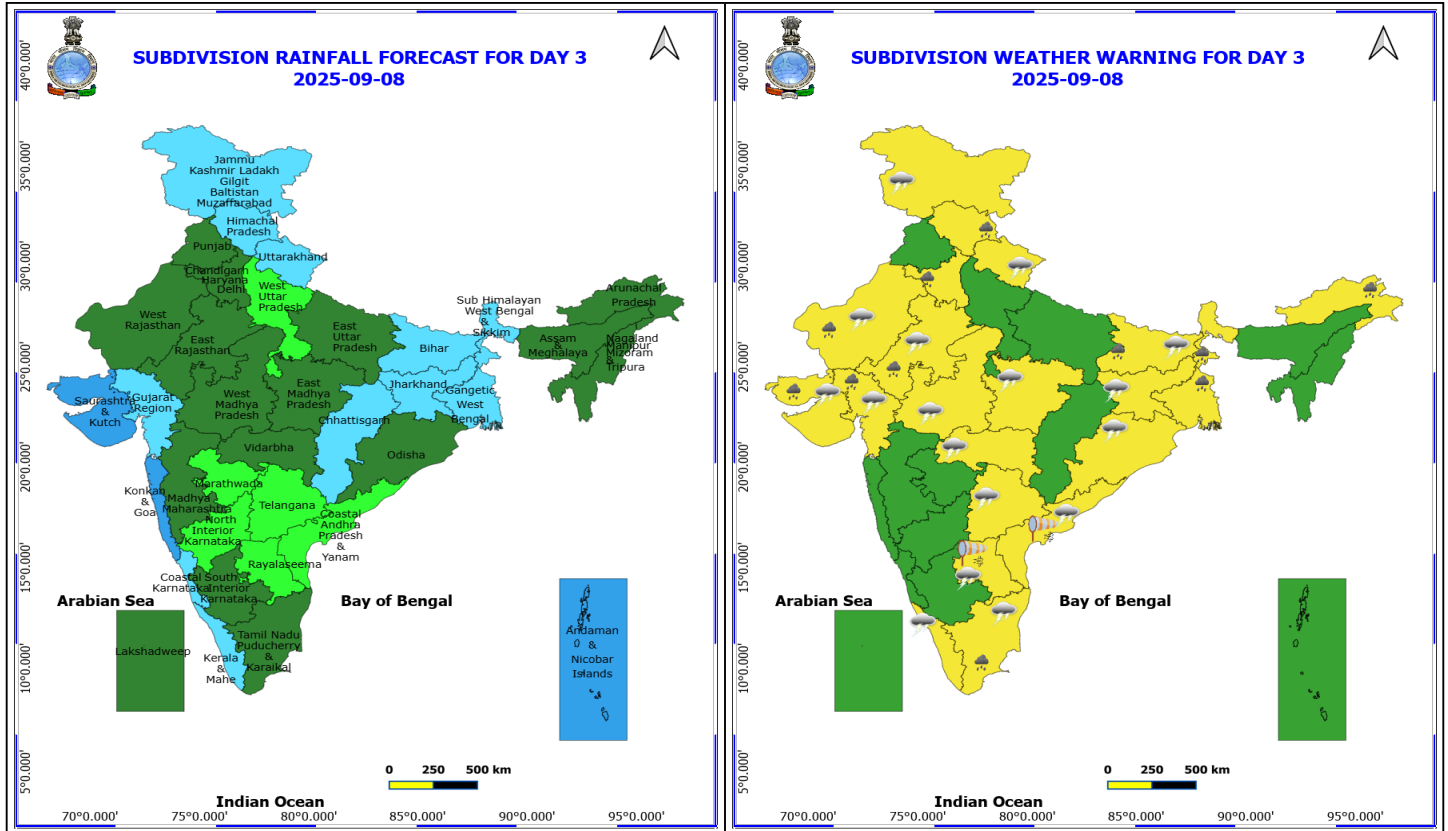
Forecast and warning for any day is valid from 0830 hours IST of day till 0830 hours IST of next day

For more details kindly visit <https://mausam.imd.gov.in> or contact 011-2434-4599

(Service to the nation since 1875)



Gujarat coasts and adjoining sea areas.



8 September (Day 3)

- ❖ **Heavy Rainfall** very likely at isolated places over Arunachal Pradesh, Bihar, Gujarat State, Haryana, Chandigarh & Delhi, Himachal Pradesh, Rajasthan, Tamil Nadu Puducherry & Karaikal and West Bengal & Sikkim.
- ❖ **Thunderstorm accompanied with lightning & gusty winds(30-40kmph)** very likely at isolated places over Bihar, Jammu-Kashmir-Ladakh-Gilgit-Baltistan-Muzaffarabad, Jharkhand, Kerala & Mahe, Odisha, Tamil Nadu Puducherry & Karaikal and Telangana.
- ❖ **Thunderstorm accompanied with Lightning** very likely at isolated places over Andhra Pradesh, Gujarat State, Madhya Pradesh, Rajasthan, Uttarakhand and Vidarbha.
- ❖ **Strong Surface Winds** very likely at isolated places over Andhra Pradesh.

Squally wind with speed reaching 45 kmph to 55 kmph gusting to 65 kmph is likely to prevail along and off Somalia coasts, some parts of southwest & adjoining westcentral Arabian Sea.

Squally weather with wind speed reaching 40 - 50 kmph gusting to 60 kmph likely to prevail along and off Gujarat, Maharashtra coasts; over most parts of north & central Arabian sea, few parts of southwest Bay of Bengal; over few parts of Comorin area.

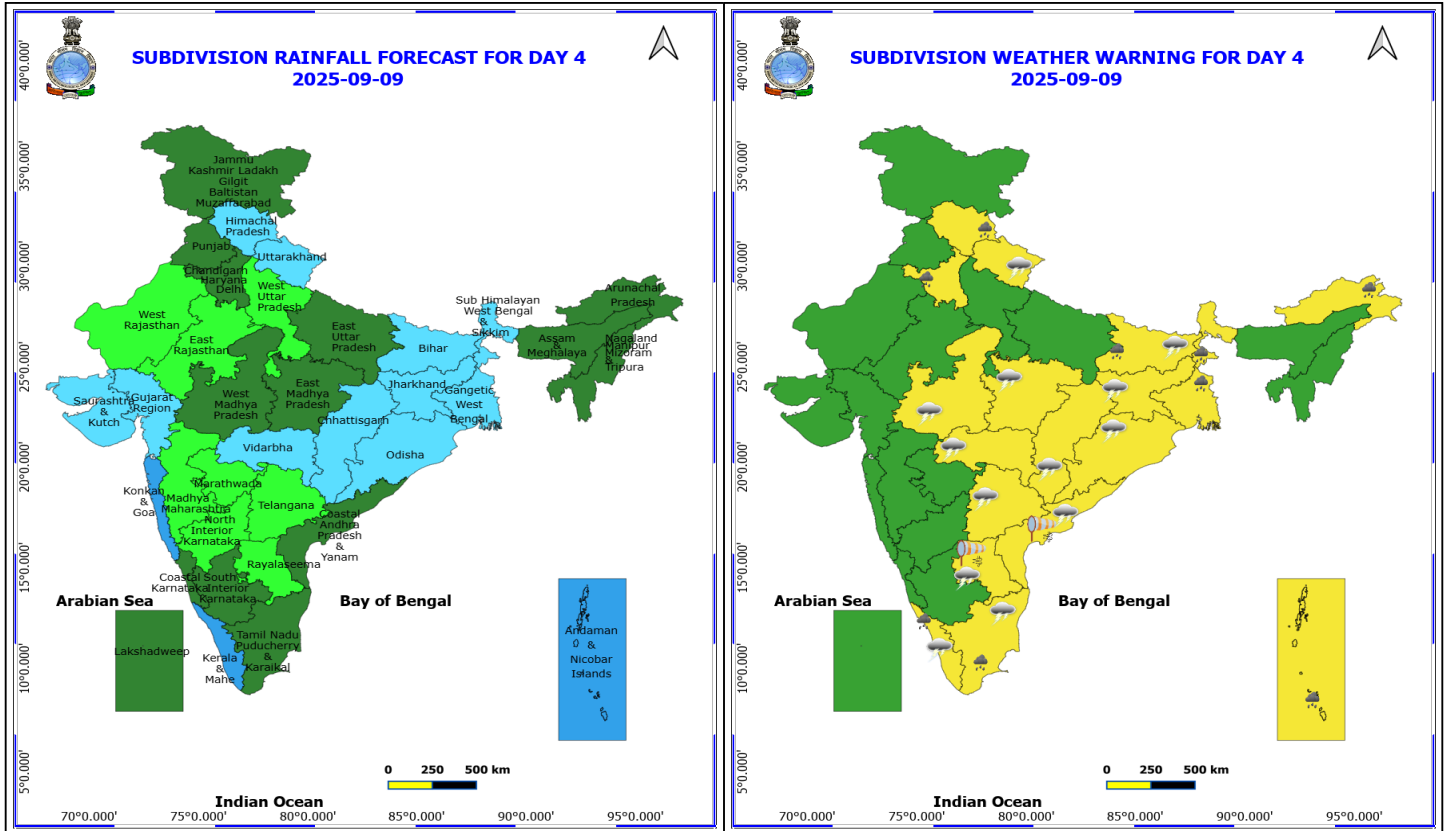
Squally weather with wind speed reaching 45 - 55 kmph gusting to 65 kmph likely to prevail along and off Gujarat, north Maharashtra coasts and adjoining sea areas.

***Red color warning does not mean "Red Alert" Red color warning means "Take Action"**

Forecast and warning for any day is valid from 0830 hours IST of day till 0830 hours IST of next day

For more details kindly visit <https://mausam.imd.gov.in> or contact 011-2434-4599

(Service to the nation since 1875)



9 September (Day 4)

- ❖ **Heavy Rainfall** likely at isolated places over Andaman & Nicobar Islands, Arunachal Pradesh, Bihar, Haryana, Chandigarh & Delhi, Himachal Pradesh, Kerala & Mahe, Tamil Nadu Puducherry & Karaikal and West Bengal & Sikkim.
- ❖ **Thunderstorm accompanied with lightning & gusty winds(30-40kmph)** likely at isolated places over Bihar, Jharkhand, Kerala & Mahe, Odisha, Tamil Nadu Puducherry & Karaikal and Telangana.
- ❖ **Thunderstorm accompanied with Lightning** likely at isolated places over Andhra Pradesh, Chhattisgarh, Madhya Pradesh, Uttarakhand and Vidarbha.
- ❖ **Strong Surface Winds** likely at isolated places over Andhra Pradesh.

Squally wind with speed reaching 45 kmph to 55 kmph gusting to 65 kmph is likely to prevail along and off Somalia and Oman coasts, many parts of westcentral & some parts of southwest Arabian Sea.

Squally weather with wind speed reaching 40 - 50 kmph gusting to 60 kmph likely to prevail along and off Gujarat, Maharashtra coasts, northeast Arabian Sea adjoining some parts of eastcentral, westcentral & northwest Arabian Sea; over Comorin Area and few parts of southwest Bay of Bengal.

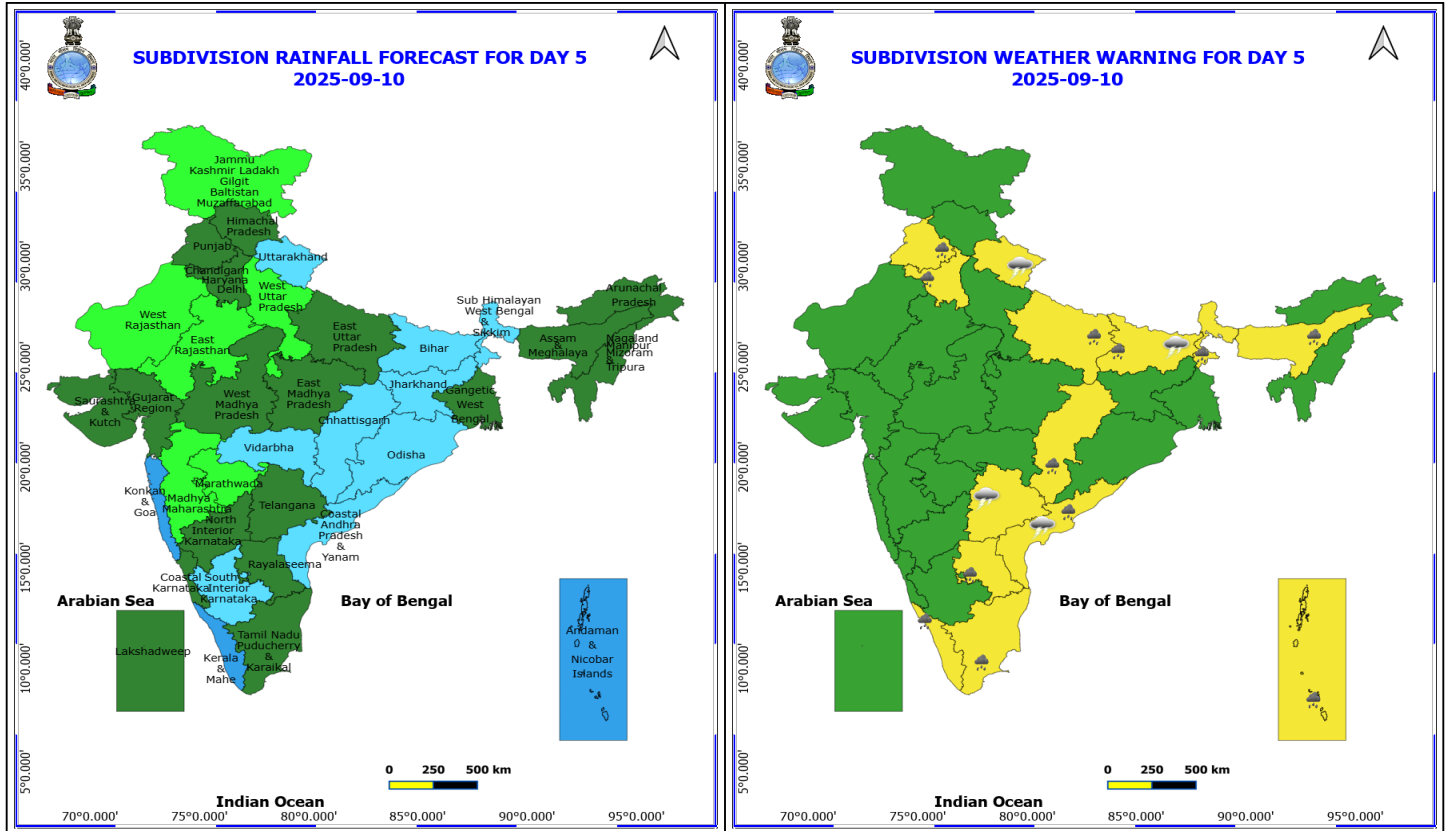
Squally weather with wind speed reaching 45 - 55 kmph gusting to 65 kmph likely to prevail along and off Gujarat, north Maharashtra coasts and adjoining sea Area.

***Red color warning does not mean "Red Alert" Red color warning means "Take Action"**

Forecast and warning for any day is valid from 0830 hours IST of day till 0830 hours IST of next day

For more details kindly visit <https://mausam.imd.gov.in> or contact 011-2434-4599

(Service to the nation since 1875)



10 September (Day 5)

❖ **Heavy Rainfall** likely at isolated places over Andaman & Nicobar Islands, Andhra Pradesh, Assam & Meghalaya, Bihar, Chhattisgarh, East Uttar Pradesh, Haryana, Chandigarh & Delhi, Kerala & Mahe, Punjab, Sub Himalayan West Bengal & Sikkim and Tamil Nadu Puducherry & Karaikal.

❖ **Thunderstorm accompanied with lightning & gusty winds(30-40kmph)** likely at isolated places over Bihar and Telangana.

❖ **Thunderstorm accompanied with Lightning** likely at isolated places over Coastal Andhra Pradesh and Uttarakhand.

Squally wind with speed reaching 45 kmph to 55 kmph gusting to 65 kmph is likely to prevail along and off Somalia and Oman coasts, many parts of southwest & westcentral Arabian Sea.

Squally weather with wind speed reaching 40 - 50 kmph gusting to 60 kmph likely to prevail along and off Gujarat, off north Maharashtra coasts, northeast Arabian Sea adjoining some parts of eastcentral, westcentral & northwest Arabian Sea.

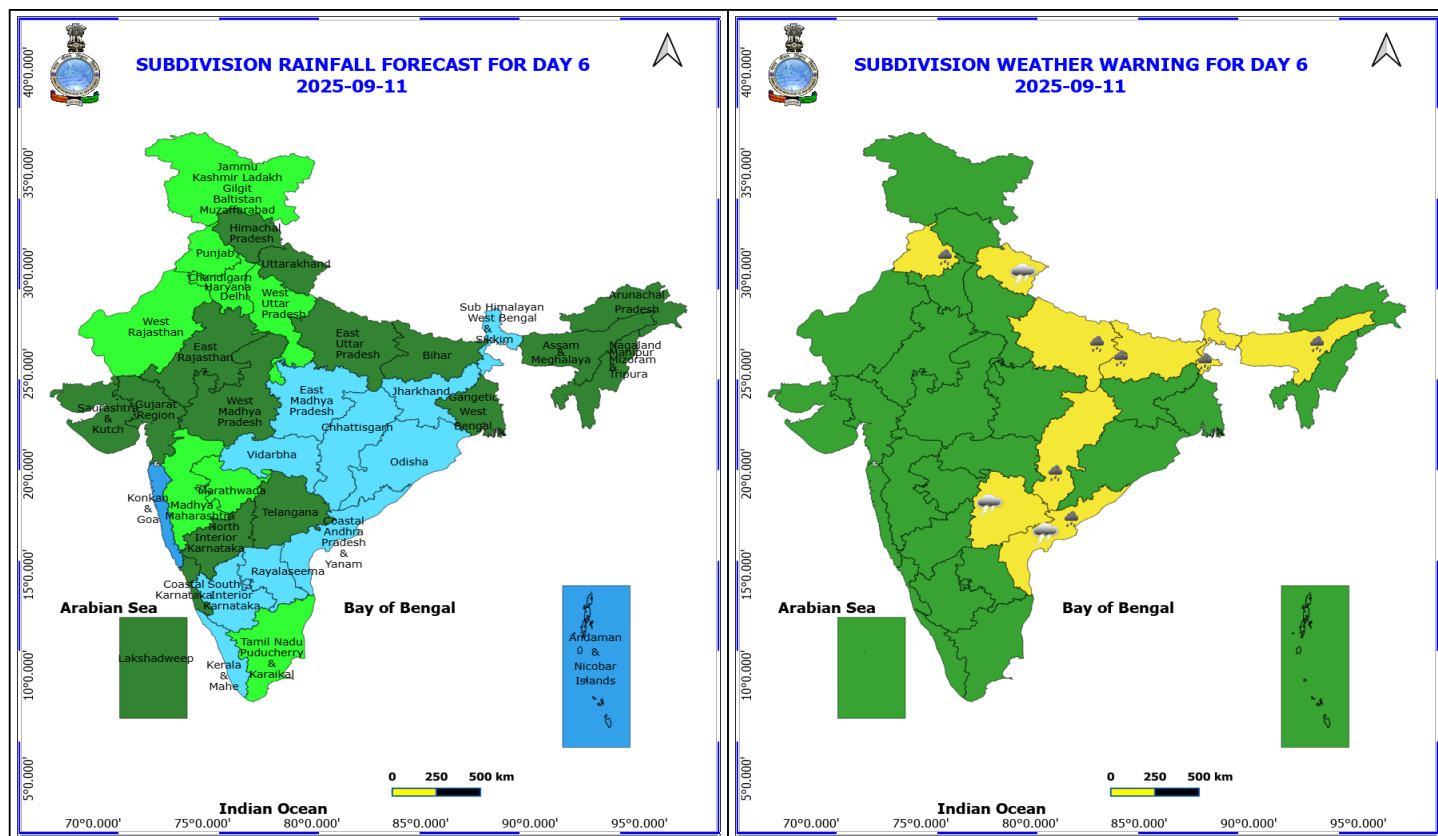
Squally weather with wind speed reaching 45 - 55 kmph gusting to 65 kmph likely to prevail along and off Gujarat coasts and adjoining sea Area.

*Red color warning does not mean "Red Alert" Red color warning means "Take Action"

Forecast and warning for any day is valid from 0830 hours IST of day till 0830 hours IST of next day

For more details kindly visit <https://mausam.imd.gov.in> or contact 011-2434-4599

(Service to the nation since 1875)



11 September (Day 6)

- ❖ **Heavy Rainfall** likely at isolated places over Assam & Meghalaya, Bihar, Chhattisgarh, Coastal Andhra Pradesh, East Uttar Pradesh, Punjab and Sub Himalayan West Bengal & Sikkim.
- ❖ **Thunderstorm accompanied with lightning & gusty winds(30-40kmph)** likely at isolated places over Telangana.
- ❖ **Thunderstorm accompanied with Lightning** likely at isolated places over Coastal Andhra Pradesh and Uttarakhand.

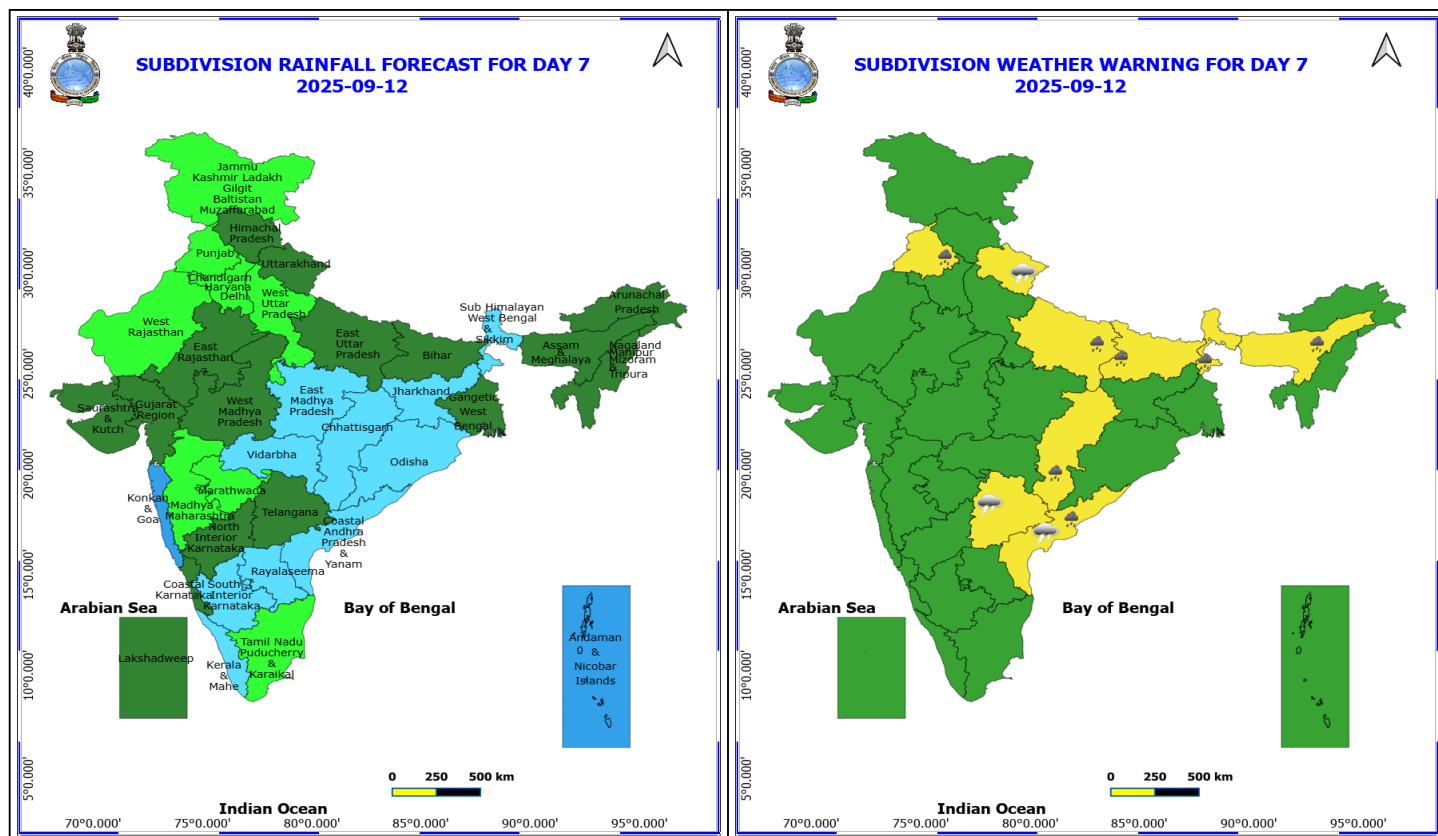
No Fishermen Warning

*Red color warning does not mean "Red Alert" Red color warning means "Take Action"

Forecast and warning for any day is valid from 0830 hours IST of day till 0830 hours IST of next day

For more details kindly visit <https://mausam.imd.gov.in> or contact 011-2434-4599

(Service to the nation since 1875)



12 September (Day 7)

❖ **Heavy Rainfall** likely at isolated places over Andaman & Nicobar Islands, Andhra Pradesh, Assam & Meghalaya, Bihar, Chhattisgarh, East Uttar Pradesh, Haryana, Chandigarh & Delhi, Kerala & Mahe, Punjab, Sub Himalayan West Bengal & Sikkim and Tamil Nadu Puducherry & Karaikal.

❖ **Thunderstorm accompanied with lightning & gusty winds(30-40kmph)** likely at isolated places over Bihar and Telangana.

❖ **Thunderstorm accompanied with Lightning** likely at isolated places over Coastal Andhra Pradesh and Uttarakhand.

No Fishermen Warning

*Red color warning does not mean "Red Alert" Red color warning means "Take Action"

Forecast and warning for any day is valid from 0830 hours IST of day till 0830 hours IST of next day

For more details kindly visit <https://mausam.imd.gov.in> or contact 011-2434-4599

(Service to the nation since 1875)

Flash Flood Warnings

24 hours Outlook for the Flash Flood Risk (FFR) till 0530 IST of 07-09-2025:

Low to Moderate flash flood risk likely over few watersheds & neighbourhoods of following Met Sub-divisions during next 24 hours.

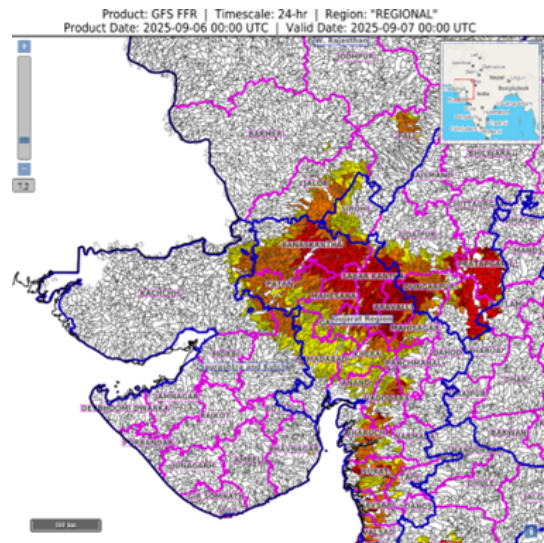
East Rajasthan - Banswara, Dungarpur, Pratapgarh, Sirohi and Udaipur districts.

West Rajasthan – Plai and Jalore , districts.

Gujarat Region – Ahmedabad, Anand, Aravalli, Bharuch, Banaskantha, Dadar & Nagar Haveli, Daman, Gandhinagar, Khera, Mahisagar, Mehsana, Narmada, Navsari, Panchmahal, Patan, Sabar Kantha, Surat, Tapi, Vadodara and Valsad districts.

Saurashtra & Kutch - Kachch, and Surendranagar districts.

Surface runoff/ Inundation may occur at some fully saturated soils & low-lying areas over Area of Concern (AoC) as shown in map due to expected rainfall occurrence in next 24 hours.



***Red color warning does not mean "Red Alert" Red color warning means "Take Action"**

Forecast and warning for any day is valid from 0830 hours IST of day till 0830 hours IST of next day

For more details kindly visit <https://mausam.imd.gov.in> or contact 011-2434-4599

(Service to the nation since 1875)



Table-1

7 Days Rainfall Forecast

S.No.	Subdivision	6- Sep	7- Sep	8- Sep	9- Sep	10- Sep	11- Sep	12- Sep
		Day 1	Day 2	Day 3	Day 4	Day 5	Day 6	Day 7
1	ANDAMAN & NICOBAR ISLANDS	WS	WS	WS	WS	WS	WS	WS
2	ARUNACHAL PRADESH	SCT	SCT	SCT	SCT	SCT	SCT	SCT
3	ASSAM & MEHGHALAYA	FWS	FWS	SCT	SCT	SCT	SCT	SCT
4	N. M. M. & T.	FWS	FWS	SCT	SCT	SCT	SCT	SCT
5	S.H. WEST BENGAL & SIKKIM	SCT	FWS	FWS	FWS	FWS	FWS	FWS
6	GANGETIC WEST BENGAL	SCT	SCT	FWS	FWS	SCT	SCT	SCT
7	ODISHA	FWS	SCT	SCT	FWS	FWS	FWS	FWS
8	JHARKHAND	SCT	SCT	FWS	FWS	FWS	FWS	FWS
9	BIHAR	SCT	SCT	FWS	FWS	FWS	SCT	SCT
10	EAST UTTAR PRADESH	ISOL	ISOL	SCT	SCT	SCT	SCT	SCT
11	WEST UTTAR PRADESH	ISOL	ISOL	ISOL	ISOL	ISOL	ISOL	ISOL
12	UTTARAKHAND	FWS	FWS	FWS	FWS	FWS	SCT	SCT
13	HARYANA, CHD & DELHI	SCT	SCT	SCT	SCT	SCT	ISOL	ISOL
14	PUNJAB	ISOL	SCT	SCT	SCT	SCT	ISOL	ISOL
15	HIMACHAL PRADESH	SCT	SCT	FWS	FWS	SCT	SCT	SCT
16	JAMMU AND KASHMIR AND LADAKH	ISOL	FWS	FWS	SCT	ISOL	ISOL	ISOL
17	WEST RAJASTHAN	FWS	FWS	SCT	ISOL	ISOL	ISOL	ISOL
18	EAST RAJASTHAN	WS	FWS	SCT	ISOL	ISOL	SCT	SCT
19	WEST MADHYA PRADESH	WS	FWS	SCT	SCT	SCT	SCT	SCT
20	EAST MADHYA PRADESH	FWS	FWS	SCT	SCT	SCT	FWS	FWS
21	GUJRAT REGION	WS	WS	FWS	FWS	SCT	SCT	SCT
22	SAURASHTRA & KUTCH	WS	WS	WS	FWS	SCT	SCT	SCT
23	KONKAN & GOA	WS	WS	WS	WS	WS	WS	WS
24	MADHYA MAHARASHTRA	SCT	SCT	SCT	ISOL	ISOL	ISOL	ISOL
25	MARATHWADA	SCT	ISOL	ISOL	ISOL	ISOL	ISOL	ISOL
26	VIDARBHA	SCT	SCT	SCT	FWS	FWS	FWS	FWS
27	CHATTISGARH	SCT	SCT	FWS	FWS	FWS	FWS	FWS
28	COASTAL ANDHRA PRADESH	ISOL	ISOL	ISOL	SCT	FWS	FWS	FWS
29	TELANGANA	ISOL	ISOL	ISOL	ISOL	SCT	SCT	SCT
30	RAYALASEEMA	ISOL	ISOL	ISOL	ISOL	SCT	FWS	FWS
31	TAMILNADU & PUDUCHERRY	ISOL	ISOL	SCT	SCT	SCT	ISOL	ISOL
32	COSTAL KARNATAKA	WS	FWS	FWS	SCT	SCT	SCT	SCT
33	NORTH INTERIOR KARNATAKA	ISOL	ISOL	ISOL	ISOL	SCT	SCT	SCT
34	SOUTH INTERIOR KARNATAKA	SCT	SCT	SCT	SCT	FWS	FWS	FWS
35	KERALA	SCT	SCT	FWS	WS	WS	FWS	FWS
36	LAKSHDWEEP	SCT	SCT	SCT	SCT	SCT	SCT	SCT

Legend	Category	%Stations
WS	Widespread/Most Places	76-100
FWS	Fairly Widespread/Many Places	51-75
SCT	Scattered/ A Few Places	26-50
ISOL	Isolated Places	1-25
DRY	No Rain	0

*Red color warning does not mean "Red Alert" Red color warning means "Take Action"

Forecast and warning for any day is valid from 0830 hours IST of day till 0830 hours IST of next day

For more details kindly visit <https://mausam.imd.gov.in> or contact 011-2434-4599

(Service to the nation since 1875)

Fig. 1: Maximum Temperatures Dated 2025-09-06

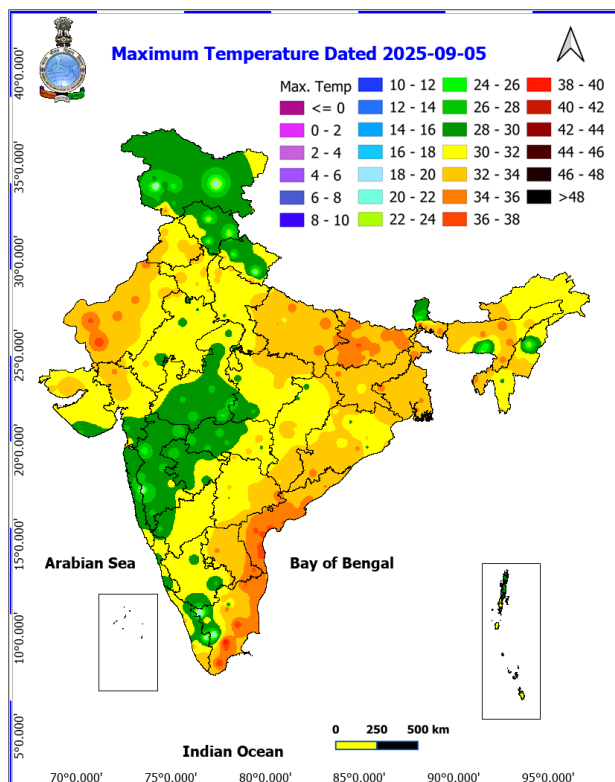


Fig. 2: Departure of Maximum Temp. Dated 2025-09-06

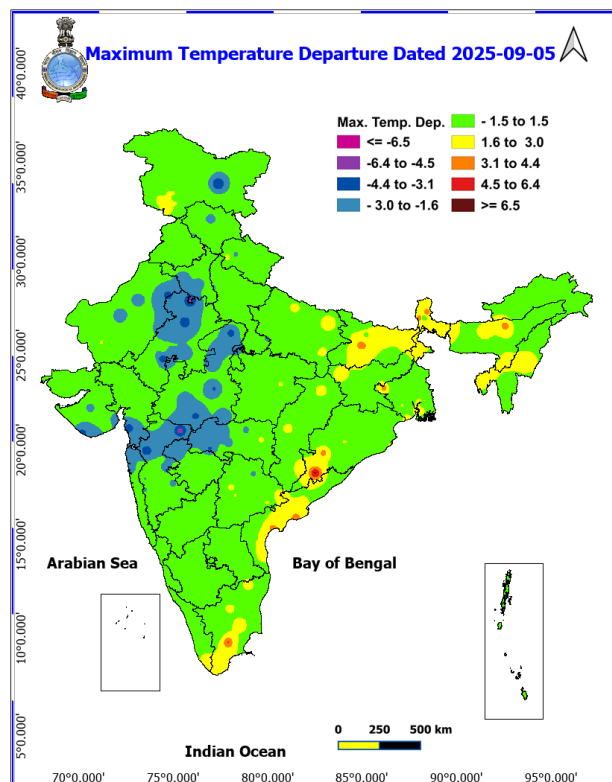


Fig. 3: Minimum Temperatures Dated 2025-09-06

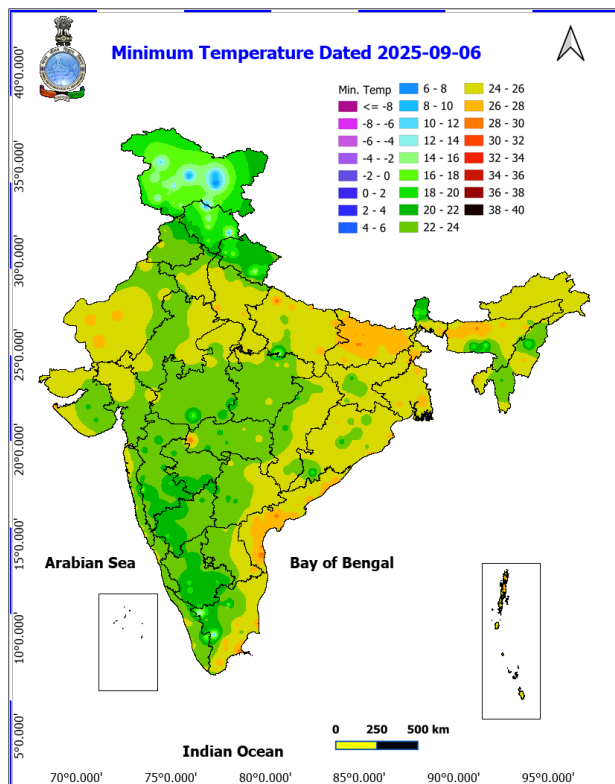
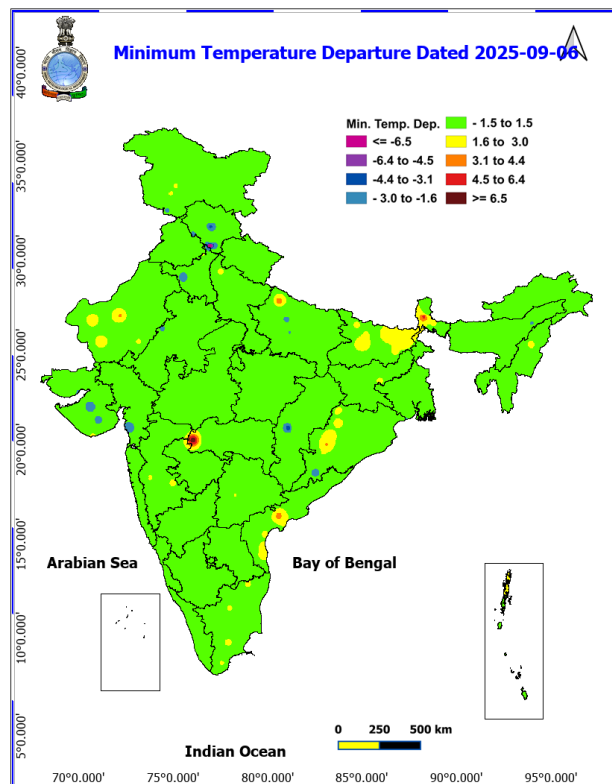
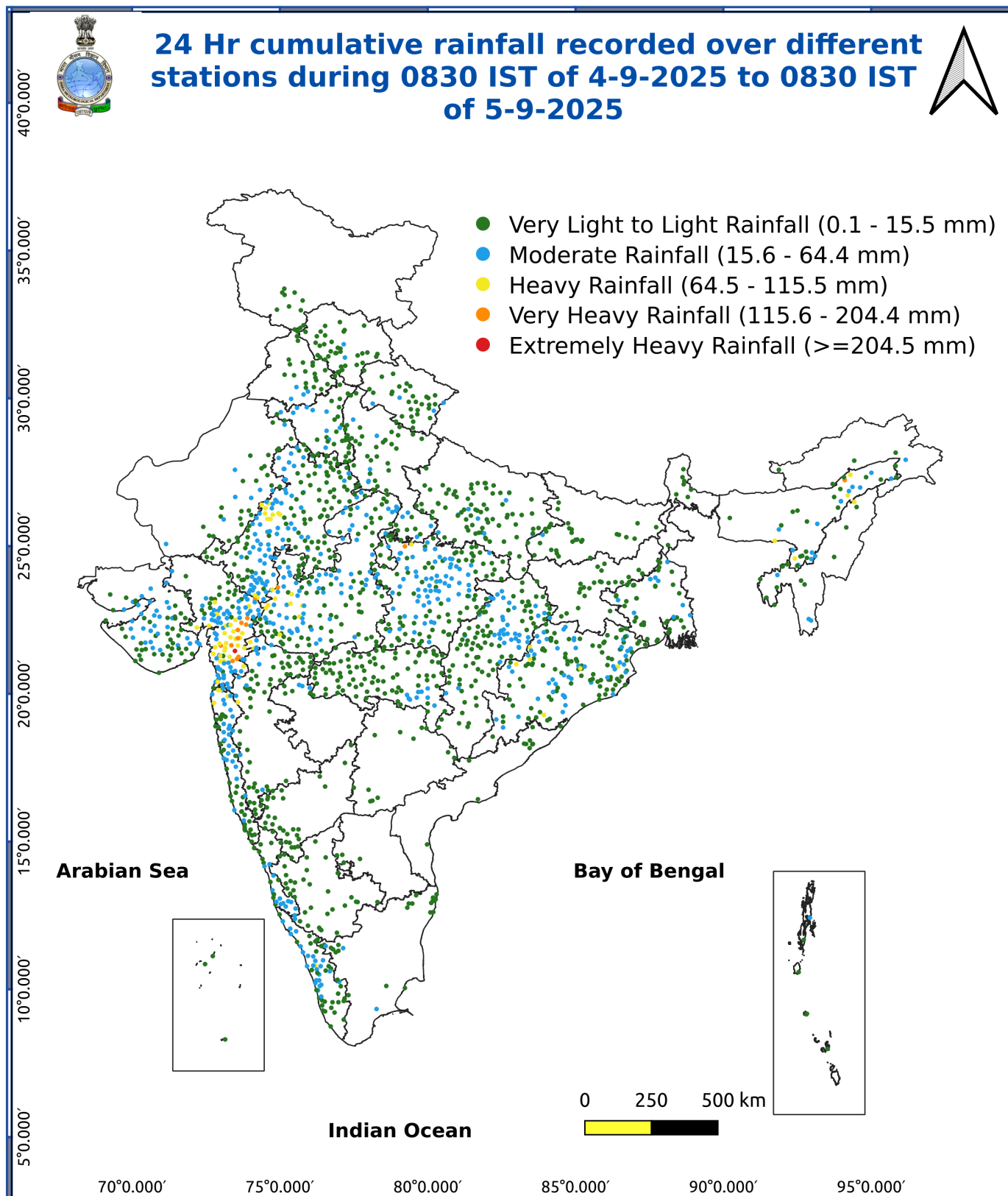


Fig. 4: Departure of Minimum Temp. Dated 2025-09-06





*Red color warning does not mean "Red Alert" Red color warning means "Take Action"

Forecast and warning for any day is valid from 0830 hours IST of day till 0830 hours IST of next day

For more details kindly visit <https://mausam.imd.gov.in> or contact 011-2434-4599

(Service to the nation since 1875)

Impact & Action Suggested due to

Extremely heavy rainfall very likely at isolated places over Gujarat Region, Saurashtra & Kutch on 06th & 07th September with **exceptionally heavy rainfall (≥ 30 cm)** over Gujarat region, East Rajasthan 06th and southwest Rajasthan on 07th September.

Very heavy rainfall over Konkan & Goa, Madhya Maharashtra and West Rajasthan on 06th; East Rajasthan on 07th September.

Impact Expected

Localized Flooding of roads, water logging in low lying areas and closure of underpasses mainly in urban areas of the above region.

Occasional reduction in visibility due to heavy rainfall.

Disruption of traffic in major cities due to water logging in roads leading to increased travel time.

Minor damage to kutcha roads.

Possibilities of damage to vulnerable structure.

Localized Landslides/Mudslides/landslips/mudslips/landsinks/mudsinks.

Damage to horticulture and standing crops in some areas due to inundation.

It may lead to riverine flooding in some river catchments (for riverine flooding please visit Web page of CWC)

Action Suggested

Check for traffic congestion on your route before leaving for your destination.

Follow any traffic advisories that are issued in this regard.

Avoid going to areas that face the water logging problems often.

Avoid staying in vulnerable structure.

Agromet advisories for various parts of the country

Agromet advisories for likely impact of Heavy / Heavy to Very Heavy / Extremely Heavy Rainfall

(Based on the IBF and advisories issued by different AMFUs)

In **Gujarat**, make arrangements to drain out excess rain water from fields of rice, sugarcane, okra, tuber crops and vegetables in **South Gujarat Heavy Rainfall Zone**; rice, cotton, pigeon pea and fruit orchards (banana and mango) in **South Gujarat Zone**; rice, pearl millet, pigeon pea, cotton, soybean, maize and castor in **Middle Gujarat Zone**; in castor, cotton, groundnut, pearl millet, sesame, maize and vegetables in **North Gujarat Zone**; cotton, green gram, black gram, pigeon pea, pearl millet and vegetables in **Bhal and Coastal Zone**; groundnut, cotton and soybean in **North Saurashtra Zone** and groundnut, cotton, soybean, black gram, green gram, sesame and pigeon pea in **South**

***Red color warning does not mean "Red Alert" Red color warning means "Take Action"**

Forecast and warning for any day is valid from 0830 hours IST of day till 0830 hours IST of next day

For more details kindly visit <https://mausam.imd.gov.in> or contact 011-2434-4599

(Service to the nation since 1875)

Sourashtra Zone.

In **Rajasthan**, make proper drainage arrangements in fields of cotton, maize, soybean and pulses in **Sub Humid Southern Plain and Aravali Hill Zone**; fields of soybean, cotton, maize and vegetables in **Southern Humid Plain Zone**; fields of soybean and pigeon pea in **Southeastern Humid Plain Zone** and vegetable nurseries and fields of standing crops such as pearl millet, black gram and sesame in **Flood Prone Eastern Plain Zone**; standing *kharif* crops (green gram and cluster bean) in **Barmer** and **Jalore** district.

In **Madhya Pradesh**, provide adequate drainage in fields of soybean, maize, pulses and vegetables in **Malwa Plateau Zone** and maize, soybean, cotton, black gram and vegetables in **Jhabua Hills Zone**.

In **Maharashtra**, drain out excess water from fields of rice, finger millet, turmeric, groundnut, vegetables and fruit orchards in **Konkan**; from rice and finger millet in *ghat* areas of **Nasik, Pune, Kolhapur** and **Satara districts**; and make arrangements to drain out excess water from cotton, groundnut, maize, soybean, vegetables and orchards in Dhule, Nandurbar and Jalgaon districts of **Madhya Maharashtra**.

In **Odisha**, make necessary arrangements to drain out excess rain water from fields of rice, maize, black gram and vegetables in **North Central Plateau Zone**.

Livestock / Fishery

Keep the animals inside the shed during heavy rainfall and provide them balanced feed.

Store feed and fodder in a safe place to prevent spoilage.

Construct an outlet with proper netting around the ponds to drain out excess water, thereby preventing fish from escaping in case of overflow.

Agromet advisories for likely impact of Thunderstorm / Gusty Winds / Squally Winds

(Based on the IBF and advisories issued by different AMFUs)

Provide mechanical support to horticultural crops and staking or support to vegetables and young fruit plants / fruit-bearing plants to avoid lodging due to strong winds.

LEGENDS

- 1 अंडमान और निकोबार द्वीप समुह
- 2 अरुणाचल प्रदेश
- 3 असम और मेघालय
- 4 नागालैंड मनीपुर मीजोरम और त्रिपुरा
- 5 उप हिमालय पश्चिम बंगाल एवं सिक्किम
- 6 पश्चिम बंगाल
- 7 ओडिसा
- 8 झारखंड
- 9 बिहार
- 10 पूर्वी उत्तर प्रदेश
- 11 पश्चिम उत्तर प्रदेश
- 12 उत्तराखंड
- 13 हरियाणा चंडीगढ़ एवं दिल्ली
- 14 पंजाब
- 15 हिमाचल प्रदेश
- 16 जम्मू एवं कश्मीर एवं लद्दाख
- 17 पश्चिम राजस्थान
- 18 पूर्वी राजस्थान
- 19 पश्चिम मध्य प्रदेश
- 20 पूर्वी मध्य प्रदेश
- 21 गुजरात क्षेत्र
- 22 सौराष्ट्र एवं कच्छ
- 23 कोंकण एवं गोवा
- 24 मध्य महाराष्ट्र
- 25 मराठावाड़ा
- 26 विदर्भ
- 27 छत्तीसगढ़
- 28 तटीय आंध्र प्रदेश एवं यनम
- 29 तेलंगाना
- 30 रायलसीमा
- 31 तमिलनाडु, पुदुचेरी एवं कराईकल
- 32 तटिय कर्नाटक
- 33 आंतरिक उत्तरी कर्नाटक
- 34 आंतरिक दक्षिणी कर्नाटक
- 35 केरल एवं माहे
- 36 लक्षद्वीप



1. Andaman & Nicobar Islands
2. Arunachal Pradesh
3. Assam & Meghalaya
4. Nagaland, Manipur, Mizoram & Tripura
5. Sub-Himalayan West Bengal & Sikkim
6. Gangetic West Bengal
7. Orissa
8. Jharkhand
9. Bihar
10. East Uttar Pradesh
11. West Uttar Pradesh
12. Uttarakhand
13. Haryana, Chd & Delhi
14. Punjab
15. Himachal Pradesh
16. Jammu & Kashmir and Ladakh
17. West Rajasthan
18. East Rajasthan
19. West Madhya Pradesh
20. East Madhya Pradesh
21. Gujarat
22. Saurashtra
23. Konkan & Goa
24. Madhya Maharashtra
25. Marathawada
26. Vidharbha
27. Chhattisgarh
28. Coastal Andhra Pradesh & Yanam
29. Telangana
30. Rayalaseema
31. Tamilnadu, Puducherry & Karaikal
32. Coastal Karnataka
33. North Interior Karnataka
34. South Interior Karnataka
35. Kerala & Mahe
36. Lakshadweep

SPATIAL DISTRIBUTION (% of Stations reporting)

% Stations	Category	% Stations	Category
76-100	Widespread (WS/Most Places)	26-50	Scattered (SCT/ A Few Places)
51-75	Fairly Widespread (FWS/ Many Places)	1-25	Isolated (ISOL)

Subdivision Colour

- NO WARNING
- WATCH (BE UPDATED)
- ALERT (BE PREPARED TO TAKE ACTION)
- WARNING (TAKE ACTION)

Probabilistic Forecast

Terms	Probability of Occurrence (%)
Unlikely	< 25
Likely	25 - 50
Very Likely	50 - 75
Most Likely	> 75

-  Heavy Rain

 Thunderstorm & Lightning

 Strong surface winds

 Cold Wave

 Hot & Humid

 Very Heavy Rain

 Hailstorm

 Heat Wave

 Cold Day

 Extremely Heavy Rain

 Dust Storm

 Hot Day

 Ground Frost

 Heavy Snow

 Dust Raising Winds

 Warm Night

 Fog

*Red color warning does not mean "Red Alert" Red color warning means "Take Action"

Forecast and warning for any day is valid from 0830 hours IST of day till 0830 hours IST of next day

For more details kindly visit <https://mausam.imd.gov.in> or contact 011-2434-4599

(Service to the nation since 1875)

LEGENDS

WARNING

WARNING (TAKE ACTION)
ALERT (BE PREPARED)
WATCH (BE UPDATED)
NO WARNING (NO ACTION)

Probabilistic Forecast

Terms	Probability of Occurrence (%)
Unlikely	< 25
Likely	25 - 50
Very Likely	50 - 75
Most Likely	> 75



Heavy: 64.5 to 115.5 mm/cm *
Very Heavy: 115.6 to 204.4 mm/cm *
Extremely Heavy: > 204.4 mm/cm *



When maximum temperature of a station reaches $\geq 40^{\circ}\text{C}$ for plains and $\geq 30^{\circ}\text{C}$ for hilly regions
(a) Based on Departure from normal

Heat Wave: Maximum Temperature Departure from normal 4.5°C to 6.4°C .
Severe Heat Wave: Maximum Temperature Departure from normal $\geq 6.5^{\circ}\text{C}$

(b). Based on Actual maximum temperature

Heat Wave: When actual maximum temperature $\geq 45^{\circ}\text{C}$.
Severe Heat Wave: When actual maximum temperature $\geq 47^{\circ}\text{C}$

(c). Criteria for heat wave for coastal stations

When maximum temperature departure is $> 4.5^{\circ}\text{C}$ from normal. Heat Wave may be described provided maximum temperature $\geq 37^{\circ}\text{C}$



When maximum temperature remains 40°C

Warm Night: When minimum temperature departure 4.5°C to 6.4°C .
Severe Warm Night: When minimum temperature departure $> 6.4^{\circ}\text{C}$.



When minimum temperature of a station $\leq 10^{\circ}\text{C}$ for plains and $\leq 0^{\circ}\text{C}$ for hilly regions.

(a). Based on departure

Cold Wave: Minimum Temperature Departure from normal -4.5°C to -6.4°C .
Severe Cold Wave: Minimum Temperature Departure from normal $\leq -6.5^{\circ}\text{C}$

(b) Based on actual Minimum Temperature (for Plains only)

Cold Wave: When Minimum Temperature is $\leq 4.0^{\circ}\text{C}$
Severe Cold Wave: When Minimum Temperature is $\leq 2.0^{\circ}\text{C}$

(c) For Coastal Stations

When Minimum Temperature departure is $\leq -4.5^{\circ}\text{C}$ & actual Minimum Temperature is $\leq 15^{\circ}\text{C}$



When minimum temperature of a station $\leq 10^{\circ}\text{C}$ for plains and $\leq 0^{\circ}\text{C}$ for hilly regions
Based on departure

Cold Day: Maximum Temperature Departure from normal -4.5°C to -6.4°C .
Severe Cold Day: Maximum Temperature Departure from normal $\leq -6.5^{\circ}\text{C}$



Phenomenon of small droplets suspended in air and the horizontal visibility $< 1\text{km}$

Moderate Fog: When the visibility between 500-200 metres
Dense Fog: when the visibility between 50-200 metres
Very Dense Fog: when the visibility < 50 metres



Sudden electrical discharges manifested by a flash of light (Lightning) and a sharp rumbling sound (thunder)



An ensemble of particles of dust or sand energetically lifted to great heights by a strong and turbulent wind.



Ice deposits on ground

Air temperature $\leq 4^{\circ}\text{C}$ (over Plains)



A strong wind that rises suddenly, lasts for at least 1 minute.

Moderate: Wind speed 52-61 kmph
Severe: Wind speed 62-87 kmph
Very Severe: Wind speed > 87 kmph



Effect of various waves in the sea over specific area

Rough to very rough: Wind speed 41-62 kmph (22-33 knots) & Wave height 2.5-6 metre
High to very high: Wind speed 63-117 kmph (34-63 knots) & Wave height 6-14 metre
Phenomenal: Wind speed > 117 kmph (> 63 knots) & Wave height > 14 metre



Cyclonic Storm: Wind speed 62-87 kmph (34-47 knots)

Severe Cyclonic Storm: Wind speed 88-117 kmph (48-63 knots)
Very Severe Cyclonic Storm: Wind speed 118-165 kmph (64-89 knots)
Extremely Severe Cyclonic Storm: Wind speed 166-220 kmph (90-119 knots)
Super Cyclone Storm: Wind speed > 220 kmph (> 119 knots)

*Red color warning does not mean "Red Alert" Red color warning means "Take Action"

Forecast and warning for any day is valid from 0830 hours IST of day till 0830 hours IST of next day

For more details kindly visit <https://mausam.imd.gov.in> or contact 011-2434-4599

(Service to the nation since 1875)