

Sunday, June 1, 2025
Time of Issue: 1340 hours IST
(MID-DAY)

ALL INDIA WEATHER SUMMARY AND FORECAST BULLETIN

Significant Weather Features:

Weather Forecast and Warnings

Northeast India:

- ❖ Light/moderate rainfall at most/many places likely to continue over northeast India during next 7 days with heavy rainfall during next 5 days
- ❖ Isolated **heavy to very heavy rainfall** very likely over Arunachal Pradesh on 01st, Assam & Meghalaya during 01st-03rd, Manipur, Mizoram & Tripura on 01st & 02nd with **isolated extremely heavy rainfall** also likely over Assam & Meghalaya, Manipur, Mizoram & Tripura on 01st June.

East & Central India:

- ❖ Light/moderate rainfall at most/many places likely to continue over Sub-Himalayan West Bengal & Sikkim during next 7 days with **isolated heavy falls** on 1st and 02nd June and very **heavy falls on 1st June**.
- ❖ **Isolated to scattered** light/moderate rainfall accompanied with **thunderstorm, lightning & gusty winds speed reaching 40-50 kmph** likely over Madhya Pradesh, Vidarbha, Chhattisgarh, Bihar, Odisha during 01st-04th and over Gangetic West Bengal, Jharkhand on 01st June.

Northwest India:

- ❖ Light/moderate rainfall at many/some places accompanied with **thunderstorm, lightning & gusty winds speed reaching 40-50 kmph** likely over Jammu-Kashmir-Ladakh-Gilgit-Baltistan-Muzaffarabad, Himachal Pradesh, Uttarakhand, Punjab, Haryana Chandigarh & Delhi; light/moderate rainfall at some/isolated places over Uttar Pradesh, Rajasthan during 01st-05th June.
- ❖ **Thundersquall wind speed reaching 50-60 kmph gusting to 70 kmph** likely over Jammu-Kashmir on 02nd & 03rd, Himachal Pradesh on 03rd & 04th, Himachal Pradesh, West Uttar Pradesh on 03rd, East Rajasthan on 02nd & 03rd June.
- ❖ **Isolated heavy rainfall** also likely over Uttarakhand during 01st-04th June and over Punjab, Haryana on 3rd June.
- ❖ **Dust storm** also very likely at isolated places over West Rajasthan during 02nd-04th June.

West India:

- ❖ Light/moderate rainfall at many places likely over Konkan & Goa with **isolated heavy rainfall** likely over Goa on 01st June.

South Peninsular India:

- ❖ Light/moderate rainfall at many places with **thunderstorm, lightning & gusty winds speed reaching 40-50 kmph over Kerala & Mahe, Coastal Karnataka during 01st-04th June**.
- ❖ Light/moderate rainfall at some places accompanied with **thunderstorm, lightning & gusty winds speed reaching 40-50 kmph** over Coastal Andhra Pradesh, Rayalaseema, Telangana during 01st-04th June; Interior Karnataka on 04th & 05th June.
- ❖ **Isolated heavy rainfall** also likely over Kerala & Mahe during 01st-04th June, Coastal Karnataka on 01st June.

Maximum Temperature Forecast:

- ❖ No significant change in maximum temperatures likely over Northwest India during next 2 days; gradual fall by 3-4°C during subsequent next 3 days.
- ❖ Gradual rise by 2-4°C in maximum temperatures over East India during next 4 days and no large change thereafter.
- ❖ No significant change in maximum temperatures likely over rest parts of the country.

Hot & Humid warnings:

- ❖ **Hot & humid weather** is likely to prevail over Odisha on 04th & 05th June.

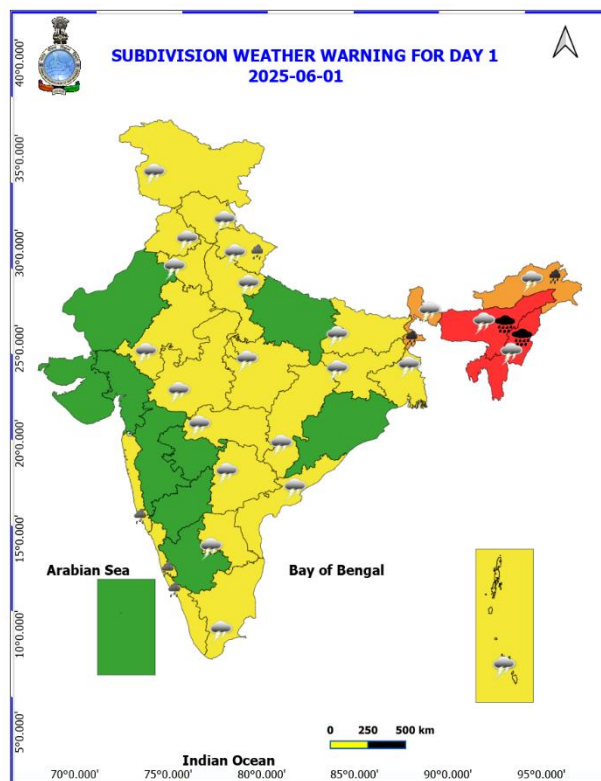
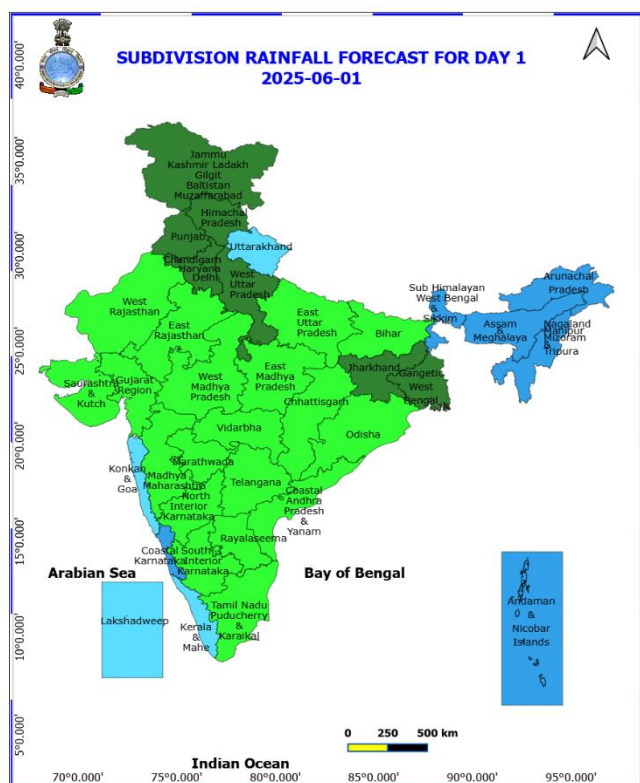
Main Weather Observations:

- ❖ **Rainfall distribution** (from 0830 hours IST of yesterday to 0830 hours IST of today): **at most places** over Andaman & Nicobar Islands, Arunachal Pradesh, Assam & Meghalaya, Nagaland, Manipur, Mizoram & Tripura, Sub Himalayan West Bengal & Sikkim, Jammu-Kashmir/Ladakh-Gilgit-Baltistan-Muzaffarabad, Coastal Karnataka and Kerala & Mahe; **at many places** over Konkan & Goa and Lakshadweep; **at a few places** over Gangetic West Bengal, Odisha, Jharkhand, Haryana-Chandigarh-Delhi, Punjab, Himachal Pradesh and Chhattisgarh; **at isolated places** over Bihar, East Uttar Pradesh, West Uttar Pradesh, Uttarakhand, West Rajasthan, East Rajasthan, West Madhya Pradesh, East Madhya Pradesh, Gujarat Region, Madhya Maharashtra, Marathwada, Vidarbha, Coastal Andhra Pradesh & Yanam, Telangana, Tamil Nadu, Puducherry & Karaikal, North Interior Karnataka and South Interior Karnataka; **Dry** over Rayalaseema and Saurashtra & Kutch.
- ❖ **Significant rainfall recorded (in cm)** (from 0830 hours IST of yesterday to 0830 hours IST of today): **Assam & Meghalaya**: Silchar (dist Cachar) 41; Karimganj (dist Sribhumi) 35; A P Ghat (dist Cachar) 32; Matijuri (dist Hailakandi) 30; Lakhimpur (dist Cachar) 26; B P Ghat (dist Sribhumi), Amraghat (dist Cachar) 23 Each; Haflong (dist Dima Hasao) 18; Mawkyrwat (dist South West Khasi Hills) 16; Raha ARG (dist Nagaon) 15; Cherrapunji (dist East Khasi Hills), Lakhimpur ARG (dist Cachar), Khliehriat (dist East Jaintia Hills) 12 Each; Mawsynram (dist East Khasi Hills), Dholai (dist Cachar), Cherrapunji(rkm) (dist East Khasi Hills) 10 Each; Shella (dist East Khasi Hills), Kokrajhar (dist Kokrajhar), Mawphlang (dist East Khasi Hills) 9 Each; Panbari (dist Chirang), Aie Nh Xing (dist Bongaigaon) 7 Each; **Nagaland, Manipur, Mizoram & Tripura**: Budhjongnagar ARG (dist West Tripura) 20; Arundhutinagar (dist West Tripura), Kailashahar AP (dist Unakoti) 19 Each; Kailashahar AWS (dist Unakoti) 18; Jirania ARG (dist West Tripura) 17; Khowai AWS (dist Khowai) 16; Dm Office ARG (dist West Tripura), Kadamtala ARG (dist North Tripura), Khowai (dist Khowai) 14 Each; Lembuchhera (dist West Tripura) 13; Sabroom (dist South Tripura) 12; Chottabekra (dist Imphal West), Kamalpur (dist Dhalai), Agartala AP (dist West Tripura) 11 Each; Dharmanagar/panisagar (dist North Tripura), Aizawl (dist Aizawl), Kolasib ARG (dist Kolasib), Senapati (dist Senapati), Kvk South (dist South Tripura), Met Agartala AWS (dist West Tripura), Bagafa (dist South Tripura) 10 Each; Belonia (dist South Tripura) 9; Lamseng ARG (dist Imphal West), Ashapara AWS (dist North Tripura) 8 Each; Lengpui (dist Aizawl) 7; **Sub Himalayan West Bengal & Sikkim**: Bhutanghat (dist Alipurduar) 11; Buxaduar (dist Alipurduar), Kumargram Tea Estate (dist Alipurduar), Newlands Tea Garden (dist Alipurduar), Sankos Tea Estate (dist Alipurduar) 9 Each; Alipurduar PTO (dist Alipurduar), Nagarkata (dist Jalpaiguri), Toorsa Tea Garden (dist Alipurduar) 8 Each; Chengmari/Diana (dist Jalpaiguri), Indong T.e. (dist Jalpaiguri) 7 Each; **Odisha**: Biridi (dist Jagatsinghpur) 9; **Kerala & Mahe**: Kayamkulam (dist Alapuzha) 7;
- ❖ **Heavy Rainfall observed** (from 0830 hours IST of yesterday to 0830 hours IST of today): **Extremely heavy rain** at isolated places over Assam & Meghalaya. **Heavy to very heavy rain** at isolated places over Assam & Meghalaya and Nagaland, Manipur, Mizoram & Tripura. **Heavy rain** at isolated places over Arunachal Pradesh, Sub Himalayan West Bengal & Sikkim, Odisha and Kerala & Mahe.
- ❖ **Minimum Temperature Departures (as on 01-06-2025)**: Minimum Temperature are **markedly above normal (> 5.1°C)** at few places over Arunachal Pradesh, Punjab and East Madhya Pradesh; at isolated places over Assam & Meghalaya, Bihar, East Uttar Pradesh, West Uttar Pradesh, Himachal Pradesh, West Rajasthan, Gujarat Region and Saurashtra & Kutch. **appreciably above normal (3.1°C to 5.0°C)** at few places over Sub Himalayan West Bengal & Sikkim; at isolated places over Andaman & Nicobar Islands, Gangetic West Bengal, Uttarakhand, West Madhya Pradesh and Madhya Maharashtra. **above normal (1.6°C to 3.0°C)** at many places over Coastal Karnataka; at few places over Rayalaseema and Lakshadweep; at isolated places over Haryana-Chandigarh-Delhi, East Rajasthan, Konkan & Goa, Coastal Andhra Pradesh & Yanam and Tamil Nadu, Puducherry & Karaikal. **near normal (-1.5°C to 1.5°C)** at many places over Jammu-Kashmir/Ladakh-Gilgit-Baltistan-Muzaffarabad; at most places over Nagaland, Manipur, Mizoram & Tripura, Odisha, South Interior Karnataka and Kerala & Mahe; at few places over Jharkhand, Telangana and North Interior Karnataka; at isolated places over Vidarbha and Chhattisgarh. (Fig.4). Today, **the lowest minimum temperature** of 21.2°C is reported at Pendra Road (Chhattisgarh) over the Plains of India.
- ❖ **Maximum Temperature Departures (as on 31-05-2025)**: Maximum Temperatures were **markedly above normal (> 5.1°C)** at isolated places over West Uttar Pradesh and Punjab. **appreciably above normal (3.1°C to 5.0°C)** at isolated places over Sub Himalayan West Bengal & Sikkim, East Uttar Pradesh, Himachal Pradesh and East Madhya Pradesh. **above normal (1.6°C to 3.0°C)** at few places over Uttarakhand; at isolated places over Andaman & Nicobar Islands, Assam & Meghalaya, Gangetic West Bengal, Bihar, West Rajasthan and Tamil Nadu, Puducherry & Karaikal. **near normal (-1.5°C to 1.5°C)** at many places over Nagaland, Manipur, Mizoram & Tripura, Haryana-Chandigarh-Delhi and Konkan & Goa; at most places over Saurashtra & Kutch, Coastal Karnataka and Lakshadweep; at few places over Odisha, East Rajasthan and Gujarat Region; at isolated places over West Madhya Pradesh, Madhya Maharashtra, Coastal Andhra Pradesh & Yanam, Rayalaseema, North Interior Karnataka, South Interior Karnataka and Kerala & Mahe (Fig.2). Yesterday, **the highest maximum temperature of 44.2°C was reported at Sri Ganganagar (West Rajasthan)**.

Meteorological Analysis (Based on 0830 hours IST)

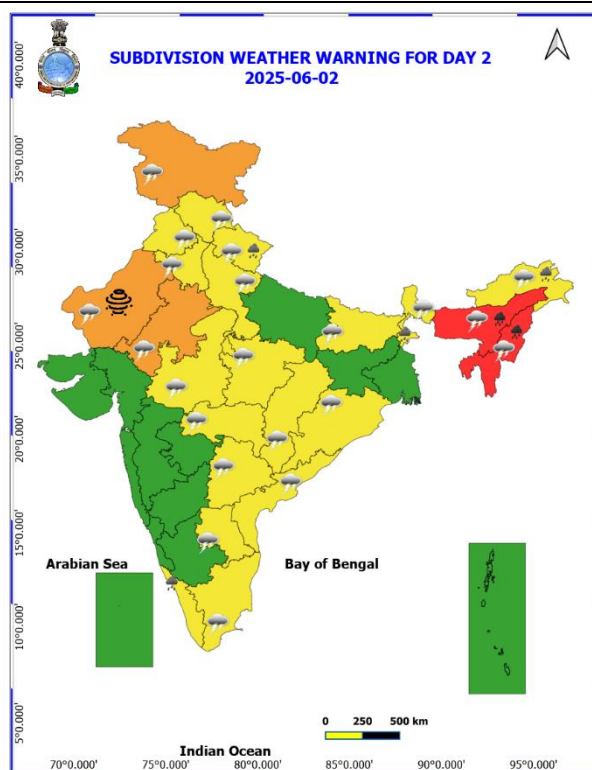
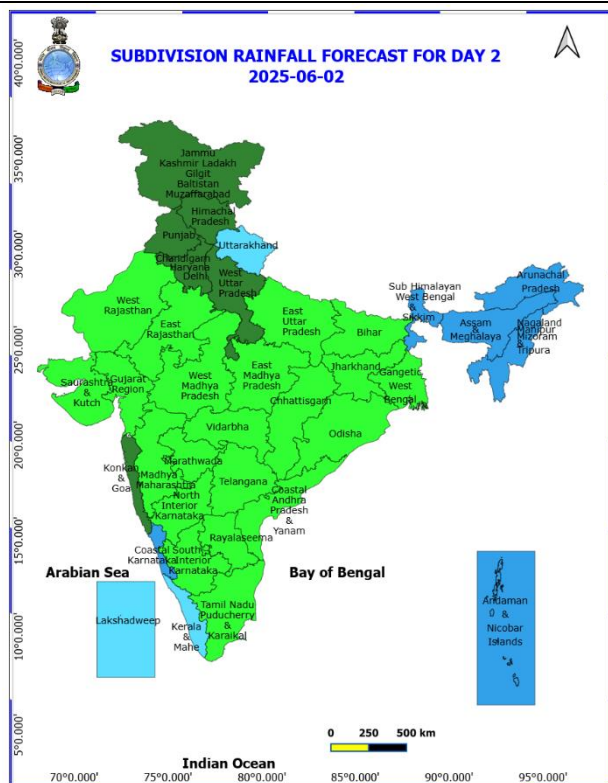
- ❖ The Northern Limit of Monsoon continues to pass through 17.0°N/55°E, 17.5°N/60°E, 18°N/65°E, 18.5°N/70°E, Mumbai, Ahilyanagar, Adilabad, Bhawanipatna, Puri, Sandhead Island, 23.5°N/89.5°E, Balurghat, 30°N/85°E.
- ❖ The **Western disturbance** as **cyclonic circulation** over north Pakistan & adjoining Jammu and north Punjab at 3.1 km above mean sea level with a trough aloft in middle & upper tropospheric levels with its axis at 5.8 km above mean sea level roughly along Long. 74°E to the north of Lat. 32°N persists.
- ❖ The **upper air cyclonic circulation** over central Pakistan at 1.5 km above mean sea level persists.
- ❖ The **upper air cyclonic circulation** over Haryana at 0.9 km above mean sea level persists.
- ❖ The **trough** from central Pakistan to the above **cyclonic circulation** over Haryana across north Rajasthan at 0.9 km above mean sea level persists.
- ❖ The **upper air cyclonic circulation** over northeast Assam at 0.9 km above mean sea level persists.
- ❖ A **trough** at mean sea level runs from central parts of East Uttar Pradesh to Arunachal Pradesh across central parts of Bihar, Sub-Himalayan West Bengal, central parts of Assam.
- ❖ A **north-south trough** runs roughly along Long. 90°E to the north of Lat. 20°N at 1.5 km above mean sea level.
- ❖ The **trough** from northeast Uttar Pradesh to east Vidarbha at 0.9 km above mean sea level has become less marked.

Weather Forecast & Warnings for next 7 days (Upto 0830 hours IST of 08th June, 2025)



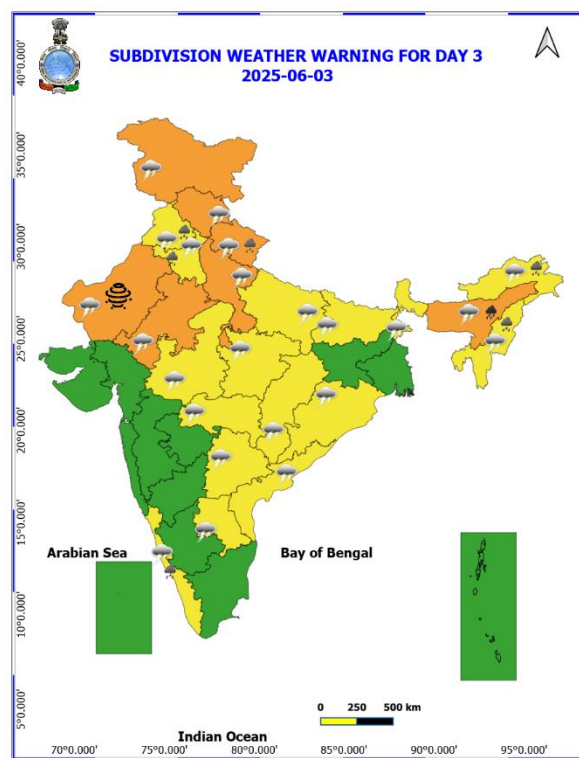
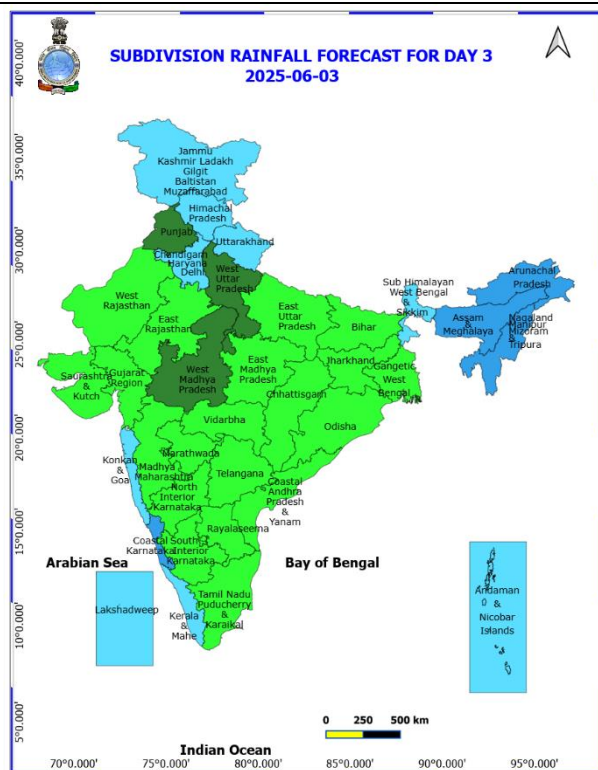
01st June (Day 1)

- ❖ **Heavy to Very Heavy Rainfall with isolated Extremely Heavy Rainfall** very likely at isolated places over Assam & Meghalaya and Manipur, Mizoram and Tripura.
- ❖ **Heavy to Very Heavy Rainfall** very likely at isolated places over Arunachal Pradesh and Sub Himalayan West Bengal & Sikkim.
- ❖ **Heavy Rainfall** very likely at isolated places over Kerala & Mahe, Coastal Karnataka, Nagaland, Goa and Uttarakhand.
- ❖ **Thunderstorm accompanied with lightning & gusty winds(40-50kmph)** very likely at isolated places over Andhra Pradesh, Chhattisgarh, East Rajasthan, Haryana, Chandigarh & Delhi, Madhya Pradesh, Nagaland, Manipur, Mizoram and Tripura, Punjab and Uttarakhand.
- ❖ **Thunderstorm accompanied with lightning & gusty winds(30-40kmph)** very likely at isolated places over Andaman & Nicobar Islands, Assam & Meghalaya, Bihar, Himachal Pradesh, Jharkhand, Telangana, West Bengal & Sikkim and West Uttar Pradesh.
- ❖ **Thunderstorm accompanied with Lightning** very likely at isolated places over Arunachal Pradesh, Jammu-Kashmir-Ladakh-Gilgit-Baltistan-Muzaffarabad, Tamil Nadu Puducherry & Karaikal and Vidarbha.
- ❖ **Squally wind with speed 45 kmph to 55 kmph gusting to 65 kmph** likely to prevail along and off Somalia coast and some parts of southwest Arabian Sea & westcentral Arabian Sea, along and off Gujarat coast and adjoining northeast Arabian Sea. **Squally weather with wind speed 35 kmph to 45 kmph gusting to 55 kmph** prevailing over entire south Arabian Sea, many parts of central Arabian Sea; along and off Kerala, Karnataka coasts, over Lakshadweep area, Maldives area, Comorin area, Gulf of Mannar, along and off Sri Lanka coast, off Tamil Nadu, Andhra Pradesh, coasts, over most parts of south, central Bay of Bengal & southern parts of northeast Bay of Bengal. Fisherman are not advised not to venture into the sea.



02nd June (Day 2)

- ❖ **Heavy to Very Heavy Rainfall** very likely at isolated places over Assam & Meghalaya and Nagaland, Manipur, Mizoram and Tripura.
- ❖ **Heavy Rainfall** very likely at isolated places over Arunachal Pradesh, Kerala & Mahe, Sub Himalayan West Bengal & Sikkim and Uttarakhand.
- ❖ **Thundersquall with wind speed reaching(50-60kmph)** very likely at isolated places over Jammu-Kashmir-Ladakh-Gilgit-Baltistan-Muzaffarabad and Rajasthan.
- ❖ **Thunderstorm accompanied with lightning & gusty winds(40-50kmph)** very likely at isolated places over Chhattisgarh, Haryana, Chandigarh & Delhi, Madhya Pradesh, Punjab and Uttarakhand.
- ❖ **Thunderstorm accompanied with lightning & gusty winds(30-40kmph)** very likely at isolated places over Andhra Pradesh, Bihar, Himachal Pradesh, Nagaland, Manipur, Mizoram and Tripura, Odisha, Telangana and West Uttar Pradesh.
- ❖ **Thunderstorm accompanied with Lightning** very likely at isolated places over Arunachal Pradesh, Assam & Meghalaya, Sub Himalayan West Bengal & Sikkim, Tamil Nadu Puducherry & Karaikal and Vidarbha.
- ❖ **Dust Storm** very likely at isolated places over West Rajasthan.
- ❖ **Squally wind with speed 45 kmph to 55 kmph gusting to 65 kmph** likely to prevail along and off Somalia coast and some parts of southwest Arabian Sea & westcentral Arabian Sea, off north Gujarat coast and some parts of northeast Arabian Sea. **Squally weather with wind speed 35 kmph to 45 kmph gusting to 55 kmph** prevailing over many parts of southwest and westcentral Arabian Sea, some parts of eastcentral and southeast Arabian Sea, Gulf of Mannar and adjoining Comorin area, over many parts of central Bay of Bengal and adjoining parts of south and north Bay of Bengal. Fisherman are not advised not to venture into the sea.



03rd June (Day 3)

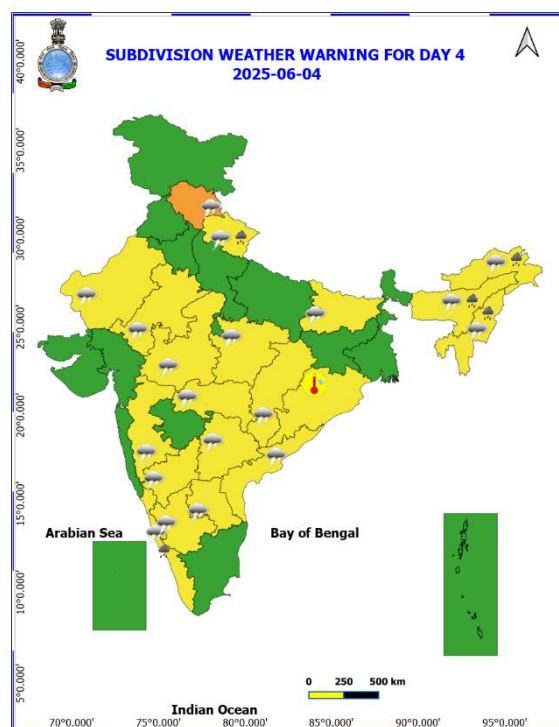
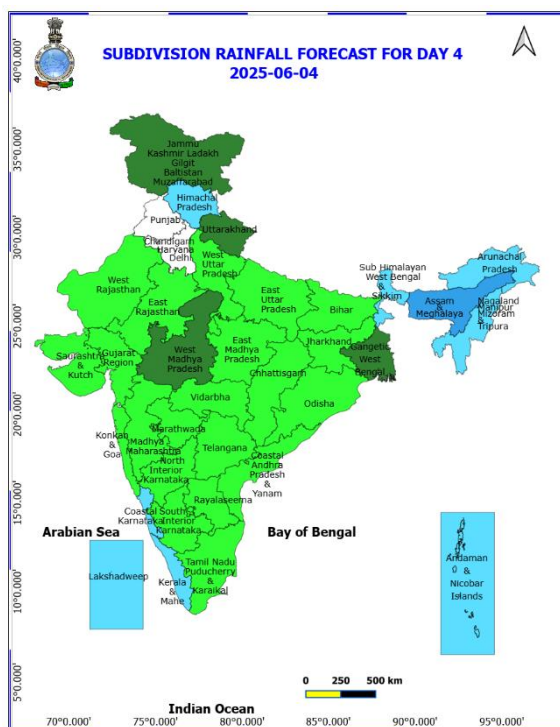
- ❖ **Heavy to Very Heavy Rainfall** very likely at isolated places over Assam & Meghalaya.
- ❖ **Heavy Rainfall** very likely at isolated places over Arunachal Pradesh, Haryana, Chandigarh & Delhi, Kerala & Mahe, Nagaland, Manipur, Mizoram and Tripura, Punjab and Uttarakhand.
- ❖ **Thundersquall with wind speed reaching(50-60kmph)** very likely at isolated places over Himachal Pradesh, Jammu-Kashmir-Ladakh-Gilgit-Baltistan-Muzaffarabad, Rajasthan, Uttarakhand, West Madhya Pradesh and West Uttar Pradesh.
- ❖ **Thunderstorm accompanied with lightning & gusty winds(40-50kmph)** very likely at isolated places over Chhattisgarh, East Madhya Pradesh, Haryana, Chandigarh & Delhi, Punjab and Vidarbha.
- ❖ **Thunderstorm accompanied with lightning & gusty winds(30-40kmph)** very likely at isolated places over Andhra Pradesh, Bihar, East Uttar Pradesh, Odisha and Telangana.
- ❖ **Thunderstorm accompanied with Lightning** very likely at isolated places over Arunachal Pradesh, Assam & Meghalaya, Costal Karnataka, Nagaland, Manipur, Mizoram and Tripura and Sub Himalayan West Bengal & Sikkim.
- ❖ **Dust Storm** very likely at isolated places over West Rajasthan.
- ❖ **Squally wind with speed 45 kmph to 55 kmph gusting to 65 kmph** likely to prevail along and off Somalia coast and some parts of southwest Arabian Sea & westcentral Arabian Sea. **Squally weather with wind speed 35 kmph to 45 kmph gusting to 55 kmph** prevailing over many parts of southwest and westcentral Arabian Sea, some parts of eastcentral and southeast Arabian Sea, some southern parts of northeast Arabian Sea, Gulf of Mannar and adjoining Comorin area, over many parts of central Bay of Bengal and adjoining parts of south and north Bay of Bengal.

* Red colour warning does not mean "Red Alert", Red colour warning means "Take Action".

Forecast and Warning for any day is valid from 0830 hours IST of day till 0830 hours IST of next day.

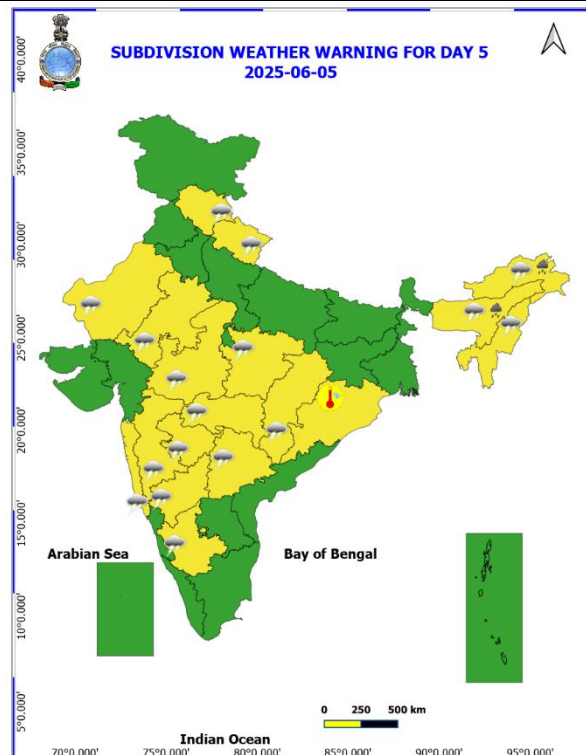
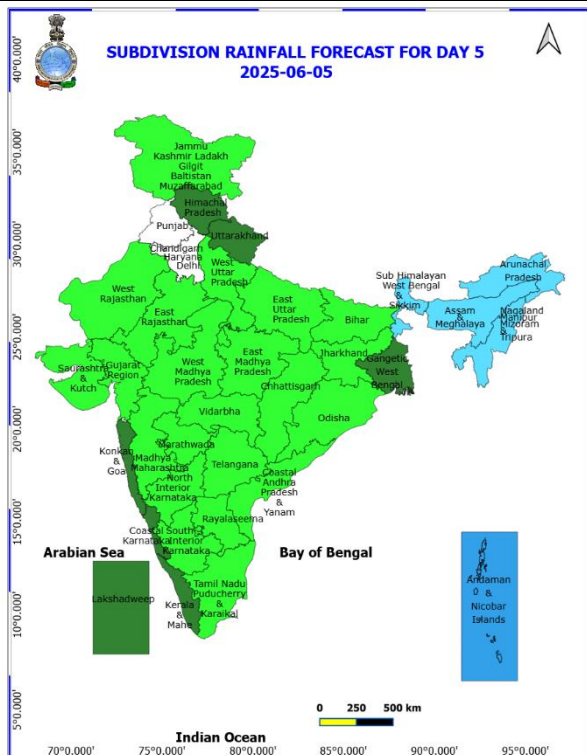
For more details, kindly visit <https://mausam.imd.gov.in> or contact: 011-2434-4599

(Service to the Nation since 1875)



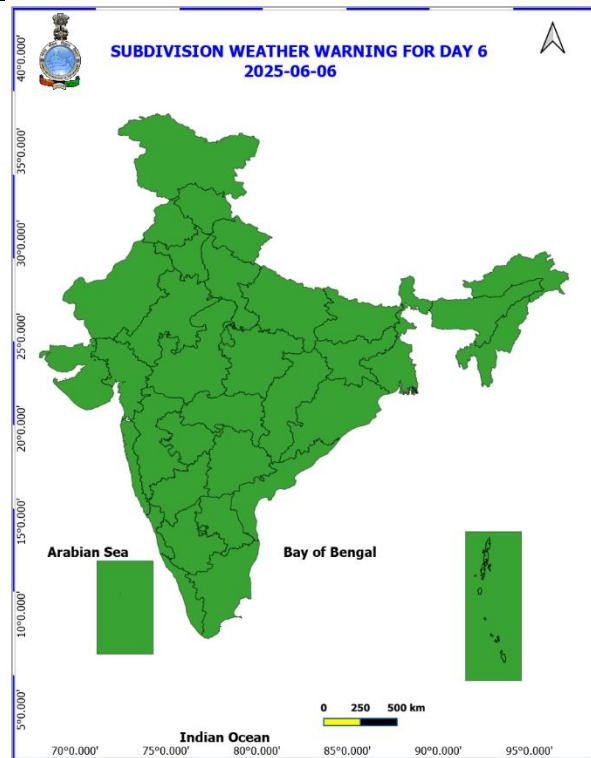
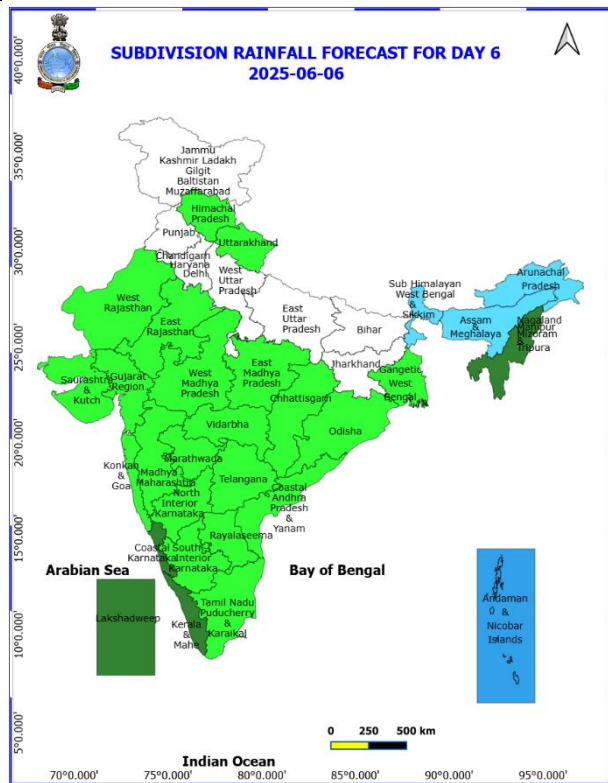
04th June (Day 4)

- ❖ **Heavy Rainfall** likely at isolated places over Arunachal Pradesh, Assam & Meghalaya, Kerala & Mahe, Nagaland, Manipur, Mizoram and Tripura and Uttarakhand.
- ❖ **Thundersquall with wind speed reaching(50-60kmph)** likely at isolated places over Himachal Pradesh and West Madhya Pradesh.
- ❖ **Thunderstorm accompanied with lightning & gusty winds(40-50kmph)** likely at isolated places over Chhattisgarh, East Madhya Pradesh, Rajasthan and Vidarbha.
- ❖ **Thunderstorm accompanied with lightning & gusty winds(30-40kmph)** likely at isolated places over Andhra Pradesh, Bihar, Madhya Maharashtra, Telangana and Uttarakhand.
- ❖ **Thunderstorm accompanied with Lightning** likely at isolated places over Arunachal Pradesh, Assam & Meghalaya, Costal Karnataka, Interior Karnataka and Nagaland, Manipur, Mizoram and Tripura.
- ❖ **Hot and Humid weather** likely at isolated places over Odisha.
- ❖ **Squally wind with speed 45 kmph to 55 kmph gusting to 65 kmph** likely to prevail along and off Somalia coast and some parts of southwest Arabian Sea & westcentral Arabian Sea. **Squally weather with wind speed 35 kmph to 45 kmph gusting to 55 kmph** prevailing over northern parts of southwest and westcentral Arabian Sea, some parts of eastcentral and few parts of southeast Arabian Sea, some southern parts of northeast Arabian Sea, Gulf of Mannar and adjoining Comorin area, over most parts of central Bay of Bengal and adjoining parts of north Bay of Bengal. Fisherman are not advised not to venture into the sea.



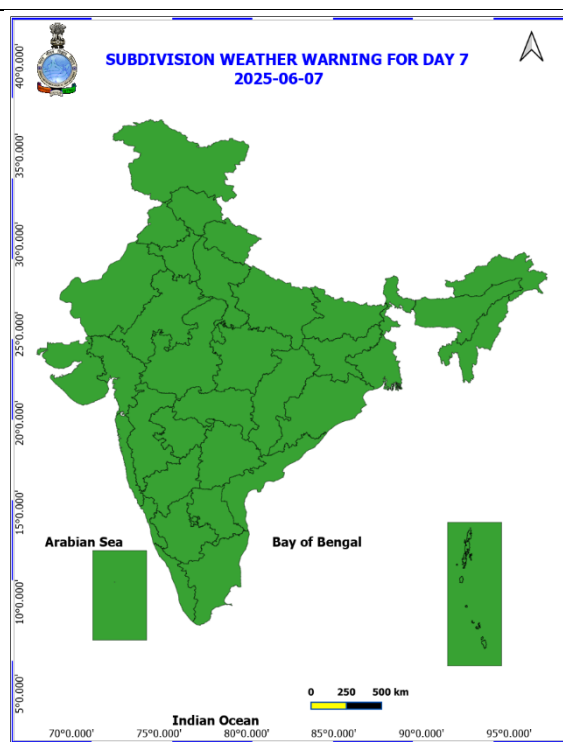
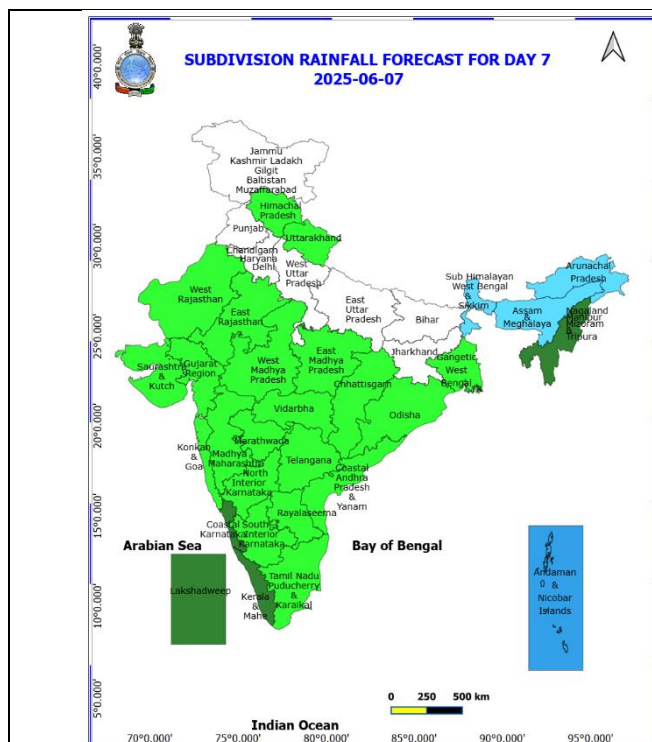
05th June (Day 5)

- ❖ **Heavy Rainfall** likely at isolated places over Arunachal Pradesh and Assam & Meghalaya.
- ❖ **Thunderstorm accompanied with lightning & gusty winds(40-50kmph)** likely at isolated places over Chhattisgarh, Madhya Pradesh and Vidarbha.
- ❖ **Thunderstorm accompanied with lightning & gusty winds(30-40kmph)** likely at isolated places over Himachal Pradesh, Konkan & Goa, Madhya Maharashtra, Marathwada, Rajasthan, Telangana and Uttarakhand.
- ❖ **Thunderstorm accompanied with Lightning** likely at isolated places over Arunachal Pradesh, Assam & Meghalaya, Interior Karnataka and Nagaland, Manipur, Mizoram and Tripura.
- ❖ **Hot and Humid weather** likely at isolated places over Odisha.
- ❖ **Squally wind with speed 45 kmph to 55 kmph gusting to 65 kmph** likely to prevail along and off Somalia coast and few parts of southwest Arabian Sea & westcentral Arabian Sea. **Squally weather with wind speed 35 kmph to 45 kmph gusting to 55 kmph** prevailing over some parts of southwest Arabian Sea, many parts of westcentral Arabian Sea & adjoining parts of eastcentral Arabian Sea, Gulf of Mannar and adjoining Comorin area, over most parts of westcentral Bay of Bengal and adjoining parts of eastcentral Bay of Bengal.



06th June (Day 6)

❖ **No Warning.**



07th June (Day 7)

❖ No Warning.

Weather Outlook for subsequent 3 days (During 08th June- 10th June, 2025)

- ❖ **Fairly widespread to widespread** rainfall activity likely over Northeast India, Sub-Himalayan West Bengal & Sikkim, Andaman & Nicobar Islands, Lakshadweep, Konkan & Goa, Marathwada, Coastal Karnataka, Telangana, Rayalaseema and Kerala & Mahe.
- ❖ **Isolated to scattered rainfall** likely over Jammu-Kashmir-Ladakh-Gilgit-Baltistan-Muzaffargarh, Odisha, south Chhattisgarh, Vidarbha, West Madhya Pradesh, Madhya Maharashtra, Interior Karnataka, East Uttar Pradesh, Bihar and Jharkhand.

- Action may be taken based on **ORANGE AND RED COLOUR** warnings.
- Vulnerable regions likely urban and hilly areas action may be initiated for heavy rainfall warning.
- As the lead period increases forecast accuracy decreases.

Fig. 1: Maximum Temperatures

Fig. 2: Departure of Maximum Temperatures

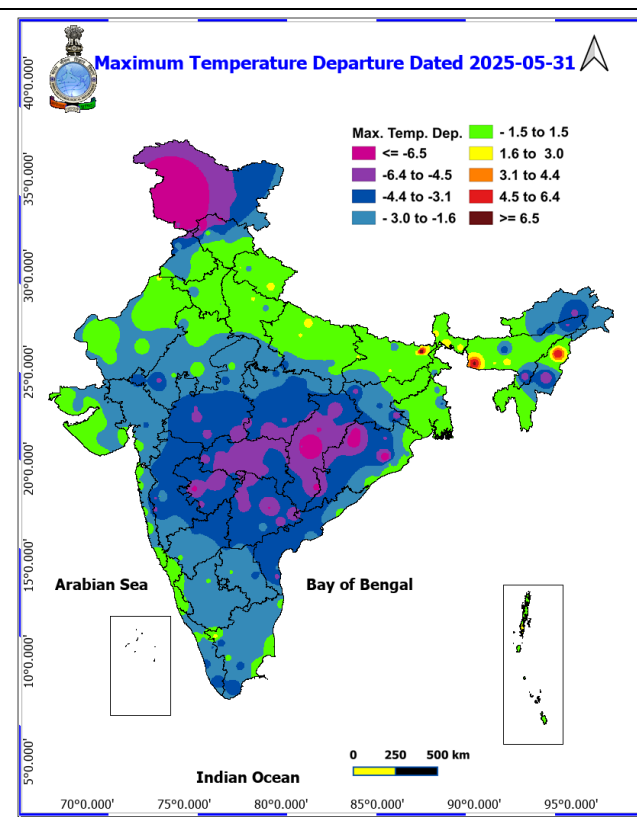
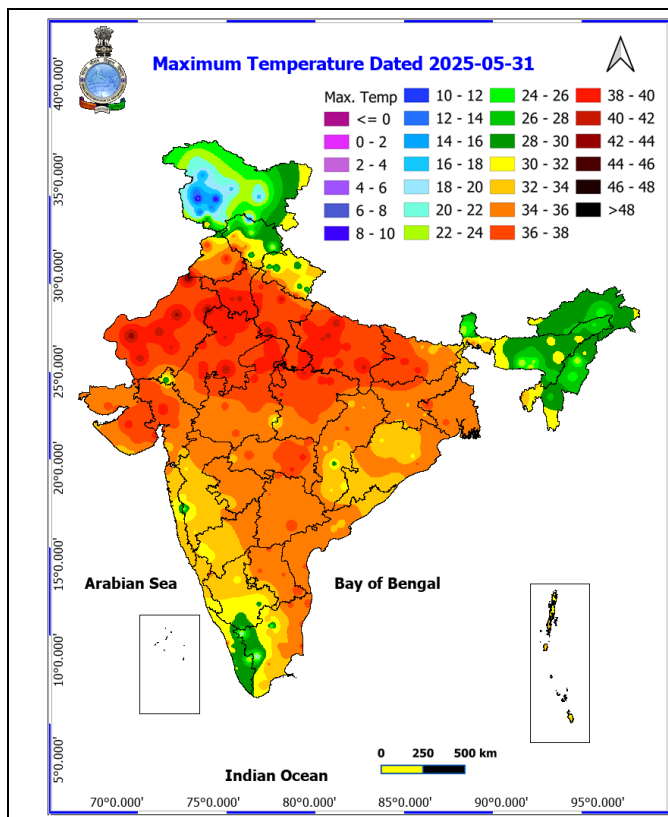


Fig. 3: Minimum Temperatures

Fig. 4: Departure of Minimum Temperatures

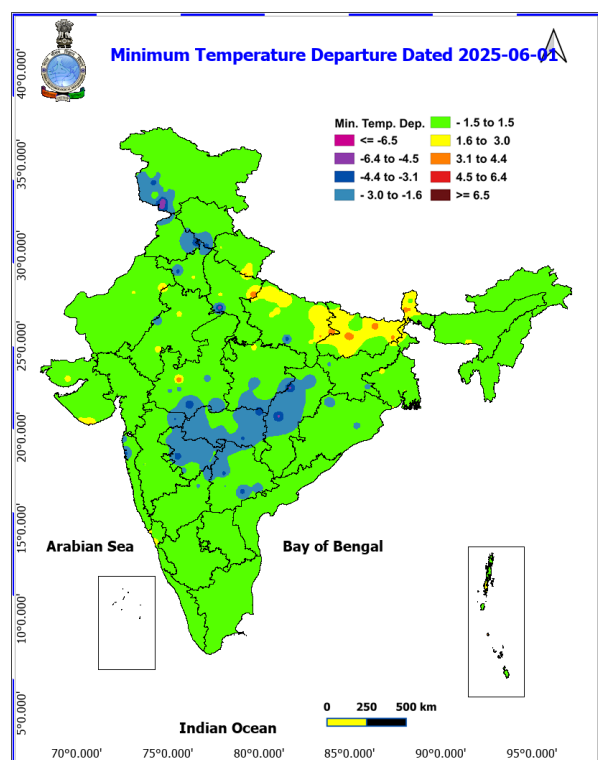
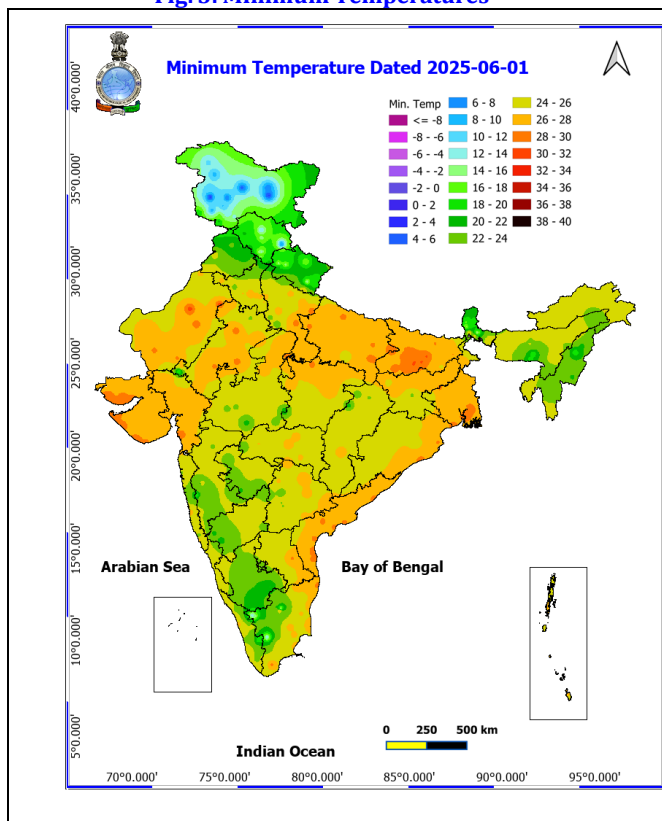


Fig. 5: Advance of Southwest Monsoon 2025

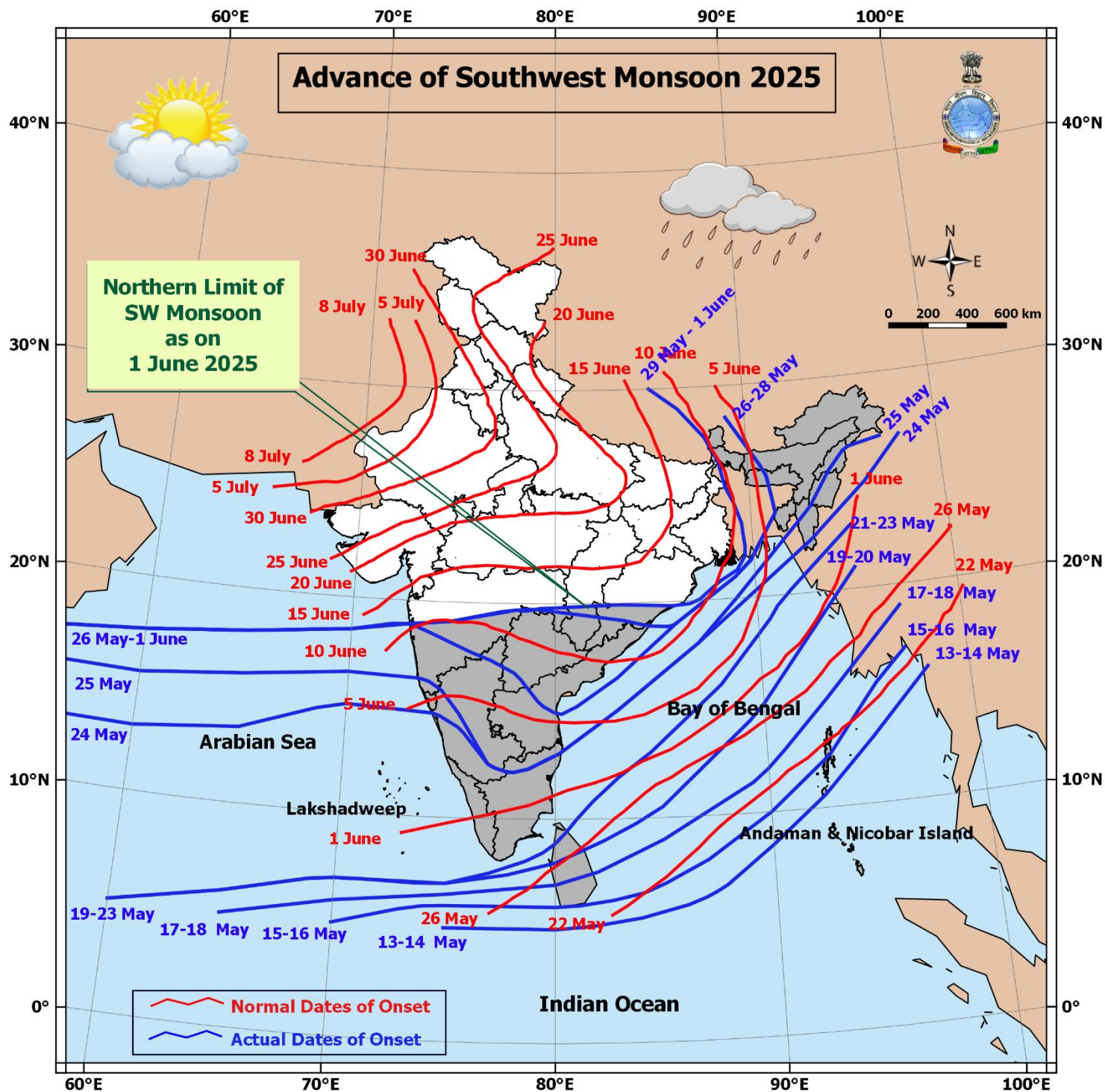
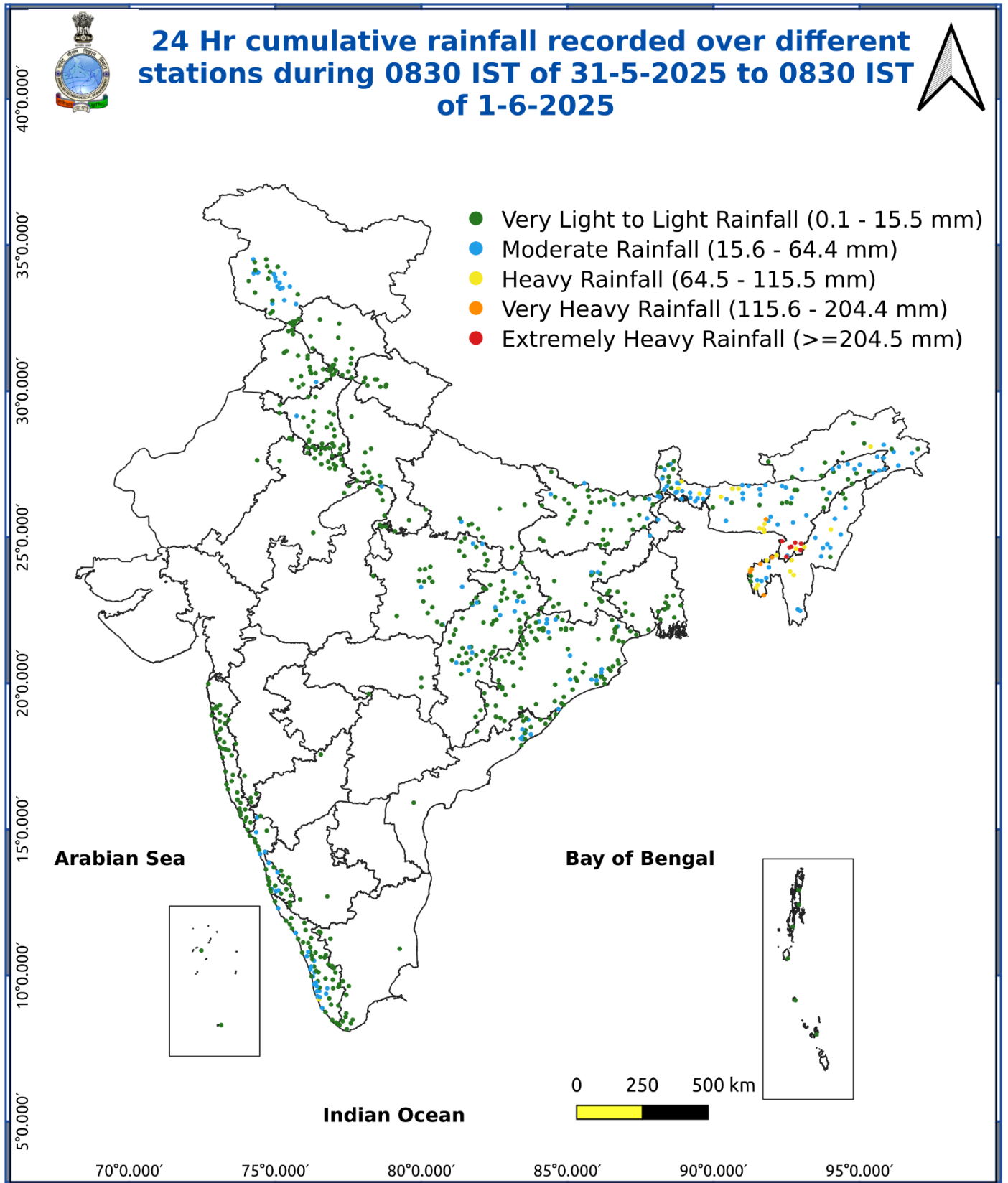


Fig. 6: Accumulated Rainfall (mm) during past 24 hours



Impact & Action Suggested due to heavy to very heavy rainfall over northeast India and adjoining Sub-Himalayan West Bengal & Sikkim during next 2 days. (For Red & Orange colour warning areas)

Impact Expected

- ❖ Localized Flooding of roads, water logging in low lying areas of the above region.
- ❖ Occasional reduction in visibility due to heavy rainfall.
- ❖ Minor damage to kutcha roads.
- ❖ Possibilities of damage to vulnerable structure.
- ❖ Localized Landslides/Mudslides
- ❖ Damage to horticulture and standing crops in some areas due to inundation.
- ❖ It may lead to riverine flooding in some river catchments (for riverine flooding please visit Web page of CWC).

Action Suggested

- ❖ Check for traffic congestion on your route before leaving for your destination.
- ❖ Follow any traffic advisories that are issued in this regard.
- ❖ Avoid going to areas that face the water logging problems often.
- ❖ Avoid staying in vulnerable structure.

Impact expected and action suggested due to isolated thunderstorm with lightning/gusty & Squally winds over

- ❖ **Thundersquall wind speed reaching 50-60 kmph gusting to 70 kmph** over likely over Jammu-Kashmir on 02nd & 03rd, Himachal Pradesh on 03rd & 04th, West Uttar Pradesh on 03rd, East Rajasthan on 02nd & 03rd June.

Impact expected:

- Minor to Major damage to banana and papaya trees.
- Strong wind/hail may damage plantation, horticulture and standing crops.
- Partial damage to vulnerable structures due to strong winds.
- Minor damage to kutcha houses/walls and huts.
- Loose objects may fly.

Action suggested:

- People are advised to keep a watch on the weather for worsening conditions and be ready to move to safer places accordingly.
- Stay indoors, close windows & doors and avoid travel if possible.
- Take safe shelters; do not take shelter under trees.
- Do not lie on concrete floors and do not lean against concrete walls.
- Unplug electrical/ electronic appliances.
- Immediately get out of water bodies.
- Keep away from all the objects that conduct electricity.

Agromet advisories for likely impact of Heavy Rainfall / Gusty Winds

- Postpone rice transplanting in **Arunachal Pradesh**; sowing of *Sali* rice and vegetables in **Assam**; sowing of finger millet, maize, and black gram in **Manipur**; sowing of Jethi Dhan, maize, barnyard millet, and finger millet in **Uttarakhand**; and harvesting of rice in **Tripura**.
- Drain out excess water and ensure proper drainage in the rice nursery beds, fields of chilli, okra, other vegetables and soybean in **Arunachal Pradesh**; from rice, sesame, maize, sugarcane, ginger and turmeric in **Assam**; from bottle gourd and French bean in **Meghalaya**; from upland rice and maize in **Mizoram**; from pre *kharif* rice, soybean, finger millet, maize, black gram, vegetables and orchards in **Manipur**; from cabbage, maize and orchards in **Nagaland**; from unharvested rice fields, *Aus* rice nurseries and vegetables in **Tripura**; from Dalley Khorsani & tomato in **Sub Himalayan West Bengal**; from rice nurseries, pigeon pea and already sown maize, barnyard millets and finger millets; banana and coconut in **Kerala**; and from arecanut and banana in **Coastal Karnataka**.
- Shift the harvested produce in safer places or cover the produce with tarpaulin sheets in the fields. Tie the harvested crops properly and cover them to minimise the risk of displacement due to strong surface winds.
- Provide mechanical support and propping to horticultural crops and staking to vegetables to avoid lodging.

Livestock / Poultry / Fishery

- Keep the animals inside the shed during heavy rainfall and provide them balanced feed.
- Store feed and fodder in a safe place to prevent spoilage.
- Construct an outlet with proper netting around the ponds to drain out excess water, thereby preventing fish from escaping in case of overflow.

Flash Flood Guidance:

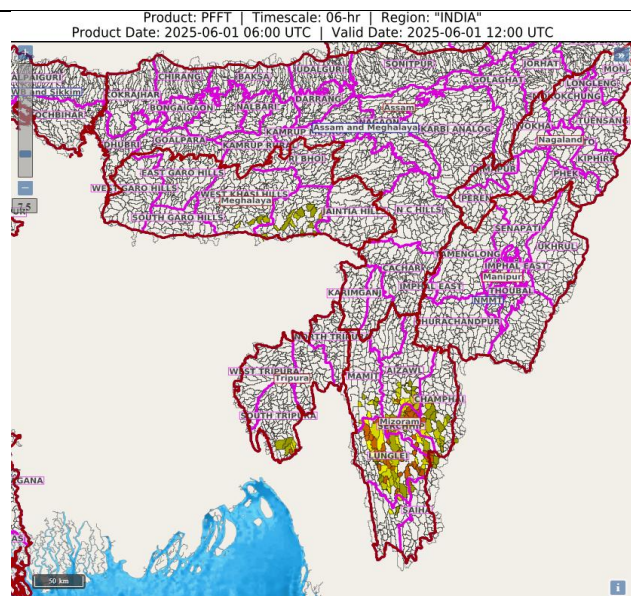
Persistent Flash Flood Threat (PFFT) till 1730 IST of 01-06-2025:

Moderate flash flood threat likely over few watersheds & neighbourhoods of following Met Sub-divisions during next 6 hours.

Assam & Meghalaya - East Khasi Hills and West Khasi Hills districts.

Nagaland Mizoram Manipur Tripura (NMMT) –
Mizoram- Aizawl, Champhai, Lawngtlai, Lunglei, Mamit
Tripura- South Tripura districts.

Surface runoff/ Inundation may occur at some fully saturated soils & low-lying areas over Area of Concern (AoC) as shown in map due to expected rainfall occurrence in next 6 hours.



24 hours Outlook for the Flash Flood Risk (FFR) till 1130 IST of 02-06-2025 :

Moderate flash flood risk likely over few watersheds & neighbourhoods of following Met Sub-divisions during next 24 hours.

Arunachal Pradesh - Changlang, Dibang Valley, East Siang, Lohit, Lower Dibang Valley, Lower Subansiri, Tirap, West Siang, Anjaw, Upper Siang and Kurung Kumey districts.

Assam & Meghalaya - Bongaigaon, Kokrajhar, N.C Hills, Karimganj, East Garo Hills, East Khasi Hills, South Garo Hills, West Garo Hills, West Khasi Hills and Jaintia Hills districts.

Nagaland Mizoram Manipur Tripura (NMMT) –

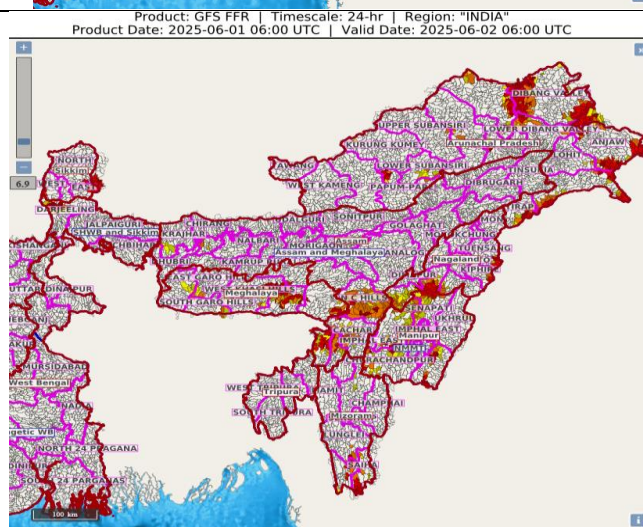
Manipur- Chandel, Churachandpur, Imphal East, Senapati, Tamenglong, Ukhrul,

Mizoram- Aizawl, Lawngtlai, Lunglei, Saiha,

Nagaland- Kiphire, Kohima, Mon, Peren and Tuensang districts.

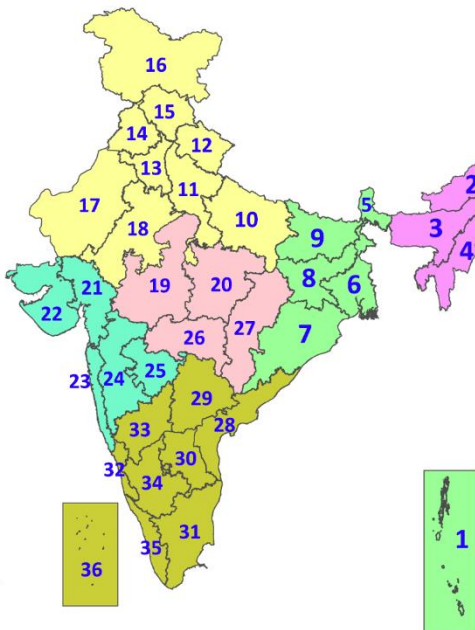
Sub-Himalayan West Bengal & Sikkim - East Sikkim, North Sikkim, South Sikkim, West Sikkim and Darjeeling districts.

Surface runoff/ Inundation may occur at some fully saturated soils & low-lying areas over Area of Concern (AoC) as shown in map due to expected rainfall occurrence in next 24 hours.



LEGENDS

1. अंडमान और निकोबार द्वीपसमूह
2. अरुणाचल प्रदेश
3. असम और मेघालय
4. नागालैंड, मणिपुर, मिजोरम और त्रिपुरा
5. उप-हिमालयी पश्चिम बंगाल और सिक्किम
6. गंगीय पश्चिम बंगाल
7. ओडिशा
8. झारखंड
9. बिहार
10. पूर्वी उत्तर प्रदेश
11. पश्चिम उत्तर प्रदेश
12. उत्तराखंड
13. हरियाणा, चंडीगढ़ और दिल्ली
14. पंजाब
15. हिमाचल प्रदेश
16. जम्मू और कश्मीर और लद्दाख
17. पश्चिम राजस्थान
18. पूर्वी राजस्थान
19. पश्चिम मध्य प्रदेश
20. पूर्वी मध्य प्रदेश
21. गुजरात
22. सौराष्ट्र
23. कोंकण और गोवा
24. मध्य महाराष्ट्र
25. मराठवाड़ा
26. विदर्भ
27. छत्तीसगढ़
28. तटीय आंध्र प्रदेश और यनम
29. तेलंगाना
30. रायलसीमा
31. तमिलनाडु, पुडुचेरी और कराईकल
32. तटीय कर्नाटक
33. आंतरिक उत्तरी कर्नाटक
34. आंतरिक दक्षिणी कर्नाटक
35. केरल और माहे
36. लक्षद्वीप



1. Andaman & Nicobar Islands
2. Arunachal Pradesh
3. Assam & Meghalaya
4. Nagaland, Manipur, Mizoram & Tripura
5. Sub-Himalayan West Bengal & Sikkim
6. Gangetic West Bengal
7. Odisha
8. Jharkhand
9. Bihar
10. East Uttar Pradesh
11. West Uttar Pradesh
12. Uttarakhand
13. Haryana, Chandigarh & Delhi
14. Punjab
15. Himachal Pradesh
16. Jammu & Kashmir and Ladakh
17. West Rajasthan
18. East Rajasthan
19. West Madhya Pradesh
20. East Madhya Pradesh
21. Gujarat
22. Saurashtra
23. Konkan & Goa
24. Madhya Maharashtra
25. Marathwada
26. Vidarbha
27. Chhattisgarh
28. Coastal Andhra Pradesh & Yanam
29. Telangana
30. Rayalaseema
31. Tamilnadu, Puducherry & Karaikal
32. Coastal Karnataka
33. North Interior Karnataka
34. South Interior Karnataka
35. Kerala & Mahe
36. Lakshadweep

SPATIAL DISTRIBUTION (% of Stations reporting)

% Stations	Category	% Stations	Category
76-100	Widespread (WS/Most Places)	26-50	Scattered (SCT/A Few Places)
51-75	Fairly Widespread (FWS/Many Places)	1-25	Isolated (ISOL)



Fog



Heavy Rain



Very Heavy Rain



Extremely Heavy Rain



Thunder & Lightning



Hailstorm



Dust Raising Winds



Heavy Snow



Dust Storm



Heat Wave



Warm Night



Hot Day



Hot & Humid



Strong Surface Winds



Cold Wave



Cold Day



Ground Frost

COLOUR CODED WARNING

No Warning (No Action)

Watch (Be Aware)

Alert (Be Prepared To Take Action)

Warning (Take Action)

Probabilistic Forecast

Terms	Probability of Occurrence (%)
Unlikely	< 25
Likely	25 - 50
Very Likely	50 - 75
Most Likely	> 75

* Red colour warning does not mean "Red Alert", Red colour warning means "Take Action".

Forecast and Warning for any day is valid from 0830 hours IST of day till 0830 hours IST of next day.

For more details, kindly visit <https://mausam.imd.gov.in> or contact: 011-2434-4599

(Service to the Nation since 1875)

DEFINITION/CRITERIA

Rain/ Snow *

Heavy: 64.5 to 115.5 mm/cm *
Very Heavy: 115.6 to 204.4 mm/cm*
Extremely Heavy: > 204.4 mm/cm *

Heat Wave

When maximum temperature of a station reaches $\geq 40^\circ\text{C}$ for plains and $\geq 30^\circ\text{C}$ for hilly regions
(a) Based on Departure from normal

Heat Wave: Maximum Temperature Departure from normal 4.5°C to 6.4°C .

Severe Heat Wave: Maximum Temperature Departure from normal $\geq 6.5^\circ\text{C}$

(b). Based on Actual maximum temperature

Heat Wave: When actual maximum temperature $\geq 45^\circ\text{C}$.

Severe Heat Wave: When actual maximum temperature $\geq 47^\circ\text{C}$

(c). Criteria for heat wave for coastal stations

When maximum temperature departure is $> 4.5^\circ\text{C}$ from normal. Heat Wave may be described provided maximum temperature $\geq 37^\circ\text{C}$

Warm Night

When maximum temperature remains 40°C

Warm Night: When minimum temperature departure 4.5°C to 6.4°C .

Severe Warm Night: When minimum temperature departure $> 6.4^\circ\text{C}$.

Cold Wave

When minimum temperature of a station $\leq 10^\circ\text{C}$ for plains and $\leq 0^\circ\text{C}$ for hilly regions.
(a). Based on departure

Cold Wave: Minimum Temperature Departure from normal -4.5°C to -6.4°C .

Severe Cold Wave: Minimum Temperature Departure from normal $\leq -6.5^\circ\text{C}$

(b) Based on actual Minimum Temperature (for Plains only)

Cold Wave : When Minimum Temperature is $\leq 4.0^\circ\text{C}$

Severe Cold Wave: When Minimum Temperature is $\leq 2.0^\circ\text{C}$

(c) For Coastal Stations

When Minimum Temperature departure is $\leq -4.5^\circ\text{C}$ & actual Minimum Temperature is $\leq 15^\circ\text{C}$

Cold Day

When minimum temperature of a station $\leq 10^\circ\text{C}$ for plains and $\leq 0^\circ\text{C}$ for hilly regions
Based on departure

Cold Day: Maximum Temperature Departure from normal -4.5°C to -6.4°C .

Severe Cold Day: Maximum Temperature Departure from normal $\leq -6.5^\circ\text{C}$

Fog

Phenomenon of small droplets suspended in air and the horizontal visibility $< 1\text{km}$

Moderate Fog: When the visibility between 500-200 metres

Dense Fog: when the visibility between 50- 200 metres

Very Dense Fog: when the visibility < 50 metres

Thunderstorm

Sudden electrical discharges manifested by a flash of light (Lightning) and a sharp rumbling sound (thunder)

Dust/Sand Storm

An ensemble of particles of dust or sand energetically lifted to great heights by a strong and turbulent wind.

Frost

Ice deposits on ground

Air temperature $\leq 4^\circ\text{C}$ (over Plains)

Squall

A strong wind that rises suddenly, lasts for atleast 1 minute.

Moderate: Wind speed 52-61 kmph

Severe: Wind speed 62-87 kmph

Very Severe: Wind speed > 87 kmph

Sea State

Effect of various waves in the sea over specific area

Rough to very rough: Wind speed 41-62 kmph (22-33 knots) & Wave height 2.5-6 metre

High to very high: Wind speed 63-117 kmph (34-63 knots) & Wave height 6-14 metre

Phenomenal: Wind speed > 117 kmph (> 63 knots) & Wave height > 14 metre

Cyclone

Cyclonic Storm: Wind speed 62-87 kmph (34-47 knots)

Severe Cyclonic Storm: Wind speed 88-117 kmph (48-63 knots)

Very Severe Cyclonic Storm: Wind speed 118-165 kmph (64 - 89 knots)

Extremely Severe Cyclonic Storm: Wind speed 166-220 kmph (90 -119 knots)

Super Cyclone Strom: Wind speed > 220 kmph (> 119 knots)