

2026-03-30

Time of Issue: 14:27:00 hours IST  
(Mid-Day)

## ALL INDIA WEATHER SUMMARY AND FORECAST BULLETIN

### Significant Weather Features

#### WEATHER FORECAST AND WARNING:

##### Northwest India:

- **Scattered to fairly widespread** light to moderate rainfall/snowfall with isolated thunderstorm, lightning & gusty winds speed reaching (40-50 kmph) likely over western Himalayan region on 30<sup>th</sup> -31<sup>st</sup> March.
- **Isolated to Scattered** light to moderate rainfall with thunderstorm, lightning & gusty winds speed reaching (30-50 kmph) likely over Punjab, Haryana, Chandigarh & Delhi, Uttar Pradesh and East Rajasthan on 30<sup>th</sup> & 31<sup>st</sup> March and West Rajasthan on 30<sup>th</sup> March.
- Another fresh wet spell with **Scattered to fairly widespread** light to moderate rainfall/snowfall with isolated thunderstorm, lightning & gusty winds speed reaching (40-50 kmph) likely over Jammu-Kashmir-Ladakh-Gilgit-Baltistan-Muzaffarabad and Himachal Pradesh on 03<sup>rd</sup> & 04<sup>th</sup> April; Uttarakhand during 03<sup>rd</sup> -05<sup>th</sup> April with **isolated to scattered** light to moderate rainfall with isolated thunderstorm, lightning & gusty winds speed reaching (30-50 kmph reaching 60 kmph) likely over Punjab and Haryana Chandigarh & Delhi during 03<sup>rd</sup> -05<sup>th</sup> and West Rajasthan during 02<sup>nd</sup> – 04<sup>th</sup>; East Rajasthan on 03<sup>rd</sup> & 04<sup>th</sup>; West Uttar Pradesh on 04<sup>th</sup> & 05<sup>th</sup> April.
- **Isolated heavy rainfall/snowfall** likely over Kashmir valley on 30<sup>th</sup> March.
- **Isolated hailstorm activity** also likely over Jammu-Kashmir, Himachal Pradesh, Uttarakhand, Punjab, Haryana Chandigarh & Delhi, West Uttar Pradesh and East Rajasthan on 30<sup>th</sup> March.

##### Northeast India:

- **Fairly widespread to widespread** light to moderate rainfall with **thunderstorm, lightning gusty winds speed reaching (30-50 kmph)** likely over northeast India during 30<sup>th</sup> March- 03<sup>rd</sup> April.
- **Isolated heavy rainfall** likely over Arunachal Pradesh 31<sup>st</sup> March & 01<sup>st</sup> April; Assam & Meghalaya during 30<sup>th</sup> March -01<sup>st</sup> April and Tripura on 30<sup>th</sup> & 31<sup>st</sup> March.

##### East India:

- **Fairly widespread to widespread** light to moderate rainfall with **thunderstorm, lightning & gusty winds speed reaching (30-50 kmph)** likely over Sub-Himalayan West Bengal & Sikkim during 30<sup>th</sup> March- 02<sup>nd</sup> April.
- **Isolated to Scattered** light to moderate rainfall with **thunderstorm, lightning & gusty winds speed reaching (40-50 gusting to 60 kmph)** likely over Gangetic West Bengal on 30<sup>th</sup> March; Jharkhand on 30<sup>th</sup>, 31<sup>st</sup> March and 02<sup>nd</sup> & 03<sup>rd</sup> April; Odisha during 30<sup>th</sup> March -03<sup>rd</sup> April.
- **Thundersquall (wind speed reaching 50-60 kmph gusting to 70 kmph)** likely over Odisha on 30<sup>th</sup>, Bihar and Gangetic West Bengal on 31<sup>st</sup> March.
- **Isolated Hailstorm activity** likely over Sub-Himalayan West Bengal & Sikkim, Bihar, Jharkhand and Odisha on 31<sup>st</sup> March.
- **Isolated heavy rainfall** likely over Sub-Himalayan West Bengal & Sikkim on 31<sup>st</sup> March.

##### Central India:

- **Isolated** light to moderate rainfall **with thunderstorm, lightning & gusty winds speed reaching (30-50 kmph)** likely over Central India during next 5 days.
- **Isolated hailstorm activity** likely over West Madhya Pradesh on 30<sup>th</sup> March and Vidarbha on 31<sup>st</sup> March & 01<sup>st</sup>

\*Red color warning does not mean "Red Alert" Red color warning means "Take Action"

Forecast and warning for any day is valid from 0830 hours IST of day till 0830 hours IST of next day

For more details kindly visit <https://mausam.imd.gov.in> or contact 011-2434-4599

(Service to the nation since 1875)

April & Chhattisgarh during 30<sup>th</sup> March - 01<sup>st</sup> April.

**West India:**

- **Isolated** light to moderate rainfall **with thunderstorm, lightning& gusty winds speed reaching (30-50 gusting to 60 kmph)** likely over Madhya Maharashtra and Marathawada during 30<sup>th</sup> March – 03<sup>rd</sup> April; Gujarat State on 30<sup>th</sup> March and on 02<sup>nd</sup> & 03<sup>rd</sup> April with lightning over Konkan & Goa during 31<sup>st</sup> March – 02<sup>nd</sup> April.
- **Isolated hailstorm activity** likely over Madhya Maharashtra and Marathawada on 30<sup>th</sup> & 31<sup>st</sup> March.

**South Peninsular India:**

**Isolated** light to moderate rainfall **with thunderstorm, lightning& gusty winds speed reaching (30-50 gusting to 60 kmph)** likely over Kerala & Mahe on 30<sup>th</sup> & 31<sup>st</sup> March; Coastal Andhra Pradesh & Yanam, Telangana and Interior Karnataka during 30<sup>th</sup> March – 03<sup>rd</sup> April; Rayalaseema during 30<sup>th</sup> March – 01<sup>st</sup> April with **lightning** over Tamil Nadu on 30<sup>th</sup> & 31<sup>st</sup> March; Kerala & Mahe during 01<sup>st</sup> -03<sup>rd</sup> April and Coastal Karnataka 30<sup>th</sup> March -03<sup>rd</sup> April.

**Isolated heavy rainfall** likely over Kerala & Mahe on 30<sup>th</sup> & 31<sup>st</sup> March; Coastal Karnataka on 30<sup>th</sup> March.

**Isolated hailstorm activity** likely over Telangana and North Interior Karnataka on 30<sup>th</sup> March.

- **Forecast of maximum/day temperatures:**
- Gradual fall in maximum temperatures by 2-4°C likely over Northwest India except Uttar Pradesh till 30<sup>th</sup> March; gradual rise by 3-5°C during 31<sup>st</sup> March-03<sup>rd</sup> April; gradual fall by 3-5°C on 04<sup>th</sup> & 05<sup>th</sup> April.
- No significant change in maximum temperatures likely over Central India till 01<sup>st</sup> April and gradual fall by 2-3°C during 02<sup>nd</sup> -05<sup>th</sup> April.
- No significant change in maximum temperatures likely over East India till 01<sup>st</sup> April and gradual rise by 2-4°C during 02<sup>nd</sup> -05<sup>th</sup> April.
- Gradual fall in maximum temperatures by 2-3°C likely over Gujarat State till 01<sup>st</sup> April and no significant change during 02<sup>nd</sup> -05<sup>th</sup> April.
- No significant change in maximum temperatures likely over Maharashtra till 30<sup>th</sup> March and gradual fall by 2-3°C during 31<sup>st</sup> March -05<sup>th</sup> April.
- No significant change in maximum temperatures likely over rest parts of the country.
-

### Main Weather Observations:

❖ **Rainfall distribution** (from 0830 hours IST of yesterday to 0830 hours IST of today): **at most places** over Assam & Meghalaya and Himachal Pradesh; **at many places** over Nagaland, Manipur, Mizoram & Tripura and Jammu-KashmirLadakh-Gilgit-Baltistan-Muzaffarabad; **at a few places** over Arunachal Pradesh, Sub Himalayan West Bengal & Sikkim, Punjab and Kerala & Mahe; **at isolated places** over Andaman & Nicobar Islands, Gangetic West Bengal, Odisha, Jharkhand, Bihar, Uttarakhand, Haryana-Chandigarh-Delhi, West Madhya Pradesh, Coastal Andhra Pradesh & Yanam, Telangana, Rayalaseema, Tamil Nadu, Puducherry & Karaikal, North Interior Karnataka and South Interior Karnataka; **Dry** over rest of the country.

❖ **Significant rainfall recorded(in cm)** (from 0830 hours IST of yesterday to 0830 hours IST of today): **Kerala & Mahe**: Kozhikode (dist Kozhikode) 8; **Nagaland, Manipur, Mizoram & Tripura**: Sabroom AWS (dist South Tripura) 6.

❖ **Heavy Rainfall observed** (from 0830 hours IST of yesterday to 0830 hours IST of today):**Heavy rain** at isolated places over Kerala & Mahe.

❖ **Minimum Temperature Departures (as on 30-03-2026)**: **markedly above normal(> 5.1°C)** at few places over West Rajasthan; at isolated places over Jharkhand, East Uttar Pradesh, West Uttar Pradesh, East Rajasthan, East Madhya Pradesh and Madhya Maharashtra. **appreciably above normal(3.1°C to 5.0°C)** at many places over Jammu-KashmirLadakh-Gilgit-Baltistan-Muzaffarabad, East Rajasthan and Gujarat Region; at few places over East Uttar Pradesh, West Uttar Pradesh, Haryana-Chandigarh-Delhi, West Rajasthan, East Madhya Pradesh, Saurashtra & Kutch and Madhya Maharashtra; at isolated places over Andaman & Nicobar Islands, Odisha, Bihar, Uttarakhand, Punjab, Himachal Pradesh, West Madhya Pradesh, Konkan & Goa, Marathwada, Vidarbha, Rayalaseema and Tamil Nadu, Puducherry & Karaikal. **above normal(1.6°C to 3.0°C)** at many places over Marathwada and Chhattisgarh; at few places over Odisha, Jharkhand, East Uttar Pradesh, Uttarakhand, Haryana-Chandigarh-Delhi, Punjab, West Rajasthan, West Madhya Pradesh, East Madhya Pradesh, Saurashtra & Kutch, Madhya Maharashtra, Vidarbha, Coastal Andhra Pradesh & Yanam, Telangana and North Interior Karnataka; at isolated places over Assam & Meghalaya, Nagaland, Manipur, Mizoram & Tripura, Sub Himalayan West Bengal & Sikkim, Gangetic West Bengal, Bihar, West Uttar Pradesh, Himachal Pradesh, Jammu-KashmirLadakh-Gilgit-Baltistan-Muzaffarabad, East Rajasthan, Gujarat Region, Konkan & Goa and Tamil Nadu, Puducherry & Karaikal. **near normal(-1.5°C to 1.5°C)** at many places over Assam & Meghalaya, Sub Himalayan West Bengal & Sikkim, Bihar, Konkan & Goa, Coastal Andhra Pradesh & Yanam, Rayalaseema, North Interior Karnataka and South Interior Karnataka; at most places over Andaman & Nicobar Islands, Arunachal Pradesh, Gangetic West Bengal, Tamil Nadu, Puducherry & Karaikal, Coastal Karnataka, Kerala & Mahe and Lakshadweep; at few places over Nagaland, Manipur, Mizoram & Tripura, Odisha, Jharkhand, Haryana-Chandigarh-Delhi, Punjab, Himachal Pradesh, West Madhya Pradesh, East Madhya Pradesh, Madhya Maharashtra, Vidarbha, Chhattisgarh and Telangana; at isolated places over East Uttar Pradesh, West Uttar Pradesh, Jammu-KashmirLadakh-Gilgit-Baltistan-Muzaffarabad, Gujarat Region and Saurashtra & Kutch. **Today**, the lowest minimum temperature of **15.0 °C** was observed **at Gurdaspur (Punjab) over the plains of India** over the Plains of India.

❖ **Maximum Temperature Departures (as on 29-03-2026)**: **markedly above normal(> 5.1°C)** at isolated places over Chhattisgarh. **appreciably above normal(3.1°C to 5.0°C)** at isolated places over East Uttar Pradesh, Haryana-Chandigarh-Delhi, East Rajasthan, East Madhya Pradesh and Kerala & Mahe. **above normal(1.6°C to 3.0°C)** at many places over Vidarbha; at few places over West Uttar Pradesh, Coastal Andhra Pradesh & Yanam, Coastal Karnataka and Lakshadweep; at isolated places over Gangetic West Bengal, Odisha, West Madhya Pradesh, Saurashtra & Kutch, Konkan & Goa, Telangana and Tamil Nadu, Puducherry & Karaikal. **near normal(-1.5°C to 1.5°C)** at many places over Jharkhand, Madhya Maharashtra and North Interior Karnataka; at most places over Andaman & Nicobar Islands, Jammu-KashmirLadakh-Gilgit-Baltistan-Muzaffarabad, West Rajasthan, Marathwada, Rayalaseema and South Interior Karnataka; at few places over Nagaland, Manipur, Mizoram & Tripura, Bihar, Uttarakhand and Punjab; at isolated places over Sub Himalayan West Bengal & Sikkim. **The highest maximum temperature** of 41.4°C was reported at AKOLA (MAHARASHTRA).

**\*Red color warning does not mean "Red Alert" Red color warning means "Take Action"**

**Forecast and warning for any day is valid from 0830 hours IST of day till 0830 hours IST of next day**

**For more details kindly visit <https://mausam.imd.gov.in> or contact 011-2434-4599**

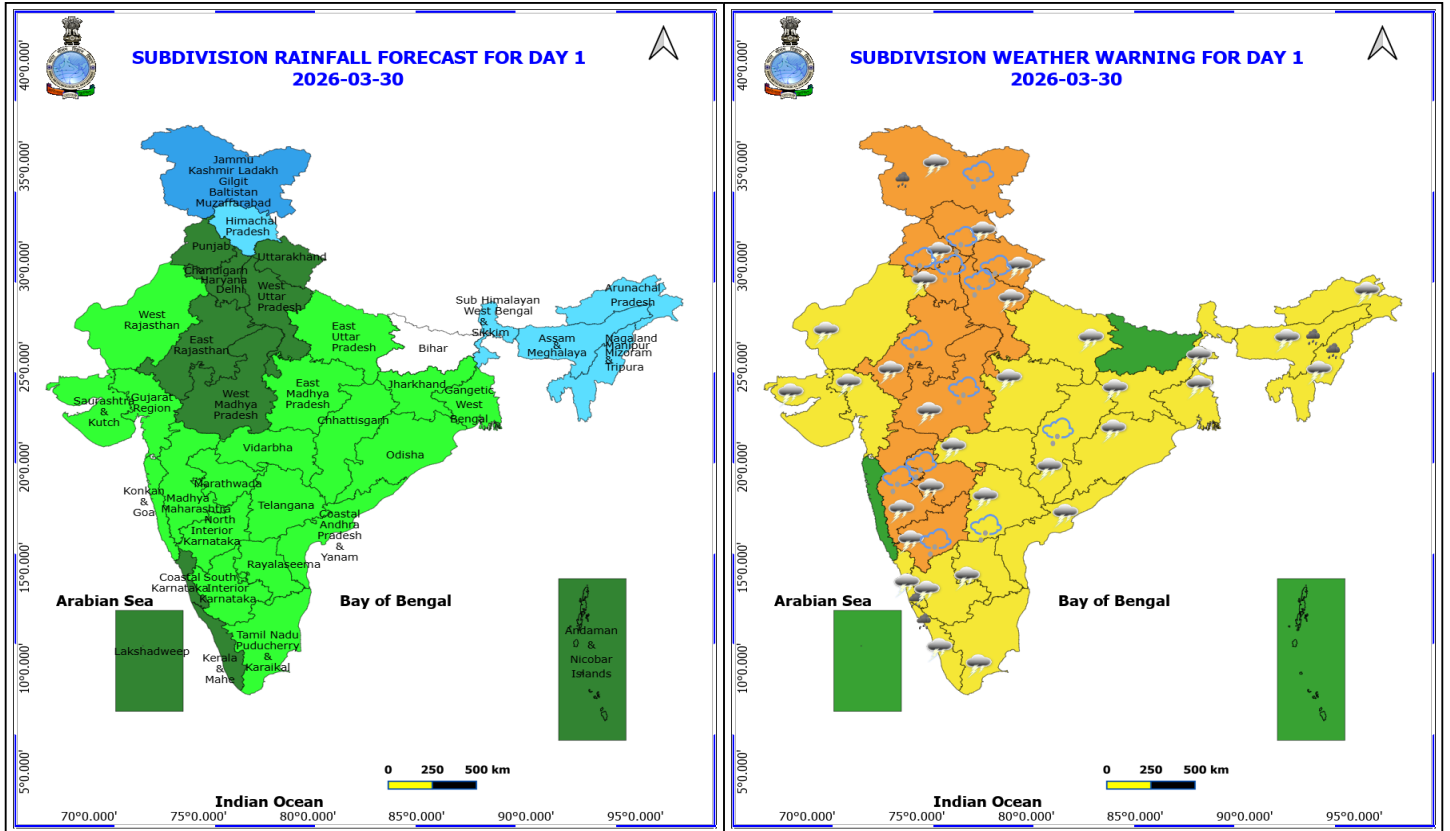
**(Service to the nation since 1875)**

### Meteorological Analysis (Based on 0830 hours IST)

- The **Western Disturbance** as an **upper air cyclonic circulation** over North Iran & adjoining Caspian sea between 3.1 & 9.4 km above mean sea level persists with an associated trough in lower to upper tropospheric levels now runs roughly along Long. 65°E to the north of Lat. 20°N at 3.1 km above mean sea level.
- The **induced upper air cyclonic circulation** over northwest Rajasthan & neighbourhood now lies over Punjab and adjoining Haryana extending upto 1.5 km above mean sea level.
- A **trough** runs from an upper air cyclonic circulation over Punjab and adjoining Haryana to northeast Arabian Sea across West Rajasthan at 1.5 km above mean sea level.
- An **upper air cyclonic circulation** lies over northwest Uttar Pradesh at 0.9 km above mean sea level.
- A **trough** runs from an upper air cyclonic circulation over northwest Uttar Pradesh to interior Odisha across Madhya Pradesh, Chhattisgarh at 0.9 km above mean sea level.
- An **upper air cyclonic circulation** lies over north Madhya Pradesh adjoining Uttar Pradesh at 0.9 km above mean sea level has merged with the above trough.
- The **upper air cyclonic circulation** over north interior Odisha Adjoining Chhattisgarh at 0.9 km has merged with the above trough.
- The **East-West trough** now runs from northeast Bihar to Manipur across North Bangladesh, Meghalaya and southeast Assam at 0.9 above mean sea level.
- The **upper air cyclonic circulation** over north Bangladesh & neighbourhood at 0.9 km above mean sea level has merged with the above trough.
- The **trough/Wind discontinuity** now runs from west Vidarbha to south Tamil Nadu across Marathwada and Interior Karnataka at 0.9 km above mean sea level.
- The **trough** from Bihar to Gangetic West Bengal across Jharkhand at 1.5 km above mean sea level persists.
- The **upper air cyclonic circulation** over northeast Assam & neighbourhood at 1.5 km above mean sea level persists.
- A **trough** in easterlies runs from Comorin area to North Interior Karnataka across Tamil Nadu, Puducherry & Karaikal and South Interior Karnataka at 1.5 km above mean sea level.
- **Subtropical westerly Jet Stream** with core winds of the order of 95 knots at 12.6 km above mean sea level continues to prevail over North India.
- A fresh **Western Disturbance** is likely to affect Northwest India from 02<sup>nd</sup> April, 2026.
- The **upper air cyclonic circulation** over Rayalaseema & neighbourhood at 1.5 km above mean sea level has become less marked.
- The **upper air cyclonic circulation** over South Interior Karnataka & neighbourhood at 5.8 km above mean sea level has become less marked.

### Weather Outlook for subsequent 3 days

- Widespread rainfall activity likely over Northeast India, Jammu & Kashmir adjoining Punjab, Himachal Pradesh, Tamil Nadu and isolated rainfall activity over Uttarakhand & adjoining plains of western himalayan region, Central India, Odisha & adjoining Coastal Andhra Pradesh.



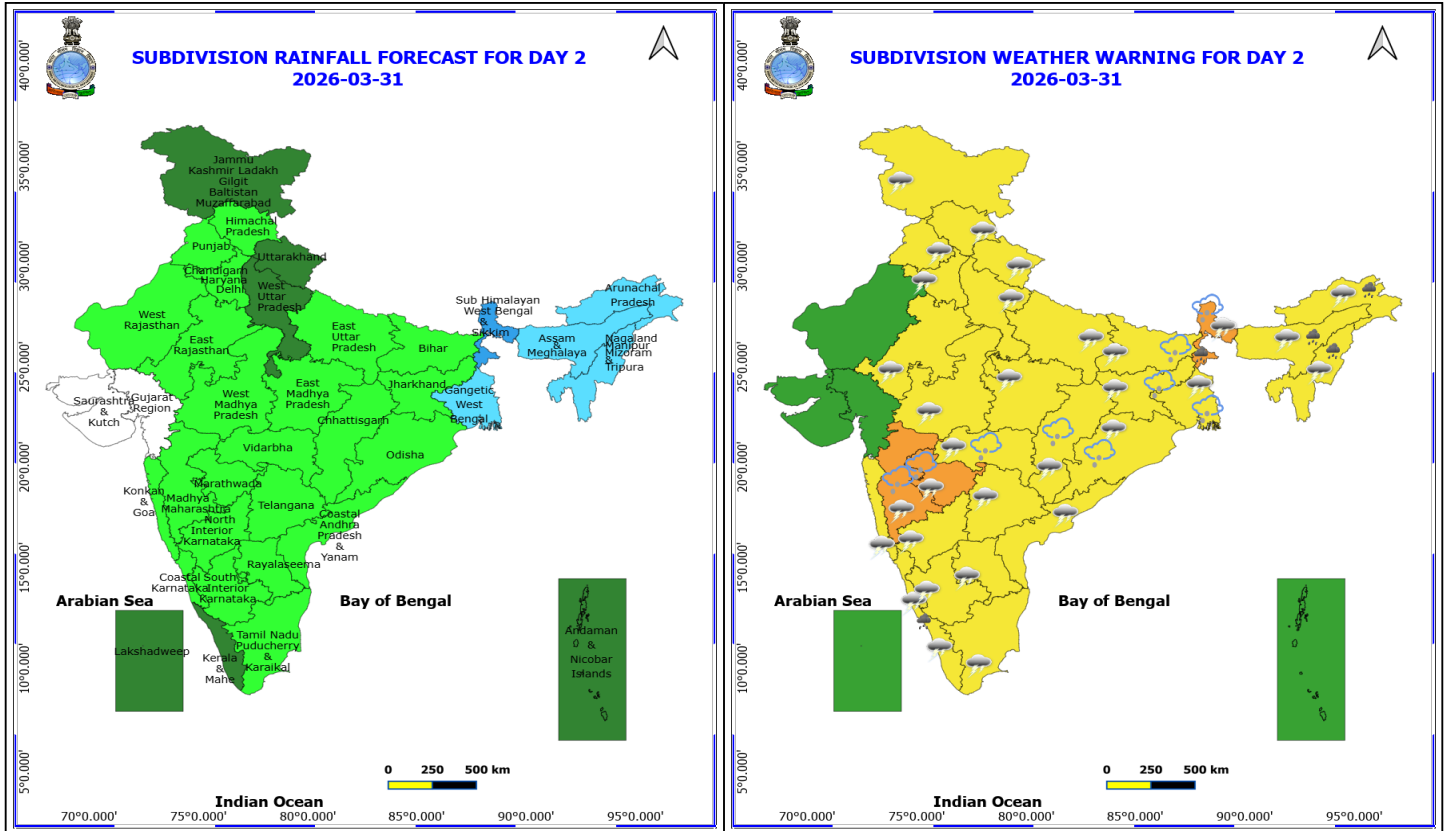
### 30 March (Day 1)

- ❖ **Heavy Rainfall** very likely at isolated places over Assam & Meghalaya, Coastal Karnataka, Jammu-Kashmir-Ladakh-Gilgit-Baltistan-Muzaffarabad, Kerala & Mahe and Nagaland, Manipur, Mizoram and Tripura.
- ❖ **Thunderstorm accompanied with Hailstorm** very likely at isolated places over Chhattisgarh, East Rajasthan, Haryana, Chandigarh & Delhi, Himachal Pradesh, Jammu-Kashmir-Ladakh-Gilgit-Baltistan-Muzaffarabad, Madhya Maharashtra, Marathwada, North Interior Karnataka, Punjab, Telangana, Uttarakhand, West Madhya Pradesh and West Uttar Pradesh.
- ❖ **Thundersquall with wind speed reaching(50-60kmph)** very likely at isolated places over Odisha.
- ❖ **Thunderstorm accompanied with lightning & gusty winds(40-50kmph)** very likely at isolated places over Andhra Pradesh, Haryana, Chandigarh & Delhi, Himachal Pradesh, Jammu-Kashmir-Ladakh-Gilgit-Baltistan-Muzaffarabad, Kerala & Mahe, Madhya Maharashtra, Madhya Pradesh, Marathwada, North Interior Karnataka, Punjab, Rajasthan, Telangana, Uttarakhand and West Uttar Pradesh.
- ❖ **Thunderstorm accompanied with lightning & gusty winds(30-40kmph)** very likely at isolated places over Assam & Meghalaya, Chhattisgarh, Coastal Karnataka, Gujarat State, Jharkhand, Nagaland, Manipur, Mizoram and Tripura, South Interior Karnataka, Vidarbha and West Bengal & Sikkim.
- ❖ **Thunderstorm accompanied with Lightning** very likely at isolated places over Arunachal Pradesh, East Uttar Pradesh and Tamil Nadu Puducherry & Karaikal.

**No Fishermen Warning**

**\*Red color warning does not mean "Red Alert" Red color warning means "Take Action"**  
Forecast and warning for any day is valid from 0830 hours IST of day till 0830 hours IST of next day  
For more details kindly visit <https://mausam.imd.gov.in> or contact 011-2434-4599

(Service to the nation since 1875)



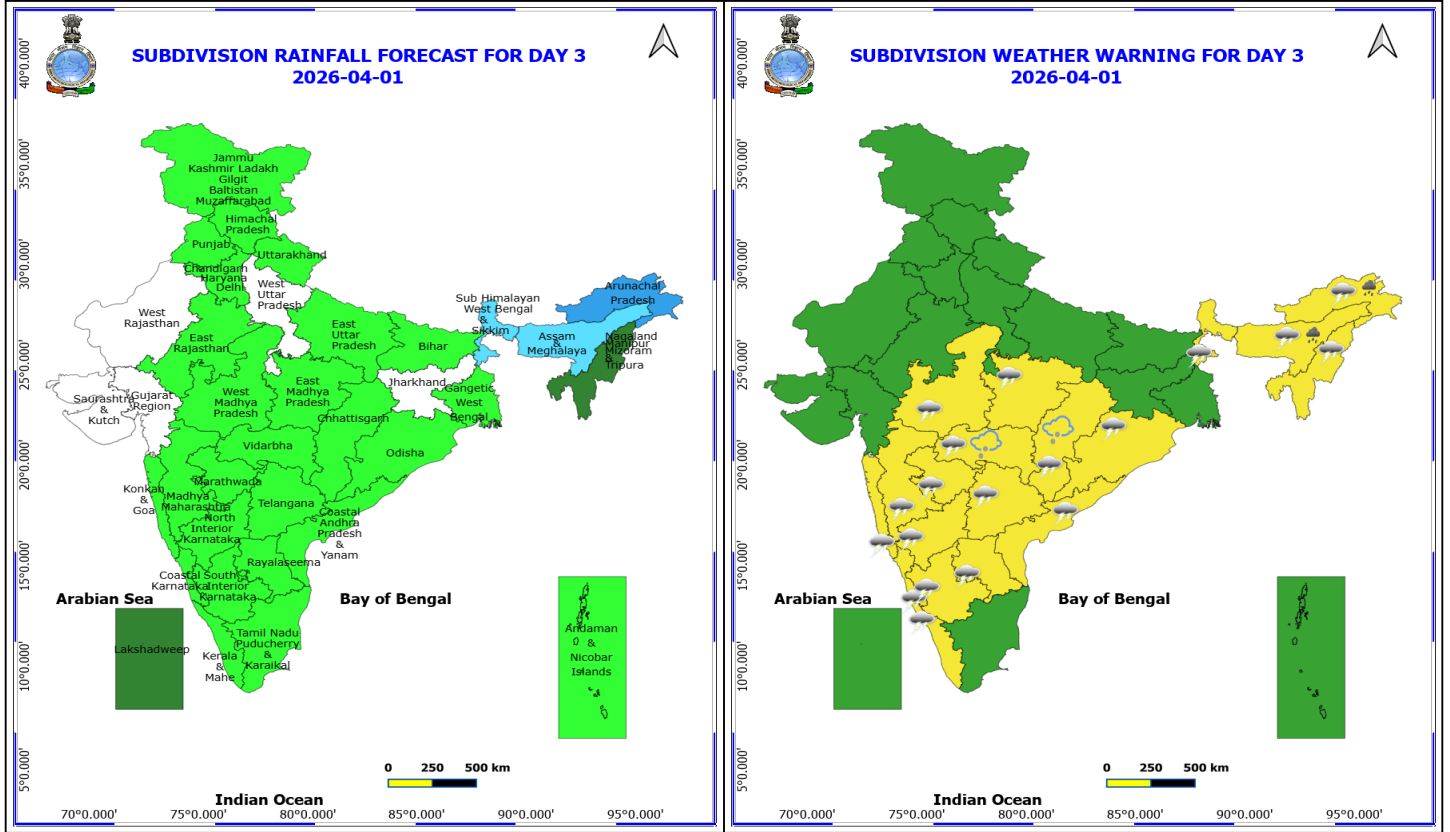
### 31 March (Day 2)

- ❖ **Heavy Rainfall** very likely at isolated places over Arunachal Pradesh, Assam & Meghalaya, Kerala & Mahe, Nagaland, Manipur, Mizoram and Tripura and Sub Himalayan West Bengal & Sikkim.
- ❖ **Thunderstorm accompanied with Hailstorm** very likely at isolated places over Bihar, Chhattisgarh, Jharkhand, Maharashtra, Odisha and West Bengal & Sikkim.
- ❖ **Thundersquall with wind speed reaching(50-60kmph)** very likely at isolated places over Bihar and Gangetic West Bengal.
- ❖ **Thunderstorm accompanied with lightning & gusty winds(40-50kmph)** very likely at isolated places over Andhra Pradesh, Chhattisgarh, Jammu-Kashmir-Ladakh-Gilgit-Baltistan-Muzaffarabad, Jharkhand, Kerala & Mahe, Maharashtra, Odisha, Sub Himalayan West Bengal & Sikkim and Uttarakhand.
- ❖ **Thunderstorm accompanied with lightning & gusty winds(30-40kmph)** very likely at isolated places over Arunachal Pradesh, Assam & Meghalaya, East Rajasthan, Haryana, Chandigarh & Delhi, Himachal Pradesh, Karnataka, Konkan & Goa, Madhya Pradesh, Nagaland, Manipur, Mizoram and Tripura, Punjab, Telangana and Uttar Pradesh.
- ❖ **Thunderstorm accompanied with Lightning** very likely at isolated places over Tamil Nadu Puducherry & Karaikal.

**No Fishermen Warning**

\*Red color warning does not mean "Red Alert" Red color warning means "Take Action"  
Forecast and warning for any day is valid from 0830 hours IST of day till 0830 hours IST of next day  
For more details kindly visit <https://mausam.imd.gov.in> or contact 011-2434-4599

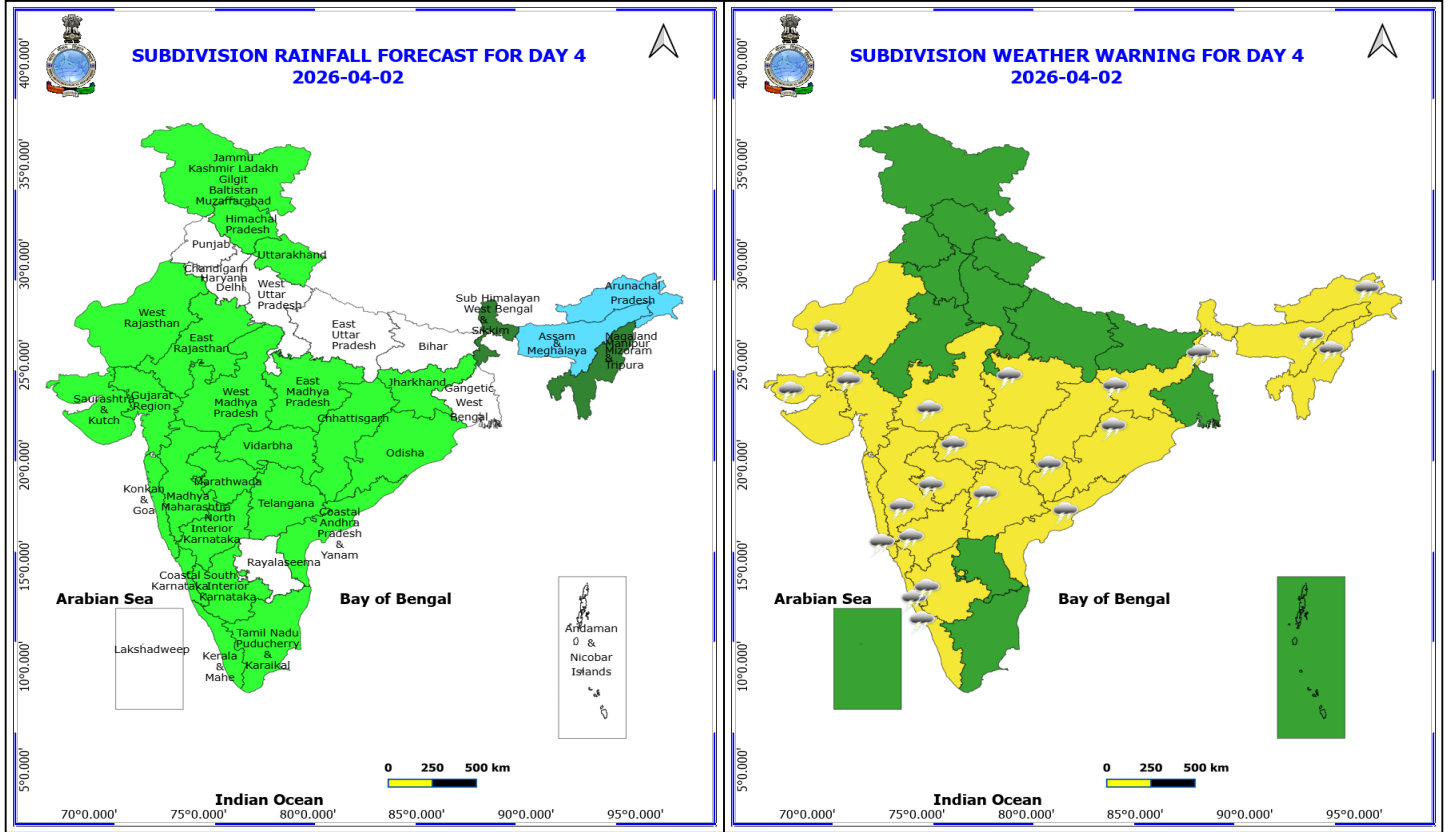
(Service to the nation since 1875)



1 April (Day 3)

- ❖ **Heavy Rainfall** very likely at isolated places over Arunachal Pradesh and Assam & Meghalaya.
- ❖ **Thunderstorm accompanied with Hailstorm** very likely at isolated places over Chhattisgarh and Vidarbha.
- ❖ **Thunderstorm accompanied with lightning & gusty winds(40-50kmph)** very likely at isolated places over Assam & Meghalaya, Chhattisgarh and Maharashtra.
- ❖ **Thunderstorm accompanied with lightning & gusty winds(30-40kmph)** very likely at isolated places over Andhra Pradesh, Arunachal Pradesh, Karnataka, Konkan & Goa, Madhya Pradesh, Nagaland, Manipur, Mizoram and Tripura, Odisha, Sub Himalayan West Bengal & Sikkim and Telangana.
- ❖ **Thunderstorm accompanied with Lightning** very likely at isolated places over Kerala & Mahe.

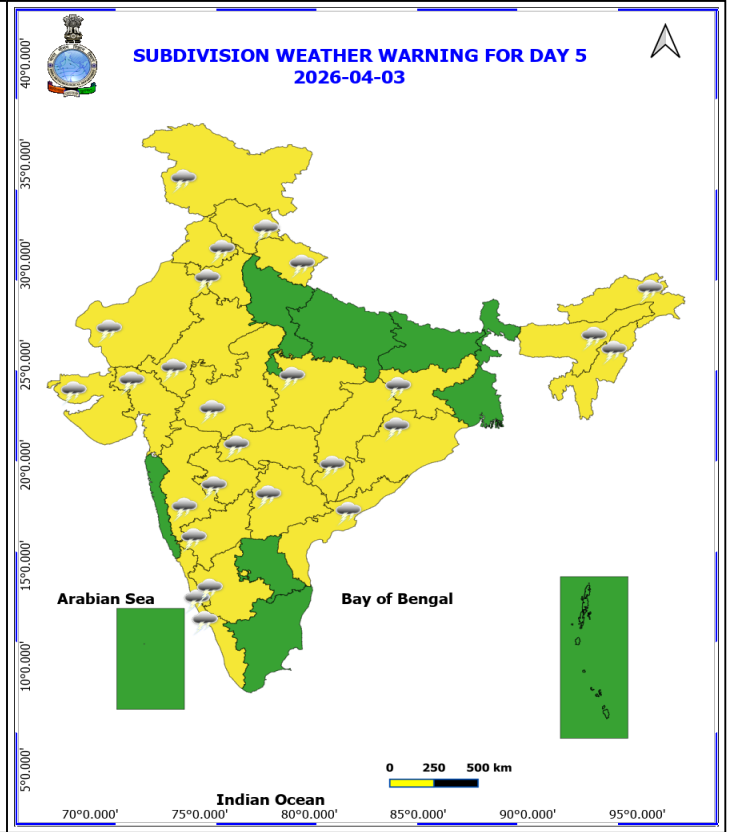
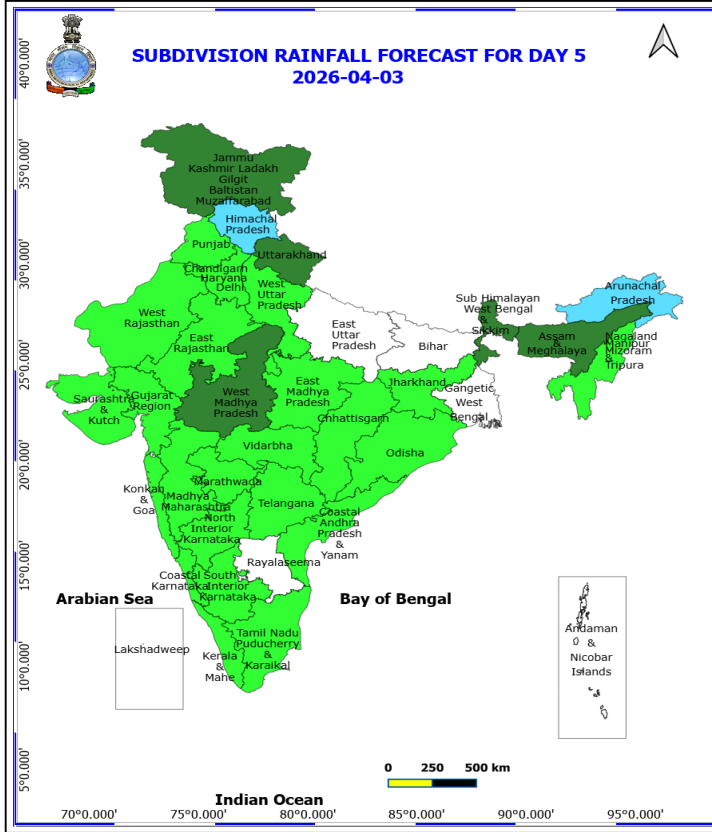
**No Fishermen Warning**



**2 April (Day 4)**

- ❖ **Thunderstorm accompanied with lightning & gusty winds(40-50kmph)** likely at isolated places over Chhattisgarh, Maharashtra and West Madhya Pradesh.
- ❖ **Thunderstorm accompanied with lightning & gusty winds(30-40kmph)** likely at isolated places over Assam & Meghalaya, Coastal Andhra Pradesh, East Madhya Pradesh, Gujarat State, Jharkhand, Karnataka, Konkan & Goa, Odisha, Sub Himalayan West Bengal & Sikkim, Telangana and West Rajasthan.
- ❖ **Thunderstorm accompanied with Lightning** likely at isolated places over Arunachal Pradesh, Kerala & Mahe and Nagaland, Manipur, Mizoram and Tripura.

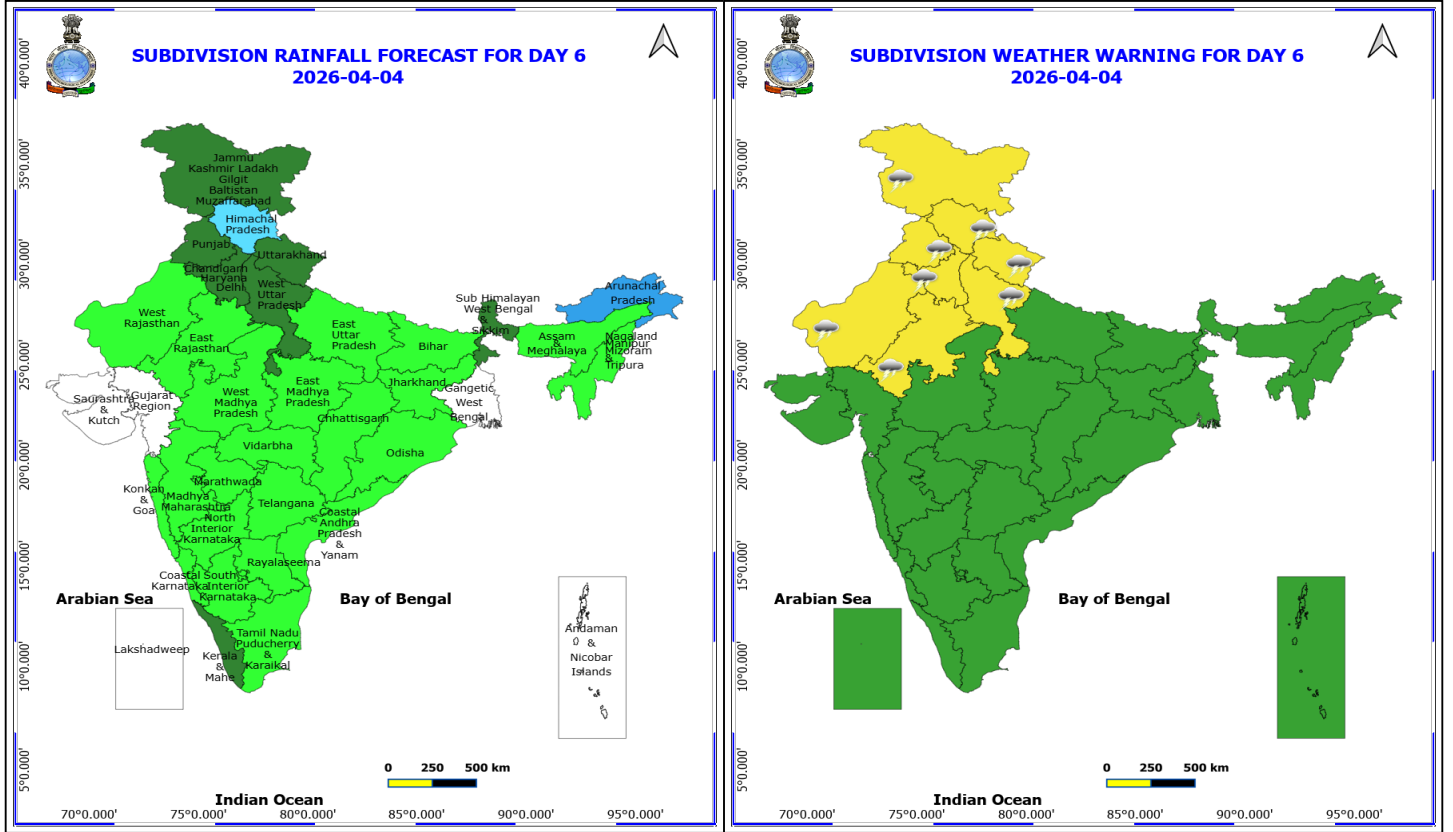
**No Fishermen Warning**



### 3 April (Day 5)

- ❖ **Thunderstorm accompanied with lightning & gusty winds(40-50kmph)** likely at isolated places over Chhattisgarh, Himachal Pradesh, Jammu-Kashmir-Ladakh-Gilgit-Baltistan-Muzaffarabad, Maharashtra, Rajasthan, Uttarakhand and West Madhya Pradesh.
- ❖ **Thunderstorm accompanied with lightning & gusty winds(30-40kmph)** likely at isolated places over Coastal Andhra Pradesh, East Madhya Pradesh, Gujarat State, Haryana, Chandigarh & Delhi, Jharkhand, Karnataka, Odisha, Punjab and Telangana.
- ❖ **Thunderstorm accompanied with Lightning** likely at isolated places over Arunachal Pradesh, Assam & Meghalaya, Kerala & Mahe and Nagaland, Manipur, Mizoram and Tripura.

**No Fishermen Warning**



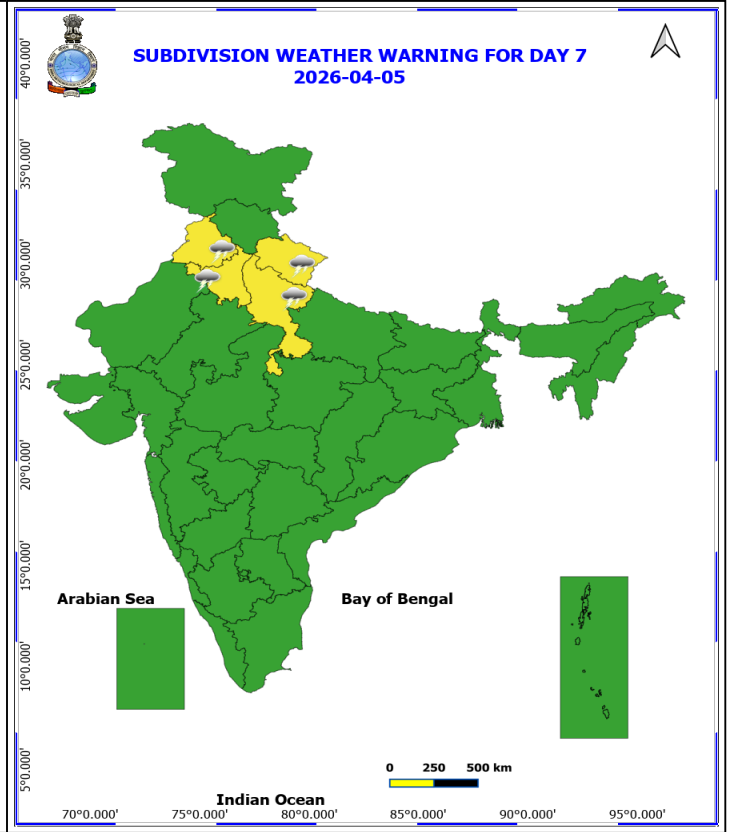
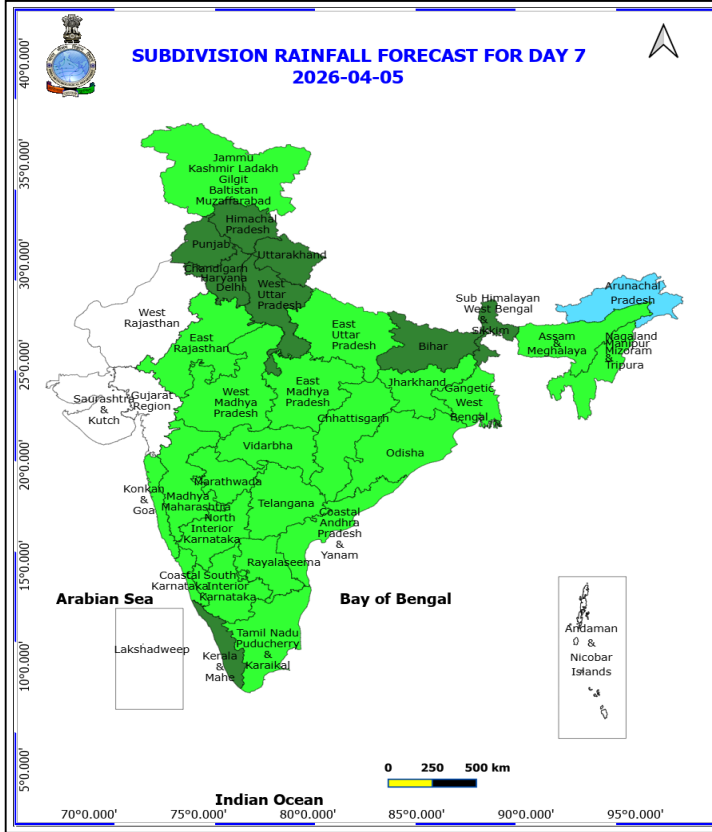
**4 April (Day 6)**

- ❖ **Thunderstorm accompanied with lightning & gusty winds(40-50kmph)** likely at isolated places over Himachal Pradesh, Jammu-Kashmir-Ladakh-Gilgit-Baltistan-Muzaffarabad, Rajasthan and Uttarakhand.
- ❖ **Thunderstorm accompanied with lightning & gusty winds(30-40kmph)** likely at isolated places over Haryana, Chandigarh & Delhi, Punjab and West Uttar Pradesh.

**No Fishermen Warning**

**\*Red color warning does not mean "Red Alert" Red color warning means "Take Action"**  
Forecast and warning for any day is valid from 0830 hours IST of day till 0830 hours IST of next day  
For more details kindly visit <https://mausam.imd.gov.in> or contact 011-2434-4599

(Service to the nation since 1875)



**5 April (Day 7)**

- ❖ **Thunderstorm accompanied with lightning & gusty winds(40-50kmph)** likely at isolated places over Uttarakhand.
- ❖ **Thunderstorm accompanied with lightning & gusty winds(30-40kmph)** likely at isolated places over Haryana, Chandigarh & Delhi, Punjab and West Uttar Pradesh.

**No Fishermen Warning**

**\*Red color warning does not mean "Red Alert" Red color warning means "Take Action"**  
Forecast and warning for any day is valid from 0830 hours IST of day till 0830 hours IST of next day  
For more details kindly visit <https://mausam.imd.gov.in> or contact 011-2434-4599  
(Service to the nation since 1875)



## Table-1

### 7 Days Rainfall Forecast

S.No.	Subdivision	30- Mar	31- Mar	1- Apr	2- Apr	3- Apr	4- Apr	5- Apr
		Day 1	Day 2	Day 3	Day 4	Day 5	Day 6	Day 7
1	ANDAMAN & NICOBAR ISLANDS	SCT	SCT	ISOL	DRY	DRY	DRY	DRY
2	ARUNACHAL PRADESH	FWS	FWS	WS	FWS	FWS	WS	FWS
3	ASSAM & MEHGHALAYA	FWS	FWS	FWS	FWS	SCT	ISOL	ISOL
4	N. M. M. & T.	FWS	FWS	SCT	SCT	ISOL	ISOL	ISOL
5	S.H. WEST BENGAL & SIKKIM	FWS	WS	FWS	SCT	SCT	SCT	SCT
6	GANGETIC WEST BENGAL	ISOL	FWS	ISOL	DRY	DRY	DRY	ISOL
7	ODISHA	ISOL	ISOL	ISOL	ISOL	ISOL	ISOL	ISOL
8	JHARKHAND	ISOL	ISOL	DRY	ISOL	ISOL	ISOL	ISOL
9	BIHAR	DRY	ISOL	ISOL	DRY	DRY	ISOL	SCT
10	EAST UTTAR PRADESH	ISOL	ISOL	ISOL	DRY	DRY	ISOL	ISOL
11	WEST UTTAR PRADESH	SCT	SCT	DRY	DRY	ISOL	SCT	SCT
12	UTTARAKHAND	SCT	SCT	ISOL	ISOL	SCT	SCT	SCT
13	HARYANA, CHD & DELHI	SCT	ISOL	ISOL	DRY	ISOL	SCT	SCT
14	PUNJAB	SCT	ISOL	ISOL	DRY	ISOL	SCT	SCT
15	HIMACHAL PRADESH	FWS	ISOL	ISOL	ISOL	FWS	FWS	SCT
16	JAMMU AND KASHMIR AND LADAKH	WS	SCT	ISOL	ISOL	SCT	SCT	ISOL
17	WEST RAJASTHAN	ISOL	ISOL	DRY	ISOL	ISOL	ISOL	DRY
18	EAST RAJASTHAN	SCT	ISOL	ISOL	ISOL	ISOL	ISOL	ISOL
19	WEST MADHYA PRADESH	SCT	ISOL	ISOL	ISOL	SCT	ISOL	ISOL
20	EAST MADHYA PRADESH	ISOL	ISOL	ISOL	ISOL	ISOL	ISOL	ISOL
21	GUJRAT REGION	ISOL	DRY	DRY	ISOL	ISOL	DRY	DRY
22	SAURASHTRA & KUTCH	ISOL	DRY	DRY	ISOL	ISOL	DRY	DRY
23	KONKAN & GOA	ISOL	ISOL	ISOL	ISOL	ISOL	ISOL	ISOL
24	MADHYA MAHARASHTRA	ISOL	ISOL	ISOL	ISOL	ISOL	ISOL	ISOL
25	MARATHWADA	ISOL	ISOL	ISOL	ISOL	ISOL	ISOL	ISOL
26	VIDARBHA	ISOL	ISOL	ISOL	ISOL	ISOL	ISOL	ISOL
27	CHATTISGARH	ISOL	ISOL	ISOL	ISOL	ISOL	ISOL	ISOL
28	COASTAL ANDHRA PRADESH	ISOL	ISOL	ISOL	ISOL	ISOL	ISOL	ISOL
29	TELANGANA	ISOL	ISOL	ISOL	ISOL	ISOL	ISOL	ISOL
30	RAYALASEEMA	ISOL	ISOL	ISOL	DRY	DRY	ISOL	ISOL
31	TAMILNADU & PUDUCHERRY	ISOL	ISOL	ISOL	ISOL	ISOL	ISOL	ISOL
32	COSTAL KARNATAKA	SCT	ISOL	ISOL	ISOL	ISOL	ISOL	ISOL
33	NORTH INTERIOR KARNATAKA	ISOL	ISOL	ISOL	ISOL	ISOL	ISOL	ISOL
34	SOUTH INTERIOR KARNATAKA	ISOL	ISOL	ISOL	ISOL	ISOL	ISOL	ISOL
35	KERALA	SCT	SCT	ISOL	ISOL	ISOL	SCT	SCT
36	LAKSHDWEEP	SCT	SCT	SCT	DRY	DRY	DRY	DRY

Legend	Category	%Stations
WS	Widespread/Most Places	76-100
FWS	Fairly Widespread/Many Places	51-75
SCT	Scattered/ A Few Places	26-50
ISOL	Isolated Places	1-25
DRY	No Rain	0

\*Red color warning does not mean "Red Alert" Red color warning means "Take Action"  
Forecast and warning for any day is valid from 0830 hours IST of day till 0830 hours IST of next day  
For more details kindly visit <https://mausam.imd.gov.in> or contact 011-2434-4599

(Service to the nation since 1875)

Fig. 1: Maximum Temperatures Dated 2026-03-29

Fig. 2: Departure of Maximum Temp. Dated 2026-03-29

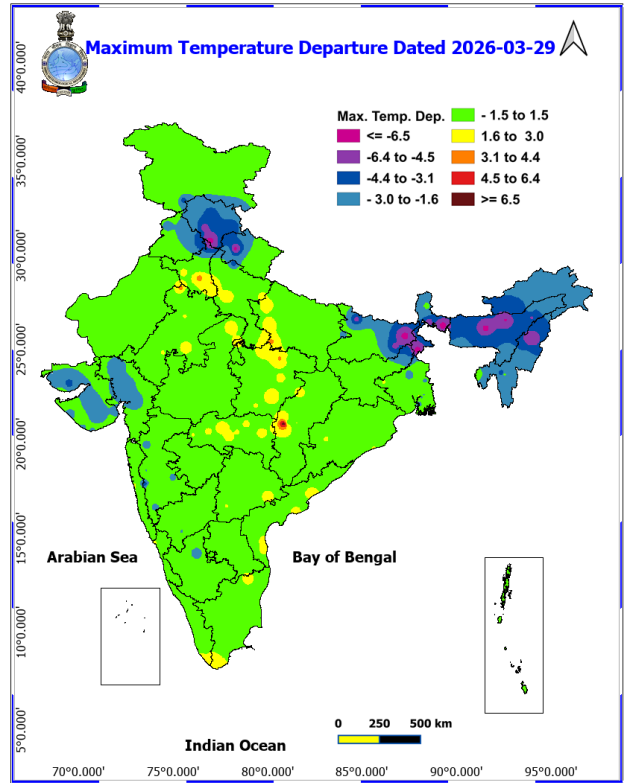
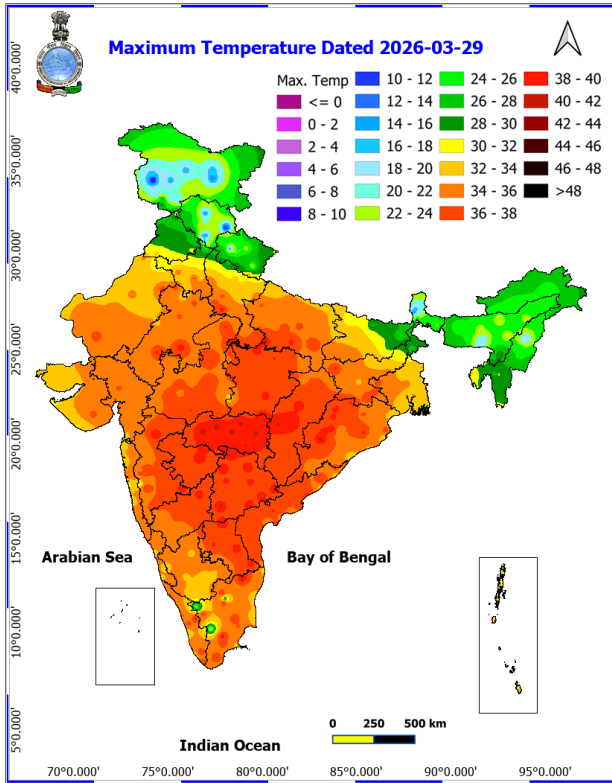
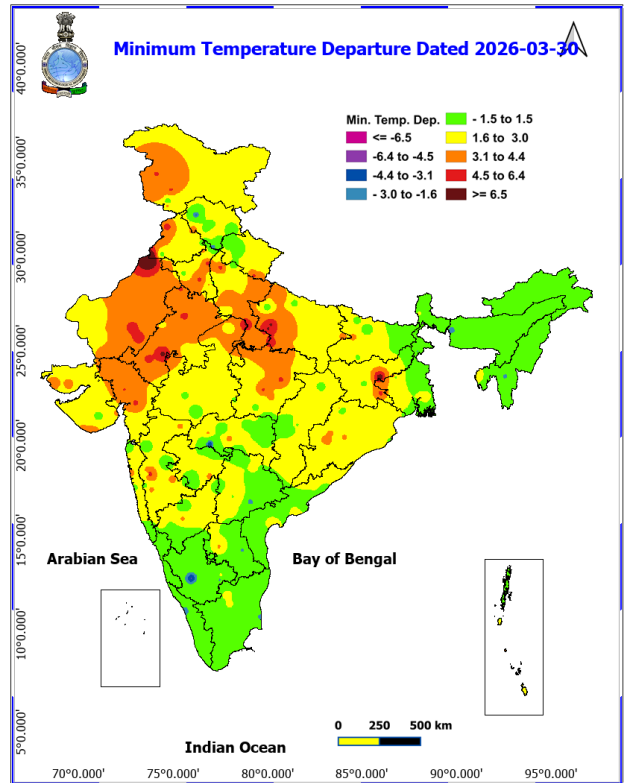
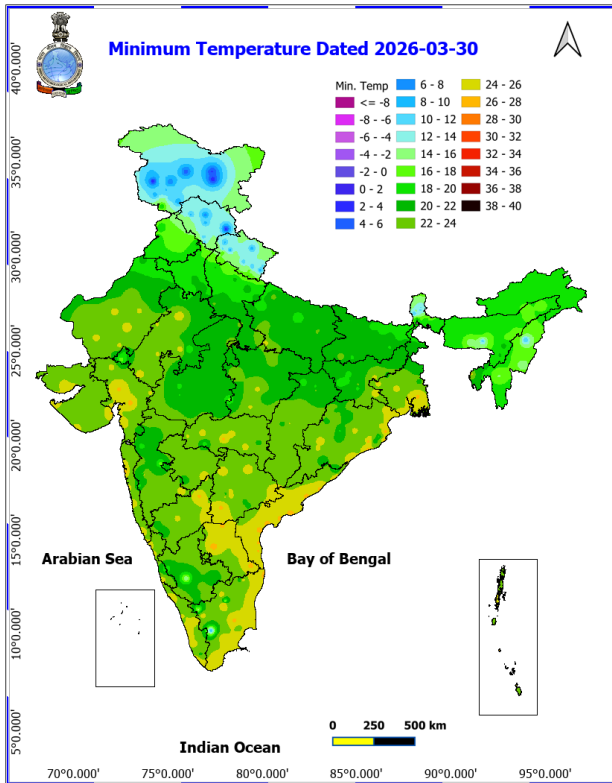
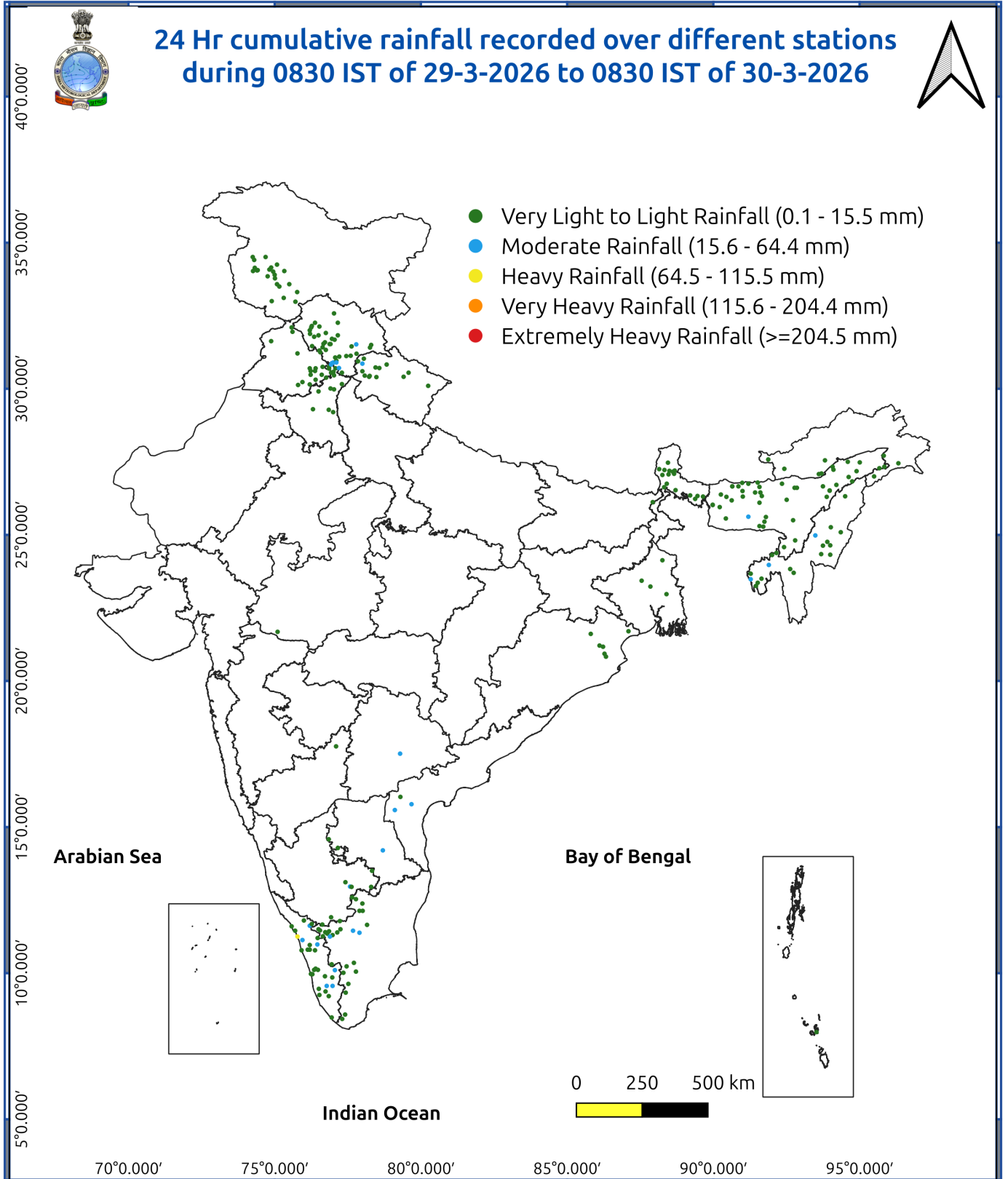


Fig. 3: Minimum Temperatures Dated 2026-03-30

Fig. 4: Departure of Minimum Temp. Dated 2026-03-30



**\*Red color warning does not mean "Red Alert" Red color warning means "Take Action"**  
Forecast and warning for any day is valid from 0830 hours IST of day till 0830 hours IST of next day  
For more details kindly visit <https://mausam.imd.gov.in> or contact 011-2434-4599  
(Service to the nation since 1875)



## Impact and Actions

### Impact & Action Suggested due to heavy/very heavy rainfall:

- **Isolated heavy rainfall/snowfall** likely over Kashmir valley on 30<sup>th</sup> March.
- **Isolated heavy rainfall** likely over Arunachal Pradesh 31<sup>st</sup> March & 01<sup>st</sup> April; Assam & Meghalaya during 30<sup>th</sup> March - 01<sup>st</sup> April and Nagaland, Manipur, Mizoram & Tripura on 30<sup>th</sup> & 31<sup>st</sup> March; Sub-Himalayan West Bengal & Sikkim on 31<sup>st</sup> March; Kerala & Mahe on 30<sup>th</sup> & 31<sup>st</sup> March; Coastal Karnataka on 30<sup>th</sup> March.

### Impact Expected

Localized Flooding of roads, water logging in low lying areas and closure of underpasses mainly in urban areas of the above region.

Occasional reduction in visibility due to heavy rainfall.

Disruption of traffic in major cities due to water logging in roads leading to increased travel time.

Minor damage to kutcha roads.

Possibilities of damage to vulnerable structure.

Localized Landslides/Mudslides

Damage to horticulture and standing crops in some areas due to inundation.

It may lead to riverine flooding in some river catchments (for riverine flooding please visit Web page of CWC).

### Action Suggested

Check for traffic congestion on your route before leaving for your destination.

Follow any traffic advisories that are issued in this regard.

Avoid going to areas that face the water logging problems often.

Avoid staying in vulnerable structure.

### Impact expected and action suggested due to

- **Isolated hailstorm activity also likely over Jammu-Kashmir, Himachal Pradesh, Uttarakhand, Punjab, Haryana Chandigarh & Delhi, West Uttar Pradesh and East Rajasthan on 30<sup>th</sup> March; Sub-Himalayan West Bengal & Sikkim, Bihar, Jharkhand and Odisha on 31<sup>st</sup> March; West Madhya Pradesh on 30<sup>th</sup> March and Vidarbha on 31<sup>st</sup> March & 01<sup>st</sup> April and Chhattisgarh during 30<sup>th</sup> March - 01<sup>st</sup> April Madhya Maharashtra and Marathwada on 30<sup>th</sup> & 31<sup>st</sup> March; Telangana and North Interior Karnataka on 30<sup>th</sup> March.**

### Impact expected:

- Breaking of tree branches, uprooting of large avenue trees. Large dead limbs blown from trees. Damage to Standing crops.
- Minor to Major damage to banana and papaya trees.
- Minor to major damage to power and communication lines due to breaking of branches.
- Strong wind/hail may damage plantation, horticulture and standing crops.

**\*Red color warning does not mean "Red Alert" Red color warning means "Take Action"**

Forecast and warning for any day is valid from 0830 hours IST of day till 0830 hours IST of next day

For more details kindly visit <https://mausam.imd.gov.in> or contact 011-2434-4599

(Service to the nation since 1875)

- Hail may injure people and cattle at open places.
- Partial damage to vulnerable structures due to strong winds.
- Minor damage to kutcha houses/walls and huts.
- Loose objects may fly.

#### Action suggested:

- People are advised to keep a watch on the weather for worsening conditions and be ready to move to safer places accordingly.
- Stay indoors, close windows & doors and avoid travel if possible.
- Take safe shelters; do not take shelter under trees.
- Do not lie on concrete floors and do not lean against concrete walls.
- Unplug electrical/ electronic appliances.
- Immediately get out of water bodies.
- Keep away from all the objects that conduct electricity.

#### Agromet advisories for various parts of the country

##### Agromet advisories for likely impact of Hailstorms

- Use hail nets or hail caps in fruit orchards and vegetable plants to protect them from mechanical damage in **Jammu & Kashmir, Himachal Pradesh, Punjab, Haryana, Rajasthan, Sub Himalayan West Bengal, West Madhya Pradesh, Madhya Maharashtra, Marathwada Vidarbha and Chhattisgarh.**

Undertake harvesting of mature crops immediately and shift them to safer places.

- In **Madhya Maharashtra, Marathwada and Vidarbha**, harvest mature wheat, sorghum, safflower, chickpea, maize, linseed, fruits and vegetables and keep the harvested produce in safe places.
- In **Uttarakhand**, harvest matured mustard, rapeseed, lentil & pea and keep the harvested produce to safe places.

##### Agromet advisories for likely impact of Heavy Rainfall

- In **Sub Himalayan West Bengal**, ensure proper drainage channel, and drain out excess water from fields of rice, maize, other standing crops, vegetables and orchard. Shift the harvested produce to safe places. Cover the nursery of cucurbits and Dalle khorsani with polyethylene sheets or agro-nets.
- In **Arunachal Pradesh**, undertake harvesting of cabbage, pea, mustard and late-maturing paddy varieties and digging of potatoes. Shift the harvested produce to safe places. Maintain proper drainage channels in the fields of rice, maize, other standing crops, vegetables and orchards.
- In **Assam**, drain out excess rainwater from the standing crop fields.
- In **Meghalaya**, ensure proper drainage in summer vegetable crops. Carry out staking and propping of plantation crops and protect young seedlings from heavy rainfall. Keep the harvested pods of garden peas in safer place immediately.
- In **Tripura**, make necessary arrangements to drain out excess water from the low lying areas to prevent water logging.
- In **Manipur**, harvest mature rapeseed/ mustard, field pea, lentil and onion before rain. Shift the harvested produce to an airy shed to protect it from rain, and sun-dry it when sunshine is available. Make necessary arrangements to drain out excess water from standing crops, vegetables & orchards to avoid water stagnation.
- In **Jammu & Kashmir**, make necessary arrangements to drain out excess rain water from wheat, gram, mustard and vegetable fields.

##### Agromet advisories for likely impact of Thunderstorm / Gusty Winds

- Shift the harvested produce in safer places or cover the produce with tarpaulin sheets in the fields. Tie the harvested crops properly and cover them to minimise the risk of displacement due to strong surface winds.

**\*Red color warning does not mean "Red Alert" Red color warning means "Take Action"**

Forecast and warning for any day is valid from 0830 hours IST of day till 0830 hours IST of next day

For more details kindly visit <https://mausam.imd.gov.in> or contact 011-2434-4599

(Service to the nation since 1875)

- Provide mechanical support to horticultural crops and staking or support to vegetables and young fruit plants / fruit-bearing plants to avoid lodging due to strong winds.

### Livestock / Poultry

Keep the animals inside the shed during Heavy Rainfall/Hailstorm period and provide them balanced feed. Store feed and fodder in a safe place to prevent spoilage.

---

### Legends & abbreviations:

#### Region wise classification of meteorological Sub-Divisions:

**Northwest India:** Western Himalayan Region (Jammu-Kashmir-Ladakh-Gilgit-Baltistan-Muzaffarabad, Himachal Pradesh and Uttarakhand); Punjab, Haryana-Chandigarh-Delhi; West Uttar Pradesh, East Uttar Pradesh, West Rajasthan and East Rajasthan.

**Central India:** West Madhya Pradesh, East Madhya Pradesh, Vidarbha and Chhattisgarh.

**East India:** Bihar, Jharkhand, Sub-Himalayan West Bengal & Sikkim; Gangetic West Bengal, Odisha and Andaman & Nicobar Islands.

**Northeast India:** Arunachal Pradesh, Assam & Meghalaya and Nagaland, Manipur, Mizoram & Tripura.

**West India:** Gujarat Region, Saurashtra & Kutch, Coastal Maharashtra (Konkan) & Goa, Madhya Maharashtra and Marathawada.

**South India:** Coastal Andhra Pradesh & Yanam, Telangana, Rayalaseema, Coastal Karnataka, North Interior Karnataka, South Interior Karnataka, Kerala & Mahe, Tamil Nadu, Puducherry & Karaikal and Lakshadweep.

## LEGENDS

- 1 अंडमान और निकोबार द्वीप समुह
- 2 अरुणाचल प्रदेश
- 3 असम और मेघालय
- 4 नागालैंड मनीपुर मीजोरम और त्रिपुरा
- 5 उप हिमालय पश्चिम बंगाल एवं सिक्किम
- 6 पश्चिम बंगाल
- 7 ओडिसा
- 8 झारखंड
- 9 बिहार
- 10 पूर्वी उत्तर प्रदेश
- 11 पश्चिम उत्तर प्रदेश
- 12 उत्तराखंड
- 13 हरियाणा चंडिगढ़ एवं दिल्ली
- 14 पंजाब
- 15 हिमाचल प्रदेश
- 16 जम्मू एवं कश्मीर एवं लद्दाख
- 17 पश्चिम राजस्थान
- 18 पूर्वी राजस्थान
- 19 पश्चिम मध्य प्रदेश
- 20 पूर्वी मध्य प्रदेश
- 21 गुजरात क्षेत्र
- 22 सौराष्ट्र एवं कच्छ
- 23 कोंकण एवं गोवा
- 24 मध्य महाराष्ट्र
- 25 मराठावाडा
- 26 विदर्भ
- 27 छत्तीसगढ़
- 28 तटीय आंध्र प्रदेश एवं चनम
- 29 तेलंगाना
- 30 रायलसीमा
- 31 तमिलनाडु, पुदुचेरी एवं कराईकल
- 32 तटिय कर्नाटक
- 33 आंतरिक उत्तरी कर्नाटक
- 34 आंतरिक दक्षिणी कर्नाटक
- 35 केरल एवं माहे
- 36 लक्षद्वीप



1. Andaman & Nicobar Islands
2. Arunachal Pradesh
3. Assam & Meghalaya
4. Nagaland, Manipur, Mizoram & Tripura
5. Sub-Himalayan West Bengal & Sikkim
6. Gangetic West Bengal
7. Orissa
8. Jharkhand
9. Bihar
10. East Uttar Pradesh
11. West Uttar Pradesh
12. Uttarakhand
13. Haryana, Chd & Delhi
14. Punjab
15. Himachal Pradesh
16. Jammu & Kashmir and Ladakh
17. West Rajasthan
18. East Rajasthan
19. West Madhya Pradesh
20. East Madhya Pradesh
21. Gujarat
22. Saurashtra
23. Konkan & Goa
24. Madhya Maharashtra
25. Marathawada
26. Vidharbha
27. Chhattisgarh
28. Coastal Andhra Pradesh & Yanam
29. Telangana
30. Rayalaseema
31. Tamilnadu, Puducherry & Karaikal
32. Coastal Karnataka
33. North Interior Karnataka
34. South Interior Karnataka
35. Kerala & Mahe
36. Lakshadweep

## SPATIAL DISTRIBUTION (% of Stations reporting)

% Stations	Category	% Stations	Category
76-100	Widespread (WS/ Most Places)	26-50	Scattered (SCT/ A Few Places)
51-75	Fairly Widespread (FWS/ Many Places)	1-25	Isolated (ISOL)

### Subdivision Colour

- NO WARNING
- WATCH (BE UPDATED)
- ALERT (BE PREPARED TO TAKE ACTION)
- WARNING (TAKE ACTION)

### Probabilistic Forecast

Terms	Probability of Occurrence (%)
Unlikely	< 25
Likely	25 - 50
Very Likely	50 - 75
Most Likely	> 75

- |                          |                 |                      |                    |
|--------------------------|-----------------|----------------------|--------------------|
| Heavy Rain               | Very Heavy Rain | Extremely Heavy Rain | Heavy Snow         |
| Thunderstorm & Lightning | Hailstorm       | Dust Storm           | Dust Raising Winds |
| Strong surface winds     | Heat Wave       | Hot Day              | Warm Night         |
| Cold Wave                | Cold Day        | Ground Frost         | Fog                |
| Hot & Humid              |                 |                      |                    |

\*Red color warning does not mean "Red Alert" Red color warning means "Take Action"

Forecast and warning for any day is valid from 0830 hours IST of day till 0830 hours IST of next day

For more details kindly visit <https://mausam.imd.gov.in> or contact 011-2434-4599

(Service to the nation since 1875)

## LEGENDS

### WARNING

WARNING (TAKE ACTION)
ALERT ( BE PREPARED)
WATCH (BE UPDATED)
NO WARNING ( NO ACTION)

### Probabilistic Forecast

Terms	Probability of Occurrence (%)
Unlikely	< 25
Likely	25 - 50
Very Likely	50 - 75
Most Likely	> 75



Heavy: 64.5 to 115.5 mm/cm \*  
Very Heavy: 115.6 to 204.4 mm/cm\*  
Extremely Heavy: > 204.4 mm/cm \*



When maximum temperature of a station reaches  $\geq 40^{\circ}\text{C}$  for plains and  $\geq 30^{\circ}\text{C}$  for hilly regions  
(a) Based on Departure from normal

Heat Wave: Maximum Temperature Departure from normal  $4.5^{\circ}\text{C}$  to  $6.4^{\circ}\text{C}$ .  
Severe Heat Wave: Maximum Temperature Departure from normal  $\geq 6.5^{\circ}\text{C}$

(b). Based on Actual maximum temperature

Heat Wave: When actual maximum temperature  $\geq 45^{\circ}\text{C}$ .  
Severe Heat Wave: When actual maximum temperature  $\geq 47^{\circ}\text{C}$

(c). Criteria for heat wave for coastal stations

When maximum temperature departure is  $> 4.5^{\circ}\text{C}$  from normal. Heat Wave may be described provided maximum temperature  $\geq 37^{\circ}\text{C}$



When maximum temperature remains  $40^{\circ}\text{C}$

Warm Night: When minimum temperature departure  $4.5^{\circ}\text{C}$  to  $6.4^{\circ}\text{C}$ .  
Severe Warm Night: When minimum temperature departure  $> 6.4^{\circ}\text{C}$ .



When minimum temperature of a station  $\leq 10^{\circ}\text{C}$  for plains and  $\leq 0^{\circ}\text{C}$  for hilly regions.  
(a). Based on departure

Cold Wave: Minimum Temperature Departure from normal  $-4.5^{\circ}\text{C}$  to  $-6.4^{\circ}\text{C}$ .  
Severe Cold Wave: Minimum Temperature Departure from normal  $\leq -6.5^{\circ}\text{C}$

(b) Based on actual Minimum Temperature (for Plains only)

Cold Wave : When Minimum Temperature is  $\leq 4.0^{\circ}\text{C}$   
Severe Cold Wave: When Minimum Temperature is  $\leq 2.0^{\circ}\text{C}$

(c) For Coastal Stations

When Minimum Temperature departure is  $\leq -4.5^{\circ}\text{C}$  & actual Minimum Temperature is  $\leq 15^{\circ}\text{C}$



When minimum temperature of a station  $\leq 10^{\circ}\text{C}$  for plains and  $\leq 0^{\circ}\text{C}$  for hilly regions  
Based on departure

Cold Day: Maximum Temperature Departure from normal  $-4.5^{\circ}\text{C}$  to  $-6.4^{\circ}\text{C}$ .  
Severe Cold Day: Maximum Temperature Departure from normal  $\leq -6.5^{\circ}\text{C}$



Phenomenon of small droplets suspended in air and the horizontal visibility  $< 1\text{km}$

Moderate Fog: When the visibility between 500-200 metres  
Dense Fog: when the visibility between 50- 200 metres  
Very Dense Fog: when the visibility  $< 50$  metres



Sudden electrical discharges manifested by a flash of light (Lightning) and a sharp rumbling sound (thunder)



An ensemble of particles of dust or sand energetically lifted to great heights by a strong and turbulent wind.



Ice deposits on ground

Air temperature  $\leq 4^{\circ}\text{C}$  ( over Plains)



A strong wind that rises suddenly, lasts for atleast 1 minute.

Moderate: Wind speed 52-61 kmph  
Severe: Wind speed 62-87 kmph  
Very Severe: Wind speed  $> 87$  kmph



Effect of various waves in the sea over specific area

Rough to very rough: Wind speed 41-62 kmph (22-33 knots) & Wave height 2.5-6 metre  
High to very high: Wind speed 63-117 kmph ( 34-63 knots) & Wave height 6-14 metre  
Phenomenal: Wind speed  $> 117$  kmph ( $> 63$  knots) & Wave height  $> 14$  metre



Cyclonic Storm: Wind speed 62-87 kmph (34-47 knots)  
Severe Cyclonic Storm: Wind speed 88-117 kmph (48-63 knots)  
Very Severe Cyclonic Storm: Wind speed 118-165 kmph (64 - 89 knots)  
Extremely Severe Cyclonic Storm: Wind speed 166-220 kmph (90 -119 knots)  
Super Cyclone Storm: Wind speed  $> 220$  kmph ( $> 119$  knots)

\*Red color warning does not mean "Red Alert" Red color warning means "Take Action"

Forecast and warning for any day is valid from 0830 hours IST of day till 0830 hours IST of next day

For more details kindly visit <https://mausam.imd.gov.in> or contact 011-2434-4599

(Service to the nation since 1875)