

2026-06-26

Time of Issue: 13:41:00 hours IST
(Mid-Day)

ALL INDIA WEATHER SUMMARY AND FORECAST BULLETIN

Significant Weather Features

Advance of Southwest Monsoon 2026:

- The **Northern Limit of Monsoon** continues to pass through 20°N/60°E, 20°N/65°E, 20°N/70°E, Surat, Indore, Mandla, Daltonganj, Motihari and 28.3°N/83°E as on 26th June.
- **Conditions are favourable** for further advance of southwest monsoon into some more parts of North Arabian Sea, Gujarat, Madhya Pradesh, remaining parts of Chhattisgarh, Jharkhand & Bihar, some parts of Uttar Pradesh & Uttarakhand during next 3-4 days.

Weather Forecast and Warnings:

Northeast India:

- **Fairly Widespread to Widespread** rainfall likely over Arunachal Pradesh and Nagaland, Manipur, Mizoram & Tripura during 26th June-2nd July; Assam & Meghalaya during 27th June-2nd July.
- **Isolated to Scattered** rainfall likely over Assam & Meghalaya on 26th June.
- Isolated **thunderstorm & lightning** likely over Arunachal Pradesh, Assam & Meghalaya and Nagaland, Manipur, Mizoram & Tripura during 26th-30th June.
- Isolated **heavy rainfall** likely over Arunachal Pradesh during 26th-27th June and on 30th June; Assam & Meghalaya on 26th June and on 2nd July; Nagaland, Manipur, Mizoram & Tripura during 26th-30th June with isolated **very heavy rainfall** also likely over Arunachal Pradesh during 28th-29th June; Assam & Meghalaya during 27th June-1st July.

West India:

- **Fairly Widespread to Widespread** rainfall likely over Konkan & Goa during 26th June-2nd July; Madhya Maharashtra on 27th June; Marathawada on 26th June.
- **Isolated to Scattered** rainfall likely over Madhya Maharashtra on 26th June and during 28th June-2nd July; Marathawada during 27th June-2nd July; Gujarat Region and Saurashtra & Kutch during 26th June-2nd July.
- Isolated **thunderstorm, lightning & gusty winds (speed reaching 40-50 kmph gusting to 60 kmph)** likely over Konkan & Goa, Madhya Maharashtra and Marathawada during 26th-29th June.
- Isolated **heavy rainfall** likely over Konkan & Goa during 26th-28th June and during 1st-2nd July; Madhya Maharashtra during 28th-29th June; Marathawada on 26th June.

South Peninsular India:

- **Isolated to Scattered** rainfall likely over Tamil Nadu, Puducherry & Karaikal during 26th June-2nd July; North Interior Karnataka during 30th June-1st July; South Interior Karnataka during 26th-27th June; Coastal Andhra Pradesh & Yanam during 29th June-2nd July; Rayalaseema on 26th June and during 28th June-2nd July; Telangana during 1st-2nd July.
- **Fairly Widespread to Widespread** rainfall likely over Coastal Karnataka, Kerala & Mahe and Lakshadweep during 26th June-2nd July; North Interior Karnataka during 26th-29th June and on 2nd July; South Interior Karnataka during 28th June-2nd July; Coastal Andhra Pradesh & Yanam during 26th-28th June; Rayalaseema on 27th June; Telangana during 26th-30th June.
- Isolated **thunderstorm, lightning & gusty winds (speed reaching 40-50 kmph gusting to 60 kmph)** likely over Tamil Nadu, Puducherry & Karaikal during 26th-29th June; Coastal Andhra Pradesh & Yanam, Kerala & Mahe, Lakshadweep and Rayalaseema during 26th-30th June; Telangana on 26th June, **with gusty winds (speed reaching 30-40 kmph gusting to 50 kmph)** likely over Coastal Karnataka during 28th-30th June; North Interior Karnataka during 26th June-2nd July; South Interior Karnataka during 26th-30th June; Telangana during 27th June-2nd July.

*Red color warning does not mean "Red Alert" Red color warning means "Take Action"

Forecast and warning for any day is valid from 0830 hours IST of day till 0830 hours IST of next day

For more details kindly visit <https://mausam.imd.gov.in> or contact 011-2434-4599

(Service to the nation since 1875)

- Isolated **heavy rainfall** likely over Tamil Nadu, Puducherry & Karaikal during 26th-29th June; Kerala & Mahe during 26th-28th June and during 1st-2nd July; Lakshadweep during 28th-29th June; Coastal Andhra Pradesh & Yanam, Coastal Karnataka and Telangana during 26th June-2nd July; North Interior Karnataka during 26th-27th June; South Interior Karnataka during 30th June-2nd July; Rayalaseema on 26th June with isolated **very heavy rainfall** also likely over Kerala & Mahe during 29th-30th June.
- Strong Surface Winds likely over North Interior Karnataka during 26th June-2nd July; South Interior Karnataka during 26th-28th June.

Heat Wave, Hot & Humid weather and Warm Night conditions warning:

- **Heat wave** conditions very likely in isolated pockets over West Uttar Pradesh during 26th-28th June; East Uttar Pradesh during 26th-28th June with **severe heat wave** conditions in isolated pockets during 26th-27th June.
- **Hot and humid** weather conditions likely to prevail over Odisha during 26th-27th June.

Forecast of maximum/day temperatures:

- Gradual rise in Maximum temperatures likely over Maharashtra by 2-4°C till 29th June and no significant change thereafter.
- No significant change in maximum temperatures likely over Central India till 26th June, gradual rise by 2-3°C during 27th -29th June and gradual fall by 2-3°C thereafter.
- No significant change in maximum temperatures likely over the rest parts of country till 02nd July, 2026.

Fisherman Warning:

- Fishermen are advised not to venture into the following areas:
- **Bay of Bengal:** Over Gulf of Mannar adjoining Comorin area, few parts of southwest Bay of Bengal adjoining parts of south Sri Lanka coasts during 26th June to 01st July; south Sri Lanka coasts, some parts of southwest & adjoining parts of southeast Bay of Bengal during 27th to 30th June; along & off north Andhra Pradesh coasts adjoining westcentral Bay of Bengal during 28th to 30th June; over Andaman Sea during 28th June to 01st July; over most parts of south Bay of Bengal on 01st July.
- **Arabian Sea:** Along and off Somalia coast adjoining southwest & westcentral Arabian Sea during 26th June to 01st July, 2026; along & off north Oman coast adjoining northwest Arabian Sea on 26th and during 28th to 30th June; along & off south Konkan, Goa, Karnataka, Kerala coasts adjoining eastcentral Arabian sea, Lakshadweep area during 27th June to 01st July.

Main Weather Observations:

- ❖ **Rainfall distribution** (from 0830 hours IST of yesterday to 0830 hours IST of today): **at most places** over Sub Himalayan West Bengal & Sikkim, Marathwada, Coastal Karnataka and Kerala & Mahe; **at many places** over Andaman & Nicobar Islands, Assam & Meghalaya, Nagaland, Manipur, Mizoram & Tripura, Konkan & Goa, Vidarbha, South Interior Karnataka and Lakshadweep; **at a few places** over Arunachal Pradesh, Gangetic West Bengal, Bihar, Uttarakhand, West Madhya Pradesh, East Madhya Pradesh, Telangana and North Interior Karnataka; **at isolated places** over Odisha, East Uttar Pradesh, Haryana-Chandigarh-Delhi, Punjab, Himachal Pradesh, Jammu-Kashmir-Ladakh-Gilgit-Baltistan-Muzaffarabad, West Rajasthan, East Rajasthan, Gujarat Region, Saurashtra & Kutch, Madhya Maharashtra, Chhattisgarh, Coastal Andhra Pradesh & Yanam, Rayalaseema and Tamil Nadu, Puducherry & Karaikal; **Dry** over rest of the country.
- ❖ **Significant rainfall recorded(in cm)** (from 0830 hours IST of yesterday to 0830 hours IST of today): **Arunachal Pradesh:** Deomali AWS (dist Tirap) 17; **Sub Himalayan West Bengal & Sikkim:** Nh31 Bridge (dist Jalpaiguri) 13; Raidak Tea Estate (dist Alipurduar) 11; Jhallong (dist Kalimpong), Newlands Tea Garden (dist Alipurduar), Patkapara Tea Estate (dist Alipurduar) 10 Each; Champasari (dist Darjeeling), Rongli (dist Pakyong), Kumargram Tea Estate (dist Alipurduar), Majherdabri Tea Garden (dist Alipurduar) 9 Each; Gajoldoba (dist Jalpaiguri), Sankos Tea Estate (dist Alipurduar) 8 Each; Suryasen Mahavidyalaya (dist Darjeeling), Dharala Valley Tea Estate (dist Jalpaiguri), Maynaguri College (dist Jalpaiguri) 7 Each; Alipurduar PTO (dist Alipurduar), Siliguri PTO (dist Darjeeling) 6 Each; **Nagaland, Manipur, Mizoram & Tripura:** Kanchanpur (dist North Tripura), Kanchanpur (dist North Tripura) 11 Each; Chhamonu (dist Dhalai), Mangkolemba (dist Mokokchung), Ashapara AWS (dist North Tripura) 7 Each; Teliamura Barage (dist Khowai), Ambassa (dist Dhalai) 6 Each; **Bihar:** Sheohar (dist Sheohar) 11; Bagaha (dist West Champaran) 9; Harlakhi (dist Madhubani) 7; Riga (dist Sitamarhi) 6; **Gangetic West Bengal:** Alipore (dist Kolkata) 9; Mo Saltlake (dist North 24 Parganas) 7; Amfu Kharagpur (dist West Midnapore) 6; **Assam & Meghalaya:** Umrangso (dist Dima Hasao) 8; Margherita (dist Tinsukia) 7; Bahalpur (dist Dhubri), Williamnagar (dist East Garo Hills), Udaipur (dist Tinsukia) 6 Each; **East Madhya Pradesh:** Waraseoni (dist Balaghat) 7; **Coastal Karnataka:** Honavar (dist Uttara Kannada) 6; **West Madhya Pradesh:** Pathari (dist Vidisha) 6; **Konkan & Goa:** Ratnagiri (dist Ratnagiri) 6; **Uttarakhand:** Mori (dist Uttarkashi) 6; **East Uttar Pradesh:** Birdghat (dist Gorakhpur) 6.
- ❖ **Heavy Rainfall observed** (from 0830 hours IST of yesterday to 0830 hours IST of today): **Heavy to very heavy rain** at isolated places over Arunachal Pradesh and Sub Himalayan West Bengal & Sikkim. **Heavy rain** at isolated places over Assam & Meghalaya, Nagaland, Manipur, Mizoram & Tripura, Gangetic West Bengal, Bihar, West Madhya Pradesh, East Madhya Pradesh and Konkan & Goa.
- ❖ **Minimum Temperature Departures (as on 26-06-2026): markedly above normal(> 5.1°C)** at few places over East Madhya Pradesh; at isolated places over Assam & Meghalaya, Nagaland, Manipur, Mizoram & Tripura, Odisha, Jharkhand, Bihar, East Uttar Pradesh, West Uttar Pradesh, Himachal Pradesh, West Rajasthan, West Madhya Pradesh, Gujarat Region and Saurashtra & Kutch. **appreciably above normal(3.1°C to 5.0°C)** at isolated places over Assam & Meghalaya, Sub Himalayan West Bengal & Sikkim, Gangetic West Bengal, Odisha, East Uttar Pradesh, West Uttar Pradesh, Haryana-Chandigarh-Delhi, West Rajasthan, West Madhya Pradesh, East Madhya Pradesh, Gujarat Region, Coastal Andhra Pradesh & Yanam and Tamil Nadu, Puducherry & Karaikal. **above normal(1.6°C to 3.0°C)** at many places over Chhattisgarh and Lakshadweep; at few places over Arunachal Pradesh, Odisha, Bihar, East Uttar Pradesh, Uttarakhand, Punjab, Gujarat Region, Coastal Andhra Pradesh & Yanam and Rayalaseema; at isolated places over Andaman & Nicobar Islands, Assam & Meghalaya, Sub Himalayan West Bengal & Sikkim, Gangetic West Bengal, West Uttar Pradesh, Haryana-Chandigarh-Delhi, Himachal Pradesh, West Rajasthan, East Rajasthan, West Madhya Pradesh, East Madhya Pradesh, Saurashtra & Kutch, Telangana, Tamil Nadu, Puducherry & Karaikal and Kerala & Mahe. **near normal(-1.5°C to 1.5°C)** at many places over Sub Himalayan West Bengal & Sikkim, Jharkhand, West Rajasthan, Saurashtra & Kutch, Konkan & Goa, Marathwada, Telangana, Rayalaseema, Tamil Nadu, Puducherry & Karaikal and Coastal Karnataka; at most places over Andaman & Nicobar Islands, Nagaland, Manipur, Mizoram & Tripura, Haryana-Chandigarh-Delhi, Himachal Pradesh, Jammu-Kashmir-Ladakh-Gilgit-Baltistan-Muzaffarabad, Madhya Maharashtra, Vidarbha, North Interior Karnataka, South Interior Karnataka and Kerala & Mahe; at few places over Arunachal Pradesh, Assam & Meghalaya, Gangetic West Bengal, Odisha, Bihar, West Uttar Pradesh, Uttarakhand, Punjab, East Rajasthan, West Madhya Pradesh, East Madhya Pradesh, Gujarat Region, Coastal Andhra Pradesh & Yanam and Lakshadweep; at isolated places over East Uttar Pradesh. **The lowest minimum temperature of 18.5°C** was reported at **JEUR (MAHARASHTRA)** over the Plains of India.

*Red color warning does not mean "Red Alert" Red color warning means "Take Action"

Forecast and warning for any day is valid from 0830 hours IST of day till 0830 hours IST of next day

For more details kindly visit <https://mausam.imd.gov.in> or contact 011-2434-4599

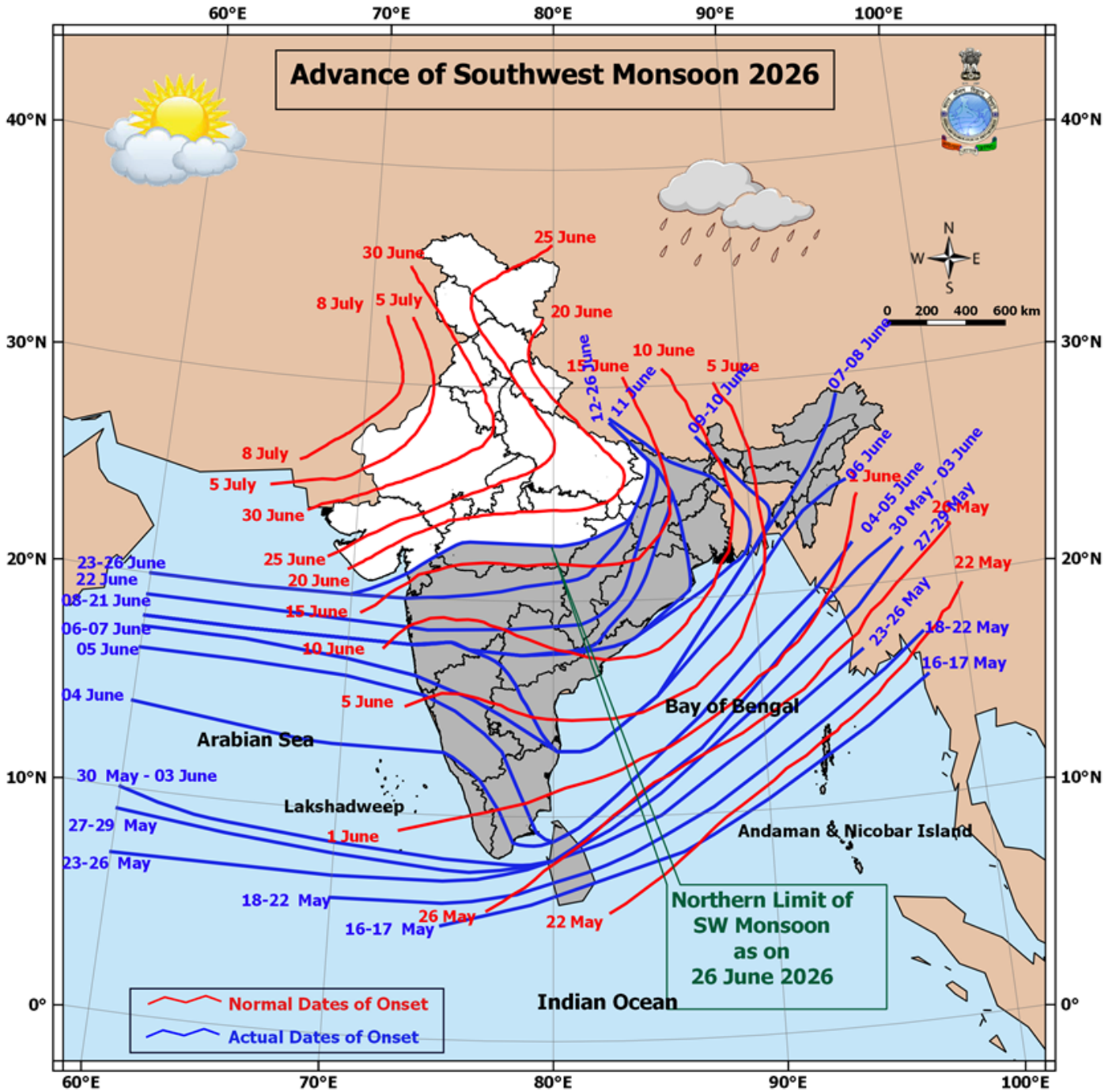
(Service to the nation since 1875)



❖ **Maximum Temperature Departures (as on 25-06-2026): markedly above normal(> 5.1°C)** at many places over Jammu-KashmirLadakh-Gilgit-Baltistan-Muzaffarabad; at most places over Arunachal Pradesh; at few places over Assam & Meghalaya, Haryana-Chandigarh-Delhi, Punjab and Himachal Pradesh; at isolated places over Sub Himalayan West Bengal & Sikkim, Jharkhand, East Uttar Pradesh, West Uttar Pradesh, Uttarakhand, West Rajasthan, Coastal Andhra Pradesh & Yanam and Tamil Nadu, Puducherry & Karaikal. **appreciably above normal(3.1°C to 5.0°C)** at isolated places over Nagaland, Manipur, Mizoram & Tripura, Odisha, Bihar, East Rajasthan, East Madhya Pradesh and Saurashtra & Kutch. **above normal(1.6°C to 3.0°C)** at few places over Gujarat Region; at isolated places over Gangetic West Bengal, West Madhya Pradesh and Konkan & Goa. **near normal(-1.5°C to 1.5°C)** at many places over Andaman & Nicobar Islands and Lakshadweep; at few places over Kerala & Mahe; at isolated places over Telangana and Rayalaseema. **The highest maximum temperature of 43.0°C** was reported at **PARYAGRAJ(EAST UTTAR PRADESH)**.

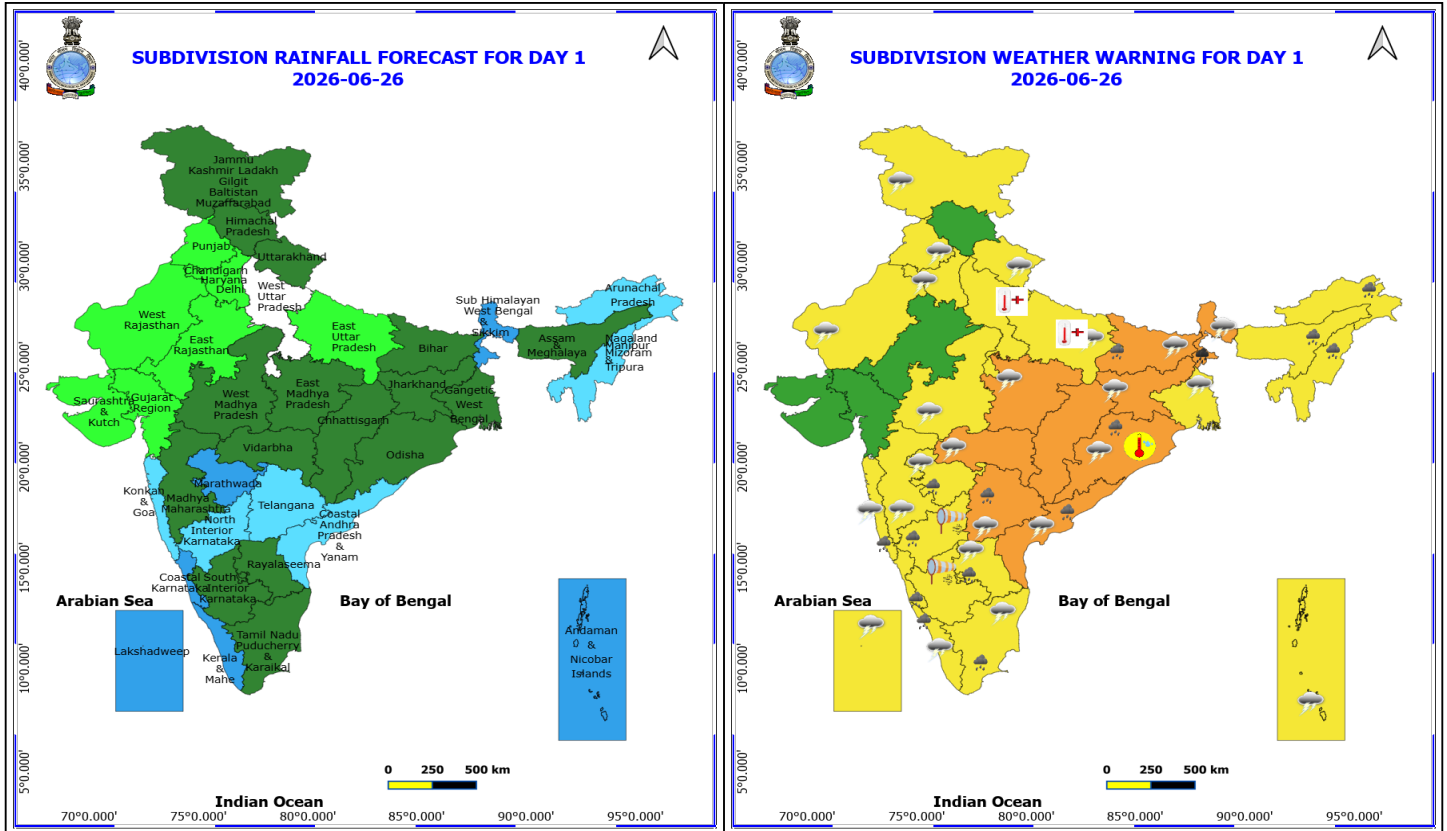
Meteorological Analysis (Based on 0830 hours IST)

- The **Northern Limit of Monsoon** continues to pass through 20°N/60°E, 20°N/65°E, 20°N/70°E, Surat, Indore, Mandla, Daltonganj, Motihari and 28.3°N/83°E as on 26th June.
- **Conditions are favourable** for further advance of southwest monsoon into some more parts of North Arabian Sea, Gujarat, Madhya Pradesh, remaining parts of Chhattisgarh, Jharkhand & Bihar, some parts of Uttar Pradesh & Uttarakhand during next 3-4 days.
- The **seasonal trough** at mean sea level now runs from Rajasthan to Odisha across north Madhya Pradesh and Chhattisgarh.
- An **upper air cyclonic circulation** lies over north Gujarat & Saurashtra between 3.1 & 5.8 km above mean sea level.
- The **upper air cyclonic circulation** over northeast & adjoining eastcentral Bay of Bengal lay over Northeast Bay of Bengal and adjoining Myanmar coast between 3.1 & 5.8 km above mean sea level.
- The **upper air cyclonic circulation** over southeast Madhya Pradesh & neighbourhood lay over north Telangana & neighbourhood between 3.1 km to 5.8 km above mean sea level tilting southwards with height.
- The **trough** from the upper **air cyclonic circulation** over southeast Madhya Pradesh & neighbourhood to Eastcentral Arabian Sea now runs from coastal Andhra Pradesh to Madhya Maharashtra across cyclonic circulation over Telangana & neighbourhood and Marathwada between 3.1 km & 4.5 km above mean sea level.
- A **trough** runs from east Uttar Pradesh to Telangana across East Madhya Pradesh, Vidarbha and Chhattisgarh & extends upto 1.5 km above mean sea level.
- The **Western Disturbance** as a cyclonic circulation over Haryana & neighbourhood between 3.1 & 7.6 km above mean sea level persists.
- The **upper air cyclonic circulation** over central Pakistan & adjoining north Rajasthan lay over north Punjab and adjoining Pakistan at 1.5 km above mean sea level.
- The **upper air cyclonic circulation** over Southeast Assam & neighbourhood at 0.9 km above mean sea level has become less marked.
- The **upper air cyclonic circulation** over Northern parts of central Madhya Pradesh & neighbourhood at 1.5 km above mean sea level has become less marked.



*Red color warning does not mean "Red Alert" Red color warning means "Take Action"
Forecast and warning for any day is valid from 0830 hours IST of day till 0830 hours IST of next day
For more details kindly visit <https://mausam.imd.gov.in> or contact 011-2434-4599

(Service to the nation since 1875)



26 June (Day 1)

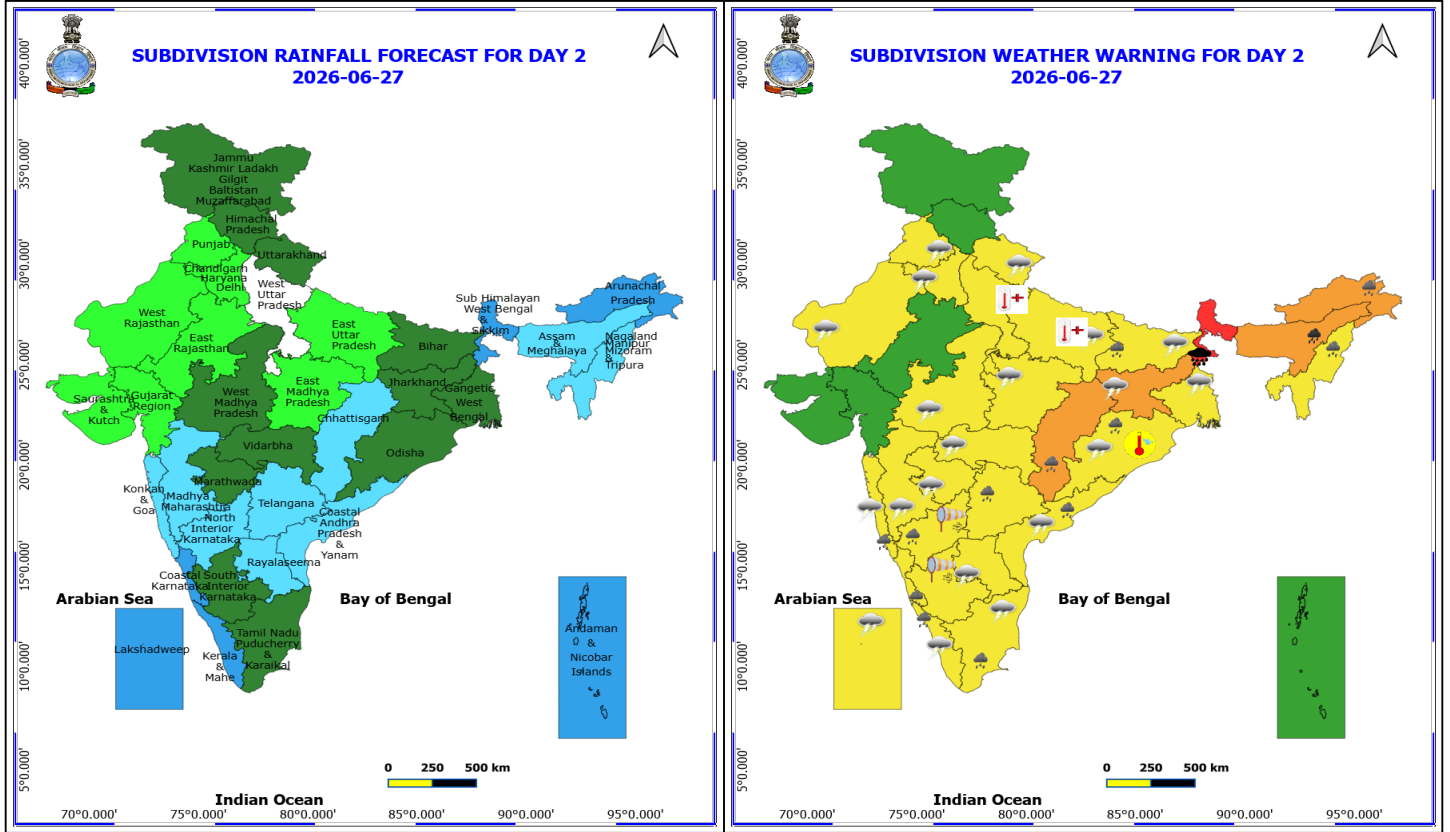
- ❖ **Heavy to Very Heavy Rainfall** very likely at isolated places over Sub Himalayan West Bengal & Sikkim.
- ❖ **Heavy Rainfall** very likely at isolated places over Andhra Pradesh, Arunachal Pradesh, Assam & Meghalaya, Bihar, Coastal Karnataka, Kerala & Mahe, Konkan & Goa, Marathwada, Nagaland, Manipur, Mizoram and Tripura, North Interior Karnataka, Odisha, Tamil Nadu Puducherry & Karaikal and Telangana.
- ❖ **Thundersquall with wind speed reaching(50-60kmph)** very likely at isolated places over Bihar and Jharkhand.
- ❖ **Thunderstorm accompanied with lightning & gusty winds(40-50kmph)** very likely at isolated places over Andaman & Nicobar Islands, Andhra Pradesh, East Uttar Pradesh, Haryana, Chandigarh & Delhi, Jammu-Kashmir-Ladakh-Gilgit-Baltistan-Muzaffarabad, Kerala & Mahe, Konkan & Goa, Lakshadweep, Madhya Pradesh, Maharashtra, Odisha, Punjab, Tamil Nadu Puducherry & Karaikal, Telangana, Uttarakhand, West Bengal & Sikkim and West Rajasthan.
- ❖ **Thunderstorm accompanied with lightning & gusty winds(30-40kmph)** very likely at isolated places over East Rajasthan and Interior Karnataka.
- ❖ **Thunderstorm accompanied with Lightning** very likely at isolated places over Arunachal Pradesh, Assam & Meghalaya, Chhattisgarh and Nagaland, Manipur, Mizoram and Tripura.
- ❖ **Strong Surface Winds** very likely at isolated places over Interior Karnataka.
- ❖ **Heat Wave conditions** very likely at isolated places over West Uttar Pradesh.
- ❖ **Heat Wave to Severe Heat Wave conditions** very likely at isolated places over East Uttar Pradesh.

***Red color warning does not mean "Red Alert" Red color warning means "Take Action"**
 Forecast and warning for any day is valid from 0830 hours IST of day till 0830 hours IST of next day
 For more details kindly visit <https://mausam.imd.gov.in> or contact 011-2434-4599
 (Service to the nation since 1875)

❖ **Hot and Humid weather** very likely at isolated places over Odisha.

❖ **Arabian Sea: Squally wind with speed 45-55 kmph gusting to 65 kmph** is likely to prevail along and off Somalia coasts some parts of southwest & adjoining westcentral Arabian Sea, along and off north Oman coasts adjoining few parts of northwest Bay of Bengal.

❖ **Bay of Bengal: Squally Weather with wind speed 40-50 kmph gusting to 60 kmph** is likely to prevail over Gulf of Mannar adjoining Comorin area, along and off south Sri Lanka, few parts of southwest Bay of Bengal.

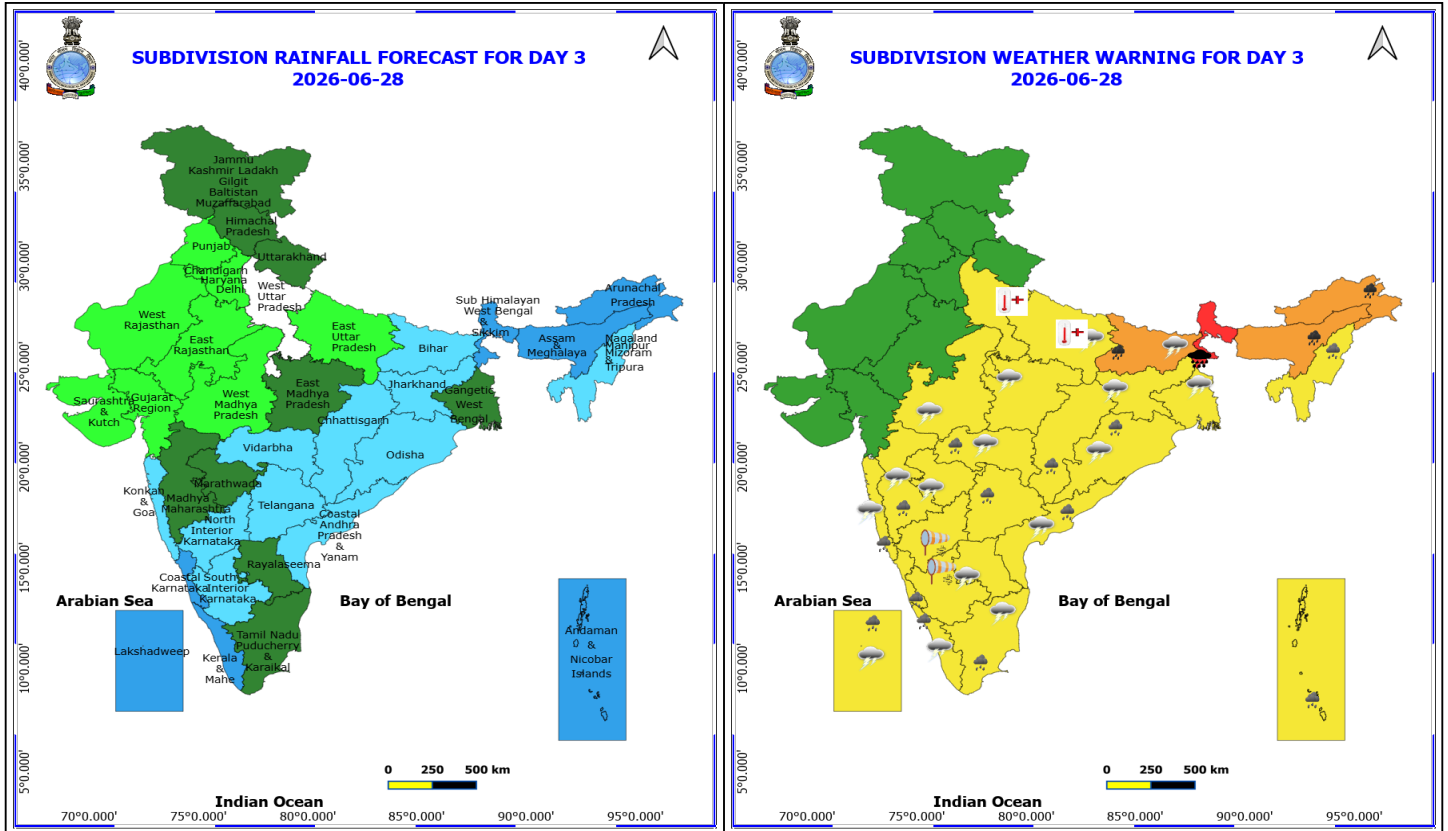


27 June (Day 2)

- ❖ **Heavy to Very Heavy Rainfall with isolated Extremely Heavy Rainfall** very likely at isolated places over Sub Himalayan West Bengal & Sikkim.
- ❖ **Heavy to Very Heavy Rainfall** very likely at isolated places over Assam & Meghalaya.
- ❖ **Heavy Rainfall** very likely at isolated places over Arunachal Pradesh, Bihar, Chhattisgarh, Coastal Andhra Pradesh, Coastal Karnataka, Kerala & Mahe, Konkan & Goa, Nagaland, Manipur, Mizoram and Tripura, North Interior Karnataka, Odisha, Tamil Nadu Puducherry & Karaikal and Telangana.
- ❖ **Thundersquall with wind speed reaching(50-60kmph)** very likely at isolated places over Jharkhand.
- ❖ **Thunderstorm accompanied with lightning & gusty winds(40-50kmph)** very likely at isolated places over Andhra Pradesh, Bihar, East Uttar Pradesh, Gangetic West Bengal, Haryana, Chandigarh & Delhi, Kerala & Mahe, Konkan & Goa, Lakshadweep, Madhya Pradesh, Maharashtra, Odisha, Punjab, Tamil Nadu Puducherry & Karaikal, Uttarakhand and West Rajasthan.
- ❖ **Thunderstorm accompanied with lightning & gusty winds(30-40kmph)** very likely at isolated places over East Rajasthan, Interior Karnataka, Sub Himalayan West Bengal & Sikkim and Telangana.
- ❖ **Thunderstorm accompanied with Lightning** very likely at isolated places over Arunachal Pradesh, Assam & Meghalaya, Chhattisgarh and Nagaland, Manipur, Mizoram and Tripura.
- ❖ **Strong Surface Winds** very likely at isolated places over Interior Karnataka.
- ❖ **Heat Wave conditions** very likely at isolated places over West Uttar Pradesh.

***Red color warning does not mean "Red Alert" Red color warning means "Take Action"**
 Forecast and warning for any day is valid from 0830 hours IST of day till 0830 hours IST of next day
 For more details kindly visit <https://mausam.imd.gov.in> or contact 011-2434-4599
 (Service to the nation since 1875)

- ❖ **Heat Wave to Severe Heat Wave conditions** very likely at isolated places over East Uttar Pradesh.
 - ❖ **Hot and Humid weather** very likely at isolated places over Odisha.
-
- ❖ **Arabian Sea: Squally wind with speed 45-55 kmph gusting to 65 kmph** is likely to prevail along and off Somalia coasts, some parts of southwest adjoining westcentral Arabian Sea.
 - ❖ **Squally weather with wind speed 40-50 gusting to 60 kmph** is likely to prevail along & off south Konkan, Goa, Karnataka, Kerala coasts, Lakshadweep area & adjoining Sea area.
 - ❖ **Bay of Bengal: Squally Weather with wind speed 40-50 kmph gusting to 60 kmph** is likely to prevail over Gulf of Mannar adjoining Comorin area, few parts of southwest Bay of Bengal.



28 June (Day 3)

- ❖ **Heavy to Very Heavy Rainfall with isolated Extremely Heavy Rainfall** very likely at isolated places over Sub Himalayan West Bengal & Sikkim.
- ❖ **Heavy to Very Heavy Rainfall** very likely at isolated places over Arunachal Pradesh, Assam & Meghalaya and Bihar.
- ❖ **Heavy Rainfall** very likely at isolated places over Andaman & Nicobar Islands, Chhattisgarh, Coastal Andhra Pradesh, Coastal Karnataka, Kerala & Mahe, Konkan & Goa, Lakshadweep, Madhya Maharashtra, Nagaland, Manipur, Mizoram and Tripura, Odisha, Tamil Nadu Puducherry & Karaikal, Telangana and Vidarbha.
- ❖ **Thunderstorm accompanied with lightning & gusty winds(40-50kmph)** very likely at isolated places over Andhra Pradesh, Bihar, East Uttar Pradesh, Gangetic West Bengal, Jharkhand, Kerala & Mahe, Konkan & Goa, Lakshadweep, Madhya Pradesh, Maharashtra, Odisha and Tamil Nadu Puducherry & Karaikal.
- ❖ **Thunderstorm accompanied with lightning & gusty winds(30-40kmph)** very likely at isolated places over Karnataka, Rajasthan, Sub Himalayan West Bengal & Sikkim, Telangana and Uttarakhand.
- ❖ **Thunderstorm accompanied with Lightning** very likely at isolated places over Arunachal Pradesh, Assam & Meghalaya, Chhattisgarh and Nagaland, Manipur, Mizoram and Tripura.
- ❖ **Strong Surface Winds** very likely at isolated places over Interior Karnataka.
- ❖ **Heat Wave conditions** very likely at isolated places over Uttar Pradesh.
- ❖ **Arabian Sea: Squally wind with speed 45-55 kmph gusting to 65 kmph** is likely to prevail along and off Somalia coasts, some parts of southwest & adjoining westcentral Arabian Sea; Over North Oman coast adjoining

***Red color warning does not mean "Red Alert" Red color warning means "Take Action"**

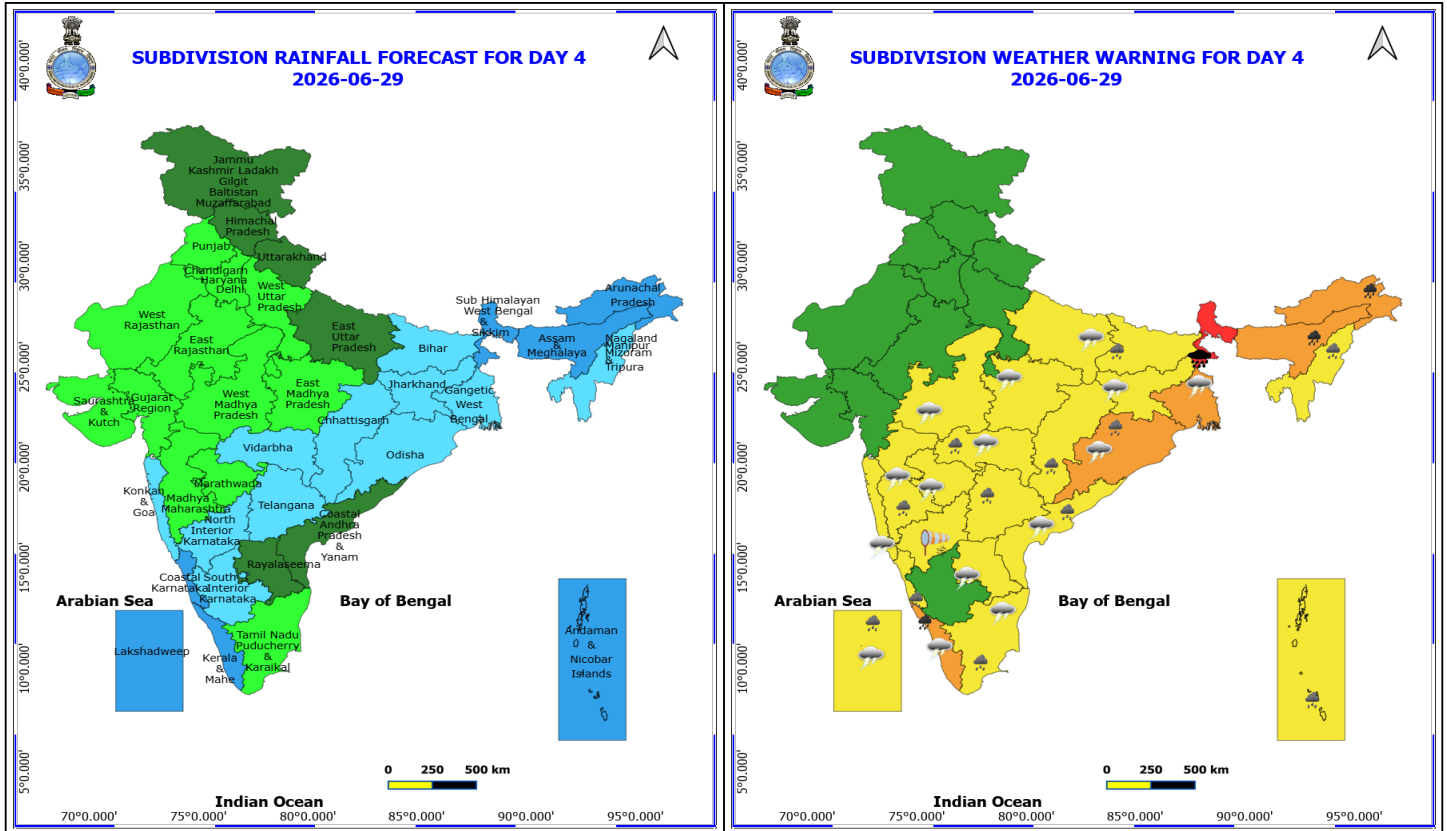
Forecast and warning for any day is valid from 0830 hours IST of day till 0830 hours IST of next day

For more details kindly visit <https://mausam.imd.gov.in> or contact 011-2434-4599

(Service to the nation since 1875)

northwest Arabian Sea.

- ❖ **Squally weather with wind speed 40-50 gusting to 60 kmph** is likely to prevail along & off south Konkan, Goa, Karnataka, Kerala coasts, Lakshadweep area & adjoining sea area.
- ❖ **Bay of Bengal: Squally Weather with wind speed 40-50 kmph gusting to 60 kmph** is likely to prevail over Gulf of Mannar adjoining Comorin area, south Sri Lanka adjoining some parts of southwest Bay of Bengal, along and off north coastal Andhra Pradesh and over Andaman Sea.



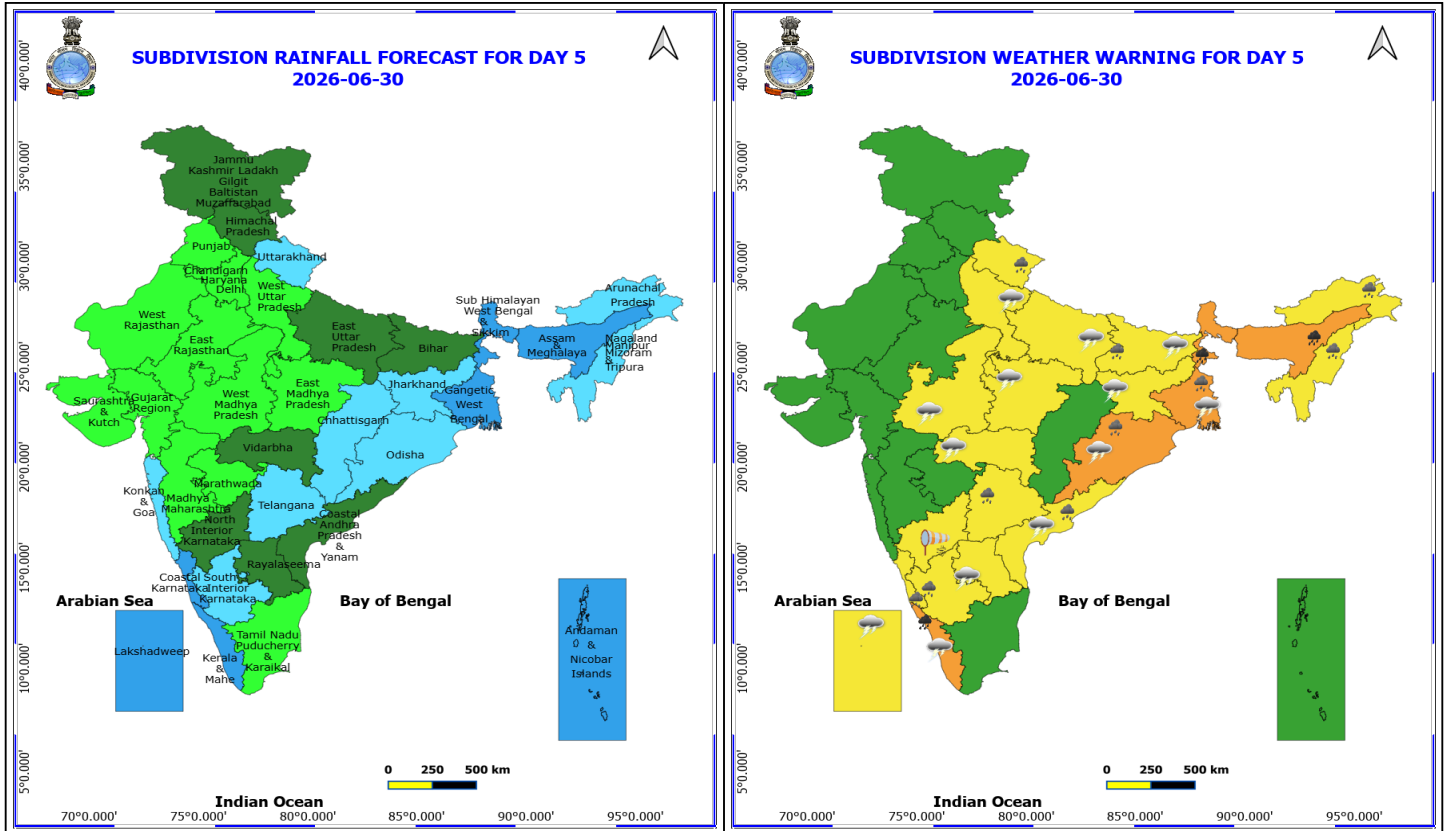
29 June (Day 4)

- ❖ **Heavy to Very Heavy Rainfall with isolated Extremely Heavy Rainfall** likely at isolated places over Sub Himalayan West Bengal & Sikkim.
 - ❖ **Heavy to Very Heavy Rainfall** likely at isolated places over Arunachal Pradesh, Assam & Meghalaya and Kerala & Mahe.
 - ❖ **Heavy Rainfall** likely at isolated places over Andaman & Nicobar Islands, Bihar, Chhattisgarh, Coastal Andhra Pradesh, Coastal Karnataka, Lakshadweep, Madhya Maharashtra, Nagaland, Manipur, Mizoram and Tripura, Odisha, Tamil Nadu Puducherry & Karaikal, Telangana and Vidarbha.
 - ❖ **Thunderstorm accompanied with lightning & gusty winds(40-50kmph)** likely at isolated places over Andhra Pradesh, East Uttar Pradesh, Gangetic West Bengal, Jharkhand, Kerala & Mahe, Konkan & Goa, Lakshadweep, Madhya Pradesh, Maharashtra, Odisha and Tamil Nadu Puducherry & Karaikal.
 - ❖ **Thunderstorm accompanied with lightning & gusty winds(30-40kmph)** likely at isolated places over Bihar, Karnataka, Rajasthan, Sub Himalayan West Bengal & Sikkim, Telangana and Uttarakhand.
 - ❖ **Thunderstorm accompanied with Lightning** likely at isolated places over Arunachal Pradesh, Assam & Meghalaya, Chhattisgarh and Nagaland, Manipur, Mizoram and Tripura.
 - ❖ **Strong Surface Winds** likely at isolated places over North Interior Karnataka.
-
- ❖ **Arabian Sea: Squally wind with speed 45-55 kmph gusting to 65 kmph** is likely to prevail along and off Somalia coasts, some parts of southwest & adjoining westcentral Arabian Sea; Over North Oman coast adjoining northwest Arabian Sea.

***Red color warning does not mean "Red Alert" Red color warning means "Take Action"**
 Forecast and warning for any day is valid from 0830 hours IST of day till 0830 hours IST of next day
 For more details kindly visit <https://mausam.imd.gov.in> or contact 011-2434-4599



- ❖ **Squally weather with wind speed 40-50 gusting to 60 kmph** is likely to prevail along & off south Konkan, Goa, Karnataka, Kerala coasts, Lakshadweep area & adjoining sea area.
- ❖ **Bay of Bengal: Squally Weather with wind speed 40-50 kmph** gusting to 60 kmph is likely to prevail over Gulf of Mannar adjoining Comorin area, south Sri Lanka adjoining some parts of southwest & adjoining southeast Bay of Bengal, along and off north coastal Andhra Pradesh and over Andaman Sea.
- ❖ Squally wind with speed 45-55 kmph gusting to 65 kmph is likely to prevail over some parts of southwest & adjoining southeast Bay of Bengal.



30 June (Day 5)

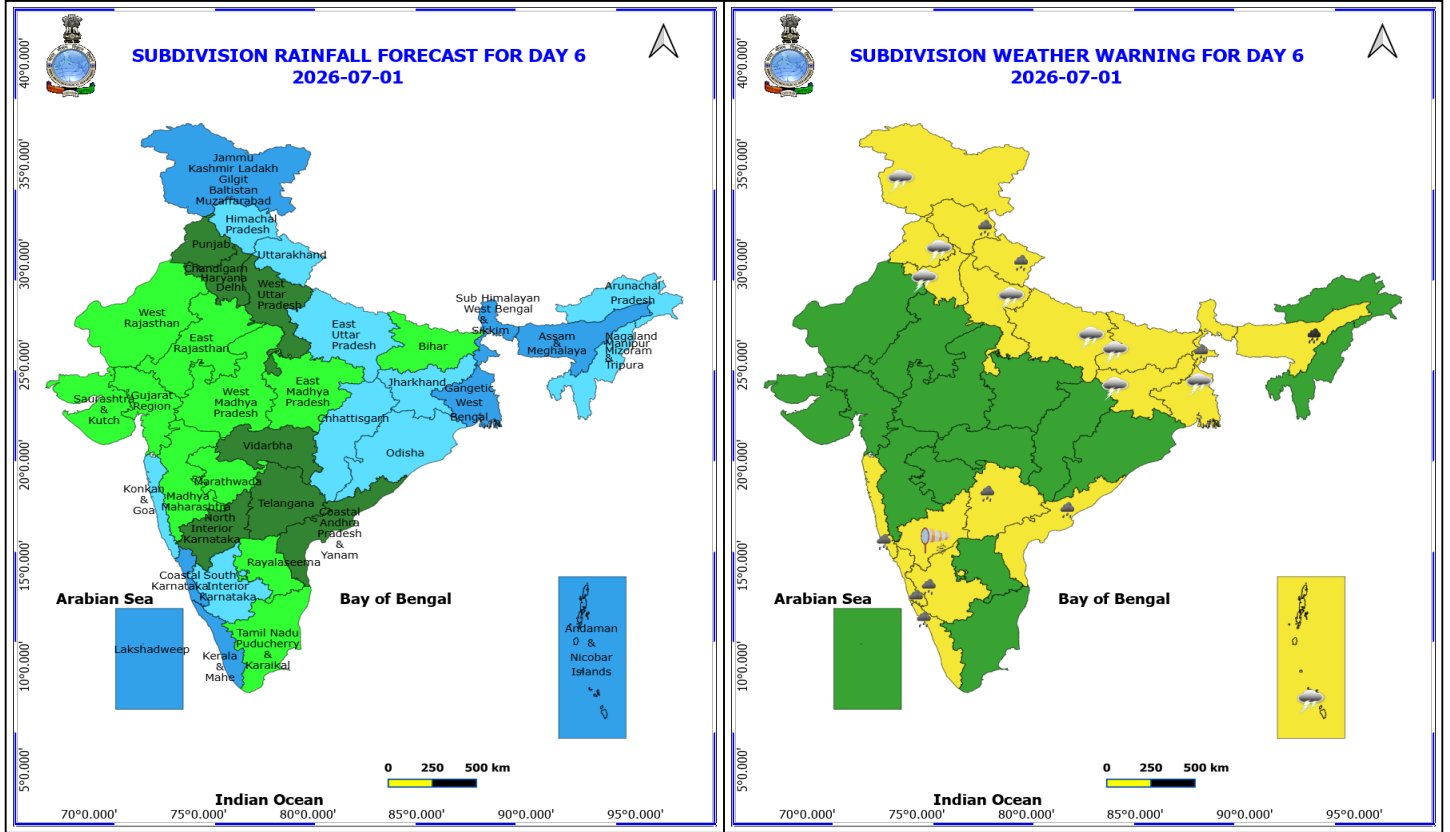
- ❖ **Heavy to Very Heavy Rainfall** likely at isolated places over Assam & Meghalaya, Kerala & Mahe and Sub Himalayan West Bengal & Sikkim.
 - ❖ **Heavy Rainfall** likely at isolated places over Arunachal Pradesh, Bihar, Coastal Andhra Pradesh, Coastal Karnataka, Gangetic West Bengal, Nagaland, Manipur, Mizoram and Tripura, Odisha, South Interior Karnataka, Telangana and Uttarakhand.
 - ❖ **Thunderstorm accompanied with lightning & gusty winds(40-50kmph)** likely at isolated places over Andhra Pradesh, Bihar, Gangetic West Bengal, Jharkhand, Kerala & Mahe, Lakshadweep, Madhya Pradesh, Odisha, Uttar Pradesh and Vidarbha.
 - ❖ **Thunderstorm accompanied with lightning & gusty winds(30-40kmph)** likely at isolated places over Karnataka, Rajasthan, Sub Himalayan West Bengal & Sikkim and Telangana.
 - ❖ **Thunderstorm accompanied with Lightning** likely at isolated places over Arunachal Pradesh, Assam & Meghalaya, Chhattisgarh, Nagaland, Manipur, Mizoram and Tripura and Uttarakhand.
 - ❖ **Strong Surface Winds** likely at isolated places over North Interior Karnataka.
-
- ❖ **Arabian Sea: Squally wind with speed 45-55 kmph gusting to 65 kmph** is likely to prevail along and off Somalia coasts, some parts of southwest & adjoining westcentral Arabian Sea; Over North Oman coast adjoining northwest Arabian Sea.
 - ❖ **Squally weather with wind speed 40-50 gusting to 60 kmph** is likely to prevail along & off south Konkan, Goa, Karnataka, Kerala coasts, Lakshadweep area & adjoining sea area.

***Red color warning does not mean "Red Alert" Red color warning means "Take Action"**
 Forecast and warning for any day is valid from 0830 hours IST of day till 0830 hours IST of next day
 For more details kindly visit <https://mausam.imd.gov.in> or contact 011-2434-4599

(Service to the nation since 1875)



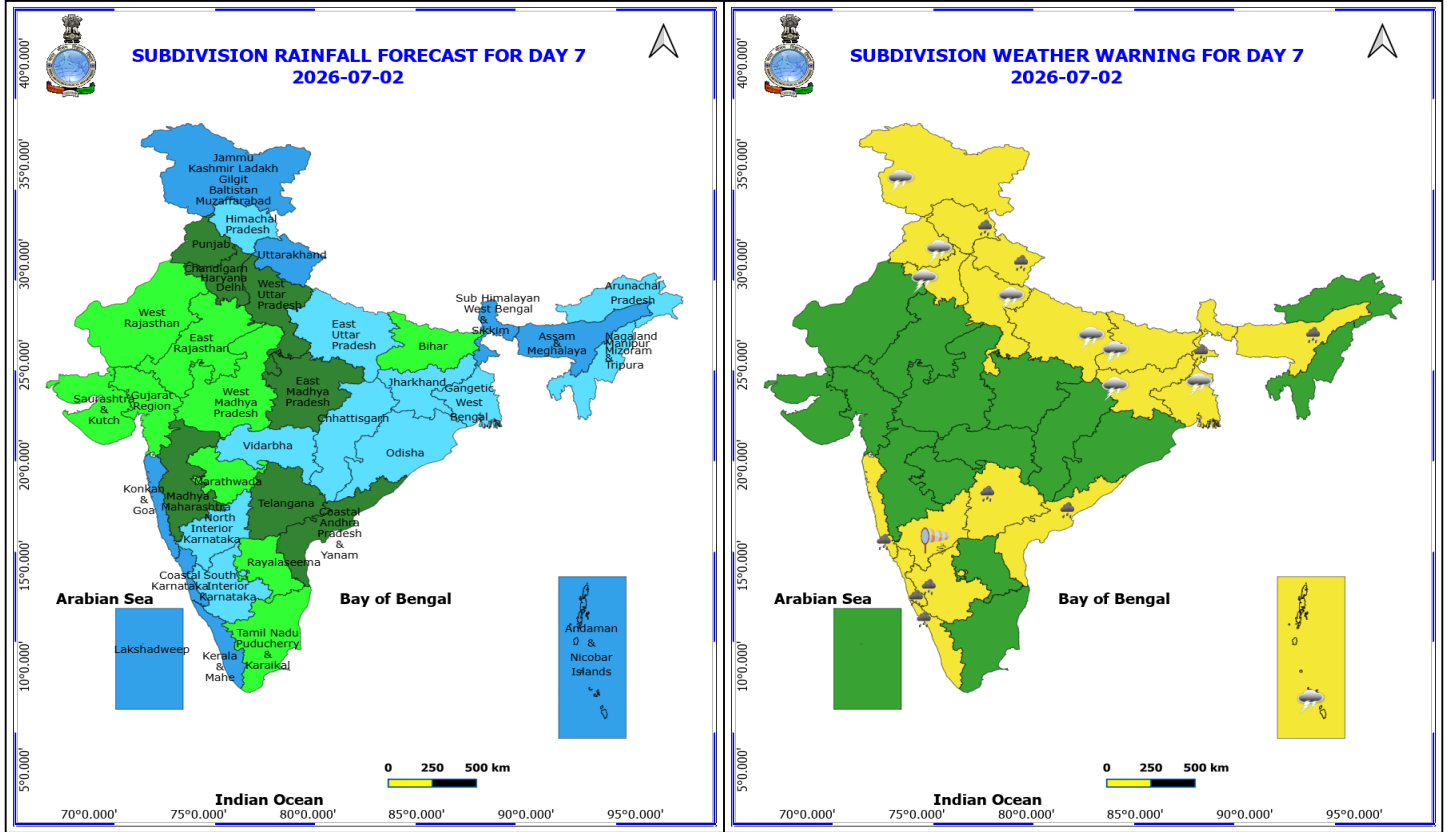
- ❖ **Bay of Bengal: Squally Weather with wind speed 40-50 kmph** gusting to 60 kmph is likely to prevail over Gulf of Mannar adjoining Comorin area and over Andaman Sea.
- ❖ **Squally wind with speed 45-55 kmph gusting to 65 kmph** is likely to prevail over most parts of south Bay of Bengal.



1 July (Day 6)

- ❖ **Heavy to Very Heavy Rainfall** likely at isolated places over Assam & Meghalaya.
- ❖ **Heavy Rainfall** likely at isolated places over Coastal Andhra Pradesh, Coastal Karnataka, Himachal Pradesh, Kerala & Mahe, Konkan & Goa, South Interior Karnataka, Sub Himalayan West Bengal & Sikkim, Telangana and Uttarakhand.
- ❖ **Thunderstorm accompanied with lightning & gusty winds(40-50kmph)** likely at isolated places over Andaman & Nicobar Islands, Bihar, Gangetic West Bengal, Haryana, Chandigarh & Delhi, Jammu-Kashmir-Ladakh-Gilgit-Baltistan-Muzaffarabad, Jharkhand, Punjab and Uttar Pradesh.
- ❖ **Thunderstorm accompanied with lightning & gusty winds(30-40kmph)** likely at isolated places over North Interior Karnataka, Rajasthan, Sub Himalayan West Bengal & Sikkim and Telangana.
- ❖ **Thunderstorm accompanied with Lightning** likely at isolated places over Uttarakhand.
- ❖ **Strong Surface Winds** likely at isolated places over North Interior Karnataka.

No Fishermen Warning



2 July (Day 7)

- ❖ **Heavy Rainfall** likely at isolated places over Assam & Meghalaya, Coastal Andhra Pradesh, Coastal Karnataka, Himachal Pradesh, Kerala & Mahe, Konkan & Goa, South Interior Karnataka, Sub Himalayan West Bengal & Sikkim, Telangana and Uttarakhand.
- ❖ **Thunderstorm accompanied with lightning & gusty winds(40-50kmph)** likely at isolated places over Andaman & Nicobar Islands, Bihar, Gangetic West Bengal, Haryana, Chandigarh & Delhi, Jammu-Kashmir-Ladakh-Gilgit-Baltistan-Muzaffarabad, Jharkhand, Punjab and Uttar Pradesh.
- ❖ **Thunderstorm accompanied with lightning & gusty winds(30-40kmph)** likely at isolated places over North Interior Karnataka, Rajasthan, Sub Himalayan West Bengal & Sikkim and Telangana.
- ❖ **Thunderstorm accompanied with Lightning** likely at isolated places over Uttarakhand.
- ❖ **Strong Surface Winds** likely at isolated places over North Interior Karnataka.

No Fishermen Warning

***Red color warning does not mean "Red Alert" Red color warning means "Take Action"**
Forecast and warning for any day is valid from 0830 hours IST of day till 0830 hours IST of next day
For more details kindly visit <https://mausam.imd.gov.in> or contact 011-2434-4599

(Service to the nation since 1875)

Flash Flood Warnings

24 hours Outlook for the Flash Flood Risk (FFR) till 0530 IST of 27-06-2026 :

Low to Moderate flash flood risk likely over few watersheds & neighbourhoods of following Met Sub-divisions during next 24 hours.

Arunachal Pradesh: Changlang Papum Pare, Lower Subansiri and Triap districts

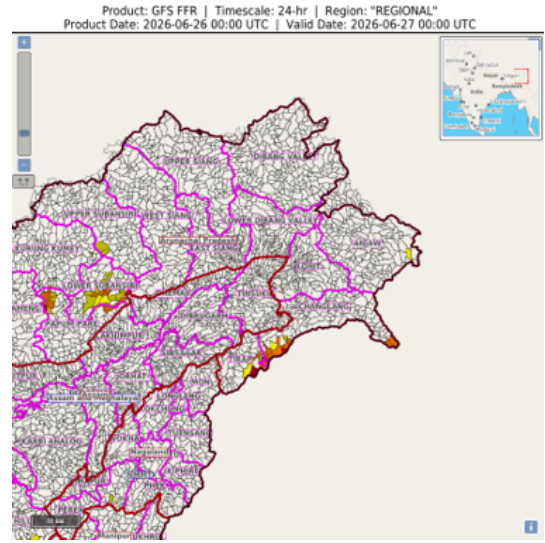




Table-1

7 Days Rainfall Forecast

S.No.	Subdivision	26- Jun	27- Jun	28- Jun	29- Jun	30- Jun	1- Jul	2- Jul
		Day 1	Day 2	Day 3	Day 4	Day 5	Day 6	Day 7
1	ANDAMAN & NICOBAR ISLANDS	WS	WS	WS	WS	WS	WS	WS
2	ARUNACHAL PRADESH	FWS	WS	WS	WS	FWS	FWS	FWS
3	ASSAM & MEHGHALAYA	SCT	FWS	WS	WS	WS	WS	WS
4	N. M. M. & T.	FWS	FWS	FWS	FWS	FWS	FWS	FWS
5	S.H. WEST BENGAL & SIKKIM	WS	WS	WS	WS	WS	WS	WS
6	GANGETIC WEST BENGAL	SCT	SCT	SCT	FWS	WS	WS	FWS
7	ODISHA	SCT	SCT	FWS	FWS	FWS	FWS	FWS
8	JHARKHAND	SCT	SCT	FWS	FWS	FWS	FWS	FWS
9	BIHAR	SCT	SCT	FWS	FWS	SCT	ISOL	ISOL
10	EAST UTTAR PRADESH	ISOL	ISOL	ISOL	SCT	SCT	FWS	FWS
11	WEST UTTAR PRADESH	DRY	DRY	DRY	ISOL	ISOL	SCT	SCT
12	UTTARAKHAND	SCT	SCT	SCT	SCT	FWS	FWS	WS
13	HARYANA, CHD & DELHI	ISOL	ISOL	ISOL	ISOL	ISOL	SCT	SCT
14	PUNJAB	ISOL	ISOL	ISOL	ISOL	ISOL	SCT	SCT
15	HIMACHAL PRADESH	SCT	SCT	SCT	SCT	SCT	FWS	FWS
16	JAMMU AND KASHMIR AND LADAKH	SCT	SCT	SCT	SCT	SCT	WS	WS
17	WEST RAJASTHAN	ISOL	ISOL	ISOL	ISOL	ISOL	ISOL	ISOL
18	EAST RAJASTHAN	ISOL	ISOL	ISOL	ISOL	ISOL	ISOL	ISOL
19	WEST MADHYA PRADESH	SCT	SCT	ISOL	ISOL	ISOL	ISOL	ISOL
20	EAST MADHYA PRADESH	SCT	ISOL	SCT	ISOL	ISOL	ISOL	SCT
21	GUJRAT REGION	ISOL	ISOL	ISOL	ISOL	ISOL	ISOL	ISOL
22	SAURASHTRA & KUTCH	ISOL	ISOL	ISOL	ISOL	ISOL	ISOL	ISOL
23	KONKAN & GOA	FWS	FWS	FWS	FWS	FWS	FWS	WS
24	MADHYA MAHARASHTRA	SCT	FWS	SCT	ISOL	ISOL	ISOL	SCT
25	MARATHWADA	WS	SCT	SCT	ISOL	ISOL	ISOL	ISOL
26	VIDARBHA	SCT	SCT	FWS	FWS	SCT	SCT	FWS
27	CHATTISGARH	SCT	FWS	FWS	FWS	FWS	FWS	FWS
28	COASTAL ANDHRA PRADESH	FWS	FWS	FWS	SCT	SCT	SCT	SCT
29	TELANGANA	FWS	FWS	FWS	FWS	FWS	SCT	SCT
30	RAYALASEEMA	SCT	FWS	SCT	SCT	SCT	ISOL	ISOL
31	TAMILNADU & PUDUCHERRY	SCT	SCT	SCT	ISOL	ISOL	ISOL	ISOL
32	COSTAL KARNATAKA	WS	WS	WS	WS	WS	WS	WS
33	NORTH INTERIOR KARNATAKA	FWS	FWS	FWS	FWS	SCT	SCT	FWS
34	SOUTH INTERIOR KARNATAKA	SCT	SCT	FWS	FWS	FWS	FWS	FWS
35	KERALA	WS	WS	WS	WS	WS	WS	WS
36	LAKSHDWEEP	WS	WS	WS	WS	WS	WS	WS

Legend	Category	%Stations
WS	Widespread/Most Places	76-100
FWS	Fairly Widespread/Many Places	51-75
SCT	Scattered/ A Few Places	26-50
ISOL	Isolated Places	1-25
DRY	No Rain	0

*Red color warning does not mean "Red Alert" Red color warning means "Take Action"
Forecast and warning for any day is valid from 0830 hours IST of day till 0830 hours IST of next day
For more details kindly visit <https://mausam.imd.gov.in> or contact 011-2434-4599

(Service to the nation since 1875)

Fig. 1: Maximum Temperatures Dated 2026-06-25

Fig. 2: Departure of Maximum Temp. Dated 2026-06-25

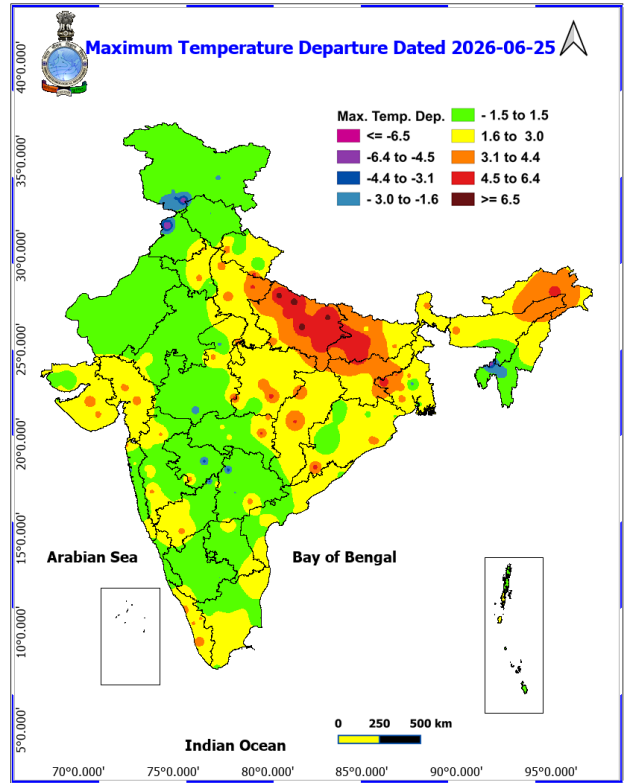
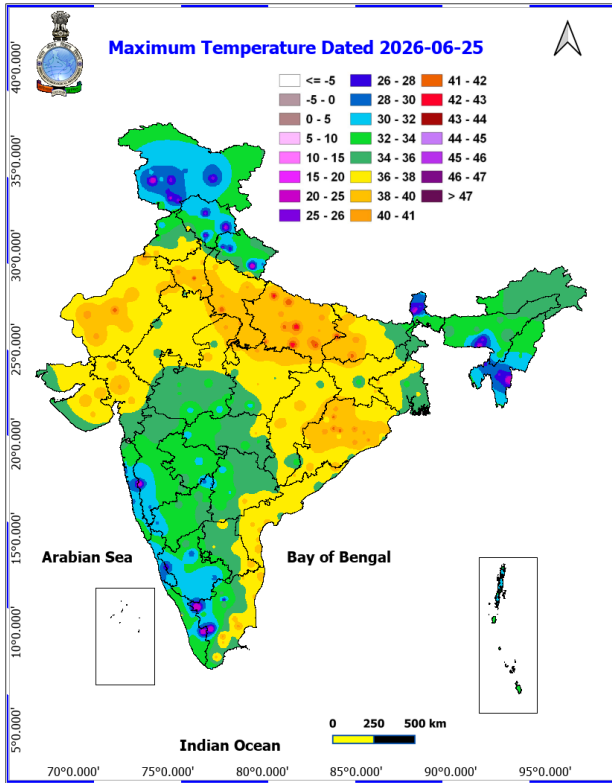
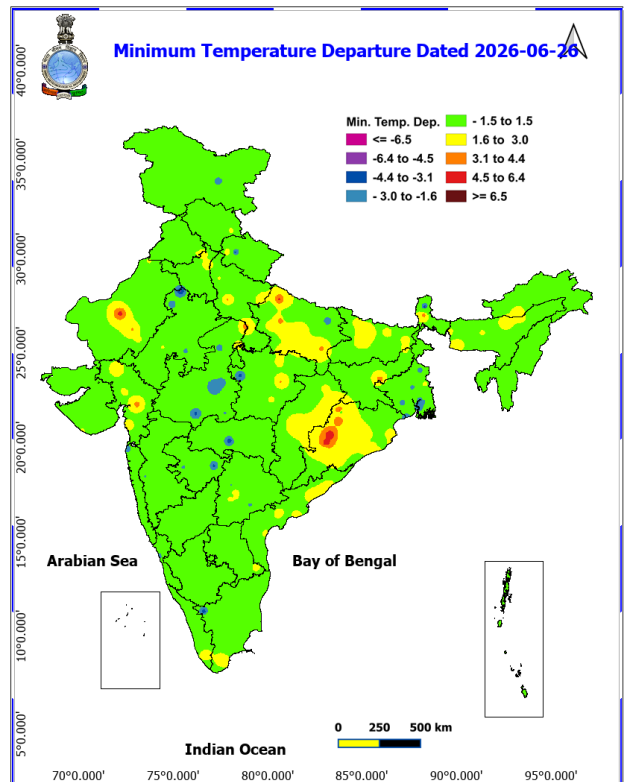
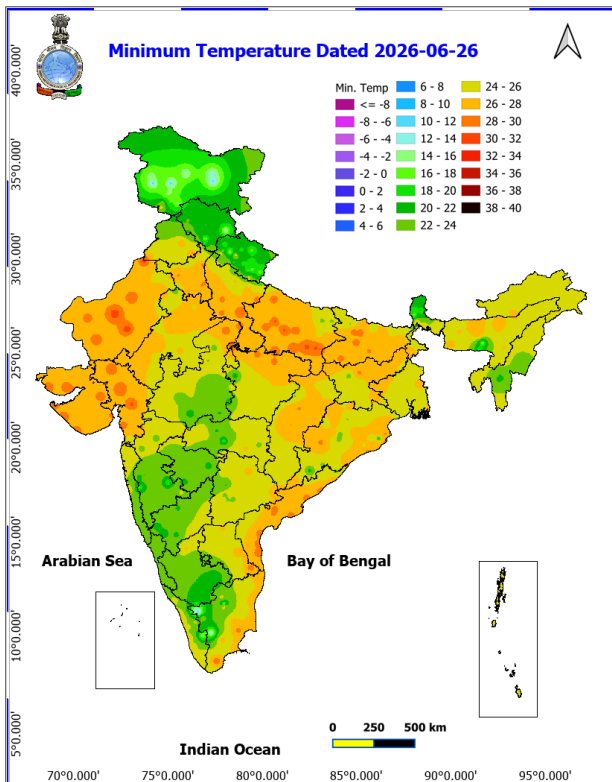
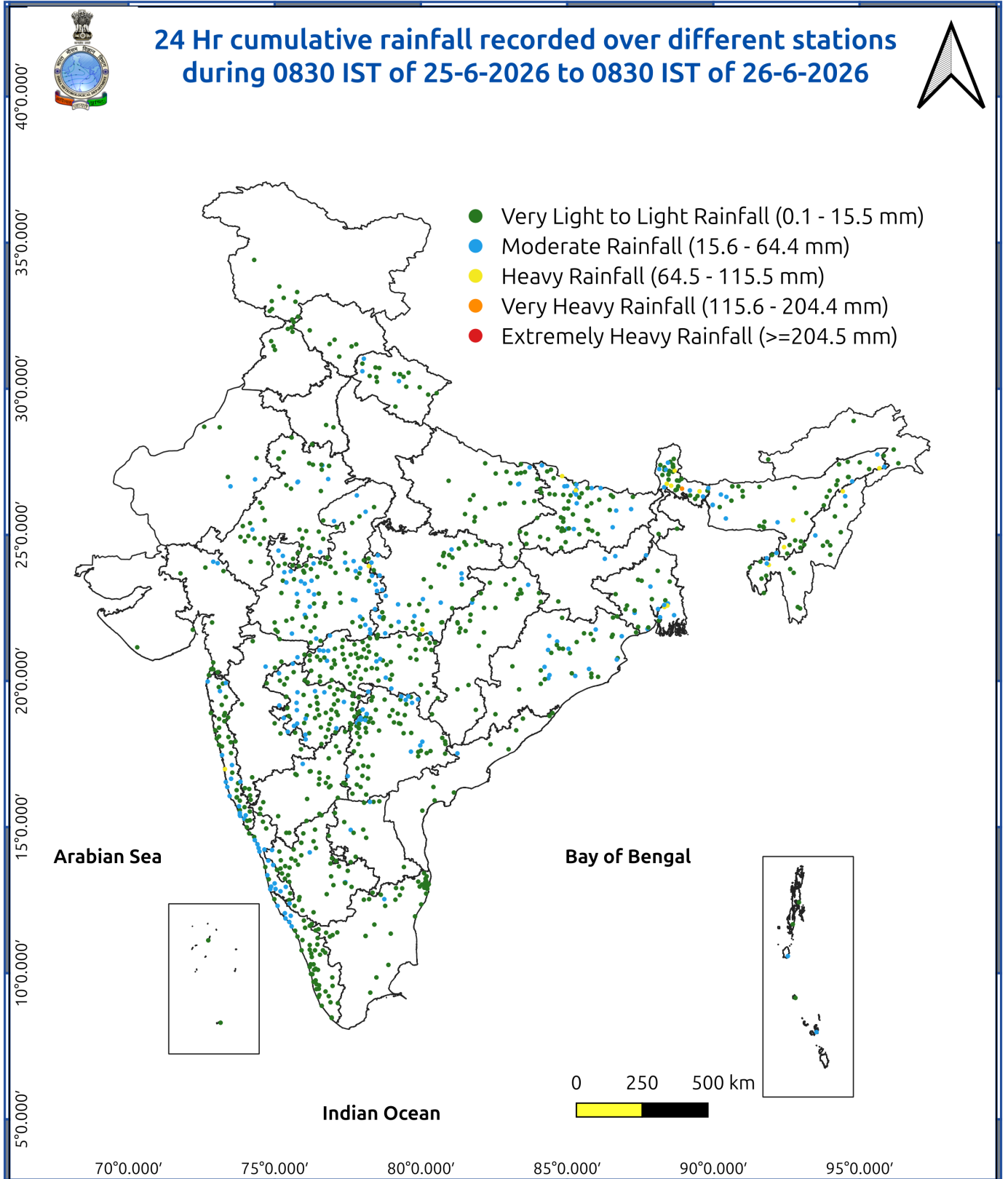


Fig. 3: Minimum Temperatures Dated 2026-06-26

Fig. 4: Departure of Minimum Temp. Dated 2026-06-26





Impact and Actions

Impact Expected & Action Suggested due to heavy/very heavy rainfall over

- Isolated **heavy to very heavy rainfall with extremely heavy rainfall** over Sub-Himalayan West Bengal & Sikkim during 27th -29th June.
- Isolated **very heavy rainfall** also likely over Arunachal Pradesh during 28th-29th June; Assam & Meghalaya during 27th June-1st July; Kerala & Mahe during 29th-30th June.

Impact Expected

- Localized Flooding of roads, water logging in low lying areas and closure of underpasses mainly in urban areas.
- Occasional reduction in visibility due to heavy rainfall.
- Disruption of traffic in major cities due to water logging in roads leading to increased travel time.
- Minor damage to kutcha roads.
- Possibilities of damage to vulnerable structure.
- Localized Landslides/Mudslides/landslips/mudslips/landsinks/mudsinks.
- Damage to horticulture and standing crops in some areas due to inundation.
- It may lead to riverine flooding in some river catchments (for riverine flooding please visit Web page of CWC)

Action Suggested

- Check for traffic congestion on your route before leaving for your destination.
- Follow any traffic advisories that are issued in this regard.
- Avoid going to areas that face the water logging problems often.
- Avoid staying in vulnerable structure.

Impact expected and action suggested due to isolated thunderstorm with lightning, gusty/squally winds & hailstorm over

- **Thundersquall (wind speed reaching 50-60 kmph gusting to 70 kmph)** likely over Jharkhand during 26th-27th June; Bihar on 26th June.

Impact expected:

- Breaking of tree branches, uprooting of large avenue trees. Large dead limbs blown from trees. Damage to Standing crops.
- Minor to Major damage to banana and papaya trees.
- Minor to major damage to power and communication lines due to breaking of branches.
- Strong wind/hail may damage plantation, horticulture and standing crops.
- Partial damage to vulnerable structures due to strong winds.
- Minor damage to kutcha houses/walls and huts.
- Loose objects may fly.

Action suggested:

- People are advised to keep a watch on the weather for worsening conditions and be ready to move to safer places accordingly.
- Stay indoors, close windows & doors and avoid travel if possible.
- Take safe shelters; do not take shelter under trees.
- Do not lie on concrete floors and do not lean against concrete walls.
- Unplug electrical/ electronic appliances.
- Immediately get out of water bodies.
- Keep away from all the objects that conduct electricity.

***Red color warning does not mean "Red Alert" Red color warning means "Take Action"**

Forecast and warning for any day is valid from 0830 hours IST of day till 0830 hours IST of next day

For more details kindly visit <https://mausam.imd.gov.in> or contact 011-2434-4599

(Service to the nation since 1875)

Impact expected and action suggested due to Heat wave conditions:

- **Heat wave** conditions very likely in isolated pockets over Uttar Pradesh during 26th-28th June with **severe heat wave** conditions in isolated pockets during 26th-27th June.

Alert Areas

- High temperature & increased likelihood of heat illness symptoms in people who are either exposed to sun for a prolonged period or doing heavy work.
- High health concern for vulnerable people e.g. infants, elderly, people with chronic diseases.
- Avoid heat exposure— keep cool. Avoid dehydration.
- Drink sufficient water- even if not thirsty.
- Use ORS, homemade drinks like lassi, torani (rice water), lemon water, buttermilk, etc. to keep yourself hydrated.

Agromet advisories for various parts of the country

Agromet advisories for likely impact of Heavy Rainfall

- In **Arunachal Pradesh**, ensure proper drainage in vegetables, maize, rice nursery and other crop fields to prevent waterlogging. Harvest mature vegetables and fruits to avoid crop losses.
- In **Assam**, ensure proper drainage arrangements for quick removal of excess water from rice nurseries, jute, ginger, turmeric, vegetables, banana, citrus and papaya. Avoid nursery sowing of *Sali* rice and sowing of jute, maize and vegetables during heavy rainfall. Cover the already seeded area with natural mulching materials like straw, farm residues etc. Provide mechanical support to the sugarcane crop to prevent lodging.
- In **Meghalaya**, ensure proper drainage channels in rice nurseries, maize, ginger, cowpea, vegetable fields and banana plantations. Protect young seedlings from direct exposure to heavy rainfall. Use propping (bamboo or wooden poles) to support heavily laden plants.
- In **Manipur**, undertake harvesting of pre-*kharif* rice and store the produce in safe place. Avoid transplanting of rice during heavy rainfall. Ensure proper drainage in soybean, chilli, ginger, turmeric, banana and other crop fields and newly transplanted seedlings and nursery crops to avoid water stagnation.
- In **Tripura**, ensure adequate drainage arrangements to remove excess water from rice and vegetable fields during heavy rainfall.
- In **Sub Himalayan West Bengal and Sikkim**, avoid nursery sowing of rice during heavy rainfall; protect already sown rice nursery beds with straw mulch, dry grass, or temporary polythene / agro-net covers to prevent seed washing, poor germination and seedling loss. Drain out excess water from jute, ginger, chilli, tomato and dalley khorsani fields and nurseries of *kharif* rice, finger millet and vegetables.
- In **Chhattisgarh**, ensure proper drainage to drain out excess rain water from standing crop fields to avoid waterlogging.
- In **Konkan and Goa** and *ghat* areas of **Madhya Maharashtra**, make arrangement to drain out excess water from nurseries of rice, finger millet and vegetables. Keep the harvested produce at safer places
- In **Keralam**, drain out excess water from banana, coconut, cardamom, ginger, black pepper and vegetables. Provide staking support in banana plants and strengthen the pandals of vegetable crops. Avoid transplanting of rice during heavy rain.
- In **Tamil Nadu**, undertake harvesting of matured pearl millet and picking of cotton during clear weather. Keep the harvested produce at safer places.
- In **Coastal Karnataka**, ensure proper drainage in rice seedbeds and fruit orchards to prevent water stagnation.
- In **Coastal Andhra Pradesh**, maintain drainage in paddy, maize, and horticultural crops (mango, banana) and avoid water stagnation in fields.
- In **Telangana**, make necessary arrangements to remove excess rain water from already sown crops.

*Red color warning does not mean "Red Alert" Red color warning means "Take Action"

Forecast and warning for any day is valid from 0830 hours IST of day till 0830 hours IST of next day

For more details kindly visit <https://mausam.imd.gov.in> or contact 011-2434-4599

(Service to the nation since 1875)

Agromet advisories for likely impact of High temperatures / Heat Waves

- In **Uttar Pradesh, Bihar** and **Odisha**, apply light irrigation as per requirement in vegetable crops and fruit orchards. Carry out mulching with crop residue, straw or polythene to conserve soil moisture. Use temporary shade nets to protect the fruit plants from high temperatures.

Agromet advisories for likely impact of Thunderstorm / Gusty Winds

- Shift the harvested produce in safer places or cover the produce with tarpaulin sheets in the fields. Tie the harvested crops securely and cover them to minimize the risk of displacement from strong surface winds.
- Provide mechanical support to horticultural crops and staking or support to vegetables and young fruit plants / fruit-bearing plants to avoid lodging due to strong winds.

Livestock / Poultry / Fisheries

Keep the animals inside the shed during heavy rainfall and provide them balanced feed.

Store the feed and fodder in a safe place to prevent spoilage.

In regions with high temperatures and heat wave conditions, provide clean, cool drinking water to animals, and cover the roofs of poultry sheds with grass to reduce the adverse effects of heat.

Construct an outlet with proper netting around the ponds to drain excess water, thereby preventing fish from escaping in the event of overflow.

Livestock / Poultry / Fisheries

- Keep the animals inside the shed during heavy rainfall and provide them balanced feed.
- Store the feed and fodder in a safe place to prevent spoilage.
- In regions with high temperatures and heat wave conditions, provide clean, cool drinking water to animals, and cover the roofs of poultry sheds with grass to reduce the adverse effects of heat.
- Construct an outlet with proper netting around the ponds to drain excess water, thereby preventing fish from escaping in the event of overflow.

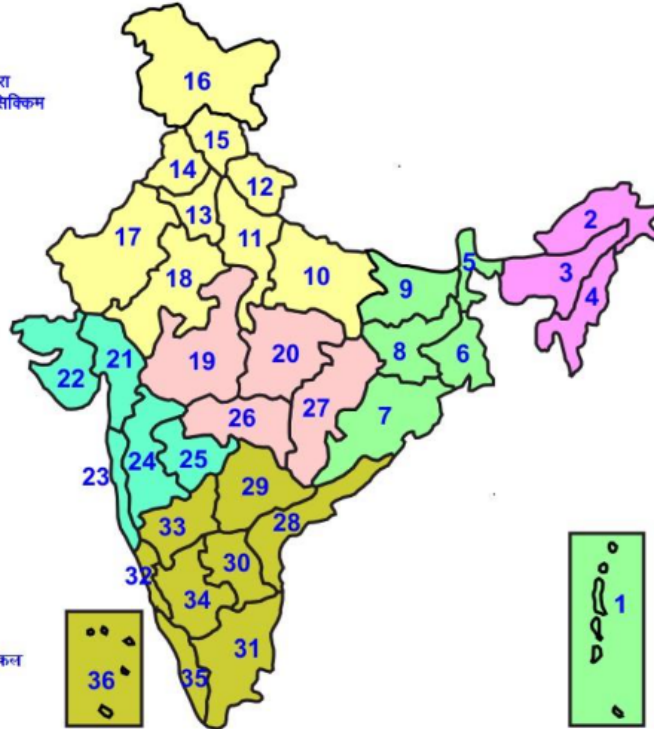
Legends & abbreviations:

Region wise classification of meteorological Sub-Divisions:

- **Northwest India:** Western Himalayan Region (Jammu-Kashmir-Ladakh-Gilgit-Baltistan-Muzaffarabad, Himachal Pradesh and Uttarakhand); Punjab, Haryana Chandigarh & Delhi; West Uttar Pradesh, East Uttar Pradesh, West Rajasthan and East Rajasthan.
- **Central India:** West Madhya Pradesh, East Madhya Pradesh, Vidarbha and Chhattisgarh.
- **East India:** Bihar, Jharkhand, Sub-Himalayan West Bengal & Sikkim; Gangetic West Bengal, Odisha and Andaman & Nicobar Islands.
- **Northeast India:** Arunachal Pradesh, Assam & Meghalaya and Nagaland, Manipur, Mizoram & Tripura.
- **West India:** Gujarat Region, Saurashtra & Kutch, Coastal Maharashtra (Konkan) & Goa, Madhya Maharashtra and Marathawada.
- **South India:** Coastal Andhra Pradesh & Yanam, Telangana, Rayalaseema, Coastal Karnataka, North Interior Karnataka, South Interior Karnataka, Kerala & Mahe, Tamil Nadu, Puducherry & Karaikal and Lakshadweep.

LEGENDS

- 1 अंडमान और निकोबार द्वीप समुह
- 2 अरुणाचल प्रदेश
- 3 असम और मेघालय
- 4 नागालैंड मनीपुर मीजोरम और त्रिपुरा
- 5 उप हिमालय पश्चिम बंगाल एवं सिक्किम
- 6 पश्चिम बंगाल
- 7 ओडिसा
- 8 झारखंड
- 9 बिहार
- 10 पूर्वी उत्तर प्रदेश
- 11 पश्चिम उत्तर प्रदेश
- 12 उत्तराखंड
- 13 हरियाणा चंडिगढ़ एवं दिल्ली
- 14 पंजाब
- 15 हिमाचल प्रदेश
- 16 जम्मू एवं कश्मीर एवं लद्दाख
- 17 पश्चिम राजस्थान
- 18 पूर्वी राजस्थान
- 19 पश्चिम मध्य प्रदेश
- 20 पूर्वी मध्य प्रदेश
- 21 गुजरात क्षेत्र
- 22 सौराष्ट्र एवं कच्छ
- 23 कोंकण एवं गोवा
- 24 मध्य महाराष्ट्र
- 25 मराठावाडा
- 26 विदर्भ
- 27 छत्तीसगढ़
- 28 तटीय आंध्र प्रदेश एवं यनम
- 29 तेलंगाना
- 30 रायलसीमा
- 31 तमिलनाडु, पुदुचेरी एवं कराईकल
- 32 तटिय कर्नाटक
- 33 आंतरिक उत्तरी कर्नाटक
- 34 आंतरिक दक्षिणी कर्नाटक
- 35 केरल एवं माहे
- 36 लक्षद्वीप



1. Andaman & Nicobar Islands
2. Arunachal Pradesh
3. Assam & Meghalaya
4. Nagaland, Manipur, Mizoram & Tripura
5. Sub-Himalayan West Bengal & Sikkim
6. Gangetic West Bengal
7. Orissa
8. Jharkhand
9. Bihar
10. East Uttar Pradesh
11. West Uttar Pradesh
12. Uttarakhand
13. Haryana, Chd & Delhi
14. Punjab
15. Himachal Pradesh
16. Jammu & Kashmir and Ladakh
17. West Rajasthan
18. East Rajasthan
19. West Madhya Pradesh
20. East Madhya Pradesh
21. Gujarat
22. Saurashtra
23. Konkan & Goa
24. Madhya Maharashtra
25. Marathawada
26. Vidharbha
27. Chhattisgarh
28. Coastal Andhra Pradesh & Yanam
29. Telangana
30. Rayalaseema
31. Tamilnadu, Puducherry & Karaikal
32. Coastal Karnataka
33. North Interior Karnataka
34. South Interior Karnataka
35. Kerala & Mahe
36. Lakshadweep

SPATIAL DISTRIBUTION (% of Stations reporting)

% Stations	Category	% Stations	Category
76-100	Widespread (WS/ Most Places)	26-50	Scattered (SCT/ A Few Places)
51-75	Fairly Widespread (FWS/ Many Places)	1-25	Isolated (ISOL)

Subdivision Colour

- NO WARNING
- WATCH (BE UPDATED)
- ALERT (BE PREPARED TO TAKE ACTION)
- WARNING (TAKE ACTION)

Probabilistic Forecast

Terms	Probability of Occurrence (%)
Unlikely	< 25
Likely	25 - 50
Very Likely	50 - 75
Most Likely	> 75

- | | | | |
|--------------------------|-----------------|----------------------|--------------------|
| Heavy Rain | Very Heavy Rain | Extremely Heavy Rain | Heavy Snow |
| Thunderstorm & Lightning | Hailstorm | Dust Storm | Dust Raising Winds |
| Strong surface winds | Heat Wave | Hot Day | Warm Night |
| Cold Wave | Cold Day | Ground Frost | Fog |
| Hot & Humid | | | |

*Red color warning does not mean "Red Alert" Red color warning means "Take Action"

Forecast and warning for any day is valid from 0830 hours IST of day till 0830 hours IST of next day

For more details kindly visit <https://mausam.imd.gov.in> or contact 011-2434-4599

(Service to the nation since 1875)

LEGENDS

WARNING

WARNING (TAKE ACTION)
ALERT (BE PREPARED)
WATCH (BE UPDATED)
NO WARNING (NO ACTION)

Probabilistic Forecast

Terms	Probability of Occurrence (%)
Unlikely	< 25
Likely	25 - 50
Very Likely	50 - 75
Most Likely	> 75



Heavy: 64.5 to 115.5 mm/cm *
Very Heavy: 115.6 to 204.4 mm/cm*
Extremely Heavy: > 204.4 mm/cm *



When maximum temperature of a station reaches $\geq 40^{\circ}\text{C}$ for plains and $\geq 30^{\circ}\text{C}$ for hilly regions
(a) Based on Departure from normal

Heat Wave: Maximum Temperature Departure from normal 4.5°C to 6.4°C .
Severe Heat Wave: Maximum Temperature Departure from normal $\geq 6.5^{\circ}\text{C}$

(b). Based on Actual maximum temperature

Heat Wave: When actual maximum temperature $\geq 45^{\circ}\text{C}$.
Severe Heat Wave: When actual maximum temperature $\geq 47^{\circ}\text{C}$

(c). Criteria for heat wave for coastal stations

When maximum temperature departure is $> 4.5^{\circ}\text{C}$ from normal. Heat Wave may be described provided maximum temperature $\geq 37^{\circ}\text{C}$



When maximum temperature remains 40°C

Warm Night: When minimum temperature departure 4.5°C to 6.4°C .
Severe Warm Night: When minimum temperature departure $> 6.4^{\circ}\text{C}$.



When minimum temperature of a station $\leq 10^{\circ}\text{C}$ for plains and $\leq 0^{\circ}\text{C}$ for hilly regions.

(a). Based on departure

Cold Wave: Minimum Temperature Departure from normal -4.5°C to -6.4°C .
Severe Cold Wave: Minimum Temperature Departure from normal $\leq -6.5^{\circ}\text{C}$

(b) Based on actual Minimum Temperature (for Plains only)

Cold Wave : When Minimum Temperature is $\leq 4.0^{\circ}\text{C}$
Severe Cold Wave: When Minimum Temperature is $\leq 2.0^{\circ}\text{C}$

(c) For Coastal Stations

When Minimum Temperature departure is $\leq -4.5^{\circ}\text{C}$ & actual Minimum Temperature is $\leq 15^{\circ}\text{C}$



When minimum temperature of a station $\leq 10^{\circ}\text{C}$ for plains and $\leq 0^{\circ}\text{C}$ for hilly regions
Based on departure

Cold Day: Maximum Temperature Departure from normal -4.5°C to -6.4°C .
Severe Cold Day: Maximum Temperature Departure from normal $\leq -6.5^{\circ}\text{C}$



Phenomenon of small droplets suspended in air and the horizontal visibility $< 1\text{km}$

Moderate Fog: When the visibility between 500-200 metres
Dense Fog: when the visibility between 50- 200 metres
Very Dense Fog: when the visibility < 50 metres



Sudden electrical discharges manifested by a flash of light (Lightning) and a sharp rumbling sound (thunder)



An ensemble of particles of dust or sand energetically lifted to great heights by a strong and turbulent wind.



Ice deposits on ground

Air temperature $\leq 4^{\circ}\text{C}$ (over Plains)



A strong wind that rises suddenly, lasts for atleast 1 minute.

Moderate: Wind speed 52-61 kmph
Severe: Wind speed 62-87 kmph
Very Severe: Wind speed > 87 kmph



Effect of various waves in the sea over specific area

Rough to very rough: Wind speed 41-62 kmph (22-33 knots) & Wave height 2.5-6 metre
High to very high: Wind speed 63-117 kmph (34-63 knots) & Wave height 6-14 metre
Phenomenal: Wind speed > 117 kmph (> 63 knots) & Wave height > 14 metre



Cyclonic Storm: Wind speed 62-87 kmph (34-47 knots)
Severe Cyclonic Storm: Wind speed 88-117 kmph (48-63 knots)
Very Severe Cyclonic Storm: Wind speed 118-165 kmph (64 - 89 knots)
Extremely Severe Cyclonic Storm: Wind speed 166-220 kmph (90 -119 knots)
Super Cyclone Storm: Wind speed > 220 kmph (> 119 knots)

*Red color warning does not mean "Red Alert" Red color warning means "Take Action"

Forecast and warning for any day is valid from 0830 hours IST of day till 0830 hours IST of next day

For more details kindly visit <https://mausam.imd.gov.in> or contact 011-2434-4599

(Service to the nation since 1875)