

2025-08-04

Time of Issue: 13:43:00 hours IST
(Mid-Day)

ALL INDIA WEATHER SUMMARY AND FORECAST BULLETIN

Significant Weather Features

Northwest India:

- **Extremely heavy rainfall very likely at isolated places over Uttar Pradesh and Uttarakhand on 04th August.**
- Isolated **heavy rainfall** likely over Uttarakhand during 04th-10th; Himachal Pradesh during 04th-08th; Jammu-Kashmir, Punjab on 04th & 05th; Haryana, West Uttar Pradesh during 04th-06th; East Uttar Pradesh on 04th & 05th August with **very heavy rainfall** over Himachal Pradesh on 04th & 05th; Uttarakhand, Haryana, Uttar Pradesh on 05th August.
- Light/moderate rainfall at many places accompanied with thunderstorm & lightning likely over Western Himalayan region and many/some places over the plains during next 7 days.

East & Central India:

- Isolated **heavy rainfall** likely over Sub-Himalayan West Bengal & Sikkim, Bihar during 04th-9th; Odisha on 06th & 07th; Gangetic West Bengal on 04th, 06th & 07th, Jharkhand on 07th & 08th; northwest Madhya Pradesh on 04th & 05th, East Madhya Pradesh on 04th and Chhattisgarh during 08th-10th August with **isolated very heavy rainfall over Bihar on 04th & 05th; Sub-Himalayan West Bengal & Sikkim on 04th & 07th August.**
- Light to moderate rainfall at most/many places accompanied with thunderstorm & lightning likely over the region during next 5 days.

Northeast India:

- Light/moderate rainfall at many places accompanied with thunderstorm, lightning and isolated **heavy rainfall** likely to continue over Arunachal Pradesh, Assam & Meghalaya during 04th-10th; Nagaland, Manipur, Mizoram & Tripura during 04th-08th August with isolated **very heavy rainfall over Arunachal Pradesh on 04th & during 07th-10th August; Assam & Meghalaya on 04th, 07th & 08th August.**

South Peninsular India:

- **Extremely heavy rainfall very likely at isolated places over Kerala and Ghat areas of Tamil Nadu on 05th & 06th August.**
- Isolated **heavy rainfall** likely over Tamil Nadu, Kerala & Mahe, Coastal & South Interior Karnataka during 04th-08th; Lakshadweep during 04th-06th; North Interior Karnataka during 06th-08th; Coastal Andhra Pradesh & Yanam during 04th-07th; Rayalaseema during 04th-10th August with **very heavy rainfall** over Tamil Nadu, Kerala on 04th & 07th; Coastal & South Interior Karnataka during 04th-06th; Rayalaseema on 05th August.
- Strong surface winds (speed reaching 40-50 kmph) very likely over South Peninsular India during next 3 days.
- Light to moderate rainfall at some/many places accompanied with thunderstorm & lightning likely over Tamil Nadu, Kerala & Mahe, Lakshadweep, Karnataka, Rayalaseema, Coastal Andhra Pradesh & Yanam and Telangana during next 5 days.

West India:

- Isolated **heavy rainfall** likely over Marathwada on 06th & 07th; Konkan & Goa on 07th & 08th and Madhya Maharashtra on 08th August.
- Light to moderate rainfall at many/some places very likely over the region during next 5-6 days.

***Red color warning does not mean "Red Alert" Red color warning means "Take Action"**

Forecast and warning for any day is valid from 0830 hours IST of day till 0830 hours IST of next day

For more details kindly visit <https://mausam.imd.gov.in> or contact 011-2434-4599

(Service to the nation since 1875)

Main Weather Observations:

❖ **Rainfall distribution** (from 0830 hours IST of yesterday to 0830 hours IST of today): **at most places** over Andaman & Nicobar Islands, Assam & Meghalaya, Nagaland, Manipur, Mizoram & Tripura, Sub Himalayan West Bengal & Sikkim, Gangetic West Bengal, Bihar, Jharkhand, East Uttar Pradesh, West Uttar Pradesh, Uttarakhand, Himachal Pradesh, Konkan & Goa, Kerala & Mahe and Lakshadweep; **at many places** over Arunachal Pradesh, Coastal Karnataka and South Interior Karnataka; **at a few places** over Odisha, Haryana-Chandigarh-Delhi, Punjab, East Madhya Pradesh, Gujarat Region, Saurashtra & Kutch, Chhattisgarh, Coastal Andhra Pradesh & Yanam, Telangana, Rayalaseema and Tamil Nadu, Puducherry & Karaikal; **at isolated places** over Jammu-Kashmir-Ladakh-Gilgit-Baltistan-Muzaffarabad, East Rajasthan, West Madhya Pradesh, Madhya Maharashtra, Marathwada, Vidarbha and North Interior Karnataka; **Dry** over rest of the country.

❖ **Significant rainfall recorded(in cm)** (from 0830 hours IST of yesterday to 0830 hours IST of today): **Bihar:** Purnea (dist Purnea) 27, Hayaghat (dist Darbhanga) 16, Runnisaidpur (dist Sitamarhi) 14, Sheohar (dist Sheohar) 13, Bettiah (dist West Champaran) 13, Purnahia (dist Sheohar) 12, Dhengbridge (dist Sitamarhi) 12, Sikta (dist West Champaran) 12, Piprahi (dist Sheohar) 12, Dhaka (dist East Champaran) 11, Warisnagar (dist Samastipur) 11, Chatia (dist East Champaran) 11, Bhagwanpur (dist Vaishali) 11, Kursela (dist Katihar) 11, Bhagwanpur Hat (dist Siwan) 11, Rosera (dist Samastipur) 10, Basantpur (dist Siwan) 10, Mahua (dist Vaishali) 9, Goriakothi (dist Siwan) 9, Baigania (dist Sitamarhi) 9, Katihar (dist Katihar) 9, Chehara Kala (dist Vaishali) 9, Krityanand Nagar (dist Purnea) 9, Danapur (dist Patna) 9, Areraj (dist East Champaran) 9, Harsidhi (dist East Champaran) 9, Kalyanpur (dist Samastipur) 9, Banmankhi (dist Purnea) 9, Khanpur (dist Samastipur) 9, Kurhani (dist Muzaffarpur) 9, Korha (dist Katihar) 8, Samastipur (dist Samastipur) 8, Kusheswarstan (dist Darbhanga) 8, Patepur (dist Vaishali) 8, Goraul/doli (dist Vaishali) 8, Bandra (dist Muzaffarpur) 8; **Assam & Meghalaya:** Cherrapunji (dist East Khasi Hills) 20; Cherrapunji(rkm) (dist East Khasi Hills) 17; Bhaghmara (dist South Garo Hills) 15; Shella (dist East Khasi Hills) 13; Karimganj (dist Sribhumii), Mawsynram (dist East Khasi Hills), Williamnagar (dist East Garo Hills) 11 Each; Kajolgaon AWS (dist Chirang) 9; Mawphlang (dist East Khasi Hills) 8; **East Uttar Pradesh:** Rae Bareilly CWC (dist Rae Bareilly) 20; Ayodhya (dist Ayodhya) 15; Ram Sanehi Ghat Tehsil (dist Barabanki) 14; Mahsi (dist Bahraich), Uska Bazar Fmo (dist Siddharth Nagar) 11 Each; Fursatganj (dist Amethi), Tanda (dist Ambedkar Nagar), Muhammadi (dist Kheri), Kakardharighat (dist Shrawasti), Neemsar (dist Sitapur), Manikpur (dist Chitrakoot) 10 Each; Mukhlispur (dist Sant Kabir Nagar), Colonganj (dist Gonda), Haidargarh (dist Barabanki), Trimohani Ghat Fmo (dist Maharajganj), Mohammedabad (Y) (dist Ghazipur), Sandila (dist Hardoi), Hata (dist Kushi Nagar), Lucknow (Ap) (dist Lucknow), Malihabad (dist Lucknow), Patti (dist Pratapgarh), Bhatpurwaghat (dist Sitapur) 9 Each; Bhanpur (dist Basti), Lalganj Aara (dist Pratapgarh), Kaiserganj (dist Bahraich), Mankapur (dist Gonda), Chanderdeepghat (dist Gorakhpur), Kunda (dist Pratapgarh), Rajapur (dist Chitrakoot) 8 Each; **West Uttar Pradesh:** Budaun (dist Badaun) 19; Sahaswan (dist Badaun) 13; Gunnaur (dist Sambhal), Moradabad CWC (dist Moradabad), Sambhal (dist Sambhal) 12 Each; Saharanpur (dist Saharanpur) 11; Bijnor (dist Bijnor), Dhampur (dist Bijnor), Moradabad (dist Moradabad) 10 Each; Chandpur (dist Bijnor), Bareilly PBO (dist Bareilly), Bilari (dist Moradabad) 9 Each; Moradabad (dist Moradabad), Jansath (dist Muzaffarnagar), Dataganj (dist Badaun), Najibabad (t) (dist Bijnor), Amroha (dist Amroha) 8 Each; **Uttarakhand:** Kotdwara (dist Garhwal Pauri) 17; Sama (dist Bageshwar), Loharkhet (dist Bageshwar) 14 Each; Haldwani (dist Nainital) 13; Narendranagar (dist Garhwal Tehri) 11; Hardwar (dist Hardwar) 10; Chamoli (dist Chamoli), Rishikesh (dist Dehradun) 9 Each; Landsdown (dist Garhwal Pauri), Dehra Dun (dist Dehradun) 8 Each; **Kerala & Mahe:** Thodupuzha (dist Idukki) 13; Athirappalli AWS (dist Thrissur) 12; Kanjirappally (dist Kottayam) 10; Udumbannoor AWS (dist Idukki) 9; Mangalam Dam AWS (dist Palakkad) 8; **East Madhya Pradesh:** Teonthar (dist Rewa) 13; **Telangana:** Gudurwrgl (dist Mahabubabad) 11; Narsampet (dist Warangal), Yellandu (dist B. Kothagudem) 9 Each; Kusumanchi (dist Khammam) 8; **Chhattisgarh:** Balrampur (dist Balrampur), Kusmi (dist Balrampur) 11 Each; **Coastal Andhra Pradesh & Yanam:** Seethanagaram (dist Parvathipuram Manyam) 10; **Odisha:** Rajkanika (dist Kendrapara), Aul (dist Kendrapara) 10 Each; **Gangetic West Bengal:** Kalyani Smo (dist Nadia), Contai (dist East Midnapore) 10 Each; **Arunachal Pradesh:** Roing (dist Lower Dibang Valley) 9; **South Interior Karnataka:** Rayalpadu (dist Kolar) 9; **Himachal Pradesh:** Kasauli (dist Solan) 8; **Haryana-Chandigarh-Delhi:** Jagadhari (dist Yamuna Nagar), Morni (dist Panchkula) 8 Each; **Sub Himalayan West Bengal & Sikkim:** Mathabhanga (dist Cooch Behar), Mekhliganj (dist Cooch Behar) 8 Each.

❖ **Heavy Rainfall observed** (from 0830 hours IST of yesterday to 0830 hours IST of today): **Heavy to very heavy rainfall with extremely heavy falls** at isolated places over Bihar and Meghalaya. **Heavy to very heavy rain** at isolated places over Assam, East Uttar Pradesh, West Uttar Pradesh, Uttarakhand, East Madhya Pradesh and Kerala

*Red color warning does not mean "Red Alert" Red color warning means "Take Action"

Forecast and warning for any day is valid from 0830 hours IST of day till 0830 hours IST of next day

For more details kindly visit <https://mausam.imd.gov.in> or contact 011-2434-4599

(Service to the nation since 1875)

& Mahe. **Heavy rain** at isolated places over Arunachal Pradesh, Sub Himalayan West Bengal & Sikkim, Gangetic West Bengal, Odisha, Haryana-Chandigarh-Delhi, Himachal Pradesh, Chhattisgarh, Coastal Andhra Pradesh & Yanam, Telangana, Rayalaseema, Tamil Nadu, Puducherry & Karaikal and South Interior Karnataka.

❖ **Minimum Temperature Departures (as on 04-08-2025):** **markedly above normal(> 5.1°C)** at isolated places over Assam & Meghalaya, Odisha, East Uttar Pradesh, West Uttar Pradesh, Himachal Pradesh, West Rajasthan, East Rajasthan and West Madhya Pradesh. **appreciably above normal(3.1°C to 5.0°C)** at few places over East Madhya Pradesh; at isolated places over Sub Himalayan West Bengal & Sikkim, Bihar, Jammu-Kashmir-Ladakh-Gilgit-Baltistan-Muzaffarabad, Gujarat Region, Saurashtra & Kutch and Chhattisgarh. **above normal(1.6°C to 3.0°C)** at many places over Marathwada; at few places over Uttarakhand, Vidarbha, Coastal Andhra Pradesh & Yanam and Telangana; at isolated places over Gangetic West Bengal, Haryana-Chandigarh-Delhi, Punjab, Madhya Maharashtra, Rayalaseema, Tamil Nadu, Puducherry & Karaikal and North Interior Karnataka. **near normal(-1.5°C to 1.5°C)** at many places over Jharkhand and Kerala & Mahe; at most places over Andaman & Nicobar Islands, Arunachal Pradesh, Nagaland, Manipur, Mizoram & Tripura, Konkan & Goa, Coastal Karnataka, South Interior Karnataka and Lakshadweep. **The lowest minimum temperature** of 20.2°C is reported at Khargone (West Madhya Pradesh) over the Plains of India.

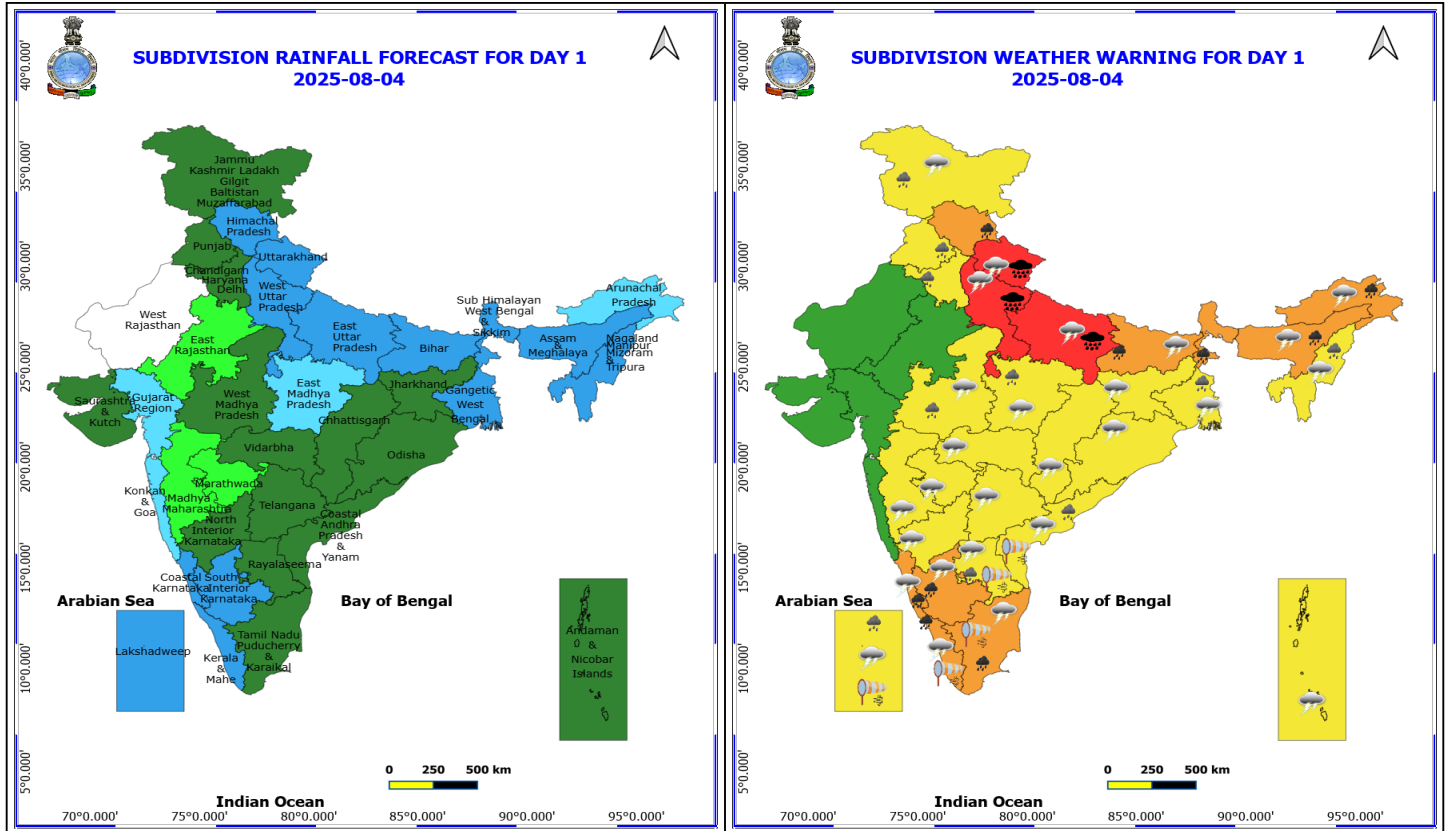
❖ **Maximum Temperature Departures (as on 03-08-2025):** **markedly above normal(> 5.1°C)** at many places over Jammu-Kashmir-Ladakh-Gilgit-Baltistan-Muzaffarabad; at isolated places over Odisha, Madhya Maharashtra and Chhattisgarh. **appreciably above normal(3.1°C to 5.0°C)** at many places over Vidarbha; at few places over Coastal Andhra Pradesh & Yanam and Telangana; at isolated places over Gangetic West Bengal and Marathwada. **above normal(1.6°C to 3.0°C)** at many places over Coastal Karnataka; at few places over Konkan & Goa and North Interior Karnataka; at isolated places over Assam & Meghalaya, Uttarakhand, Himachal Pradesh, West Madhya Pradesh, East Madhya Pradesh, Gujarat Region, Saurashtra & Kutch, Rayalaseema and Kerala & Mahe. **near normal(-1.5°C to 1.5°C)** at many places over Andaman & Nicobar Islands, East Rajasthan, South Interior Karnataka and Lakshadweep; at most places over Nagaland, Manipur, Mizoram & Tripura, Haryana-Chandigarh-Delhi, Punjab and West Rajasthan; at few places over Arunachal Pradesh, Sub Himalayan West Bengal & Sikkim, Jharkhand, Bihar and Tamil Nadu, Puducherry & Karaikal; at isolated places over West Uttar Pradesh. **The highest maximum temperature** of 39.0°C is reported at TANJAVUR (TAMIL NADU).

Meteorological Analysis (Based on 0830 hours IST)

- The **monsoon trough** at mean sea level now passes through Amritsar, Dehradun, Shahjahanpur, Valmiki Nagar, Chapra, Jalpaiguri and thence east-northeastwards to the Arunachal Pradesh.
- An **upper air cyclonic circulation** layover Himachal Pradesh & neighbourhood at 1.5 km above mean sea level.
- The **Western Disturbance** now seen as a cyclonic circulation over Himachal Pradesh and adjoining Jammu Division at 5.8 km above mean sea level.
- The **trough** from northwest Uttar Pradesh to northeast Bihar across east Uttar Pradesh at 0.9 km above mean sea level persisted.
- The **upper air cyclonic circulation** over southwest Bay off North Tamil Nadu coast between 3.1 & 7.6 km above mean sea level tilting southward with height persisted.
- The east-west **trough** now runs roughly along Lat. 12°N from southern parts of eastcentral Arabian Sea to Southern parts of central Bay of Bengal across South Interior Karnataka & Tamil Nadu and the cyclonic circulation over southwest Bay off North Tamil Nadu coast between 3.1 & 7.6 km above mean sea level tilting southward with height.
- The **upper air cyclonic circulation** over northeast Arabian sea & neighbourhood lay over Saurashtra at 4.5 km above mean sea level.
- The **upper air cyclonic circulation** over north Gujarat & adjoining south Rajasthan lay over central parts of south Rajasthan at 3.1 km above mean sea level.
- An **upper air cyclonic circulation** lies over northeast Assam at 3.1 km above mean sea level.
- An **upper air cyclonic circulation** likely to form over south Bangladesh & neighbourhood around 08th August, 2025.

Weather Outlook for subsequent 3 days

- Fairly widespread to widespread rainfall likely over the most parts of the country except Madhya Maharashtra and Marathwada where Isolated rainfall is likely.



4 August (Day 1)

- ❖ **Heavy to Very Heavy Rainfall at a few places with isolated Extremely Heavy Rainfall** very likely at isolated places over Uttar Pradesh and Uttarakhand.
- ❖ **Heavy to Very Heavy Rainfall** very likely at isolated places over Arunachal Pradesh, Assam & Meghalaya, Bihar, Coastal Karnataka, Himachal Pradesh, Kerala & Mahe, South Interior Karnataka, Sub Himalayan West Bengal & Sikkim and Tamil Nadu Puducherry & Karaikal.
- ❖ **Heavy Rainfall** very likely at isolated places over Andhra Pradesh, Gangetic West Bengal, Haryana, Chandigarh & Delhi, Jammu-Kashmir-Ladakh-Gilgit-Baltistan-Muzaffarabad, Lakshadweep, Madhya Pradesh, Nagaland, Manipur, Mizoram and Tripura and Punjab.
- ❖ **Thunderstorm accompanied with lightning & gusty winds(30-40kmph)** very likely at isolated places over Andaman & Nicobar Islands, Bihar, Gangetic West Bengal, Interior Karnataka, Jammu-Kashmir-Ladakh-Gilgit-Baltistan-Muzaffarabad, Jharkhand, Odisha and West Madhya Pradesh.
- ❖ **Thunderstorm accompanied with Lightning** very likely at isolated places over Andhra Pradesh, Arunachal Pradesh, Assam & Meghalaya, Chhattisgarh, Coastal Karnataka, East Madhya Pradesh, Kerala & Mahe, Lakshadweep, Maharashtra, Nagaland, Manipur, Mizoram and Tripura, Tamil Nadu Puducherry & Karaikal, Telangana, Uttar Pradesh and Uttarakhand.
- ❖ **Strong Surface Winds** very likely at isolated places over Andhra Pradesh, Kerala & Mahe, Lakshadweep and Tamil Nadu Puducherry & Karaikal.

Squally wind with speed reaching 45 kmph to 55 kmph gusting to 65 kmph is likely to prevail along and off Somalia, many parts of west central Arabian Sea, many parts of southwest Arabian Sea.

***Red color warning does not mean "Red Alert" Red color warning means "Take Action"**

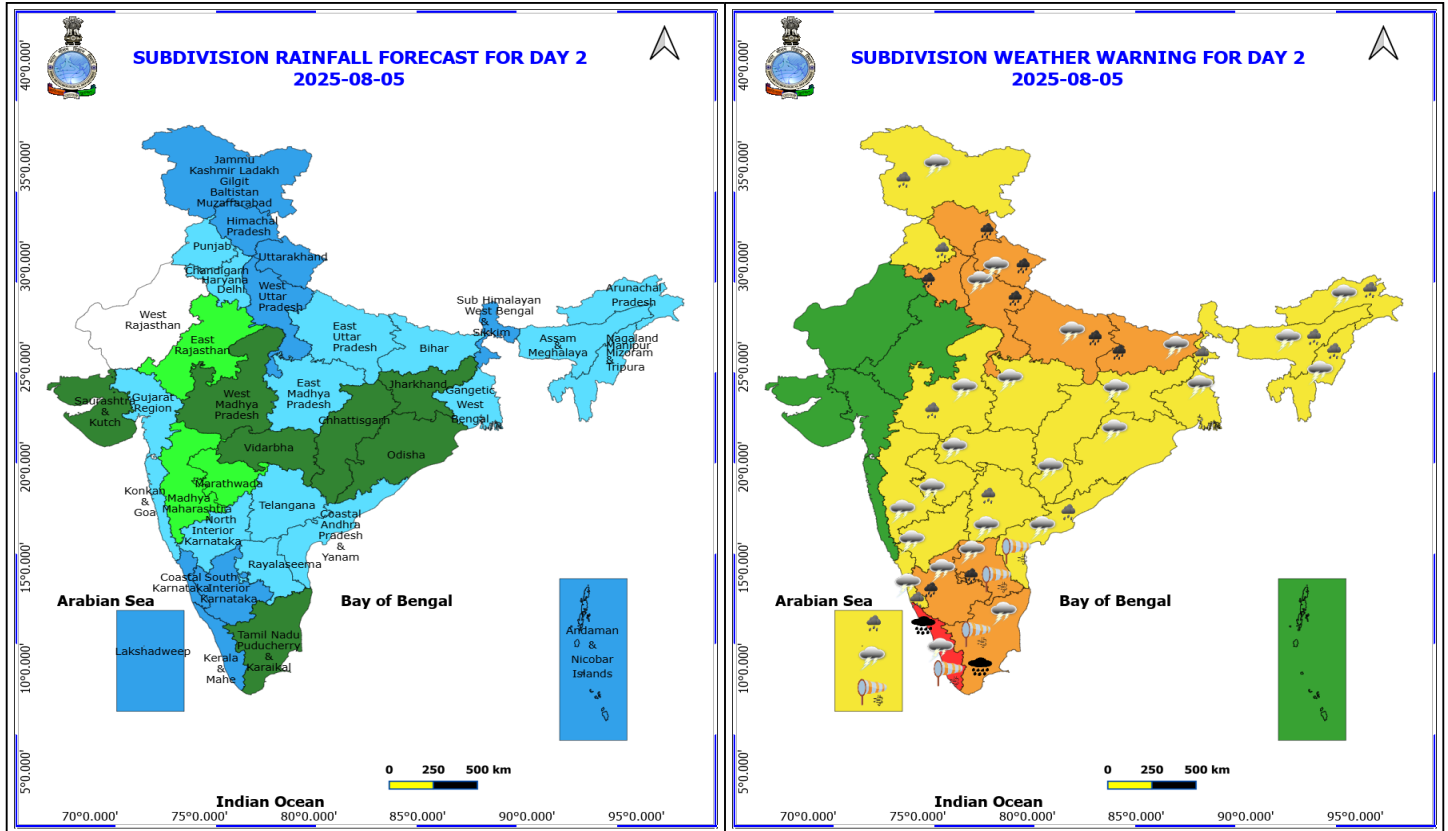
Forecast and warning for any day is valid from 0830 hours IST of day till 0830 hours IST of next day

For more details kindly visit <https://mausam.imd.gov.in> or contact 011-2434-4599

(Service to the nation since 1875)



Squally weather with wind speed reaching 40 - 50 kmph gusting to 60 kmph likely to prevail over few parts of eastcentral Arabian Sea, along and off Kerala, Karnataka coasts, over Lakshadweep, Maldives, Comorin areas, over Gulf of Mannar, Sri Lanka coasts, some parts of southwest Bay of Bengal.



5 August (Day 2)

- ❖ **Heavy to Very Heavy Rainfall with isolated Extremely Heavy Rainfall** very likely at isolated places over Kerala & Mahe and Tamil Nadu Puducherry & Karaikal.
- ❖ **Heavy to Very Heavy Rainfall** very likely at isolated places over Bihar, Haryana, Chandigarh & Delhi, Himachal Pradesh, Rayalaseema, South Interior Karnataka, Uttar Pradesh and Uttarakhand.
- ❖ **Heavy Rainfall** very likely at isolated places over Arunachal Pradesh, Assam & Meghalaya, Coastal Andhra Pradesh, Coastal Karnataka, Jammu-Kashmir-Ladakh-Gilgit-Baltistan-Muzaffarabad, Lakshadweep, Nagaland, Manipur, Mizoram and Tripura, Punjab, Sub Himalayan West Bengal & Sikkim, Telangana and West Madhya Pradesh.
- ❖ **Thunderstorm accompanied with lightning & gusty winds(30-40kmph)** very likely at isolated places over Bihar, Gangetic West Bengal, Interior Karnataka, Jharkhand, Odisha and West Madhya Pradesh.
- ❖ **Thunderstorm accompanied with Lightning** very likely at isolated places over Andhra Pradesh, Arunachal Pradesh, Assam & Meghalaya, Chhattisgarh, Coastal Karnataka, East Madhya Pradesh, Jammu-Kashmir-Ladakh-Gilgit-Baltistan-Muzaffarabad, Kerala & Mahe, Lakshadweep, Maharashtra, Nagaland, Manipur, Mizoram and Tripura, Tamil Nadu Puducherry & Karaikal, Telangana, Uttar Pradesh and Uttarakhand.
- ❖ **Strong Surface Winds** very likely at isolated places over Andhra Pradesh, Kerala & Mahe, Lakshadweep and Tamil Nadu Puducherry & Karaikal.

Squally wind with speed reaching 45 kmph to 55 kmph gusting to 65 kmph is likely to prevail along and off Somalia, many parts of west central Arabian Sea, some parts of southwest Arabian Sea.

Squally weather with wind speed reaching 40 - 50 kmph gusting to 60 kmph likely to prevail over few parts of

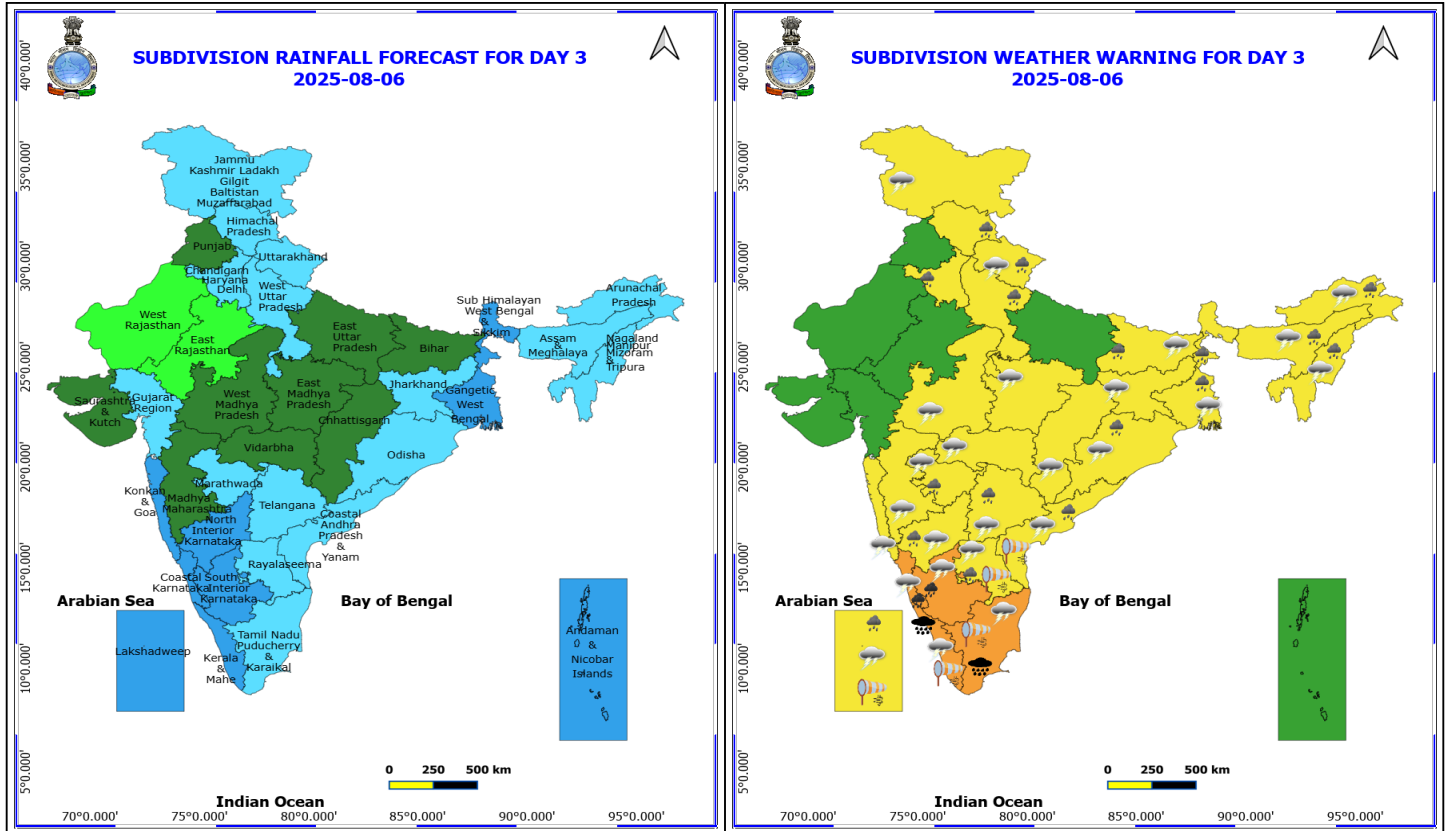
***Red color warning does not mean "Red Alert" Red color warning means "Take Action"**

Forecast and warning for any day is valid from 0830 hours IST of day till 0830 hours IST of next day

For more details kindly visit <https://mausam.imd.gov.in> or contact 011-2434-4599

(Service to the nation since 1875)

eastcentral adjoining southeast Arabian Sea, along and off Kerala, Karnataka coasts, over Lakshadweep, Maldives, Comorin areas, over Gulf of Mannar, Sri Lanka coasts, some parts of southwest Bay of Bengal.



6 August (Day 3)

- ❖ **Heavy to Very Heavy Rainfall with isolated Extremely Heavy Rainfall** very likely at isolated places over Kerala & Mahe and Tamil Nadu Puducherry & Karaikal.
- ❖ **Heavy to Very Heavy Rainfall** very likely at isolated places over Coastal Karnataka and South Interior Karnataka.
- ❖ **Heavy Rainfall** very likely at isolated places over Andhra Pradesh, Arunachal Pradesh, Assam & Meghalaya, Bihar, Haryana, Chandigarh & Delhi, Himachal Pradesh, Lakshadweep, Marathwada, Nagaland, Manipur, Mizoram and Tripura, North Interior Karnataka, Odisha, Telangana, Uttarakhand, West Bengal & Sikkim and West Uttar Pradesh.
- ❖ **Thunderstorm accompanied with lightning & gusty winds(30-40kmph)** very likely at isolated places over Bihar, Gangetic West Bengal, Interior Karnataka, Jharkhand, Odisha and West Madhya Pradesh.
- ❖ **Thunderstorm accompanied with Lightning** very likely at isolated places over Andhra Pradesh, Arunachal Pradesh, Assam & Meghalaya, Chhattisgarh, Coastal Karnataka, East Madhya Pradesh, Jammu-Kashmir-Ladakh-Gilgit-Baltistan-Muzaffarabad, Kerala & Mahe, Konkan & Goa, Lakshadweep, Maharashtra, Nagaland, Manipur, Mizoram and Tripura, Tamil Nadu Puducherry & Karaikal, Telangana and Uttarakhand.
- ❖ **Strong Surface Winds** very likely at isolated places over Andhra Pradesh, Kerala & Mahe, Lakshadweep and Tamil Nadu Puducherry & Karaikal.

Squally wind with speed reaching 45 kmph to 55 kmph gusting to 65 kmph is likely to prevail along and off Somalia, many parts of west central Arabian Sea, some parts of southwest Arabian Sea.

Squally weather with wind speed reaching 40 - 50 kmph gusting to 60 kmph likely to prevail over few parts of eastcentral, along and off Kerala, Karnataka coasts, over Lakshadweep, Maldives, Comorin areas, over Gulf of

***Red color warning does not mean "Red Alert" Red color warning means "Take Action"**

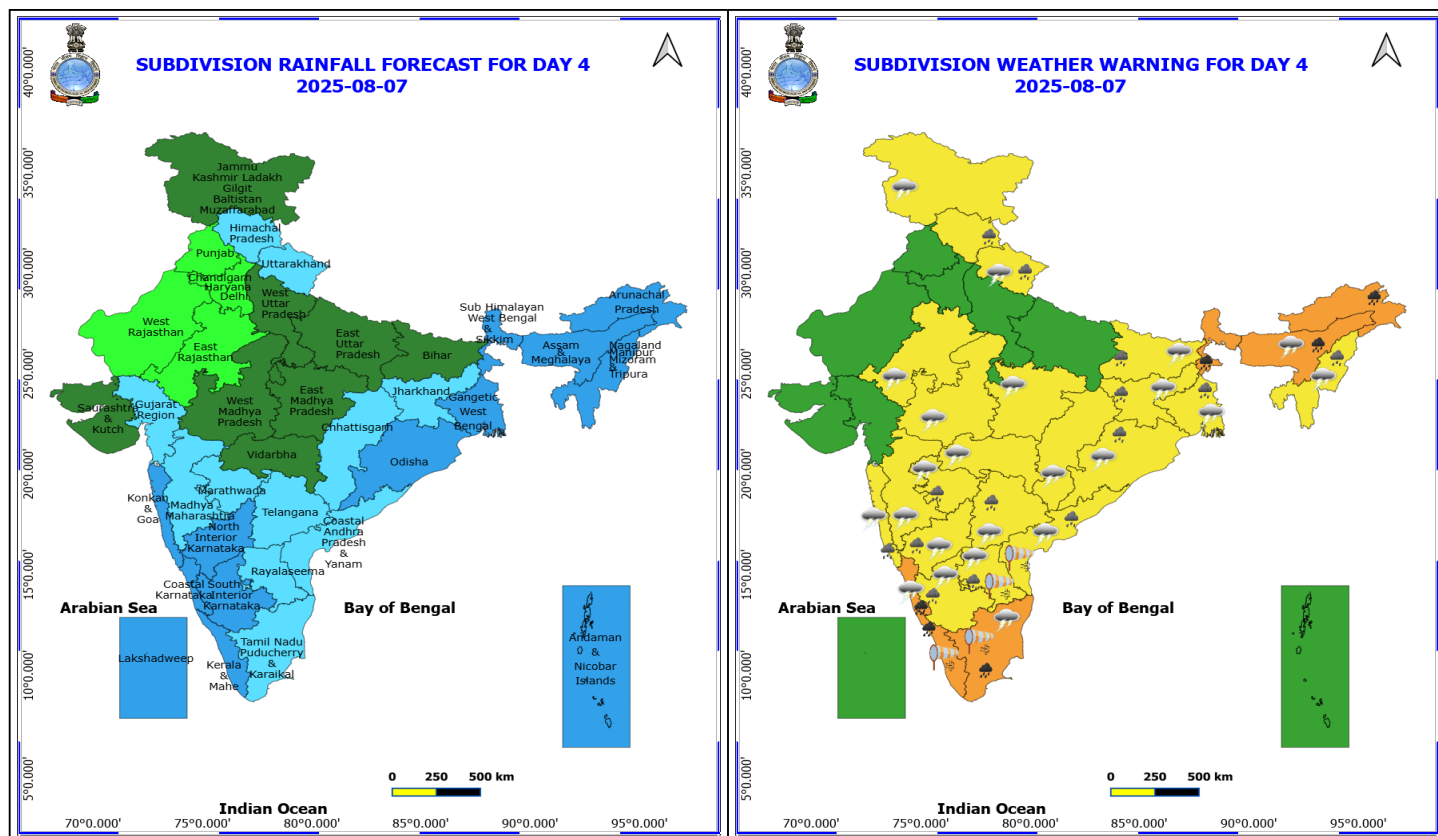
Forecast and warning for any day is valid from 0830 hours IST of day till 0830 hours IST of next day

For more details kindly visit <https://mausam.imd.gov.in> or contact 011-2434-4599

(Service to the nation since 1875)



Mannar, Sri Lanka coasts, some parts of south Bay of Bengal.



7 August (Day 4)

❖ **Heavy to Very Heavy Rainfall** likely at isolated places over Arunachal Pradesh, Assam & Meghalaya, Coastal Karnataka, Kerala & Mahe, Sub Himalayan West Bengal & Sikkim and Tamil Nadu Puducherry & Karaikal.

❖ **Heavy Rainfall** likely at isolated places over Andhra Pradesh, Bihar, Gangetic West Bengal, Himachal Pradesh, Interior Karnataka, Jharkhand, Konkan & Goa, Marathwada, Nagaland, Manipur, Mizoram and Tripura, Odisha, Telangana and Uttarakhand.

❖ **Thunderstorm accompanied with lightning & gusty winds(30-40kmph)** likely at isolated places over Bihar, Gangetic West Bengal, Interior Karnataka, Jharkhand, Odisha and West Madhya Pradesh.

❖ **Thunderstorm accompanied with Lightning** likely at isolated places over Andhra Pradesh, Assam & Meghalaya, Chhattisgarh, Coastal Karnataka, East Madhya Pradesh, East Rajasthan, Jammu-Kashmir-Ladakh-Gilgit-Baltistan-Muzaffarabad, Konkan & Goa, Maharashtra, Nagaland, Manipur, Mizoram and Tripura, Tamil Nadu Puducherry & Karaikal, Telangana and Uttarakhand.

❖ **Strong Surface Winds** likely at isolated places over Andhra Pradesh, Kerala & Mahe and Tamil Nadu Puducherry & Karaikal.

Squally wind with speed reaching 45 kmph to 55 kmph gusting to 65 kmph is likely to prevail along and off Somalia, Oman coasts, most parts of westcentral Arabian Sea, some parts of southwest Arabian Sea.

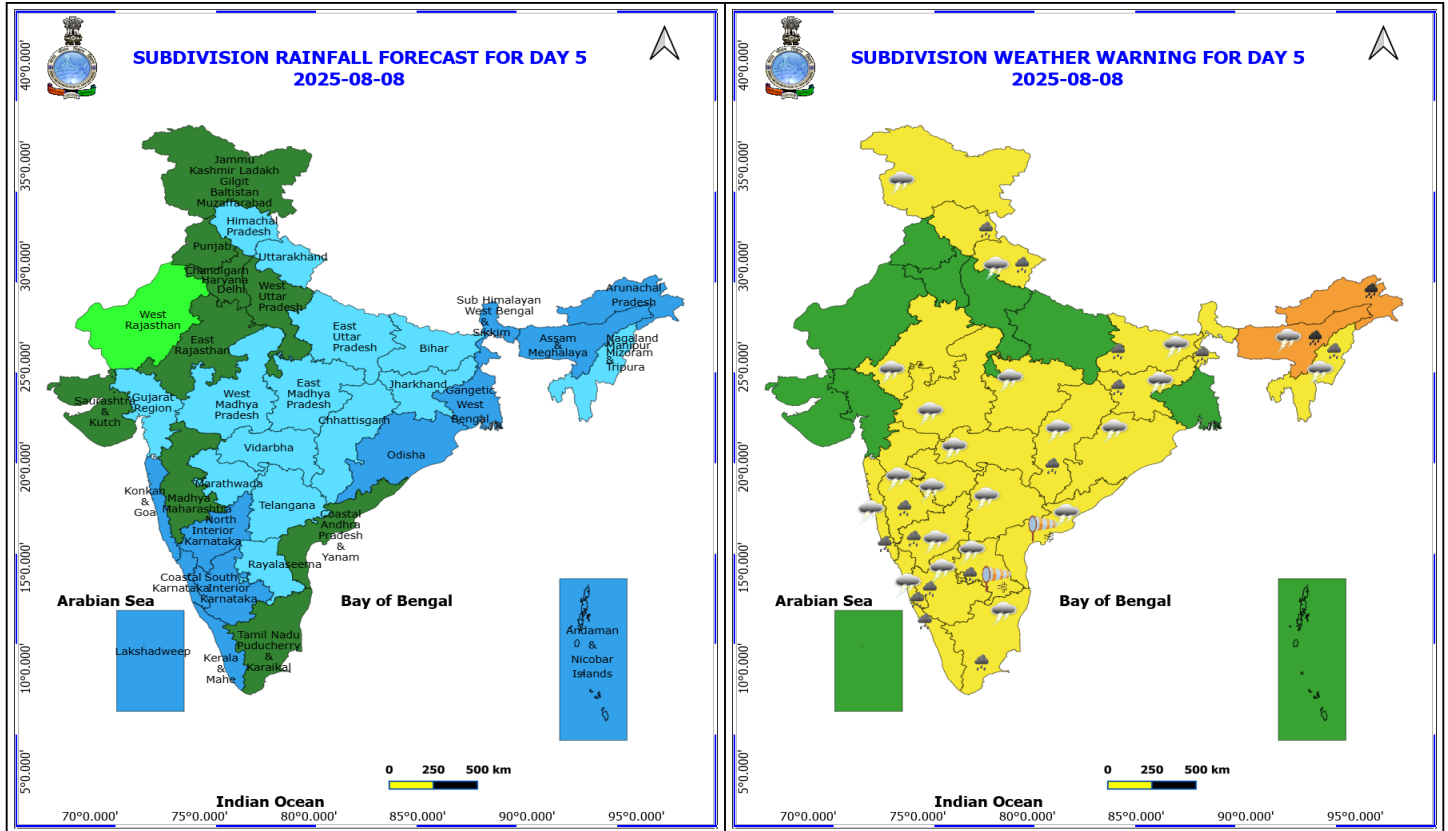
Squally weather with wind speed reaching 40 - 50 kmph gusting to 60 kmph likely to prevail over few parts of eastcentral, along and off Kerala, Karnataka coasts, over Lakshadweep, Maldives, Comorin areas, over Gulf of Mannar, Sri Lanka coasts, some parts of southwest Bay of Bengal.

***Red color warning does not mean "Red Alert" Red color warning means "Take Action"**

Forecast and warning for any day is valid from 0830 hours IST of day till 0830 hours IST of next day

For more details kindly visit <https://mausam.imd.gov.in> or contact 011-2434-4599

(Service to the nation since 1875)



8 August (Day 5)

- ❖ **Heavy to Very Heavy Rainfall** likely at isolated places over Arunachal Pradesh and Assam & Meghalaya.
- ❖ **Heavy Rainfall** likely at isolated places over Bihar, Chhattisgarh, Himachal Pradesh, Jharkhand, Karnataka, Kerala & Mahe, Konkan & Goa, Madhya Maharashtra, Nagaland, Manipur, Mizoram and Tripura, Rayalaseema, Sub Himalayan West Bengal & Sikkim, Tamil Nadu Puducherry & Karaikal and Uttarakhand.
- ❖ **Thunderstorm accompanied with lightning & gusty winds(30-40kmph)** likely at isolated places over Bihar, Interior Karnataka, Jharkhand, Odisha and West Madhya Pradesh.
- ❖ **Thunderstorm accompanied with Lightning** likely at isolated places over Andhra Pradesh, Assam & Meghalaya, Chhattisgarh, Coastal Karnataka, East Madhya Pradesh, East Rajasthan, Jammu-Kashmir-Ladakh-Gilgit-Baltistan-Muzaffarabad, Konkan & Goa, Maharashtra, Nagaland, Manipur, Mizoram and Tripura, Tamil Nadu Puducherry & Karaikal, Telangana and Uttarakhand.
- ❖ **Strong Surface Winds** likely at isolated places over Andhra Pradesh.

Squally wind with speed reaching 45 kmph to 55 kmph gusting to 65 kmph is likely to prevail along and off Somalia, Oman coasts, most parts of westcentral Arabian Sea, some parts of southwest Arabian Sea.

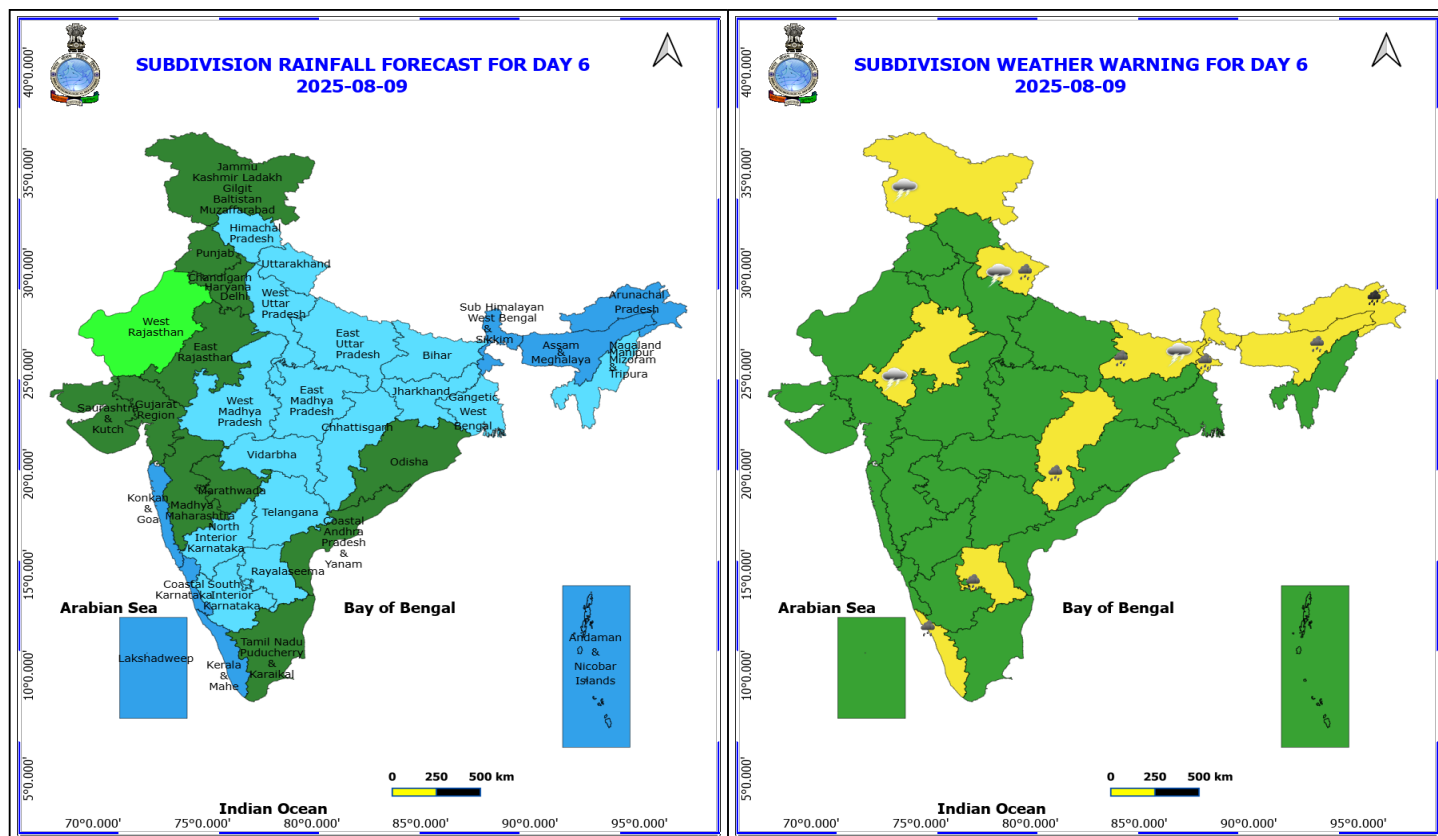
Squally weather with wind speed reaching 40 - 50 kmph gusting to 60 kmph likely to prevail over Comorin areas, over Gulf of Mannar, Sri Lanka coasts, few parts of southwest Bay of Bengal.

***Red color warning does not mean "Red Alert" Red color warning means "Take Action"**

Forecast and warning for any day is valid from 0830 hours IST of day till 0830 hours IST of next day

For more details kindly visit <https://mausam.imd.gov.in> or contact 011-2434-4599

(Service to the nation since 1875)



9 August (Day 6)

- ❖ **Heavy to Very Heavy Rainfall** likely at isolated places over Arunachal Pradesh.
- ❖ **Heavy Rainfall** likely at isolated places over Assam & Meghalaya, Bihar, Chhattisgarh, Kerala & Mahe, Rayalaseema, Sub Himalayan West Bengal & Sikkim and Uttarakhand.
- ❖ **Thunderstorm accompanied with lightning & gusty winds(30-40kmph)** likely at isolated places over Bihar and Jammu-Kashmir-Ladakh-Gilgit-Baltistan-Muzaffarabad.
- ❖ **Thunderstorm accompanied with Lightning** likely at isolated places over East Rajasthan and Uttarakhand.

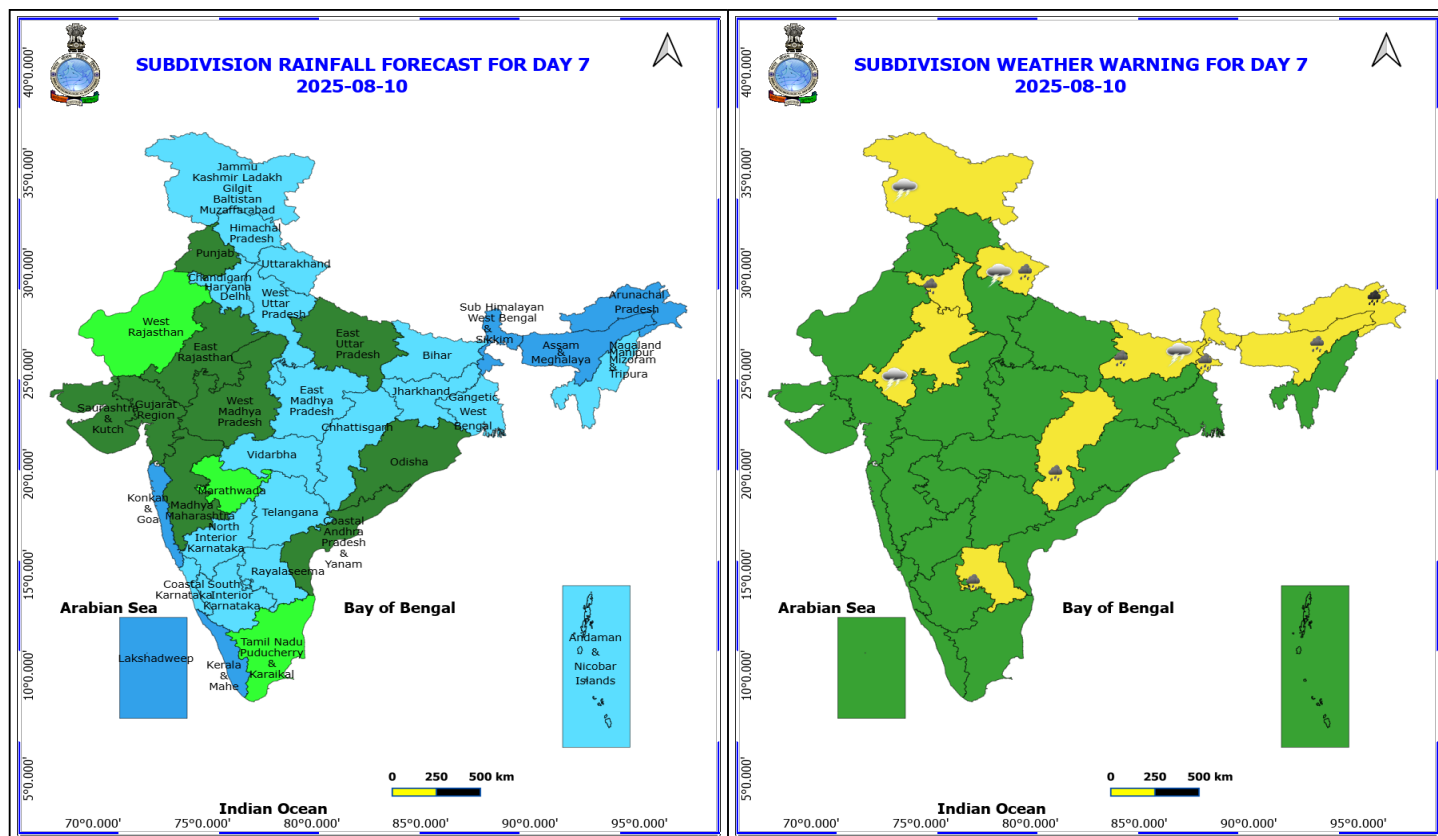
No Fishermen Warning

***Red color warning does not mean "Red Alert" Red color warning means "Take Action"**

Forecast and warning for any day is valid from 0830 hours IST of day till 0830 hours IST of next day

For more details kindly visit <https://mausam.imd.gov.in> or contact 011-2434-4599

(Service to the nation since 1875)



10 August (Day 7)

- ❖ **Heavy to Very Heavy Rainfall** likely at isolated places over Arunachal Pradesh.
- ❖ **Heavy Rainfall** likely at isolated places over Assam & Meghalaya, Bihar, Chhattisgarh, Haryana, Chandigarh & Delhi, Rayalaseema, Sub Himalayan West Bengal & Sikkim and Uttarakhand.
- ❖ **Thunderstorm accompanied with lightning & gusty winds(30-40kmph)** likely at isolated places over Bihar and Jammu-Kashmir-Ladakh-Gilgit-Baltistan-Muzaffarabad.
- ❖ **Thunderstorm accompanied with Lightning** likely at isolated places over East Rajasthan and Uttarakhand.

No Fishermen Warning

***Red color warning does not mean "Red Alert" Red color warning means "Take Action"**

Forecast and warning for any day is valid from 0830 hours IST of day till 0830 hours IST of next day

For more details kindly visit <https://mausam.imd.gov.in> or contact 011-2434-4599

(Service to the nation since 1875)

Flash Flood Warnings

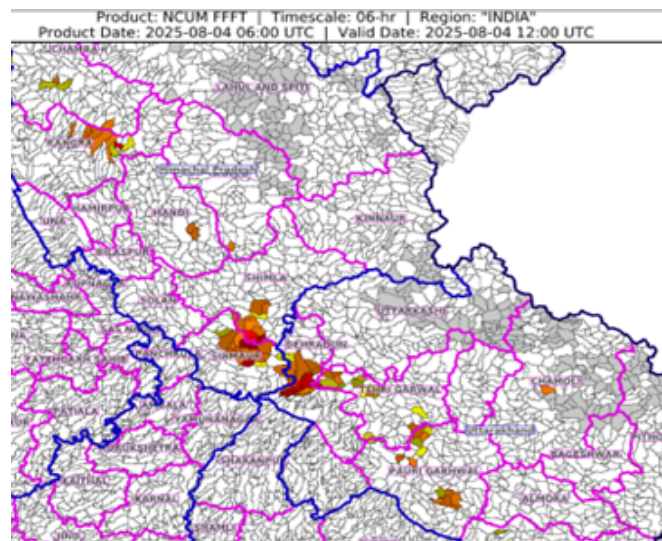
24 hours Outlook for the Flash Flood Risk (FFR) till 1130 IST of 05-08-2025 :

Low to Moderate flash flood risk likely over few watersheds & neighbourhoods of following Met Sub-divisions during next 24 hours.

Arunachal Pradesh - East Kameng, East Siang, Lower Subansiri, Upper Subansiri, Papum-Pare, Tirap, Changlang, West Kameng, West Siang, Upper Siang and Kurung Kumey districts.

Assam & Meghalaya - Barpeta, Bongaigaon, Cachar, Chirang, Dhemaji, Dibrugarh, Goalpara, Kokrajhar, Lakhimpur, N.C Hills, Sibsagar, Sonitpur, Karimganj, East Garo Hills, East Khasi Hills, South Garo Hills, West Garo Hills, West Khasi Hills, Dhubri and Jaintia Hills districts.

Surface runoff/ Inundation may occur at some fully saturated soils & low-lying areas over Area of Concern (AoC) as shown in map due to expected rainfall occurrence in next 24 hours.



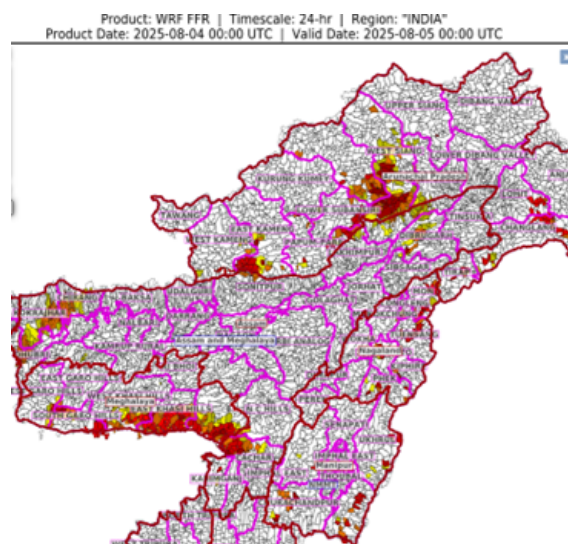
24 hours Outlook for the Flash Flood Risk (FFR) till 1130 IST of 05-08-2025 :

Low to Moderate flash flood risk likely over few watersheds & neighbourhoods of following Met Sub-divisions during next 24 hours.

Himachal Pradesh - Chamba, Hamirpur, Kangra, Kullu, Mandi and Sirmaur districts.

Uttarakhand - Almora, Bageshwar, Chamoli, Champawat, Dehradun, Haridwar, Nanital, Pauri Garhwal, Pithoragarh, Rudrapur, Tehri Garhwal and Uttarkashi districts.

Surface runoff/ Inundation may occur at some fully saturated soils & low-lying areas over Area of Concern (AoC) as shown in map due to expected rainfall occurrence in next 24 hours.



*Red color warning does not mean "Red Alert" Red color warning means "Take Action"

Forecast and warning for any day is valid from 0830 hours IST of day till 0830 hours IST of next day

For more details kindly visit <https://mausam.imd.gov.in> or contact 011-2434-4599

(Service to the nation since 1875)



Table-1

7 Days Rainfall Forecast

S.No.	Subdivision	4- Aug	5- Aug	6- Aug	7- Aug	8- Aug	9- Aug	10- Aug
		Day 1	Day 2	Day 3	Day 4	Day 5	Day 6	Day 7
1	ANDAMAN & NICOBAR ISLANDS	SCT	WS	WS	WS	WS	WS	FWS
2	ARUNACHAL PRADESH	FWS	FWS	FWS	WS	WS	WS	WS
3	ASSAM & MEHGHALAYA	WS	FWS	FWS	WS	WS	WS	WS
4	N. M. M. & T.	WS	FWS	FWS	WS	FWS	FWS	FWS
5	S.H. WEST BENGAL & SIKKIM	WS	WS	WS	WS	WS	WS	WS
6	GANGETIC WEST BENGAL	WS	FWS	WS	WS	WS	FWS	FWS
7	ODISHA	SCT	SCT	FWS	WS	WS	SCT	SCT
8	JHARKHAND	SCT	SCT	FWS	FWS	FWS	FWS	FWS
9	BIHAR	WS	FWS	SCT	SCT	FWS	FWS	FWS
10	EAST UTTAR PRADESH	WS	FWS	SCT	SCT	FWS	FWS	SCT
11	WEST UTTAR PRADESH	WS	WS	FWS	SCT	SCT	FWS	FWS
12	UTTARAKHAND	WS	WS	FWS	FWS	FWS	FWS	FWS
13	HARYANA, CHD & DELHI	SCT	FWS	FWS	ISOL	SCT	SCT	FWS
14	PUNJAB	SCT	FWS	SCT	ISOL	SCT	SCT	SCT
15	HIMACHAL PRADESH	WS	WS	FWS	FWS	FWS	FWS	FWS
16	JAMMU AND KASHMIR AND LADAKH	SCT	WS	FWS	SCT	SCT	SCT	FWS
17	WEST RAJASTHAN	DRY	DRY	ISOL	ISOL	ISOL	ISOL	ISOL
18	EAST RAJASTHAN	ISOL	ISOL	ISOL	ISOL	SCT	SCT	SCT
19	WEST MADHYA PRADESH	SCT	SCT	SCT	SCT	FWS	FWS	SCT
20	EAST MADHYA PRADESH	FWS	FWS	SCT	SCT	FWS	FWS	FWS
21	GUJRAT REGION	FWS	FWS	FWS	FWS	FWS	SCT	SCT
22	SAURASHTRA & KUTCH	SCT	SCT	SCT	SCT	SCT	SCT	SCT
23	KONKAN & GOA	FWS	FWS	WS	WS	WS	WS	WS
24	MADHYA MAHARASHTRA	ISOL	ISOL	SCT	FWS	SCT	SCT	SCT
25	MARATHWADA	ISOL	ISOL	FWS	FWS	FWS	SCT	ISOL
26	VIDARBHA	SCT	SCT	SCT	SCT	FWS	FWS	FWS
27	CHATTISGARH	SCT	SCT	SCT	FWS	FWS	FWS	FWS
28	COASTAL ANDHRA PRADESH	SCT	FWS	FWS	FWS	SCT	SCT	SCT
29	TELANGANA	SCT	FWS	FWS	FWS	FWS	FWS	FWS
30	RAYALASEEMA	SCT	FWS	FWS	FWS	FWS	FWS	FWS
31	TAMILNADU & PUDUCHERRY	SCT	SCT	FWS	FWS	SCT	SCT	ISOL
32	COSTAL KARNATAKA	WS	WS	WS	WS	WS	WS	FWS
33	NORTH INTERIOR KARNATAKA	SCT	FWS	WS	WS	WS	FWS	FWS
34	SOUTH INTERIOR KARNATAKA	WS	WS	WS	WS	WS	FWS	FWS
35	KERALA	WS	WS	WS	WS	WS	WS	WS
36	LAKSHDWEEP	WS	WS	WS	WS	WS	WS	WS

Legend	Category	%Stations
WS	Widespread/Most Places	76-100
FWS	Fairly Widespread/Many Places	51-75
SCT	Scattered/ A Few Places	26-50
ISOL	Isolated Places	1-25
DRY	No Rain	0

*Red color warning does not mean "Red Alert" Red color warning means "Take Action"

Forecast and warning for any day is valid from 0830 hours IST of day till 0830 hours IST of next day

For more details kindly visit <https://mausam.imd.gov.in> or contact 011-2434-4599

(Service to the nation since 1875)

Fig. 1: Maximum Temperatures Dated 2025-08-04

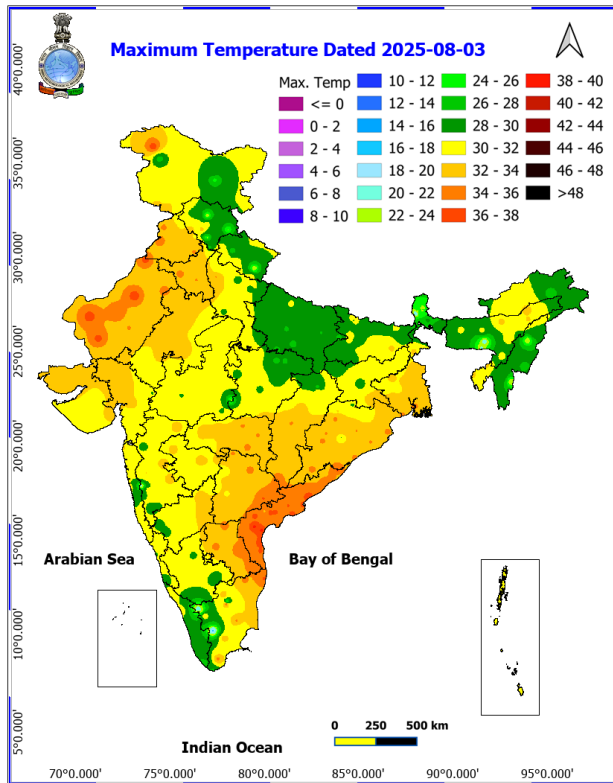


Fig. 2: Departure of Maximum Temp. Dated 2025-08-04

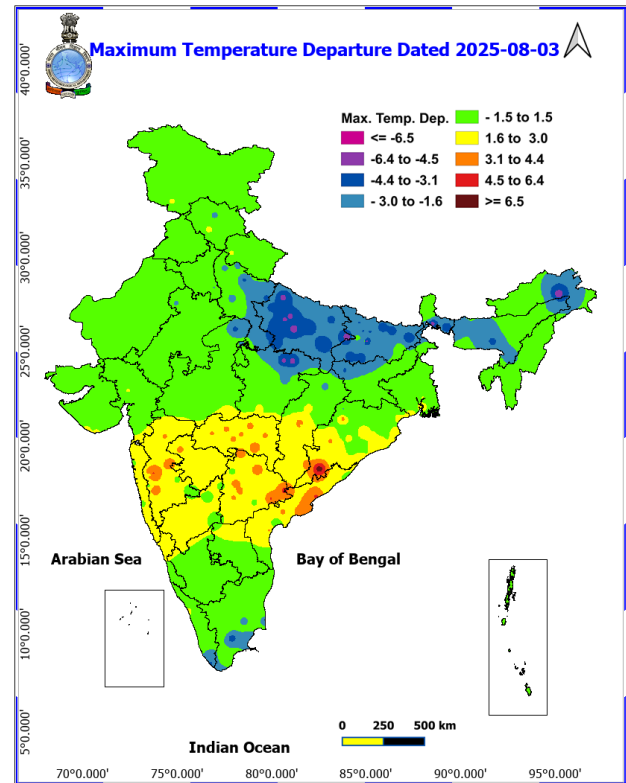


Fig. 3: Minimum Temperatures Dated 2025-08-04

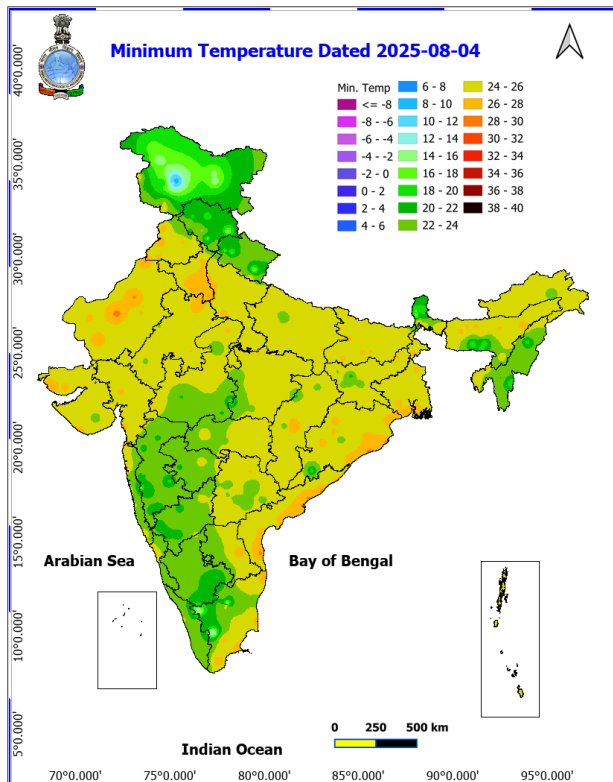
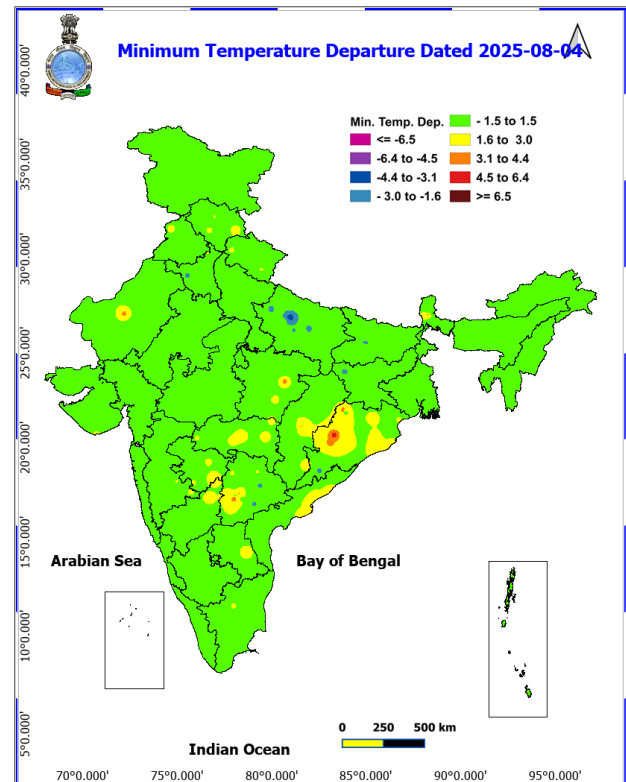
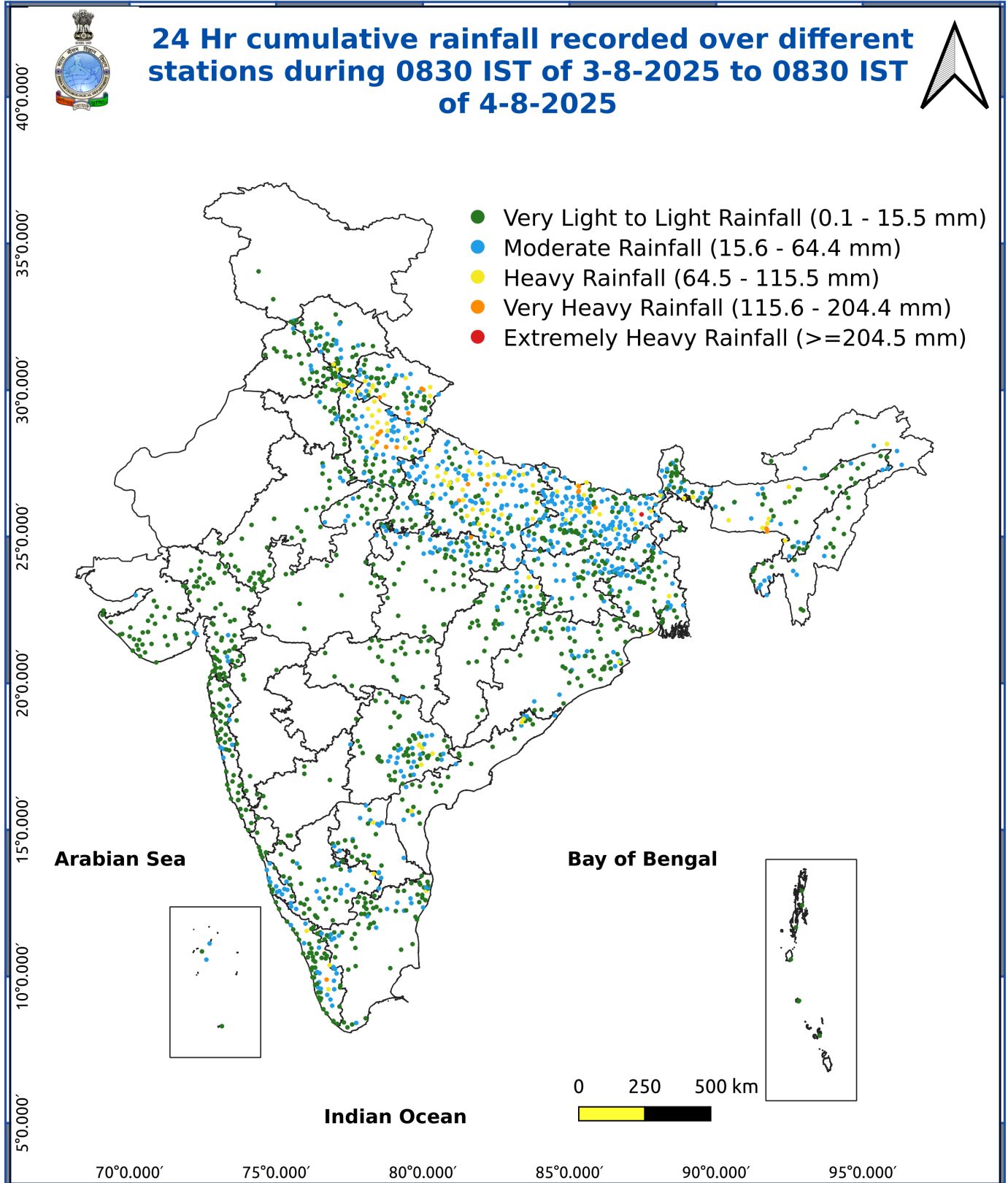


Fig. 4: Departure of Minimum Temp. Dated 2025-08-04





*Red color warning does not mean "Red Alert" Red color warning means "Take Action"

Forecast and warning for any day is valid from 0830 hours IST of day till 0830 hours IST of next day

For more details kindly visit <https://mausam.imd.gov.in> or contact 011-2434-4599

(Service to the nation since 1875)

Impact & Action Suggested due to

- **Extremely heavy rainfall** very likely at isolated places over Uttar Pradesh and Uttarakhand on 04th and Kerala, ghat areas of Tamil Nadu on 05th & 06th August.
- Isolated **very heavy rainfall** over Bihar, Himachal Pradesh on 04th & 05th; Sub-Himalayan West Bengal & Sikkim on 04th & 07th; Uttarakhand, Haryana, Uttar Pradesh on 05th; Arunachal Pradesh on 04th & during 07th-10th August; Assam & Meghalaya on 04th, 07th & 08th August.

Impact Expected

- Localized Flooding of roads, water logging in low lying areas and closure of underpasses mainly in urban areas of the above region.
- Occasional reduction in visibility due to heavy rainfall.
- Disruption of traffic in major cities due to water logging in roads leading to increased travel time.
- Minor damage to kutcha roads.
- Possibilities of damage to vulnerable structure.
- Localized Landslides/Mudslides/landslips/mudslips/landsinks/mudsinks.
- Damage to horticulture and standing crops in some areas due to inundation.
- It may lead to riverine flooding in some river catchments (for riverine flooding please visit Web page of CWC)

Action Suggested

- Check for traffic congestion on your route before leaving for your destination.
- Follow any traffic advisories that are issued in this regard.
- Avoid going to areas that face the water logging problems often.
- Avoid staying in vulnerable structure.

Agromet advisories for various parts of the country

Agromet advisories for likely impact of Heavy / Heavy to Very Heavy / Extremely Heavy Rainfall

- In **Uttar Pradesh**, postpone sowing of pigeon pea, chilli, onion and planting of banana and papaya and make necessary arrangements for drainage of excess water from the fields in **Bundelkhand Zone**. Make proper arrangement for drainage in fields of autumn sugarcane, spring sugarcane, paddy, pigeon pea, maize, green gram, black gram and vegetables in **South Western Semi-Arid Zone** and pigeon pea, soybean, maize, groundnut, green gram, black gram and barnyard millet in **Eastern Plain Zone**.
- In **Uttarakhand**, to avoid waterlogging, maintain proper drainage channels in fields of rice, sugarcane, maize, black gram, green gram, soybean, and vegetables in **Bhabar and Tarai Zone** and barnyard millet, finger millet, green gram and black gram in **Sub Humid Sub Tropic Zone**. Postpone sowing of green gram and soybean in **Nainital** district. In **Hill Zone**, strengthen the bunds to prevent surface runoff of water. Postpone sowing of vegetable pea in case of excessive wet soil conditions. Maintain proper drainage channels in the crop fields.
- In **Himachal Pradesh**, cover the cauliflower nursery with plastic sheets to prevent damage from heavy rainfall in **High Hills Sub Temperate Wet Zone**. Make proper drainage channels in vegetable fields in **Mid Hills Sub Humid Zone**; rice, maize and vegetable fields in **Sub Montane and Low Hills Sub Tropical Zone** and kidney beans, finger millet, cucurbits and vegetables in **High Hills Sub Temperate Wet Zone**.
- In **Arunachal Pradesh**, postpone all fresh sowing operations till cessation of heavy rains. Avoid fresh transplanting of rice in lowlands during heavy rainfall. Cover rice fields with natural mulches like dry leaves or straw to avert the adverse impact of rain. Ensure proper drainage in rice, maize, finger millet, soybean and vegetables and fruit orchards to avoid waterlogging. Provide strong support to fruit-bearing plants to prevent them from bending or breaking during heavy rains.
- In **Assam**, postpone the sowing of sesame, green gram and pigeon pea till cessation of heavy rains in **Kokrajhar** and **Bongaigaon** districts. In **Central Brahmaputra Valley Zone**, harvest matured jute immediately and keep the bundles of harvested produce in high land or shed to avoid retting in contaminated water. Avoid

*Red color warning does not mean "Red Alert" Red color warning means "Take Action"

Forecast and warning for any day is valid from 0830 hours IST of day till 0830 hours IST of next day

For more details kindly visit <https://mausam.imd.gov.in> or contact 011-2434-4599

(Service to the nation since 1875)

sowing of sesame during heavy rainfall. To prevent waterlogging, ensure proper drainage in *Sali* rice, green gram and pigeon pea fields in **Lower Brahmaputra Valley Zone**; *Sali* rice, turmeric and already sown sesame fields in **Central Brahmaputra Valley Zone**; rice and sesame fields in **Hill Zone** and *Sali* rice fields in **North Bank Plain Zone**, **Upper Brahmaputra Valley Zone** and **Barak Valley Zone**.

- In **Meghalaya**, avoid transplanting of rice during heavy rainfall. Ensure proper drainage in rice, maize, turmeric, chilli, okra and bitter gourd fields to prevent waterlogging. Provide staking / support to tall and fragile crops like banana, papaya, bottle gourd etc. to prevent lodging.
- In **Sub-Himalayan West Bengal**, make provision to drain out excess water from rice, ginger, vegetable fields and fruit orchards in **Hill Zone** and *aman* paddy and vegetable fields in **Terai Zone**. Cover the chilli seedlings with plastic to protect them from heavy rains in **Terai Zone**.
- In **Bihar**, ensure proper drainage in maize, vegetables, ragi, kodo, sava, etc. in low-lying areas and strengthen field bunds in **South Bihar Alluvial Zone**. Maintain proper drainage in maize fields and do not allow rain water to accumulate in the fields of ragi, kodo, sava, china etc. in **North East Alluvial Zone**.
- In **Kerala**, provide adequate drainage in fields of rice, coconut, banana and ginger. Provide support to banana plantations. Make the vegetable pandals stronger.
- In **Tamil Nadu**, provide support to sugarcane and banana plants to prevent lodging. Provide proper drainage facility in rice nursery in **North Eastern Zone** and standing crop fields in **Cauvery Delta Zone**.
- In **Karnataka**, provide adequate drainage facilities in arecanut and banana plantations in **Coastal Zone**; fields of maize, cotton, ginger and plantations of arecanut in **Hill Zone** and arecanut and coconut plantations in **Southern Transition Zone**.

Livestock / Fishery

- Keep the animals inside the shed during heavy rainfall and provide them balanced feed.
- Store feed and fodder in a safe place to prevent spoilage.
- Construct an outlet with proper netting around the ponds to drain out excess water, thereby preventing fish from escaping in case of overflow.

Agromet advisories for likely impact of Thunderstorm / Gusty Winds / Squally Winds

(Based on the IBF and advisories issued by different AMFUs)

Provide mechanical support to horticultural crops and staking or support to vegetables and young fruit plants / fruit-bearing plants to avoid lodging due to strong winds.

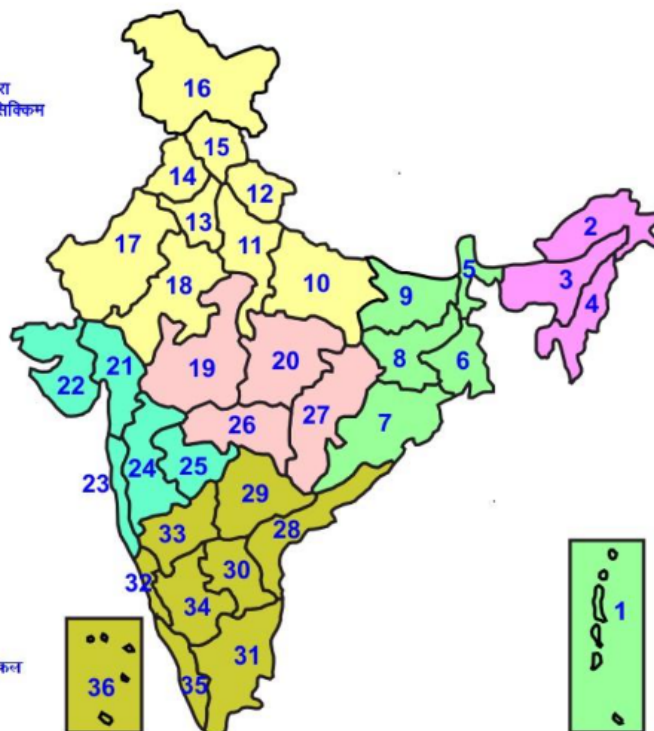
Legends & abbreviations:

Region wise classification of meteorological Sub-Divisions:

- **Northwest India:** Western Himalayan Region (Jammu-Kashmir-Ladakh-Gilgit-Baltistan-Muzaffarabad, Himachal Pradesh and Uttarakhand); Punjab, Haryana-Chandigarh-Delhi; West Uttar Pradesh, East Uttar Pradesh, West Rajasthan and East Rajasthan.
- **Central India:** West Madhya Pradesh, East Madhya Pradesh, Vidarbha and Chhattisgarh.
- **East India:** Bihar, Jharkhand, Sub-Himalayan West Bengal & Sikkim; Gangetic West Bengal, Odisha and Andaman & Nicobar Islands.
- **Northeast India:** Arunachal Pradesh, Assam & Meghalaya and Nagaland, Manipur, Mizoram & Tripura.
- **West India:** Gujarat Region, Saurashtra & Kutch, Konkan & Goa, Madhya Maharashtra and Marathawada.
- **South India:** Coastal Andhra Pradesh & Yanam, Telangana, Rayalaseema, Coastal Karnataka, North Interior Karnataka, South Interior Karnataka, Kerala & Mahe, Tamil Nadu, Puducherry & Karaikal and Lakshadweep.

LEGENDS

- 1 अंडमान और निकोबार द्वीप समुह
- 2 अरुणाचल प्रदेश
- 3 असम और मेघालय
- 4 नागालैंड मनीपुर मीजोरम और त्रिपुरा
- 5 उप हिमालय पश्चिम बंगाल एवं सिक्किम
- 6 पश्चिम बंगाल
- 7 ओडिशा
- 8 झारखंड
- 9 बिहार
- 10 पूर्वी उत्तर प्रदेश
- 11 पश्चिम उत्तर प्रदेश
- 12 उत्तराखंड
- 13 हरियाणा चंडीगढ़ एवं दिल्ली
- 14 पंजाब
- 15 हिमाचल प्रदेश
- 16 जम्मू एवं कश्मीर एवं लद्दाख
- 17 पश्चिम राजस्थान
- 18 पूर्वी राजस्थान
- 19 पश्चिम मध्य प्रदेश
- 20 पूर्वी मध्य प्रदेश
- 21 गुजरात क्षेत्र
- 22 सौराष्ट्र एवं कच्छ
- 23 कोंकण एवं गोवा
- 24 मध्य महाराष्ट्र
- 25 मराठावाड़ा
- 26 विदर्भ
- 27 छत्तीसगढ़
- 28 तटीय आंध्र प्रदेश एवं यनम
- 29 तेलंगाना
- 30 रायलसीमा
- 31 तमिलनाडु, पुदुचेरी एवं कराईकल
- 32 तटिय कर्नाटक
- 33 आंतरिक उत्तरी कर्नाटक
- 34 आंतरिक दक्षिणी कर्नाटक
- 35 केरल एवं माहे
- 36 लक्षद्वीप



1. Andaman & Nicobar Islands
2. Arunachal Pradesh
3. Assam & Meghalaya
4. Nagaland, Manipur, Mizoram & Tripura
5. Sub-Himalayan West Bengal & Sikkim
6. Gangetic West Bengal
7. Orissa
8. Jharkhand
9. Bihar
10. East Uttar Pradesh
11. West Uttar Pradesh
12. Uttarakhand
13. Haryana, Chd & Delhi
14. Punjab
15. Himachal Pradesh
16. Jammu & Kashmir and Ladakh
17. West Rajasthan
18. East Rajasthan
19. West Madhya Pradesh
20. East Madhya Pradesh
21. Gujarat
22. Saurashtra
23. Konkan & Goa
24. Madhya Maharashtra
25. Marathawada
26. Vidharbha
27. Chhattisgarh
28. Coastal Andhra Pradesh & Yanam
29. Telangana
30. Rayalaseema
31. Tamilnadu, Puducherry & Karaikal
32. Coastal Karnataka
33. North Interior Karnataka
34. South Interior Karnataka
35. Kerala & Mahe
36. Lakshadweep

SPATIAL DISTRIBUTION (% of Stations reporting)


% Stations	Category	% Stations	Category
76-100	Widespread (WS/Most Places)	26-50	Scattered (SCT/ A Few Places)
51-75	Fairly Widespread (FWS/ Many Places)	1-25	Isolated (ISOL)


Subdivision Colour


- NO WARNING
- WATCH (BE UPDATED)
- ALERT (BE PREPARED TO TAKE ACTION)
- WARNING (TAKE ACTION)

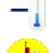
Probabilistic Forecast


Terms	Probability of Occurrence (%)
Unlikely	< 25
Likely	25 - 50
Very Likely	50 - 75
Most Likely	> 75


-  Heavy Rain


 Thunderstorm & Lightning


 Strong surface winds


 Cold Wave


 Hot & Humid


 Very Heavy Rain


 Hailstorm


 Heat Wave


 Cold Day


 Extremely Heavy Rain


 Dust Storm


 Hot Day

 Ground Frost

 Heavy Snow

 Dust Raising Winds

 Warm Night

 Fog

*Red color warning does not mean "Red Alert" Red color warning means "Take Action"

Forecast and warning for any day is valid from 0830 hours IST of day till 0830 hours IST of next day

For more details kindly visit <https://mausam.imd.gov.in> or contact 011-2434-4599

(Service to the nation since 1875)

LEGENDS

WARNING

WARNING (TAKE ACTION)
ALERT (BE PREPARED)
WATCH (BE UPDATED)
NO WARNING (NO ACTION)

Probabilistic Forecast

Terms	Probability of Occurrence (%)
Unlikely	< 25
Likely	25 - 50
Very Likely	50 - 75
Most Likely	> 75



Heavy: 64.5 to 115.5 mm/cm *
Very Heavy: 115.6 to 204.4 mm/cm *
Extremely Heavy: > 204.4 mm/cm *



When maximum temperature of a station reaches $\geq 40^{\circ}\text{C}$ for plains and $\geq 30^{\circ}\text{C}$ for hilly regions
(a) Based on Departure from normal

Heat Wave: Maximum Temperature Departure from normal 4.5°C to 6.4°C .
Severe Heat Wave: Maximum Temperature Departure from normal $\geq 6.5^{\circ}\text{C}$

(b). Based on Actual maximum temperature

Heat Wave: When actual maximum temperature $\geq 45^{\circ}\text{C}$.
Severe Heat Wave: When actual maximum temperature $\geq 47^{\circ}\text{C}$

(c). Criteria for heat wave for coastal stations

When maximum temperature departure is $> 4.5^{\circ}\text{C}$ from normal. Heat Wave may be described provided maximum temperature $\geq 37^{\circ}\text{C}$



When maximum temperature remains 40°C

Warm Night: When minimum temperature departure 4.5°C to 6.4°C .
Severe Warm Night: When minimum temperature departure $> 6.4^{\circ}\text{C}$.



When minimum temperature of a station $\leq 10^{\circ}\text{C}$ for plains and $\leq 0^{\circ}\text{C}$ for hilly regions.

(a). Based on departure

Cold Wave: Minimum Temperature Departure from normal -4.5°C to -6.4°C .
Severe Cold Wave: Minimum Temperature Departure from normal $\leq -6.5^{\circ}\text{C}$

(b) Based on actual Minimum Temperature (for Plains only)

Cold Wave: When Minimum Temperature is $\leq 4.0^{\circ}\text{C}$
Severe Cold Wave: When Minimum Temperature is $\leq 2.0^{\circ}\text{C}$

(c) For Coastal Stations

When Minimum Temperature departure is $\leq -4.5^{\circ}\text{C}$ & actual Minimum Temperature is $\leq 15^{\circ}\text{C}$



When minimum temperature of a station $\leq 10^{\circ}\text{C}$ for plains and $\leq 0^{\circ}\text{C}$ for hilly regions
Based on departure

Cold Day: Maximum Temperature Departure from normal -4.5°C to -6.4°C .
Severe Cold Day: Maximum Temperature Departure from normal $\leq -6.5^{\circ}\text{C}$



Phenomenon of small droplets suspended in air and the horizontal visibility $< 1\text{km}$

Moderate Fog: When the visibility between 500-200 metres
Dense Fog: when the visibility between 50-200 metres
Very Dense Fog: when the visibility < 50 metres



Sudden electrical discharges manifested by a flash of light (Lightning) and a sharp rumbling sound (thunder)



An ensemble of particles of dust or sand energetically lifted to great heights by a strong and turbulent wind.



Ice deposits on ground

Air temperature $\leq 4^{\circ}\text{C}$ (over Plains)



A strong wind that rises suddenly, lasts for at least 1 minute.

Moderate: Wind speed 52-61 kmph
Severe: Wind speed 62-87 kmph
Very Severe: Wind speed > 87 kmph



Effect of various waves in the sea over specific area

Rough to very rough: Wind speed 41-62 kmph (22-33 knots) & Wave height 2.5-6 metre
High to very high: Wind speed 63-117 kmph (34-63 knots) & Wave height 6-14 metre
Phenomenal: Wind speed > 117 kmph (> 63 knots) & Wave height > 14 metre



Cyclonic Storm: Wind speed 62-87 kmph (34-47 knots)

Severe Cyclonic Storm: Wind speed 88-117 kmph (48-63 knots)
Very Severe Cyclonic Storm: Wind speed 118-165 kmph (64-89 knots)
Extremely Severe Cyclonic Storm: Wind speed 166-220 kmph (90-119 knots)
Super Cyclone Storm: Wind speed > 220 kmph (> 119 knots)

*Red color warning does not mean "Red Alert" Red color warning means "Take Action"

Forecast and warning for any day is valid from 0830 hours IST of day till 0830 hours IST of next day

For more details kindly visit <https://mausam.imd.gov.in> or contact 011-2434-4599

(Service to the nation since 1875)