

2025-09-04

Time of Issue: 12:42:00 hours IST
(Mid-Day)

ALL INDIA WEATHER SUMMARY AND FORECAST BULLETIN

Significant Weather Features

Weather Forecast and Warnings:

West India:

Extremely heavy rainfall very likely at isolated places over Gujarat Region during 04th-06th; Saurashtra & Kutch on 06th & 07th September.

Isolated heavy rainfall is very likely over Konkan & Goa, Madhya Maharashtra during 04th-06th; Marathwada on 04th; Gujarat State on 08th September with **very heavy rainfall** over Konkan & Goa, Madhya Maharashtra, Saurashtra & Kutch on 04th & 05th; Gujarat Region on 07th September.

Light to moderate rainfall accompanied with thunderstorm & lightning at a few/many places very likely over the region during next 5 days.

Northwest India:

Isolated heavy rainfall likely to continue Uttarakhand and Rajasthan during 04th-08th; Punjab during 04th & 10th; Haryana, Chandigarh on 04th, 05th & during 08th-10th; East Uttar Pradesh on 09th September with isolated **very heavy rainfall very likely over West Rajasthan on 06th & 07th; East Rajasthan during 04th-07th September.**

Light/moderate rainfall at many/some places over the region during next 7 days.

East & Central India:

Isolated heavy rainfall likely over West Madhya Pradesh during 04th-06th; East Madhya Pradesh on 04th & 05th; Vidarbha, Chhattisgarh & Odisha on 04th; Andaman & Nicobar Islands on 06th & 07th; Sub-Himalayan West Bengal & Sikkim on 05th & during 07th-10th; Bihar during 08th-10th September with isolated **very heavy rainfall over West Madhya Pradesh on 04th & 05th September.**

Light to moderate rainfall at most/many places accompanied with thunderstorm & lightning likely over the region during next 7 days.

Northeast India:

Isolated heavy rainfall likely over Assam & Meghalaya, Nagaland, Manipur, Mizoram & Tripura during 04th-07th and Arunachal Pradesh on 04th & during 06th-10th September.

Light/moderate rainfall at many places accompanied with thunderstorm & lightning likely during next 7 days.

South Peninsular India:

Isolated heavy rainfall likely over Kerala & Mahe on 04th; Tamil Nadu on 08th & 09th September.

Strong surface winds (speed reaching 30-40 kmph) very likely over Coastal Andhra Pradesh & Yanam, Rayalaseema during next 5 days.

Light to moderate rainfall accompanied with thunderstorm & lightning at a few places likely over the region during next 5 days.

***Red color warning does not mean "Red Alert" Red color warning means "Take Action"**

Forecast and warning for any day is valid from 0830 hours IST of day till 0830 hours IST of next day

For more details kindly visit <https://mausam.imd.gov.in> or contact 011-2434-4599

(Service to the nation since 1875)

Main Weather Observations:

❖ **Rainfall distribution** (from 0830 hours IST of yesterday to 0830 hours IST of today): **at most places** over Andaman & Nicobar Islands, Gangetic West Bengal, Odisha, Haryana-Chandigarh-Delhi, Punjab, Himachal Pradesh, Jammu-Kashmir-Ladakh-Gilgit-Baltistan-Muzaffarabad, East Rajasthan, West Madhya Pradesh, East Madhya Pradesh, Gujarat Region, Konkan & Goa, Vidarbha, Chhattisgarh, Coastal Karnataka and Kerala & Mahe; **at many places** over Sub Himalayan West Bengal & Sikkim, Jharkhand, West Uttar Pradesh, Uttarakhand, Madhya Maharashtra, Marathwada, North Interior Karnataka and South Interior Karnataka; **at a few places** over Arunachal Pradesh, Assam & Meghalaya, Nagaland, Manipur, Mizoram & Tripura, Bihar, West Rajasthan, Coastal Andhra Pradesh & Yanam and Telangana; **at isolated places** over East Uttar Pradesh, Saurashtra & Kutch, Rayalaseema and Tamil Nadu, Puducherry & Karaikal; **Dry** over rest of the country.

❖ **Significant rainfall recorded(in cm)** (from 0830 hours IST of yesterday to 0830 hours IST of today): **West Madhya Pradesh:** Kumbhraj (dist Guna) 21; Depalpur (dist Indore) 18; Gautampura (dist Indore) 16; Raghogarh (dist Guna) 15; Bhikangaon (dist Khargone) 14; Indore (dist Indore), Hatod (dist Indore) 12 Each; Badnawar (dist Dhar), Alirajpur (dist Alirajpur), Udaipura (dist Raisen), Badnagar (dist Ujjain), Aron (dist Guna), Pithampur (dist Dhar) 11 Each; Ujjain-aws (dist Ujjain), Sanwer (dist Indore) 10 Each; Chachoda (dist Guna), Rajgarh (dist Rajgarh), Maksudangarh (dist Guna) 9 Each; Kannod (dist Dewas), Guna-aws (dist Guna), Mhow (dist Indore), Satwas (dist Dewas), Mau (dist Bhind) 8 Each; Khategaon (dist Dewas), Tonkhurd (dist Dewas), Shegaon (dist Khargone), Raisen-aws (dist Raisen), Narsingarh (dist Rajgarh), Jaora (dist Ratlam), Khachrod (dist Ujjain), Rama (dist Jhabua), Gogawan (dist Khargone), Gulana (dist Shajapur), Bankhedi (dist Narmadapuram), Raoti (dist Ratlam) 7 Each; **Odisha:** Laikera (dist Jharsuguda) 21; Sukinda (dist Jajpur) 18; Kirmira (dist Jharsuguda) 17; Kolabira (dist Jharsuguda), Danagadi (dist Jajpur) 16 Each; Chandikhola (dist Jajpur) 15; Deogarh (dist Deogarh), Lakhanpur (dist Jharsuguda) 14 Each; Daitari (dist Keonjhar) 13; Jajpur (dist Jajpur), Jajpur PTO (dist Jajpur) 12 Each; Kankadahad (dist Dhenkanal), Korei (dist Jajpur), Nh5 Gobindpur (dist Balasore), Kuchinda (dist Sambalpur), Banaigarh (dist Sundargarh), Jenapur (dist Jajpur) 11 Each; Dhamnagar (dist Bhadrak) 10; Pallahara (dist Angul), Akhuapada (dist Bhadrak), Betanati (dist Mayurbhanj), Tangarpali (dist Sundargarh), Ghasipura (dist Keonjhar), Lephripada (dist Sundargarh), Jharsuguda (dist Jharsuguda) 9 Each; Barkote (dist Deogarh), Harichandanpur (dist Keonjhar), Kaptipada (dist Mayurbhanj), Altuma (dist Dhenkanal), Chandbali (dist Bhadrak) 8 Each; Reamal (dist Deogarh), Jhorigam (dist Nawarangpur), Kamakhyannagar (dist Dhenkanal), Deogaon (dist Jharsuguda), Hatadihi (dist Keonjhar), Muruda (dist Mayurbhanj), Rasagovindapur (dist Mayurbhanj), Bargarh (dist Bargarh) 7 Each; **Chhattisgarh:** Patharia (dist Mungeli) 17; Bilha (dist Bilaspur), Bhaisma (dist Korba) 11 Each; Bilaspur (dist Bilaspur), Takhatpur (dist Bilaspur), Bodari (dist Bilaspur), Sakri (dist Bilaspur) 10 Each; Katghora (dist Korba), Gharghoda (dist Raigarh), Malkharoda (dist Sakti), Barpali (dist Korba), Adbhar (dist Sakti) 9 Each; Baloda (dist Janjgir), Lawan (dist Baloda Bazar), Darri (dist Korba), Navagarh (dist Janjgir) 8 Each; Mungeli (dist Mungeli), Korba (dist Korba), Pali (dist Korba), Patan (dist Durg), Pusaur (dist Raigarh), Lalpur Thana (dist Mungeli), Hasaud (dist Sakti), Chhal (dist Raigarh) 7 Each; **Haryana-Chandigarh-Delhi:** Barwala (dist Panchkula) 15; Morni (dist Panchkula) 12; Panchkula (dist Panchkula) 9; Panchkula AWS (dist Panchkula), Kvk Crpf Campus (dist South West Delhi) 8 Each; Saraswati Nagar (dist Yamuna Nagar), Babain REV (dist Kurukshetra) 7 Each; **Jammu-Kashmir-Ladakh-Gilgit-Baltistan-Muzaffarabad:** Bakore ARG (dist Jammu), Reasi ARG (dist Reasi), Katra (dist Reasi) 12 Each; Reasi Kvk AWS (dist Reasi) 11; **West Uttar Pradesh:** Agra (CWC) (dist Agra) 12; Mavi Fmo (dist Shamli) 9; Hasanpur (dist Amroha) 7; **East Rajasthan:** Sikrai (dist Dausa) 10; Kherwara (dist Udaipur) 8; Hindoli (dist Bundi) 7; **Gujarat Region:** Nandod (dist Narmada) 10; Umerpada (dist Surat) 9; Rajpipala (dist Narmada), Jhagadia (dist Bharuch) 8 Each; Wanakbori (dist Mahisagar), Balasinor (dist Mahisagar), Garudeshwar (dist Narmada) 7 Each; **Kerala & Mahe:** Taliparamba (dist Cannur) 8; Pattermbi (dist Palakkad), Kozhikode (dist Kozhikode) 7 Each; **East Madhya Pradesh:** Nagode (dist Satna), Sleemanabad (dist Katni) 8 Each; Devendranagar (dist Panna), Unchehra (dist Satna) 7 Each; **Arunachal Pradesh:** Jung ARG (dist Tawang) 7; **Himachal Pradesh:** Kasauli (dist Solan), Dharampur (dist Solan), Karsog (dist Mandi) 7 Each.

❖ **Heavy Rainfall observed** (from 0830 hours IST of yesterday to 0830 hours IST of today): **Extremely heavy rain** at isolated places over Odisha and West Madhya Pradesh. **Heavy to very heavy rain** at isolated places over Odisha, West Uttar Pradesh, Haryana-Chandigarh-Delhi, Jammu-Kashmir-Ladakh-Gilgit-Baltistan-Muzaffarabad, West Madhya Pradesh and Chhattisgarh. **Heavy rain** at isolated places over Arunachal Pradesh, Himachal Pradesh, East Rajasthan, East Madhya Pradesh, Gujarat Region, South Interior Karnataka and Kerala & Mahe.

❖ **Minimum Temperature Departures (as on 04-09-2025):** **markedly above normal(> 5.1°C)** at isolated places over Assam & Meghalaya, Sub Himalayan West Bengal & Sikkim, East Uttar Pradesh, West Uttar Pradesh, Himachal Pradesh and West Madhya Pradesh. **appreciably above normal(3.1°C to 5.0°C)** at most places over East Madhya Pradesh; at few places over Saurashtra & Kutch; at isolated places over Bihar and West Rajasthan. **above**

*Red color warning does not mean "Red Alert" Red color warning means "Take Action"

Forecast and warning for any day is valid from 0830 hours IST of day till 0830 hours IST of next day

For more details kindly visit <https://mausam.imd.gov.in> or contact 011-2434-4599

(Service to the nation since 1875)

normal(1.6°C to 3.0°C) at few places over Andaman & Nicobar Islands and Lakshadweep; at isolated places over Nagaland, Manipur, Mizoram & Tripura, Odisha, Uttarakhand, Haryana-Chandigarh-Delhi, Jammu-Kashmir-Ladakh-Gilgit-Baltistan-Muzaffarabad, Gujarat Region, Konkan & Goa, Madhya Maharashtra, Coastal Andhra Pradesh & Yanam, Tamil Nadu, Puducherry & Karaikal and North Interior Karnataka. **near normal(-1.5°C to 1.5°C)** at many places over Chhattisgarh and Kerala & Mahe; at most places over Arunachal Pradesh, Gangetic West Bengal, Jharkhand, Punjab, East Rajasthan, Marathwada, Vidarbha, Telangana, Rayalaseema, Coastal Karnataka and South Interior Karnataka. **The lowest minimum temperature** of 17.0°C is reported at KHANDWA (MADHYA PRADESH) over the Plains of India.

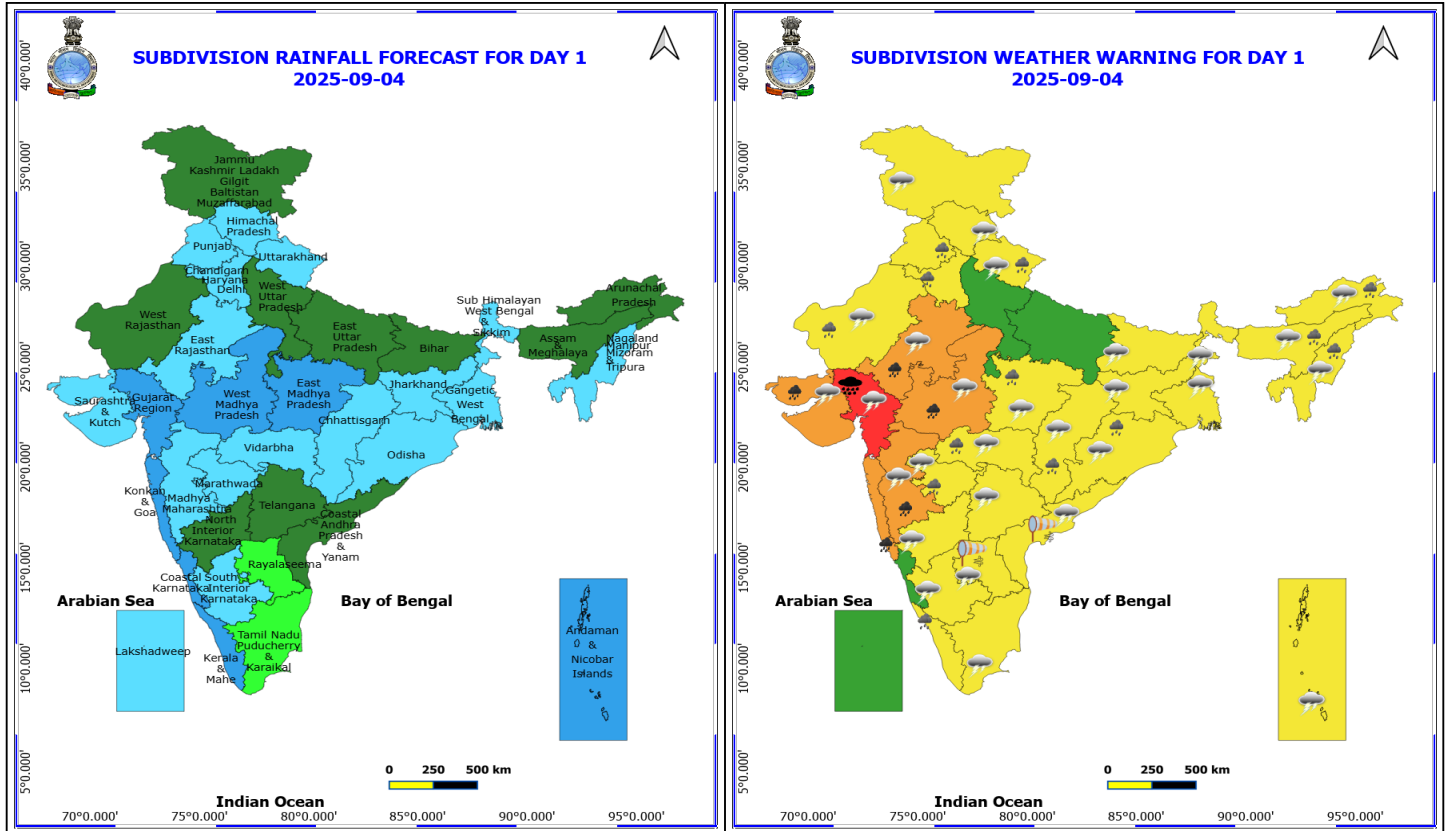
❖ **Maximum Temperature Departures (as on 03-09-2025): markedly above normal(> 5.1°C)** at few places over Arunachal Pradesh and Assam & Meghalaya; at isolated places over Odisha and Tamil Nadu, Puducherry & Karaikal. **appreciably above normal(3.1°C to 5.0°C)** at many places over Sub Himalayan West Bengal & Sikkim; at isolated places over Bihar and Coastal Andhra Pradesh & Yanam. **above normal(1.6°C to 3.0°C)** at many places over Nagaland, Manipur, Mizoram & Tripura; at isolated places over East Uttar Pradesh, East Madhya Pradesh, Saurashtra & Kutch, Madhya Maharashtra and Kerala & Mahe. **near normal(-1.5°C to 1.5°C)** at many places over Gangetic West Bengal, Uttarakhand and Marathwada; at most places over Andaman & Nicobar Islands, West Uttar Pradesh, Gujarat Region, Konkan & Goa, Chhattisgarh, North Interior Karnataka and Lakshadweep; at few places over Jharkhand, West Rajasthan, Vidarbha, Telangana, Rayalaseema, Coastal Karnataka and South Interior Karnataka; at isolated places over Haryana-Chandigarh-Delhi, East Rajasthan and West Madhya Pradesh. **The highest maximum temperature** of 39.4°C is reported at MADURAI (A) (TAMIL NADU).

Meteorological Analysis (Based on 0830 hours IST)

- The **low pressure** area over north Chhattisgarh & neighbourhood moved slightly west-northwestwards & lay over north Chhattisgarh & adjoining East Madhya Pradesh at 0830 hrs IST of today, the 04th September 2025. The associated cyclonic circulation extended upto 5.8 km above mean sea level tilting southwestwards with height. It is likely to move west-northwestwards across East Madhya Pradesh during next 24 hours.
- The **upper air cyclonic circulation** over southwest Madhya Pradesh & neighbourhood extending upto 5.8 km above mean sea level persists.
- The **monsoon trough** at mean sea level now passes through Jaisalmer, Kota, Narmadapuram, Seoni, Durg, centre of **low-pressure** area over north Chhattisgarh and adjoining East Madhya Pradesh, Chandbali and thence east-southeastwards to northwest Bay of Bengal. It extends upto 1.5 km above mean sea level passing through the above cyclonic circulations.
- A **trough** runs from northeast Arabian Sea to northwest Bay of Bengal across Saurashtra, south Gujarat, the **upper air cyclonic circulation** over southwest Madhya Pradesh & neighbourhood, cyclonic circulation associated with **low pressure area** over north Chhattisgarh & adjoining East Madhya Pradesh and Odisha between 3.1 & 5.8 km above mean sea level.
- The **Western Disturbance** as a trough in middle & upper tropospheric westerlies with its axis at 5.8 km above mean sea level roughly along Long. 74°E to the north of Lat. 28°N persists.
- An **upper air cyclonic circulation** lies over northeast Assam & neighbourhood and extends upto 1.5 km above mean sea level.

Weather Outlook for subsequent 3 days

- Isolated to scattered rainfall likely over the entire country.



4 September (Day 1)

- ❖ **Heavy to Very Heavy Rainfall with isolated Extremely Heavy Rainfall** very likely at isolated places over Gujarat Region.
- ❖ **Heavy to Very Heavy Rainfall** very likely at isolated places over East Rajasthan, Konkan & Goa, Madhya Maharashtra, Saurashtra & Kutch and West Madhya Pradesh.
- ❖ **Heavy Rainfall** very likely at isolated places over Arunachal Pradesh, Assam & Meghalaya, Chhattisgarh, East Madhya Pradesh, Haryana, Chandigarh & Delhi, Kerala & Mahe, Marathwada, Nagaland, Manipur, Mizoram and Tripura, Odisha, Punjab, Uttarakhand, Vidarbha and West Rajasthan.
- ❖ **Thunderstorm accompanied with lightning & gusty winds(40-50kmph)** very likely at isolated places over North Interior Karnataka.
- ❖ **Thunderstorm accompanied with lightning & gusty winds(30-40kmph)** very likely at isolated places over Bihar, Himachal Pradesh, Jammu-Kashmir-Ladakh-Gilgit-Baltistan-Muzaffarabad, Rayalaseema, South Interior Karnataka and Telangana.
- ❖ **Thunderstorm accompanied with Lightning** very likely at isolated places over Andaman & Nicobar Islands, Arunachal Pradesh, Assam & Meghalaya, Chhattisgarh, Coastal Andhra Pradesh, Gujarat State, Jharkhand, Madhya Pradesh, Maharashtra, Nagaland, Manipur, Mizoram and Tripura, Odisha, Rajasthan, Tamil Nadu Puducherry & Karaikal, Uttarakhand and West Bengal & Sikkim.
- ❖ **Strong Surface Winds** very likely at isolated places over Andhra Pradesh.

Squally wind with speed reaching 45 kmph to 55 kmph gusting to 65 kmph is likely to prevail along and off Somalia, Oman coasts, most parts of westcentral Arabian sea, adjoining & many parts of southwest Arabian Sea.

***Red color warning does not mean "Red Alert" Red color warning means "Take Action"**

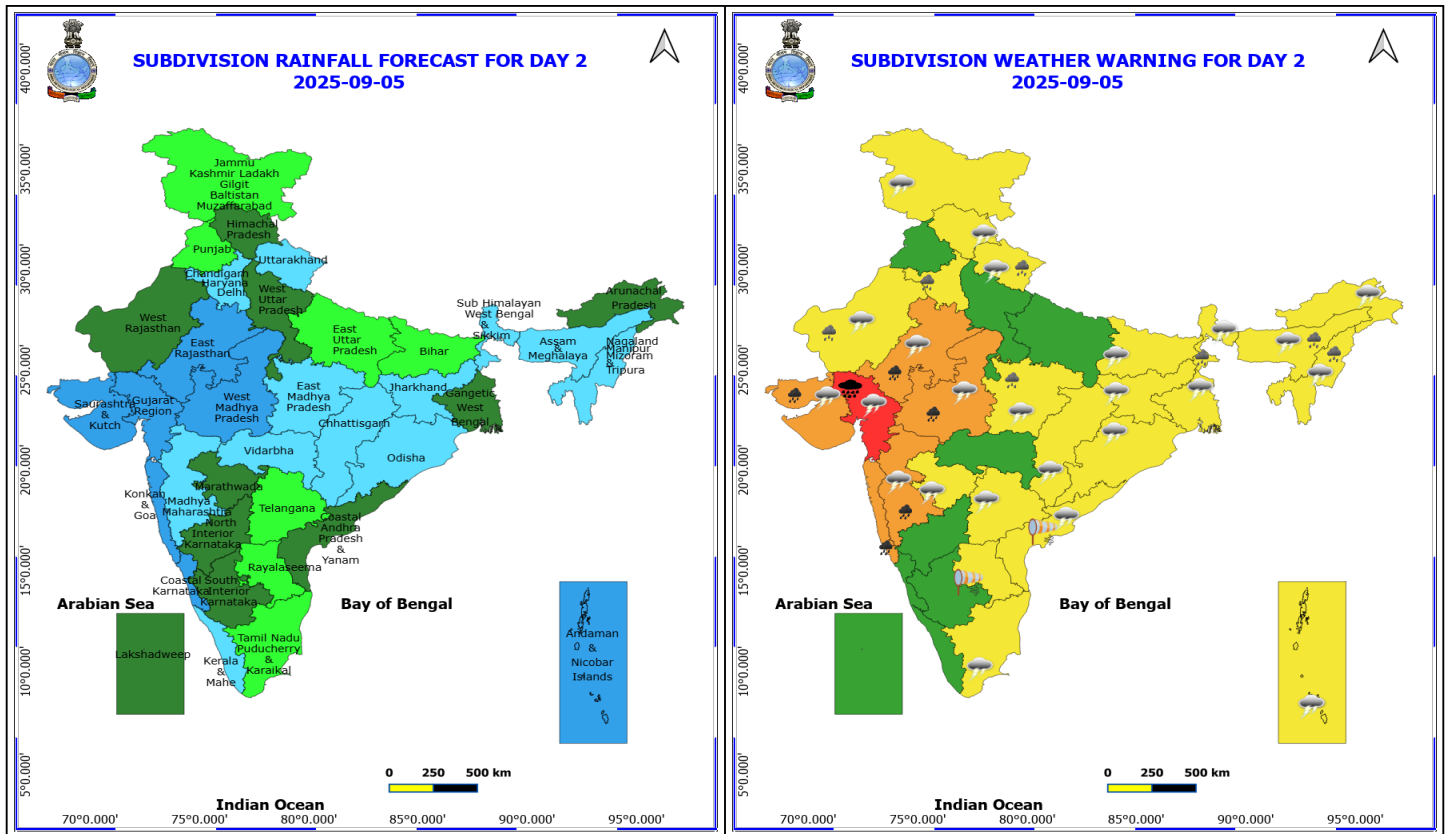
Forecast and warning for any day is valid from 0830 hours IST of day till 0830 hours IST of next day

For more details kindly visit <https://mausam.imd.gov.in> or contact 011-2434-4599

(Service to the nation since 1875)



Squally weather with wind speed reaching 40 - 50 kmph gusting to 60 kmph likely to prevail along and off south Gujarat, Konkan & Goa coasts, and adjoining some parts of eastcentral & northeast Arabian Sea, southwest Bay of Bengal & adjoining areas of southeast Bay of Bengal, Sri Lanka coast, over Gulf of Mannar.



5 September (Day 2)

- ❖ **Heavy to Very Heavy Rainfall with isolated Extremely Heavy Rainfall** very likely at isolated places over Gujarat Region.
- ❖ **Heavy to Very Heavy Rainfall** very likely at isolated places over East Rajasthan, Konkan & Goa, Madhya Maharashtra, Saurashtra & Kutch and West Madhya Pradesh.
- ❖ **Heavy Rainfall** very likely at isolated places over Assam & Meghalaya, East Madhya Pradesh, Haryana, Chandigarh & Delhi, Nagaland, Manipur, Mizoram and Tripura, Sub Himalayan West Bengal & Sikkim, Uttarakhand and West Rajasthan.
- ❖ **Thunderstorm accompanied with lightning & gusty winds(30-40kmph)** very likely at isolated places over Bihar, Himachal Pradesh, Jammu-Kashmir-Ladakh-Gilgit-Baltistan-Muzaffarabad and Telangana.
- ❖ **Thunderstorm accompanied with Lightning** very likely at isolated places over Andaman & Nicobar Islands, Arunachal Pradesh, Assam & Meghalaya, Chhattisgarh, Coastal Andhra Pradesh, Gujarat State, Jharkhand, Madhya Maharashtra, Madhya Pradesh, Marathwada, Nagaland, Manipur, Mizoram and Tripura, Odisha, Rajasthan, Tamil Nadu Puducherry & Karaikal, Uttarakhand and West Bengal & Sikkim.
- ❖ **Strong Surface Winds** very likely at isolated places over Andhra Pradesh.

Squally wind with speed reaching 45 kmph to 55 kmph gusting to 65 kmph is likely to prevail along and off Somalia coasts, some parts of westcentral & southwest Arabian Sea.

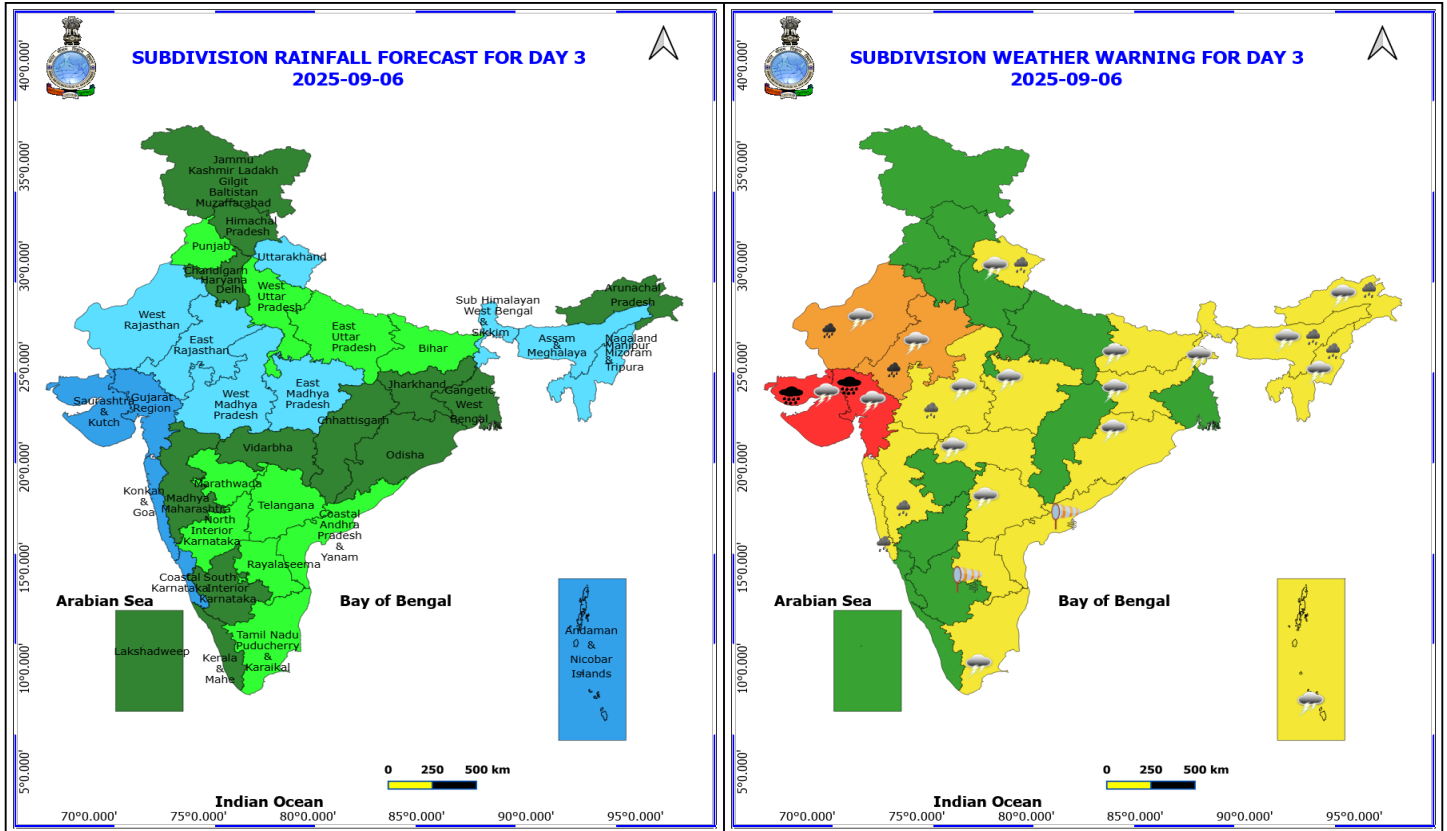
Squally weather with wind speed reaching 40 - 50 kmph gusting to 60 kmph likely to prevail along and off Gujarat, off north Maharashtra coasts and adjoining some parts of eastcentral & northeast Arabian Sea, off Tamil Nadu coasts, over most parts of southwest Bay of Bengal & adjoining areas, Sri Lanka coast, over Gulf of Mannar.

***Red color warning does not mean "Red Alert" Red color warning means "Take Action"**

Forecast and warning for any day is valid from 0830 hours IST of day till 0830 hours IST of next day

For more details kindly visit <https://mausam.imd.gov.in> or contact 011-2434-4599

(Service to the nation since 1875)



6 September (Day 3)

- ❖ **Heavy to Very Heavy Rainfall with isolated Extremely Heavy Rainfall** very likely at isolated places over Gujarat State.
- ❖ **Heavy to Very Heavy Rainfall** very likely at isolated places over Rajasthan.
- ❖ **Heavy Rainfall** very likely at isolated places over Arunachal Pradesh, Assam & Meghalaya, Konkan & Goa, Madhya Maharashtra, Nagaland, Manipur, Mizoram and Tripura, Uttarakhand and West Madhya Pradesh.
- ❖ **Thunderstorm accompanied with lightning & gusty winds(30-40kmph)** very likely at isolated places over Bihar and Telangana.
- ❖ **Thunderstorm accompanied with Lightning** very likely at isolated places over Andaman & Nicobar Islands, Arunachal Pradesh, Assam & Meghalaya, Gujarat State, Jharkhand, Madhya Pradesh, Nagaland, Manipur, Mizoram and Tripura, Odisha, Rajasthan, Sub Himalayan West Bengal & Sikkim, Tamil Nadu Puducherry & Karaikal, Uttarakhand and Vidarbha.
- ❖ **Strong Surface Winds** very likely at isolated places over Andhra Pradesh.

Squally wind with speed reaching 45 kmph to 55 kmph gusting to 65 kmph is likely to prevail along and off Somalia coasts, some parts of southwest & adjoining westcentral Arabian Sea.

Squally weather with wind speed reaching 40 - 50 kmph gusting to 60 kmph likely to prevail along and off Gujarat, off north Maharashtra coasts, northeast Arabian Sea adjoining some parts of eastcentral Arabian Sea; over Gulf of Mannar and some parts of south Bay of Bengal.

Squally weather with wind speed reaching 45 - 55 kmph gusting to 65 kmph likely to prevail along and off south

***Red color warning does not mean "Red Alert" Red color warning means "Take Action"**

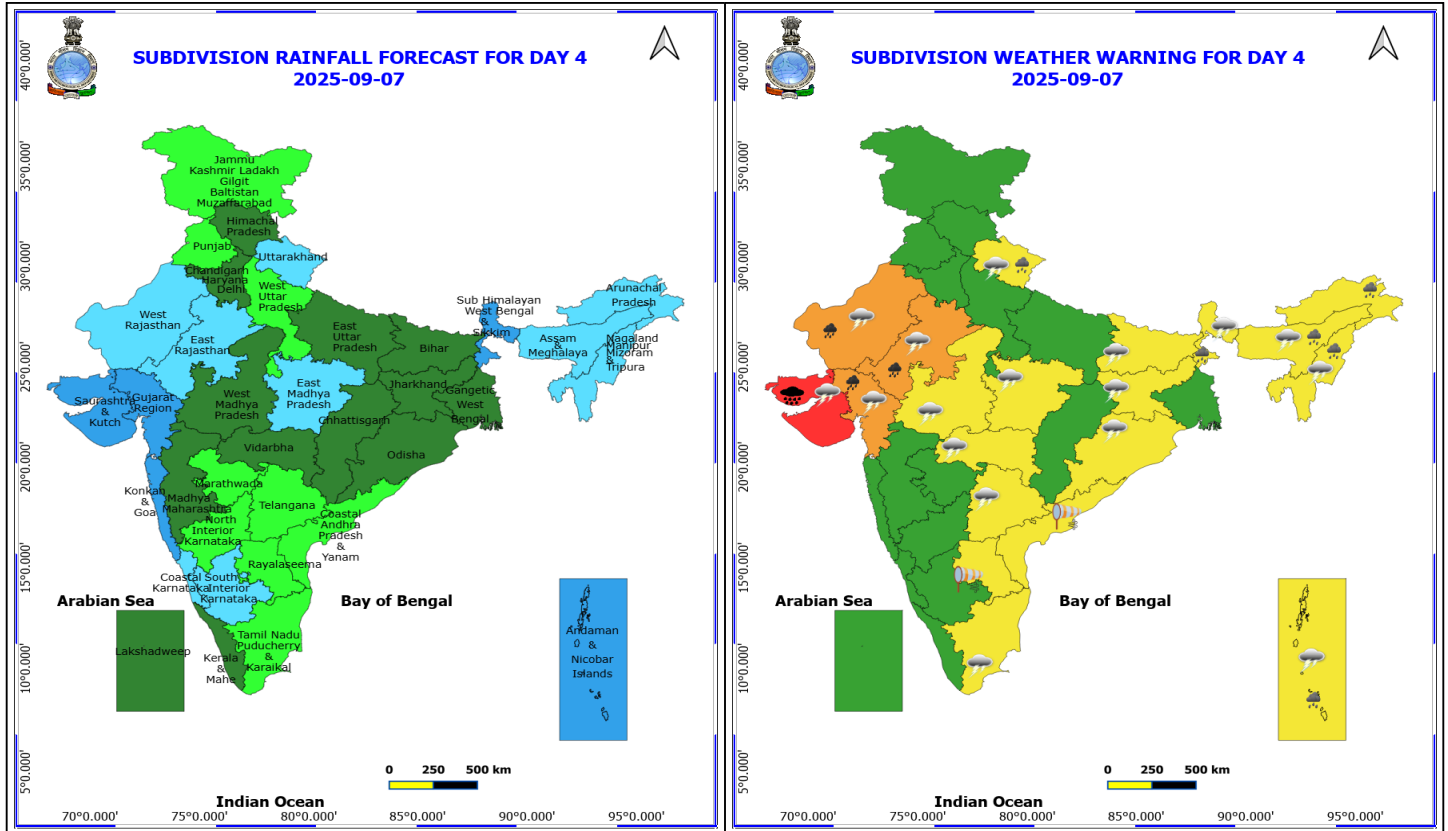
Forecast and warning for any day is valid from 0830 hours IST of day till 0830 hours IST of next day

For more details kindly visit <https://mausam.imd.gov.in> or contact 011-2434-4599

(Service to the nation since 1875)



Gujarat coasts and adjoining sea areas.



7 September (Day 4)

- ❖ **Heavy to Very Heavy Rainfall with isolated Extremely Heavy Rainfall** likely at isolated places over Saurashtra & Kutch.
- ❖ **Heavy to Very Heavy Rainfall** likely at isolated places over Gujarat Region and Rajasthan.
- ❖ **Heavy Rainfall** likely at isolated places over Andaman & Nicobar Islands, Arunachal Pradesh, Assam & Meghalaya, Nagaland, Manipur, Mizoram and Tripura, Sub Himalayan West Bengal & Sikkim and Uttarakhand.
- ❖ **Thunderstorm accompanied with lightning & gusty winds(30-40kmph)** likely at isolated places over Bihar, Jharkhand, Odisha and Telangana.
- ❖ **Thunderstorm accompanied with Lightning** likely at isolated places over Andaman & Nicobar Islands, Assam & Meghalaya, Gujarat State, Madhya Pradesh, Nagaland, Manipur, Mizoram and Tripura, Rajasthan, Sub Himalayan West Bengal & Sikkim, Tamil Nadu Puducherry & Karaikal, Uttarakhand and Vidarbha.
- ❖ **Strong Surface Winds** likely at isolated places over Andhra Pradesh.

Squally wind with speed reaching 45 kmph to 55 kmph gusting to 65 kmph is likely to prevail along and off Somalia coasts, some parts of southwest & adjoining westcentral Arabian Sea.

Squally weather with wind speed reaching 40 - 50 kmph gusting to 60 kmph likely to prevail along and off Gujarat off north Maharashtra coasts; over most parts of north & some parts of central Arabian sea, few parts of southwest Bay of Bengal; over few parts of Comorin area.

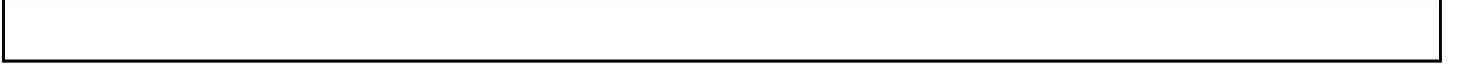
Squally weather with wind speed reaching 45 - 55 kmph gusting to 65 kmph likely to prevail along and off north Gujarat coasts and adjoining.

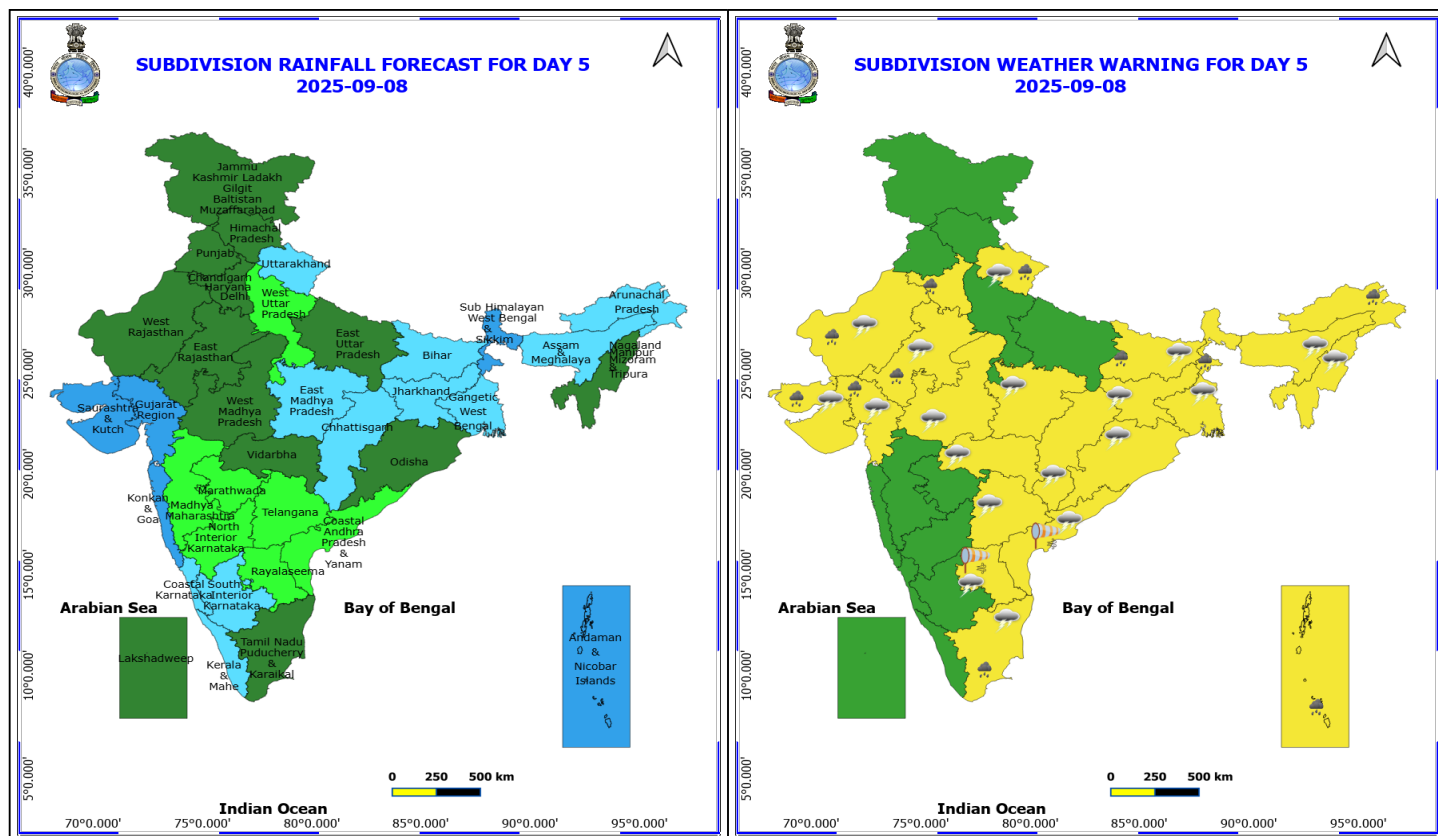
***Red color warning does not mean "Red Alert" Red color warning means "Take Action"**

Forecast and warning for any day is valid from 0830 hours IST of day till 0830 hours IST of next day

For more details kindly visit <https://mausam.imd.gov.in> or contact 011-2434-4599

(Service to the nation since 1875)





8 September (Day 5)

❖ **Heavy Rainfall** likely at isolated places over Andaman & Nicobar Islands, Arunachal Pradesh, Bihar, Gujarat State, Haryana, Chandigarh & Delhi, Rajasthan, Sub Himalayan West Bengal & Sikkim, Tamil Nadu Puducherry & Karaikal and Uttarakhand.

❖ **Thunderstorm accompanied with lightning & gusty winds(30-40kmph)** likely at isolated places over Bihar, Jharkhand, Odisha, Rayalaseema and Telangana.

❖ **Thunderstorm accompanied with Lightning** likely at isolated places over Assam & Meghalaya, Chhattisgarh, Coastal Andhra Pradesh, Gangetic West Bengal, Gujarat State, Madhya Pradesh, Nagaland, Manipur, Mizoram and Tripura, Rajasthan, Tamil Nadu Puducherry & Karaikal, Uttarakhand and Vidarbha.

❖ **Strong Surface Winds** likely at isolated places over Andhra Pradesh.

Squally wind with speed reaching 45 kmph to 55 kmph gusting to 65 kmph is likely to prevail along and off Somalia and Oman coasts, many parts of southwest & westcentral Arabian Sea.

Squally weather with wind speed reaching 40 - 50 kmph gusting to 60 kmph likely to prevail along and off Gujarat, off north Maharashtra coasts, northeast Arabian Sea adjoining some parts of eastcentral & northwest Arabian Sea; over Comorin Area and few parts of southwest Bay of Bengal.

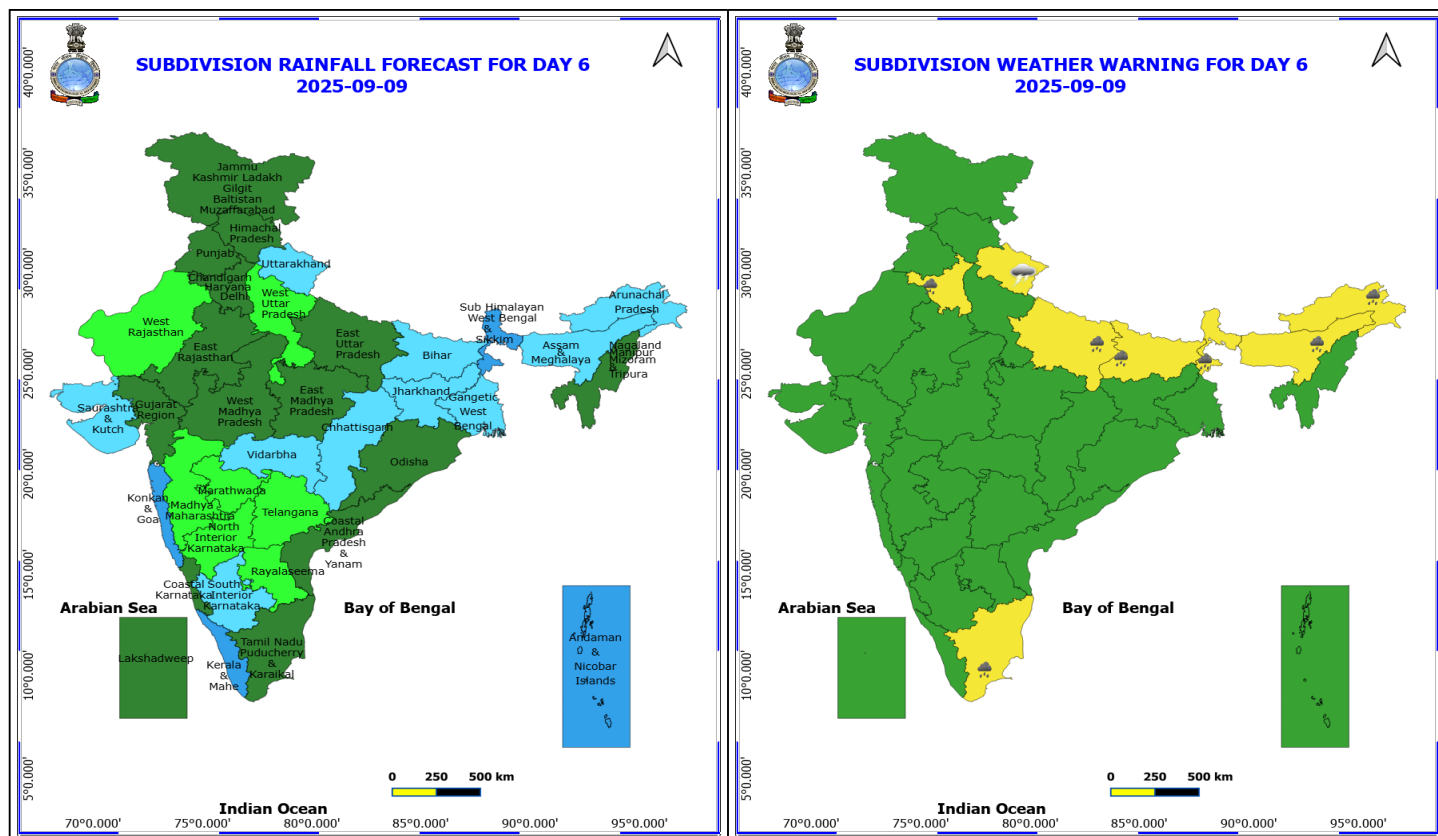
Squally weather with wind speed reaching 45 - 55 kmph gusting to 65 kmph likely to prevail along and off Gujarat coasts and adjoining sea Area.

***Red color warning does not mean "Red Alert" Red color warning means "Take Action"**

Forecast and warning for any day is valid from 0830 hours IST of day till 0830 hours IST of next day

For more details kindly visit <https://mausam.imd.gov.in> or contact 011-2434-4599

(Service to the nation since 1875)



9 September (Day 6)

❖ **Heavy Rainfall** likely at isolated places over Arunachal Pradesh, Assam & Meghalaya, Bihar, East Uttar Pradesh, Haryana, Chandigarh & Delhi, Sub Himalayan West Bengal & Sikkim and Tamil Nadu Puducherry & Karaikal.

❖ **Thunderstorm accompanied with Lightning** likely at isolated places over Uttarakhand.

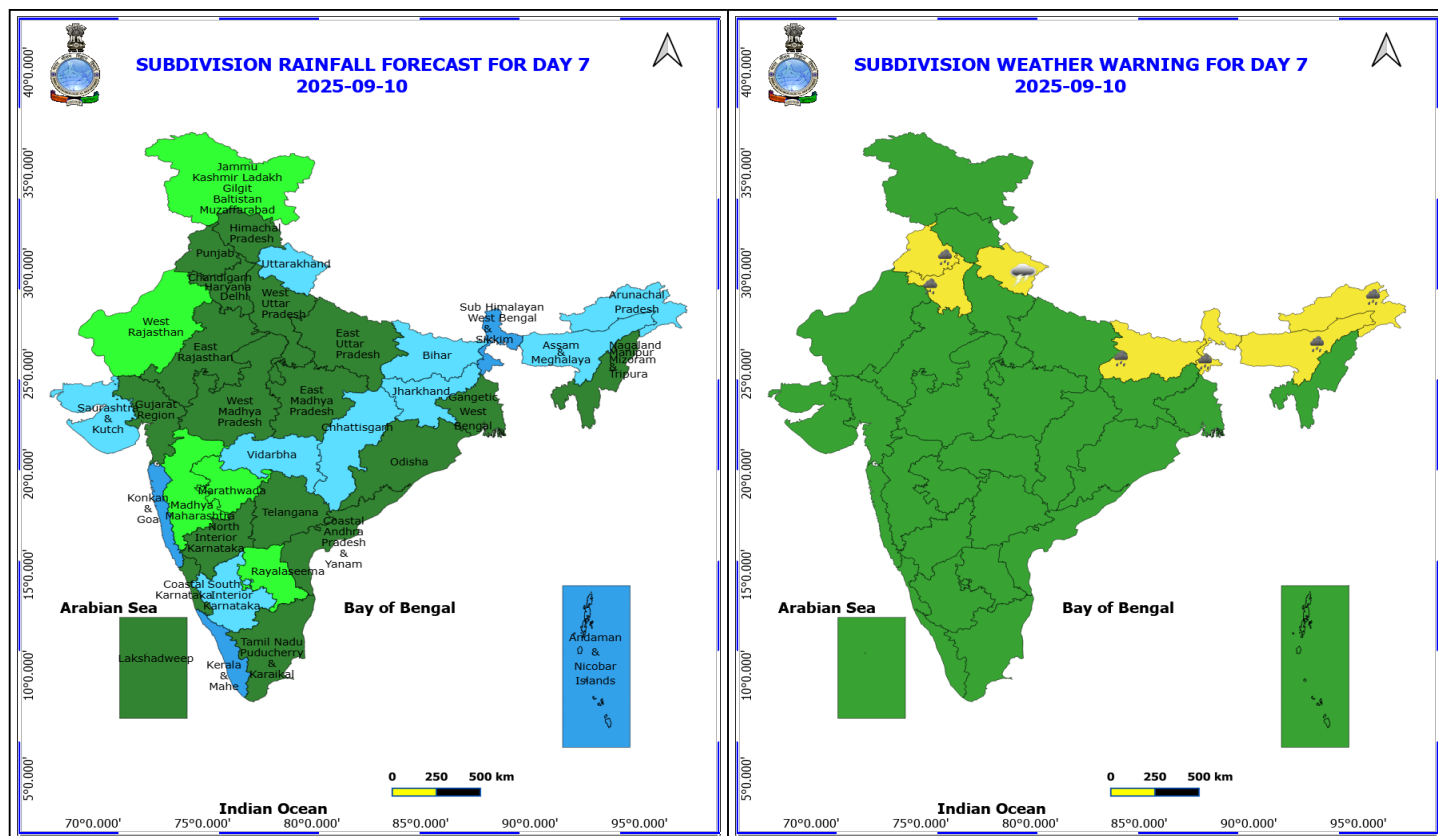
No Fishermen Warning

*Red color warning does not mean "Red Alert" Red color warning means "Take Action"

Forecast and warning for any day is valid from 0830 hours IST of day till 0830 hours IST of next day

For more details kindly visit <https://mausam.imd.gov.in> or contact 011-2434-4599

(Service to the nation since 1875)



10 September (Day 7)

❖ **Heavy Rainfall** likely at isolated places over Arunachal Pradesh, Assam & Meghalaya, Bihar, Haryana, Chandigarh & Delhi, Punjab and Sub Himalayan West Bengal & Sikkim.

❖ **Thunderstorm accompanied with Lightning** likely at isolated places over Uttarakhand.

No Fishermen Warning

*Red color warning does not mean "Red Alert" Red color warning means "Take Action"

Forecast and warning for any day is valid from 0830 hours IST of day till 0830 hours IST of next day

For more details kindly visit <https://mausam.imd.gov.in> or contact 011-2434-4599

(Service to the nation since 1875)

Flash Flood Warnings

24 hours Outlook for the Flash Flood Risk (FFR) till 1130 IST of 05-09-2025 :

Low to Moderate flash flood risk likely over few watersheds & neighbourhoods of following Met Sub-divisions during next 24 hours.

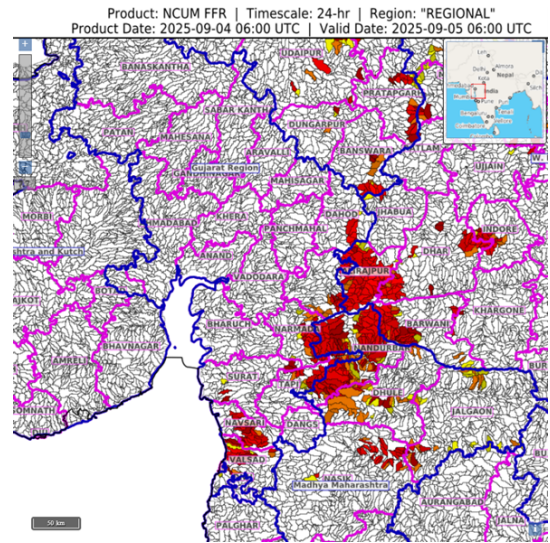
Gujarat Region – Chhota Udaipur, Narmada, Surat, Tapi, Navsari and Valsad districts.

West Madhya Pradesh- Dhar, Alirajpur, Bharwani and Indore districts

Madhya Maharashtra –Nandurbar, Dhule, Nasik and Jalgaon districts

East Rajasthan – Pratapgarh, Dungarpur and Banswara districts

Surface runoff/ Inundation may occur at some fully saturated soils & low-lying areas over Area of Concern (AoC) as shown in map due to expected rainfall occurrence in next 24 hours.



*Red color warning does not mean "Red Alert" Red color warning means "Take Action"

Forecast and warning for any day is valid from 0830 hours IST of day till 0830 hours IST of next day

For more details kindly visit <https://mausam.imd.gov.in> or contact 011-2434-4599

(Service to the nation since 1875)



Table-1

7 Days Rainfall Forecast

| S.No. | Subdivision | 4- Sep | 5- Sep | 6- Sep | 7- Sep | 8- Sep | 9- Sep | 10- Sep |
|-------|------------------------------|--------|--------|--------|--------|--------|--------|---------|
| | | Day 1 | Day 2 | Day 3 | Day 4 | Day 5 | Day 6 | Day 7 |
| 1 | ANDAMAN & NICOBAR ISLANDS | WS | WS | WS | WS | WS | WS | WS |
| 2 | ARUNACHAL PRADESH | SCT | SCT | SCT | FWS | FWS | FWS | FWS |
| 3 | ASSAM & MEHGHALAYA | SCT | FWS | FWS | FWS | FWS | FWS | FWS |
| 4 | N. M. M. & T. | FWS | FWS | FWS | FWS | SCT | SCT | SCT |
| 5 | S.H. WEST BENGAL & SIKKIM | FWS | FWS | FWS | WS | WS | WS | WS |
| 6 | GANGETIC WEST BENGAL | FWS | SCT | SCT | SCT | FWS | FWS | SCT |
| 7 | ODISHA | FWS | FWS | SCT | SCT | SCT | SCT | SCT |
| 8 | JHARKHAND | FWS | FWS | SCT | SCT | FWS | FWS | FWS |
| 9 | BIHAR | SCT | ISOL | ISOL | SCT | FWS | FWS | FWS |
| 10 | EAST UTTAR PRADESH | SCT | ISOL | ISOL | SCT | SCT | SCT | SCT |
| 11 | WEST UTTAR PRADESH | SCT | SCT | ISOL | ISOL | ISOL | ISOL | SCT |
| 12 | UTTARAKHAND | FWS | FWS | FWS | FWS | FWS | FWS | FWS |
| 13 | HARYANA, CHD & DELHI | FWS | FWS | SCT | SCT | SCT | SCT | SCT |
| 14 | PUNJAB | FWS | ISOL | ISOL | ISOL | SCT | SCT | SCT |
| 15 | HIMACHAL PRADESH | FWS | SCT | SCT | SCT | SCT | SCT | SCT |
| 16 | JAMMU AND KASHMIR AND LADAKH | SCT | ISOL | SCT | ISOL | SCT | SCT | ISOL |
| 17 | WEST RAJASTHAN | SCT | SCT | FWS | FWS | SCT | ISOL | ISOL |
| 18 | EAST RAJASTHAN | FWS | WS | FWS | FWS | SCT | SCT | SCT |
| 19 | WEST MADHYA PRADESH | WS | WS | FWS | SCT | SCT | SCT | SCT |
| 20 | EAST MADHYA PRADESH | WS | FWS | FWS | FWS | FWS | SCT | SCT |
| 21 | GUJRAT REGION | WS | WS | WS | WS | WS | SCT | SCT |
| 22 | SAURASHTRA & KUTCH | FWS | WS | WS | WS | WS | FWS | FWS |
| 23 | KONKAN & GOA | WS | WS | WS | WS | WS | WS | WS |
| 24 | MADHYA MAHARASHTRA | FWS | FWS | SCT | SCT | ISOL | ISOL | ISOL |
| 25 | MARATHWADA | FWS | SCT | ISOL | ISOL | ISOL | ISOL | ISOL |
| 26 | VIDARBHA | FWS | FWS | SCT | SCT | SCT | FWS | FWS |
| 27 | CHATTISGARH | FWS | FWS | SCT | SCT | FWS | FWS | FWS |
| 28 | COASTAL ANDHRA PRADESH | SCT | SCT | ISOL | ISOL | ISOL | SCT | SCT |
| 29 | TELANGANA | SCT | ISOL | ISOL | ISOL | ISOL | ISOL | SCT |
| 30 | RAYALASEEMA | ISOL | ISOL | ISOL | ISOL | ISOL | ISOL | ISOL |
| 31 | TAMILNADU & PUDUCHERRY | ISOL | ISOL | ISOL | ISOL | SCT | SCT | SCT |
| 32 | COSTAL KARNATAKA | WS | WS | WS | FWS | FWS | SCT | SCT |
| 33 | NORTH INTERIOR KARNATAKA | SCT | SCT | ISOL | ISOL | ISOL | ISOL | SCT |
| 34 | SOUTH INTERIOR KARNATAKA | FWS | SCT | SCT | FWS | FWS | FWS | FWS |
| 35 | KERALA | WS | FWS | SCT | SCT | FWS | WS | WS |
| 36 | LAKSHDWEEP | FWS | SCT | SCT | SCT | SCT | SCT | SCT |

| Legend | Category | %Stations |
|--------|-------------------------------|-----------|
| WS | Widespread/Most Places | 76-100 |
| FWS | Fairly Widespread/Many Places | 51-75 |
| SCT | Scattered/ A Few Places | 26-50 |
| ISOL | Isolated Places | 1-25 |
| DRY | No Rain | 0 |

*Red color warning does not mean "Red Alert" Red color warning means "Take Action"

Forecast and warning for any day is valid from 0830 hours IST of day till 0830 hours IST of next day

For more details kindly visit <https://mausam.imd.gov.in> or contact 011-2434-4599

(Service to the nation since 1875)

Fig. 1: Maximum Temperatures Dated 2025-09-04

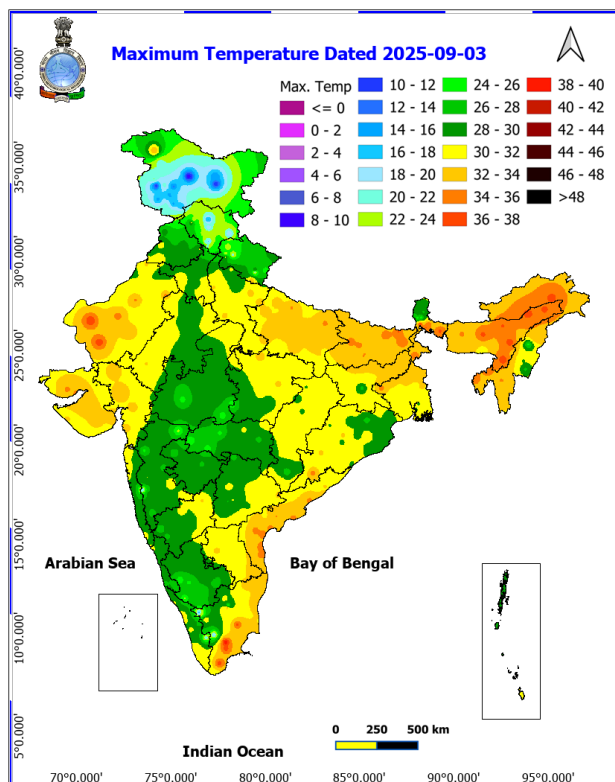


Fig. 2: Departure of Maximum Temp. Dated 2025-09-04

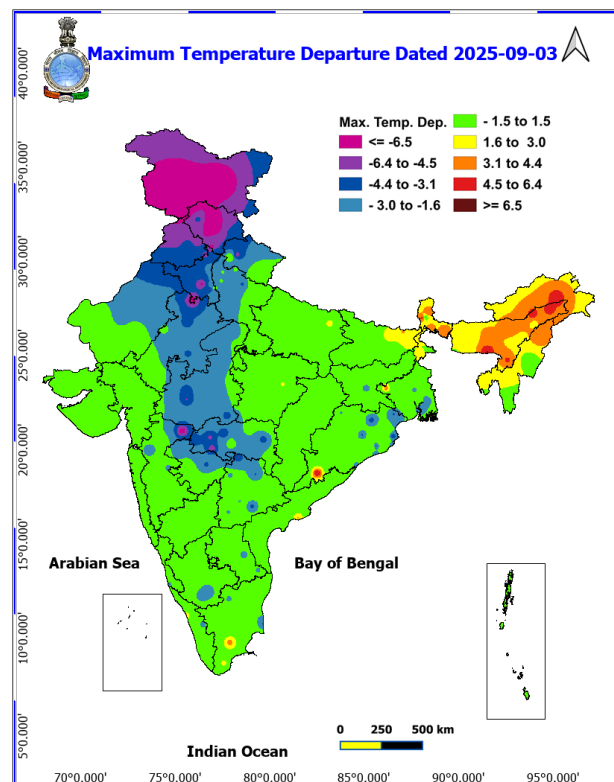


Fig. 3: Minimum Temperatures Dated 2025-09-04

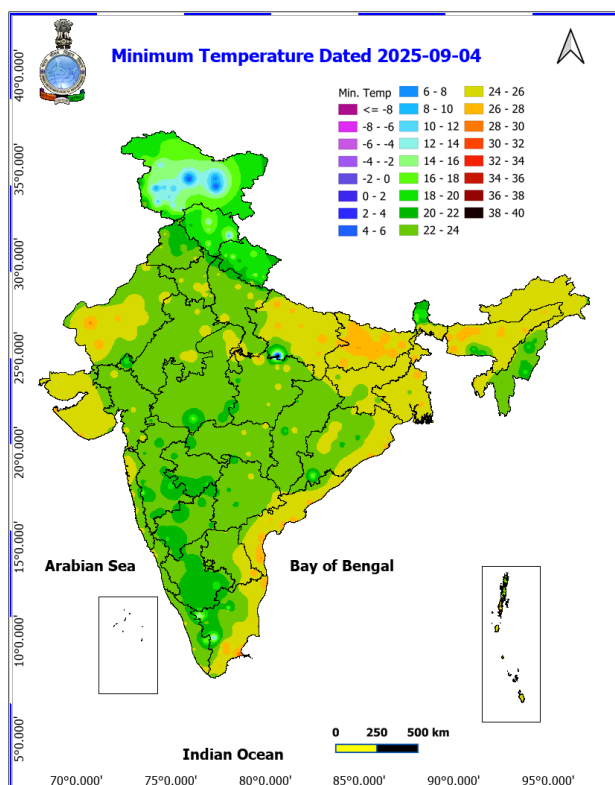
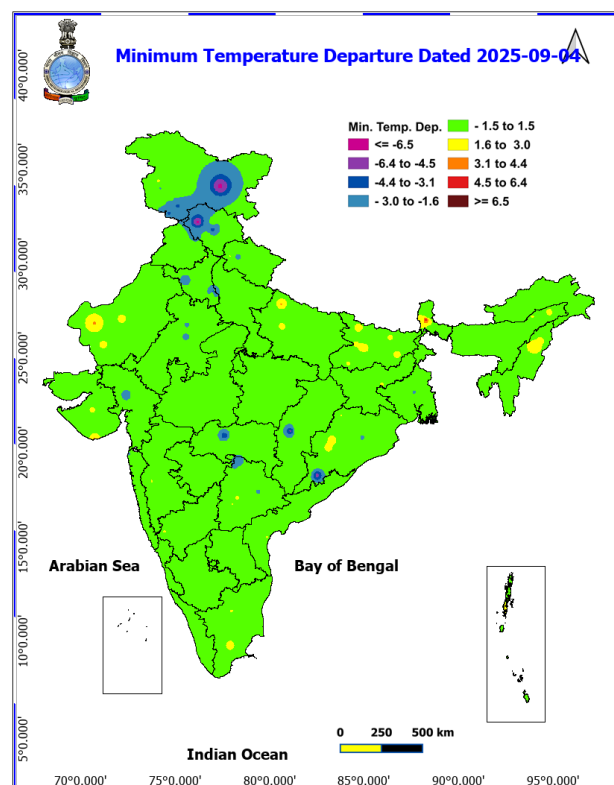
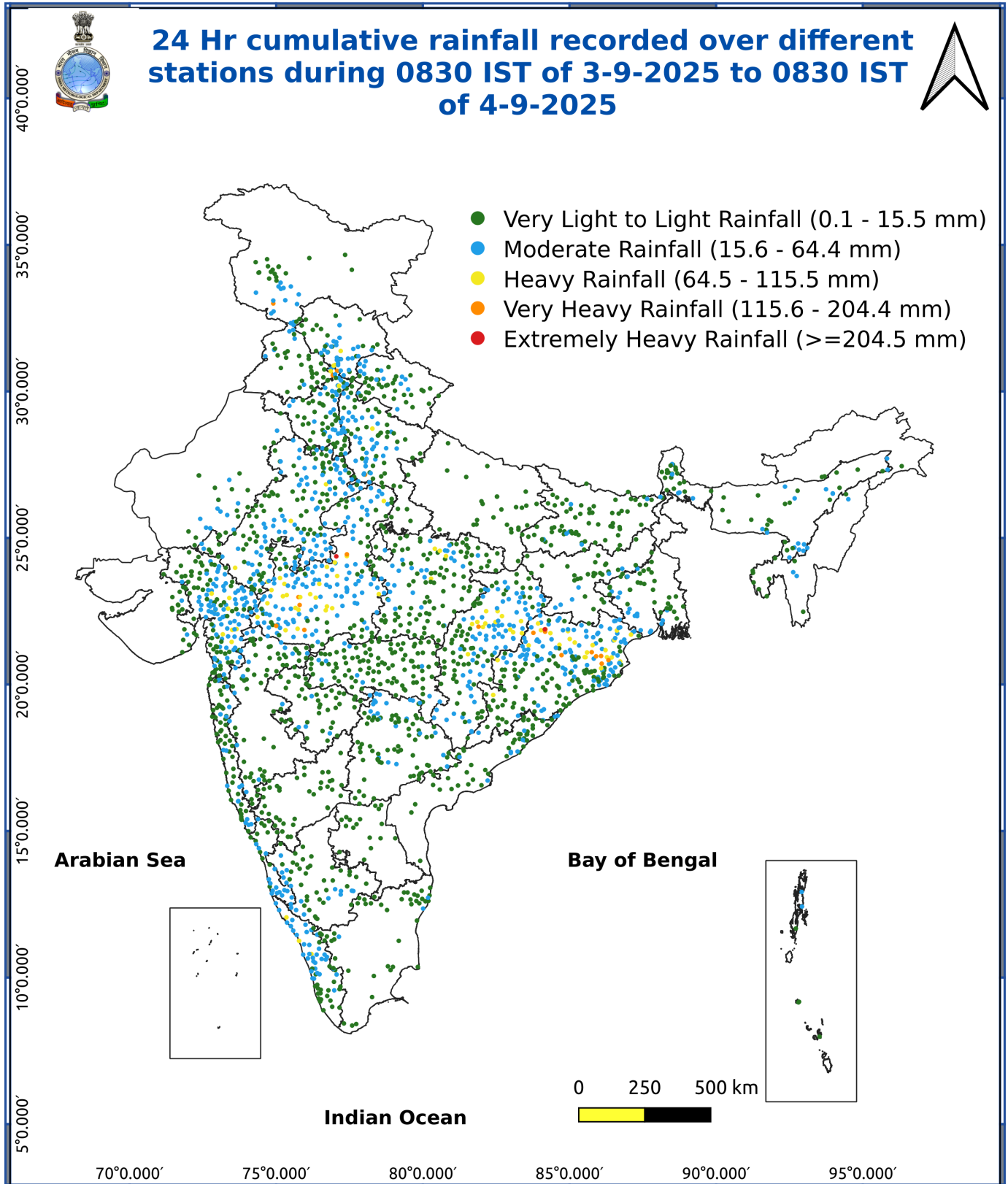


Fig. 4: Departure of Minimum Temp. Dated 2025-09-04





*Red color warning does not mean "Red Alert" Red color warning means "Take Action"

Forecast and warning for any day is valid from 0830 hours IST of day till 0830 hours IST of next day

For more details kindly visit <https://mausam.imd.gov.in> or contact 011-2434-4599

(Service to the nation since 1875)

Impact & Action Suggested due to:

- **Extremely heavy rainfall** at isolated places over Gujarat Region during 04th-06th; Saurashtra & Kutch on 06th & 07th September.
- **Very heavy rainfall** over West Madhya Pradesh, Konkan & Goa, Madhya Maharashtra, Saurashtra & Kutch on 04th & 05th; East Rajasthan during 04th-07th; West Rajasthan on 06th & 07th; Gujarat Region on 07th September.

Impact Expected

Localized Flooding of roads, water logging in low lying areas and closure of underpasses mainly in urban areas of the above region.

Occasional reduction in visibility due to heavy rainfall.

Disruption of traffic in major cities due to water logging in roads leading to increased travel time.

Minor damage to kutcha roads.

Possibilities of damage to vulnerable structure.

Localized Landslides/Mudslides/landslips/mudslips/landsinks/mudsinks.

Damage to horticulture and standing crops in some areas due to inundation.

It may lead to riverine flooding in some river catchments (for riverine flooding please visit Web page of CWC)

Action Suggested

Check for traffic congestion on your route before leaving for your destination.

Follow any traffic advisories that are issued in this regard.

Avoid going to areas that face the water logging problems often.

Avoid staying in vulnerable structure.

Agromet advisories for various parts of the country

Agromet advisories for likely impact of Heavy / Heavy to Very Heavy / Extremely Heavy Rainfall

(Based on the IBF and advisories issued by different AMFUs)

In **Gujarat**, make arrangements to drain out excess rain water from fields of rice, sugarcane, okra, tuber crops and vegetables in **South Gujarat Heavy Rainfall Zone**; rice, cotton, pigeon pea and fruit orchards (banana and mango) in **South Gujarat Zone**; rice, pearl millet, pigeon pea, cotton, soybean, maize and castor in **Middle Gujarat Zone**; cotton, green gram, black gram, pigeon pea, pearl millet and vegetables in **Bhal and Coastal Zone**; pulses, groundnut,

***Red color warning does not mean "Red Alert" Red color warning means "Take Action"**

Forecast and warning for any day is valid from 0830 hours IST of day till 0830 hours IST of next day

For more details kindly visit <https://mausam.imd.gov.in> or contact 011-2434-4599

(Service to the nation since 1875)

cotton, soybean and sesame in **North Sourashtra Zone** and groundnut, cotton, soybean, black gram, green gram, sesame and pigeon pea in **South Sourashtra Zone**.

In **Rajasthan**, make proper drainage arrangements in fields of cotton, maize, soybean and pulses in **Sub Humid Southern Plain and Aravali Hill Zone**; fields of cotton, maize and soybean in **Southern Humid Plain Zone**; fields of soybean and pigeon pea in **Southeastern Humid Plain Zone** and vegetable nurseries and fields of standing crops such as pearl millet, black gram and sesame in **Flood Prone Eastern Plain Zone**.

In **Madhya Pradesh**, provide adequate drainage in fields of soybean, maize and vegetables in **Malwa Plateau Zone**; maize, soybean, cotton, black gram and vegetables in **Jhabua Hills Zone**; maize, pulses, soybean, cotton and vegetables in **Satpura Plateau Zone** and soybean, cotton and vegetables in **Nimar Valley Zone**.

In **Maharashtra**, make arrangements to drain out excess water from fields of rice, finger millet, turmeric, groundnut, vegetables and fruit orchards in **Konkan** and rice, soybean, cotton, vegetable fields and fruit orchards in **ghat areas** of **Madhya Maharashtra**.

In **Chhattisgarh**, drain out excess water from the field of maize, groundnut, soybean, pigeon pea and vegetables in **Chattisgarh Plain Zone**.

In **Odisha**, drain out excess rain water from fields of finger millet, pulses, maize, groundnut and vegetables in **North Eastern Plateau Zone**; rice, maize and vegetables in **West Central Table Land Zone**; and rice, maize, black gram and vegetables in **North Central Plateau Zone**.

In **Jammu and Kashmir**, drain out excess water from fields of rice, maize, green gram and black gram in **Sub Tropical Zone**.

In **Uttarakhand**, maintain proper drainage channels in fields of finger millet, kidney beans and vegetables in **Hill Zone** and sugarcane, black gram, green gram, soybean, maize and finger millet in **Bhabar and Tarai Zone**.

In **Punjab**, make arrangements to drain out excess water from fields of cotton and maize in **Western Zone**.

In **Haryana**, make necessary arrangements to drain out excess water from fields of sugarcane, cotton, maize, pearl millet and vegetables in **Eastern Zone** and cotton, pearl millet, cluster bean and vegetables in **Western Zone**.

Livestock / Fishery

Keep the animals inside the shed during heavy rainfall and provide them balanced feed.

Store feed and fodder in a safe place to prevent spoilage.

Construct an outlet with proper netting around the ponds to drain out excess water, thereby preventing fish from escaping in case of overflow.

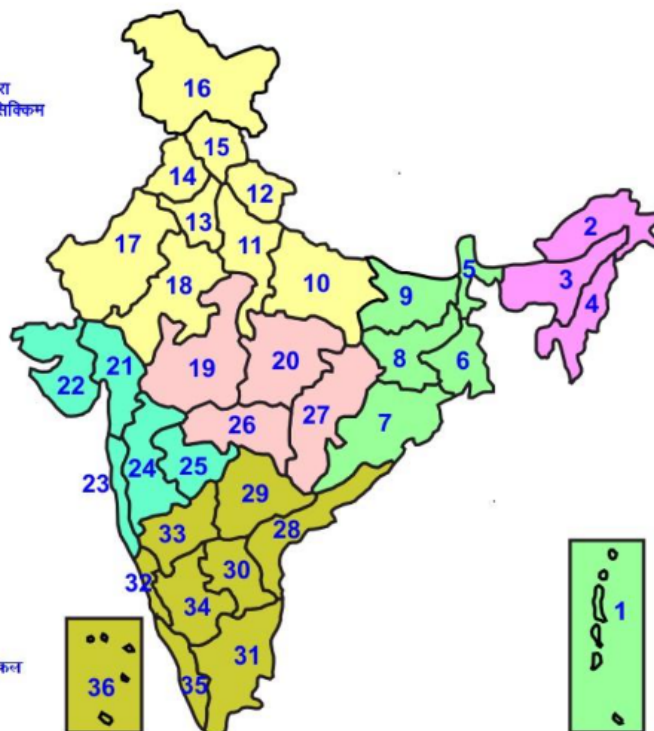
Agromet advisories for likely impact of Thunderstorm / Gusty Winds / Squally Winds

(Based on the IBF and advisories issued by different AMFUs)

Provide mechanical support to horticultural crops and staking or support to vegetables and young fruit plants / fruit-bearing plants to avoid lodging due to strong winds.

LEGENDS

- 1 अंडमान और निकोबार द्वीप समुह
- 2 अरुणाचल प्रदेश
- 3 असम और मेघालय
- 4 नागालैंड मनीपुर मीजोरम और त्रिपुरा
- 5 उप हिमालय पश्चिम बंगाल एवं सिक्किम
- 6 पश्चिम बंगाल
- 7 ओडिसा
- 8 झारखंड
- 9 बिहार
- 10 पूर्वी उत्तर प्रदेश
- 11 पश्चिम उत्तर प्रदेश
- 12 उत्तराखंड
- 13 हरियाणा चंडीगढ़ एवं दिल्ली
- 14 पंजाब
- 15 हिमाचल प्रदेश
- 16 जम्मू एवं कश्मीर एवं लद्दाख
- 17 पश्चिम राजस्थान
- 18 पूर्वी राजस्थान
- 19 पश्चिम मध्य प्रदेश
- 20 पूर्वी मध्य प्रदेश
- 21 गुजरात क्षेत्र
- 22 सौराष्ट्र एवं कच्छ
- 23 कोंकण एवं गोवा
- 24 मध्य महाराष्ट्र
- 25 मराठावाड़ा
- 26 विदर्भ
- 27 छत्तीसगढ़
- 28 तटीय आंध्र प्रदेश एवं यनम
- 29 तेलंगाना
- 30 रायलसीमा
- 31 तमिलनाडु, पुदुचेरी एवं कराईकल
- 32 तटिय कर्नाटक
- 33 आंतरिक उत्तरी कर्नाटक
- 34 आंतरिक दक्षिणी कर्नाटक
- 35 केरल एवं माहे
- 36 लक्षद्वीप



1. Andaman & Nicobar Islands
2. Arunachal Pradesh
3. Assam & Meghalaya
4. Nagaland, Manipur, Mizoram & Tripura
5. Sub-Himalayan West Bengal & Sikkim
6. Gangetic West Bengal
7. Orissa
8. Jharkhand
9. Bihar
10. East Uttar Pradesh
11. West Uttar Pradesh
12. Uttarakhand
13. Haryana, Chd & Delhi
14. Punjab
15. Himachal Pradesh
16. Jammu & Kashmir and Ladakh
17. West Rajasthan
18. East Rajasthan
19. West Madhya Pradesh
20. East Madhya Pradesh
21. Gujarat
22. Saurashtra
23. Konkan & Goa
24. Madhya Maharashtra
25. Marathawada
26. Vidharbha
27. Chhattisgarh
28. Coastal Andhra Pradesh & Yanam
29. Telangana
30. Rayalaseema
31. Tamilnadu, Puducherry & Karaikal
32. Coastal Karnataka
33. North Interior Karnataka
34. South Interior Karnataka
35. Kerala & Mahe
36. Lakshadweep

SPATIAL DISTRIBUTION (% of Stations reporting)


| % Stations | Category | % Stations | Category |
|------------|--------------------------------------|------------|-------------------------------|
| 76-100 | Widespread (WS/Most Places) | 26-50 | Scattered (SCT/ A Few Places) |
| 51-75 | Fairly Widespread (FWS/ Many Places) | 1-25 | Isolated (ISOL) |


Subdivision Colour


- NO WARNING
- WATCH (BE UPDATED)
- ALERT (BE PREPARED TO TAKE ACTION)
- WARNING (TAKE ACTION)

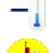
Probabilistic Forecast


| Terms | Probability of Occurrence (%) |
|-------------|-------------------------------|
| Unlikely | < 25 |
| Likely | 25 - 50 |
| Very Likely | 50 - 75 |
| Most Likely | > 75 |


-  Heavy Rain


 Thunderstorm & Lightning


 Strong surface winds


 Cold Wave


 Hot & Humid


 Very Heavy Rain


 Hailstorm


 Heat Wave


 Cold Day


 Extremely Heavy Rain


 Dust Storm


 Hot Day

 Ground Frost

 Heavy Snow

 Dust Raising Winds

 Warm Night

 Fog

*Red color warning does not mean "Red Alert" Red color warning means "Take Action"

Forecast and warning for any day is valid from 0830 hours IST of day till 0830 hours IST of next day

For more details kindly visit <https://mausam.imd.gov.in> or contact 011-2434-4599

(Service to the nation since 1875)

LEGENDS

WARNING

| |
|-------------------------------|
| WARNING (TAKE ACTION) |
| ALERT (BE PREPARED) |
| WATCH (BE UPDATED) |
| NO WARNING (NO ACTION) |

Probabilistic Forecast

| Terms | Probability of Occurrence (%) |
|-------------|-------------------------------|
| Unlikely | < 25 |
| Likely | 25 - 50 |
| Very Likely | 50 - 75 |
| Most Likely | > 75 |



Heavy: 64.5 to 115.5 mm/cm *
Very Heavy: 115.6 to 204.4 mm/cm *
Extremely Heavy: > 204.4 mm/cm *



When maximum temperature of a station reaches $\geq 40^{\circ}\text{C}$ for plains and $\geq 30^{\circ}\text{C}$ for hilly regions
(a) Based on Departure from normal

Heat Wave: Maximum Temperature Departure from normal 4.5°C to 6.4°C .
Severe Heat Wave: Maximum Temperature Departure from normal $\geq 6.5^{\circ}\text{C}$

(b). Based on Actual maximum temperature

Heat Wave: When actual maximum temperature $\geq 45^{\circ}\text{C}$.
Severe Heat Wave: When actual maximum temperature $\geq 47^{\circ}\text{C}$

(c). Criteria for heat wave for coastal stations

When maximum temperature departure is $> 4.5^{\circ}\text{C}$ from normal. Heat Wave may be described provided maximum temperature $\geq 37^{\circ}\text{C}$



When maximum temperature remains 40°C

Warm Night: When minimum temperature departure 4.5°C to 6.4°C .
Severe Warm Night: When minimum temperature departure $> 6.4^{\circ}\text{C}$.



When minimum temperature of a station $\leq 10^{\circ}\text{C}$ for plains and $\leq 0^{\circ}\text{C}$ for hilly regions.

(a). Based on departure

Cold Wave: Minimum Temperature Departure from normal -4.5°C to -6.4°C .
Severe Cold Wave: Minimum Temperature Departure from normal $\leq -6.5^{\circ}\text{C}$

(b) Based on actual Minimum Temperature (for Plains only)

Cold Wave: When Minimum Temperature is $\leq 4.0^{\circ}\text{C}$
Severe Cold Wave: When Minimum Temperature is $\leq 2.0^{\circ}\text{C}$

(c) For Coastal Stations

When Minimum Temperature departure is $\leq -4.5^{\circ}\text{C}$ & actual Minimum Temperature is $\leq 15^{\circ}\text{C}$



When minimum temperature of a station $\leq 10^{\circ}\text{C}$ for plains and $\leq 0^{\circ}\text{C}$ for hilly regions
Based on departure

Cold Day: Maximum Temperature Departure from normal -4.5°C to -6.4°C .
Severe Cold Day: Maximum Temperature Departure from normal $\leq -6.5^{\circ}\text{C}$



Phenomenon of small droplets suspended in air and the horizontal visibility $< 1\text{km}$

Moderate Fog: When the visibility between 500-200 metres
Dense Fog: when the visibility between 50-200 metres
Very Dense Fog: when the visibility < 50 metres



Sudden electrical discharges manifested by a flash of light (Lightning) and a sharp rumbling sound (thunder)



An ensemble of particles of dust or sand energetically lifted to great heights by a strong and turbulent wind.



Ice deposits on ground

Air temperature $\leq 4^{\circ}\text{C}$ (over Plains)



A strong wind that rises suddenly, lasts for at least 1 minute.

Moderate: Wind speed 52-61 kmph
Severe: Wind speed 62-87 kmph
Very Severe: Wind speed > 87 kmph



Effect of various waves in the sea over specific area

Rough to very rough: Wind speed 41-62 kmph (22-33 knots) & Wave height 2.5-6 metre
High to very high: Wind speed 63-117 kmph (34-63 knots) & Wave height 6-14 metre
Phenomenal: Wind speed > 117 kmph (> 63 knots) & Wave height > 14 metre



Cyclonic Storm: Wind speed 62-87 kmph (34-47 knots)

Severe Cyclonic Storm: Wind speed 88-117 kmph (48-63 knots)
Very Severe Cyclonic Storm: Wind speed 118-165 kmph (64-89 knots)
Extremely Severe Cyclonic Storm: Wind speed 166-220 kmph (90-119 knots)
Super Cyclone Storm: Wind speed > 220 kmph (> 119 knots)

*Red color warning does not mean "Red Alert" Red color warning means "Take Action"

Forecast and warning for any day is valid from 0830 hours IST of day till 0830 hours IST of next day

For more details kindly visit <https://mausam.imd.gov.in> or contact 011-2434-4599

(Service to the nation since 1875)