

2025-08-17

Time of Issue: 14:54:00 hours IST  
(Mid-Day)

## ALL INDIA WEATHER SUMMARY AND FORECAST BULLETIN

### Significant Weather Features

#### West India:

**Extremely heavy rainfall** very likely at isolated places over Konkan & Goa; Ghat areas of Madhya Maharashtra during 17<sup>th</sup> -19<sup>th</sup>; Gujarat State on 19<sup>th</sup> & 20<sup>th</sup> August.

Isolated to scattered **heavy to very heavy rainfall** likely over Madhya Maharashtra, Gujarat State during 17<sup>th</sup> -21<sup>st</sup>, Konkan (including Mumbai) & Goa during 17<sup>th</sup> -20<sup>th</sup>; Marathwada on 17<sup>th</sup> & 18<sup>th</sup> August.

Isolated **heavy rainfall** likely over Konkan & Goa, Madhya Maharashtra, Gujarat State during 7 days, Marathwada during next 3 days.

Strong surface winds (speed reaching 40-50 kmph) very likely over the region till 20<sup>th</sup> August.

Light to moderate rainfall at most/many places very likely over the region during next 7 days.

#### South Peninsular India:

**Extremely heavy rainfall** very likely at isolated places over Coastal Karnataka, Coastal Andhra Pradesh & Yanam, South Interior Karnataka on 17<sup>th</sup> & 18<sup>th</sup>; Telangana on 18<sup>th</sup> August.

Isolated **heavy rainfall** likely over Tamil Nadu on 17<sup>th</sup>; Coastal Andhra Pradesh & Yanam, Interior Karnataka during 17<sup>th</sup>-20<sup>th</sup>; Rayalaseema on 17<sup>th</sup> & 18<sup>th</sup>; Telangana during 17<sup>th</sup>-19<sup>th</sup>; Coastal Karnataka during 17<sup>th</sup>-21<sup>st</sup>; Kerala & Mahe during 18<sup>th</sup>-20<sup>th</sup> August with isolated **very heavy rainfall over Kerala & Mahe on 18<sup>th</sup>; Rayalaseema on 17<sup>th</sup> & 18<sup>th</sup>; Coastal Karnataka during 17<sup>th</sup> - 20<sup>th</sup>; Telangana, Interior Karnataka on 17<sup>th</sup>- 19<sup>th</sup> August.**

Strong surface winds (speed reaching 40-50 kmph) very likely over South Peninsular India till 19<sup>th</sup> August.

Light to moderate rainfall at most/many places accompanied with thunderstorm & lightning likely over Rayalaseema, Tamil Nadu, Coastal Andhra Pradesh & Yanam and Telangana during next 5 days.

#### East & Central India:

**Extremely heavy rainfall** very likely at isolated places over south Odisha & south Chhattisgarh on 18<sup>th</sup> August.

Isolated **heavy rainfall** likely over Madhya Pradesh & Chhattisgarh during next 7 days; Vidarbha during 4 days; Odisha during 17<sup>th</sup>-19<sup>th</sup>, 22<sup>nd</sup> & 23<sup>rd</sup>; Andaman & Nicobar Islands on 17<sup>th</sup>; Sub-Himalayan West Bengal & Sikkim on 17<sup>th</sup>, 19<sup>th</sup>, 20<sup>th</sup> & 21<sup>st</sup>; Gangetic West Bengal, Jharkhand on 22<sup>nd</sup> & 23<sup>rd</sup>; Bihar during 21<sup>st</sup>-23<sup>rd</sup>; Jharkhand on 19<sup>th</sup>, 21<sup>st</sup> & 22<sup>nd</sup> August with isolated **very heavy rainfall over West Madhya Pradesh on 17<sup>th</sup>, 18<sup>th</sup>, 22<sup>nd</sup> & 23<sup>rd</sup>; East Madhya Pradesh on 23<sup>rd</sup>; Vidarbha, Chhattisgarh, Odisha on 17<sup>th</sup> & 18<sup>th</sup> August.**

Light to moderate rainfall at most/many places accompanied with thunderstorm & lightning likely over the region during next 5 days.

#### Northwest India:

Isolated **heavy rainfall** likely over Jammu-Kashmir-Ladakh-Gilgit-Baltistan-Muzaffarabad during 17<sup>th</sup>- 19<sup>th</sup>; Himachal Pradesh on 17<sup>th</sup> & 18<sup>th</sup> & during 21<sup>st</sup>-23<sup>rd</sup>; Uttarakhand, East Rajasthan during next 7 days; Punjab during 17<sup>th</sup>-19<sup>th</sup> & on 23<sup>rd</sup>; Haryana Chandigarh & Delhi on 17<sup>th</sup>, 18<sup>th</sup>, 22<sup>nd</sup> & 23<sup>rd</sup>; West Uttar Pradesh on 22<sup>nd</sup> & 23<sup>rd</sup>; East Uttar Pradesh

\*Red color warning does not mean "Red Alert" Red color warning means "Take Action"

Forecast and warning for any day is valid from 0830 hours IST of day till 0830 hours IST of next day

For more details kindly visit <https://mausam.imd.gov.in> or contact 011-2434-4599

(Service to the nation since 1875)

during 21<sup>st</sup>-23<sup>rd</sup> August with **very heavy rainfall over Jammu-Kashmir-Ladakh-Gilgit-Baltistan-Muzaffarabad, Uttarakhand, Punjab, Haryana Chandigarh & Delhi on 17<sup>th</sup>; Himachal Pradesh on 17<sup>th</sup> & 23<sup>rd</sup> ; East Rajasthan on 20<sup>th</sup> August.**

Light/moderate rainfall at most/many places accompanied with thunderstorm & lightning likely over Jammu-Kashmir-Ladakh-Gilgit-Baltistan-Muzaffarabad, Uttarakhand & Rajasthan during next 7 days.

**Northeast India:**

Isolated **heavy rainfall** likely to continue over Assam & Meghalaya, Nagaland, Manipur, Mizoram & Tripura, Arunachal Pradesh during 7 days with **very heavy rainfall over Arunachal Pradesh on 20<sup>th</sup> & 21<sup>st</sup>; Nagaland, Manipur, Mizoram & Tripura, Assam & Meghalaya during 20<sup>th</sup>-23<sup>rd</sup> August.**

Light/moderate rainfall at many places accompanied with thunderstorm & lightning likely during next 3 days.

### Main Weather Observations:

❖ **Rainfall distribution** (from 0830 hours IST of yesterday to 0830 hours IST of today): **at most places** over Andaman & Nicobar Islands, Nagaland, Manipur, Mizoram & Tripura, Uttarakhand, Himachal Pradesh, Gujarat Region, Saurashtra & Kutch, Konkan & Goa, Madhya Maharashtra, Marathwada, Vidarbha, Rayalaseema, Coastal Karnataka, South Interior Karnataka and Kerala & Mahe; **at many places** over Assam & Meghalaya, Odisha, West Madhya Pradesh, Coastal Andhra Pradesh & Yanam, Telangana, North Interior Karnataka and Lakshadweep; **at a few places** over Arunachal Pradesh, Gangetic West Bengal, Haryana-Chandigarh-Delhi, Punjab, East Rajasthan, East Madhya Pradesh, Chhattisgarh and Tamil Nadu, Puducherry & Karaikal; **at isolated places** over Sub Himalayan West Bengal & Sikkim, Jharkhand, Bihar, East Uttar Pradesh, West Uttar Pradesh, Jammu-Kashmir-Ladakh-Gilgit-Baltistan-Muzaffarabad and West Rajasthan;

❖ **Significant rainfall recorded(in cm)** (from 0830 hours IST of yesterday to 0830 hours IST of today): **Punjab:** Phangota (dist Pathankot) 22; Ranjit Sagar Dam Site (dist Pathankot) 18; Madhopur (dist Pathankot), Thein Dam AWS (dist Pathankot) 8 Each; **Madhya Maharashtra:** Erandol (dist Jalgaon) 21; Mahabaleshwar (dist Satara) 16; Dahigaon - Fmo (dist Jalgaon) 13; Radhanagari (dist Kolhapur) 11; Girnadam - Fmo (dist Nashik) 10; Pachora (dist Jalgaon), Dhule (dist Dhule), Dharangaon (dist Jalgaon) 7 Each; **West Madhya Pradesh:** Sendhwa(med) (dist Barwani), Niwali (dist Barwani) 19 Each; Nepanagar (dist Burhanpur) 8; Pansemal (dist Barwani) 7; **Konkan & Goa:** Wakwali ARG (dist Ratnagiri) 19; Khed (dist Ratnagiri) 18; Mhasla (dist Raigad) 15; Mangaon (dist Raigad), Vasai (dist Palghar), Savarde-arg (dist Ratnagiri) 14 Each; Harnai IMD (dist Ratnagiri), Dapoli ARG (dist Ratnagiri) 13 Each; Sudhagad Pali (dist Raigad), Chiplun (dist Ratnagiri) 12 Each; Matheran (dist Raigad), Panvel ARG (dist Raigad), Mandangad (dist Ratnagiri), Bhiwandi (dist Thane), Mahad (dist Raigad) 11 Each; Tbia IMD Part Time (dist Thane), Thane (dist Thane), Shriwardhan (dist Raigad), Roha (dist Raigad), Pen (dist Raigad), Uran (dist Raigad), Poladpur (dist Raigad) 10 Each; Santacruz (dist Mumbai Suburban), Tala (dist Raigad), Palghar ARG (dist Palghar) 8 Each; Karjat ARG (dist Raigad) 7; **Coastal Karnataka:** Castle Rock (dist Uttara Kannada) 18; Jagalbet (dist Uttara Kannada) 14; Dharmasthala (dist Dakshina Kannada) 10; Siddapura (dist Udupi) 7; **Telangana:** Adilabad (dist Adilabad), Tamsi (dist Adilabad) 17 Each; Talamadugu (dist Adilabad) 16; Sarangapurnrl (dist Nirmal) 13; Bheemini (dist Mancheria) 12; Mancheria (dist Mancheria), Jainoor (dist Kumaram Bheem), Kerameri (dist Kumaram Bheem) 10 Each; Bazarhathnoor (dist Adilabad), Boath (dist Adilabad) 9 Each; Dilawarpur (dist Nirmal), Velagatoor (dist Jagtial) 8 Each; Dahegaon (dist Kumaram Bheem), Tandoormncl (dist Mancheria), Jaipur (dist Mancheria) 7 Each; **Marathwada:** Himayatnagar (dist Nanded) 16; Hadgaon (dist Nanded) 13; Tondapur- ARG (dist Hingoli) 12; Soegaon (dist Chh. Sambhajinagar) 11; Vasmal (dist Hingoli), Kallamnuri (dist Hingoli) 8 Each; Nanded - IMD Parttime (dist Nanded), Sengaon (dist Hingoli), Purna (dist Parbhani), Kandhar (dist Nanded) 7 Each; **Saurashtra & Kutch:** Bhesan (dist Junagadh) 16; Jamkandorna (dist Rajkot) 12; Gondal (dist Rajkot), Vadia (dist Amreli) 10 Each; Dhari (dist Amreli) 8; Halvad (dist Morbi) 7; **Chhattisgarh:** Durg (dist Durg) 14; Antagarh (dist Kanker) 9; **Vidarbha:** Umerkhed (dist Yeotmal) 14; Mahagaon (dist Yeotmal) 9; Pusad (dist Yeotmal) 8; Akola (dist Akola), Malegaon (dist Washim), Mehkar (dist Buldhana), Buldana (dist Buldhana) 7 Each; **South Interior Karnataka:** Sringeri HMS (dist Chikkamagaluru) 13; Kammardi (dist Chikkamagaluru), Agumbe AWS (dist Shivamogga), Jayapura (dist Chikkamagaluru) 12 Each; Koppa (dist Chikkamagaluru) 11; Kalasa (dist Chikkamagaluru) 8; Balehonnur (dist Chikkamagaluru) 7; **Nagaland, Manipur, Mizoram & Tripura:** Mangkolemba (dist Mokochung) 12; Chhamonu (dist Dhalai) 11; Kohima (dist Kohima), Wokha Sadar Nsdma AWS (dist Wokha) 8 Each; **Himachal Pradesh:** Kangra AP (dist Kangra), Nagrota Surian (dist Kangra) 11 Each; Nahan (dist Sirmaur) 10; Jogindarnagar (dist Mandi) 8; Paonta (dist Sirmaur) 7; **East Rajasthan:** Masuda SR (dist Ajmer), Mounntabu Tehsil SR (dist Sirohi) 11 Each; Kishangarh (dist Ajmer) 8; **West Uttar Pradesh:** Mavi Fmo (dist Shamli) 10; **Haryana-Chandigarh-Delhi:** Samalkha (dist Panipat), Narayangarh ARG (dist Ambala) 10 Each; Dadupur (dist Yamuna Nagar) 7; **Tamil Nadu, Puducherry & Karaikal:** Chinnakalar (dist Coimbatore) 9; Valparai Taluk Office (dist Coimbatore), Valparai Pap (dist Coimbatore) 7 Each; **Andaman & Nicobar Islands:** Port Blair (dist South Andaman) 9; **Gujarat Region:** Rajpipala (dist Narmada), Dantiwada (dist Banaskantha) 9 Each; Nandod (dist Narmada) 8; **Jammu-Kashmir-Ladakh-Gilgit-Baltistan-Muzaffarabad:** Kathua ARG (dist Kathua), Kathua (dist Kathua) 9 Each; Kathua Kvk (dist Kathua) 8; Chatha Agro AWS (dist Jammu), Samba AWS (dist Samba) 7 Each; **Uttarakhand:** Sama (dist Bageshwar) 9; Uttar Kashi (dist Uttarkashi), Jakholi (dist Rudrapur), Loharkhet (dist Bageshwar), Dhanaulti (dist Garhwal Tehri), Mori (dist Uttarkashi), Didihat (dist Pithoragarh) 8 Each; Mussoorie (dist Dehradun), Uttar Kashi (CWC) (dist Uttarkashi), Barkot (dist Uttarkashi), Bageshwar (thmo) (dist Bageshwar), Laksar (dist Hardwar) 7 Each; **Odisha:** Th Rampur (dist Kalahandi) 8; **Kerala & Mahe:** Ayyankunnu AWS (dist Cannur) 8; **East Madhya Pradesh:** Mohkheda (dist Chindwara) 7.

\*Red color warning does not mean "Red Alert" Red color warning means "Take Action"

Forecast and warning for any day is valid from 0830 hours IST of day till 0830 hours IST of next day

For more details kindly visit <https://mausam.imd.gov.in> or contact 011-2434-4599

(Service to the nation since 1875)

❖ **Heavy Rainfall observed** (from 0830 hours IST of yesterday to 0830 hours IST of today): **Extremely heavy rain** at isolated places over Punjab and Madhya Maharashtra. **Heavy to very heavy rain** at isolated places over Nagaland, Manipur, Mizoram & Tripura, Punjab, West Madhya Pradesh, Saurashtra & Kutch, Konkan & Goa, Madhya Maharashtra, Marathwada, Vidarbha, Chhattisgarh, Telangana, Coastal Karnataka and South Interior Karnataka. **Heavy rain** at a few places over Konkan & Goa and at isolated places over Andaman & Nicobar Islands, Odisha, West Uttar Pradesh, Uttarakhand, Haryana-Chandigarh-Delhi, Himachal Pradesh, Jammu-Kashmir-Ladakh-Gilgit-Baltistan-Muzaffarabad, East Rajasthan, East Madhya Pradesh, Gujarat Region, Tamil Nadu, Puducherry & Karaikal and Kerala & Mahe.

❖ **Minimum Temperature Departures (as on 17-08-2025):** **markedly above normal(> 5.1°C)** at many places over East Madhya Pradesh; at few places over West Madhya Pradesh; at isolated places over Assam & Meghalaya, Odisha, Bihar, East Uttar Pradesh, West Uttar Pradesh, Himachal Pradesh, West Rajasthan and East Rajasthan. **appreciably above normal(3.1°C to 5.0°C)** at few places over Sub Himalayan West Bengal & Sikkim and Marathwada; at isolated places over Jammu-Kashmir-Ladakh-Gilgit-Baltistan-Muzaffarabad, Gujarat Region and Saurashtra & Kutch. **above normal(1.6°C to 3.0°C)** at most places over Arunachal Pradesh; at few places over Gangetic West Bengal, Punjab and Lakshadweep; at isolated places over Nagaland, Manipur, Mizoram & Tripura, Uttarakhand, Haryana-Chandigarh-Delhi, Madhya Maharashtra, Vidarbha, Chhattisgarh, Tamil Nadu, Puducherry & Karaikal and South Interior Karnataka. **near normal(-1.5°C to 1.5°C)** at many places over Andaman & Nicobar Islands and Telangana; at most places over Jharkhand, Konkan & Goa, Coastal Andhra Pradesh & Yanam, Rayalaseema, Coastal Karnataka, North Interior Karnataka and Kerala & Mahe. **The lowest minimum temperature** of 18.0°C is reported at KHANDWA (MADHYA PRADESH) over the Plains of India.

❖ **Maximum Temperature Departures (as on 16-08-2025):** **markedly above normal(> 5.1°C)** at few places over Arunachal Pradesh; at isolated places over Assam & Meghalaya. **appreciably above normal(3.1°C to 5.0°C)** at few places over Sub Himalayan West Bengal & Sikkim, East Uttar Pradesh, Jammu-Kashmir-Ladakh-Gilgit-Baltistan-Muzaffarabad and West Rajasthan; at isolated places over Gangetic West Bengal, Odisha, West Madhya Pradesh, East Madhya Pradesh, Saurashtra & Kutch, Vidarbha and Chhattisgarh. **above normal(1.6°C to 3.0°C)** at many places over Bihar; at few places over Nagaland, Manipur, Mizoram & Tripura, West Uttar Pradesh and Uttarakhand; at isolated places over Jharkhand, Himachal Pradesh, East Rajasthan and Gujarat Region. **near normal(-1.5°C to 1.5°C)** at many places over Haryana-Chandigarh-Delhi, Konkan & Goa, Madhya Maharashtra, Tamil Nadu, Puducherry & Karaikal, South Interior Karnataka and Lakshadweep; at most places over Punjab and Coastal Karnataka; at few places over Marathwada, Coastal Andhra Pradesh & Yanam, Telangana, Rayalaseema, North Interior Karnataka and Kerala & Mahe. **The highest maximum temperature** of 40.6°C was reported at JAISALMER (RAJASTHAN).

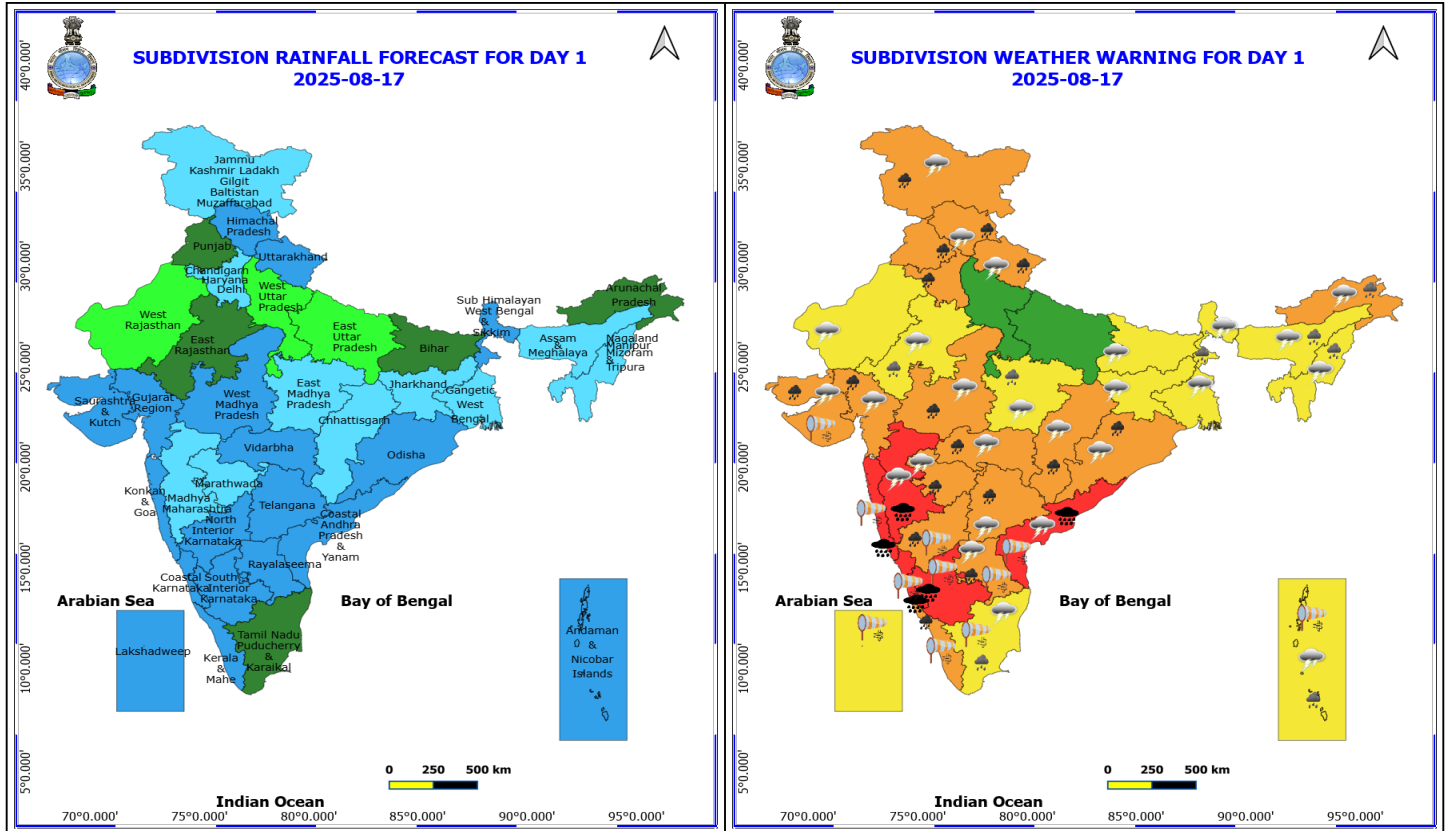


### Meteorological Analysis (Based on 0830 hours IST)

- Under the influence of the upper air cyclonic circulation over west central and adjoining northwest Bay of Bengal off north Andhra Pradesh and south Odisha coasts, a **Low Pressure area** has formed over the same region at 0830 hrs IST of today, 17<sup>th</sup> August 2025. The associated cyclonic circulation extends upto 9.6 km above mean sea level tilting southwestwards with height. It is likely to move west –northwestwards and concentrate into a depression during subsequent 24-hours and cross south Odisha-north Andhra Pradesh coasts around forenoon of 19<sup>th</sup> Aug 2025.
- The **Low-Pressure area** over Vidarbha & neighbourhood persists over the same region at 0830 hrs IST of today, the 17<sup>th</sup> August 2025. The associated upper air cyclonic circulation extends upto 5.8 km above mean sea level tilting southwestwards with height. It is likely to move west-northwestwards and weaken gradually and would reach over Gujarat around 18<sup>th</sup> August morning as a remnant Cyclonic Circulation.
- The **monsoon trough** at mean sea level now passes through Jaisalmer, Udaipur, Ratlam, centre of low-pressure area over Vidarbha & neighbourhood, Jagdalpur, centre of low-pressure area over west central & adjoining northwest Bay of Bengal off north Andhra Pradesh and south Odisha coasts and thence east-southeastwards to eastcentral Bay of Bengal.
- An **upper air cyclonic circulation** lies over central Pakistan & adjoining Punjab at 1.5km above mean sea level.
- An off-shore **trough** run from south Konkan to north Kerala at mean sea level.
- The **upper air cyclonic circulation** over Northeast Arabian Sea & adjoining south Gujarat & Konkan & Goa between 1.5 & 5.8 km above mean sea level persists.
- The **east-west trough** now runs from upper air cyclonic circulation associated with low pressure area over west central and adjoining northwest Bay of Bengal off north Andhra Pradesh & south Odisha coasts to upper air cyclonic circulation over Northeast Arabian Sea & adjoining south Gujarat & Konkan across north Marathwada, upper air cyclonic circulation associated with the low-pressure area over Vidarbha, south Chhattisgarh, south Odisha between 1.5 & 5.8 km above mean sea level tilting southwards with height.
- The **upper air cyclonic circulation** over Jammu-Kashmir & neighbourhood at 3.1 km above mean sea level has become less marked.

### Weather Outlook for subsequent 3 days

- Fairly widespread to widespread rainfall likely over the most parts of the country.
- A low pressure area is likely to form over northwest Bay of Bengal & Adjoining Bangladesh region around 24<sup>th</sup> August, 2025.



## 17 August (Day 1)

- ❖ **Heavy to Very Heavy Rainfall with isolated Extremely Heavy Rainfall** very likely at isolated places over Coastal Andhra Pradesh, Coastal Karnataka, Konkan & Goa, Madhya Maharashtra and South Interior Karnataka.
- ❖ **Heavy to Very Heavy Rainfall** very likely at isolated places over Chhattisgarh, Gujarat State, Haryana, Chandigarh & Delhi, Himachal Pradesh, Jammu-Kashmir-Ladakh-Gilgit-Baltistan-Muzaffarabad, Kerala & Mahe, Marathwada, North Interior Karnataka, Odisha, Punjab, Rayalaseema, Telangana, Uttarakhand, Vidarbha and West Madhya Pradesh.
- ❖ **Heavy Rainfall** very likely at isolated places over Andaman & Nicobar Islands, Arunachal Pradesh, Assam & Meghalaya, East Madhya Pradesh, East Rajasthan, Nagaland, Manipur, Mizoram and Tripura, Sub Himalayan West Bengal & Sikkim and Tamil Nadu Puducherry & Karaikal.
- ❖ **Thunderstorm accompanied with lightning & gusty winds(40-50kmph)** very likely at isolated places over Andaman & Nicobar Islands.
- ❖ **Thunderstorm accompanied with lightning & gusty winds(30-40kmph)** very likely at isolated places over Bihar, Jammu-Kashmir-Ladakh-Gilgit-Baltistan-Muzaffarabad, Jharkhand, Odisha and West Bengal & Sikkim.
- ❖ **Thunderstorm accompanied with Lightning** very likely at isolated places over Andhra Pradesh, Arunachal Pradesh, Assam & Meghalaya, Chhattisgarh, Gujarat State, Himachal Pradesh, Madhya Pradesh, Maharashtra, Nagaland, Manipur, Mizoram and Tripura, Rajasthan, Tamil Nadu Puducherry & Karaikal, Telangana and Uttarakhand.
- ❖ **Strong Surface Winds** very likely at isolated places over Andaman & Nicobar Islands, Andhra Pradesh, Karnataka, Kerala & Mahe, Konkan & Goa, Lakshadweep, Saurashtra & Kutch and Tamil Nadu Puducherry & Karaikal.

\*Red color warning does not mean "Red Alert" Red color warning means "Take Action"

Forecast and warning for any day is valid from 0830 hours IST of day till 0830 hours IST of next day

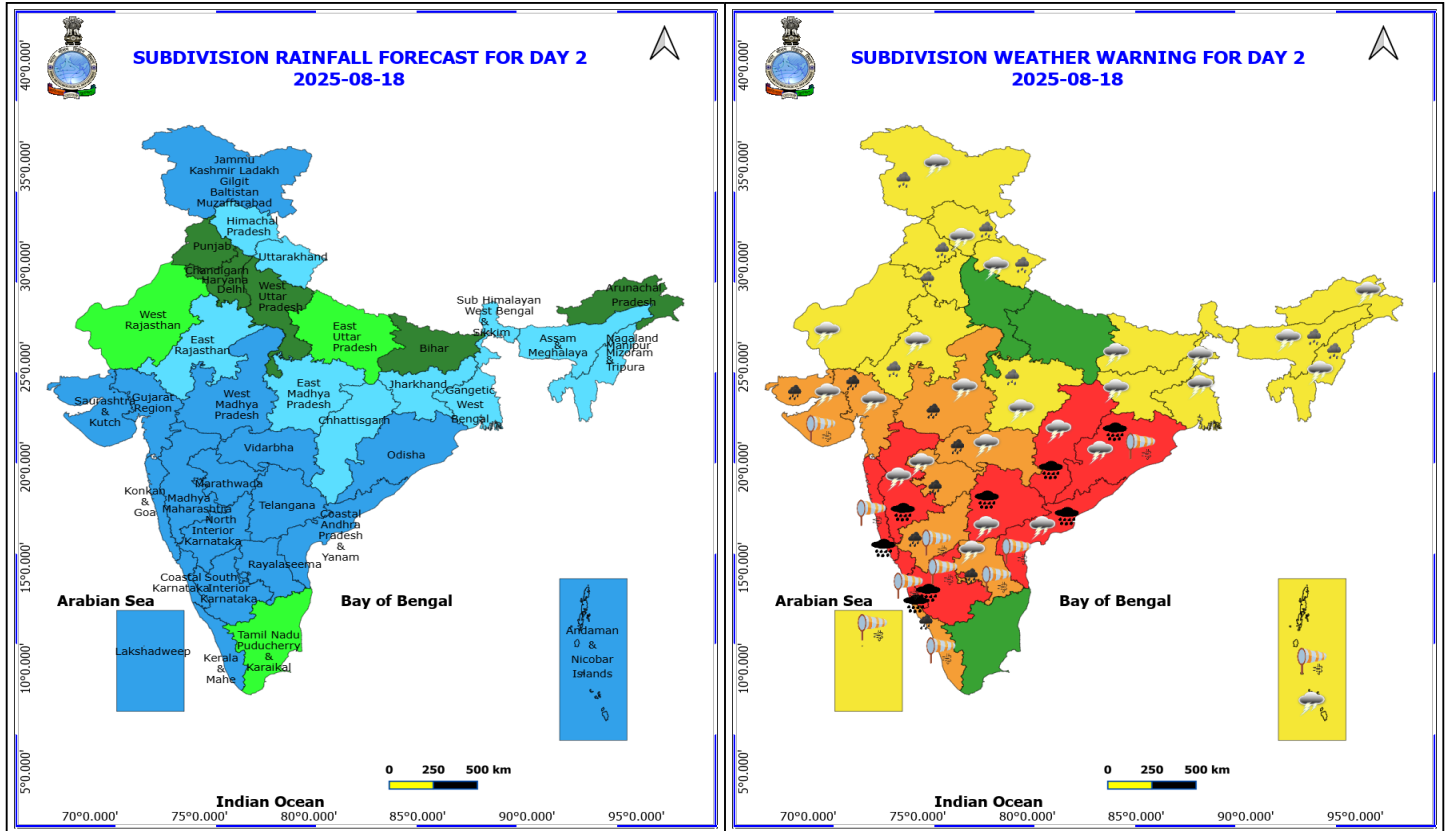
For more details kindly visit <https://mausam.imd.gov.in> or contact 011-2434-4599

(Service to the nation since 1875)

Squally wind with speed reaching 45 kmph to 55 kmph gusting to 65 kmph is likely to prevail along and off Somalia, Yemen, Oman coasts, most parts of westcentral Arabian sea and adjoining areas of southwest, eastcentral Arabian Sea.

Squally weather with wind speed reaching 40 - 50 kmph gusting to 60 kmph likely to prevail along and off Karnataka & Kerala coasts, over Lakshadweep & Comorin areas, Gulf of Mannar, Most parts of Eastcentral & adjoining Northeast & westcentral Arabian Sea, along and off Sri-Lanka coast, over Tamil Nadu, Andhra Pradesh and south Odisha Coasts, over most parts of south, central Bay of Bengal & adjoining northwest Bay of Bengal , over Andaman Sea.

Squally weather with wind speed reaching 45 - 55 kmph gusting to 65 kmph likely to prevail along and off south Gujarat, Konkan & Goa coasts adjoining northeast & eastcentral Arabian sea.



## 18 August (Day 2)

- ❖ **Heavy to Very Heavy Rainfall with isolated Extremely Heavy Rainfall** very likely at isolated places over Chhattisgarh, Coastal Andhra Pradesh, Coastal Karnataka, Konkan & Goa, Madhya Maharashtra, Odisha, South Interior Karnataka and Telangana.
- ❖ **Heavy to Very Heavy Rainfall** very likely at isolated places over Gujarat State, Kerala & Mahe, Marathwada, North Interior Karnataka, Rayalaseema, Vidarbha and West Madhya Pradesh.
- ❖ **Heavy Rainfall** very likely at isolated places over Assam & Meghalaya, East Madhya Pradesh, East Rajasthan, Haryana, Chandigarh & Delhi, Himachal Pradesh, Jammu-Kashmir-Ladakh-Gilgit-Baltistan-Muzaffarabad, Nagaland, Manipur, Mizoram and Tripura, Punjab and Uttarakhand.
- ❖ **Thunderstorm accompanied with lightning & gusty winds(30-40kmph)** very likely at isolated places over Andaman & Nicobar Islands, Bihar, Jammu-Kashmir-Ladakh-Gilgit-Baltistan-Muzaffarabad, Jharkhand, Odisha and West Bengal & Sikkim.
- ❖ **Thunderstorm accompanied with Lightning** very likely at isolated places over Andhra Pradesh, Arunachal Pradesh, Assam & Meghalaya, Chhattisgarh, Gujarat State, Himachal Pradesh, Madhya Pradesh, Maharashtra, Nagaland, Manipur, Mizoram and Tripura, Rajasthan, Telangana and Uttarakhand.
- ❖ **Strong Surface Winds** very likely at isolated places over Andaman & Nicobar Islands, Andhra Pradesh, Karnataka, Kerala & Mahe, Konkan & Goa, Lakshadweep, Odisha and Saurashtra & Kutch.

Squally wind with speed reaching 45 kmph to 55 kmph gusting to 65 kmph is likely to prevail along and off Somalia, Oman coasts, most parts of westcentral Arabian sea and adjoining areas of southwest, eastcentral Arabian Sea.

Squally weather with wind speed reaching 40 - 50 kmph gusting to 60 kmph likely to prevail along and off Karnataka

**\*Red color warning does not mean "Red Alert" Red color warning means "Take Action"**

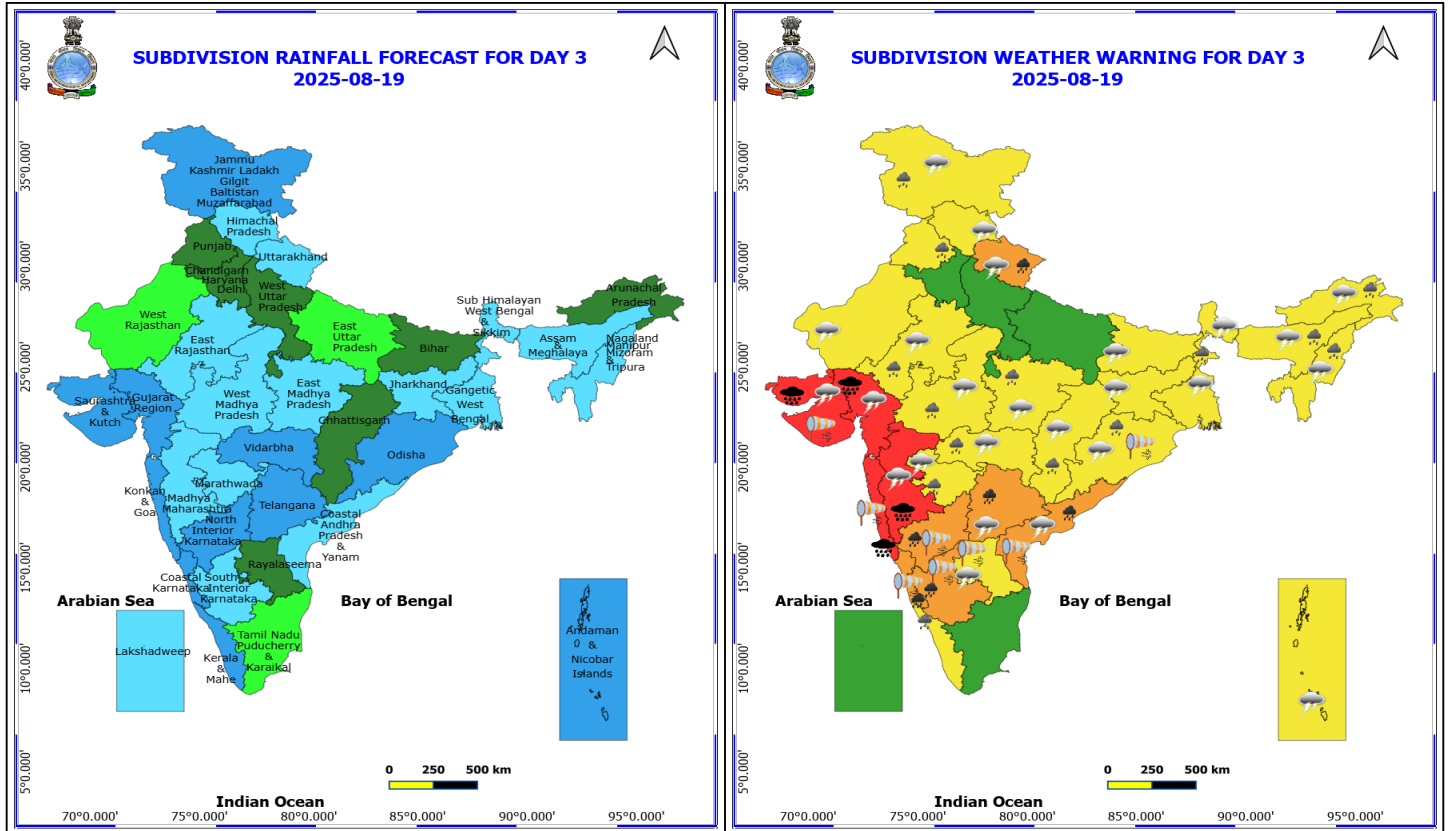
Forecast and warning for any day is valid from 0830 hours IST of day till 0830 hours IST of next day

For more details kindly visit <https://mausam.imd.gov.in> or contact 011-2434-4599

(Service to the nation since 1875)

& Kerala coasts, over Lakshadweep & Comorin areas, Gulf of Mannar, along and off Sri-Lanka coast, over most parts of Bay of Bengal, along and off Tamil Nadu, Andhra Pradesh & Odisha coasts and over Andaman Sea.

Squally weather with wind speed reaching 45 - 55 kmph gusting to 65 kmph likely to prevail over northeast Arabian sea and along & off south Gujarat coast, Konkan & Goa coasts and adjoining most parts of eastcentral, & few parts of northeast and southeast Arabian Sea; along and off Andhra Pradesh and Odisha coasts adjoining westcentral and Northwest Bay of Bengal.



### 19 August (Day 3)

- ❖ **Heavy to Very Heavy Rainfall with isolated Extremely Heavy Rainfall** very likely at isolated places over Gujarat State, Konkan & Goa and Madhya Maharashtra.
- ❖ **Heavy to Very Heavy Rainfall** very likely at isolated places over Coastal Andhra Pradesh, Karnataka, Telangana and Uttarakhand.
- ❖ **Heavy Rainfall** very likely at isolated places over Arunachal Pradesh, Assam & Meghalaya, Chhattisgarh, East Rajasthan, Jammu-Kashmir-Ladakh-Gilgit-Baltistan-Muzaffarabad, Kerala & Mahe, Madhya Pradesh, Marathwada, Nagaland, Manipur, Mizoram and Tripura, Odisha, Punjab, Sub Himalayan West Bengal & Sikkim and Vidarbha.
- ❖ **Thunderstorm accompanied with lightning & gusty winds(30-40kmph)** very likely at isolated places over Andaman & Nicobar Islands, Bihar, Jammu-Kashmir-Ladakh-Gilgit-Baltistan-Muzaffarabad, Jharkhand, Odisha and West Bengal & Sikkim.
- ❖ **Thunderstorm accompanied with Lightning** very likely at isolated places over Andhra Pradesh, Arunachal Pradesh, Assam & Meghalaya, Chhattisgarh, Gujarat State, Himachal Pradesh, Madhya Pradesh, Maharashtra, Nagaland, Manipur, Mizoram and Tripura, Rajasthan, Telangana and Uttarakhand.
- ❖ **Strong Surface Winds** very likely at isolated places over Andhra Pradesh, Karnataka, Konkan & Goa, Odisha and Saurashtra & Kutch.

Squally wind with speed reaching 45 kmph to 55 kmph gusting to 65 kmph is likely to prevail along and off Somalia, Oman coasts, most parts of westcentral Arabian sea and adjoining areas of southwest, eastcentral Arabian Sea.

Squally weather with wind speed reaching 40 - 50 kmph gusting to 60 kmph likely to prevail along and off Karnataka & Kerala coasts, over Lakshadweep & Comorin areas, Gulf of Mannar, along and off Sri-Lanka coast, over most

**\*Red color warning does not mean "Red Alert" Red color warning means "Take Action"**

Forecast and warning for any day is valid from 0830 hours IST of day till 0830 hours IST of next day

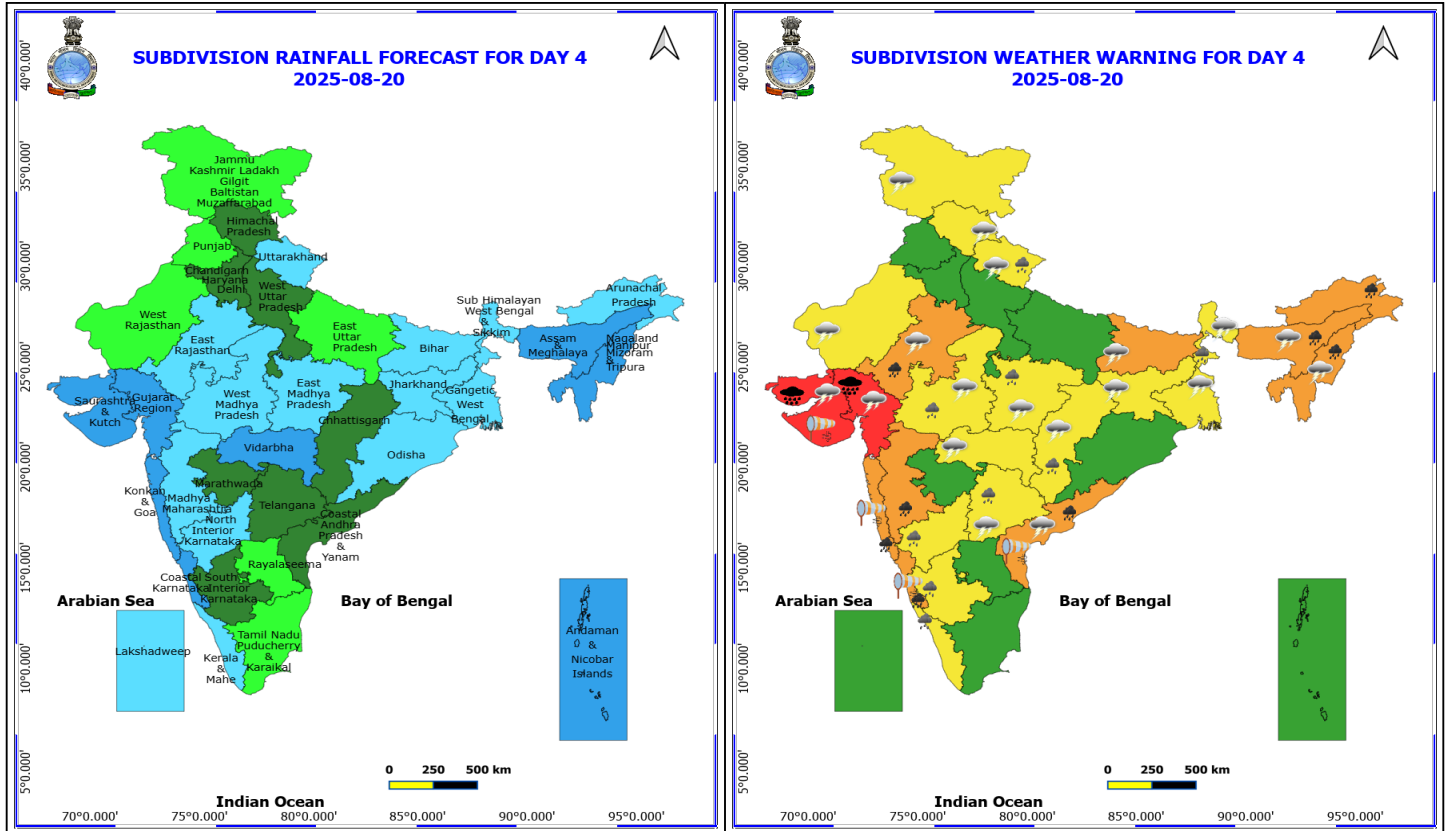
For more details kindly visit <https://mausam.imd.gov.in> or contact 011-2434-4599

(Service to the nation since 1875)

parts of Bay of Bengal, along and off Tamil Nadu, Andhra Pradesh & Odisha coasts.

Squally weather with wind speed reaching 45 - 55 kmph gusting to 65 kmph likely to prevail over northeast Arabian sea and along & off south Gujarat coast, Konkan & Goa coasts and adjoining most parts of eastcentral, & few parts of northeast and southeast Arabian Sea; along and off Andhra Pradesh and Odisha coasts adjoining westcentral and Northwest Bay of Bengal.

Squally weather with wind speed reaching 50 - 60 kmph gusting to 70 kmph likely to prevail over eastcentral Arabian sea and along & off Konkan coasts.



## 20 August (Day 4)

- ❖ **Heavy to Very Heavy Rainfall with isolated Extremely Heavy Rainfall** likely at isolated places over Gujarat State.
- ❖ **Heavy to Very Heavy Rainfall** likely at isolated places over Arunachal Pradesh, Assam & Meghalaya, Coastal Andhra Pradesh, Coastal Karnataka, East Rajasthan, Konkan & Goa, Madhya Maharashtra and Nagaland, Manipur, Mizoram and Tripura.
- ❖ **Heavy Rainfall** likely at isolated places over Chhattisgarh, Interior Karnataka, Kerala & Mahe, Madhya Pradesh, Sub Himalayan West Bengal & Sikkim, Telangana and Uttarakhand.
- ❖ **Thunderstorm accompanied with lightning & gusty winds(40-50kmph)** likely at isolated places over Bihar.
- ❖ **Thunderstorm accompanied with lightning & gusty winds(30-40kmph)** likely at isolated places over Jammu-Kashmir-Ladakh-Gilgit-Baltistan-Muzaffarabad, Jharkhand and West Bengal & Sikkim.
- ❖ **Thunderstorm accompanied with Lightning** likely at isolated places over Assam & Meghalaya, Chhattisgarh, Coastal Andhra Pradesh, Gujarat State, Himachal Pradesh, Madhya Pradesh, Nagaland, Manipur, Mizoram and Tripura, Rajasthan, Telangana, Uttarakhand and Vidarbha.
- ❖ **Strong Surface Winds** likely at isolated places over Coastal Andhra Pradesh, Coastal Karnataka, Konkan & Goa and Saurashtra & Kutch.

Squally wind with speed reaching 45 kmph to 55 kmph gusting to 65 kmph is likely to prevail along and off Somalia, Oman coasts, most parts of westcentral Arabian sea and adjoining areas of southwest, eastcentral Arabian Sea.

Squally weather with wind speed reaching 40 - 50 kmph gusting to 60 kmph likely to prevail along and off Karnataka,

**\*Red color warning does not mean "Red Alert" Red color warning means "Take Action"**

Forecast and warning for any day is valid from 0830 hours IST of day till 0830 hours IST of next day

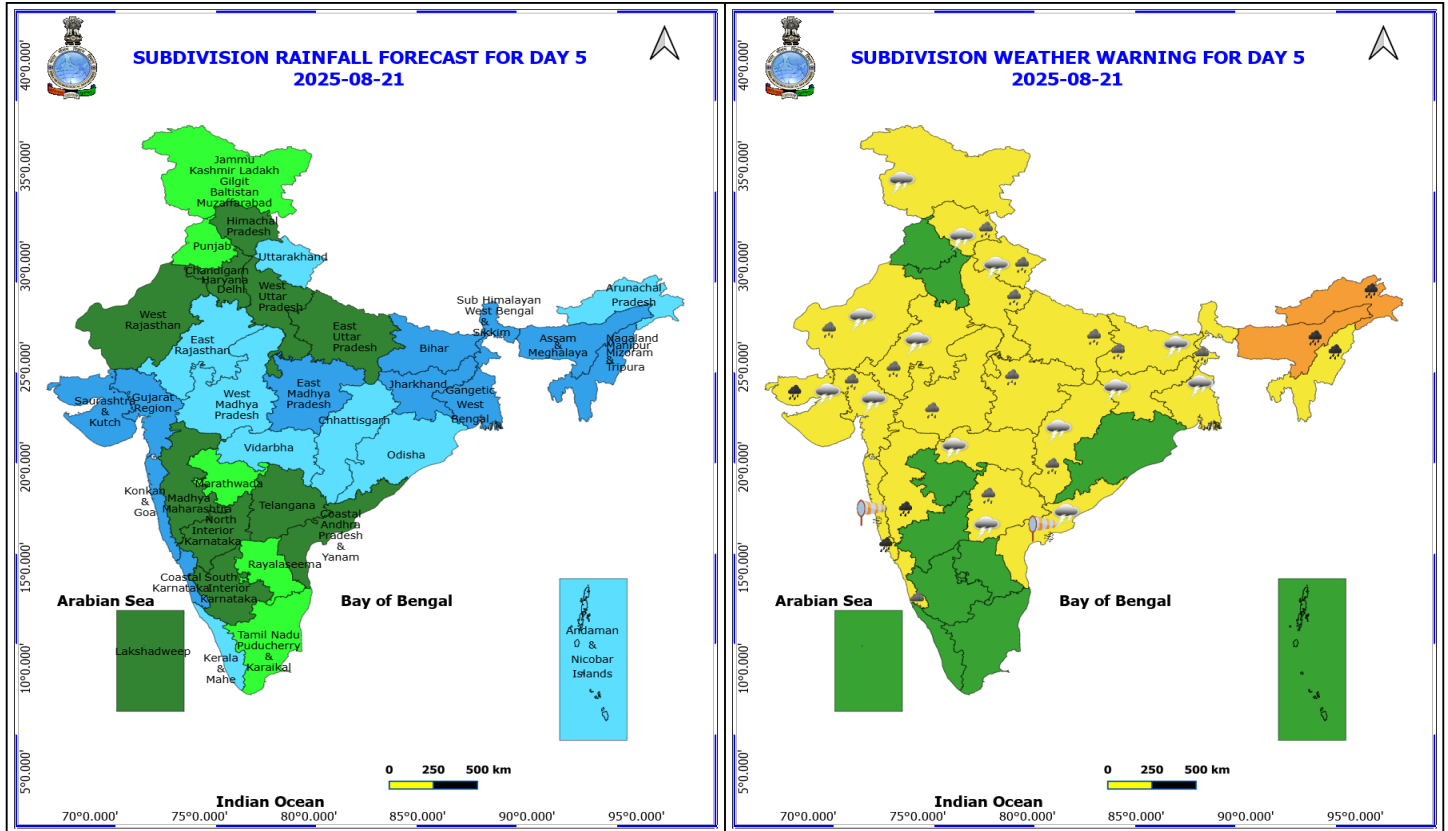
For more details kindly visit <https://mausam.imd.gov.in> or contact 011-2434-4599

(Service to the nation since 1875)

over most parts westcentral & northwest and adjoining sea areas of Bay of Bengal, North Andhra Pradesh & Odisha coasts.

Squally weather with wind speed reaching 45 - 55 kmph gusting to 65 kmph likely to prevail over northeast Arabian sea and along & off south Gujarat coast, Konkan & Goa coasts and adjoining most parts of eastcentral, & few parts of northeast Arabian Sea; along and off north Andhra Pradesh adjoining westcentral Bay of Bengal.

Squally weather with wind speed reaching 50 - 60 kmph gusting to 70 kmph likely to prevail over eastcentral Arabian sea and along & off north Konkan coasts.



## 21 August (Day 5)

- ❖ **Heavy to Very Heavy Rainfall** likely at isolated places over Arunachal Pradesh, Assam & Meghalaya, Konkan & Goa, Madhya Maharashtra, Nagaland, Manipur, Mizoram and Tripura and Saurashtra & Kutch.
- ❖ **Heavy Rainfall** likely at isolated places over Bihar, Chhattisgarh, Coastal Karnataka, Gujarat Region, Himachal Pradesh, Madhya Pradesh, Rajasthan, Sub Himalayan West Bengal & Sikkim, Telangana, Uttar Pradesh and Uttarakhand.
- ❖ **Thunderstorm accompanied with lightning & gusty winds(30-40kmph)** likely at isolated places over Bihar, Gangetic West Bengal, Jammu-Kashmir-Ladakh-Gilgit-Baltistan-Muzaffarabad and Jharkhand.
- ❖ **Thunderstorm accompanied with Lightning** likely at isolated places over Chhattisgarh, Coastal Andhra Pradesh, Gujarat State, Himachal Pradesh, Rajasthan, Telangana, Uttarakhand and Vidarbha.
- ❖ **Strong Surface Winds** likely at isolated places over Coastal Andhra Pradesh and Konkan & Goa.

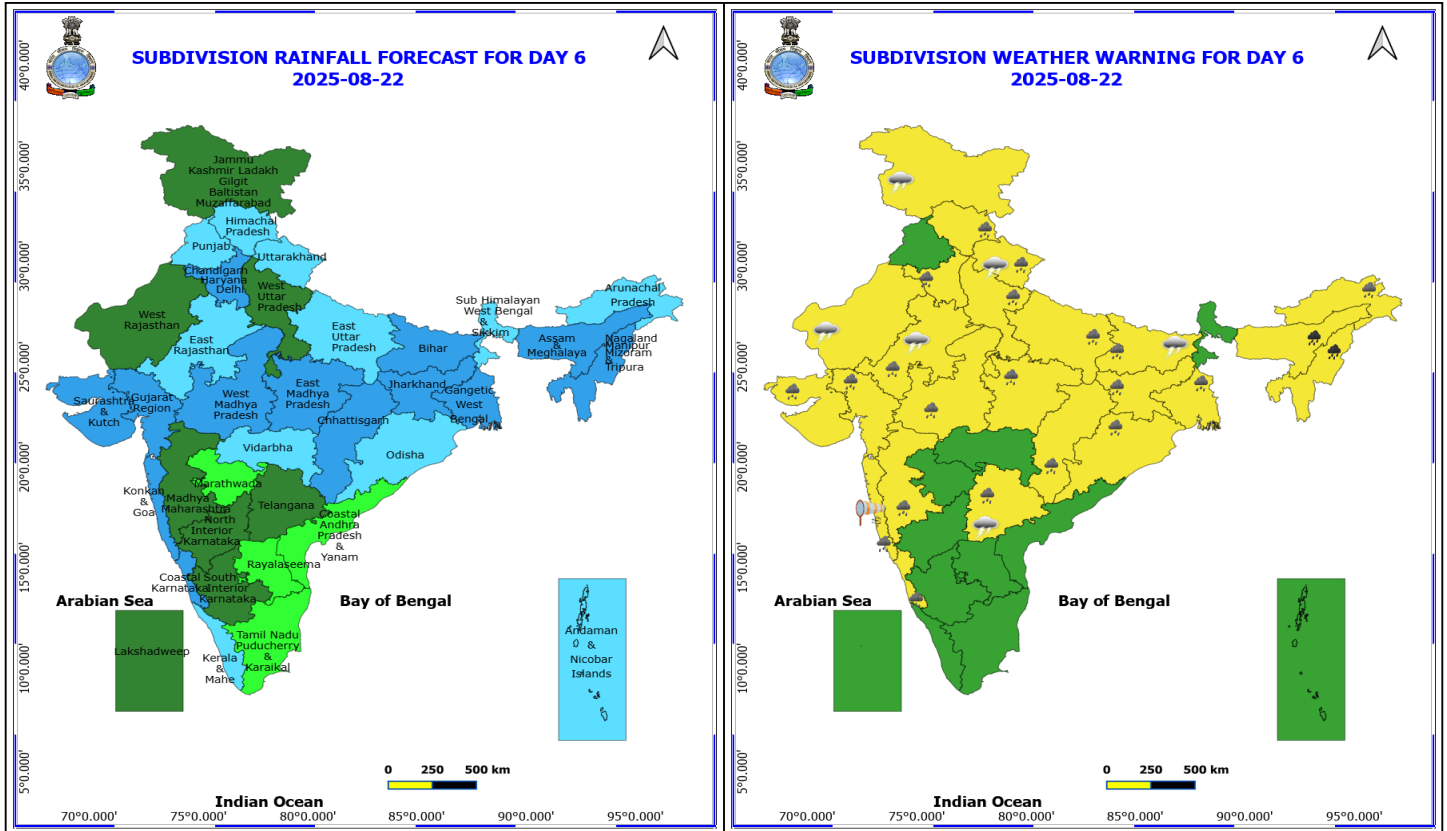
**No Fishermen Warning**

**\*Red color warning does not mean "Red Alert" Red color warning means "Take Action"**

**Forecast and warning for any day is valid from 0830 hours IST of day till 0830 hours IST of next day**

**For more details kindly visit <https://mausam.imd.gov.in> or contact 011-2434-4599**

**(Service to the nation since 1875)**



## 22 August (Day 6)

- ❖ **Heavy to Very Heavy Rainfall** likely at isolated places over Assam & Meghalaya and Nagaland, Manipur, Mizoram and Tripura.
- ❖ **Heavy Rainfall** likely at isolated places over Arunachal Pradesh, Bihar, Chhattisgarh, Coastal Karnataka, East Rajasthan, Gangetic West Bengal, Gujarat State, Haryana, Chandigarh & Delhi, Himachal Pradesh, Jharkhand, Konkan & Goa, Madhya Maharashtra, Madhya Pradesh, Odisha, Telangana, Uttar Pradesh and Uttarakhand.
- ❖ **Thunderstorm accompanied with lightning & gusty winds(30-40kmph)** likely at isolated places over Bihar and Jammu-Kashmir-Ladakh-Gilgit-Baltistan-Muzaffarabad.
- ❖ **Thunderstorm accompanied with Lightning** likely at isolated places over Rajasthan, Telangana and Uttarakhand.
- ❖ **Strong Surface Winds** likely at isolated places over Konkan & Goa.

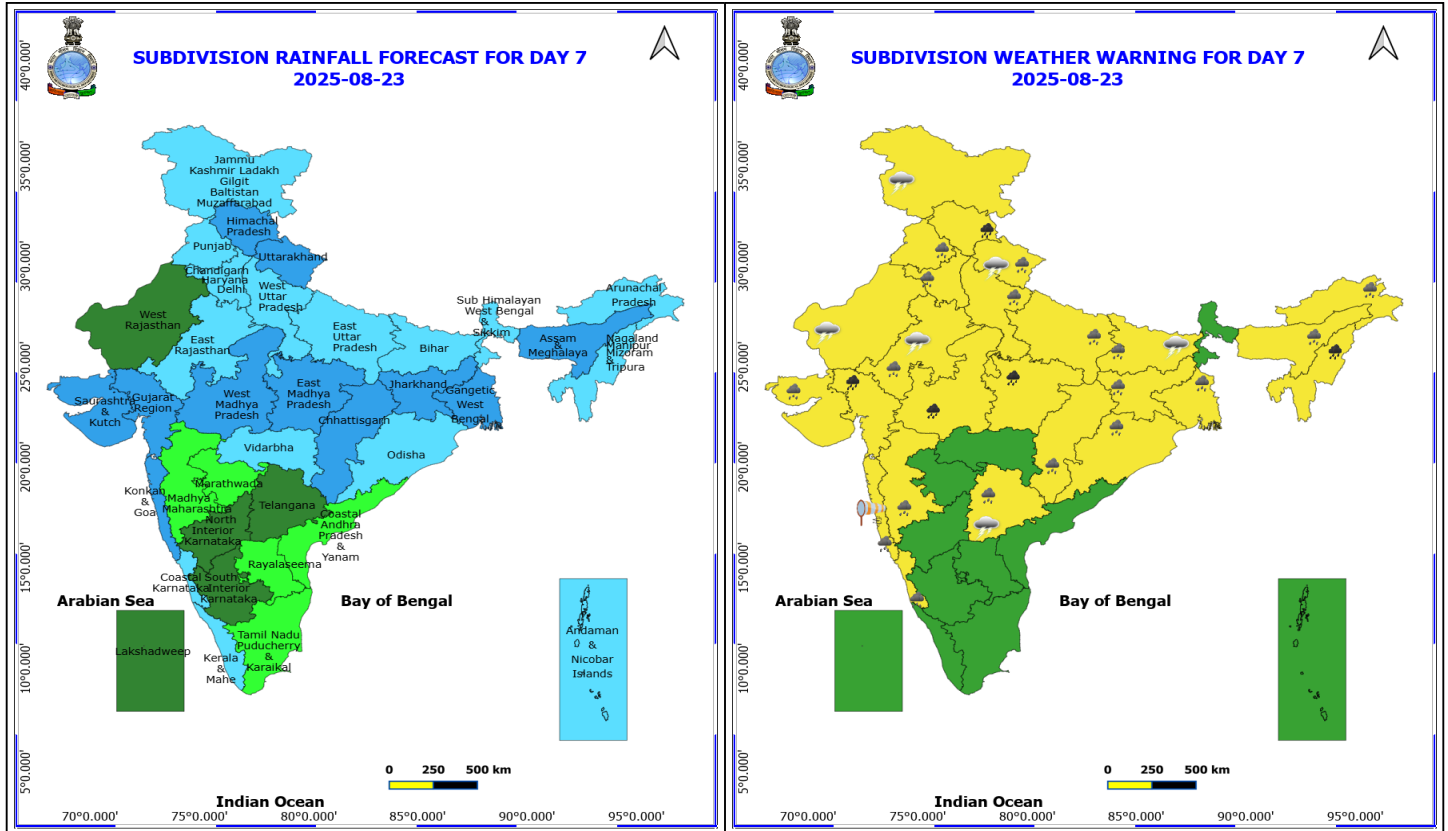
**No Fishermen Warning**

**\*Red color warning does not mean "Red Alert" Red color warning means "Take Action"**

Forecast and warning for any day is valid from 0830 hours IST of day till 0830 hours IST of next day

For more details kindly visit <https://mausam.imd.gov.in> or contact 011-2434-4599

(Service to the nation since 1875)



## 23 August (Day 7)

- ❖ **Heavy to Very Heavy Rainfall** likely at isolated places over Gujarat Region, Himachal Pradesh, Madhya Pradesh and Nagaland, Manipur, Mizoram and Tripura.
- ❖ **Heavy Rainfall** likely at isolated places over Arunachal Pradesh, Assam & Meghalaya, Bihar, Chhattisgarh, Coastal Karnataka, East Rajasthan, Gangetic West Bengal, Haryana, Chandigarh & Delhi, Jharkhand, Konkan & Goa, Madhya Maharashtra, Odisha, Punjab, Saurashtra & Kutch, Telangana, Uttar Pradesh and Uttarakhand.
- ❖ **Thunderstorm accompanied with lightning & gusty winds(30-40kmph)** likely at isolated places over Bihar and Jammu-Kashmir-Ladakh-Gilgit-Baltistan-Muzaffarabad.
- ❖ **Thunderstorm accompanied with Lightning** likely at isolated places over Rajasthan, Telangana and Uttarakhand.
- ❖ **Strong Surface Winds** likely at isolated places over Konkan & Goa.

**No Fishermen Warning**

## Flash Flood Warnings

### 24 hours Outlook for the Flash Flood Risk (FFR) till 1130 IST of 18-08-2025 :

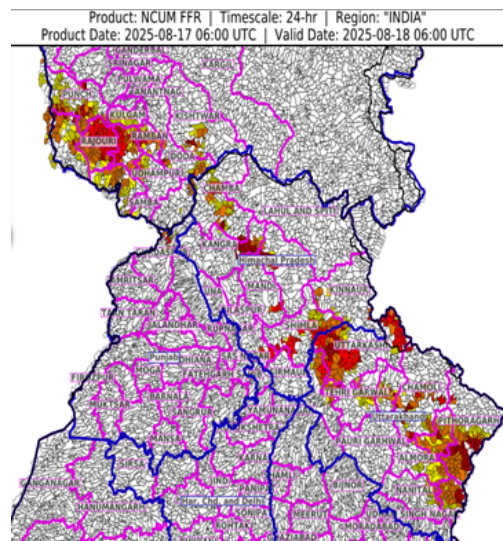
**Moderate flash flood risk** likely over few watersheds & neighbourhoods of following Met Sub-divisions during next 24 hours.

**Himachal Pradesh** - Chamba, Kangra, Kinnaur, Mandi, Shimla and Solan districts.

**Jammu & Kashmir & Ladakh** - Anantnag, Doda, Jammu, Kathua, Kistwar, Kulgam, Punch, Rajouri, Ramban, Riasi, Samba, Udhampur and Mirpur districts.

**Uttarakhand** - Almora, Bageshwar, Chamoli, Champawat, Dehradun, Nanital, Pithoragarh, Rudraprayag, Tehri Garwal and Uttarkashi districts.

Surface runoff/ Inundation may occur at some fully saturated soils & low-lying areas over Area of Concern (AoC) as shown in map due to expected rainfall occurrence in next 24 hours



### 24 hours Outlook for the Flash Flood Risk (FFR) till 1130 IST of 18-08-2025 :

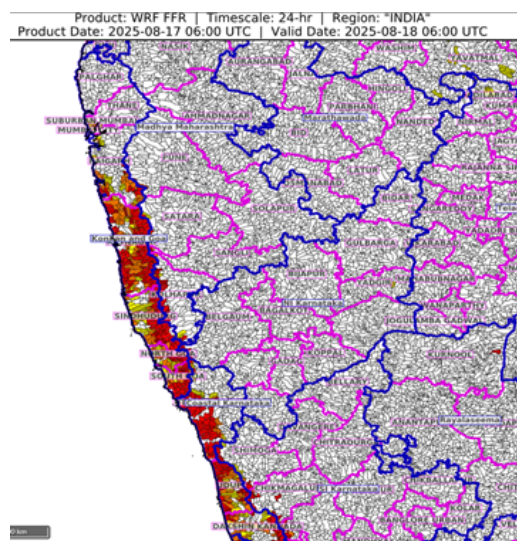
**Moderate flash flood risk** likely over few watersheds & neighbourhoods of following Met Sub-divisions during next 24 hours.

**Himachal Pradesh** - Chamba, Kangra, Kinnaur, Mandi, Shimla and Solan districts.

**Jammu & Kashmir & Ladakh** - Anantnag, Doda, Jammu, Kathua, Kistwar, Kulgam, Punch, Rajouri, Ramban, Riasi, Samba, Udhampur and Mirpur districts.

**Uttarakhand** - Almora, Bageshwar, Chamoli, Champawat, Dehradun, Nanital, Pithoragarh, Rudraprayag, Tehri Garwal and Uttarkashi districts.

Surface runoff/ Inundation may occur at some fully saturated soils & low-lying areas over Area of Concern (AoC) as shown in map due to expected rainfall occurrence in next 24 hours



**\*Red color warning does not mean "Red Alert" Red color warning means "Take Action"**

Forecast and warning for any day is valid from 0830 hours IST of day till 0830 hours IST of next day

For more details kindly visit <https://mausam.imd.gov.in> or contact 011-2434-4599

(Service to the nation since 1875)



# Table-1

## 7 Days Rainfall Forecast

S.No.	Subdivision	17- Aug	18- Aug	19- Aug	20- Aug	21- Aug	22- Aug	23- Aug
		Day 1	Day 2	Day 3	Day 4	Day 5	Day 6	Day 7
1	ANDAMAN & NICOBAR ISLANDS	WS	WS	WS	WS	FWS	FWS	FWS
2	ARUNACHAL PRADESH	SCT	SCT	SCT	FWS	FWS	FWS	FWS
3	ASSAM & MEHGHALAYA	FWS	FWS	FWS	WS	WS	WS	WS
4	N. M. M. & T.	FWS	FWS	FWS	WS	WS	WS	FWS
5	S.H. WEST BENGAL & SIKKIM	WS	FWS	FWS	FWS	WS	FWS	FWS
6	GANGETIC WEST BENGAL	FWS	FWS	FWS	FWS	WS	WS	WS
7	ODISHA	WS	WS	WS	FWS	FWS	FWS	FWS
8	JHARKHAND	FWS	FWS	FWS	FWS	WS	WS	WS
9	BIHAR	SCT	SCT	SCT	FWS	WS	WS	FWS
10	EAST UTTAR PRADESH	ISOL	ISOL	ISOL	ISOL	SCT	FWS	FWS
11	WEST UTTAR PRADESH	ISOL	SCT	SCT	SCT	SCT	SCT	FWS
12	UTTARAKHAND	WS	FWS	FWS	FWS	FWS	FWS	WS
13	HARYANA, CHD & DELHI	FWS	SCT	SCT	SCT	SCT	WS	FWS
14	PUNJAB	SCT	SCT	SCT	ISOL	ISOL	FWS	FWS
15	HIMACHAL PRADESH	WS	FWS	FWS	SCT	SCT	FWS	WS
16	JAMMU AND KASHMIR AND LADAKH	FWS	WS	WS	ISOL	ISOL	SCT	FWS
17	WEST RAJASTHAN	ISOL	ISOL	ISOL	ISOL	SCT	SCT	SCT
18	EAST RAJASTHAN	SCT	FWS	FWS	FWS	FWS	FWS	FWS
19	WEST MADHYA PRADESH	WS	WS	FWS	FWS	FWS	WS	WS
20	EAST MADHYA PRADESH	FWS	FWS	FWS	FWS	WS	WS	WS
21	GUJRAT REGION	WS	WS	WS	WS	WS	WS	WS
22	SAURASHTRA & KUTCH	WS	WS	WS	WS	WS	WS	WS
23	KONKAN & GOA	WS	WS	WS	WS	WS	WS	WS
24	MADHYA MAHARASHTRA	FWS	WS	FWS	FWS	SCT	SCT	ISOL
25	MARATHWADA	FWS	WS	FWS	SCT	ISOL	ISOL	ISOL
26	VIDARBHA	WS	WS	WS	WS	FWS	FWS	FWS
27	CHATTISGARH	FWS	FWS	SCT	SCT	FWS	WS	WS
28	COASTAL ANDHRA PRADESH	WS	WS	FWS	SCT	SCT	ISOL	ISOL
29	TELANGANA	WS	WS	WS	SCT	SCT	SCT	SCT
30	RAYALASEEMA	WS	WS	SCT	ISOL	ISOL	ISOL	ISOL
31	TAMILNADU & PUDUCHERRY	SCT	ISOL	ISOL	ISOL	ISOL	ISOL	ISOL
32	COSTAL KARNATAKA	WS	WS	WS	WS	WS	WS	FWS
33	NORTH INTERIOR KARNATAKA	WS	WS	WS	FWS	SCT	SCT	SCT
34	SOUTH INTERIOR KARNATAKA	WS	WS	FWS	SCT	SCT	SCT	SCT
35	KERALA	WS	WS	WS	FWS	FWS	FWS	FWS
36	LAKSHDWEAP	WS	WS	FWS	FWS	SCT	SCT	SCT

Legend	Category	%Stations
WS	Widespread/Most Places	76-100
FWS	Fairly Widespread/Many Places	51-75
SCT	Scattered/ A Few Places	26-50
ISOL	Isolated Places	1-25
DRY	No Rain	0

\*Red color warning does not mean "Red Alert" Red color warning means "Take Action"

Forecast and warning for any day is valid from 0830 hours IST of day till 0830 hours IST of next day

For more details kindly visit <https://mausam.imd.gov.in> or contact 011-2434-4599

(Service to the nation since 1875)

Fig. 1: Maximum Temperatures Dated 2025-08-17

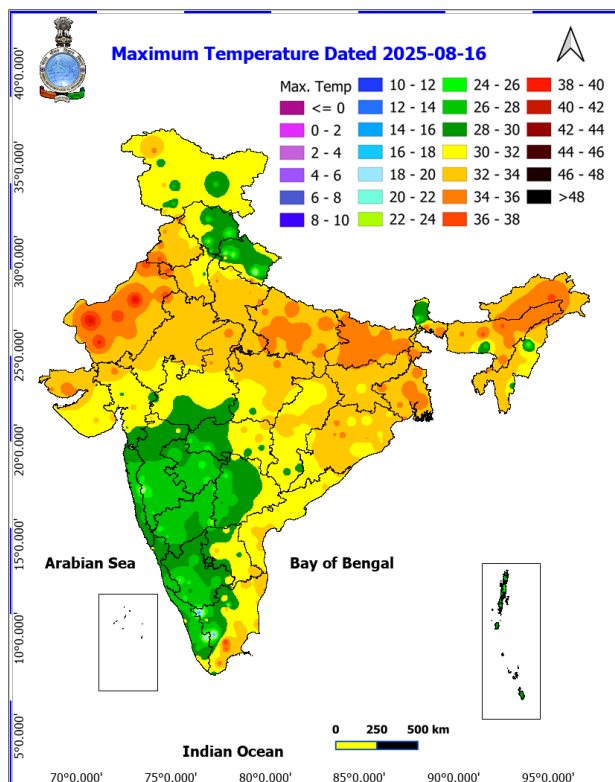


Fig. 2: Departure of Maximum Temp. Dated 2025-08-17

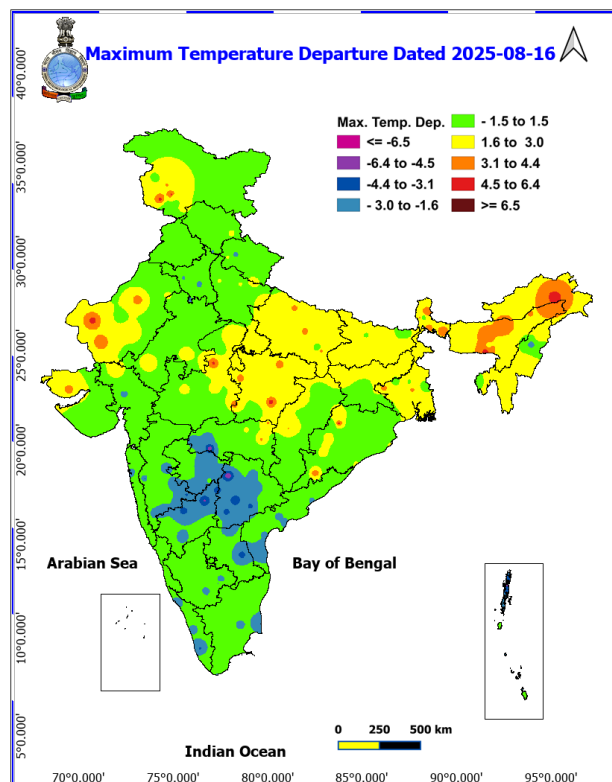


Fig. 3: Minimum Temperatures Dated 2025-08-17

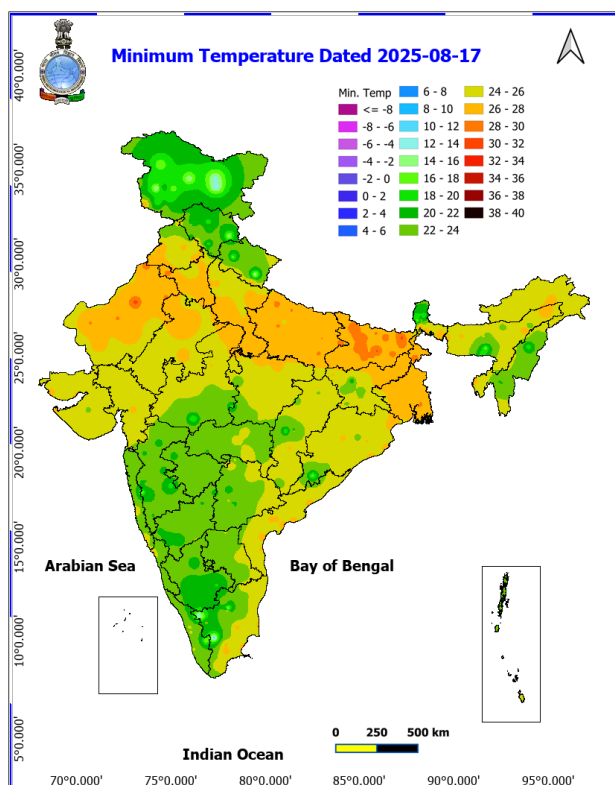
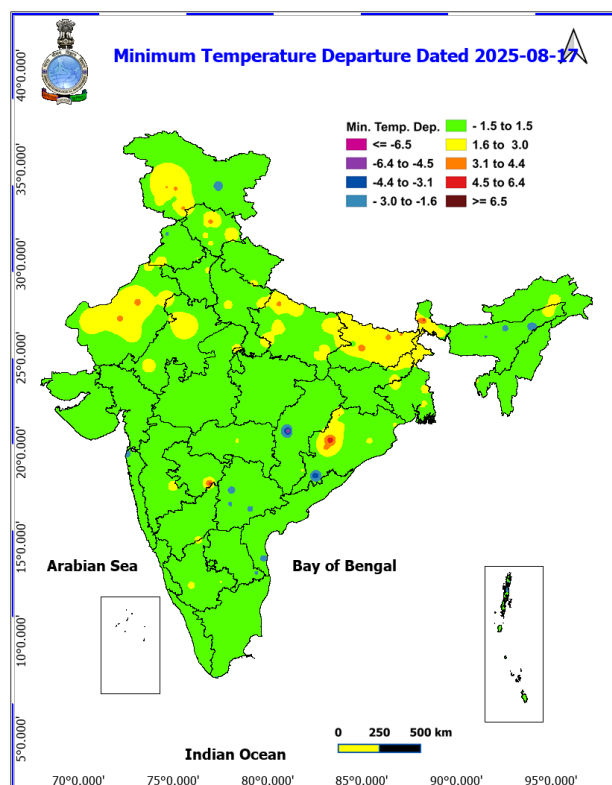
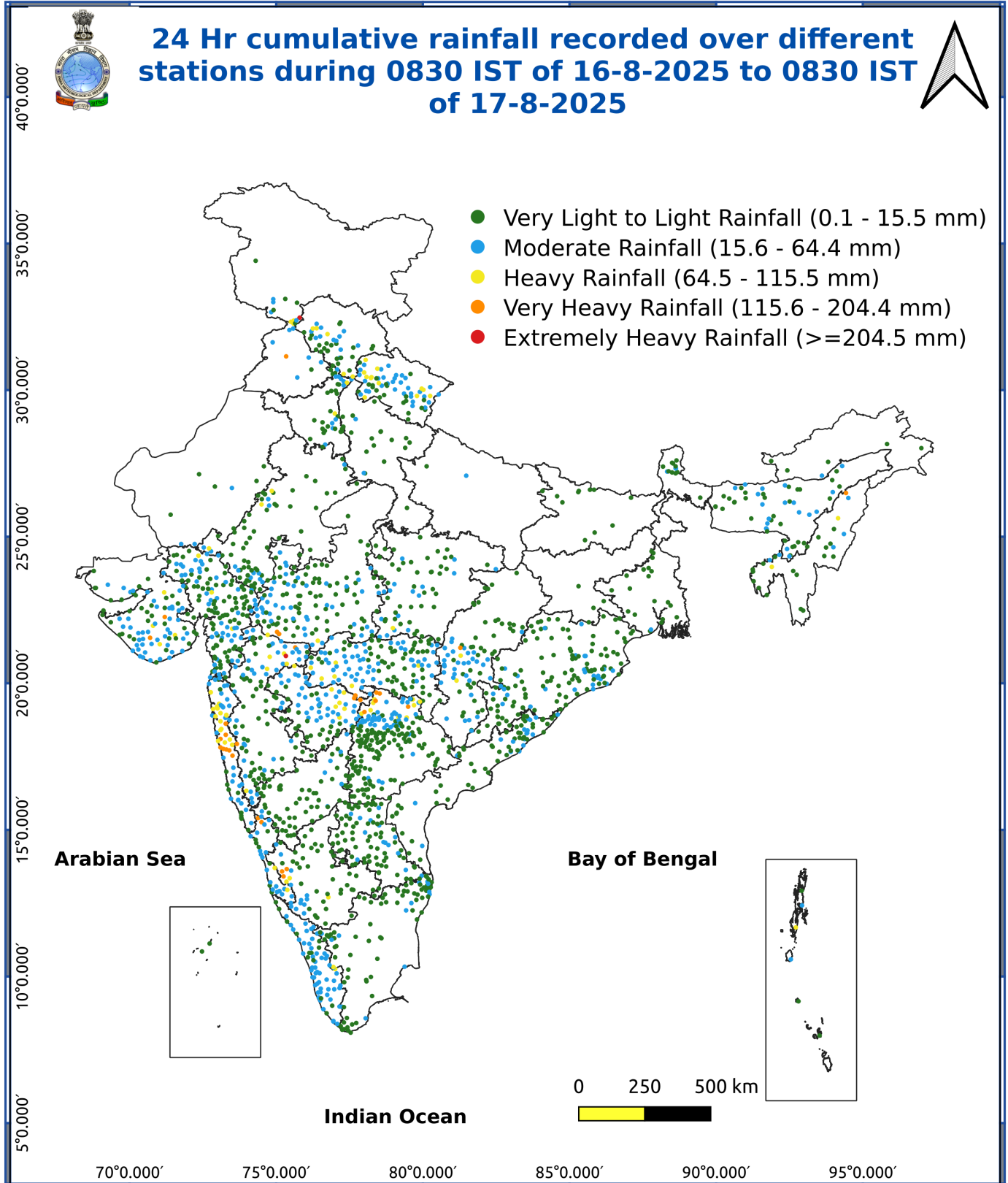


Fig. 4: Departure of Minimum Temp. Dated 2025-08-17





\*Red color warning does not mean "Red Alert" Red color warning means "Take Action"

Forecast and warning for any day is valid from 0830 hours IST of day till 0830 hours IST of next day

For more details kindly visit <https://mausam.imd.gov.in> or contact 011-2434-4599

(Service to the nation since 1875)

### Impact & Action Suggested due to

- **Extremely heavy rainfall** very likely at isolated places over Konkan & Goa; Ghat areas of Madhya Maharashtra during 17<sup>th</sup> -19<sup>th</sup>; Gujarat State on 19<sup>th</sup> & 20<sup>th</sup>; Coastal Karnataka, Coastal Andhra Pradesh & Yanam, South Interior Karnataka on 17<sup>th</sup> & 18<sup>th</sup> August.
- **Very heavy rainfall over** Madhya Maharashtra, Gujarat State during 17<sup>th</sup> -21<sup>st</sup>, Konkan (including Mumbai) & Goa, Coastal Karnataka during 17<sup>th</sup> -20<sup>th</sup>; Marathwada on 17<sup>th</sup> & 18<sup>th</sup>; Kerala & Mahe on 18<sup>th</sup>; Rayalaseema Vidarbha, Chhattisgarh, Odisha on 17<sup>th</sup> & 18<sup>th</sup>; Telangana, Interior Karnataka on 17<sup>th</sup> - 19<sup>th</sup>; West Madhya Pradesh on 17<sup>th</sup>, 18<sup>th</sup>, 22<sup>nd</sup> & 23<sup>rd</sup>; East Madhya Pradesh on 23<sup>rd</sup>; Jammu-Kashmir-Ladakh-Gilgit-Baltistan-Muzaffarabad, Uttarakhand, Punjab, Haryana Chandigarh & Delhi on 17<sup>th</sup>; Himachal Pradesh on 17<sup>th</sup> & 23<sup>rd</sup>; East Rajasthan on 20<sup>th</sup>; Arunachal Pradesh on 20<sup>th</sup> & 21<sup>st</sup>; Nagaland, Manipur, Mizoram & Tripura, Assam & Meghalaya during 20<sup>th</sup>-23<sup>rd</sup> August.
- 

### Impact Expected

- Localized Flooding of roads, water logging in low lying areas and closure of underpasses mainly in urban areas of the above region.
- Occasional reduction in visibility due to heavy rainfall.
- Disruption of traffic in major cities due to water logging in roads leading to increased travel time.
- Minor damage to kutcha roads.
- Possibilities of damage to vulnerable structure.
- Localized Landslides/Mudslides/landslips/mudslips/landsinks/mudsinks.
- Damage to horticulture and standing crops in some areas due to inundation.
- It may lead to riverine flooding in some river catchments (for riverine flooding please visit Web page of CWC)

### Action Suggested

- Check for traffic congestion on your route before leaving for your destination.
- Follow any traffic advisories that are issued in this regard.
- Avoid going to areas that face the water logging problems often.
- Avoid staying in vulnerable structure.

### Agromet advisories for various parts of the country

#### Agromet advisories for likely impact of Heavy / Heavy to Very Heavy Rainfall

In **Maharashtra**, make arrangements to drain out excess water from rice fields maintaining 2.5 to 5 cm water level in **Konkan** and **ghat areas** of **Madhya Maharashtra**. In **Marathwada**, harvest matured green gram and keep the harvested produce in safer places. To prevent waterlogging, make provision for draining out excess water from fields of finger millet, turmeric, groundnut, vegetables and fruit orchards in **Konkan**; maize, groundnut, soybean, vegetables and fruit orchards in **ghat areas** of **Madhya Maharashtra**; groundnut, black gram, green gram, soybean, cotton, pigeon pea, pearl millet, turmeric, sugarcane, vegetables and fruit orchards in **Marathwada**; soybean and cotton in **West Vidarbha** and rice, soybean, cotton, pigeon pea, vegetables and fruit orchards in **East Vidarbha**.

In **Gujarat**, make arrangements to drain out excess water from fields of rice, sugarcane, vegetables and tuber crops in **South Gujarat Heavy Rainfall Zone**; rice, cotton, sugarcane and pigeon pea in **South Gujarat Zone**; groundnut, cotton, soybean, black gram, green gram, sesame and pigeon pea in **South Saurashtra Zone**; groundnut, cotton and sesame in **North Saurashtra Zone** and rice, cotton, green gram, black gram, pigeon pea, pearl millet and vegetables in **Bhal and Coastal Zone**.

In **Madhya Pradesh**, provide adequate drainage in fields of maize, soybean, cotton and vegetables in **Satpura Plateau Zone**; soybean, maize and vegetables in **Malwa Plateau Zone**; rice, soybean, maize, sugarcane and vegetables in **Central Narmada Valley Zone**; soybean, pigeon pea, cotton and vegetables in **Nimar Valley Zone** and

\*Red color warning does not mean "Red Alert" Red color warning means "Take Action"

Forecast and warning for any day is valid from 0830 hours IST of day till 0830 hours IST of next day

For more details kindly visit <https://mausam.imd.gov.in> or contact 011-2434-4599

(Service to the nation since 1875)

maize, soybean, black gram, cotton, and pigeon pea in **Vindhyan Plateau Zone**.

In **Chhattisgarh**, make arrangements to drain out excess water from fields of *kharif* maize, rice, minor millets, pulses and vegetables in **Bastar Plateau Zone**.

In **Telangana**, drain out excess water from fields of rice, cotton, maize, soybean, pigeon pea, turmeric and vegetables in **Northern Telangana Zone** and rice, cotton, soybean, vegetables and vegetable nurseries in **Southern Telangana Zone**.

In **Andhra Pradesh**, make arrangements to drain out excess water from fields of maize, cotton, sugarcane, rice, mesta, red gram, green gram, black gram and groundnut in **North Coastal Zone** and rice, maize and vegetable fields in **High Altitude Tribal Zone**.

In **Karnataka**, provide adequate drainage facilities in rice fields and plantations of arecanut and banana in **Coastal Zone**; fields of rice, maize, cotton, ginger and plantations of arecanut in **Hill Zone** and fields of rice, maize and plantations of arecanut and coconut in **Southern Transition Zone**.

In **Kerala**, provide adequate drainage in fields of rice, coconut, banana and ginger. Provide support to banana plantations. Make the vegetable pandals stronger.

In **Uttarakhand**, maintain proper drainage channels in fields of green gram, black gram, sugarcane, groundnut, sesame and vegetables in **Bhabar and Tarai Zone** and soybean, maize, pulses, finger millet, ginger, vegetable fields and fruit orchards in **Hill Zone**. In **Sub Humid Sub Tropic Zone**, postpone sowing of green gram till cessation of heavy rains. Ensure drainage of excess water from fields of barnyard millet, finger millet and already sown green gram.

#### **Livestock / Fishery**

Keep the animals inside the shed during heavy rainfall and provide them balanced feed.

Store feed and fodder in a safe place to prevent spoilage.

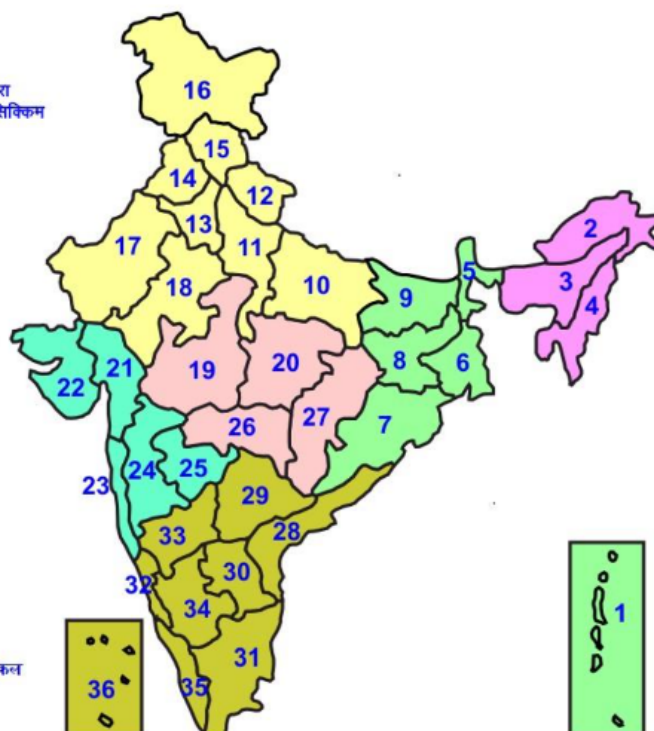
Construct an outlet with proper netting around the ponds to drain out excess water, thereby preventing fish from escaping in case of overflow.

#### **Agromet advisories for likely impact of Thunderstorm / Gusty Winds / Squally Winds**

Provide mechanical support to horticultural crops and staking or support to vegetables and young fruit plants / fruit-bearing plants to avoid lodging due to strong winds.

## LEGENDS

- 1 अंडमान और निकोबार द्वीप समुह
- 2 अरुणाचल प्रदेश
- 3 असम और मेघालय
- 4 नागालैंड मनीपुर मीजोरम और त्रिपुरा
- 5 उप हिमालय पश्चिम बंगाल एवं सिक्किम
- 6 पश्चिम बंगाल
- 7 ओडिसा
- 8 झारखंड
- 9 बिहार
- 10 पूर्वी उत्तर प्रदेश
- 11 पश्चिम उत्तर प्रदेश
- 12 उत्तराखंड
- 13 हरियाणा चंडीगढ़ एवं दिल्ली
- 14 पंजाब
- 15 हिमाचल प्रदेश
- 16 जम्मू एवं कश्मीर एवं लद्दाख
- 17 पश्चिम राजस्थान
- 18 पूर्वी राजस्थान
- 19 पश्चिम मध्य प्रदेश
- 20 पूर्वी मध्य प्रदेश
- 21 गुजरात क्षेत्र
- 22 सौराष्ट्र एवं कच्छ
- 23 कोंकण एवं गोवा
- 24 मध्य महाराष्ट्र
- 25 मराठावाड़ा
- 26 विदर्भ
- 27 छत्तीसगढ़
- 28 तटीय आंध्र प्रदेश एवं यनम
- 29 तेलंगाना
- 30 रायलसीमा
- 31 तमिलनाडु, पुदुचेरी एवं कराईकल
- 32 तटिय कर्नाटक
- 33 आंतरिक उत्तरी कर्नाटक
- 34 आंतरिक दक्षिणी कर्नाटक
- 35 केरल एवं माहे
- 36 लक्षद्वीप



1. Andaman & Nicobar Islands
2. Arunachal Pradesh
3. Assam & Meghalaya
4. Nagaland, Manipur, Mizoram & Tripura
5. Sub-Himalayan West Bengal & Sikkim
6. Gangetic West Bengal
7. Orissa
8. Jharkhand
9. Bihar
10. East Uttar Pradesh
11. West Uttar Pradesh
12. Uttarakhand
13. Haryana, Chd & Delhi
14. Punjab
15. Himachal Pradesh
16. Jammu & Kashmir and Ladakh
17. West Rajasthan
18. East Rajasthan
19. West Madhya Pradesh
20. East Madhya Pradesh
21. Gujarat
22. Saurashtra
23. Konkan & Goa
24. Madhya Maharashtra
25. Marathawada
26. Vidharbha
27. Chhattisgarh
28. Coastal Andhra Pradesh & Yanam
29. Telangana
30. Rayalaseema
31. Tamilnadu, Puducherry & Karaikal
32. Coastal Karnataka
33. North Interior Karnataka
34. South Interior Karnataka
35. Kerala & Mahe
36. Lakshadweep

## SPATIAL DISTRIBUTION (% of Stations reporting)













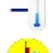




% Stations	Category	% Stations	Category
76-100	Widespread (WS/Most Places)	26-50	Scattered (SCT/ A Few Places)
51-75	Fairly Widespread (FWS/ Many Places)	1-25	Isolated (ISOL)

## Subdivision Colour

- NO WARNING
- WATCH (BE UPDATED)
- ALERT (BE PREPARED TO TAKE ACTION)
- WARNING (TAKE ACTION)

## Probabilistic Forecast

Terms	Probability of Occurrence (%)
Unlikely	< 25
Likely	25 - 50
Very Likely	50 - 75
Most Likely	> 75

-  Heavy Rain
-  Very Heavy Rain
-  Extremely Heavy Rain
-  Heavy Snow
-  Thunderstorm & Lightning
-  Hailstorm
-  Dust Storm
-  Dust Raising Winds
-  Strong surface winds
-  Heat Wave
-  Hot Day
-  Warm Night
-  Cold Wave
-  Cold Day
-  Ground Frost
-  FOG Fog
-  Hot & Humid

\*Red color warning does not mean "Red Alert" Red color warning means "Take Action"

Forecast and warning for any day is valid from 0830 hours IST of day till 0830 hours IST of next day

For more details kindly visit <https://mausam.imd.gov.in> or contact 011-2434-4599

(Service to the nation since 1875)

## LEGENDS

### WARNING

<b>WARNING (TAKE ACTION)</b>
<b>ALERT (BE PREPARED)</b>
<b>WATCH (BE UPDATED)</b>
<b>NO WARNING (NO ACTION)</b>

### Probabilistic Forecast

Terms	Probability of Occurrence (%)
Unlikely	< 25
Likely	25 - 50
Very Likely	50 - 75
Most Likely	> 75



Heavy: 64.5 to 115.5 mm/cm \*  
Very Heavy: 115.6 to 204.4 mm/cm \*  
Extremely Heavy: > 204.4 mm/cm \*



When maximum temperature of a station reaches  $\geq 40^{\circ}\text{C}$  for plains and  $\geq 30^{\circ}\text{C}$  for hilly regions  
(a) Based on Departure from normal

Heat Wave: Maximum Temperature Departure from normal  $4.5^{\circ}\text{C}$  to  $6.4^{\circ}\text{C}$ .  
Severe Heat Wave: Maximum Temperature Departure from normal  $\geq 6.5^{\circ}\text{C}$

(b). Based on Actual maximum temperature

Heat Wave: When actual maximum temperature  $\geq 45^{\circ}\text{C}$ .  
Severe Heat Wave: When actual maximum temperature  $\geq 47^{\circ}\text{C}$

(c). Criteria for heat wave for coastal stations

When maximum temperature departure is  $> 4.5^{\circ}\text{C}$  from normal. Heat Wave may be described provided maximum temperature  $\geq 37^{\circ}\text{C}$



When maximum temperature remains  $40^{\circ}\text{C}$

Warm Night: When minimum temperature departure  $4.5^{\circ}\text{C}$  to  $6.4^{\circ}\text{C}$ .  
Severe Warm Night: When minimum temperature departure  $> 6.4^{\circ}\text{C}$ .



When minimum temperature of a station  $\leq 10^{\circ}\text{C}$  for plains and  $\leq 0^{\circ}\text{C}$  for hilly regions.

(a). Based on departure

Cold Wave: Minimum Temperature Departure from normal  $-4.5^{\circ}\text{C}$  to  $-6.4^{\circ}\text{C}$ .  
Severe Cold Wave: Minimum Temperature Departure from normal  $\leq -6.5^{\circ}\text{C}$

(b) Based on actual Minimum Temperature (for Plains only)

Cold Wave: When Minimum Temperature is  $\leq 4.0^{\circ}\text{C}$   
Severe Cold Wave: When Minimum Temperature is  $\leq 2.0^{\circ}\text{C}$

(c) For Coastal Stations

When Minimum Temperature departure is  $\leq -4.5^{\circ}\text{C}$  & actual Minimum Temperature is  $\leq 15^{\circ}\text{C}$



When minimum temperature of a station  $\leq 10^{\circ}\text{C}$  for plains and  $\leq 0^{\circ}\text{C}$  for hilly regions  
Based on departure

Cold Day: Maximum Temperature Departure from normal  $-4.5^{\circ}\text{C}$  to  $-6.4^{\circ}\text{C}$ .  
Severe Cold Day: Maximum Temperature Departure from normal  $\leq -6.5^{\circ}\text{C}$



Phenomenon of small droplets suspended in air and the horizontal visibility  $< 1\text{km}$

Moderate Fog: When the visibility between 500-200 metres  
Dense Fog: when the visibility between 50-200 metres  
Very Dense Fog: when the visibility  $< 50$  metres



Sudden electrical discharges manifested by a flash of light (Lightning) and a sharp rumbling sound (thunder)



An ensemble of particles of dust or sand energetically lifted to great heights by a strong and turbulent wind.



Ice deposits on ground

Air temperature  $\leq 4^{\circ}\text{C}$  (over Plains)



A strong wind that rises suddenly, lasts for at least 1 minute.

Moderate: Wind speed 52-61 kmph  
Severe: Wind speed 62-87 kmph  
Very Severe: Wind speed  $> 87$  kmph



Effect of various waves in the sea over specific area

Rough to very rough: Wind speed 41-62 kmph (22-33 knots) & Wave height 2.5-6 metre  
High to very high: Wind speed 63-117 kmph (34-63 knots) & Wave height 6-14 metre  
Phenomenal: Wind speed  $> 117$  kmph ( $> 63$  knots) & Wave height  $> 14$  metre



Cyclonic Storm: Wind speed 62-87 kmph (34-47 knots)

Severe Cyclonic Storm: Wind speed 88-117 kmph (48-63 knots)  
Very Severe Cyclonic Storm: Wind speed 118-165 kmph (64-89 knots)  
Extremely Severe Cyclonic Storm: Wind speed 166-220 kmph (90-119 knots)  
Super Cyclone Storm: Wind speed  $> 220$  kmph ( $> 119$  knots)

\*Red color warning does not mean "Red Alert" Red color warning means "Take Action"

Forecast and warning for any day is valid from 0830 hours IST of day till 0830 hours IST of next day

For more details kindly visit <https://mausam.imd.gov.in> or contact 011-2434-4599

(Service to the nation since 1875)