

2026-03-17

Time of Issue: 13:39:00 hours IST
(Mid-Day)

ALL INDIA WEATHER SUMMARY AND FORECAST BULLETIN

Significant Weather Features

Weather Systems, Forecast and Warnings

Northwest India:

Scattered light to moderate rainfall/snowfall accompanied with isolated thunderstorm, lightning & gusty winds speed reaching (40-50 kmph) likely to continue over Western Himalayan region on 17th March. Another fresh wet spell with Fairly widespread to widespread light to moderate rainfall/snowfall likely with isolated thunderstorm, lightning & gusty winds speed reaching (40-50 kmph) during 18th-20th March and reduction in intensity thereafter. **Isolated heavyrainfall/snowfall very likely over Jammu-Kashmir-Ladakh-Gilgit-Baltistan-Muzaffarabad and Uttarakhand on 20th & Himachal Pradesh on 19th & 20th March.**

Isolated to Scattered light to moderate rainfall accompanied with isolated thunderstorm, lightning & gusty winds speed reaching (40-50 kmph) likely to continue over the plains of Northwest India on 19th & 20th March.

Thundersquall (wind speed reaching 50-60 kmph gusting to 70 kmph) very likely at isolated places over Uttarakhand on 19th & 20th.

Isolated **Hailstorm** activity likely over Himachal Pradesh on 18th & 19th; Uttarakhand, Punjab, Haryana Chandigarh and Rajasthan on 19th & 20th.

Northeast India:

Fairly widespread to widespread light to moderate rainfall with **thunderstorm & lightning** likely over Northeast India during next 5 days; with **gusty winds speed reaching (30-50 kmph)** over Nagaland, Manipur, Mizoram & Tripura, Arunachal Pradesh and Assam & Meghalaya on 17th & 18th March.

Isolated **heavyrainfall** very likely over Nagaland, Manipur, Mizoram & Tripura, Arunachal Pradesh & Assam & Meghalaya on 17th March.

Isolated **Hailstorm** activity likely over Assam & Meghalaya on 17th March.

East & Central India:

Scattered to fairly widespread light to moderate rainfall with **thunderstorm, lightning & gusty winds speed reaching (30-50 kmph)** likely over West Bengal & Sikkim 17th -21st March. Isolated **heavyrainfall** very likely over Sub-Himalayan West Bengal & Sikkim on 20th March.

Isolated to Scattered light to moderate rainfall with **thunderstorm, lightning & gusty winds speed reaching (30-50 kmph)** likely over Madhya Pradesh during 18th -21st, Vidarbha during 17th to 20th, Gangetic West Bengal, Bihar, Jharkhand, Odisha during 17th -21st March. **Thunderstorm, lightning & squally winds speed reaching (50-60 gusting to 70 kmph)** likely over Sub-Himalayan West Bengal & Sikkim on 20th, Gangetic West Bengal & Odisha on 20th & 21st March.

Isolated **Hailstorm** activity likely over Madhya Pradesh on 20th; Vidarbha on 18th; Chhattisgarh on 18th & 19th; West Bengal & Sikkim and Odisha on 20th & 21st March.

South Peninsular India:

Isolated to Scattered light to moderate rainfall with **thunderstorm, lightning & gusty winds speed reaching (30-50 kmph)** likely over Telangana and Interior Karnataka during 17th-21st; Coastal Andhra Pradesh & Yanam during 17th

***Red color warning does not mean "Red Alert" Red color warning means "Take Action"**

Forecast and warning for any day is valid from 0830 hours IST of day till 0830 hours IST of next day

For more details kindly visit <https://mausam.imd.gov.in> or contact 011-2434-4599

(Service to the nation since 1875)

-20th; Rayalaseema on 17th & 18th; Kerala & Mahe during 17th -19th with lightening Tamil Nadu, Puducherry & Karaikal and Coastal Karnataka during 17th -21st March.

West India:

Isolated light/moderate rainfall with **thunderstorm & lightning & gusty winds speed reaching (30-50 kmph)** likely over Madhya Maharashtra, Marathwada during 17th -19th Gujarat State on 18th & 19th and with thunderstorm & lightning over Konkan & Goa on 18th & 19th March.

Forecast of maximum/day temperatures:

Gradual rise in maximum temperatures by 2-3°C likely over Northwest India during next 2 days; gradual fall by 5-7°C during subsequent 3 days & gradual rise in temperatures by 3-5°C thereafter.

Gradual fall in maximum temperatures by 3-5°C likely over Central India during next 4 days & gradual rise in maximum temperatures by 2-4°C during subsequent 3 days.

No significant change in maximum temperatures likely over East India during next 4 days and gradual fall by 2-3°C during subsequent 3 days.

Gradual rise in maximum temperature by 3-4°C likely over Northeast India during next 3 days and no significant change during subsequent 4 days.

No significant change in maximum temperatures likely over Maharashtra during next 24 hours and gradual fall by 2-3°C during subsequent 3 days; no significant change thereafter.

Gradual fall in maximum temperature by 2-3°C likely over Gujarat during next 3 days and no significant change during subsequent 4 days.

Gradual fall in maximum temperature by 2-4°C likely over South Peninsular India during next 5 days and no significant change during subsequent 2 days.

Main Weather Observations:

- **Rainfall distribution** (from 0830 hours IST of yesterday to 0830 hours IST of today): **at most places** over Assam & Meghalaya and Himachal Pradesh; **at many places** over Arunachal Pradesh, Nagaland, Manipur, Mizoram & Tripura, Sub Himalayan West Bengal & Sikkim, Gangetic West Bengal and Jammu-Kashmir-Ladakh-Gilgit-Baltistan-Muzaffarabad; **at a few places** over Odisha, Punjab, Coastal Karnataka, South Interior Karnataka and Kerala & Mahe; **at isolated places** over Jharkhand, Bihar, Uttarakhand, Haryana-Chandigarh-Delhi, Coastal Andhra Pradesh & Yanam, Telangana, Rayalaseema, Tamil Nadu, Puducherry & Karaikal and North Interior Karnataka; **Dry** over rest of the country.

Significant rainfall recorded(in cm) (from 0830 hours IST of yesterday to 0830 hours IST of today):

Arunachal Pradesh: Tuting (dist Upper Siang) 7; Pasighat AP (dist East Siang), Miao (dist Changlang) 3 Each; Namsai (dist Lohit) 2; Tezu (dist Lohit), Mukto ARG (dist Tawang) 1 Each; **Assam & Meghalaya:** Cherrapunji (dist East Khasi Hills), Silchar (dist Cachar) 7 Each; Cherrapunji(rkm) (dist East Khasi Hills), Matijuri ARG (dist Hailakandi) 6 Each; Lakhimpur ARG (dist Cachar) 5; Haflong (dist Dima Hasao), Haflong AWS (dist Dima Hasao) 4 Each; Badatighat (dist Lakhimpur), Shillong AWS (dist East Khasi Hills), Amraghat ARG (dist Cachar) 3 Each; Chaparmukh (dist Nagaon), Melabazar/Matunga (dist Nalbari), Nongstein (dist West Khasi Hills), Sualkuchi ARG (dist Kamrup (rural)) 2 Each; Shillong CSO (dist East Khasi Hills), Dhubri CWC (dist Dhubri), D/Mohanbari AP (dist Dibrugarh), Goalpara PTO (dist Goalpara), Shella (dist East Khasi Hills), Goibargaon (dist Baksa), Rangia (dist Kamrup (rural)), Tikrikilla (dist West Garo Hills), Bahalpur (dist Dhubri), Barapani (dist Ri Bhoi), Majbat (dist Udalguri), Beki Mathungari (dist Barpeta), Margherita (dist Tinsukia), Numaligarh (dist Golaghat), Bokajan (dist Karbi Anglong), Golaghat CWC (dist Golaghat), Lumding (dist Hojai), Drf (dist Baksa), N.lakhimpur/Lilabari (dist Lakhimpur), Tamulpur (dist Tamulpur), Mohanbari AWS (dist Dibrugarh), Diphu AWS (dist Karbi Anglong), Dhemaaji (dist Dhemaaji), Mongaldoi (dist Darrang), Barpathar (dist Golaghat), Udaipur (dist Tinsukia), Guwahati ARG (dist Kamrup Metropolitan), Sonari ARG (dist Charaideo), Mawkyrwat (dist South West Khasi Hills), Khetri ARG (dist Kamrup (rural)), Dalgaon ARG (dist Darrang), Dhupdhara ARG (dist Goalpara), Hangrabari ARG (dist Kamrup Metropolitan), Lumding ARG (dist Hojai), Dhubri IMD (dist Dhubri) 1 Each; **South Interior Karnataka:** Hassan PTO (dist Hassan), Magadi (dist Ramanagara) 5 Each; Davanagere (dist Davangere) 3; T G Halli HMS (dist Bengaluru Urban), B Durga (dist Chitradurga), Kunigal (dist Tumakuru), Channagiri (dist Davangere) 2 Each; Ponnampet PWD (dist Kodagu), Somwarpet (dist Kodagu), Napoklu (dist Kodagu), Nayakanahatty (dist Chitradurga), Nagamangala (dist Mandya), Chitradurga (dist Chitradurga) 1 Each; **Kerala & Mahe:** Vaikkom AWS (dist Kottayam) 5; Karumadi AWS (dist Alapuzha) 4; Panniyoor ARG (dist Cannur) 3; Taliparamba (dist Cannur), Kayamkulam (dist Alapuzha), Cherthala (dist Alapuzha), Kannur Icar AWS (dist Cannur), Ayyankunnu AWS (dist Cannur), Thennala AWS (dist Malappuram) 2 Each; Kanjirappally (dist Kottayam), Mancompu (dist Alapuzha), Piravam (dist Ernakulam), Haripad (dist Alapuzha), Kayamkulam ARG (dist Alapuzha), Kottayam (dist Kottayam), Kannur (dist Cannur), Kunnankulam (dist Thrissur), Idukki (dist Idukki), Thycattussery AWS (dist Alapuzha) 1 Each; **Gangetic West Bengal:** Amta (dist Howrah) 4; Alipore (dist Kolkata), Canning (dist South 24 Parganas), Uluberia (dist Howrah), Midnapore(CWC) (dist West Midnapore), Amfu Kakdwip (dist South 24 Parganas), Jhargram PTO (dist Jhargram), Kalaikunda (laf) (dist West Midnapore) 2 Each; Dum Dum (dist North 24 Parganas), Durgachack (dist East Midnapore), Basirhat(pt) (dist North 24 Parganas), D.p.ghat (dist Jhargram), Diamond Harbour (dist South 24 Parganas), Contai (dist East Midnapore), Mohanpur (dist West Midnapore), Amfu Kharagpur (dist West Midnapore), Bagati (dist Hooghly), Kharidwar (dist Purulia), Lalgargh (dist Jhargram), Mo Saltlake (dist North 24 Parganas) 1 Each; **Nagaland, Manipur, Mizoram & Tripura:** Dharmanagar/panisagar (dist North Tripura), Aizawl (dist Aizawl), Kanchanpur (dist North Tripura) 4 Each; Kailashahar AP (dist Unakoti), Lengpui (dist Aizawl), Chhamonu (dist Dhalai), Imphal AP (dist Imphal East) 3 Each; Kohima (dist Kohima), Ukhrul (dist Ukhrul), Senapati (dist Senapati), Thoubal (dist Thoubal), Kadamtala ARG (dist North Tripura), Churachandpur (dist Churachandpur) 2 Each; Jharnapani (dist Dimapur), Teliamura ARG (dist Khowai), Bishnupur (dist Bishnupur), Chandel (dist Chandel) 1 Each; **Jharkhand:** Gurabandha (dist East Singhbhum) 4; Boram (dist East Singhbhum) 3; Majhgaon (dist West Singhbhum), Musabani (dist East Singhbhum), Baharagora (dist East Singhbhum) 1 Each; **Coastal Karnataka:** Belthangadi (dist Dakshina Kannada) 4; Dharmasthala (dist Dakshina Kannada) 3; **Telangana:** Narsapur (dist Medak), Regode (dist Medak) 3 Each; Domakonda (dist Kamareddy), Ars Narsapur AP (dist Medak) 2 Each; Narayankhed (dist Sangareddy), Bhiknur (dist Kamareddy), Kamareddy (dist Kamareddy), Dindigul (dist M. Malkajgiri), Alladurg (dist Medak), Nawabpetmbn (dist Mahabubnagar) 1 Each; **Tamil Nadu, Puducherry & Karaikal:** Valinokam (dist Ramanathapuram), Shanthi Vijaya School (dist Nilgiris) 3 Each; Nalumukku (dist Tirunelveli), Oothu (dist Tirunelveli) 2 Each; Suler (dist Coimbatore), Peraiyur (dist Madurai),

*Red color warning does not mean "Red Alert" Red color warning means "Take Action"

Forecast and warning for any day is valid from 0830 hours IST of day till 0830 hours IST of next day

For more details kindly visit <https://mausam.imd.gov.in> or contact 011-2434-4599

(Service to the nation since 1875)

Barwood (dist Nilgiris), Kinnakorai (dist Nilgiris) 1 Each; **Jammu-KashmirLadakh-Gilgit-Baltistan-Muzaffarabad:** Bandipora AWS (dist Bandipore) 3; Nowgam (dist Kupwara), Lolab (dist Kupwara), Reasi Kvk AWS (dist Reasi), Bandipora (dist Bandipore) 1 Each; **Himachal Pradesh:** Bhuntar AP (dist Kullu), Jogindarnagar (dist Mandi), Seo Bagh (dist Kullu), Sarahan (dist Shimla), Dharmsala (dist Kangra), Manali (dist Kullu) 3 Each; Nadaun (dist Hamirpur), Palampur (dist Kangra), Mehre (barsar) (dist Hamirpur), Keylong (dist Lahaul & Spiti), Aghar (dist Hamirpur), Bharari (dist Hamirpur), Gohar (dist Mandi), Wangtoo (dist Kinnaur), PTO Gondla (dist Lahaul & Spiti), Kangra AP (dist Kangra), Chhatrari (dist Chamba) 2 Each; Pandoh (dist Mandi), Guler (dist Kangra), Naina Davi (dist Bilaspur), Una (dist Una), Mandi (dist Mandi), Kandaghat (dist Solan), R L Bbmb (dist Bilaspur), Simla (dist Shimla), Dehra Gopipur (dist Kangra), Sunibhaji (dist Shimla), Kukumsheri AWS (dist Lahaul & Spiti), Bilaspur Sadar (dist Bilaspur), Barthin (dist Bilaspur), HMO Hansa (dist Lahaul & Spiti), Chuari (dist Chamba), Sujanpur Tira (dist Hamirpur), Kalpa (dist Kinnaur), Sundarnagar (dist Mandi), Nagrota Surian (dist Kangra) 1 Each; **Odisha:** Soro (dist Balasore), Tensa (dist Sundargarh), Chandua Kuliana (dist Mayurbhanj), Sarasakana (dist Mayurbhanj), Rajgangpur (dist Sundargarh) 3 Each; Pottangi (dist Koraput), Ghatagaon (dist Keonjhar), Sinapali (dist Nawapara), Keonjhar (dist Keonjhar), Garadapur (dist Kendrapara), Jaipur (dist Balasore), Bhadrak (dist Bhadrak), Bangiriposi (dist Mayurbhanj), Bahanga (dist Balasore), Muruda (dist Mayurbhanj), Bijatala (dist Mayurbhanj), Rasagovindapur (dist Mayurbhanj), Boden (dist Nawapara) 2 Each; Samakhunta (dist Mayurbhanj), Laikera (dist Jharsuguda), Joda (dist Keonjhar), Jamsolaghat (dist Mayurbhanj), Nh5 Gobindpur (dist Balasore), Kujanga (dist Jagatsinghpur), Nilgiri (dist Balasore), Banaigarh (dist Sundargarh), Nawana (dist Mayurbhanj), Joshipur (dist Mayurbhanj), Balikuda (dist Jagatsinghpur), Burla (dist Sambalpur), Lahunipara (dist Sundargarh), Balasore (dist Balasore), Gurundia (dist Sundargarh), Remuna (dist Balasore), Swam-patna (dist Keonjhar), Rajghat (dist Balasore), Champua (dist Keonjhar), Chandanpur (dist Mayurbhanj), Betanati (dist Mayurbhanj), Baripada (dist Mayurbhanj), Mandira Dam (dist Sundargarh), Komna (dist Nawapara), Kaptipada (dist Mayurbhanj), Anandpur (dist Keonjhar), Batli (dist Bargarh), Balimundali (dist Mayurbhanj), Deogaon (dist Jharsuguda), Jaleswar (dist Balasore), Bhograi (dist Balasore), Tangarpali (dist Sundargarh), Lathikata (dist Sundargarh), Bandhugaon (dist Koraput), Kirmira (dist Jharsuguda), Khaira (dist Balasore), Naugaon (dist Jagatsinghpur), Mohakalapada (dist Kendrapara), Banspal (dist Keonjhar), Suliapada (dist Mayurbhanj), G B Nagar (dist Mayurbhanj), Bahalda (dist Mayurbhanj), Sukruli (dist Mayurbhanj), Raruana (dist Mayurbhanj), Lephripara (dist Sundargarh), Kutra (dist Sundargarh), Bamra (dist Sambalpur), Rairangpur (dist Mayurbhanj), Oupada (dist Balasore), Khariar (dist Nawapara), Bargarh (dist Bargarh), Marsaghai (dist Kendrapara) 1 Each; **Punjab:** Phangota (dist Pathankot) 2; Tibri (dist Gurdaspur), Shahpur Kandi (dist Pathankot), Ranjit Sagar Dam Site (dist Pathankot), Madhopur (dist Pathankot), Gurdaspur AMFU (dist Gurdaspur), Rasulpur Irr (dist Tarn Taran), Kvk Pathankot AWS (dist Pathankot), Thein Dam AWS (dist Pathankot), Bhakra Dam Nangal AWS (dist Rupnagar), Sri Anandpur Sahib AWS (dist Rupnagar) 1 Each; **Uttarakhand:** Hardwar (dist Hardwar) 2; Uttar Kashi (dist Uttarkashi) 1; **Sub Himalayan West Bengal & Sikkim:** Lachen (dist Mangan) 2; Jalpaiguri (dist Jalpaiguri), Shipgyar (dist Mangan), Singhik (dist Mangan), Suryasen Mahavidyalaya (dist Darjeeling), Denguajhar Tea Garden (dist Jalpaiguri), Ghatia T.e. (dist Jalpaiguri), Maynaguri College (dist Jalpaiguri), Kumargram Tea Estate (dist Alipurduar), Newlands Tea Garden (dist Alipurduar), Sankos Tea Estate (dist Alipurduar) 1 Each; **Royalaseema:** Dharmavaram (dist Sri Sathyasai District) 1; **Bihar:** Chorgharia (dist Kishanganj), Sikti (dist Araria), Tedhagach (dist Kishanganj) 1 Each; **North Interior Karnataka:** Yelburga ARG (dist Koppal), Manthala (dist Bidar) 1 Each.

❖ **Heavy Rainfall observed** (from 0830 hours IST of yesterday to 0830 hours IST of today): **Heavy rain** at isolated places over Arunachal Pradesh and Assam & Meghalaya.

- **Hailstorm** reported at isolated places over West Bengal & Sikkim, Odisha, Jharkhand, Himachal Pradesh, Chhattisgarh
- **Maximum/day temperatures** were in the range (36°C-40°C) over South Rajasthan, Madhya Pradesh, South East Uttar Pradesh, West Jharkhand, Chhattisgarh, Northwest Odisha, Vidarbha, Madhya Maharashtra, Marathwada, Gujrat, North Karnataka, Telangana, Royalaseema, South Tamil Nadu, South Kerala. **Yesterday, the highest maximum temperature of 40.5°C was reported at WASHIM-OBS (MAHARASHTRA), and RAJNANDGAON (CHHATTISGARH).**
- **Maximum Temperatures/day temperatures** were markedly above normal (> 5.1°C) at few places over Uttarakhand; at isolated places over West Uttar Pradesh, East Rajasthan and Chhattisgarh. appreciably above normal (3.1°C to 5.0°C) at few places over East Uttar Pradesh, East Madhya Pradesh and Vidarbha; at isolated places over Sub Himalayan West Bengal & Sikkim, Jharkhand, Bihar, Haryana-Chandigarh-Delhi, West Rajasthan, West Madhya Pradesh, Saurashtra & Kutch, Coastal Andhra Pradesh & Yanam and Tamil Nadu, Puducherry & Karaikal. above normal (1.6°C to 3.0°C) at most places over Marathwada; at few places over Gangetic West Bengal, Gujarat Region and Madhya Maharashtra; at isolated places over Odisha, Konkan

*Red color warning does not mean "Red Alert" Red color warning means "Take Action"

Forecast and warning for any day is valid from 0830 hours IST of day till 0830 hours IST of next day

For more details kindly visit <https://mausam.imd.gov.in> or contact 011-2434-4599

(Service to the nation since 1875)



& Goa and Kerala & Mahe. Near normal (-1.5°C to 1.5°C) at many places over Nagaland, Manipur, Mizoram & Tripura and Telangana; at most places over Andaman & Nicobar Islands, Coastal Karnataka, North Interior Karnataka, South Interior Karnataka and Lakshadweep; at few places over Punjab, Himachal Pradesh, Jammu-Kashmir-Ladakh-Gilgit-Baltistan- Muzaffarabad and Rayalaseema; at isolated places over Assam & Meghalaya.

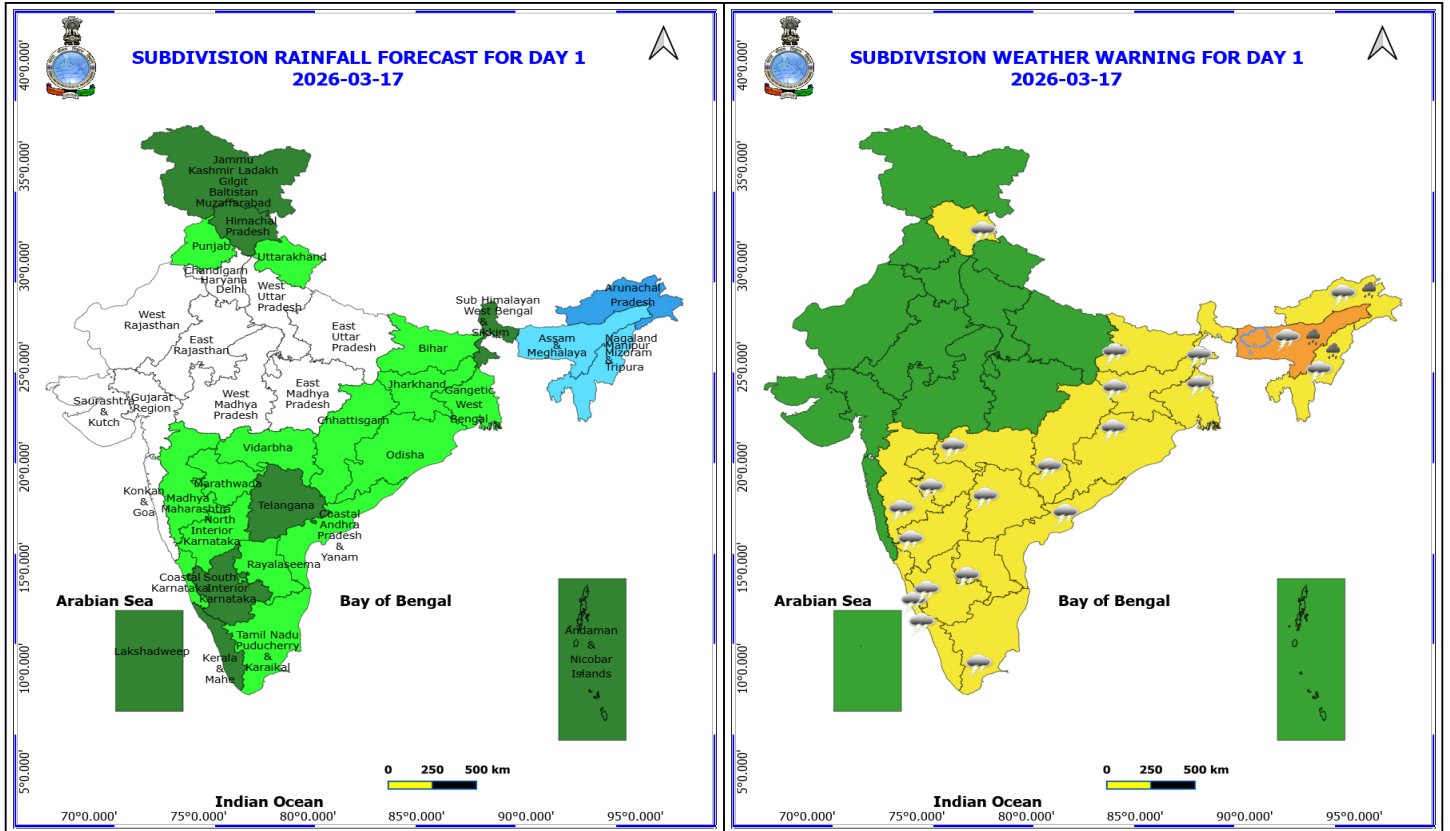
- **Minimum/night temperatures** were in the range of 14–18°C over Haryana, Chandigarh, Delhi, Rajasthan, Uttar Pradesh, Madhya Pradesh, Chhattisgarh, Saurashtra & Kutch, Madhya Maharashtra, West Bengal, Assam. They were in the range of 18–25°C over remaining parts of the plains of the country. **Today, the lowest minimum temperature of 12.8°C was observed at Amritsar (Punjab) over the plains of India.**
- **Minimum/night Temperature** were appreciably above normal (3.1? to 5.0?) over east Uttar Pradesh above normal (1.6? to 3.0?) over West Uttar Pradesh, south Rajasthan, east Madhya Pradesh, Gujarat State, Chhattisgarh, Vidarbha, Marathwada, Bihar, Jharkhand, Rayalaseema and Tamil Nadu, Puducherry & Karaikal and near normal over rest parts of the country.

Meteorological Analysis (Based on 0830 hours IST)

- The **Western Disturbance** as a trough in middle & upper level westerlies with its axis at 5.8 km above mean sea level now runs roughly along Long. 80°E to the north of Lat. 22°N.
- The **upper air cyclonic circulation** over Haryana & neighbourhood at 1.5 km above mean sea level persists.
- The **upper air cyclonic circulation** over northwest Rajasthan now lies over East Rajasthan & adjoining north Madhya Pradesh at 0.9 km above mean sea level.
- The **trough** in westerlies now runs roughly along Long. 92°E to the north of Lat. 23°N between 3.1 & 5.8 km above mean sea level.
- A **trough** in easterlies runs roughly along Long. 82°E to the north of Lat. 9°N at 1.5 km above mean sea level.
- The **upper air cyclonic circulation** over northwest Uttar Pradesh now lies over West Uttar Pradesh & neighbourhood at 0.9 km above mean sea level.
- An **upper air cyclonic circulation** lies over East Uttar Pradesh & neighbourhood at 0.9 km above mean sea level.
- An **upper air cyclonic circulation** lies over southwest Rajasthan & neighbourhood at 0.9 km above mean sea level.
- An **upper air cyclonic circulation** lies over west Rajasthan & adjoining Pakistan at 1.5 km above mean sea level.
- The **upper air cyclonic circulation** over Northeast Assam & adjoining Arunachal Pradesh extending upto 1.5 km above mean sea level persists.
- The **trough** from North Interior Karnataka to Gulf of Mannar across South Interior Karnataka, interior Tamil Nadu at 0.9 km above mean sea level persists.
- **Subtropical westerly Jet Stream** with core winds of the order of 110 knots at 12.6 km above mean sea level continues to prevail over East India.
- A **Western Disturbance** as a trough in middle & upper level westerlies with its axis at 5.8 km above mean sea level runs roughly along Long. 52°E to the north of Lat. 33°N.
- The east-west **trough** from the above cyclonic circulation to southwest Uttar Pradesh across northeast Rajasthan at 0.9 km above mean sea level has become less marked.
- The **trough** from Southwest Bay of Bengal off North Sri Lanka coast to Comorin area across Gulf of Mannar at 3.1 km above mean sea level has become less marked.

Weather Outlook for subsequent 3 days

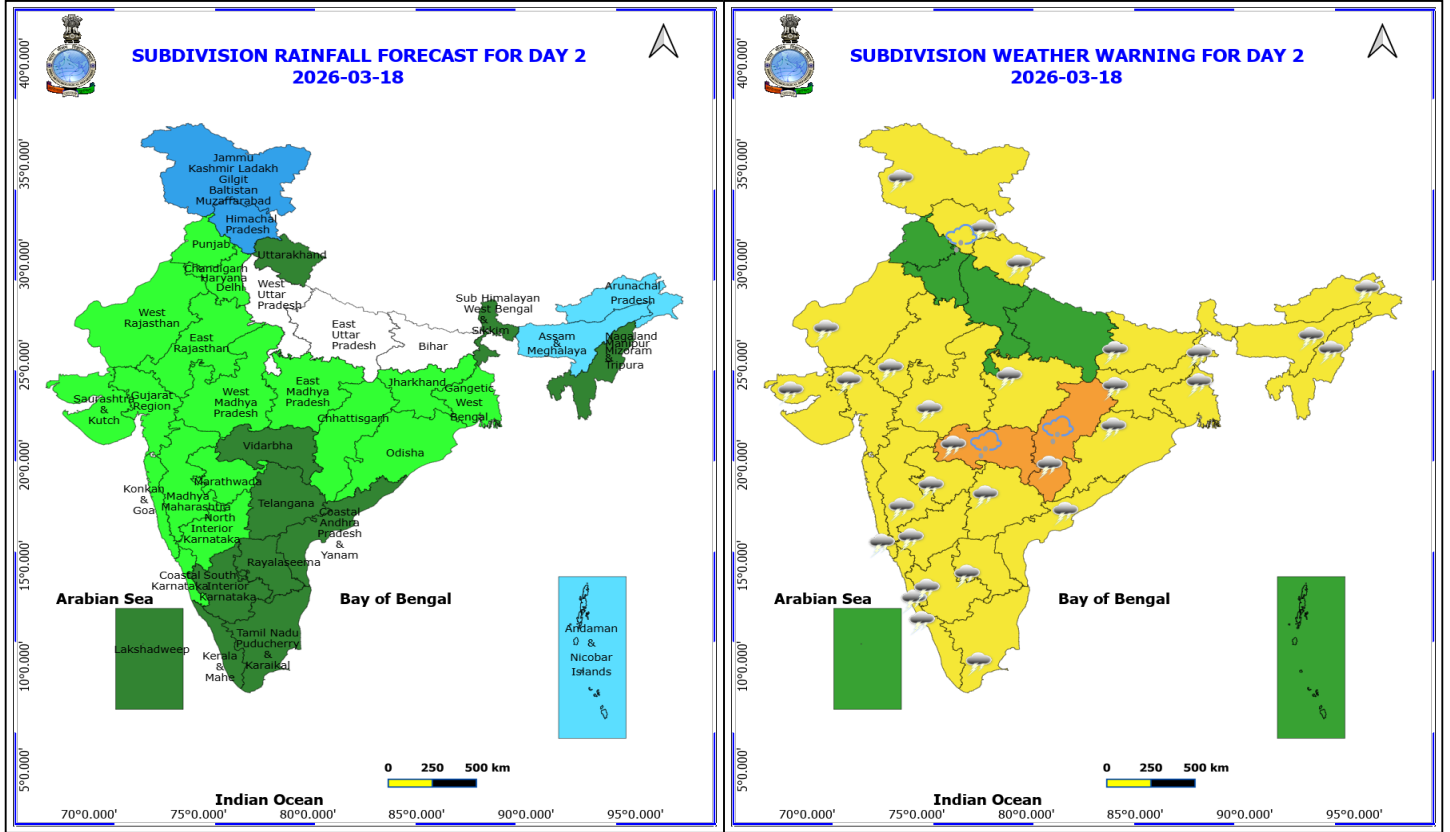
- fairly widespread rainfall activity is likely over the Northeast India.
- Isolated rainfall activity is likely over the Northwest India and Kerala.



17 March (Day 1)

- ❖ **Heavy Rainfall** very likely at isolated places over Arunachal Pradesh, Assam & Meghalaya and Nagaland, Manipur, Mizoram and Tripura.
- ❖ **Thunderstorm accompanied with Hailstorm** very likely at isolated places over Assam & Meghalaya.
- ❖ **Thunderstorm accompanied with lightning & gusty winds(40-50kmph)** very likely at isolated places over Assam & Meghalaya, Chhattisgarh, Interior Karnataka, Jharkhand, Nagaland, Manipur, Mizoram and Tripura and Telangana.
- ❖ **Thunderstorm accompanied with lightning & gusty winds(30-40kmph)** very likely at isolated places over Andhra Pradesh, Arunachal Pradesh, Bihar, Himachal Pradesh, Kerala & Mahe, Madhya Maharashtra, Marathwada, Odisha and West Bengal & Sikkim.
- ❖ **Thunderstorm accompanied with Lightning** very likely at isolated places over Coastal Karnataka, Tamil Nadu Puducherry & Karaikal and Vidarbha.

No Fishermen Warning

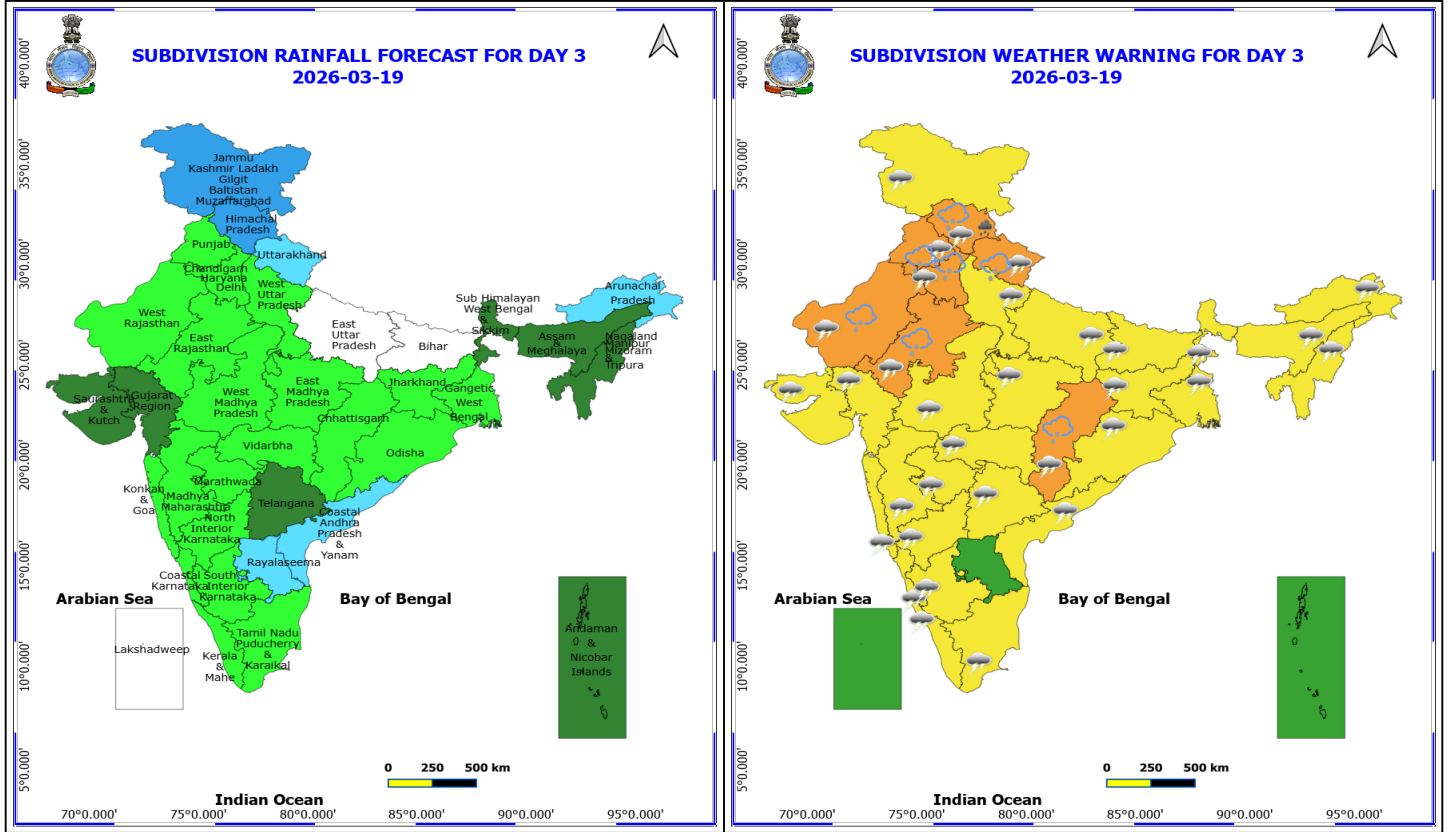


18 March (Day 2)

- ❖ **Thunderstorm accompanied with Hailstorm** very likely at isolated places over Chhattisgarh, Himachal Pradesh and Vidarbha.
- ❖ **Thunderstorm accompanied with lightning & gusty winds(40-50kmph)** very likely at isolated places over Chhattisgarh, Gujarat State, Himachal Pradesh, Interior Karnataka, Madhya Pradesh, Maharashtra and Uttarakhand.
- ❖ **Thunderstorm accompanied with lightning & gusty winds(30-40kmph)** very likely at isolated places over Andhra Pradesh, Assam & Meghalaya, Bihar, Jammu-Kashmir-Ladakh-Gilgit-Baltistan-Muzaffarabad, Jharkhand, Kerala & Mahe, Nagaland, Manipur, Mizoram and Tripura, Odisha, Telangana and West Bengal & Sikkim.
- ❖ **Thunderstorm accompanied with Lightning** very likely at isolated places over Arunachal Pradesh, Coastal Karnataka, Konkan & Goa, Rajasthan and Tamil Nadu Puducherry & Karaikal.

No Fishermen Warning

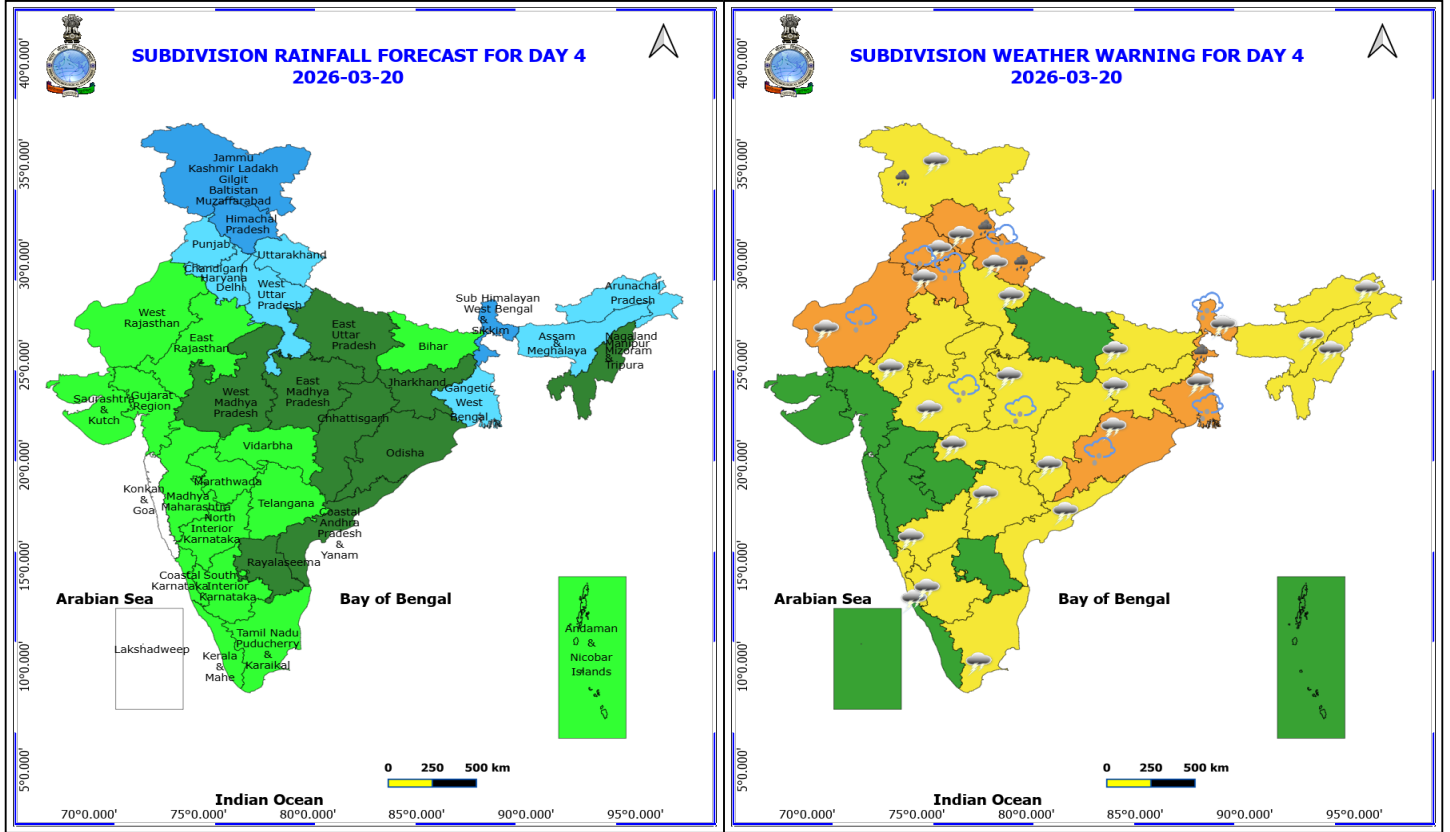
*Red color warning does not mean "Red Alert" Red color warning means "Take Action"
Forecast and warning for any day is valid from 0830 hours IST of day till 0830 hours IST of next day
For more details kindly visit <https://mausam.imd.gov.in> or contact 011-2434-4599
(Service to the nation since 1875)



19 March (Day 3)

- ❖ **Heavy Rainfall** very likely at isolated places over Himachal Pradesh.
- ❖ **Thunderstorm accompanied with Hailstorm** very likely at isolated places over Chhattisgarh, Haryana, Chandigarh & Delhi, Himachal Pradesh, Punjab, Rajasthan and Uttarakhand.
- ❖ **Thundersquall with wind speed reaching(50-60kmph)** very likely at isolated places over Uttarakhand.
- ❖ **Thunderstorm accompanied with lightning & gusty winds(40-50kmph)** very likely at isolated places over Chhattisgarh, Coastal Andhra Pradesh, Gujarat State, Haryana, Chandigarh & Delhi, Himachal Pradesh, Jammu-Kashmir-Ladakh-Gilgit-Baltistan-Muzaffarabad, Jharkhand, Madhya Pradesh, Maharashtra, Punjab, Rajasthan, Telangana and Uttar Pradesh.
- ❖ **Thunderstorm accompanied with lightning & gusty winds(30-40kmph)** very likely at isolated places over Bihar, Interior Karnataka, Odisha and West Bengal & Sikkim.
- ❖ **Thunderstorm accompanied with Lightning** very likely at isolated places over Arunachal Pradesh, Assam & Meghalaya, Coastal Karnataka, Kerala & Mahe, Konkan & Goa, Nagaland, Manipur, Mizoram and Tripura and Tamil Nadu Puducherry & Karaikal.

No Fishermen Warning



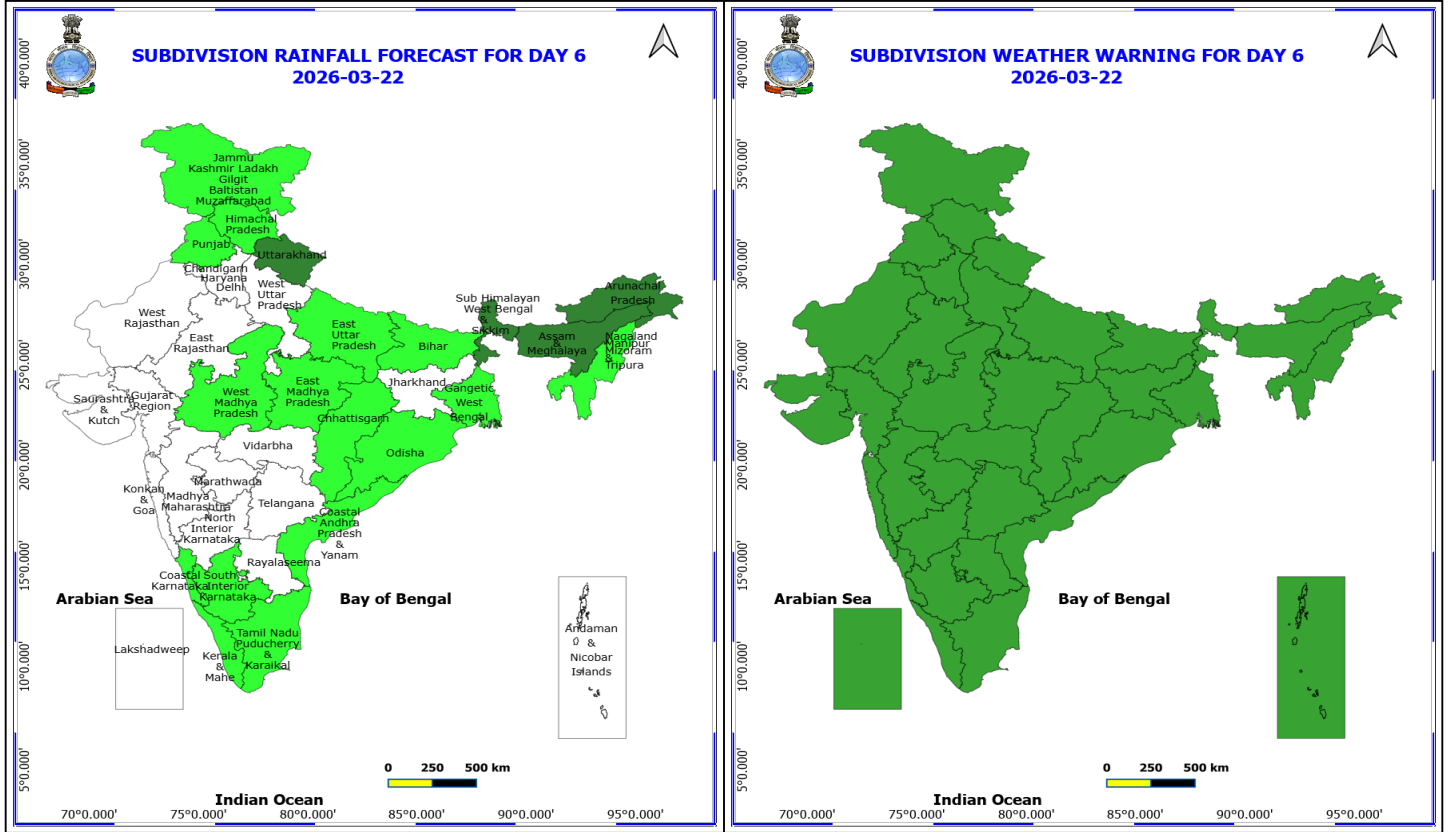
20 March (Day 4)

- ❖ **Heavy Rainfall** likely at isolated places over Himachal Pradesh, Jammu-Kashmir-Ladakh-Gilgit-Baltistan-Muzaffarabad, Sub Himalayan West Bengal & Sikkim and Uttarakhand.
- ❖ **Thunderstorm accompanied with Hailstorm** likely at isolated places over Haryana, Chandigarh & Delhi, Madhya Pradesh, Odisha, Punjab, Uttarakhand, West Bengal & Sikkim and West Rajasthan.
- ❖ **Thundersquall with wind speed reaching(50-60kmph)** likely at isolated places over Uttarakhand and West Bengal & Sikkim.
- ❖ **Thunderstorm accompanied with lightning & gusty winds(40-50kmph)** likely at isolated places over Bihar, Chhattisgarh, Haryana, Chandigarh & Delhi, Himachal Pradesh, Jharkhand, Madhya Pradesh, Odisha, Punjab, Rajasthan, Vidarbha and West Uttar Pradesh.
- ❖ **Thunderstorm accompanied with lightning & gusty winds(30-40kmph)** likely at isolated places over Coastal Andhra Pradesh, Interior Karnataka and Telangana.
- ❖ **Thunderstorm accompanied with Lightning** likely at isolated places over Arunachal Pradesh, Assam & Meghalaya, Coastal Karnataka, Jammu-Kashmir-Ladakh-Gilgit-Baltistan-Muzaffarabad, Nagaland, Manipur, Mizoram and Tripura and Tamil Nadu Puducherry & Karaikal.

No Fishermen Warning

***Red color warning does not mean "Red Alert" Red color warning means "Take Action"**
Forecast and warning for any day is valid from 0830 hours IST of day till 0830 hours IST of next day
For more details kindly visit <https://mausam.imd.gov.in> or contact 011-2434-4599

(Service to the nation since 1875)

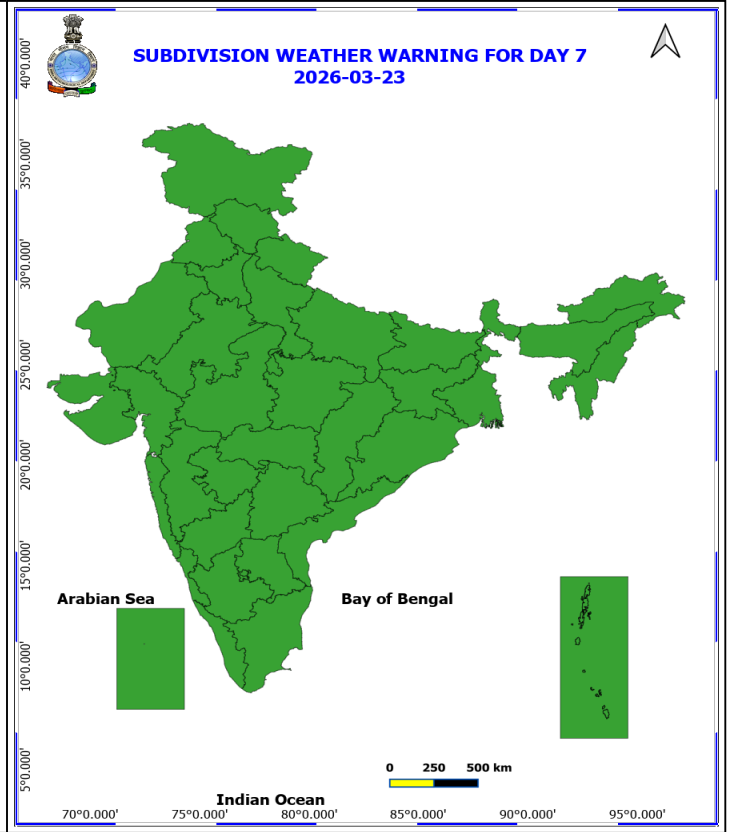
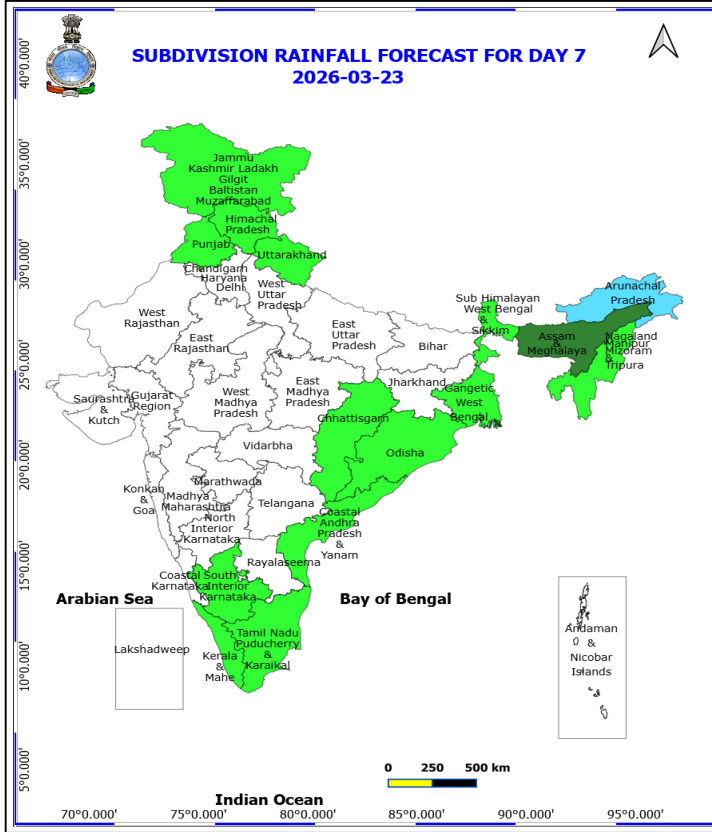


22 March (Day 6)

No Warning

No Fishermen Warning

*Red color warning does not mean "Red Alert" Red color warning means "Take Action"
Forecast and warning for any day is valid from 0830 hours IST of day till 0830 hours IST of next day
For more details kindly visit <https://mausam.imd.gov.in> or contact 011-2434-4599
(Service to the nation since 1875)



23 March (Day 7)

No Warning

No Fishermen Warning



Table-1

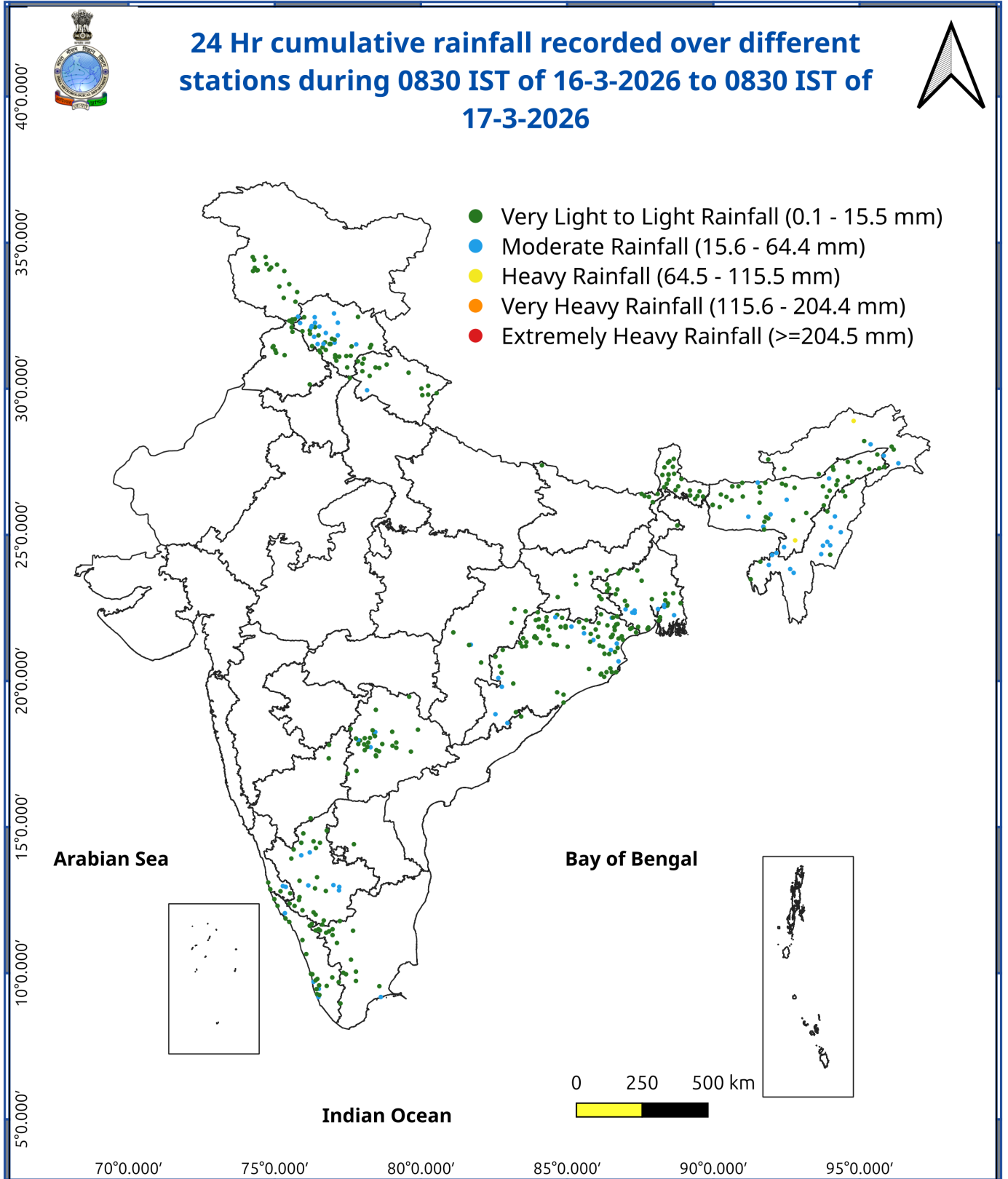
7 Days Rainfall Forecast

S.No.	Subdivision	17- Mar	18- Mar	19- Mar	20- Mar	21- Mar	22- Mar	23- Mar
		Day 1	Day 2	Day 3	Day 4	Day 5	Day 6	Day 7
1	ANDAMAN & NICOBAR ISLANDS	SCT	FWS	SCT	ISOL	DRY	DRY	DRY
2	ARUNACHAL PRADESH	WS	FWS	FWS	FWS	SCT	SCT	FWS
3	ASSAM & MEHGHALAYA	FWS	FWS	SCT	FWS	FWS	SCT	SCT
4	N. M. M. & T.	FWS	SCT	SCT	SCT	ISOL	ISOL	ISOL
5	S.H. WEST BENGAL & SIKKIM	SCT	SCT	SCT	WS	WS	SCT	ISOL
6	GANGETIC WEST BENGAL	ISOL	ISOL	ISOL	FWS	FWS	ISOL	ISOL
7	ODISHA	ISOL	ISOL	ISOL	SCT	SCT	ISOL	ISOL
8	JHARKHAND	ISOL	ISOL	ISOL	SCT	SCT	DRY	DRY
9	BIHAR	ISOL	DRY	DRY	ISOL	ISOL	ISOL	DRY
10	EAST UTTAR PRADESH	DRY	DRY	DRY	SCT	SCT	ISOL	DRY
11	WEST UTTAR PRADESH	DRY	DRY	ISOL	FWS	ISOL	DRY	DRY
12	UTTARAKHAND	ISOL	SCT	FWS	FWS	SCT	SCT	ISOL
13	HARYANA, CHD & DELHI	DRY	ISOL	ISOL	FWS	ISOL	DRY	DRY
14	PUNJAB	ISOL	ISOL	ISOL	FWS	DRY	ISOL	ISOL
15	HIMACHAL PRADESH	SCT	WS	WS	WS	SCT	ISOL	ISOL
16	JAMMU AND KASHMIR AND LADAKH	SCT	WS	WS	WS	ISOL	ISOL	ISOL
17	WEST RAJASTHAN	DRY	ISOL	ISOL	ISOL	DRY	DRY	DRY
18	EAST RAJASTHAN	DRY	ISOL	ISOL	ISOL	DRY	DRY	DRY
19	WEST MADHYA PRADESH	DRY	ISOL	ISOL	SCT	ISOL	ISOL	DRY
20	EAST MADHYA PRADESH	DRY	ISOL	ISOL	SCT	ISOL	ISOL	DRY
21	GUJRAT REGION	DRY	ISOL	SCT	ISOL	DRY	DRY	DRY
22	SAURASHTRA & KUTCH	DRY	ISOL	SCT	ISOL	DRY	DRY	DRY
23	KONKAN & GOA	DRY	ISOL	ISOL	DRY	DRY	DRY	DRY
24	MADHYA MAHARASHTRA	ISOL	ISOL	ISOL	ISOL	DRY	DRY	DRY
25	MARATHWADA	ISOL	ISOL	ISOL	ISOL	DRY	DRY	DRY
26	VIDARBHA	ISOL	SCT	ISOL	ISOL	ISOL	DRY	DRY
27	CHATTISGARH	ISOL	ISOL	ISOL	SCT	SCT	ISOL	ISOL
28	COASTAL ANDHRA PRADESH	ISOL	SCT	FWS	SCT	ISOL	ISOL	ISOL
29	TELANGANA	SCT	SCT	SCT	ISOL	ISOL	DRY	DRY
30	RAYALASEEMA	ISOL	SCT	FWS	SCT	ISOL	DRY	DRY
31	TAMILNADU & PUDUCHERRY	ISOL	SCT	ISOL	ISOL	ISOL	ISOL	ISOL
32	COSTAL KARNATAKA	ISOL	ISOL	ISOL	ISOL	ISOL	ISOL	DRY
33	NORTH INTERIOR KARNATAKA	ISOL	ISOL	ISOL	ISOL	ISOL	DRY	DRY
34	SOUTH INTERIOR KARNATAKA	SCT	SCT	ISOL	ISOL	ISOL	ISOL	ISOL
35	KERALA	SCT	SCT	ISOL	ISOL	ISOL	ISOL	ISOL
36	LAKSHDWEEP	SCT	SCT	DRY	DRY	DRY	DRY	DRY

Legend	Category	%Stations
WS	Widespread/Most Places	76-100
FWS	Fairly Widespread/Many Places	51-75
SCT	Scattered/ A Few Places	26-50
ISOL	Isolated Places	1-25
DRY	No Rain	0

*Red color warning does not mean "Red Alert" Red color warning means "Take Action"
Forecast and warning for any day is valid from 0830 hours IST of day till 0830 hours IST of next day
For more details kindly visit <https://mausam.imd.gov.in> or contact 011-2434-4599

(Service to the nation since 1875)



Impact expected and action suggested due to isolated thunderstorm with lightning/squally winds & Hailstorm over

Isolated **Hailstorm** activity likely over Himachal Pradesh on 18th & 19th; Uttarakhand, Punjab, Haryana Chandigarh and Rajasthan on 19th & 20th; Assam & Meghalaya on 17th; Madhya Pradesh on 20th; Vidarbha on 18th; Chhattisgarh on 18th & 19th; West Bengal & Sikkim and Odisha, on 20th & 21st March.

Thundersquall (wind speed reaching 50-60 kmph gusting to 70 kmph) very likely at isolated places over Uttarakhand on 19th & 20th; Sub-Himalayan West Bengal & Sikkim on 20th, Gangetic West Bengal & Odisha on 20th & 21st March.

Impact expected:

Breaking of tree branches, uprooting of large avenue trees. Large dead limbs blown from trees. Damage to Standing crops.

Minor to Major damage to banana and papaya trees.

Minor to major damage to power and communication lines due to breaking of branches.

Strong wind/hail may damage plantation, horticulture and standing crops.

Hail may injure people and cattle at open places.

Partial damage to vulnerable structures due to strong winds.

Minor damage to kutcha houses/walls and huts.

Loose objects may fly.

Action suggested:

People are advised to keep a watch on the weather for worsening conditions and be ready to move to safer places accordingly.

Stay indoors, close windows & doors and avoid travel if possible.

Take safe shelters; do not take shelter under trees.

Do not lie on concrete floors and do not lean against concrete walls.

Unplug electrical/ electronic appliances.

Immediately get out of water bodies.

Keep away from all the objects that conduct electricity.

Agromet advisories for various parts of the country

Agromet advisories for likely impact of Hailstorms

***Red color warning does not mean "Red Alert" Red color warning means "Take Action"**
Forecast and warning for any day is valid from 0830 hours IST of day till 0830 hours IST of next day
For more details kindly visit <https://mausam.imd.gov.in> or contact 011-2434-4599

(Service to the nation since 1875)

Use hail nets or hail caps in fruit orchards and vegetable plants to protect them from mechanical damage in Himachal Pradesh, Assam and Meghalaya.

Agromet advisories for likely impact of Heavy Rainfall

In **Arunachal Pradesh**, postpone harvesting of cabbage, pea, mustard and late-maturing paddy varieties and digging of potatoes. Shift the harvested produce to safe places. Drain out excess rainwater from the standing crop fields. Nursery for chilli, tomato, and other vegetables may be prepared under covered shelters or poly houses to protect seedlings from rain. Open nurseries should be immediately covered with polythene sheets or sack cloths to protect seedlings from rain.

In **Assam**, drain out excess rainwater from the standing crop fields.

In **Meghalaya**, ensure proper drainage in summer vegetable crops. Carry out staking and propping of plantation crops and protect young seedlings from heavy rainfall. Keep the harvested pods of garden peas in safer place immediately.

In **Jammu & Kashmir**, provide proper drainage channels to avoid water stagnation in standing crops.

In **Himachal Pradesh**, undertake harvesting of matured vegetables at the earliest.

In **Uttarakhand**, undertake harvesting of matured rapeseed, mustard & vegetable pea at the earliest and keep the harvested produce in safe place. Make arrangements to drain out excess water.

In **Sub Himalayan West Bengal**, postpone harvesting of potato for 2–3 days after rainfall until soil dries. Cover the nursery of cucurbits and Dalle khorsani with polyethylene sheets or agro-net

Agromet advisories for likely impact of Thunderstorm / Gusty Winds

Provide mechanical support to horticultural crops and staking or support to vegetables and young fruit plants / fruit-bearing plants to avoid lodging due to strong winds.

Shift the harvested produce in safer places or cover the produce with tarpaulin sheets in the fields. Tie the harvested crops properly and cover them to minimise the risk of displacement due to strong surface winds.

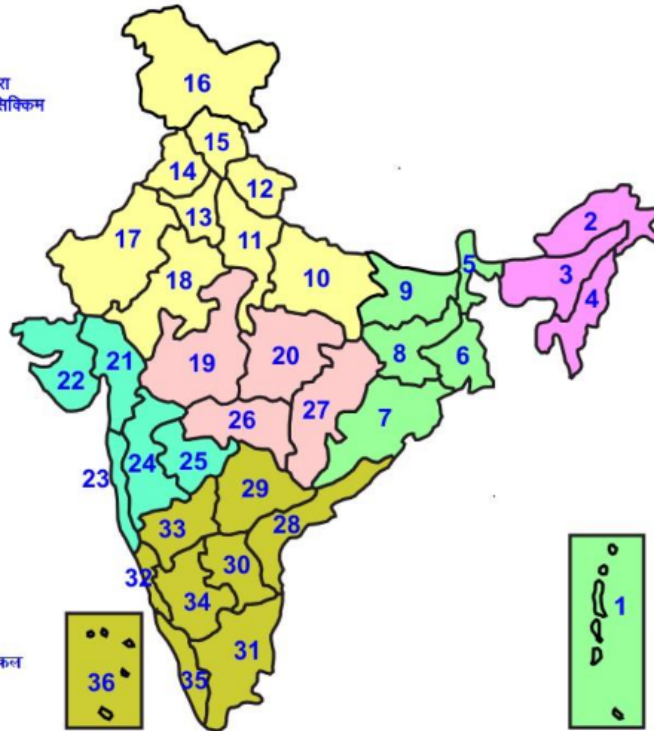
Livestock / Poultry

Keep the animals inside the shed during Heavy Rainfall/Hailstorm period and provide them balanced feed. Store feed and fodder in a safe place to prevent spoilage.

Provide clean, hygienic and plenty of drinking water to animals.

LEGENDS

- 1 अंडमान और निकोबार द्वीप समुह
- 2 अरुणाचल प्रदेश
- 3 असम और मेघालय
- 4 नागालैंड मनीपुर मीजोरम और त्रिपुरा
- 5 उप हिमालय पश्चिम बंगाल एवं सिक्किम
- 6 पश्चिम बंगाल
- 7 ओडिसा
- 8 झारखंड
- 9 बिहार
- 10 पूर्वी उत्तर प्रदेश
- 11 पश्चिम उत्तर प्रदेश
- 12 उत्तराखंड
- 13 हरियाणा चंडिगढ़ एवं दिल्ली
- 14 पंजाब
- 15 हिमाचल प्रदेश
- 16 जम्मू एवं कश्मीर एवं लद्दाख
- 17 पश्चिम राजस्थान
- 18 पूर्वी राजस्थान
- 19 पश्चिम मध्य प्रदेश
- 20 पूर्वी मध्य प्रदेश
- 21 गुजरात क्षेत्र
- 22 सौराष्ट्र एवं कच्छ
- 23 कोंकण एवं गोवा
- 24 मध्य महाराष्ट्र
- 25 मराठावाडा
- 26 विदर्भ
- 27 छत्तीसगढ़
- 28 तटीय आंध्र प्रदेश एवं यनम
- 29 तेलंगाना
- 30 रायलसीमा
- 31 तमिलनाडु, पुदुचेरी एवं कराईकल
- 32 तटिय कर्नाटक
- 33 आंतरिक उत्तरी कर्नाटक
- 34 आंतरिक दक्षिणी कर्नाटक
- 35 केरल एवं माहे
- 36 लक्षद्वीप



1. Andaman & Nicobar Islands
2. Arunachal Pradesh
3. Assam & Meghalaya
4. Nagaland, Manipur, Mizoram & Tripura
5. Sub-Himalayan West Bengal & Sikkim
6. Gangetic West Bengal
7. Orissa
8. Jharkhand
9. Bihar
10. East Uttar Pradesh
11. West Uttar Pradesh
12. Uttarakhand
13. Haryana, Chd & Delhi
14. Punjab
15. Himachal Pradesh
16. Jammu & Kashmir and Ladakh
17. West Rajasthan
18. East Rajasthan
19. West Madhya Pradesh
20. East Madhya Pradesh
21. Gujarat
22. Saurashtra
23. Konkan & Goa
24. Madhya Maharashtra
25. Marathawada
26. Vidharbha
27. Chhattisgarh
28. Coastal Andhra Pradesh & Yanam
29. Telangana
30. Rayalaseema
31. Tamilnadu, Puducherry & Karaikal
32. Coastal Karnataka
33. North Interior Karnataka
34. South Interior Karnataka
35. Kerala & Mahe
36. Lakshadweep

SPATIAL DISTRIBUTION (% of Stations reporting)

% Stations	Category	% Stations	Category
76-100	Widespread (WS/ Most Places)	26-50	Scattered (SCT/ A Few Places)
51-75	Fairly Widespread (FWS/ Many Places)	1-25	Isolated (ISOL)

Subdivision Colour

- NO WARNING
- WATCH (BE UPDATED)
- ALERT (BE PREPARED TO TAKE ACTION)
- WARNING (TAKE ACTION)

Probabilistic Forecast

Terms	Probability of Occurrence (%)
Unlikely	< 25
Likely	25 - 50
Very Likely	50 - 75
Most Likely	> 75

- | | | | |
|--------------------------|-----------------|----------------------|--------------------|
| Heavy Rain | Very Heavy Rain | Extremely Heavy Rain | Heavy Snow |
| Thunderstorm & Lightning | Hailstorm | Dust Storm | Dust Raising Winds |
| Strong surface winds | Heat Wave | Hot Day | Warm Night |
| Cold Wave | Cold Day | Ground Frost | Fog |
| Hot & Humid | | | |

*Red color warning does not mean "Red Alert" Red color warning means "Take Action"

Forecast and warning for any day is valid from 0830 hours IST of day till 0830 hours IST of next day

For more details kindly visit <https://mausam.imd.gov.in> or contact 011-2434-4599

(Service to the nation since 1875)

LEGENDS

WARNING

WARNING (TAKE ACTION)
ALERT (BE PREPARED)
WATCH (BE UPDATED)
NO WARNING (NO ACTION)

Probabilistic Forecast

Terms	Probability of Occurrence (%)
Unlikely	< 25
Likely	25 - 50
Very Likely	50 - 75
Most Likely	> 75



Heavy: 64.5 to 115.5 mm/cm *
Very Heavy: 115.6 to 204.4 mm/cm*
Extremely Heavy: > 204.4 mm/cm *



When maximum temperature of a station reaches $\geq 40^{\circ}\text{C}$ for plains and $\geq 30^{\circ}\text{C}$ for hilly regions
(a) Based on Departure from normal

Heat Wave: Maximum Temperature Departure from normal 4.5°C to 6.4°C .
Severe Heat Wave: Maximum Temperature Departure from normal $\geq 6.5^{\circ}\text{C}$

(b). Based on Actual maximum temperature

Heat Wave: When actual maximum temperature $\geq 45^{\circ}\text{C}$.
Severe Heat Wave: When actual maximum temperature $\geq 47^{\circ}\text{C}$

(c). Criteria for heat wave for coastal stations

When maximum temperature departure is $> 4.5^{\circ}\text{C}$ from normal. Heat Wave may be described provided maximum temperature $\geq 37^{\circ}\text{C}$



When maximum temperature remains 40°C

Warm Night: When minimum temperature departure 4.5°C to 6.4°C .
Severe Warm Night: When minimum temperature departure $> 6.4^{\circ}\text{C}$.



When minimum temperature of a station $\leq 10^{\circ}\text{C}$ for plains and $\leq 0^{\circ}\text{C}$ for hilly regions.

(a). Based on departure

Cold Wave: Minimum Temperature Departure from normal -4.5°C to -6.4°C .
Severe Cold Wave: Minimum Temperature Departure from normal $\leq -6.5^{\circ}\text{C}$

(b) Based on actual Minimum Temperature (for Plains only)

Cold Wave : When Minimum Temperature is $\leq 4.0^{\circ}\text{C}$
Severe Cold Wave: When Minimum Temperature is $\leq 2.0^{\circ}\text{C}$

(c) For Coastal Stations

When Minimum Temperature departure is $\leq -4.5^{\circ}\text{C}$ & actual Minimum Temperature is $\leq 15^{\circ}\text{C}$



When minimum temperature of a station $\leq 10^{\circ}\text{C}$ for plains and $\leq 0^{\circ}\text{C}$ for hilly regions
Based on departure

Cold Day: Maximum Temperature Departure from normal -4.5°C to -6.4°C .
Severe Cold Day: Maximum Temperature Departure from normal $\leq -6.5^{\circ}\text{C}$



Phenomenon of small droplets suspended in air and the horizontal visibility $< 1\text{km}$

Moderate Fog: When the visibility between 500-200 metres
Dense Fog: when the visibility between 50- 200 metres
Very Dense Fog: when the visibility < 50 metres



Sudden electrical discharges manifested by a flash of light (Lightning) and a sharp rumbling sound (thunder)



An ensemble of particles of dust or sand energetically lifted to great heights by a strong and turbulent wind.



Ice deposits on ground

Air temperature $\leq 4^{\circ}\text{C}$ (over Plains)



A strong wind that rises suddenly, lasts for atleast 1 minute.

Moderate: Wind speed 52-61 kmph
Severe: Wind speed 62-87 kmph
Very Severe: Wind speed > 87 kmph



Effect of various waves in the sea over specific area

Rough to very rough: Wind speed 41-62 kmph (22-33 knots) & Wave height 2.5-6 metre
High to very high: Wind speed 63-117 kmph (34-63 knots) & Wave height 6-14 metre
Phenomenal: Wind speed > 117 kmph (> 63 knots) & Wave height > 14 metre



Cyclonic Storm: Wind speed 62-87 kmph (34-47 knots)
Severe Cyclonic Storm: Wind speed 88-117 kmph (48-63 knots)
Very Severe Cyclonic Storm: Wind speed 118-165 kmph (64 - 89 knots)
Extremely Severe Cyclonic Storm: Wind speed 166-220 kmph (90 -119 knots)
Super Cyclone Storm: Wind speed > 220 kmph (> 119 knots)

*Red color warning does not mean "Red Alert" Red color warning means "Take Action"

Forecast and warning for any day is valid from 0830 hours IST of day till 0830 hours IST of next day

For more details kindly visit <https://mausam.imd.gov.in> or contact 011-2434-4599

(Service to the nation since 1875)