

2025-11-30

Time of Issue: 20:26:00 hours IST
(Night)

ALL INDIA WEATHER SUMMARY AND FORECAST BULLETIN

Significant Weather Features

Weather Forecast and Warnings:

- Under the influence of The Cyclonic Storm Ditwah over coastal Sri Lanka and adjoining southwest Bay of Bengal, heavy rainfall likely over north Tamil Nadu during 30th November -01st December; Coastal Andhra Pradesh, Yanam & Rayalaseema during 30th November - 02nd December; over Telangana on 01st December; with isolated heavy to very heavy rainfall likely over Tamil Nadu on 30th November, 2025.
- Thunderstorm with lightning very likely over Tamil Nadu, North Coastal Andhra Pradesh & Yanam and Rayalaseema during 30th November-03rd December; over South Interior Karnataka during 30th November -01st December; over Kerala & Mahe during 02nd & 03rd December; North interior Karnataka 01st December, 2025.

Temperature Conditions during past 24 hours till 0830 hours IST of today:

- Minimum temperatures are in the range of less than 6°C at many places over Jammu-Kashmir-Ladakh-Gilgit-Baltistan-Muzaffarabad and Himachal Pradesh; over few places of Uttarakhand and Punjab; in the range of 6-10°C at many places over Punjab, Haryana Chandigarh & Delhi and West Uttar Pradesh; and isolated places over north Rajasthan, East Uttar Pradesh and East Madhya Pradesh. The lowest minimum temperature of 6.4°C is reported at Amritsar (Punjab) over the plains of India.
- Minimum Temperature were below normal (-1.6°C to -3.0°C) at many places over Jammu-Kashmir-Ladakh-Gilgit-Baltistan-Muzaffarabad, Interior Karnataka, Telangana, Odisha & Yanam Odisha and Chhattisgarh; at few places over Madhya Pradesh, Tamil Nadu; at isolated places over Punjab, Haryana, Uttar Pradesh, Kerala and Jharkhand.

Forecast of minimum temperatures:

- Fall in minimum temperature by 2-4 °C likely over Northwest India for the next 3 days and thereafter no large change.
- No large change in minimum temperature for next 3 days over East & Northeast India and thereafter fall in minimum temperature likely by 2-3 °C.
- No large change in minimum temperature for next 24 hours over Maharashtra state and thereafter rise in minimum temperature likely by 2-3 °C in next 4 days. No large change in minimum temperature over the region thereafter.
- No large change in minimum temperature for next 24 hours over Gujrat state and thereafter fall in minimum temperature likely by 2-3 °C in next 3 days. No large change in minimum temperature over the region thereafter.
- No significant change in the minimum temperature likely over central India for the week.

Dense Fog & Cold wave warning Warnings:

- Dense fog conditions very likely to prevail during early morning hours in isolated pockets of Himachal Pradesh during 30th November -02nd December and over Odisha on 30th December, 2025.
- Cold wave conditions very likely to prevail in isolated pockets of Punjab during 30th November -02nd December and Odisha on 30th November, 2025.

Wind Warning, Sea Condition, Fisherman Warning:

(i) Wind Warning:

(a) Along & off north Tamil Nadu & Puducherry Coasts

Gale wind speed reaching 70-80 gusting to 90 kmph is prevailing. Thereafter it is likely to decrease gradually becoming squally wind speed reaching 55-65 gusting to 75 kmph by evening of today, the 30th November and 45-55 gusting to 65 kmph by 1st December morning.

*Red color warning does not mean "Red Alert" Red color warning means "Take Action"

Forecast and warning for any day is valid from 0830 hours IST of day till 0830 hours IST of next day

For more details kindly visit <https://mausam.imd.gov.in> or contact 011-2434-4599

(Service to the nation since 1875)

(b) Along & off south Tamil Nadu coast

Gale wind speed reaching 60-70 gusting to 80 kmph is likely to prevail till 30th November noon. Thereafter it is likely to decrease gradually becoming squally wind speed reaching 50-60 gusting to 70 kmph by evening of today and 45-55 gusting to 65 kmph by morning of 1st December.

(c) Southwest Bay of Bengal, Gulf of Mannar, Comorin area and along & off north Sri Lanka coasts

Gale wind speed reaching 60-70 gusting to 80 kmph is likely to prevail till 30th November noon. Thereafter it is likely to decrease gradually becoming squally wind speed reaching 50-60 gusting to 70 kmph by evening of today and 45-55 gusting to 65 kmph by morning of 1st December.

(d) Adjoining Westcentral Bay of Bengal and along & off south Andhra Pradesh coast:

Squally wind speed reaching 55-65 kmph gusting to 75 kmph is likely to prevail till 30th afternoon. Thereafter, it is likely to decrease becoming squally wind speed reaching 45-55 kmph gusting to 65 kmph on 01st December morning.

(ii) Sea Condition:

(a) Along & off north Tamil Nadu & Puducherry Coasts

Sea condition is very likely to be High till 30th evening. It is very likely to improve gradually becoming very rough to rough by 1st December morning and gradually improve thereafter.

(b) Along & off south Tamil Nadu coast

Sea condition is very likely to be High till 30th November noon. It is very likely to improve gradually becoming very rough to rough by morning of 1st December and gradually improve thereafter.

(c) Southwest Bay of Bengal, Gulf of Mannar, Comorin area and along & off Sri Lanka coasts

Sea condition is very likely to be High till 30th November noon. It is very likely to improve gradually becoming very rough to rough by morning of 1st December and gradually improve thereafter.

(d) Adjoining Westcentral Bay of Bengal and along & off south Andhra Pradesh coast:

Very rough to rough sea conditions are very likely till evening of 30th November. It is likely to improve gradually becoming rough by 01st December morning and gradually improve thereafter.

(iii) Storm Surge Warning:

Storm surge of height about 0.5 m to 1m above the astronomical tide (0.4 m during high tide) is likely to inundate the low-lying coastal areas of Tamil Nadu- Puducherry till 30th afternoon.

(iv) Fishermen Warning:

(a) Total suspension of fishing operations in coastal areas of Sri Lanka, Tamil Nadu, Puducherry and south Andhra Pradesh coasts till 01st December.

(b) Fishermen are advised not to venture into

(i) Southwest Bay of Bengal, Gulf of Mannar, Comorin area and along & off Tamil Nadu, Puducherry & Sri Lanka coasts till 01st December.

(ii) Adjoining areas of westcentral Bay of Bengal and along & off Andhra Pradesh coast till 2nd December.

(iii) Adjoining areas of Southeast Arabian Sea, Lakshadweep, Maldives and along & off Kerala coast till 30th

***Red color warning does not mean "Red Alert" Red color warning means "Take Action"**

Forecast and warning for any day is valid from 0830 hours IST of day till 0830 hours IST of next day

For more details kindly visit <https://mausam.imd.gov.in> or contact 011-2434-4599

(Service to the nation since 1875)



November.

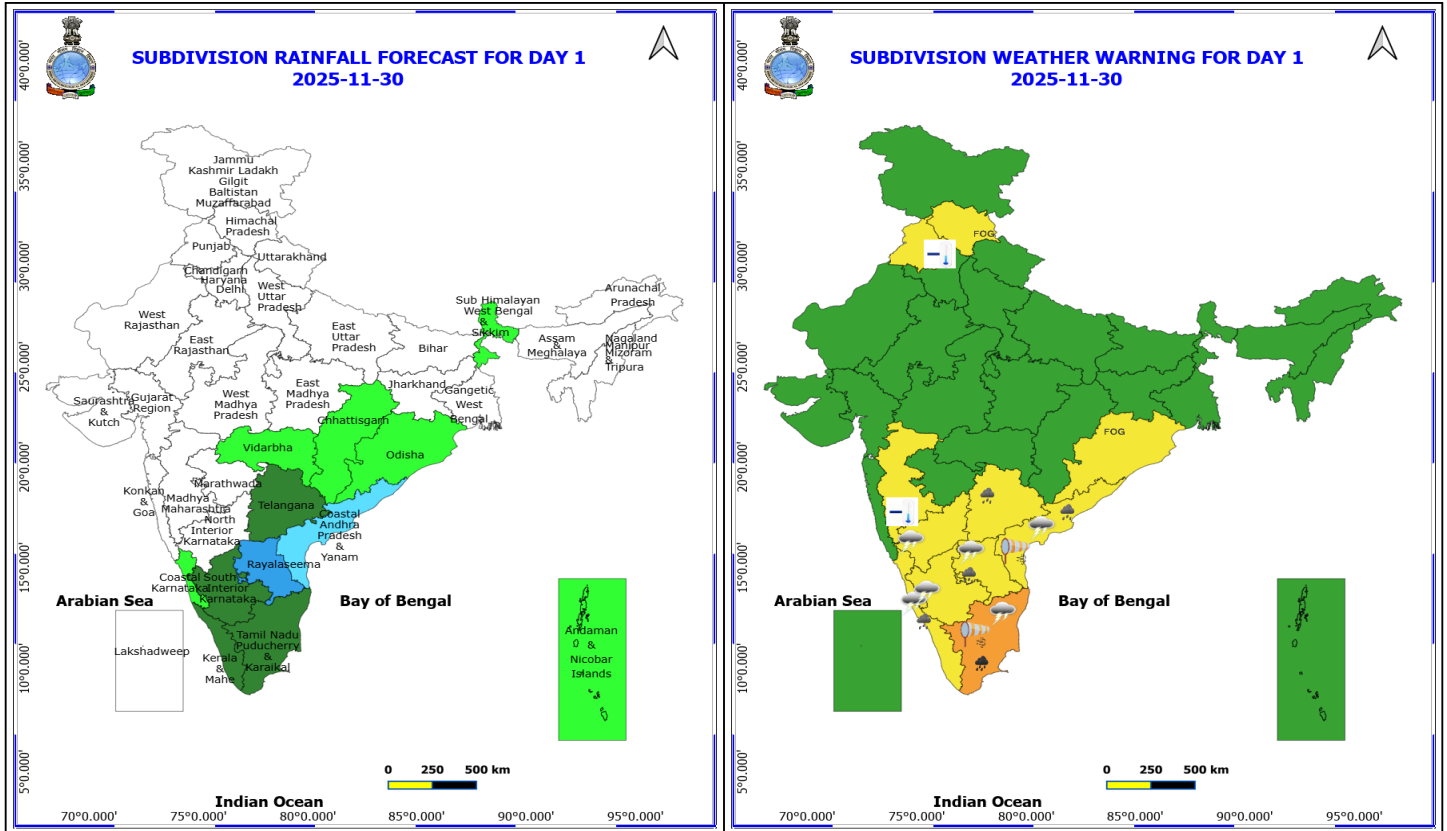
(c) Those out at sea should avoid southwest Bay of Bengal, Gulf of Mannar, Comorin area and along & off Tamil Nadu, Puducherry, south Andhra Pradesh & Sri Lanka coasts; adjoining westcentral Bay of Bengal till 01st December and Southeast Arabian Sea, Lakshadweep, Maldives and along & off Kerala coast till 30th November.

Main Weather Observations:

- ❖ **Rainfall distribution** (from 0830 hours IST to 1730 hours IST of today): **at many places** over Tamilnadu Puducherry & Karaikal, Coastal Andhra Pradesh & Yanam, Rayalaseema and South Interior Karnataka; **Dry** over rest of the country.
- ❖ **Significant rainfall recorded(in cm)** (from 0830 hours IST to 1730 hours IST of today): **Coastal Andhra Pradesh & Yanam:** Kavali (dist Sri Potti Sriramulu Nellore) 5, Nellore (dist Sri Potti Sriramulu Nellore) 1; **Tamilnadu Puducherry & Karaikal:** Karaikal (dist Karaikal), Nagapattinam (dist Nagapattinam), Cuddalore (dist Cuddalore) 1 Each.
- ❖ **Fog Condition Observed (at 1730 hours of today): Dense fog conditions:** at isolated places over Tamilnadu Puducherry & Karaikal **Shallow fog conditions:** at isolated places over Assam & Meghalaya and Sub-himalayan West Bengal & Sikkim.
- ❖ **Visibility reported (at 1730 hours of today):** Odisha: Sundargarh (dist Sundargarh), Koraput (dist Koraput), Titlagarh (dist Balangir) Each; Gangetic West Bengal: Basirhat (dist North 24 Parganas), Suri (dist Birbhum) Each; West Uttar Pradesh: Bulandshahr (dist Bulandshahr) ; Tamilnadu Puducherry & Karaikal: Kodaikanal (dist Dindigul) 50.0; Assam & Meghalaya: Halflong (dist Dima Hasao) 500.0; Sub-himalayan West Bengal & Sikkim: Darjeeling (dist Darjeeling) 500.0.
- ❖ **Minimum Temperature Departures (as on 30-11-2025): below normal(-1.6°C to -3.0°C)** at few places over Konkan & Goa. **The lowest minimum temperature** of 10.1°C is reported at TONK (RAJASTHAN) over the Plains of India.
- ❖ **Maximum Temperature Departures (as on 30-11-2025): below normal(-1.6°C to -3.0°C)** at isolated places over Rayalaseema. **The highest maximum temperature** of 35.2°C is reported at KARWAR (KARNATAKA).

Meteorological Analysis (Based on 1730 hours IST)

- The **Cyclonic Storm Ditwah [Pronunciation: Ditwah]** over southwest Bay of Bengal and adjoining north Tamil Nadu-Puducherry coasts moved northwards with the speed of 5 kmph during past 6 hours, weakened into a Deep Depression and lay centered at 1730 hrs IST of today, the 30th November 2025 over the same region, near latitude 11.8°N and longitude 80.6°E, about 90 km east of Cuddalore (India), 130 km northeast of Karaikal (India), 90 km east-southeast of Puducherry (India), 180 km north-northeast of Vedaranniyam (India) and 140 km south-southeast of Chennai (India). The minimum distance of the centre of the deep depression from north Tamil Nadu-Puducherry coasts is about 80 km. It is very likely to move nearly northwards parallel to North Tamil Nadu-Puducherry coasts and weaken gradually further into a depression around morning of tomorrow, the 01st December. The system will be centered over southwest Bay of Bengal within a minimum distance of 40 km and 20 km from the north Tamil Nadu-Puducherry coastline by midnight of today, the 30th November and morning of tomorrow, the 01st December respectively.
- The **Western disturbance** as an **upper air cyclonic circulation** over North Haryana & neighbourhood between 1.5 & 3.1 km above mean sea level persists.
- Another **Western Disturbance** as a trough in middle tropospheric level with its axis at 5.8 km above mean sea level now runs roughly along Long. 65°E to the north of Lat. 22°N.



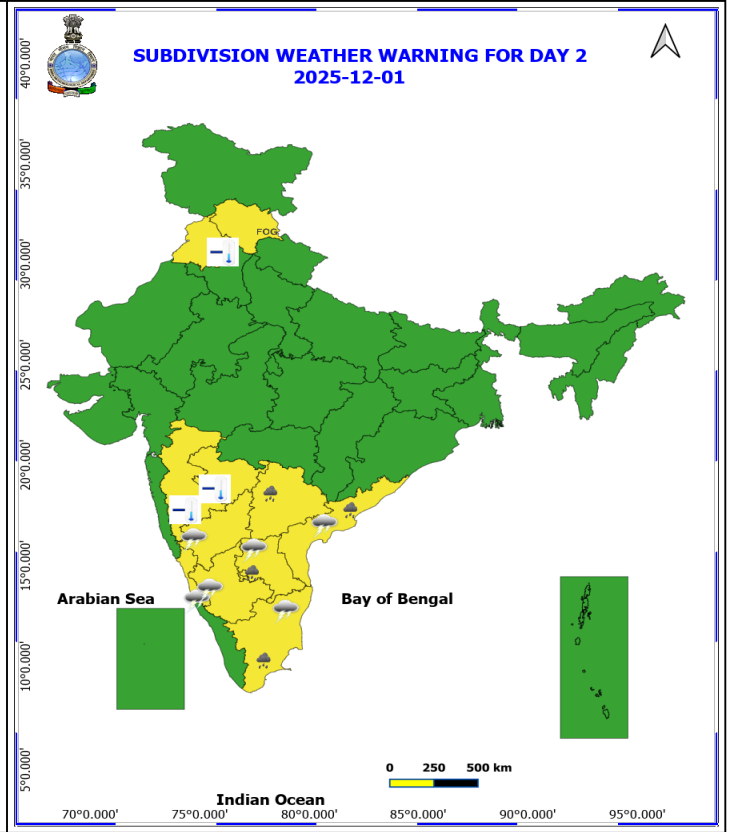
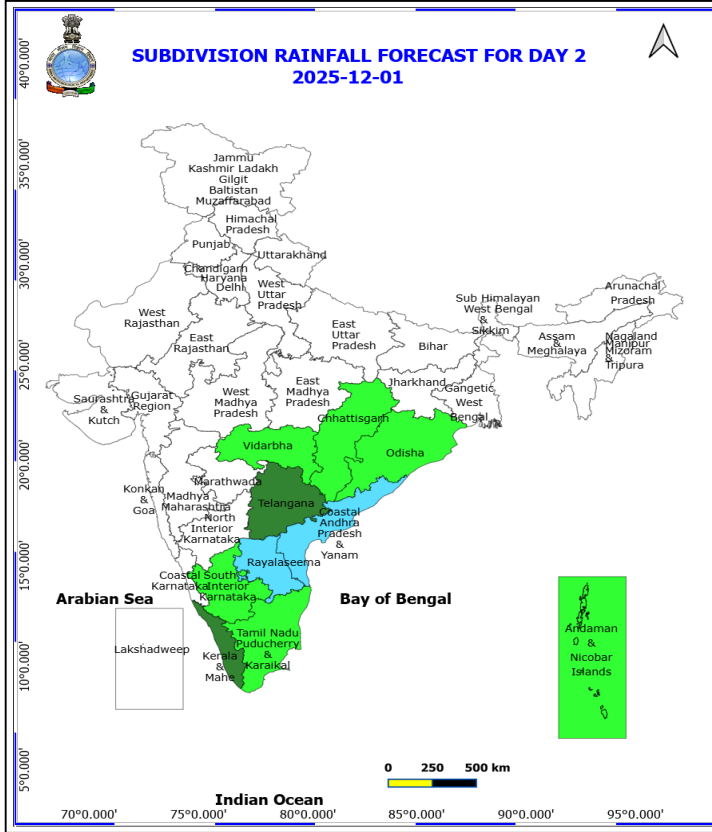
30 November (Day 1)

- ❖ **Heavy to Very Heavy Rainfall** very likely at isolated places over north Tamil Nadu Puducherry & Karaikal.
- ❖ **Heavy Rainfall** very likely at isolated places over Andhra Pradesh, Kerala & Mahe and Telangana.
- ❖ **Thundersquall with wind speed reaching(50-60kmph)** very likely at isolated places over Coastal Andhra Pradesh and Tamil Nadu Puducherry & Karaikal.
- ❖ **Thunderstorm accompanied with lightning & gusty winds(30-40kmph)** very likely at isolated places over Karnataka.
- ❖ **Thunderstorm accompanied with Lightning** very likely at isolated places over Rayalaseema.
- ❖ **Strong Surface Winds** very likely at isolated places over Coastal Andhra Pradesh and Tamil Nadu Puducherry & Karaikal.
- ❖ **Cold wave conditions** very likely at isolated places over Madhya Maharashtra and Punjab.
- ❖ **Fog** very likely at isolated pockets over Himachal Pradesh and Odisha.
- ❖ **Squally weather with wind speeds reaching 35 kmph to 45 kmph gusting to 55 kmph** will prevail along and off south Kerala coast and adjoining Lakshadweep area, over Comorin area, over southwest & adjoining southeast Bay of Bengal, many parts of westcentral Bay of Bengal, along and off south Andhra Pradesh coast.
- ❖ **Squally weather with wind speeds reaching 45 kmph to 55 kmph gusting to 65 kmph** will prevail over Gulf of Mannar, along and off Sri Lanka, Tamil Nadu coasts, over Gulf of Mannar, many parts of southwest Bay of Bengal.

***Red color warning does not mean "Red Alert" Red color warning means "Take Action"**
 Forecast and warning for any day is valid from 0830 hours IST of day till 0830 hours IST of next day
 For more details kindly visit <https://mausam.imd.gov.in> or contact 011-2434-4599
 (Service to the nation since 1875)



❖ **Squally weather with wind speeds reaching 50 kmph to 60 kmph gusting to 70 kmph** will prevail over parts of southwest Bay of Bengal off north Sri Lanka coast.



1 December (Day 2)

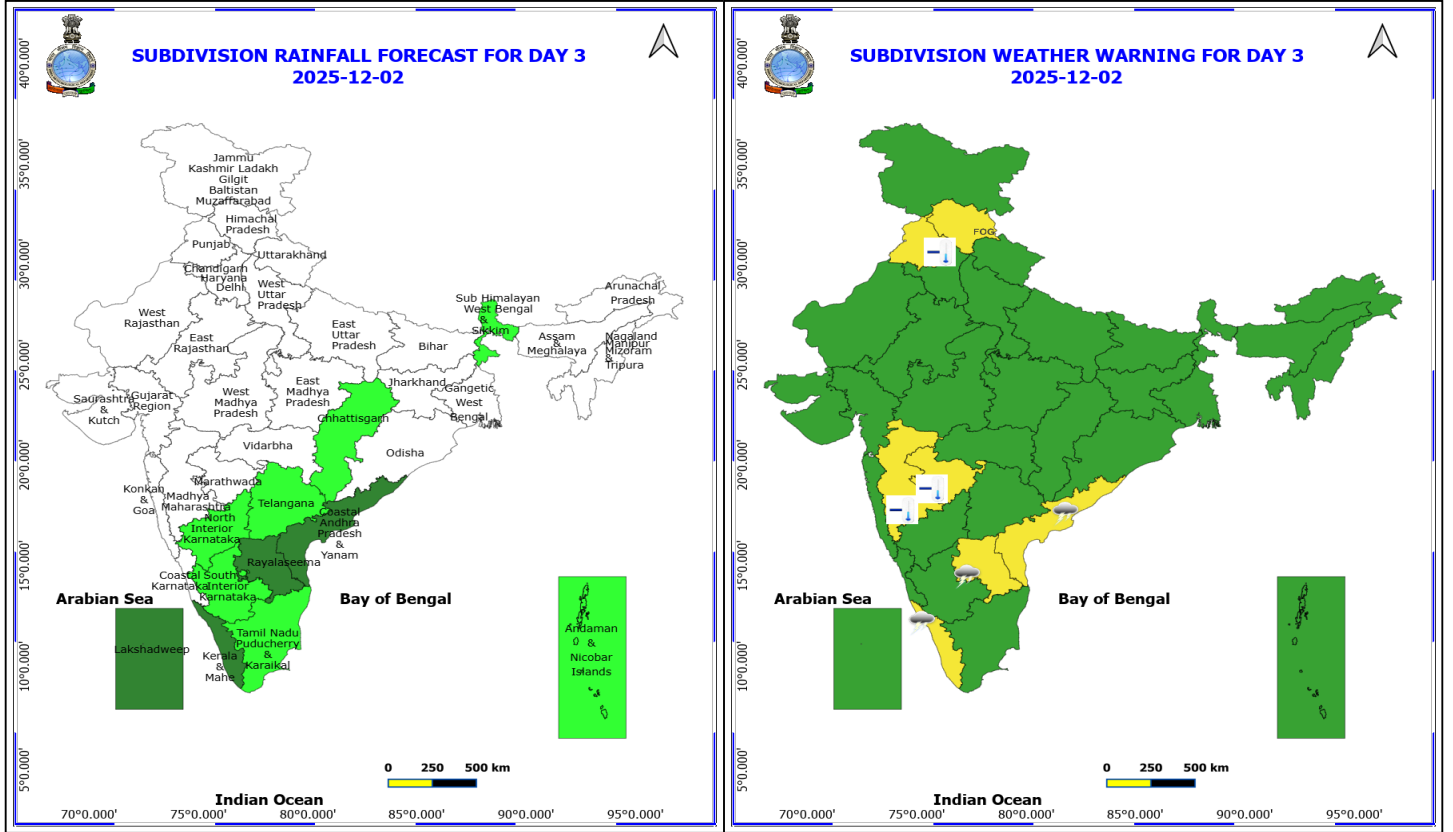
- ❖ **Heavy Rainfall** very likely at isolated places over Andhra Pradesh, Tamil Nadu Puducherry & Karaikal and Telangana.
- ❖ **Thunderstorm accompanied with lightning & gusty winds(30-40kmph)** very likely at isolated places over Karnataka.
- ❖ **Thunderstorm accompanied with Lightning** very likely at isolated places over Andhra Pradesh and Tamil Nadu Puducherry & Karaikal.
- ❖ **Cold wave conditions** very likely at isolated places over Madhya Maharashtra, Marathwada and Punjab.
- ❖ **Fog** very likely at isolated pockets over Himachal Pradesh.
- ❖ **Squally weather with wind speeds reaching 35 kmph to 45 kmph gusting to 55 kmph** will prevail along and off south Kerala coast and adjoining Lakshadweep area, over Comorin area, over southwest & adjoining southeast Bay of Bengal, many parts of westcentral Bay of Bengal, along and off south Andhra Pradesh coast.
- ❖ **Squally weather with wind speeds reaching 45 kmph to 55 kmph gusting to 65 kmph** will prevail over Gulf of Mannar, along and off Sri Lanka, Tamil Nadu coasts, over Gulf of Mannar, many parts of southwest Bay of Bengal.
- ❖ **Squally weather with wind speeds reaching 50 kmph to 60 kmph gusting to 70 kmph** will prevail over parts of southwest Bay of Bengal off north Tamil Nadu coast.

***Red color warning does not mean "Red Alert" Red color warning means "Take Action"**

Forecast and warning for any day is valid from 0830 hours IST of day till 0830 hours IST of next day

For more details kindly visit <https://mausam.imd.gov.in> or contact 011-2434-4599

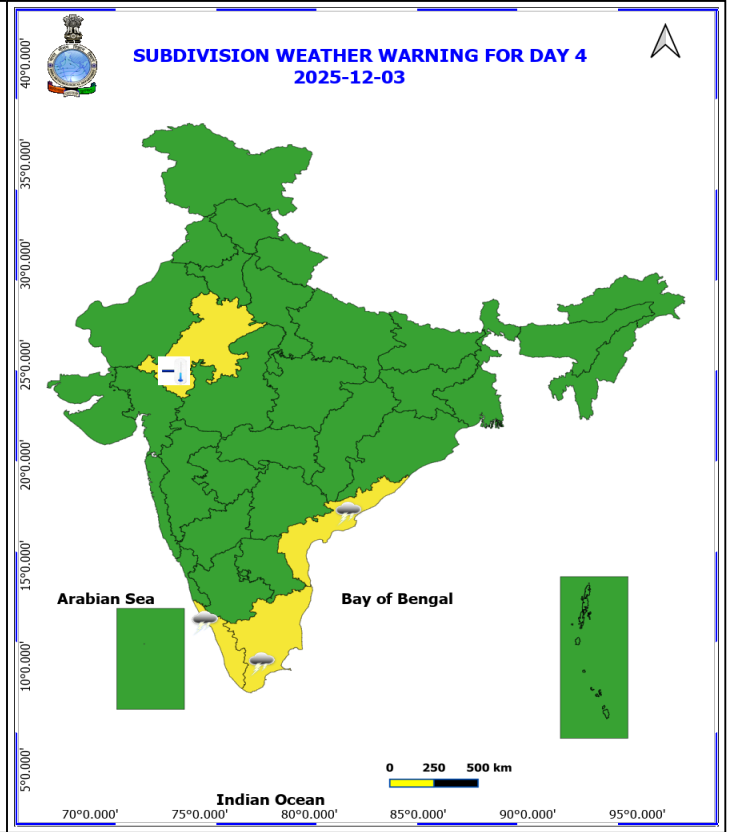
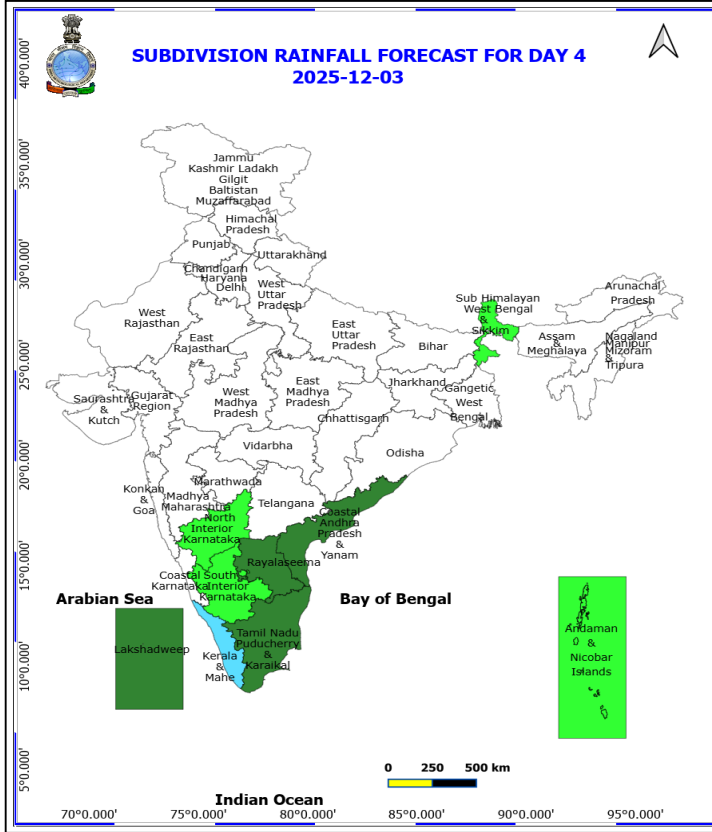
(Service to the nation since 1875)



2 December (Day 3)

- ❖ **Thunderstorm accompanied with Lightning** very likely at isolated places over Andhra Pradesh and Kerala & Mahe.
- ❖ **Cold wave conditions** very likely at isolated places over Madhya Maharashtra, Marathwada and Punjab.
- ❖ **Fog** very likely at isolated pockets over Himachal Pradesh.

No Fishermen Warning



3 December (Day 4)

❖ **Thunderstorm accompanied with Lightning** likely at isolated places over Coastal Andhra Pradesh, Kerala & Mahe and Tamil Nadu Puducherry & Karaikal.

❖ **Cold wave conditions** likely at isolated places over East Rajasthan.

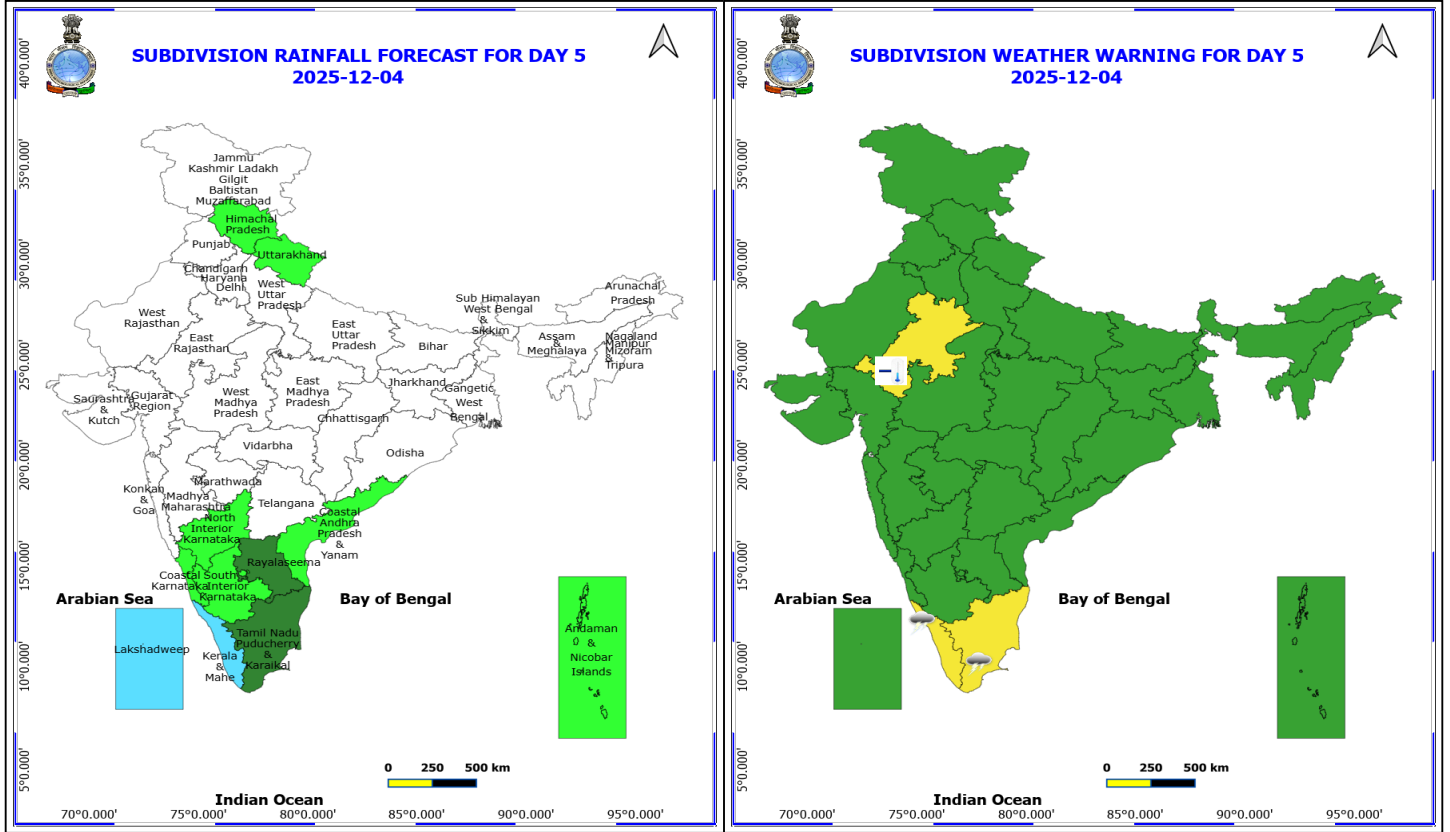
No Fishermen Warning

***Red color warning does not mean "Red Alert" Red color warning means "Take Action"**

Forecast and warning for any day is valid from 0830 hours IST of day till 0830 hours IST of next day

For more details kindly visit <https://mausam.imd.gov.in> or contact 011-2434-4599

(Service to the nation since 1875)

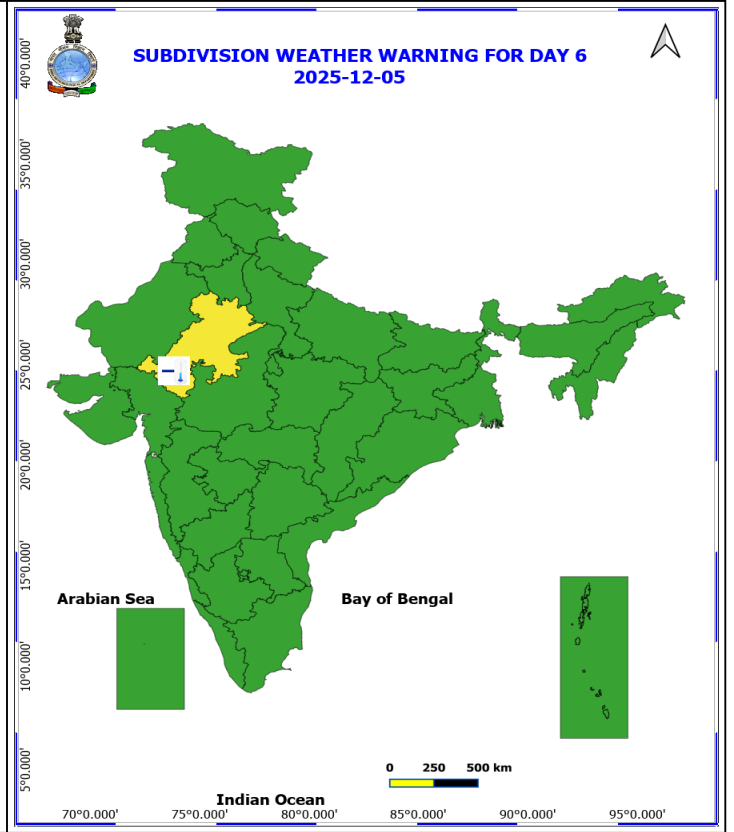
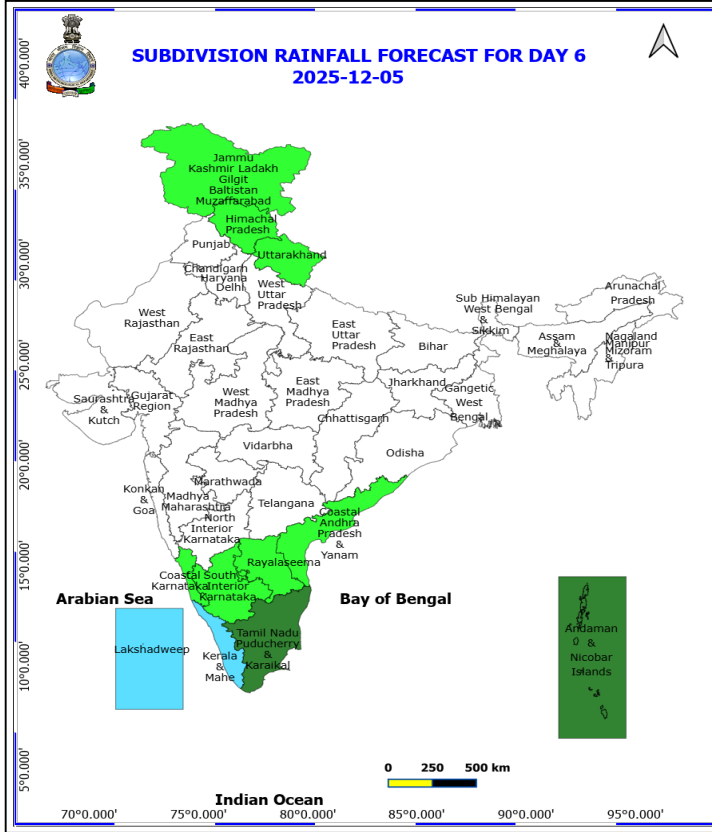


4 December (Day 5)

❖ **Thunderstorm accompanied with Lightning** likely at isolated places over Kerala & Mahe and Tamil Nadu Puducherry & Karaikal.

❖ **Cold wave conditions** likely at isolated places over East Rajasthan.

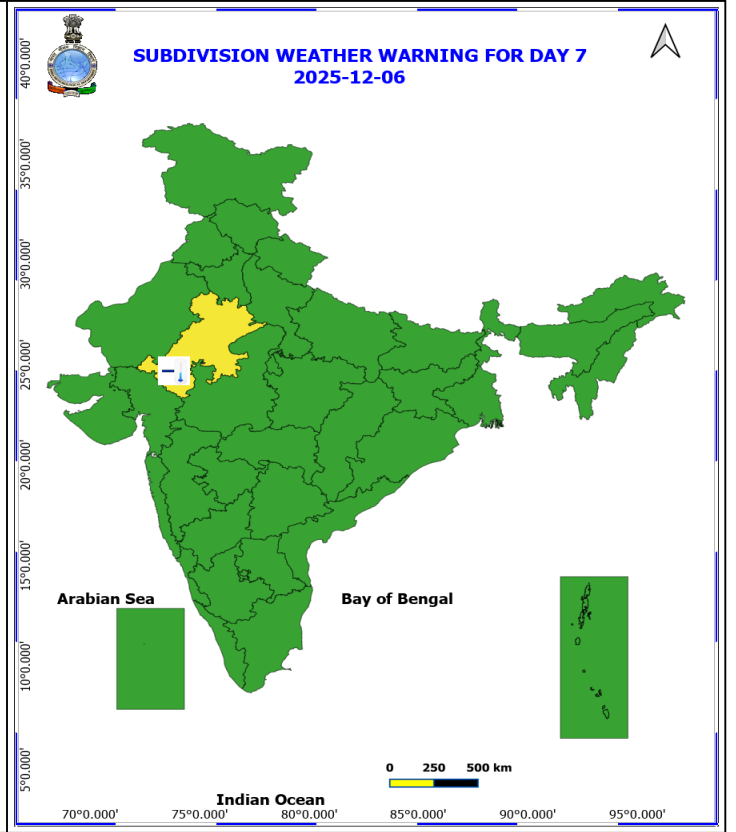
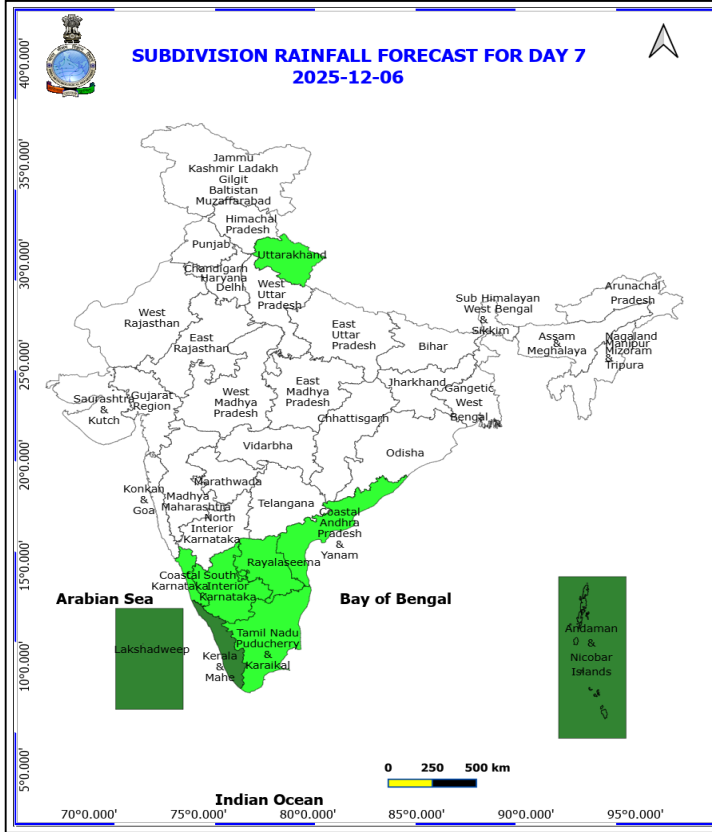
No Fishermen Warning



5 December (Day 6)

❖ Cold wave conditions likely at isolated places over East Rajasthan.

No Fishermen Warning



6 December (Day 7)

❖ **Cold wave conditions** likely at isolated places over East Rajasthan.

No Fishermen Warning

Flash Flood Warnings

24 hours Outlook for the Flash Flood Risk (FFR) till 1730 IST of 01-12-2025 :

Low to Moderate flash flood risk likely over few watersheds & neighbourhoods of following Met Sub-divisions during next 24 hours.

Coastal Andhra Pradesh & Yanam - Guntur, Krishna, Prakasam and Nellore districts.

Rayalaseema - Chittoor and Kadapa districts.

Surface runoff/ Inundation may occur at some fully saturated soils & low-lying areas over Area of Concern (AoC) as shown in map due to expected rainfall occurrence in next 24 hours.

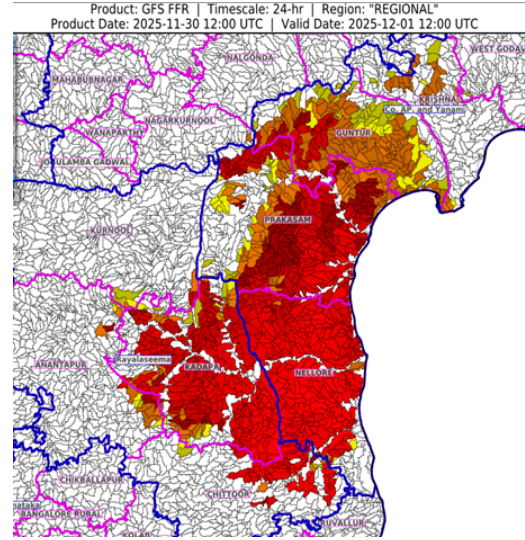




Table-1

7 Days Rainfall Forecast

S.No.	Subdivision	30- Nov	1- Dec	2- Dec	3- Dec	4- Dec	5- Dec	6- Dec
		Day 1	Day 2	Day 3	Day 4	Day 5	Day 6	Day 7
1	ANDAMAN & NICOBAR ISLANDS	ISOL	ISOL	ISOL	ISOL	ISOL	SCT	SCT
2	ARUNACHAL PRADESH	DRY	DRY	DRY	DRY	DRY	DRY	DRY
3	ASSAM & MEHGHALAYA	DRY	DRY	DRY	DRY	DRY	DRY	DRY
4	N. M. M. & T.	DRY	DRY	DRY	DRY	DRY	DRY	DRY
5	S.H. WEST BENGAL & SIKKIM	ISOL	DRY	ISOL	ISOL	DRY	DRY	DRY
6	GANGETIC WEST BENGAL	DRY	DRY	DRY	DRY	DRY	DRY	DRY
7	ODISHA	ISOL	ISOL	DRY	DRY	DRY	DRY	DRY
8	JHARKHAND	DRY	DRY	DRY	DRY	DRY	DRY	DRY
9	BIHAR	DRY	DRY	DRY	DRY	DRY	DRY	DRY
10	EAST UTTAR PRADESH	DRY	DRY	DRY	DRY	DRY	DRY	DRY
11	WEST UTTAR PRADESH	DRY	DRY	DRY	DRY	DRY	DRY	DRY
12	UTTARAKHAND	DRY	DRY	DRY	DRY	ISOL	ISOL	ISOL
13	HARYANA, CHD & DELHI	DRY	DRY	DRY	DRY	DRY	DRY	DRY
14	PUNJAB	DRY	DRY	DRY	DRY	DRY	DRY	DRY
15	HIMACHAL PRADESH	DRY	DRY	DRY	DRY	ISOL	ISOL	DRY
16	JAMMU AND KASHMIR AND LADAKH	DRY	DRY	DRY	DRY	DRY	ISOL	DRY
17	WEST RAJASTHAN	DRY	DRY	DRY	DRY	DRY	DRY	DRY
18	EAST RAJASTHAN	DRY	DRY	DRY	DRY	DRY	DRY	DRY
19	WEST MADHYA PRADESH	DRY	DRY	DRY	DRY	DRY	DRY	DRY
20	EAST MADHYA PRADESH	DRY	DRY	DRY	DRY	DRY	DRY	DRY
21	GUJRAT REGION	DRY	DRY	DRY	DRY	DRY	DRY	DRY
22	SAURASHTRA & KUTCH	DRY	DRY	DRY	DRY	DRY	DRY	DRY
23	KONKAN & GOA	DRY	DRY	DRY	DRY	DRY	DRY	DRY
24	MADHYA MAHARASHTRA	DRY	DRY	DRY	DRY	DRY	DRY	DRY
25	MARATHWADA	DRY	DRY	DRY	DRY	DRY	DRY	DRY
26	VIDARBHA	ISOL	ISOL	DRY	DRY	DRY	DRY	DRY
27	CHATTISGARH	ISOL	ISOL	ISOL	DRY	DRY	DRY	DRY
28	COASTAL ANDHRA PRADESH	FWS	FWS	SCT	SCT	ISOL	ISOL	ISOL
29	TELANGANA	SCT	SCT	ISOL	DRY	DRY	DRY	DRY
30	RAYALASEEMA	WS	FWS	SCT	SCT	SCT	ISOL	ISOL
31	TAMILNADU & PUDUCHERRY	SCT	ISOL	ISOL	SCT	SCT	SCT	ISOL
32	COSTAL KARNATAKA	ISOL	DRY	DRY	DRY	ISOL	ISOL	ISOL
33	NORTH INTERIOR KARNATAKA	DRY	DRY	ISOL	ISOL	ISOL	DRY	DRY
34	SOUTH INTERIOR KARNATAKA	SCT	ISOL	ISOL	ISOL	ISOL	ISOL	ISOL
35	KERALA	SCT	SCT	SCT	FWS	FWS	FWS	SCT
36	LAKSHDWEEP	DRY	DRY	SCT	SCT	FWS	FWS	SCT

Legend	Category	%Stations
WS	Widespread/Most Places	76-100
FWS	Fairly Widespread/Many Places	51-75
SCT	Scattered/ A Few Places	26-50
ISOL	Isolated Places	1-25
DRY	No Rain	0

*Red color warning does not mean "Red Alert" Red color warning means "Take Action"
Forecast and warning for any day is valid from 0830 hours IST of day till 0830 hours IST of next day
For more details kindly visit <https://mausam.imd.gov.in> or contact 011-2434-4599

(Service to the nation since 1875)

Fig. 1: Maximum Temperatures Dated 2025-11-30

Fig. 2: Departure of Maximum Temp. Dated 2025-11-30

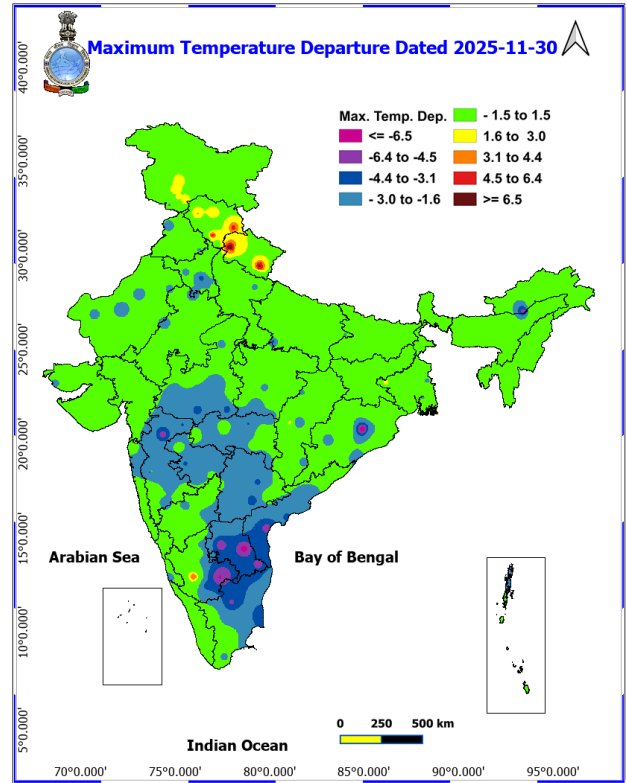
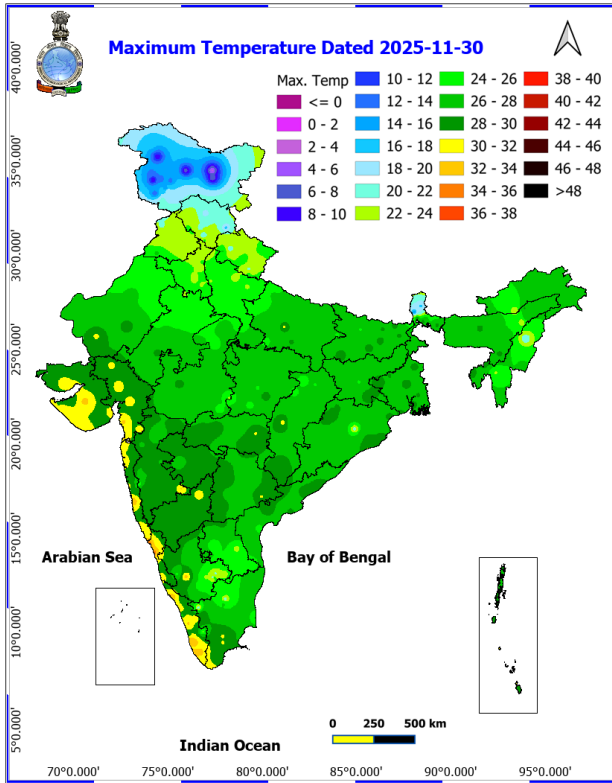
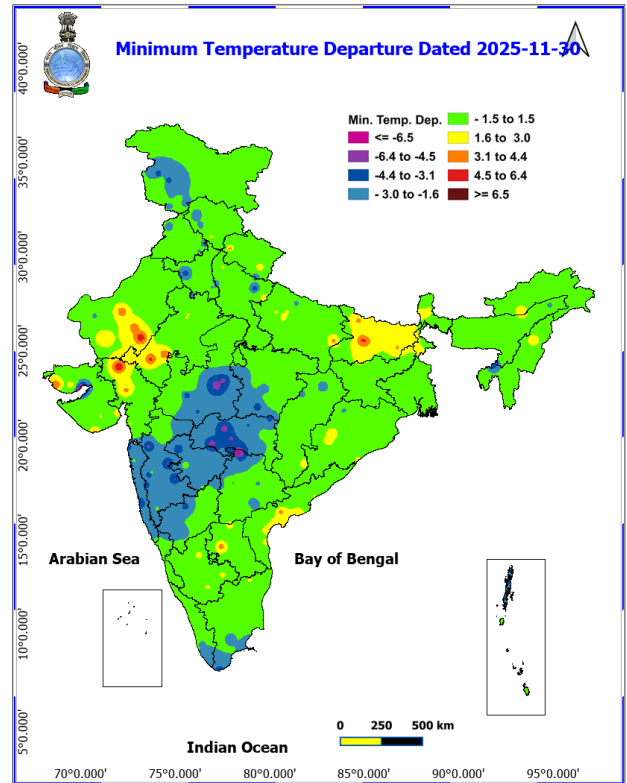
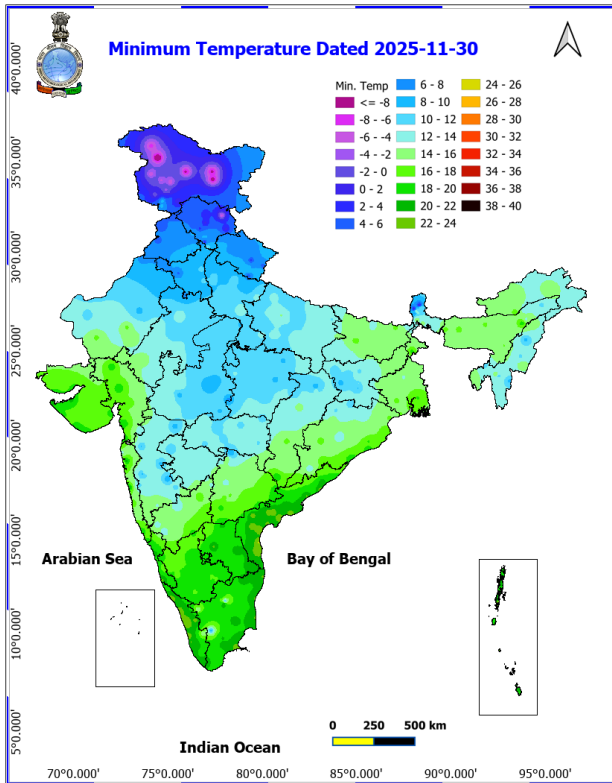
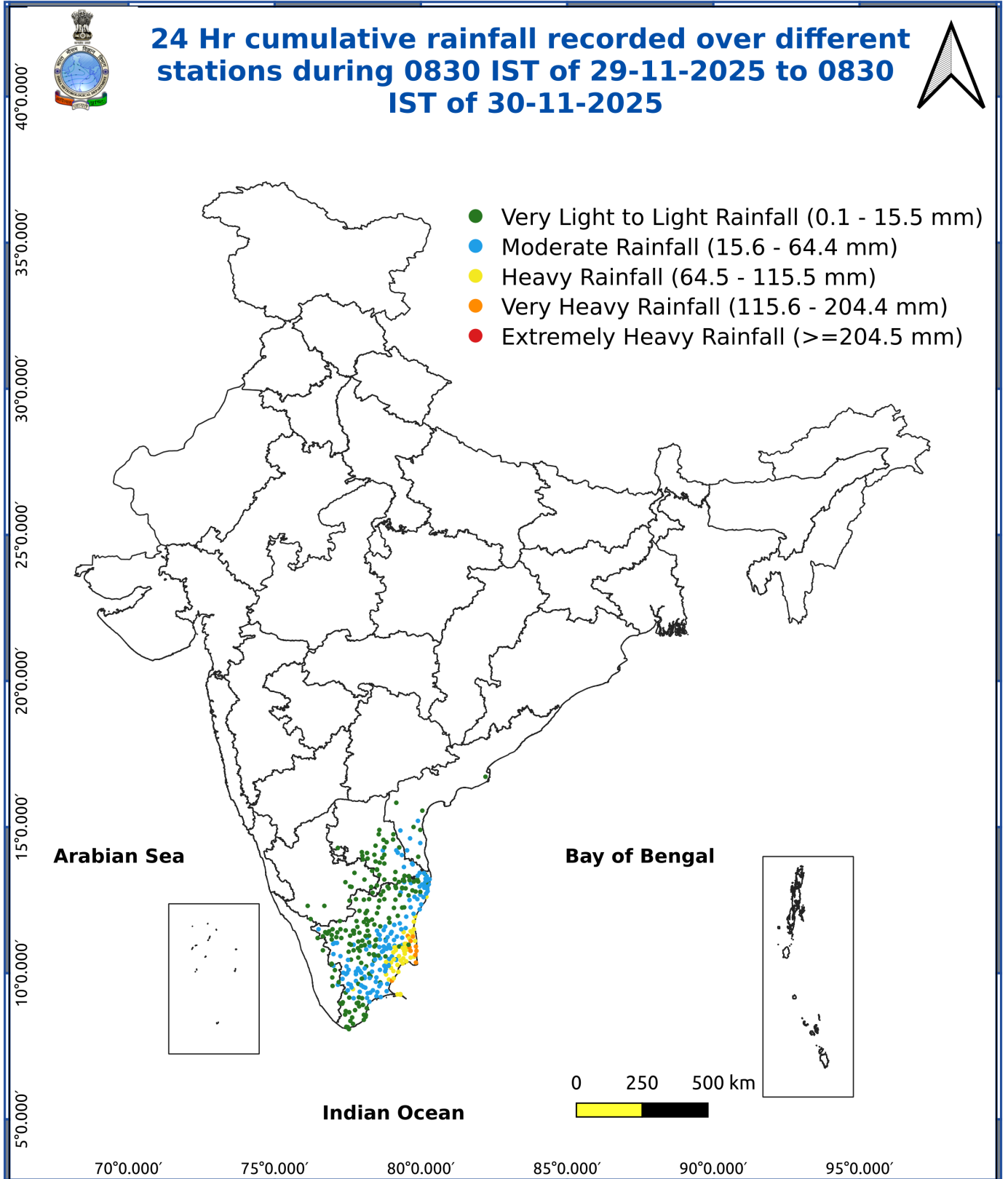


Fig. 3: Minimum Temperatures Dated 2025-11-30

Fig. 4: Departure of Minimum Temp. Dated 2025-11-30





Impact & Action Suggested due to

- **Isolated heavy to very heavy rainfall** likely over Tamil Nadu during 30th November, 2025.

Impact Expected

- Localized Flooding of roads, water logging in low lying areas and closure of underpasses mainly in urban areas of the above region.
- Occasional reduction in visibility due to heavy rainfall.
- Disruption of traffic in major cities due to water logging in roads leading to increased travel time.
- Minor damage to kutchha roads.
- Possibilities of damage to vulnerable structure.
- Localized Landslides/Mudslides/landslips/mudslips/landsinks/mudsinks.
- Damage to horticulture and standing crops in some areas due to inundation.
- It may lead to riverine flooding in some river catchments (for riverine flooding please visit Web page of CWC)

Action Suggested

- Check for traffic congestion on your route before leaving for your destination.
- Follow any traffic advisories that are issued in this regard.
- Avoid going to areas that face the water logging problems often.
- Avoid staying in vulnerable structure.

Agromet advisories for various parts of the country

Agromet advisories for likely impact of Heavy / Heavy to Very Heavy / Extremely Heavy Rainfall

- In **Tamil Nadu**, drain out excess rain water from the fields of rice, groundnut, sugarcane, cotton, black gram, maize and vegetables and plantations of coconut, banana, areca nut, mango, rubber, cinnamon and black pepper. Strengthen irrigation channels and field bunds in rice to avoid crop lodging. Provide support to banana plants with wooden poles to prevent them from falling.
- In **Andhra Pradesh**, provide extensive drainage in *rabi* rice nurseries, transplanted rice, Bengal gram, red gram, maize, jowar, already sown crops of ragi, chickpea, black gram, vegetables and orchards. Keep the harvested produce of rice, maize, groundnut and cotton to safer places. Postpone picking of cotton, harvesting of rice and sowing of ragi, chickpea & black gram.
- In **Kerala**, make necessary arrangements to drain out excess rain water from the fields of rice, vegetables and plantations of banana, coconut, cardamom and black pepper. Carry out propping in banana to prevent their falling due to heavy rainfall. Undertake staking for vegetables grown in pandals.
- In **Telangana**, make necessary arrangements to drain out excess water from rice nurseries, groundnut, Bengal gram, vegetables and fruit orchards.

Livestock / Fishery

- Keep the animals inside the shed during heavy rainfall and provide them balanced feed.
- Store feed and fodder in a safe place to prevent spoilage.
- Construct an outlet with proper netting around the ponds to drain out excess water, thereby preventing fish from escaping in case of overflow.

Agromet advisories for likely impact of Thunderstorm / Gusty Winds

- Provide mechanical support to horticultural crops and staking or support to vegetables and young fruit plants / fruit-bearing plants to avoid lodging due to strong winds.

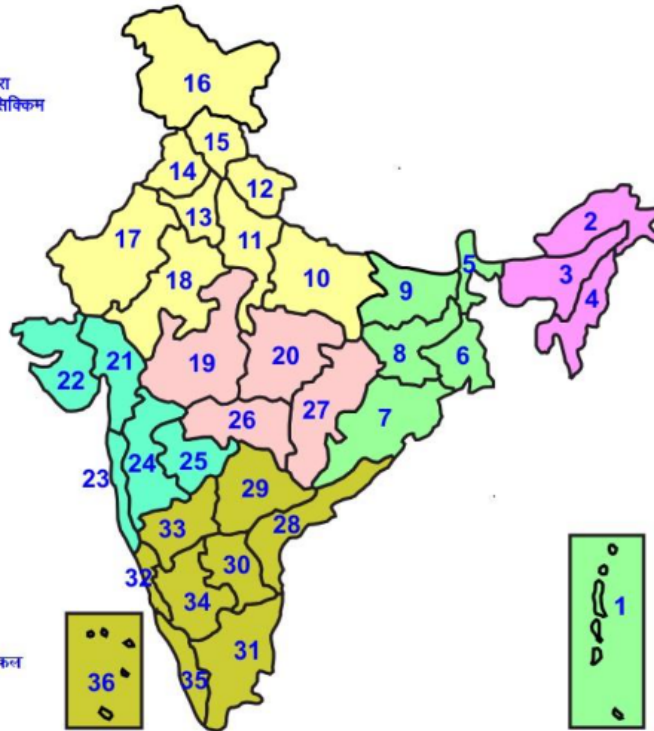
Legends & abbreviations:

Region wise classification of meteorological Sub-Divisions:

- **Northwest India:** Western Himalayan Region (Jammu-Kashmir-Ladakh-Gilgit-Baltistan-Muzaffarabad, Himachal Pradesh and Uttarakhand); Punjab, Haryana-Chandigarh-Delhi; West Uttar Pradesh, East Uttar Pradesh, West Rajasthan and East Rajasthan.
- **Central India:** West Madhya Pradesh, East Madhya Pradesh, Vidarbha and Chhattisgarh.
- **East India:** Bihar, Jharkhand, Sub-Himalayan West Bengal & Sikkim; Gangetic West Bengal, Odisha and Andaman & Nicobar Islands.
- **Northeast India:** Arunachal Pradesh, Assam & Meghalaya and Nagaland, Manipur, Mizoram & Tripura.
- **West India:** Gujarat Region, Saurashtra & Kutch, Konkan & Goa, Madhya Maharashtra and Marathawada.
- **South India:** Coastal Andhra Pradesh & Yanam, Telangana, Rayalaseema, Coastal Karnataka, North Interior Karnataka, South Interior Karnataka, Kerala & Mahe, Tamil Nadu, Puducherry & Karaikal and Lakshadweep.

LEGENDS

- 1 अंडमान और निकोबार द्वीप समुह
- 2 अरुणाचल प्रदेश
- 3 असम और मेघालय
- 4 नागालैंड मनीपुर मीजोरम और त्रिपुरा
- 5 उप हिमालय पश्चिम बंगाल एवं सिक्किम
- 6 पश्चिम बंगाल
- 7 ओडिसा
- 8 झारखंड
- 9 बिहार
- 10 पूर्वी उत्तर प्रदेश
- 11 पश्चिम उत्तर प्रदेश
- 12 उत्तराखंड
- 13 हरियाणा चंडिगढ़ एवं दिल्ली
- 14 पंजाब
- 15 हिमाचल प्रदेश
- 16 जम्मू एवं कश्मीर एवं लद्दाख
- 17 पश्चिम राजस्थान
- 18 पूर्वी राजस्थान
- 19 पश्चिम मध्य प्रदेश
- 20 पूर्वी मध्य प्रदेश
- 21 गुजरात क्षेत्र
- 22 सौराष्ट्र एवं कच्छ
- 23 कोंकण एवं गोवा
- 24 मध्य महाराष्ट्र
- 25 मराठावाडा
- 26 विदर्भ
- 27 छत्तीसगढ़
- 28 तटीय आंध्र प्रदेश एवं यनम
- 29 तेलंगाना
- 30 रायलसीमा
- 31 तमिलनाडु, पुदुचेरी एवं कराईकल
- 32 तटिय कर्नाटक
- 33 आंतरिक उत्तरी कर्नाटक
- 34 आंतरिक दक्षिणी कर्नाटक
- 35 केरल एवं माहे
- 36 लक्षद्वीप



1. Andaman & Nicobar Islands
2. Arunachal Pradesh
3. Assam & Meghalaya
4. Nagaland, Manipur, Mizoram & Tripura
5. Sub-Himalayan West Bengal & Sikkim
6. Gangetic West Bengal
7. Orissa
8. Jharkhand
9. Bihar
10. East Uttar Pradesh
11. West Uttar Pradesh
12. Uttarakhand
13. Haryana, Chd & Delhi
14. Punjab
15. Himachal Pradesh
16. Jammu & Kashmir and Ladakh
17. West Rajasthan
18. East Rajasthan
19. West Madhya Pradesh
20. East Madhya Pradesh
21. Gujarat
22. Saurashtra
23. Konkan & Goa
24. Madhya Maharashtra
25. Marathawada
26. Vidharbha
27. Chhattisgarh
28. Coastal Andhra Pradesh & Yanam
29. Telangana
30. Rayalaseema
31. Tamilnadu, Puducherry & Karaikal
32. Coastal Karnataka
33. North Interior Karnataka
34. South Interior Karnataka
35. Kerala & Mahe
36. Lakshadweep

SPATIAL DISTRIBUTION (% of Stations reporting)

% Stations	Category	% Stations	Category
76-100	Widespread (WS/ Most Places)	26-50	Scattered (SCT/ A Few Places)
51-75	Fairly Widespread (FWS/ Many Places)	1-25	Isolated (ISOL)

Subdivision Colour

- NO WARNING
- WATCH (BE UPDATED)
- ALERT (BE PREPARED TO TAKE ACTION)
- WARNING (TAKE ACTION)

Probabilistic Forecast

Terms	Probability of Occurrence (%)
Unlikely	< 25
Likely	25 - 50
Very Likely	50 - 75
Most Likely	> 75

- | | | | |
|--------------------------|-----------------|----------------------|--------------------|
| Heavy Rain | Very Heavy Rain | Extremely Heavy Rain | Heavy Snow |
| Thunderstorm & Lightning | Hailstorm | Dust Storm | Dust Raising Winds |
| Strong surface winds | Heat Wave | Hot Day | Warm Night |
| Cold Wave | Cold Day | Ground Frost | Fog |
| Hot & Humid | | | |

*Red color warning does not mean "Red Alert" Red color warning means "Take Action"

Forecast and warning for any day is valid from 0830 hours IST of day till 0830 hours IST of next day

For more details kindly visit <https://mausam.imd.gov.in> or contact 011-2434-4599

(Service to the nation since 1875)

LEGENDS

WARNING

WARNING (TAKE ACTION)
ALERT (BE PREPARED)
WATCH (BE UPDATED)
NO WARNING (NO ACTION)

Probabilistic Forecast

Terms	Probability of Occurrence (%)
Unlikely	< 25
Likely	25 - 50
Very Likely	50 - 75
Most Likely	> 75



Heavy: 64.5 to 115.5 mm/cm *
Very Heavy: 115.6 to 204.4 mm/cm*
Extremely Heavy: > 204.4 mm/cm *



When maximum temperature of a station reaches $\geq 40^{\circ}\text{C}$ for plains and $\geq 30^{\circ}\text{C}$ for hilly regions
(a) Based on Departure from normal

Heat Wave: Maximum Temperature Departure from normal 4.5°C to 6.4°C .
Severe Heat Wave: Maximum Temperature Departure from normal $\geq 6.5^{\circ}\text{C}$

(b). Based on Actual maximum temperature

Heat Wave: When actual maximum temperature $\geq 45^{\circ}\text{C}$.
Severe Heat Wave: When actual maximum temperature $\geq 47^{\circ}\text{C}$

(c). Criteria for heat wave for coastal stations

When maximum temperature departure is $> 4.5^{\circ}\text{C}$ from normal. Heat Wave may be described provided maximum temperature $\geq 37^{\circ}\text{C}$



When maximum temperature remains 40°C

Warm Night: When minimum temperature departure 4.5°C to 6.4°C .
Severe Warm Night: When minimum temperature departure $> 6.4^{\circ}\text{C}$.



When minimum temperature of a station $\leq 10^{\circ}\text{C}$ for plains and $\leq 0^{\circ}\text{C}$ for hilly regions.

(a). Based on departure

Cold Wave: Minimum Temperature Departure from normal -4.5°C to -6.4°C .
Severe Cold Wave: Minimum Temperature Departure from normal $\leq -6.5^{\circ}\text{C}$

(b) Based on actual Minimum Temperature (for Plains only)

Cold Wave : When Minimum Temperature is $\leq 4.0^{\circ}\text{C}$
Severe Cold Wave: When Minimum Temperature is $\leq 2.0^{\circ}\text{C}$

(c) For Coastal Stations

When Minimum Temperature departure is $\leq -4.5^{\circ}\text{C}$ & actual Minimum Temperature is $\leq 15^{\circ}\text{C}$



When minimum temperature of a station $\leq 10^{\circ}\text{C}$ for plains and $\leq 0^{\circ}\text{C}$ for hilly regions
Based on departure

Cold Day: Maximum Temperature Departure from normal -4.5°C to -6.4°C .
Severe Cold Day: Maximum Temperature Departure from normal $\leq -6.5^{\circ}\text{C}$



Phenomenon of small droplets suspended in air and the horizontal visibility $< 1\text{km}$

Moderate Fog: When the visibility between 500-200 metres
Dense Fog: when the visibility between 50- 200 metres
Very Dense Fog: when the visibility < 50 metres



Sudden electrical discharges manifested by a flash of light (Lightning) and a sharp rumbling sound (thunder)



An ensemble of particles of dust or sand energetically lifted to great heights by a strong and turbulent wind.



Ice deposits on ground

Air temperature $\leq 4^{\circ}\text{C}$ (over Plains)



A strong wind that rises suddenly, lasts for atleast 1 minute.

Moderate: Wind speed 52-61 kmph
Severe: Wind speed 62-87 kmph
Very Severe: Wind speed > 87 kmph



Effect of various waves in the sea over specific area

Rough to very rough: Wind speed 41-62 kmph (22-33 knots) & Wave height 2.5-6 metre
High to very high: Wind speed 63-117 kmph (34-63 knots) & Wave height 6-14 metre
Phenomenal: Wind speed > 117 kmph (> 63 knots) & Wave height > 14 metre



Cyclonic Storm: Wind speed 62-87 kmph (34-47 knots)
Severe Cyclonic Storm: Wind speed 88-117 kmph (48-63 knots)
Very Severe Cyclonic Storm: Wind speed 118-165 kmph (64 - 89 knots)
Extremely Severe Cyclonic Storm: Wind speed 166-220 kmph (90 -119 knots)
Super Cyclone Storm: Wind speed > 220 kmph (> 119 knots)

*Red color warning does not mean "Red Alert" Red color warning means "Take Action"

Forecast and warning for any day is valid from 0830 hours IST of day till 0830 hours IST of next day

For more details kindly visit <https://mausam.imd.gov.in> or contact 011-2434-4599

(Service to the nation since 1875)