

2025-09-13

Time of Issue: 13:33:00 hours IST
(Mid-Day)

ALL INDIA WEATHER SUMMARY AND FORECAST BULLETIN

Significant Weather Features

Northeast India:

Light/moderate rain/thunderstorm at most/many places with isolated **heavy rainfall** likely over Arunachal Pradesh during 13th-18th; Assam & Meghalaya, Nagaland, Manipur, Mizoram & Tripura during 13th-16th & on 18th, 19th September with **very heavy falls over Arunachal Pradesh during 13th -16th; Nagaland, Manipur, Mizoram & Tripura on 13th and Assam & Meghalaya on 14th & 15th September.**

South Peninsular India:

Light to moderate rain/thunderstorm & gusty winds (speed 30-40 kmph) at many/some places with isolated **heavy rainfall** likely over Tamil Nadu on 13th & during 16th-19th; Coastal Andhra Pradesh & Yanam on 13th & 14th; Rayalaseema on 13th; Telangana during 13th-17th; North Interior Karnataka during 13th-16th September with **very heavy falls over Telangana on 13th September.**

Strong surface winds (speed reaching 30-50 kmph) very likely over Coastal Andhra Pradesh & Yanam and Rayalaseema during next 5 days.

East & Central India:

Light to moderate rain/thunderstorm at most/many places with isolated **heavy rainfall** likely over West Madhya Pradesh during 14th-16th; East Madhya Pradesh, Vidarbha & Odisha during 13th-15th; Chhattisgarh during 13th-16th; Andaman & Nicobar Islands on 14th & during 17th-19th; Sub-Himalayan West Bengal & Sikkim during 13th-19th; Bihar during 13th-17th; Jharkhand during 15th-17th September with isolated **very heavy falls over Sub-Himalayan West Bengal & Sikkim on 13th & 14th and Bihar during 14th-16th September.**

West India:

Light to moderate rain/thunderstorm at many/some places with **isolated heavy rainfall** likely over Konkan & Goa, Madhya Maharashtra & Marathwada during 13th-15th September with **very heavy falls over Konkan & Goa on 14th & 15th and Madhya Maharashtra on 15th September.**

Northwest India:

Light to moderate rain/thunderstorm at some/isolated places with **isolated heavy rainfall** likely over Himachal Pradesh on 13th & 14th; Uttarakhand during 13th-16th; north Punjab on 13th; East Uttar Pradesh during 15th-19th September with **very heavy falls over Uttarakhand on 13th September.**

*Red color warning does not mean "Red Alert" Red color warning means "Take Action"

Forecast and warning for any day is valid from 0830 hours IST of day till 0830 hours IST of next day

For more details kindly visit <https://mausam.imd.gov.in> or contact 011-2434-4599

(Service to the nation since 1875)

Main Weather Observations:

❖ **Rainfall distribution** (from 0830 hours IST of yesterday to 0830 hours IST of today): **at most places** over Nagaland, Manipur, Mizoram & Tripura, Sub Himalayan West Bengal & Sikkim and Vidarbha; **at many places** over Arunachal Pradesh, Assam & Meghalaya, Odisha, Uttarakhand, Marathwada, Chhattisgarh, Coastal Andhra Pradesh & Yanam, Telangana and North Interior Karnataka; **at a few places** over Gangetic West Bengal, Himachal Pradesh, East Madhya Pradesh, Konkan & Goa, Madhya Maharashtra, Jharkhand and Rayalaseema; **at isolated places** over Andaman & Nicobar Islands, Bihar, East Uttar Pradesh, West Uttar Pradesh, Haryana-Chandigarh-Delhi, Punjab, Jammu-Kashmir-Ladakh-Gilgit-Baltistan-Muzaffarabad, East Rajasthan, West Madhya Pradesh, Gujarat Region, Saurashtra & Kutch, Tamil Nadu, Puducherry & Karaikal, Coastal Karnataka, South Interior Karnataka and Kerala & Mahe; **Dry** over rest of the country.

❖ **Significant rainfall recorded(in cm)** (from 0830 hours IST of yesterday to 0830 hours IST of today): **Uttarakhand**: Haripur (dist Dehradun) 25; Narendranagar (dist Garhwal Tehri) 23; Mussoorie (dist Dehradun) 19; Sama (dist Bageshwar), Jollygrant (dist Dehradun) 11 Each; Hardwar (dist Hardwar), Rishikesh (dist Dehradun) 8 Each; **Sub Himalayan West Bengal & Sikkim**: Barobhisha (dist Alipurduar), Chel (dist Jalpaiguri) 16 Each; Buxaduar (dist Alipurduar), Hilla T.e. (dist Jalpaiguri) 14 Each; Mekhliganj (dist Cooch Behar), Chepan (dist Alipurduar) 13 Each; Amfu Pundibari (dist Cooch Behar) 11; Falakata (dist Alipurduar), Ghish (dist Jalpaiguri), Leesh River Tea Garden (dist Jalpaiguri) 10 Each; Washabari Tea Estate (dist Jalpaiguri), Dalgaon Tea Estate (dist Alipurduar) 9 Each; Ghughumari (dist Cooch Behar), Bhagatpur Tea Estate (dist Jalpaiguri), Diana Tea Estate (dist Jalpaiguri), Ghatia T.e. (dist Jalpaiguri), Kurti T.e. (dist Jalpaiguri) 8 Each; Chengmari/Diana (dist Jalpaiguri), Raidak Tea Estate (dist Alipurduar), Kumargram (dist Alipurduar) 7 Each; **Marathwada**: Purna (dist Parbhani) 16; Palam (dist Parbhani) 11; **East Madhya Pradesh**: Bilhari (dist Katni) 10; Lalburra (dist Balaghat) 9; **Vidarbha**: Hinganghat (dist Wardha) 9; Warora (dist Chandrapur) 8; **Himachal Pradesh**: Palampur (dist Kangra) 9; **Telangana**: Kollapur (dist Nagarkurnool), Jakranpalle (dist Nizamabad) 9 Each; Kasipet (dist Mancherla) 8; Navipet (dist Nizamabad), Dhar Palle (dist Nizamabad) 7 Each; **Assam & Meghalaya**: Jiagaon (dist Tinsukia), Gossaigaon AWS (dist Kokrajhar), Dhubri IMD (dist Dhubri) 8 Each; **Tamil Nadu, Puducherry & Karaikal**: Vilupuram (dist Villupuram) 7; **North Interior Karnataka**: Dharwad PTO (dist Dharwad) 7; **West Uttar Pradesh**: Najibabad (t) (dist Bijnor) 7; **Bihar**: Sikta (dist West Champaran) 7; **Jharkhand**: Tilaiya (dist Koderma) 7; **Odisha**: Bhapur (dist Nayagarh) 7.

❖ **Heavy Rainfall observed** (from 0830 hours IST of yesterday to 0830 hours IST of today): **Extremely heavy rain** at isolated places over Uttarakhand. **Heavy to very heavy rain** at isolated places over Sub Himalayan West Bengal & Sikkim, Uttarakhand and Marathwada. **Heavy rain** at isolated places over Assam & Meghalaya, Odisha, Bihar, West Uttar Pradesh, Himachal Pradesh, East Madhya Pradesh, Vidarbha, Coastal Andhra Pradesh & Yanam, Telangana, Tamil Nadu, Puducherry & Karaikal and North Interior Karnataka.

❖ **Minimum Temperature Departures (as on 13-09-2025)**: **markedly above normal(> 5.1°C)** at isolated places over Assam & Meghalaya, Bihar, East Uttar Pradesh, West Uttar Pradesh, Himachal Pradesh, Jammu-Kashmir-Ladakh-Gilgit-Baltistan-Muzaffarabad, West Madhya Pradesh and East Madhya Pradesh. **appreciably above normal(3.1°C to 5.0°C)** at few places over Sub Himalayan West Bengal & Sikkim; at isolated places over Odisha, West Rajasthan, Gujarat Region and Saurashtra & Kutch. **above normal(1.6°C to 3.0°C)** at few places over Gangetic West Bengal, Madhya Maharashtra, Coastal Karnataka, South Interior Karnataka and Lakshadweep; at isolated places over Jharkhand, Uttarakhand, Haryana-Chandigarh-Delhi, Punjab, Vidarbha, Coastal Andhra Pradesh & Yanam, Tamil Nadu, Puducherry & Karaikal and North Interior Karnataka. **near normal(-1.5°C to 1.5°C)** at many places over Chhattisgarh and Telangana; at most places over Andaman & Nicobar Islands, Arunachal Pradesh, Nagaland, Manipur, Mizoram & Tripura, East Rajasthan, Konkan & Goa, Marathwada, Rayalaseema and Kerala & Mahe. **The lowest minimum temperature** of 17.0°C is reported at DHARWAD (KARNATAKA) over the Plains of India.

❖ **Maximum Temperature Departures (as on 12-09-2025)**: **markedly above normal(> 5.1°C)** at isolated places over Odisha. **appreciably above normal(3.1°C to 5.0°C)** at isolated places over Sub Himalayan West Bengal & Sikkim, Gangetic West Bengal, Bihar, Himachal Pradesh, Jammu-Kashmir-Ladakh-Gilgit-Baltistan-Muzaffarabad, Chhattisgarh, Tamil Nadu, Puducherry & Karaikal and Kerala & Mahe. **above normal(1.6°C to 3.0°C)** at few places over Arunachal Pradesh, Jharkhand, East Uttar Pradesh, East Madhya Pradesh and Lakshadweep; at isolated places over Assam & Meghalaya, East Rajasthan, West Madhya Pradesh, Konkan & Goa, Madhya Maharashtra, Vidarbha, Rayalaseema and South Interior Karnataka. **near normal(-1.5°C to 1.5°C)** at many places over Nagaland, Manipur, Mizoram &

*Red color warning does not mean "Red Alert" Red color warning means "Take Action"

Forecast and warning for any day is valid from 0830 hours IST of day till 0830 hours IST of next day

For more details kindly visit <https://mausam.imd.gov.in> or contact 011-2434-4599

(Service to the nation since 1875)



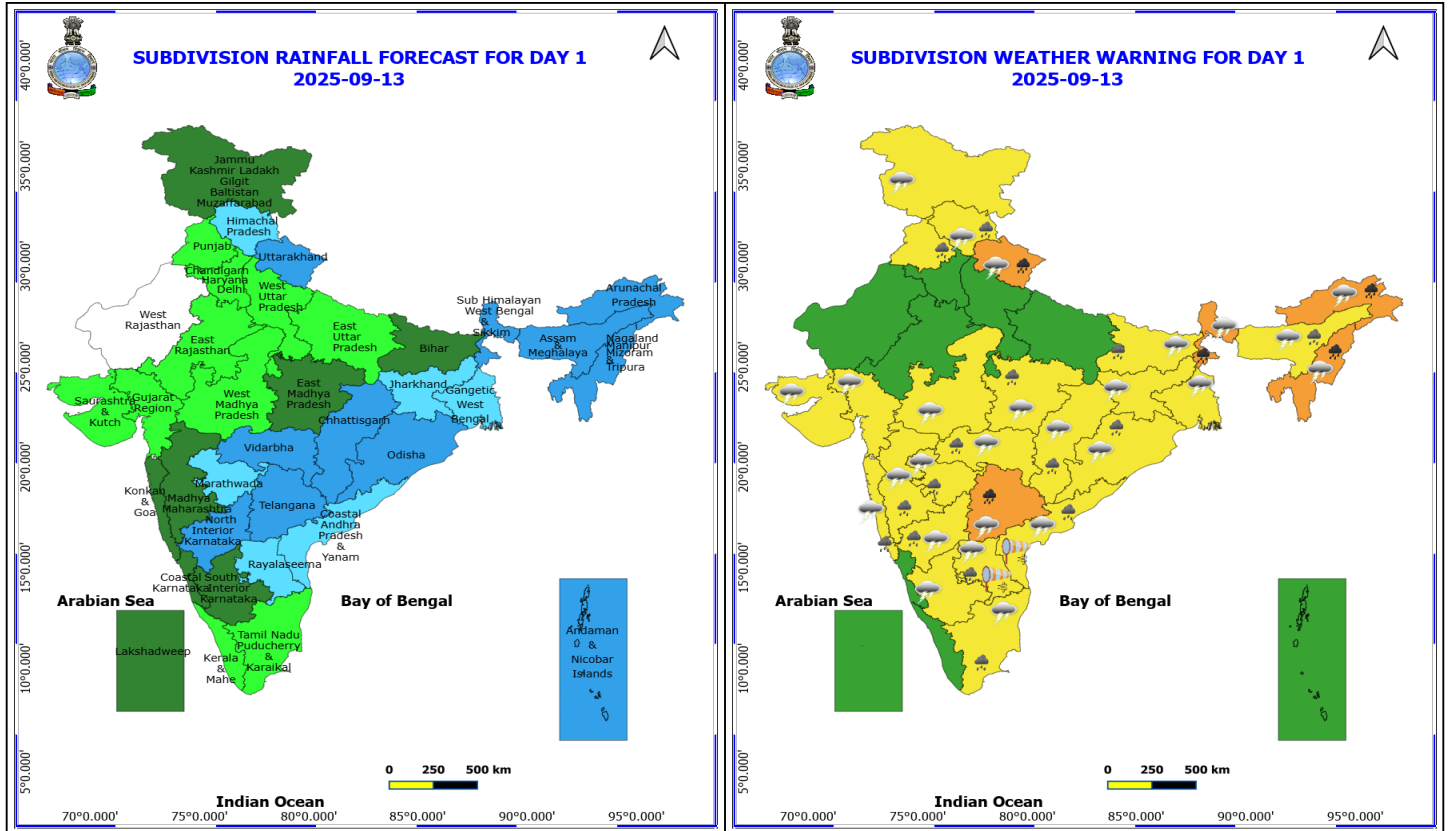
Tripura and West Rajasthan; at most places over Andaman & Nicobar Islands, West Uttar Pradesh, Haryana-Chandigarh-Delhi, Punjab, Gujarat Region, Saurashtra & Kutch and Coastal Karnataka; at few places over Uttarakhand and Marathwada; at isolated places over Coastal Andhra Pradesh & Yanam and North Interior Karnataka. **The highest maximum temperature** of 37.8°C is reported at PALAYAMKOTTAI (TAMIL NADU).

Meteorological Analysis (Based on 0830 hours IST)

- Conditions are becoming favourable for withdrawal of Southwest Monsoon from some parts of West Rajasthan around from 15th September.
- The **low pressure area** over westcentral & adjoining northwest Bay of Bengal, north Andhra Pradesh-south Odisha coasts persisted at 0830 hrs IST of today, the 13th September, 2025. The associated **cyclonic circulation** extended up to 5.8 km above mean sea level tilting southwestwards with height. It is likely to move west-northwestwards across south Odisha and adjoining north Andhra Pradesh and south Chhattisgarh during next 2 days.
- The **monsoon trough** at mean sea level now passes through Sri Ganganagar, Rohtak, Seoni, Rajnandgaon and thence to centre of **low pressure area** over westcentral & adjoining northwest Bay of Bengal, north Andhra Pradesh-south Odisha coasts.
- The **upper air cyclonic circulation** over southwest Bihar & adjoining Jharkhand at 0.9 km above mean sea level persisted.
- The **trough** from **cyclonic circulation** associated with **low pressure area** over westcentral & adjoining northwest Bay of Bengal, north Andhra Pradesh-south Odisha coasts to South Maharashtra across Chhattisgarh & Vidarbha extended between 3.1 and 5.8 km above mean sea level tilting southwestwards with height.
- The **cyclonic circulation** over northwest Arabian Sea extending upto 5.8 km above mean sea level persisted.
- The **upper air cyclonic circulation** over East Rajasthan & neighbourhood lay over Northeast Rajasthan & neighbourhood between 3.1 & 4.5 km above mean sea level.
- An **upper air cyclonic circulation** lay over central Assam at 3.1 km above mean sea level.
- A **trough** runs from South Interior Karnataka to Gulf of Mannar across Tamil Nadu at 0.9 km above mean sea level.
- The **upper air cyclonic circulation** over Tripura & neighbourhood at 1.5 km above mean sea level has become less marked.
- The **western disturbance** as a **cyclonic circulation** over Himachal Pradesh & neighbourhood at 5.8 km above mean sea level has become less marked.

Weather Outlook for subsequent 3 days

- Scattered to fairly widespread rainfall likely over Western India.
- Isolated to scattered rainfall likely over the rest parts of the country.



13 September (Day 1)

- ❖ **Heavy to Very Heavy Rainfall** very likely at isolated places over Arunachal Pradesh, Nagaland, Manipur, Mizoram and Tripura, Sub Himalayan West Bengal & Sikkim, Telangana and Uttarakhand.
- ❖ **Heavy Rainfall** very likely at isolated places over Andhra Pradesh, Assam & Meghalaya, Bihar, Chhattisgarh, East Madhya Pradesh, Himachal Pradesh, Konkan & Goa, Maharashtra, North Interior Karnataka, Odisha, Punjab and Tamil Nadu Puducherry & Karaikal.
- ❖ **Thunderstorm accompanied with lightning & gusty winds(40-50kmph)** very likely at isolated places over Coastal Andhra Pradesh.
- ❖ **Thunderstorm accompanied with lightning & gusty winds(30-40kmph)** very likely at isolated places over Jammu-Kashmir-Ladakh-Gilgit-Baltistan-Muzaffarabad and Telangana.
- ❖ **Thunderstorm accompanied with Lightning** very likely at isolated places over Arunachal Pradesh, Assam & Meghalaya, Bihar, Chhattisgarh, Gujarat State, Himachal Pradesh, Interior Karnataka, Jharkhand, Konkan & Goa, Madhya Pradesh, Maharashtra, Nagaland, Manipur, Mizoram and Tripura, Odisha, Rayalaseema, Tamil Nadu Puducherry & Karaikal, Uttarakhand and West Bengal & Sikkim.
- ❖ **Strong Surface Winds** very likely at isolated places over Andhra Pradesh.

Squally wind with speed reaching 45 kmph to 55 kmph gusting to 65 kmph is likely to prevail over some parts of southwest & westcentral Arabian Sea and along and off Somalia coast.

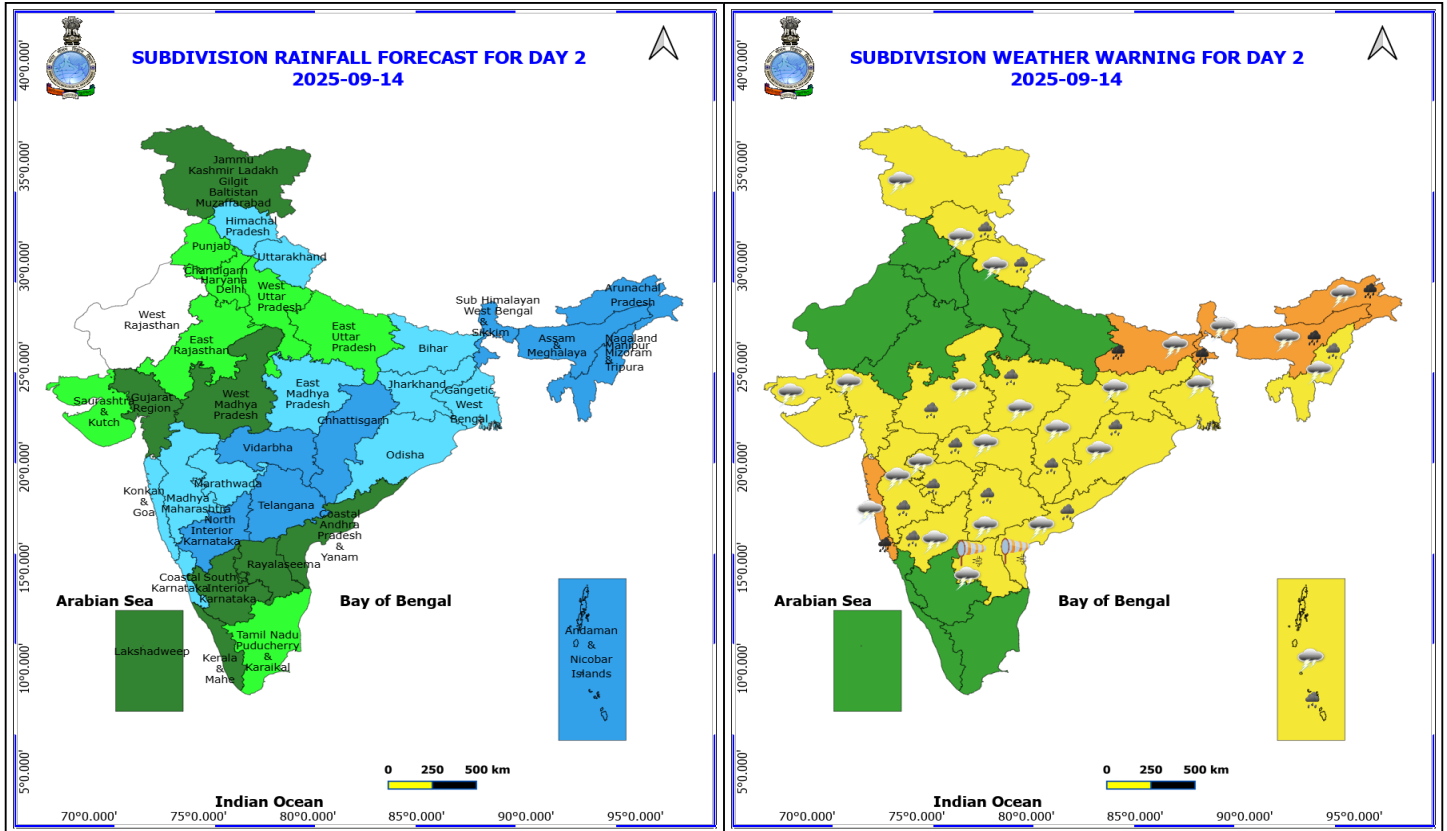
Squally weather with wind speed reaching 40 - 50 kmph gusting to 60 kmph is likely to prevail over westcentral & adjoining northwest Bay of Bengal and along & off Andhra Pradesh - north Tamil Nadu coasts, Gulf of Mannar & adjoining Comorin area and over some parts of southwest Bay of Bengal & along and off south Sri Lanka coast.

***Red color warning does not mean "Red Alert" Red color warning means "Take Action"**

Forecast and warning for any day is valid from 0830 hours IST of day till 0830 hours IST of next day

For more details kindly visit <https://mausam.imd.gov.in> or contact 011-2434-4599

(Service to the nation since 1875)



14 September (Day 2)

- ❖ **Heavy to Very Heavy Rainfall** very likely at isolated places over Arunachal Pradesh, Assam & Meghalaya, Bihar, Konkan & Goa and Sub Himalayan West Bengal & Sikkim.
- ❖ **Heavy Rainfall** very likely at isolated places over Andaman & Nicobar Islands, Chhattisgarh, Coastal Andhra Pradesh, Himachal Pradesh, Madhya Pradesh, Maharashtra, Nagaland, Manipur, Mizoram and Tripura, North Interior Karnataka, Odisha, Telangana and Uttarakhand.
- ❖ **Thunderstorm accompanied with lightning & gusty winds(30-40kmph)** very likely at isolated places over Coastal Andhra Pradesh, Jammu-Kashmir-Ladakh-Gilgit-Baltistan-Muzaffarabad and Telangana.
- ❖ **Thunderstorm accompanied with Lightning** very likely at isolated places over Andaman & Nicobar Islands, Arunachal Pradesh, Assam & Meghalaya, Bihar, Chhattisgarh, Gujarat State, Himachal Pradesh, Jharkhand, Konkan & Goa, Madhya Pradesh, Maharashtra, Nagaland, Manipur, Mizoram and Tripura, North Interior Karnataka, Odisha, Rayalaseema, Uttarakhand and West Bengal & Sikkim.
- ❖ **Strong Surface Winds** very likely at isolated places over Andhra Pradesh.

Squally wind with speed reaching 45 kmph to 55 kmph gusting to 65 kmph is likely to prevail over some parts of southwest & westcentral Arabian Sea and along and off Somalia coast.

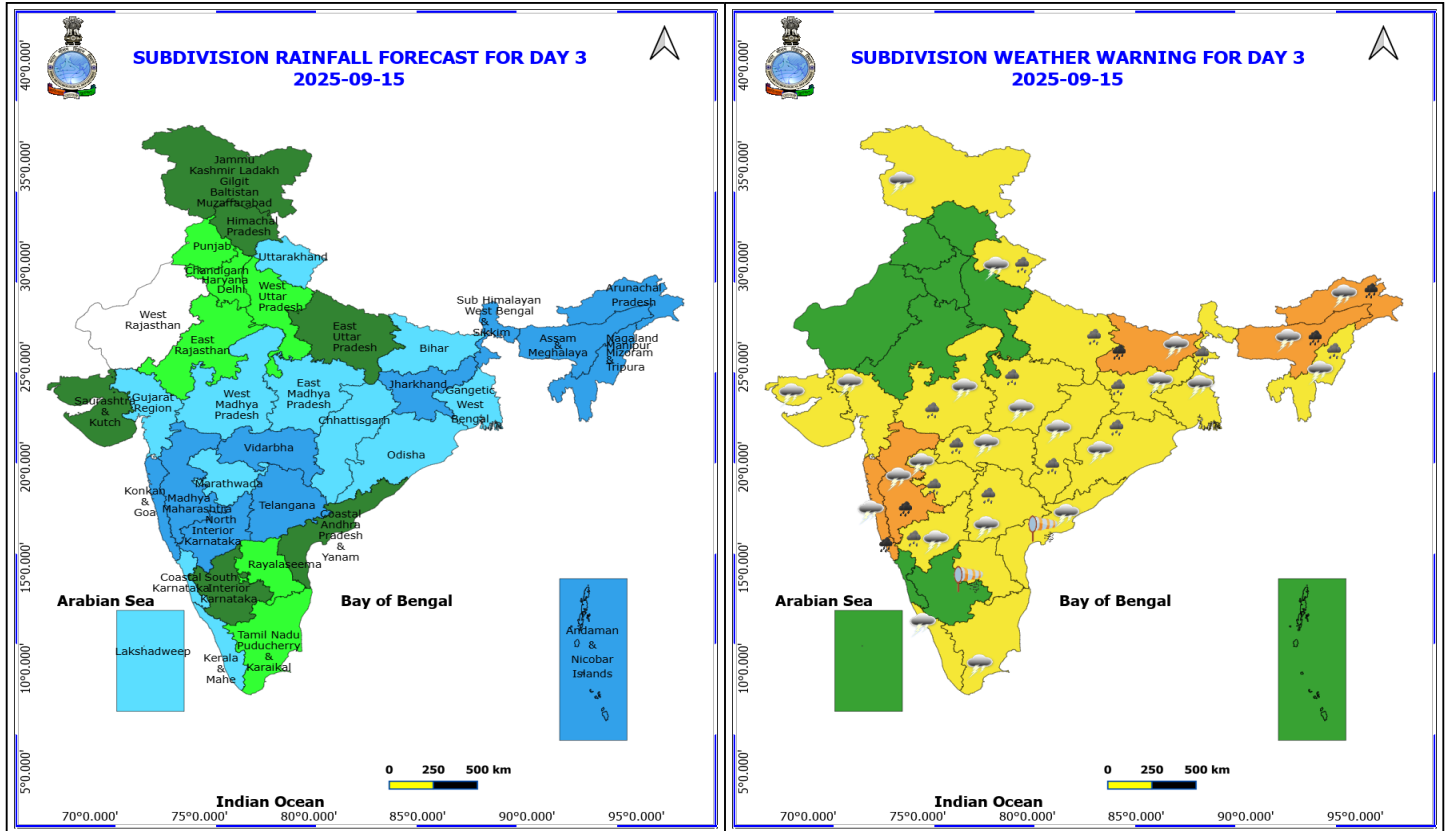
Squally weather with wind speed reaching 40 - 50 kmph gusting to 60 kmph is likely to prevail over Gulf of Mannar & adjoining Comorin area and over some parts of southwest Bay of Bengal & along and off south Sri Lanka coast.

***Red color warning does not mean "Red Alert" Red color warning means "Take Action"**

Forecast and warning for any day is valid from 0830 hours IST of day till 0830 hours IST of next day

For more details kindly visit <https://mausam.imd.gov.in> or contact 011-2434-4599

(Service to the nation since 1875)



15 September (Day 3)

- ❖ **Heavy to Very Heavy Rainfall** very likely at isolated places over Arunachal Pradesh, Assam & Meghalaya, Bihar, Konkan & Goa and Madhya Maharashtra.
- ❖ **Heavy Rainfall** very likely at isolated places over Chhattisgarh, East Uttar Pradesh, Jharkhand, Madhya Pradesh, Marathwada, Nagaland, Manipur, Mizoram and Tripura, North Interior Karnataka, Odisha, Sub Himalayan West Bengal & Sikkim, Telangana, Uttarakhand and Vidarbha.
- ❖ **Thunderstorm accompanied with lightning & gusty winds(30-40kmph)** very likely at isolated places over Coastal Andhra Pradesh, Jammu-Kashmir-Ladakh-Gilgit-Baltistan-Muzaffarabad and Telangana.
- ❖ **Thunderstorm accompanied with Lightning** very likely at isolated places over Arunachal Pradesh, Assam & Meghalaya, Bihar, Chhattisgarh, Gangetic West Bengal, Gujarat State, Jharkhand, Kerala & Mahe, Konkan & Goa, Madhya Pradesh, Maharashtra, Nagaland, Manipur, Mizoram and Tripura, North Interior Karnataka, Odisha, Tamil Nadu Puducherry & Karaikal and Uttarakhand.
- ❖ **Strong Surface Winds** very likely at isolated places over Andhra Pradesh.

Squally wind with speed reaching 45 kmph to 55 kmph gusting to 65 kmph is likely to prevail over some parts of southwest & westcentral Arabian Sea and along and off Somalia coast.

Squally weather with wind speed reaching 45 - 55 kmph gusting to 65 kmph likely to prevail over few parts of eastcentral Arabian Sea and along & off Konkan-Goa coasts.

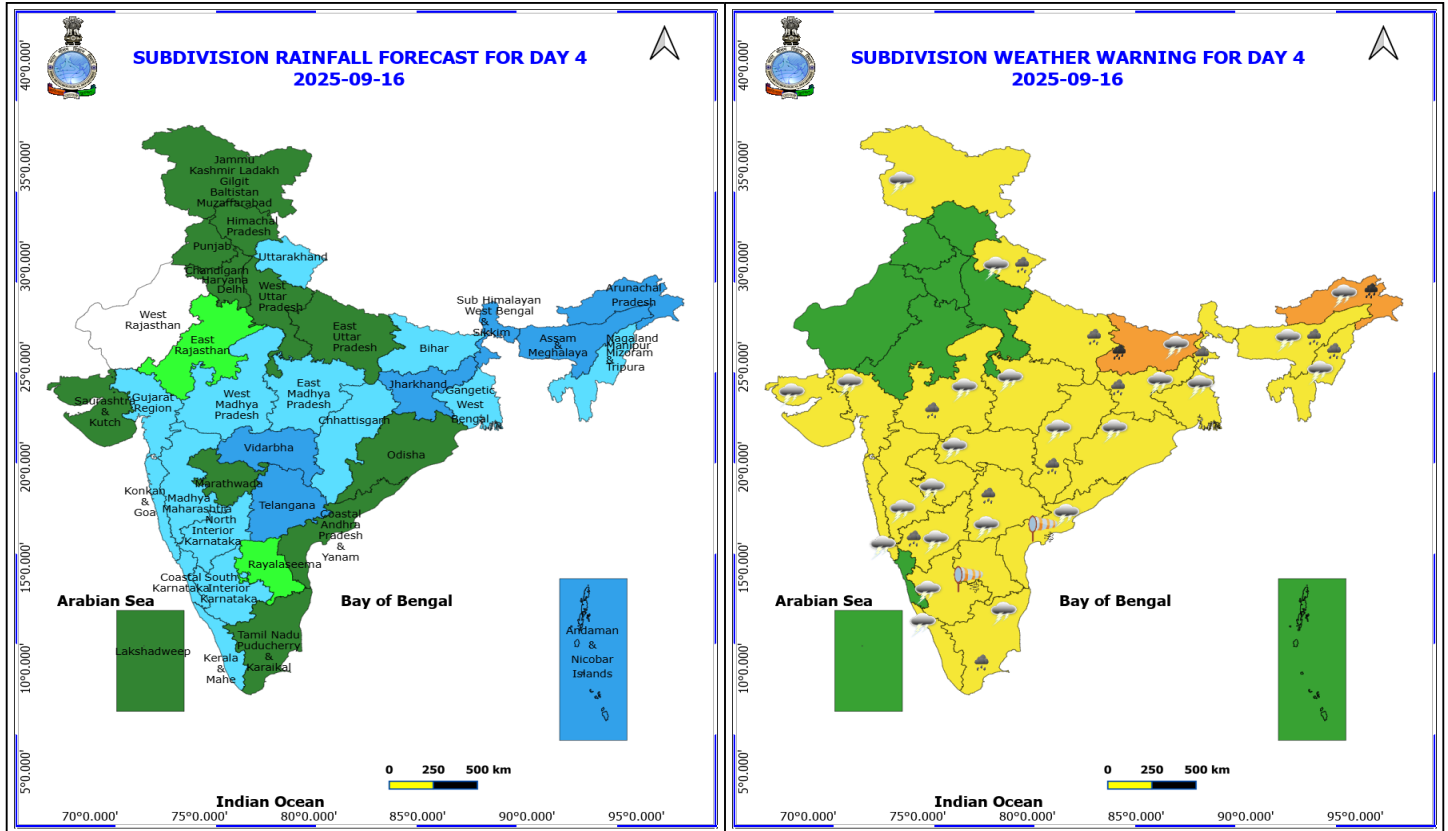
Squally weather with wind speed reaching 40 - 50 kmph gusting to 60 kmph likely to prevail over Gulf of Mannar & adjoining Comorin area and over some parts of southwest Bay of Bengal & along and off south Sri Lanka coast.

***Red color warning does not mean "Red Alert" Red color warning means "Take Action"**

Forecast and warning for any day is valid from 0830 hours IST of day till 0830 hours IST of next day

For more details kindly visit <https://mausam.imd.gov.in> or contact 011-2434-4599

(Service to the nation since 1875)

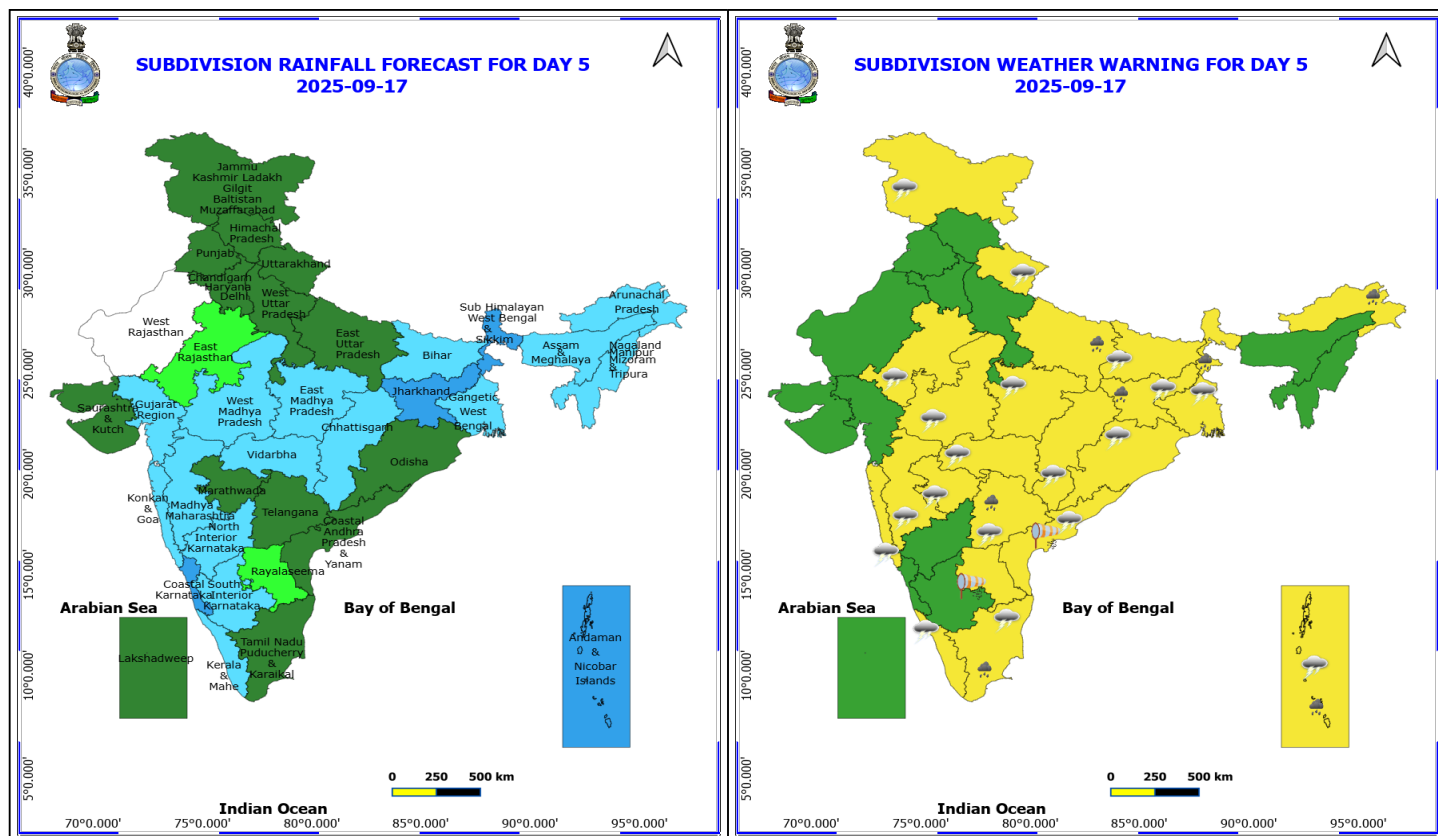


16 September (Day 4)

- ❖ **Heavy to Very Heavy Rainfall** likely at isolated places over Arunachal Pradesh and Bihar.
- ❖ **Heavy Rainfall** likely at isolated places over Assam & Meghalaya, Chhattisgarh, East Uttar Pradesh, Jharkhand, Nagaland, Manipur, Mizoram and Tripura, North Interior Karnataka, Sub Himalayan West Bengal & Sikkim, Tamil Nadu Puducherry & Karaikal, Telangana, Uttarakhand and West Madhya Pradesh.
- ❖ **Thunderstorm accompanied with lightning & gusty winds(30-40kmph)** likely at isolated places over Coastal Andhra Pradesh, Jammu-Kashmir-Ladakh-Gilgit-Baltistan-Muzaffarabad and Telangana.
- ❖ **Thunderstorm accompanied with Lightning** likely at isolated places over Arunachal Pradesh, Assam & Meghalaya, Bihar, Chhattisgarh, Gangetic West Bengal, Gujarat State, Interior Karnataka, Jharkhand, Kerala & Mahe, Konkan & Goa, Madhya Pradesh, Maharashtra, Nagaland, Manipur, Mizoram and Tripura, Odisha, Tamil Nadu Puducherry & Karaikal and Uttarakhand.
- ❖ **Strong Surface Winds** likely at isolated places over Andhra Pradesh.

Squally wind with speed reaching 45 kmph to 55 kmph gusting to 65 kmph is likely to prevail over some parts of southwest & westcentral Arabian Sea and along and off Somalia coast. Squally weather with wind speed reaching 40 – 50 kmph gusting to 60 kmph is likely to prevail over some parts of northwest and adjoining westcentral Arabian Sea and along & off Oman coast.

Squally weather with wind speed reaching 40 - 50 kmph gusting to 60 kmph likely to prevail over Gulf of Mannar & adjoining Comorin area and over some parts of southwest Bay of Bengal & along and off south Sri Lanka coast.



17 September (Day 5)

- ❖ **Heavy Rainfall** likely at isolated places over Andaman & Nicobar Islands, Arunachal Pradesh, East Uttar Pradesh, Jharkhand, Sub Himalayan West Bengal & Sikkim, Tamil Nadu Puducherry & Karaikal and Telangana.
- ❖ **Thunderstorm accompanied with lightning & gusty winds(30-40kmph)** likely at isolated places over Coastal Andhra Pradesh, Jammu-Kashmir-Ladakh-Gilgit-Baltistan-Muzaffarabad and Telangana.
- ❖ **Thunderstorm accompanied with Lightning** likely at isolated places over Andaman & Nicobar Islands, Bihar, Chhattisgarh, East Rajasthan, Gangetic West Bengal, Jharkhand, Kerala & Mahe, Konkan & Goa, Madhya Pradesh, Maharashtra, Odisha, Tamil Nadu Puducherry & Karaikal and Uttarakhand.
- ❖ **Strong Surface Winds** likely at isolated places over Andhra Pradesh.

Squally wind with speed reaching 45 kmph to 55 kmph gusting to 65 kmph is likely to prevail over some parts of southwest & westcentral Arabian Sea and along and off Somalia coast.

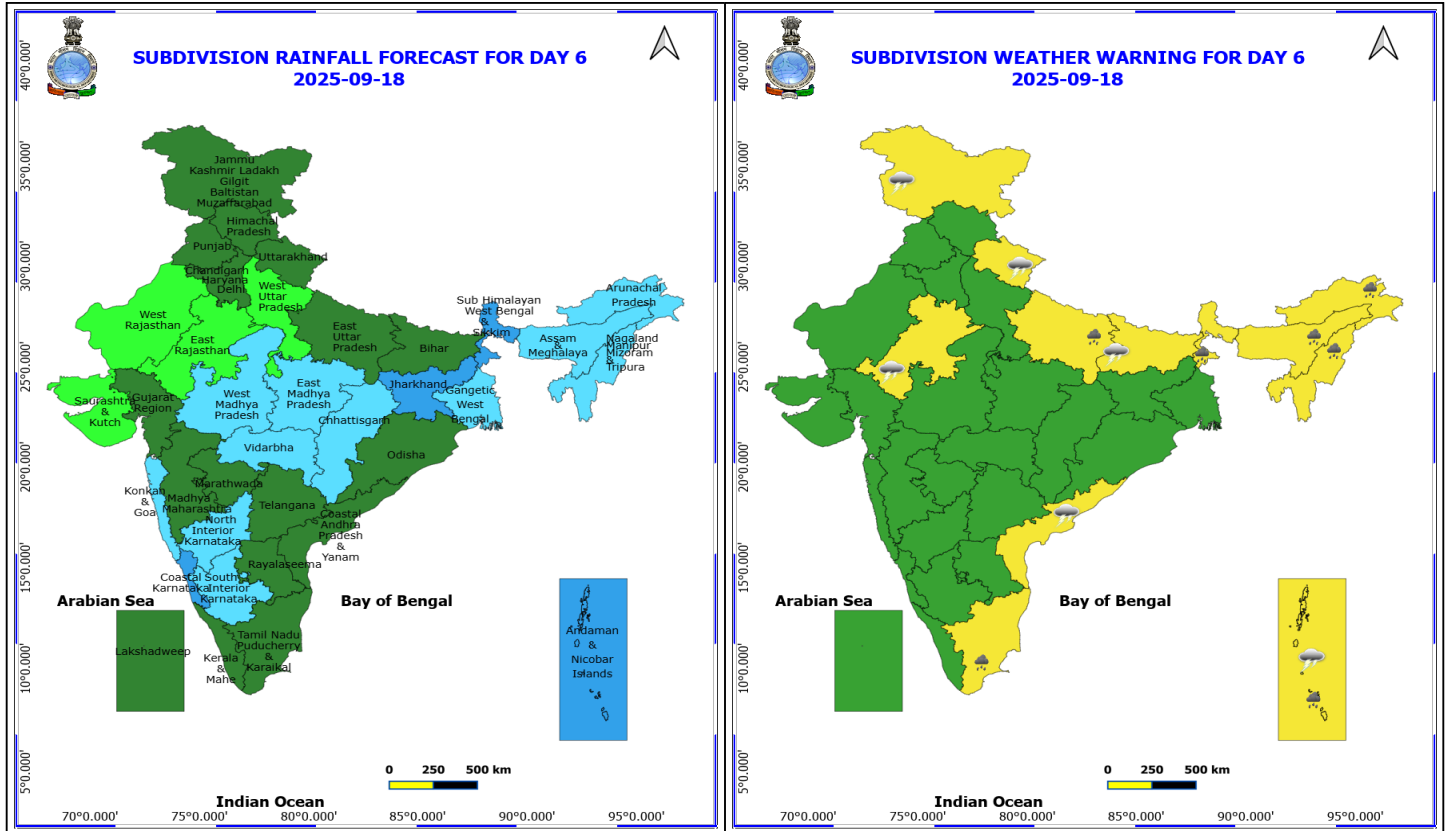
Squally weather with wind speed reaching 40 - 50 kmph gusting to 60 kmph likely to prevail over Gulf of Mannar & adjoining Comorin area and over some parts of southwest Bay of Bengal & along and off south Sri Lanka coast.

***Red color warning does not mean "Red Alert" Red color warning means "Take Action"**

Forecast and warning for any day is valid from 0830 hours IST of day till 0830 hours IST of next day

For more details kindly visit <https://mausam.imd.gov.in> or contact 011-2434-4599

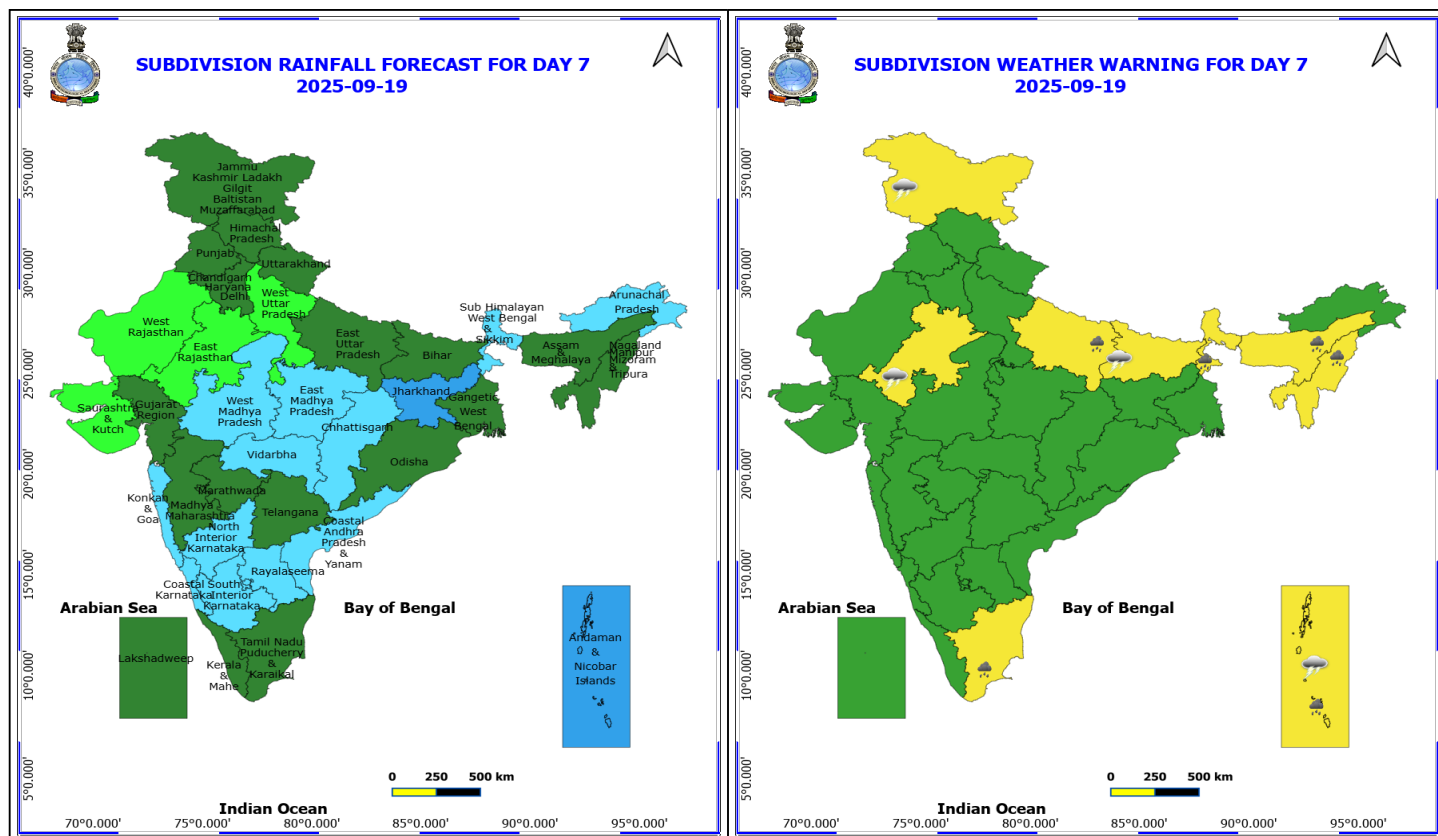
(Service to the nation since 1875)



18 September (Day 6)

- ❖ **Heavy Rainfall** likely at isolated places over Andaman & Nicobar Islands, Arunachal Pradesh, Assam & Meghalaya, East Uttar Pradesh, Nagaland, Manipur, Mizoram and Tripura, Sub Himalayan West Bengal & Sikkim and Tamil Nadu Puducherry & Karaikal.
- ❖ **Thunderstorm accompanied with lightning & gusty winds(30-40kmph)** likely at isolated places over Coastal Andhra Pradesh and Jammu-Kashmir-Ladakh-Gilgit-Baltistan-Muzaffarabad.
- ❖ **Thunderstorm accompanied with Lightning** likely at isolated places over Andaman & Nicobar Islands, Bihar, East Rajasthan and Uttarakhand.

No Fishermen Warning



19 September (Day 7)

- ❖ **Heavy Rainfall** likely at isolated places over Andaman & Nicobar Islands, Assam & Meghalaya, East Uttar Pradesh, Nagaland, Manipur, Mizoram and Tripura, Sub Himalayan West Bengal & Sikkim and Tamil Nadu Puducherry & Karaikal.
- ❖ **Thunderstorm accompanied with lightning & gusty winds(30-40kmph)** likely at isolated places over Jammu-Kashmir-Ladakh-Gilgit-Baltistan-Muzaffarabad.
- ❖ **Thunderstorm accompanied with Lightning** likely at isolated places over Andaman & Nicobar Islands, Bihar and East Rajasthan.

No Fishermen Warning

*Red color warning does not mean "Red Alert" Red color warning means "Take Action"

Forecast and warning for any day is valid from 0830 hours IST of day till 0830 hours IST of next day

For more details kindly visit <https://mausam.imd.gov.in> or contact 011-2434-4599

(Service to the nation since 1875)



Table-1

7 Days Rainfall Forecast

S.No.	Subdivision	13-Sep	14-Sep	15-Sep	16-Sep	17-Sep	18-Sep	19-Sep
		Day 1	Day 2	Day 3	Day 4	Day 5	Day 6	Day 7
1	ANDAMAN & NICOBAR ISLANDS	WS	WS	WS	WS	WS	WS	WS
2	ARUNACHAL PRADESH	WS	WS	WS	WS	FWS	FWS	FWS
3	ASSAM & MEHGHALAYA	WS	WS	WS	WS	FWS	FWS	SCT
4	N. M. M. & T.	WS	WS	WS	FWS	FWS	FWS	SCT
5	S.H. WEST BENGAL & SIKKIM	WS	WS	WS	WS	WS	WS	FWS
6	GANGETIC WEST BENGAL	FWS	FWS	FWS	FWS	FWS	FWS	SCT
7	ODISHA	WS	FWS	FWS	SCT	SCT	SCT	SCT
8	JHARKHAND	FWS	FWS	WS	WS	WS	WS	WS
9	BIHAR	SCT	FWS	FWS	FWS	FWS	SCT	SCT
10	EAST UTTAR PRADESH	ISOL	ISOL	SCT	SCT	SCT	SCT	SCT
11	WEST UTTAR PRADESH	ISOL	ISOL	ISOL	SCT	SCT	ISOL	ISOL
12	UTTARAKHAND	WS	FWS	FWS	FWS	SCT	SCT	SCT
13	HARYANA, CHD & DELHI	ISOL	ISOL	ISOL	SCT	SCT	SCT	SCT
14	PUNJAB	ISOL	ISOL	ISOL	SCT	SCT	SCT	SCT
15	HIMACHAL PRADESH	FWS	FWS	SCT	SCT	SCT	SCT	SCT
16	JAMMU AND KASHMIR AND LADAKH	SCT	SCT	SCT	SCT	SCT	SCT	SCT
17	WEST RAJASTHAN	DRY	DRY	DRY	DRY	DRY	ISOL	ISOL
18	EAST RAJASTHAN	ISOL	ISOL	ISOL	ISOL	ISOL	ISOL	ISOL
19	WEST MADHYA PRADESH	ISOL	SCT	FWS	FWS	FWS	FWS	FWS
20	EAST MADHYA PRADESH	SCT	FWS	FWS	FWS	FWS	FWS	FWS
21	GUJRAT REGION	ISOL	SCT	FWS	FWS	FWS	SCT	SCT
22	SAURASHTRA & KUTCH	ISOL	ISOL	SCT	SCT	SCT	ISOL	ISOL
23	KONKAN & GOA	SCT	FWS	WS	FWS	FWS	FWS	FWS
24	MADHYA MAHARASHTRA	SCT	FWS	WS	FWS	FWS	SCT	SCT
25	MARATHWADA	FWS	FWS	FWS	SCT	SCT	SCT	SCT
26	VIDARBHA	WS	WS	WS	WS	FWS	FWS	FWS
27	CHATTISGARH	WS	WS	FWS	FWS	FWS	FWS	FWS
28	COASTAL ANDHRA PRADESH	FWS	SCT	SCT	SCT	SCT	SCT	FWS
29	TELANGANA	WS	WS	WS	WS	SCT	SCT	SCT
30	RAYALASEEMA	FWS	SCT	ISOL	ISOL	ISOL	SCT	FWS
31	TAMILNADU & PUDUCHERRY	ISOL	ISOL	ISOL	SCT	SCT	SCT	SCT
32	COSTAL KARNATAKA	SCT	FWS	FWS	FWS	WS	WS	FWS
33	NORTH INTERIOR KARNATAKA	WS	WS	WS	FWS	FWS	FWS	FWS
34	SOUTH INTERIOR KARNATAKA	SCT	SCT	SCT	FWS	FWS	FWS	FWS
35	KERALA	ISOL	SCT	FWS	FWS	FWS	SCT	SCT
36	LAKSHDWEEP	SCT	SCT	FWS	SCT	SCT	SCT	SCT

Legend	Category	%Stations
WS	Widespread/Most Places	76-100
FWS	Fairly Widespread/Many Places	51-75
SCT	Scattered/ A Few Places	26-50
ISOL	Isolated Places	1-25
DRY	No Rain	0

*Red color warning does not mean "Red Alert" Red color warning means "Take Action"

Forecast and warning for any day is valid from 0830 hours IST of day till 0830 hours IST of next day

For more details kindly visit <https://mausam.imd.gov.in> or contact 011-2434-4599

(Service to the nation since 1875)

Fig. 1: Maximum Temperatures Dated 2025-09-13

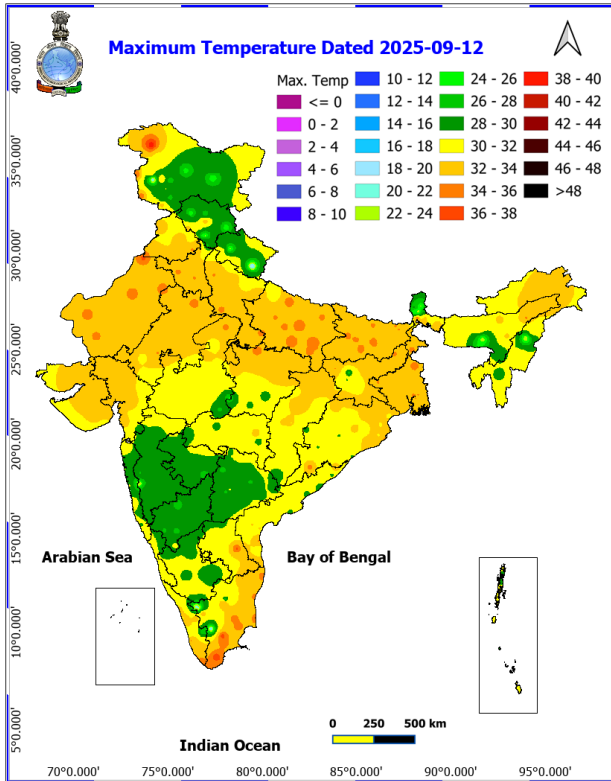


Fig. 2: Departure of Maximum Temp. Dated 2025-09-13

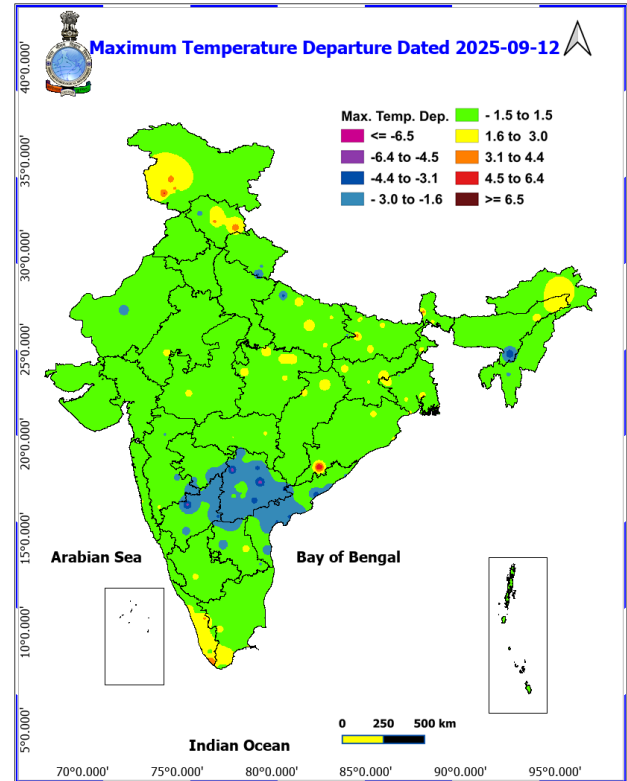


Fig. 3: Minimum Temperatures Dated 2025-09-13

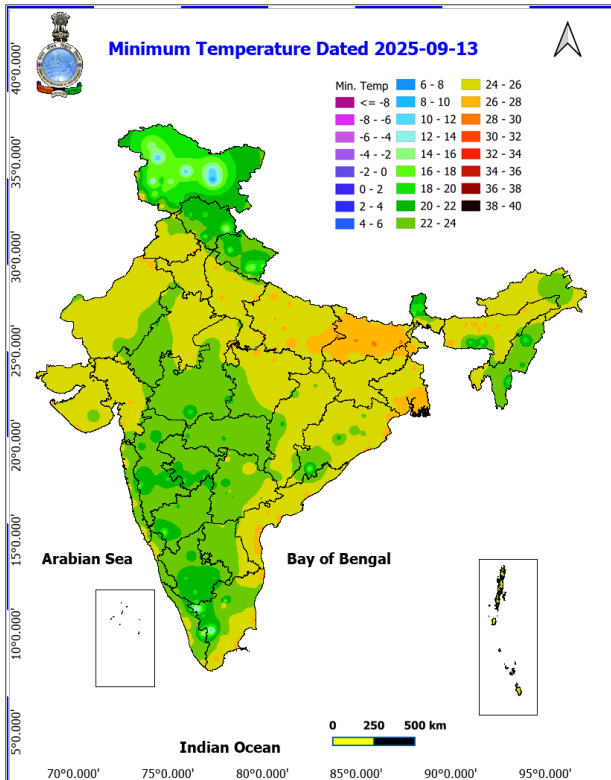
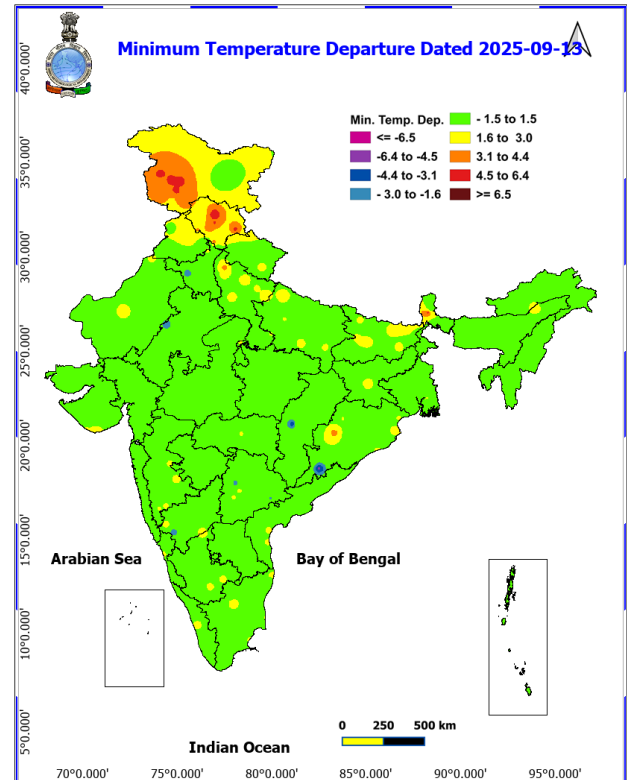
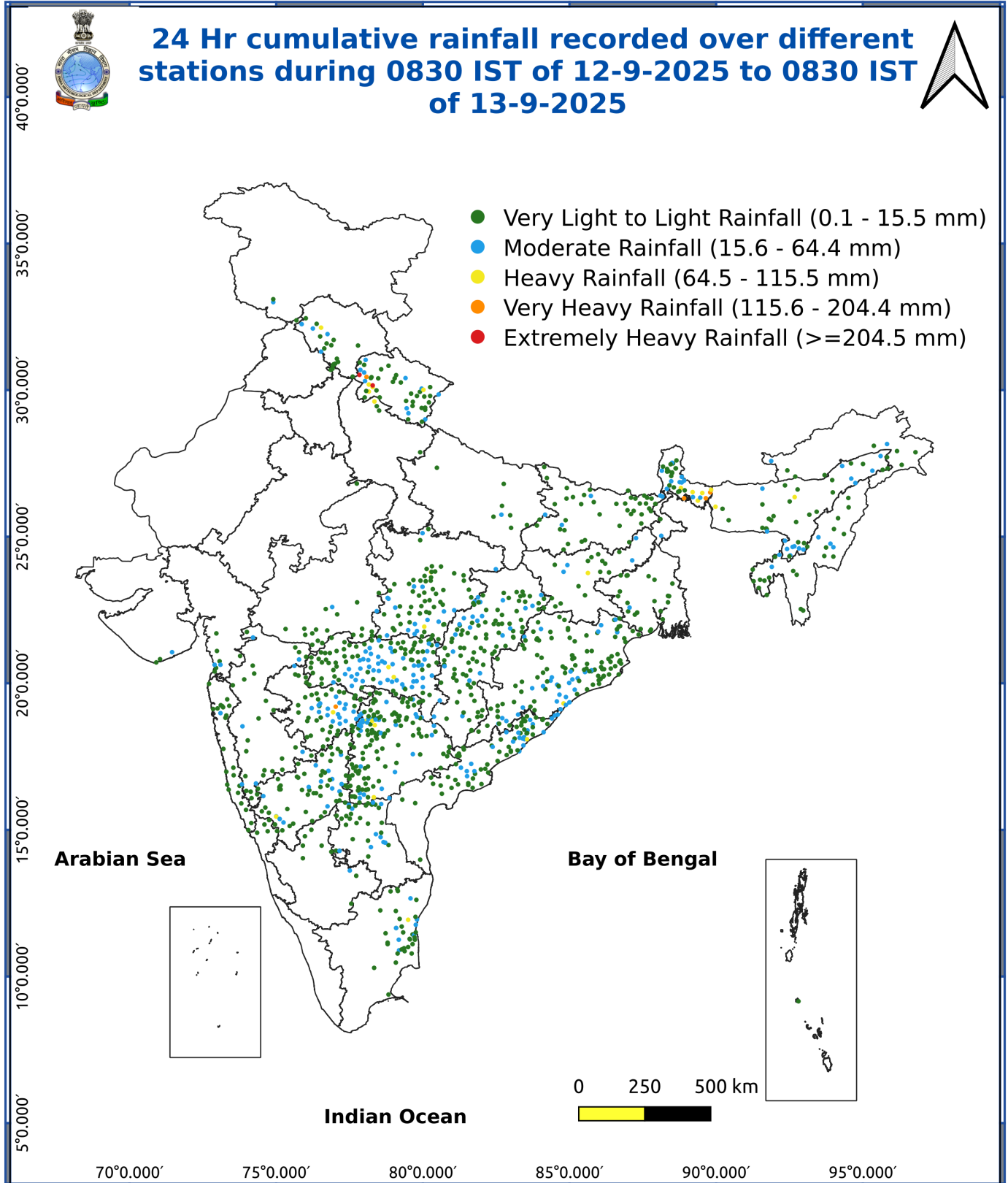


Fig. 4: Departure of Minimum Temp. Dated 2025-09-13





*Red color warning does not mean "Red Alert" Red color warning means "Take Action"

Forecast and warning for any day is valid from 0830 hours IST of day till 0830 hours IST of next day

For more details kindly visit <https://mausam.imd.gov.in> or contact 011-2434-4599

(Service to the nation since 1875)

Impact & Action Suggested due to

Heavy to very heavy rainfall (12-20 cm) at isolated places over Uttarakhand, Nagaland, Manipur, Mizoram & Tripura, Telangana on 13th; Arunachal Pradesh during 13th -16th; Sub-Himalayan West Bengal & Sikkim on 13th & 14th; Assam & Meghalaya, Konkan & Goa on 14th & 15th; Bihar during 14th-16th and Madhya Maharashtra on 15th September.

Impact Expected

- Localized Flooding of roads, water logging in low lying areas and closure of underpasses mainly in urban areas of the above region.
- Occasional reduction in visibility due to heavy rainfall.
- Disruption of traffic in major cities due to water logging in roads leading to increased travel time.
- Minor damage to kutcha roads.
- Possibilities of damage to vulnerable structure.
- Localized Landslides/Mudslides/landslips/mudslips/landsinks/mudsinks.
- Damage to horticulture and standing crops in some areas due to inundation.
- It may lead to riverine flooding in some river catchments (for riverine flooding please visit Web page of CWC)

Action Suggested

- Check for traffic congestion on your route before leaving for your destination.
- Follow any traffic advisories that are issued in this regard.
- Avoid going to areas that face the water logging problems often.
- Avoid staying in vulnerable structure.

Agromet advisories for various parts of the country

Agromet advisories for likely impact of Heavy / Heavy to Very Heavy Rainfall

(Based on the IBF and advisories issued by different AMFUs)

In **Uttarakhand**, drain out excess water from fields of green gram, black gram, soybean, barnyard millet and finger millet in **Sub Humid Sub Tropic Zone**. In **Bhabar and Tarai Zone**, maintain proper drainage in fields of rice, pigeon pea, black gram, green gram, finger millet, maize and soybean. Avoid sowing of potato and radish under heavy rainfall conditions and ensure proper drainage in already sown crop. In **Hill Zone**, undertake harvesting of matured crops of barnyard millet, ginger and rainfed rice and keep the harvested produce in safe place. Ensure proper drainage in pigeon pea and vegetable crops.

In **Arunachal Pradesh**, immediately harvest matured crops of *Jhum* rice, soybean, finger millet, foxtail millet, vegetables, matured bunches of banana and matured fruits of apple and kiwi and shift to properly covered shelter. Maintain proper drainage in standing crops such as rice, soybean, finger millet, vegetables and fruit orchards to avoid water stagnation. Avoid fresh sowing of French bean during heavy rainfall and ensure proper drainage in already sown crop.

In **Assam**, ensure proper drainage in fields of rice, sugarcane, black gram and sesame in **Hill Zone**. In **Lower Brahmaputra Valley Zone**, ensure proper drainage system in *Sali* rice fields and nursery bed of vegetables. Cover the nursery bed with thin polythene to avoid the damages due to heavy rainfall. In **Barak Valley Zone**, postpone the sowing of green gram and black gram and provide adequate drainage facilities in fields of rice, vegetables and already sown green gram and black gram.

In **Meghalaya**, maintain proper drainage in ginger and vegetable fields and fruit orchards. Provide support to tall and fragile crops like banana, papaya, pumpkin, etc. to prevent lodging.

In **Manipur**, harvest matured colocasia and matured pods of soybean.

***Red color warning does not mean "Red Alert" Red color warning means "Take Action"**

Forecast and warning for any day is valid from 0830 hours IST of day till 0830 hours IST of next day

For more details kindly visit <https://mausam.imd.gov.in> or contact 011-2434-4599

(Service to the nation since 1875)

In **Sub-Himalayan West Bengal**, drain out excess water from *aman* paddy and vegetable fields (chilli, bitter gourd, pointed gourd, okra, brinjal etc.) in **Terai Zone**.

In **Bihar**, ensure proper drainage of excess rainwater from standing crops such as maize and vegetables in **North West Alluvial Plain Zone** and maize, finger millet and vegetables in **North East Alluvial Zone**.

In **Maharashtra**, immediately harvest matured crops of green gram and black gram in **Madhya Maharashtra** and matured fruits of sapota and custard apple in **Marathwada** and keep the harvested produce at safer places. In **Vidarbha**, store the harvested produce of green gram and black gram at safe places, if storage is not possible cover the harvested produce with plastic or tarpaulin sheets. Make arrangements to drain out excess water from fields of vegetables and fruit orchards in **Konkan**; rice, sugarcane, pigeon pea, soybean, maize, vegetables and fruit orchards in **Madhya Maharashtra**; sugarcane, sorghum, soybean, turmeric, vegetables and fruit orchards in **Marathwada**; pigeon pea, cotton, soybean, maize, vegetables and fruit orchards in **Vidarbha**.

In **Andhra Pradesh**, make arrangements to drain out excess water from fields of rice, maize, cotton, mesta, green gram, black gram, groundnut, sugarcane, and vegetables in **North Coastal Zone**; rice, sugarcane, maize, finger millet, groundnut, ginger, turmeric, vegetables and fruit orchards in **High Altitude Tribal Zone** and rice, maize, pigeon pea and cotton in **Krishna Godavari Zone**.

In **Telangana**, ensure adequate drainage facilities in fields of rice, maize, cotton, soybean, pigeon pea, turmeric and vegetables to drain out excess rain water.

Livestock / Fishery

Keep the animals inside the shed during heavy rainfall and provide them balanced feed.

Store feed and fodder in a safe place to prevent spoilage.

Construct an outlet with proper netting around the ponds to drain out excess water, thereby preventing fish from escaping in case of overflow.

Agromet advisories for likely impact of Thunderstorm / Gusty Winds / Squally Winds

Provide mechanical support to horticultural crops and staking or support to vegetables and young fruit plants / fruit-bearing plants to avoid lodging due to strong winds.

Legends & abbreviations:

Region wise classification of meteorological Sub-Divisions:

Northwest India: Western Himalayan Region (Jammu-Kashmir-Ladakh-Gilgit-Baltistan-Muzaffarabad, Himachal Pradesh and Uttarakhand); Punjab, Haryana-Chandigarh-Delhi; West Uttar Pradesh, East Uttar Pradesh, West Rajasthan and East Rajasthan.

Central India: West Madhya Pradesh, East Madhya Pradesh, Vidarbha and Chhattisgarh.

East India: Bihar, Jharkhand, Sub-Himalayan West Bengal & Sikkim; Gangetic West Bengal, Odisha and Andaman & Nicobar Islands.

Northeast India: Arunachal Pradesh, Assam & Meghalaya and Nagaland, Manipur, Mizoram & Tripura.

West India: Gujarat Region, Saurashtra & Kutch, Konkan & Goa, Madhya Maharashtra and Marathawada.

South India: Coastal Andhra Pradesh & Yanam, Telangana, Rayalaseema, Coastal Karnataka, North Interior Karnataka, South Interior Karnataka, Kerala & Mahe, Tamil Nadu, Puducherry & Karaikal and Lakshadweep.

***Red color warning does not mean "Red Alert" Red color warning means "Take Action"**

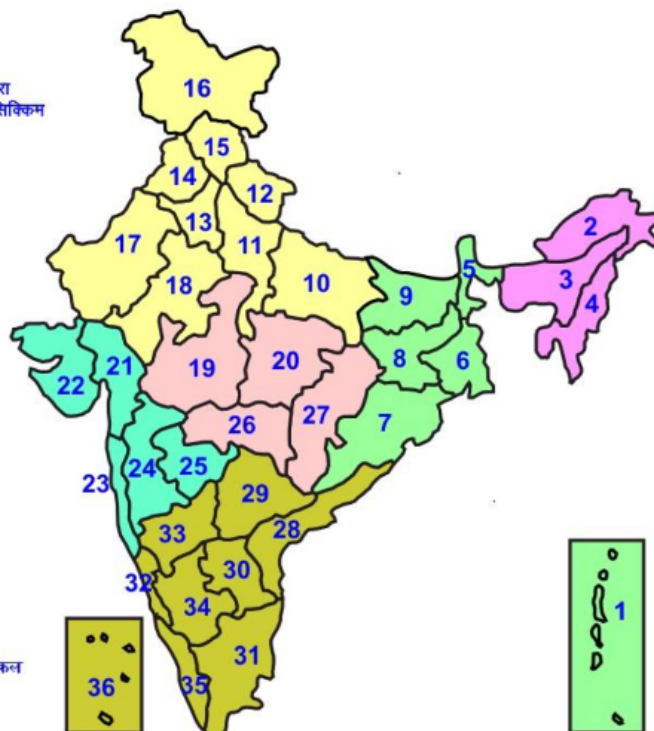
Forecast and warning for any day is valid from 0830 hours IST of day till 0830 hours IST of next day

For more details kindly visit <https://mausam.imd.gov.in> or contact 011-2434-4599

(Service to the nation since 1875)

LEGENDS

- 1 अंडमान और निकोबार द्वीप समुह
- 2 अरुणाचल प्रदेश
- 3 असम और मेघालय
- 4 नागालैंड मनीपुर मीजोरम और त्रिपुरा
- 5 उप हिमालय पश्चिम बंगाल एवं सिक्किम
- 6 पश्चिम बंगाल
- 7 ओडिसा
- 8 झारखंड
- 9 बिहार
- 10 पूर्वी उत्तर प्रदेश
- 11 पश्चिम उत्तर प्रदेश
- 12 उत्तराखंड
- 13 हरियाणा चंडीगढ़ एवं दिल्ली
- 14 पंजाब
- 15 हिमाचल प्रदेश
- 16 जम्मू एवं कश्मीर एवं लद्दाख
- 17 पश्चिम राजस्थान
- 18 पूर्वी राजस्थान
- 19 पश्चिम मध्य प्रदेश
- 20 पूर्वी मध्य प्रदेश
- 21 गुजरात क्षेत्र
- 22 सौराष्ट्र एवं कच्छ
- 23 कोंकण एवं गोवा
- 24 मध्य महाराष्ट्र
- 25 मराठावाड़ा
- 26 विदर्भ
- 27 छत्तीसगढ़
- 28 तटीय आंध्र प्रदेश एवं यनम
- 29 तेलंगाना
- 30 रायलसीमा
- 31 तमिलनाडु, पुदुचेरी एवं कराईकल
- 32 तटिय कर्नाटक
- 33 आंतरिक उत्तरी कर्नाटक
- 34 आंतरिक दक्षिणी कर्नाटक
- 35 केरल एवं माहे
- 36 लक्षद्वीप



1. Andaman & Nicobar Islands
2. Arunachal Pradesh
3. Assam & Meghalaya
4. Nagaland, Manipur, Mizoram & Tripura
5. Sub-Himalayan West Bengal & Sikkim
6. Gangetic West Bengal
7. Orissa
8. Jharkhand
9. Bihar
10. East Uttar Pradesh
11. West Uttar Pradesh
12. Uttarakhand
13. Haryana, Chd & Delhi
14. Punjab
15. Himachal Pradesh
16. Jammu & Kashmir and Ladakh
17. West Rajasthan
18. East Rajasthan
19. West Madhya Pradesh
20. East Madhya Pradesh
21. Gujarat
22. Saurashtra
23. Konkan & Goa
24. Madhya Maharashtra
25. Marathawada
26. Vidharbha
27. Chhattisgarh
28. Coastal Andhra Pradesh & Yanam
29. Telangana
30. Rayalaseema
31. Tamilnadu, Puducherry & Karaikal
32. Coastal Karnataka
33. North Interior Karnataka
34. South Interior Karnataka
35. Kerala & Mahe
36. Lakshadweep

SPATIAL DISTRIBUTION (% of Stations reporting)













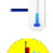




% Stations	Category	% Stations	Category
76-100	Widespread (WS/Most Places)	26-50	Scattered (SCT/ A Few Places)
51-75	Fairly Widespread (FWS/ Many Places)	1-25	Isolated (ISOL)

Subdivision Colour

- NO WARNING
- WATCH (BE UPDATED)
- ALERT (BE PREPARED TO TAKE ACTION)
- WARNING (TAKE ACTION)

Probabilistic Forecast

Terms	Probability of Occurrence (%)
Unlikely	< 25
Likely	25 - 50
Very Likely	50 - 75
Most Likely	> 75

-  Heavy Rain
-  Very Heavy Rain
-  Extremely Heavy Rain
-  Heavy Snow
-  Thunderstorm & Lightning
-  Hailstorm
-  Dust Storm
-  Dust Raising Winds
-  Strong surface winds
-  Heat Wave
-  Hot Day
-  Warm Night
-  Cold Wave
-  Cold Day
-  Ground Frost
-  FOG Fog
-  Hot & Humid

*Red color warning does not mean "Red Alert" Red color warning means "Take Action"

Forecast and warning for any day is valid from 0830 hours IST of day till 0830 hours IST of next day

For more details kindly visit <https://mausam.imd.gov.in> or contact 011-2434-4599

(Service to the nation since 1875)

LEGENDS

WARNING

WARNING (TAKE ACTION)
ALERT (BE PREPARED)
WATCH (BE UPDATED)
NO WARNING (NO ACTION)

Probabilistic Forecast

Terms	Probability of Occurrence (%)
Unlikely	< 25
Likely	25 - 50
Very Likely	50 - 75
Most Likely	> 75



Heavy: 64.5 to 115.5 mm/cm *
Very Heavy: 115.6 to 204.4 mm/cm *
Extremely Heavy: > 204.4 mm/cm *



When maximum temperature of a station reaches $\geq 40^{\circ}\text{C}$ for plains and $\geq 30^{\circ}\text{C}$ for hilly regions
(a) Based on Departure from normal

Heat Wave: Maximum Temperature Departure from normal 4.5°C to 6.4°C .
Severe Heat Wave: Maximum Temperature Departure from normal $\geq 6.5^{\circ}\text{C}$

(b). Based on Actual maximum temperature

Heat Wave: When actual maximum temperature $\geq 45^{\circ}\text{C}$.
Severe Heat Wave: When actual maximum temperature $\geq 47^{\circ}\text{C}$

(c). Criteria for heat wave for coastal stations

When maximum temperature departure is $> 4.5^{\circ}\text{C}$ from normal. Heat Wave may be described provided maximum temperature $\geq 37^{\circ}\text{C}$



When maximum temperature remains 40°C

Warm Night: When minimum temperature departure 4.5°C to 6.4°C .
Severe Warm Night: When minimum temperature departure $> 6.4^{\circ}\text{C}$.



When minimum temperature of a station $\leq 10^{\circ}\text{C}$ for plains and $\leq 0^{\circ}\text{C}$ for hilly regions.

(a). Based on departure

Cold Wave: Minimum Temperature Departure from normal -4.5°C to -6.4°C .
Severe Cold Wave: Minimum Temperature Departure from normal $\leq -6.5^{\circ}\text{C}$

(b) Based on actual Minimum Temperature (for Plains only)

Cold Wave: When Minimum Temperature is $\leq 4.0^{\circ}\text{C}$
Severe Cold Wave: When Minimum Temperature is $\leq 2.0^{\circ}\text{C}$

(c) For Coastal Stations

When Minimum Temperature departure is $\leq -4.5^{\circ}\text{C}$ & actual Minimum Temperature is $\leq 15^{\circ}\text{C}$



When minimum temperature of a station $\leq 10^{\circ}\text{C}$ for plains and $\leq 0^{\circ}\text{C}$ for hilly regions
Based on departure

Cold Day: Maximum Temperature Departure from normal -4.5°C to -6.4°C .
Severe Cold Day: Maximum Temperature Departure from normal $\leq -6.5^{\circ}\text{C}$



Phenomenon of small droplets suspended in air and the horizontal visibility $< 1\text{km}$

Moderate Fog: When the visibility between 500-200 metres
Dense Fog: when the visibility between 50-200 metres
Very Dense Fog: when the visibility < 50 metres



Sudden electrical discharges manifested by a flash of light (Lightning) and a sharp rumbling sound (thunder)



An ensemble of particles of dust or sand energetically lifted to great heights by a strong and turbulent wind.



Ice deposits on ground

Air temperature $\leq 4^{\circ}\text{C}$ (over Plains)



A strong wind that rises suddenly, lasts for at least 1 minute.

Moderate: Wind speed 52-61 kmph
Severe: Wind speed 62-87 kmph
Very Severe: Wind speed > 87 kmph



Effect of various waves in the sea over specific area

Rough to very rough: Wind speed 41-62 kmph (22-33 knots) & Wave height 2.5-6 metre
High to very high: Wind speed 63-117 kmph (34-63 knots) & Wave height 6-14 metre
Phenomenal: Wind speed > 117 kmph (> 63 knots) & Wave height > 14 metre



Cyclonic Storm: Wind speed 62-87 kmph (34-47 knots)

Severe Cyclonic Storm: Wind speed 88-117 kmph (48-63 knots)

Very Severe Cyclonic Storm: Wind speed 118-165 kmph (64-89 knots)

Extremely Severe Cyclonic Storm: Wind speed 166-220 kmph (90-119 knots)

Super Cyclone Storm: Wind speed > 220 kmph (> 119 knots)

*Red color warning does not mean "Red Alert" Red color warning means "Take Action"

Forecast and warning for any day is valid from 0830 hours IST of day till 0830 hours IST of next day

For more details kindly visit <https://mausam.imd.gov.in> or contact 011-2434-4599

(Service to the nation since 1875)