

2025-08-05

Time of Issue: 13:23:00 hours IST
(Mid-Day)

ALL INDIA WEATHER SUMMARY AND FORECAST BULLETIN

Significant Weather Features

Northwest India:

Extremely heavy rainfall (≥ 21 cm) very likely at isolated places over West Uttar Pradesh and Uttarakhand on 05th August.

Isolated **heavy rainfall** likely over Uttarakhand, Himachal Pradesh during 05th-11th; Jammu-Kashmir on 05th & 06th; Punjab on 05th, 10th & 11th; Haryana, West Uttar Pradesh on 05th, 06th, 10th & 11th; East Uttar Pradesh on 05th & 11th August with **very heavy rainfall** over Himachal Pradesh, Uttarakhand, Haryana, Punjab, East Uttar Pradesh on 05th August.

Light/moderate rainfall at many places accompanied with thunderstorm & lightning likely over Western Himalayan region and many/some places over the plains during next 7 days.

South Peninsular India:

Extremely heavy rainfall (≥ 21 cm) very likely at isolated places over Kerala on 05th & 06th (northern parts of Kerala) and Ghat areas of Tamil Nadu on 05th August.

Isolated **heavy rainfall** likely over Tamil Nadu, Kerala & Mahe, Karnataka, Coastal Andhra Pradesh & Yanam, Telangana, Rayalaseema during 05th-08th; Lakshadweep on 05th & 06th August with **very heavy rainfall** over Tamil Nadu on 06th; Coastal & South Interior Karnataka on 05th & 06th; North Interior Karnataka on 05th August.

Strong surface winds (speed reaching 40-50 kmph) very likely over South Peninsular India during next 2 days.

Light to moderate rainfall at some/many places accompanied with thunderstorm & lightning likely over Tamil Nadu, Kerala & Mahe, Lakshadweep, Karnataka, Rayalaseema, Coastal Andhra Pradesh & Yanam and Telangana during next 5 days.

Northeast India:

Light/moderate rainfall at many places accompanied with thunderstorm, lightning and isolated **heavy rainfall** likely to continue over Arunachal Pradesh, Assam & Meghalaya Nagaland, Manipur, Mizoram & Tripura during 05th-11th August with isolated **very heavy rainfall over Arunachal Pradesh, Assam & Meghalaya during 07th-11th and Nagaland on 07th & 08th August.**

East & Central India:

Isolated **heavy rainfall** likely over Sub-Himalayan West Bengal & Sikkim, Bihar during 05th-11th; Odisha during 06th-08th; Gangetic West Bengal during 05th-08th; Jharkhand on 07th & 08th; northwest Madhya Pradesh on 05th August with isolated **very heavy rainfall over Bihar on 07th & 08th; Sub-Himalayan West Bengal & Sikkim on 07th & 11th August.**

Light to moderate rainfall at most/many places accompanied with thunderstorm & lightning likely over the region during next 5 days.

West India:

Isolated **heavy rainfall** likely over Marathwada during 05th-07th; Goa on 05th; Konkan & Goa on 07th & 08th and Madhya Maharashtra on 05th & 07th August.

Light to moderate rainfall at many/some places very likely over the region during next 5-6 days.

***Red color warning does not mean "Red Alert" Red color warning means "Take Action"**

Forecast and warning for any day is valid from 0830 hours IST of day till 0830 hours IST of next day

For more details kindly visit <https://mausam.imd.gov.in> or contact 011-2434-4599

(Service to the nation since 1875)

Main Weather Observations:

❖ **Rainfall distribution** (from 0830 hours IST of yesterday to 0830 hours IST of today): **at most places** over Sub Himalayan West Bengal & Sikkim, Gangetic West Bengal, Bihar, Uttarakhand, Himachal Pradesh, Konkan & Goa and Lakshadweep; **at many places** over Rayalaseema, Tamil Nadu, Puducherry & Karaikal and Kerala & Mahe; **at a few places** over Andaman & Nicobar Islands, Haryana-Chandigarh-Delhi, Punjab, East Madhya Pradesh, Gujarat Region, Saurashtra & Kutch, Chhattisgarh and Coastal Andhra Pradesh & Yanam; **at isolated places** over Jammu-Kashmir-Ladakh-Gilgit-Baltistan-Muzaffarabad, East Rajasthan, West Madhya Pradesh, Madhya Maharashtra, Marathwada and Vidarbha; **Dry** over rest of the country.

❖ **Significant rainfall recorded(in cm)** (from 0830 hours IST of yesterday to 0830 hours IST of today): **Uttarakhand**: Hardwar (dist Hardwar) 30; Narendranagar (dist Garhwal Tehri) 17; Rishikesh (dist Dehradun) 14; Jollygrant (dist Dehradun) 13; Kotdwara (dist Garhwal Pauri) 12; Roshnabad (dist Hardwar) 9; Dehra Dun (dist Dehradun), Roorkee (dist Hardwar), Laksar (dist Hardwar) 8 Each; Kashipur (dist Udham Singh Nagar), Haripur (dist Dehradun) 7 Each; **Kerala & Mahe**: Piravam (dist Ernakulam) 22; Peechi AWS (dist Thrissur) 13; Choondy AWS (dist Ernakulam) 8; Vellanikkara (dist Thrissur), Kottayam (dist Kottayam), Vadavathur AWS (dist Kottayam) 7 Each; **Himachal Pradesh**: Mandi (dist Mandi) 15; Nadaun (dist Hamirpur), Sundarnagar (dist Mandi) 8 Each; Gohar (dist Mandi) 7; **Tamil Nadu, Puducherry & Karaikal**: Puducherry (dist Puducherry), Basl Mugaiyur (dist Villupuram) 10 Each; Thandampettai (dist Tiruvannamalai) 9; Alangayam (dist Tirupattur), Budalur (dist Thanjavur) 8 Each; Panapakkam (dist Ranipet) 7; **Bihar**: Darauli (dist Siwan) 9, Duraundha (dist Siwan) 9, Jhanjharpur (dist Madhubani) 8, Gaunaha (dist West Champaran) 8, Sarmera (dist Nalanda) 7, Korha (dist Katihar) 7, **Coastal Andhra Pradesh & Yanam**: Koyyalagudem (dist Eluru) 9; **Gangetic West Bengal**: Narayanpur (dist Birbhum) 9; **Sub Himalayan West Bengal & Sikkim**: Falakata (dist Alipurduar) 9; Ghatia T.e. (dist Jalpaiguri) 8; Chengmari/Diana (dist Jalpaiguri) 7; **Rayalaseema**: Thottambedu (dist Tirupati) 8; **Lakshadweep**: Agathi (dist Lakshadweep), Minicoy (dist Lakshadweep) 7 Each; **West Madhya Pradesh**: Roan (dist Bhind), Mihona (dist Bhind) 7 Each.

❖ **Heavy Rainfall observed** (from 0830 hours IST of yesterday to 0830 hours IST of today): **Extremely heavy rain** at isolated places over Uttarakhand and Kerala & Mahe. **Heavy to very heavy rain** at isolated places over Uttarakhand, Himachal Pradesh and Kerala & Mahe. **Heavy rain** at isolated places over Sub Himalayan West Bengal & Sikkim, Gangetic West Bengal, West Madhya Pradesh, Coastal Andhra Pradesh & Yanam, Rayalaseema and Tamil Nadu, Puducherry & Karaikal.

❖ **Minimum Temperature Departures (as on 05-08-2025): markedly above normal(> 5.1°C)** at isolated places over Assam & Meghalaya, East Uttar Pradesh, West Uttar Pradesh, Himachal Pradesh, East Rajasthan and West Madhya Pradesh. **appreciably above normal(3.1°C to 5.0°C)** at few places over Odisha and East Madhya Pradesh; at isolated places over Sub Himalayan West Bengal & Sikkim, Gangetic West Bengal, Bihar, West Rajasthan, Gujarat Region, Saurashtra & Kutch, Madhya Maharashtra and Marathwada. **above normal(1.6°C to 3.0°C)** at many places over Andaman & Nicobar Islands and Vidarbha; at few places over Chhattisgarh, Coastal Andhra Pradesh & Yanam, Telangana, Coastal Karnataka and North Interior Karnataka; at isolated places over Uttarakhand, Jammu-Kashmir-Ladakh-Gilgit-Baltistan-Muzaffarabad, Konkan & Goa and Tamil Nadu, Puducherry & Karaikal. **near normal(-1.5°C to 1.5°C)** at many places over Haryana-Chandigarh-Delhi; at most places over Nagaland, Manipur, Mizoram & Tripura, Punjab, Rayalaseema, South Interior Karnataka and Kerala & Mahe; at few places over Arunachal Pradesh, Jharkhand and Lakshadweep. **The lowest minimum temperature** of 19.5°C is reported at Jeur (Madhya Maharashtra) over the Plains of India.

❖ **Maximum Temperature Departures (as on 04-08-2025): markedly above normal(> 5.1°C)** at isolated places over Odisha, West Madhya Pradesh, Chhattisgarh, Coastal Andhra Pradesh & Yanam and Telangana. **appreciably above normal(3.1°C to 5.0°C)** at many places over North Interior Karnataka; at most places over Vidarbha; at few places over Madhya Maharashtra; at isolated places over Assam & Meghalaya, Jammu-Kashmir-Ladakh-Gilgit-Baltistan-Muzaffarabad, East Madhya Pradesh, Konkan & Goa and Marathwada. **above normal(1.6°C to 3.0°C)** at few places over Gujarat Region, Rayalaseema and Kerala & Mahe; at isolated places over Andaman & Nicobar Islands, Nagaland, Manipur, Mizoram & Tripura, Gangetic West Bengal, Punjab, Himachal Pradesh, West Rajasthan, Saurashtra & Kutch, Tamil Nadu, Puducherry & Karaikal and South Interior Karnataka. **near normal(-1.5°C to 1.5°C)** at many places over Sub Himalayan West Bengal & Sikkim and Lakshadweep; at most places over Haryana-

*Red color warning does not mean "Red Alert" Red color warning means "Take Action"

Forecast and warning for any day is valid from 0830 hours IST of day till 0830 hours IST of next day

For more details kindly visit <https://mausam.imd.gov.in> or contact 011-2434-4599

(Service to the nation since 1875)



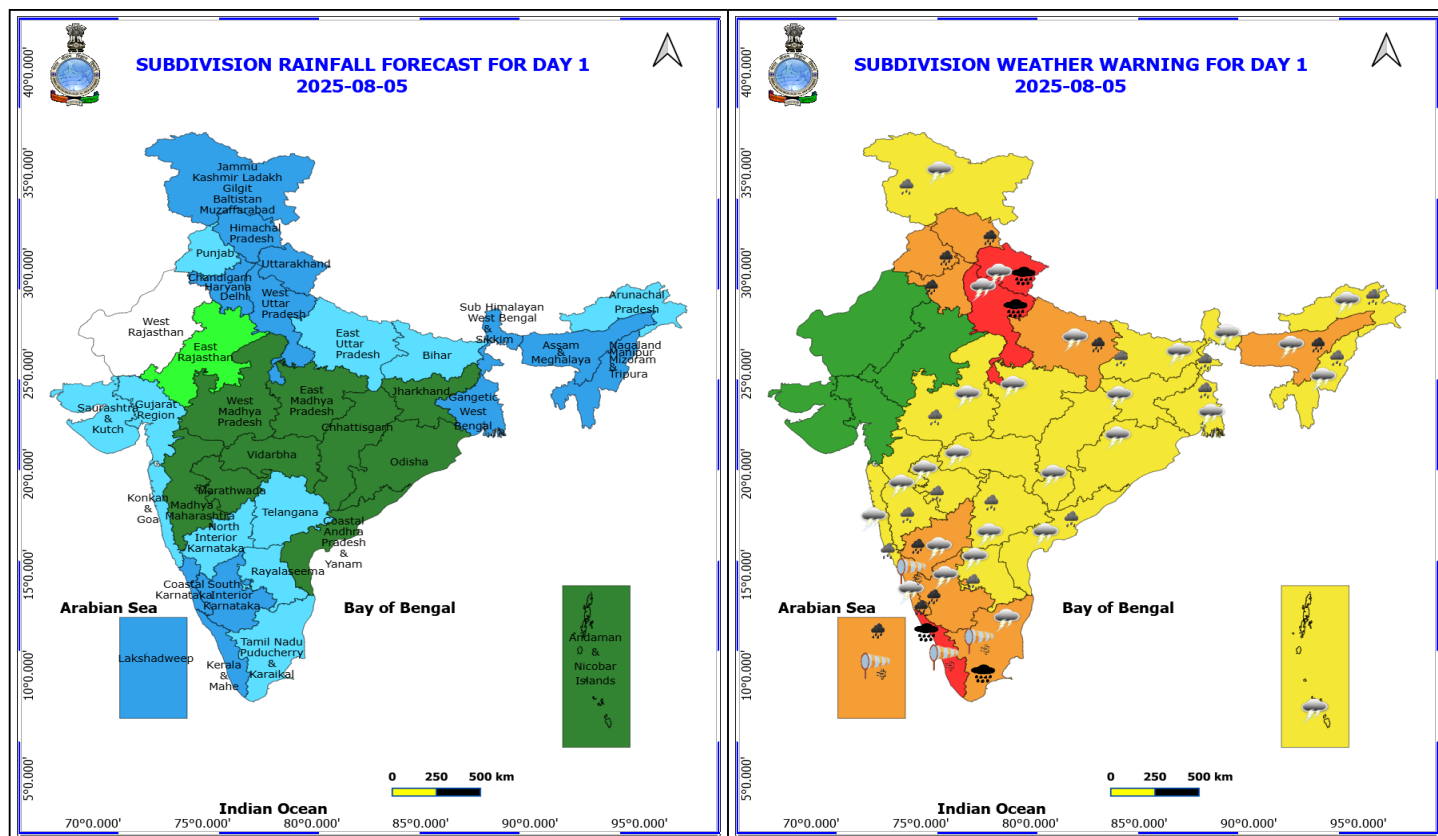
Chandigarh-Delhi, East Rajasthan and Coastal Karnataka; at few places over Jharkhand; at isolated places over Bihar and Uttarakhand. **The highest maximum temperature** of 38.2°C is reported at NELLORE (ANDHRA PRADESH).

Meteorological Analysis (Based on 0830 hours IST)

- The **monsoon trough** at mean sea level now passes through Amritsar, Patiala, Muzaffarnagar, Kheri, Valmiki Nagar and thence east-northeastwards to the Arunachal Pradesh close to foot hills of Himalayas.
- The **upper air cyclonic circulation** over north Bangladesh & neighbourhood persists and now seen between 4.5 & 7.6 km above mean sea level.
- The **upper air cyclonic circulation** over southwest Bay off North Tamil Nadu coast persists and now seen between 1.5 & 7.6 km above mean sea level tilting southward with height.
- The **upper air cyclonic circulation** over Rayalaseema & neighbourhood persists and extends upto 1.5 km above mean sea level.
- An **upper air cyclonic circulation** lies over south Kerala & neighbourhood at 3.1 km above mean sea level.
- The east-west **trough** now runs roughly along Lat. 10°N from southern parts of east central Arabian Sea to central parts of south Bay of Bengal across South Interior Karnataka & north interior Tamil Nadu and the cyclonic circulation over southwest Bay off North Tamil Nadu coast between 3.1 & 7.6 km above mean sea level tilting southward with height.
- A **trough** runs from northwest Uttar Pradesh to northeast Arabian sea across south Haryana, East Rajasthan & Gujarat at 3.1 km above mean sea level.
- The **upper air cyclonic circulation** over central parts of south Rajasthan at 3.1 km above mean sea level has merged with the above system.
- The **Western Disturbance** as a trough in middle tropospheric level with its axis at 5.8 km above mean sea level roughly along Long. 72°E to north of 30°N persists.
- The **upper air cyclonic circulation** over northeast Assam persists and now seen at 0.9 km above mean sea level.
- An **upper air cyclonic circulation** likely to form over south Bangladesh & neighbourhood around 08th August, 2025.

Weather Outlook for subsequent 3 days

- Fairly widespread to widespread rainfall likely over the most parts of the country except Madhya Maharashtra and Marathwada where isolated rainfall is likely.



5 August (Day 1)

- ❖ **Heavy to Very Heavy Rainfall with isolated Extremely Heavy Rainfall** very likely at isolated places over Kerala & Mahe, Tamil Nadu Puducherry & Karaikal, Uttarakhand and West Uttar Pradesh.
- ❖ **Heavy to Very Heavy Rainfall** very likely at isolated places over Assam & Meghalaya, East Uttar Pradesh, Haryana, Chandigarh & Delhi, Himachal Pradesh, Karnataka, Lakshadweep and Punjab.
- ❖ **Heavy Rainfall** very likely at isolated places over Andhra Pradesh, Arunachal Pradesh, Bihar, Jammu-Kashmir-Ladakh-Gilgit-Baltistan-Muzaffarabad, Konkan & Goa, Madhya Maharashtra, Marathwada, Nagaland, Manipur, Mizoram and Tripura, Telangana, West Bengal & Sikkim and West Madhya Pradesh.
- ❖ **Thunderstorm accompanied with lightning & gusty winds(30-40kmph)** very likely at isolated places over Andaman & Nicobar Islands, Bihar, Interior Karnataka, Jammu-Kashmir-Ladakh-Gilgit-Baltistan-Muzaffarabad, Jharkhand, Odisha, West Bengal & Sikkim and West Madhya Pradesh.
- ❖ **Thunderstorm accompanied with Lightning** very likely at isolated places over Andhra Pradesh, Arunachal Pradesh, Assam & Meghalaya, Chhattisgarh, Coastal Karnataka, East Madhya Pradesh, Konkan & Goa, Maharashtra, Nagaland, Manipur, Mizoram and Tripura, Tamil Nadu Puducherry & Karaikal, Telangana, Uttar Pradesh and Uttarakhand.
- ❖ **Strong Surface Winds** very likely at isolated places over Coastal Karnataka, Kerala & Mahe, Lakshadweep and Tamil Nadu Puducherry & Karaikal.

Squally wind with speed reaching 45 kmph to 55 kmph gusting to 65 kmph is likely to prevail along and off Somalia, many parts of west central Arabian Sea, some parts of southwest Arabian Sea.

Squally weather with wind speed reaching 40 - 50 kmph gusting to 60 kmph likely to prevail over few parts of

***Red color warning does not mean "Red Alert" Red color warning means "Take Action"**

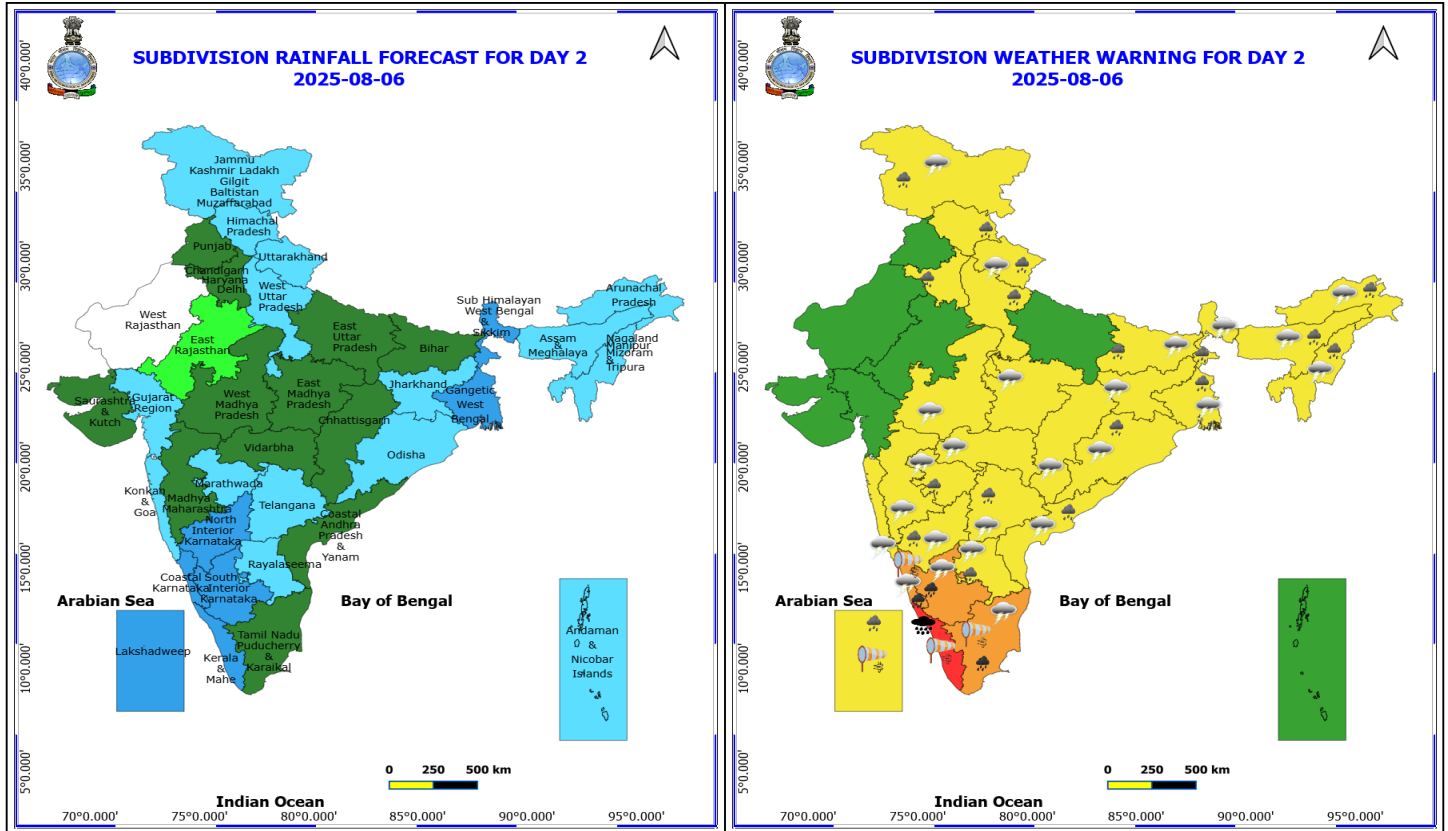
Forecast and warning for any day is valid from 0830 hours IST of day till 0830 hours IST of next day

For more details kindly visit <https://mausam.imd.gov.in> or contact 011-2434-4599

(Service to the nation since 1875)



eastcentral adjoining southeast Arabian Sea, along and off Kerala, Karnataka coasts, over Lakshadweep, Maldives, Comorin areas, over Gulf of Mannar, Sri Lanka coasts, some parts of southwest Bay of Bengal.



6 August (Day 2)

- ❖ **Heavy to Very Heavy Rainfall with isolated Extremely Heavy Rainfall** very likely at isolated places over Kerala & Mahe.
- ❖ **Heavy to Very Heavy Rainfall** very likely at isolated places over Coastal Karnataka, South Interior Karnataka and Tamil Nadu Puducherry & Karaikal.
- ❖ **Heavy Rainfall** very likely at isolated places over Andhra Pradesh, Arunachal Pradesh, Assam & Meghalaya, Bihar, Haryana, Chandigarh & Delhi, Himachal Pradesh, Jammu-Kashmir-Ladakh-Gilgit-Baltistan-Muzaffarabad, Lakshadweep, Marathwada, Nagaland, Manipur, Mizoram and Tripura, North Interior Karnataka, Odisha, Telangana, Uttarakhand, West Bengal & Sikkim and West Madhya Pradesh.
- ❖ **Thunderstorm accompanied with lightning & gusty winds(30-40kmph)** very likely at isolated places over Bihar, Interior Karnataka, Jammu-Kashmir-Ladakh-Gilgit-Baltistan-Muzaffarabad, Jharkhand, Odisha, West Bengal & Sikkim and West Madhya Pradesh.
- ❖ **Thunderstorm accompanied with Lightning** very likely at isolated places over Andhra Pradesh, Arunachal Pradesh, Assam & Meghalaya, Chhattisgarh, Coastal Karnataka, East Madhya Pradesh, Konkan & Goa, Maharashtra, Nagaland, Manipur, Mizoram and Tripura, Tamil Nadu Puducherry & Karaikal, Telangana and Uttarakhand.
- ❖ **Strong Surface Winds** very likely at isolated places over Coastal Karnataka, Kerala & Mahe, Lakshadweep and Tamil Nadu Puducherry & Karaikal.

Squally wind with speed reaching 45 kmph to 55 kmph gusting to 65 kmph is likely to prevail along and off Somalia, many parts of west central Arabian Sea, some parts of southwest Arabian Sea.

***Red color warning does not mean "Red Alert" Red color warning means "Take Action"**

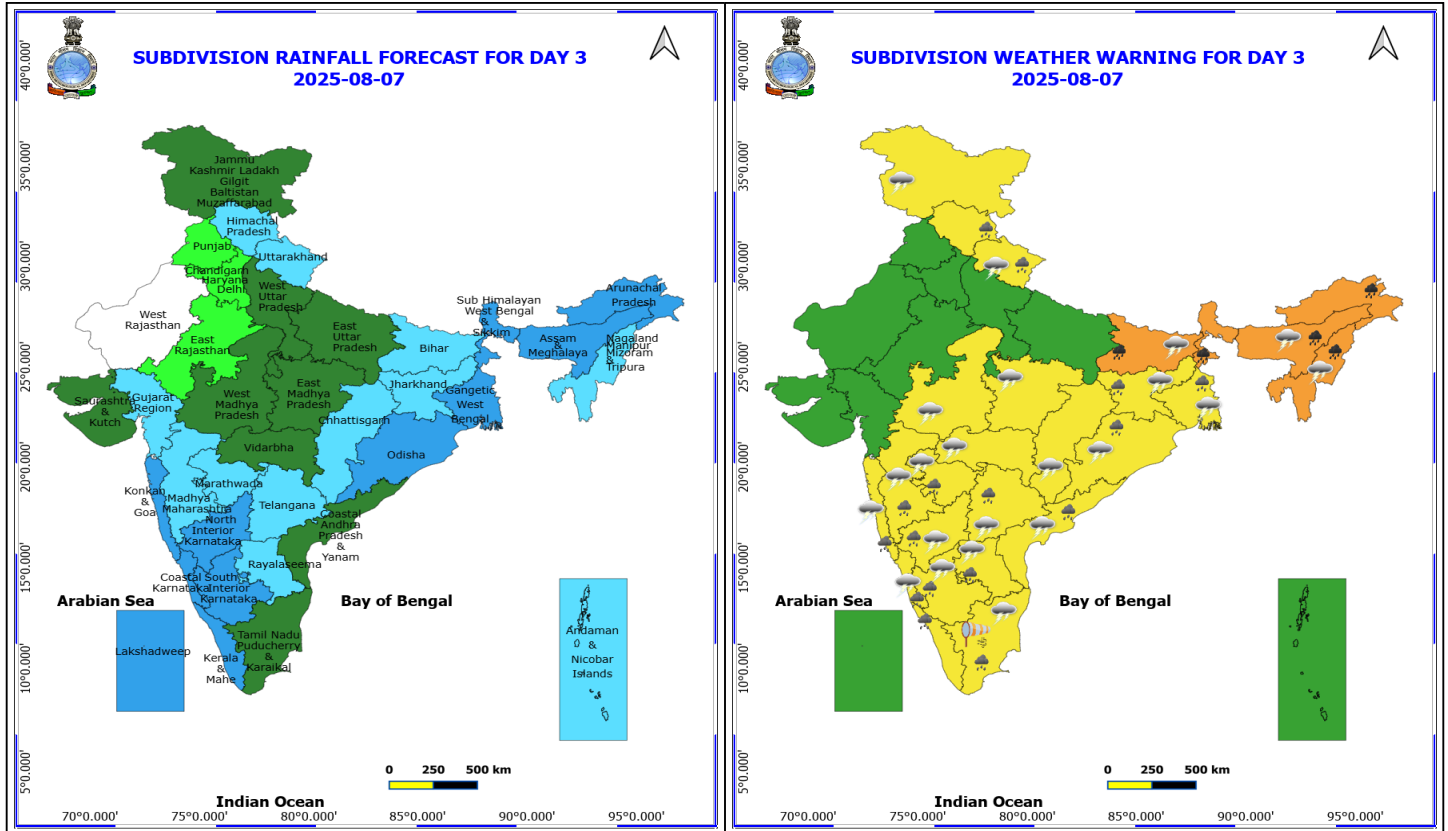
Forecast and warning for any day is valid from 0830 hours IST of day till 0830 hours IST of next day

For more details kindly visit <https://mausam.imd.gov.in> or contact 011-2434-4599

(Service to the nation since 1875)



Squally weather with wind speed reaching 40 - 50 kmph gusting to 60 kmph likely to prevail over few parts of eastcentral, over Gulf of Mannar, south Sri Lanka coasts, few parts of south Bay of Bengal.



7 August (Day 3)

- ❖ **Heavy to Very Heavy Rainfall** very likely at isolated places over Arunachal Pradesh, Assam & Meghalaya, Bihar, Nagaland, Manipur, Mizoram and Tripura and Sub Himalayan West Bengal & Sikkim.
- ❖ **Heavy Rainfall** very likely at isolated places over Andhra Pradesh, Gangetic West Bengal, Himachal Pradesh, Jharkhand, Karnataka, Kerala & Mahe, Konkan & Goa, Madhya Maharashtra, Marathwada, Odisha, Tamil Nadu Puducherry & Karaikal, Telangana and Uttarakhand.
- ❖ **Thunderstorm accompanied with lightning & gusty winds(30-40kmph)** very likely at isolated places over Bihar, Gangetic West Bengal, Interior Karnataka, Jharkhand, Odisha and West Madhya Pradesh.
- ❖ **Thunderstorm accompanied with Lightning** very likely at isolated places over Andhra Pradesh, Assam & Meghalaya, Chhattisgarh, Coastal Karnataka, East Madhya Pradesh, Jammu-Kashmir-Ladakh-Gilgit-Baltistan-Muzaffarabad, Konkan & Goa, Maharashtra, Nagaland, Manipur, Mizoram and Tripura, Tamil Nadu Puducherry & Karaikal, Telangana and Uttarakhand.
- ❖ **Strong Surface Winds** very likely at isolated places over Tamil Nadu Puducherry & Karaikal.

Squally wind with speed reaching 45 kmph to 55 kmph gusting to 65 kmph is likely to prevail along and off Somalia, few parts of westcentral Arabian Sea, some parts of southwest Arabian Sea.

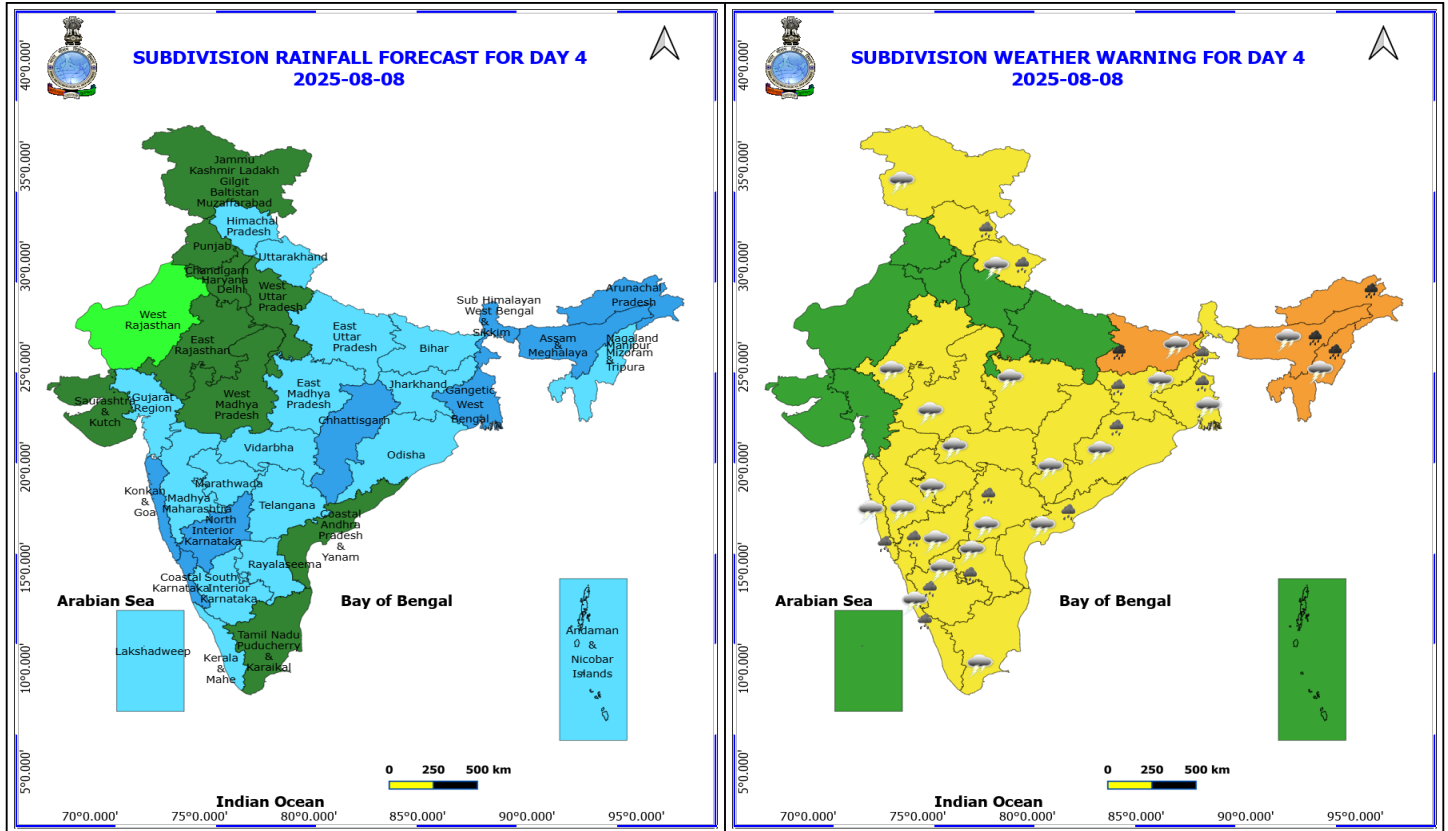
Squally weather with wind speed reaching 40 - 50 kmph gusting to 60 kmph likely to prevail over few parts of eastcentral, along and off Kerala, Karnataka coasts, over Lakshadweep, Maldives, Comorin areas, over Gulf of Mannar, Sri Lanka coasts, some parts of southwest Bay of Bengal.

***Red color warning does not mean "Red Alert" Red color warning means "Take Action"**

Forecast and warning for any day is valid from 0830 hours IST of day till 0830 hours IST of next day

For more details kindly visit <https://mausam.imd.gov.in> or contact 011-2434-4599

(Service to the nation since 1875)



8 August (Day 4)

- ❖ **Heavy to Very Heavy Rainfall** likely at isolated places over Arunachal Pradesh, Assam & Meghalaya, Bihar and Nagaland, Manipur, Mizoram and Tripura.
- ❖ **Heavy Rainfall** likely at isolated places over Andhra Pradesh, Himachal Pradesh, Interior Karnataka, Jharkhand, Kerala & Mahe, Konkan & Goa, Odisha, Telangana, Uttarakhand and West Bengal & Sikkim.
- ❖ **Thunderstorm accompanied with lightning & gusty winds(30-40kmph)** likely at isolated places over Bihar, Gangetic West Bengal, Interior Karnataka, Jharkhand, Odisha and West Madhya Pradesh.
- ❖ **Thunderstorm accompanied with Lightning** likely at isolated places over Andhra Pradesh, Assam & Meghalaya, Chhattisgarh, Coastal Karnataka, East Madhya Pradesh, East Rajasthan, Jammu-Kashmir-Ladakh-Gilgit-Baltistan-Muzaffarabad, Konkan & Goa, Maharashtra, Nagaland, Manipur, Mizoram and Tripura, Tamil Nadu Puducherry & Karaikal, Telangana and Uttarakhand.

Squally wind with speed reaching 45 kmph to 55 kmph gusting to 65 kmph is likely to prevail along and off Somalia, , few parts of westcentral Arabian Sea, some parts of southwest Arabian Sea.

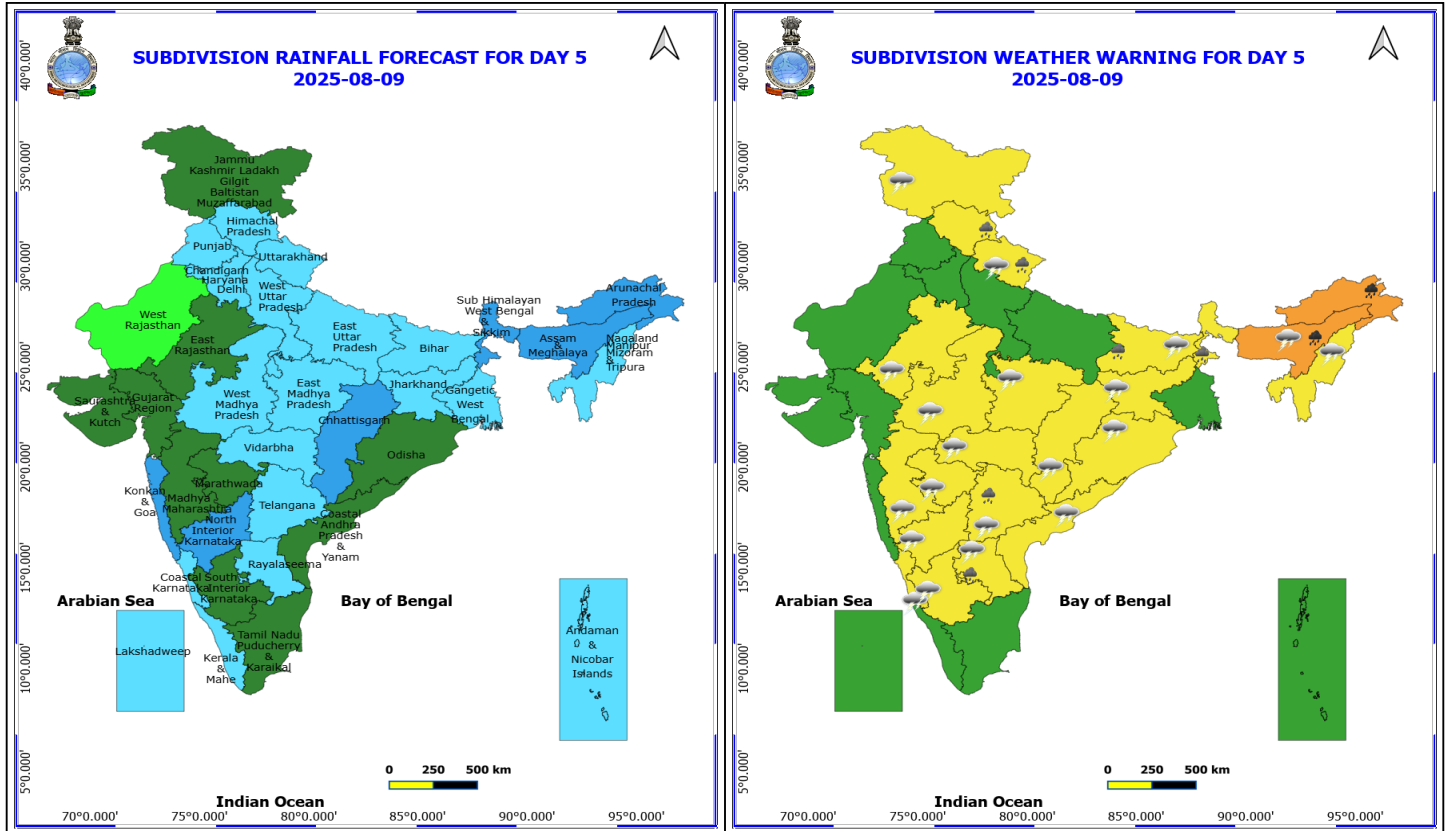
Squally weather with wind speed reaching 35 - 45 kmph gusting to 55 kmph likely to prevail over south Sri Lanka coasts, few parts of southwest Bay of Bengal.

***Red color warning does not mean "Red Alert" Red color warning means "Take Action"**

Forecast and warning for any day is valid from 0830 hours IST of day till 0830 hours IST of next day

For more details kindly visit <https://mausam.imd.gov.in> or contact 011-2434-4599

(Service to the nation since 1875)



9 August (Day 5)

- ❖ **Heavy to Very Heavy Rainfall** likely at isolated places over Arunachal Pradesh and Assam & Meghalaya.
- ❖ **Heavy Rainfall** likely at isolated places over Bihar, Himachal Pradesh, Rayalaseema, Sub Himalayan West Bengal & Sikkim, Telangana and Uttarakhand.
- ❖ **Thunderstorm accompanied with lightning & gusty winds(30-40kmph)** likely at isolated places over Bihar, Interior Karnataka, Jharkhand, Odisha and West Madhya Pradesh.
- ❖ **Thunderstorm accompanied with Lightning** likely at isolated places over Andhra Pradesh, Assam & Meghalaya, Chhattisgarh, Coastal Karnataka, East Madhya Pradesh, East Rajasthan, Jammu-Kashmir-Ladakh-Gilgit-Baltistan-Muzaffarabad, Maharashtra, Nagaland, Manipur, Mizoram and Tripura, Telangana and Uttarakhand.

Squally wind with speed reaching 45 kmph to 55 kmph gusting to 65 kmph is likely to prevail along and off Somalia, few parts of westcentral Arabian Sea, some parts of southwest Arabian Sea.

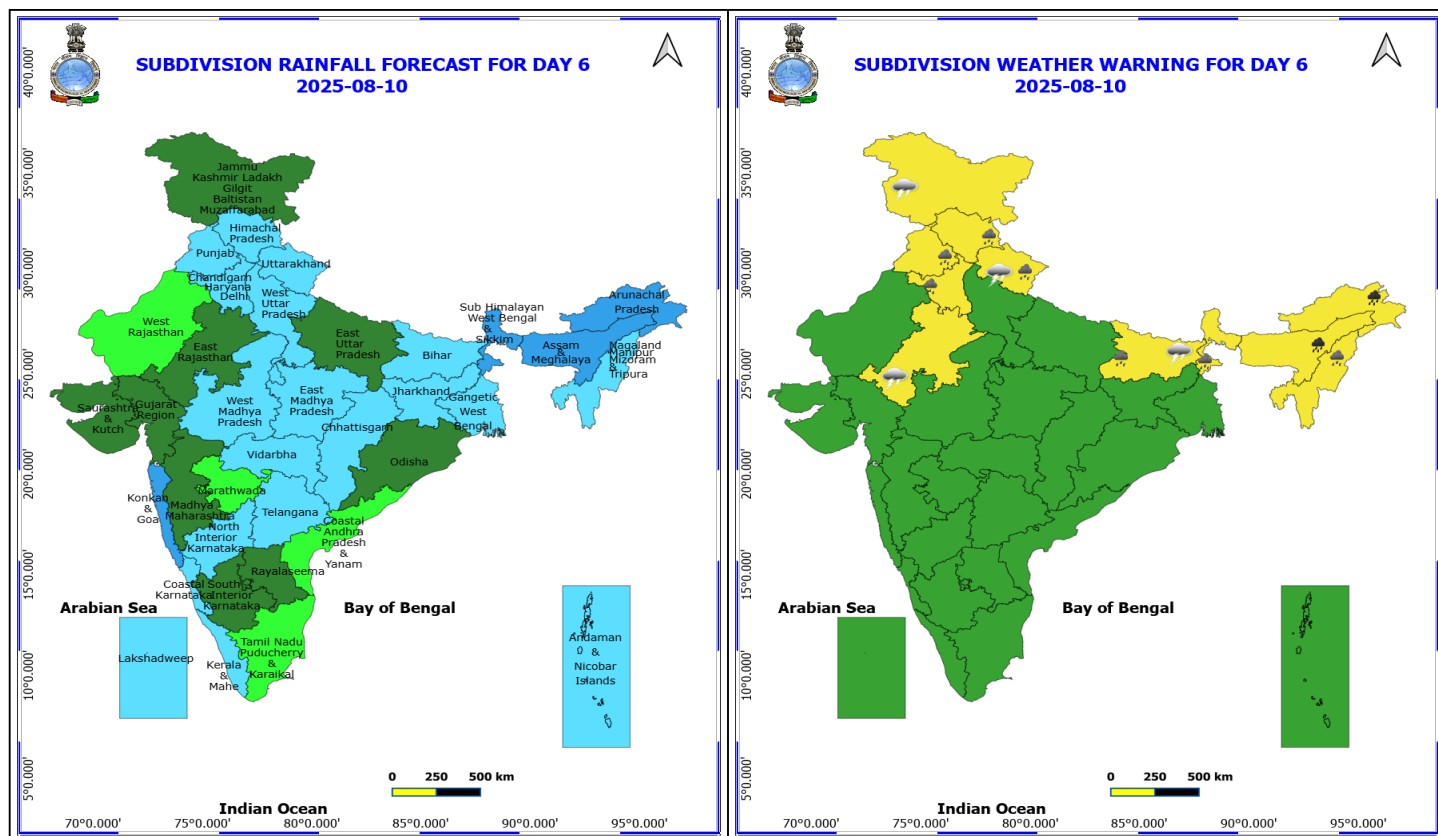
Squally weather with wind speed reaching 35 - 45 kmph gusting to 55 kmph likely to prevail over few parts of southwest adjoining westcentral Bay of Bengal.

***Red color warning does not mean "Red Alert" Red color warning means "Take Action"**

Forecast and warning for any day is valid from 0830 hours IST of day till 0830 hours IST of next day

For more details kindly visit <https://mausam.imd.gov.in> or contact 011-2434-4599

(Service to the nation since 1875)



10 August (Day 6)

- ❖ **Heavy to Very Heavy Rainfall** likely at isolated places over Arunachal Pradesh and Assam & Meghalaya.
- ❖ **Heavy Rainfall** likely at isolated places over Bihar, Haryana, Chandigarh & Delhi, Himachal Pradesh, Nagaland, Manipur, Mizoram and Tripura, Punjab, Sub Himalayan West Bengal & Sikkim and Uttarakhand.
- ❖ **Thunderstorm accompanied with lightning & gusty winds(30-40kmph)** likely at isolated places over Bihar.
- ❖ **Thunderstorm accompanied with Lightning** likely at isolated places over East Rajasthan, Jammu-Kashmir-Ladakh-Gilgit-Baltistan-Muzaffarabad and Uttarakhand.

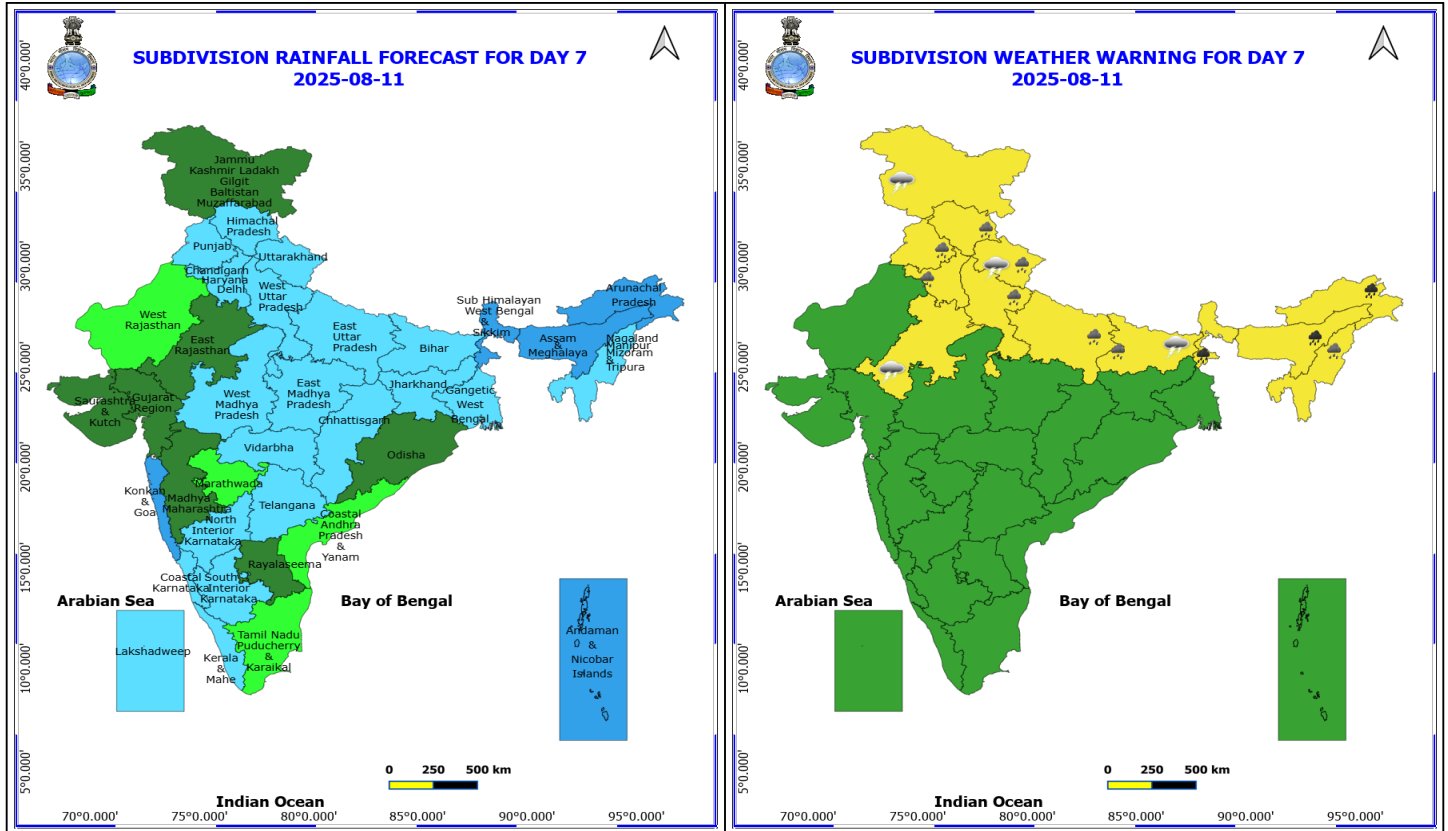
No Fishermen Warning

*Red color warning does not mean "Red Alert" Red color warning means "Take Action"

Forecast and warning for any day is valid from 0830 hours IST of day till 0830 hours IST of next day

For more details kindly visit <https://mausam.imd.gov.in> or contact 011-2434-4599

(Service to the nation since 1875)



11 August (Day 7)

- ❖ **Heavy to Very Heavy Rainfall** likely at isolated places over Arunachal Pradesh and Assam & Meghalaya.
- ❖ **Heavy Rainfall** likely at isolated places over Bihar, Himachal Pradesh, Rayalaseema, Sub Himalayan West Bengal & Sikkim, Telangana and Uttarakhand.
- ❖ **Thunderstorm accompanied with lightning & gusty winds(30-40kmph)** likely at isolated places over Bihar, Interior Karnataka, Jharkhand, Odisha and West Madhya Pradesh.
- ❖ **Thunderstorm accompanied with Lightning** likely at isolated places over Andhra Pradesh, Assam & Meghalaya, Chhattisgarh, Coastal Karnataka, East Madhya Pradesh, East Rajasthan, Jammu-Kashmir-Ladakh-Gilgit-Baltistan-Muzaffarabad, Maharashtra, Nagaland, Manipur, Mizoram and Tripura, Telangana and Uttarakhand.

No Fishermen Warning

Flash Flood Warnings

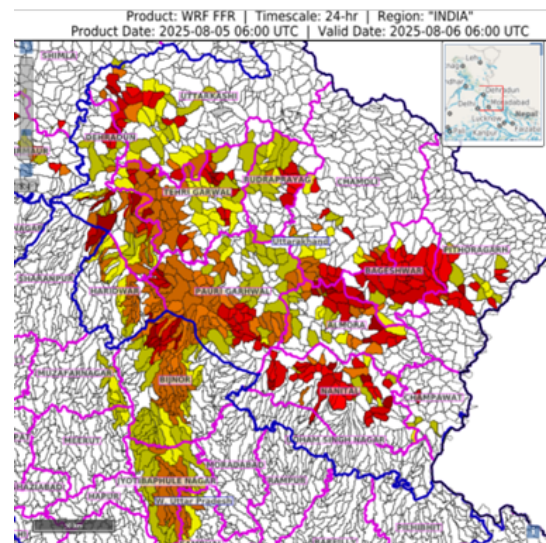
24 hours Outlook for the Flash Flood Risk (FFR) till 1130 IST of 06-08-2025 :

Low to Moderate flash flood risk likely over few watersheds & neighbourhoods of following Met Sub-divisions during next 24 hours.

Uttarakhand - Almora, Bageshwar, Chamoli, Champawat, Dehradun, Haridwar, Nanital, Pauri Garhwal, Pithoragarh, Rudraprayag, Tehri Garwal, Udham Singh Nagar and Uttarkashi districts.

West Uttar Pradesh – Bijnor and Jyotibaphule Nahgar districts.

Surface runoff/ Inundation may occur at some fully saturated soils & low-lying areas over Area of Concern (AoC) as shown in map due to expected rainfall occurrence in next 24 hours.



***Red color warning does not mean "Red Alert" Red color warning means "Take Action"**

Forecast and warning for any day is valid from 0830 hours IST of day till 0830 hours IST of next day

For more details kindly visit <https://mausam.imd.gov.in> or contact 011-2434-4599

(Service to the nation since 1875)



Table-1

7 Days Rainfall Forecast

S.No.	Subdivision	5- Aug	6- Aug	7- Aug	8- Aug	9- Aug	10- Aug	11- Aug
		Day 1	Day 2	Day 3	Day 4	Day 5	Day 6	Day 7
1	ANDAMAN & NICOBAR ISLANDS	SCT	FWS	FWS	FWS	FWS	FWS	WS
2	ARUNACHAL PRADESH	FWS	FWS	WS	WS	WS	WS	WS
3	ASSAM & MEHGHALAYA	WS	FWS	WS	WS	WS	WS	WS
4	N. M. M. & T.	WS	FWS	FWS	FWS	FWS	FWS	FWS
5	S.H. WEST BENGAL & SIKKIM	WS	WS	WS	WS	WS	WS	WS
6	GANGETIC WEST BENGAL	WS	WS	WS	WS	FWS	FWS	FWS
7	ODISHA	SCT	FWS	WS	FWS	SCT	SCT	SCT
8	JHARKHAND	SCT	FWS	FWS	FWS	FWS	FWS	FWS
9	BIHAR	FWS	SCT	FWS	FWS	FWS	FWS	FWS
10	EAST UTTAR PRADESH	FWS	SCT	SCT	FWS	FWS	SCT	FWS
11	WEST UTTAR PRADESH	WS	FWS	SCT	SCT	FWS	FWS	FWS
12	UTTARAKHAND	WS	FWS	FWS	FWS	FWS	FWS	FWS
13	HARYANA, CHD & DELHI	WS	SCT	ISOL	SCT	FWS	FWS	FWS
14	PUNJAB	FWS	SCT	ISOL	SCT	FWS	FWS	FWS
15	HIMACHAL PRADESH	WS	FWS	FWS	FWS	FWS	FWS	FWS
16	JAMMU AND KASHMIR AND LADAKH	WS	FWS	SCT	SCT	SCT	SCT	SCT
17	WEST RAJASTHAN	DRY	DRY	DRY	ISOL	ISOL	ISOL	ISOL
18	EAST RAJASTHAN	ISOL	ISOL	ISOL	SCT	SCT	SCT	SCT
19	WEST MADHYA PRADESH	SCT	SCT	SCT	SCT	FWS	FWS	FWS
20	EAST MADHYA PRADESH	SCT	SCT	SCT	FWS	FWS	FWS	FWS
21	GUJRAT REGION	FWS	FWS	FWS	FWS	SCT	SCT	SCT
22	SAURASHTRA & KUTCH	FWS	SCT	SCT	SCT	SCT	SCT	SCT
23	KONKAN & GOA	FWS	FWS	WS	WS	WS	WS	WS
24	MADHYA MAHARASHTRA	SCT	SCT	FWS	FWS	SCT	SCT	SCT
25	MARATHWADA	SCT	FWS	FWS	FWS	SCT	ISOL	ISOL
26	VIDARBHA	SCT	SCT	SCT	FWS	FWS	FWS	FWS
27	CHATTISGARH	SCT	SCT	FWS	WS	WS	FWS	FWS
28	COASTAL ANDHRA PRADESH	SCT	SCT	SCT	SCT	SCT	ISOL	ISOL
29	TELANGANA	FWS	FWS	FWS	FWS	FWS	FWS	FWS
30	RAYALASEEMA	FWS	FWS	FWS	FWS	FWS	SCT	SCT
31	TAMILNADU & PUDUCHERRY	FWS	SCT	SCT	SCT	SCT	ISOL	ISOL
32	COSTAL KARNATAKA	WS	WS	WS	WS	FWS	FWS	FWS
33	NORTH INTERIOR KARNATAKA	FWS	WS	WS	WS	WS	FWS	FWS
34	SOUTH INTERIOR KARNATAKA	WS	WS	WS	FWS	SCT	SCT	FWS
35	KERALA	WS	WS	WS	FWS	FWS	FWS	FWS
36	LAKSHDWEAP	WS	WS	WS	FWS	FWS	FWS	FWS

Legend	Category	%Stations
WS	Widespread/Most Places	76-100
FWS	Fairly Widespread/Many Places	51-75
SCT	Scattered/ A Few Places	26-50
ISOL	Isolated Places	1-25
DRY	No Rain	0

*Red color warning does not mean "Red Alert" Red color warning means "Take Action"

Forecast and warning for any day is valid from 0830 hours IST of day till 0830 hours IST of next day

For more details kindly visit <https://mausam.imd.gov.in> or contact 011-2434-4599

(Service to the nation since 1875)

Fig. 1: Maximum Temperatures Dated 2025-08-05

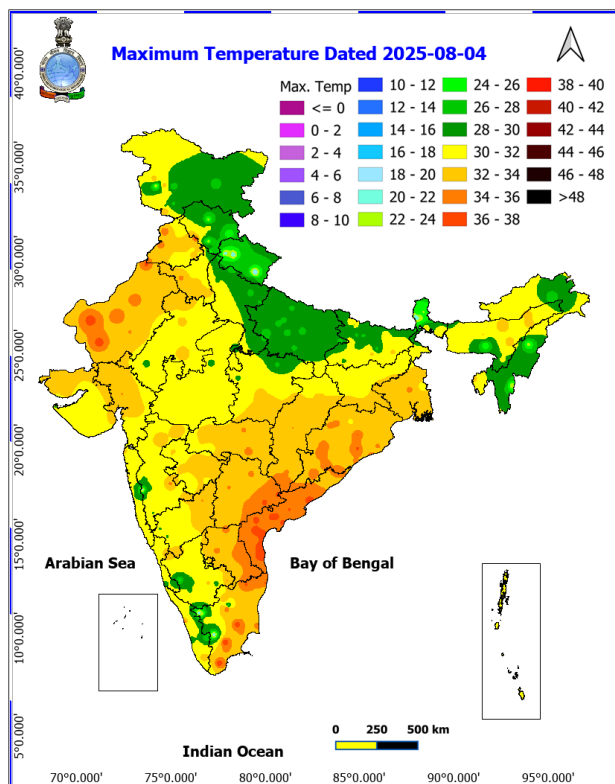


Fig. 2: Departure of Maximum Temp. Dated 2025-08-05

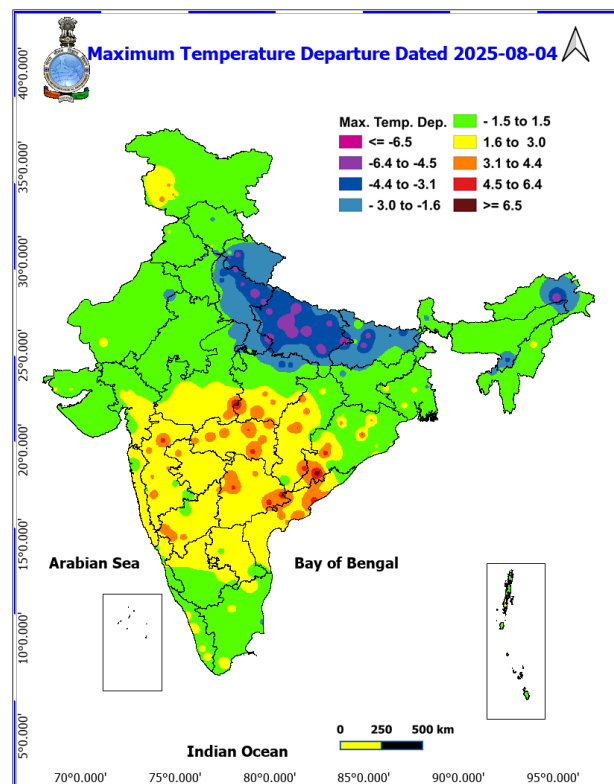


Fig. 3: Minimum Temperatures Dated 2025-08-05

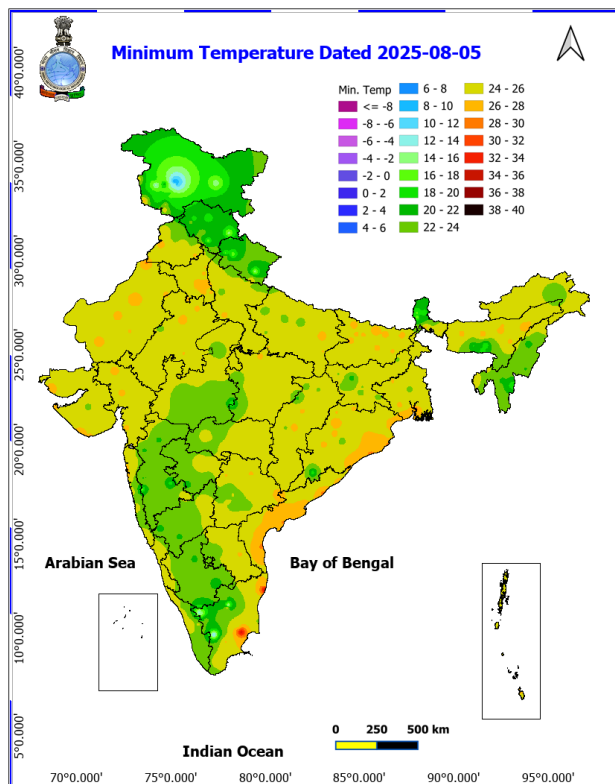
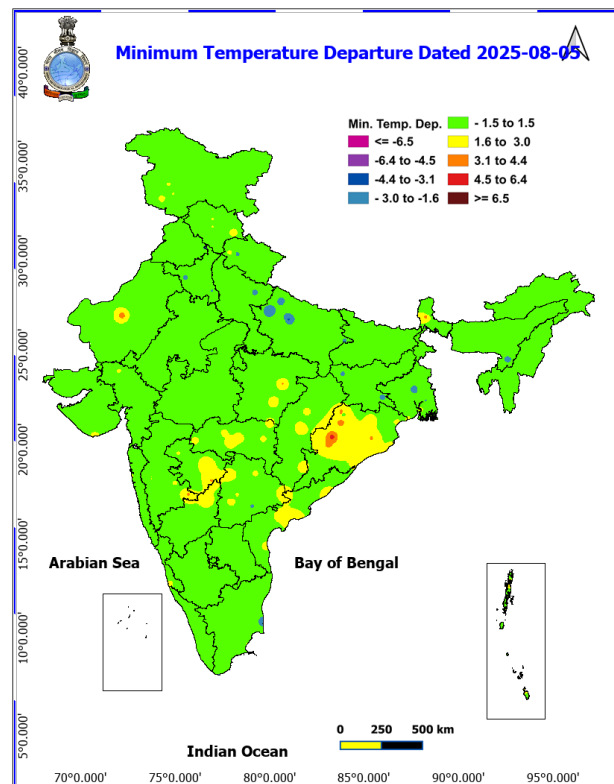
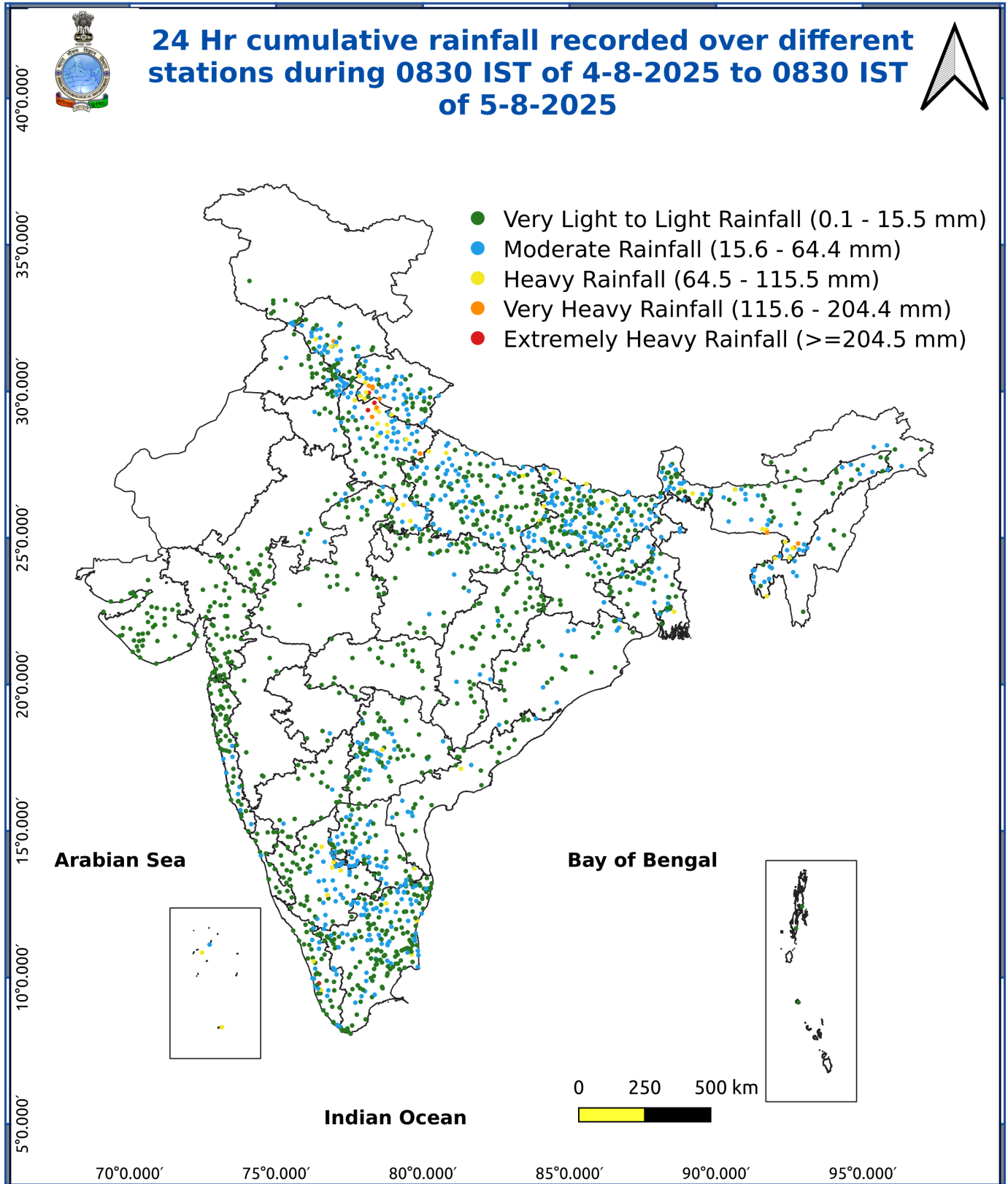


Fig. 4: Departure of Minimum Temp. Dated 2025-08-05





*Red color warning does not mean "Red Alert" Red color warning means "Take Action"

Forecast and warning for any day is valid from 0830 hours IST of day till 0830 hours IST of next day

For more details kindly visit <https://mausam.imd.gov.in> or contact 011-2434-4599

(Service to the nation since 1875)

Impact & Action Suggested due to

Extremely heavy rainfall very likely at isolated places over northwest Uttar Pradesh, Uttarakhand, Ghat areas of Tamil Nadu on 05th and Kerala on 05th & 06th August.

Very heavy rainfall over Himachal Pradesh, Uttarakhand, Haryana, Punjab, East Uttar Pradesh on 05th; Bihar on 07th & 08th; Sub-Himalayan West Bengal & Sikkim on 07th & 11th August. Arunachal Pradesh and Assam & Meghalaya during 07th-11th August.

Impact Expected

Localized Flooding of roads, water logging in low lying areas and closure of underpasses mainly in urban areas of the above region.

Occasional reduction in visibility due to heavy rainfall.

Disruption of traffic in major cities due to water logging in roads leading to increased travel time.

Minor damage to kutcha roads.

Possibilities of damage to vulnerable structure.

Localized Landslides/Mudslides/landslips/mudslips/landsinks/mudsinks.

Damage to horticulture and standing crops in some areas due to inundation.

It may lead to riverine flooding in some river catchments (for riverine flooding please visit Web page of CWC)

Action Suggested

Check for traffic congestion on your route before leaving for your destination.

Follow any traffic advisories that are issued in this regard.

Avoid going to areas that face the water logging problems often.

Avoid staying in vulnerable structure.

Agromet advisories for various parts of the country

Agromet advisories for likely impact of Heavy / Heavy to Very Heavy / Extremely Heavy Rainfall

In **Uttar Pradesh**, postpone sowing of pigeon pea, chilli, onion and planting of banana and papaya and make necessary arrangements for drainage of excess water from the fields in **Bundelkhand Zone**. Make proper arrangement for drainage in fields of autumn sugarcane, spring sugarcane, paddy, pigeon pea, maize, green gram, black gram and vegetables in **South Western Semi-Arid Zone** and pigeon pea, soybean, maize, groundnut, green gram, black gram and barnyard millet in **Eastern Plain Zone**.

***Red color warning does not mean "Red Alert" Red color warning means "Take Action"**

Forecast and warning for any day is valid from 0830 hours IST of day till 0830 hours IST of next day

For more details kindly visit <https://mausam.imd.gov.in> or contact 011-2434-4599

(Service to the nation since 1875)

In **Uttarakhand**, to avoid waterlogging, maintain proper drainage channels in fields of rice, sugarcane, maize, black gram, green gram, soybean, and vegetables in **Bhabar and Tarai Zone** and barnyard millet, finger millet, green gram and black gram in **Sub Humid Sub Tropic Zone**. Postpone sowing of green gram and soybean in **Nainital** district. In **Hill Zone**, strengthen the bunds to prevent surface runoff of water. Postpone sowing of vegetable pea in case of excessive wet soil conditions. Maintain proper drainage channels in the crop fields.

In **Himachal Pradesh**, cover the cauliflower nursery with plastic sheets to prevent damage from heavy rainfall in **High Hills Sub Temperate Wet Zone**. Make proper drainage channels in vegetable fields in **Mid Hills Sub Humid Zone**; rice, maize and vegetable fields in **Sub Montane and Low Hills Sub Tropical Zone** and kidney beans, finger millet, cucurbits and vegetables in **High Hills Sub Temperate Wet Zone**.

In **Arunachal Pradesh**, postpone all fresh sowing operations till cessation of heavy rains. Avoid fresh transplanting of rice in lowlands during heavy rainfall. Cover rice fields with natural mulches like dry leaves or straw to avert the adverse impact of rain. Ensure proper drainage in rice, maize, finger millet, soybean and vegetables and fruit orchards to avoid waterlogging. Provide strong support to fruit-bearing plants to prevent them from bending or breaking during heavy rains.

In **Assam**, postpone the sowing of sesame, green gram and pigeon pea till cessation of heavy rains in **Kokrajhar** and **Bongaigaon** districts. In **Central Brahmaputra Valley Zone**, harvest matured jute immediately and keep the bundles of harvested produce in high land or shed to avoid retting in contaminated water. Avoid sowing of sesame during heavy rainfall. To prevent waterlogging, ensure proper drainage in *Sali* rice, green gram and pigeon pea fields in **Lower Brahmaputra Valley Zone**; *Sali* rice, turmeric and already sown sesame fields in **Central Brahmaputra Valley Zone**; rice and sesame fields in **Hill Zone** and *Sali* rice fields in **North Bank Plain Zone, Upper Brahmaputra Valley Zone** and **Barak Valley Zone**.

In **Meghalaya**, avoid transplanting of rice during heavy rainfall. Ensure proper drainage in rice, maize, turmeric, chilli, okra and bitter gourd fields to prevent waterlogging. Provide staking / support to tall and fragile crops like banana, papaya, bottle gourd etc. to prevent lodging.

In **Sub-Himalayan West Bengal**, make provision to drain out excess water from rice, ginger, vegetable fields and fruit orchards in **Hill Zone** and *aman* paddy and vegetable fields in **Terai Zone**. Cover the chilli seedlings with plastic to protect them from heavy rains in **Terai Zone**.

In **Bihar**, ensure proper drainage in maize, vegetables, ragi, kodo, sava, etc. in low-lying areas and strengthen field bunds in **South Bihar Alluvial Zone**. Maintain proper drainage in maize fields and do not allow rain water to accumulate in the fields of ragi, kodo, sava, etc. in **North East Alluvial Zone**.

In **Kerala**, provide adequate drainage in fields of rice, coconut, banana and ginger. Provide support to banana plantations. Make the vegetable pandals stronger.

In **Tamil Nadu**, provide support to sugarcane and banana plants to prevent lodging. Provide proper drainage facility in rice nursery in **North Eastern Zone** and standing crop fields in **Cauvery Delta Zone**.

In **Karnataka**, provide adequate drainage facilities in arecanut and banana plantations in **Coastal Zone**; fields of maize, cotton, ginger and plantations of arecanut in **Hill Zone** and arecanut and coconut plantations in **Southern Transition Zone**.

Livestock / Fishery

Keep the animals inside the shed during heavy rainfall and provide them balanced feed.

Store feed and fodder in a safe place to prevent spoilage.

Construct an outlet with proper netting around the ponds to drain out excess water, thereby preventing fish from escaping in case of overflow.

***Red color warning does not mean "Red Alert" Red color warning means "Take Action"**

Forecast and warning for any day is valid from 0830 hours IST of day till 0830 hours IST of next day

For more details kindly visit <https://mausam.imd.gov.in> or contact 011-2434-4599

(Service to the nation since 1875)

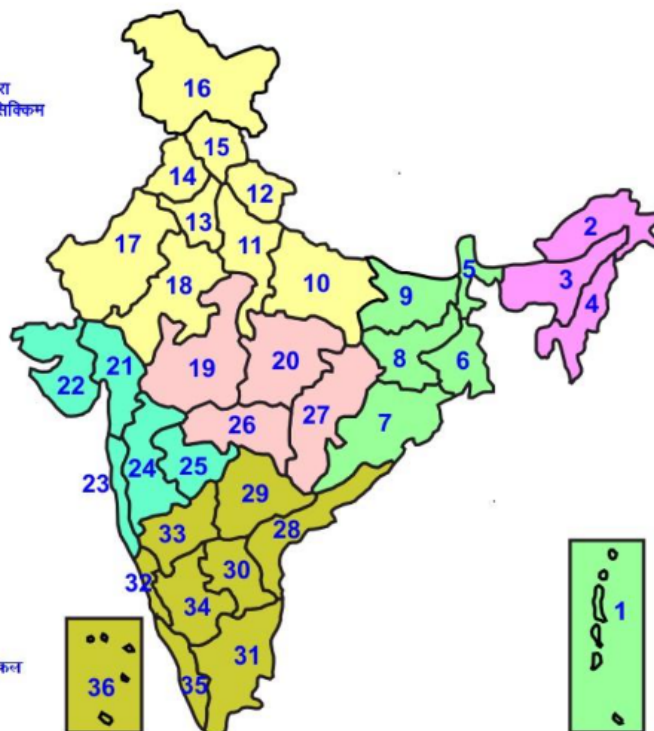


Agromet advisories for likely impact of Thunderstorm / Gusty Winds / Squally Winds

Provide mechanical support to horticultural crops and staking or support to vegetables and young fruit plants / fruit-bearing plants to avoid lodging due to strong winds.

LEGENDS

- 1 अंडमान और निकोबार द्वीप समुह
- 2 अरुणाचल प्रदेश
- 3 असम और मेघालय
- 4 नागालैंड मनीपुर मीजोरम और त्रिपुरा
- 5 उप हिमालय पश्चिम बंगाल एवं सिक्किम
- 6 पश्चिम बंगाल
- 7 ओडिसा
- 8 झारखंड
- 9 बिहार
- 10 पूर्वी उत्तर प्रदेश
- 11 पश्चिम उत्तर प्रदेश
- 12 उत्तराखंड
- 13 हरियाणा चंडीगढ़ एवं दिल्ली
- 14 पंजाब
- 15 हिमाचल प्रदेश
- 16 जम्मू एवं कश्मीर एवं लद्दाख
- 17 पश्चिम राजस्थान
- 18 पूर्वी राजस्थान
- 19 पश्चिम मध्य प्रदेश
- 20 पूर्वी मध्य प्रदेश
- 21 गुजरात क्षेत्र
- 22 सौराष्ट्र एवं कच्छ
- 23 कोंकण एवं गोवा
- 24 मध्य महाराष्ट्र
- 25 मराठावाड़ा
- 26 विदर्भ
- 27 छत्तीसगढ़
- 28 तटीय आंध्र प्रदेश एवं यनम
- 29 तेलंगाना
- 30 रायलसीमा
- 31 तमिलनाडु, पुदुचेरी एवं कराईकल
- 32 तटिय कर्नाटक
- 33 आंतरिक उत्तरी कर्नाटक
- 34 आंतरिक दक्षिणी कर्नाटक
- 35 केरल एवं माहे
- 36 लक्षद्वीप



1. Andaman & Nicobar Islands
2. Arunachal Pradesh
3. Assam & Meghalaya
4. Nagaland, Manipur, Mizoram & Tripura
5. Sub-Himalayan West Bengal & Sikkim
6. Gangetic West Bengal
7. Orissa
8. Jharkhand
9. Bihar
10. East Uttar Pradesh
11. West Uttar Pradesh
12. Uttarakhand
13. Haryana, Chd & Delhi
14. Punjab
15. Himachal Pradesh
16. Jammu & Kashmir and Ladakh
17. West Rajasthan
18. East Rajasthan
19. West Madhya Pradesh
20. East Madhya Pradesh
21. Gujarat
22. Saurashtra
23. Konkan & Goa
24. Madhya Maharashtra
25. Marathawada
26. Vidharbha
27. Chhattisgarh
28. Coastal Andhra Pradesh & Yanam
29. Telangana
30. Rayalaseema
31. Tamilnadu, Puducherry & Karaikal
32. Coastal Karnataka
33. North Interior Karnataka
34. South Interior Karnataka
35. Kerala & Mahe
36. Lakshadweep

SPATIAL DISTRIBUTION (% of Stations reporting)


% Stations	Category	% Stations	Category
76-100	Widespread (WS/Most Places)	26-50	Scattered (SCT/ A Few Places)
51-75	Fairly Widespread (FWS/ Many Places)	1-25	Isolated (ISOL)


Subdivision Colour


- NO WARNING
- WATCH (BE UPDATED)
- ALERT (BE PREPARED TO TAKE ACTION)
- WARNING (TAKE ACTION)


Probabilistic Forecast


Terms	Probability of Occurrence (%)
Unlikely	< 25
Likely	25 - 50
Very Likely	50 - 75
Most Likely	> 75


-  Heavy Rain


 Thunderstorm & Lightning


 Strong surface winds


 Cold Wave


 Hot & Humid


 Very Heavy Rain


 Hailstorm


 Heat Wave


 Cold Day


 Extremely Heavy Rain


 Dust Storm


 Hot Day

 Ground Frost

 Heavy Snow

 Dust Raising Winds

 Warm Night

 FOG Fog

*Red color warning does not mean "Red Alert" Red color warning means "Take Action"

Forecast and warning for any day is valid from 0830 hours IST of day till 0830 hours IST of next day

For more details kindly visit <https://mausam.imd.gov.in> or contact 011-2434-4599

(Service to the nation since 1875)

LEGENDS

WARNING

WARNING (TAKE ACTION)
ALERT (BE PREPARED)
WATCH (BE UPDATED)
NO WARNING (NO ACTION)

Probabilistic Forecast

Terms	Probability of Occurrence (%)
Unlikely	< 25
Likely	25 - 50
Very Likely	50 - 75
Most Likely	> 75



Heavy: 64.5 to 115.5 mm/cm *
Very Heavy: 115.6 to 204.4 mm/cm *
Extremely Heavy: > 204.4 mm/cm *



When maximum temperature of a station reaches $\geq 40^{\circ}\text{C}$ for plains and $\geq 30^{\circ}\text{C}$ for hilly regions
(a) Based on Departure from normal

Heat Wave: Maximum Temperature Departure from normal 4.5°C to 6.4°C .
Severe Heat Wave: Maximum Temperature Departure from normal $\geq 6.5^{\circ}\text{C}$

(b). Based on Actual maximum temperature

Heat Wave: When actual maximum temperature $\geq 45^{\circ}\text{C}$.
Severe Heat Wave: When actual maximum temperature $\geq 47^{\circ}\text{C}$

(c). Criteria for heat wave for coastal stations

When maximum temperature departure is $> 4.5^{\circ}\text{C}$ from normal. Heat Wave may be described provided maximum temperature $\geq 37^{\circ}\text{C}$



When maximum temperature remains 40°C

Warm Night: When minimum temperature departure 4.5°C to 6.4°C .
Severe Warm Night: When minimum temperature departure $> 6.4^{\circ}\text{C}$.



When minimum temperature of a station $\leq 10^{\circ}\text{C}$ for plains and $\leq 0^{\circ}\text{C}$ for hilly regions.

(a). Based on departure

Cold Wave: Minimum Temperature Departure from normal -4.5°C to -6.4°C .
Severe Cold Wave: Minimum Temperature Departure from normal $\leq -6.5^{\circ}\text{C}$

(b) Based on actual Minimum Temperature (for Plains only)

Cold Wave: When Minimum Temperature is $\leq 4.0^{\circ}\text{C}$
Severe Cold Wave: When Minimum Temperature is $\leq 2.0^{\circ}\text{C}$

(c) For Coastal Stations

When Minimum Temperature departure is $\leq -4.5^{\circ}\text{C}$ & actual Minimum Temperature is $\leq 15^{\circ}\text{C}$



When minimum temperature of a station $\leq 10^{\circ}\text{C}$ for plains and $\leq 0^{\circ}\text{C}$ for hilly regions
Based on departure

Cold Day: Maximum Temperature Departure from normal -4.5°C to -6.4°C .
Severe Cold Day: Maximum Temperature Departure from normal $\leq -6.5^{\circ}\text{C}$



Phenomenon of small droplets suspended in air and the horizontal visibility $< 1\text{km}$

Moderate Fog: When the visibility between 500-200 metres
Dense Fog: when the visibility between 50-200 metres
Very Dense Fog: when the visibility < 50 metres



Sudden electrical discharges manifested by a flash of light (Lightning) and a sharp rumbling sound (thunder)



An ensemble of particles of dust or sand energetically lifted to great heights by a strong and turbulent wind.



Ice deposits on ground

Air temperature $\leq 4^{\circ}\text{C}$ (over Plains)



A strong wind that rises suddenly, lasts for at least 1 minute.

Moderate: Wind speed 52-61 kmph
Severe: Wind speed 62-87 kmph
Very Severe: Wind speed > 87 kmph



Effect of various waves in the sea over specific area

Rough to very rough: Wind speed 41-62 kmph (22-33 knots) & Wave height 2.5-6 metre
High to very high: Wind speed 63-117 kmph (34-63 knots) & Wave height 6-14 metre
Phenomenal: Wind speed > 117 kmph (> 63 knots) & Wave height > 14 metre



Cyclonic Storm: Wind speed 62-87 kmph (34-47 knots)

Severe Cyclonic Storm: Wind speed 88-117 kmph (48-63 knots)
Very Severe Cyclonic Storm: Wind speed 118-165 kmph (64-89 knots)
Extremely Severe Cyclonic Storm: Wind speed 166-220 kmph (90-119 knots)
Super Cyclone Storm: Wind speed > 220 kmph (> 119 knots)

*Red color warning does not mean "Red Alert" Red color warning means "Take Action"

Forecast and warning for any day is valid from 0830 hours IST of day till 0830 hours IST of next day

For more details kindly visit <https://mausam.imd.gov.in> or contact 011-2434-4599

(Service to the nation since 1875)